

Data Path : Z:\pestpcbsrv\HPCHEM1\ECD_P\Data\PP022222\
 Data File : PP043947.D
 Signal(s) : Signal #1: ECD1A.ch Signal #2: ECD2B.ch
 Acq On : 22 Feb 2022 22:06
 Operator : YP\AJ
 Sample : N1636-01
 Misc :
 ALS Vial : 35 Sample Multiplier: 1

Instrument :
 ECD_P
 ClientSampleId :
 HR-02-022222

Integration File signal 1: autoint1.e
 Integration File signal 2: autoint2.e
 Quant Time: Feb 23 00:50:39 2022
 Quant Method : Z:\pestpcbsrv\HPCHEM1\ECD_P\methods\PP021022.M
 Quant Title : GC EXTRACTABLES
 QLast Update : Fri Feb 11 04:48:05 2022
 Response via : Initial Calibration
 Integrator: ChemStation

Volume Inj. : 2 µl
 Signal #1 Phase : ZB-MR1 Signal #2 Phase: ZB-MR2
 Signal #1 Info : 30Mx0.32mmx 0.50µ Signal #2 Info : 30M x 0.32mm x 0.25µm

Compound	RT#1	RT#2	Resp#1	Resp#2	ng/ml	ng/ml

System Monitoring Compounds						
1) SA Tetrachlo...	3.915	3.172	45467768	41891445	20.564	22.303
2) SA Decachlor...	10.057	8.542	24285129	29692678	20.444	18.302

Target Compounds

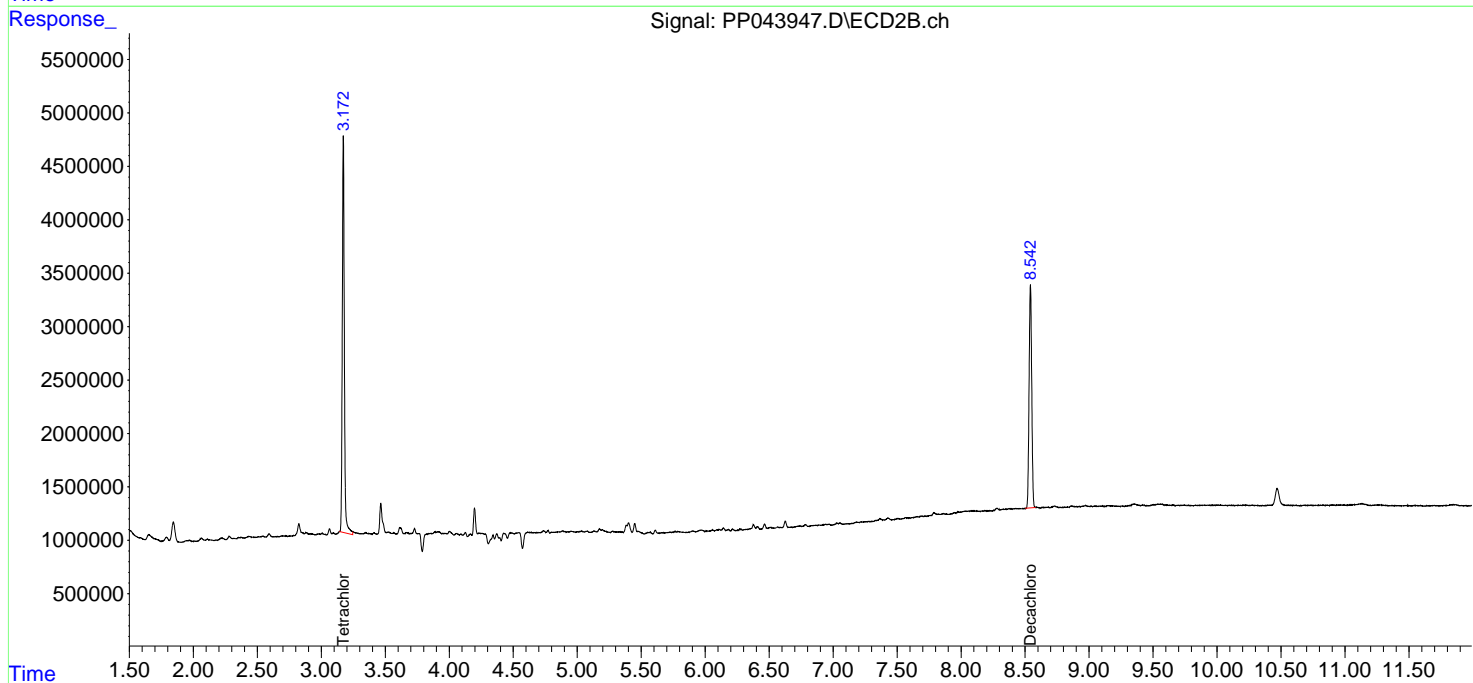
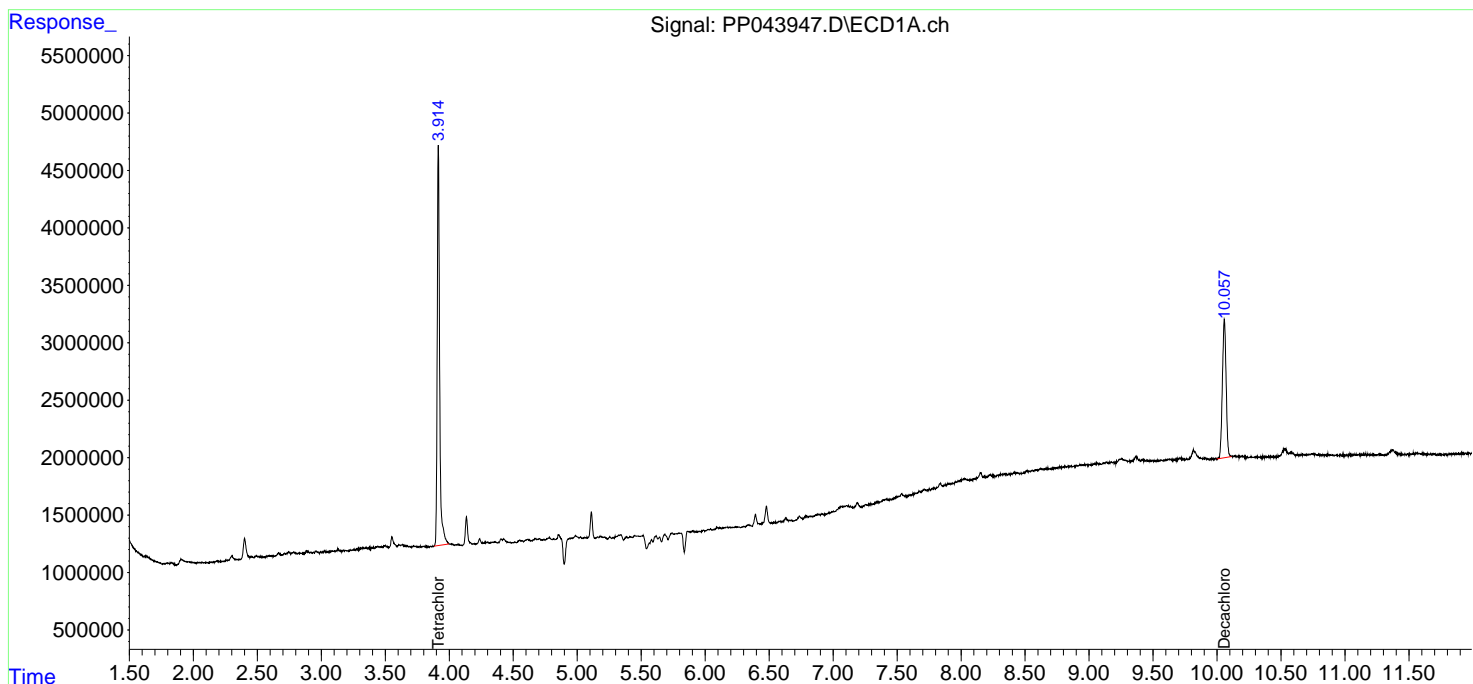
(f)=RT Delta > 1/2 Window (#)=Amounts differ by > 25% (m)=manual int.

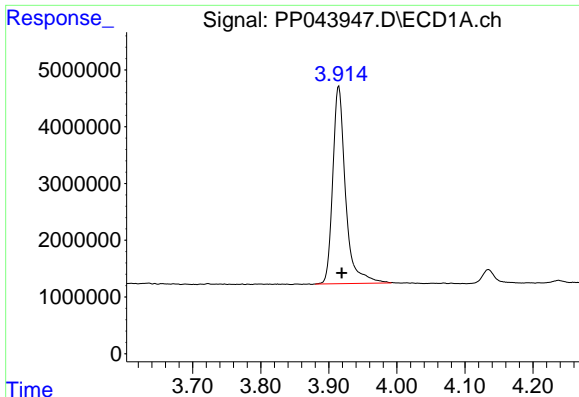
Data Path : Z:\pestpcbsrv\HPCHEM1\ECD_P\Data\PP022222\
 Data File : PP043947.D
 Signal(s) : Signal #1: ECD1A.ch Signal #2: ECD2B.ch
 Acq On : 22 Feb 2022 22:06
 Operator : YP\AJ
 Sample : N1636-01
 Misc :
 ALS Vial : 35 Sample Multiplier: 1

Instrument :
 ECD_P
 ClientSampleId :
 HR-02-022222

Integration File signal 1: autoint1.e
 Integration File signal 2: autoint2.e
 Quant Time: Feb 23 00:50:39 2022
 Quant Method : Z:\pestpcbsrv\HPCHEM1\ECD_P\methods\PP021022.M
 Quant Title : GC EXTRACTABLES
 QLast Update : Fri Feb 11 04:48:05 2022
 Response via : Initial Calibration
 Integrator: ChemStation

Volume Inj. : 2 µl
 Signal #1 Phase : ZB-MR1 Signal #2 Phase: ZB-MR2
 Signal #1 Info : 30Mx0.32mmx 0.50µ Signal #2 Info : 30M x 0.32mm x 0.25µm

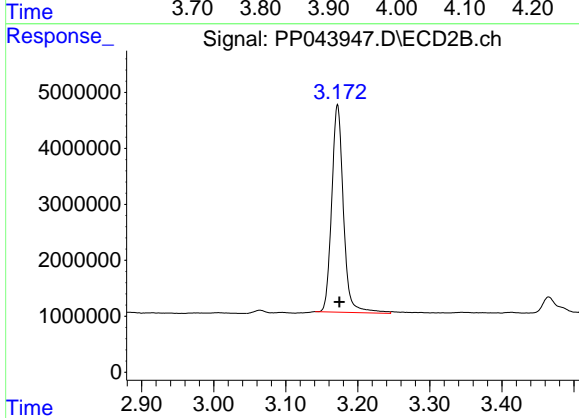




#1 Tetrachloro-m-xylene

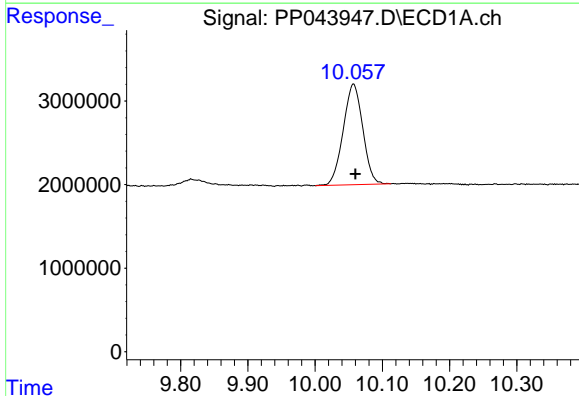
R.T.: 3.915 min
 Delta R.T.: -0.004 min
 Response: 45467768
 Conc: 20.56 ng/ml

Instrument :
 ECD_P
 ClientSampleId :
 HR-02-022222



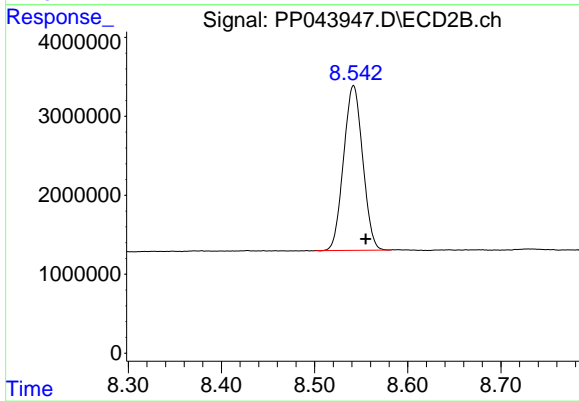
#1 Tetrachloro-m-xylene

R.T.: 3.172 min
 Delta R.T.: -0.002 min
 Response: 41891445
 Conc: 22.30 ng/ml



#2 Decachlorobiphenyl

R.T.: 10.057 min
 Delta R.T.: -0.003 min
 Response: 24285129
 Conc: 20.44 ng/ml



#2 Decachlorobiphenyl

R.T.: 8.542 min
 Delta R.T.: -0.013 min
 Response: 29692678
 Conc: 18.30 ng/ml