

Data Path : Z:\pestpcbsrv\HPCHEM1\ECD_P\Data\PP022223\
 Data File : PP055833.D
 Signal(s) : Signal #1: ECD1A.ch Signal #2: ECD2B.ch
 Acq On : 22 Feb 2023 12:23
 Operator : YP\AJ
 Sample : PB151000BS
 Misc :
 ALS Vial : 8 Sample Multiplier: 1

Instrument :
 ECD_P
 ClientSampleId :

Integration File signal 1: autoint1.e
 Integration File signal 2: autoint2.e
 Quant Time: Feb 22 20:19:31 2023
 Quant Method : Z:\pestpcbsrv\HPCHEM1\ECD_P\methods\PP021723.M
 Quant Title : GC EXTRACTABLES
 QLast Update : Mon Feb 20 05:24:03 2023
 Response via : Initial Calibration
 Integrator: ChemStation

Volume Inj. : 2 µl
 Signal #1 Phase : ZB-MR1 Signal #2 Phase: ZB-MR2
 Signal #1 Info : 30Mx0.32mmx 0.50µ Signal #2 Info : 30M x 0.32mm x 0.25µm

Compound	RT#1	RT#2	Resp#1	Resp#2	ng/ml	ng/ml
System Monitoring Compounds						
1) SA Tetrachlo...	4.323	3.566	33481215	25532353	20.780	17.486
2) SA Decachlor...	10.070	8.571	45243717	25644761	22.179	22.605
Target Compounds						
3) L1 AR-1016-1	5.494	4.649	24381984	16721718	408.588	371.346
4) L1 AR-1016-2	5.517	4.667	35880815	23402047	410.117	360.343
5) L1 AR-1016-3	5.579	4.843	22768674	12667890	409.879	364.512
6) L1 AR-1016-4	5.677	4.885	18281577	11149179	410.256	372.998
7) L1 AR-1016-5	5.974	5.098	19483717	13823494	403.518	349.665
8) L2 AR-1221-1	4.528	3.778	2158995	1737221	103.725	96.713
9) L2 AR-1221-2	4.618	3.865	2944940	2279795	185.138	173.588
10) L2 AR-1221-3	4.695	3.939	12966123	9949948	267.273	238.392
11) L3 AR-1232-1	4.695	3.939	12966123	9949948	327.345	289.028
12) L3 AR-1232-2	5.225	4.667	18655741	23402047	898.144	797.337
13) L3 AR-1232-3	5.517	4.843	35880815	12667890	910.598	833.563
14) L3 AR-1232-4	5.677	4.927	18281577	13609054	933.224	897.717
15) L3 AR-1232-5	5.769	5.098	15987746	13823494	999.652	843.333
16) L4 AR-1242-1	5.494	4.649	24381984	16721718	504.946	454.480
17) L4 AR-1242-2	5.517	4.667	35880815	23402047	504.944	444.299
18) L4 AR-1242-3	5.579	4.843	22768674	12667890	510.346	447.462
19) L4 AR-1242-4	5.677	4.927	18281577	13609054	505.988	441.095
20) L4 AR-1242-5	6.418	5.451	2753522	10909053	65.733	327.508 #
21) L5 AR-1248-1	5.494	4.649	24381984	16721718	670.146	598.742
22) L5 AR-1248-2	5.769	4.885	15987746	11149179	277.865	262.083
23) L5 AR-1248-3	5.974	4.927	19483717	13609054	299.850	305.812
24) L5 AR-1248-4	6.378	5.098	2886136	13823494	39.780	269.983 #
25) L5 AR-1248-5	6.418	5.491	2753522	1391398	38.849	31.568
26) L6 AR-1254-1	6.353	5.451	15570450	10909053	211.779	148.277 #
27) L6 AR-1254-2	6.571	5.599	16866620	10307414	146.152	163.826
28) L6 AR-1254-3	6.940	6.018	9329071	18181034	75.804	185.375 #
29) L6 AR-1254-4	7.227	6.233	5804849	1589544	63.199	28.876 #
30) L6 AR-1254-5	7.647	6.650	57413810	33624264	546.262	413.843
31) L7 AR-1260-1	7.105	6.133	40074313	26458398	387.027	362.933
32) L7 AR-1260-2	7.363	6.322	47396608	30106939	376.846	368.967
33) L7 AR-1260-3	7.725	6.476	31194558	28833858	355.181	341.203
34) L7 AR-1260-4	7.950	6.949	40059585	21475460	372.734	335.550
35) L7 AR-1260-5	8.266	7.192	75466760	46737210	365.547	345.282
36) L8 AR-1262-1	7.725	6.742	31194558	12140796	264.403	344.438 #
37) L8 AR-1262-2	8.266	6.949	75466760	21475460	343.849	289.219
38) L8 AR-1262-3	8.589	7.476	50077272	9174336	327.562	165.350 #
39) L8 AR-1262-4	8.666	7.539	11166100	34658480	148.317	341.409 #
40) L8 AR-1262-5	9.319	8.036	19949144	10515754	241.965	231.234
41) L9 AR-1268-1	8.589	7.476	50077272	9174336	175.464	54.564 #

Data Path : Z:\pestpcbsrv\HPCHEM1\ECD_P\Data\PP022223\
 Data File : PP055833.D
 Signal(s) : Signal #1: ECD1A.ch Signal #2: ECD2B.ch
 Acq On : 22 Feb 2023 12:23
 Operator : YP\AJ
 Sample : PB151000BS
 Misc :
 ALS Vial : 8 Sample Multiplier: 1

Instrument :
 ECD_P
 ClientSampleId :

Integration File signal 1: autoint1.e
 Integration File signal 2: autoint2.e
 Quant Time: Feb 22 20:19:31 2023
 Quant Method : Z:\pestpcbsrv\HPCHEM1\ECD_P\methods\PP021723.M
 Quant Title : GC EXTRACTABLES
 QLast Update : Mon Feb 20 05:24:03 2023
 Response via : Initial Calibration
 Integrator: ChemStation

Volume Inj. : 2 µl
 Signal #1 Phase : ZB-MR1 Signal #2 Phase: ZB-MR2
 Signal #1 Info : 30Mx0.32mmx 0.50µ Signal #2 Info : 30M x 0.32mm x 0.25µm

	Compound	RT#1	RT#2	Resp#1	Resp#2	ng/ml	ng/ml
42)	L9 AR-1268-2	8.666	7.539	11166100	34658480	41.878	226.585 #
43)	L9 AR-1268-3	8.895	7.747	1410392	833703	5.993	6.076
44)	L9 AR-1268-4	9.319	8.036	19949144	10515754	202.059	191.136
45)	L9 AR-1268-5	9.733	8.322	6691808	3672983	8.889	9.106

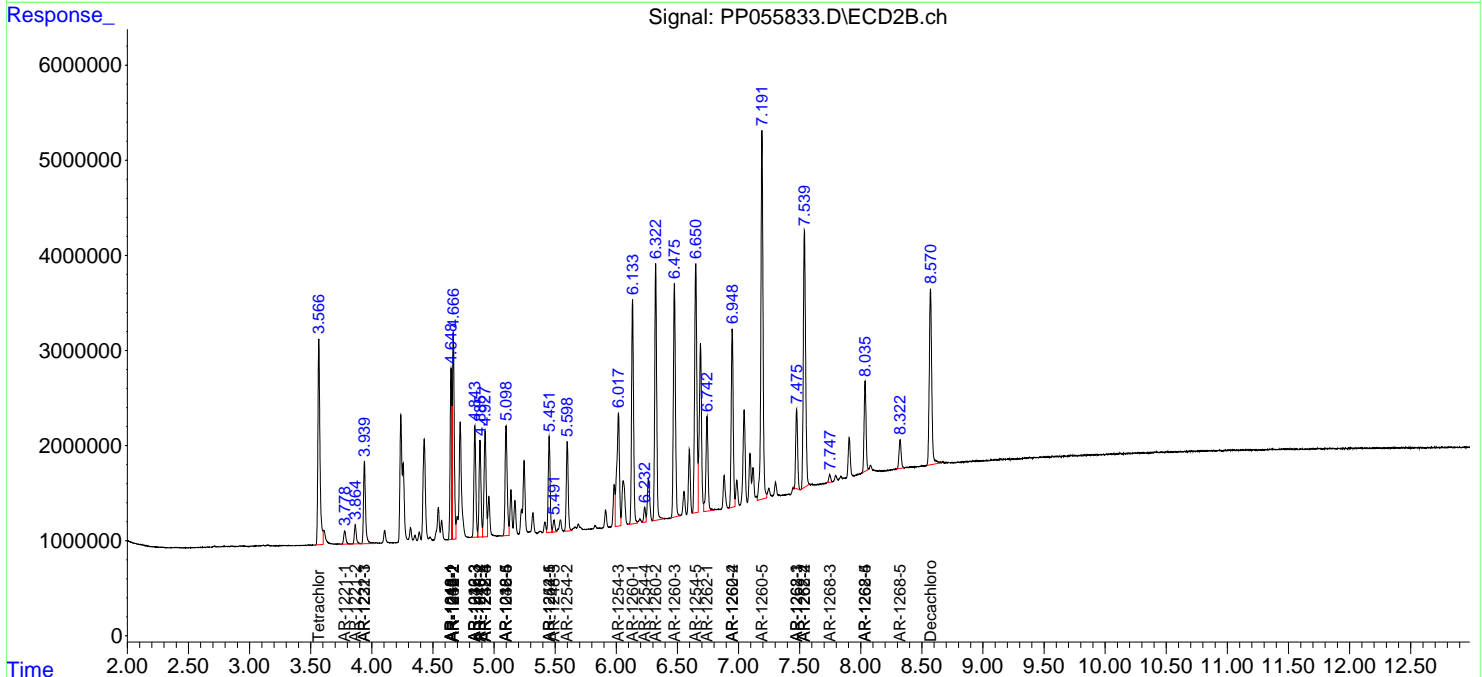
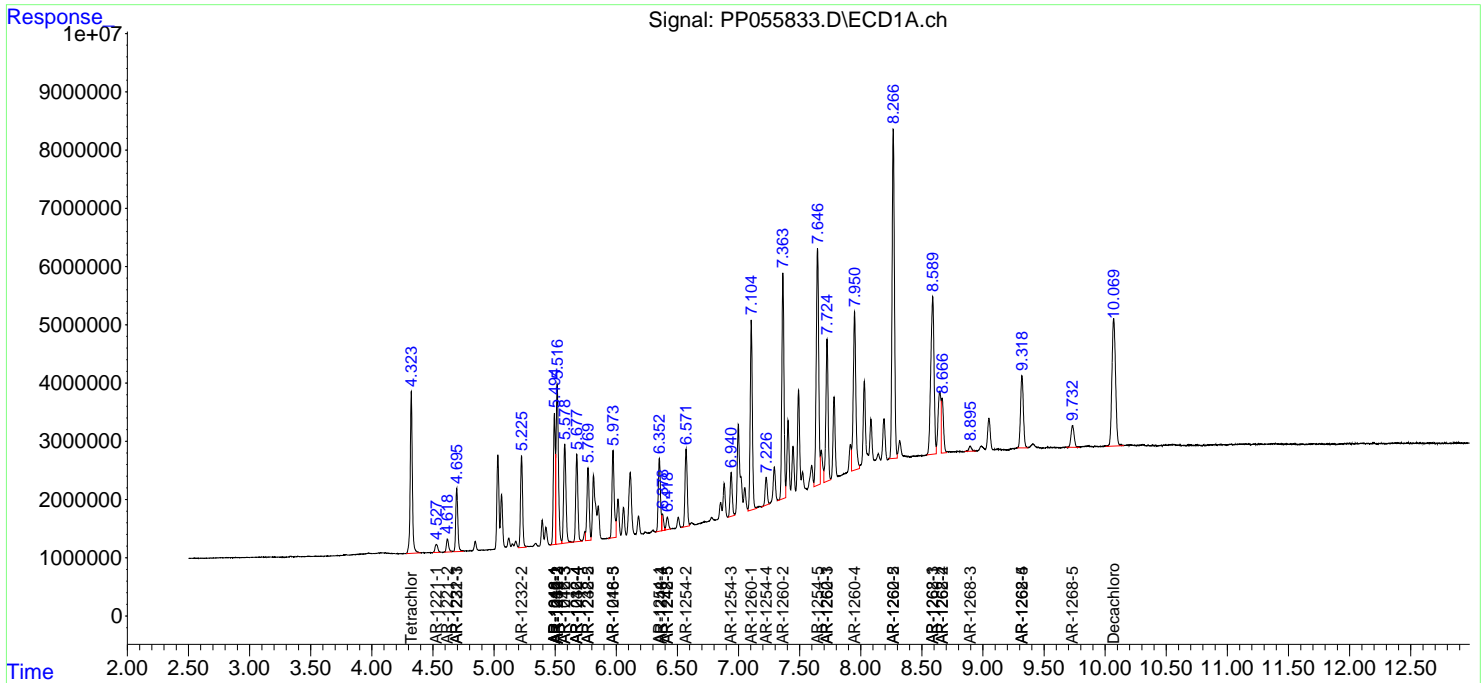
(f)=RT Delta > 1/2 Window (#)=Amounts differ by > 25% (m)=manual int.

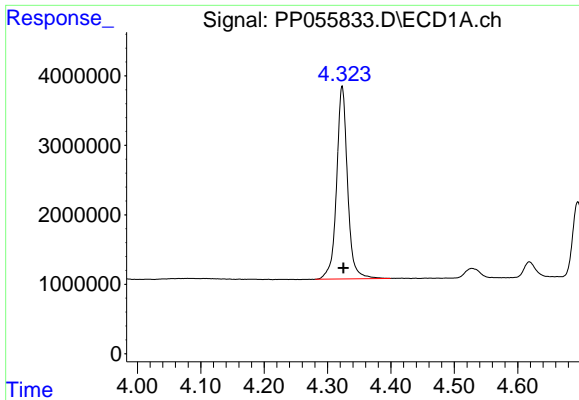
Data Path : Z:\pestpcbsrv\HPCHEM1\ECD_P\Data\PP022223\
 Data File : PP055833.D
 Signal(s) : Signal #1: ECD1A.ch Signal #2: ECD2B.ch
 Acq On : 22 Feb 2023 12:23
 Operator : YP\AJ
 Sample : PB151000BS
 Misc :
 ALS Vial : 8 Sample Multiplier: 1

Instrument :
 ECD_P
 ClientSampleId :

Integration File signal 1: autoint1.e
 Integration File signal 2: autoint2.e
 Quant Time: Feb 22 20:19:31 2023
 Quant Method : Z:\pestpcbsrv\HPCHEM1\ECD_P\methods\PP021723.M
 Quant Title : GC EXTRACTABLES
 QLast Update : Mon Feb 20 05:24:03 2023
 Response via : Initial Calibration
 Integrator: ChemStation

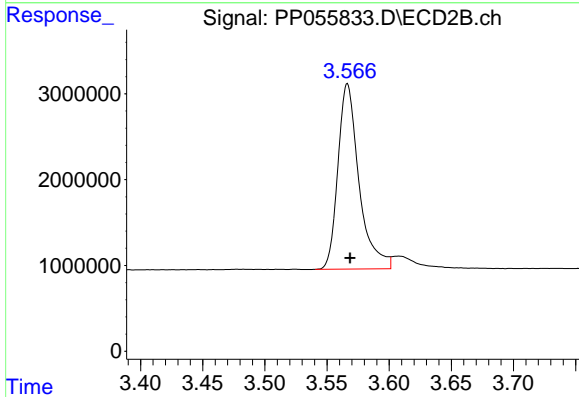
Volume Inj. : 2 µl
 Signal #1 Phase : ZB-MR1 Signal #2 Phase: ZB-MR2
 Signal #1 Info : 30Mx0.32mmx 0.50µ Signal #2 Info : 30M x 0.32mm x 0.25µm



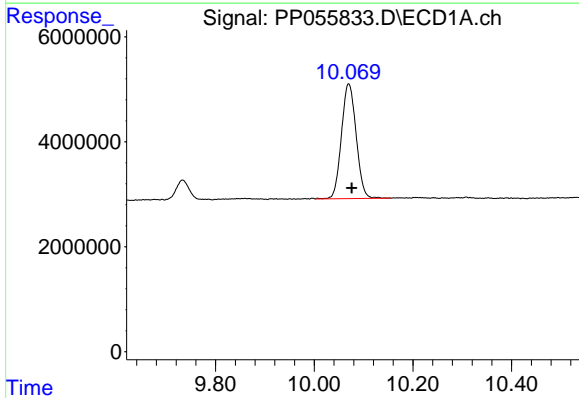


#1 Tetrachloro-m-xylene
R.T.: 4.323 min
Delta R.T.: -0.002 min
Response: 33481215
Conc: 20.78 ng/ml

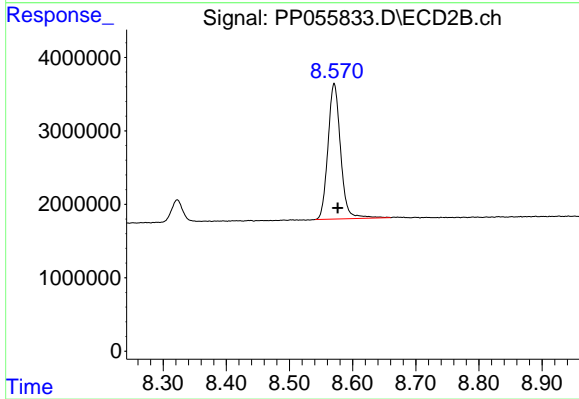
Instrument :
ECD_P
ClientSampleId :



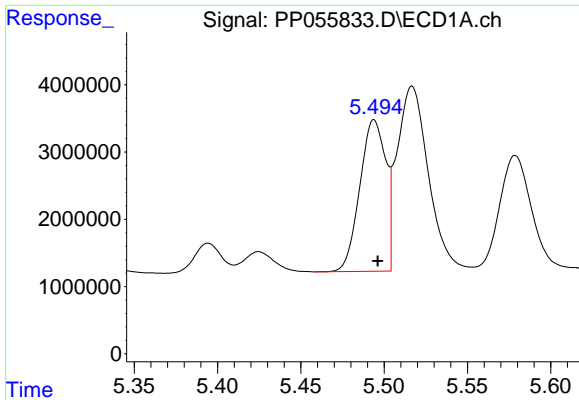
#1 Tetrachloro-m-xylene
R.T.: 3.566 min
Delta R.T.: -0.002 min
Response: 25532353
Conc: 17.49 ng/ml



#2 Decachlorobiphenyl
R.T.: 10.070 min
Delta R.T.: -0.006 min
Response: 45243717
Conc: 22.18 ng/ml



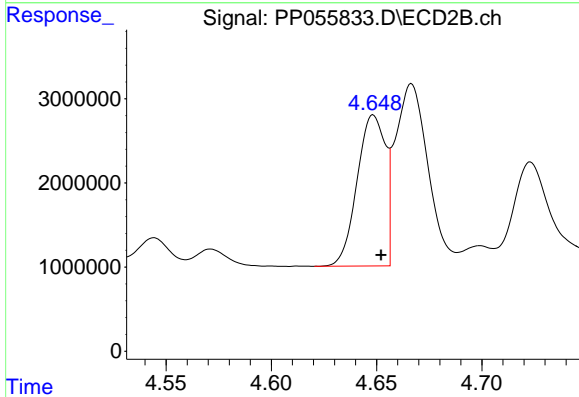
#2 Decachlorobiphenyl
R.T.: 8.571 min
Delta R.T.: -0.006 min
Response: 25644761
Conc: 22.60 ng/ml



#3 AR-1016-1

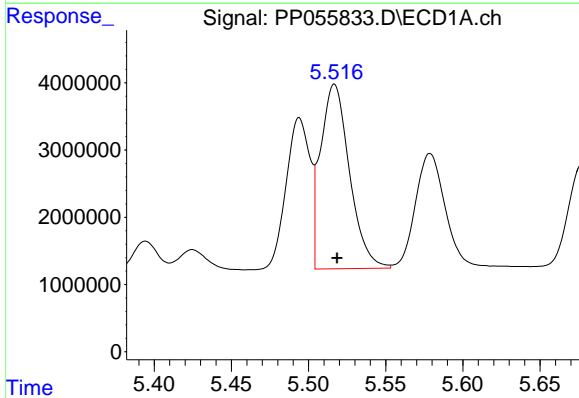
R.T.: 5.494 min
 Delta R.T.: -0.002 min
 Response: 24381984
 Conc: 408.59 ng/ml

Instrument :
 ECD_P
 ClientSampleId :



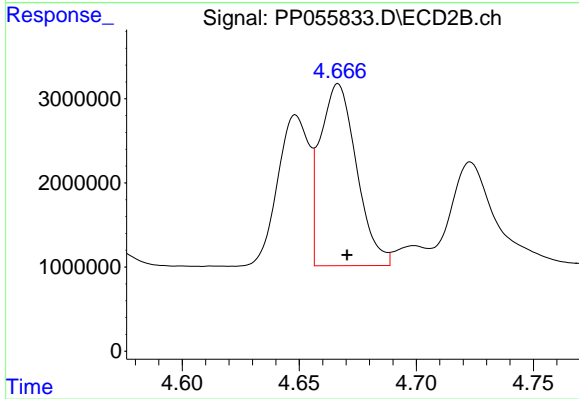
#3 AR-1016-1

R.T.: 4.649 min
 Delta R.T.: -0.004 min
 Response: 16721718
 Conc: 371.35 ng/ml



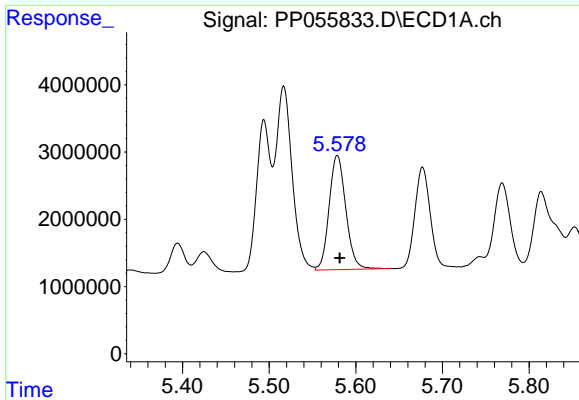
#4 AR-1016-2

R.T.: 5.517 min
 Delta R.T.: -0.002 min
 Response: 35880815
 Conc: 410.12 ng/ml



#4 AR-1016-2

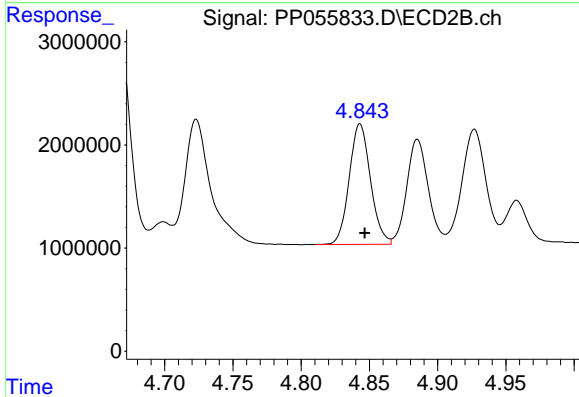
R.T.: 4.667 min
 Delta R.T.: -0.004 min
 Response: 23402047
 Conc: 360.34 ng/ml



#5 AR-1016-3

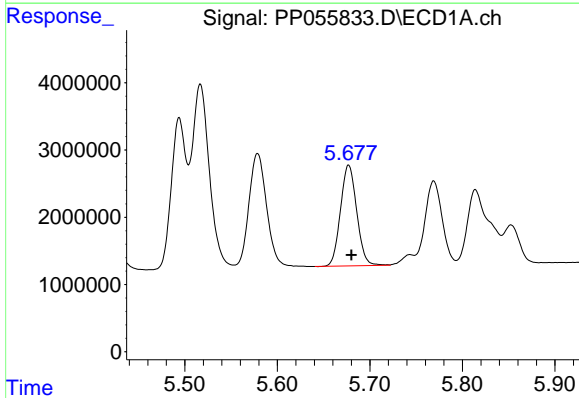
R.T.: 5.579 min
 Delta R.T.: -0.003 min
 Response: 22768674
 Conc: 409.88 ng/ml

Instrument :
 ECD_P
 ClientSampleId :



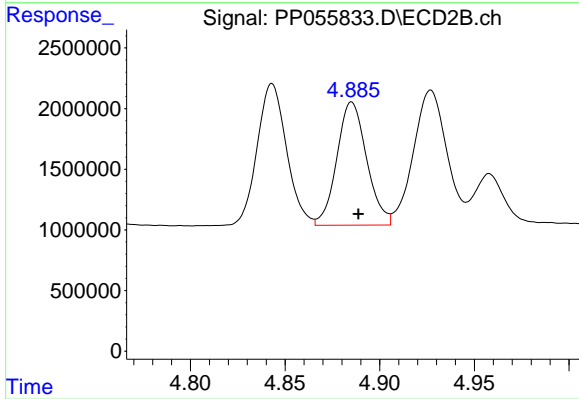
#5 AR-1016-3

R.T.: 4.843 min
 Delta R.T.: -0.004 min
 Response: 12667890
 Conc: 364.51 ng/ml



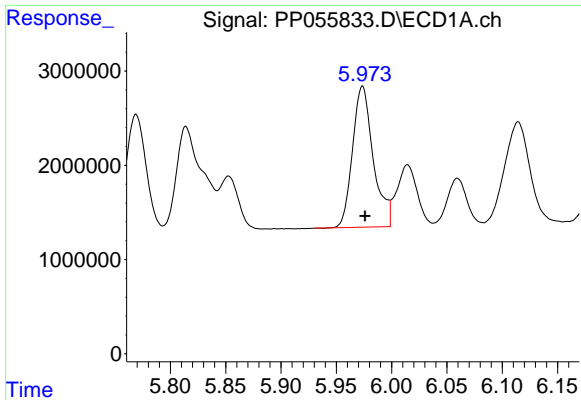
#6 AR-1016-4

R.T.: 5.677 min
 Delta R.T.: -0.003 min
 Response: 18281577
 Conc: 410.26 ng/ml



#6 AR-1016-4

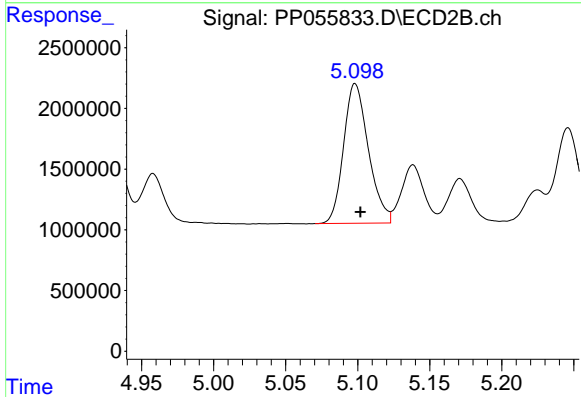
R.T.: 4.885 min
 Delta R.T.: -0.004 min
 Response: 11149179
 Conc: 373.00 ng/ml



#7 AR-1016-5

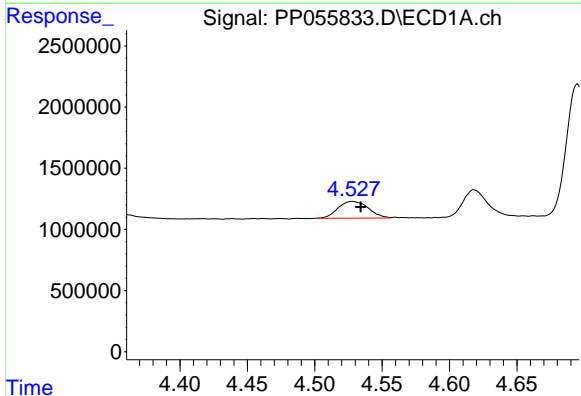
R.T.: 5.974 min
Delta R.T.: -0.002 min
Response: 19483717
Conc: 403.52 ng/ml

Instrument :
ECD_P
ClientSampleId :



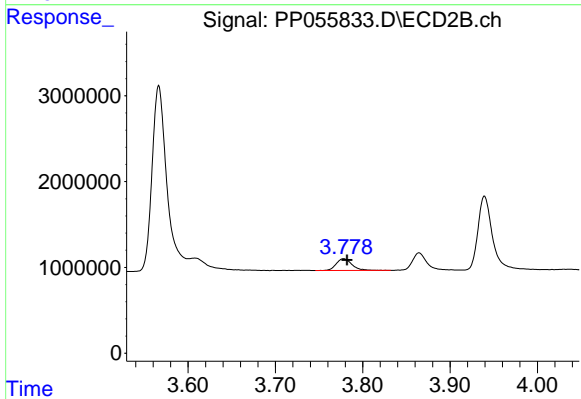
#7 AR-1016-5

R.T.: 5.098 min
Delta R.T.: -0.004 min
Response: 13823494
Conc: 349.67 ng/ml



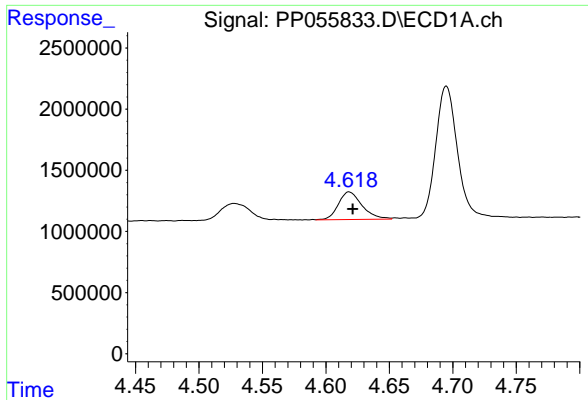
#8 AR-1221-1

R.T.: 4.528 min
Delta R.T.: -0.006 min
Response: 2158995
Conc: 103.72 ng/ml



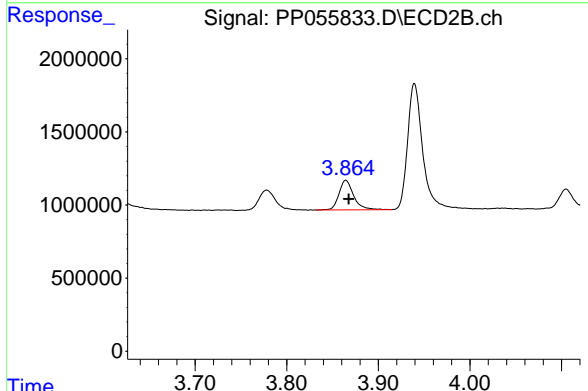
#8 AR-1221-1

R.T.: 3.778 min
Delta R.T.: -0.004 min
Response: 1737221
Conc: 96.71 ng/ml

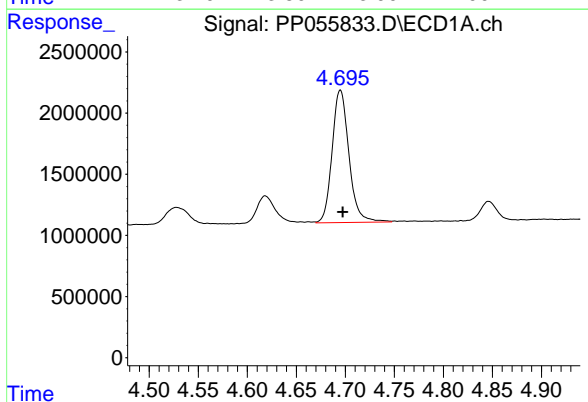


#9 AR-1221-2
 R.T.: 4.618 min
 Delta R.T.: -0.003 min
 Response: 2944940
 Conc: 185.14 ng/ml

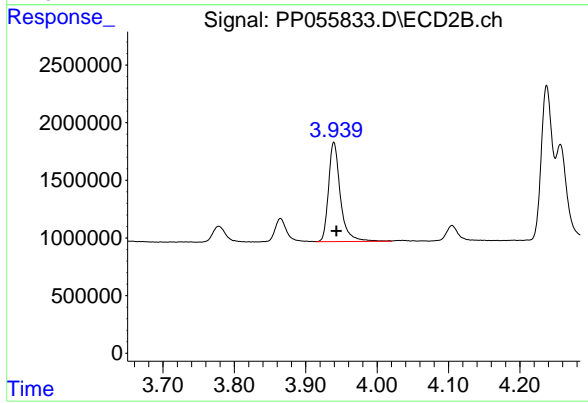
Instrument :
 ECD_P
 ClientSampleId :



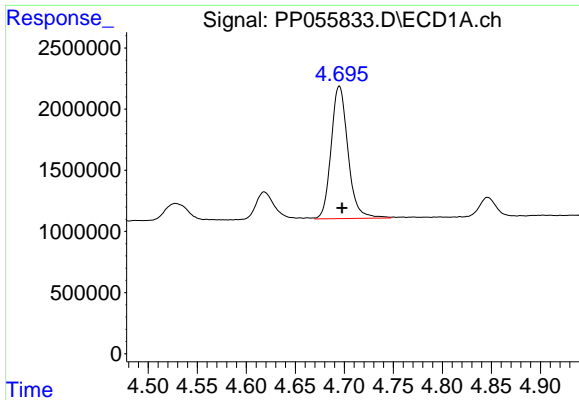
#9 AR-1221-2
 R.T.: 3.865 min
 Delta R.T.: -0.003 min
 Response: 2279795
 Conc: 173.59 ng/ml



#10 AR-1221-3
 R.T.: 4.695 min
 Delta R.T.: -0.003 min
 Response: 12966123
 Conc: 267.27 ng/ml



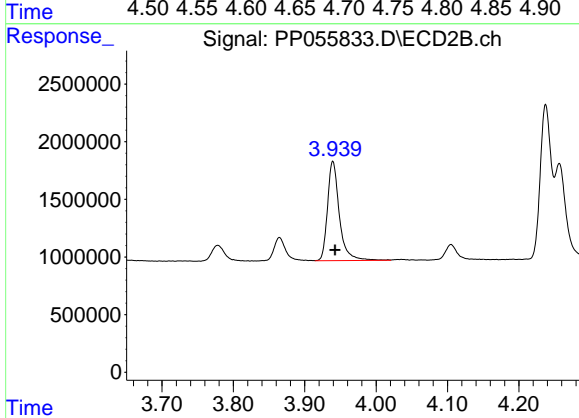
#10 AR-1221-3
 R.T.: 3.939 min
 Delta R.T.: -0.004 min
 Response: 9949948
 Conc: 238.39 ng/ml



#11 AR-1232-1

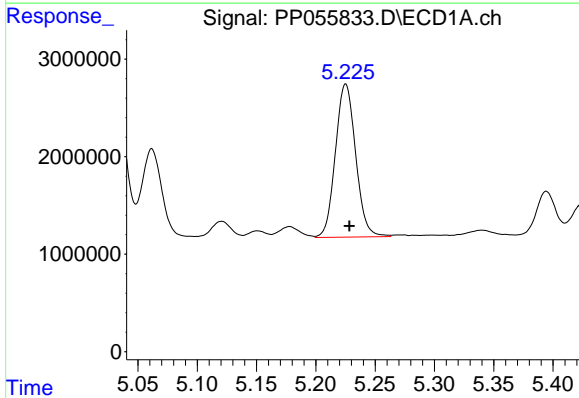
R.T.: 4.695 min
 Delta R.T.: -0.003 min
 Response: 12966123
 Conc: 327.35 ng/ml

Instrument :
 ECD_P
 ClientSampleId :



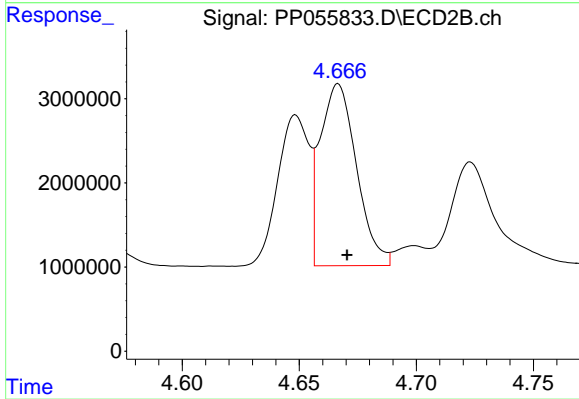
#11 AR-1232-1

R.T.: 3.939 min
 Delta R.T.: -0.003 min
 Response: 9949948
 Conc: 289.03 ng/ml



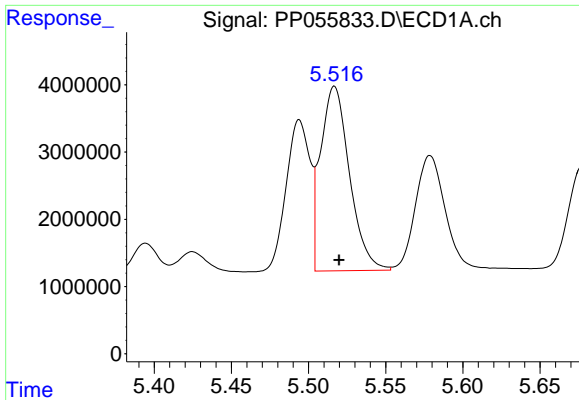
#12 AR-1232-2

R.T.: 5.225 min
 Delta R.T.: -0.003 min
 Response: 18655741
 Conc: 898.14 ng/ml



#12 AR-1232-2

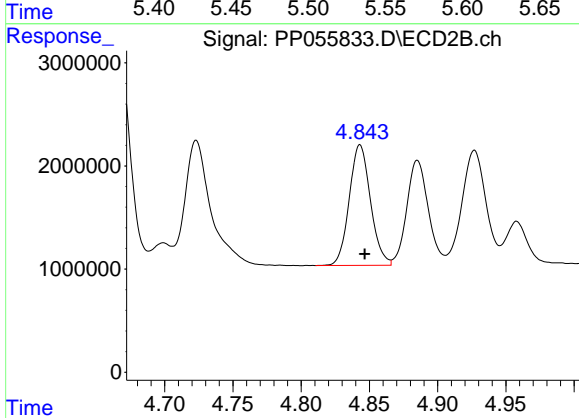
R.T.: 4.667 min
 Delta R.T.: -0.004 min
 Response: 23402047
 Conc: 797.34 ng/ml



#13 AR-1232-3

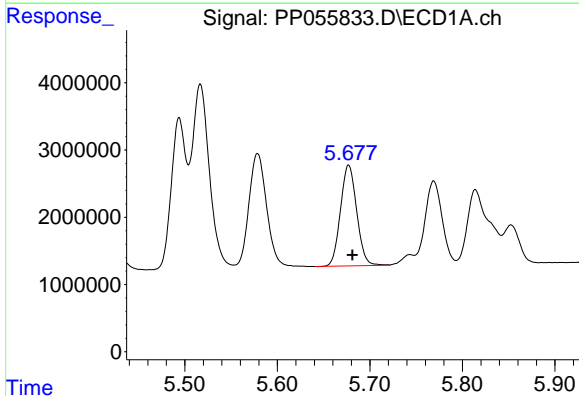
R.T.: 5.517 min
 Delta R.T.: -0.003 min
 Response: 35880815
 Conc: 910.60 ng/ml

Instrument :
 ECD_P
 ClientSampleId :



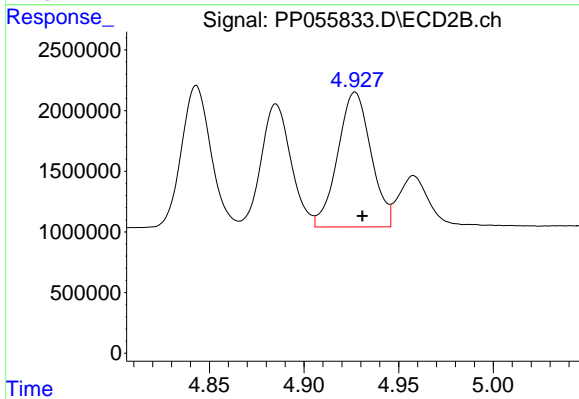
#13 AR-1232-3

R.T.: 4.843 min
 Delta R.T.: -0.003 min
 Response: 12667890
 Conc: 833.56 ng/ml



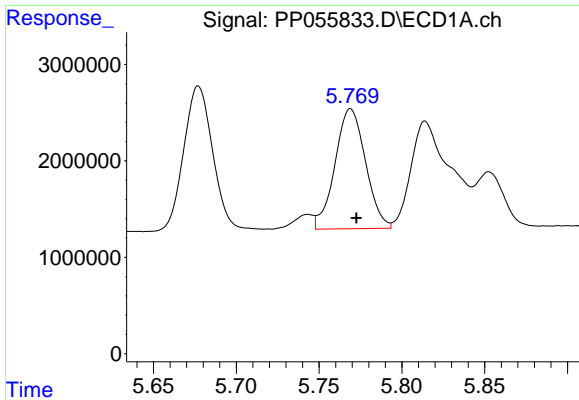
#14 AR-1232-4

R.T.: 5.677 min
 Delta R.T.: -0.004 min
 Response: 18281577
 Conc: 933.22 ng/ml



#14 AR-1232-4

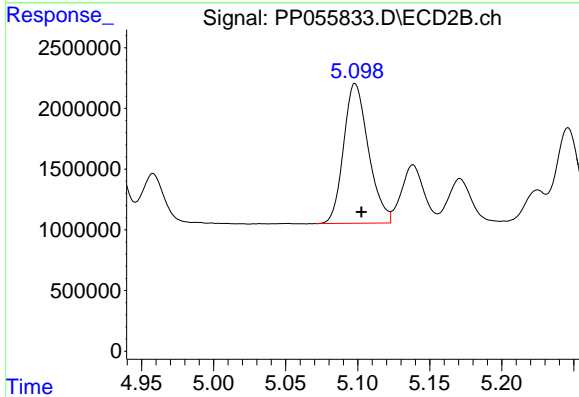
R.T.: 4.927 min
 Delta R.T.: -0.004 min
 Response: 13609054
 Conc: 897.72 ng/ml



#15 AR-1232-5

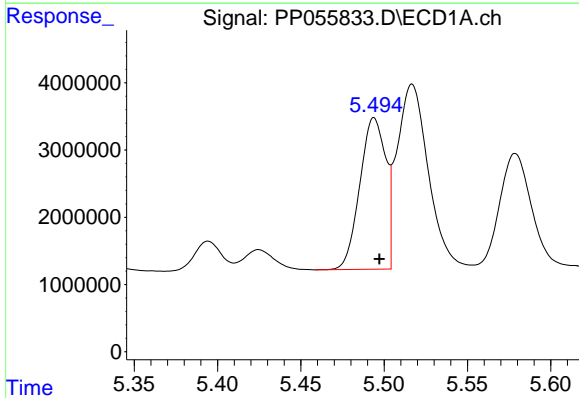
R.T.: 5.769 min
 Delta R.T.: -0.004 min
 Response: 15987746
 Conc: 999.65 ng/ml

Instrument :
 ECD_P
 ClientSampleId :



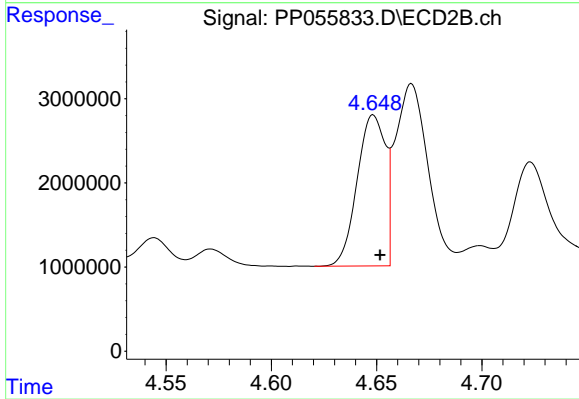
#15 AR-1232-5

R.T.: 5.098 min
 Delta R.T.: -0.004 min
 Response: 13823494
 Conc: 843.33 ng/ml



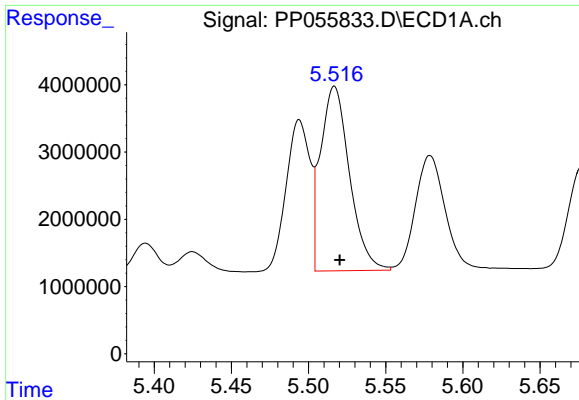
#16 AR-1242-1

R.T.: 5.494 min
 Delta R.T.: -0.003 min
 Response: 24381984
 Conc: 504.95 ng/ml



#16 AR-1242-1

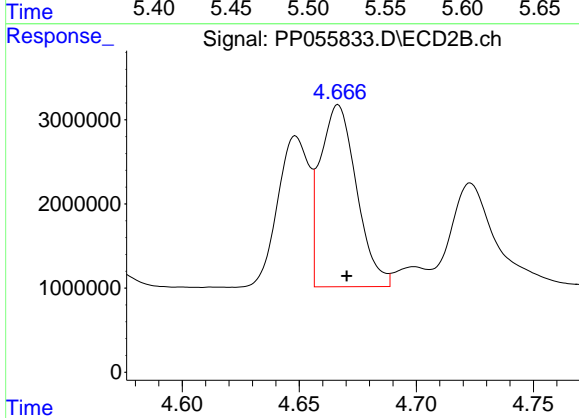
R.T.: 4.649 min
 Delta R.T.: -0.003 min
 Response: 16721718
 Conc: 454.48 ng/ml



#17 AR-1242-2

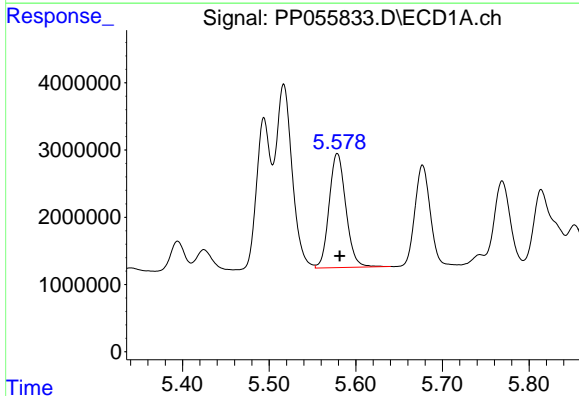
R.T.: 5.517 min
 Delta R.T.: -0.003 min
 Response: 35880815
 Conc: 504.94 ng/ml

Instrument :
 ECD_P
 ClientSampleId :



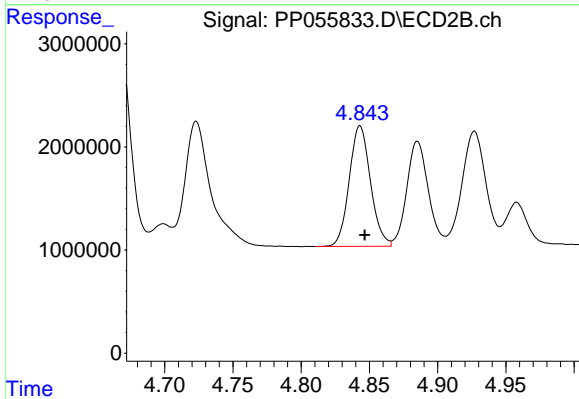
#17 AR-1242-2

R.T.: 4.667 min
 Delta R.T.: -0.004 min
 Response: 23402047
 Conc: 444.30 ng/ml



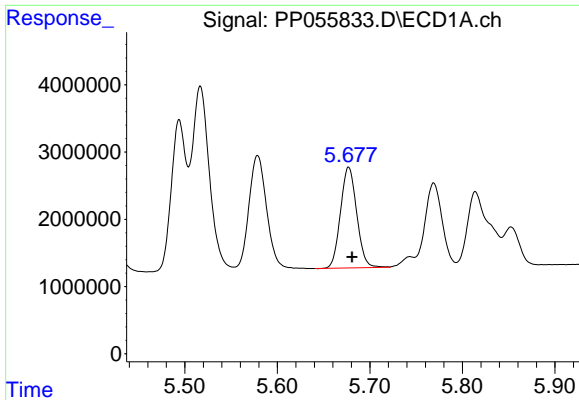
#18 AR-1242-3

R.T.: 5.579 min
 Delta R.T.: -0.003 min
 Response: 22768674
 Conc: 510.35 ng/ml



#18 AR-1242-3

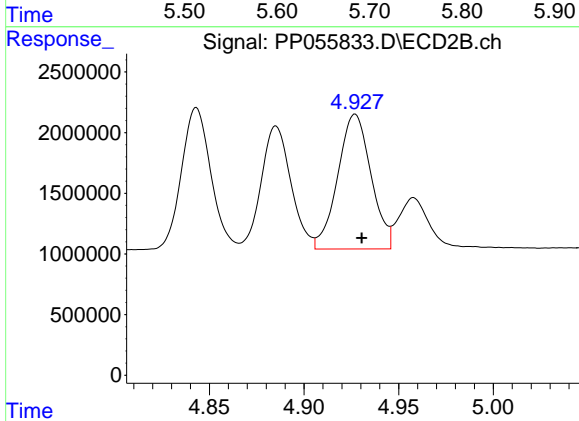
R.T.: 4.843 min
 Delta R.T.: -0.003 min
 Response: 12667890
 Conc: 447.46 ng/ml



#19 AR-1242-4

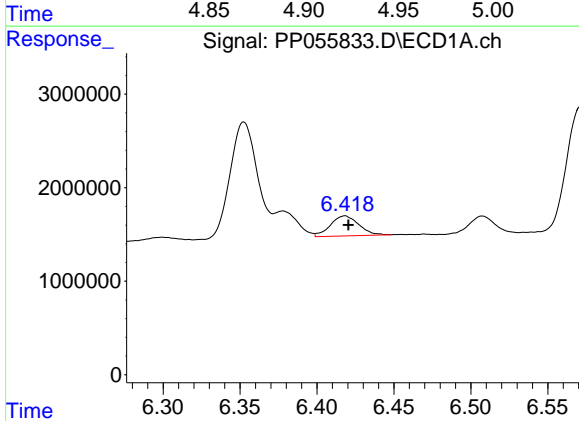
R.T.: 5.677 min
 Delta R.T.: -0.004 min
 Response: 18281577
 Conc: 505.99 ng/ml

Instrument :
 ECD_P
 ClientSampleId :



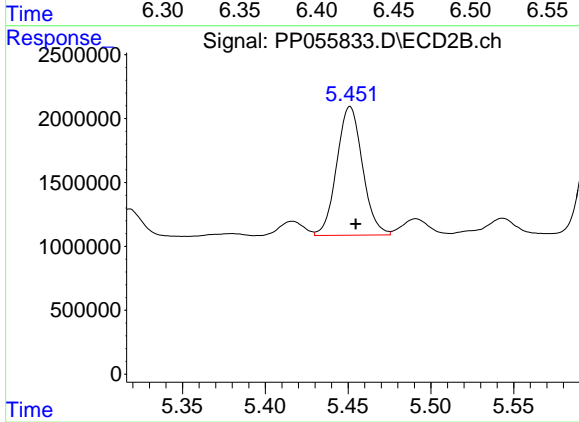
#19 AR-1242-4

R.T.: 4.927 min
 Delta R.T.: -0.004 min
 Response: 13609054
 Conc: 441.10 ng/ml



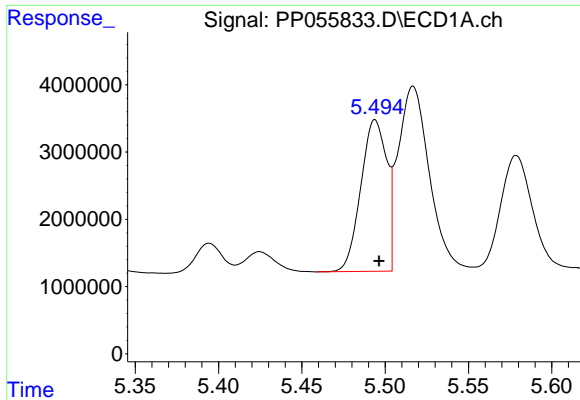
#20 AR-1242-5

R.T.: 6.418 min
 Delta R.T.: -0.002 min
 Response: 2753522
 Conc: 65.73 ng/ml



#20 AR-1242-5

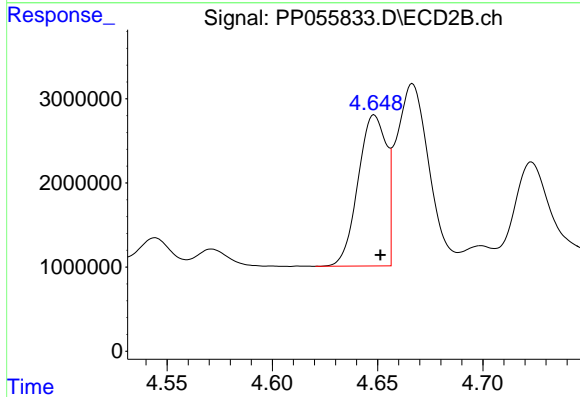
R.T.: 5.451 min
 Delta R.T.: -0.003 min
 Response: 10909053
 Conc: 327.51 ng/ml



#21 AR-1248-1

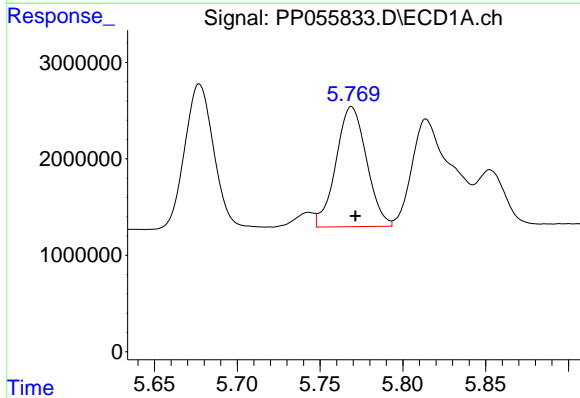
R.T.: 5.494 min
 Delta R.T.: -0.002 min
 Response: 24381984
 Conc: 670.15 ng/ml

Instrument :
 ECD_P
 ClientSampleId :



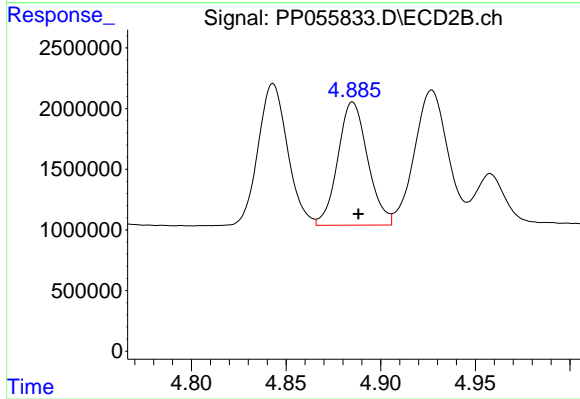
#21 AR-1248-1

R.T.: 4.649 min
 Delta R.T.: -0.003 min
 Response: 16721718
 Conc: 598.74 ng/ml



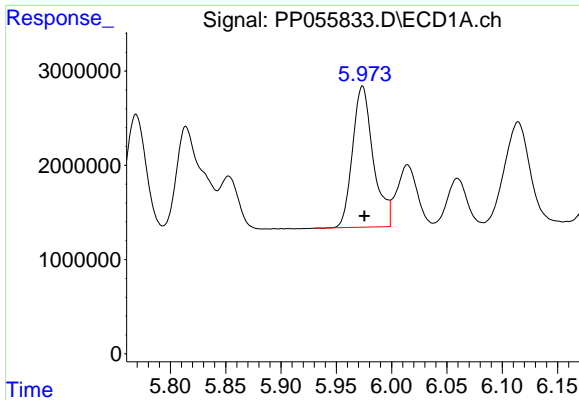
#22 AR-1248-2

R.T.: 5.769 min
 Delta R.T.: -0.002 min
 Response: 15987746
 Conc: 277.86 ng/ml



#22 AR-1248-2

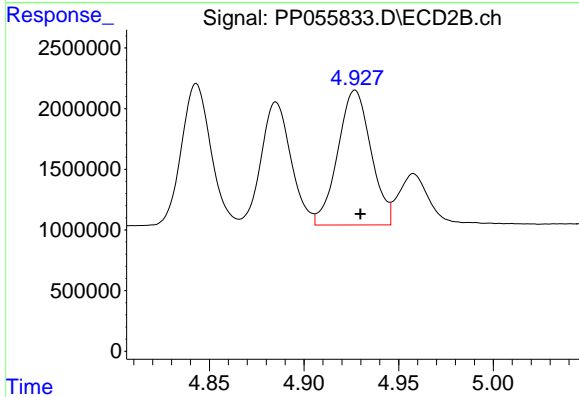
R.T.: 4.885 min
 Delta R.T.: -0.003 min
 Response: 11149179
 Conc: 262.08 ng/ml



#23 AR-1248-3

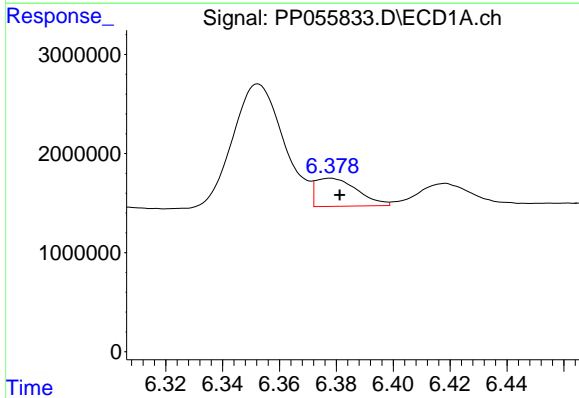
R.T.: 5.974 min
 Delta R.T.: -0.002 min
 Response: 19483717
 Conc: 299.85 ng/ml

Instrument :
 ECD_P
 ClientSampleId :



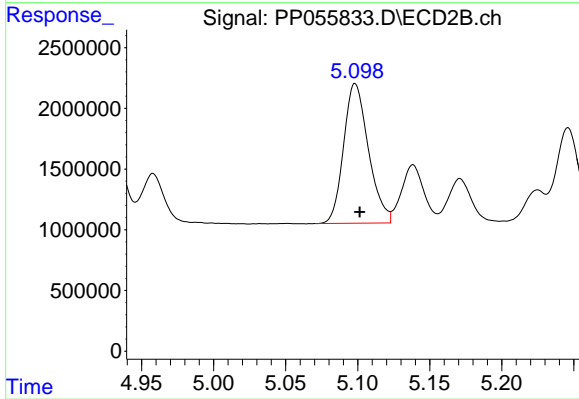
#23 AR-1248-3

R.T.: 4.927 min
 Delta R.T.: -0.003 min
 Response: 13609054
 Conc: 305.81 ng/ml



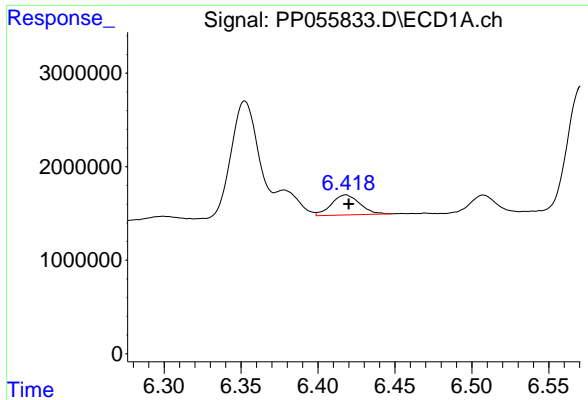
#24 AR-1248-4

R.T.: 6.378 min
 Delta R.T.: -0.003 min
 Response: 2886136
 Conc: 39.78 ng/ml



#24 AR-1248-4

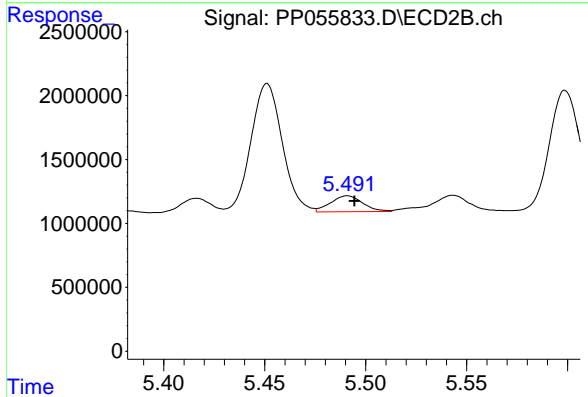
R.T.: 5.098 min
 Delta R.T.: -0.003 min
 Response: 13823494
 Conc: 269.98 ng/ml



#25 AR-1248-5

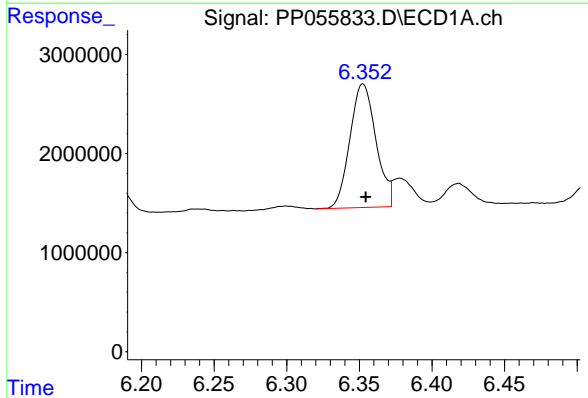
R.T.: 6.418 min
 Delta R.T.: -0.002 min
 Response: 2753522
 Conc: 38.85 ng/ml

Instrument :
 ECD_P
 ClientSampleId :



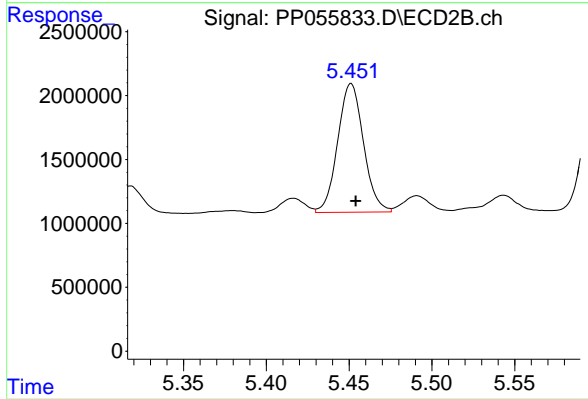
#25 AR-1248-5

R.T.: 5.491 min
 Delta R.T.: -0.003 min
 Response: 1391398
 Conc: 31.57 ng/ml



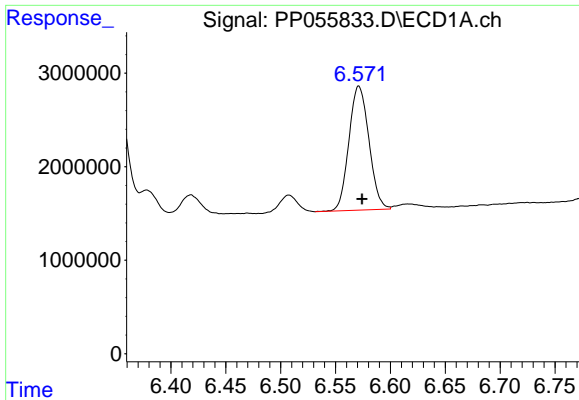
#26 AR-1254-1

R.T.: 6.353 min
 Delta R.T.: -0.002 min
 Response: 15570450
 Conc: 211.78 ng/ml



#26 AR-1254-1

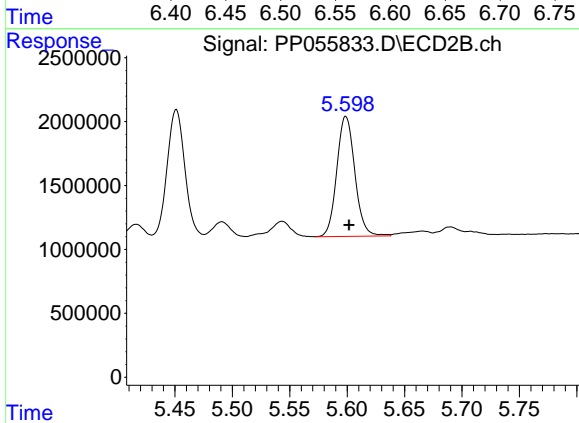
R.T.: 5.451 min
 Delta R.T.: -0.003 min
 Response: 10909053
 Conc: 148.28 ng/ml



#27 AR-1254-2

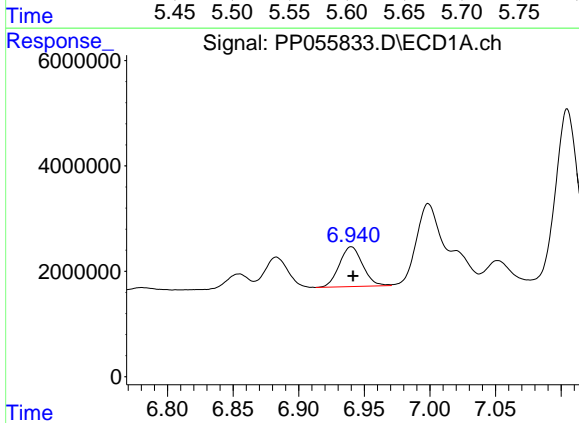
R.T.: 6.571 min
 Delta R.T.: -0.003 min
 Response: 16866620
 Conc: 146.15 ng/ml

Instrument :
 ECD_P
 ClientSampleId :



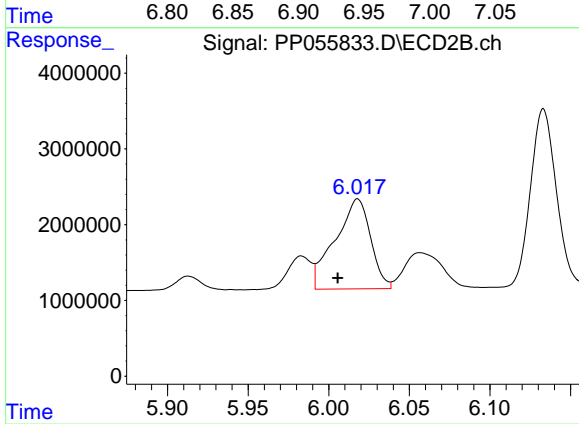
#27 AR-1254-2

R.T.: 5.599 min
 Delta R.T.: -0.003 min
 Response: 10307414
 Conc: 163.83 ng/ml



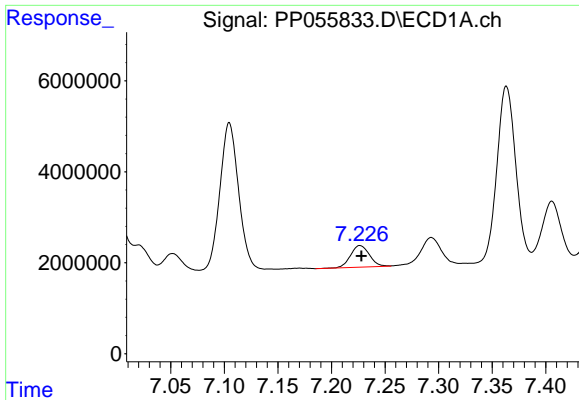
#28 AR-1254-3

R.T.: 6.940 min
 Delta R.T.: -0.001 min
 Response: 9329071
 Conc: 75.80 ng/ml



#28 AR-1254-3

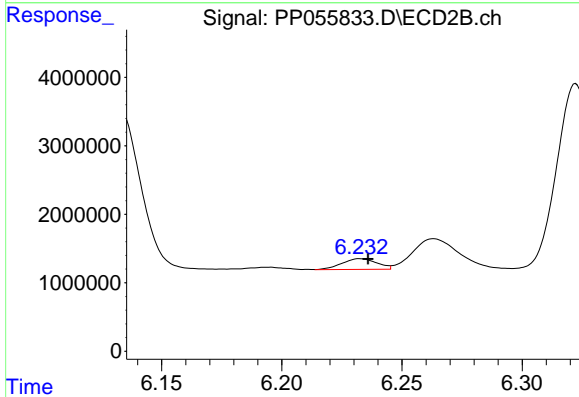
R.T.: 6.018 min
 Delta R.T.: 0.012 min
 Response: 18181034
 Conc: 185.37 ng/ml



#29 AR-1254-4

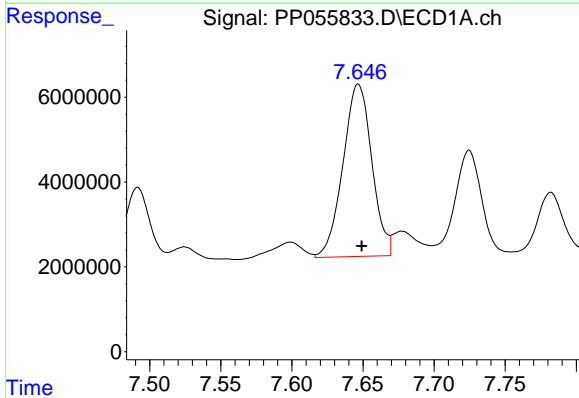
R.T.: 7.227 min
 Delta R.T.: -0.001 min
 Response: 5804849
 Conc: 63.20 ng/ml

Instrument :
 ECD_P
 ClientSampleId :



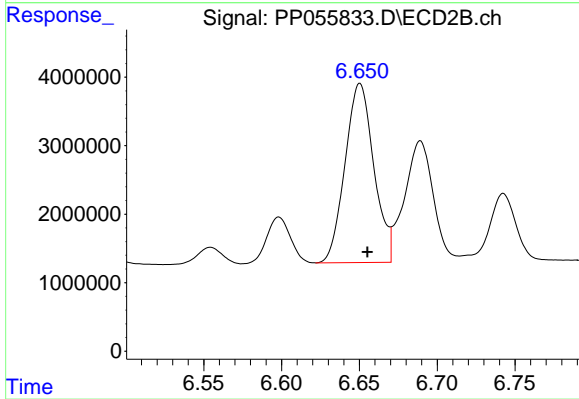
#29 AR-1254-4

R.T.: 6.233 min
 Delta R.T.: -0.003 min
 Response: 1589544
 Conc: 28.88 ng/ml



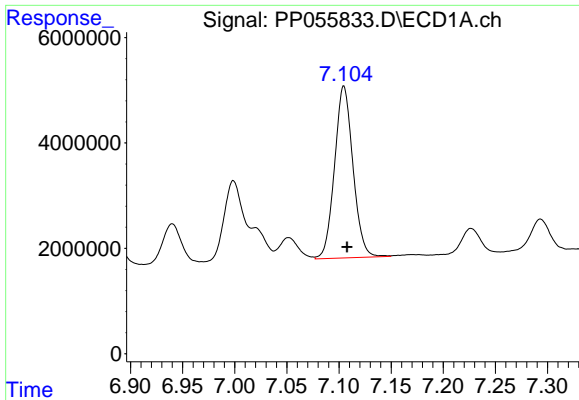
#30 AR-1254-5

R.T.: 7.647 min
 Delta R.T.: -0.003 min
 Response: 57413810
 Conc: 546.26 ng/ml



#30 AR-1254-5

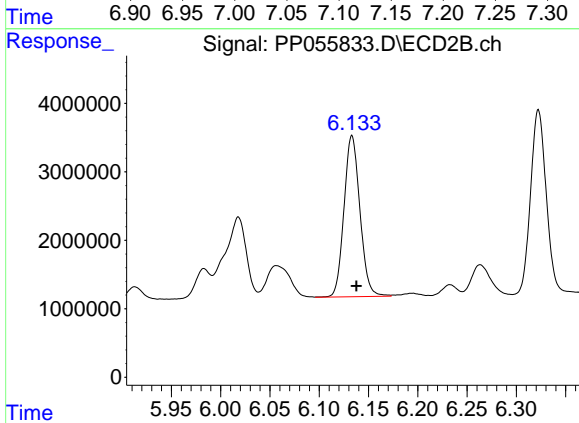
R.T.: 6.650 min
 Delta R.T.: -0.005 min
 Response: 33624264
 Conc: 413.84 ng/ml



#31 AR-1260-1

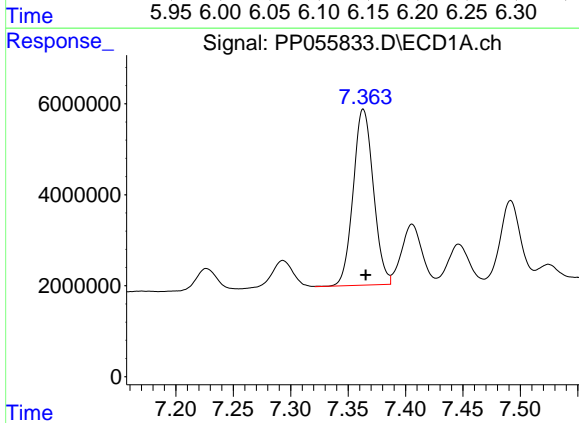
R.T.: 7.105 min
 Delta R.T.: -0.003 min
 Response: 40074313
 Conc: 387.03 ng/ml

Instrument :
 ECD_P
 ClientSampleId :



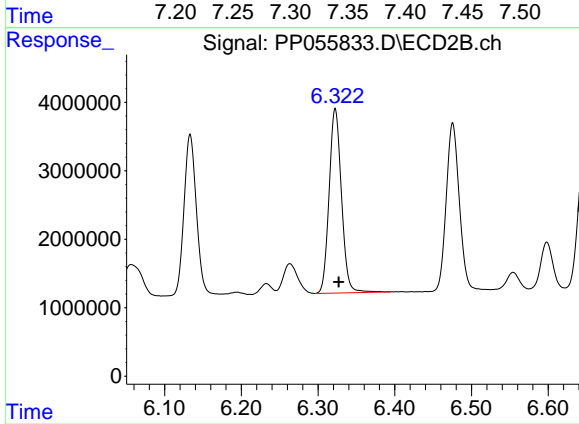
#31 AR-1260-1

R.T.: 6.133 min
 Delta R.T.: -0.005 min
 Response: 26458398
 Conc: 362.93 ng/ml



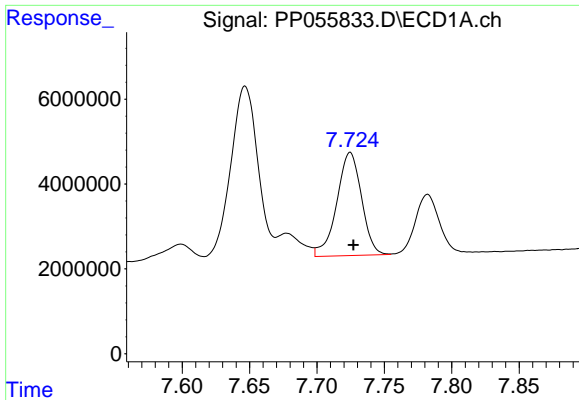
#32 AR-1260-2

R.T.: 7.363 min
 Delta R.T.: -0.002 min
 Response: 47396608
 Conc: 376.85 ng/ml



#32 AR-1260-2

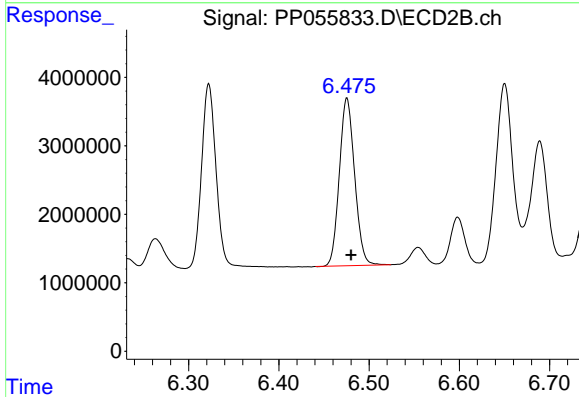
R.T.: 6.322 min
 Delta R.T.: -0.004 min
 Response: 30106939
 Conc: 368.97 ng/ml



#33 AR-1260-3

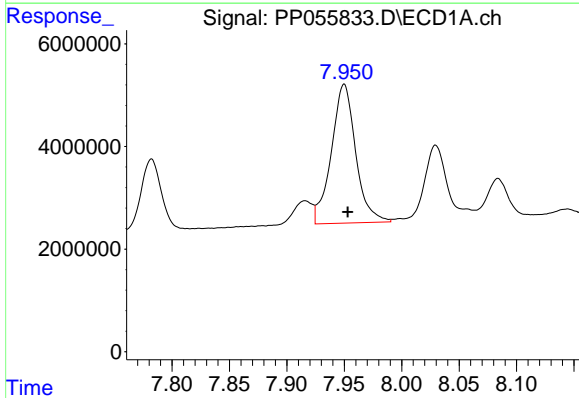
R.T.: 7.725 min
 Delta R.T.: -0.002 min
 Response: 31194558
 Conc: 355.18 ng/ml

Instrument :
 ECD_P
 ClientSampleId :



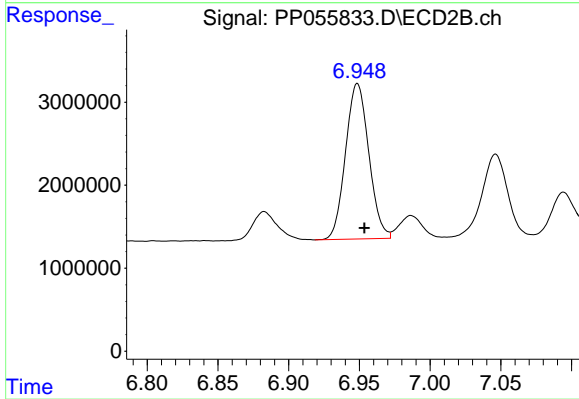
#33 AR-1260-3

R.T.: 6.476 min
 Delta R.T.: -0.005 min
 Response: 28833858
 Conc: 341.20 ng/ml



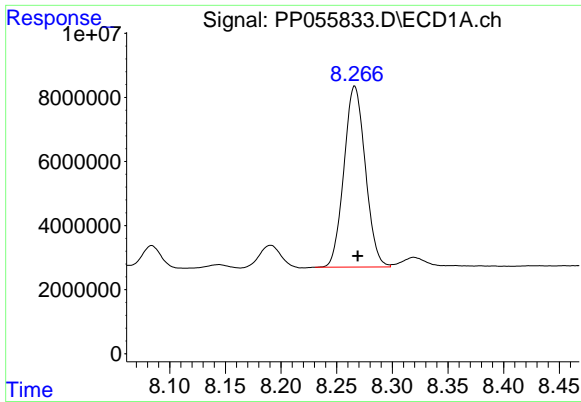
#34 AR-1260-4

R.T.: 7.950 min
 Delta R.T.: -0.003 min
 Response: 40059585
 Conc: 372.73 ng/ml



#34 AR-1260-4

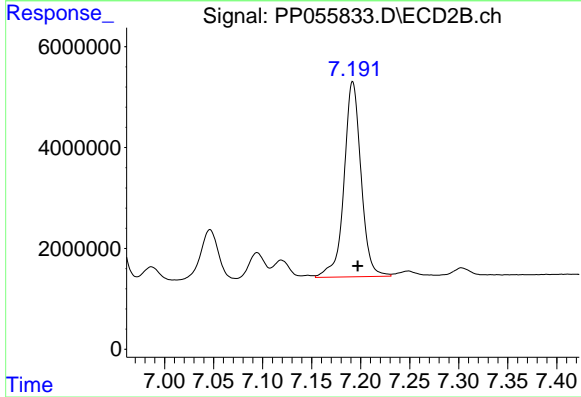
R.T.: 6.949 min
 Delta R.T.: -0.005 min
 Response: 21475460
 Conc: 335.55 ng/ml



#35 AR-1260-5

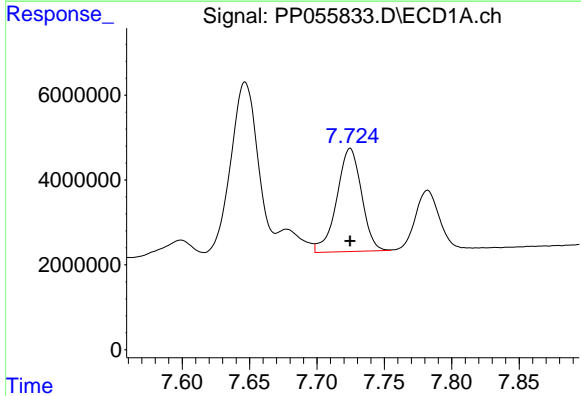
R.T.: 8.266 min
 Delta R.T.: -0.003 min
 Response: 75466760
 Conc: 365.55 ng/ml

Instrument :
 ECD_P
 ClientSampleId :



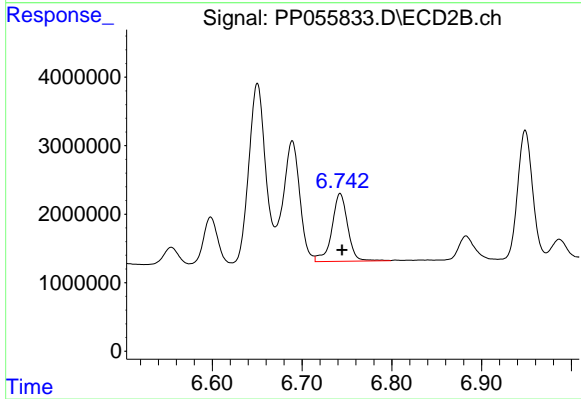
#35 AR-1260-5

R.T.: 7.192 min
 Delta R.T.: -0.005 min
 Response: 46737210
 Conc: 345.28 ng/ml



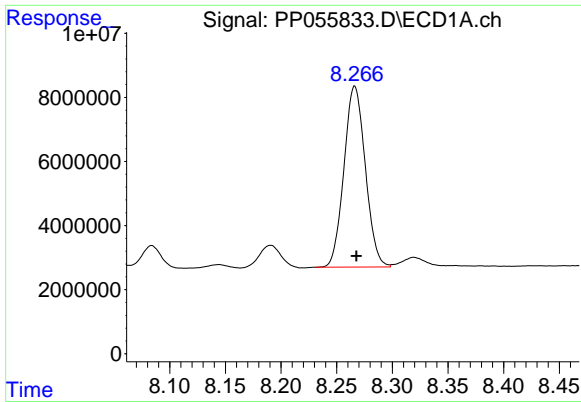
#36 AR-1262-1

R.T.: 7.725 min
 Delta R.T.: 0.000 min
 Response: 31194558
 Conc: 264.40 ng/ml



#36 AR-1262-1

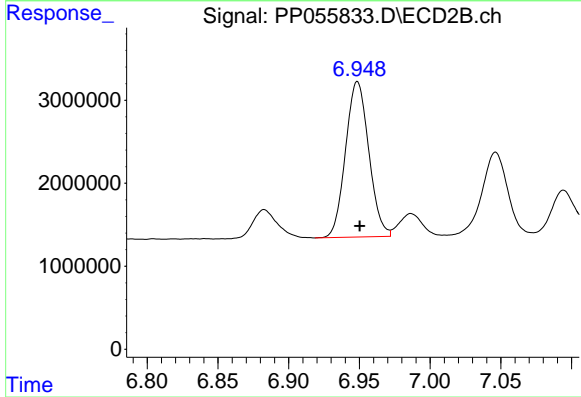
R.T.: 6.742 min
 Delta R.T.: -0.002 min
 Response: 12140796
 Conc: 344.44 ng/ml



#37 AR-1262-2

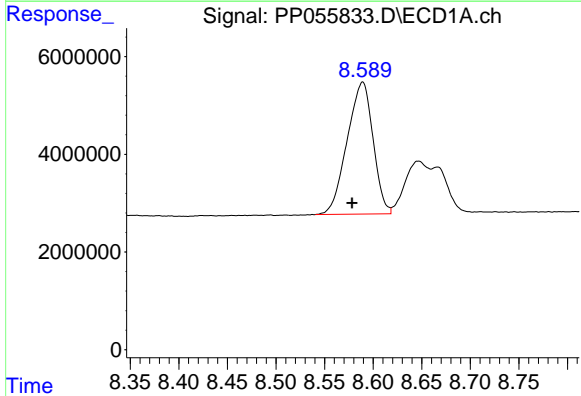
R.T.: 8.266 min
Delta R.T.: -0.001 min
Response: 75466760
Conc: 343.85 ng/ml

Instrument :
ECD_P
ClientSampleId :



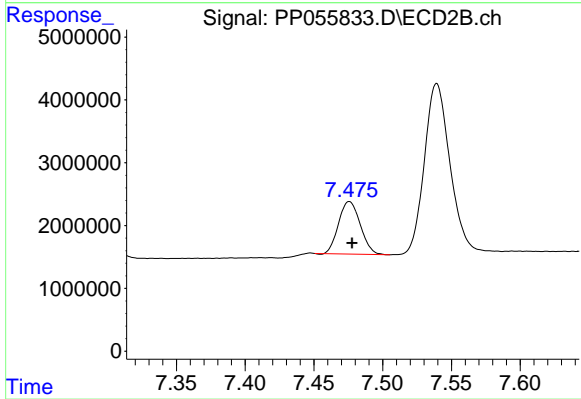
#37 AR-1262-2

R.T.: 6.949 min
Delta R.T.: -0.002 min
Response: 21475460
Conc: 289.22 ng/ml



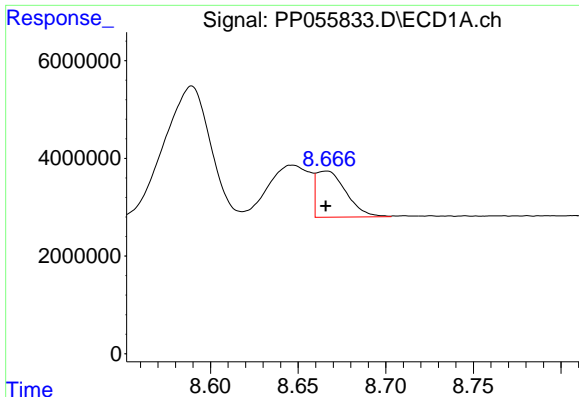
#38 AR-1262-3

R.T.: 8.589 min
Delta R.T.: 0.011 min
Response: 50077272
Conc: 327.56 ng/ml



#38 AR-1262-3

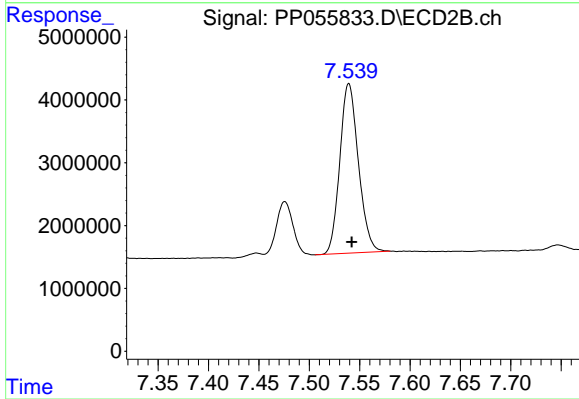
R.T.: 7.476 min
Delta R.T.: -0.002 min
Response: 9174336
Conc: 165.35 ng/ml



#39 AR-1262-4

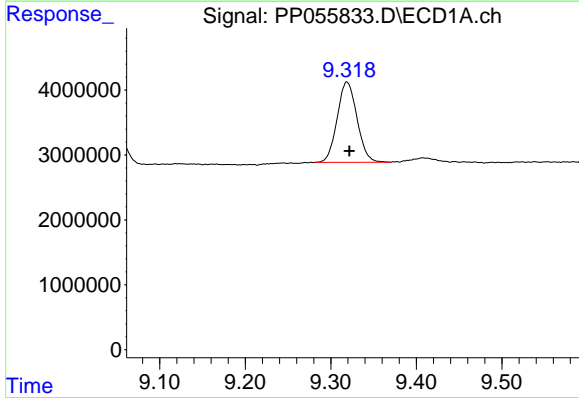
R.T.: 8.666 min
 Delta R.T.: 0.000 min
 Response: 11166100
 Conc: 148.32 ng/ml

Instrument :
 ECD_P
 ClientSampleId :



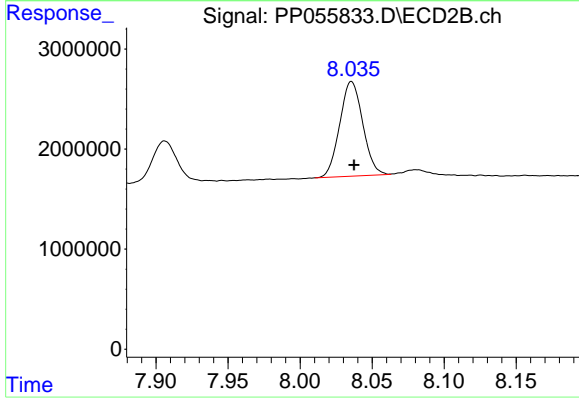
#39 AR-1262-4

R.T.: 7.539 min
 Delta R.T.: -0.003 min
 Response: 34658480
 Conc: 341.41 ng/ml



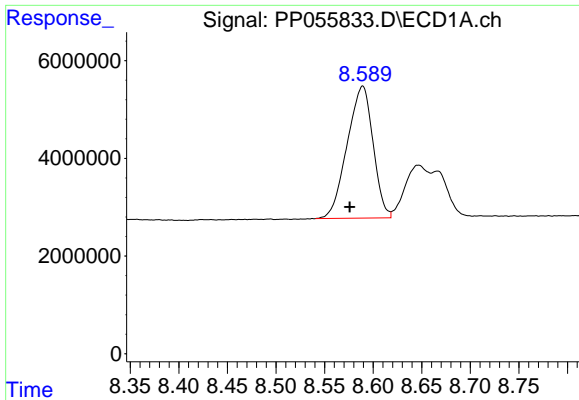
#40 AR-1262-5

R.T.: 9.319 min
 Delta R.T.: -0.003 min
 Response: 19949144
 Conc: 241.97 ng/ml



#40 AR-1262-5

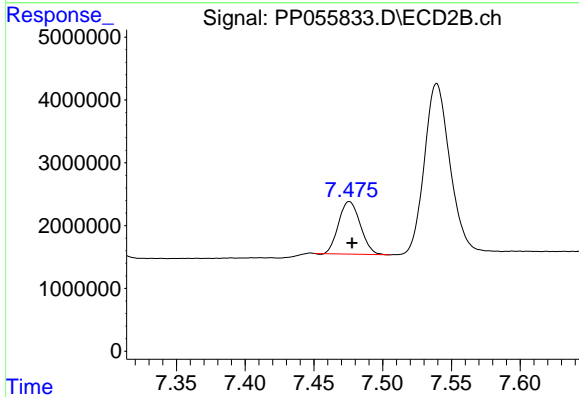
R.T.: 8.036 min
 Delta R.T.: -0.002 min
 Response: 10515754
 Conc: 231.23 ng/ml



#41 AR-1268-1

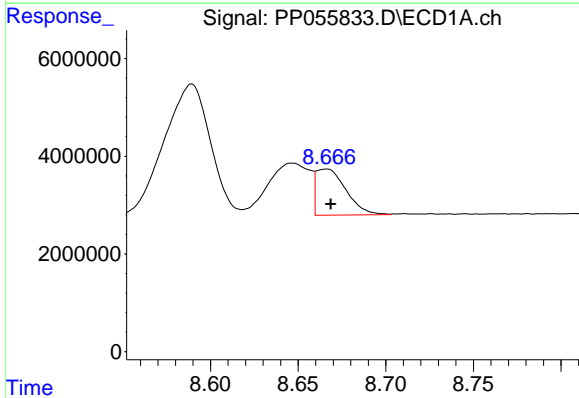
R.T.: 8.589 min
 Delta R.T.: 0.013 min
 Response: 50077272
 Conc: 175.46 ng/ml

Instrument :
 ECD_P
 ClientSampleId :



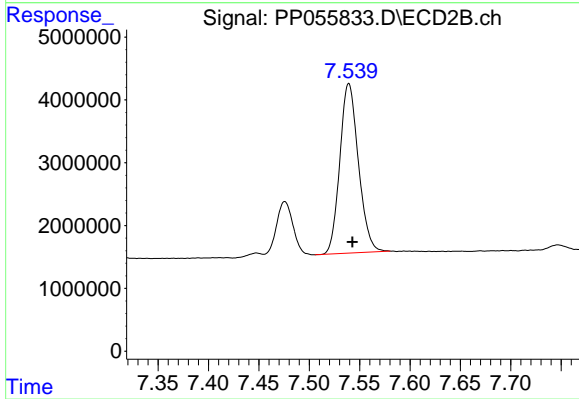
#41 AR-1268-1

R.T.: 7.476 min
 Delta R.T.: -0.002 min
 Response: 9174336
 Conc: 54.56 ng/ml



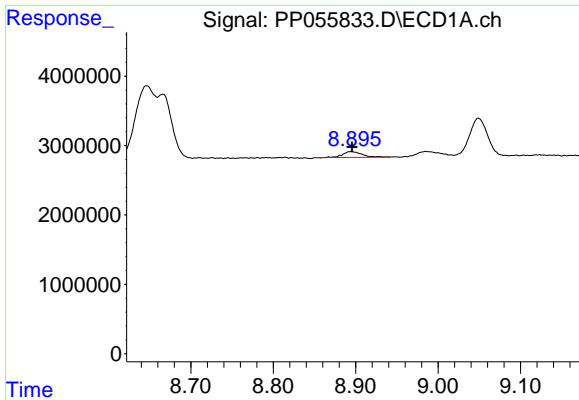
#42 AR-1268-2

R.T.: 8.666 min
 Delta R.T.: -0.003 min
 Response: 11166100
 Conc: 41.88 ng/ml



#42 AR-1268-2

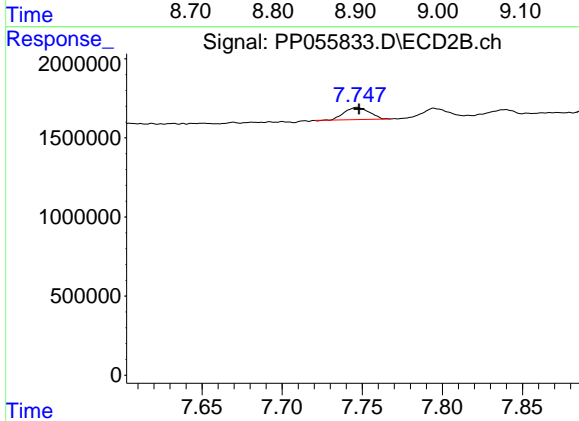
R.T.: 7.539 min
 Delta R.T.: -0.003 min
 Response: 34658480
 Conc: 226.58 ng/ml



#43 AR-1268-3

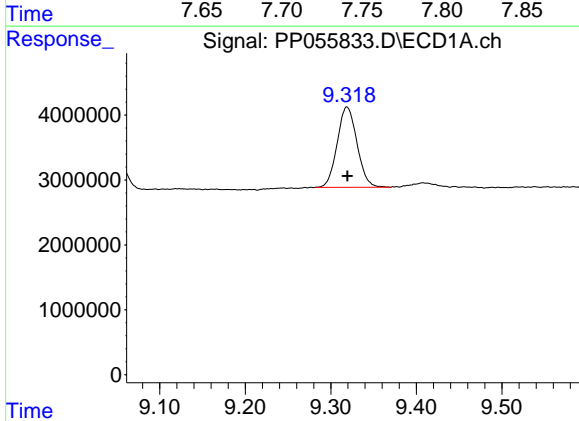
R.T.: 8.895 min
 Delta R.T.: 0.000 min
 Response: 1410392
 Conc: 5.99 ng/ml

Instrument :
 ECD_P
 ClientSampleId :



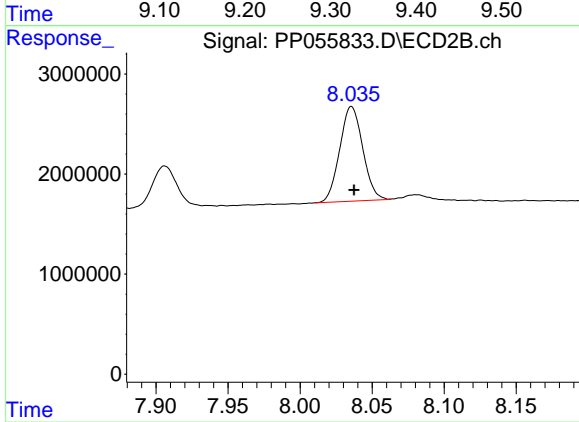
#43 AR-1268-3

R.T.: 7.747 min
 Delta R.T.: -0.001 min
 Response: 833703
 Conc: 6.08 ng/ml



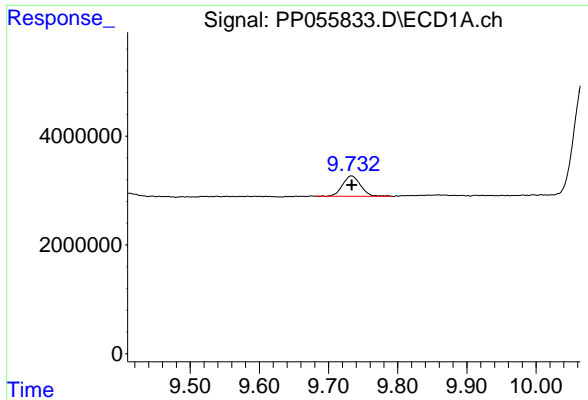
#44 AR-1268-4

R.T.: 9.319 min
 Delta R.T.: 0.000 min
 Response: 19949144
 Conc: 202.06 ng/ml



#44 AR-1268-4

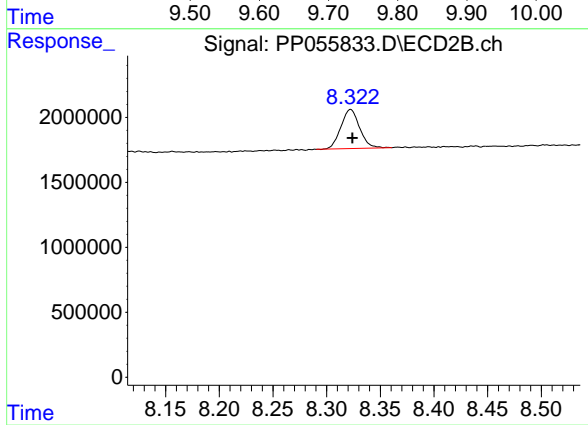
R.T.: 8.036 min
 Delta R.T.: -0.002 min
 Response: 10515754
 Conc: 191.14 ng/ml



#45 AR-1268-5

R.T.: 9.733 min
Delta R.T.: 0.000 min
Response: 6691808
Conc: 8.89 ng/ml

Instrument :
ECD_P
ClientSampleId :



#45 AR-1268-5

R.T.: 8.322 min
Delta R.T.: -0.002 min
Response: 3672983
Conc: 9.11 ng/ml