

Data Path : Z:\pestpcbsrv\HPCHEM1\ECD_P\Data\PP022223\
 Data File : PP055842.D
 Signal(s) : Signal #1: ECD1A.ch Signal #2: ECD2B.ch
 Acq On : 22 Feb 2023 14:51
 Operator : YP\AJ
 Sample : AR1660CCC500
 Misc :
 ALS Vial : 3 Sample Multiplier: 1

Instrument :
 ECD_P
 ClientSampleId :

Integration File signal 1: autoint1.e
 Integration File signal 2: autoint2.e
 Quant Time: Feb 22 20:34:13 2023
 Quant Method : Z:\pestpcbsrv\HPCHEM1\ECD_P\methods\PP021723.M
 Quant Title : GC EXTRACTABLES
 QLast Update : Mon Feb 20 05:24:03 2023
 Response via : Initial Calibration
 Integrator: ChemStation

Volume Inj. : 2 µl
 Signal #1 Phase : ZB-MR1 Signal #2 Phase: ZB-MR2
 Signal #1 Info : 30Mx0.32mmx 0.50µ Signal #2 Info : 30M x 0.32mm x 0.25µm

Compound	RT#1	RT#2	Resp#1	Resp#2	ng/ml	ng/ml

System Monitoring Compounds						
1) SA Tetrachlo...	4.324	3.567	92882509	73526562	57.647	50.355
2) SA Decachlor...	10.070	8.571	99616548	56065104	48.833	49.419
Target Compounds						
3) L1 AR-1016-1	5.494	4.649	31427105	22396331	526.649	497.364
4) L1 AR-1016-2	5.516	4.668	45204991	31824647	516.692	490.033
5) L1 AR-1016-3	5.578	4.844	28394270	17141596	511.150	493.241
6) L1 AR-1016-4	5.677	4.886	22428115	14397852	503.308	481.682
7) L1 AR-1016-5	5.973	5.099	23556150	19011506	487.860	480.896
8) L2 AR-1221-1	4.527	3.778	3313826	2609740	159.207	145.287
9) L2 AR-1221-2	4.619	3.865	4892079	3723399	307.548	283.507
10) L2 AR-1221-3	4.694	3.940	18183764	14236312	374.826	341.090
11) L3 AR-1232-1	4.694	3.940	18183764	14236312	459.071	413.540
12) L3 AR-1232-2	5.225	4.668	24011789	31824647	1156.001	1084.305
13) L3 AR-1232-3	5.516	4.844	45204991	17141596	1147.230	1127.938
14) L3 AR-1232-4	5.677	4.928	22428115	17684568	1144.893	1166.557
15) L3 AR-1232-5	5.769	5.099	18631561	19011506	1164.960	1159.839
16) L4 AR-1242-1	5.494	4.649	31427105	22396331	650.849	608.711
17) L4 AR-1242-2	5.516	4.668	45204991	31824647	636.162	604.207
18) L4 AR-1242-3	5.578	4.844	28394270	17141596	636.440	605.485
19) L4 AR-1242-4	5.677	4.928	22428115	17684568	620.754	573.191
20) L4 AR-1242-5	6.418	5.452	7146607	17571785	170.607	527.534 #
21) L5 AR-1248-1	5.494	4.649	31427105	22396331	863.783	801.928
22) L5 AR-1248-2	5.769	4.886	18631561	14397852	323.814	338.449
23) L5 AR-1248-3	5.973	4.928	23556150	17684568	362.523	397.393
24) L5 AR-1248-4	6.378	5.099	8373340	19011506	115.410	371.308 #
25) L5 AR-1248-5	6.418	5.492	7146607	4277395	100.830	97.046
26) L6 AR-1254-1	6.352	5.452	20836993	17571785	283.412	238.837
27) L6 AR-1254-2	6.572	5.600	18663564	12789305	161.723	203.273 #
28) L6 AR-1254-3	6.939	6.019	11006689	22297486	89.435	227.346 #
29) L6 AR-1254-4	7.226	6.233	7067962	1475673	76.951	26.808 #
30) L6 AR-1254-5	7.646	6.651	65622988	38961816	624.368	479.537
31) L7 AR-1260-1	7.105	6.134	50053347	33076901	483.402	453.720
32) L7 AR-1260-2	7.363	6.323	57914672	37722176	460.474	462.294
33) L7 AR-1260-3	7.724	6.476	43769163	35357141	498.355	418.396
34) L7 AR-1260-4	7.950	6.949	52046398	29800833	484.265	465.633
35) L7 AR-1260-5	8.266	7.192	104.1E6	63446562	504.321	468.727
36) L8 AR-1262-1	7.724	6.743	43769163	16351264	370.985	463.890 #
37) L8 AR-1262-2	8.266	6.949	104.1E6	29800833	474.386	401.341
38) L8 AR-1262-3	8.588	7.476	68041739	13838658	445.070	249.416 #
39) L8 AR-1262-4	8.664	7.539	18718640	45951535	248.637	452.653 #
40) L8 AR-1262-5	9.319	8.036	29505655	15501354	357.877	340.864
41) L9 AR-1268-1	8.588	7.476	68041739	13838658	238.409	82.306 #

Data Path : Z:\pestpcbsrv\HPCHEM1\ECD_P\Data\PP022223\
 Data File : PP055842.D
 Signal(s) : Signal #1: ECD1A.ch Signal #2: ECD2B.ch
 Acq On : 22 Feb 2023 14:51
 Operator : YP\AJ
 Sample : AR1660CCC500
 Misc :
 ALS Vial : 3 Sample Multiplier: 1

Instrument :
 ECD_P
 ClientSampleId :

Integration File signal 1: autoint1.e
 Integration File signal 2: autoint2.e
 Quant Time: Feb 22 20:34:13 2023
 Quant Method : Z:\pestpcbsrv\HPCHEM1\ECD_P\methods\PP021723.M
 Quant Title : GC EXTRACTABLES
 QLast Update : Mon Feb 20 05:24:03 2023
 Response via : Initial Calibration
 Integrator: ChemStation

Volume Inj. : 2 µl
 Signal #1 Phase : ZB-MR1 Signal #2 Phase: ZB-MR2
 Signal #1 Info : 30Mx0.32mmx 0.50µ Signal #2 Info : 30M x 0.32mm x 0.25µm

	Compound	RT#1	RT#2	Resp#1	Resp#2	ng/ml	ng/ml
42)	L9 AR-1268-2	8.664	7.539	18718640	45951535	70.204	300.414 #
43)	L9 AR-1268-3	8.895	7.746	1408355	809128	5.985	5.897
44)	L9 AR-1268-4	9.319	8.036	29505655	15501354	298.855	281.755
45)	L9 AR-1268-5	9.733	8.322	7847272	4722611	10.424	11.708

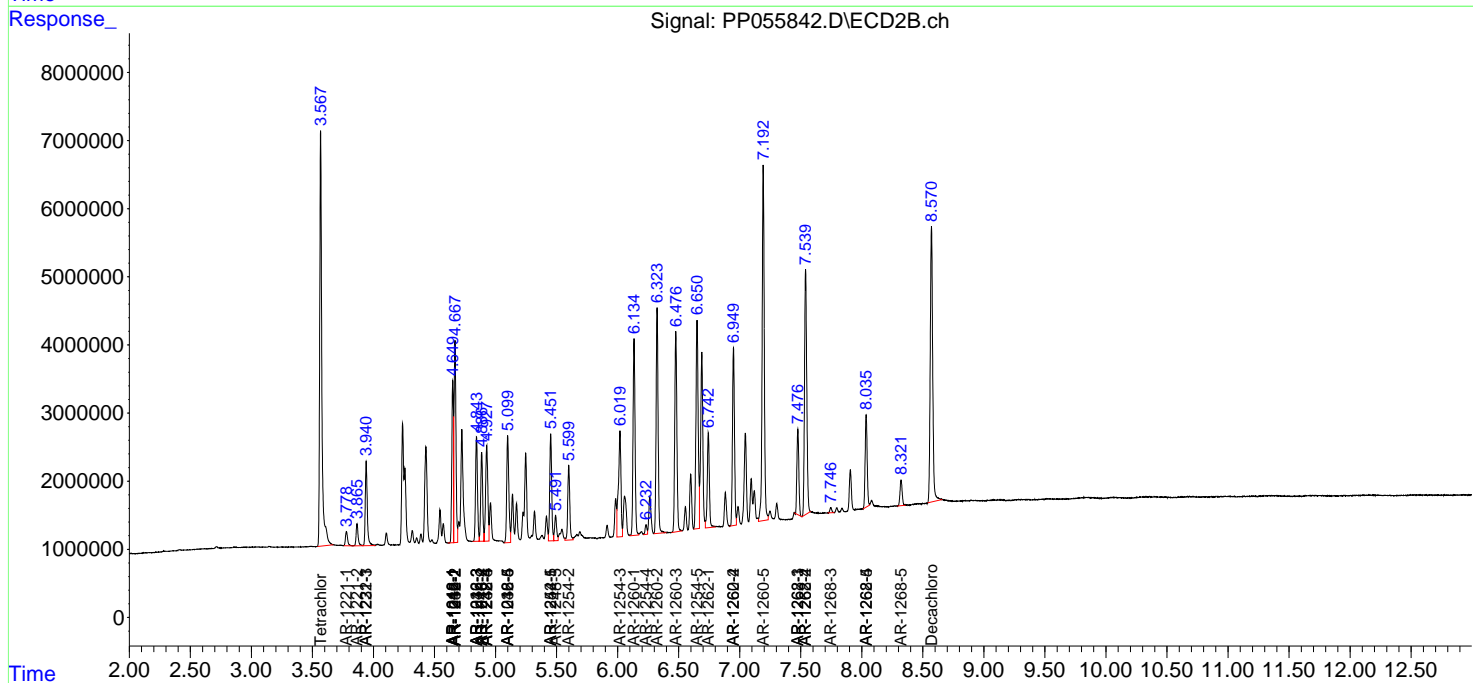
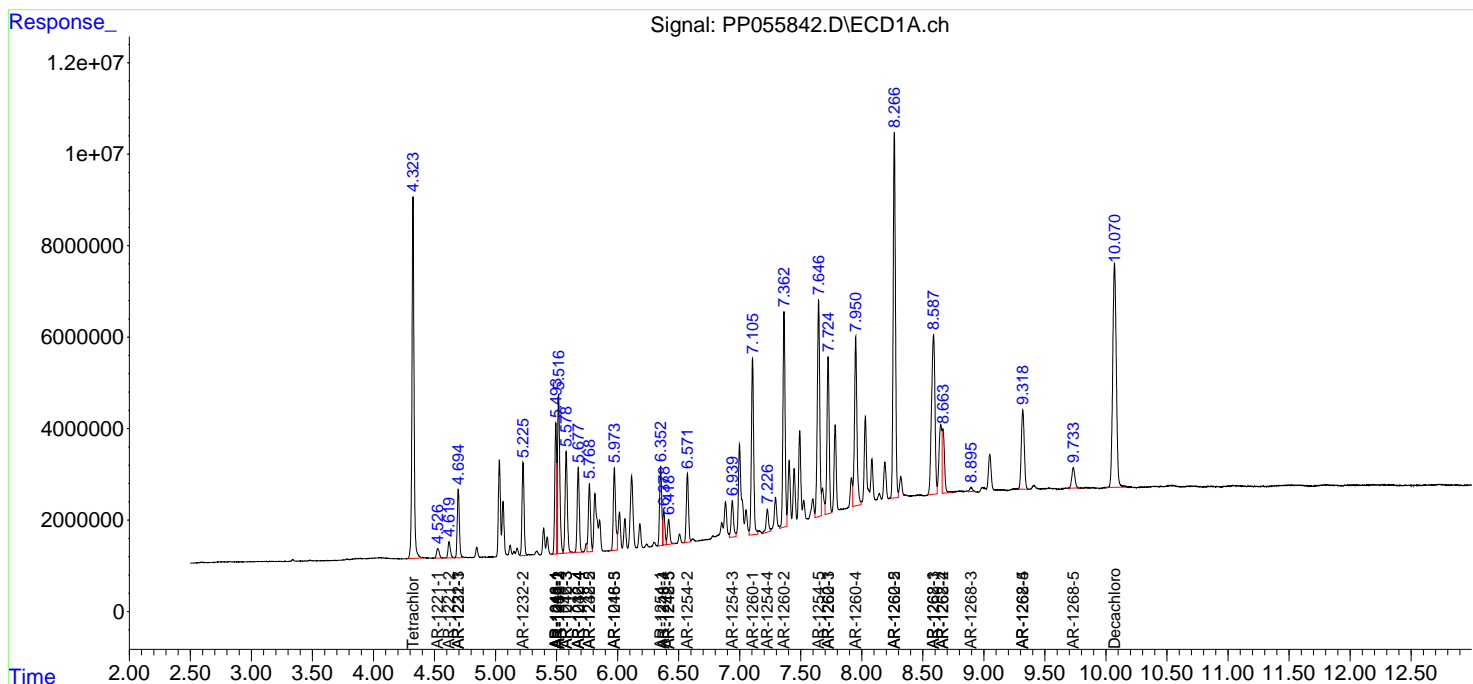
(f)=RT Delta > 1/2 Window (#)=Amounts differ by > 25% (m)=manual int.

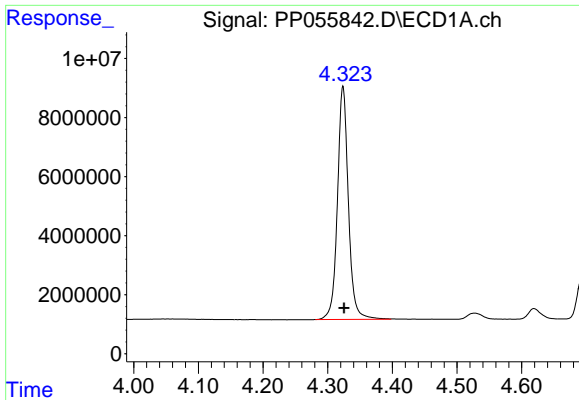
Data Path : Z:\pestpcbsrv\HPCHEM1\ECD_P\Data\PP022223\
 Data File : PP055842.D
 Signal(s) : Signal #1: ECD1A.ch Signal #2: ECD2B.ch
 Acq On : 22 Feb 2023 14:51
 Operator : YP\AJ
 Sample : AR1660CCC500
 Misc :
 ALS Vial : 3 Sample Multiplier: 1

Instrument :
 ECD_P
 ClientSampleId :

Integration File signal 1: autoint1.e
 Integration File signal 2: autoint2.e
 Quant Time: Feb 22 20:34:13 2023
 Quant Method : Z:\pestpcbsrv\HPCHEM1\ECD_P\methods\PP021723.M
 Quant Title : GC EXTRACTABLES
 QLast Update : Mon Feb 20 05:24:03 2023
 Response via : Initial Calibration
 Integrator: ChemStation

Volume Inj. : 2 µl
 Signal #1 Phase : ZB-MR1 Signal #2 Phase: ZB-MR2
 Signal #1 Info : 30Mx0.32mmx 0.50µ Signal #2 Info : 30M x 0.32mm x 0.25µm

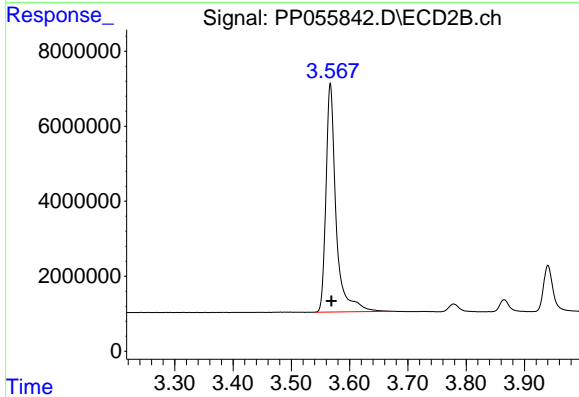




#1 Tetrachloro-m-xylene

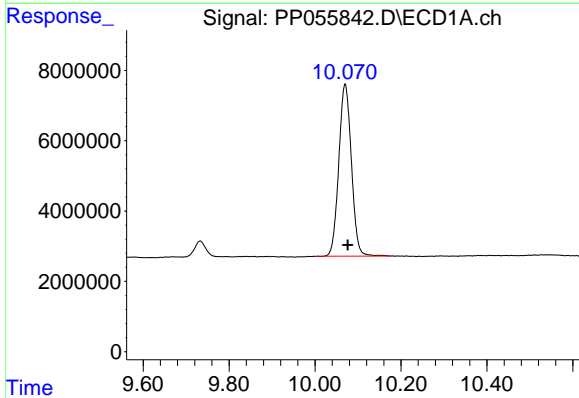
R.T.: 4.324 min
Delta R.T.: -0.001 min
Response: 92882509
Conc: 57.65 ng/ml

Instrument :
ECD_P
ClientSampleId :



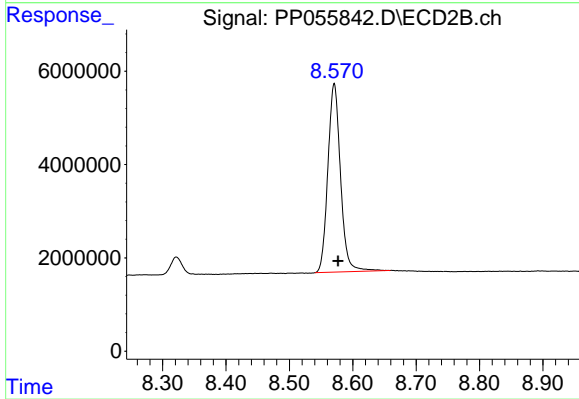
#1 Tetrachloro-m-xylene

R.T.: 3.567 min
Delta R.T.: -0.002 min
Response: 73526562
Conc: 50.35 ng/ml



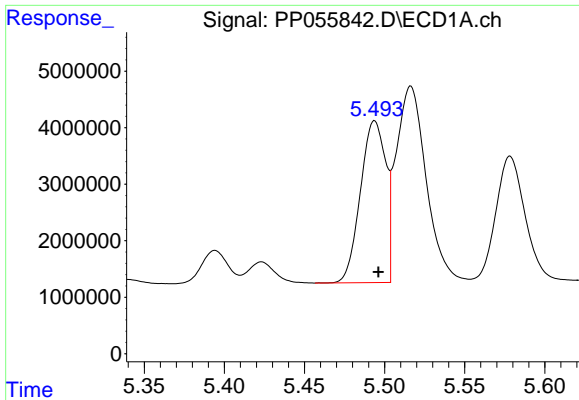
#2 Decachlorobiphenyl

R.T.: 10.070 min
Delta R.T.: -0.006 min
Response: 99616548
Conc: 48.83 ng/ml



#2 Decachlorobiphenyl

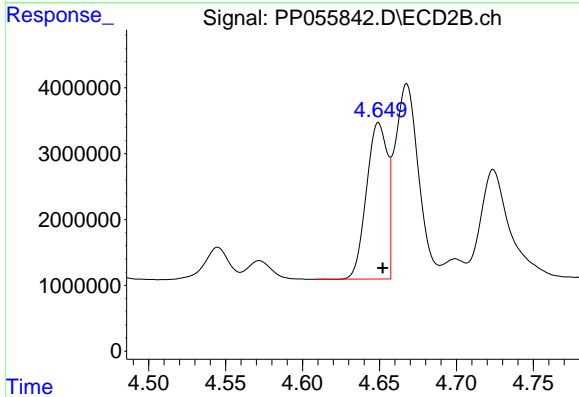
R.T.: 8.571 min
Delta R.T.: -0.006 min
Response: 56065104
Conc: 49.42 ng/ml



#3 AR-1016-1

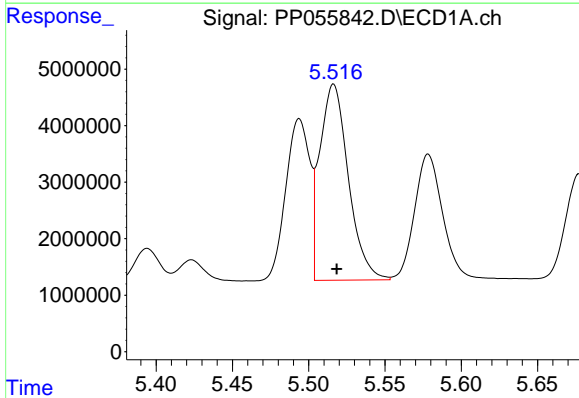
R.T.: 5.494 min
 Delta R.T.: -0.002 min
 Response: 31427105
 Conc: 526.65 ng/ml

Instrument :
 ECD_P
 ClientSampleId :



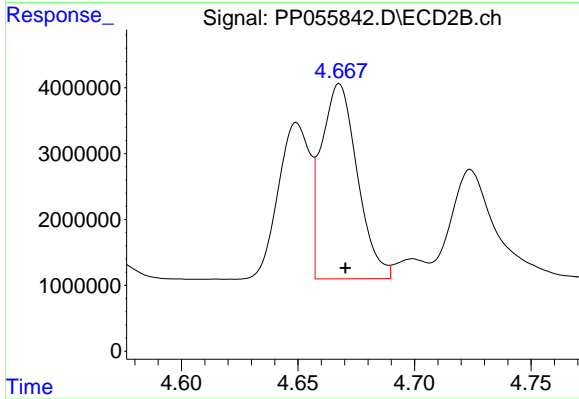
#3 AR-1016-1

R.T.: 4.649 min
 Delta R.T.: -0.003 min
 Response: 22396331
 Conc: 497.36 ng/ml



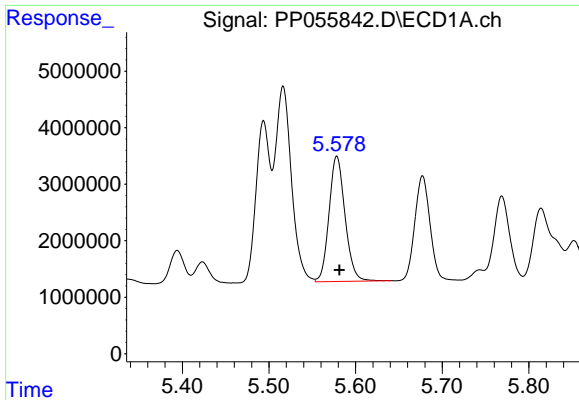
#4 AR-1016-2

R.T.: 5.516 min
 Delta R.T.: -0.002 min
 Response: 45204991
 Conc: 516.69 ng/ml



#4 AR-1016-2

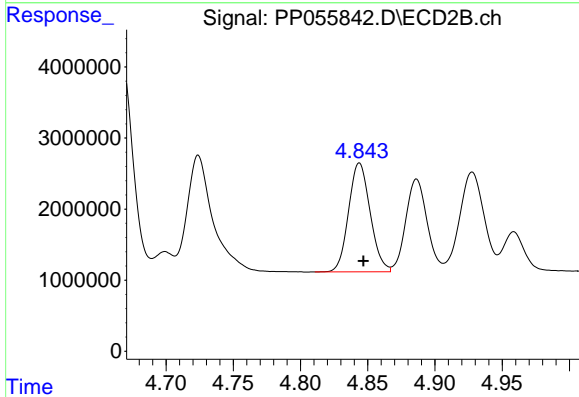
R.T.: 4.668 min
 Delta R.T.: -0.003 min
 Response: 31824647
 Conc: 490.03 ng/ml



#5 AR-1016-3

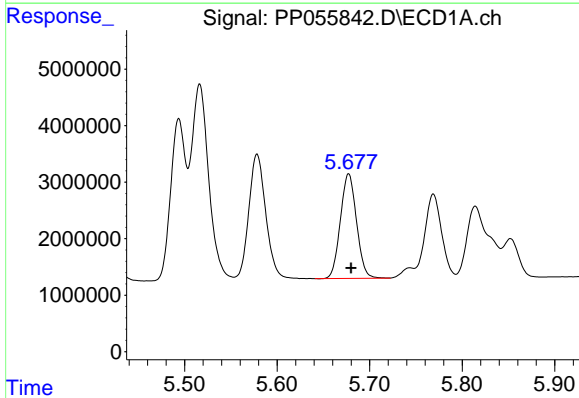
R.T.: 5.578 min
 Delta R.T.: -0.003 min
 Response: 28394270
 Conc: 511.15 ng/ml

Instrument :
 ECD_P
 ClientSampleId :



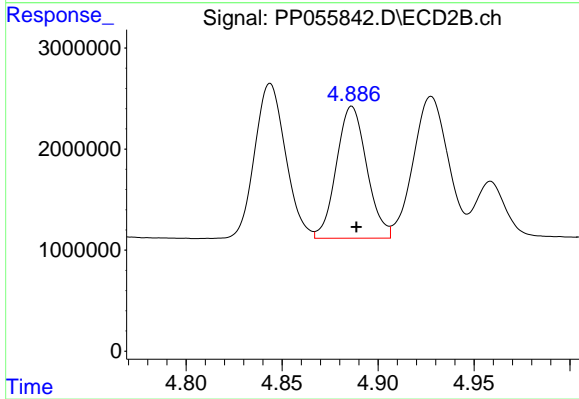
#5 AR-1016-3

R.T.: 4.844 min
 Delta R.T.: -0.003 min
 Response: 17141596
 Conc: 493.24 ng/ml



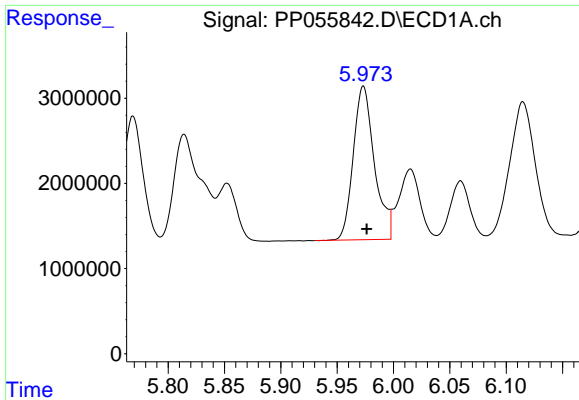
#6 AR-1016-4

R.T.: 5.677 min
 Delta R.T.: -0.003 min
 Response: 22428115
 Conc: 503.31 ng/ml



#6 AR-1016-4

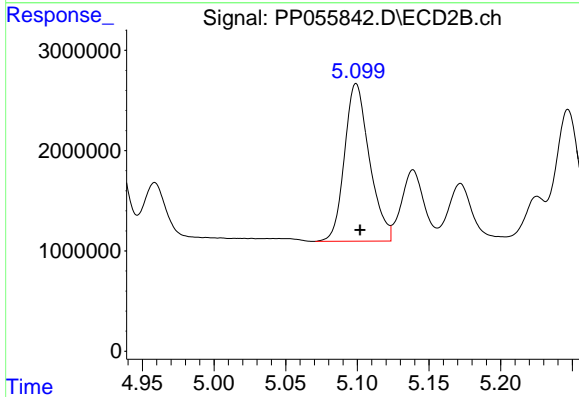
R.T.: 4.886 min
 Delta R.T.: -0.002 min
 Response: 14397852
 Conc: 481.68 ng/ml



#7 AR-1016-5

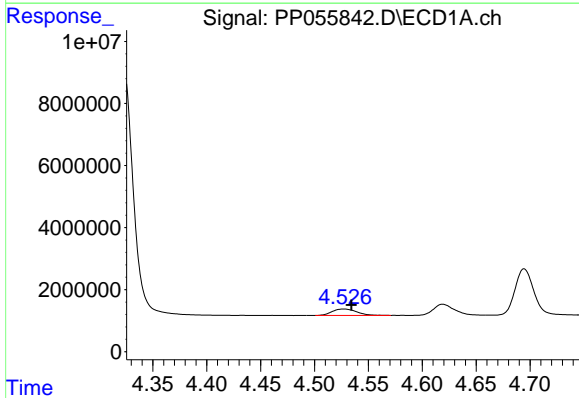
R.T.: 5.973 min
 Delta R.T.: -0.003 min
 Response: 23556150
 Conc: 487.86 ng/ml

Instrument :
 ECD_P
 ClientSampleId :



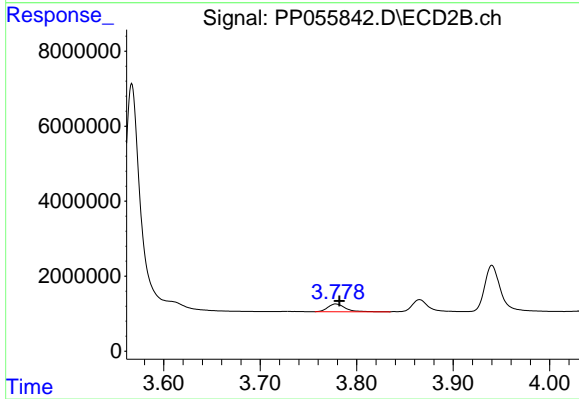
#7 AR-1016-5

R.T.: 5.099 min
 Delta R.T.: -0.003 min
 Response: 19011506
 Conc: 480.90 ng/ml



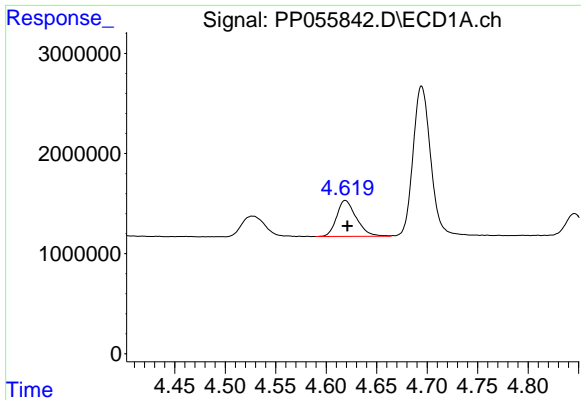
#8 AR-1221-1

R.T.: 4.527 min
 Delta R.T.: -0.007 min
 Response: 3313826
 Conc: 159.21 ng/ml



#8 AR-1221-1

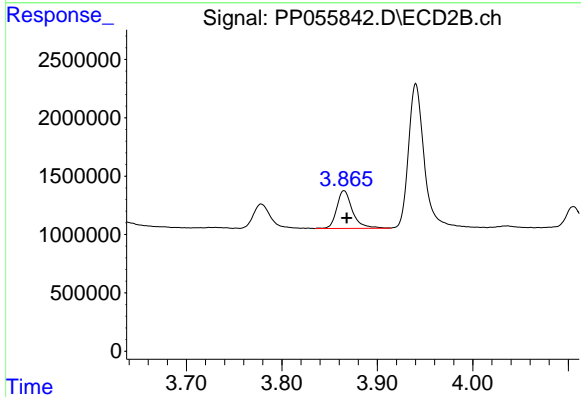
R.T.: 3.778 min
 Delta R.T.: -0.003 min
 Response: 2609740
 Conc: 145.29 ng/ml



#9 AR-1221-2

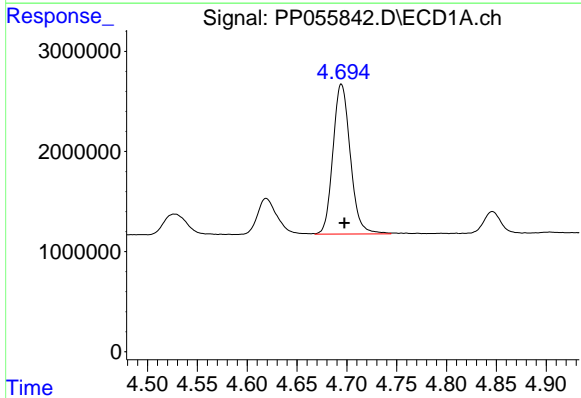
R.T.: 4.619 min
 Delta R.T.: -0.002 min
 Response: 4892079
 Conc: 307.55 ng/ml

Instrument :
 ECD_P
 ClientSampleId :



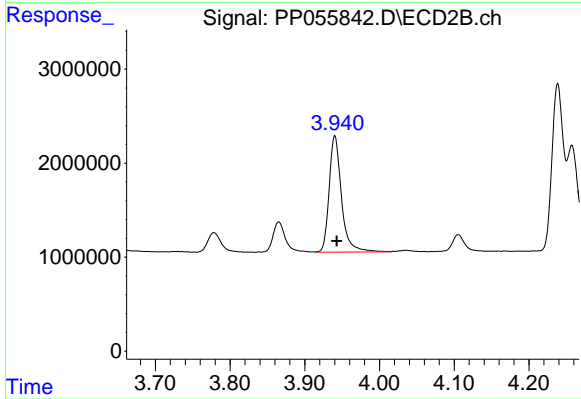
#9 AR-1221-2

R.T.: 3.865 min
 Delta R.T.: -0.003 min
 Response: 3723399
 Conc: 283.51 ng/ml



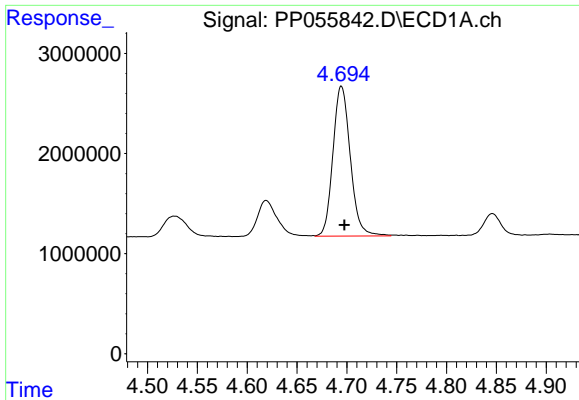
#10 AR-1221-3

R.T.: 4.694 min
 Delta R.T.: -0.003 min
 Response: 18183764
 Conc: 374.83 ng/ml



#10 AR-1221-3

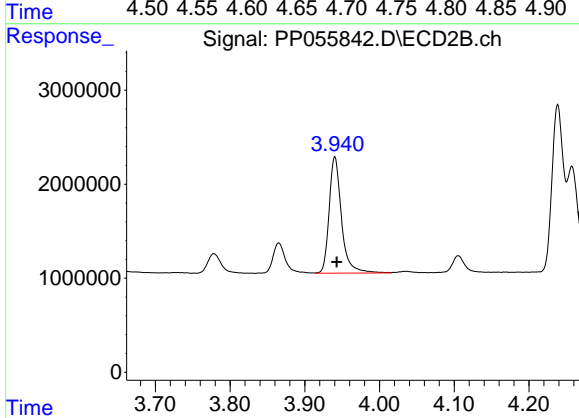
R.T.: 3.940 min
 Delta R.T.: -0.003 min
 Response: 14236312
 Conc: 341.09 ng/ml



#11 AR-1232-1

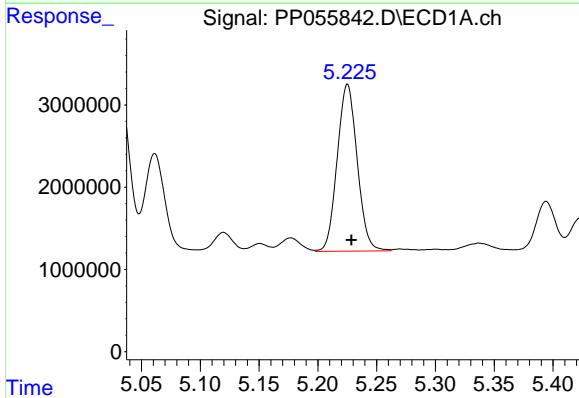
R.T.: 4.694 min
Delta R.T.: -0.003 min
Response: 18183764
Conc: 459.07 ng/ml

Instrument :
ECD_P
ClientSampleId :



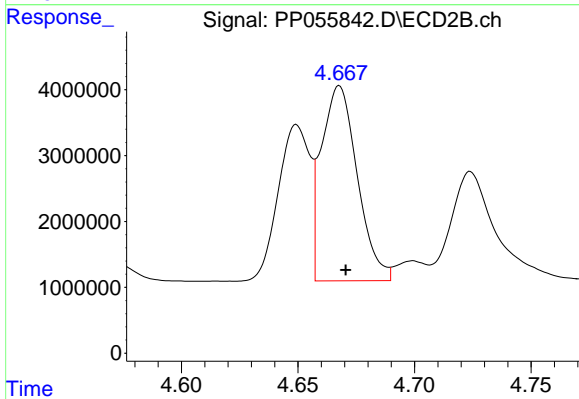
#11 AR-1232-1

R.T.: 3.940 min
Delta R.T.: -0.002 min
Response: 14236312
Conc: 413.54 ng/ml



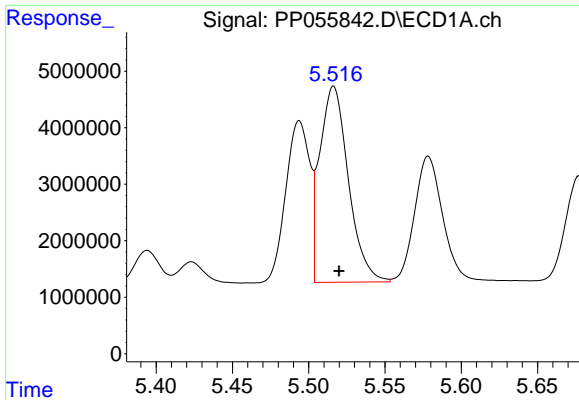
#12 AR-1232-2

R.T.: 5.225 min
Delta R.T.: -0.003 min
Response: 24011789
Conc: 1156.00 ng/ml



#12 AR-1232-2

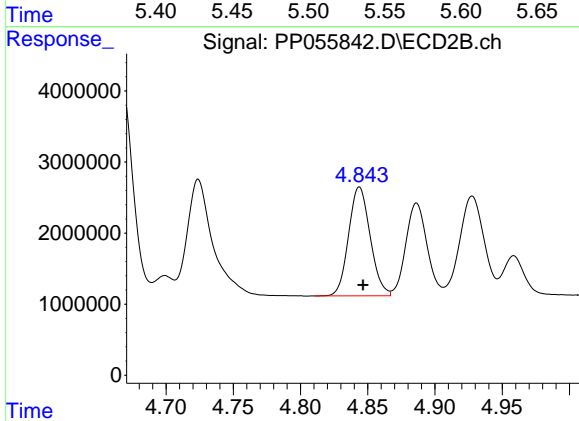
R.T.: 4.668 min
Delta R.T.: -0.003 min
Response: 31824647
Conc: 1084.31 ng/ml



#13 AR-1232-3

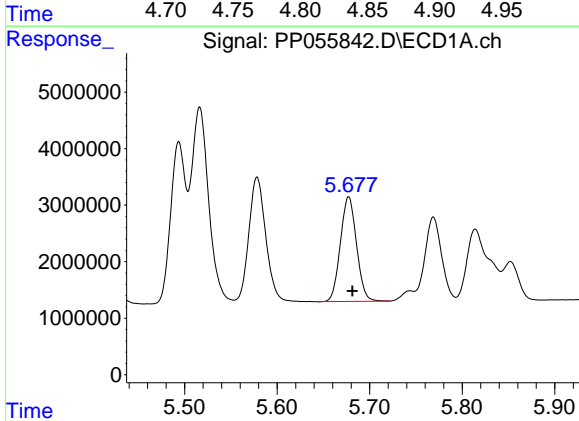
R.T.: 5.516 min
 Delta R.T.: -0.003 min
 Response: 45204991
 Conc: 1147.23 ng/m

Instrument :
 ECD_P
 ClientSampleId :



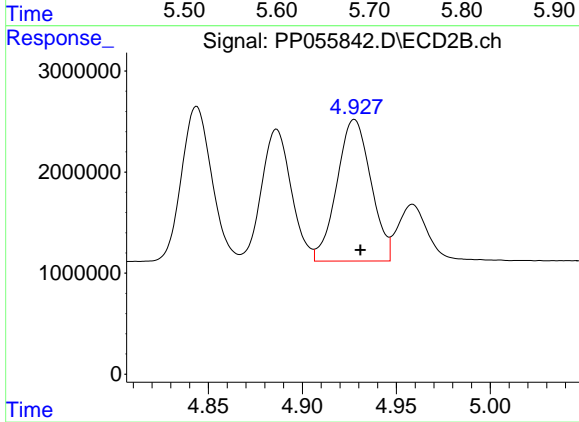
#13 AR-1232-3

R.T.: 4.844 min
 Delta R.T.: -0.003 min
 Response: 17141596
 Conc: 1127.94 ng/ml



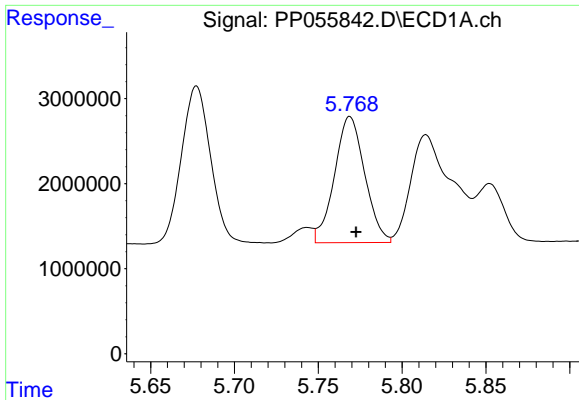
#14 AR-1232-4

R.T.: 5.677 min
 Delta R.T.: -0.004 min
 Response: 22428115
 Conc: 1144.89 ng/ml



#14 AR-1232-4

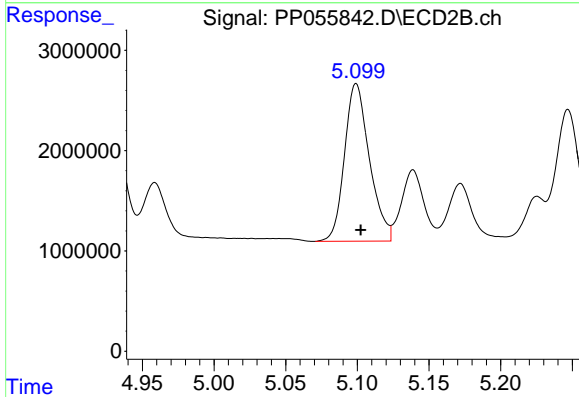
R.T.: 4.928 min
 Delta R.T.: -0.003 min
 Response: 17684568
 Conc: 1166.56 ng/ml



#15 AR-1232-5

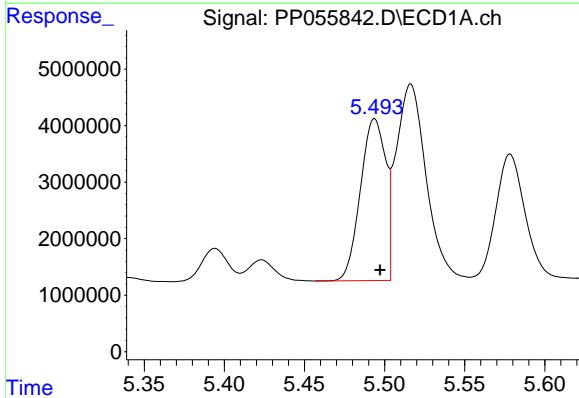
R.T.: 5.769 min
 Delta R.T.: -0.004 min
 Response: 18631561
 Conc: 1164.96 ng/ml

Instrument :
 ECD_P
 ClientSampleId :



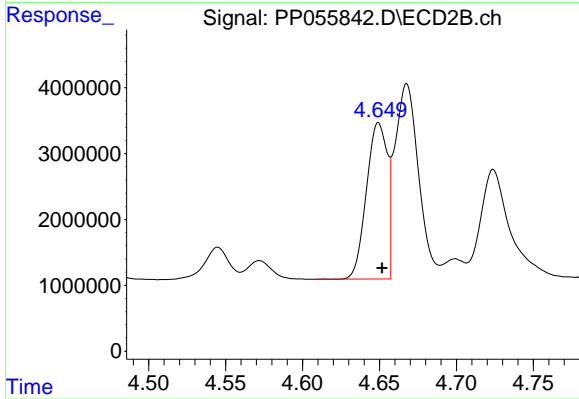
#15 AR-1232-5

R.T.: 5.099 min
 Delta R.T.: -0.003 min
 Response: 19011506
 Conc: 1159.84 ng/ml



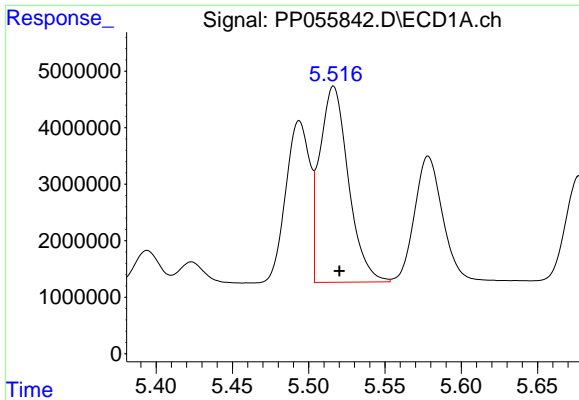
#16 AR-1242-1

R.T.: 5.494 min
 Delta R.T.: -0.003 min
 Response: 31427105
 Conc: 650.85 ng/ml



#16 AR-1242-1

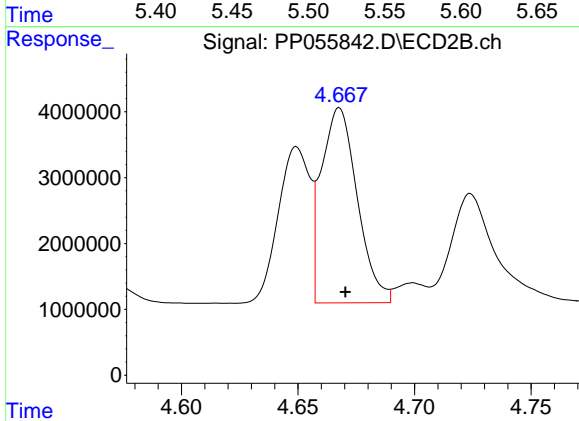
R.T.: 4.649 min
 Delta R.T.: -0.002 min
 Response: 22396331
 Conc: 608.71 ng/ml



#17 AR-1242-2

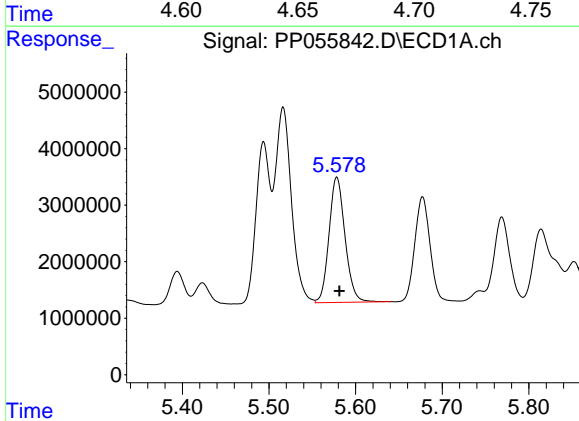
R.T.: 5.516 min
Delta R.T.: -0.004 min
Response: 45204991
Conc: 636.16 ng/ml

Instrument :
ECD_P
ClientSampleId :



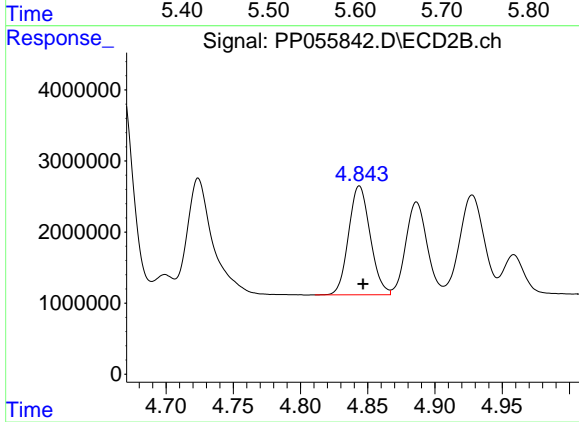
#17 AR-1242-2

R.T.: 4.668 min
Delta R.T.: -0.003 min
Response: 31824647
Conc: 604.21 ng/ml



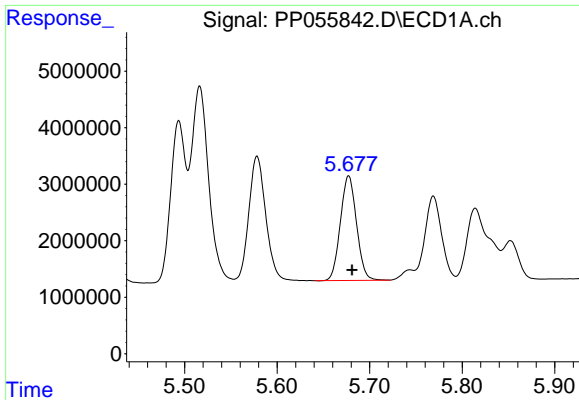
#18 AR-1242-3

R.T.: 5.578 min
Delta R.T.: -0.003 min
Response: 28394270
Conc: 636.44 ng/ml



#18 AR-1242-3

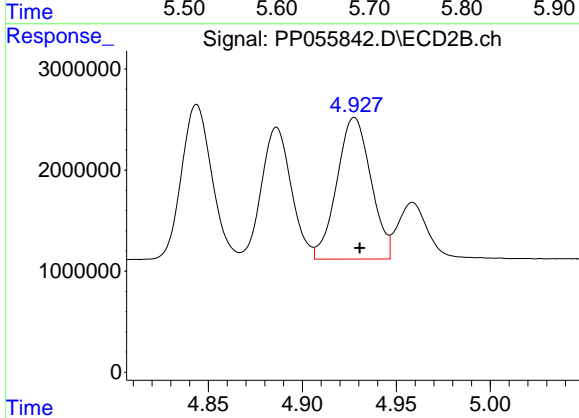
R.T.: 4.844 min
Delta R.T.: -0.003 min
Response: 17141596
Conc: 605.49 ng/ml



#19 AR-1242-4

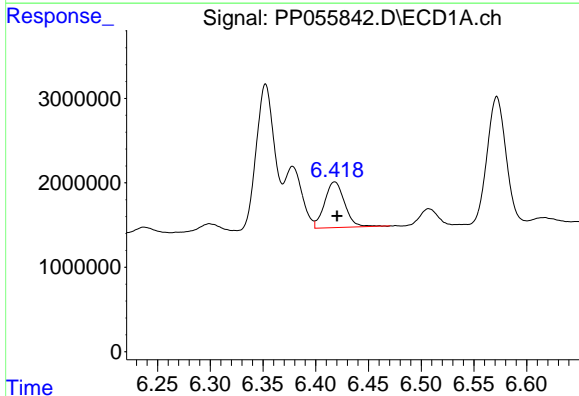
R.T.: 5.677 min
 Delta R.T.: -0.003 min
 Response: 22428115
 Conc: 620.75 ng/ml

Instrument :
 ECD_P
 ClientSampleId :



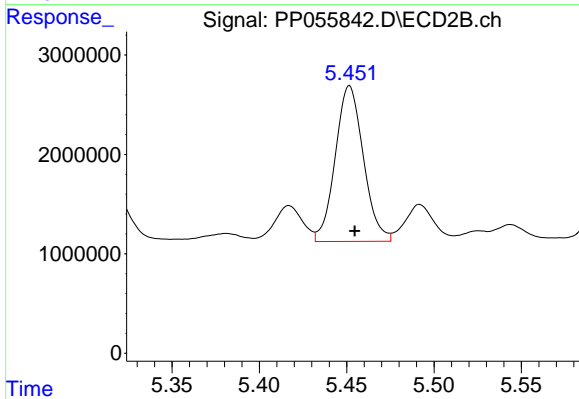
#19 AR-1242-4

R.T.: 4.928 min
 Delta R.T.: -0.003 min
 Response: 17684568
 Conc: 573.19 ng/ml



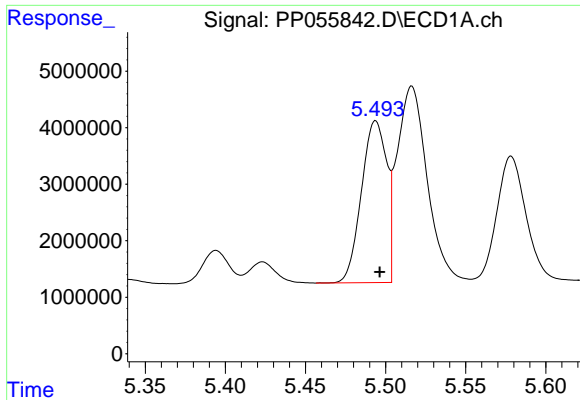
#20 AR-1242-5

R.T.: 6.418 min
 Delta R.T.: -0.002 min
 Response: 7146607
 Conc: 170.61 ng/ml



#20 AR-1242-5

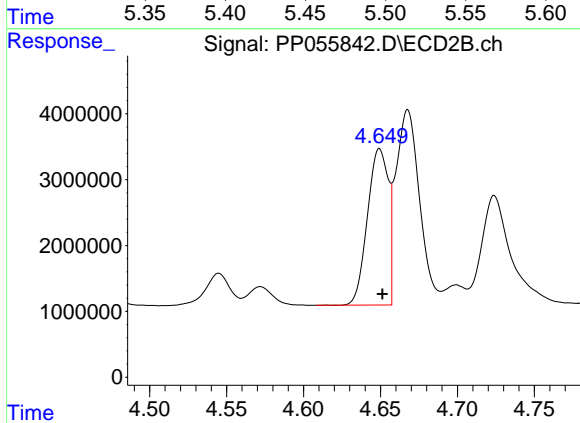
R.T.: 5.452 min
 Delta R.T.: -0.003 min
 Response: 17571785
 Conc: 527.53 ng/ml



#21 AR-1248-1

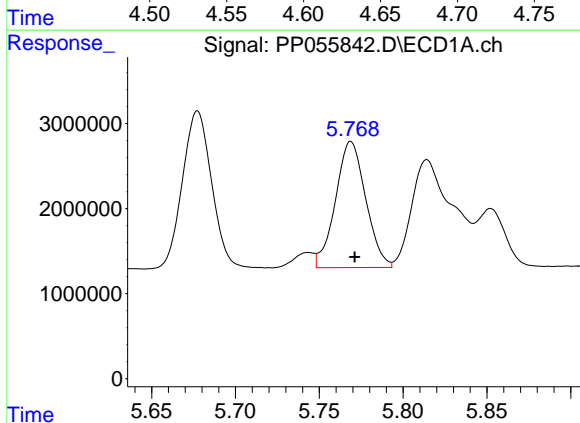
R.T.: 5.494 min
 Delta R.T.: -0.003 min
 Response: 31427105
 Conc: 863.78 ng/ml

Instrument :
 ECD_P
 ClientSampleId :



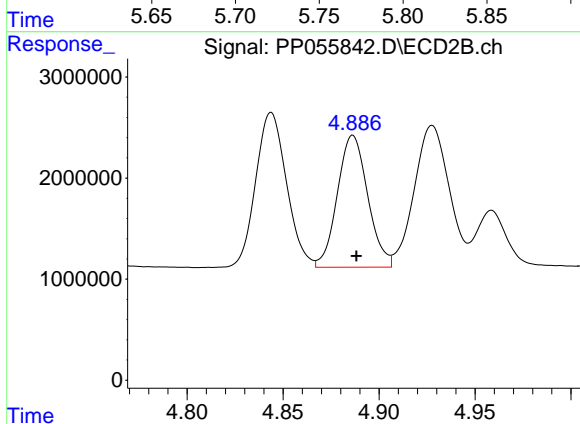
#21 AR-1248-1

R.T.: 4.649 min
 Delta R.T.: -0.002 min
 Response: 22396331
 Conc: 801.93 ng/ml



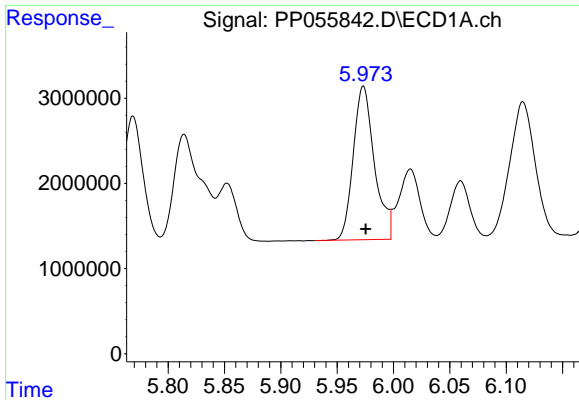
#22 AR-1248-2

R.T.: 5.769 min
 Delta R.T.: -0.002 min
 Response: 18631561
 Conc: 323.81 ng/ml



#22 AR-1248-2

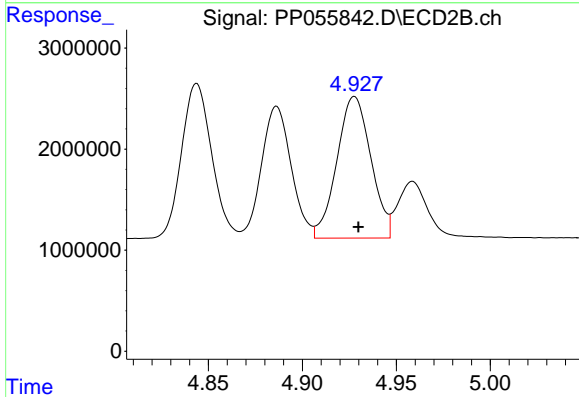
R.T.: 4.886 min
 Delta R.T.: -0.002 min
 Response: 14397852
 Conc: 338.45 ng/ml



#23 AR-1248-3

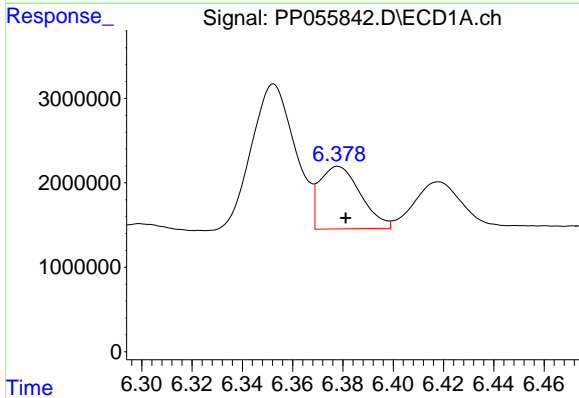
R.T.: 5.973 min
 Delta R.T.: -0.002 min
 Response: 23556150
 Conc: 362.52 ng/ml

Instrument :
 ECD_P
 ClientSampleId :



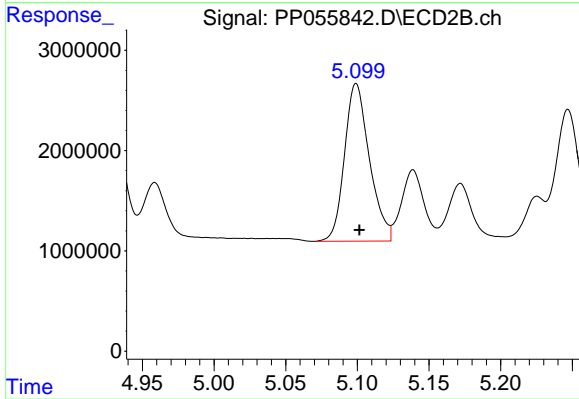
#23 AR-1248-3

R.T.: 4.928 min
 Delta R.T.: -0.002 min
 Response: 17684568
 Conc: 397.39 ng/ml



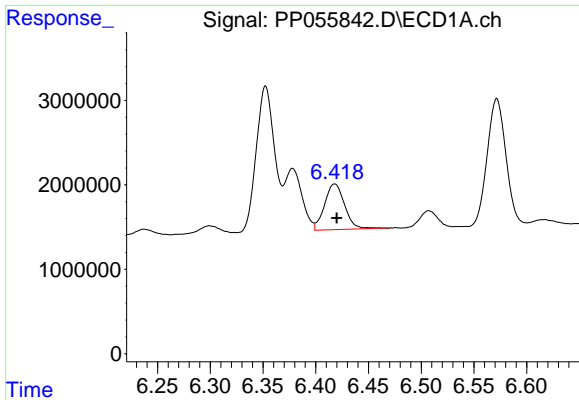
#24 AR-1248-4

R.T.: 6.378 min
 Delta R.T.: -0.003 min
 Response: 8373340
 Conc: 115.41 ng/ml



#24 AR-1248-4

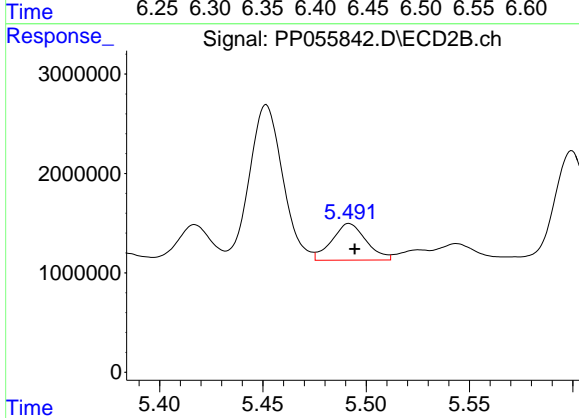
R.T.: 5.099 min
 Delta R.T.: -0.002 min
 Response: 19011506
 Conc: 371.31 ng/ml



#25 AR-1248-5

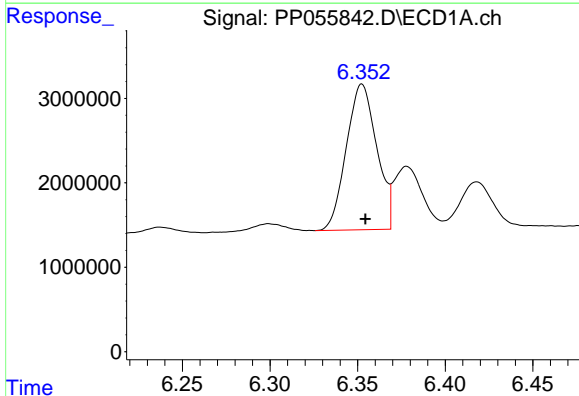
R.T.: 6.418 min
 Delta R.T.: -0.002 min
 Response: 7146607
 Conc: 100.83 ng/ml

Instrument :
 ECD_P
 ClientSampleId :



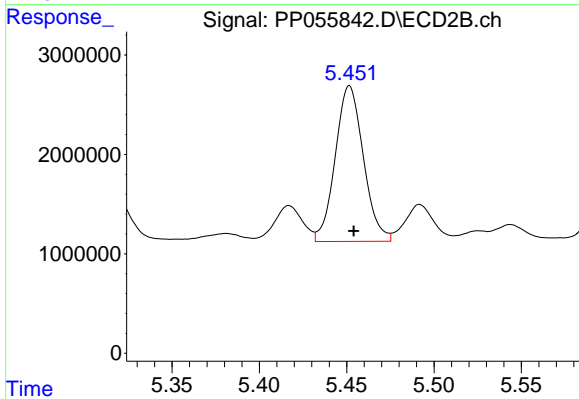
#25 AR-1248-5

R.T.: 5.492 min
 Delta R.T.: -0.003 min
 Response: 4277395
 Conc: 97.05 ng/ml



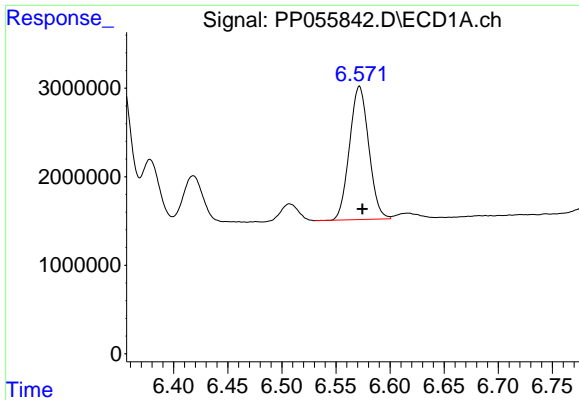
#26 AR-1254-1

R.T.: 6.352 min
 Delta R.T.: -0.002 min
 Response: 20836993
 Conc: 283.41 ng/ml



#26 AR-1254-1

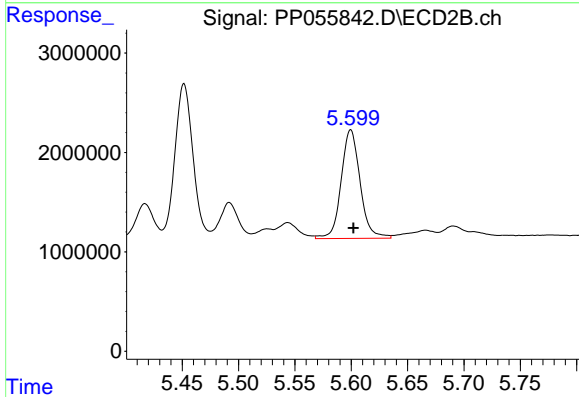
R.T.: 5.452 min
 Delta R.T.: -0.002 min
 Response: 17571785
 Conc: 238.84 ng/ml



#27 AR-1254-2

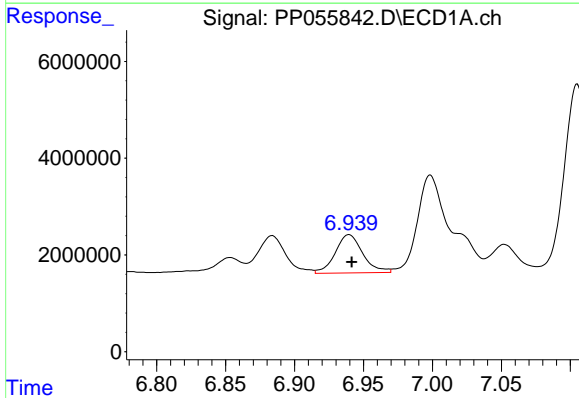
R.T.: 6.572 min
 Delta R.T.: -0.003 min
 Response: 18663564
 Conc: 161.72 ng/ml

Instrument :
 ECD_P
 ClientSampleId :



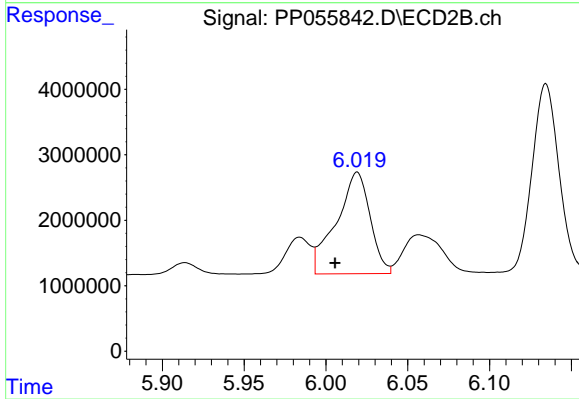
#27 AR-1254-2

R.T.: 5.600 min
 Delta R.T.: -0.002 min
 Response: 12789305
 Conc: 203.27 ng/ml



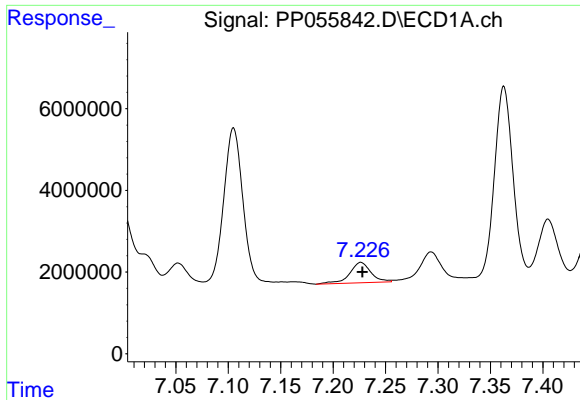
#28 AR-1254-3

R.T.: 6.939 min
 Delta R.T.: -0.002 min
 Response: 11006689
 Conc: 89.44 ng/ml



#28 AR-1254-3

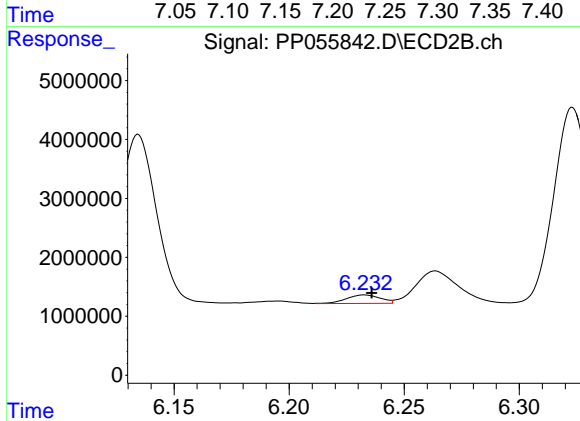
R.T.: 6.019 min
 Delta R.T.: 0.013 min
 Response: 22297486
 Conc: 227.35 ng/ml



#29 AR-1254-4

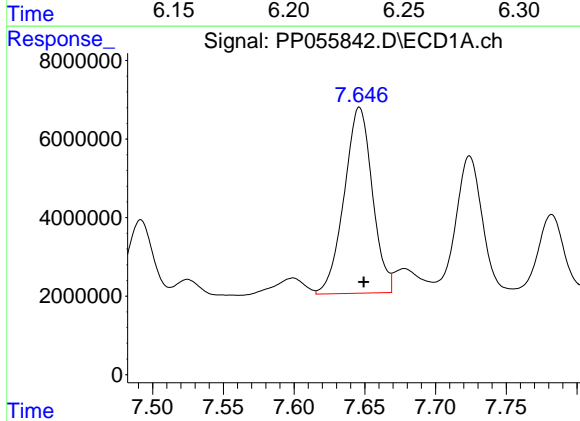
R.T.: 7.226 min
 Delta R.T.: -0.002 min
 Response: 7067962
 Conc: 76.95 ng/ml

Instrument :
 ECD_P
 ClientSampleId :



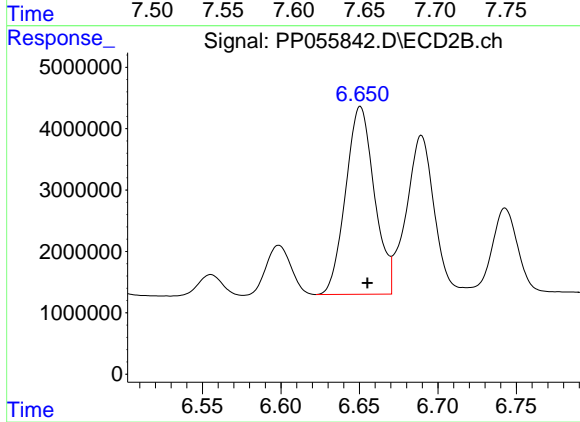
#29 AR-1254-4

R.T.: 6.233 min
 Delta R.T.: -0.003 min
 Response: 1475673
 Conc: 26.81 ng/ml



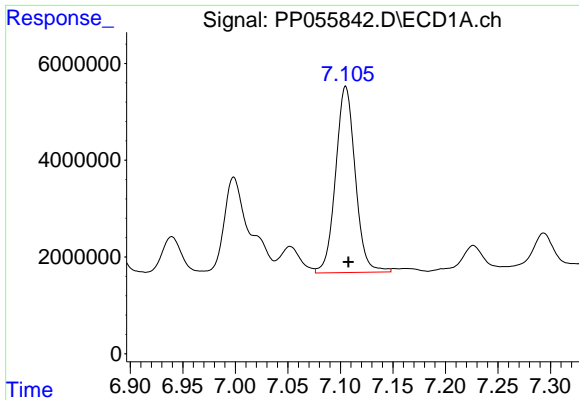
#30 AR-1254-5

R.T.: 7.646 min
 Delta R.T.: -0.003 min
 Response: 65622988
 Conc: 624.37 ng/ml



#30 AR-1254-5

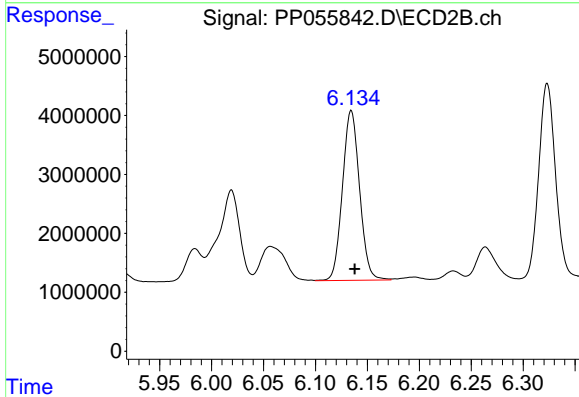
R.T.: 6.651 min
 Delta R.T.: -0.005 min
 Response: 38961816
 Conc: 479.54 ng/ml



#31 AR-1260-1

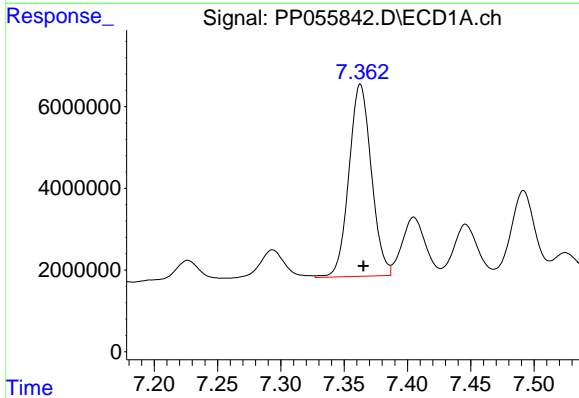
R.T.: 7.105 min
 Delta R.T.: -0.003 min
 Response: 50053347
 Conc: 483.40 ng/ml

Instrument :
 ECD_P
 ClientSampleId :



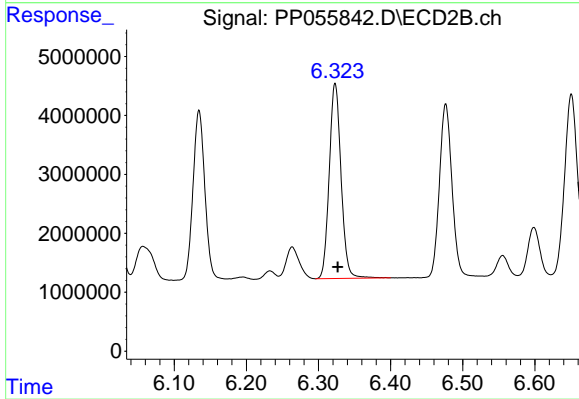
#31 AR-1260-1

R.T.: 6.134 min
 Delta R.T.: -0.003 min
 Response: 33076901
 Conc: 453.72 ng/ml



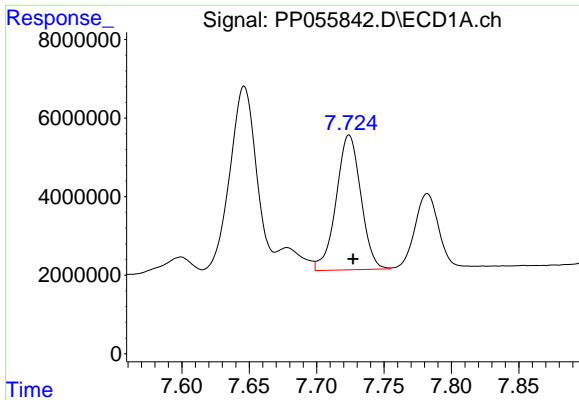
#32 AR-1260-2

R.T.: 7.363 min
 Delta R.T.: -0.002 min
 Response: 57914672
 Conc: 460.47 ng/ml



#32 AR-1260-2

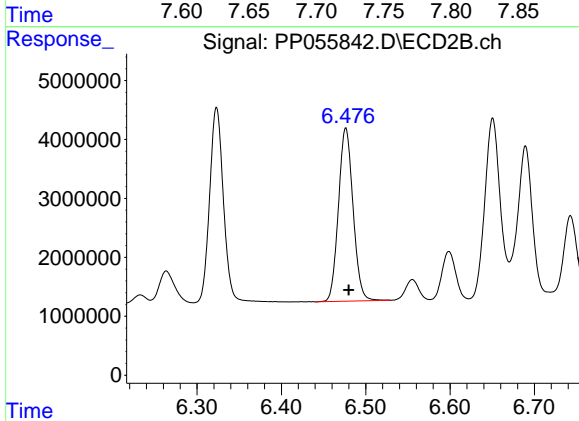
R.T.: 6.323 min
 Delta R.T.: -0.004 min
 Response: 37722176
 Conc: 462.29 ng/ml



#33 AR-1260-3

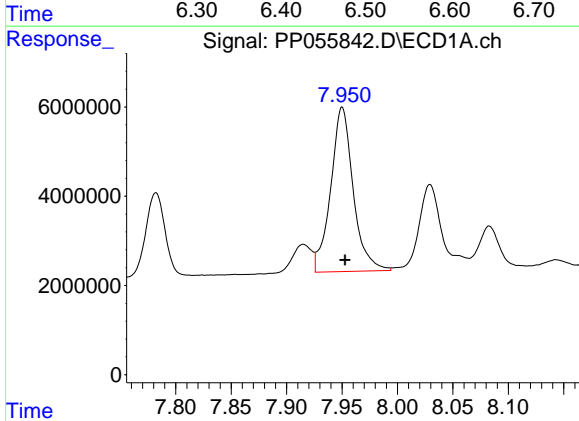
R.T.: 7.724 min
 Delta R.T.: -0.003 min
 Response: 43769163
 Conc: 498.36 ng/ml

Instrument :
 ECD_P
 ClientSampleId :



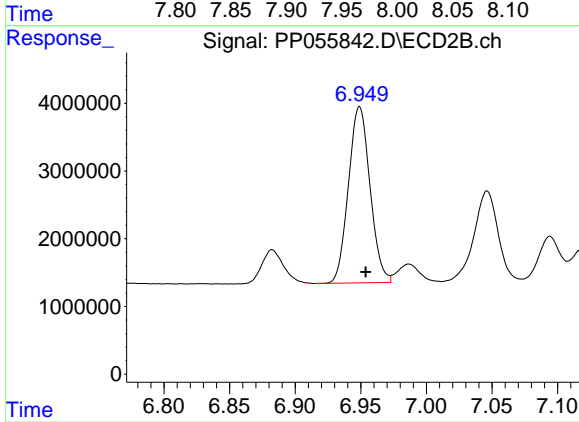
#33 AR-1260-3

R.T.: 6.476 min
 Delta R.T.: -0.004 min
 Response: 35357141
 Conc: 418.40 ng/ml



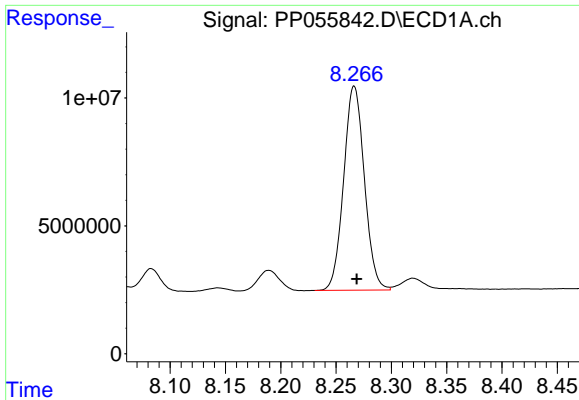
#34 AR-1260-4

R.T.: 7.950 min
 Delta R.T.: -0.003 min
 Response: 52046398
 Conc: 484.27 ng/ml



#34 AR-1260-4

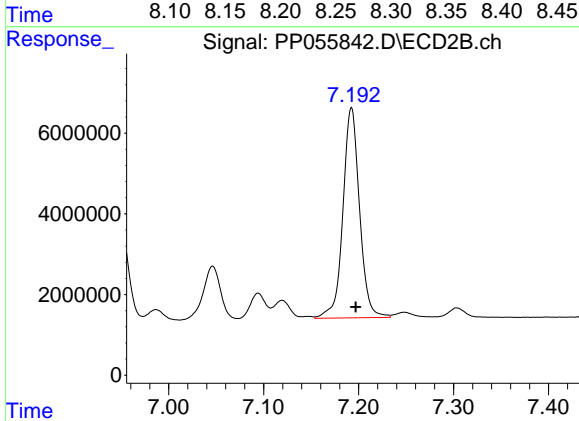
R.T.: 6.949 min
 Delta R.T.: -0.005 min
 Response: 29800833
 Conc: 465.63 ng/ml



#35 AR-1260-5

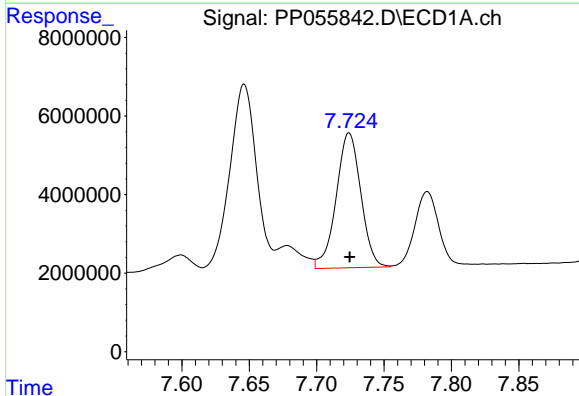
R.T.: 8.266 min
 Delta R.T.: -0.002 min
 Response: 104116655
 Conc: 504.32 ng/ml

Instrument :
 ECD_P
 ClientSampleId :



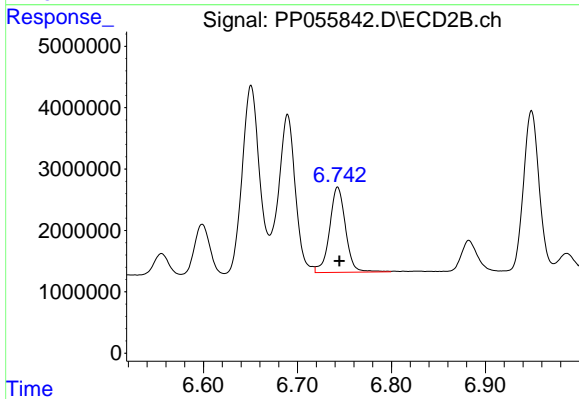
#35 AR-1260-5

R.T.: 7.192 min
 Delta R.T.: -0.004 min
 Response: 63446562
 Conc: 468.73 ng/ml



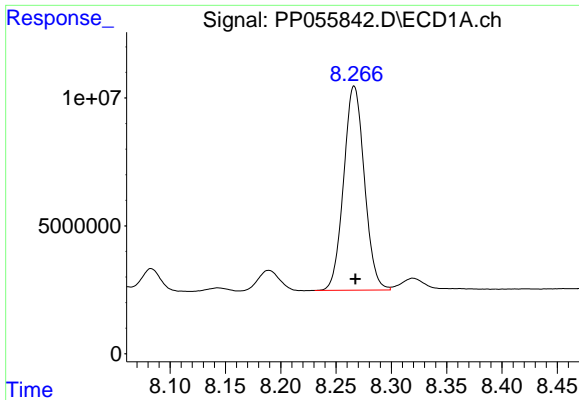
#36 AR-1262-1

R.T.: 7.724 min
 Delta R.T.: 0.000 min
 Response: 43769163
 Conc: 370.98 ng/ml



#36 AR-1262-1

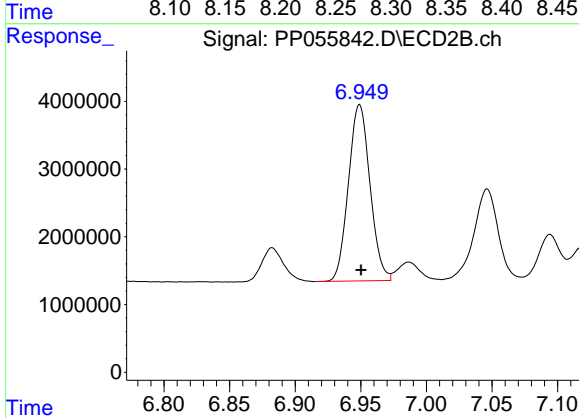
R.T.: 6.743 min
 Delta R.T.: -0.002 min
 Response: 16351264
 Conc: 463.89 ng/ml



#37 AR-1262-2

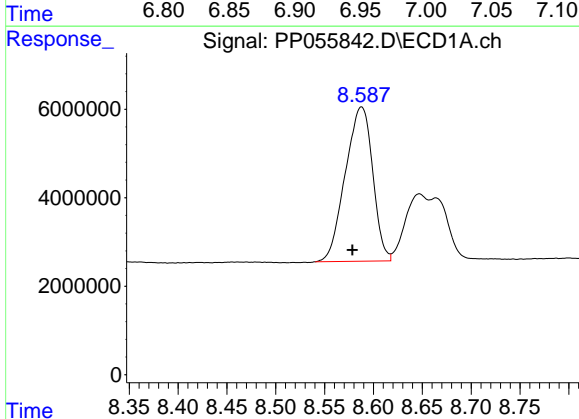
R.T.: 8.266 min
 Delta R.T.: -0.001 min
 Response: 104116655
 Conc: 474.39 ng/ml

Instrument :
 ECD_P
 ClientSampleId :



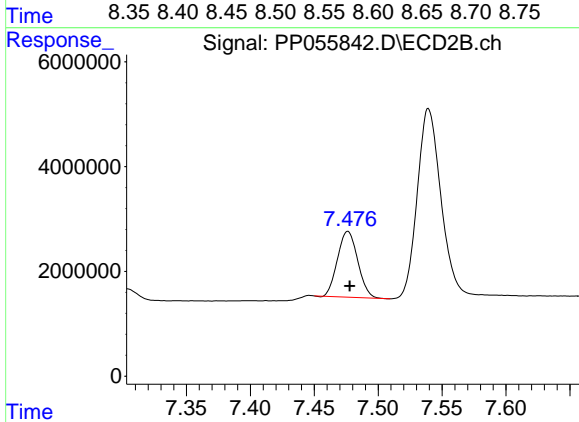
#37 AR-1262-2

R.T.: 6.949 min
 Delta R.T.: -0.001 min
 Response: 29800833
 Conc: 401.34 ng/ml



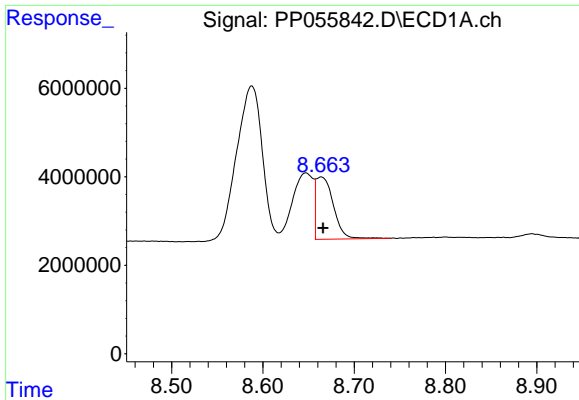
#38 AR-1262-3

R.T.: 8.588 min
 Delta R.T.: 0.009 min
 Response: 68041739
 Conc: 445.07 ng/ml



#38 AR-1262-3

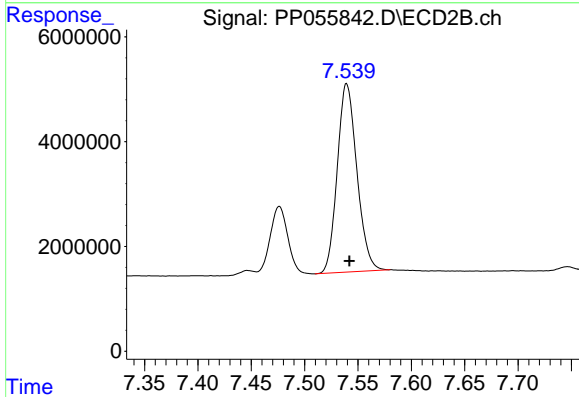
R.T.: 7.476 min
 Delta R.T.: -0.001 min
 Response: 13838658
 Conc: 249.42 ng/ml



#39 AR-1262-4

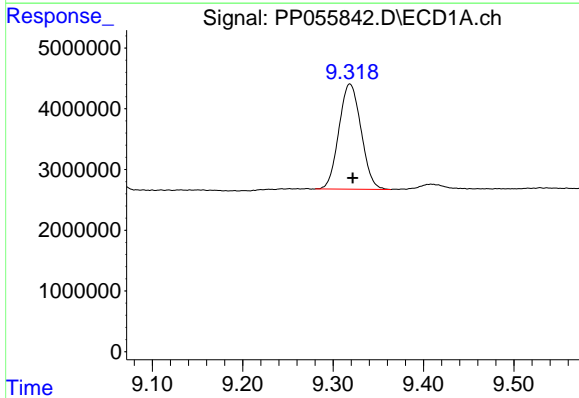
R.T.: 8.664 min
Delta R.T.: -0.002 min
Response: 18718640
Conc: 248.64 ng/ml

Instrument :
ECD_P
ClientSampleId :



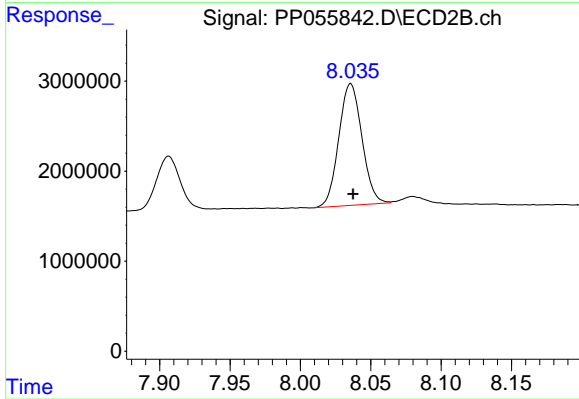
#39 AR-1262-4

R.T.: 7.539 min
Delta R.T.: -0.003 min
Response: 45951535
Conc: 452.65 ng/ml



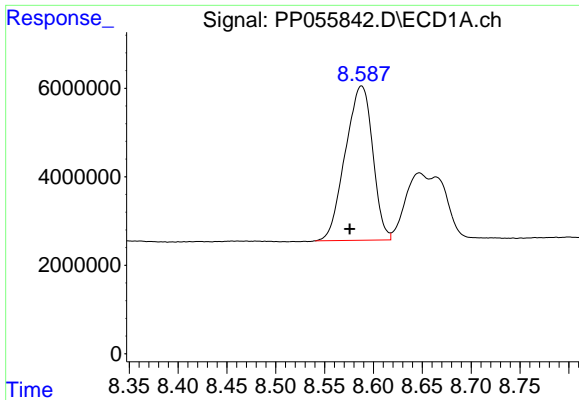
#40 AR-1262-5

R.T.: 9.319 min
Delta R.T.: -0.003 min
Response: 29505655
Conc: 357.88 ng/ml



#40 AR-1262-5

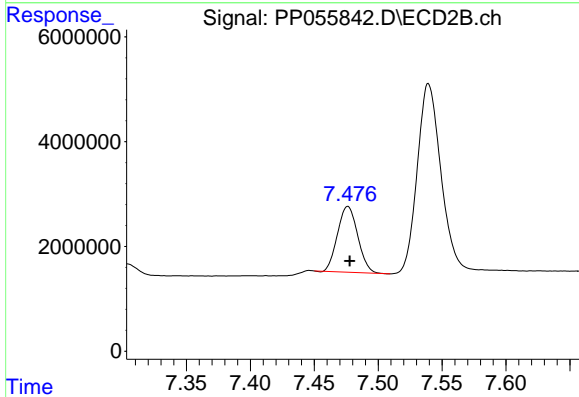
R.T.: 8.036 min
Delta R.T.: -0.002 min
Response: 15501354
Conc: 340.86 ng/ml



#41 AR-1268-1

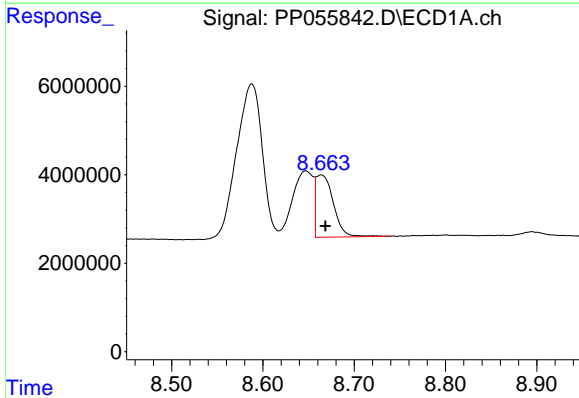
R.T.: 8.588 min
 Delta R.T.: 0.012 min
 Response: 68041739
 Conc: 238.41 ng/ml

Instrument :
 ECD_P
 ClientSampleId :



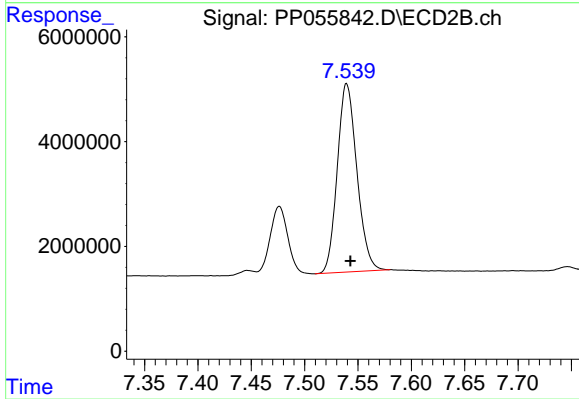
#41 AR-1268-1

R.T.: 7.476 min
 Delta R.T.: -0.001 min
 Response: 13838658
 Conc: 82.31 ng/ml



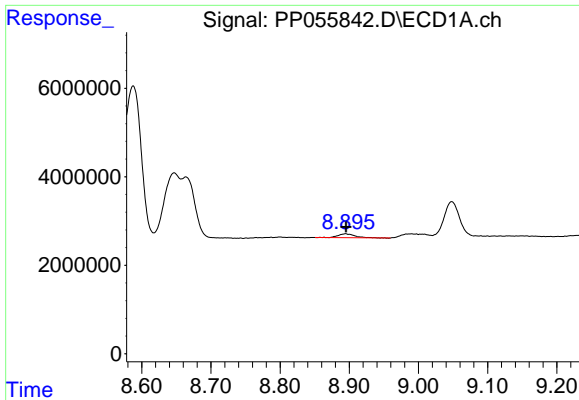
#42 AR-1268-2

R.T.: 8.664 min
 Delta R.T.: -0.005 min
 Response: 18718640
 Conc: 70.20 ng/ml



#42 AR-1268-2

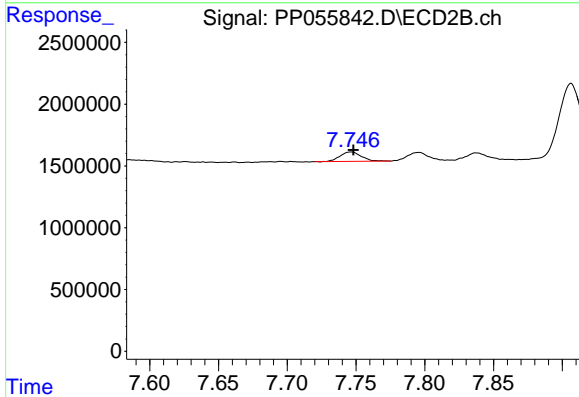
R.T.: 7.539 min
 Delta R.T.: -0.003 min
 Response: 45951535
 Conc: 300.41 ng/ml



#43 AR-1268-3

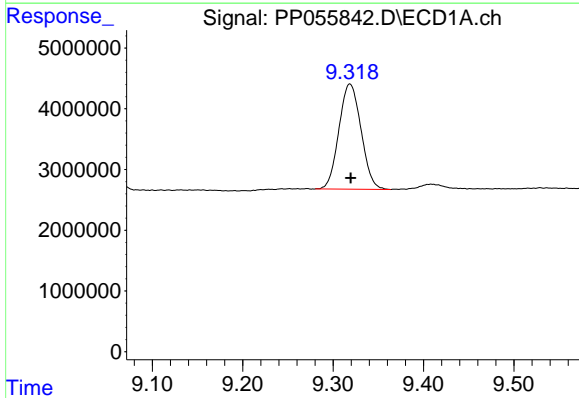
R.T.: 8.895 min
 Delta R.T.: 0.000 min
 Response: 1408355
 Conc: 5.98 ng/ml

Instrument :
 ECD_P
 ClientSampleId :



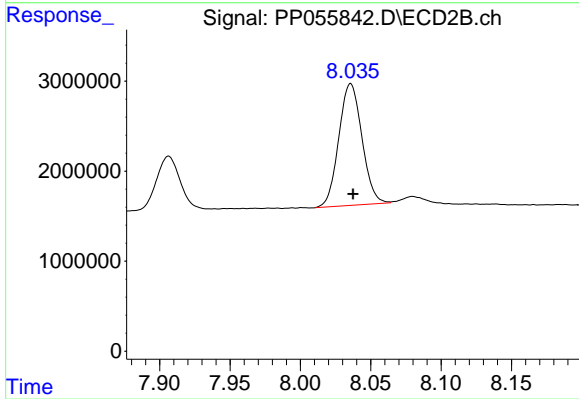
#43 AR-1268-3

R.T.: 7.746 min
 Delta R.T.: -0.002 min
 Response: 809128
 Conc: 5.90 ng/ml



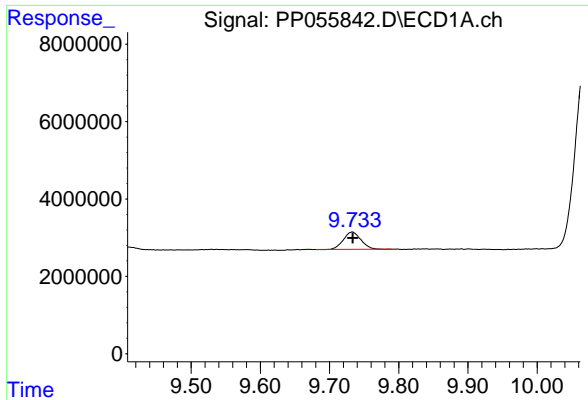
#44 AR-1268-4

R.T.: 9.319 min
 Delta R.T.: 0.000 min
 Response: 29505655
 Conc: 298.85 ng/ml



#44 AR-1268-4

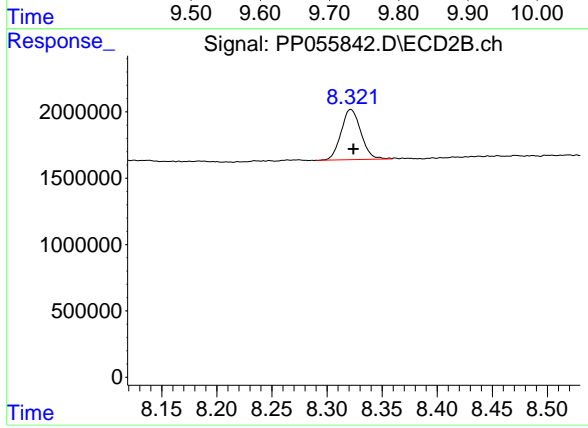
R.T.: 8.036 min
 Delta R.T.: -0.002 min
 Response: 15501354
 Conc: 281.75 ng/ml



#45 AR-1268-5

R.T.: 9.733 min
Delta R.T.: 0.000 min
Response: 7847272
Conc: 10.42 ng/ml

Instrument :
ECD_P
ClientSampleId :



#45 AR-1268-5

R.T.: 8.322 min
Delta R.T.: -0.002 min
Response: 4722611
Conc: 11.71 ng/ml