

Data Path : Z:\pestpcbsrv\HPCHEM1\ECD_P\Data\PP022223\
 Data File : PP055830.D
 Signal(s) : Signal #1: ECD1A.ch Signal #2: ECD2B.ch
 Acq On : 22 Feb 2023 09:39
 Operator : YP\AJ
 Sample : AR1254CCC500
 Misc :
 ALS Vial : 6 Sample Multiplier: 1

Instrument :
 ECD_P
ClientSampleId :
 AR1254CCC500

Integration File signal 1: autoint1.e
 Integration File signal 2: autoint2.e
 Quant Time: Feb 22 20:12:13 2023
 Quant Method : Z:\pestpcbsrv\HPCHEM1\ECD_P\methods\PP021723.M
 Quant Title : GC EXTRACTABLES
 QLast Update : Mon Feb 20 05:24:03 2023
 Response via : Initial Calibration
 Integrator: ChemStation

Volume Inj. : 2 µl
 Signal #1 Phase : ZB-MR2 Signal #2 Phase: ZB-MR2
 Signal #1 Info : 30Mx0.32mmx 0.50µ Signal #2 Info : 30M x 0.32mm x 0.25µm

Compound	RT#1	RT#2	Resp#1	Resp#2	ng/ml	ng/ml

System Monitoring Compounds						
1) SA Tetrachlo...	4.323	3.566	89956250	73813152	55.830	50.551
2) SA Decachlor...	10.070	8.571	109.6E6	64117901	53.733	56.517
Target Compounds						
26) L6 AR-1254-1	6.353	5.451	39107965	37998874	531.922	516.484
27) L6 AR-1254-2	6.572	5.599	61755664	32967144	535.124	523.979
28) L6 AR-1254-3	6.939	6.004	67362784	51630868	547.358	526.430
29) L6 AR-1254-4	7.226	6.233	50275920	29037275	547.369	527.506
30) L6 AR-1254-5	7.647	6.652	55753491	43883448	530.465	540.111

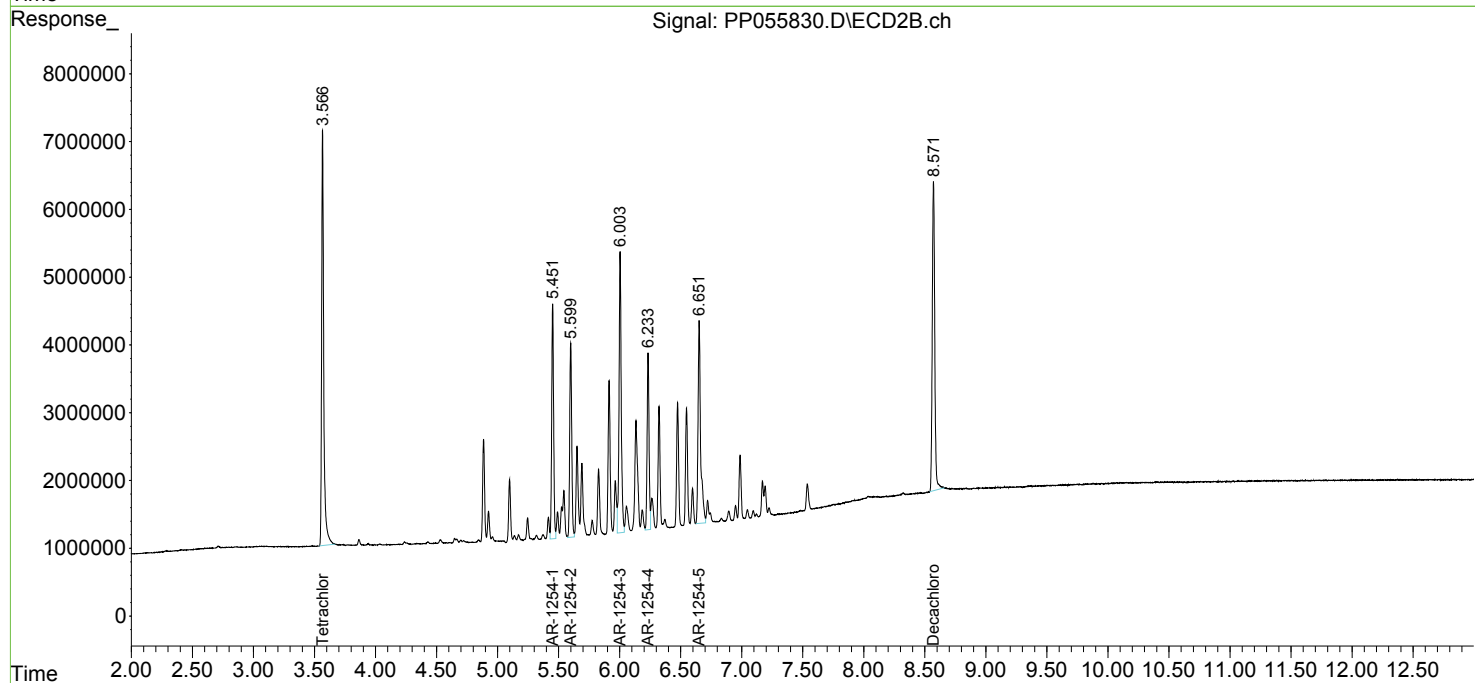
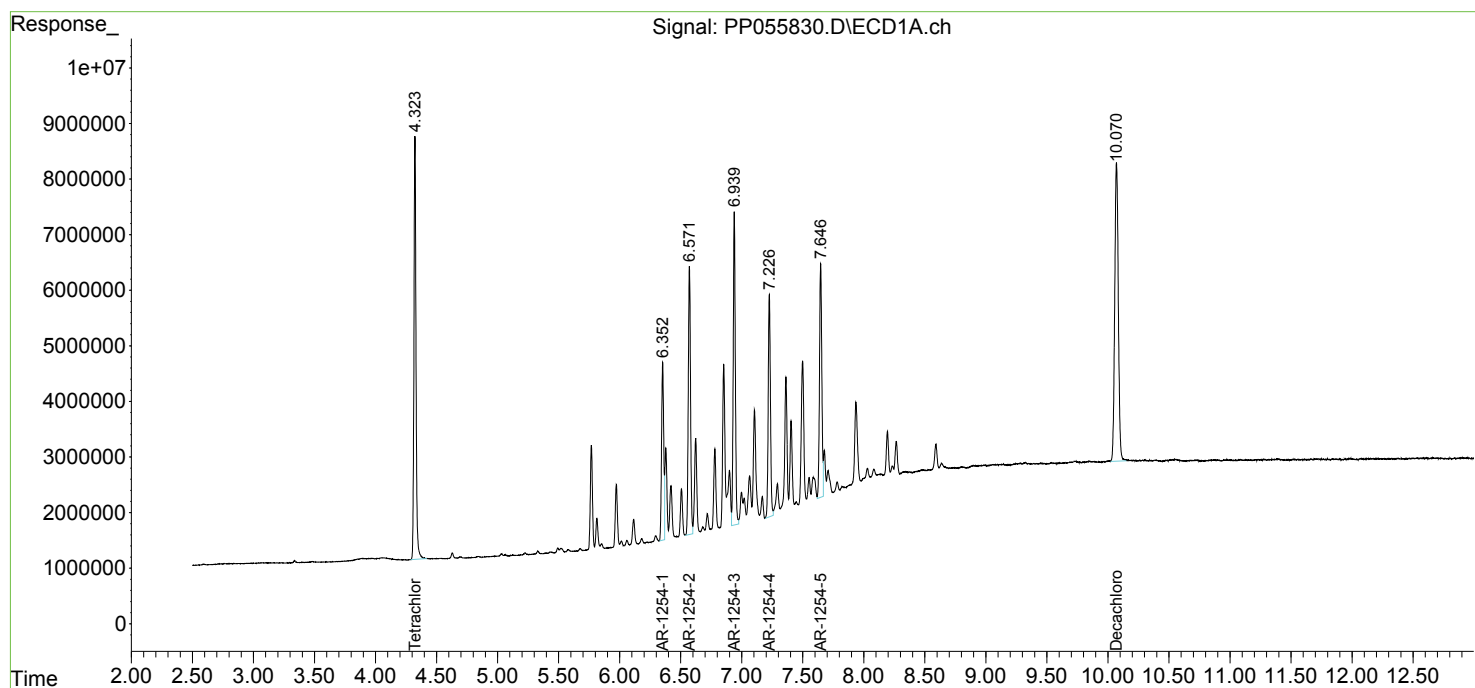
(f)=RT Delta > 1/2 Window (#)=Amounts differ by > 25% (m)=manual int.

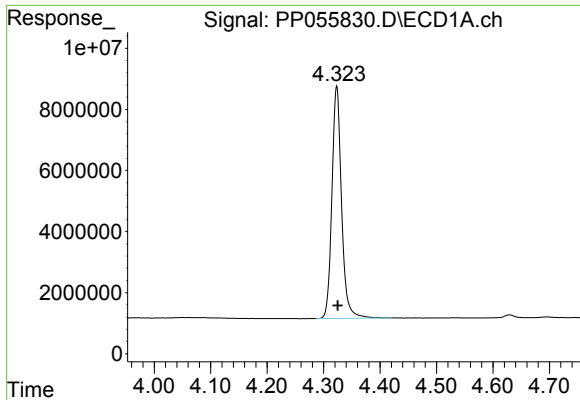
Data Path : Z:\pestpcbsrv\HPCHEM1\ECD_P\Data\PP022223\
 Data File : PP055830.D
 Signal(s) : Signal #1: ECD1A.ch Signal #2: ECD2B.ch
 Acq On : 22 Feb 2023 09:39
 Operator : YP\AJ
 Sample : AR1254CCC500
 Misc :
 ALS Vial : 6 Sample Multiplier: 1

Instrument :
 ECD_P
 ClientSampleId :
 AR1254CCC500

Integration File signal 1: autoint1.e
 Integration File signal 2: autoint2.e
 Quant Time: Feb 22 20:12:13 2023
 Quant Method : Z:\pestpcbsrv\HPCHEM1\ECD_P\methods\PP021723.M
 Quant Title : GC EXTRACTABLES
 QLast Update : Mon Feb 20 05:24:03 2023
 Response via : Initial Calibration
 Integrator: ChemStation

Volume Inj. : 2 µl
 Signal #1 Phase : ZB-MR1 Signal #2 Phase: ZB-MR2
 Signal #1 Info : 30Mx0.32mmx 0.50µ Signal #2 Info : 30M x 0.32mm x 0.25µm

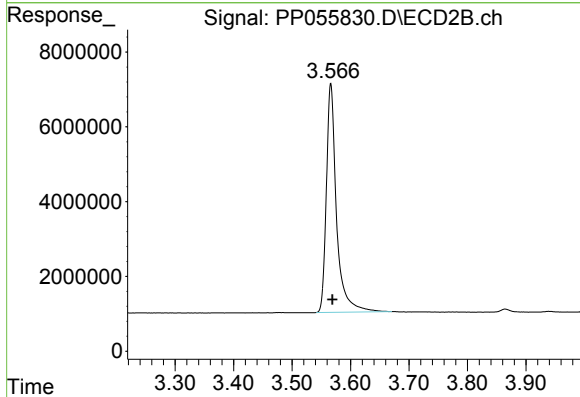




#1 Tetrachloro-m-xylene

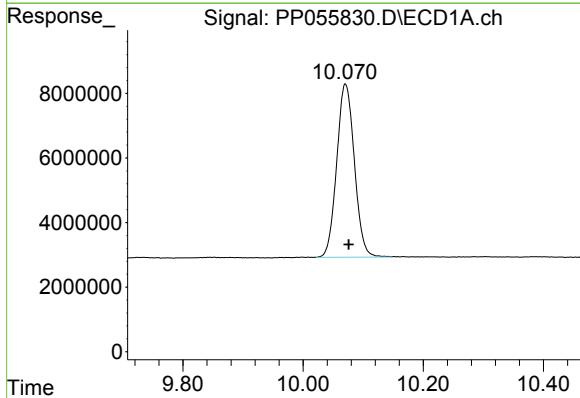
R.T.: 4.323 min
Delta R.T.: -0.002 min
Response: 89956250
Conc: 55.83 ng/ml

Instrument :
ECD_P
ClientSampleId :
AR1254CCC500



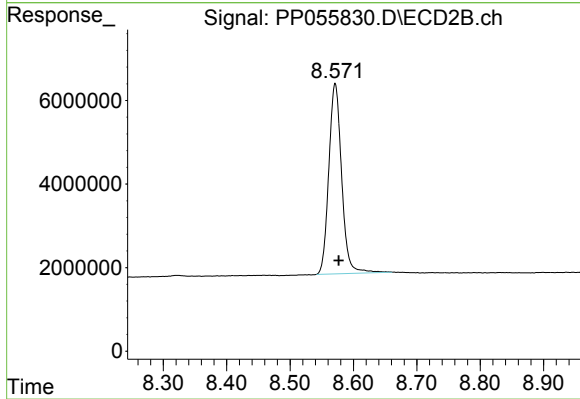
#1 Tetrachloro-m-xylene

R.T.: 3.566 min
Delta R.T.: -0.002 min
Response: 73813152
Conc: 50.55 ng/ml



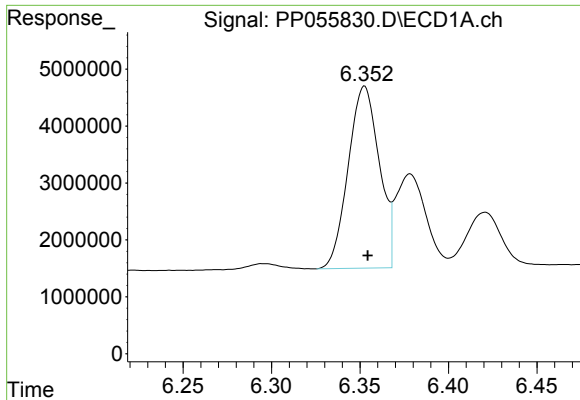
#2 Decachlorobiphenyl

R.T.: 10.070 min
Delta R.T.: -0.006 min
Response: 109612700
Conc: 53.73 ng/ml



#2 Decachlorobiphenyl

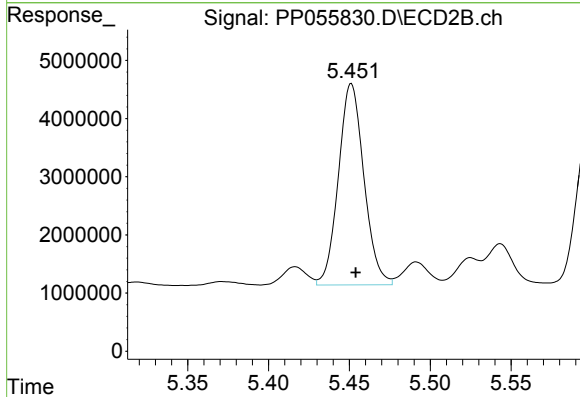
R.T.: 8.571 min
Delta R.T.: -0.005 min
Response: 64117901
Conc: 56.52 ng/ml



#26 AR-1254-1

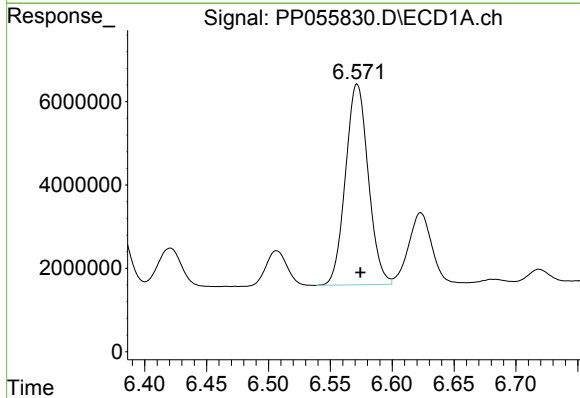
R.T.: 6.353 min
 Delta R.T.: -0.002 min
 Response: 39107965
 Conc: 531.92 ng/ml

Instrument :
 ECD_P
 ClientSampleId :
 AR1254CCC500



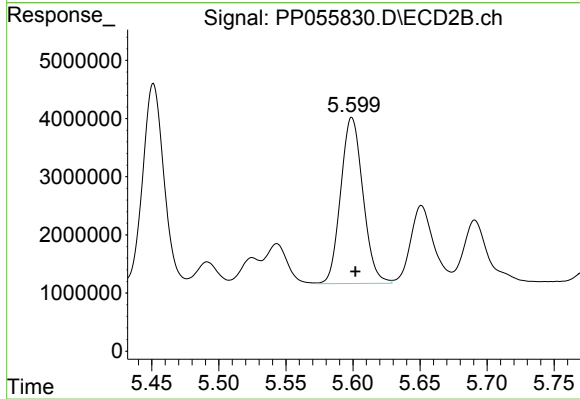
#26 AR-1254-1

R.T.: 5.451 min
 Delta R.T.: -0.003 min
 Response: 37998874
 Conc: 516.48 ng/ml



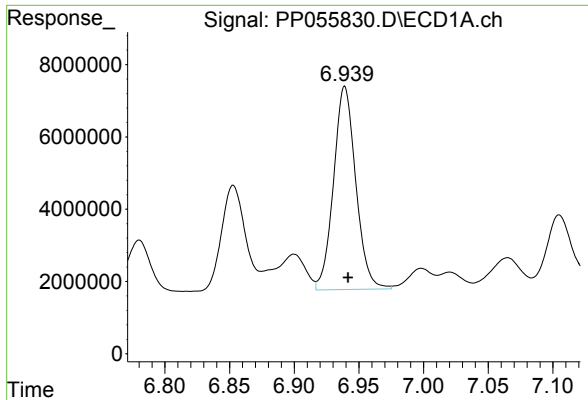
#27 AR-1254-2

R.T.: 6.572 min
 Delta R.T.: -0.003 min
 Response: 61755664
 Conc: 535.12 ng/ml



#27 AR-1254-2

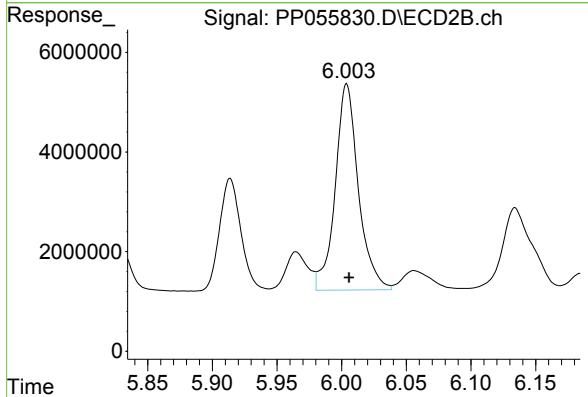
R.T.: 5.599 min
 Delta R.T.: -0.003 min
 Response: 32967144
 Conc: 523.98 ng/ml



#28 AR-1254-3

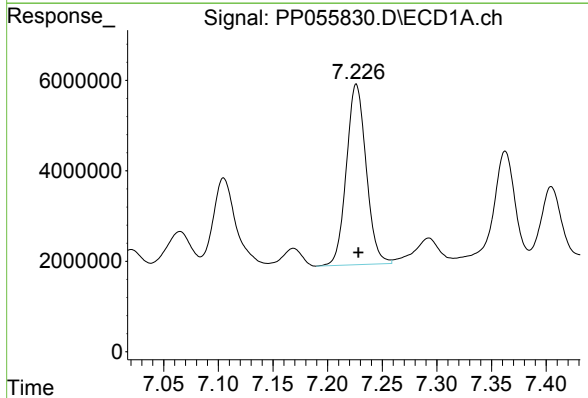
R.T.: 6.939 min
 Delta R.T.: -0.002 min
 Response: 67362784
 Conc: 547.36 ng/ml

Instrument :
 ECD_P
 ClientSampleId :
 AR1254CCC500



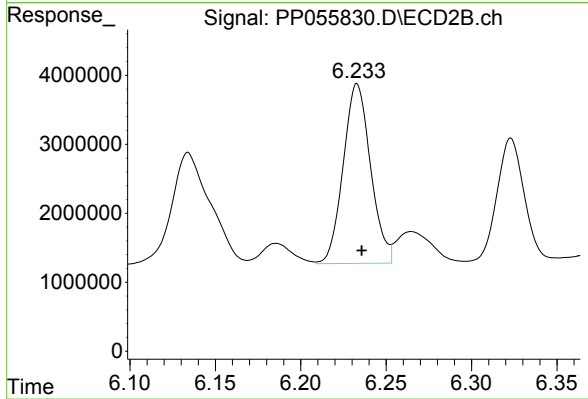
#28 AR-1254-3

R.T.: 6.004 min
 Delta R.T.: -0.002 min
 Response: 51630868
 Conc: 526.43 ng/ml



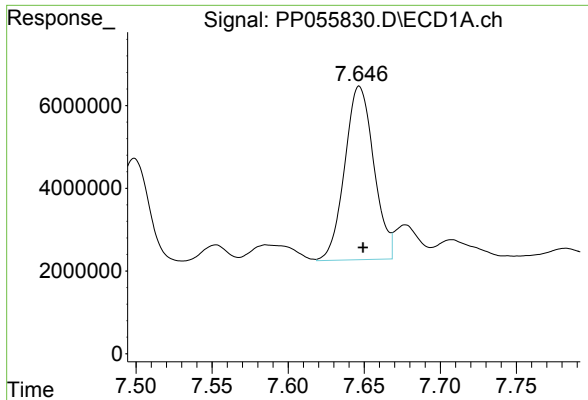
#29 AR-1254-4

R.T.: 7.226 min
 Delta R.T.: -0.002 min
 Response: 50275920
 Conc: 547.37 ng/ml



#29 AR-1254-4

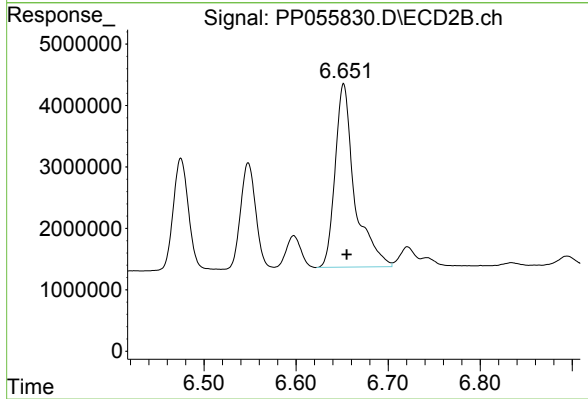
R.T.: 6.233 min
 Delta R.T.: -0.003 min
 Response: 29037275
 Conc: 527.51 ng/ml



#30 AR-1254-5

R.T.: 7.647 min
Delta R.T.: -0.002 min
Response: 55753491
Conc: 530.46 ng/ml

Instrument :
ECD_P
ClientSampleId :
AR1254CCC500



#30 AR-1254-5

R.T.: 6.652 min
Delta R.T.: -0.003 min
Response: 43883448
Conc: 540.11 ng/ml