

Data Path : Z:\pestpcbsrv\HPCHEM1\ECD_P\Data\PP022224\
 Data File : PP063327.D
 Signal(s) : Signal #1: ECD1A.ch Signal #2: ECD2B.ch
 Acq On : 22 Feb 2024 18:36
 Operator : YP\AJ
 Sample : AR1254CCC500
 Misc :
 ALS Vial : 4 Sample Multiplier: 1

Instrument :
 ECD_P
 ClientSampleId :
 EDGEMERE

Integration File signal 1: autoint1.e
 Integration File signal 2: autoint2.e
 Quant Time: Feb 22 21:02:01 2024
 Quant Method : Z:\pestpcbsrv\HPCHEM1\ECD_P\methods\PP020124.M
 Quant Title : GC EXTRACTABLES
 QLast Update : Mon Feb 05 12:13:11 2024
 Response via : Initial Calibration
 Integrator: ChemStation

Volume Inj. : 2 µl
 Signal #1 Phase : ZB-MR1 Signal #2 Phase: ZB-MR2
 Signal #1 Info : 30Mx0.32mmx 0.50µ Signal #2 Info : 30M x 0.32mm x 0.25µm

Compound	RT#1	RT#2	Resp#1	Resp#2	ng/ml	ng/ml
System Monitoring Compounds						
1) SA Tetrachlo...	4.493	3.646	99278597	102.3E6	41.505	43.029
2) SA Decachlor...	10.367	8.692	110.4E6	114.7E6	49.114	46.321
Target Compounds						
3) L1 AR-1016-1	0.000	4.738	0	1059048	N.D.	14.804 #
4) L1 AR-1016-2	0.000	4.757	0	816606	N.D.	7.950 #
5) L1 AR-1016-3	0.000	4.935	0	612701	N.D.	11.080 #
6) L1 AR-1016-4	0.000	4.976	0	23724967	N.D.	479.415 #
7) L1 AR-1016-5	6.158	5.190	13897225	13552508	227.598	215.442
9) L2 AR-1221-2	4.803f	3.946	1617956	1367663	75.836	69.241
10) L2 AR-1221-3	0.000	4.024	0	361560	N.D.	5.938 #
11) L3 AR-1232-1	0.000	4.024	0	361560	N.D.	6.727 #
12) L3 AR-1232-2	0.000	4.757	0	816606	N.D.	17.041 #
13) L3 AR-1232-3	0.000	4.935	0	612701	N.D.	23.587 #
14) L3 AR-1232-4	0.000	5.018	0	7399219	N.D.	283.851 #
15) L3 AR-1232-5	5.951	5.190	22567373	13552508	978.869	497.064 #
16) L4 AR-1242-1	0.000	4.738	0	1059048	N.D.	19.488 #
17) L4 AR-1242-2	0.000	4.757	0	816606	N.D.	10.485 #
18) L4 AR-1242-3	0.000	4.935	0	612701	N.D.	14.458 #
19) L4 AR-1242-4	0.000	5.018	0	7399219	N.D.	158.432 #
20) L4 AR-1242-5	6.607	5.545	13224289	55917706	296.529	1080.480 #
21) L5 AR-1248-1	0.000	4.738	0	1059048	N.D.	25.563 #
22) L5 AR-1248-2	5.951	4.976	22567373	23724967	314.118	358.598
23) L5 AR-1248-3	6.158	5.018	13897225	7399219	178.841	105.622 #
24) L5 AR-1248-4	6.564	5.190	17328028	13552508	232.518	169.599 #
25) L5 AR-1248-5	6.607	5.585	13224289	6369529	169.994	92.835 #
26) L6 AR-1254-1	6.538	5.545	40180333	55917706	450.267	462.333
27) L6 AR-1254-2	6.759	5.693	59564542	50368441	451.675	465.976
28) L6 AR-1254-3	7.128	6.099	64849367	80407209	471.740	475.434
29) L6 AR-1254-4	7.416	6.329	41140528	40223556	500.674	504.028
30) L6 AR-1254-5	7.839	6.750	49924315	71013993	484.963	504.065
31) L7 AR-1260-1	7.294	6.231	30052374	40190346	246.921	303.206
32) L7 AR-1260-2	7.553	6.419	30944573	32689088	243.316	221.318
33) L7 AR-1260-3	7.899	6.573	8241347	30032620	79.725	207.153 #
34) L7 AR-1260-4	8.131	7.050	19566253	3710407	166.646	30.439 #
35) L7 AR-1260-5	8.475	7.292	7014883	8803431	35.745	35.433
36) L8 AR-1262-1	7.974	6.841	2170062	2714105	34.284	38.250
37) L8 AR-1262-2	8.475	7.050	7014883	3710407	30.440	22.646 #
38) L8 AR-1262-3	8.813	0.000	5957682	0	36.058	N.D. #
39) L8 AR-1262-4	8.864f	7.640	1958780	8099122	14.503	38.433 #
40) L8 AR-1262-5	0.000	8.139	0	591812	N.D.	7.249 #
41) L9 AR-1268-1	8.813f	0.000	5957682	0	20.457	N.D. #
42) L9 AR-1268-2	8.864f	7.640	1958780	8099122	7.759	27.103 #

Data Path : Z:\pestpcbsrv\HPCHEM1\ECD_P\Data\PP022224\
 Data File : PP063327.D
 Signal(s) : Signal #1: ECD1A.ch Signal #2: ECD2B.ch
 Acq On : 22 Feb 2024 18:36
 Operator : YP\AJ
 Sample : AR1254CCC500
 Misc :
 ALS Vial : 4 Sample Multiplier: 1

Instrument :
 ECD_P
 ClientSampleId :
 EDGEMERE

Integration File signal 1: autoint1.e
 Integration File signal 2: autoint2.e
 Quant Time: Feb 22 21:02:01 2024
 Quant Method : Z:\pestpcbsrv\HPCHEM1\ECD_P\methods\PP020124.M
 Quant Title : GC EXTRACTABLES
 QLast Update : Mon Feb 05 12:13:11 2024
 Response via : Initial Calibration
 Integrator: ChemStation

Volume Inj. : 2 µl
 Signal #1 Phase : ZB-MR1 Signal #2 Phase: ZB-MR2
 Signal #1 Info : 30Mx0.32mmx 0.50µ Signal #2 Info : 30M x 0.32mm x 0.25µm

	Compound	RT#1	RT#2	Resp#1	Resp#2	ng/ml	ng/ml
44)	L9 AR-1268-4	0.000	8.139	0	591812	N.D.	6.741 #
45)	L9 AR-1268-5	0.000	8.433	0	816696	N.D.	0.970 #

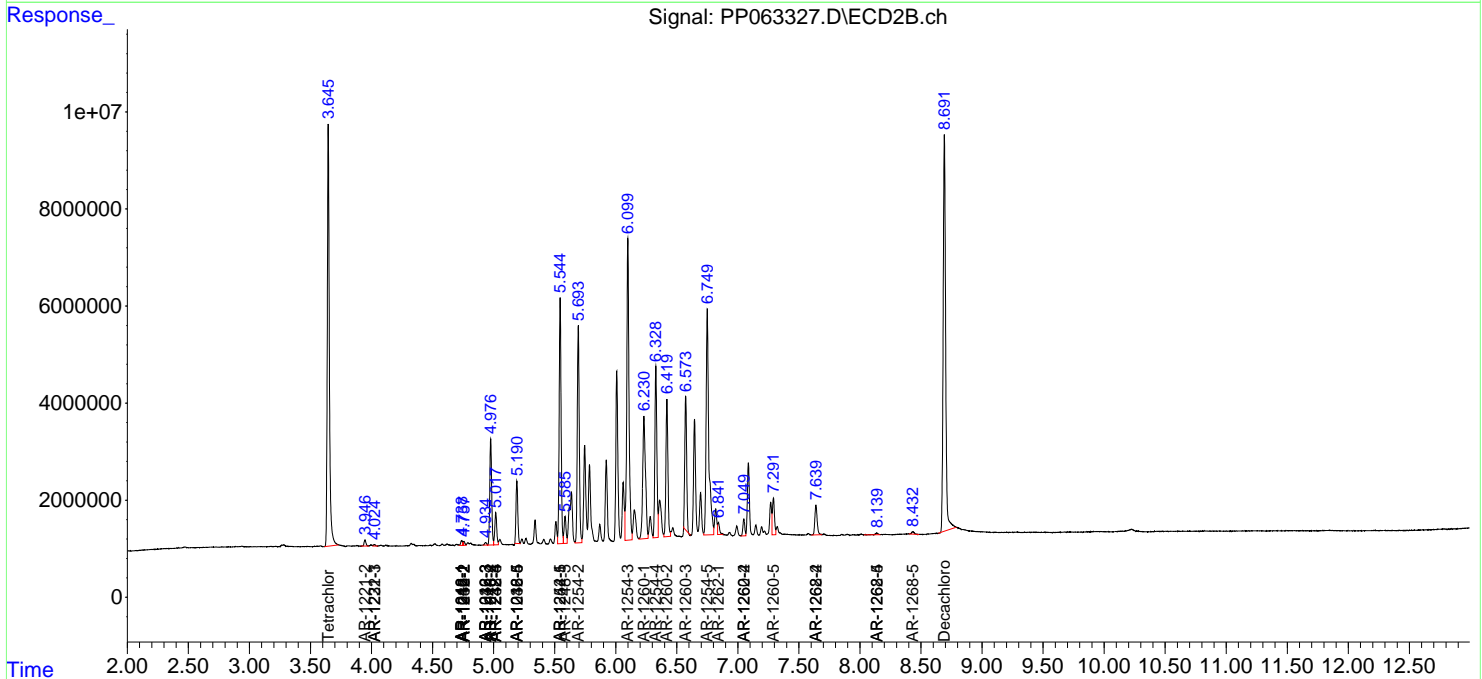
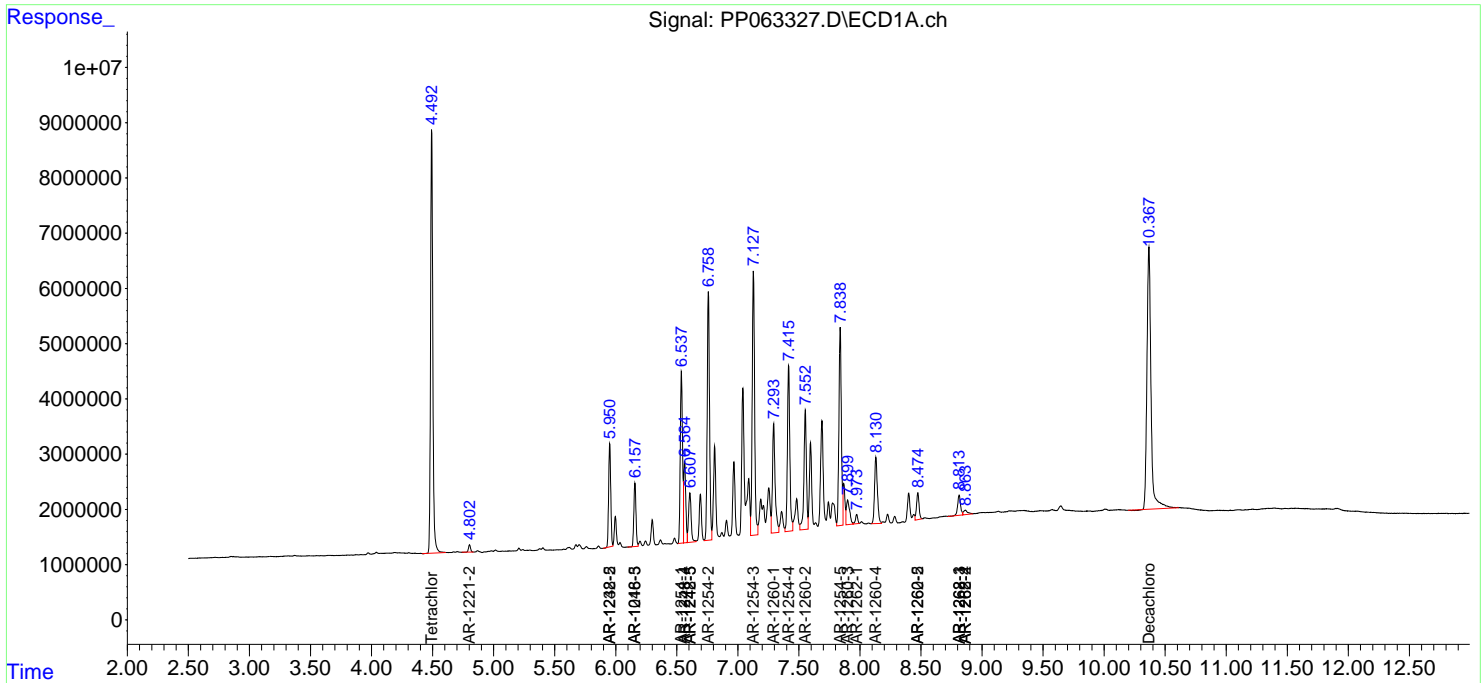
(f)=RT Delta > 1/2 Window (#)=Amounts differ by > 25% (m)=manual int.

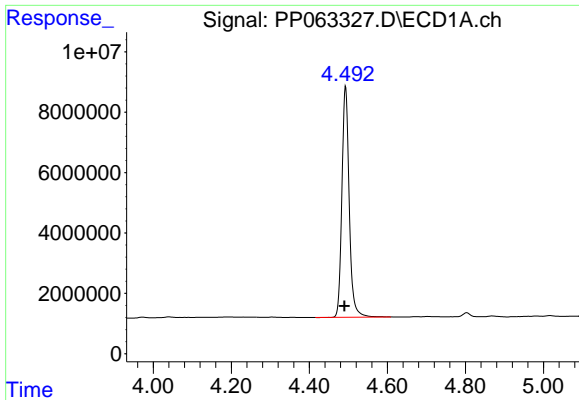
Data Path : Z:\pestpcbsrv\HPCHEM1\ECD_P\Data\PP022224\
 Data File : PP063327.D
 Signal(s) : Signal #1: ECD1A.ch Signal #2: ECD2B.ch
 Acq On : 22 Feb 2024 18:36
 Operator : YP\AJ
 Sample : AR1254CCC500
 Misc :
 ALS Vial : 4 Sample Multiplier: 1

Instrument :
 ECD_P
 ClientSampleId :
 EDGEMERE

Integration File signal 1: autoint1.e
 Integration File signal 2: autoint2.e
 Quant Time: Feb 22 21:02:01 2024
 Quant Method : Z:\pestpcbsrv\HPCHEM1\ECD_P\methods\PP020124.M
 Quant Title : GC EXTRACTABLES
 QLast Update : Mon Feb 05 12:13:11 2024
 Response via : Initial Calibration
 Integrator: ChemStation

Volume Inj. : 2 µl
 Signal #1 Phase : ZB-MR1 Signal #2 Phase: ZB-MR2
 Signal #1 Info : 30Mx0.32mmx 0.50µ Signal #2 Info : 30M x 0.32mm x 0.25µm

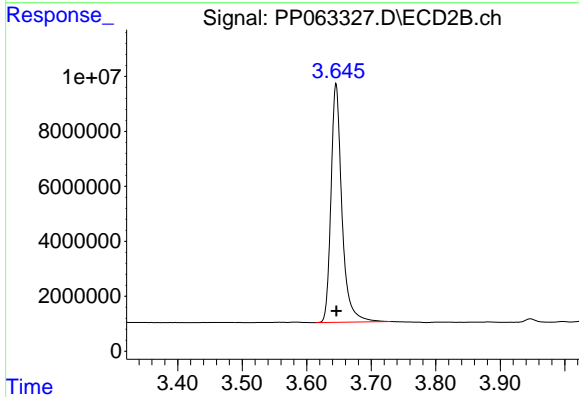




#1 Tetrachloro-m-xylene

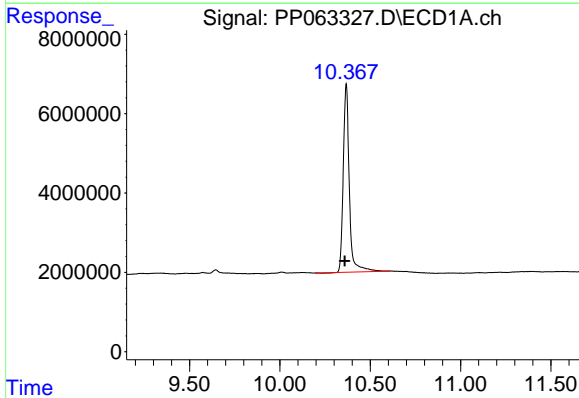
R.T.: 4.493 min
 Delta R.T.: 0.003 min
 Response: 99278597
 Conc: 41.51 ng/ml

Instrument :
 ECD_P
 ClientSampleId :
 EDGEMERE



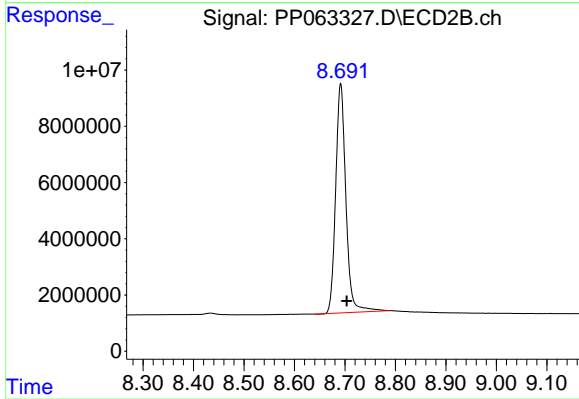
#1 Tetrachloro-m-xylene

R.T.: 3.646 min
 Delta R.T.: 0.000 min
 Response: 102276439
 Conc: 43.03 ng/ml



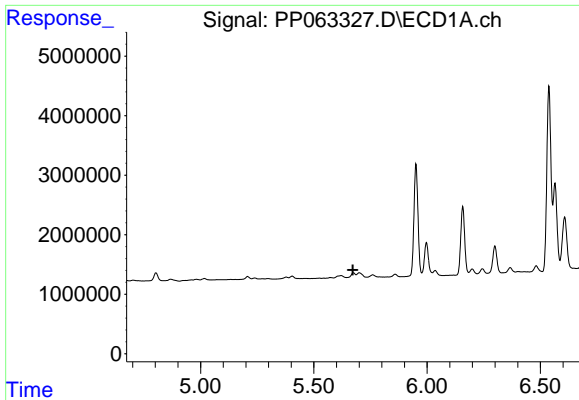
#2 Decachlorobiphenyl

R.T.: 10.367 min
 Delta R.T.: 0.008 min
 Response: 110449054
 Conc: 49.11 ng/ml



#2 Decachlorobiphenyl

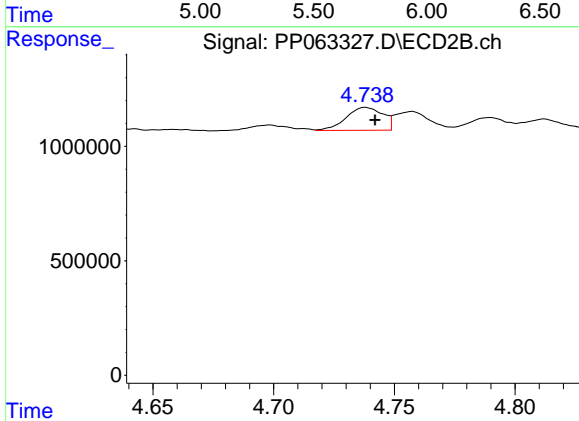
R.T.: 8.692 min
 Delta R.T.: -0.012 min
 Response: 114742756
 Conc: 46.32 ng/ml



#3 AR-1016-1

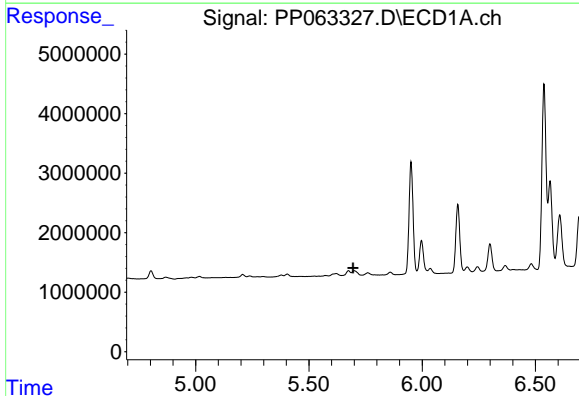
R.T.: 0.000 min
 Exp R.T.: 5.672 min
 Response: 0
 Conc: N.D.

Instrument :
 ECD_P
 ClientSampleId :
 EDGEMERE



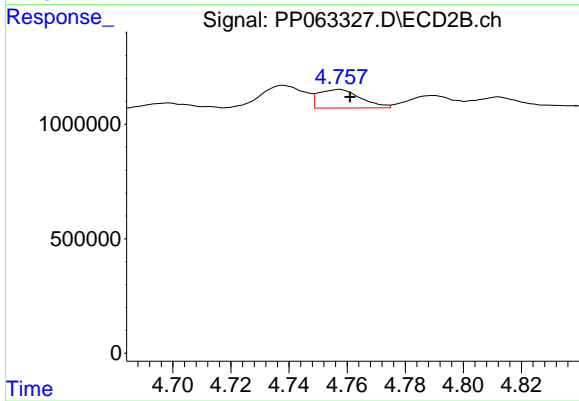
#3 AR-1016-1

R.T.: 4.738 min
 Delta R.T.: -0.004 min
 Response: 1059048
 Conc: 14.80 ng/ml



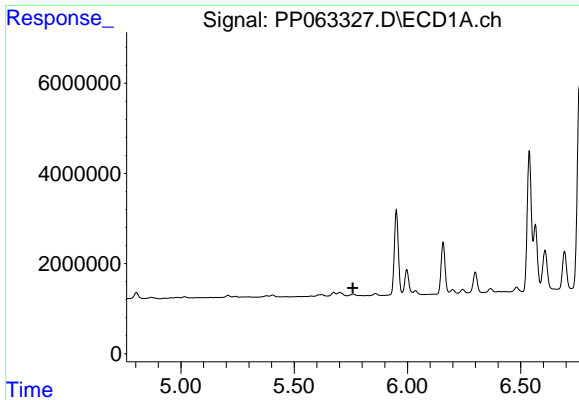
#4 AR-1016-2

R.T.: 0.000 min
 Exp R.T.: 5.695 min
 Response: 0
 Conc: N.D.



#4 AR-1016-2

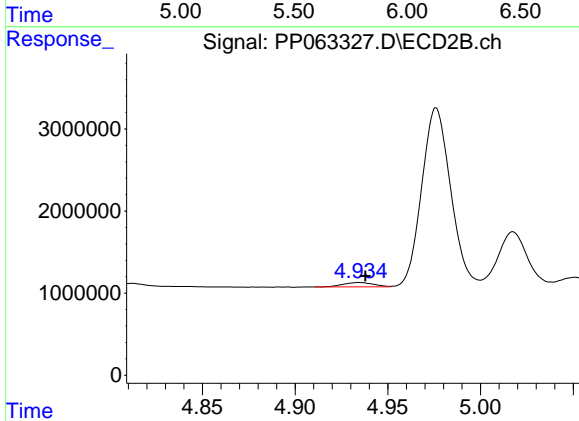
R.T.: 4.757 min
 Delta R.T.: -0.004 min
 Response: 816606
 Conc: 7.95 ng/ml



#5 AR-1016-3

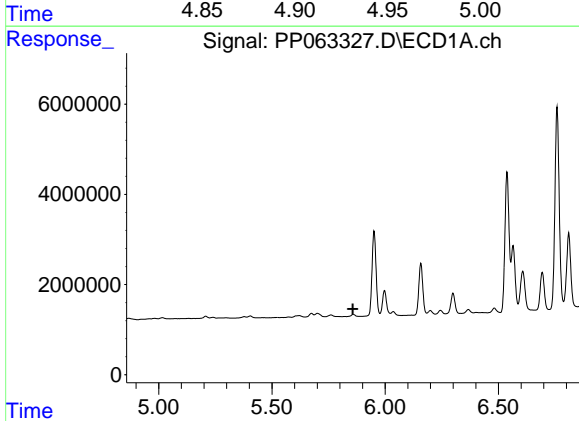
R.T.: 0.000 min
 Exp R.T.: 5.758 min
 Response: 0
 Conc: N.D.

Instrument :
 ECD_P
 ClientSampleId :
 EDGEMERE



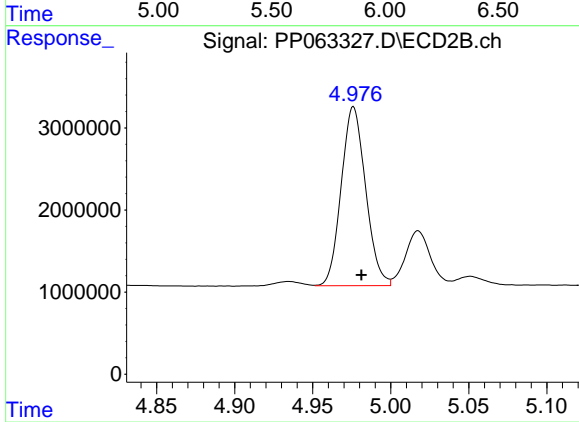
#5 AR-1016-3

R.T.: 4.935 min
 Delta R.T.: -0.003 min
 Response: 612701
 Conc: 11.08 ng/ml



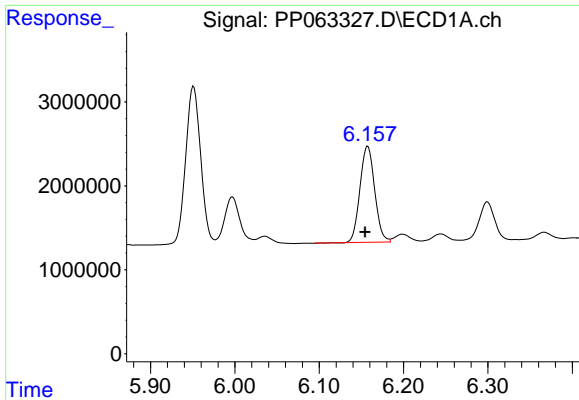
#6 AR-1016-4

R.T.: 0.000 min
 Exp R.T.: 5.857 min
 Response: 0
 Conc: N.D.



#6 AR-1016-4

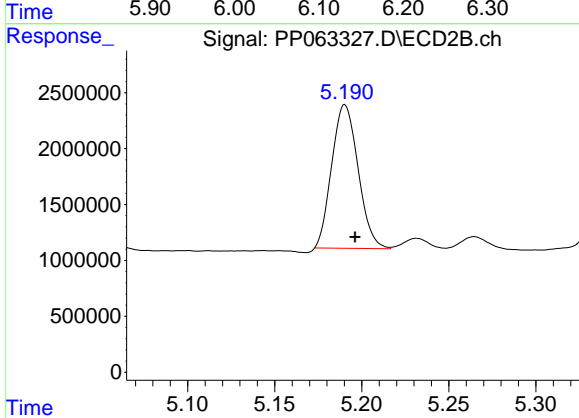
R.T.: 4.976 min
 Delta R.T.: -0.005 min
 Response: 23724967
 Conc: 479.42 ng/ml



#7 AR-1016-5

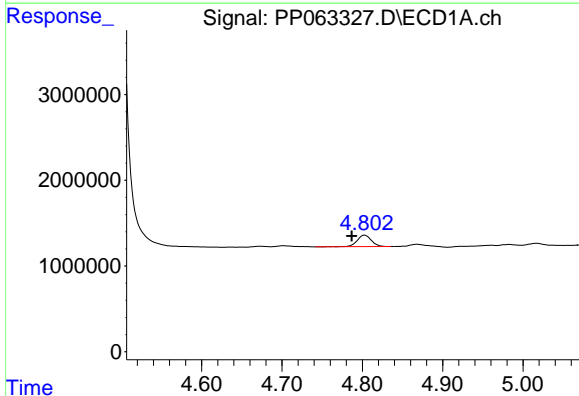
R.T.: 6.158 min
 Delta R.T.: 0.003 min
 Response: 13897225
 Conc: 227.60 ng/ml

Instrument :
 ECD_P
 ClientSampleId :
 EDGEMERE



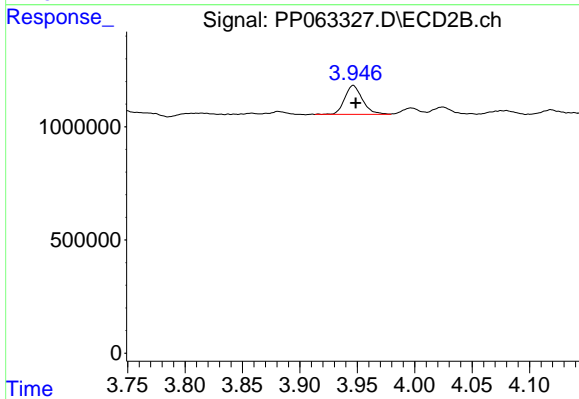
#7 AR-1016-5

R.T.: 5.190 min
 Delta R.T.: -0.006 min
 Response: 13552508
 Conc: 215.44 ng/ml



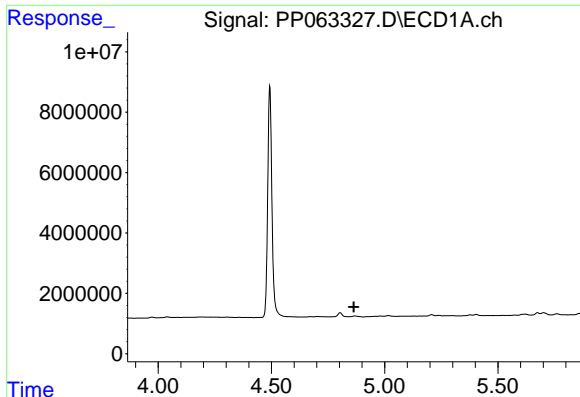
#9 AR-1221-2

R.T.: 4.803 min
 Delta R.T.: 0.016 min
 Response: 1617956
 Conc: 75.84 ng/ml



#9 AR-1221-2

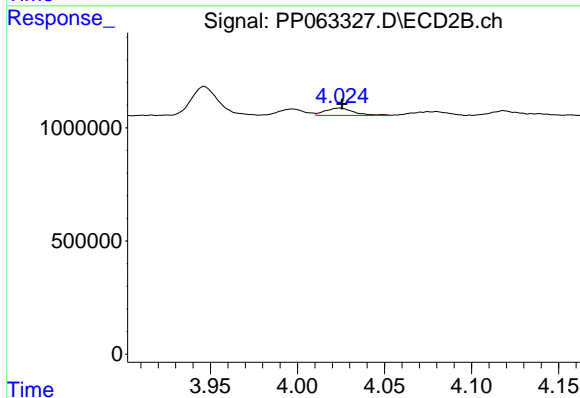
R.T.: 3.946 min
 Delta R.T.: -0.002 min
 Response: 1367663
 Conc: 69.24 ng/ml



#10 AR-1221-3

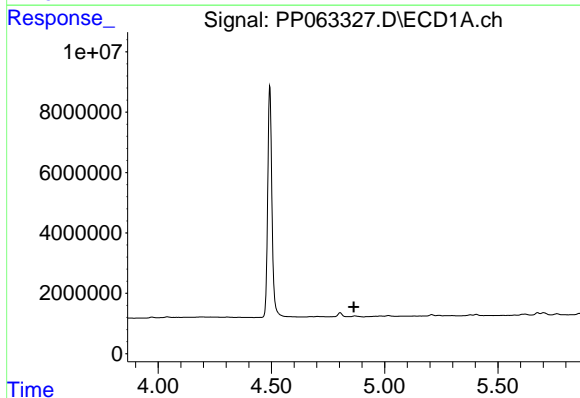
R.T.: 0.000 min
 Exp R.T. : 4.864 min
 Response: 0
 Conc: N.D.

Instrument :
 ECD_P
 ClientSampleId :
 EDGEMERE



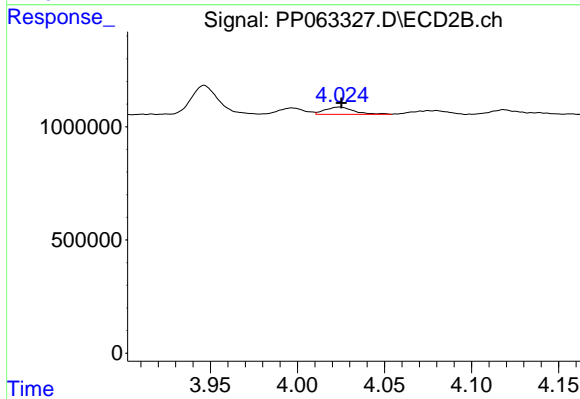
#10 AR-1221-3

R.T.: 4.024 min
 Delta R.T.: -0.001 min
 Response: 361560
 Conc: 5.94 ng/ml



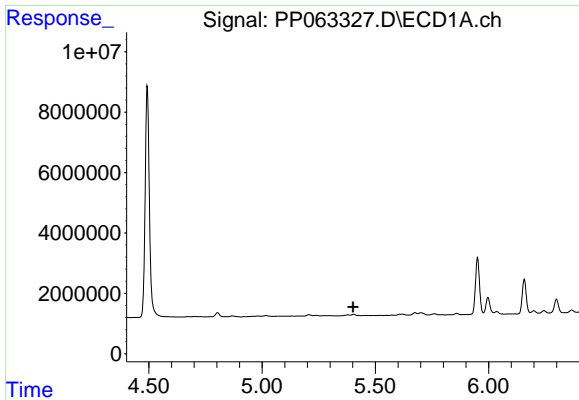
#11 AR-1232-1

R.T.: 0.000 min
 Exp R.T. : 4.864 min
 Response: 0
 Conc: N.D.



#11 AR-1232-1

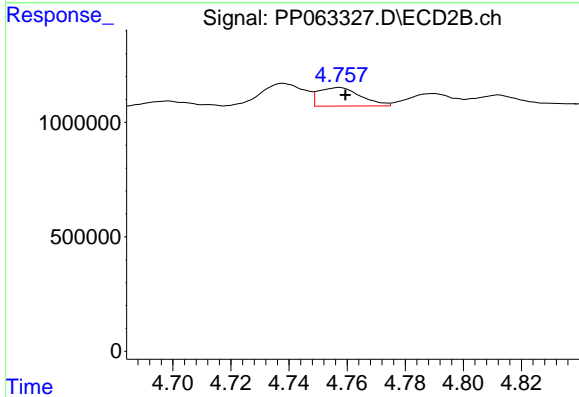
R.T.: 4.024 min
 Delta R.T.: -0.001 min
 Response: 361560
 Conc: 6.73 ng/ml



#12 AR-1232-2

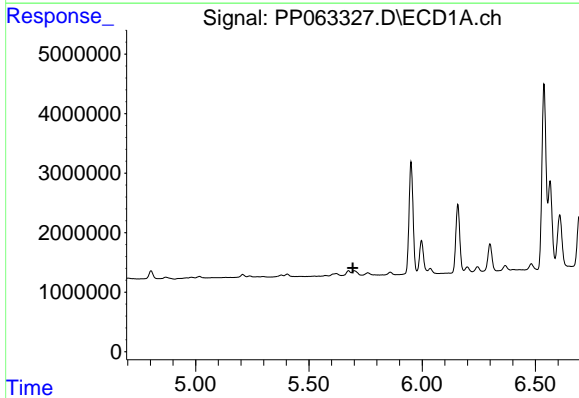
R.T.: 0.000 min
 Exp R.T.: 5.401 min
 Response: 0
 Conc: N.D.

Instrument :
 ECD_P
 ClientSampleId :
 EDGEMERE



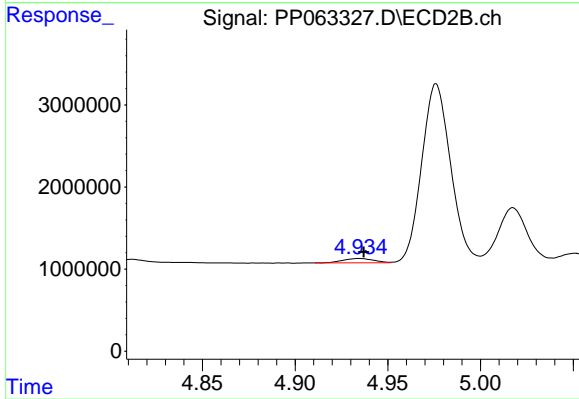
#12 AR-1232-2

R.T.: 4.757 min
 Delta R.T.: -0.002 min
 Response: 816606
 Conc: 17.04 ng/ml



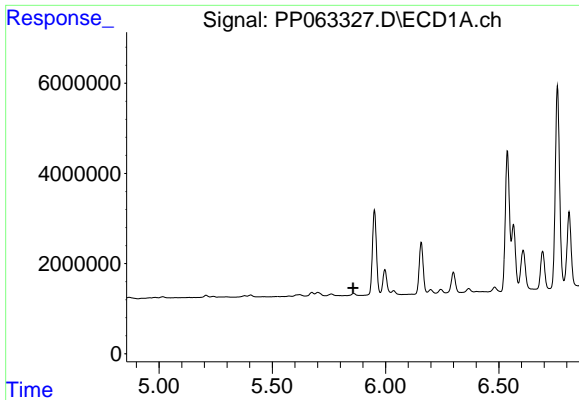
#13 AR-1232-3

R.T.: 0.000 min
 Exp R.T.: 5.694 min
 Response: 0
 Conc: N.D.



#13 AR-1232-3

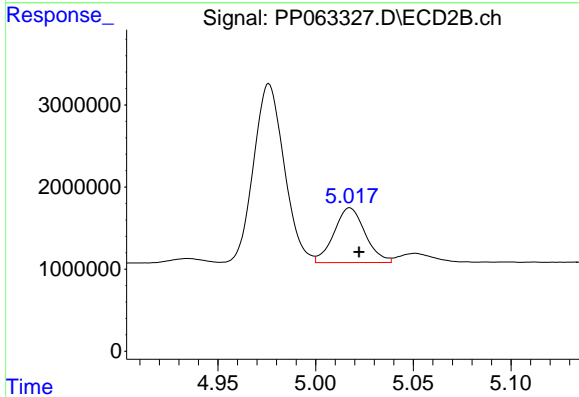
R.T.: 4.935 min
 Delta R.T.: -0.002 min
 Response: 612701
 Conc: 23.59 ng/ml



#14 AR-1232-4

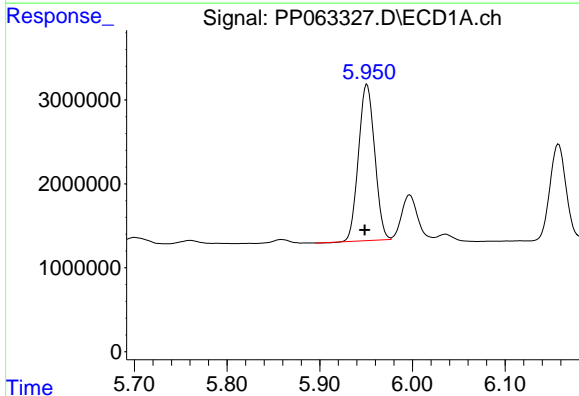
R.T.: 0.000 min
 Exp R.T.: 5.856 min
 Response: 0
 Conc: N.D.

Instrument :
 ECD_P
 ClientSampleId :
 EDGEMERE



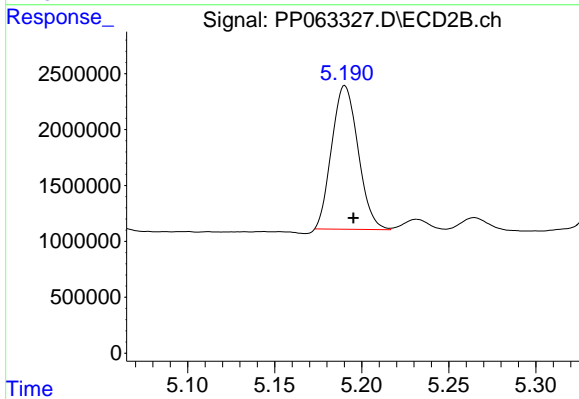
#14 AR-1232-4

R.T.: 5.018 min
 Delta R.T.: -0.005 min
 Response: 7399219
 Conc: 283.85 ng/ml



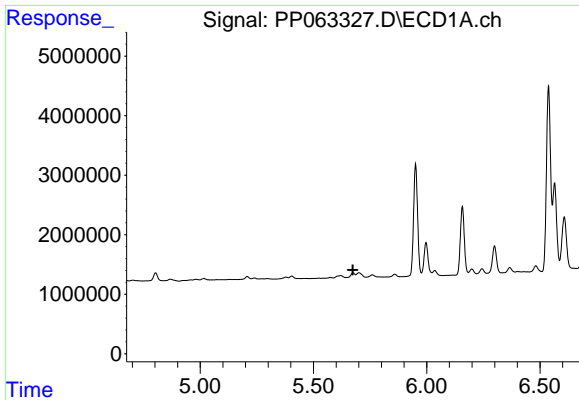
#15 AR-1232-5

R.T.: 5.951 min
 Delta R.T.: 0.003 min
 Response: 22567373
 Conc: 978.87 ng/ml



#15 AR-1232-5

R.T.: 5.190 min
 Delta R.T.: -0.005 min
 Response: 13552508
 Conc: 497.06 ng/ml

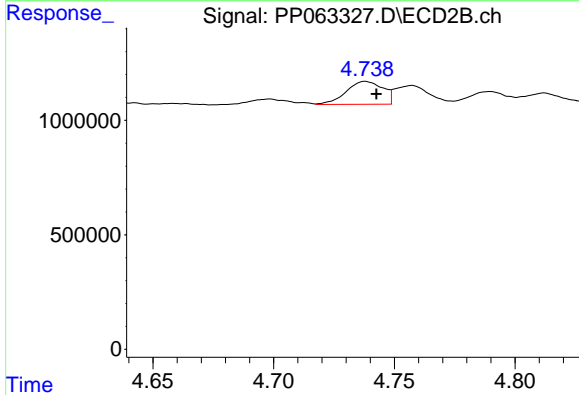


#16 AR-1242-1

R.T.: 0.000 min
 Exp R.T.: 5.673 min
 Response: 0
 Conc: N.D.

Instrument : ECD_P
 ClientSampleId : EDGEMERE

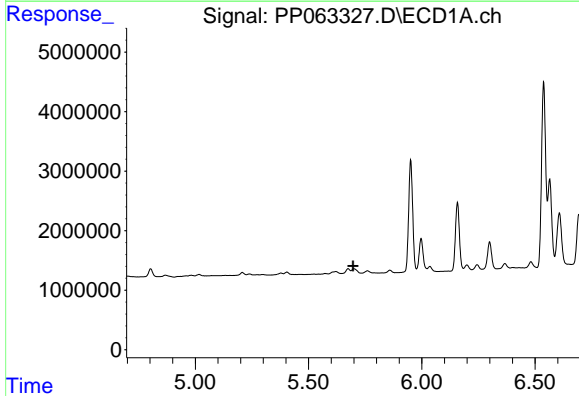
Time



#16 AR-1242-1

R.T.: 4.738 min
 Delta R.T.: -0.005 min
 Response: 1059048
 Conc: 19.49 ng/ml

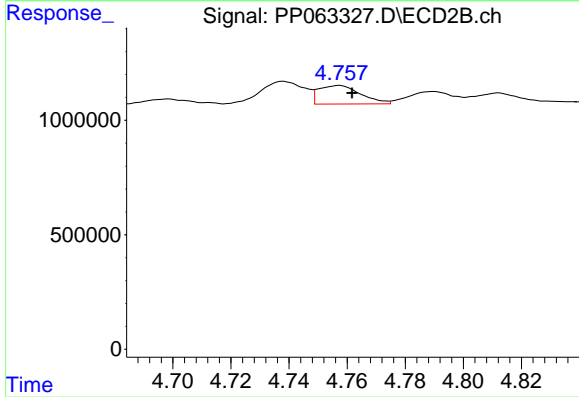
Time



#17 AR-1242-2

R.T.: 0.000 min
 Exp R.T.: 5.696 min
 Response: 0
 Conc: N.D.

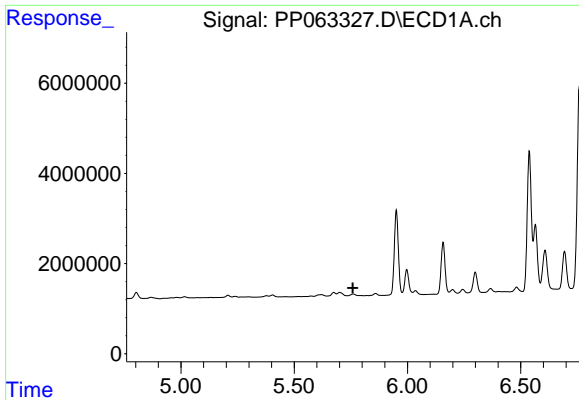
Time



#17 AR-1242-2

R.T.: 4.757 min
 Delta R.T.: -0.005 min
 Response: 816606
 Conc: 10.49 ng/ml

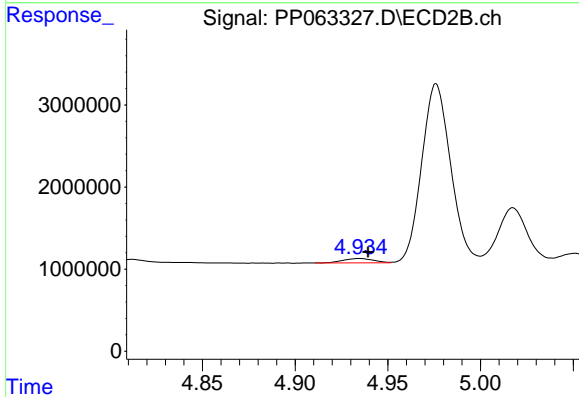
Time



#18 AR-1242-3

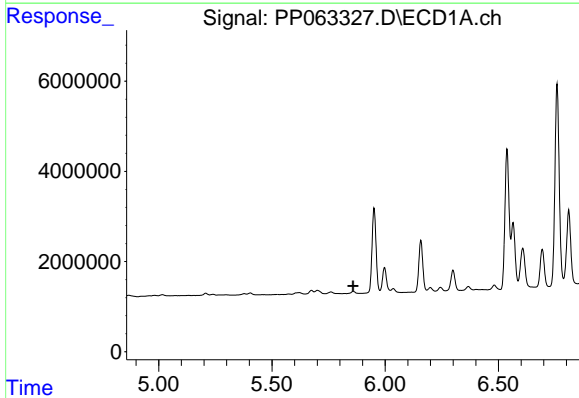
R.T.: 0.000 min
 Exp R.T.: 5.758 min
 Response: 0
 Conc: N.D.

Instrument :
 ECD_P
 ClientSampleId :
 EDGEMERE



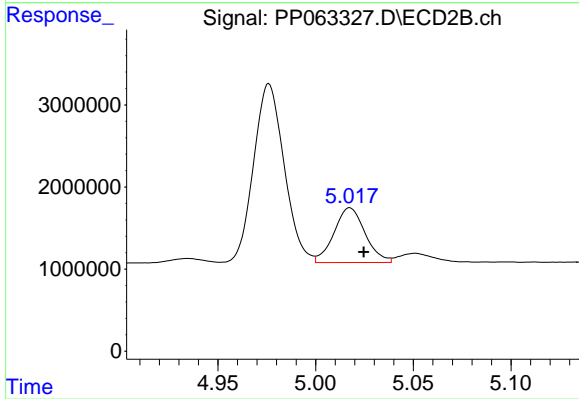
#18 AR-1242-3

R.T.: 4.935 min
 Delta R.T.: -0.005 min
 Response: 612701
 Conc: 14.46 ng/ml



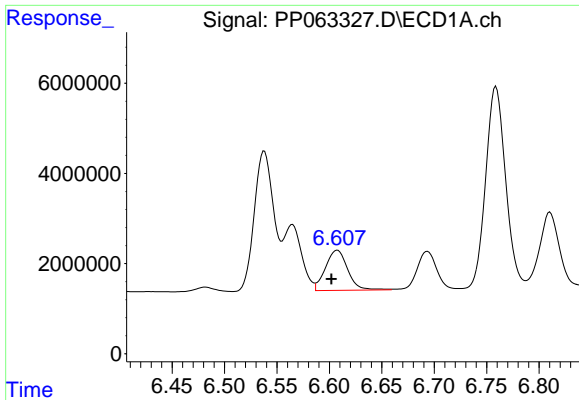
#19 AR-1242-4

R.T.: 0.000 min
 Exp R.T.: 5.858 min
 Response: 0
 Conc: N.D.



#19 AR-1242-4

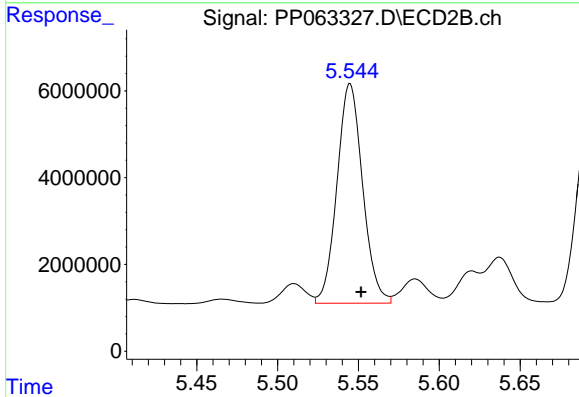
R.T.: 5.018 min
 Delta R.T.: -0.007 min
 Response: 7399219
 Conc: 158.43 ng/ml



#20 AR-1242-5

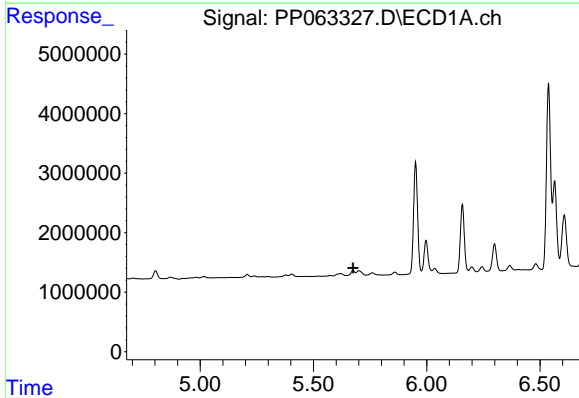
R.T.: 6.607 min
 Delta R.T.: 0.005 min
 Response: 13224289
 Conc: 296.53 ng/ml

Instrument :
 ECD_P
 ClientSampleId :
 EDGEMERE



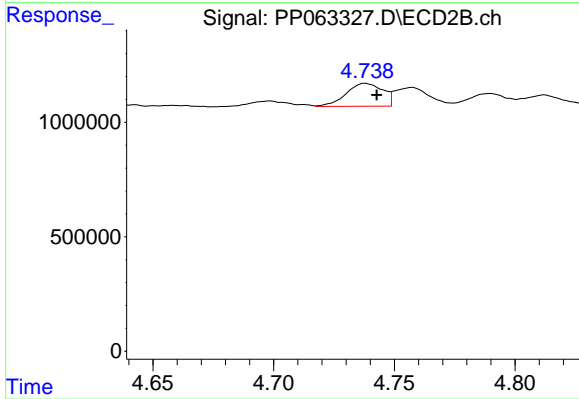
#20 AR-1242-5

R.T.: 5.545 min
 Delta R.T.: -0.007 min
 Response: 55917706
 Conc: 1080.48 ng/ml



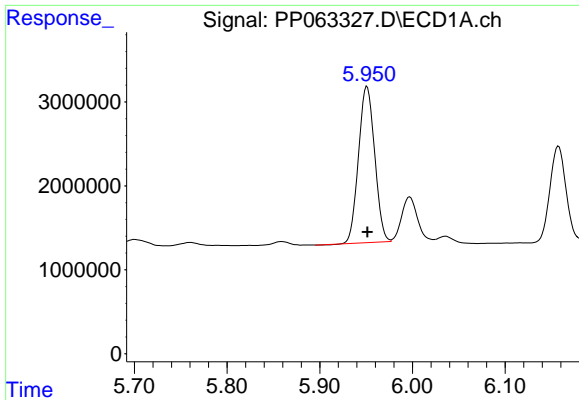
#21 AR-1248-1

R.T.: 0.000 min
 Exp R.T. : 5.675 min
 Response: 0
 Conc: N.D.



#21 AR-1248-1

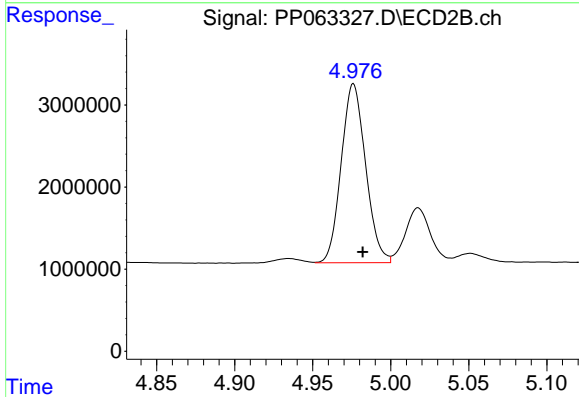
R.T.: 4.738 min
 Delta R.T.: -0.005 min
 Response: 1059048
 Conc: 25.56 ng/ml



#22 AR-1248-2

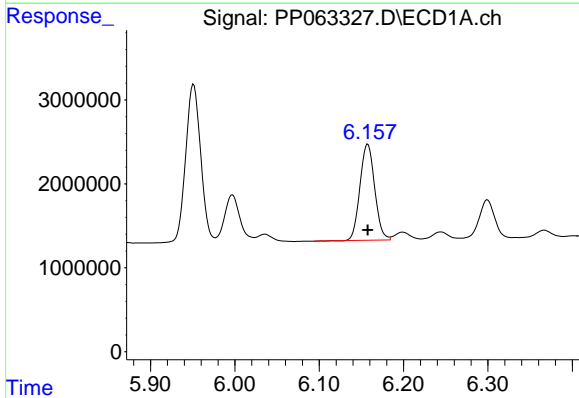
R.T.: 5.951 min
 Delta R.T.: 0.000 min
 Response: 22567373
 Conc: 314.12 ng/ml

Instrument :
 ECD_P
 ClientSampleId :
 EDGEMERE



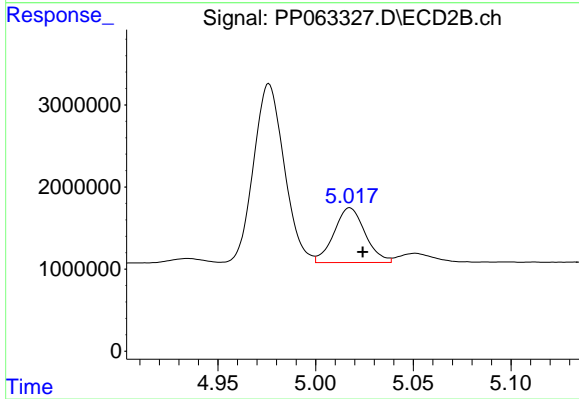
#22 AR-1248-2

R.T.: 4.976 min
 Delta R.T.: -0.006 min
 Response: 23724967
 Conc: 358.60 ng/ml



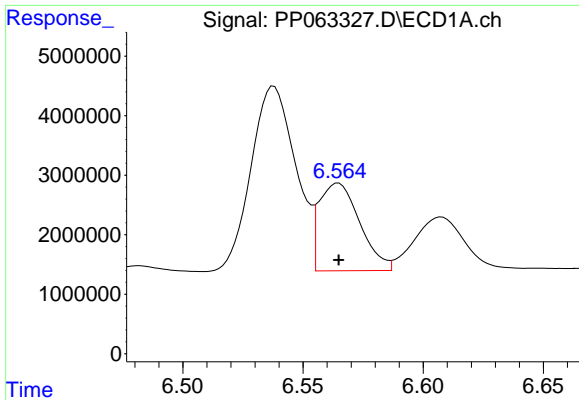
#23 AR-1248-3

R.T.: 6.158 min
 Delta R.T.: 0.000 min
 Response: 13897225
 Conc: 178.84 ng/ml



#23 AR-1248-3

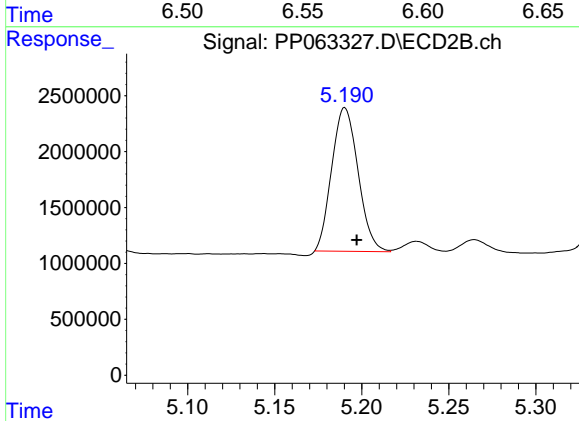
R.T.: 5.018 min
 Delta R.T.: -0.006 min
 Response: 7399219
 Conc: 105.62 ng/ml



#24 AR-1248-4

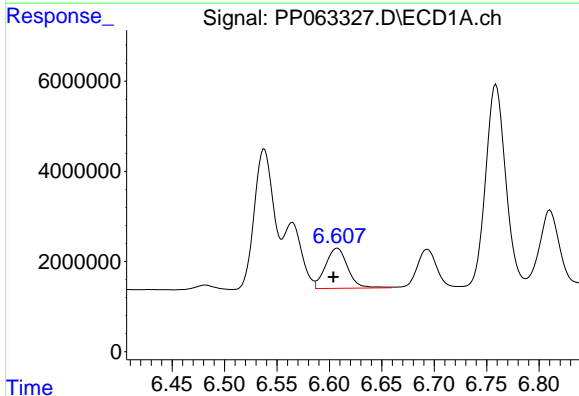
R.T.: 6.564 min
 Delta R.T.: 0.000 min
 Response: 17328028
 Conc: 232.52 ng/ml

Instrument :
 ECD_P
 ClientSampleId :
 EDGEMERE



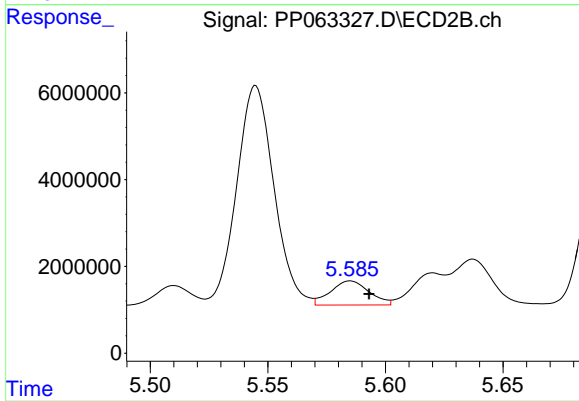
#24 AR-1248-4

R.T.: 5.190 min
 Delta R.T.: -0.007 min
 Response: 13552508
 Conc: 169.60 ng/ml



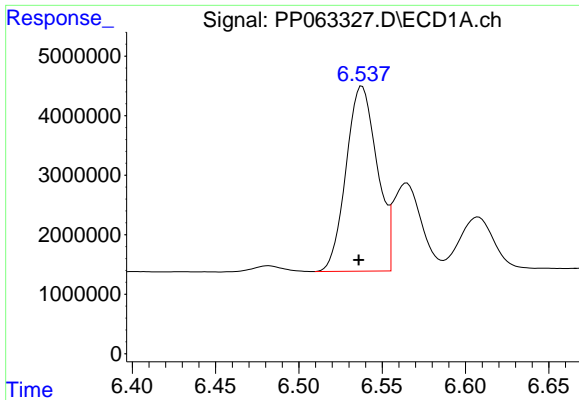
#25 AR-1248-5

R.T.: 6.607 min
 Delta R.T.: 0.004 min
 Response: 13224289
 Conc: 169.99 ng/ml



#25 AR-1248-5

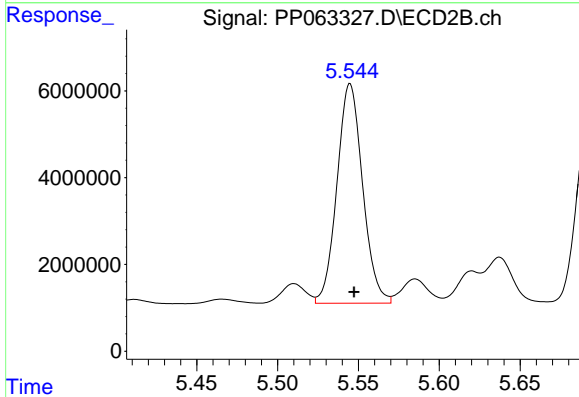
R.T.: 5.585 min
 Delta R.T.: -0.008 min
 Response: 6369529
 Conc: 92.83 ng/ml



#26 AR-1254-1

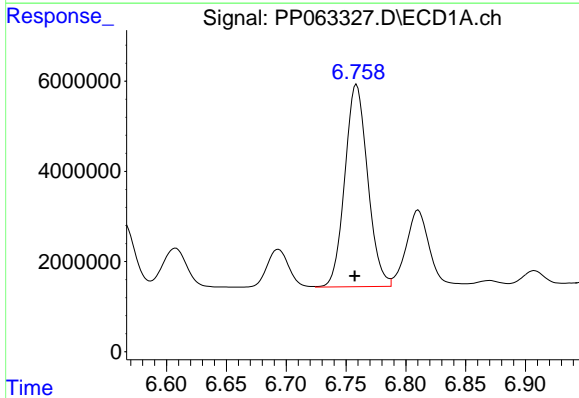
R.T.: 6.538 min
Delta R.T.: 0.002 min
Response: 40180333
Conc: 450.27 ng/ml

Instrument :
ECD_P
ClientSampleId :
EDGEMERE



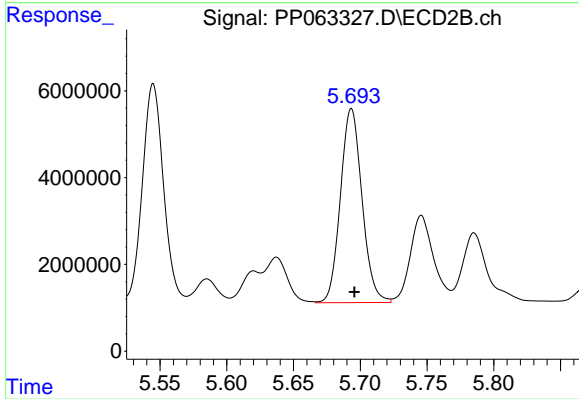
#26 AR-1254-1

R.T.: 5.545 min
Delta R.T.: -0.002 min
Response: 55917706
Conc: 462.33 ng/ml



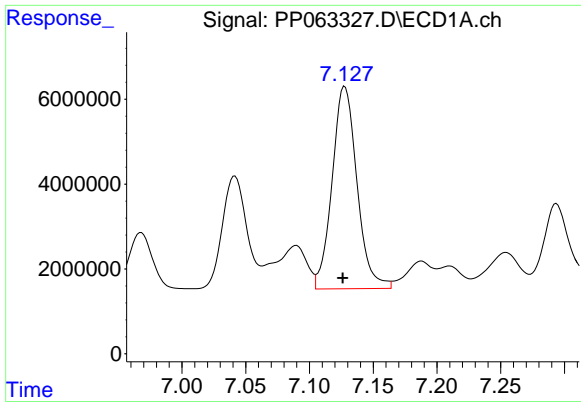
#27 AR-1254-2

R.T.: 6.759 min
Delta R.T.: 0.002 min
Response: 59564542
Conc: 451.68 ng/ml



#27 AR-1254-2

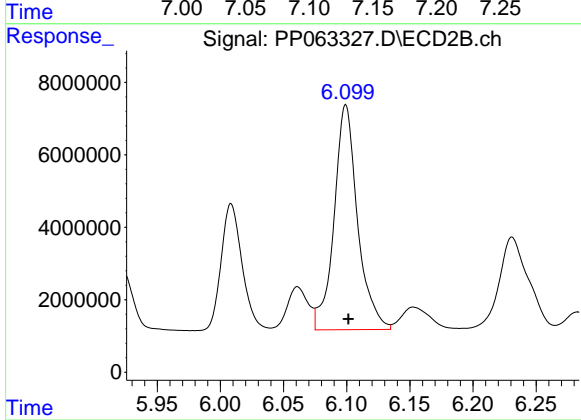
R.T.: 5.693 min
Delta R.T.: -0.002 min
Response: 50368441
Conc: 465.98 ng/ml



#28 AR-1254-3

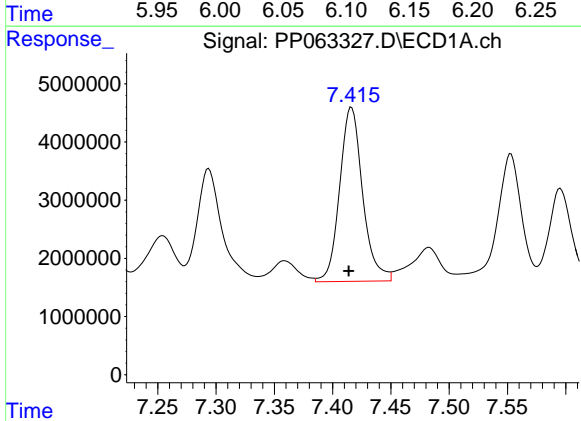
R.T.: 7.128 min
 Delta R.T.: 0.002 min
 Response: 64849367
 Conc: 471.74 ng/ml

Instrument :
 ECD_P
 ClientSampleId :
 EDGEMERE



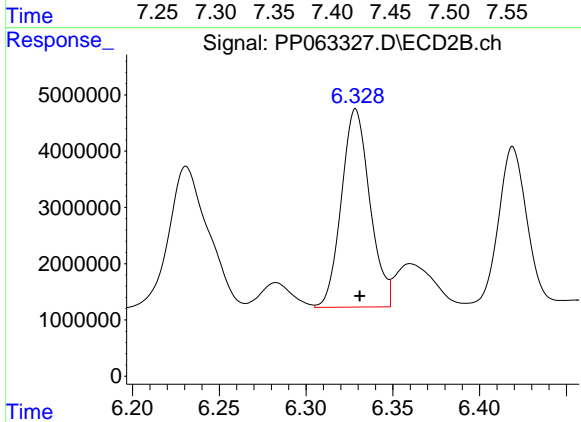
#28 AR-1254-3

R.T.: 6.099 min
 Delta R.T.: -0.002 min
 Response: 80407209
 Conc: 475.43 ng/ml



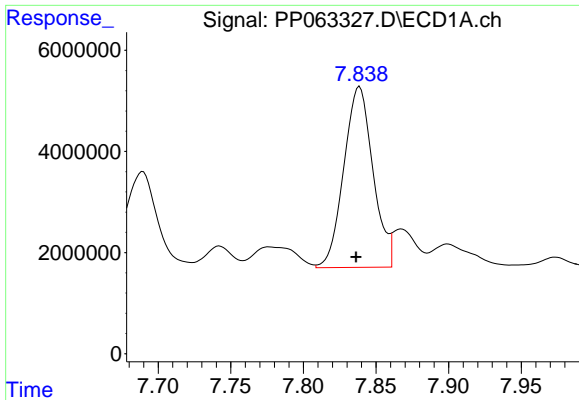
#29 AR-1254-4

R.T.: 7.416 min
 Delta R.T.: 0.002 min
 Response: 41140528
 Conc: 500.67 ng/ml



#29 AR-1254-4

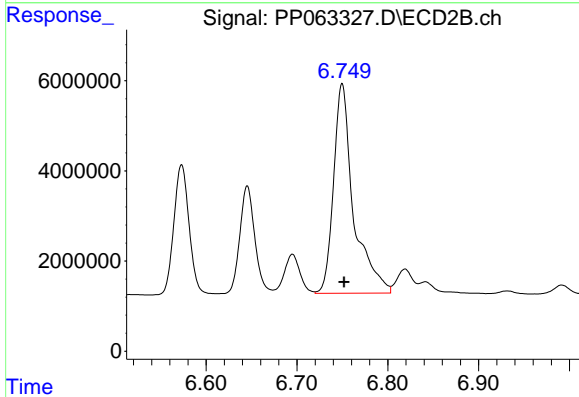
R.T.: 6.329 min
 Delta R.T.: -0.002 min
 Response: 40223556
 Conc: 504.03 ng/ml



#30 AR-1254-5

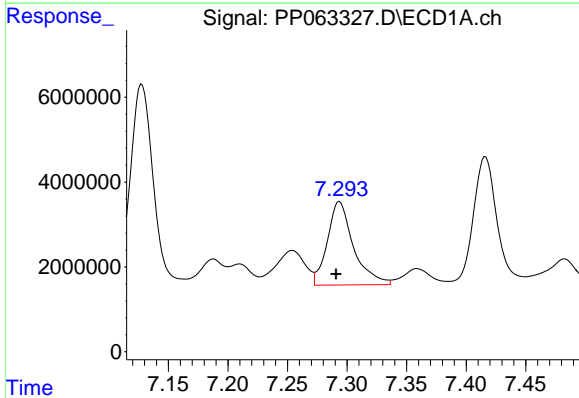
R.T.: 7.839 min
 Delta R.T.: 0.002 min
 Response: 49924315
 Conc: 484.96 ng/ml

Instrument :
 ECD_P
 ClientSampleId :
 EDGEMERE



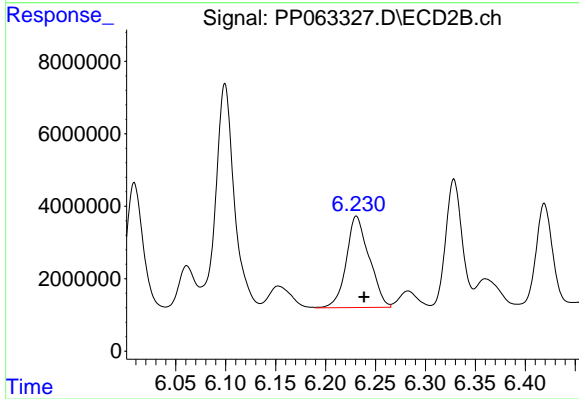
#30 AR-1254-5

R.T.: 6.750 min
 Delta R.T.: -0.002 min
 Response: 71013993
 Conc: 504.07 ng/ml



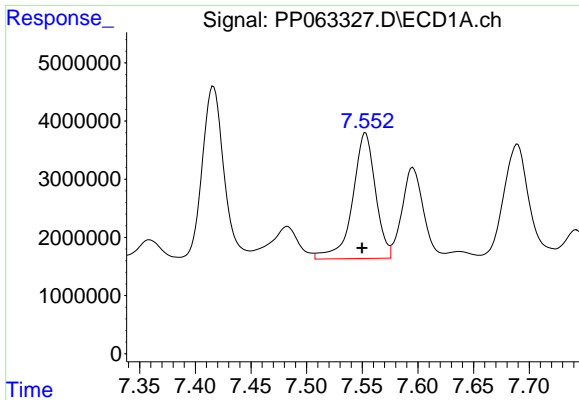
#31 AR-1260-1

R.T.: 7.294 min
 Delta R.T.: 0.003 min
 Response: 30052374
 Conc: 246.92 ng/ml



#31 AR-1260-1

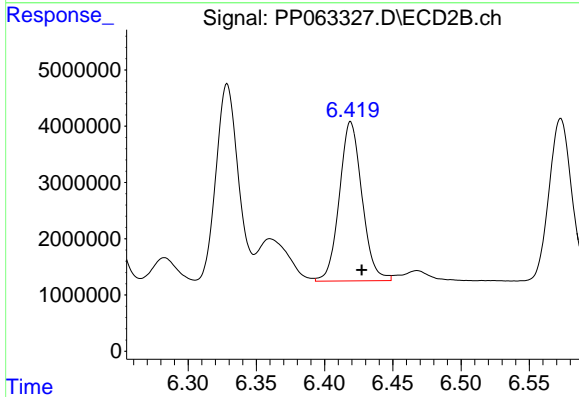
R.T.: 6.231 min
 Delta R.T.: -0.008 min
 Response: 40190346
 Conc: 303.21 ng/ml



#32 AR-1260-2

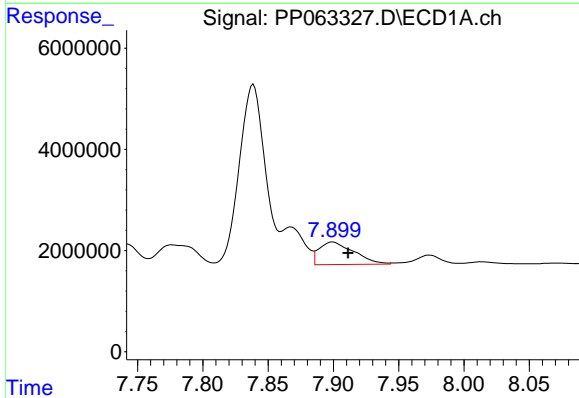
R.T.: 7.553 min
 Delta R.T.: 0.003 min
 Response: 30944573
 Conc: 243.32 ng/ml

Instrument :
 ECD_P
 ClientSampleId :
 EDGEMERE



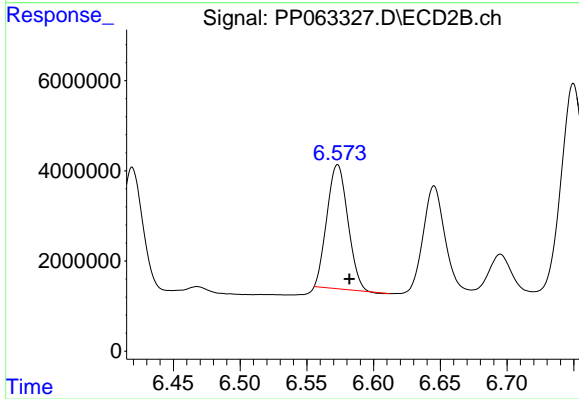
#32 AR-1260-2

R.T.: 6.419 min
 Delta R.T.: -0.008 min
 Response: 32689088
 Conc: 221.32 ng/ml



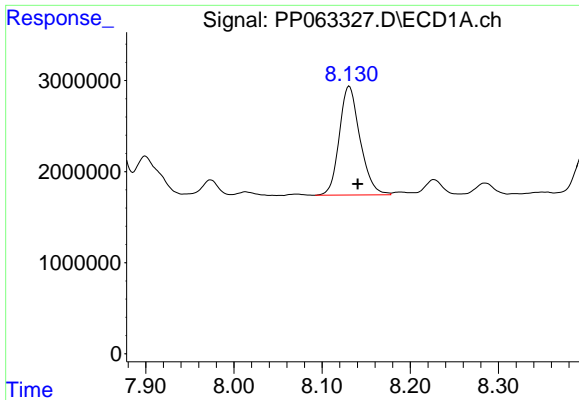
#33 AR-1260-3

R.T.: 7.899 min
 Delta R.T.: -0.012 min
 Response: 8241347
 Conc: 79.72 ng/ml



#33 AR-1260-3

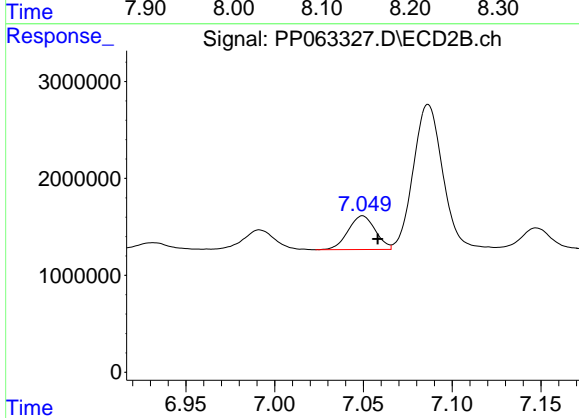
R.T.: 6.573 min
 Delta R.T.: -0.009 min
 Response: 30032620
 Conc: 207.15 ng/ml



#34 AR-1260-4

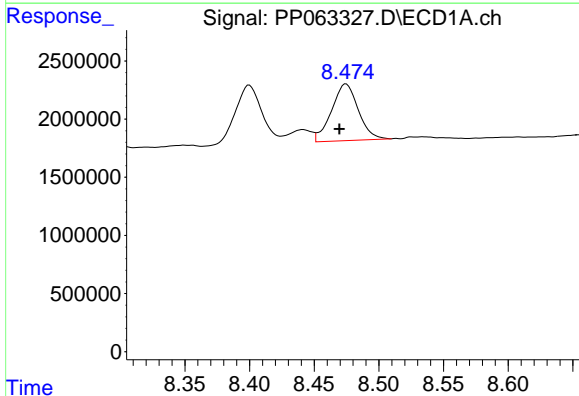
R.T.: 8.131 min
 Delta R.T.: -0.010 min
 Response: 19566253
 Conc: 166.65 ng/ml

Instrument :
 ECD_P
 ClientSampleId :
 EDGEMERE



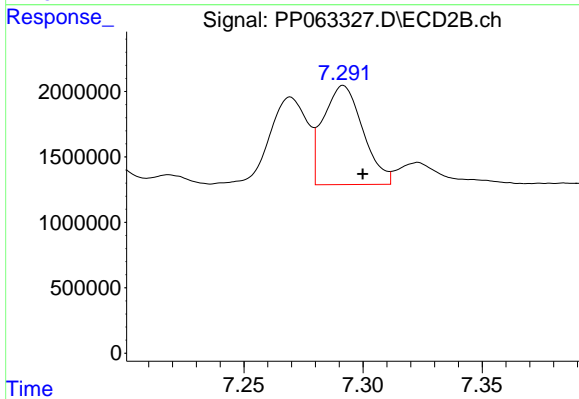
#34 AR-1260-4

R.T.: 7.050 min
 Delta R.T.: -0.009 min
 Response: 3710407
 Conc: 30.44 ng/ml



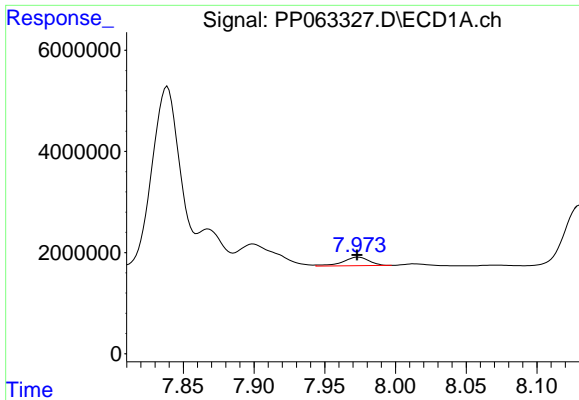
#35 AR-1260-5

R.T.: 8.475 min
 Delta R.T.: 0.005 min
 Response: 7014883
 Conc: 35.74 ng/ml



#35 AR-1260-5

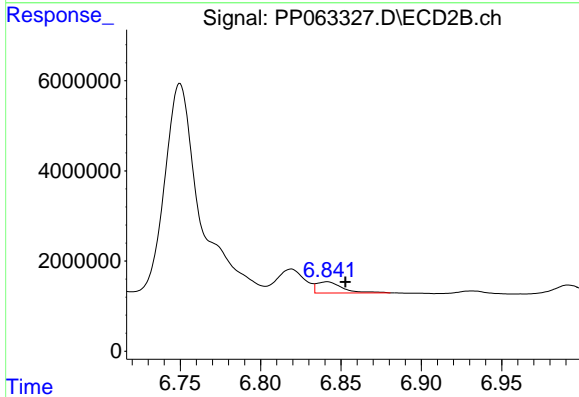
R.T.: 7.292 min
 Delta R.T.: -0.008 min
 Response: 8803431
 Conc: 35.43 ng/ml



#36 AR-1262-1

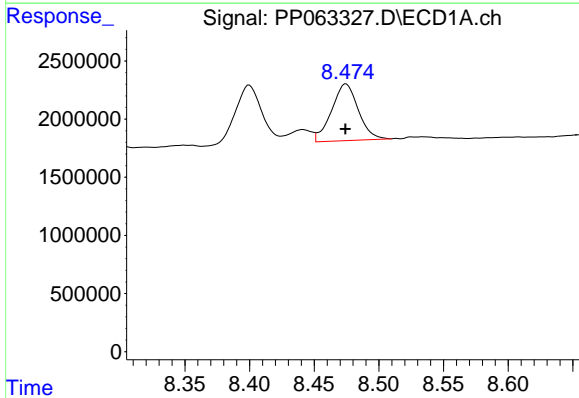
R.T.: 7.974 min
 Delta R.T.: 0.000 min
 Response: 2170062
 Conc: 34.28 ng/ml

Instrument :
 ECD_P
 ClientSampleId :
 EDGEMERE



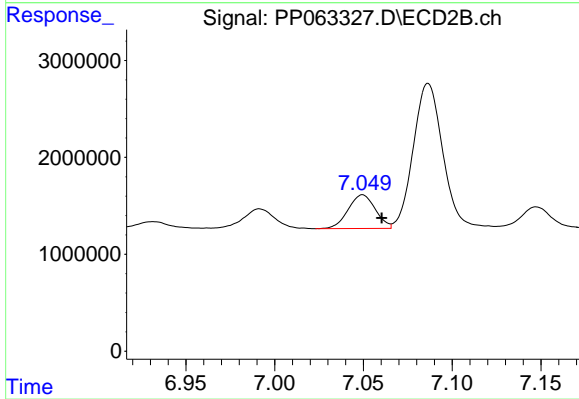
#36 AR-1262-1

R.T.: 6.841 min
 Delta R.T.: -0.011 min
 Response: 2714105
 Conc: 38.25 ng/ml



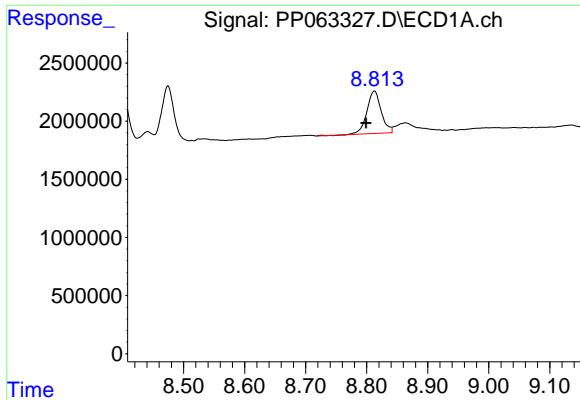
#37 AR-1262-2

R.T.: 8.475 min
 Delta R.T.: 0.000 min
 Response: 7014883
 Conc: 30.44 ng/ml



#37 AR-1262-2

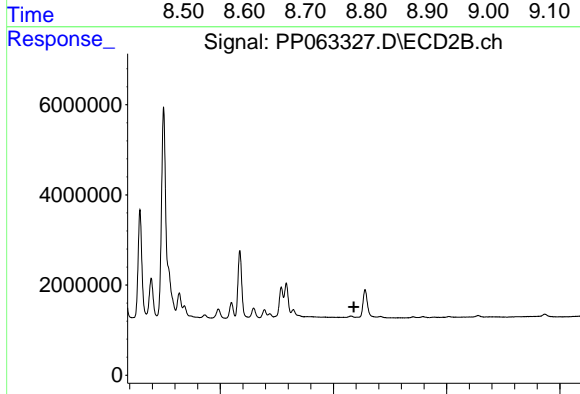
R.T.: 7.050 min
 Delta R.T.: -0.011 min
 Response: 3710407
 Conc: 22.65 ng/ml



#38 AR-1262-3

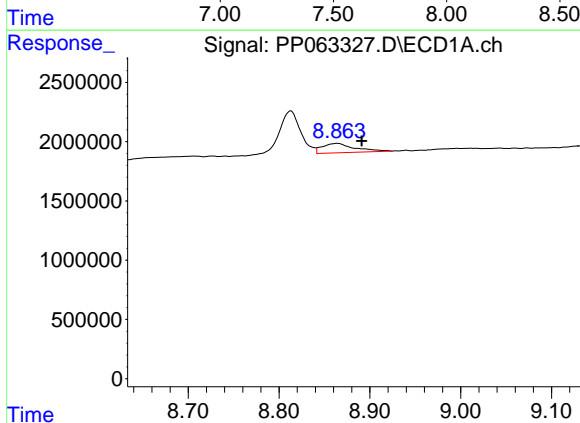
R.T.: 8.813 min
 Delta R.T.: 0.014 min
 Response: 5957682
 Conc: 36.06 ng/ml

Instrument :
 ECD_P
 ClientSampleId :
 EDGEMERE



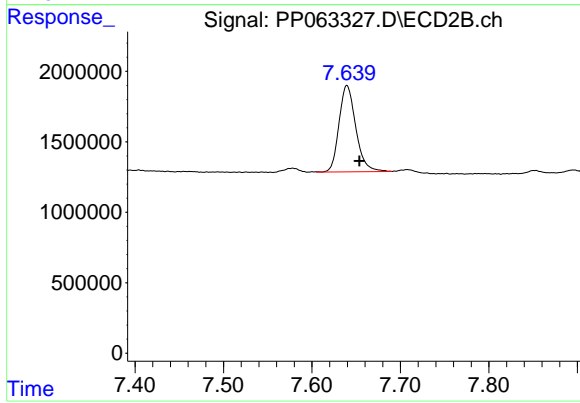
#38 AR-1262-3

R.T.: 0.000 min
 Exp R.T. : 7.590 min
 Response: 0
 Conc: N.D.



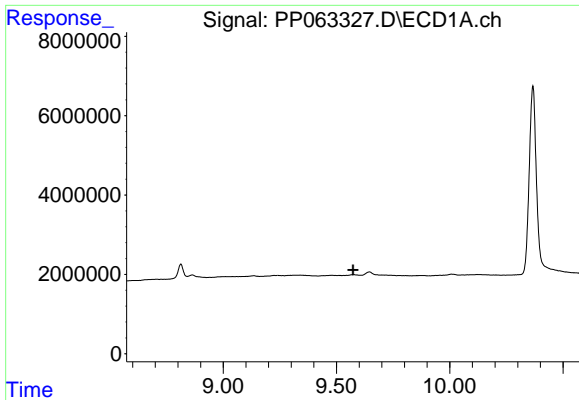
#39 AR-1262-4

R.T.: 8.864 min
 Delta R.T.: -0.027 min
 Response: 1958780
 Conc: 14.50 ng/ml



#39 AR-1262-4

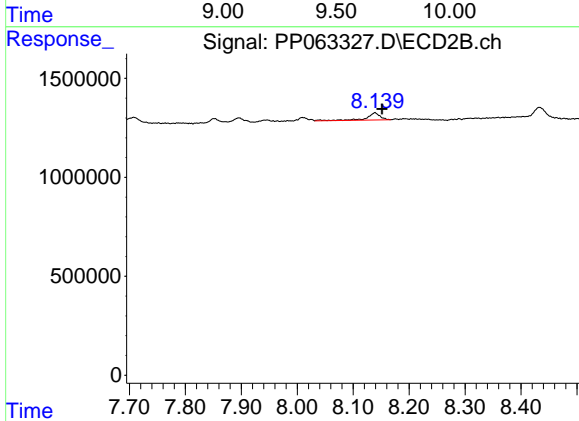
R.T.: 7.640 min
 Delta R.T.: -0.014 min
 Response: 8099122
 Conc: 38.43 ng/ml



#40 AR-1262-5

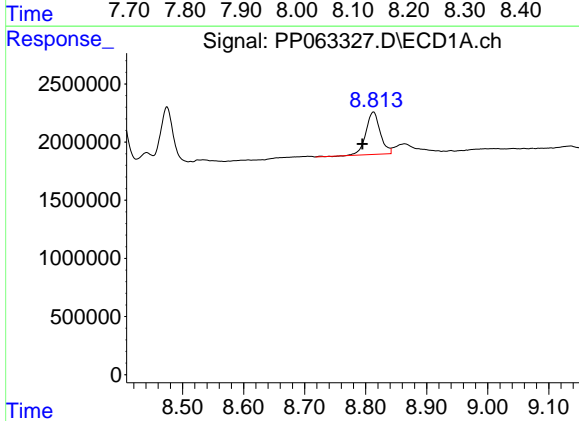
R.T.: 0.000 min
 Exp R.T.: 9.573 min
 Response: 0
 Conc: N.D.

Instrument :
 ECD_P
 ClientSampleId :
 EDGEMERE



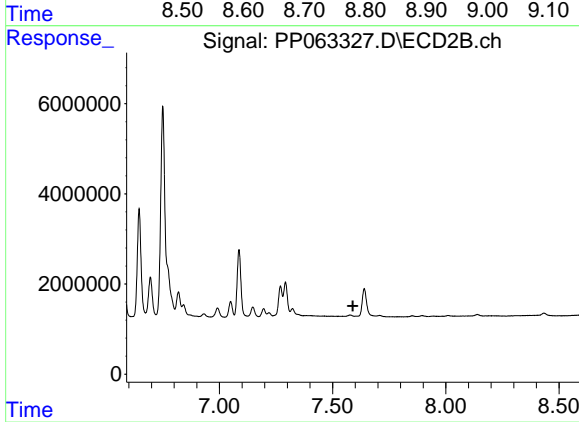
#40 AR-1262-5

R.T.: 8.139 min
 Delta R.T.: -0.013 min
 Response: 591812
 Conc: 7.25 ng/ml



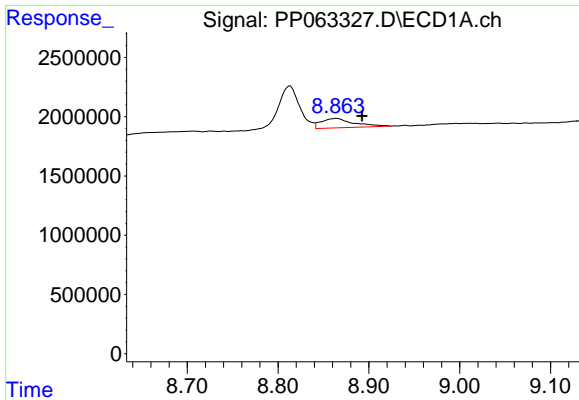
#41 AR-1268-1

R.T.: 8.813 min
 Delta R.T.: 0.018 min
 Response: 5957682
 Conc: 20.46 ng/ml



#41 AR-1268-1

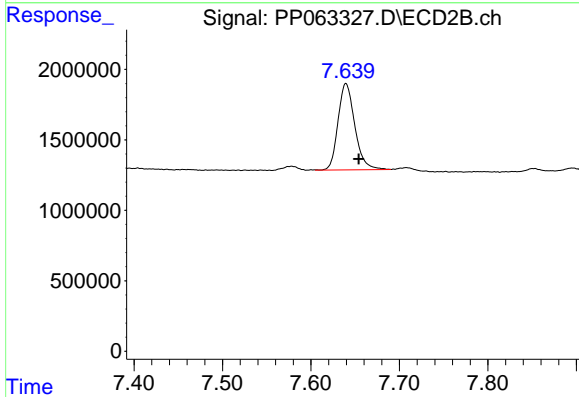
R.T.: 0.000 min
 Exp R.T.: 7.590 min
 Response: 0
 Conc: N.D.



#42 AR-1268-2

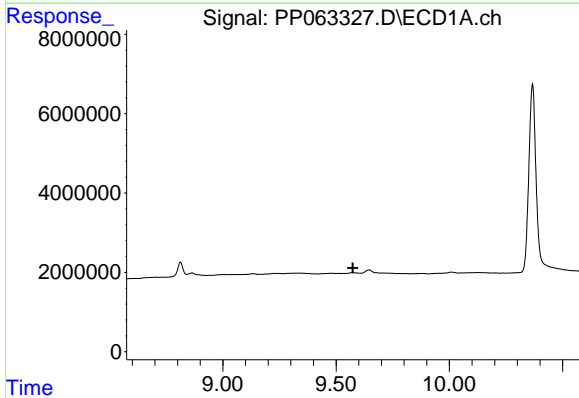
R.T.: 8.864 min
 Delta R.T.: -0.029 min
 Response: 1958780
 Conc: 7.76 ng/ml

Instrument :
 ECD_P
 ClientSampleId :
 EDGEMERE



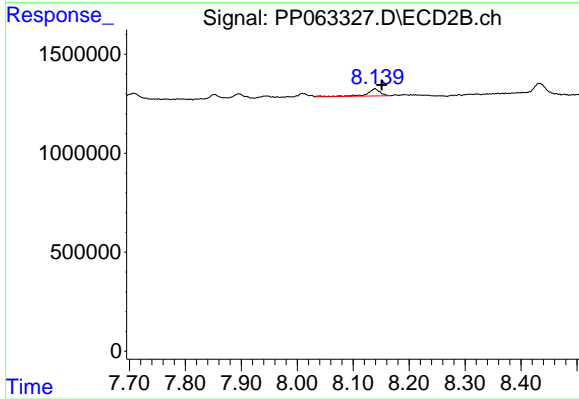
#42 AR-1268-2

R.T.: 7.640 min
 Delta R.T.: -0.014 min
 Response: 8099122
 Conc: 27.10 ng/ml



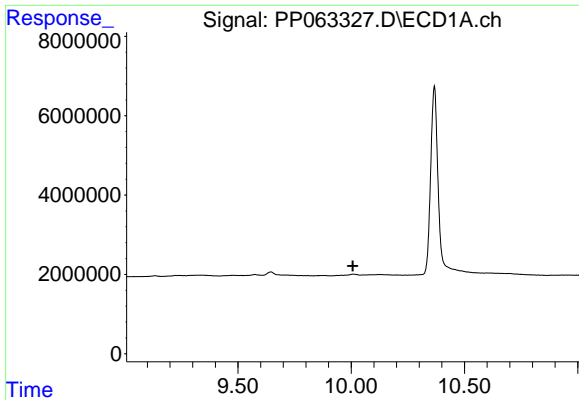
#44 AR-1268-4

R.T.: 0.000 min
 Exp R.T. : 9.574 min
 Response: 0
 Conc: N.D.



#44 AR-1268-4

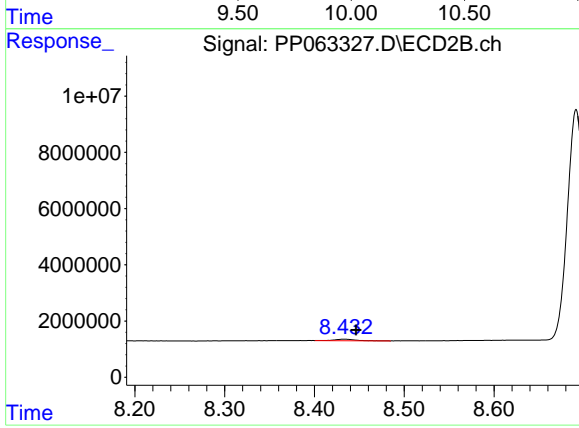
R.T.: 8.139 min
 Delta R.T.: -0.012 min
 Response: 591812
 Conc: 6.74 ng/ml



#45 AR-1268-5

R.T.: 0.000 min
 Exp R.T.: 10.007 min
 Response: 0
 Conc: N.D.

Instrument :
 ECD_P
 ClientSampleId :
 EDGEMERE



#45 AR-1268-5

R.T.: 8.433 min
 Delta R.T.: -0.013 min
 Response: 816696
 Conc: 0.97 ng/ml