

Data Path : Z:\pestpcbsrv\HPCHEM1\ECD\_P\Data\PP022323\  
 Data File : PP055887.D  
 Signal(s) : Signal #1: ECD1A.ch Signal #2: ECD2B.ch  
 Acq On : 23 Feb 2023 23:02  
 Operator : YP\AJ  
 Sample : 01655-04  
 Misc :  
 ALS Vial : 34 Sample Multiplier: 1

Instrument :  
 ECD\_P  
 ClientSampleId :  
 COMP-2

Integration File signal 1: autoint1.e  
 Integration File signal 2: autoint2.e  
 Quant Time: Feb 23 23:27:59 2023  
 Quant Method : Z:\pestpcbsrv\HPCHEM1\ECD\_P\methods\PP021723.M  
 Quant Title : GC EXTRACTABLES  
 QLast Update : Mon Feb 20 05:24:03 2023  
 Response via : Initial Calibration  
 Integrator: ChemStation

Volume Inj. : 2 µl  
 Signal #1 Phase : ZB-MR1 Signal #2 Phase: ZB-MR2  
 Signal #1 Info : 30Mx0.32mmx 0.50µ Signal #2 Info : 30M x 0.32mm x 0.25µm

Compound	RT#1	RT#2	Resp#1	Resp#2	ng/ml	ng/ml
-----						
System Monitoring Compounds						
1) SA Tetrachlo...	4.324	3.568	34980474	26887804	21.710	18.414
2) SA Decachlor...	10.072	8.571	30717113	18453147	15.058	16.266

Target Compounds

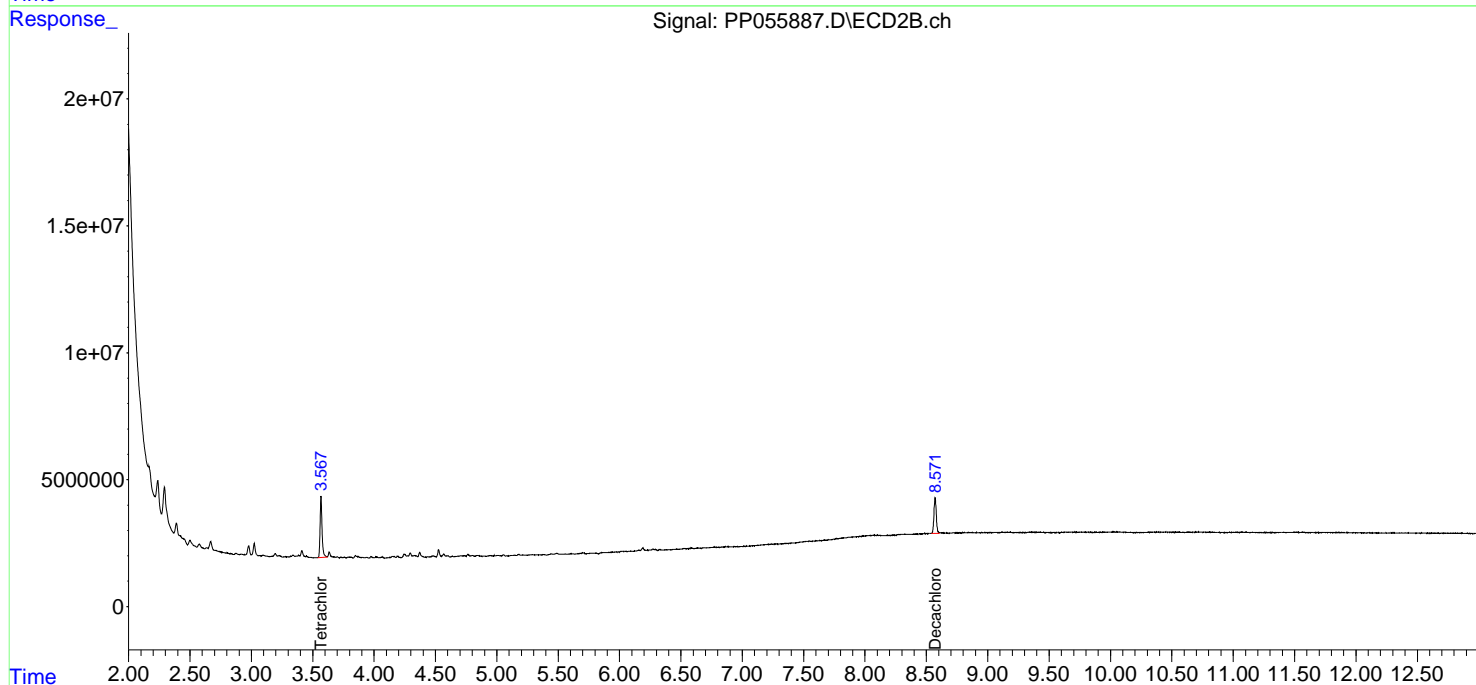
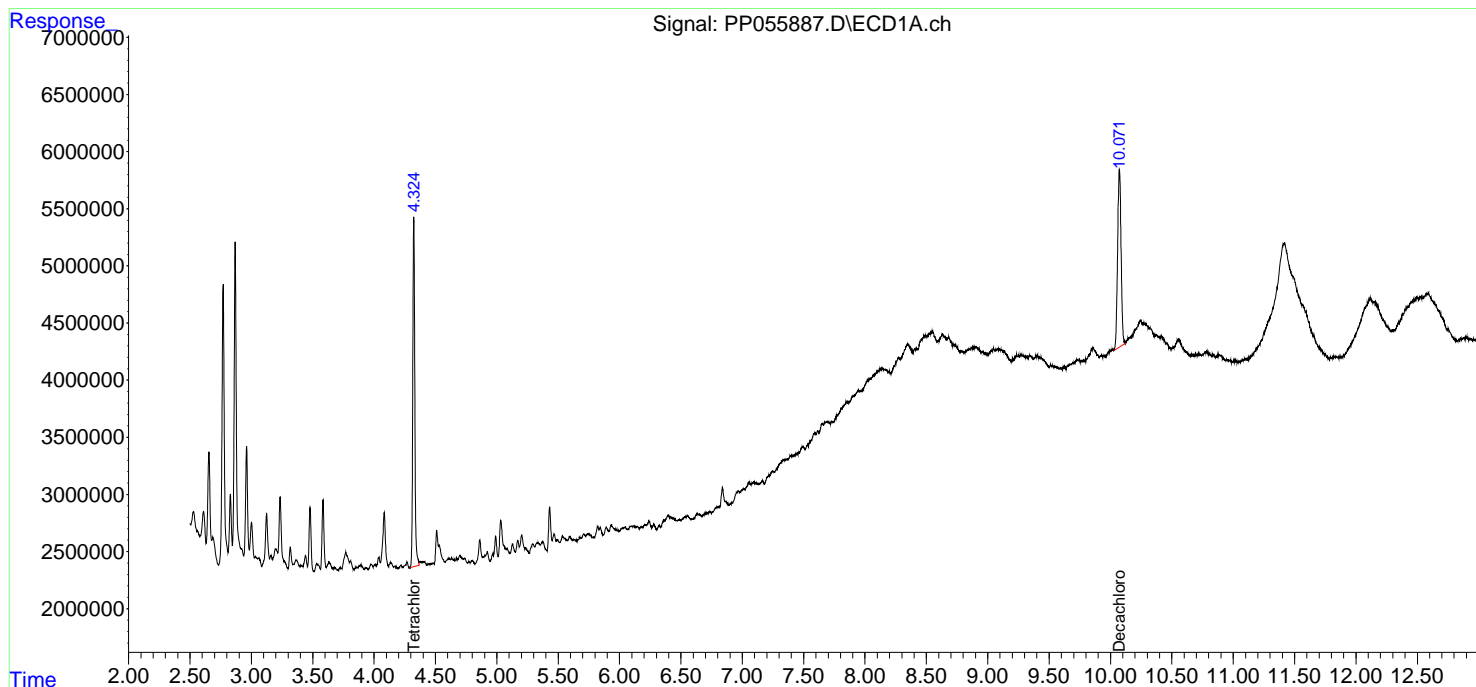
(f)=RT Delta > 1/2 Window (#)=Amounts differ by > 25% (m)=manual int.

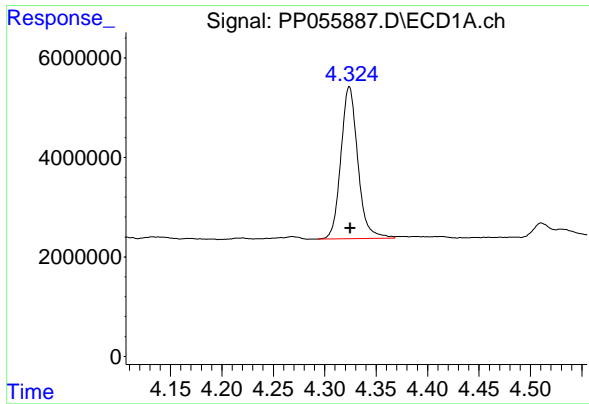
Data Path : Z:\pestpcbsrv\HPCHEM1\ECD\_P\Data\PP022323\  
 Data File : PP055887.D  
 Signal(s) : Signal #1: ECD1A.ch Signal #2: ECD2B.ch  
 Acq On : 23 Feb 2023 23:02  
 Operator : YP\AJ  
 Sample : 01655-04  
 Misc :  
 ALS Vial : 34 Sample Multiplier: 1

Instrument :  
 ECD\_P  
 ClientSampleId :  
 COMP-2

Integration File signal 1: autoint1.e  
 Integration File signal 2: autoint2.e  
 Quant Time: Feb 23 23:27:59 2023  
 Quant Method : Z:\pestpcbsrv\HPCHEM1\ECD\_P\methods\PP021723.M  
 Quant Title : GC EXTRACTABLES  
 QLast Update : Mon Feb 20 05:24:03 2023  
 Response via : Initial Calibration  
 Integrator: ChemStation

Volume Inj. : 2 µl  
 Signal #1 Phase : ZB-MR1 Signal #2 Phase: ZB-MR2  
 Signal #1 Info : 30Mx0.32mmx 0.50µm Signal #2 Info : 30M x 0.32mm x 0.25µm

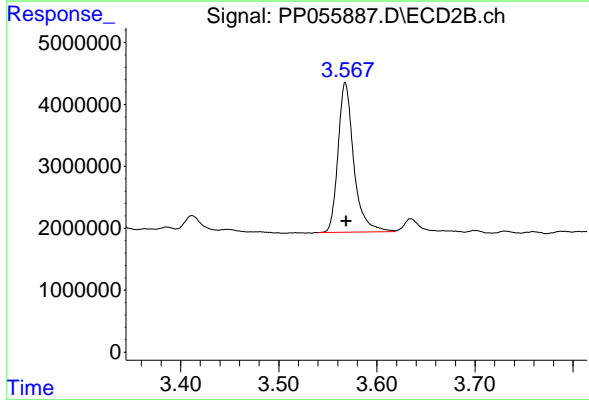




#1 Tetrachloro-m-xylene

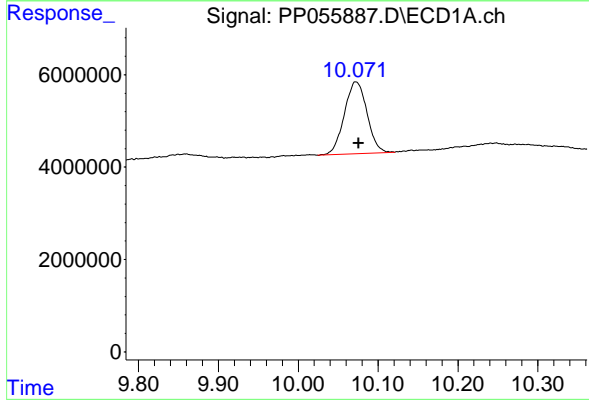
R.T.: 4.324 min  
 Delta R.T.: 0.000 min  
 Response: 34980474  
 Conc: 21.71 ng/ml

Instrument :  
 ECD\_P  
 ClientSampleId :  
 COMP-2



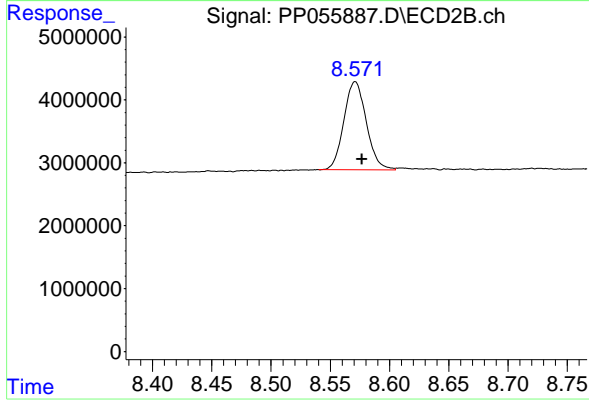
#1 Tetrachloro-m-xylene

R.T.: 3.568 min  
 Delta R.T.: 0.000 min  
 Response: 26887804  
 Conc: 18.41 ng/ml



#2 Decachlorobiphenyl

R.T.: 10.072 min  
 Delta R.T.: -0.004 min  
 Response: 30717113  
 Conc: 15.06 ng/ml



#2 Decachlorobiphenyl

R.T.: 8.571 min  
 Delta R.T.: -0.006 min  
 Response: 18453147  
 Conc: 16.27 ng/ml