

Data Path : Z:\pestpcbsrv\HPCHEM1\ECD_P\Data\PP022324\
 Data File : PP063402.D
 Signal(s) : Signal #1: ECD1A.ch Signal #2: ECD2B.ch
 Acq On : 24 Feb 2024 03:23
 Operator : YP\AJ
 Sample : P1572-01
 Misc :
 ALS Vial : 51 Sample Multiplier: 1

Instrument :
 ECD_P
 ClientSampleId :
 VNJ-202

Integration File signal 1: autoint1.e
 Integration File signal 2: autoint2.e
 Quant Time: Feb 24 04:17:52 2024
 Quant Method : Z:\pestpcbsrv\HPCHEM1\ECD_P\methods\PP020124.M
 Quant Title : GC EXTRACTABLES
 QLast Update : Mon Feb 05 12:13:11 2024
 Response via : Initial Calibration
 Integrator: ChemStation

Volume Inj. : 2 µl
 Signal #1 Phase : ZB-MR1 Signal #2 Phase: ZB-MR2
 Signal #1 Info : 30Mx0.32mmx 0.50µ Signal #2 Info : 30M x 0.32mm x 0.25µm

Compound	RT#1	RT#2	Resp#1	Resp#2	ng/ml	ng/ml

System Monitoring Compounds						
1) SA Tetrachlo...	4.491	3.642	51243952	52416308	21.423	22.052
2) SA Decachlor...	10.367	8.691	55236555	56289425	24.562	22.724
Target Compounds						
3) L1 AR-1016-1	5.675	4.736	2616355	2230043	34.768	31.172
4) L1 AR-1016-2	5.697	4.755	4787183	3832666	44.076	37.314
5) L1 AR-1016-3	0.000	4.933	0	1932530	N.D.	34.947 #
6) L1 AR-1016-4	5.859	4.976	1632319	1926430	29.147	38.928 #
7) L1 AR-1016-5	6.157	5.189	2704355	2277444	44.290	36.204
8) L2 AR-1221-1	0.000	3.868	0	534782	N.D.	20.224 #
9) L2 AR-1221-2	0.000	3.943	0	1561292	N.D.	79.044 #
10) L2 AR-1221-3	0.000	4.021	0	247024	N.D.	4.057 #
11) L3 AR-1232-1	0.000	4.021	0	247024	N.D.	4.596 #
12) L3 AR-1232-2	5.404	4.755	2580356	3832666	85.295	79.980
13) L3 AR-1232-3	5.697	4.933	4787183	1932530	93.937	74.397
14) L3 AR-1232-4	5.859	5.016	1632319	2691681	62.125	103.259 #
15) L3 AR-1232-5	5.951	5.189	2640219	2277444	114.521	83.530 #
16) L4 AR-1242-1	5.675	4.736	2616355	2230043	45.950	41.037
17) L4 AR-1242-2	5.697	4.755	4787183	3832666	58.390	49.211
18) L4 AR-1242-3	0.000	4.933	0	1932530	N.D.	45.604 #
19) L4 AR-1242-4	5.859	5.016	1632319	2691681	38.015	57.634 #
20) L4 AR-1242-5	6.604	5.544	2088259	2867990	46.825	55.417
21) L5 AR-1248-1	5.675	4.736	2616355	2230043	58.993	53.829
22) L5 AR-1248-2	5.951	4.976	2640219	1926430	36.750	29.118
23) L5 AR-1248-3	6.157	5.016	2704355	2691681	34.802	38.423
24) L5 AR-1248-4	6.564	5.189	1461757	2277444	19.615	28.500 #
25) L5 AR-1248-5	6.604	5.585	2088259	1942158	26.844	28.307
26) L6 AR-1254-1	6.538	5.544	1783564	2867990	19.987	23.713
27) L6 AR-1254-2	6.761	5.693	2628621	1141991	19.933	10.565 #
28) L6 AR-1254-3	7.130	6.099	2821423	3005515	20.524	17.771
29) L6 AR-1254-4	0.000	6.329	0	747428	N.D.	9.366 #
30) L6 AR-1254-5	7.839	6.750	2339643	1917247	22.727	13.609 #
31) L7 AR-1260-1	0.000	6.231	0	1640687	N.D.	12.378 #
32) L7 AR-1260-2	7.542	6.419	2584601	1107752	20.323	7.500 #
33) L7 AR-1260-3	7.919	6.565	5284849	1768645	51.124	12.199 #
34) L7 AR-1260-4	8.123	7.049	1659218	792901	14.132	6.505 #
35) L7 AR-1260-5	8.475	7.291	920103	1724488	4.688	6.941 #
37) L8 AR-1262-2	8.475	7.049	920103	792901	3.993	4.839
38) L8 AR-1262-3	0.000	7.576	0	275076	N.D.	2.274 #
39) L8 AR-1262-4	0.000	7.641	0	1174708	N.D.	5.574 #
40) L8 AR-1262-5	0.000	8.138	0	445012	N.D.	5.451 #
41) L9 AR-1268-1	0.000	7.576	0	275076	N.D.	0.855 #
42) L9 AR-1268-2	0.000	7.641	0	1174708	N.D.	3.931 #

Data Path : Z:\pestpcbsrv\HPCHEM1\ECD_P\Data\PP022324\
 Data File : PP063402.D
 Signal(s) : Signal #1: ECD1A.ch Signal #2: ECD2B.ch
 Acq On : 24 Feb 2024 03:23
 Operator : YP\AJ
 Sample : P1572-01
 Misc :
 ALS Vial : 51 Sample Multiplier: 1

Instrument :
 ECD_P
ClientSampleId :
 VNJ-202

Integration File signal 1: autoint1.e
 Integration File signal 2: autoint2.e
 Quant Time: Feb 24 04:17:52 2024
 Quant Method : Z:\pestpcbsrv\HPCHEM1\ECD_P\methods\PP020124.M
 Quant Title : GC EXTRACTABLES
 QLast Update : Mon Feb 05 12:13:11 2024
 Response via : Initial Calibration
 Integrator: ChemStation

Volume Inj. : 2 µl
 Signal #1 Phase : ZB-MR1 Signal #2 Phase: ZB-MR2
 Signal #1 Info : 30Mx0.32mmx 0.50µ Signal #2 Info : 30M x 0.32mm x 0.25µm

	Compound	RT#1	RT#2	Resp#1	Resp#2	ng/ml	ng/ml
44)	L9 AR-1268-4	0.000	8.138	0	445012	N.D.	5.069 #
45)	L9 AR-1268-5	0.000	8.432	0	540624	N.D.	0.642 #

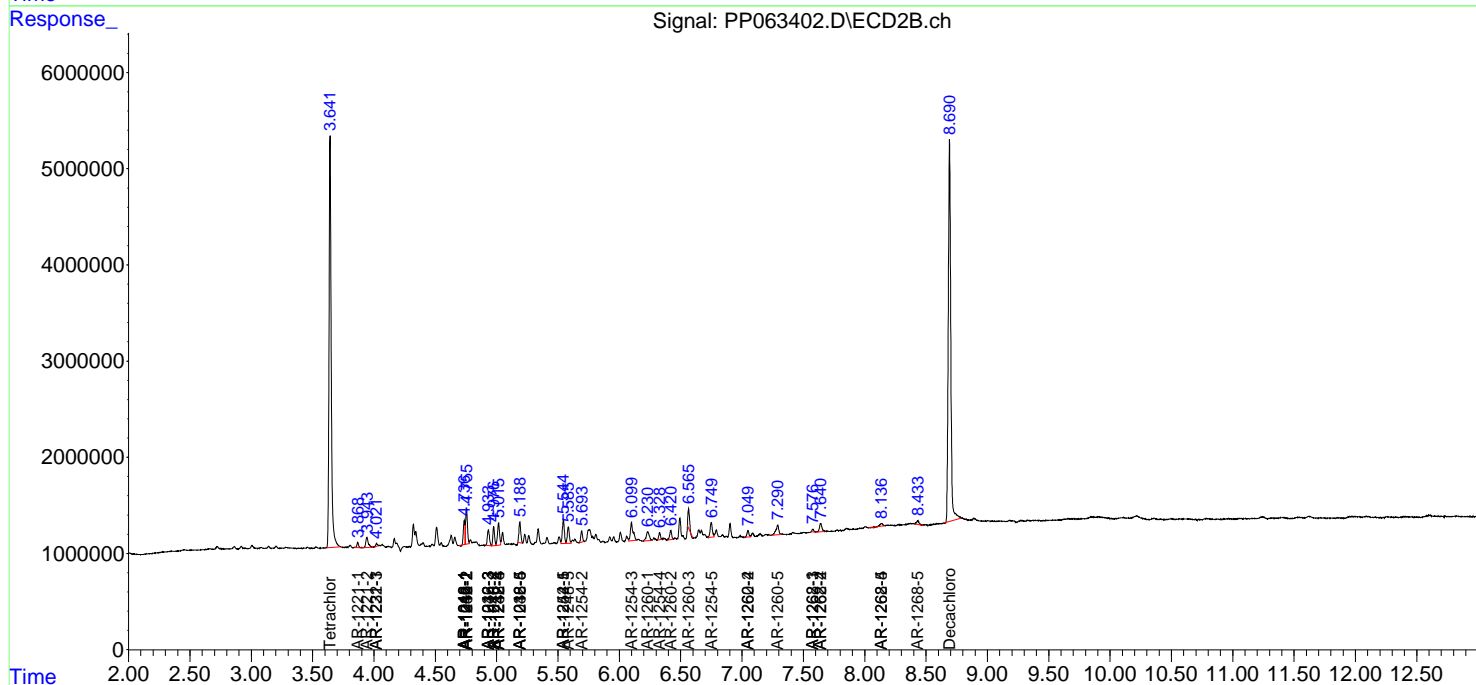
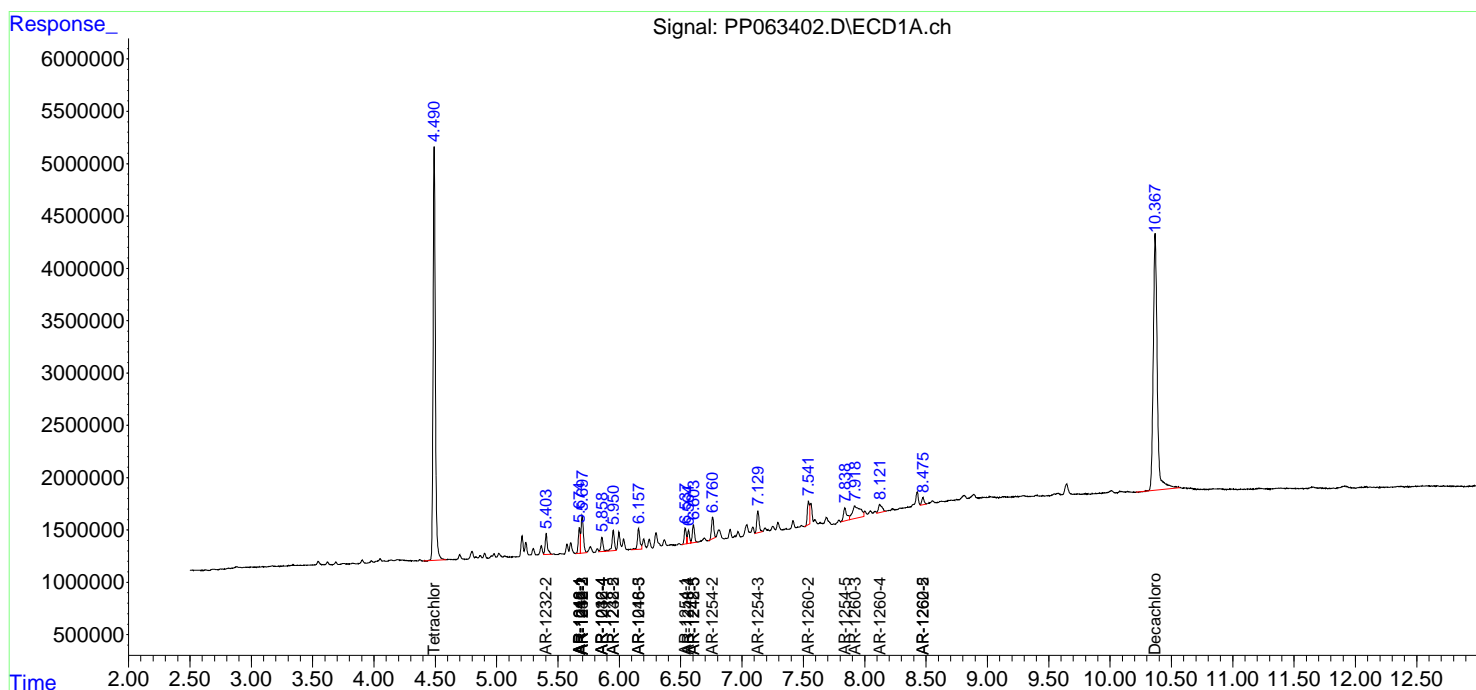
(f)=RT Delta > 1/2 Window (#)=Amounts differ by > 25% (m)=manual int.

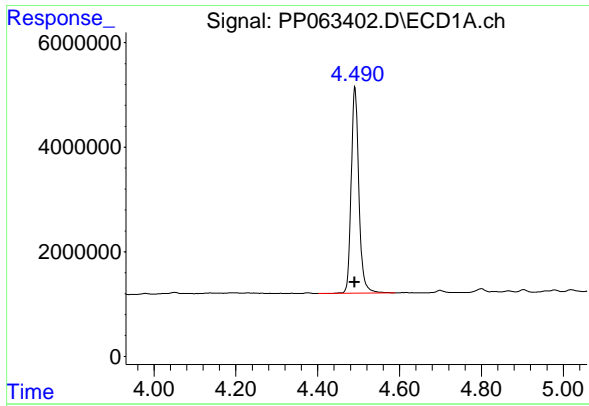
Data Path : Z:\pestpcbsrv\HPCHEM1\ECD_P\Data\PP022324\
 Data File : PP063402.D
 Signal(s) : Signal #1: ECD1A.ch Signal #2: ECD2B.ch
 Acq On : 24 Feb 2024 03:23
 Operator : YP\AJ
 Sample : P1572-01
 Misc :
 ALS Vial : 51 Sample Multiplier: 1

Instrument :
 ECD_P
 ClientSampleId :
 VNJ-202

Integration File signal 1: autoint1.e
 Integration File signal 2: autoint2.e
 Quant Time: Feb 24 04:17:52 2024
 Quant Method : Z:\pestpcbsrv\HPCHEM1\ECD_P\methods\PP020124.M
 Quant Title : GC EXTRACTABLES
 QLast Update : Mon Feb 05 12:13:11 2024
 Response via : Initial Calibration
 Integrator: ChemStation

Volume Inj. : 2 µl
 Signal #1 Phase : ZB-MR1 Signal #2 Phase: ZB-MR2
 Signal #1 Info : 30Mx0.32mmx 0.50µm Signal #2 Info : 30M x 0.32mm x 0.25µm

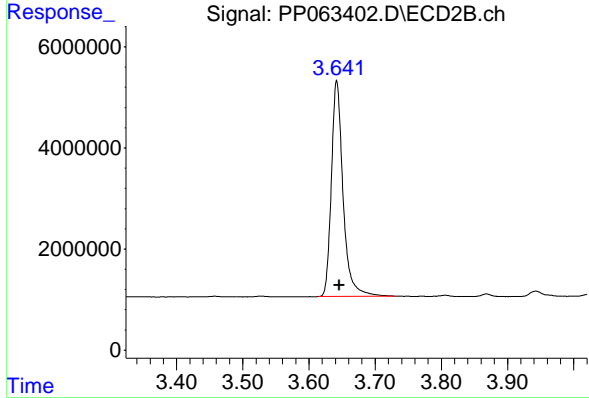




#1 Tetrachloro-m-xylene

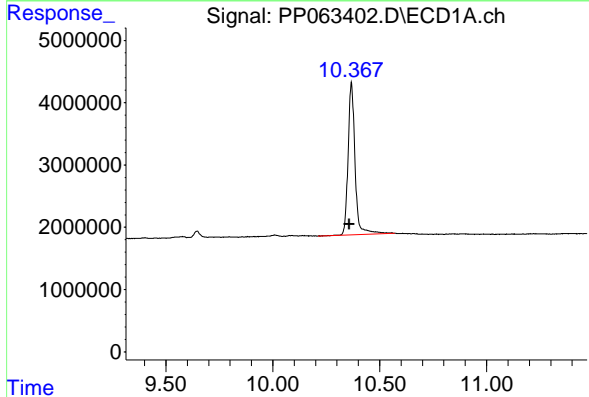
R.T.: 4.491 min
 Delta R.T.: 0.001 min
 Response: 51243952
 Conc: 21.42 ng/ml

Instrument : ECD_P
 ClientSampleId : VNJ-202



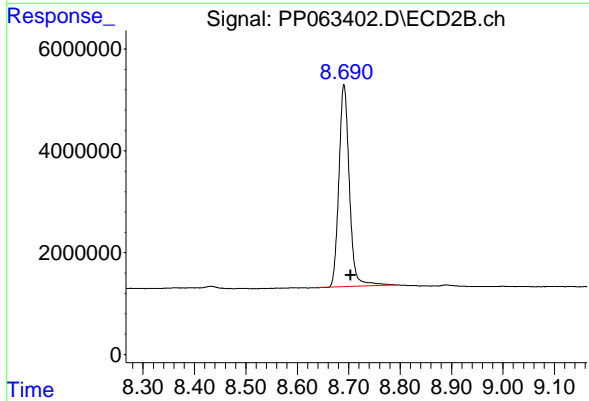
#1 Tetrachloro-m-xylene

R.T.: 3.642 min
 Delta R.T.: -0.004 min
 Response: 52416308
 Conc: 22.05 ng/ml



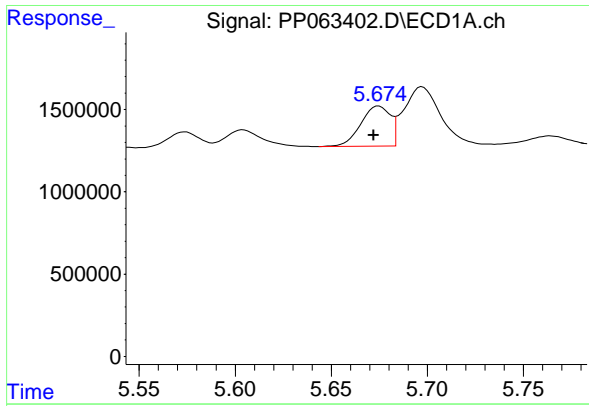
#2 Decachlorobiphenyl

R.T.: 10.367 min
 Delta R.T.: 0.008 min
 Response: 55236555
 Conc: 24.56 ng/ml



#2 Decachlorobiphenyl

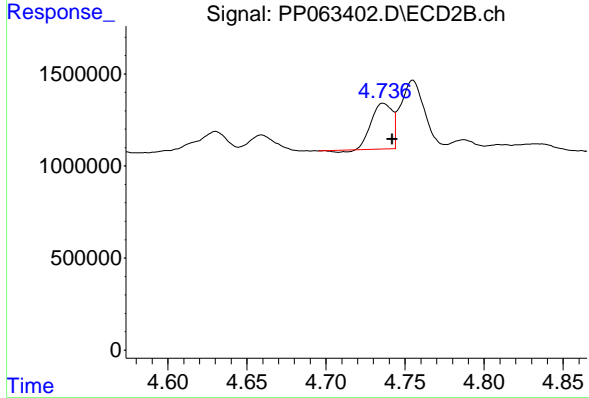
R.T.: 8.691 min
 Delta R.T.: -0.013 min
 Response: 56289425
 Conc: 22.72 ng/ml



#3 AR-1016-1

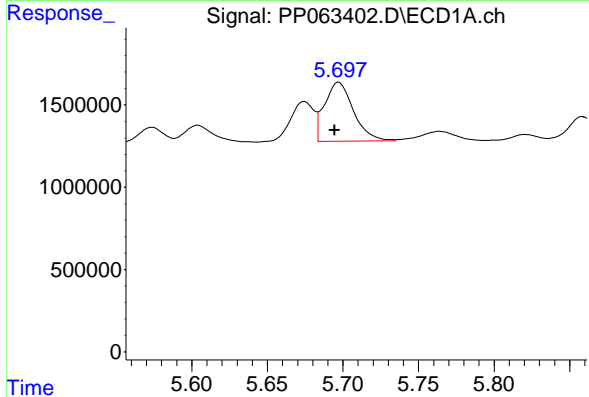
R.T.: 5.675 min
 Delta R.T.: 0.003 min
 Response: 2616355
 Conc: 34.77 ng/ml

Instrument : ECD_P
 ClientSampleId : VNJ-202



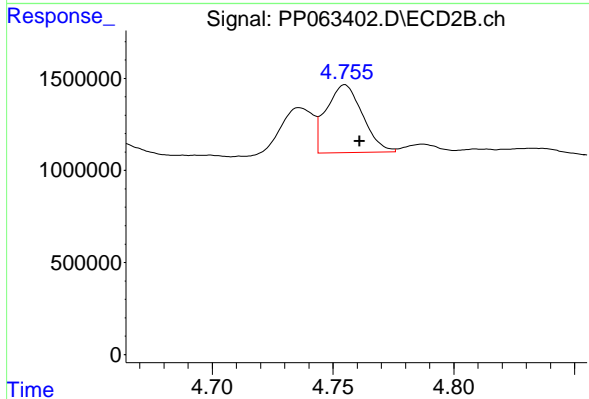
#3 AR-1016-1

R.T.: 4.736 min
 Delta R.T.: -0.006 min
 Response: 2230043
 Conc: 31.17 ng/ml



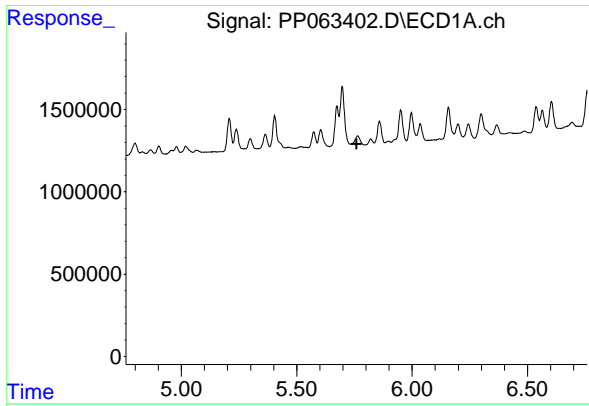
#4 AR-1016-2

R.T.: 5.697 min
 Delta R.T.: 0.003 min
 Response: 4787183
 Conc: 44.08 ng/ml



#4 AR-1016-2

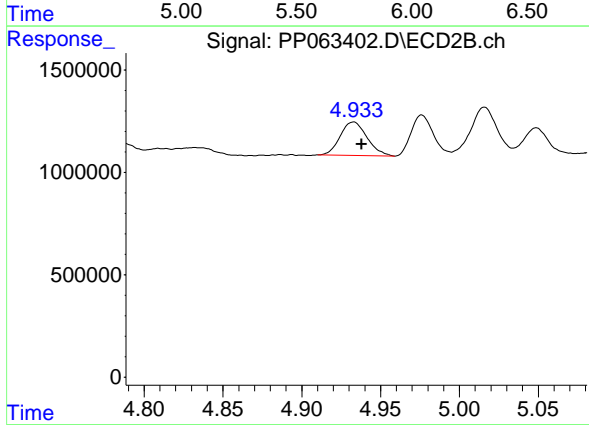
R.T.: 4.755 min
 Delta R.T.: -0.006 min
 Response: 3832666
 Conc: 37.31 ng/ml



#5 AR-1016-3

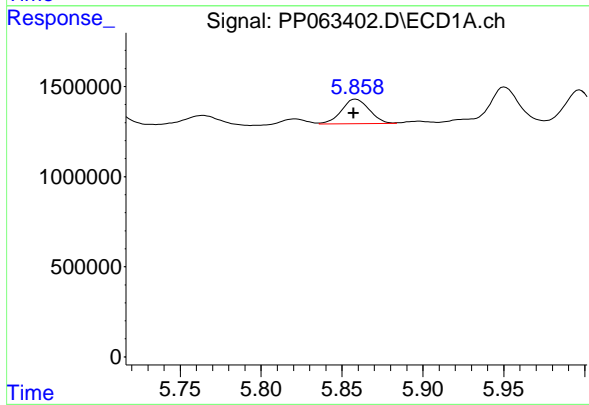
R.T.: 0.000 min
 Exp R.T.: 5.758 min
 Response: 0
 Conc: N.D.

Instrument : ECD_P
 ClientSampleId : VNJ-202



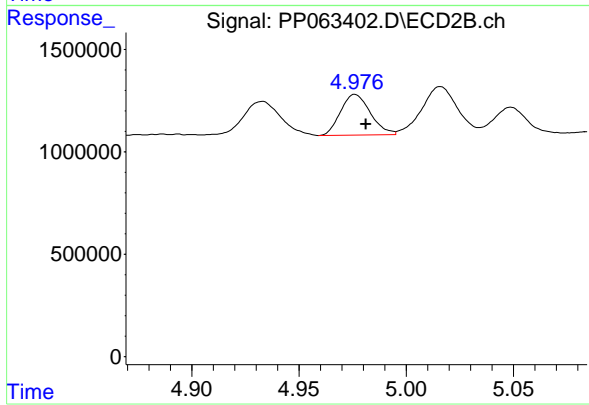
#5 AR-1016-3

R.T.: 4.933 min
 Delta R.T.: -0.005 min
 Response: 1932530
 Conc: 34.95 ng/ml



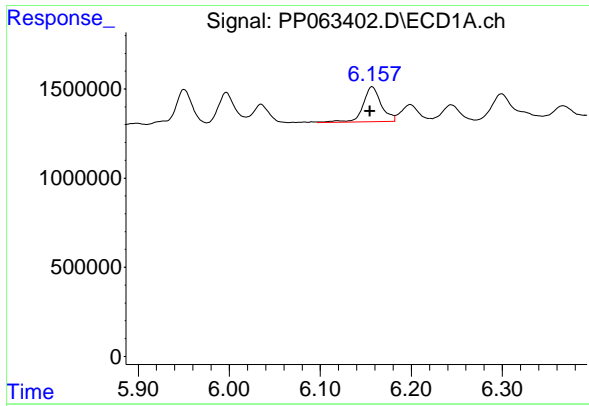
#6 AR-1016-4

R.T.: 5.859 min
 Delta R.T.: 0.002 min
 Response: 1632319
 Conc: 29.15 ng/ml



#6 AR-1016-4

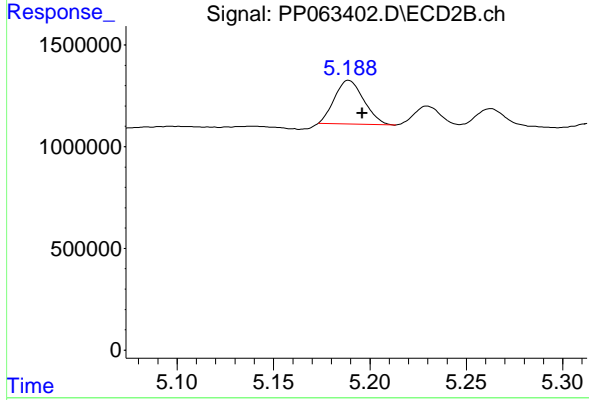
R.T.: 4.976 min
 Delta R.T.: -0.005 min
 Response: 1926430
 Conc: 38.93 ng/ml



#7 AR-1016-5

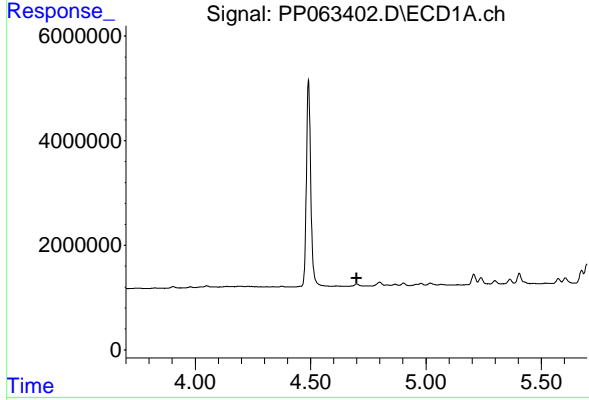
R.T.: 6.157 min
 Delta R.T.: 0.003 min
 Response: 2704355
 Conc: 44.29 ng/ml

Instrument :
 ECD_P
 ClientSampleId :
 VNJ-202



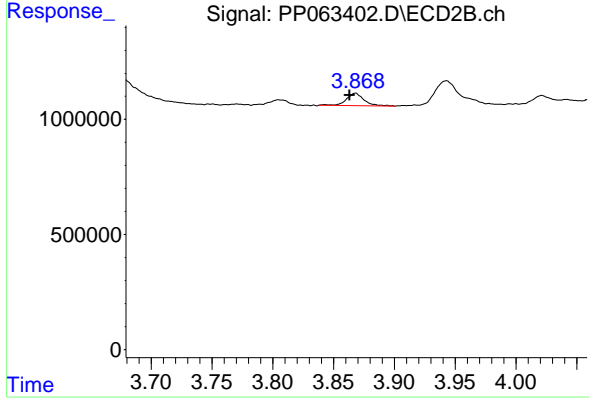
#7 AR-1016-5

R.T.: 5.189 min
 Delta R.T.: -0.007 min
 Response: 2277444
 Conc: 36.20 ng/ml



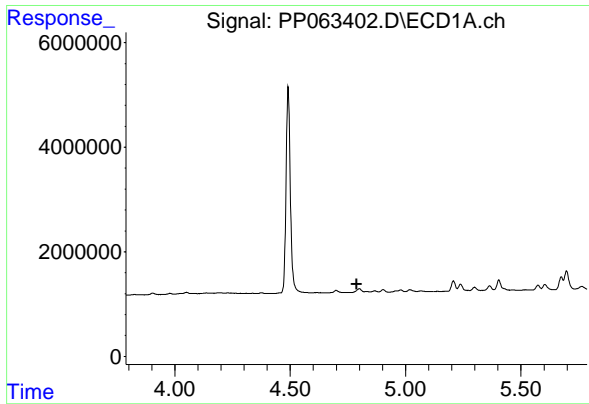
#8 AR-1221-1

R.T.: 0.000 min
 Exp R.T. : 4.699 min
 Response: 0
 Conc: N.D.



#8 AR-1221-1

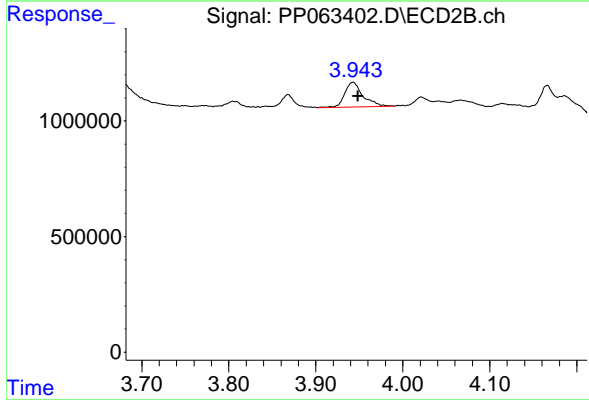
R.T.: 3.868 min
 Delta R.T.: 0.005 min
 Response: 534782
 Conc: 20.22 ng/ml



#9 AR-1221-2

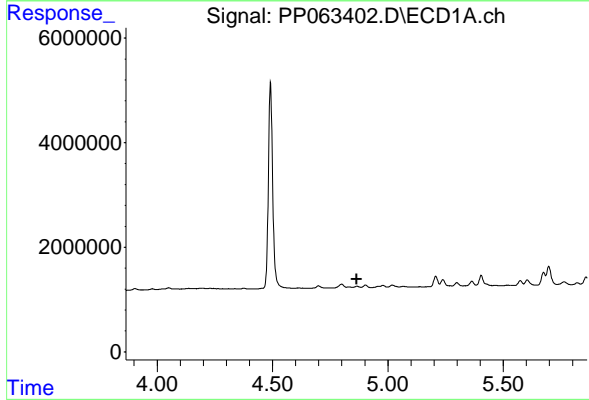
R.T.: 0.000 min
 Exp R.T.: 4.787 min
 Response: 0
 Conc: N.D.

Instrument :
 ECD_P
 ClientSampleId :
 VNJ-202



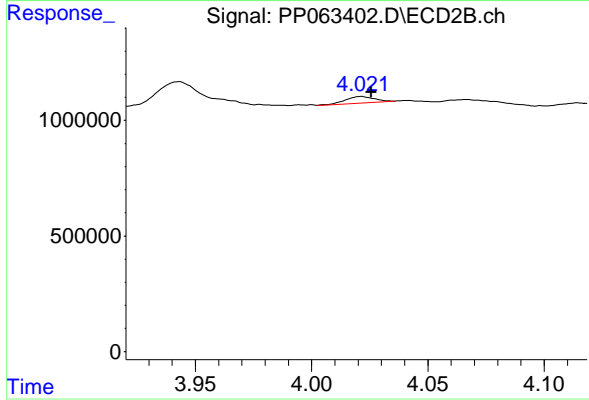
#9 AR-1221-2

R.T.: 3.943 min
 Delta R.T.: -0.006 min
 Response: 1561292
 Conc: 79.04 ng/ml



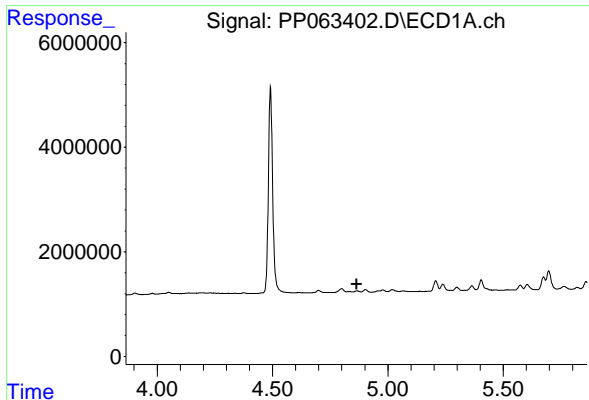
#10 AR-1221-3

R.T.: 0.000 min
 Exp R.T.: 4.864 min
 Response: 0
 Conc: N.D.



#10 AR-1221-3

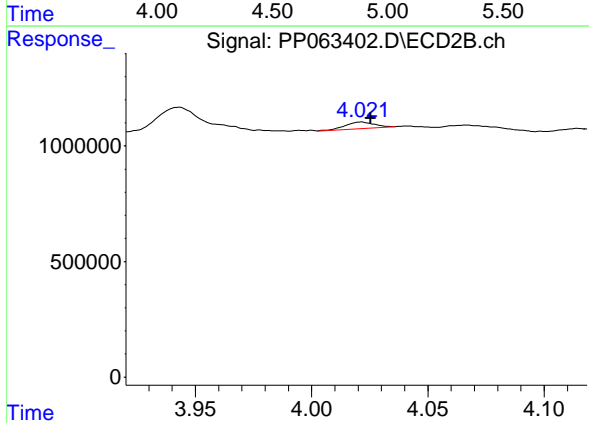
R.T.: 4.021 min
 Delta R.T.: -0.004 min
 Response: 247024
 Conc: 4.06 ng/ml



#11 AR-1232-1

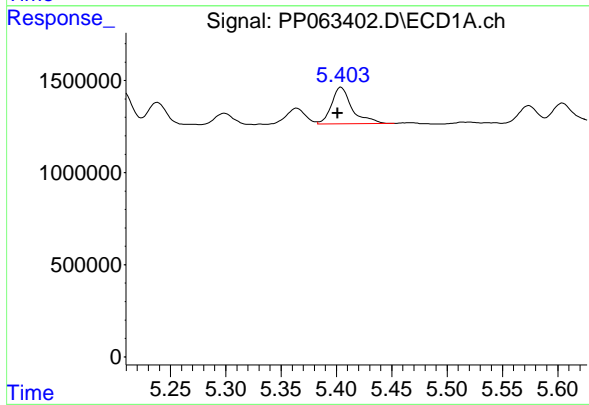
R.T.: 0.000 min
 Exp R.T.: 4.864 min
 Response: 0
 Conc: N.D.

Instrument : ECD_P
 ClientSampleId : VNJ-202



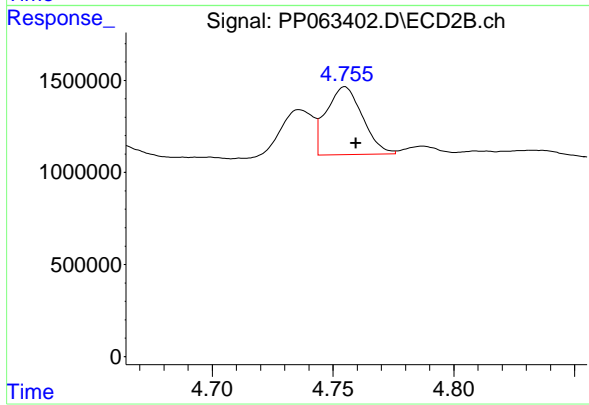
#11 AR-1232-1

R.T.: 4.021 min
 Delta R.T.: -0.004 min
 Response: 247024
 Conc: 4.60 ng/ml



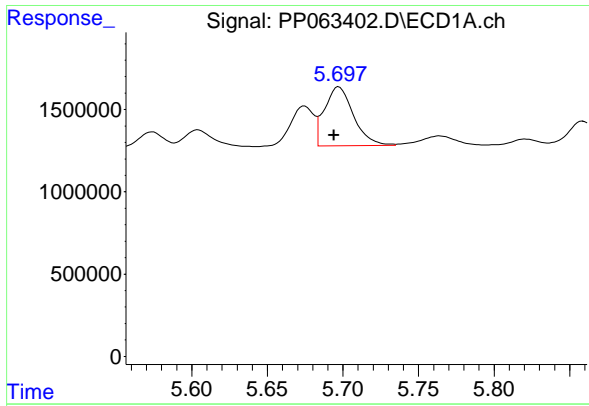
#12 AR-1232-2

R.T.: 5.404 min
 Delta R.T.: 0.003 min
 Response: 2580356
 Conc: 85.30 ng/ml



#12 AR-1232-2

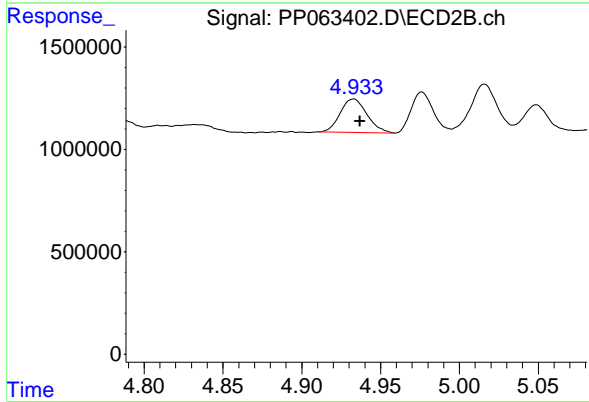
R.T.: 4.755 min
 Delta R.T.: -0.005 min
 Response: 3832666
 Conc: 79.98 ng/ml



#13 AR-1232-3

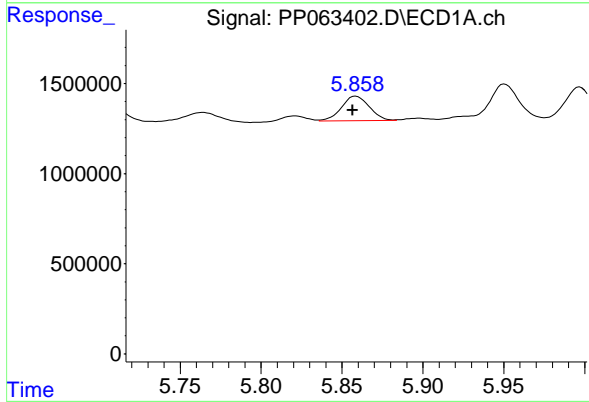
R.T.: 5.697 min
 Delta R.T.: 0.003 min
 Response: 4787183
 Conc: 93.94 ng/ml

Instrument :
 ECD_P
 ClientSampleId :
 VNJ-202



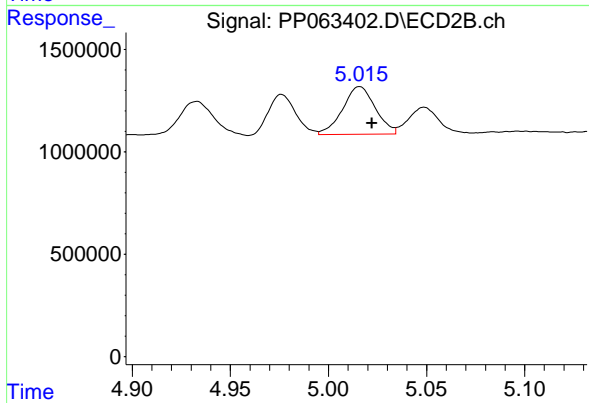
#13 AR-1232-3

R.T.: 4.933 min
 Delta R.T.: -0.004 min
 Response: 1932530
 Conc: 74.40 ng/ml



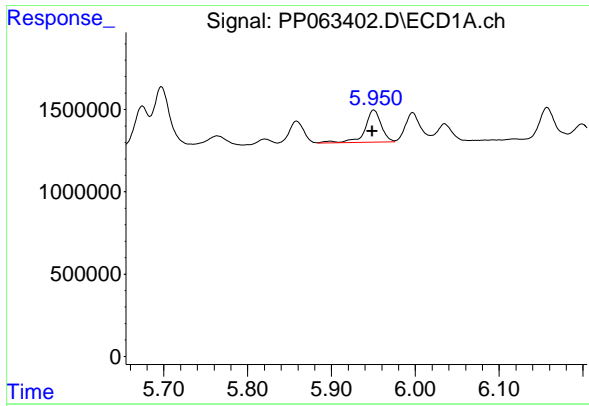
#14 AR-1232-4

R.T.: 5.859 min
 Delta R.T.: 0.002 min
 Response: 1632319
 Conc: 62.13 ng/ml



#14 AR-1232-4

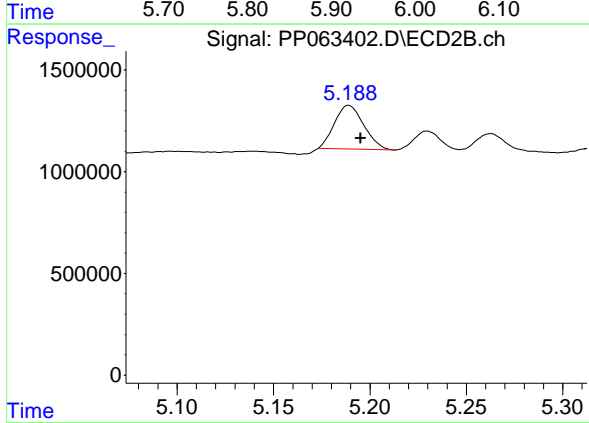
R.T.: 5.016 min
 Delta R.T.: -0.006 min
 Response: 2691681
 Conc: 103.26 ng/ml



#15 AR-1232-5

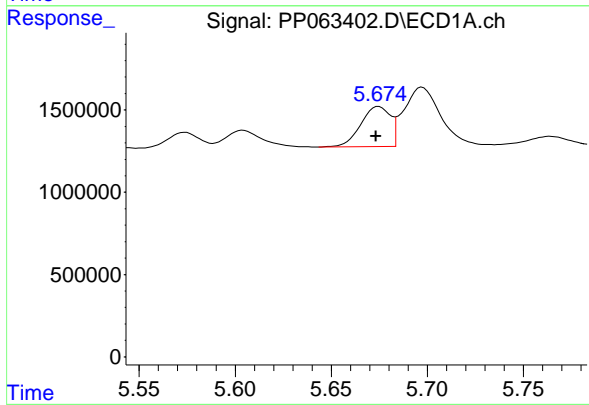
R.T.: 5.951 min
 Delta R.T.: 0.002 min
 Response: 2640219
 Conc: 114.52 ng/ml

Instrument :
 ECD_P
 ClientSampleId :
 VNJ-202



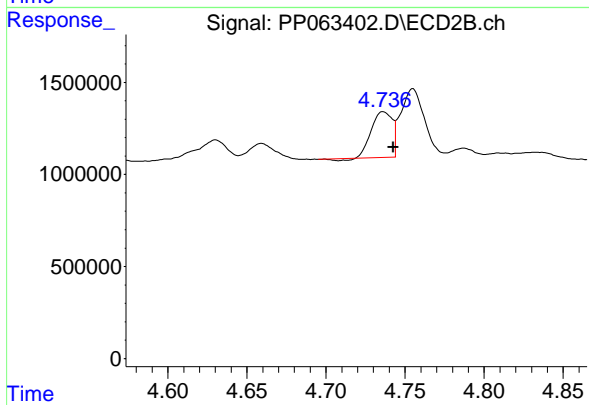
#15 AR-1232-5

R.T.: 5.189 min
 Delta R.T.: -0.006 min
 Response: 2277444
 Conc: 83.53 ng/ml



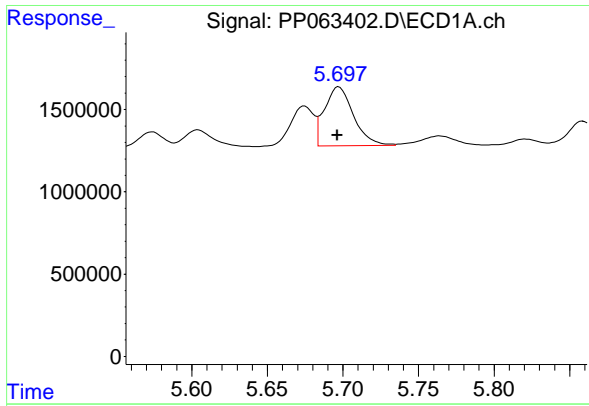
#16 AR-1242-1

R.T.: 5.675 min
 Delta R.T.: 0.001 min
 Response: 2616355
 Conc: 45.95 ng/ml



#16 AR-1242-1

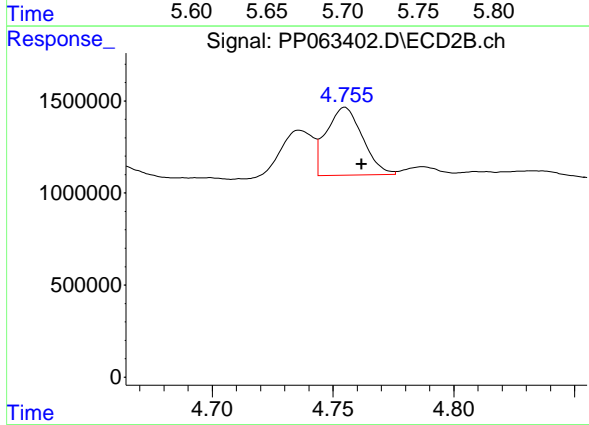
R.T.: 4.736 min
 Delta R.T.: -0.006 min
 Response: 2230043
 Conc: 41.04 ng/ml



#17 AR-1242-2

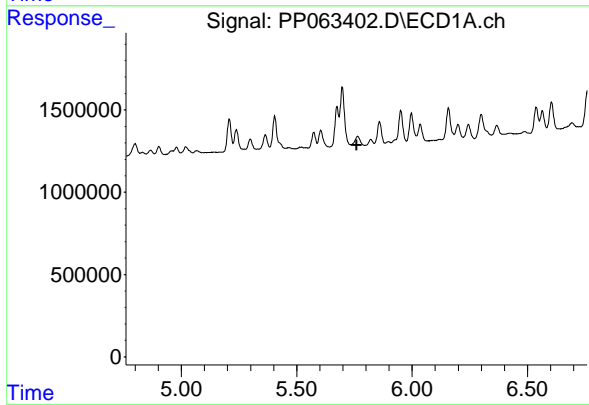
R.T.: 5.697 min
 Delta R.T.: 0.001 min
 Response: 4787183
 Conc: 58.39 ng/ml

Instrument :
 ECD_P
 ClientSampleId :
 VNJ-202



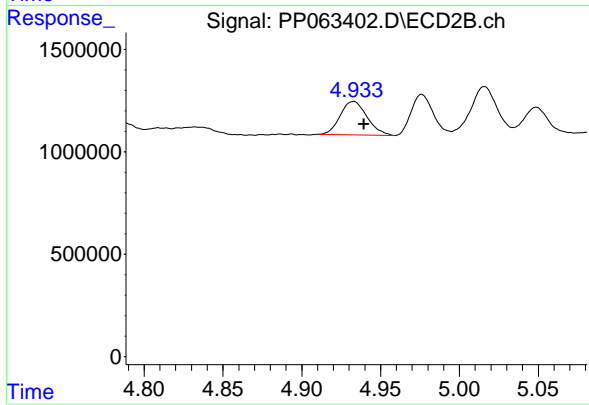
#17 AR-1242-2

R.T.: 4.755 min
 Delta R.T.: -0.007 min
 Response: 3832666
 Conc: 49.21 ng/ml



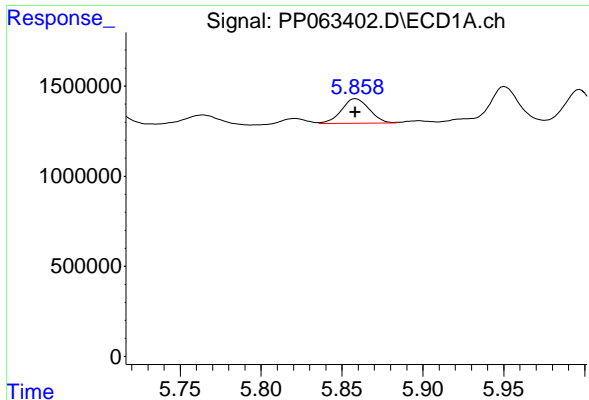
#18 AR-1242-3

R.T.: 0.000 min
 Exp R.T. : 5.758 min
 Response: 0
 Conc: N.D.



#18 AR-1242-3

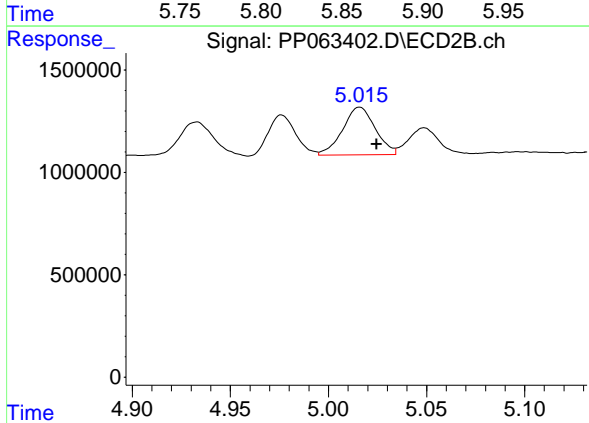
R.T.: 4.933 min
 Delta R.T.: -0.006 min
 Response: 1932530
 Conc: 45.60 ng/ml



#19 AR-1242-4

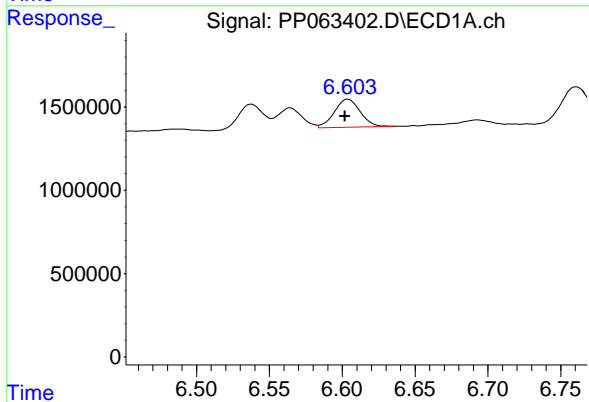
R.T.: 5.859 min
 Delta R.T.: 0.000 min
 Response: 1632319
 Conc: 38.01 ng/ml

Instrument :
 ECD_P
 ClientSampleId :
 VNJ-202



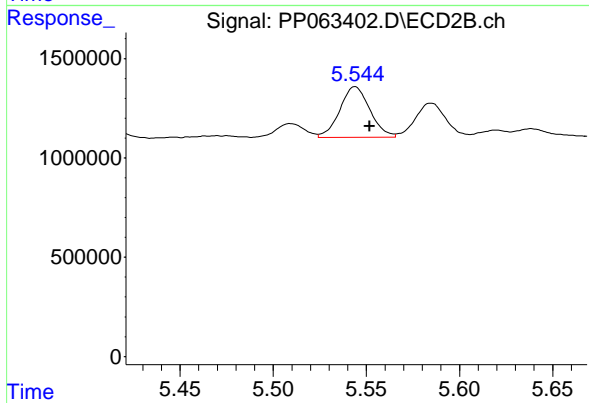
#19 AR-1242-4

R.T.: 5.016 min
 Delta R.T.: -0.009 min
 Response: 2691681
 Conc: 57.63 ng/ml



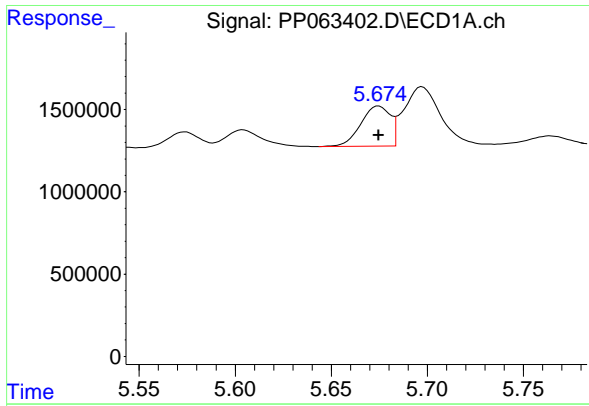
#20 AR-1242-5

R.T.: 6.604 min
 Delta R.T.: 0.002 min
 Response: 2088259
 Conc: 46.83 ng/ml



#20 AR-1242-5

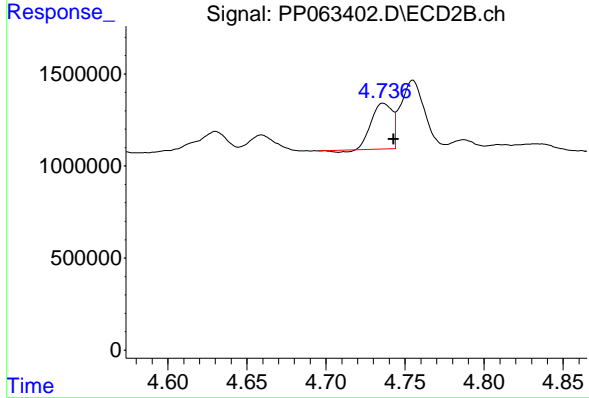
R.T.: 5.544 min
 Delta R.T.: -0.008 min
 Response: 2867990
 Conc: 55.42 ng/ml



#21 AR-1248-1

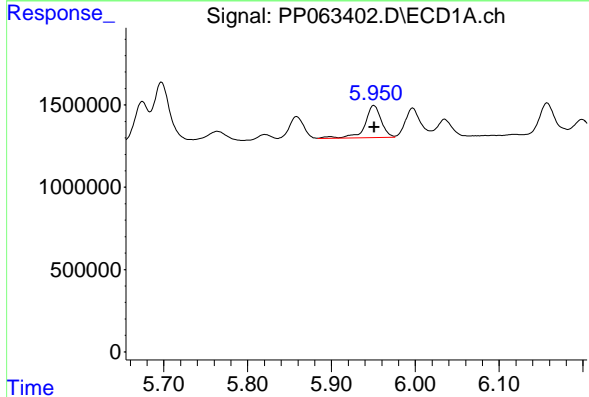
R.T.: 5.675 min
 Delta R.T.: 0.000 min
 Response: 2616355
 Conc: 58.99 ng/ml

Instrument : ECD_P
 ClientSampleId : VNJ-202



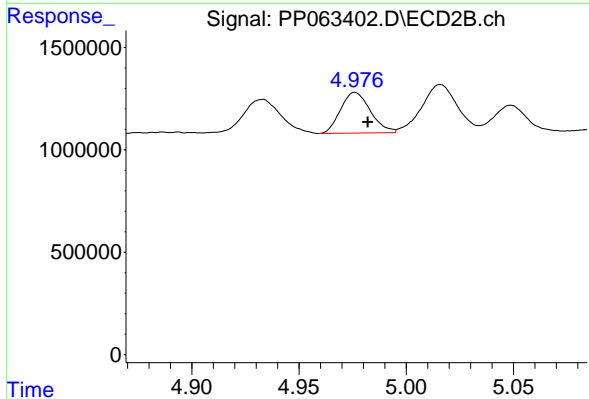
#21 AR-1248-1

R.T.: 4.736 min
 Delta R.T.: -0.006 min
 Response: 2230043
 Conc: 53.83 ng/ml



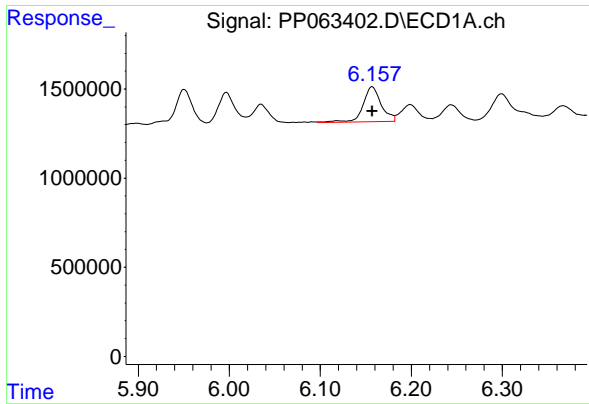
#22 AR-1248-2

R.T.: 5.951 min
 Delta R.T.: 0.000 min
 Response: 2640219
 Conc: 36.75 ng/ml



#22 AR-1248-2

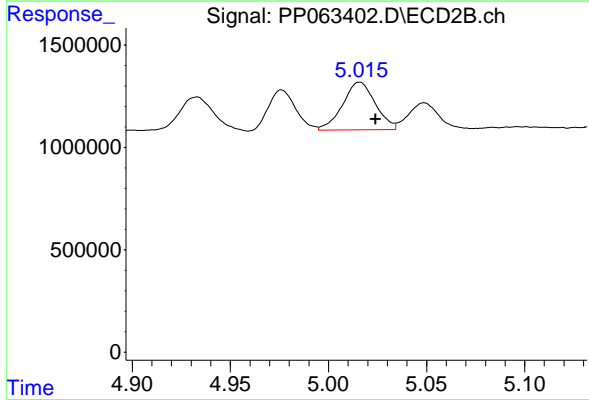
R.T.: 4.976 min
 Delta R.T.: -0.006 min
 Response: 1926430
 Conc: 29.12 ng/ml



#23 AR-1248-3

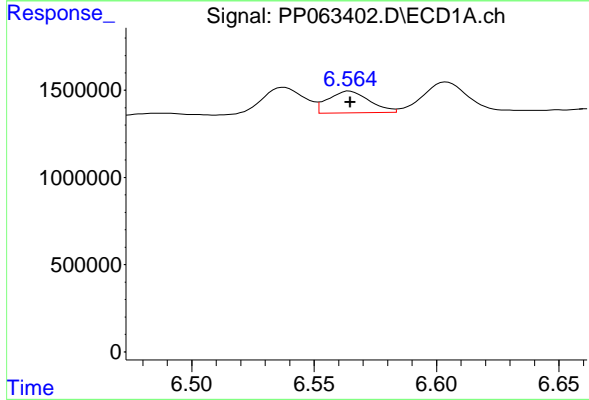
R.T.: 6.157 min
 Delta R.T.: 0.000 min
 Response: 2704355
 Conc: 34.80 ng/ml

Instrument :
 ECD_P
 ClientSampleId :
 VNJ-202



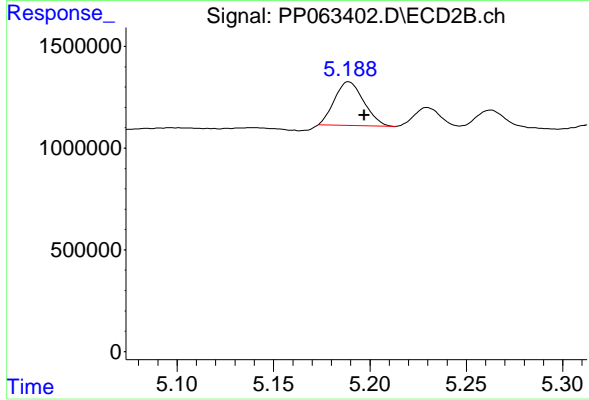
#23 AR-1248-3

R.T.: 5.016 min
 Delta R.T.: -0.008 min
 Response: 2691681
 Conc: 38.42 ng/ml



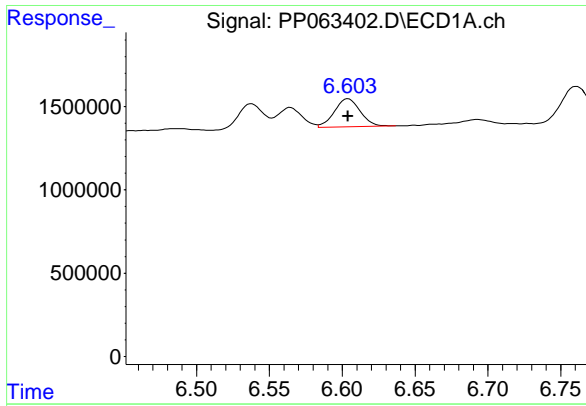
#24 AR-1248-4

R.T.: 6.564 min
 Delta R.T.: 0.000 min
 Response: 1461757
 Conc: 19.61 ng/ml



#24 AR-1248-4

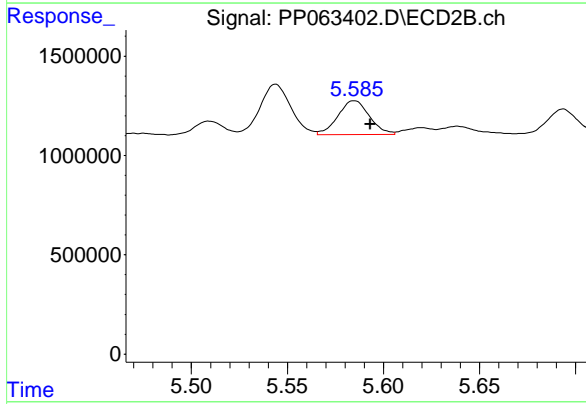
R.T.: 5.189 min
 Delta R.T.: -0.008 min
 Response: 2277444
 Conc: 28.50 ng/ml



#25 AR-1248-5

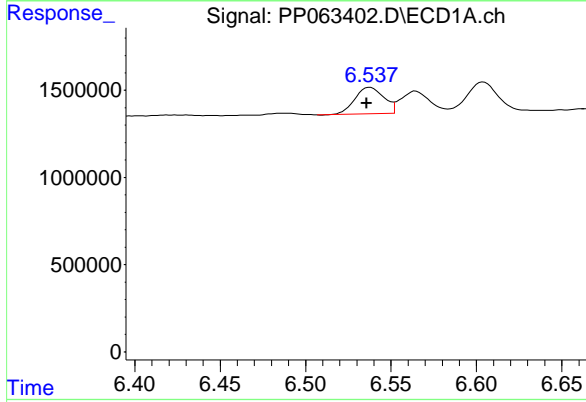
R.T.: 6.604 min
 Delta R.T.: 0.000 min
 Response: 2088259
 Conc: 26.84 ng/ml

Instrument :
 ECD_P
 ClientSampleId :
 VNJ-202



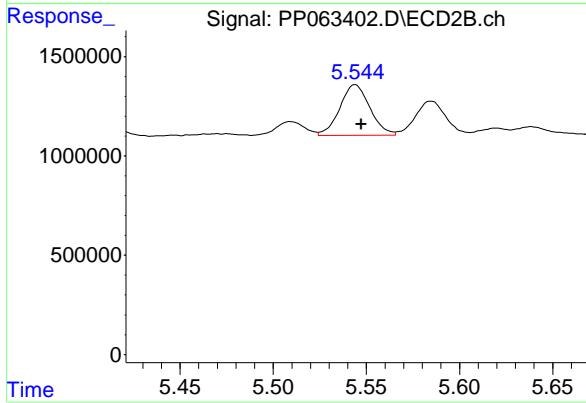
#25 AR-1248-5

R.T.: 5.585 min
 Delta R.T.: -0.008 min
 Response: 1942158
 Conc: 28.31 ng/ml



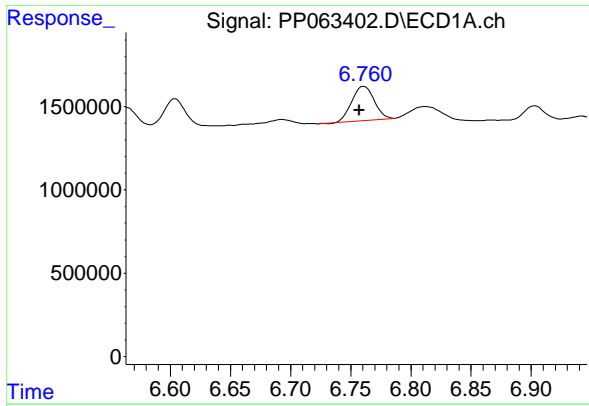
#26 AR-1254-1

R.T.: 6.538 min
 Delta R.T.: 0.002 min
 Response: 1783564
 Conc: 19.99 ng/ml



#26 AR-1254-1

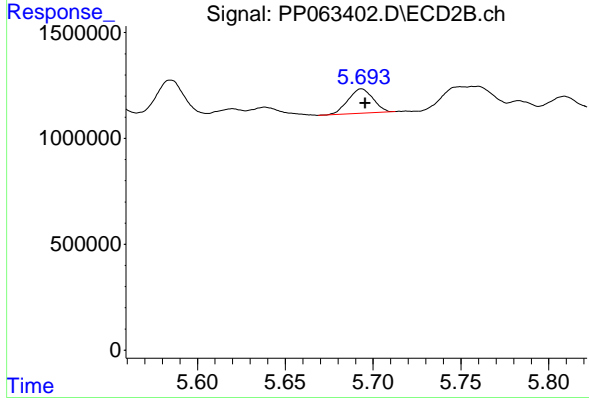
R.T.: 5.544 min
 Delta R.T.: -0.003 min
 Response: 2867990
 Conc: 23.71 ng/ml



#27 AR-1254-2

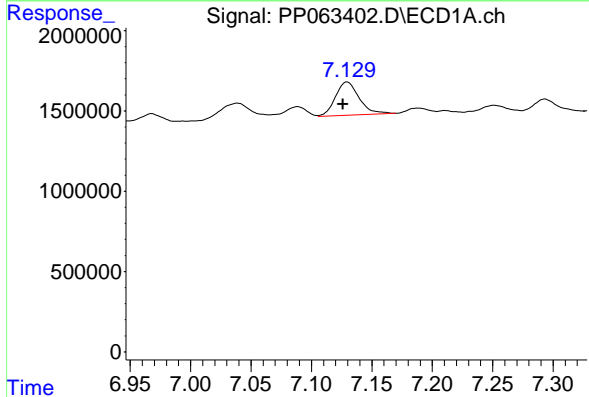
R.T.: 6.761 min
 Delta R.T.: 0.004 min
 Response: 2628621
 Conc: 19.93 ng/ml

Instrument : ECD_P
 ClientSampleId : VNJ-202



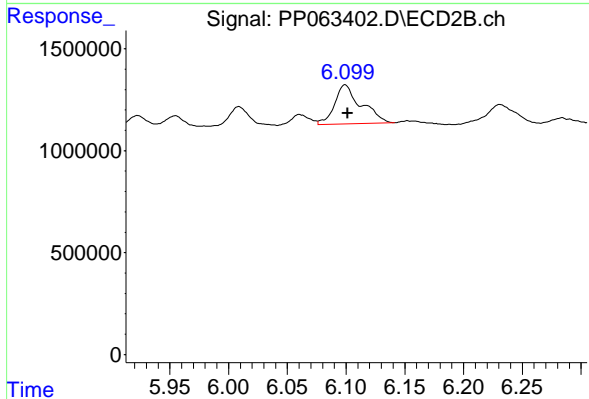
#27 AR-1254-2

R.T.: 5.693 min
 Delta R.T.: -0.002 min
 Response: 1141991
 Conc: 10.56 ng/ml



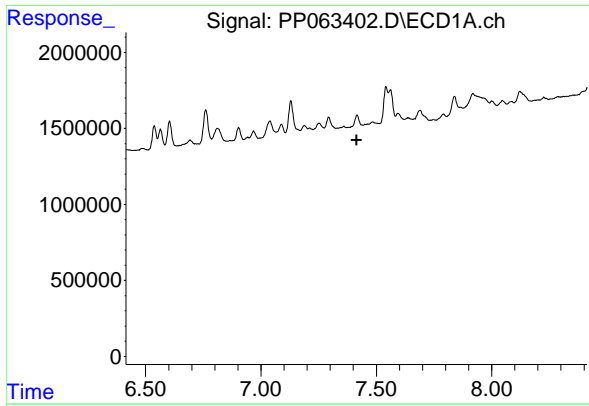
#28 AR-1254-3

R.T.: 7.130 min
 Delta R.T.: 0.004 min
 Response: 2821423
 Conc: 20.52 ng/ml



#28 AR-1254-3

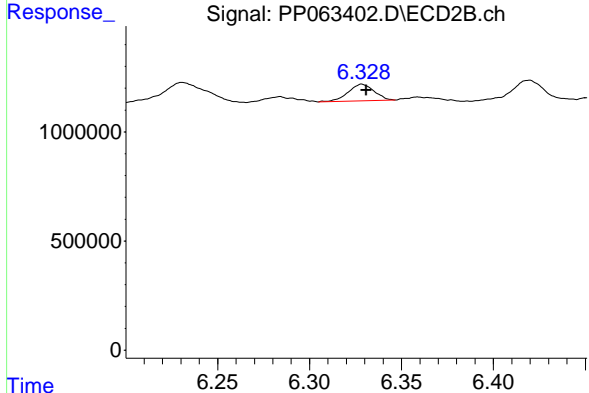
R.T.: 6.099 min
 Delta R.T.: -0.002 min
 Response: 3005515
 Conc: 17.77 ng/ml



#29 AR-1254-4

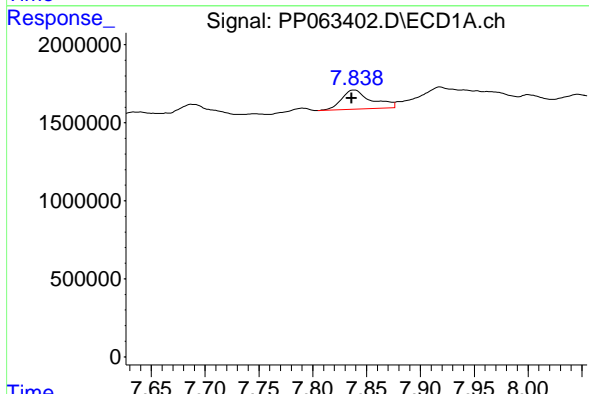
R.T.: 0.000 min
 Exp R.T.: 7.414 min
 Response: 0
 Conc: N.D.

Instrument :
 ECD_P
 ClientSampleId :
 VNJ-202



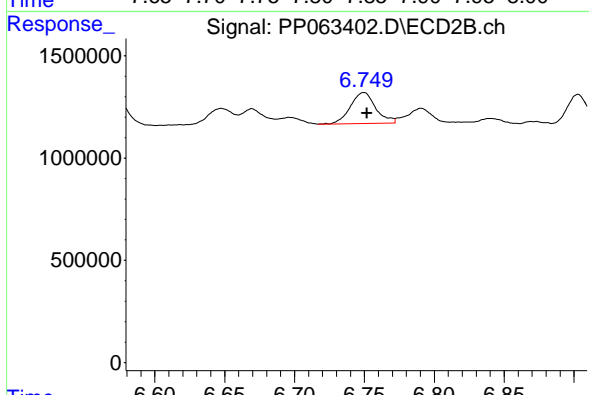
#29 AR-1254-4

R.T.: 6.329 min
 Delta R.T.: -0.002 min
 Response: 747428
 Conc: 9.37 ng/ml



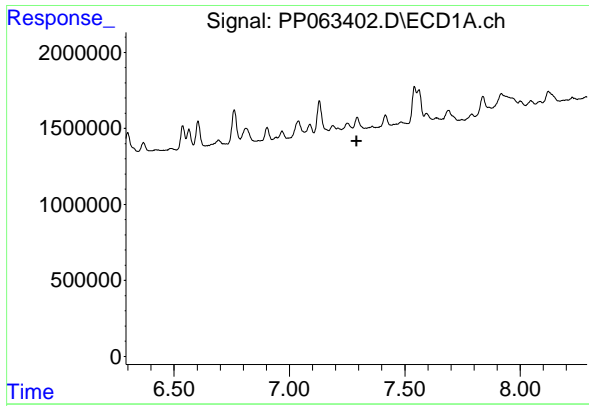
#30 AR-1254-5

R.T.: 7.839 min
 Delta R.T.: 0.002 min
 Response: 2339643
 Conc: 22.73 ng/ml



#30 AR-1254-5

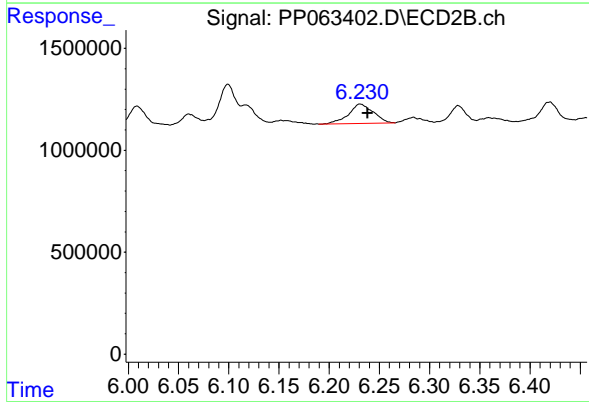
R.T.: 6.750 min
 Delta R.T.: -0.002 min
 Response: 1917247
 Conc: 13.61 ng/ml



#31 AR-1260-1

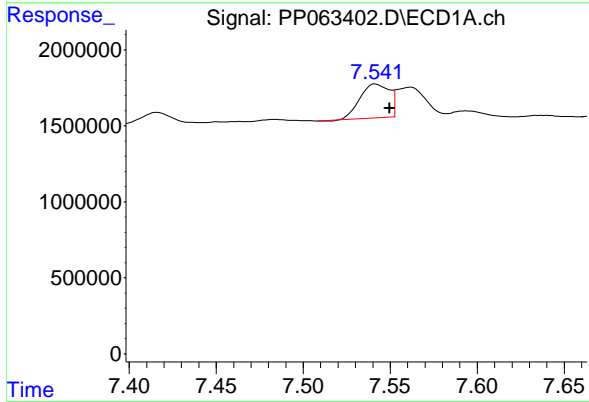
R.T.: 0.000 min
 Exp R.T.: 7.291 min
 Response: 0
 Conc: N.D.

Instrument :
 ECD_P
 ClientSampleId :
 VNJ-202



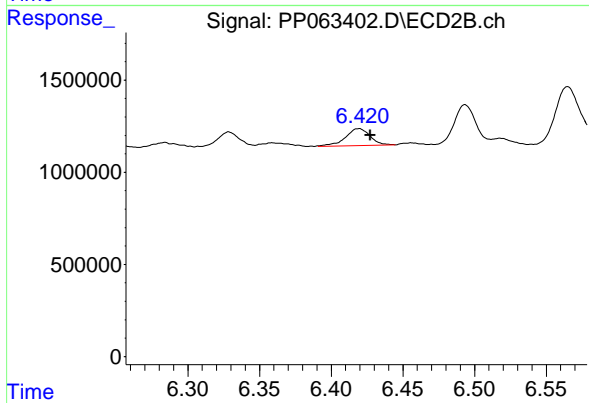
#31 AR-1260-1

R.T.: 6.231 min
 Delta R.T.: -0.007 min
 Response: 1640687
 Conc: 12.38 ng/ml



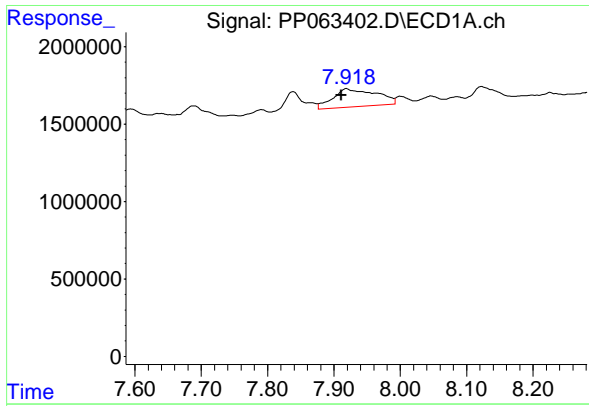
#32 AR-1260-2

R.T.: 7.542 min
 Delta R.T.: -0.008 min
 Response: 2584601
 Conc: 20.32 ng/ml



#32 AR-1260-2

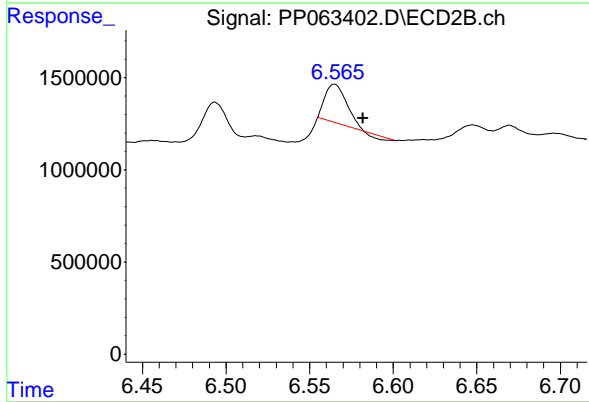
R.T.: 6.419 min
 Delta R.T.: -0.008 min
 Response: 1107752
 Conc: 7.50 ng/ml



#33 AR-1260-3

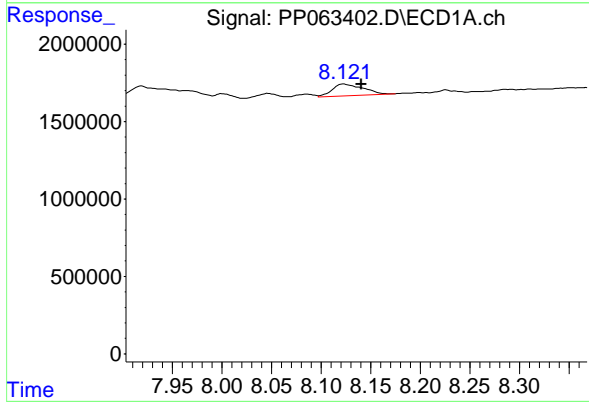
R.T.: 7.919 min
 Delta R.T.: 0.008 min
 Response: 5284849
 Conc: 51.12 ng/ml

Instrument :
 ECD_P
 ClientSampleId :
 VNJ-202



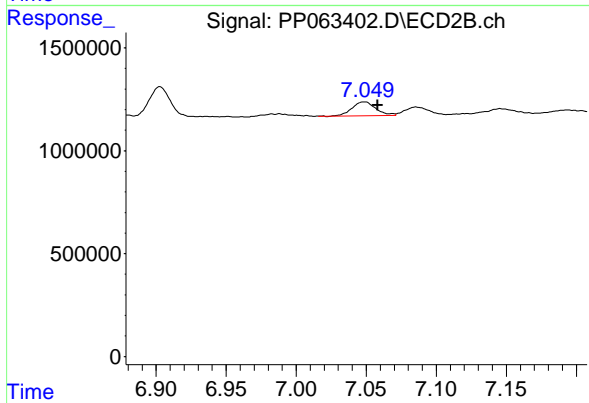
#33 AR-1260-3

R.T.: 6.565 min
 Delta R.T.: -0.017 min
 Response: 1768645
 Conc: 12.20 ng/ml



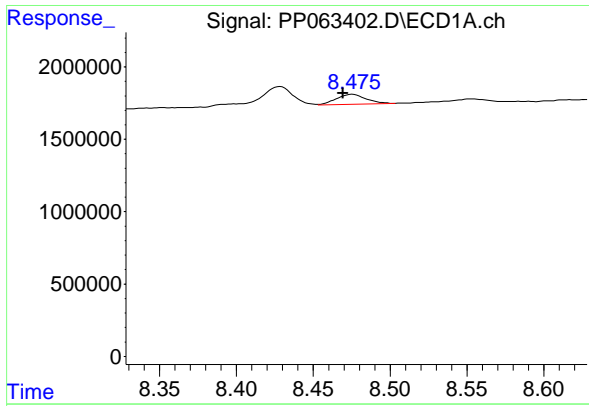
#34 AR-1260-4

R.T.: 8.123 min
 Delta R.T.: -0.018 min
 Response: 1659218
 Conc: 14.13 ng/ml



#34 AR-1260-4

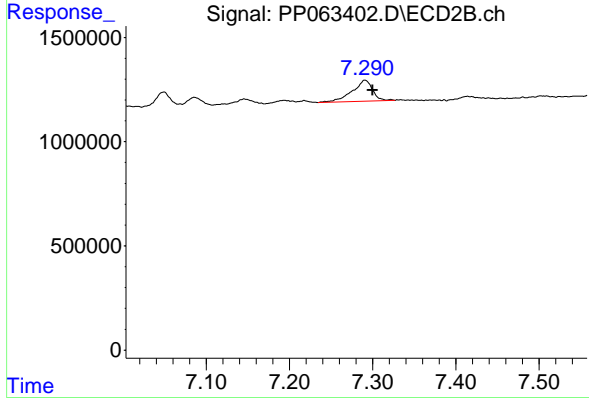
R.T.: 7.049 min
 Delta R.T.: -0.009 min
 Response: 792901
 Conc: 6.50 ng/ml



#35 AR-1260-5

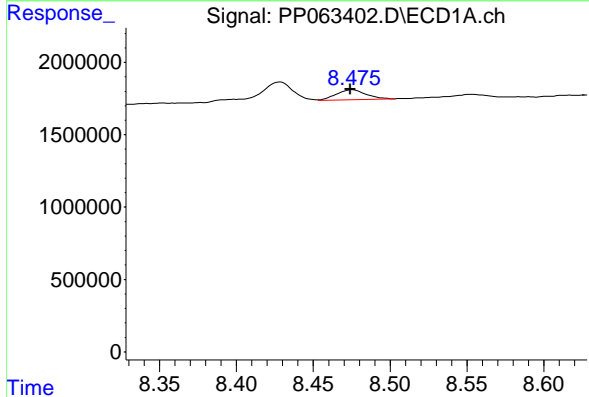
R.T.: 8.475 min
 Delta R.T.: 0.006 min
 Response: 920103
 Conc: 4.69 ng/ml

Instrument : ECD_P
 ClientSampleId : VNJ-202



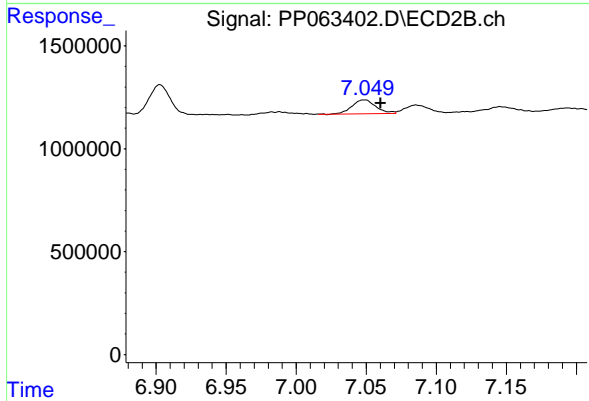
#35 AR-1260-5

R.T.: 7.291 min
 Delta R.T.: -0.009 min
 Response: 1724488
 Conc: 6.94 ng/ml



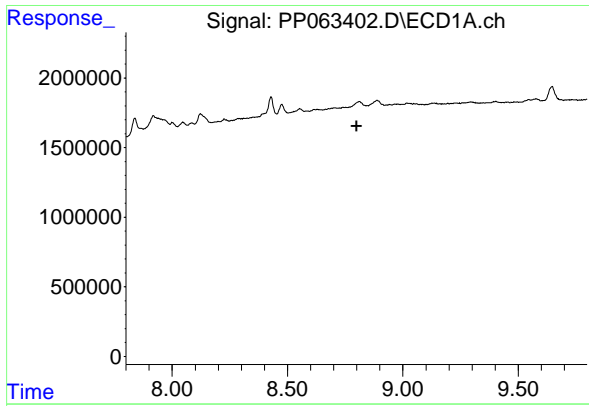
#37 AR-1262-2

R.T.: 8.475 min
 Delta R.T.: 0.001 min
 Response: 920103
 Conc: 3.99 ng/ml



#37 AR-1262-2

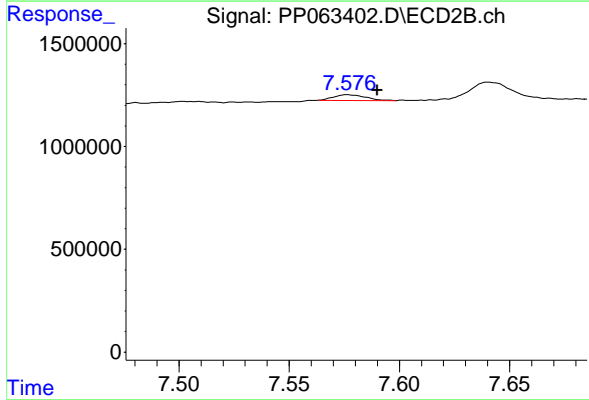
R.T.: 7.049 min
 Delta R.T.: -0.011 min
 Response: 792901
 Conc: 4.84 ng/ml



#38 AR-1262-3

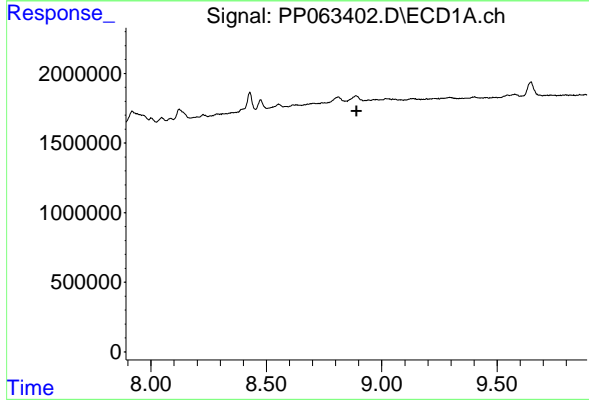
R.T.: 0.000 min
 Exp R.T.: 8.799 min
 Response: 0
 Conc: N.D.

Instrument :
 ECD_P
 ClientSampleId :
 VNJ-202



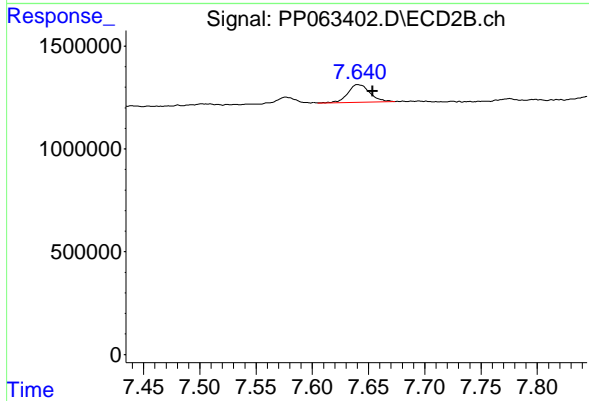
#38 AR-1262-3

R.T.: 7.576 min
 Delta R.T.: -0.014 min
 Response: 275076
 Conc: 2.27 ng/ml



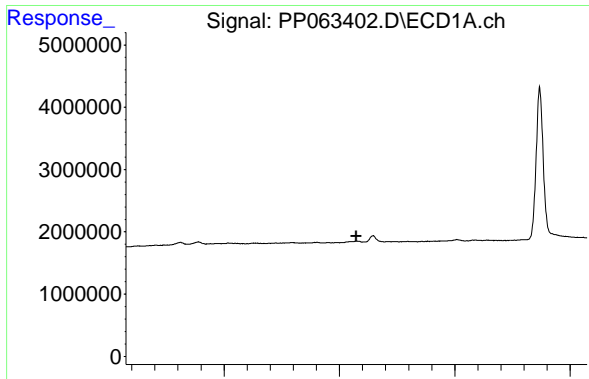
#39 AR-1262-4

R.T.: 0.000 min
 Exp R.T.: 8.891 min
 Response: 0
 Conc: N.D.



#39 AR-1262-4

R.T.: 7.641 min
 Delta R.T.: -0.013 min
 Response: 1174708
 Conc: 5.57 ng/ml

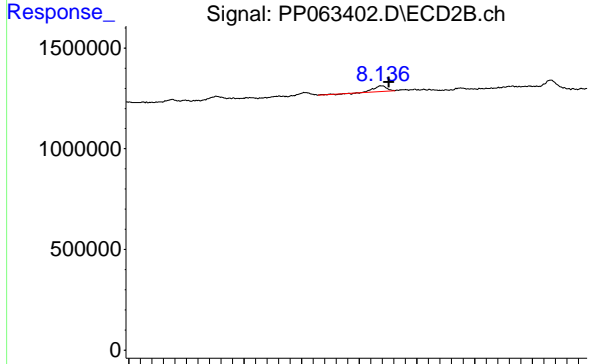


#40 AR-1262-5

R.T.: 0.000 min
 Exp R.T.: 9.573 min
 Response: 0
 Conc: N.D.

Instrument :
 ECD_P
 ClientSampleId :
 VNJ-202

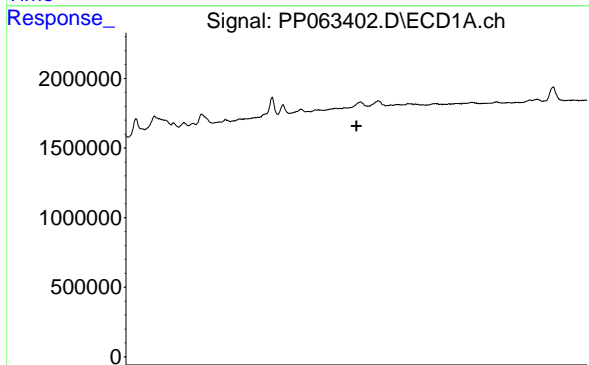
Time



#40 AR-1262-5

R.T.: 8.138 min
 Delta R.T.: -0.014 min
 Response: 445012
 Conc: 5.45 ng/ml

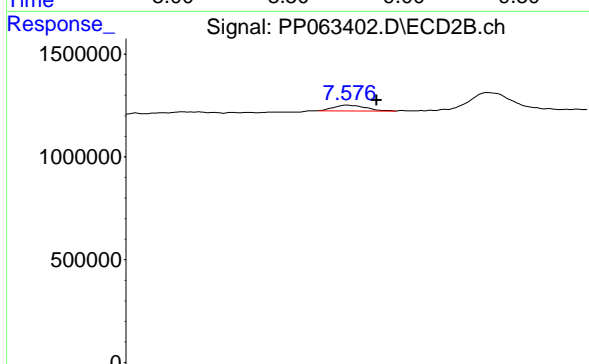
Time



#41 AR-1268-1

R.T.: 0.000 min
 Exp R.T.: 8.795 min
 Response: 0
 Conc: N.D.

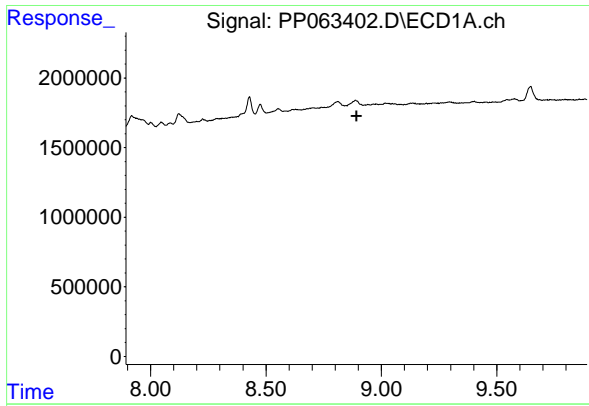
Time



#41 AR-1268-1

R.T.: 7.576 min
 Delta R.T.: -0.013 min
 Response: 275076
 Conc: 0.86 ng/ml

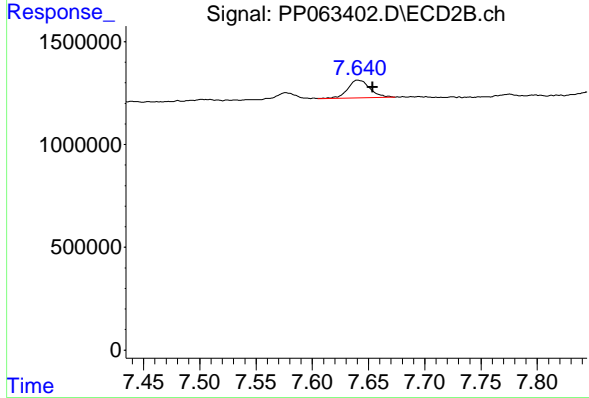
Time



#42 AR-1268-2

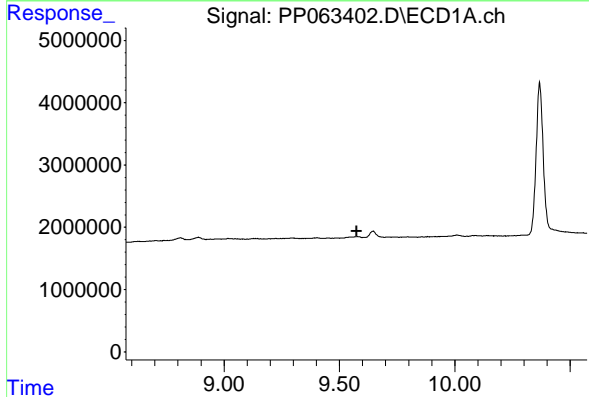
R.T.: 0.000 min
 Exp R.T.: 8.892 min
 Response: 0
 Conc: N.D.

Instrument : ECD_P
 ClientSampleId : VNJ-202



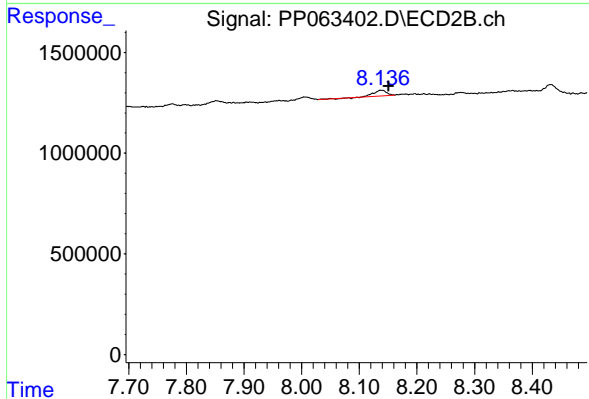
#42 AR-1268-2

R.T.: 7.641 min
 Delta R.T.: -0.013 min
 Response: 1174708
 Conc: 3.93 ng/ml



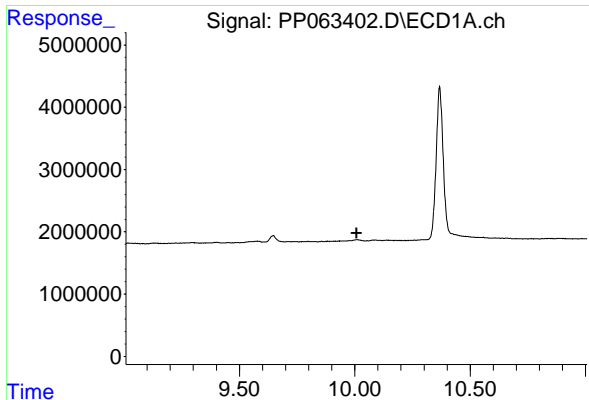
#44 AR-1268-4

R.T.: 0.000 min
 Exp R.T.: 9.574 min
 Response: 0
 Conc: N.D.



#44 AR-1268-4

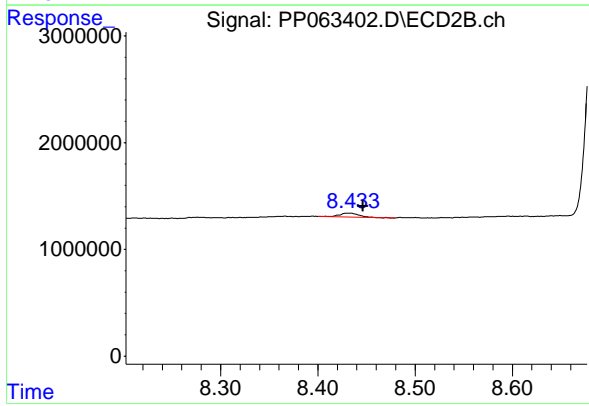
R.T.: 8.138 min
 Delta R.T.: -0.013 min
 Response: 445012
 Conc: 5.07 ng/ml



#45 AR-1268-5

R.T.: 0.000 min
 Exp R.T.: 10.007 min
 Response: 0
 Conc: N.D.

Instrument :
 ECD_P
 ClientSampleId :
 VNJ-202



#45 AR-1268-5

R.T.: 8.432 min
 Delta R.T.: -0.014 min
 Response: 540624
 Conc: 0.64 ng/ml