

Data Path : Z:\pestpcbsrv\HPCHEM1\ECD\_P\Data\PP022422\  
 Data File : PP043987.D  
 Signal(s) : Signal #1: ECD1A.ch Signal #2: ECD2B.ch  
 Acq On : 24 Feb 2022 22:45  
 Operator : YP\AJ  
 Sample : N1647-02  
 Misc :  
 ALS Vial : 22 Sample Multiplier: 1

**Instrument :**  
 ECD\_P  
**ClientSampleId :**  
 31415

**Manual Integrations**  
**APPROVED**

Reviewed By :Yogesh Patel 02/25/2022  
 Supervised By :Ankita Jodhani 02/25/2022

Integration File signal 1: autoint1.e  
 Integration File signal 2: autoint2.e  
 Quant Time: Feb 25 00:45:58 2022  
 Quant Method : Z:\pestpcbsrv\HPCHEM1\ECD\_P\methods\PP021022.M  
 Quant Title : GC EXTRACTABLES  
 QLast Update : Fri Feb 11 04:48:05 2022  
 Response via : Initial Calibration  
 Integrator: ChemStation

Volume Inj. : 2 µl  
 Signal #1 Phase : ZB-MR1 Signal #2 Phase: ZB-MR2  
 Signal #1 Info : 30Mx0.32mmx 0.50µ Signal #2 Info : 30M x 0.32mm x 0.25µm

Compound	RT#1	RT#2	Resp#1	Resp#2	ng/ml	ng/ml
-----						
System Monitoring Compounds						
1) SA Tetrachlo...	3.919	3.176	27257499	25648041	12.328	13.655m
2) SA Decachlor...	10.057	8.543	20533073	25409476	17.285	15.662

Target Compounds

(f)=RT Delta > 1/2 Window (#)=Amounts differ by > 25% (m)=manual int.

Data Path : Z:\pestpcbsrv\HPCHEM1\ECD\_P\Data\PP022422\  
 Data File : PP043987.D  
 Signal(s) : Signal #1: ECD1A.ch Signal #2: ECD2B.ch  
 Acq On : 24 Feb 2022 22:45  
 Operator : YP\AJ  
 Sample : N1647-02  
 Misc :  
 ALS Vial : 22 Sample Multiplier: 1

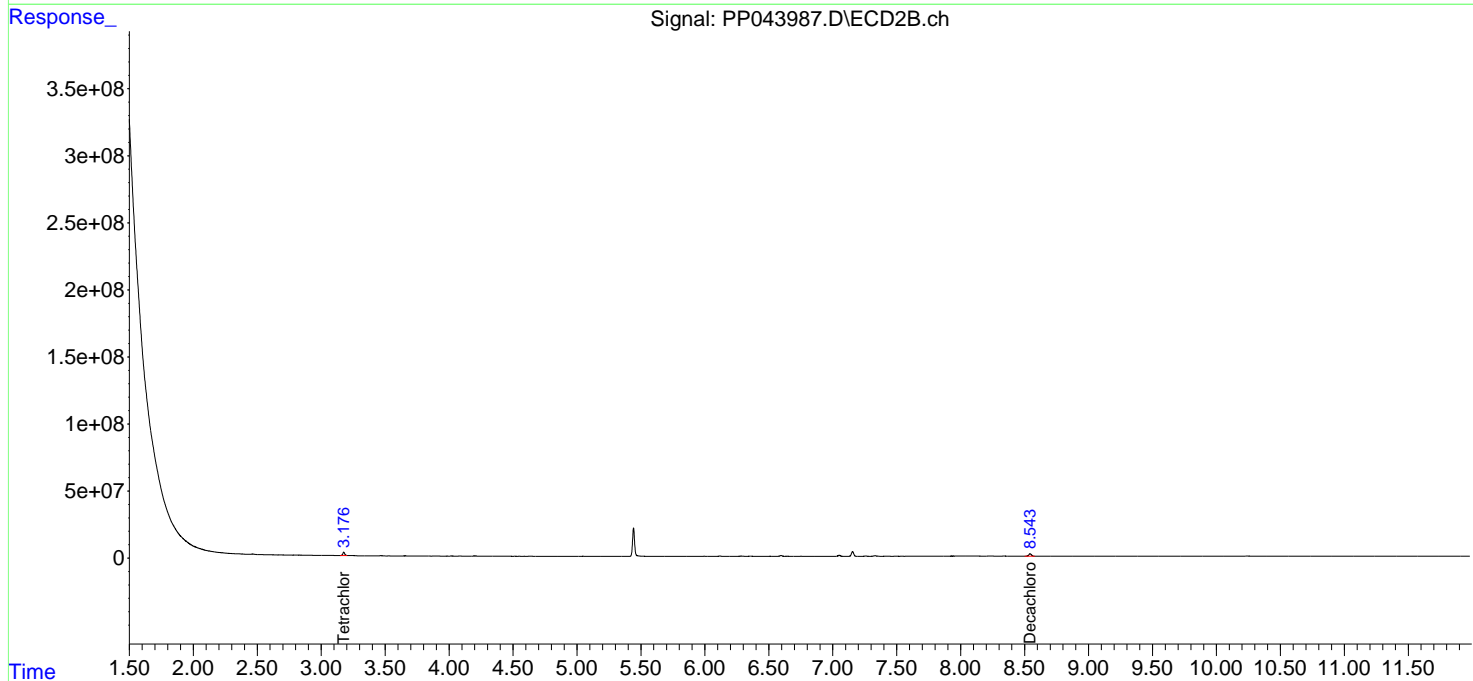
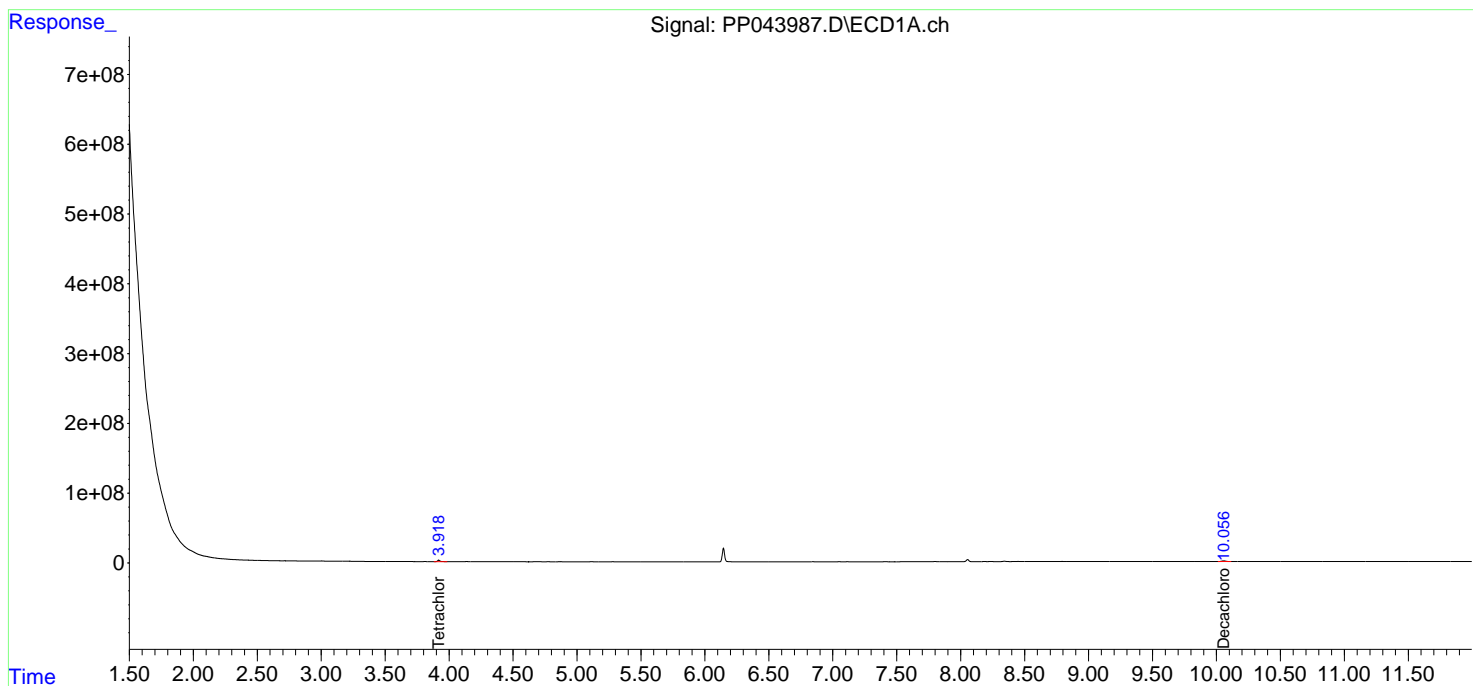
**Instrument :**  
 ECD\_P  
**ClientSampleId :**  
 31415

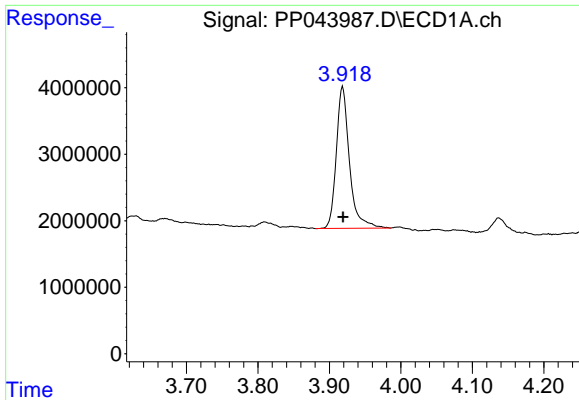
**Manual Integrations**  
**APPROVED**

Reviewed By :Yogesh Patel 02/25/2022  
 Supervised By :Ankita Jodhani 02/25/2022

Integration File signal 1: autoint1.e  
 Integration File signal 2: autoint2.e  
 Quant Time: Feb 25 00:45:58 2022  
 Quant Method : Z:\pestpcbsrv\HPCHEM1\ECD\_P\methods\PP021022.M  
 Quant Title : GC EXTRACTABLES  
 QLast Update : Fri Feb 11 04:48:05 2022  
 Response via : Initial Calibration  
 Integrator: ChemStation

Volume Inj. : 2 µl  
 Signal #1 Phase : ZB-MR1 Signal #2 Phase: ZB-MR2  
 Signal #1 Info : 30Mx0.32mmx 0.50µ Signal #2 Info : 30M x 0.32mm x 0.25µm





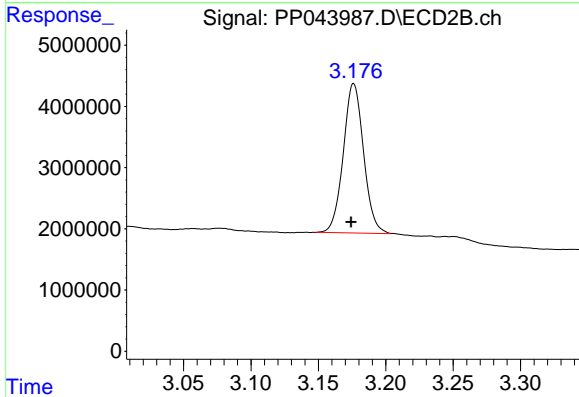
#1 Tetrachloro-m-xylene

R.T.: 3.919 min  
 Delta R.T.: 0.000 min  
 Response: 27257499  
 Conc: 12.33 ng/ml

Instrument :  
 ECD\_P  
 ClientSampleId :  
 31415

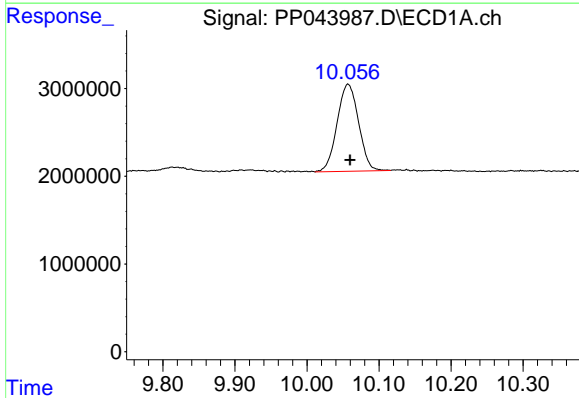
Manual Integrations  
 APPROVED

Reviewed By :Yogesh Patel 02/25/2022  
 Supervised By :Ankita Jodhani 02/25/2022



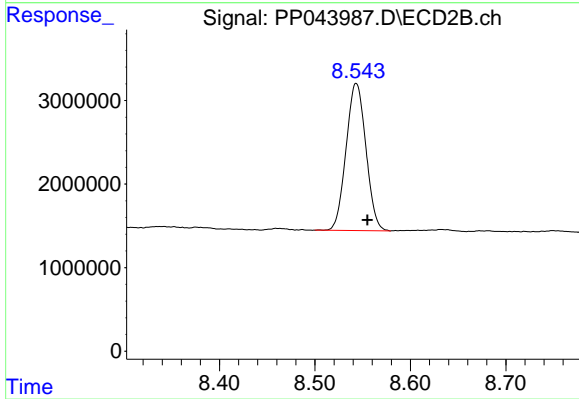
#1 Tetrachloro-m-xylene

R.T.: 3.176 min  
 Delta R.T.: 0.002 min  
 Response: 25648041  
 Conc: 13.66 ng/ml m



#2 Decachlorobiphenyl

R.T.: 10.057 min  
 Delta R.T.: -0.003 min  
 Response: 20533073  
 Conc: 17.29 ng/ml



#2 Decachlorobiphenyl

R.T.: 8.543 min  
 Delta R.T.: -0.012 min  
 Response: 25409476  
 Conc: 15.66 ng/ml