

Data Path : Z:\pestpcbsrv\HPCHEM1\ECD_P\Data\PP022422\
 Data File : PP043989.D
 Signal(s) : Signal #1: ECD1A.ch Signal #2: ECD2B.ch
 Acq On : 25 Feb 2022 00:00
 Operator : YP\AJ
 Sample : AR1660CCC500
 Misc :
 ALS Vial : 3 Sample Multiplier: 1

Instrument :
 ECD_P
 ClientSampleId :
 AR1660CCC500

Integration File signal 1: autoint1.e
 Integration File signal 2: autoint2.e
 Quant Time: Feb 25 00:46:55 2022
 Quant Method : Z:\pestpcbsrv\HPCHEM1\ECD_P\methods\PP021022.M
 Quant Title : GC EXTRACTABLES
 QLast Update : Fri Feb 11 04:48:05 2022
 Response via : Initial Calibration
 Integrator: ChemStation

Volume Inj. : 2 µl
 Signal #1 Phase : ZB-MR2 Signal #2 Phase: ZB-MR2
 Signal #1 Info : 30Mx0.32mmx 0.50µ Signal #2 Info : 30M x 0.32mm x 0.25µm

Compound	RT#1	RT#2	Resp#1	Resp#2	ng/ml	ng/ml

System Monitoring Compounds						
1) SA Tetrachlo...	3.915	3.172	108.7E6	94915679	49.149	50.534
2) SA Decachlor...	10.056	8.543	62632216	76036254	52.726	46.867
Target Compounds						
3) L1 AR-1016-1	5.168	4.317	33956110	29935534	467.958	488.589
4) L1 AR-1016-2	5.192	4.336	49948860	42102980	473.580	498.325
5) L1 AR-1016-3	5.257	4.521	31099688	23539387	472.316	503.873
6) L1 AR-1016-4	5.363	4.569	25737509	18990630	474.597	508.165
7) L1 AR-1016-5	5.684	4.795	25038966	22260529	476.679	487.286
31) L7 AR-1260-1	6.913	5.905	41137004	40714505	491.234	509.123
32) L7 AR-1260-2	7.197	6.111	43105235	49321276	476.192	505.067
33) L7 AR-1260-3	7.592	6.274	33991560	45517593	468.923	498.597
34) L7 AR-1260-4	7.840	6.787	40067577	39945722	466.682	493.705
35) L7 AR-1260-5	8.184	7.055	73474320	91496268	474.006	494.935

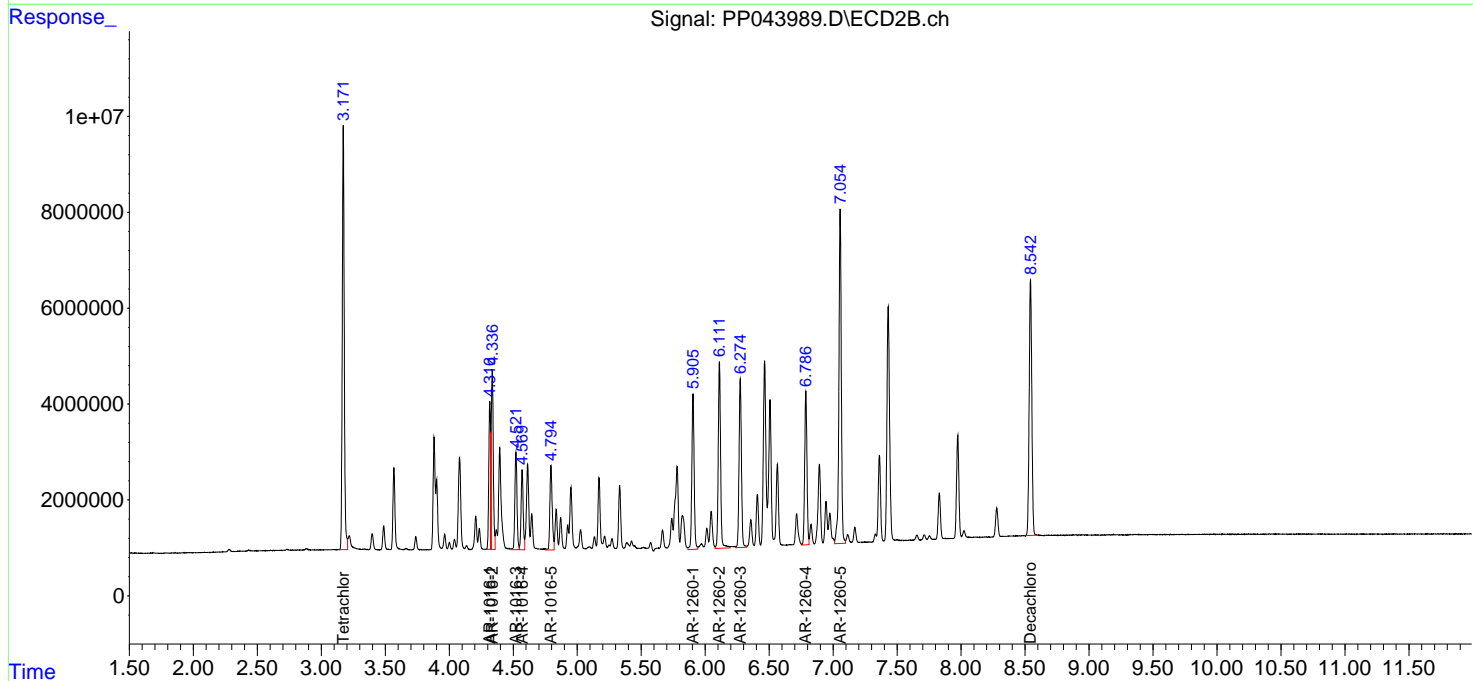
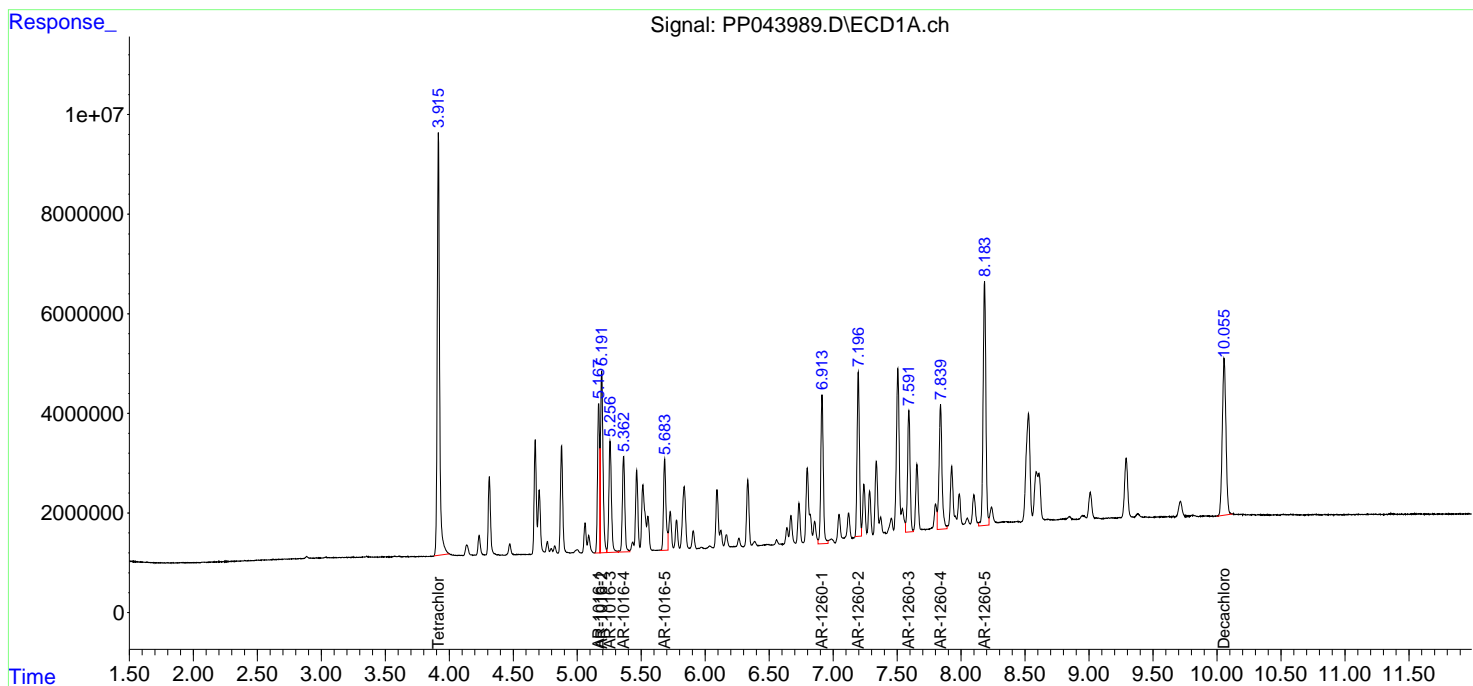
(f)=RT Delta > 1/2 Window (#)=Amounts differ by > 25% (m)=manual int.

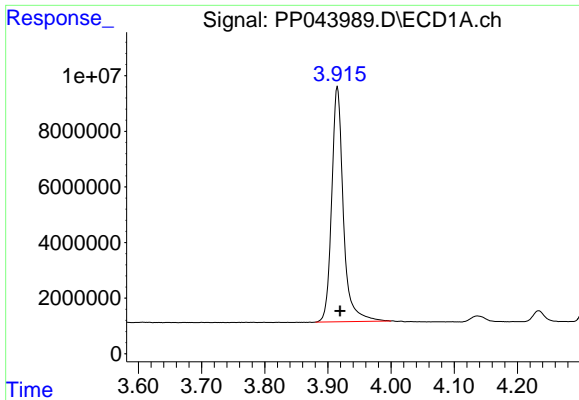
Data Path : Z:\pestpcbsrv\HPCHEM1\ECD_P\Data\PP022422\
 Data File : PP043989.D
 Signal(s) : Signal #1: ECD1A.ch Signal #2: ECD2B.ch
 Acq On : 25 Feb 2022 00:00
 Operator : YP\AJ
 Sample : AR1660CCC500
 Misc :
 ALS Vial : 3 Sample Multiplier: 1

Instrument :
 ECD_P
 ClientSampleId :
 AR1660CCC500

Integration File signal 1: autoint1.e
 Integration File signal 2: autoint2.e
 Quant Time: Feb 25 00:46:55 2022
 Quant Method : Z:\pestpcbsrv\HPCHEM1\ECD_P\methods\PP021022.M
 Quant Title : GC EXTRACTABLES
 QLast Update : Fri Feb 11 04:48:05 2022
 Response via : Initial Calibration
 Integrator: ChemStation

Volume Inj. : 2 µl
 Signal #1 Phase : ZB-MR1 Signal #2 Phase: ZB-MR2
 Signal #1 Info : 30Mx0.32mmx 0.50µ Signal #2 Info : 30M x 0.32mm x 0.25µm

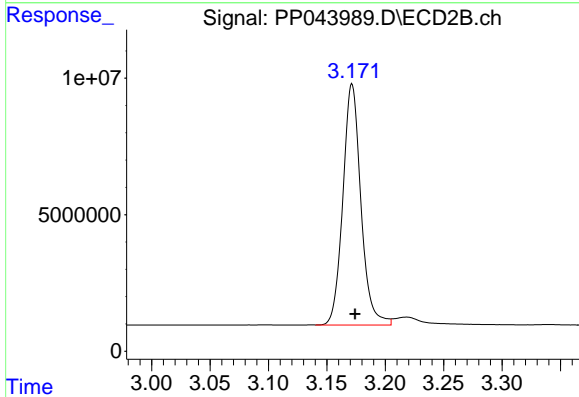




#1 Tetrachloro-m-xylene

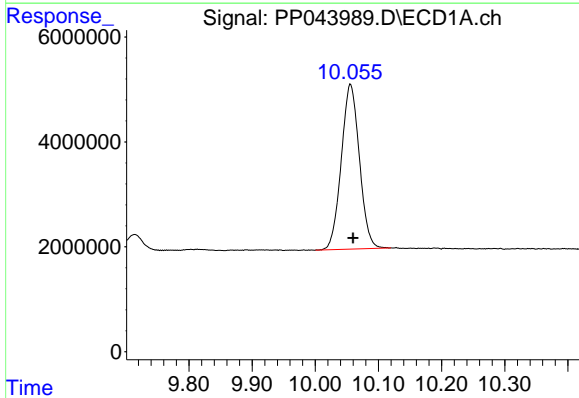
R.T.: 3.915 min
 Delta R.T.: -0.004 min
 Response: 108670097
 Conc: 49.15 ng/ml

Instrument :
 ECD_P
 ClientSampleId :
 AR1660CCC500



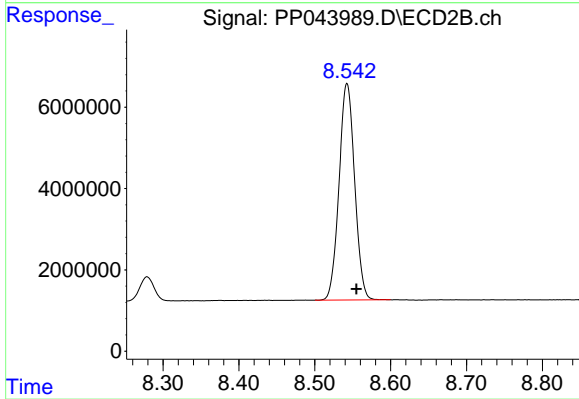
#1 Tetrachloro-m-xylene

R.T.: 3.172 min
 Delta R.T.: -0.003 min
 Response: 94915679
 Conc: 50.53 ng/ml



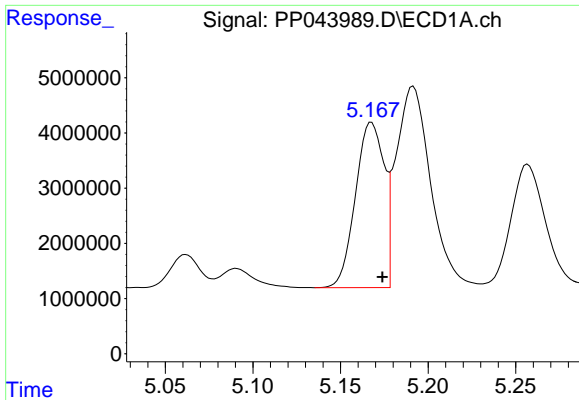
#2 Decachlorobiphenyl

R.T.: 10.056 min
 Delta R.T.: -0.004 min
 Response: 62632216
 Conc: 52.73 ng/ml



#2 Decachlorobiphenyl

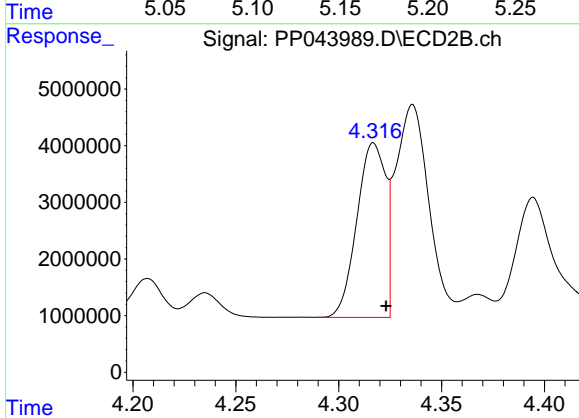
R.T.: 8.543 min
 Delta R.T.: -0.012 min
 Response: 76036254
 Conc: 46.87 ng/ml



#3 AR-1016-1

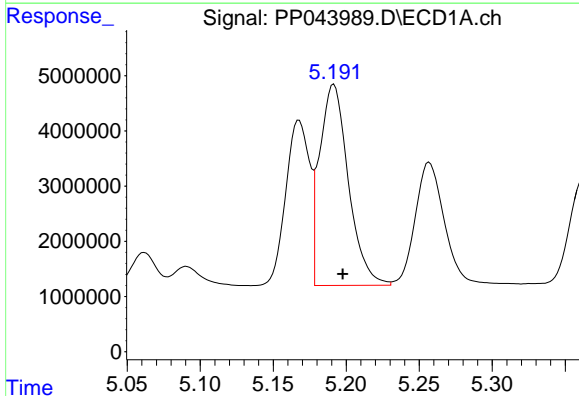
R.T.: 5.168 min
 Delta R.T.: -0.006 min
 Response: 33956110
 Conc: 467.96 ng/ml

Instrument :
 ECD_P
 ClientSampleId :
 AR1660CCC500



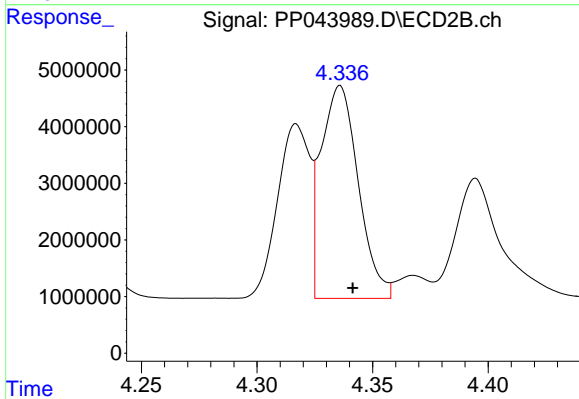
#3 AR-1016-1

R.T.: 4.317 min
 Delta R.T.: -0.006 min
 Response: 29935534
 Conc: 488.59 ng/ml



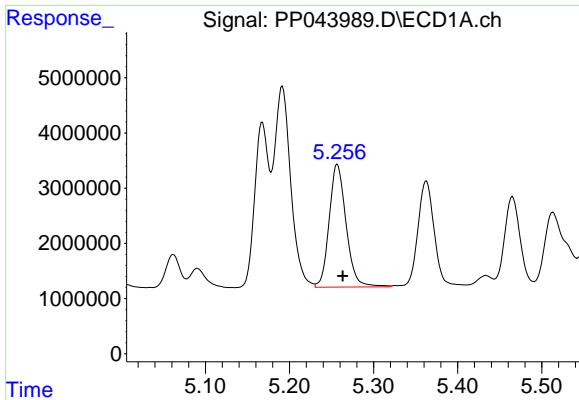
#4 AR-1016-2

R.T.: 5.192 min
 Delta R.T.: -0.006 min
 Response: 49948860
 Conc: 473.58 ng/ml



#4 AR-1016-2

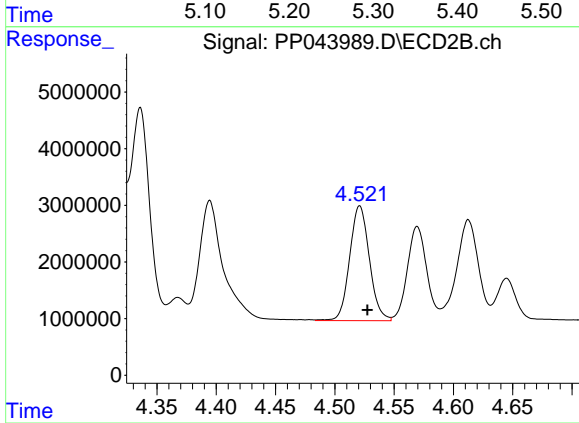
R.T.: 4.336 min
 Delta R.T.: -0.005 min
 Response: 42102980
 Conc: 498.33 ng/ml



#5 AR-1016-3

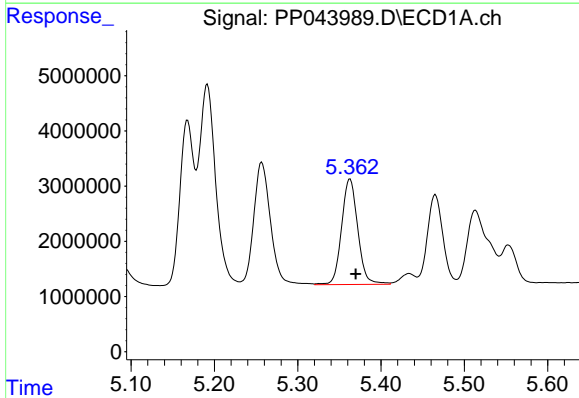
R.T.: 5.257 min
 Delta R.T.: -0.006 min
 Response: 31099688
 Conc: 472.32 ng/ml

Instrument :
 ECD_P
 ClientSampleId :
 AR1660CCC500



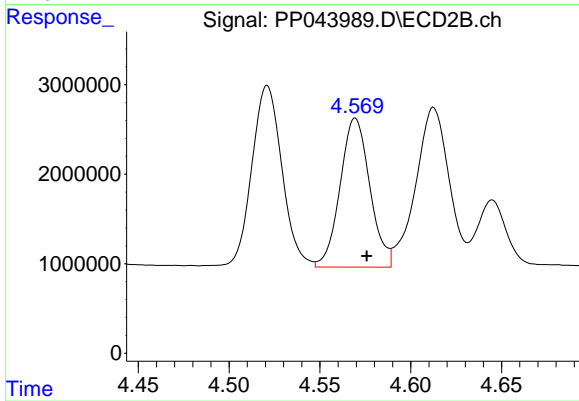
#5 AR-1016-3

R.T.: 4.521 min
 Delta R.T.: -0.006 min
 Response: 23539387
 Conc: 503.87 ng/ml



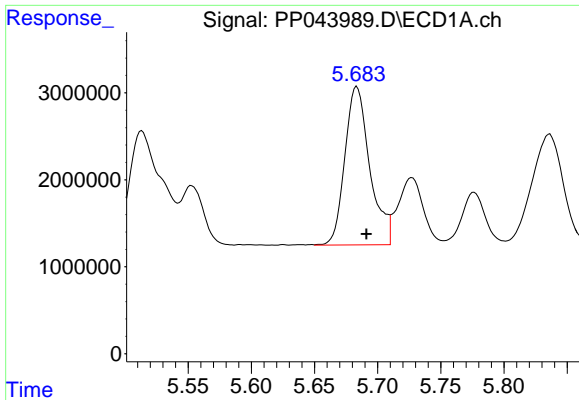
#6 AR-1016-4

R.T.: 5.363 min
 Delta R.T.: -0.007 min
 Response: 25737509
 Conc: 474.60 ng/ml



#6 AR-1016-4

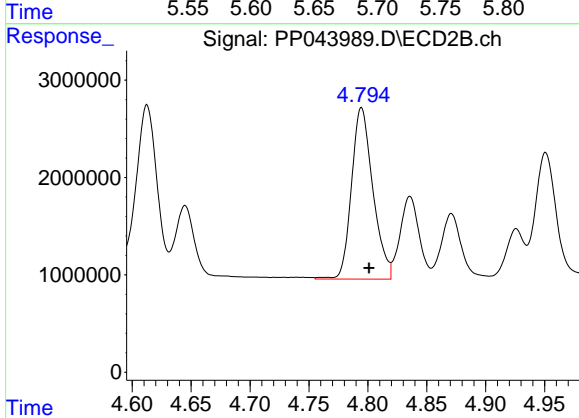
R.T.: 4.569 min
 Delta R.T.: -0.006 min
 Response: 18990630
 Conc: 508.17 ng/ml



#7 AR-1016-5

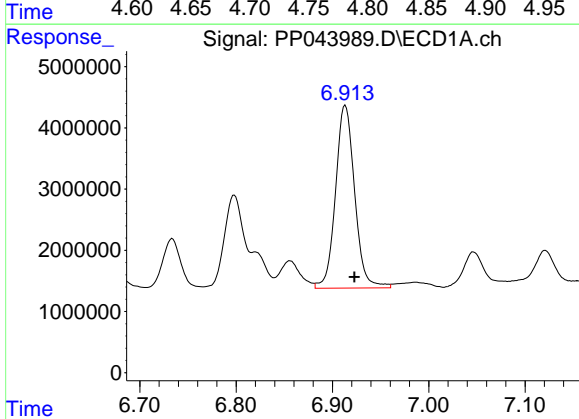
R.T.: 5.684 min
 Delta R.T.: -0.007 min
 Response: 25038966
 Conc: 476.68 ng/ml

Instrument :
 ECD_P
 ClientSampleId :
 AR1660CCC500



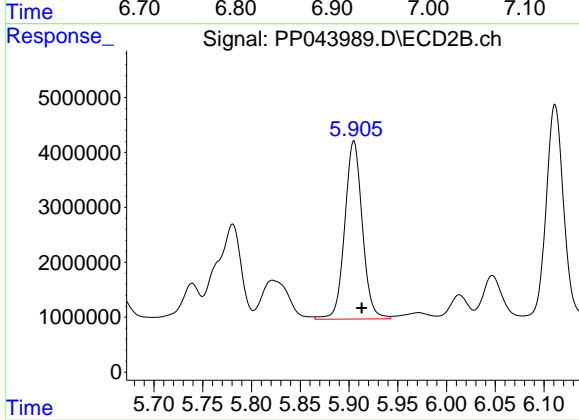
#7 AR-1016-5

R.T.: 4.795 min
 Delta R.T.: -0.007 min
 Response: 22260529
 Conc: 487.29 ng/ml



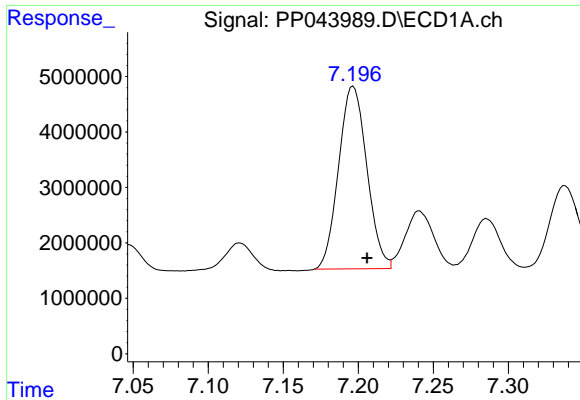
#31 AR-1260-1

R.T.: 6.913 min
 Delta R.T.: -0.009 min
 Response: 41137004
 Conc: 491.23 ng/ml



#31 AR-1260-1

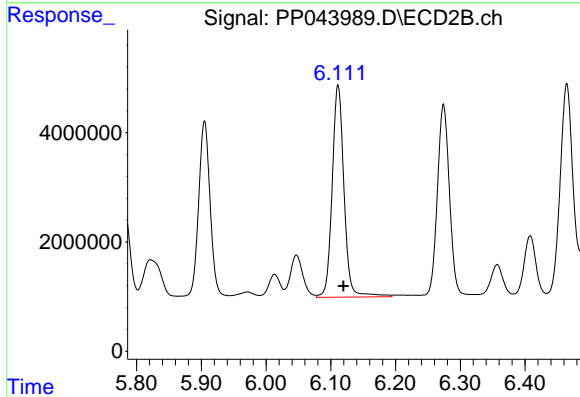
R.T.: 5.905 min
 Delta R.T.: -0.008 min
 Response: 40714505
 Conc: 509.12 ng/ml



#32 AR-1260-2

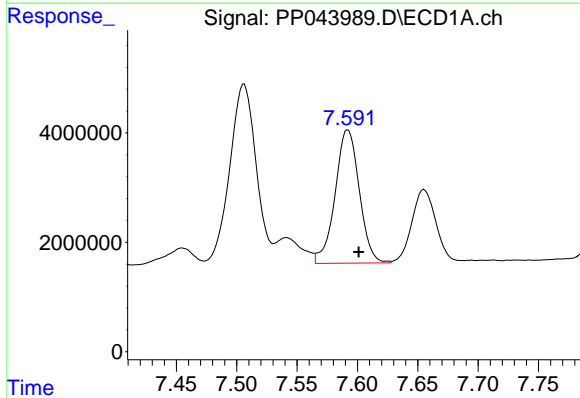
R.T.: 7.197 min
 Delta R.T.: -0.009 min
 Response: 43105235
 Conc: 476.19 ng/ml

Instrument :
 ECD_P
 ClientSampleId :
 AR1660CCC500



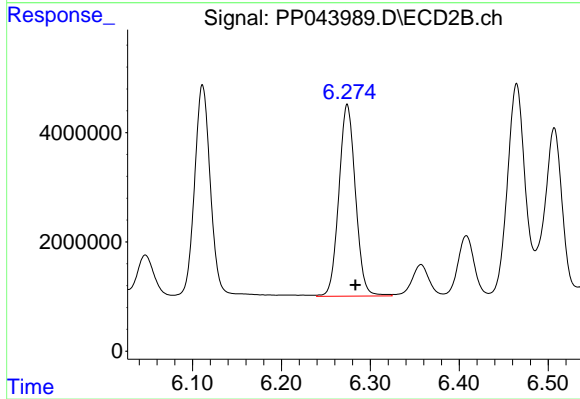
#32 AR-1260-2

R.T.: 6.111 min
 Delta R.T.: -0.008 min
 Response: 49321276
 Conc: 505.07 ng/ml



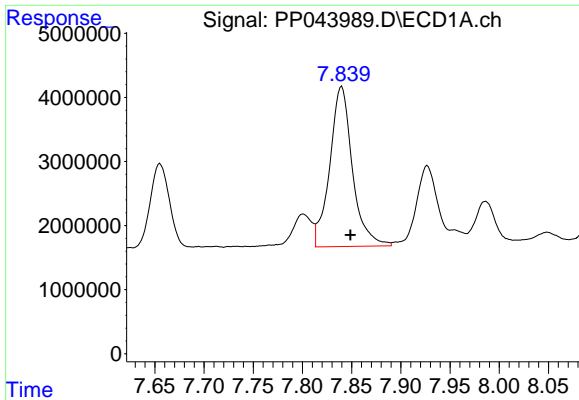
#33 AR-1260-3

R.T.: 7.592 min
 Delta R.T.: -0.009 min
 Response: 33991560
 Conc: 468.92 ng/ml



#33 AR-1260-3

R.T.: 6.274 min
 Delta R.T.: -0.009 min
 Response: 45517593
 Conc: 498.60 ng/ml

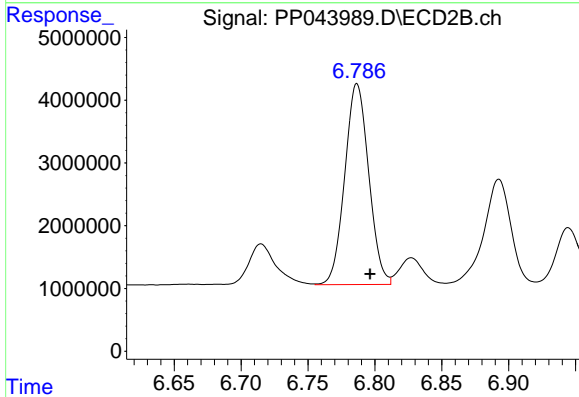


#34 AR-1260-4

R.T.: 7.840 min
 Delta R.T.: -0.009 min
 Response: 40067577
 Conc: 466.68 ng/ml

Instrument :
 ECD_P
 ClientSampleId :
 AR1660CCC500

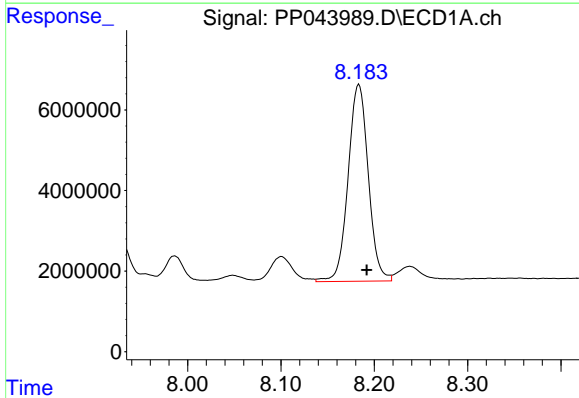
Time 7.65 7.70 7.75 7.80 7.85 7.90 7.95 8.00 8.05



#34 AR-1260-4

R.T.: 6.787 min
 Delta R.T.: -0.010 min
 Response: 39945722
 Conc: 493.70 ng/ml

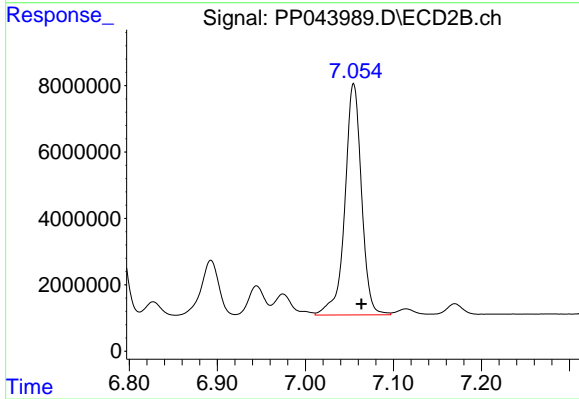
Time 6.65 6.70 6.75 6.80 6.85 6.90



#35 AR-1260-5

R.T.: 8.184 min
 Delta R.T.: -0.008 min
 Response: 73474320
 Conc: 474.01 ng/ml

Time 8.00 8.10 8.20 8.30



#35 AR-1260-5

R.T.: 7.055 min
 Delta R.T.: -0.009 min
 Response: 91496268
 Conc: 494.94 ng/ml

Time 6.80 6.90 7.00 7.10 7.20