

Data Path : Z:\pestpcbsrv\HPCHEM1\ECD_P\Data\PP022522\
 Data File : PP044034.D
 Signal(s) : Signal #1: ECD1A.ch Signal #2: ECD2B.ch
 Acq On : 25 Feb 2022 20:52
 Operator : YP\AJ
 Sample : N1664-31
 Misc :
 ALS Vial : 33 Sample Multiplier: 1

Instrument :
 ECD_P
 ClientSampleId :
 TP-11

Integration File signal 1: autoint1.e
 Integration File signal 2: autoint2.e
 Quant Time: Feb 25 23:56:00 2022
 Quant Method : Z:\pestpcbsrv\HPCHEM1\ECD_P\methods\PP021022.M
 Quant Title : GC EXTRACTABLES
 QLast Update : Fri Feb 11 04:48:05 2022
 Response via : Initial Calibration
 Integrator: ChemStation

Volume Inj. : 2 µl
 Signal #1 Phase : ZB-MR1 Signal #2 Phase: ZB-MR2
 Signal #1 Info : 30Mx0.32mmx 0.50µ Signal #2 Info : 30M x 0.32mm x 0.25µm

Compound	RT#1	RT#2	Resp#1	Resp#2	ng/ml	ng/ml
System Monitoring Compounds						
1) SA Tetrachlo...	3.914	3.171	45079928	41039882	20.388	21.850
2) SA Decachlor...	10.055	8.541	23948255	31478012	20.160	19.402
Target Compounds						
3) L1 AR-1016-1	5.174	4.315	65722	49750	0.906	0.812
4) L1 AR-1016-2	5.198	4.337	43477	313366	0.412	3.709 #
5) L1 AR-1016-3	5.260	4.527	73029	36499	1.109	0.781 #
6) L1 AR-1016-4	5.364	4.576	134232	26788	2.475	0.717 #
7) L1 AR-1016-5	5.685	4.800	150435	34739	2.864	0.760 #
8) L2 AR-1221-1	4.133	3.406	2806514	13560	110.235	0.568 #
9) L2 AR-1221-2	4.236	3.513f	768478	237199	40.028	13.134 #
10) L2 AR-1221-3	4.318	3.575	114661	37861	1.996	0.734 #
11) L3 AR-1232-1	4.318	3.575	114661	37861	2.363	0.880 #
12) L3 AR-1232-2	4.879	4.337	123789	313366	5.224	8.778 #
13) L3 AR-1232-3	5.198	4.527	43477	36499	1.010	1.867 #
14) L3 AR-1232-4	5.364	4.624	134232	23888	6.149	1.381 #
15) L3 AR-1232-5	5.467	4.800	93480	34739	5.796	1.849 #
16) L4 AR-1242-1	5.174	4.315	65722	49750	1.170	1.021
17) L4 AR-1242-2	5.198	4.337	43477	313366	0.525	4.654 #
18) L4 AR-1242-3	5.260	4.527	73029	36499	1.411	0.972 #
19) L4 AR-1242-4	5.364	4.624	134232	23888	3.143	0.662 #
20) L4 AR-1242-5	6.172	5.173	119317	288732	2.763	6.707 #
21) L5 AR-1248-1	5.174	4.315	65722	49750	1.603	1.336
22) L5 AR-1248-2	5.467	4.576	93480	26788	1.645	0.548 #
23) L5 AR-1248-3	5.685	4.624	150435	23888	2.255	0.466 #
24) L5 AR-1248-4	6.127	4.800	59174	34739	0.847	0.593 #
25) L5 AR-1248-5	6.172	5.220	119317	67620	1.726	1.180 #
26) L6 AR-1254-1	6.111	5.173	154224	288732	2.041	3.306 #
27) L6 AR-1254-2	6.328	5.345	237454	26440	2.117	0.347 #
28) L6 AR-1254-3	6.740	5.775	316403	24648	2.734	0.201 #
29) L6 AR-1254-4	7.053	6.022	318716	27655	3.992	0.350 #
30) L6 AR-1254-5	7.508	6.476	70862	16752	0.826	0.145 #
31) L7 AR-1260-1	6.921	5.923	42298	27349	0.505	0.342 #
32) L7 AR-1260-2	7.194	6.118	85447	40368	0.944	0.413 #
33) L7 AR-1260-3	7.612	6.287	155710	29261	2.148	0.321 #
34) L7 AR-1260-4	7.834f	6.801	895180	6466	10.426	0.080 #
35) L7 AR-1260-5	8.191	7.062	146413	48642	0.945	0.263 #
36) L8 AR-1262-1	7.612	6.522	155710	52749	1.577	0.480 #
37) L8 AR-1262-2	8.191	6.801	146413	6466	0.907	0.063 #
38) L8 AR-1262-3	8.517	7.366	75260	220697	0.688	2.590 #
39) L8 AR-1262-4	8.615	7.443	58318	18052	1.216	0.116 #
40) L8 AR-1262-5	9.309	7.991	70402	253131	1.264	3.254 #
41) L9 AR-1268-1	8.517	7.366	75260	220697	0.386	0.871 #

Data Path : Z:\pestpcbsrv\HPCHEM1\ECD_P\Data\PP022522\
 Data File : PP044034.D
 Signal(s) : Signal #1: ECD1A.ch Signal #2: ECD2B.ch
 Acq On : 25 Feb 2022 20:52
 Operator : YP\AJ
 Sample : N1664-31
 Misc :
 ALS Vial : 33 Sample Multiplier: 1

Instrument :
 ECD_P
 ClientSampleId :
 TP-11

Integration File signal 1: autoint1.e
 Integration File signal 2: autoint2.e
 Quant Time: Feb 25 23:56:00 2022
 Quant Method : Z:\pestpcbsrv\HPCHEM1\ECD_P\methods\PP021022.M
 Quant Title : GC EXTRACTABLES
 QLast Update : Fri Feb 11 04:48:05 2022
 Response via : Initial Calibration
 Integrator: ChemStation

Volume Inj. : 2 µl
 Signal #1 Phase : ZB-MR1 Signal #2 Phase: ZB-MR2
 Signal #1 Info : 30Mx0.32mmx 0.50µ Signal #2 Info : 30M x 0.32mm x 0.25µm

	Compound	RT#1	RT#2	Resp#1	Resp#2	ng/ml	ng/ml
42)	L9 AR-1268-2	8.627	7.443	102944	18052	0.588	0.080 #
43)	L9 AR-1268-3	8.854	7.658	64578	130138	0.418	0.668 #
44)	L9 AR-1268-4	9.309	7.991	70402	253131	1.125	2.815 #
45)	L9 AR-1268-5	9.725	8.301	41277	12379	0.091	0.021 #

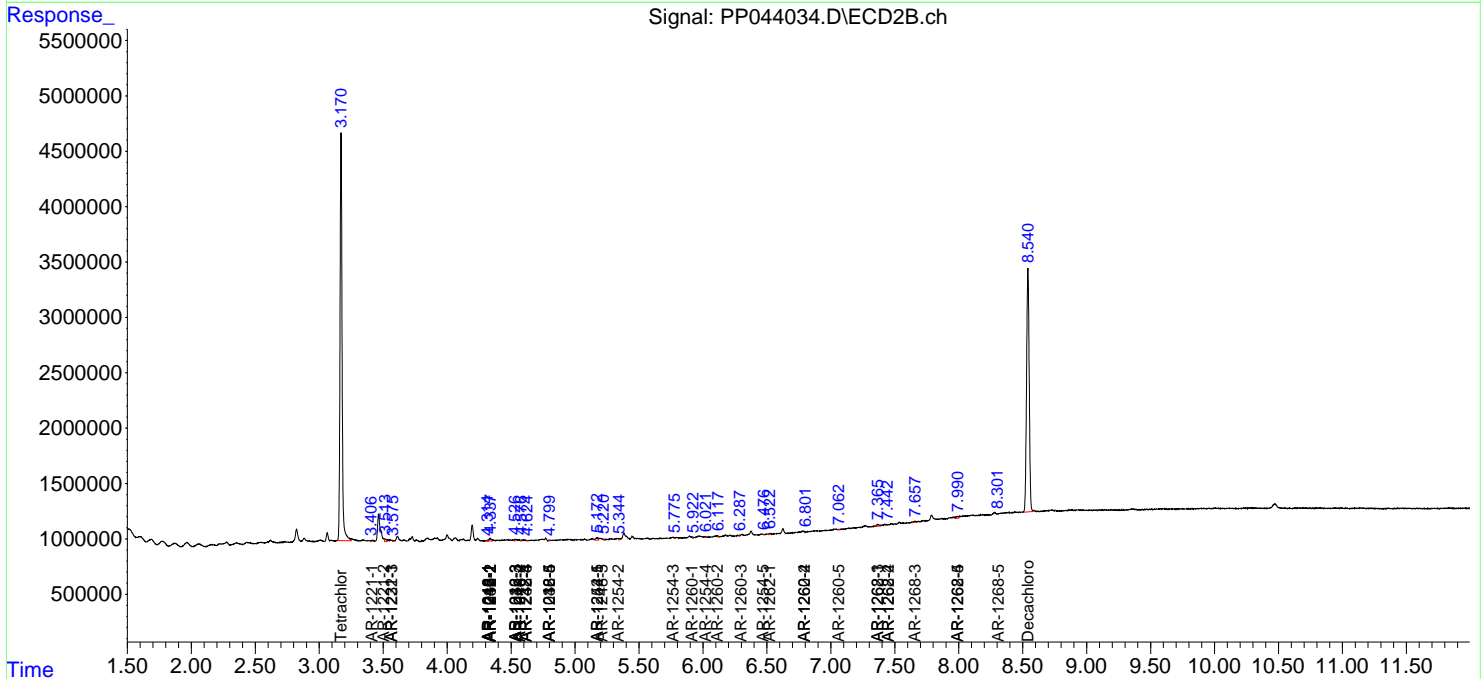
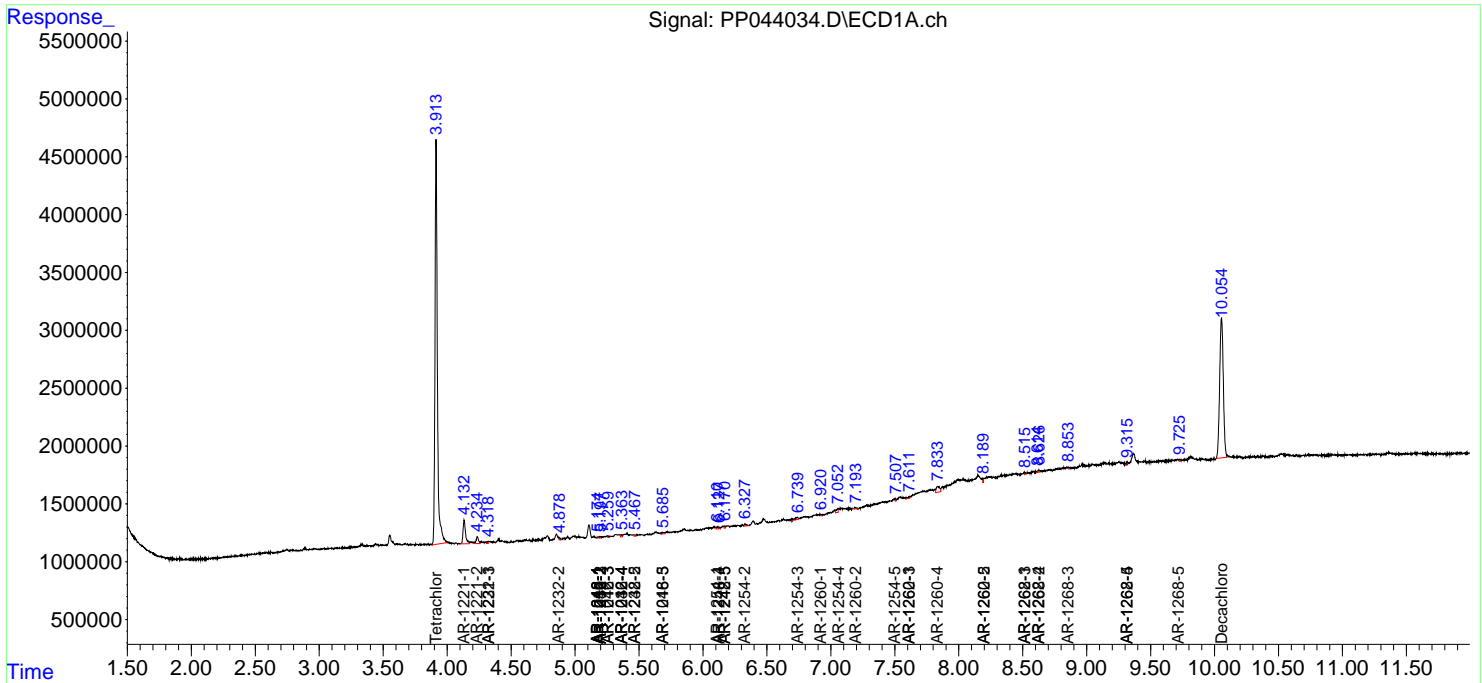
(f)=RT Delta > 1/2 Window (#)=Amounts differ by > 25% (m)=manual int.

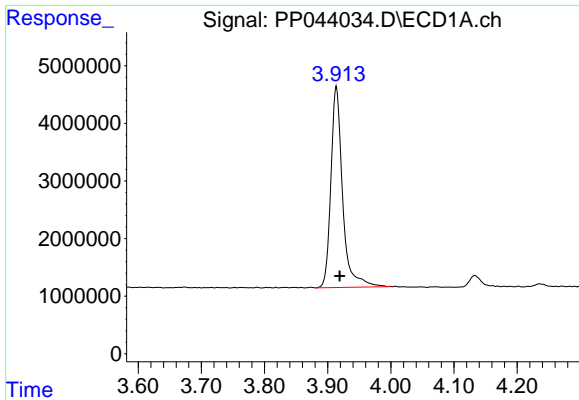
Data Path : Z:\pestpcbsrv\HPCHEM1\ECD_P\Data\PP022522\
 Data File : PP044034.D
 Signal(s) : Signal #1: ECD1A.ch Signal #2: ECD2B.ch
 Acq On : 25 Feb 2022 20:52
 Operator : YP\AJ
 Sample : N1664-31
 Misc :
 ALS Vial : 33 Sample Multiplier: 1

Instrument :
 ECD_P
 ClientSampleId :
 TP-11

Integration File signal 1: autoint1.e
 Integration File signal 2: autoint2.e
 Quant Time: Feb 25 23:56:00 2022
 Quant Method : Z:\pestpcbsrv\HPCHEM1\ECD_P\methods\PP021022.M
 Quant Title : GC EXTRACTABLES
 QLast Update : Fri Feb 11 04:48:05 2022
 Response via : Initial Calibration
 Integrator: ChemStation

Volume Inj. : 2 µl
 Signal #1 Phase : ZB-MR1 Signal #2 Phase: ZB-MR2
 Signal #1 Info : 30Mx0.32mmx 0.50µ Signal #2 Info : 30M x 0.32mm x 0.25µm

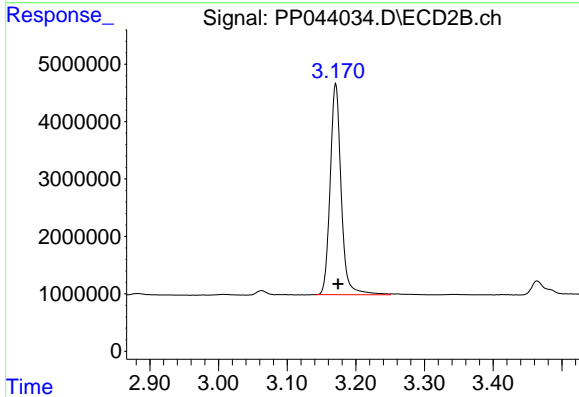




#1 Tetrachloro-m-xylene

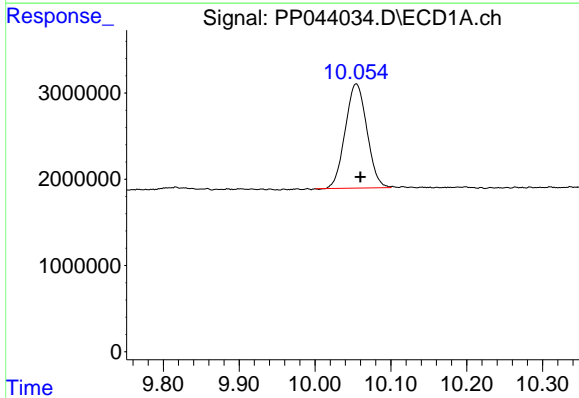
R.T.: 3.914 min
 Delta R.T.: -0.005 min
 Response: 45079928
 Conc: 20.39 ng/ml

Instrument :
 ECD_P
 ClientSampleId :
 TP-11



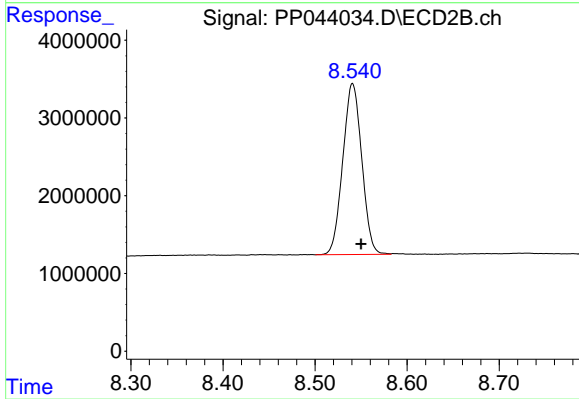
#1 Tetrachloro-m-xylene

R.T.: 3.171 min
 Delta R.T.: -0.004 min
 Response: 41039882
 Conc: 21.85 ng/ml



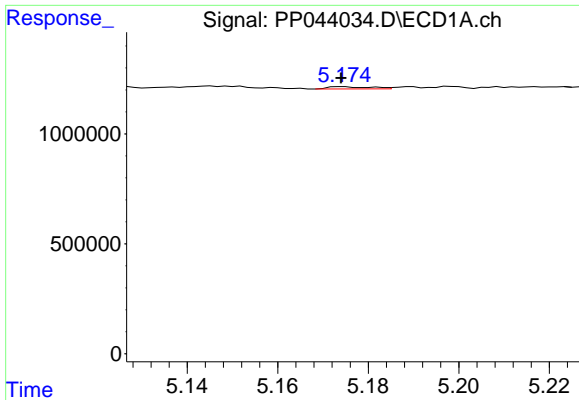
#2 Decachlorobiphenyl

R.T.: 10.055 min
 Delta R.T.: -0.005 min
 Response: 23948255
 Conc: 20.16 ng/ml



#2 Decachlorobiphenyl

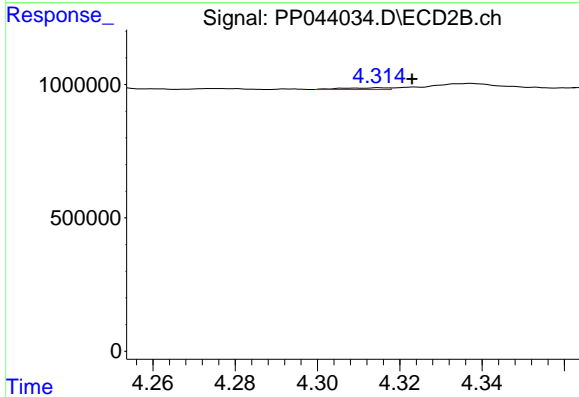
R.T.: 8.541 min
 Delta R.T.: -0.009 min
 Response: 31478012
 Conc: 19.40 ng/ml



#3 AR-1016-1

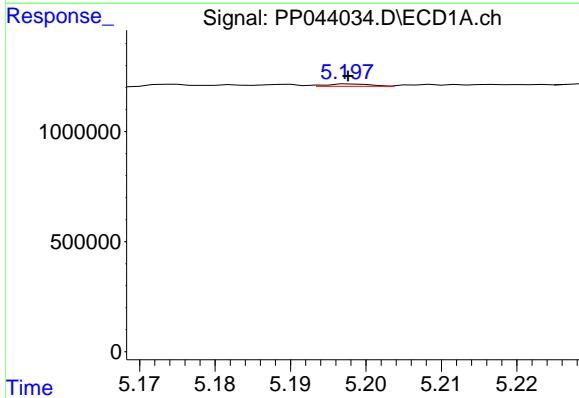
R.T.: 5.174 min
 Delta R.T.: 0.000 min
 Response: 65722
 Conc: 0.91 ng/ml

Instrument :
 ECD_P
 ClientSampleId :
 TP-11



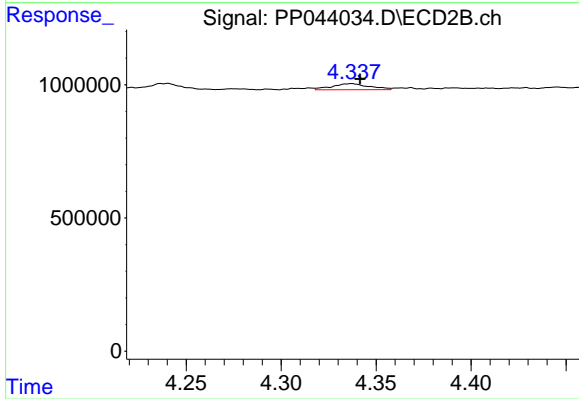
#3 AR-1016-1

R.T.: 4.315 min
 Delta R.T.: -0.008 min
 Response: 49750
 Conc: 0.81 ng/ml



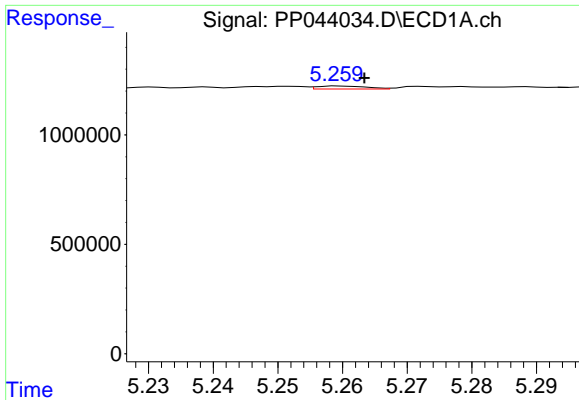
#4 AR-1016-2

R.T.: 5.198 min
 Delta R.T.: 0.000 min
 Response: 43477
 Conc: 0.41 ng/ml



#4 AR-1016-2

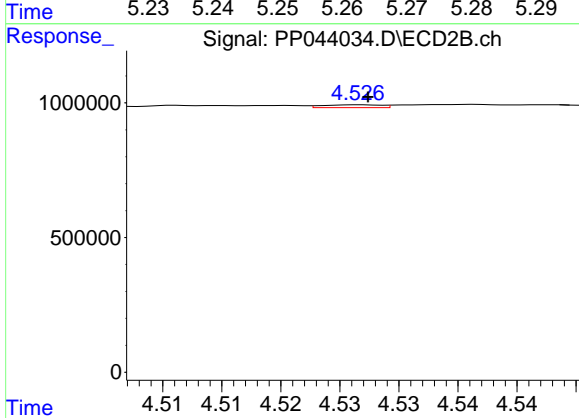
R.T.: 4.337 min
 Delta R.T.: -0.004 min
 Response: 313366
 Conc: 3.71 ng/ml



#5 AR-1016-3

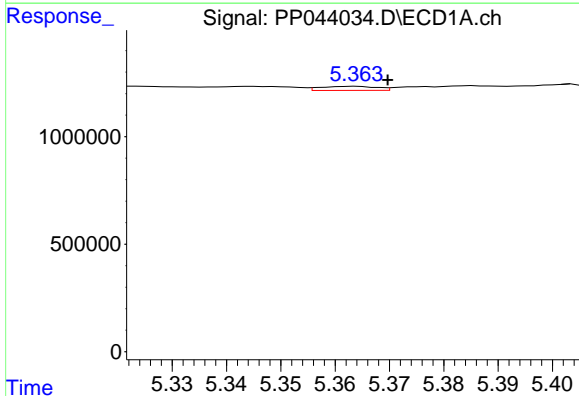
R.T.: 5.260 min
 Delta R.T.: -0.004 min
 Response: 73029
 Conc: 1.11 ng/ml

Instrument :
 ECD_P
 ClientSampleId :
 TP-11



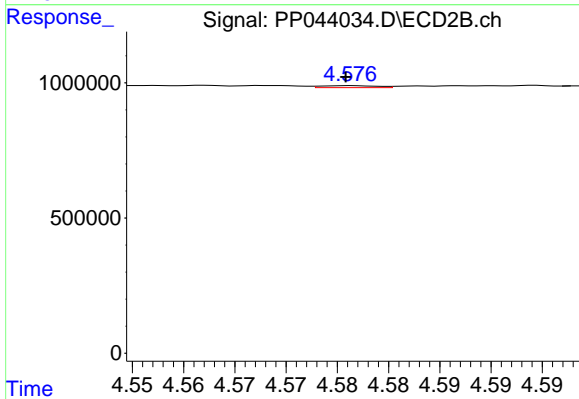
#5 AR-1016-3

R.T.: 4.527 min
 Delta R.T.: 0.000 min
 Response: 36499
 Conc: 0.78 ng/ml



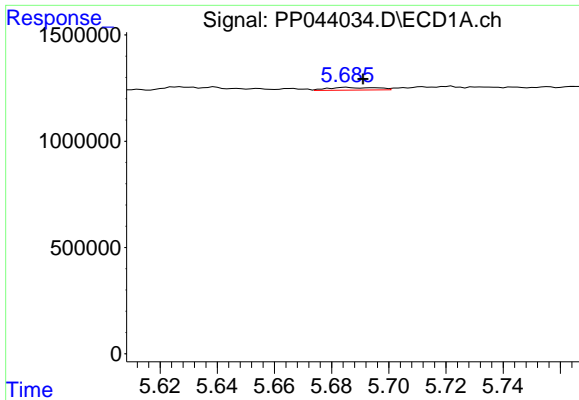
#6 AR-1016-4

R.T.: 5.364 min
 Delta R.T.: -0.006 min
 Response: 134232
 Conc: 2.48 ng/ml



#6 AR-1016-4

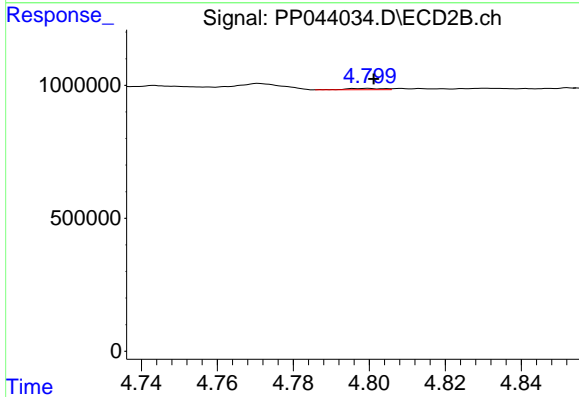
R.T.: 4.576 min
 Delta R.T.: 0.000 min
 Response: 26788
 Conc: 0.72 ng/ml



#7 AR-1016-5

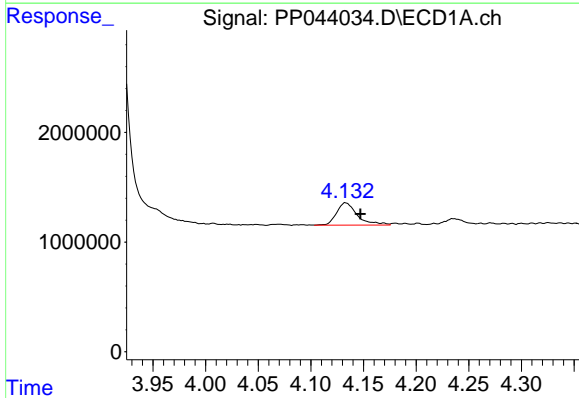
R.T.: 5.685 min
 Delta R.T.: -0.006 min
 Response: 150435
 Conc: 2.86 ng/ml

Instrument :
 ECD_P
 ClientSampleId :
 TP-11



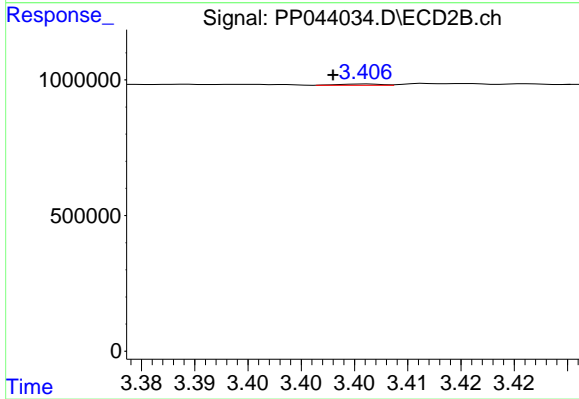
#7 AR-1016-5

R.T.: 4.800 min
 Delta R.T.: -0.002 min
 Response: 34739
 Conc: 0.76 ng/ml



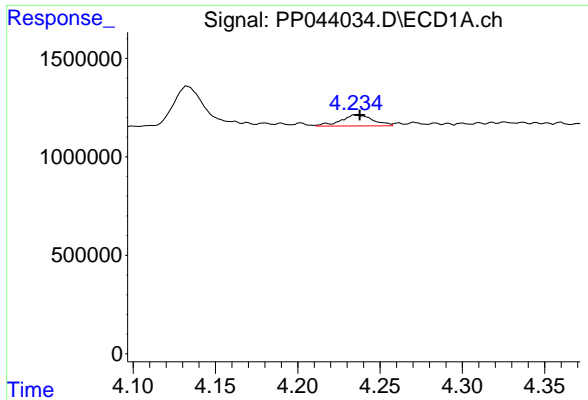
#8 AR-1221-1

R.T.: 4.133 min
 Delta R.T.: -0.014 min
 Response: 2806514
 Conc: 110.24 ng/ml



#8 AR-1221-1

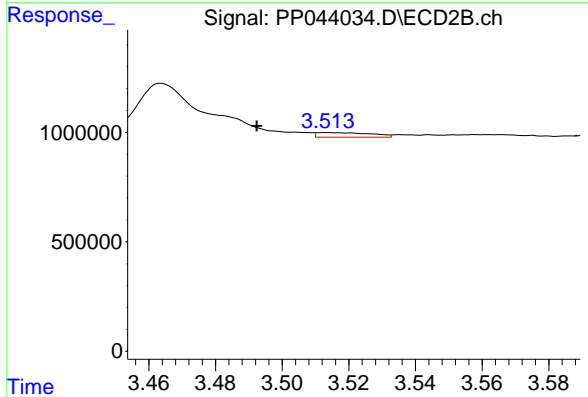
R.T.: 3.406 min
 Delta R.T.: 0.003 min
 Response: 13560
 Conc: 0.57 ng/ml



#9 AR-1221-2

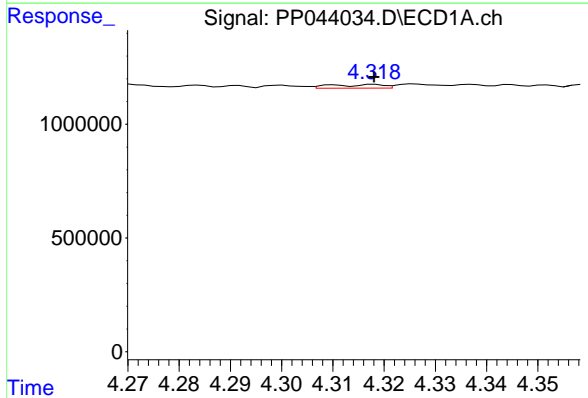
R.T.: 4.236 min
 Delta R.T.: -0.002 min
 Response: 768478
 Conc: 40.03 ng/ml

Instrument :
 ECD_P
 ClientSampleId :
 TP-11



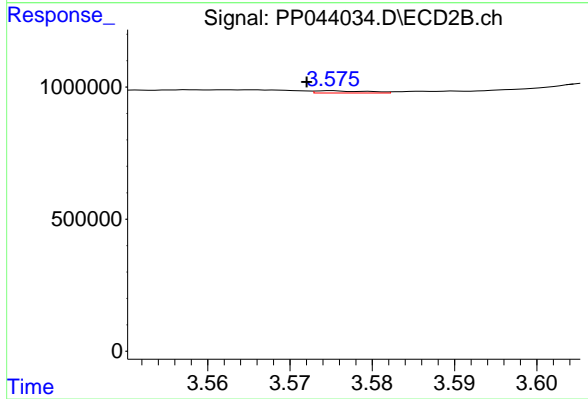
#9 AR-1221-2

R.T.: 3.513 min
 Delta R.T.: 0.021 min
 Response: 237199
 Conc: 13.13 ng/ml



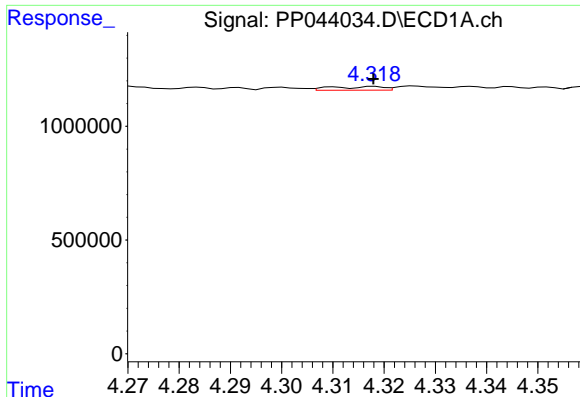
#10 AR-1221-3

R.T.: 4.318 min
 Delta R.T.: 0.000 min
 Response: 114661
 Conc: 2.00 ng/ml



#10 AR-1221-3

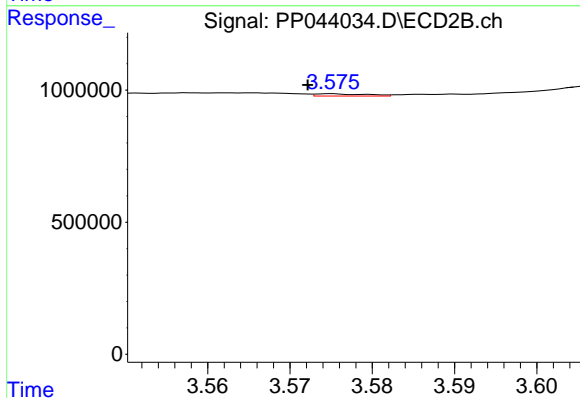
R.T.: 3.575 min
 Delta R.T.: 0.003 min
 Response: 37861
 Conc: 0.73 ng/ml



#11 AR-1232-1

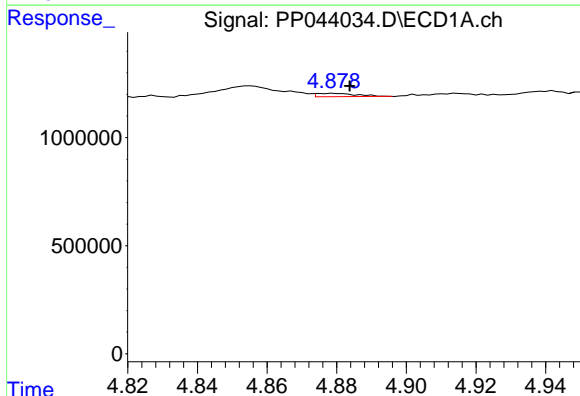
R.T.: 4.318 min
 Delta R.T.: 0.000 min
 Response: 114661
 Conc: 2.36 ng/ml

Instrument :
 ECD_P
 ClientSampleId :
 TP-11



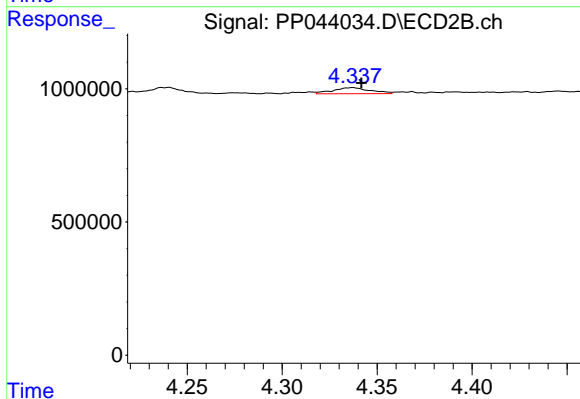
#11 AR-1232-1

R.T.: 3.575 min
 Delta R.T.: 0.003 min
 Response: 37861
 Conc: 0.88 ng/ml



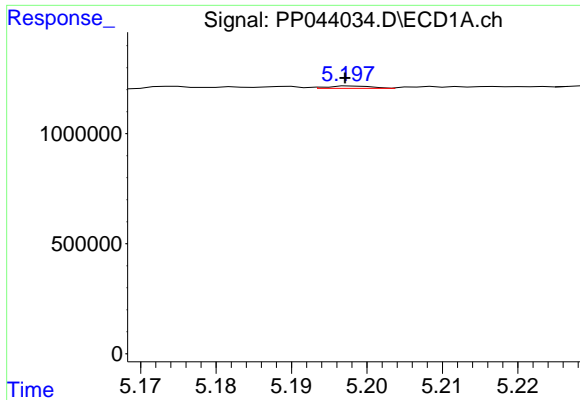
#12 AR-1232-2

R.T.: 4.879 min
 Delta R.T.: -0.005 min
 Response: 123789
 Conc: 5.22 ng/ml



#12 AR-1232-2

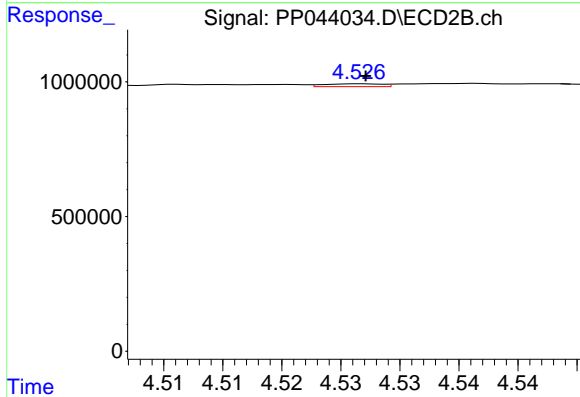
R.T.: 4.337 min
 Delta R.T.: -0.004 min
 Response: 313366
 Conc: 8.78 ng/ml



#13 AR-1232-3

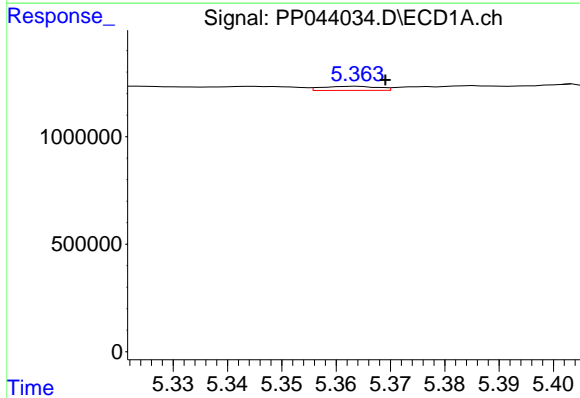
R.T.: 5.198 min
 Delta R.T.: 0.001 min
 Response: 43477
 Conc: 1.01 ng/ml

Instrument :
 ECD_P
 ClientSampleId :
 TP-11



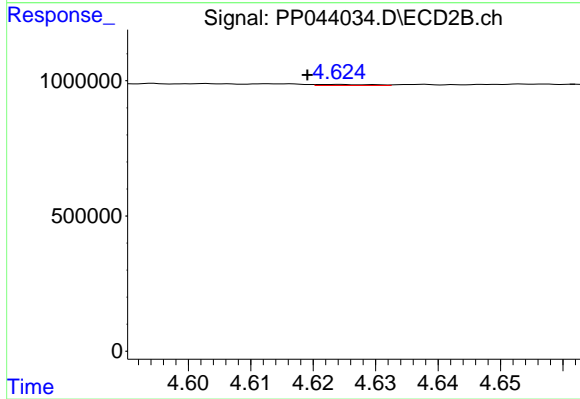
#13 AR-1232-3

R.T.: 4.527 min
 Delta R.T.: 0.000 min
 Response: 36499
 Conc: 1.87 ng/ml



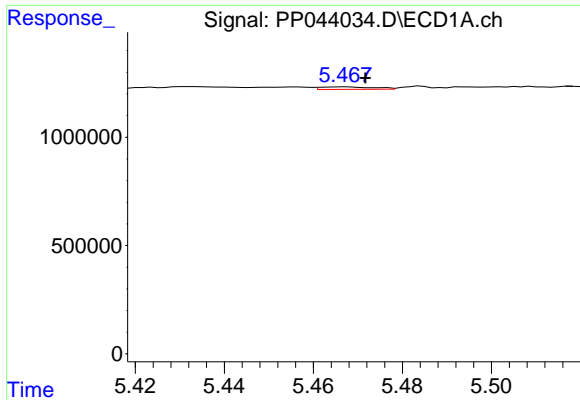
#14 AR-1232-4

R.T.: 5.364 min
 Delta R.T.: -0.005 min
 Response: 134232
 Conc: 6.15 ng/ml



#14 AR-1232-4

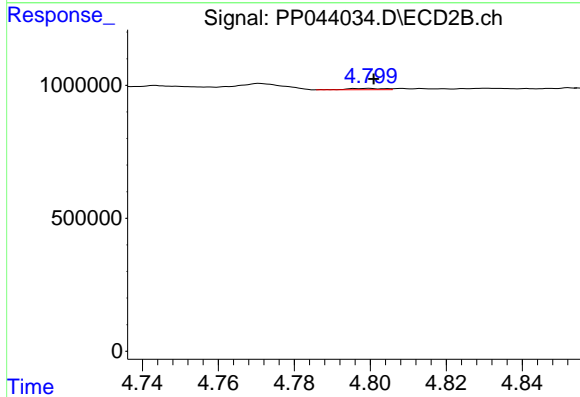
R.T.: 4.624 min
 Delta R.T.: 0.005 min
 Response: 23888
 Conc: 1.38 ng/ml



#15 AR-1232-5

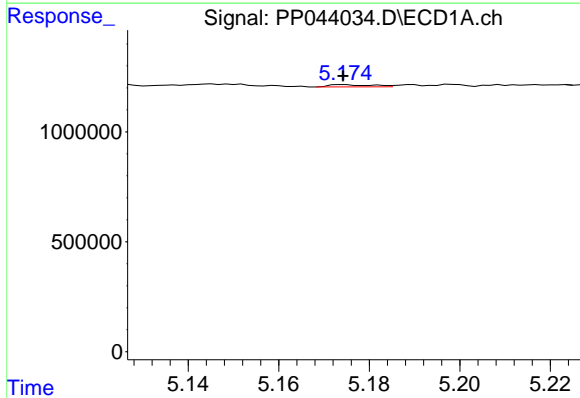
R.T.: 5.467 min
 Delta R.T.: -0.005 min
 Response: 93480
 Conc: 5.80 ng/ml

Instrument :
 ECD_P
 ClientSampleId :
 TP-11



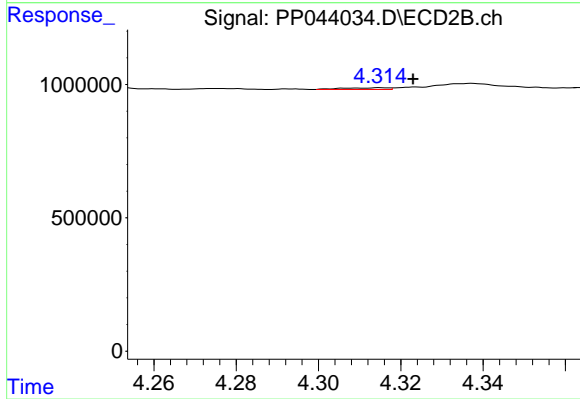
#15 AR-1232-5

R.T.: 4.800 min
 Delta R.T.: -0.001 min
 Response: 34739
 Conc: 1.85 ng/ml



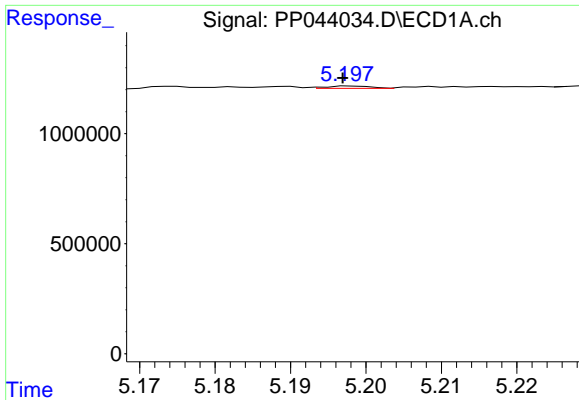
#16 AR-1242-1

R.T.: 5.174 min
 Delta R.T.: 0.000 min
 Response: 65722
 Conc: 1.17 ng/ml



#16 AR-1242-1

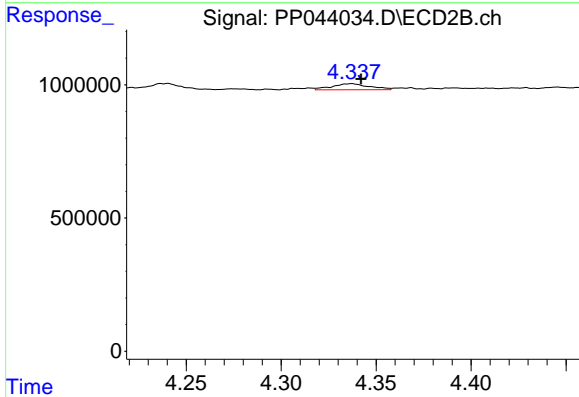
R.T.: 4.315 min
 Delta R.T.: -0.008 min
 Response: 49750
 Conc: 1.02 ng/ml



#17 AR-1242-2

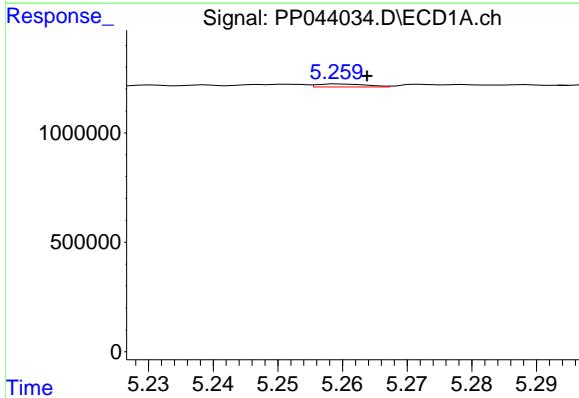
R.T.: 5.198 min
 Delta R.T.: 0.002 min
 Response: 43477
 Conc: 0.53 ng/ml

Instrument :
 ECD_P
 ClientSampleId :
 TP-11



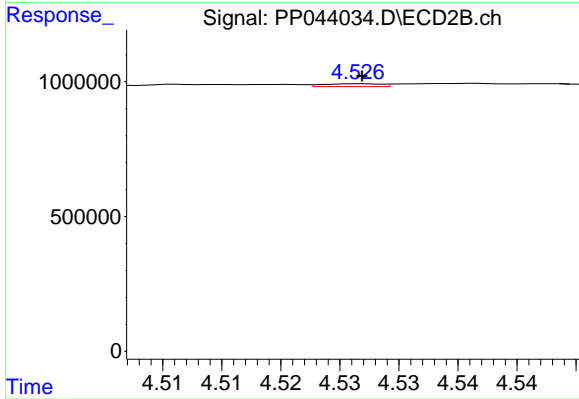
#17 AR-1242-2

R.T.: 4.337 min
 Delta R.T.: -0.005 min
 Response: 313366
 Conc: 4.65 ng/ml



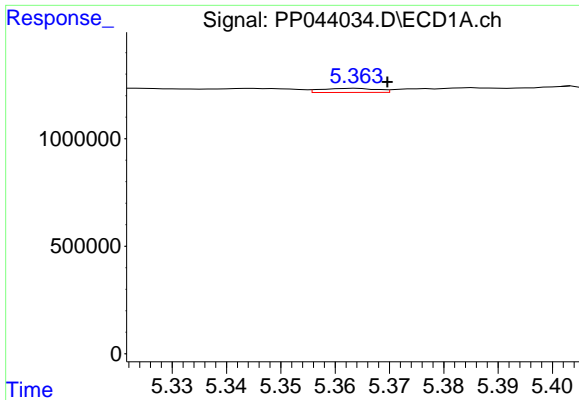
#18 AR-1242-3

R.T.: 5.260 min
 Delta R.T.: -0.004 min
 Response: 73029
 Conc: 1.41 ng/ml



#18 AR-1242-3

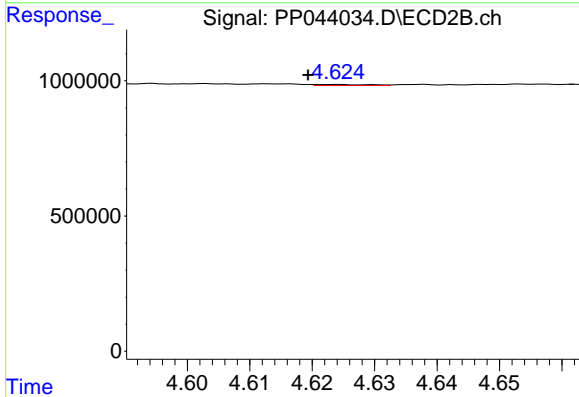
R.T.: 4.527 min
 Delta R.T.: 0.000 min
 Response: 36499
 Conc: 0.97 ng/ml



#19 AR-1242-4

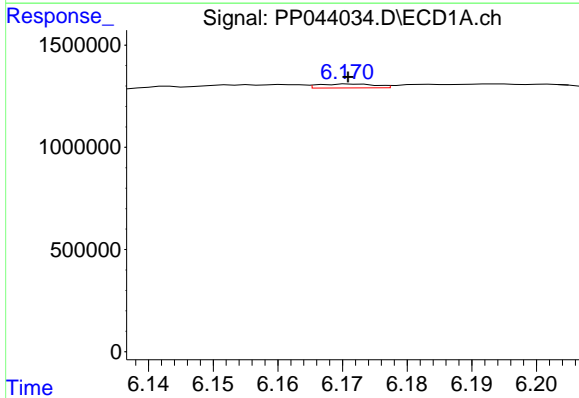
R.T.: 5.364 min
 Delta R.T.: -0.006 min
 Response: 134232
 Conc: 3.14 ng/ml

Instrument :
 ECD_P
 ClientSampleId :
 TP-11



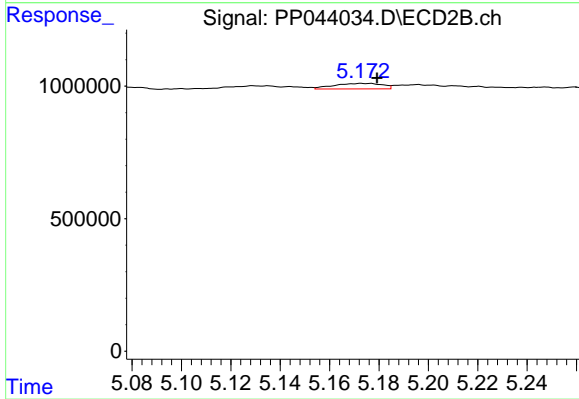
#19 AR-1242-4

R.T.: 4.624 min
 Delta R.T.: 0.005 min
 Response: 23888
 Conc: 0.66 ng/ml



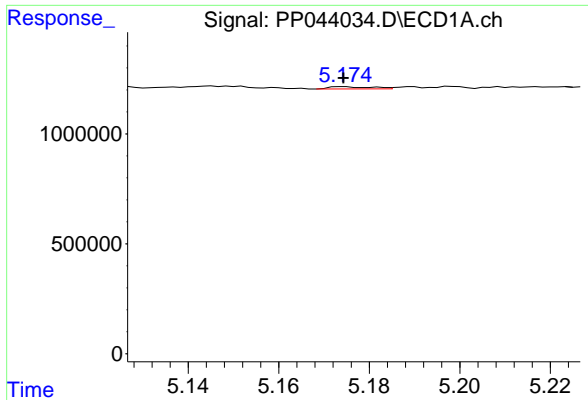
#20 AR-1242-5

R.T.: 6.172 min
 Delta R.T.: 0.000 min
 Response: 119317
 Conc: 2.76 ng/ml



#20 AR-1242-5

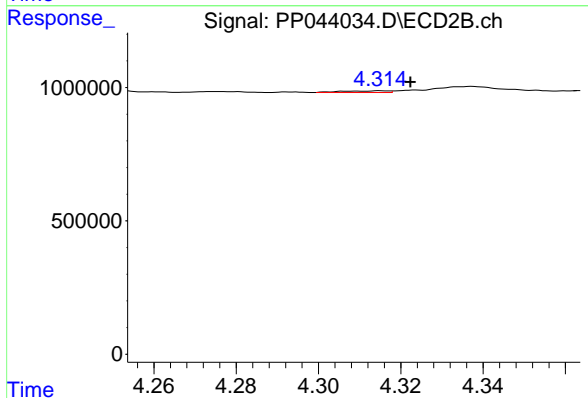
R.T.: 5.173 min
 Delta R.T.: -0.006 min
 Response: 288732
 Conc: 6.71 ng/ml



#21 AR-1248-1

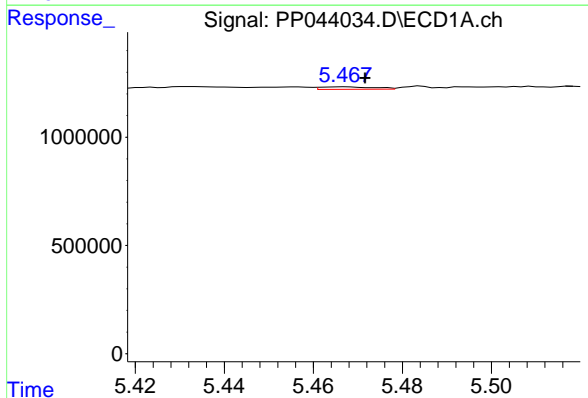
R.T.: 5.174 min
 Delta R.T.: 0.000 min
 Response: 65722
 Conc: 1.60 ng/ml

Instrument :
 ECD_P
 ClientSampleId :
 TP-11



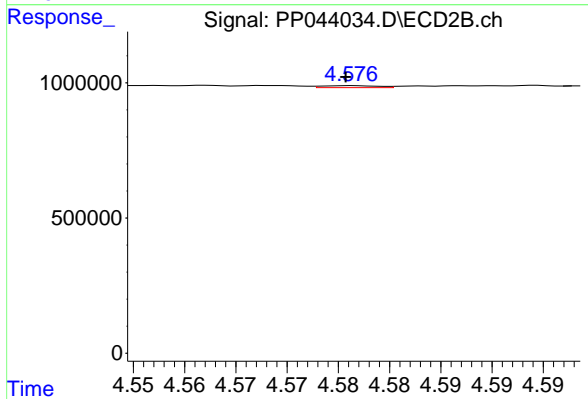
#21 AR-1248-1

R.T.: 4.315 min
 Delta R.T.: -0.007 min
 Response: 49750
 Conc: 1.34 ng/ml



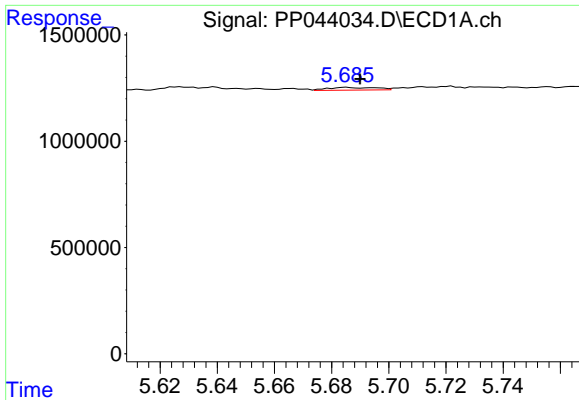
#22 AR-1248-2

R.T.: 5.467 min
 Delta R.T.: -0.005 min
 Response: 93480
 Conc: 1.65 ng/ml



#22 AR-1248-2

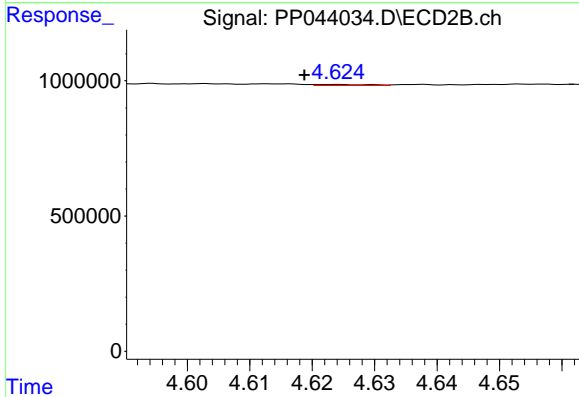
R.T.: 4.576 min
 Delta R.T.: 0.000 min
 Response: 26788
 Conc: 0.55 ng/ml



#23 AR-1248-3

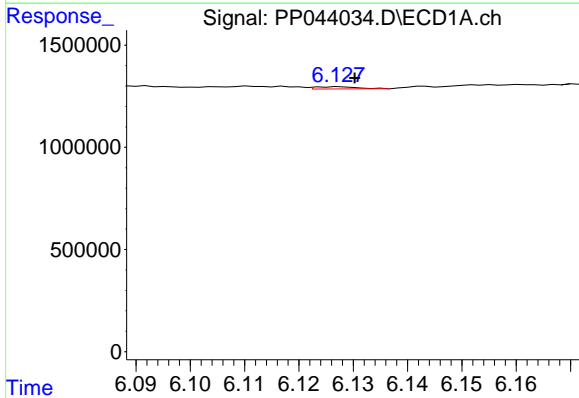
R.T.: 5.685 min
 Delta R.T.: -0.005 min
 Response: 150435
 Conc: 2.25 ng/ml

Instrument :
 ECD_P
 ClientSampleId :
 TP-11



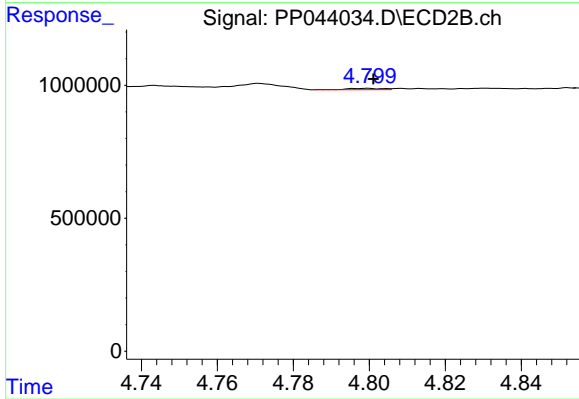
#23 AR-1248-3

R.T.: 4.624 min
 Delta R.T.: 0.005 min
 Response: 23888
 Conc: 0.47 ng/ml



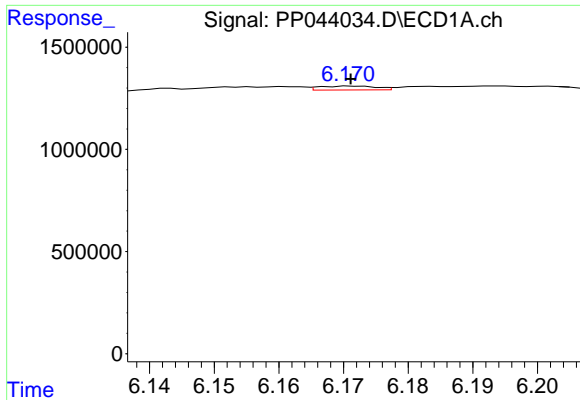
#24 AR-1248-4

R.T.: 6.127 min
 Delta R.T.: -0.003 min
 Response: 59174
 Conc: 0.85 ng/ml



#24 AR-1248-4

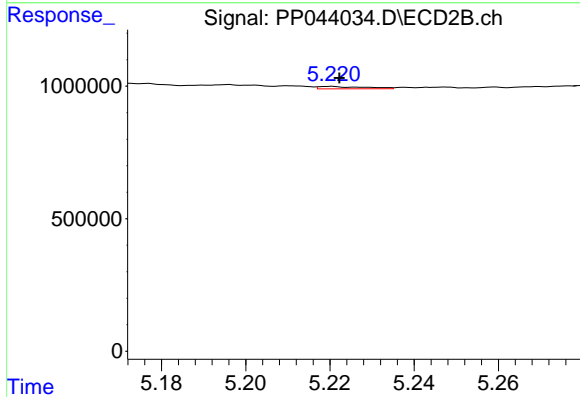
R.T.: 4.800 min
 Delta R.T.: -0.001 min
 Response: 34739
 Conc: 0.59 ng/ml



#25 AR-1248-5

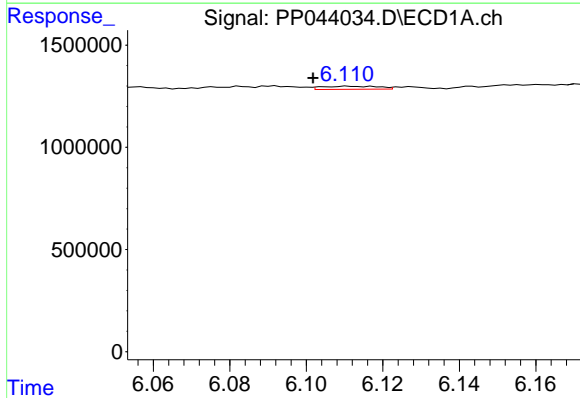
R.T.: 6.172 min
 Delta R.T.: 0.000 min
 Response: 119317
 Conc: 1.73 ng/ml

Instrument :
 ECD_P
 ClientSampleId :
 TP-11



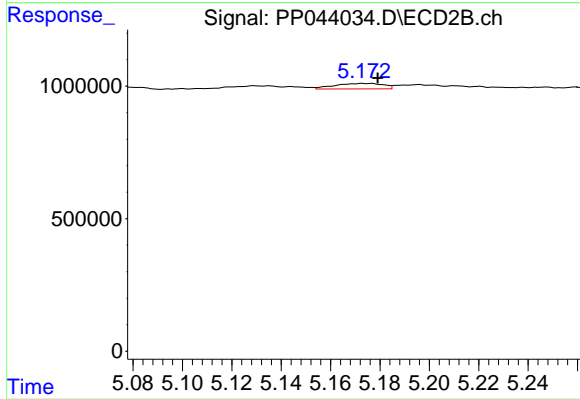
#25 AR-1248-5

R.T.: 5.220 min
 Delta R.T.: -0.002 min
 Response: 67620
 Conc: 1.18 ng/ml



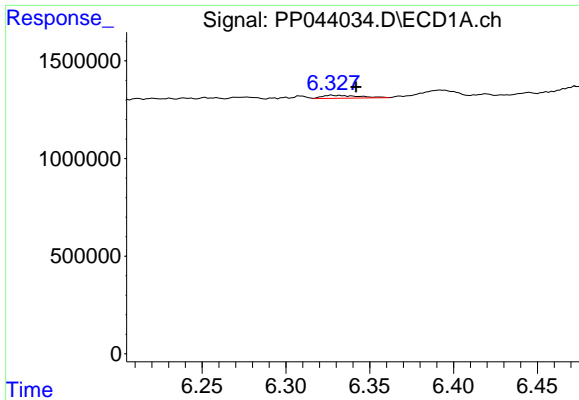
#26 AR-1254-1

R.T.: 6.111 min
 Delta R.T.: 0.009 min
 Response: 154224
 Conc: 2.04 ng/ml



#26 AR-1254-1

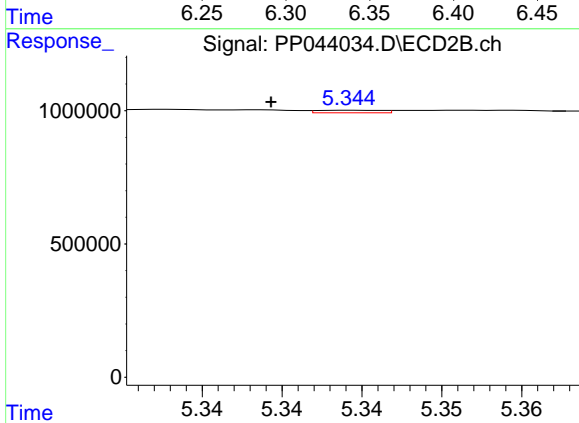
R.T.: 5.173 min
 Delta R.T.: -0.006 min
 Response: 288732
 Conc: 3.31 ng/ml



#27 AR-1254-2

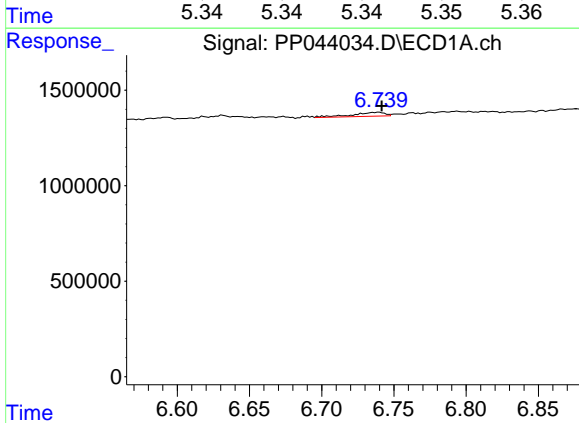
R.T.: 6.328 min
 Delta R.T.: -0.014 min
 Response: 237454
 Conc: 2.12 ng/ml

Instrument :
 ECD_P
 ClientSampleId :
 TP-11



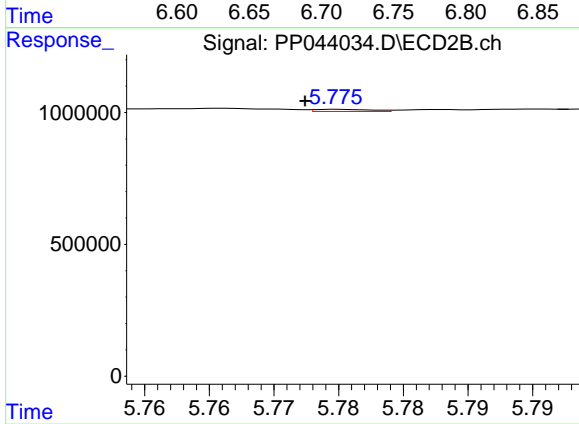
#27 AR-1254-2

R.T.: 5.345 min
 Delta R.T.: 0.005 min
 Response: 26440
 Conc: 0.35 ng/ml



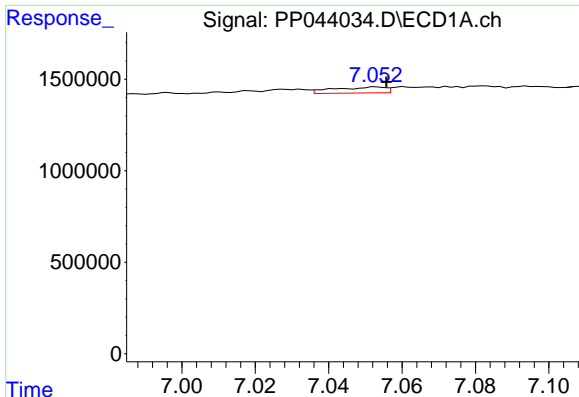
#28 AR-1254-3

R.T.: 6.740 min
 Delta R.T.: -0.002 min
 Response: 316403
 Conc: 2.73 ng/ml



#28 AR-1254-3

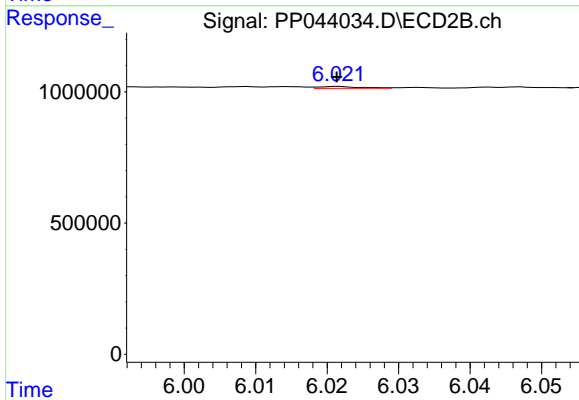
R.T.: 5.775 min
 Delta R.T.: 0.003 min
 Response: 24648
 Conc: 0.20 ng/ml



#29 AR-1254-4

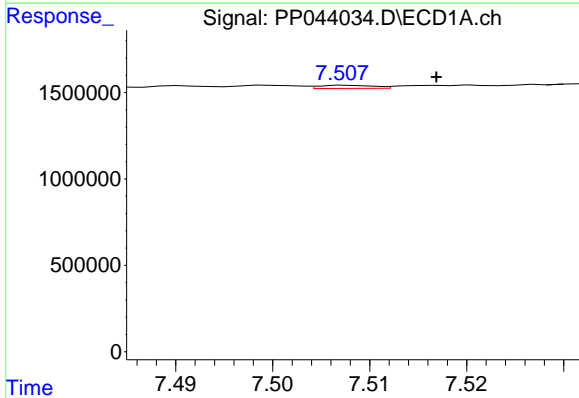
R.T.: 7.053 min
 Delta R.T.: -0.003 min
 Response: 318716
 Conc: 3.99 ng/ml

Instrument :
 ECD_P
 ClientSampleId :
 TP-11



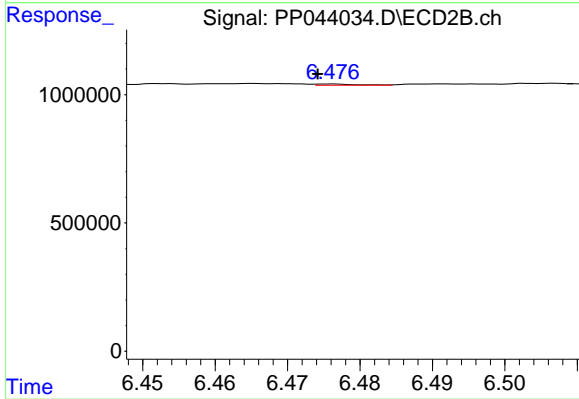
#29 AR-1254-4

R.T.: 6.022 min
 Delta R.T.: 0.000 min
 Response: 27655
 Conc: 0.35 ng/ml



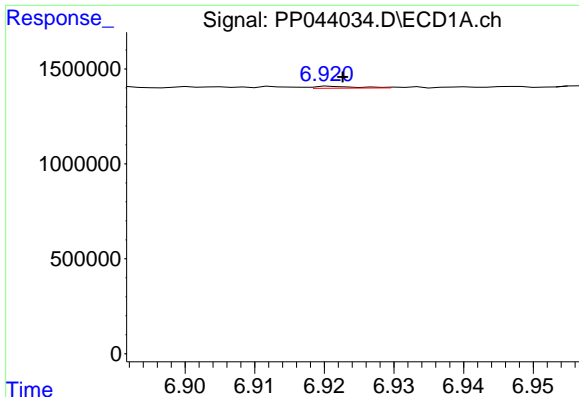
#30 AR-1254-5

R.T.: 7.508 min
 Delta R.T.: -0.009 min
 Response: 70862
 Conc: 0.83 ng/ml



#30 AR-1254-5

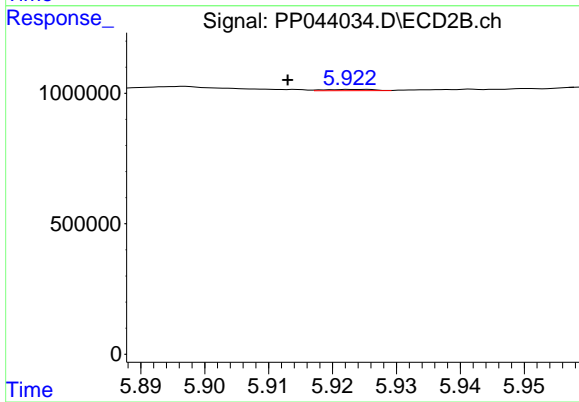
R.T.: 6.476 min
 Delta R.T.: 0.002 min
 Response: 16752
 Conc: 0.14 ng/ml



#31 AR-1260-1

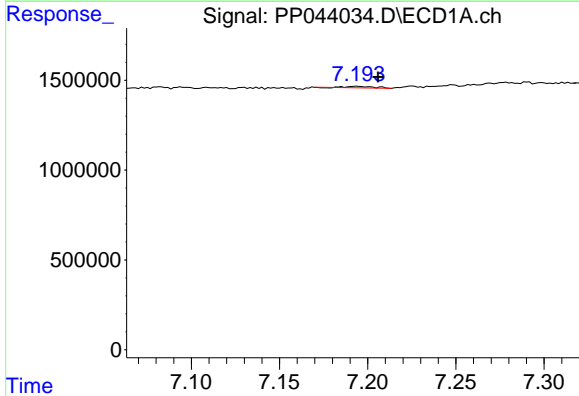
R.T.: 6.921 min
 Delta R.T.: -0.001 min
 Response: 42298
 Conc: 0.51 ng/ml

Instrument :
 ECD_P
 ClientSampleId :
 TP-11



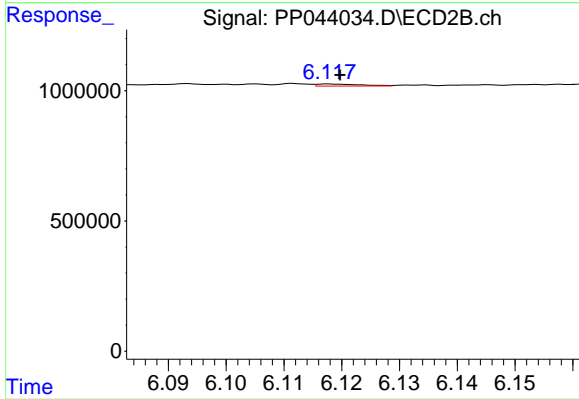
#31 AR-1260-1

R.T.: 5.923 min
 Delta R.T.: 0.010 min
 Response: 27349
 Conc: 0.34 ng/ml



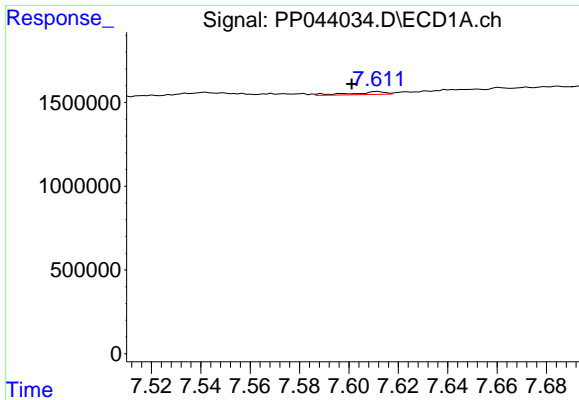
#32 AR-1260-2

R.T.: 7.194 min
 Delta R.T.: -0.012 min
 Response: 85447
 Conc: 0.94 ng/ml



#32 AR-1260-2

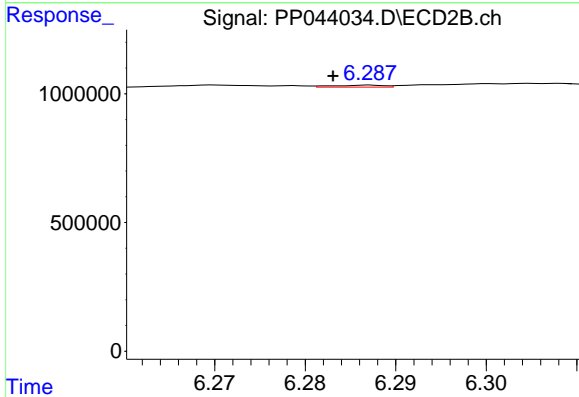
R.T.: 6.118 min
 Delta R.T.: -0.002 min
 Response: 40368
 Conc: 0.41 ng/ml



#33 AR-1260-3

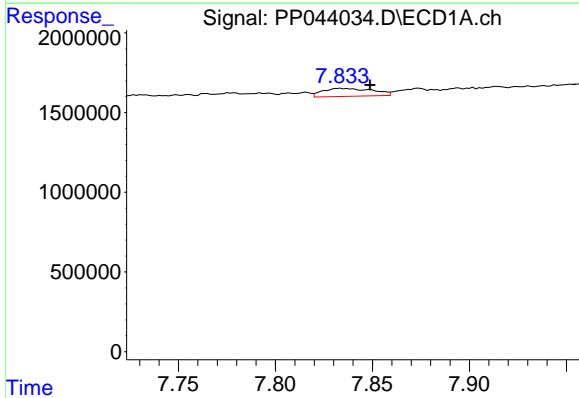
R.T.: 7.612 min
 Delta R.T.: 0.011 min
 Response: 155710
 Conc: 2.15 ng/ml

Instrument :
 ECD_P
 ClientSampleId :
 TP-11



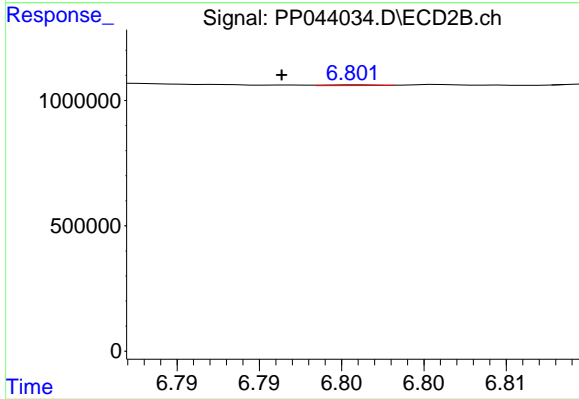
#33 AR-1260-3

R.T.: 6.287 min
 Delta R.T.: 0.004 min
 Response: 29261
 Conc: 0.32 ng/ml



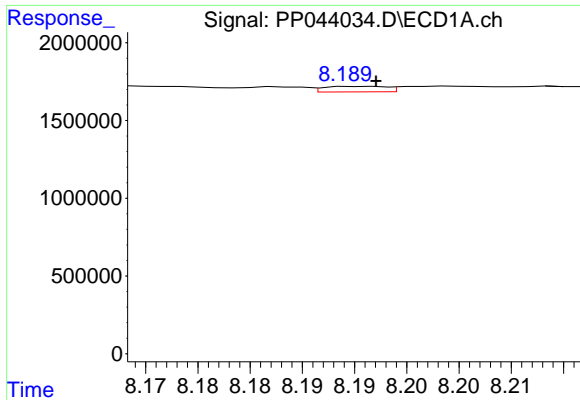
#34 AR-1260-4

R.T.: 7.834 min
 Delta R.T.: -0.015 min
 Response: 895180
 Conc: 10.43 ng/ml



#34 AR-1260-4

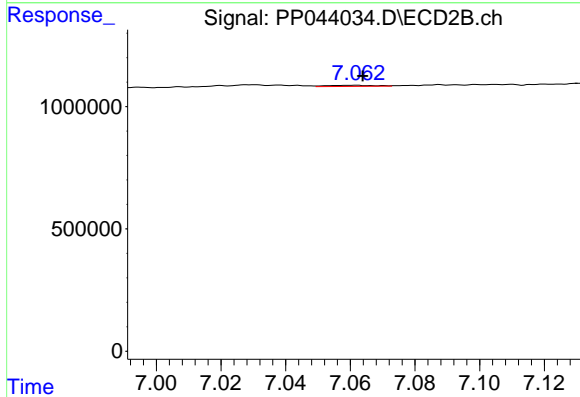
R.T.: 6.801 min
 Delta R.T.: 0.005 min
 Response: 6466
 Conc: 0.08 ng/ml



#35 AR-1260-5

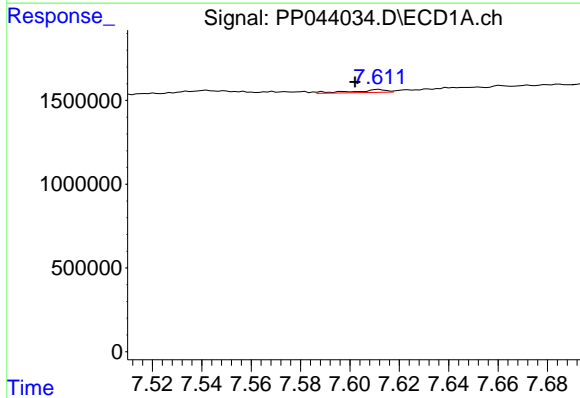
R.T.: 8.191 min
 Delta R.T.: -0.001 min
 Response: 146413
 Conc: 0.94 ng/ml

Instrument :
 ECD_P
 ClientSampleId :
 TP-11



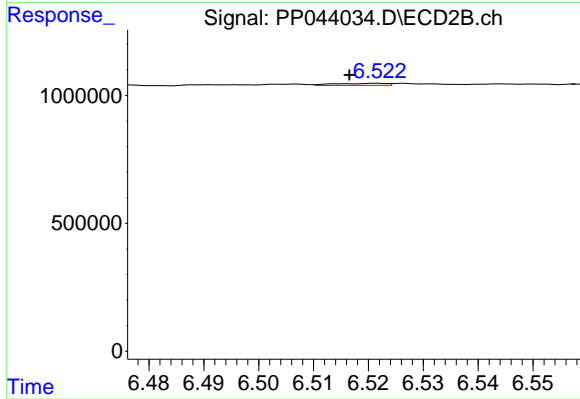
#35 AR-1260-5

R.T.: 7.062 min
 Delta R.T.: -0.002 min
 Response: 48642
 Conc: 0.26 ng/ml



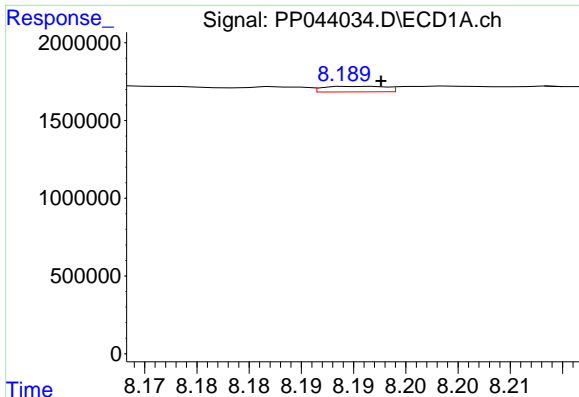
#36 AR-1262-1

R.T.: 7.612 min
 Delta R.T.: 0.010 min
 Response: 155710
 Conc: 1.58 ng/ml



#36 AR-1262-1

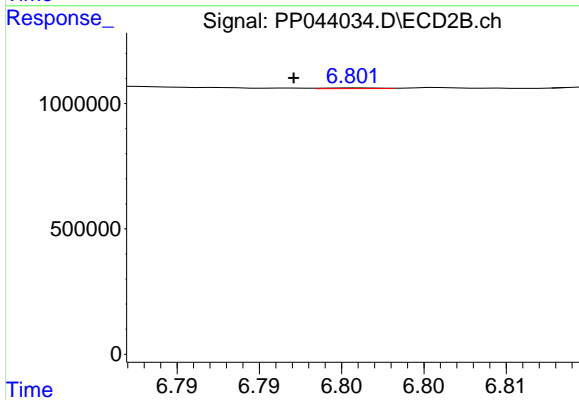
R.T.: 6.522 min
 Delta R.T.: 0.005 min
 Response: 52749
 Conc: 0.48 ng/ml



#37 AR-1262-2

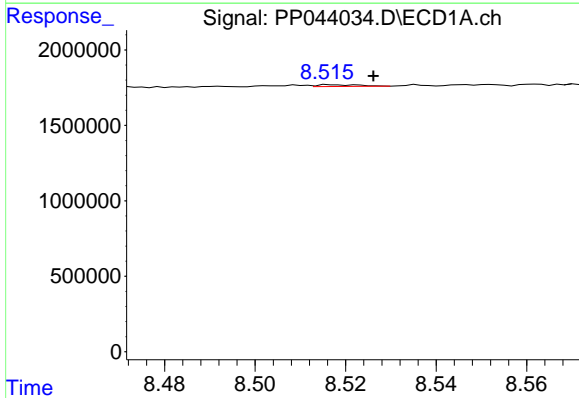
R.T.: 8.191 min
 Delta R.T.: -0.002 min
 Response: 146413
 Conc: 0.91 ng/ml

Instrument :
 ECD_P
 ClientSampleId :
 TP-11



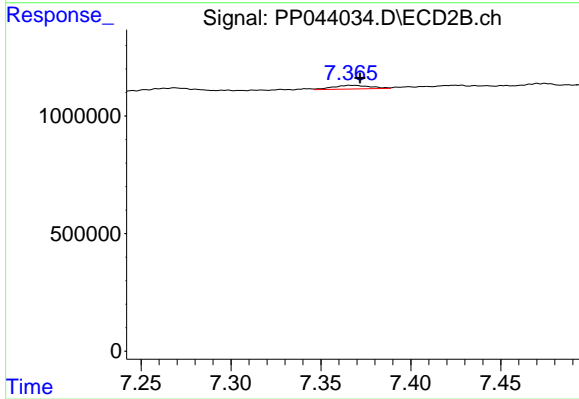
#37 AR-1262-2

R.T.: 6.801 min
 Delta R.T.: 0.004 min
 Response: 6466
 Conc: 0.06 ng/ml



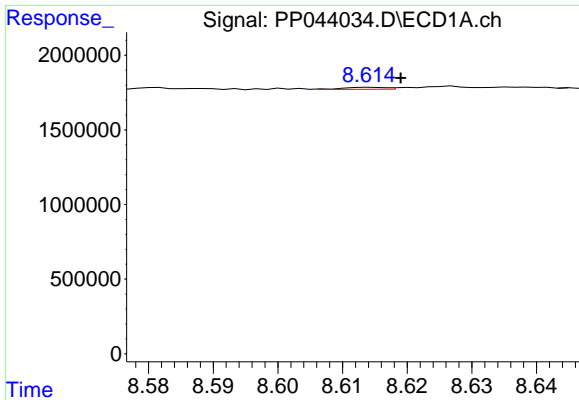
#38 AR-1262-3

R.T.: 8.517 min
 Delta R.T.: -0.009 min
 Response: 75260
 Conc: 0.69 ng/ml



#38 AR-1262-3

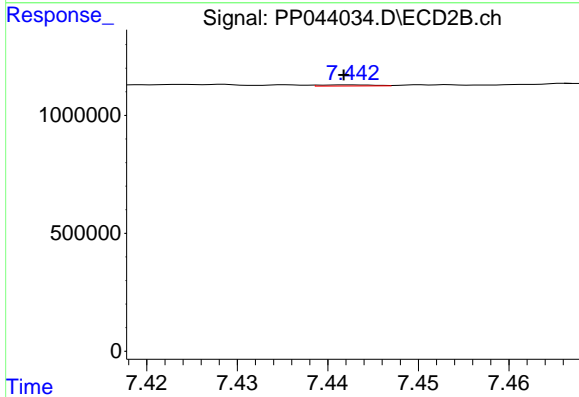
R.T.: 7.366 min
 Delta R.T.: -0.006 min
 Response: 220697
 Conc: 2.59 ng/ml



#39 AR-1262-4

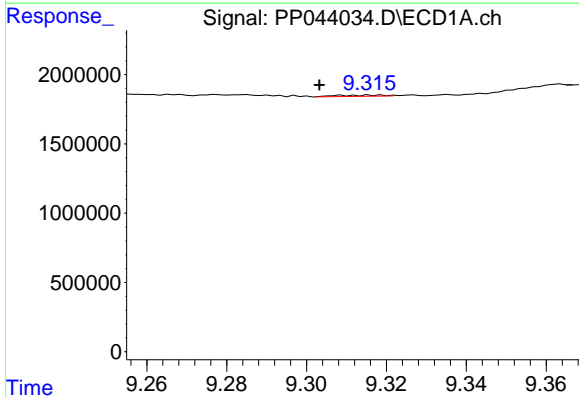
R.T.: 8.615 min
 Delta R.T.: -0.004 min
 Response: 58318
 Conc: 1.22 ng/ml

Instrument :
 ECD_P
 ClientSampleId :
 TP-11



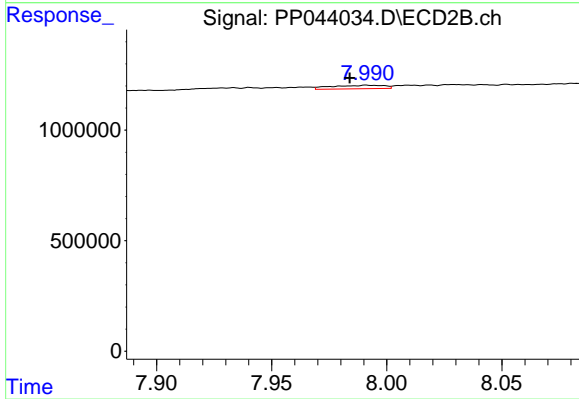
#39 AR-1262-4

R.T.: 7.443 min
 Delta R.T.: 0.000 min
 Response: 18052
 Conc: 0.12 ng/ml



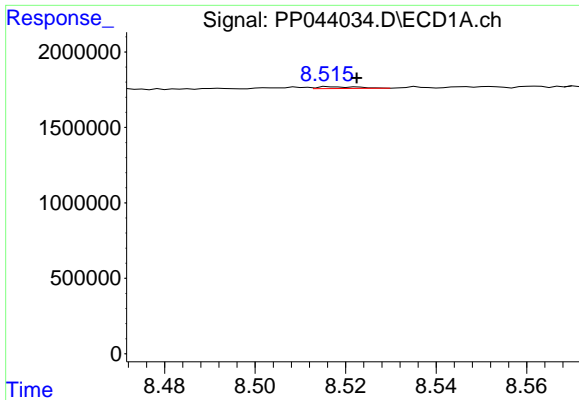
#40 AR-1262-5

R.T.: 9.309 min
 Delta R.T.: 0.006 min
 Response: 70402
 Conc: 1.26 ng/ml



#40 AR-1262-5

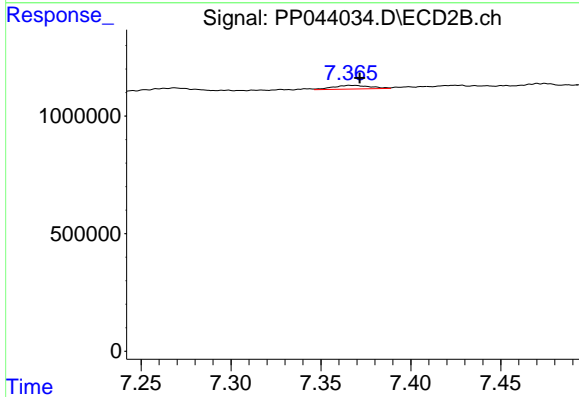
R.T.: 7.991 min
 Delta R.T.: 0.007 min
 Response: 253131
 Conc: 3.25 ng/ml



#41 AR-1268-1

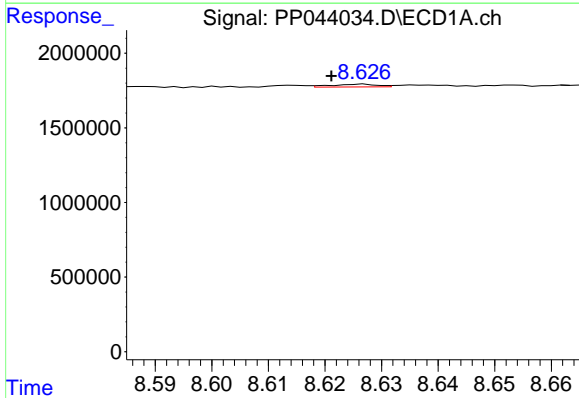
R.T.: 8.517 min
 Delta R.T.: -0.006 min
 Response: 75260
 Conc: 0.39 ng/ml

Instrument :
 ECD_P
 ClientSampleId :
 TP-11



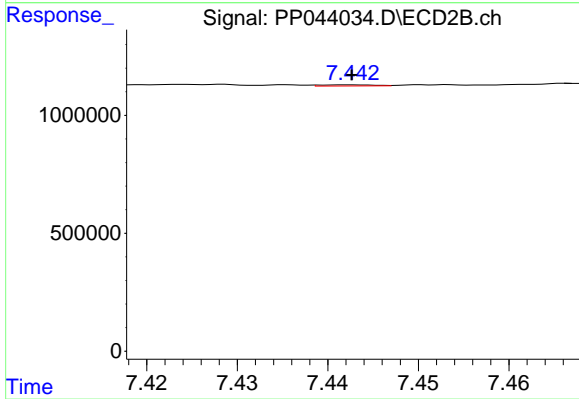
#41 AR-1268-1

R.T.: 7.366 min
 Delta R.T.: -0.006 min
 Response: 220697
 Conc: 0.87 ng/ml



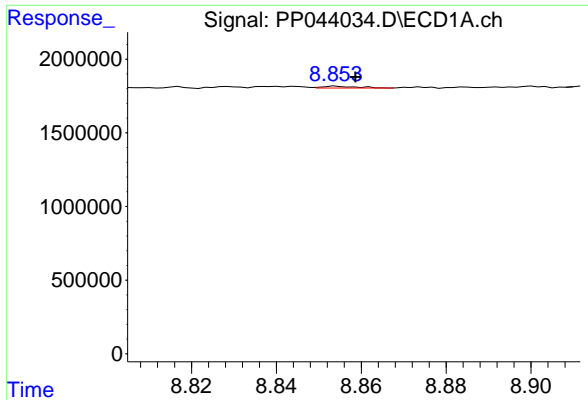
#42 AR-1268-2

R.T.: 8.627 min
 Delta R.T.: 0.006 min
 Response: 102944
 Conc: 0.59 ng/ml



#42 AR-1268-2

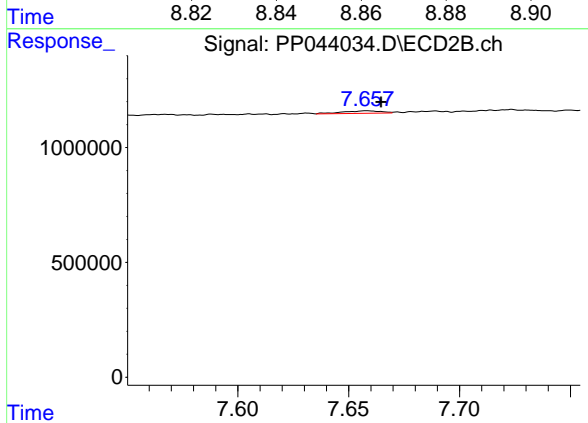
R.T.: 7.443 min
 Delta R.T.: 0.000 min
 Response: 18052
 Conc: 0.08 ng/ml



#43 AR-1268-3

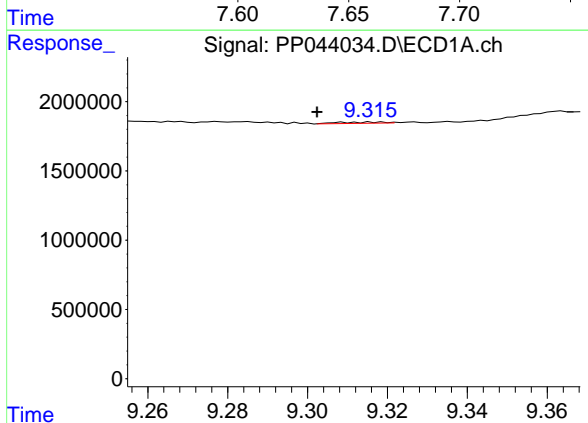
R.T.: 8.854 min
 Delta R.T.: -0.005 min
 Response: 64578
 Conc: 0.42 ng/ml

Instrument :
 ECD_P
 ClientSampleId :
 TP-11



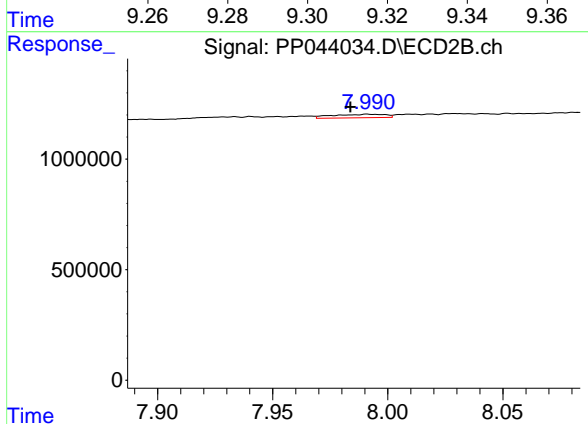
#43 AR-1268-3

R.T.: 7.658 min
 Delta R.T.: -0.007 min
 Response: 130138
 Conc: 0.67 ng/ml



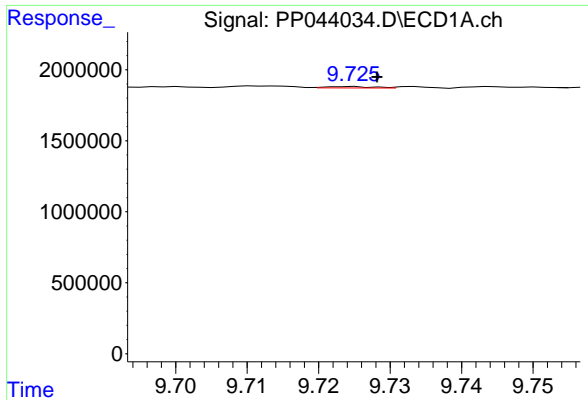
#44 AR-1268-4

R.T.: 9.309 min
 Delta R.T.: 0.007 min
 Response: 70402
 Conc: 1.13 ng/ml



#44 AR-1268-4

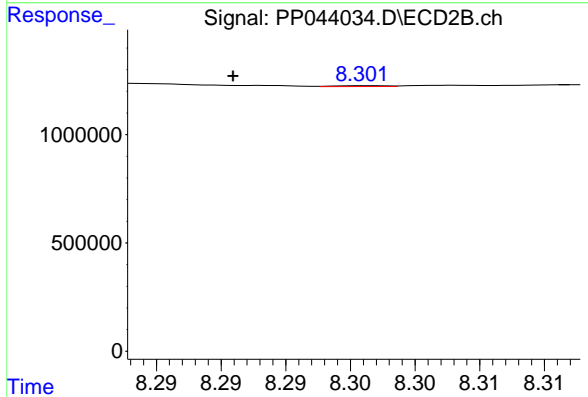
R.T.: 7.991 min
 Delta R.T.: 0.007 min
 Response: 253131
 Conc: 2.81 ng/ml



#45 AR-1268-5

R.T.: 9.725 min
 Delta R.T.: -0.004 min
 Response: 41277
 Conc: 0.09 ng/ml

Instrument :
 ECD_P
 ClientSampleId :
 TP-11



#45 AR-1268-5

R.T.: 8.301 min
 Delta R.T.: 0.010 min
 Response: 12379
 Conc: 0.02 ng/ml