

Data Path : Z:\pestpcbsrv\HPCHEM1\ECD_P\Data\PP022522\
 Data File : PP044052.D
 Signal(s) : Signal #1: ECD1A.ch Signal #2: ECD2B.ch
 Acq On : 26 Feb 2022 02:25
 Operator : YP\AJ
 Sample : AR1660CCC500
 Misc :
 ALS Vial : 3 Sample Multiplier: 1

Instrument :
 ECD_P
 ClientSampleId :

Integration File signal 1: autoint1.e
 Integration File signal 2: autoint2.e
 Quant Time: Feb 26 07:29:37 2022
 Quant Method : Z:\pestpcbsrv\HPCHEM1\ECD_P\methods\PP021022.M
 Quant Title : GC EXTRACTABLES
 QLast Update : Fri Feb 11 04:48:05 2022
 Response via : Initial Calibration
 Integrator: ChemStation

Volume Inj. : 2 µl
 Signal #1 Phase : ZB-MR1 Signal #2 Phase: ZB-MR2
 Signal #1 Info : 30Mx0.32mmx 0.50µ Signal #2 Info : 30M x 0.32mm x 0.25µm

Compound	RT#1	RT#2	Resp#1	Resp#2	ng/ml	ng/ml
System Monitoring Compounds						
1) SA Tetrachlo...	3.914	3.170	108.5E6	94209229	49.056	50.157
2) SA Decachlor...	10.053	8.540	62201972	76528041	52.364	47.170
Target Compounds						
3) L1 AR-1016-1	5.166	4.316	33809670	29644472	465.940	483.839
4) L1 AR-1016-2	5.190	4.334	49600847	41895810	470.281	495.873
5) L1 AR-1016-3	5.256	4.519	31274553	23994818	474.972	513.622
6) L1 AR-1016-4	5.361	4.568	25943052	19327255	478.387	517.173
7) L1 AR-1016-5	5.682	4.794	25968411	19532248	494.374	427.564
8) L2 AR-1221-1	4.135	3.397	3583290	3748773	140.746	157.158
9) L2 AR-1221-2	4.232	3.487	5260636	5319922	274.015	294.568
10) L2 AR-1221-3	4.312	3.566	19897463	18852030	346.369	365.437
11) L3 AR-1232-1	4.312	3.566	19897463	18852030	409.987	438.163
12) L3 AR-1232-2	4.876	4.334	26436234	41895810	1115.586	1173.623
13) L3 AR-1232-3	5.190	4.519	49600847	23994818	1152.070	1227.095
14) L3 AR-1232-4	5.361	4.611	25943052	23171970	1188.506	1340.012
15) L3 AR-1232-5	5.464	4.794	21162789	19532248	1312.079	1039.825
16) L4 AR-1242-1	5.166	4.316	33809670	29644472	601.683	608.118
17) L4 AR-1242-2	5.190	4.334	49600847	41895810	599.522	622.200
18) L4 AR-1242-3	5.256	4.519	31274553	23994818	604.223	639.206
19) L4 AR-1242-4	5.361	4.611	25943052	23171970	607.388	641.714
20) L4 AR-1242-5	6.163	5.170	5581829	18971162	129.263	440.698 #
21) L5 AR-1248-1	5.166	4.316	33809670	29644472	824.674	795.820
22) L5 AR-1248-2	5.464	4.568	21162789	19327255	372.500	395.068
23) L5 AR-1248-3	5.682	4.611	25968411	23171970	389.236	451.562
24) L5 AR-1248-4	6.121	4.794	5359611	19532248	76.712	333.167 #
25) L5 AR-1248-5	6.163	5.211	5581829	4500649	80.743	78.549
26) L6 AR-1254-1	6.091	5.170	14457587	18971162	191.348	217.229
27) L6 AR-1254-2	6.331	5.330	19911325	19174729	177.513	251.382 #
28) L6 AR-1254-3	6.731	5.779	14766677	32263401	127.615	263.250 #
29) L6 AR-1254-4	7.044	6.011	10275915	6568896	128.717	83.230 #
30) L6 AR-1254-5	7.504	6.462	49855573	53712097	581.318	464.459
31) L7 AR-1260-1	6.911	5.903	44786122	43297549	534.810	541.423
32) L7 AR-1260-2	7.195	6.109	41824023	50274551	462.038	514.829
33) L7 AR-1260-3	7.589	6.272	33575557	47904809	463.184	524.747
34) L7 AR-1260-4	7.838	6.784	39189624	40032525	456.456	494.778
35) L7 AR-1260-5	8.180	7.052	72467868	90954983	467.513	492.007
36) L8 AR-1262-1	7.589	6.504	33575557	42423673	340.042	385.905
37) L8 AR-1262-2	8.180	6.784	72467868	40032525	448.880	392.460
38) L8 AR-1262-3	8.523	7.359	43917736	23008452	401.445	269.975 #
39) L8 AR-1262-4	8.604	7.429	12222343	69710170	254.863	448.834 #
40) L8 AR-1262-5	9.287f	7.972	17907026	27457026	321.556	352.945
41) L9 AR-1268-1	8.523	7.359	43917736	23008452	225.295	90.813 #

Data Path : Z:\pestpcbsrv\HPCHEM1\ECD_P\Data\PP022522\
 Data File : PP044052.D
 Signal(s) : Signal #1: ECD1A.ch Signal #2: ECD2B.ch
 Acq On : 26 Feb 2022 02:25
 Operator : YP\AJ
 Sample : AR1660CCC500
 Misc :
 ALS Vial : 3 Sample Multiplier: 1

Instrument :
 ECD_P
 ClientSampleId :

Integration File signal 1: autoint1.e
 Integration File signal 2: autoint2.e
 Quant Time: Feb 26 07:29:37 2022
 Quant Method : Z:\pestpcbsrv\HPCHEM1\ECD_P\methods\PP021022.M
 Quant Title : GC EXTRACTABLES
 QLast Update : Fri Feb 11 04:48:05 2022
 Response via : Initial Calibration
 Integrator: ChemStation

Volume Inj. : 2 µl
 Signal #1 Phase : ZB-MR1 Signal #2 Phase: ZB-MR2
 Signal #1 Info : 30Mx0.32mmx 0.50µ Signal #2 Info : 30M x 0.32mm x 0.25µm

	Compound	RT#1	RT#2	Resp#1	Resp#2	ng/ml	ng/ml
42)	L9 AR-1268-2	8.604f	7.429	12222343	69710170	69.825	308.503 #
43)	L9 AR-1268-3	8.867	7.653	63599	1223878	0.412	6.285 #
44)	L9 AR-1268-4	9.287f	7.972	17907026	27457026	286.191	305.328
45)	L9 AR-1268-5	9.744f	8.277	102476	8035228	0.226	13.372 #

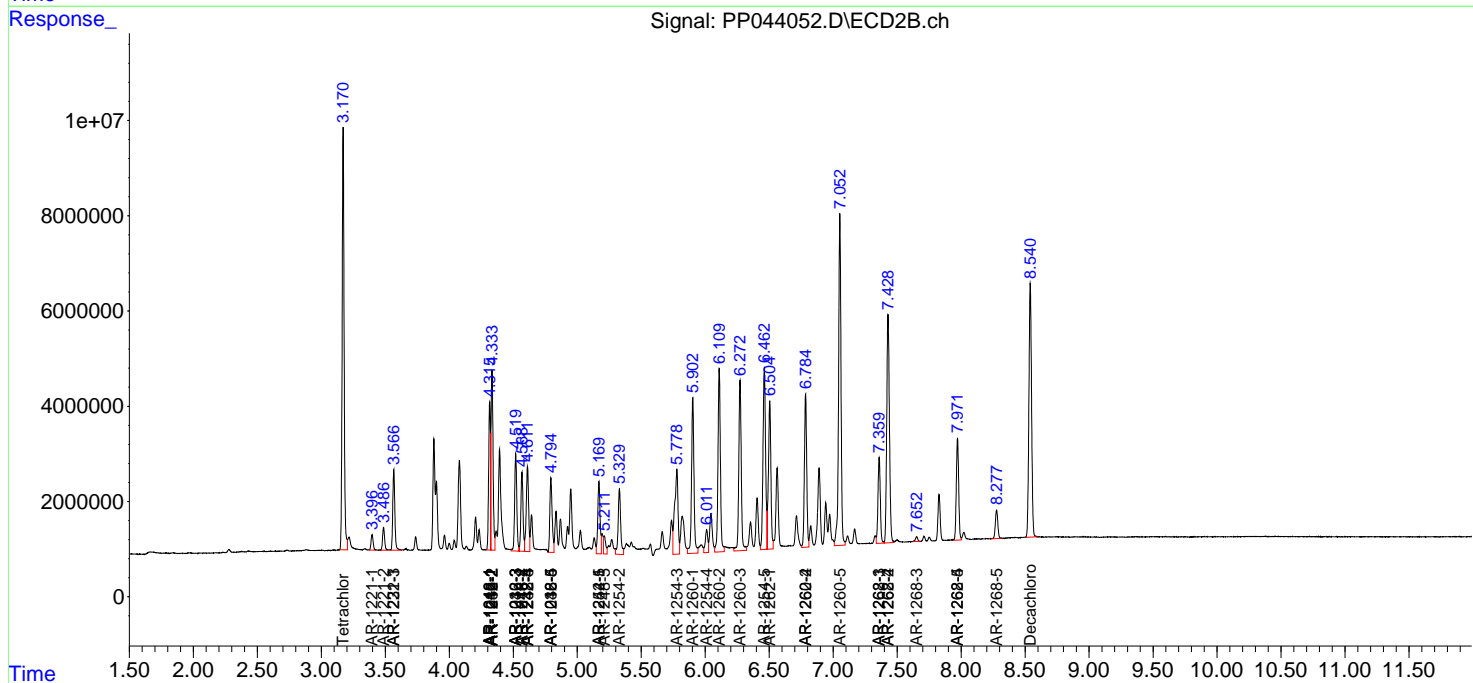
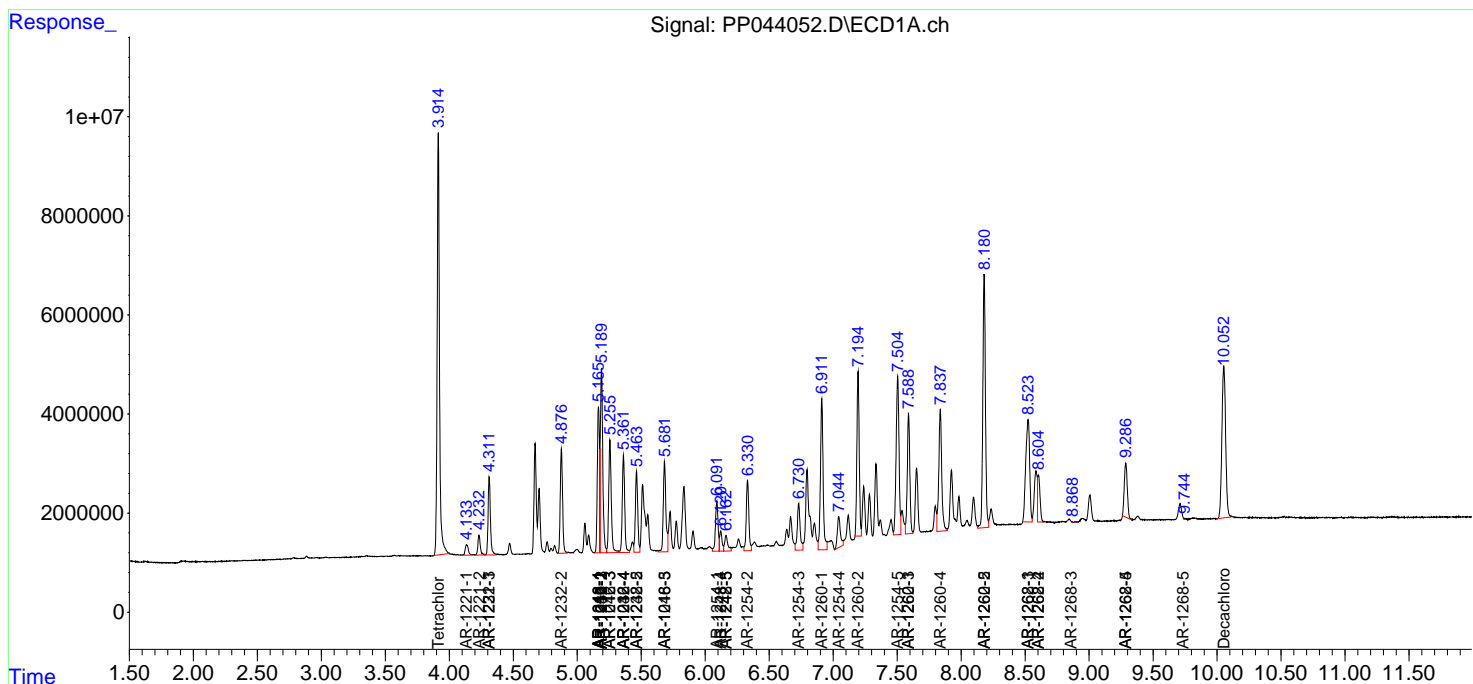
(f)=RT Delta > 1/2 Window (#)=Amounts differ by > 25% (m)=manual int.

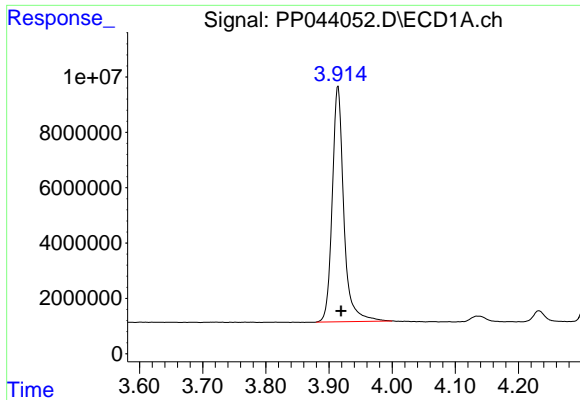
Data Path : Z:\pestpcbsrv\HPCHEM1\ECD_P\Data\PP022522\
 Data File : PP044052.D
 Signal(s) : Signal #1: ECD1A.ch Signal #2: ECD2B.ch
 Acq On : 26 Feb 2022 02:25
 Operator : YP\AJ
 Sample : AR1660CCC500
 Misc :
 ALS Vial : 3 Sample Multiplier: 1

Instrument :
 ECD_P
 ClientSampleId :

Integration File signal 1: autoint1.e
 Integration File signal 2: autoint2.e
 Quant Time: Feb 26 07:29:37 2022
 Quant Method : Z:\pestpcbsrv\HPCHEM1\ECD_P\methods\PP021022.M
 Quant Title : GC EXTRACTABLES
 QLast Update : Fri Feb 11 04:48:05 2022
 Response via : Initial Calibration
 Integrator: ChemStation

Volume Inj. : 2 µl
 Signal #1 Phase : ZB-MR1 Signal #2 Phase: ZB-MR2
 Signal #1 Info : 30Mx0.32mmx 0.50µ Signal #2 Info : 30M x 0.32mm x 0.25µm

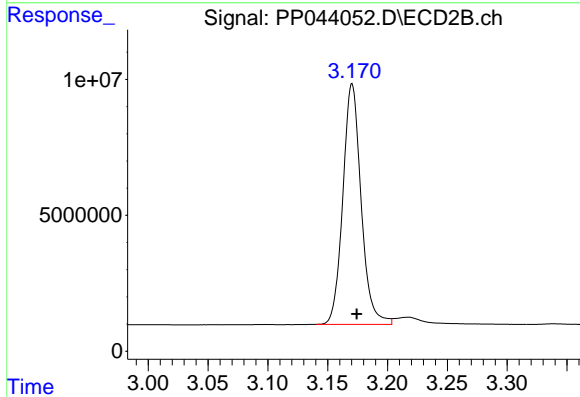




#1 Tetrachloro-m-xylene

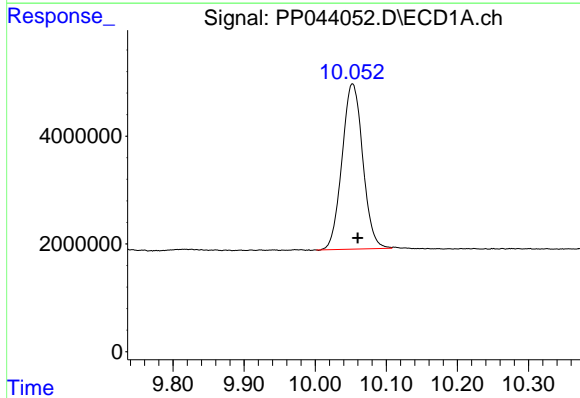
R.T.: 3.914 min
 Delta R.T.: -0.005 min
 Response: 108465722
 Conc: 49.06 ng/ml

Instrument :
 ECD_P
 ClientSampleId :



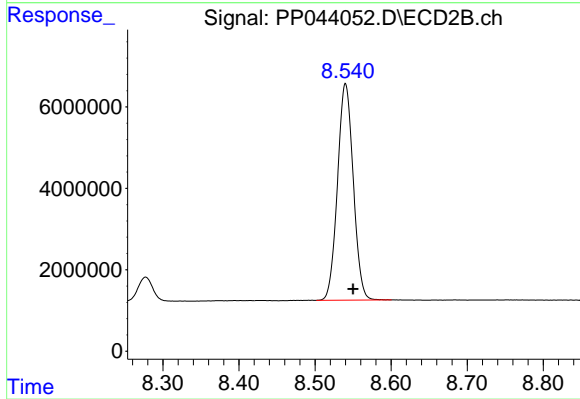
#1 Tetrachloro-m-xylene

R.T.: 3.170 min
 Delta R.T.: -0.004 min
 Response: 94209229
 Conc: 50.16 ng/ml



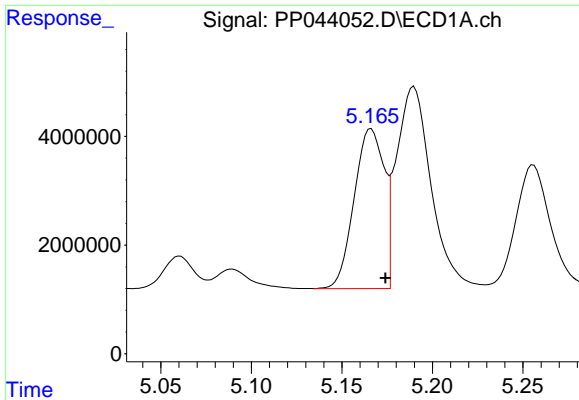
#2 Decachlorobiphenyl

R.T.: 10.053 min
 Delta R.T.: -0.007 min
 Response: 62201972
 Conc: 52.36 ng/ml



#2 Decachlorobiphenyl

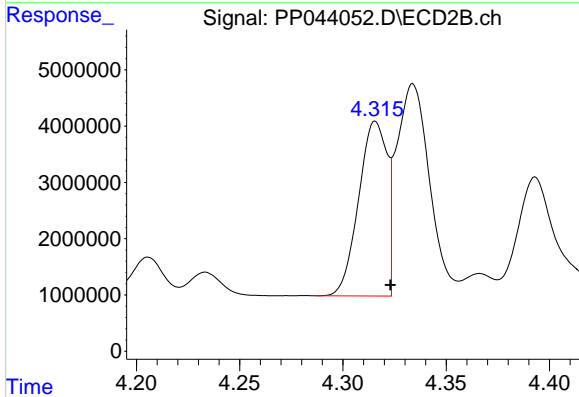
R.T.: 8.540 min
 Delta R.T.: -0.010 min
 Response: 76528041
 Conc: 47.17 ng/ml



#3 AR-1016-1

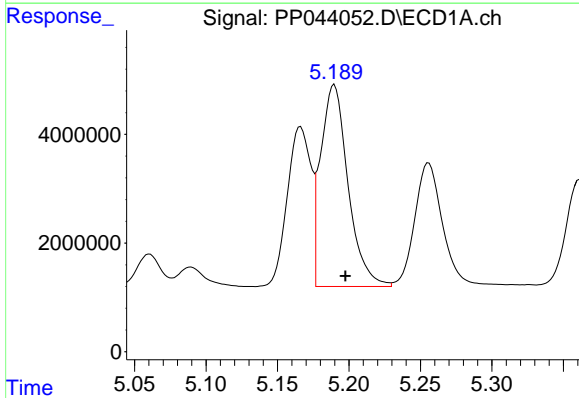
R.T.: 5.166 min
 Delta R.T.: -0.008 min
 Response: 33809670
 Conc: 465.94 ng/ml

Instrument :
 ECD_P
 ClientSampleId :



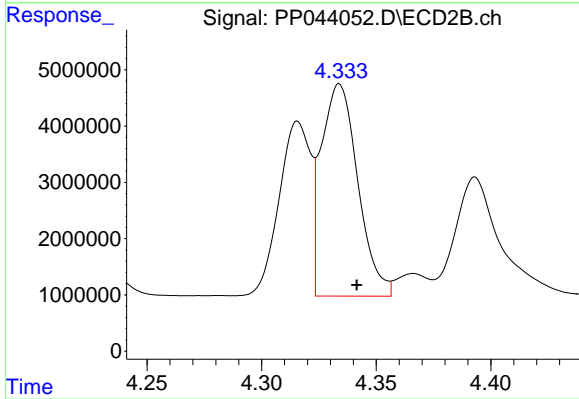
#3 AR-1016-1

R.T.: 4.316 min
 Delta R.T.: -0.007 min
 Response: 29644472
 Conc: 483.84 ng/ml



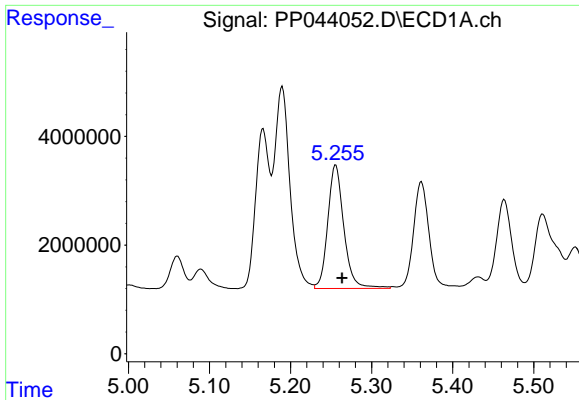
#4 AR-1016-2

R.T.: 5.190 min
 Delta R.T.: -0.008 min
 Response: 49600847
 Conc: 470.28 ng/ml



#4 AR-1016-2

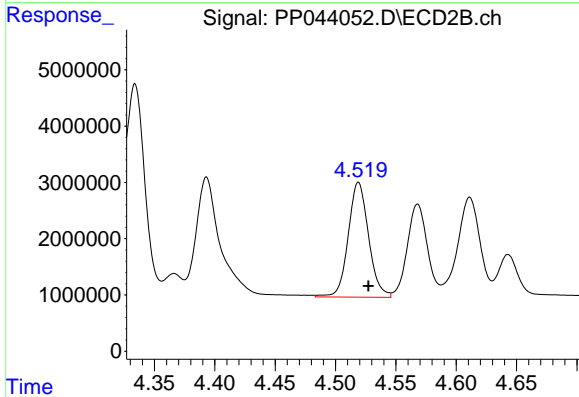
R.T.: 4.334 min
 Delta R.T.: -0.008 min
 Response: 41895810
 Conc: 495.87 ng/ml



#5 AR-1016-3

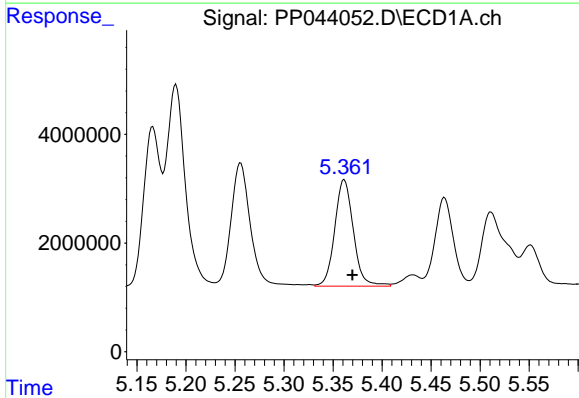
R.T.: 5.256 min
 Delta R.T.: -0.008 min
 Response: 31274553
 Conc: 474.97 ng/ml

Instrument :
 ECD_P
 ClientSampleId :



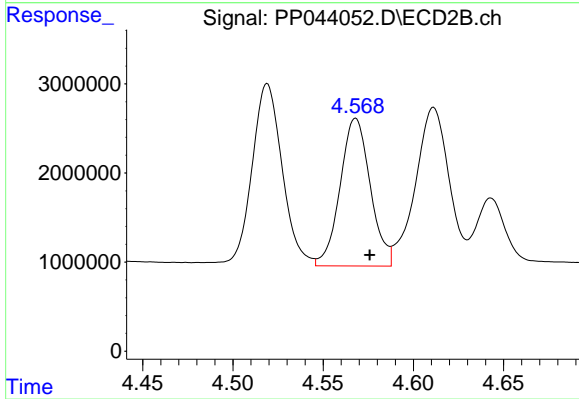
#5 AR-1016-3

R.T.: 4.519 min
 Delta R.T.: -0.008 min
 Response: 23994818
 Conc: 513.62 ng/ml



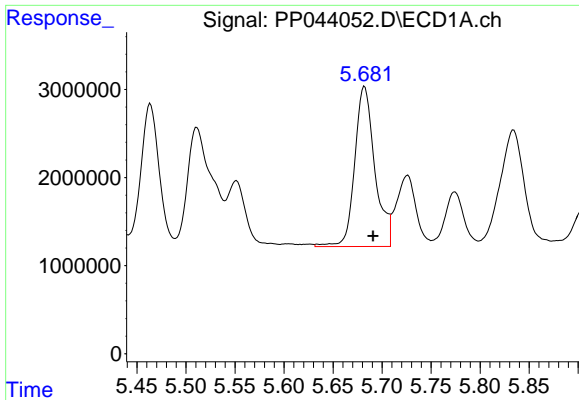
#6 AR-1016-4

R.T.: 5.361 min
 Delta R.T.: -0.008 min
 Response: 25943052
 Conc: 478.39 ng/ml



#6 AR-1016-4

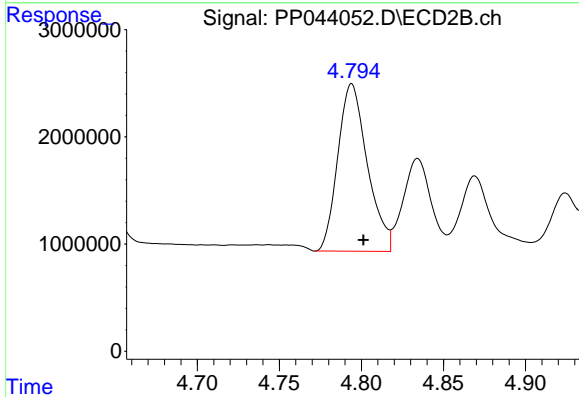
R.T.: 4.568 min
 Delta R.T.: -0.008 min
 Response: 19327255
 Conc: 517.17 ng/ml



#7 AR-1016-5

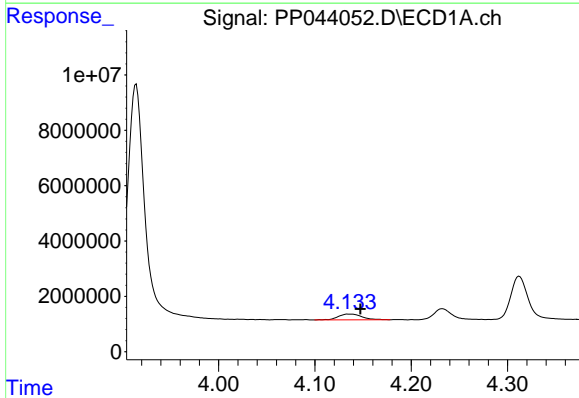
R.T.: 5.682 min
 Delta R.T.: -0.009 min
 Response: 25968411
 Conc: 494.37 ng/ml

Instrument :
 ECD_P
 ClientSampleId :



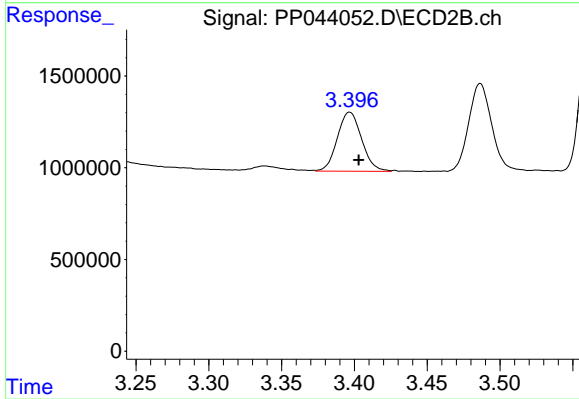
#7 AR-1016-5

R.T.: 4.794 min
 Delta R.T.: -0.007 min
 Response: 19532248
 Conc: 427.56 ng/ml



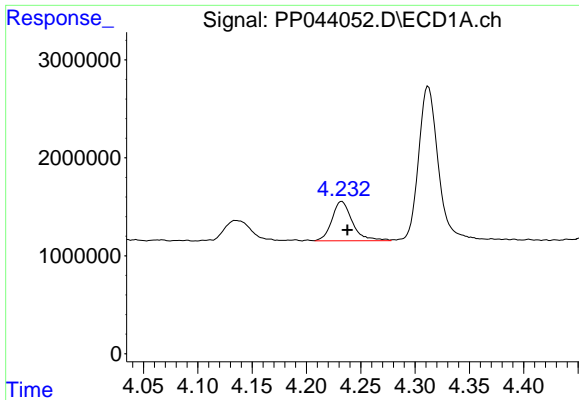
#8 AR-1221-1

R.T.: 4.135 min
 Delta R.T.: -0.012 min
 Response: 3583290
 Conc: 140.75 ng/ml



#8 AR-1221-1

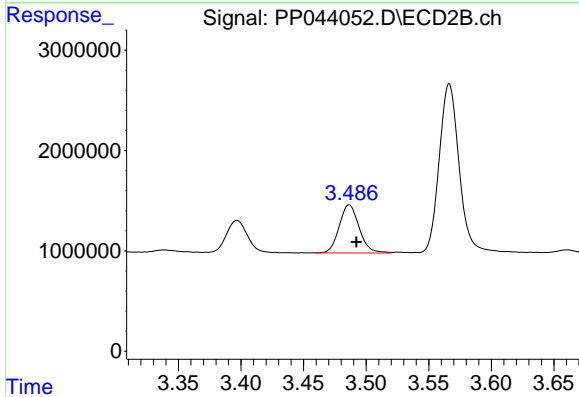
R.T.: 3.397 min
 Delta R.T.: -0.006 min
 Response: 3748773
 Conc: 157.16 ng/ml



#9 AR-1221-2

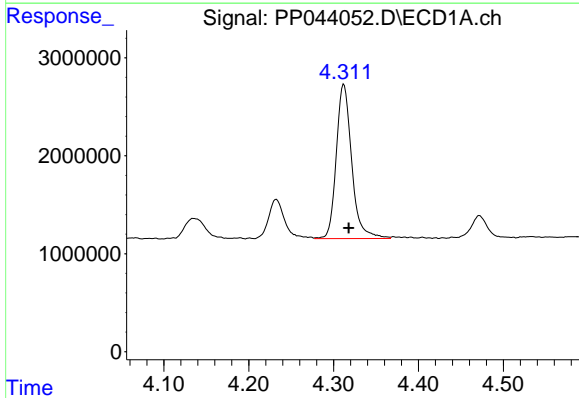
R.T.: 4.232 min
 Delta R.T.: -0.005 min
 Response: 5260636
 Conc: 274.02 ng/ml

Instrument :
 ECD_P
 ClientSampleId :



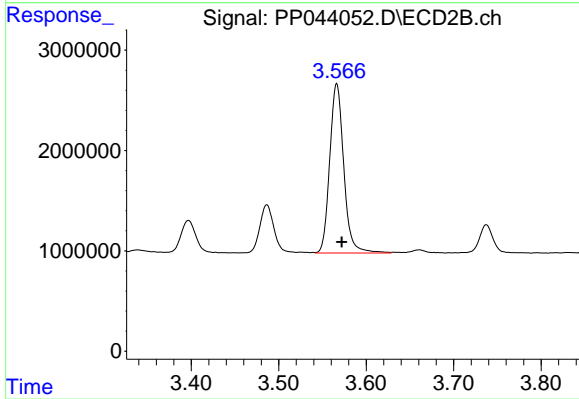
#9 AR-1221-2

R.T.: 3.487 min
 Delta R.T.: -0.006 min
 Response: 5319922
 Conc: 294.57 ng/ml



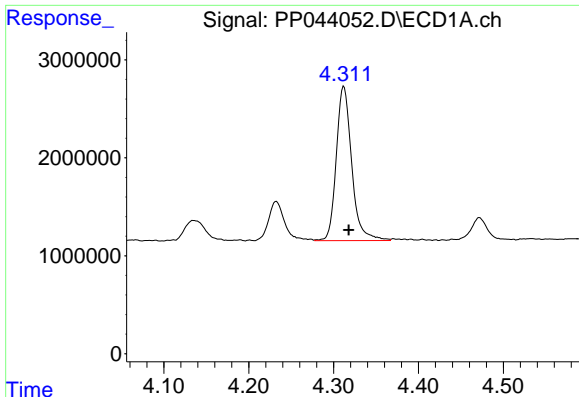
#10 AR-1221-3

R.T.: 4.312 min
 Delta R.T.: -0.006 min
 Response: 19897463
 Conc: 346.37 ng/ml



#10 AR-1221-3

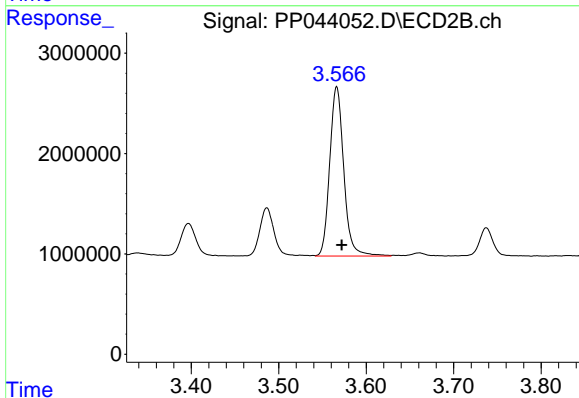
R.T.: 3.566 min
 Delta R.T.: -0.006 min
 Response: 18852030
 Conc: 365.44 ng/ml



#11 AR-1232-1

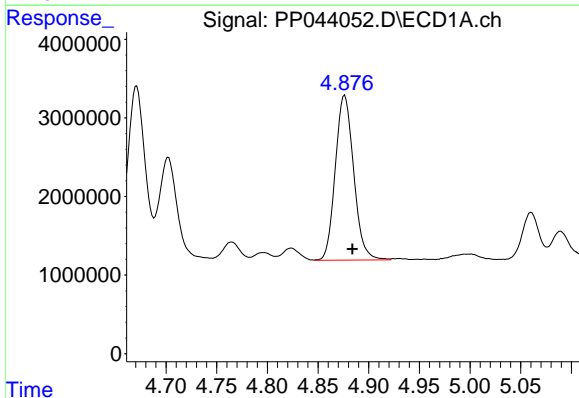
R.T.: 4.312 min
 Delta R.T.: -0.006 min
 Response: 19897463
 Conc: 409.99 ng/ml

Instrument :
 ECD_P
 ClientSampleId :



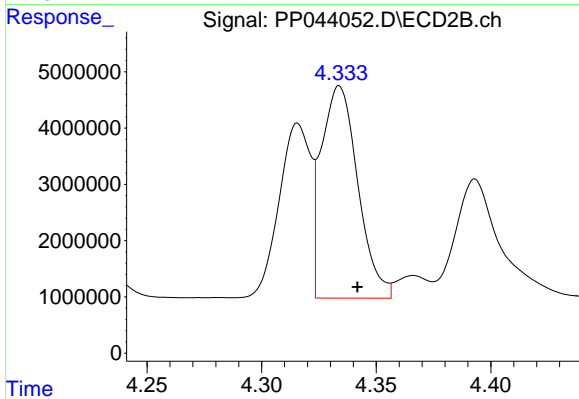
#11 AR-1232-1

R.T.: 3.566 min
 Delta R.T.: -0.006 min
 Response: 18852030
 Conc: 438.16 ng/ml



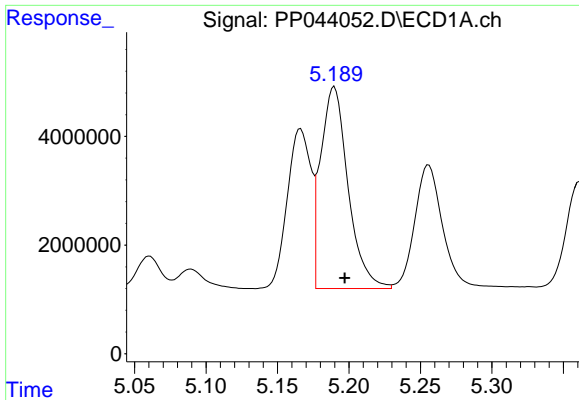
#12 AR-1232-2

R.T.: 4.876 min
 Delta R.T.: -0.007 min
 Response: 26436234
 Conc: 1115.59 ng/ml



#12 AR-1232-2

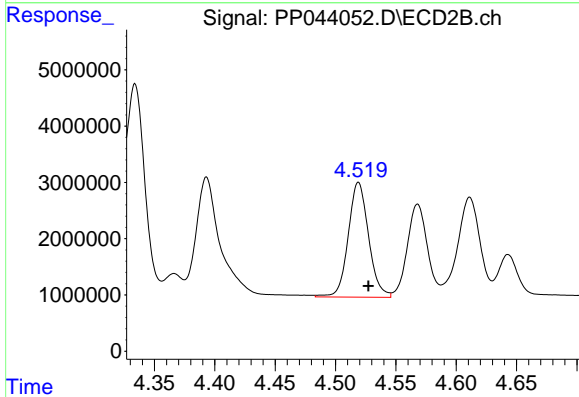
R.T.: 4.334 min
 Delta R.T.: -0.008 min
 Response: 41895810
 Conc: 1173.62 ng/ml



#13 AR-1232-3

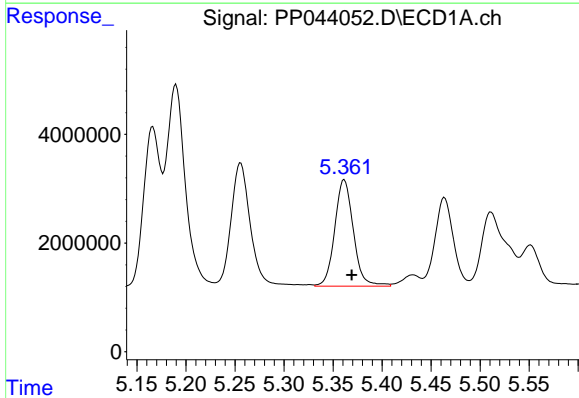
R.T.: 5.190 min
 Delta R.T.: -0.007 min
 Response: 49600847
 Conc: 1152.07 ng/m

Instrument :
 ECD_P
 ClientSampleId :



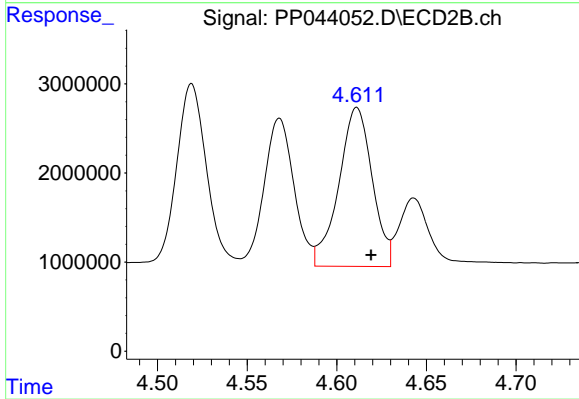
#13 AR-1232-3

R.T.: 4.519 min
 Delta R.T.: -0.008 min
 Response: 23994818
 Conc: 1227.10 ng/ml



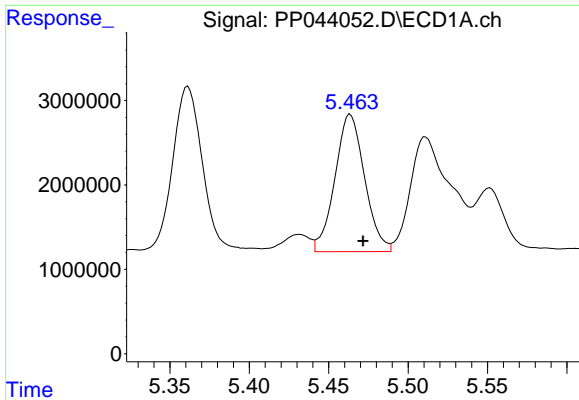
#14 AR-1232-4

R.T.: 5.361 min
 Delta R.T.: -0.008 min
 Response: 25943052
 Conc: 1188.51 ng/ml



#14 AR-1232-4

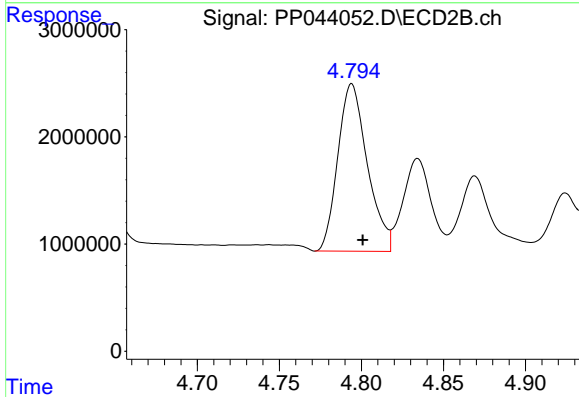
R.T.: 4.611 min
 Delta R.T.: -0.008 min
 Response: 23171970
 Conc: 1340.01 ng/ml



#15 AR-1232-5

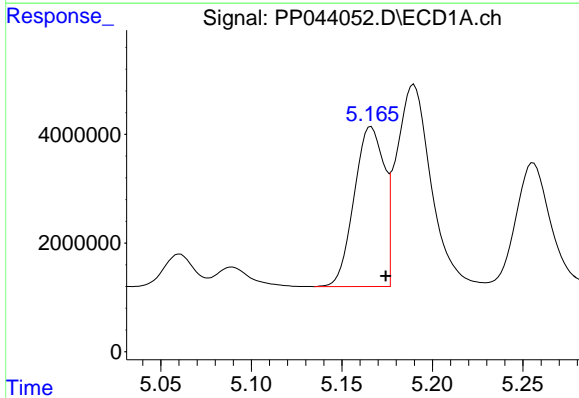
R.T.: 5.464 min
 Delta R.T.: -0.008 min
 Response: 21162789
 Conc: 1312.08 ng/ml

Instrument :
 ECD_P
 ClientSampleId :



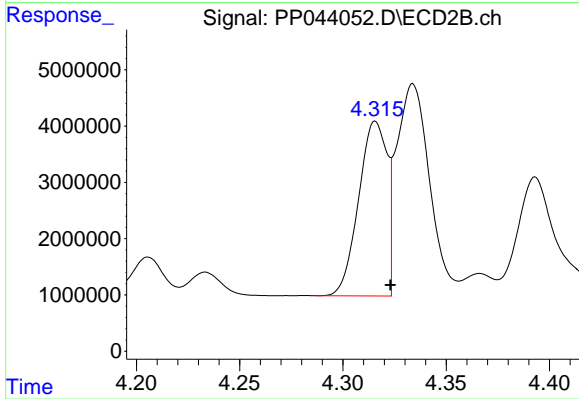
#15 AR-1232-5

R.T.: 4.794 min
 Delta R.T.: -0.007 min
 Response: 19532248
 Conc: 1039.82 ng/ml



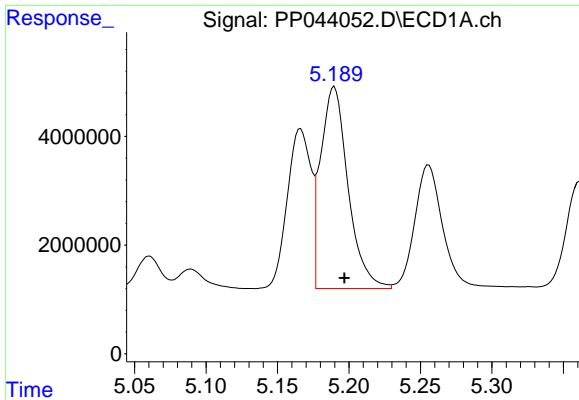
#16 AR-1242-1

R.T.: 5.166 min
 Delta R.T.: -0.008 min
 Response: 33809670
 Conc: 601.68 ng/ml



#16 AR-1242-1

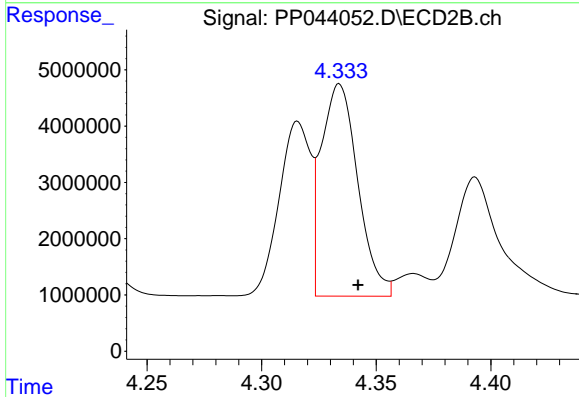
R.T.: 4.316 min
 Delta R.T.: -0.007 min
 Response: 29644472
 Conc: 608.12 ng/ml



#17 AR-1242-2

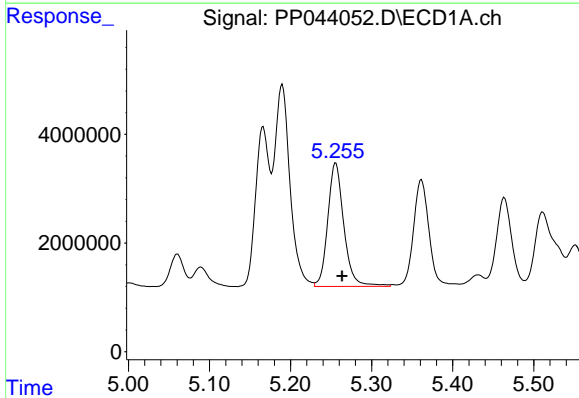
R.T.: 5.190 min
 Delta R.T.: -0.007 min
 Response: 49600847
 Conc: 599.52 ng/ml

Instrument :
 ECD_P
 ClientSampleId :



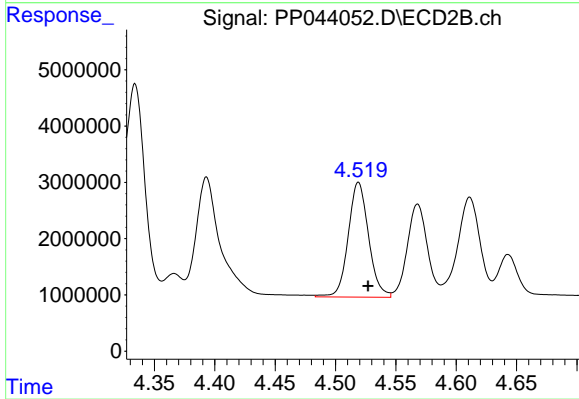
#17 AR-1242-2

R.T.: 4.334 min
 Delta R.T.: -0.008 min
 Response: 41895810
 Conc: 622.20 ng/ml



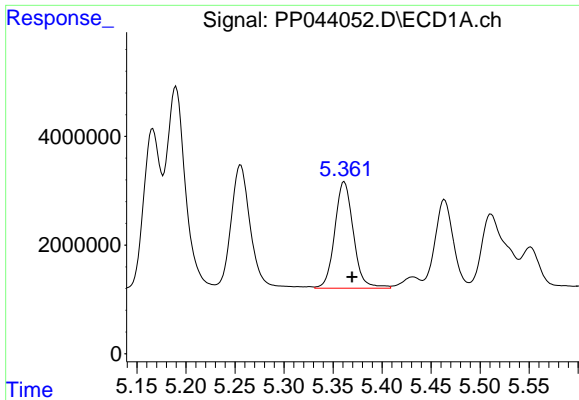
#18 AR-1242-3

R.T.: 5.256 min
 Delta R.T.: -0.008 min
 Response: 31274553
 Conc: 604.22 ng/ml



#18 AR-1242-3

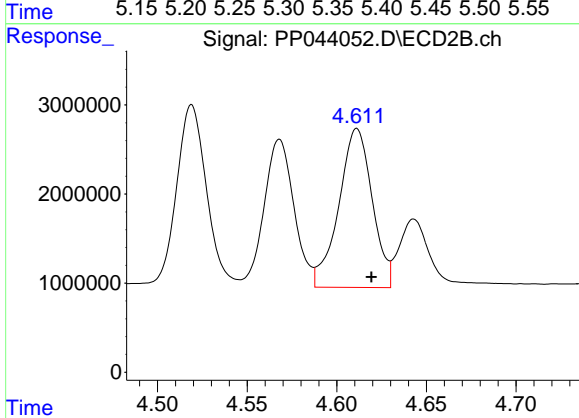
R.T.: 4.519 min
 Delta R.T.: -0.008 min
 Response: 23994818
 Conc: 639.21 ng/ml



#19 AR-1242-4

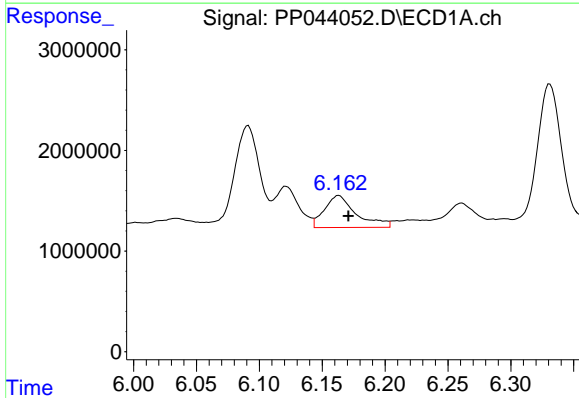
R.T.: 5.361 min
Delta R.T.: -0.008 min
Response: 25943052
Conc: 607.39 ng/ml

Instrument :
ECD_P
ClientSampleId :



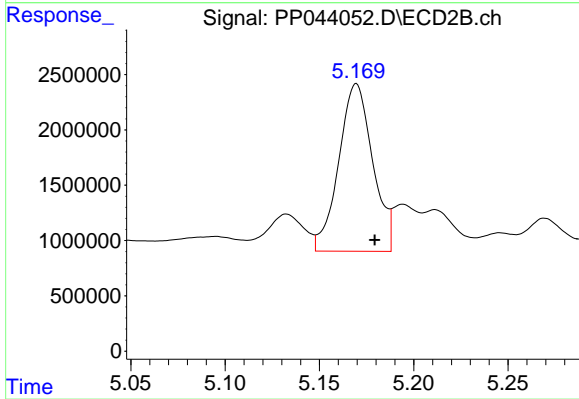
#19 AR-1242-4

R.T.: 4.611 min
Delta R.T.: -0.008 min
Response: 23171970
Conc: 641.71 ng/ml



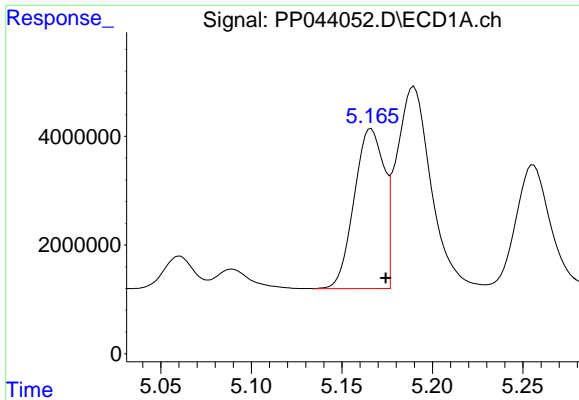
#20 AR-1242-5

R.T.: 6.163 min
Delta R.T.: -0.008 min
Response: 5581829
Conc: 129.26 ng/ml



#20 AR-1242-5

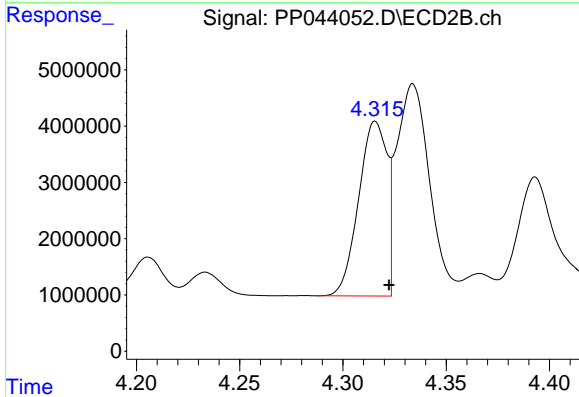
R.T.: 5.170 min
Delta R.T.: -0.010 min
Response: 18971162
Conc: 440.70 ng/ml



#21 AR-1248-1

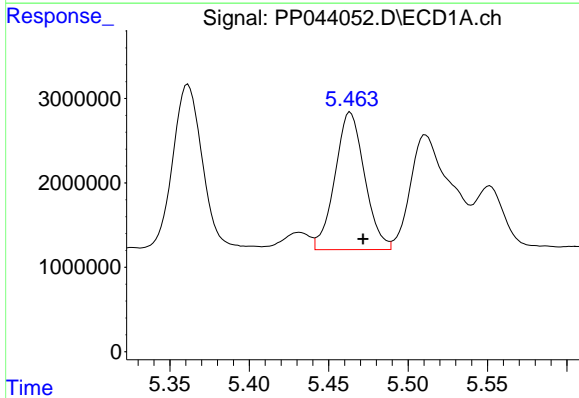
R.T.: 5.166 min
 Delta R.T.: -0.008 min
 Response: 33809670
 Conc: 824.67 ng/ml

Instrument :
 ECD_P
 ClientSampleId :



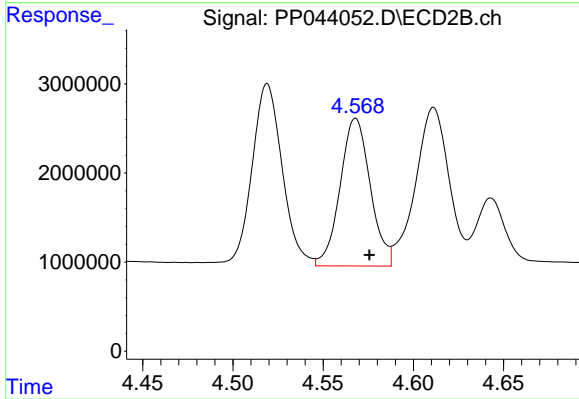
#21 AR-1248-1

R.T.: 4.316 min
 Delta R.T.: -0.007 min
 Response: 29644472
 Conc: 795.82 ng/ml



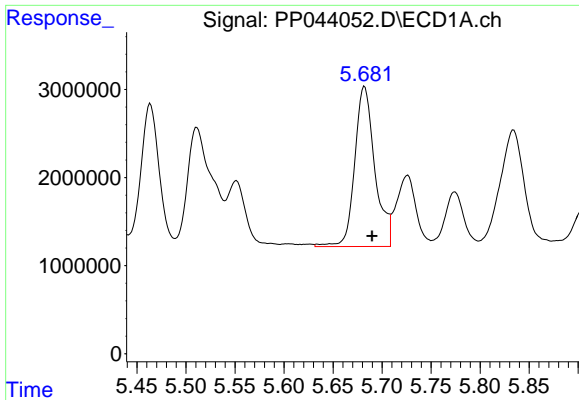
#22 AR-1248-2

R.T.: 5.464 min
 Delta R.T.: -0.008 min
 Response: 21162789
 Conc: 372.50 ng/ml



#22 AR-1248-2

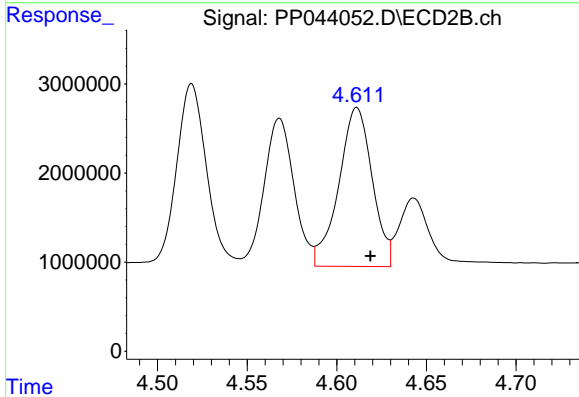
R.T.: 4.568 min
 Delta R.T.: -0.008 min
 Response: 19327255
 Conc: 395.07 ng/ml



#23 AR-1248-3

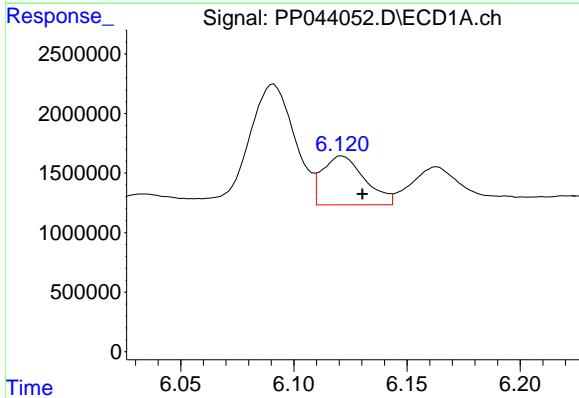
R.T.: 5.682 min
 Delta R.T.: -0.008 min
 Response: 25968411
 Conc: 389.24 ng/ml

Instrument :
 ECD_P
 ClientSampleId :



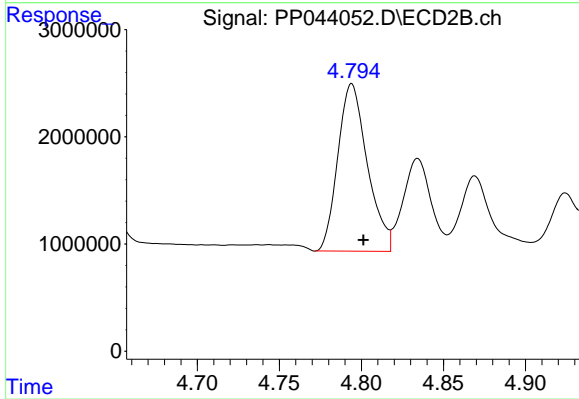
#23 AR-1248-3

R.T.: 4.611 min
 Delta R.T.: -0.008 min
 Response: 23171970
 Conc: 451.56 ng/ml



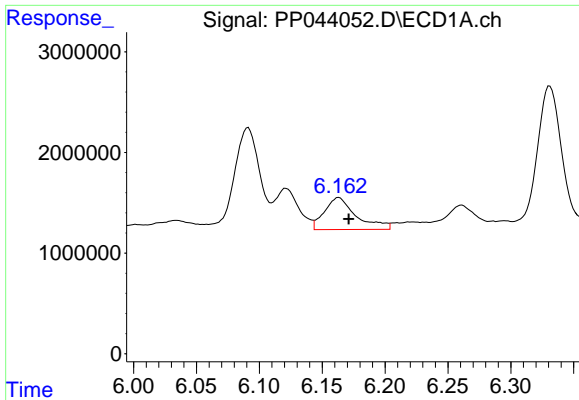
#24 AR-1248-4

R.T.: 6.121 min
 Delta R.T.: -0.009 min
 Response: 5359611
 Conc: 76.71 ng/ml



#24 AR-1248-4

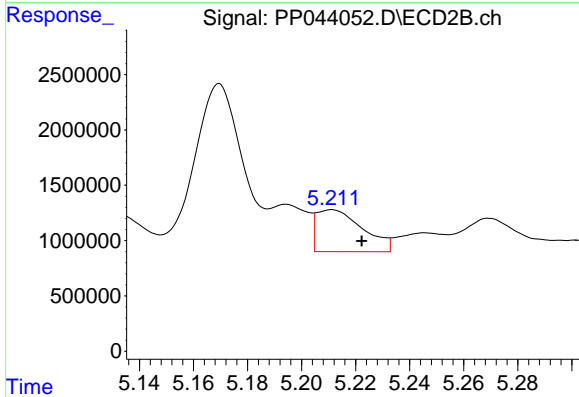
R.T.: 4.794 min
 Delta R.T.: -0.007 min
 Response: 19532248
 Conc: 333.17 ng/ml



#25 AR-1248-5

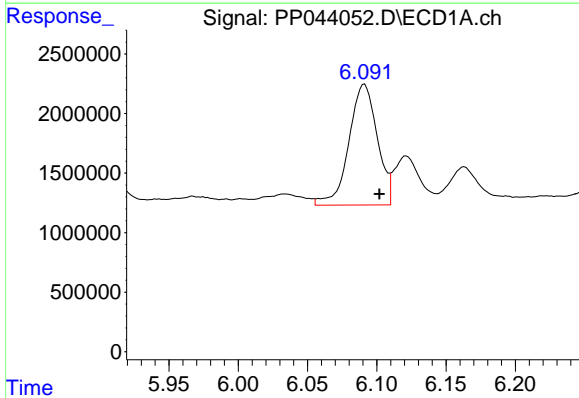
R.T.: 6.163 min
 Delta R.T.: -0.008 min
 Response: 5581829
 Conc: 80.74 ng/ml

Instrument :
 ECD_P
 ClientSampleId :



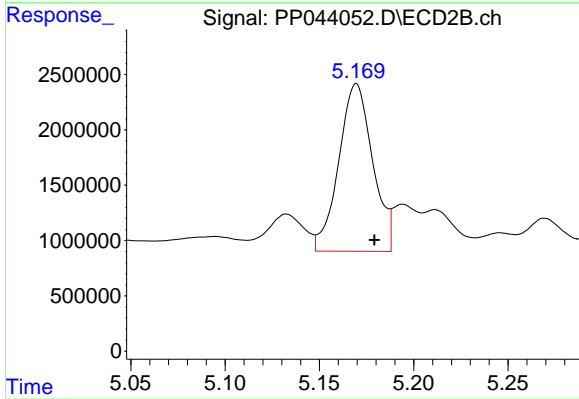
#25 AR-1248-5

R.T.: 5.211 min
 Delta R.T.: -0.011 min
 Response: 4500649
 Conc: 78.55 ng/ml



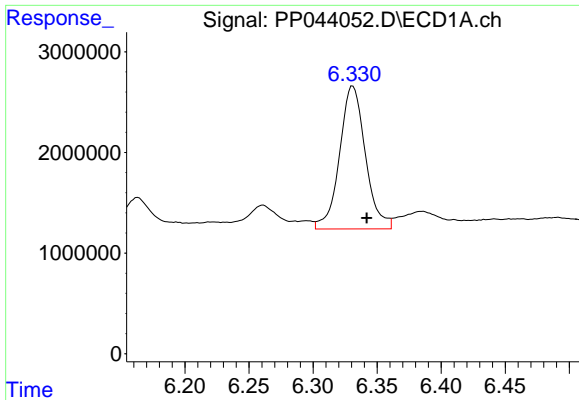
#26 AR-1254-1

R.T.: 6.091 min
 Delta R.T.: -0.011 min
 Response: 14457587
 Conc: 191.35 ng/ml



#26 AR-1254-1

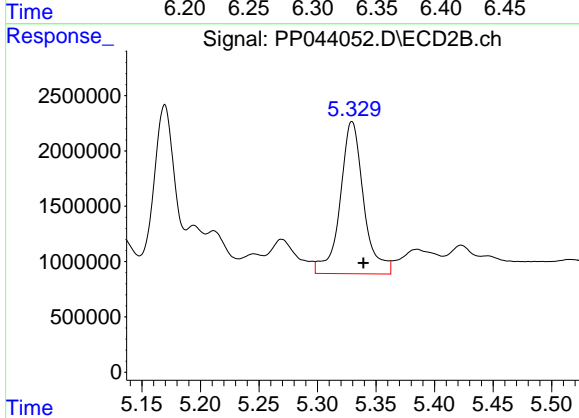
R.T.: 5.170 min
 Delta R.T.: -0.010 min
 Response: 18971162
 Conc: 217.23 ng/ml



#27 AR-1254-2

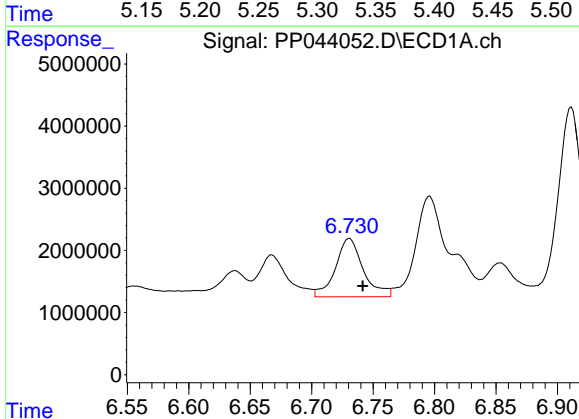
R.T.: 6.331 min
 Delta R.T.: -0.011 min
 Response: 19911325
 Conc: 177.51 ng/ml

Instrument :
 ECD_P
 ClientSampleId :



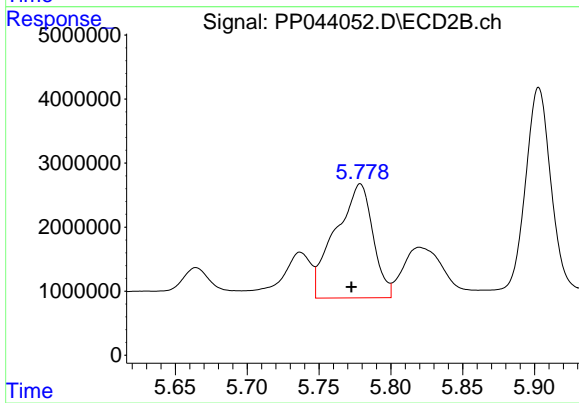
#27 AR-1254-2

R.T.: 5.330 min
 Delta R.T.: -0.010 min
 Response: 19174729
 Conc: 251.38 ng/ml



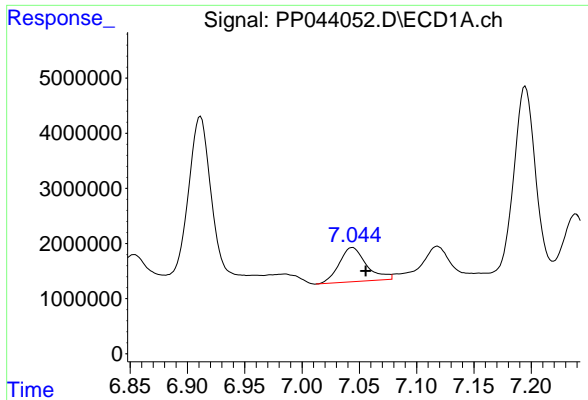
#28 AR-1254-3

R.T.: 6.731 min
 Delta R.T.: -0.011 min
 Response: 14766677
 Conc: 127.62 ng/ml



#28 AR-1254-3

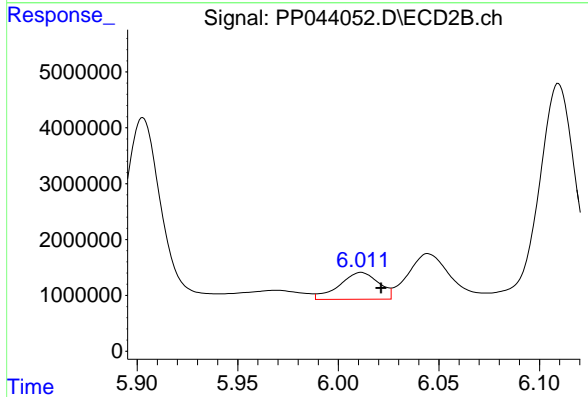
R.T.: 5.779 min
 Delta R.T.: 0.006 min
 Response: 32263401
 Conc: 263.25 ng/ml



#29 AR-1254-4

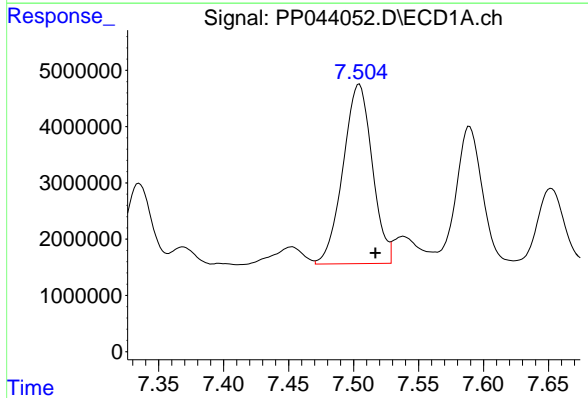
R.T.: 7.044 min
 Delta R.T.: -0.012 min
 Response: 10275915
 Conc: 128.72 ng/ml

Instrument :
 ECD_P
 ClientSampleId :



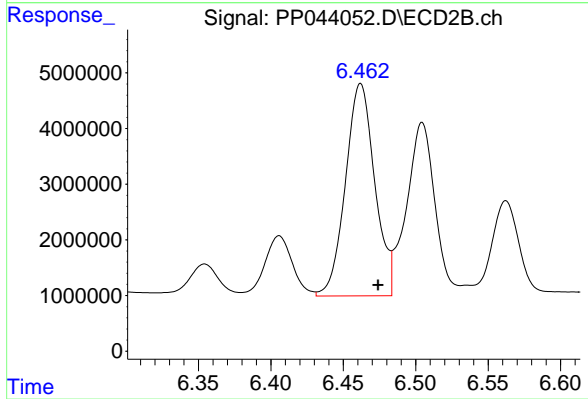
#29 AR-1254-4

R.T.: 6.011 min
 Delta R.T.: -0.010 min
 Response: 6568896
 Conc: 83.23 ng/ml



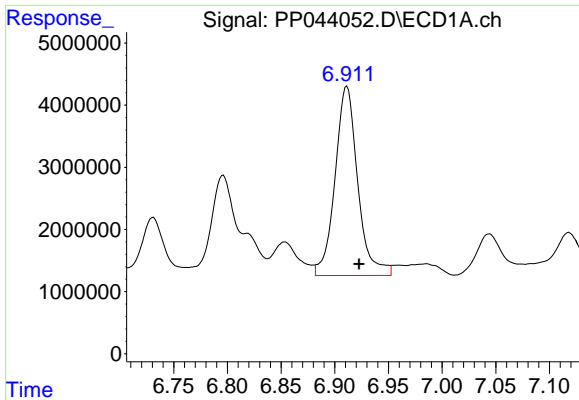
#30 AR-1254-5

R.T.: 7.504 min
 Delta R.T.: -0.012 min
 Response: 49855573
 Conc: 581.32 ng/ml



#30 AR-1254-5

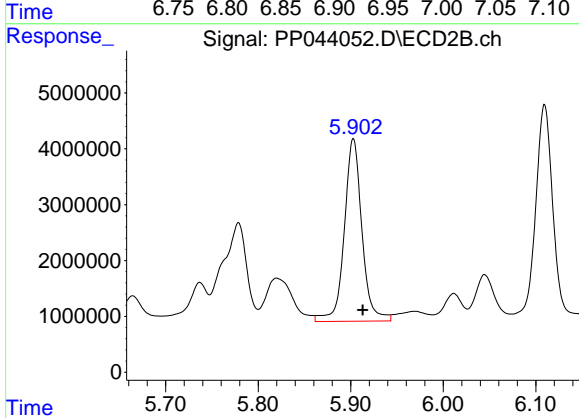
R.T.: 6.462 min
 Delta R.T.: -0.012 min
 Response: 53712097
 Conc: 464.46 ng/ml



#31 AR-1260-1

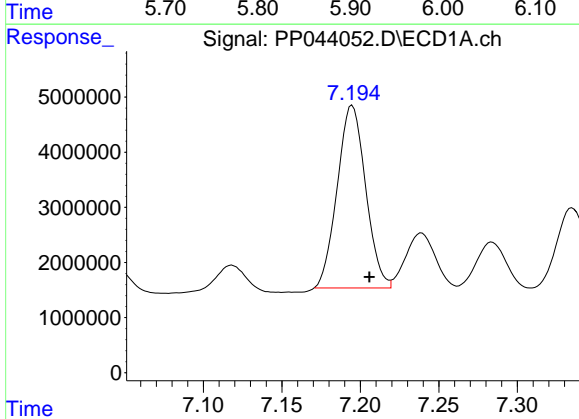
R.T.: 6.911 min
 Delta R.T.: -0.011 min
 Response: 44786122
 Conc: 534.81 ng/ml

Instrument :
 ECD_P
 ClientSampleId :



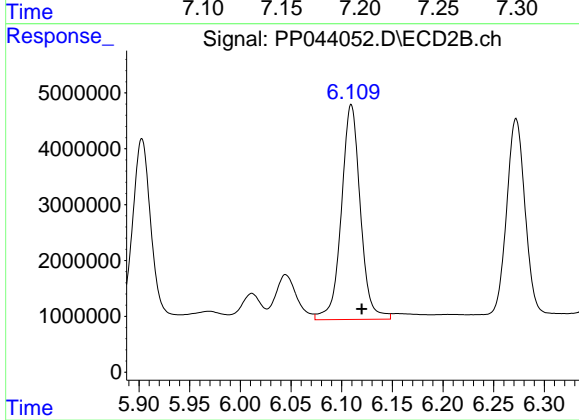
#31 AR-1260-1

R.T.: 5.903 min
 Delta R.T.: -0.010 min
 Response: 43297549
 Conc: 541.42 ng/ml



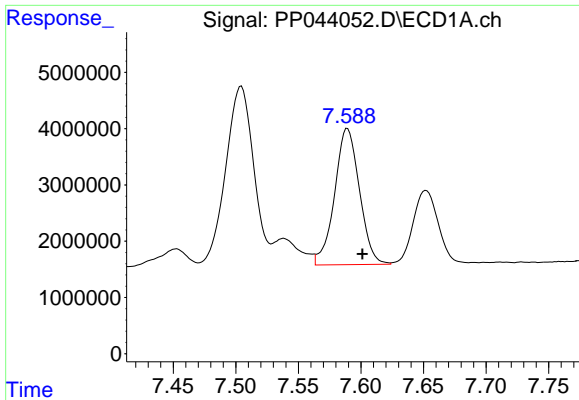
#32 AR-1260-2

R.T.: 7.195 min
 Delta R.T.: -0.011 min
 Response: 41824023
 Conc: 462.04 ng/ml



#32 AR-1260-2

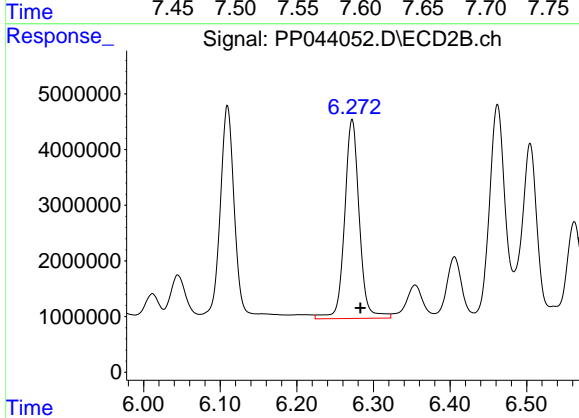
R.T.: 6.109 min
 Delta R.T.: -0.010 min
 Response: 50274551
 Conc: 514.83 ng/ml



#33 AR-1260-3

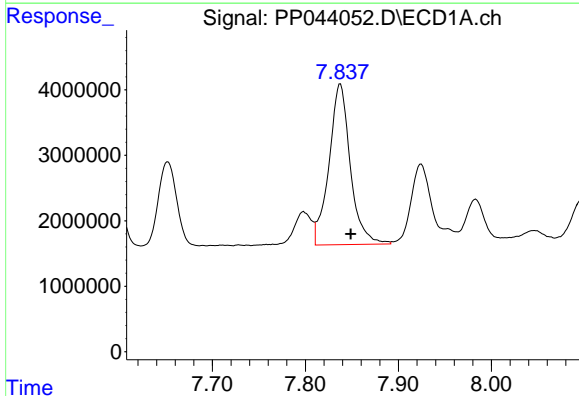
R.T.: 7.589 min
 Delta R.T.: -0.012 min
 Response: 33575557
 Conc: 463.18 ng/ml

Instrument :
 ECD_P
 ClientSampleId :



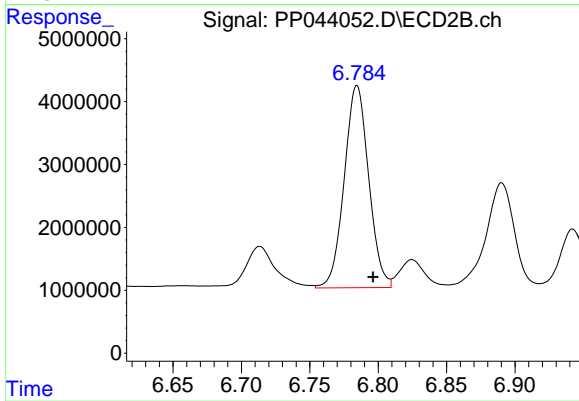
#33 AR-1260-3

R.T.: 6.272 min
 Delta R.T.: -0.011 min
 Response: 47904809
 Conc: 524.75 ng/ml



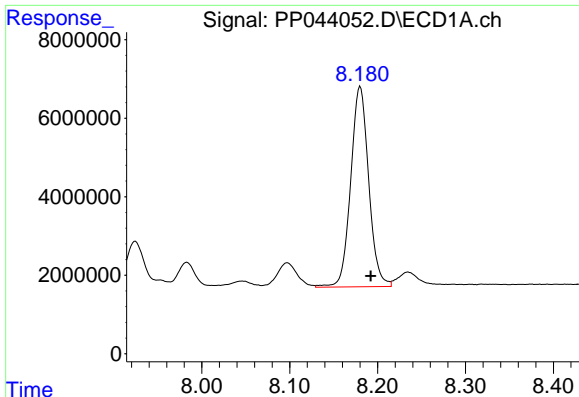
#34 AR-1260-4

R.T.: 7.838 min
 Delta R.T.: -0.011 min
 Response: 39189624
 Conc: 456.46 ng/ml



#34 AR-1260-4

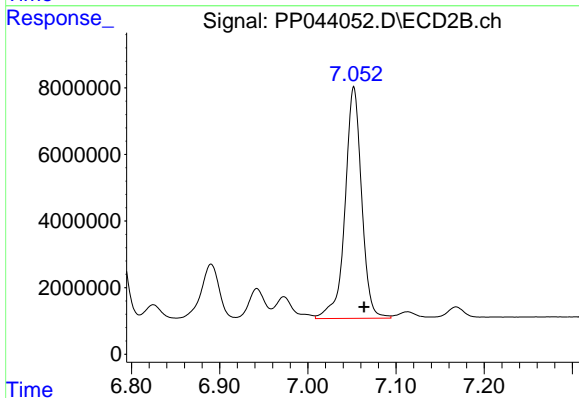
R.T.: 6.784 min
 Delta R.T.: -0.012 min
 Response: 40032525
 Conc: 494.78 ng/ml



#35 AR-1260-5

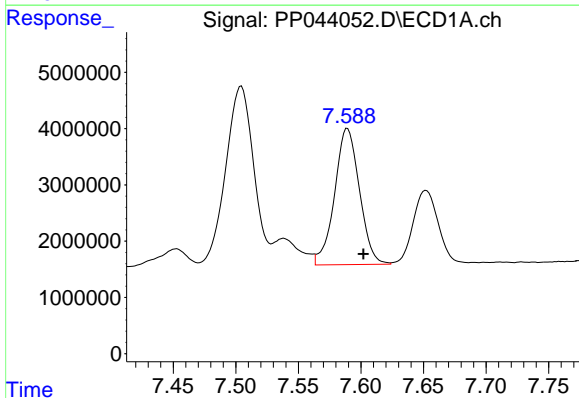
R.T.: 8.180 min
 Delta R.T.: -0.012 min
 Response: 72467868
 Conc: 467.51 ng/ml

Instrument :
 ECD_P
 ClientSampleId :



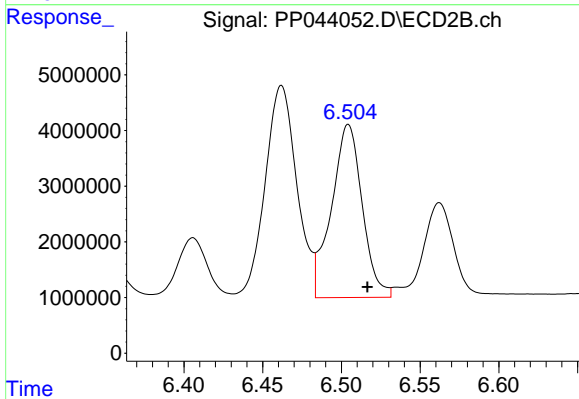
#35 AR-1260-5

R.T.: 7.052 min
 Delta R.T.: -0.012 min
 Response: 90954983
 Conc: 492.01 ng/ml



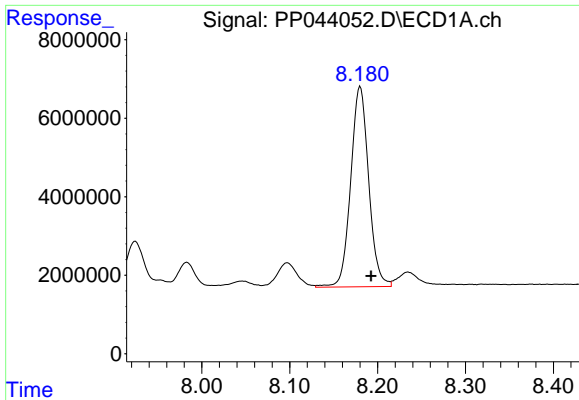
#36 AR-1262-1

R.T.: 7.589 min
 Delta R.T.: -0.013 min
 Response: 33575557
 Conc: 340.04 ng/ml



#36 AR-1262-1

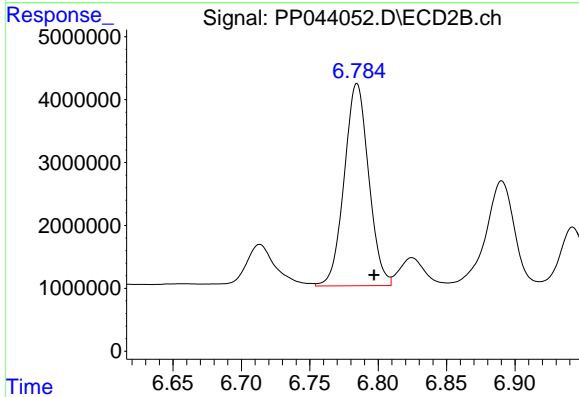
R.T.: 6.504 min
 Delta R.T.: -0.012 min
 Response: 42423673
 Conc: 385.91 ng/ml



#37 AR-1262-2

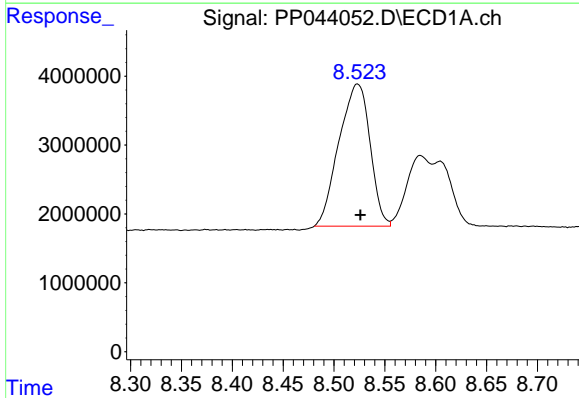
R.T.: 8.180 min
 Delta R.T.: -0.012 min
 Response: 72467868
 Conc: 448.88 ng/ml

Instrument :
 ECD_P
 ClientSampleId :



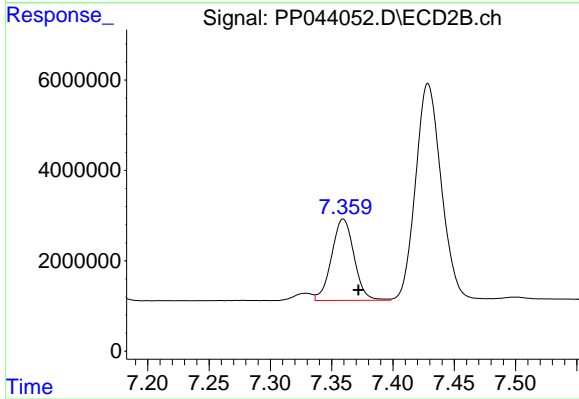
#37 AR-1262-2

R.T.: 6.784 min
 Delta R.T.: -0.013 min
 Response: 40032525
 Conc: 392.46 ng/ml



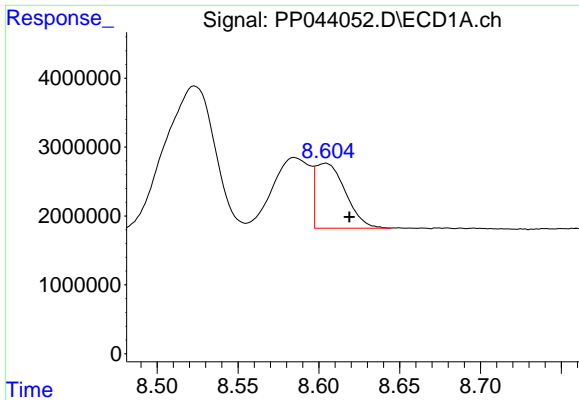
#38 AR-1262-3

R.T.: 8.523 min
 Delta R.T.: -0.003 min
 Response: 43917736
 Conc: 401.45 ng/ml



#38 AR-1262-3

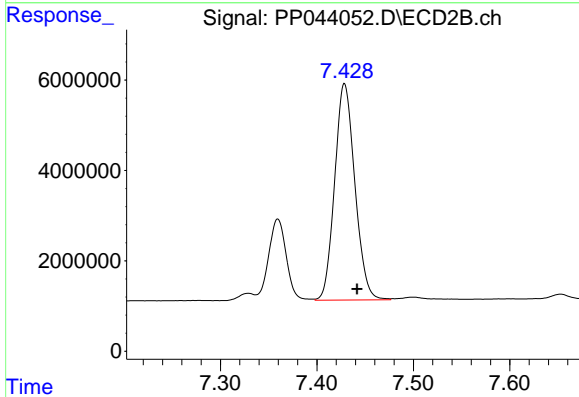
R.T.: 7.359 min
 Delta R.T.: -0.012 min
 Response: 23008452
 Conc: 269.97 ng/ml



#39 AR-1262-4

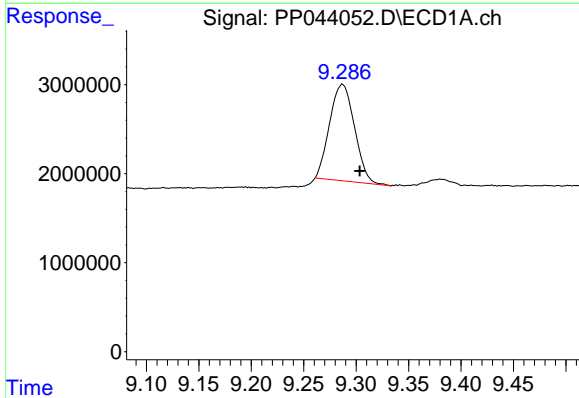
R.T.: 8.604 min
 Delta R.T.: -0.015 min
 Response: 12222343
 Conc: 254.86 ng/ml

Instrument :
 ECD_P
 ClientSampleId :



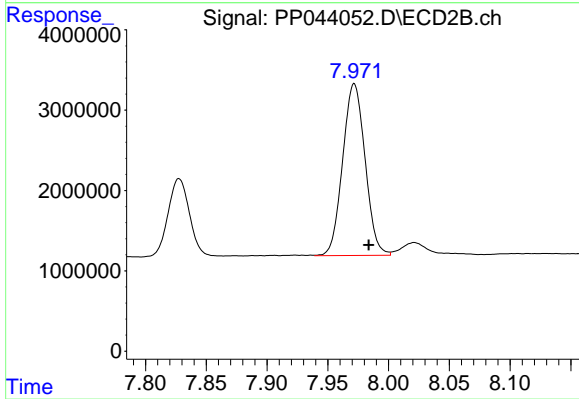
#39 AR-1262-4

R.T.: 7.429 min
 Delta R.T.: -0.013 min
 Response: 69710170
 Conc: 448.83 ng/ml



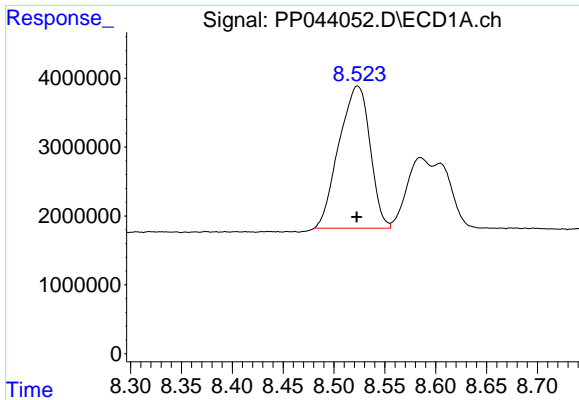
#40 AR-1262-5

R.T.: 9.287 min
 Delta R.T.: -0.016 min
 Response: 17907026
 Conc: 321.56 ng/ml



#40 AR-1262-5

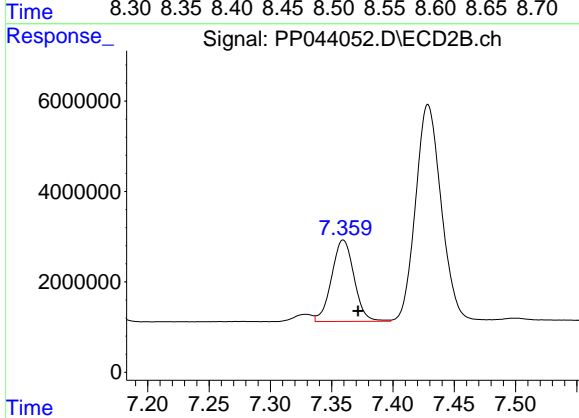
R.T.: 7.972 min
 Delta R.T.: -0.012 min
 Response: 27457026
 Conc: 352.94 ng/ml



#41 AR-1268-1

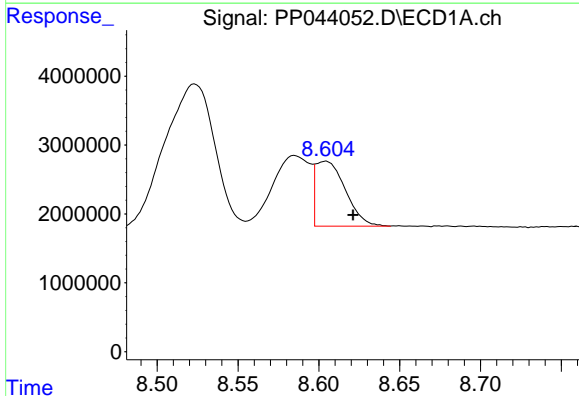
R.T.: 8.523 min
 Delta R.T.: 0.000 min
 Response: 43917736
 Conc: 225.29 ng/ml

Instrument :
 ECD_P
 ClientSampleId :



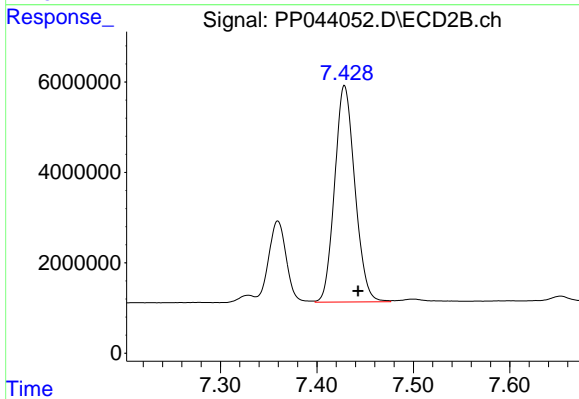
#41 AR-1268-1

R.T.: 7.359 min
 Delta R.T.: -0.012 min
 Response: 23008452
 Conc: 90.81 ng/ml



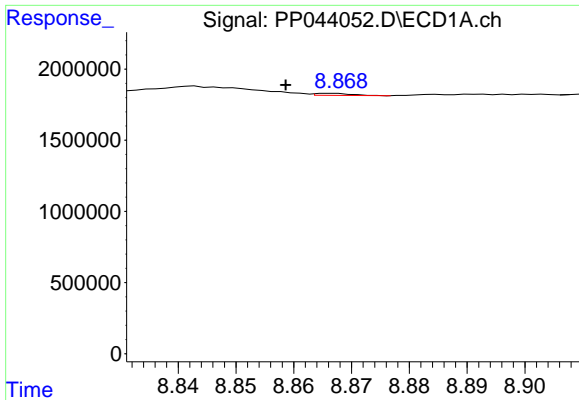
#42 AR-1268-2

R.T.: 8.604 min
 Delta R.T.: -0.017 min
 Response: 12222343
 Conc: 69.83 ng/ml



#42 AR-1268-2

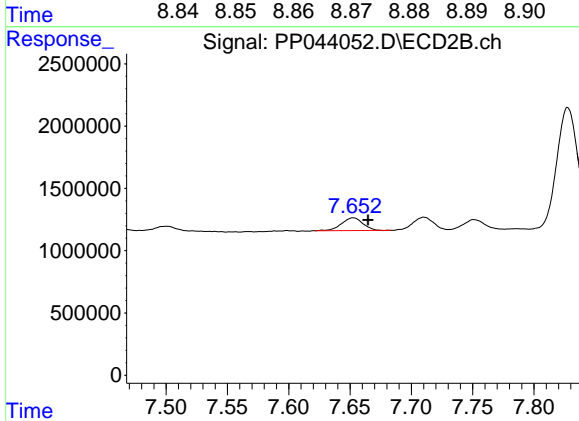
R.T.: 7.429 min
 Delta R.T.: -0.014 min
 Response: 69710170
 Conc: 308.50 ng/ml



#43 AR-1268-3

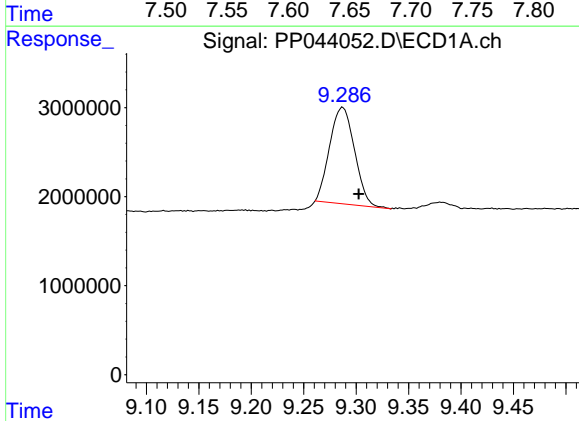
R.T.: 8.867 min
 Delta R.T.: 0.008 min
 Response: 63599
 Conc: 0.41 ng/ml

Instrument :
 ECD_P
 ClientSampleId :



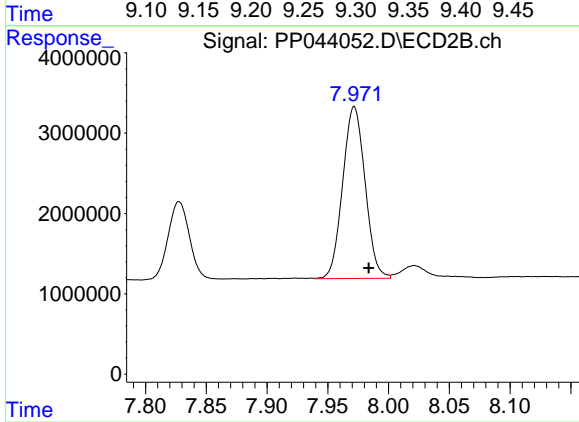
#43 AR-1268-3

R.T.: 7.653 min
 Delta R.T.: -0.012 min
 Response: 1223878
 Conc: 6.29 ng/ml



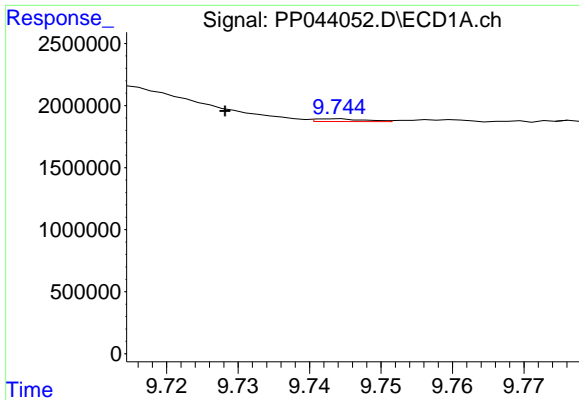
#44 AR-1268-4

R.T.: 9.287 min
 Delta R.T.: -0.015 min
 Response: 17907026
 Conc: 286.19 ng/ml



#44 AR-1268-4

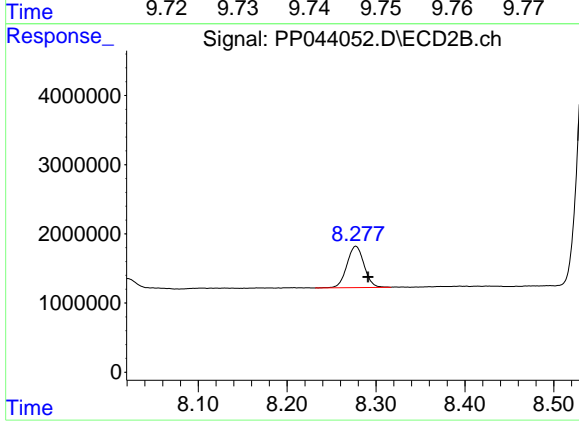
R.T.: 7.972 min
 Delta R.T.: -0.012 min
 Response: 27457026
 Conc: 305.33 ng/ml



#45 AR-1268-5

R.T.: 9.744 min
Delta R.T.: 0.015 min
Response: 102476
Conc: 0.23 ng/ml

Instrument :
ECD_P
ClientSampleId :



#45 AR-1268-5

R.T.: 8.277 min
Delta R.T.: -0.014 min
Response: 8035228
Conc: 13.37 ng/ml