

Data Path : Z:\pestpcbsrv\HPCHEM1\ECD_P\Data\PP022522\
 Data File : PP044001.D
 Signal(s) : Signal #1: ECD1A.ch Signal #2: ECD2B.ch
 Acq On : 25 Feb 2022 12:12
 Operator : YP\AJ
 Sample : AR1254CCC500
 Misc :
 ALS Vial : 6 Sample Multiplier: 1

Instrument :
 ECD_P
ClientSampleId :
 AR1254CCC500

Integration File signal 1: autoint1.e
 Integration File signal 2: autoint2.e
 Quant Time: Feb 25 23:34:50 2022
 Quant Method : Z:\pestpcbsrv\HPCHEM1\ECD_P\methods\PP021022.M
 Quant Title : GC EXTRACTABLES
 QLast Update : Fri Feb 11 04:48:05 2022
 Response via : Initial Calibration
 Integrator: ChemStation

Volume Inj. : 2 µl
 Signal #1 Phase : ZB-MR1 Signal #2 Phase: ZB-MR2
 Signal #1 Info : 30Mx0.32mmx 0.50µ Signal #2 Info : 30M x 0.32mm x 0.25µm

Compound	RT#1	RT#2	Resp#1	Resp#2	ng/ml	ng/ml

System Monitoring Compounds						
1) SA Tetrachlo...	3.917	3.171	112.2E6	104.0E6	50.730	55.392
2) SA Decachlor...	10.058	8.543	67578637	82694918	56.890	50.971
Target Compounds						
26) L6 AR-1254-1	6.095	5.172	33594631	45200013	444.629	517.562
27) L6 AR-1254-2	6.335	5.332	54865883	38372814	489.138	503.070
28) L6 AR-1254-3	6.736	5.764	58182327	60935695	502.818	497.198
29) L6 AR-1254-4	7.049	6.014	40198404	39246594	503.528	497.265
30) L6 AR-1254-5	7.510	6.465	42408236	57686162	494.481	498.823

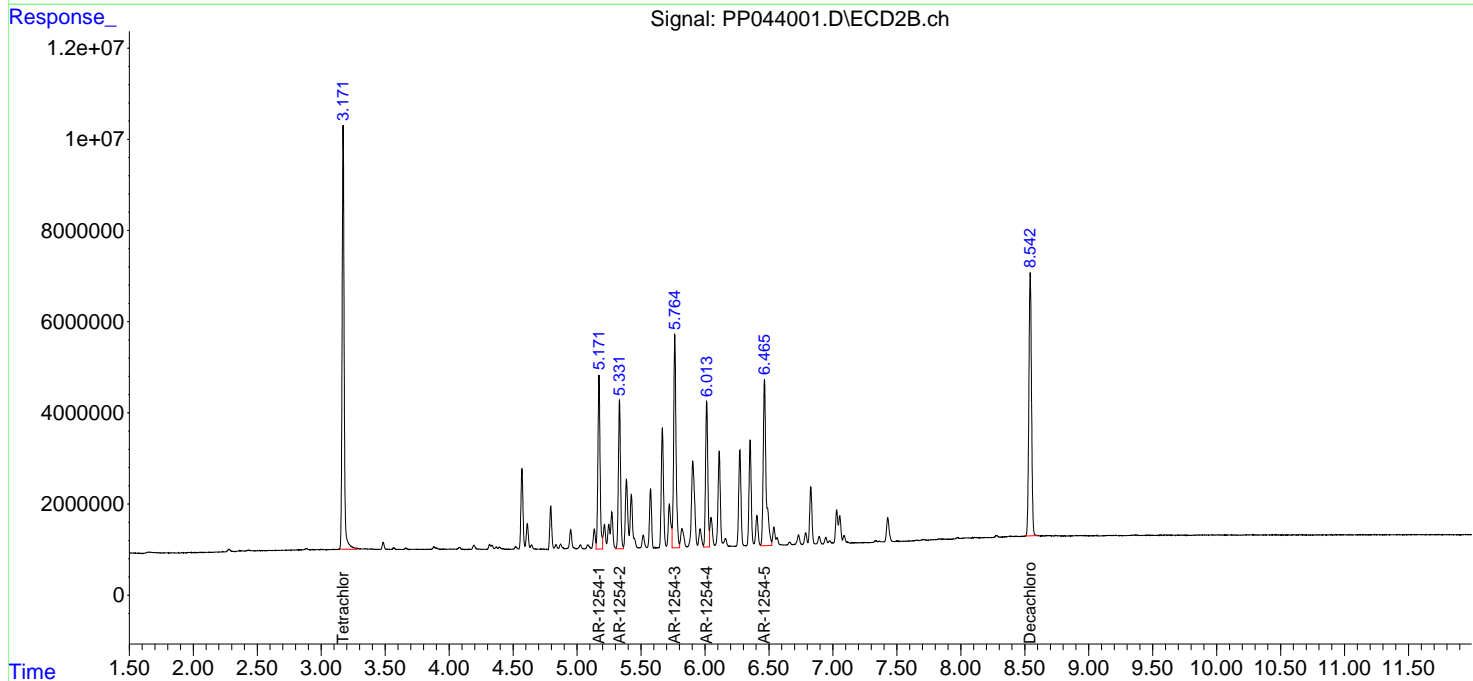
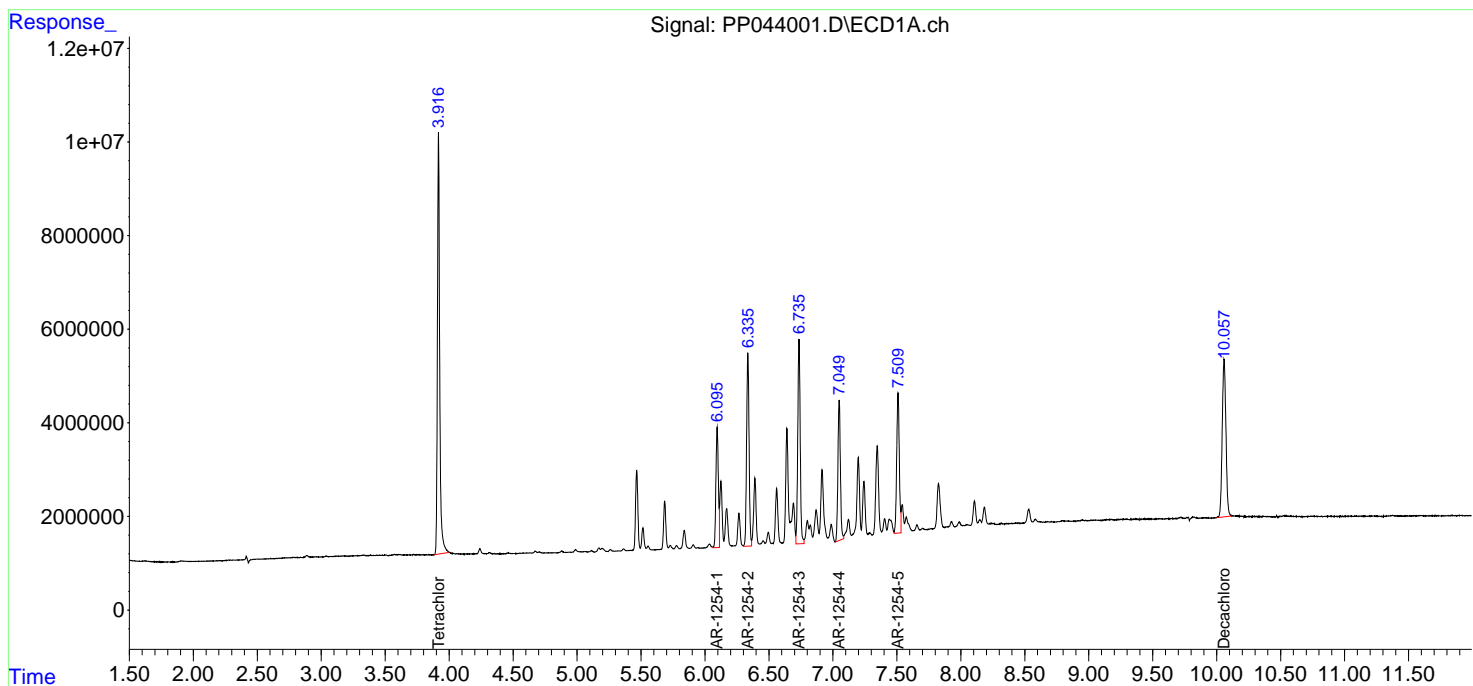
(f)=RT Delta > 1/2 Window (#)=Amounts differ by > 25% (m)=manual int.

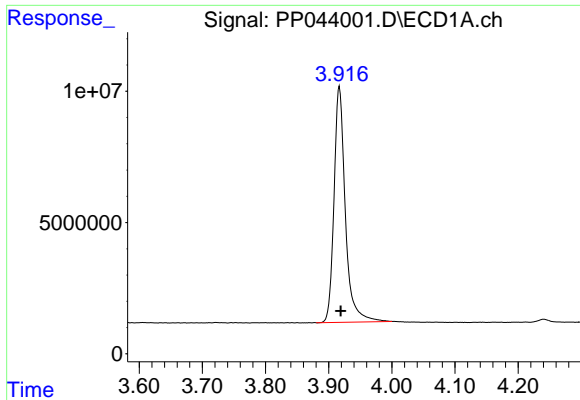
Data Path : Z:\pestpcbsrv\HPCHEM1\ECD_P\Data\PP022522\
 Data File : PP044001.D
 Signal(s) : Signal #1: ECD1A.ch Signal #2: ECD2B.ch
 Acq On : 25 Feb 2022 12:12
 Operator : YP\AJ
 Sample : AR1254CCC500
 Misc :
 ALS Vial : 6 Sample Multiplier: 1

Instrument :
 ECD_P
 ClientSampleId :
 AR1254CCC500

Integration File signal 1: autoint1.e
 Integration File signal 2: autoint2.e
 Quant Time: Feb 25 23:34:50 2022
 Quant Method : Z:\pestpcbsrv\HPCHEM1\ECD_P\methods\PP021022.M
 Quant Title : GC EXTRACTABLES
 QLast Update : Fri Feb 11 04:48:05 2022
 Response via : Initial Calibration
 Integrator: ChemStation

Volume Inj. : 2 µl
 Signal #1 Phase : ZB-MR1 Signal #2 Phase: ZB-MR2
 Signal #1 Info : 30Mx0.32mmx 0.50µ Signal #2 Info : 30M x 0.32mm x 0.25µm

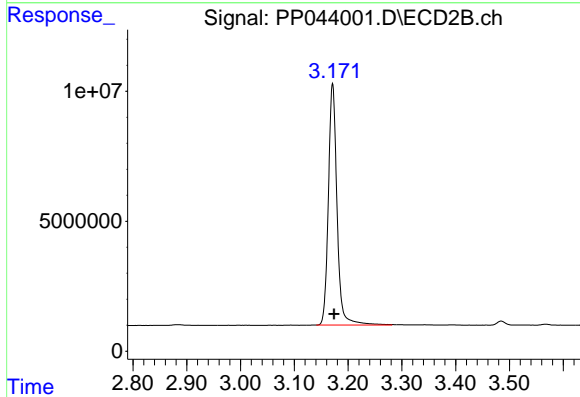




#1 Tetrachloro-m-xylene

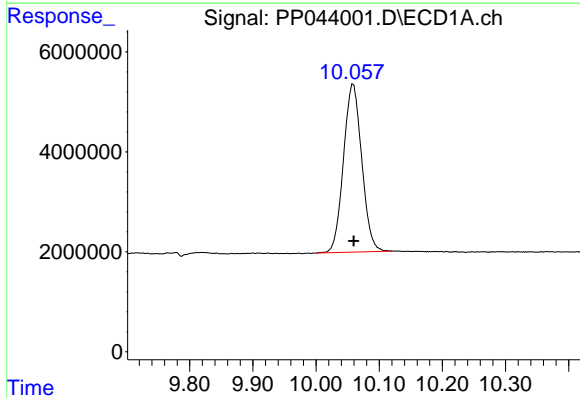
R.T.: 3.917 min
 Delta R.T.: -0.002 min
 Response: 112166775
 Conc: 50.73 ng/ml

Instrument :
 ECD_P
 ClientSampleId :
 AR1254CCC500



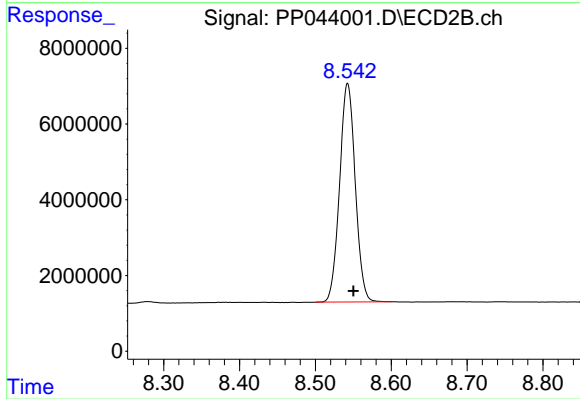
#1 Tetrachloro-m-xylene

R.T.: 3.171 min
 Delta R.T.: -0.003 min
 Response: 104041142
 Conc: 55.39 ng/ml



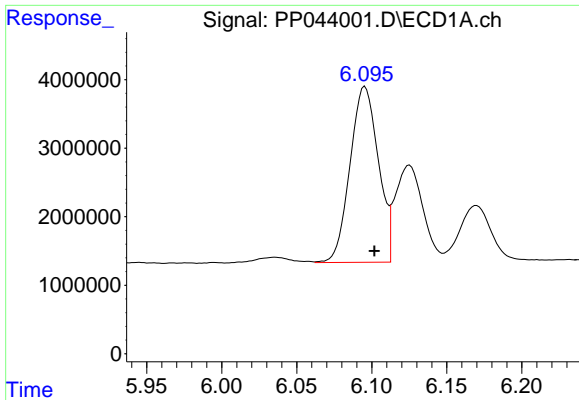
#2 Decachlorobiphenyl

R.T.: 10.058 min
 Delta R.T.: -0.002 min
 Response: 67578637
 Conc: 56.89 ng/ml



#2 Decachlorobiphenyl

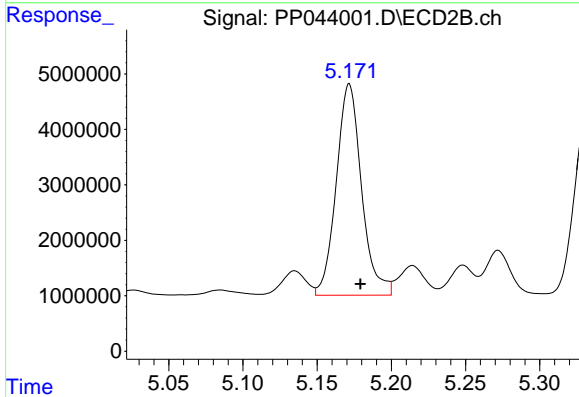
R.T.: 8.543 min
 Delta R.T.: -0.008 min
 Response: 82694918
 Conc: 50.97 ng/ml



#26 AR-1254-1

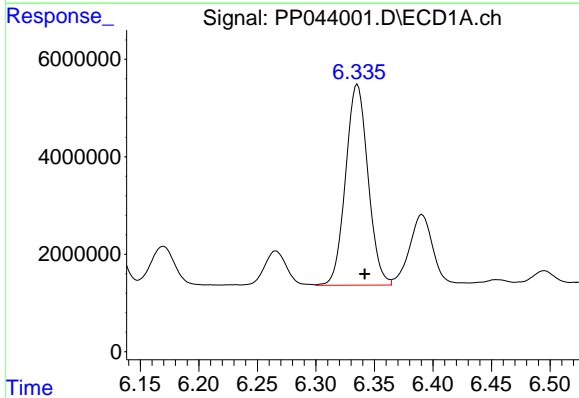
R.T.: 6.095 min
 Delta R.T.: -0.006 min
 Response: 33594631
 Conc: 444.63 ng/ml

Instrument :
 ECD_P
 ClientSampleId :
 AR1254CCC500



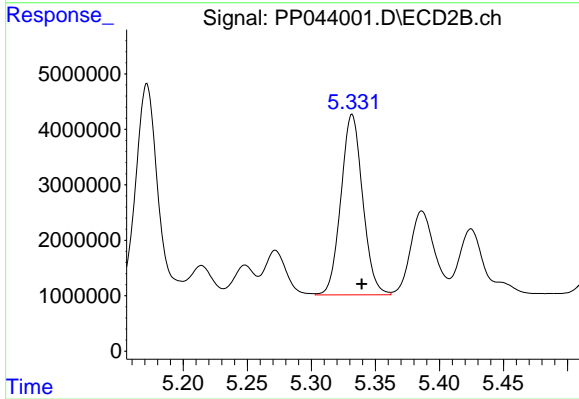
#26 AR-1254-1

R.T.: 5.172 min
 Delta R.T.: -0.007 min
 Response: 45200013
 Conc: 517.56 ng/ml



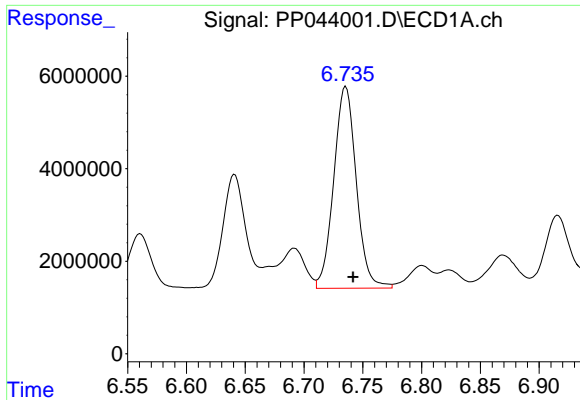
#27 AR-1254-2

R.T.: 6.335 min
 Delta R.T.: -0.006 min
 Response: 54865883
 Conc: 489.14 ng/ml



#27 AR-1254-2

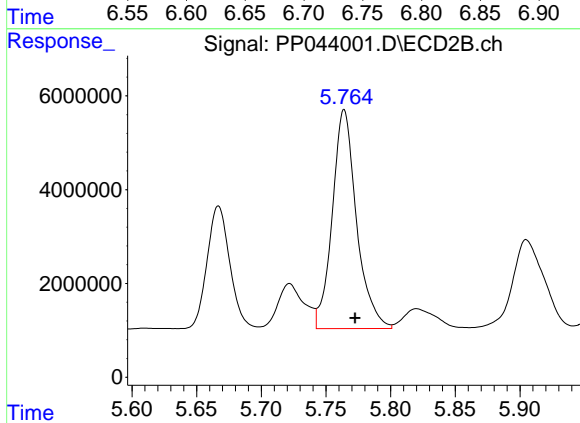
R.T.: 5.332 min
 Delta R.T.: -0.008 min
 Response: 38372814
 Conc: 503.07 ng/ml



#28 AR-1254-3

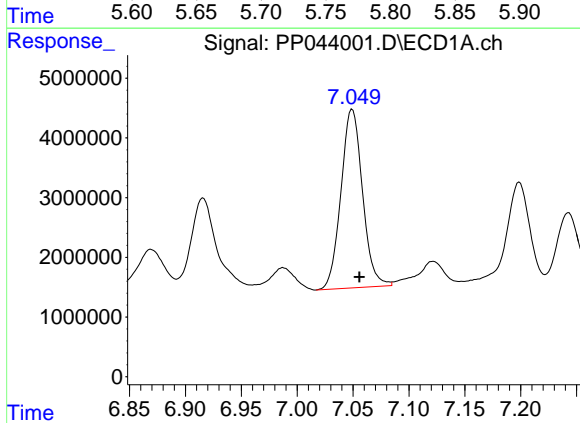
R.T.: 6.736 min
 Delta R.T.: -0.006 min
 Response: 58182327
 Conc: 502.82 ng/ml

Instrument :
 ECD_P
 ClientSampleId :
 AR1254CCC500



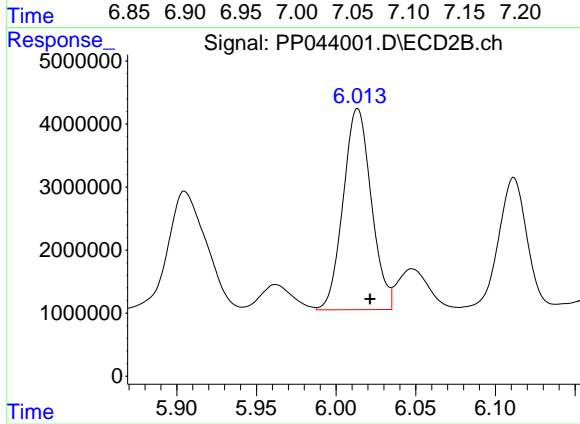
#28 AR-1254-3

R.T.: 5.764 min
 Delta R.T.: -0.008 min
 Response: 60935695
 Conc: 497.20 ng/ml



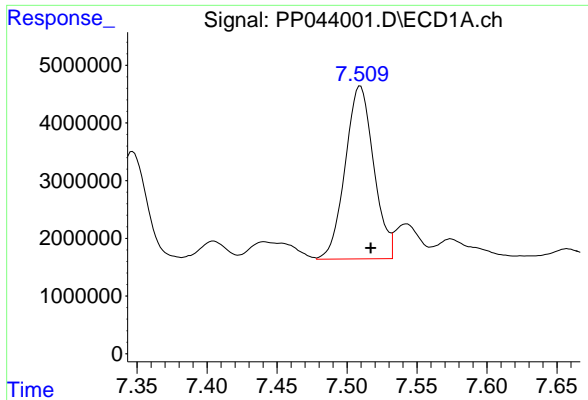
#29 AR-1254-4

R.T.: 7.049 min
 Delta R.T.: -0.006 min
 Response: 40198404
 Conc: 503.53 ng/ml



#29 AR-1254-4

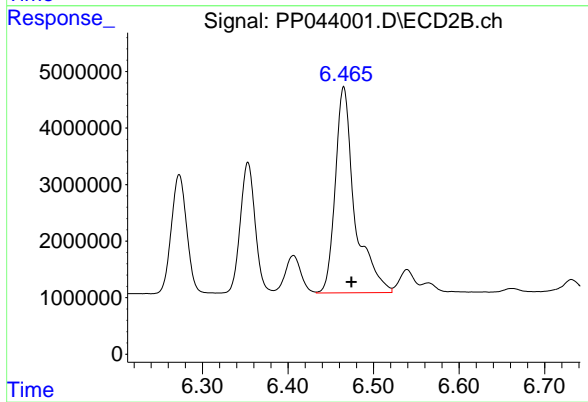
R.T.: 6.014 min
 Delta R.T.: -0.008 min
 Response: 39246594
 Conc: 497.26 ng/ml



#30 AR-1254-5

R.T.: 7.510 min
Delta R.T.: -0.007 min
Response: 42408236
Conc: 494.48 ng/ml

Instrument :
ECD_P
ClientSampleId :
AR1254CCC500



#30 AR-1254-5

R.T.: 6.465 min
Delta R.T.: -0.009 min
Response: 57686162
Conc: 498.82 ng/ml