

Data Path : Z:\pestpcbsrv\HPCHEM1\ECD_P\Data\PP022525\
 Data File : PP070047.D
 Signal(s) : Signal #1: ECD1A.ch Signal #2: ECD2B.ch
 Acq On : 25 Feb 2025 16:00
 Operator : YP\AJ
 Sample : Q1421-01
 Misc :
 ALS Vial : 17 Sample Multiplier: 1

Instrument :
 ECD_P
 ClientSampleId :
 P001-CLAY-CF01-01

Integration File signal 1: autoint1.e
 Integration File signal 2: autoint2.e
 Quant Time: Feb 26 03:57:14 2025
 Quant Method : Z:\pestpcbsrv\HPCHEM1\ECD_P\methods\PP022425.M
 Quant Title : GC EXTRACTABLES
 QLast Update : Tue Feb 25 05:10:19 2025
 Response via : Initial Calibration
 Integrator: ChemStation

Volume Inj. : 2 µl
 Signal #1 Phase : ZB-MR1 Signal #2 Phase: ZB-MR2
 Signal #1 Info : 30Mx0.32mmx 0.50µ Signal #2 Info : 30M x 0.32mm x 0.25µm

Compound	RT#1	RT#2	Resp#1	Resp#2	ng/ml	ng/ml

System Monitoring Compounds						
1) SA Tetrachlo...	4.527	3.832	30945289	20412188	21.085	21.351
2) SA Decachlor...	10.257	8.890	21804034	21419560	19.143	19.758

Target Compounds

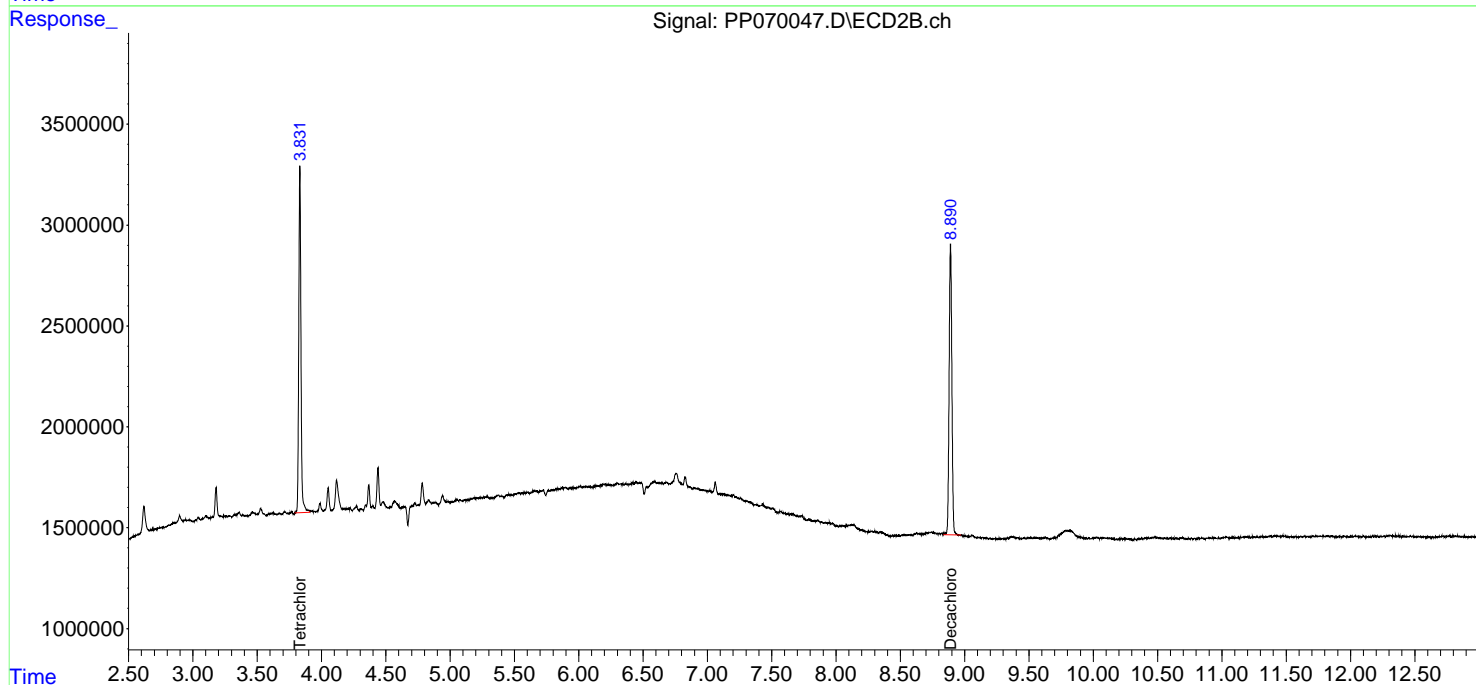
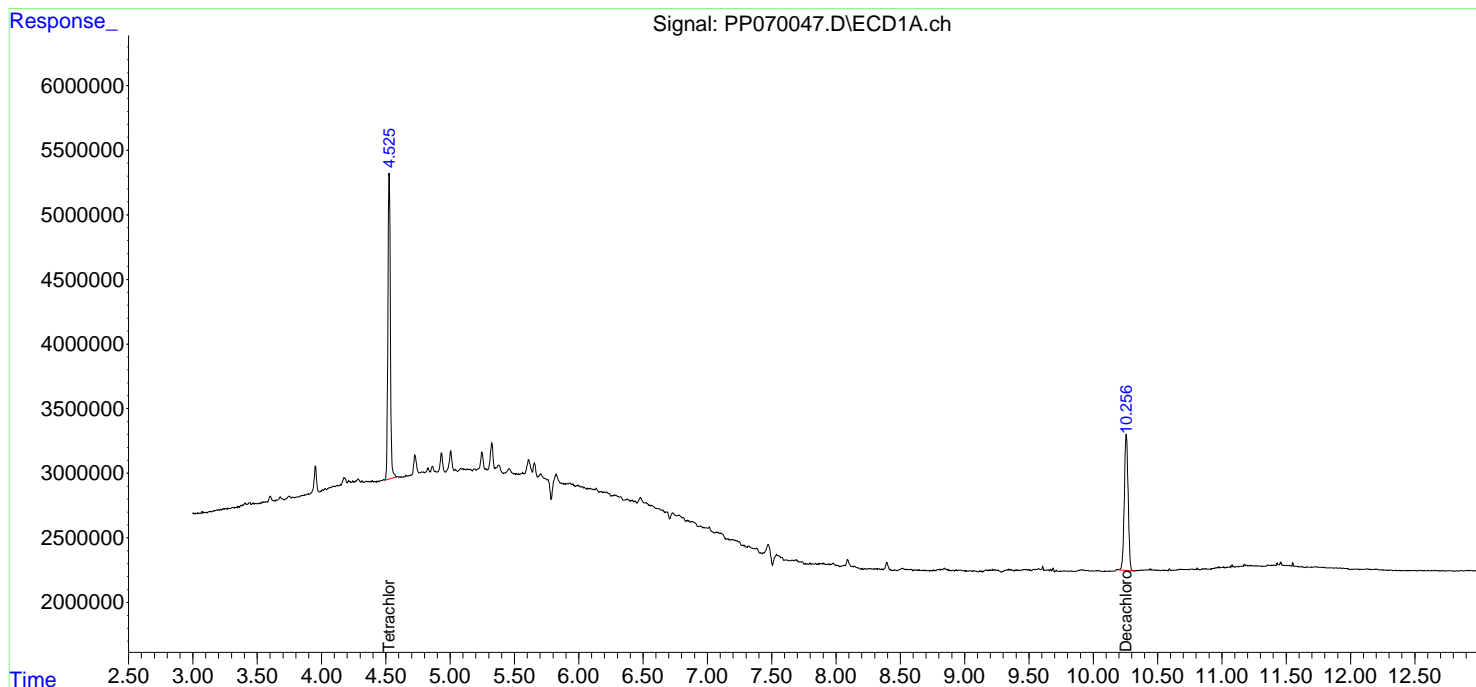
(f)=RT Delta > 1/2 Window (#)=Amounts differ by > 25% (m)=manual int.

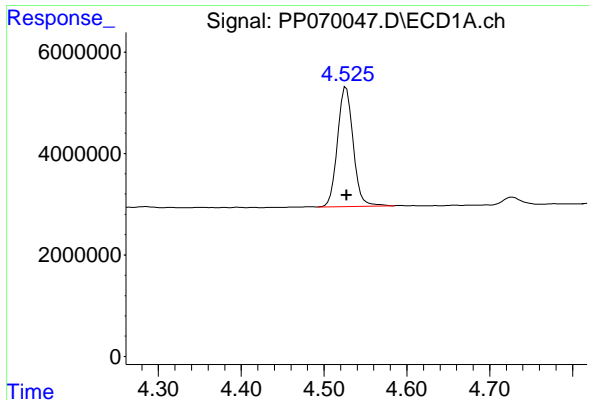
Data Path : Z:\pestpcbsrv\HPCHEM1\ECD_P\Data\PP022525\
 Data File : PP070047.D
 Signal(s) : Signal #1: ECD1A.ch Signal #2: ECD2B.ch
 Acq On : 25 Feb 2025 16:00
 Operator : YP\AJ
 Sample : Q1421-01
 Misc :
 ALS Vial : 17 Sample Multiplier: 1

Instrument :
 ECD_P
 ClientSampleId :
 P001-CLAY-CF01-01

Integration File signal 1: autoint1.e
 Integration File signal 2: autoint2.e
 Quant Time: Feb 26 03:57:14 2025
 Quant Method : Z:\pestpcbsrv\HPCHEM1\ECD_P\methods\PP022425.M
 Quant Title : GC EXTRACTABLES
 QLast Update : Tue Feb 25 05:10:19 2025
 Response via : Initial Calibration
 Integrator: ChemStation

Volume Inj. : 2 µl
 Signal #1 Phase : ZB-MR1 Signal #2 Phase: ZB-MR2
 Signal #1 Info : 30Mx0.32mmx 0.50µm Signal #2 Info : 30M x 0.32mm x 0.25µm

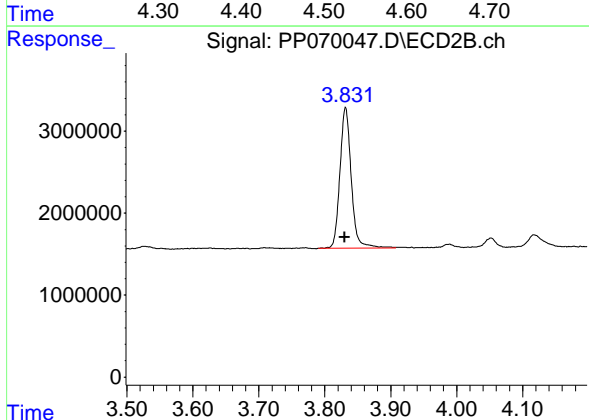




#1 Tetrachloro-m-xylene

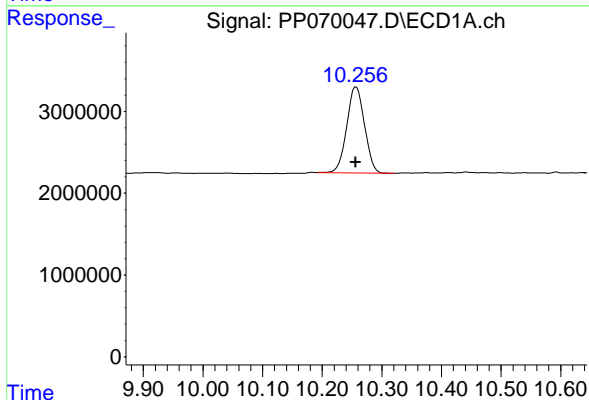
R.T.: 4.527 min
 Delta R.T.: 0.000 min
 Response: 30945289
 Conc: 21.09 ng/ml

Instrument : ECD_P
 ClientSampleId : P001-CLAY-CF01-01



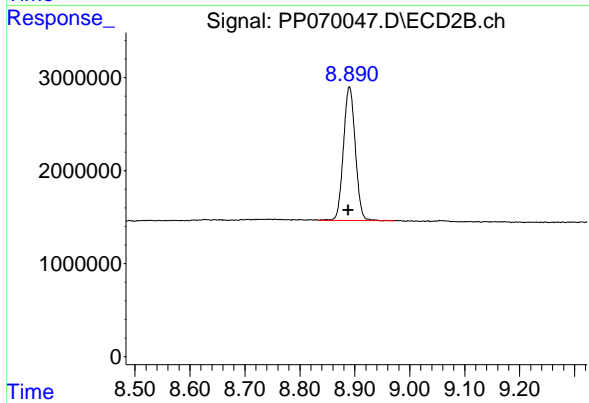
#1 Tetrachloro-m-xylene

R.T.: 3.832 min
 Delta R.T.: 0.001 min
 Response: 20412188
 Conc: 21.35 ng/ml



#2 Decachlorobiphenyl

R.T.: 10.257 min
 Delta R.T.: 0.000 min
 Response: 21804034
 Conc: 19.14 ng/ml



#2 Decachlorobiphenyl

R.T.: 8.890 min
 Delta R.T.: 0.002 min
 Response: 21419560
 Conc: 19.76 ng/ml