

Data Path : Z:\pestpcbsrv\HPCHEM1\ECD_P\Data\PP022624\
 Data File : PP063452.D
 Signal(s) : Signal #1: ECD1A.ch Signal #2: ECD2B.ch
 Acq On : 27 Feb 2024 00:46
 Operator : YP\AJ
 Sample : P1524-07
 Misc :
 ALS Vial : 42 Sample Multiplier: 1

Instrument :
 ECD_P
ClientSampleId :
 20240767-AMENDED-COMP-39N-N-3-02

Integration File signal 1: autoint1.e
 Integration File signal 2: autoint2.e
 Quant Time: Feb 27 01:38:19 2024
 Quant Method : Z:\pestpcbsrv\HPCHEM1\ECD_P\methods\PP022624.M
 Quant Title : GC EXTRACTABLES
 QLast Update : Tue Feb 27 01:30:59 2024
 Response via : Initial Calibration
 Integrator: ChemStation

Volume Inj. : 2 µl
 Signal #1 Phase : ZB-MR1 Signal #2 Phase: ZB-MR2
 Signal #1 Info : 30Mx0.32mmx 0.50µ Signal #2 Info : 30M x 0.32mm x 0.25µm

Compound	RT#1	RT#2	Resp#1	Resp#2	ng/ml	ng/ml

System Monitoring Compounds						
1) SA Tetrachlo...	4.490	3.641	45834709	45445552	20.396	19.755
2) SA Decachlor...	10.359	8.684	41657002	43451985	21.497	21.299
Target Compounds						
8) L2 AR-1221-1	4.699	0.000	2189512	0	85.118	N.D. #
9) L2 AR-1221-2	0.000	3.942	0	770834	N.D.	39.905 #
28) L6 AR-1254-3	0.000	6.066f	0	3871106	N.D.	24.165 #
29) L6 AR-1254-4	7.429f	0.000	1784357	0	25.678	N.D. #

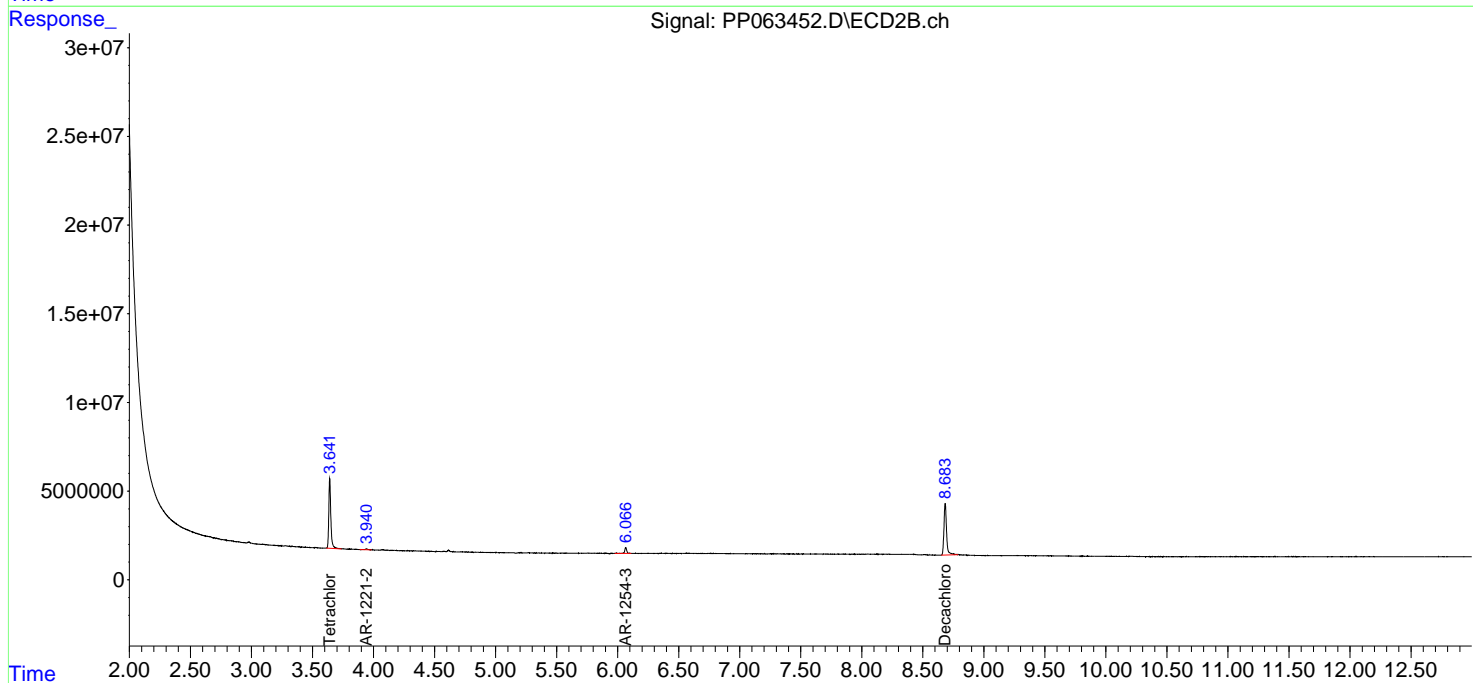
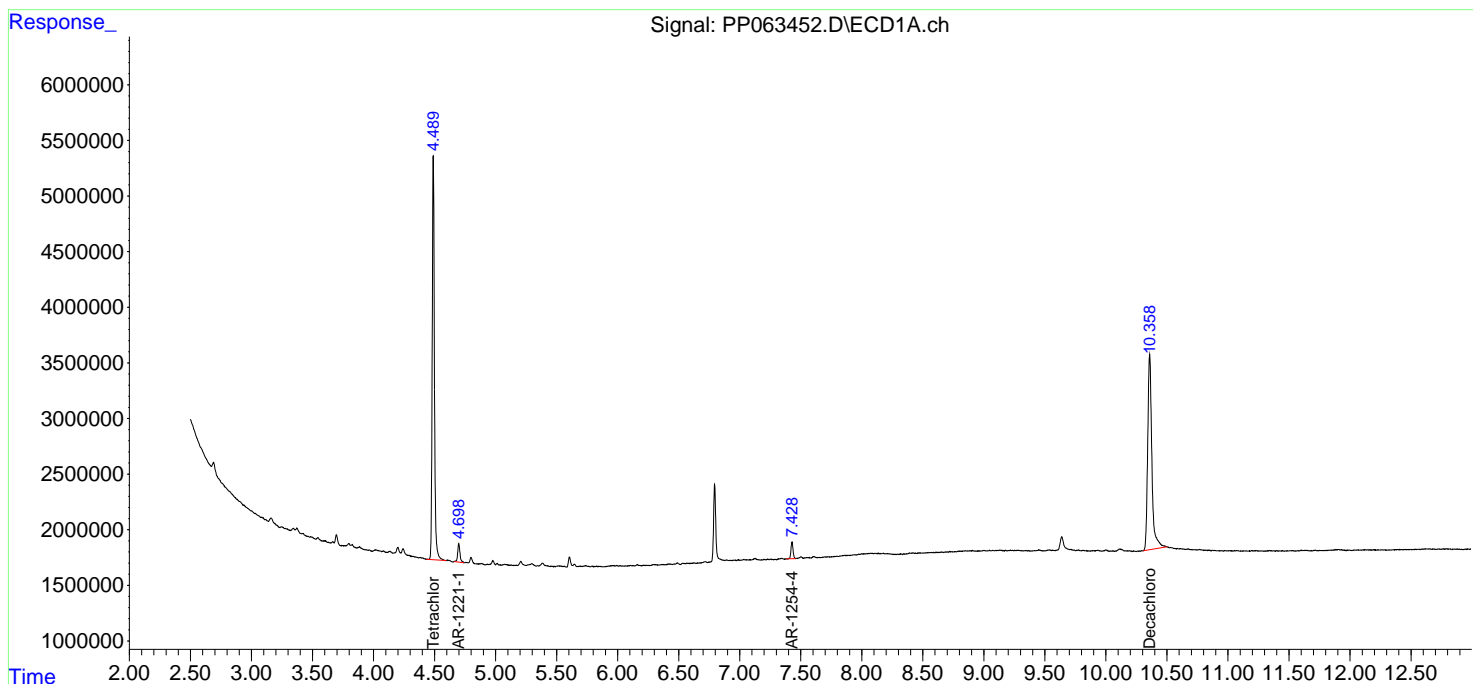
(f)=RT Delta > 1/2 Window (#)=Amounts differ by > 25% (m)=manual int.

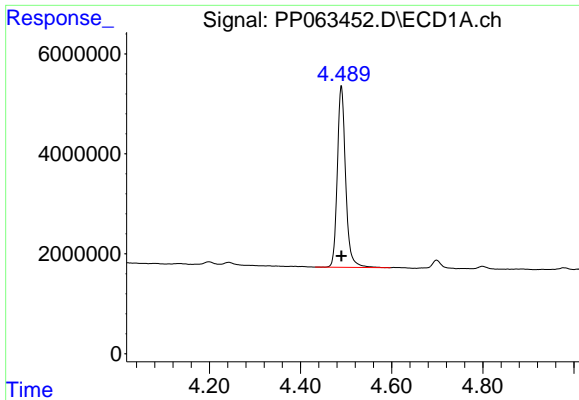
Data Path : Z:\pestpcbsrv\HPCHEM1\ECD_P\Data\PP022624\
 Data File : PP063452.D
 Signal(s) : Signal #1: ECD1A.ch Signal #2: ECD2B.ch
 Acq On : 27 Feb 2024 00:46
 Operator : YP\AJ
 Sample : P1524-07
 Misc :
 ALS Vial : 42 Sample Multiplier: 1

Instrument :
 ECD_P
ClientSampleId :
 20240767-AMENDED-COMP-39N-N-3-02

Integration File signal 1: autoint1.e
 Integration File signal 2: autoint2.e
 Quant Time: Feb 27 01:38:19 2024
 Quant Method : Z:\pestpcbsrv\HPCHEM1\ECD_P\methods\PP022624.M
 Quant Title : GC EXTRACTABLES
 QLast Update : Tue Feb 27 01:30:59 2024
 Response via : Initial Calibration
 Integrator: ChemStation

Volume Inj. : 2 µl
 Signal #1 Phase : ZB-MR1 Signal #2 Phase: ZB-MR2
 Signal #1 Info : 30Mx0.32mmx 0.50µ Signal #2 Info : 30M x 0.32mm x 0.25µm

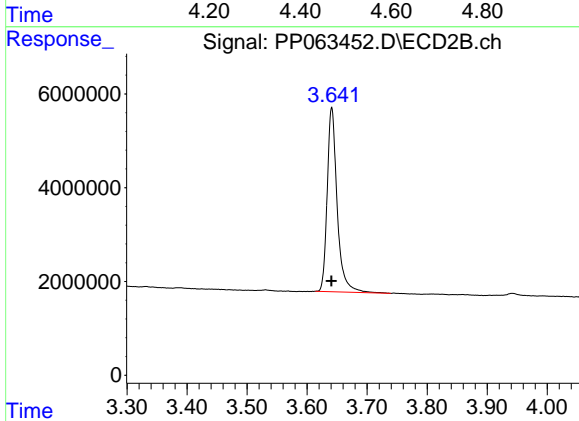




#1 Tetrachloro-m-xylene

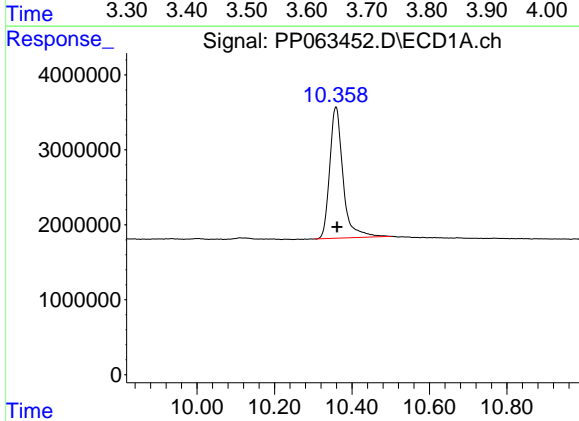
R.T.: 4.490 min
Delta R.T.: 0.000 min
Response: 45834709
Conc: 20.40 ng/ml

Instrument :
ECD_P
ClientSampleId :
20240767-AMENDED-COMP-39N-N-3-02



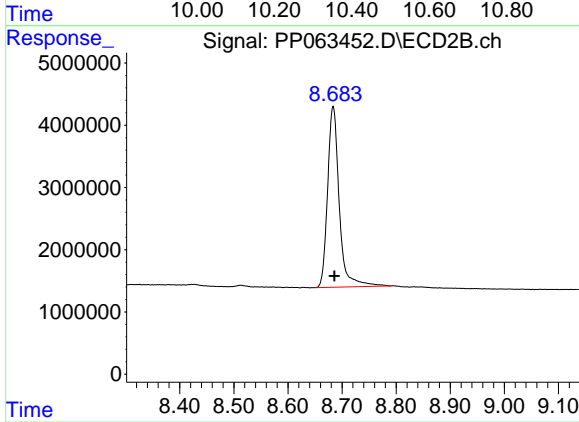
#1 Tetrachloro-m-xylene

R.T.: 3.641 min
Delta R.T.: 0.000 min
Response: 45445552
Conc: 19.75 ng/ml



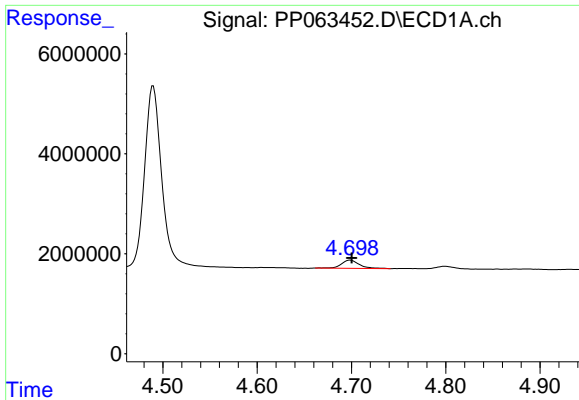
#2 Decachlorobiphenyl

R.T.: 10.359 min
Delta R.T.: -0.003 min
Response: 41657002
Conc: 21.50 ng/ml



#2 Decachlorobiphenyl

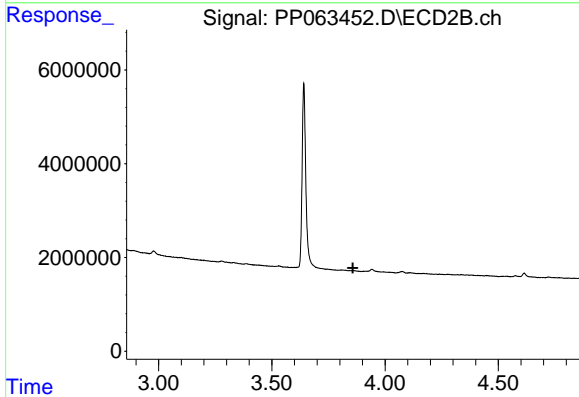
R.T.: 8.684 min
Delta R.T.: -0.002 min
Response: 43451985
Conc: 21.30 ng/ml



#8 AR-1221-1

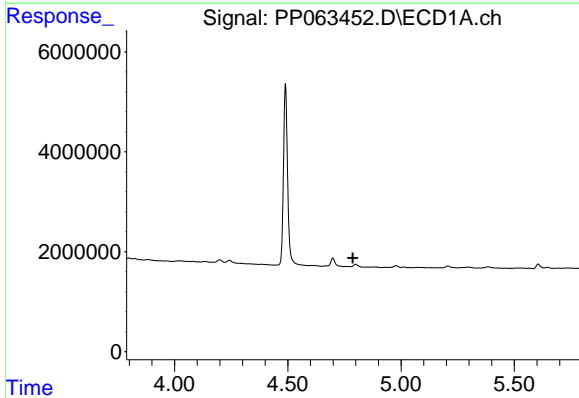
R.T.: 4.699 min
 Delta R.T.: -0.002 min
 Response: 2189512
 Conc: 85.12 ng/ml

Instrument :
 ECD_P
 ClientSampleId :
 20240767-AMENDED-COMP-39N-N-3-02



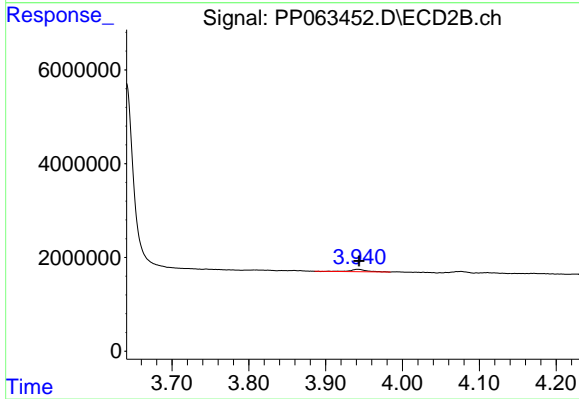
#8 AR-1221-1

R.T.: 0.000 min
 Exp R.T. : 3.858 min
 Response: 0
 Conc: N.D.



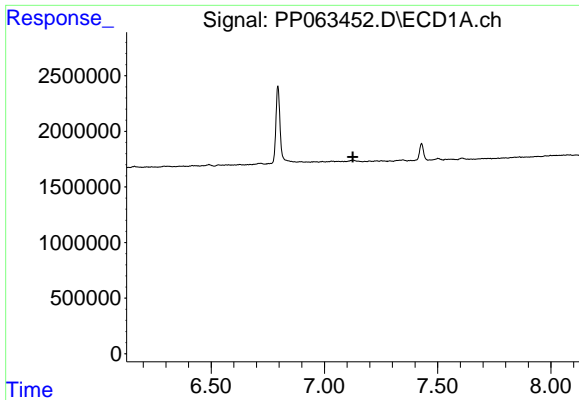
#9 AR-1221-2

R.T.: 0.000 min
 Exp R.T. : 4.787 min
 Response: 0
 Conc: N.D.



#9 AR-1221-2

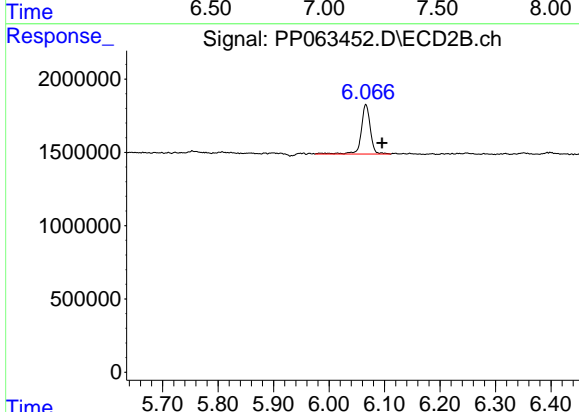
R.T.: 3.942 min
 Delta R.T.: -0.002 min
 Response: 770834
 Conc: 39.90 ng/ml



#28 AR-1254-3

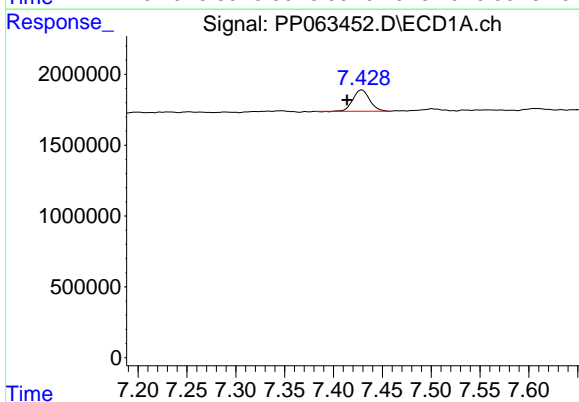
R.T.: 0.000 min
 Exp R.T.: 7.126 min
 Response: 0
 Conc: N.D.

Instrument :
 ECD_P
ClientSampleId :
 20240767-AMENDED-COMP-39N-N-3-02



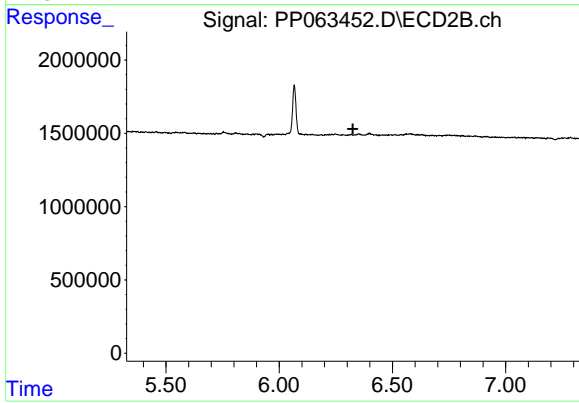
#28 AR-1254-3

R.T.: 6.066 min
 Delta R.T.: -0.029 min
 Response: 3871106
 Conc: 24.16 ng/ml



#29 AR-1254-4

R.T.: 7.429 min
 Delta R.T.: 0.015 min
 Response: 1784357
 Conc: 25.68 ng/ml



#29 AR-1254-4

R.T.: 0.000 min
 Exp R.T.: 6.325 min
 Response: 0
 Conc: N.D.