

Data Path : Z:\pestpcbsrv\HPCHEM1\ECD_P\Data\PP022723\
 Data File : PP056016.D
 Signal(s) : Signal #1: ECD1A.ch Signal #2: ECD2B.ch
 Acq On : 27 Feb 2023 15:23
 Operator : YP\AJ
 Sample : 01627-09
 Misc : AR1268 MDL 25 PPB
 ALS Vial : 23 Sample Multiplier: 1

Integration File signal 1: autoint1.e
 Integration File signal 2: autoint2.e
 Quant Time: Feb 27 20:38:33 2023
 Quant Method : Z:\pestpcbsrv\HPCHEM1\ECD_P\methods\PP021723.M
 Quant Title : GC EXTRACTABLES
 QLast Update : Mon Feb 20 05:24:03 2023
 Response via : Initial Calibration
 Integrator: ChemStation

Volume Inj. : 2 µl
 Signal #1 Phase : ZB-MR2 Signal #2 Phase: ZB-MR2
 Signal #1 Info : 30Mx0.32mmx 0.50µ Signal #2 Info : 30M x 0.32mm x 0.25µm

Compound	RT#1	RT#2	Resp#1	Resp#2	ng/ml	ng/ml

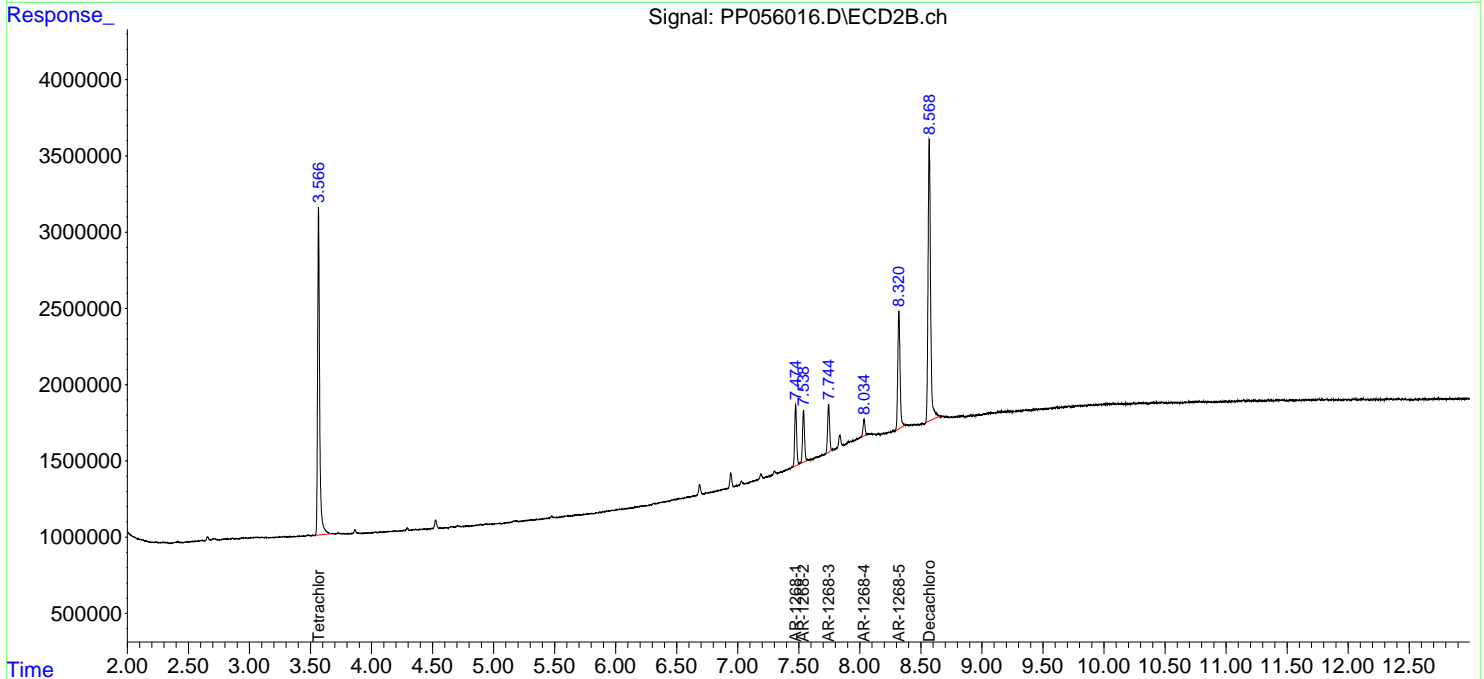
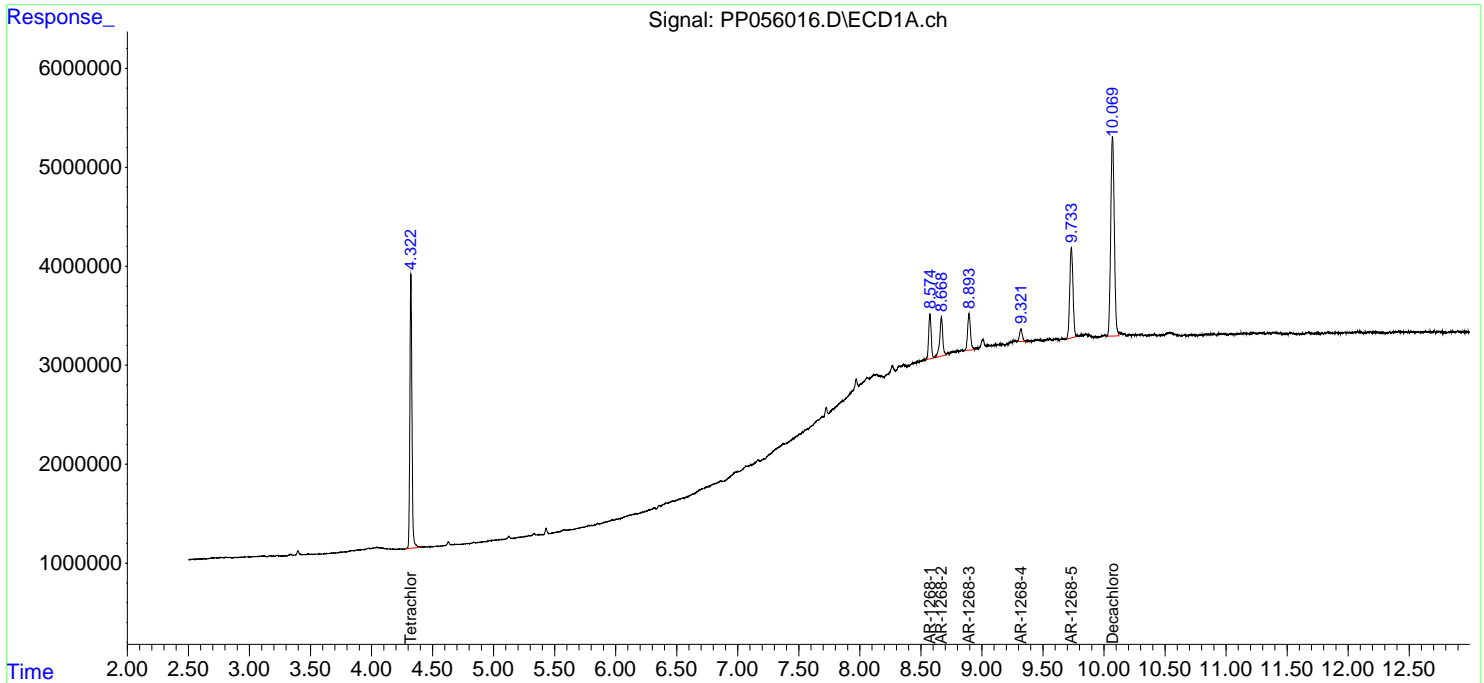
System Monitoring Compounds						
1) SA Tetrachlo...	4.323	3.566	32574387	24840664	20.217	17.012
2) SA Decachlor...	10.070	8.569	41096760	26334928	20.146	23.213
Target Compounds						
41) L9 AR-1268-1	8.574	7.475	6453660	4447837	22.613	26.454
42) L9 AR-1268-2	8.669	7.539	6754151	3877809	25.331	25.352
43) L9 AR-1268-3	8.894	7.744	6031741	3578652	25.631	26.081
44) L9 AR-1268-4	9.321	8.035	2057577	1236373	20.841	22.472
45) L9 AR-1268-5	9.733	8.320	16698377	10193267	22.181	25.271

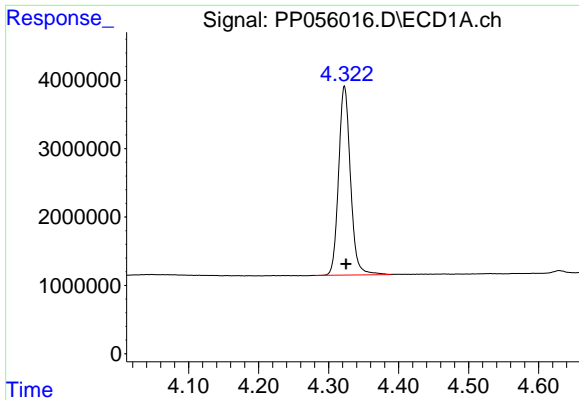
(f)=RT Delta > 1/2 Window (#)=Amounts differ by > 25% (m)=manual int.

Data Path : Z:\pestpcbsrv\HPCHEM1\ECD_P\Data\PP022723\
 Data File : PP056016.D
 Signal(s) : Signal #1: ECD1A.ch Signal #2: ECD2B.ch
 Acq On : 27 Feb 2023 15:23
 Operator : YP\AJ
 Sample : 01627-09
 Misc : AR1268 MDL 25 PPB
 ALS Vial : 23 Sample Multiplier: 1

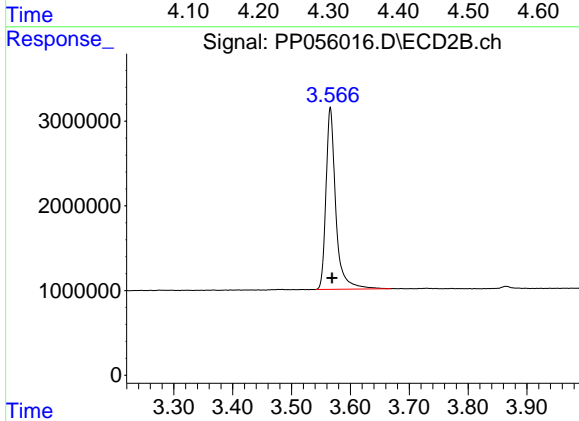
Integration File signal 1: autoint1.e
 Integration File signal 2: autoint2.e
 Quant Time: Feb 27 20:38:33 2023
 Quant Method : Z:\pestpcbsrv\HPCHEM1\ECD_P\methods\PP021723.M
 Quant Title : GC EXTRACTABLES
 QLast Update : Mon Feb 20 05:24:03 2023
 Response via : Initial Calibration
 Integrator: ChemStation

Volume Inj. : 2 µl
 Signal #1 Phase : ZB-MR1 Signal #2 Phase: ZB-MR2
 Signal #1 Info : 30Mx0.32mmx 0.50µ Signal #2 Info : 30M x 0.32mm x 0.25µm

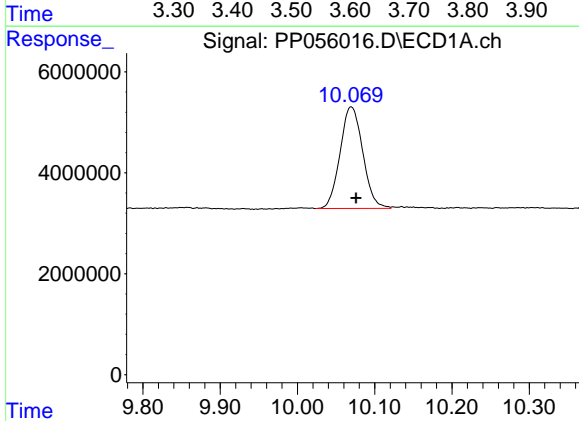




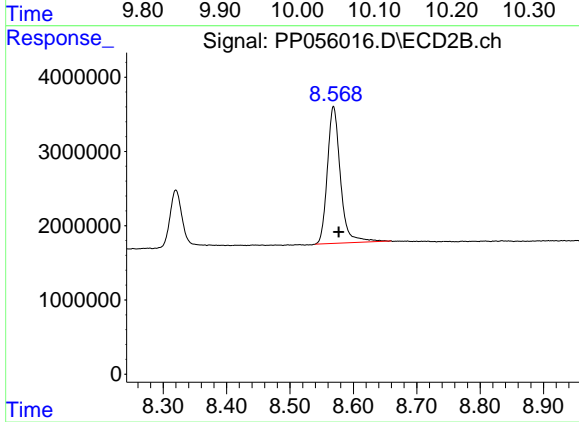
#1 Tetrachloro-m-xylene
R.T.: 4.323 min
Delta R.T.: -0.002 min
Response: 32574387
Conc: 20.22 ng/ml



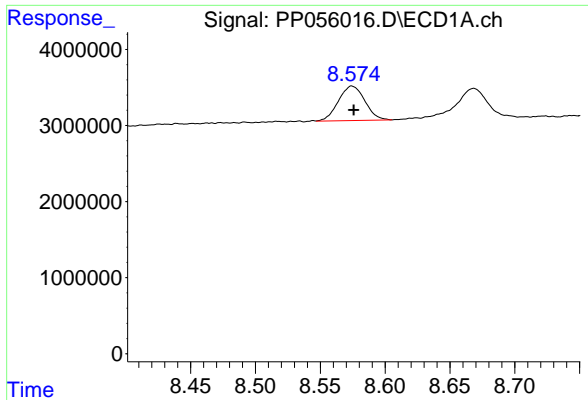
#1 Tetrachloro-m-xylene
R.T.: 3.566 min
Delta R.T.: -0.003 min
Response: 24840664
Conc: 17.01 ng/ml



#2 Decachlorobiphenyl
R.T.: 10.070 min
Delta R.T.: -0.006 min
Response: 41096760
Conc: 20.15 ng/ml

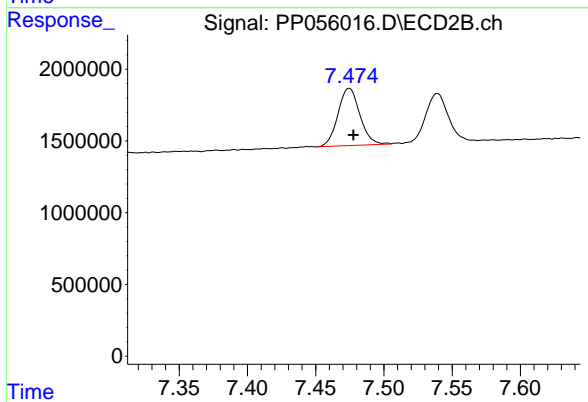


#2 Decachlorobiphenyl
R.T.: 8.569 min
Delta R.T.: -0.008 min
Response: 26334928
Conc: 23.21 ng/ml



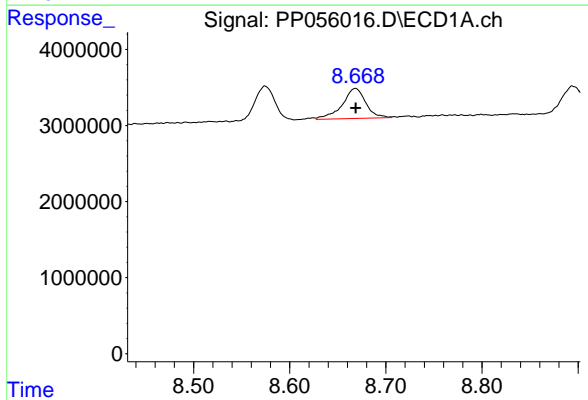
#41 AR-1268-1

R.T.: 8.574 min
Delta R.T.: -0.002 min
Response: 6453660
Conc: 22.61 ng/ml



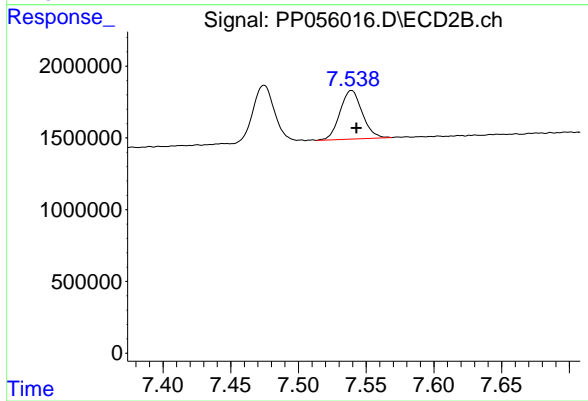
#41 AR-1268-1

R.T.: 7.475 min
Delta R.T.: -0.003 min
Response: 4447837
Conc: 26.45 ng/ml



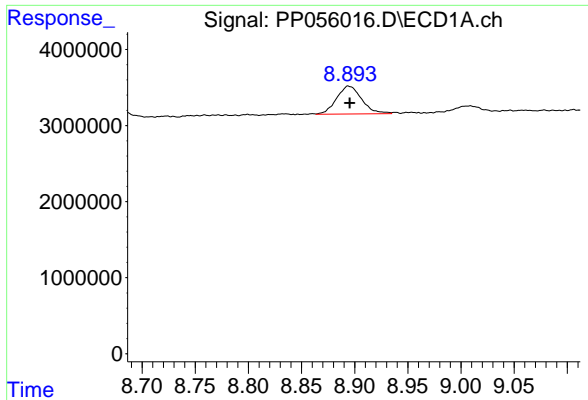
#42 AR-1268-2

R.T.: 8.669 min
Delta R.T.: 0.000 min
Response: 6754151
Conc: 25.33 ng/ml



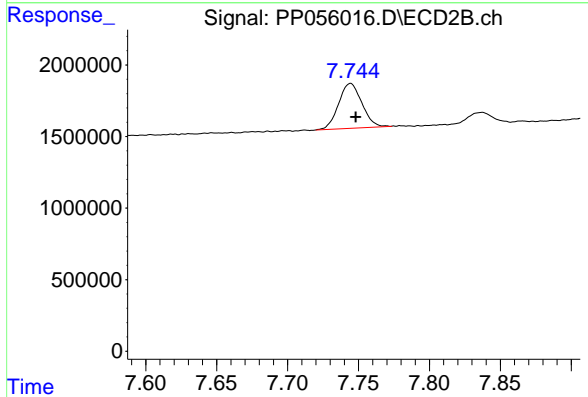
#42 AR-1268-2

R.T.: 7.539 min
Delta R.T.: -0.004 min
Response: 3877809
Conc: 25.35 ng/ml



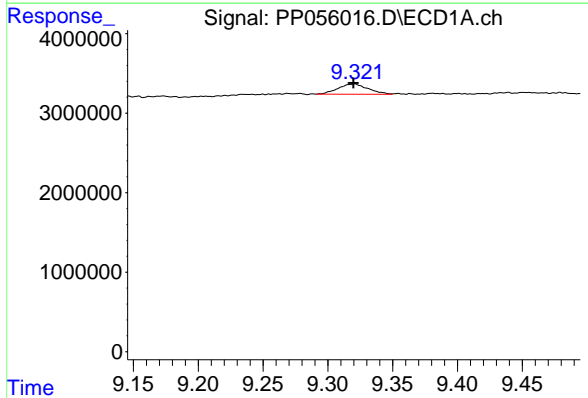
#43 AR-1268-3

R.T.: 8.894 min
Delta R.T.: -0.002 min
Response: 6031741
Conc: 25.63 ng/ml



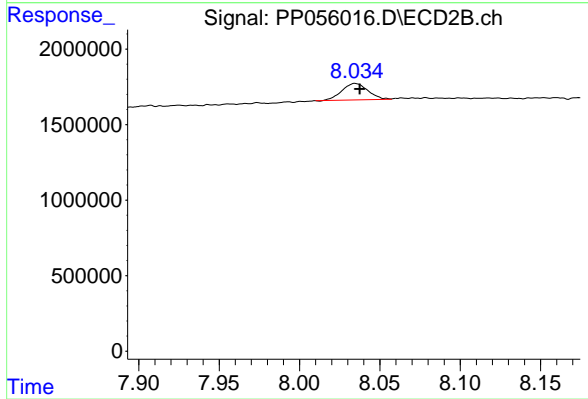
#43 AR-1268-3

R.T.: 7.744 min
Delta R.T.: -0.004 min
Response: 3578652
Conc: 26.08 ng/ml



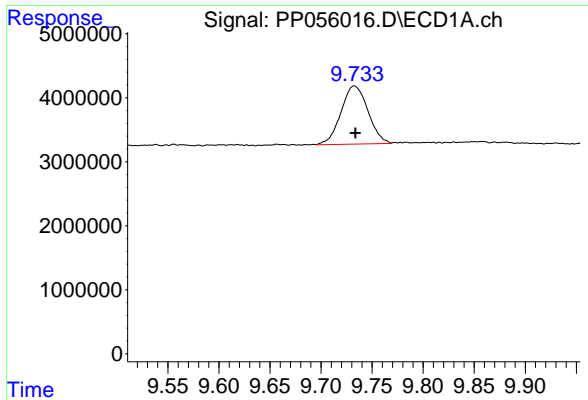
#44 AR-1268-4

R.T.: 9.321 min
Delta R.T.: 0.002 min
Response: 2057577
Conc: 20.84 ng/ml



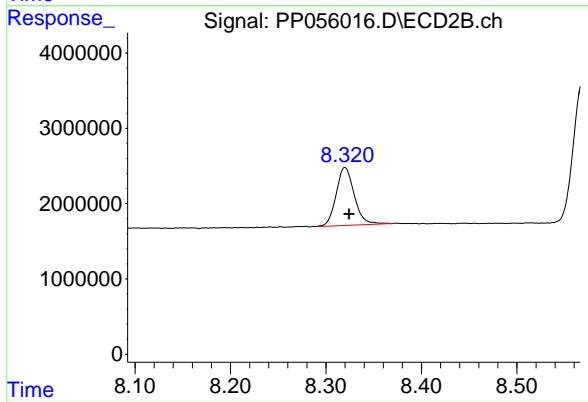
#44 AR-1268-4

R.T.: 8.035 min
Delta R.T.: -0.003 min
Response: 1236373
Conc: 22.47 ng/ml



#45 AR-1268-5

R.T.: 9.733 min
Delta R.T.: 0.000 min
Response: 16698377
Conc: 22.18 ng/ml



#45 AR-1268-5

R.T.: 8.320 min
Delta R.T.: -0.004 min
Response: 10193267
Conc: 25.27 ng/ml