

Data Path : P:\HPCHEM1\ECD_P\Data\PP022818\
 Data File : PP024045.D
 Signal(s) : Signal #1: ECD1A.CH Signal #2: ECD2B.CH
 Acq On : 28 Feb 2018 16:48
 Operator : UA/AJ
 Sample : J1705-06
 Misc :
 ALS Vial : 15 Sample Multiplier: 1

Integration File signal 1: autoint1.e
 Integration File signal 2: autoint2.e
 Quant Time: Mar 01 03:13:48 2018
 Quant Method : P:\HPCHEM1\ECD_P\methods\PP020618.M
 Quant Title : 8080.M
 QLast Update : Tue Feb 06 02:07:55 2018
 Response via : Initial Calibration
 Integrator: ChemStation 6890 Scale Mode: Large solvent peaks clipped

Volume Inj. : 2 µl
 Signal #1 Phase : Rtx-CLPesticides Signal #2 Phase: Rtx-CLPesticides2
 Signal #1 Info : 30M x 0.32mm x0.5 Signal #2 Info : 30M x 0.32mm x 0.25µm

Compound	RT#1	RT#2	Resp#1	Resp#2	ng/ml	ng/ml
----------	------	------	--------	--------	-------	-------

System Monitoring Compounds

4) S 2,4-DCAA	11.574	11.362	171.5E6	192.5E6	334.579	317.496
---------------	--------	--------	---------	---------	---------	---------

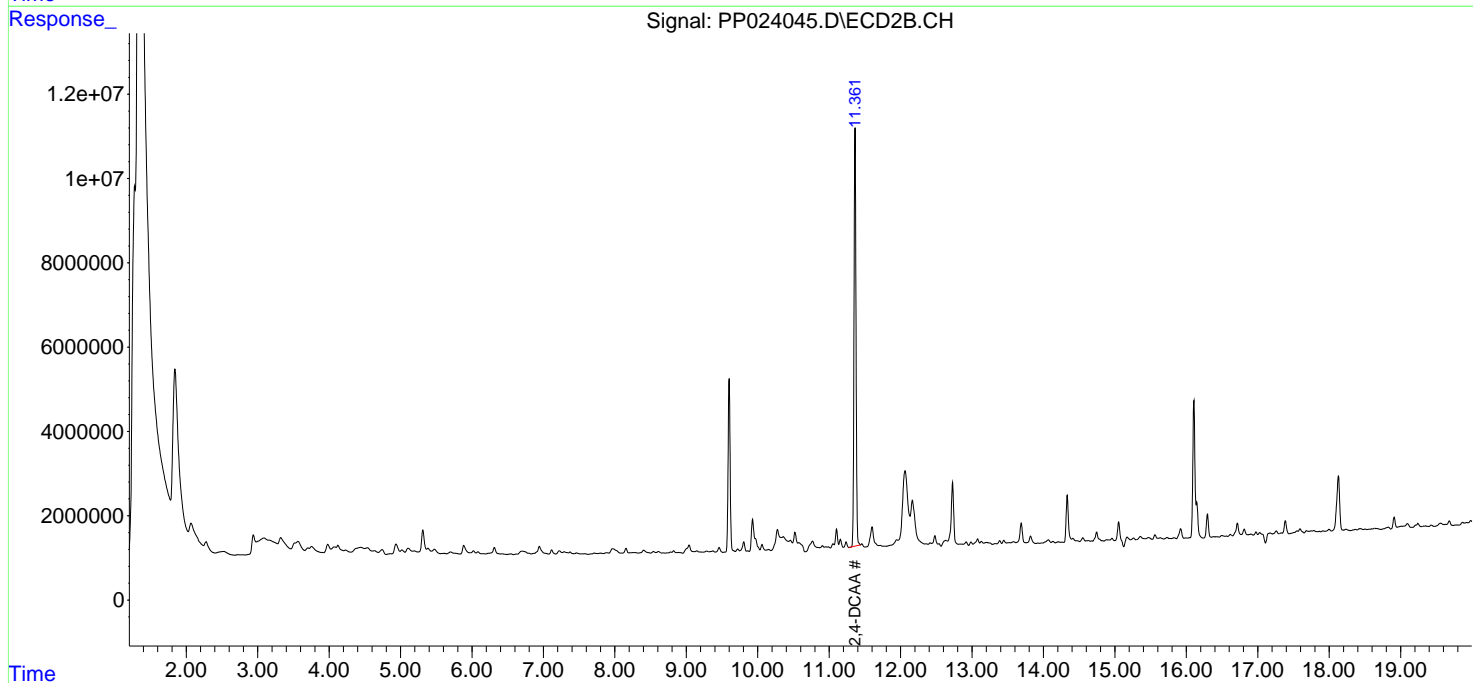
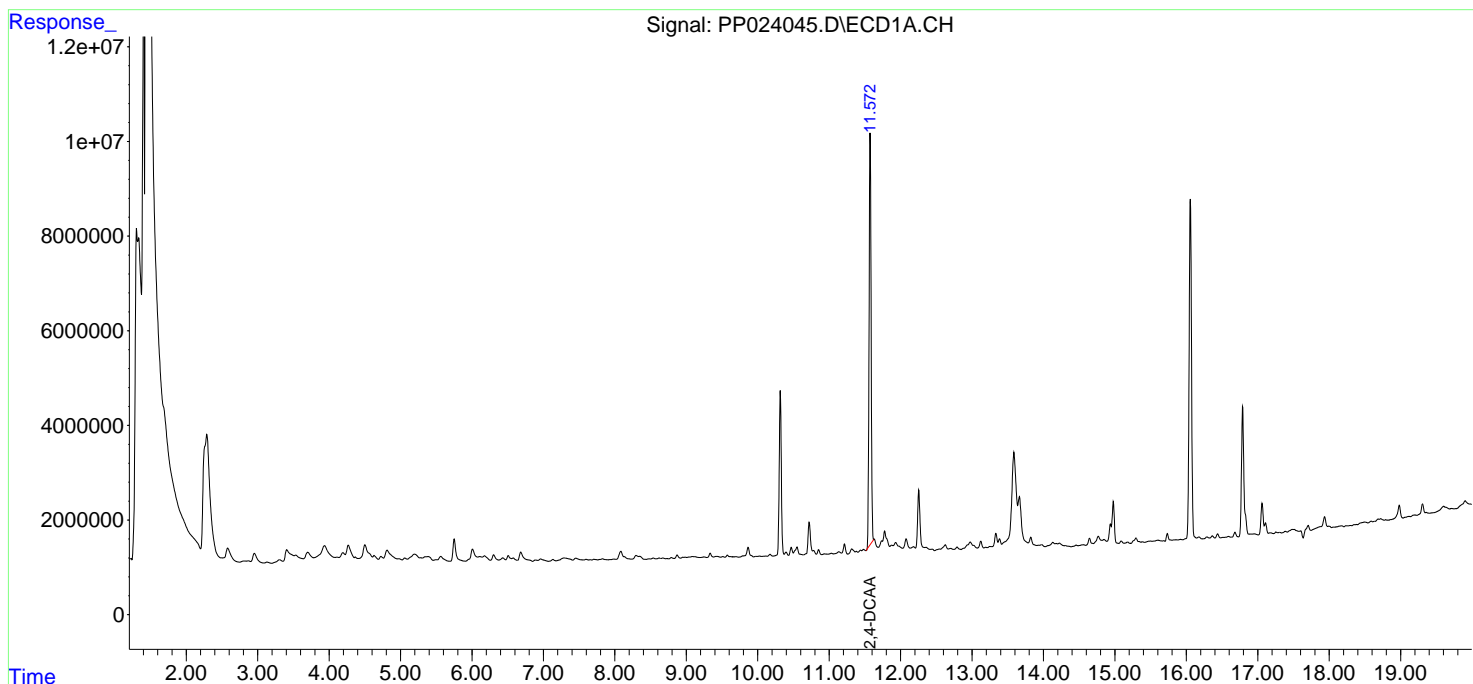
Target Compounds

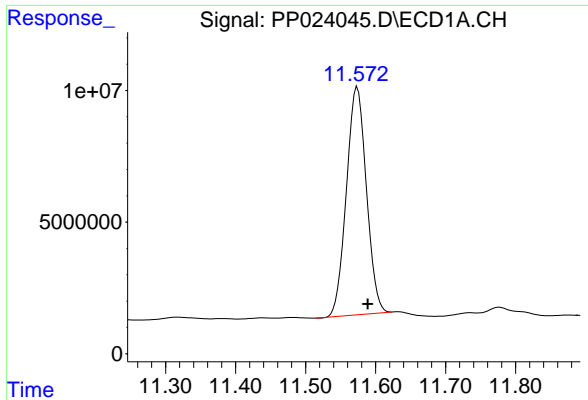
(f)=RT Delta > 1/2 Window (#)=Amounts differ by > 25% (m)=manual int.

Data Path : P:\HPCHEM1\ECD_P\Data\PP022818\
 Data File : PP024045.D
 Signal(s) : Signal #1: ECD1A.CH Signal #2: ECD2B.CH
 Acq On : 28 Feb 2018 16:48
 Operator : UA/AJ
 Sample : J1705-06
 Misc :
 ALS Vial : 15 Sample Multiplier: 1

Integration File signal 1: autoint1.e
 Integration File signal 2: autoint2.e
 Quant Time: Mar 01 03:13:48 2018
 Quant Method : P:\HPCHEM1\ECD_P\methods\PP020618.M
 Quant Title : 8080.M
 QLast Update : Tue Feb 06 02:07:55 2018
 Response via : Initial Calibration
 Integrator: ChemStation 6890 Scale Mode: Large solvent peaks clipped

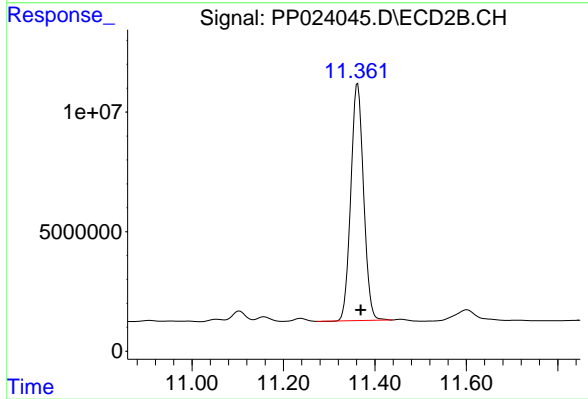
Volume Inj. : 2 µl
 Signal #1 Phase : Rtx-CLPesticides Signal #2 Phase: Rtx-CLPesticides2
 Signal #1 Info : 30M x 0.32mm x 0.5 Signal #2 Info : 30M x 0.32mm x 0.25µm





#4 2,4-DCAA

R.T.: 11.574 min
Delta R.T.: -0.015 min
Response: 171462241
Conc: 334.58 ng/ml



#4 2,4-DCAA

R.T.: 11.362 min
Delta R.T.: -0.006 min
Response: 192535352
Conc: 317.50 ng/ml