

Data Path : Z:\pestpcbsrv\HPCHEM1\ECD_P\Data\PP022823\
 Data File : PP056054.D
 Signal(s) : Signal #1: ECD1A.ch Signal #2: ECD2B.ch
 Acq On : 28 Feb 2023 13:42
 Operator : YP\AJ
 Sample : PB151102BL
 Misc :
 ALS Vial : 10 Sample Multiplier: 1

Instrument :
 ECD_P
 ClientSampleId :

Integration File signal 1: autoint1.e
 Integration File signal 2: autoint2.e
 Quant Time: Feb 28 22:20:25 2023
 Quant Method : Z:\pestpcbsrv\HPCHEM1\ECD_P\methods\PP021723.M
 Quant Title : GC EXTRACTABLES
 QLast Update : Mon Feb 20 05:24:03 2023
 Response via : Initial Calibration
 Integrator: ChemStation

Volume Inj. : 2 µl
 Signal #1 Phase : ZB-MR1 Signal #2 Phase: ZB-MR2
 Signal #1 Info : 30Mx0.32mmx 0.50µ Signal #2 Info : 30M x 0.32mm x 0.25µm

Compound	RT#1	RT#2	Resp#1	Resp#2	ng/ml	ng/ml

System Monitoring Compounds						
1) SA Tetrachlo...	4.324	3.566	37540095	28162160	23.299	19.287
2) SA Decachlor...	10.075	8.570	42657980	27233370	20.911	24.005
Target Compounds						
3) L1 AR-1016-1	5.491	4.665	12106	49438	0.203	1.098 #
4) L1 AR-1016-2	5.523	4.676	8785	11085	0.100	0.171 #
5) L1 AR-1016-3	5.581	0.000	28474	0	0.513	N.D. #
6) L1 AR-1016-4	5.678	4.895	27715	45583	0.622	1.525 #
7) L1 AR-1016-5	5.973	5.117f	16563	61223	0.343	1.549 #
8) L2 AR-1221-1	4.530	3.777	86973	9934	4.178	0.553 #
9) L2 AR-1221-2	4.631	3.864	584570	430137	36.750	32.752
10) L2 AR-1221-3	4.696	3.938	60370	11243	1.244	0.269 #
11) L3 AR-1232-1	4.696	3.938	60370	11243	1.524	0.327 #
12) L3 AR-1232-2	5.230	4.676	21408	11085	1.031	0.378 #
13) L3 AR-1232-3	5.523	0.000	8785	0	0.223	N.D. #
14) L3 AR-1232-4	5.678	4.929	27715	23648	1.415	1.560
15) L3 AR-1232-5	5.768	5.117	35150	61223	2.198	3.735 #
16) L4 AR-1242-1	5.502	4.665	17489	49438	0.362	1.344 #
17) L4 AR-1242-2	5.523	4.665	8785	49438	0.124	0.939 #
18) L4 AR-1242-3	5.581	0.000	28474	0	0.638	N.D. #
19) L4 AR-1242-4	5.678	4.929	27715	23648	0.767	0.766
20) L4 AR-1242-5	6.416	5.440	158267	66719	3.778	2.003 #
21) L5 AR-1248-1	5.491	4.665	12106	49438	0.333	1.770 #
22) L5 AR-1248-2	5.768	4.895	35150	45583	0.611	1.072 #
23) L5 AR-1248-3	5.973	4.929	16563	23648	0.255	0.531 #
24) L5 AR-1248-4	6.392	5.117f	150400	61223	2.073	1.196 #
25) L5 AR-1248-5	6.416	5.490	158267	34486	2.233	0.782 #
26) L6 AR-1254-1	6.341	5.440	4318	66719	0.059	0.907 #
27) L6 AR-1254-2	6.575	5.575f	16514	161992	0.143	2.575 #
28) L6 AR-1254-3	6.942	5.992	1063320	37147	8.640	0.379 #
29) L6 AR-1254-4	7.229	0.000	30510	0	0.332	N.D. #
30) L6 AR-1254-5	7.645	0.000	56325	0	0.536	N.D. #
31) L7 AR-1260-1	7.103	6.134	59638	46164	0.576	0.633
32) L7 AR-1260-2	7.366	6.334	283562	25974	2.255	0.318 #
33) L7 AR-1260-3	7.712	6.467	44672	73213	0.509	0.866 #
34) L7 AR-1260-4	7.965	6.951	687481	75252	6.397	1.176 #
35) L7 AR-1260-5	8.269	0.000	152290	0	0.738	N.D. #
36) L8 AR-1262-1	7.712	6.736	44672	23564	0.379	0.669 #
37) L8 AR-1262-2	8.269	6.951	152290	75252	0.694	1.013 #
38) L8 AR-1262-3	8.578	0.000	34543	0	0.226	N.D. #
39) L8 AR-1262-4	8.667	0.000	99917	0	1.327	N.D. #
40) L8 AR-1262-5	9.318	0.000	2701	0	0.033	N.D. #
41) L9 AR-1268-1	8.578	0.000	34543	0	0.121	N.D. #

Data Path : Z:\pestpcbsrv\HPCHEM1\ECD_P\Data\PP022823\
 Data File : PP056054.D
 Signal(s) : Signal #1: ECD1A.ch Signal #2: ECD2B.ch
 Acq On : 28 Feb 2023 13:42
 Operator : YP\AJ
 Sample : PB151102BL
 Misc :
 ALS Vial : 10 Sample Multiplier: 1

Instrument :
 ECD_P
 ClientSampleId :

Integration File signal 1: autoint1.e
 Integration File signal 2: autoint2.e
 Quant Time: Feb 28 22:20:25 2023
 Quant Method : Z:\pestpcbsrv\HPCHEM1\ECD_P\methods\PP021723.M
 Quant Title : GC EXTRACTABLES
 QLast Update : Mon Feb 20 05:24:03 2023
 Response via : Initial Calibration
 Integrator: ChemStation

Volume Inj. : 2 µl
 Signal #1 Phase : ZB-MR1 Signal #2 Phase: ZB-MR2
 Signal #1 Info : 30Mx0.32mmx 0.50µ Signal #2 Info : 30M x 0.32mm x 0.25µm

	Compound	RT#1	RT#2	Resp#1	Resp#2	ng/ml	ng/ml
42)	L9 AR-1268-2	8.667	0.000	99917	0	0.375	N.D. #
43)	L9 AR-1268-3	8.892	0.000	75287	0	0.320	N.D. #
44)	L9 AR-1268-4	9.318	0.000	2701	0	0.027	N.D. #
45)	L9 AR-1268-5	9.731	8.329	-32839	168643	N.D.	0.418 #

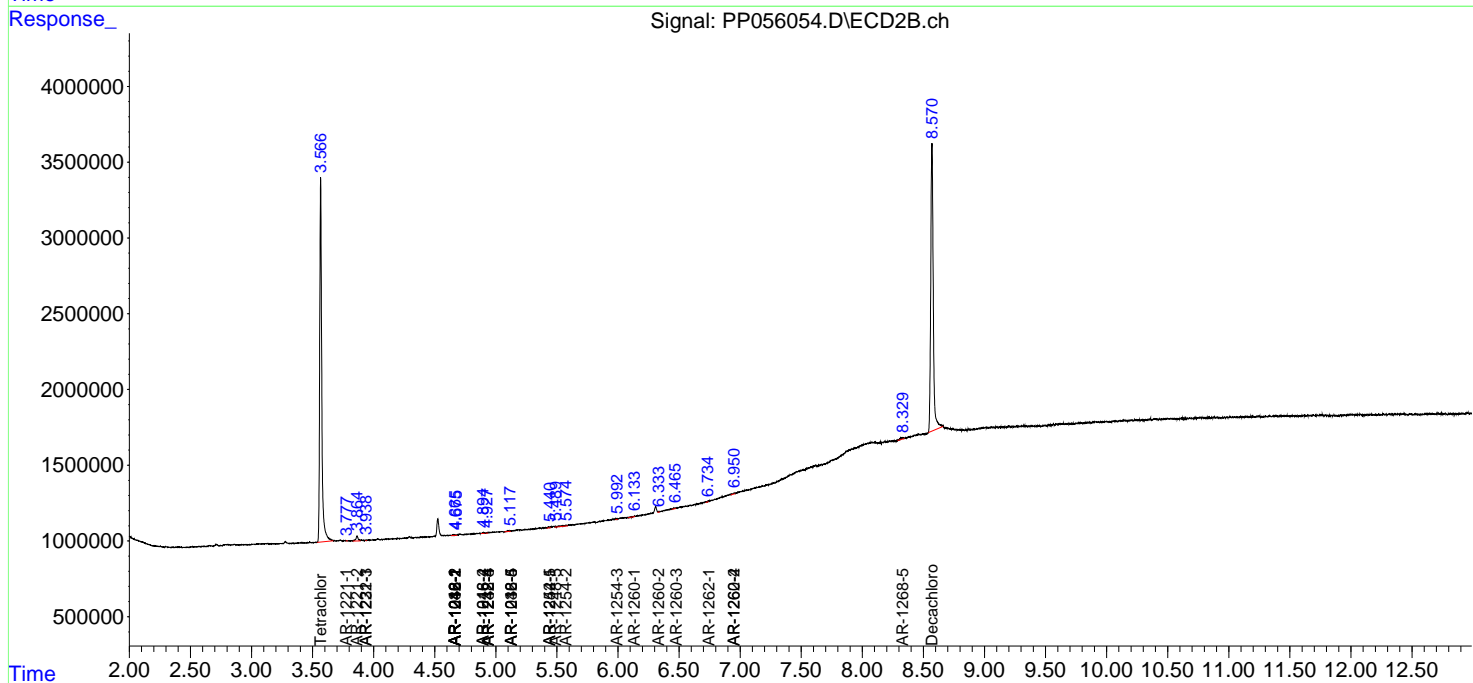
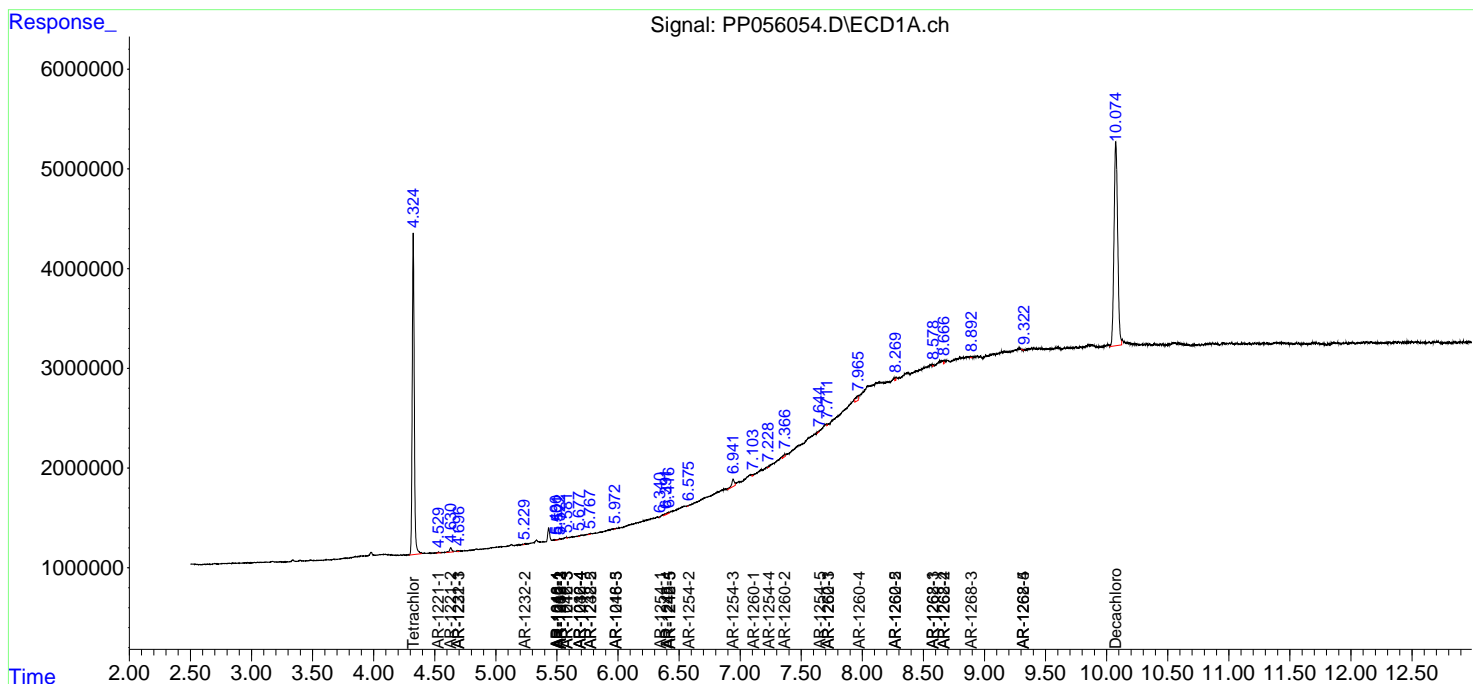
(f)=RT Delta > 1/2 Window (#)=Amounts differ by > 25% (m)=manual int.

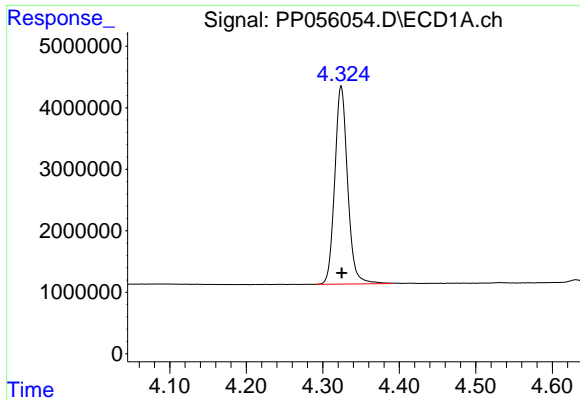
Data Path : Z:\pestpcbsrv\HPCHEM1\ECD_P\Data\PP022823\
 Data File : PP056054.D
 Signal(s) : Signal #1: ECD1A.ch Signal #2: ECD2B.ch
 Acq On : 28 Feb 2023 13:42
 Operator : YP\AJ
 Sample : PB151102BL
 Misc :
 ALS Vial : 10 Sample Multiplier: 1

Instrument :
 ECD_P
 ClientSampleId :

Integration File signal 1: autoint1.e
 Integration File signal 2: autoint2.e
 Quant Time: Feb 28 22:20:25 2023
 Quant Method : Z:\pestpcbsrv\HPCHEM1\ECD_P\methods\PP021723.M
 Quant Title : GC EXTRACTABLES
 QLast Update : Mon Feb 20 05:24:03 2023
 Response via : Initial Calibration
 Integrator: ChemStation

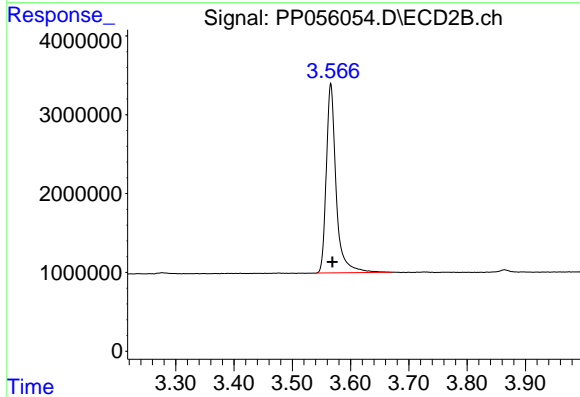
Volume Inj. : 2 µl
 Signal #1 Phase : ZB-MR1 Signal #2 Phase: ZB-MR2
 Signal #1 Info : 30Mx0.32mmx 0.50µ Signal #2 Info : 30M x 0.32mm x 0.25µm



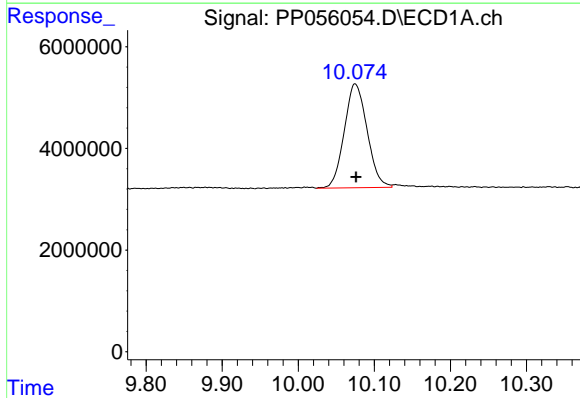


#1 Tetrachloro-m-xylene
 R.T.: 4.324 min
 Delta R.T.: -0.001 min
 Response: 37540095
 Conc: 23.30 ng/ml

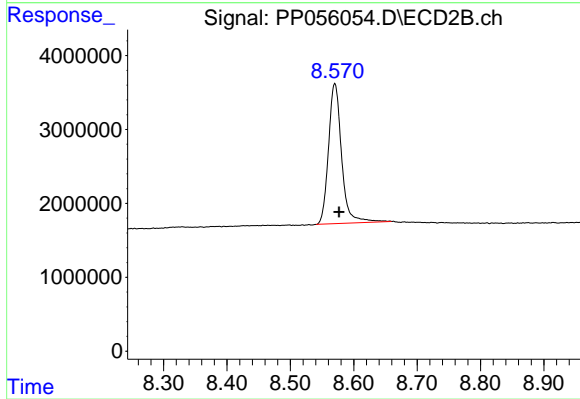
Instrument :
 ECD_P
 ClientSampleId :



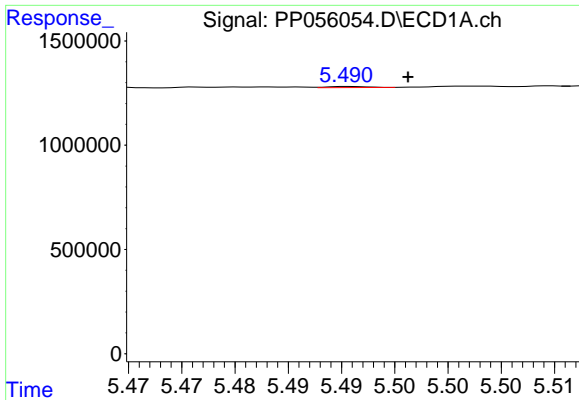
#1 Tetrachloro-m-xylene
 R.T.: 3.566 min
 Delta R.T.: -0.003 min
 Response: 28162160
 Conc: 19.29 ng/ml



#2 Decachlorobiphenyl
 R.T.: 10.075 min
 Delta R.T.: -0.001 min
 Response: 42657980
 Conc: 20.91 ng/ml



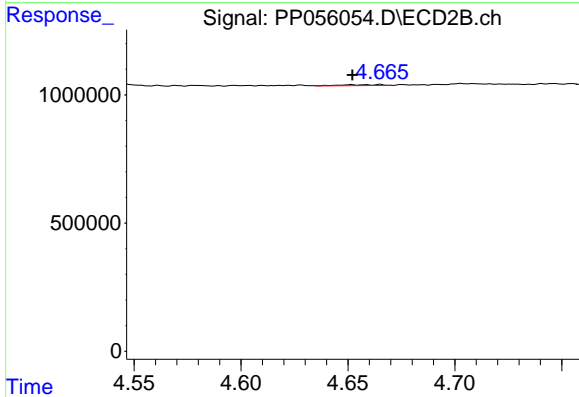
#2 Decachlorobiphenyl
 R.T.: 8.570 min
 Delta R.T.: -0.006 min
 Response: 27233370
 Conc: 24.00 ng/ml



#3 AR-1016-1

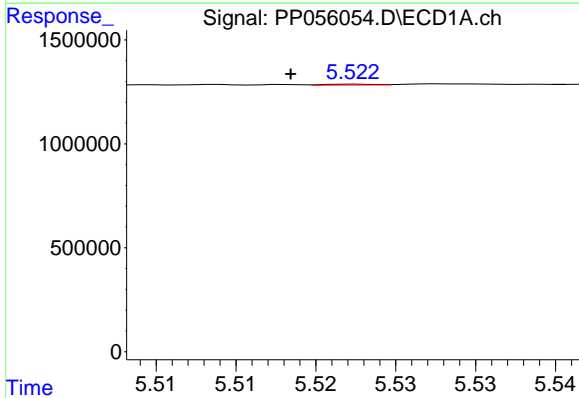
R.T.: 5.491 min
 Delta R.T.: -0.005 min
 Response: 12106
 Conc: 0.20 ng/ml

Instrument :
 ECD_P
 ClientSampleId :



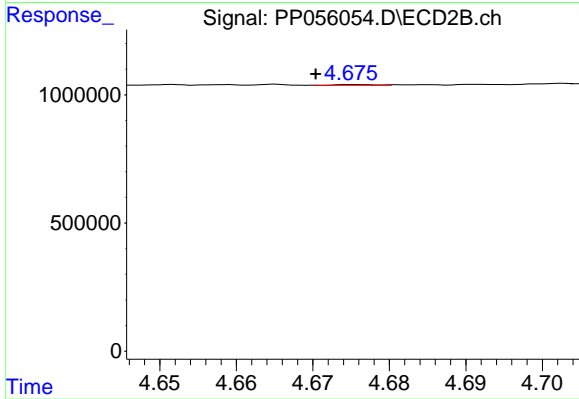
#3 AR-1016-1

R.T.: 4.665 min
 Delta R.T.: 0.013 min
 Response: 49438
 Conc: 1.10 ng/ml



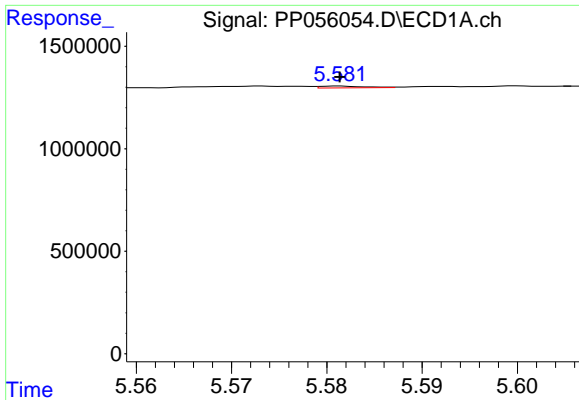
#4 AR-1016-2

R.T.: 5.523 min
 Delta R.T.: 0.004 min
 Response: 8785
 Conc: 0.10 ng/ml



#4 AR-1016-2

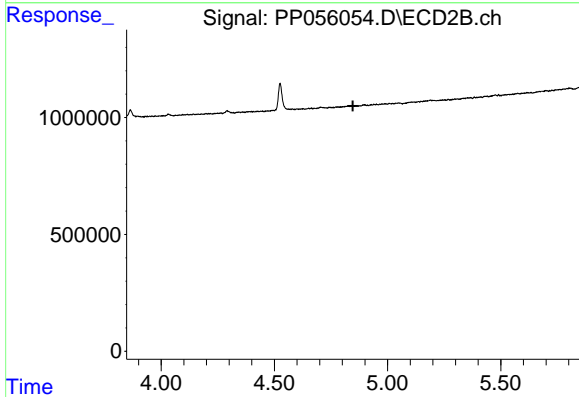
R.T.: 4.676 min
 Delta R.T.: 0.005 min
 Response: 11085
 Conc: 0.17 ng/ml



#5 AR-1016-3

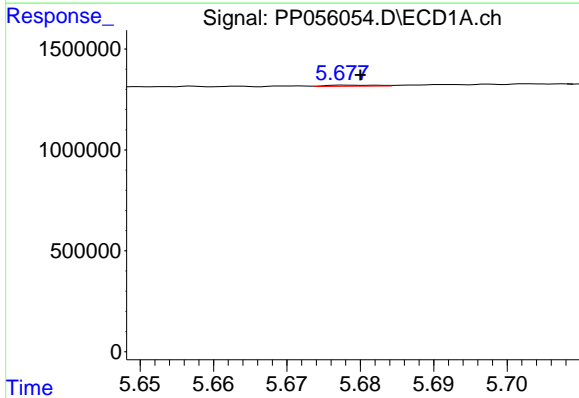
R.T.: 5.581 min
 Delta R.T.: 0.000 min
 Response: 28474
 Conc: 0.51 ng/ml

Instrument :
 ECD_P
 ClientSampleId :



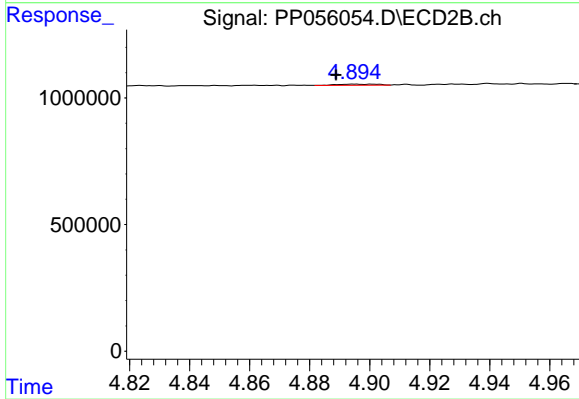
#5 AR-1016-3

R.T.: 0.000 min
 Exp R.T. : 4.847 min
 Response: 0
 Conc: N.D.



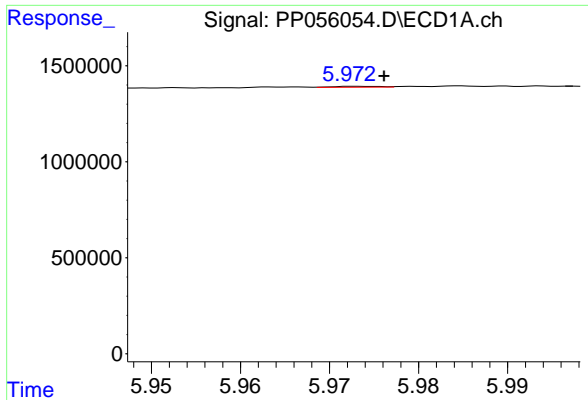
#6 AR-1016-4

R.T.: 5.678 min
 Delta R.T.: -0.002 min
 Response: 27715
 Conc: 0.62 ng/ml



#6 AR-1016-4

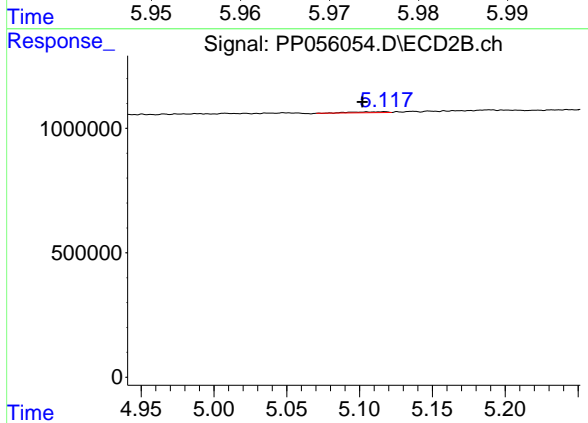
R.T.: 4.895 min
 Delta R.T.: 0.006 min
 Response: 45583
 Conc: 1.53 ng/ml



#7 AR-1016-5

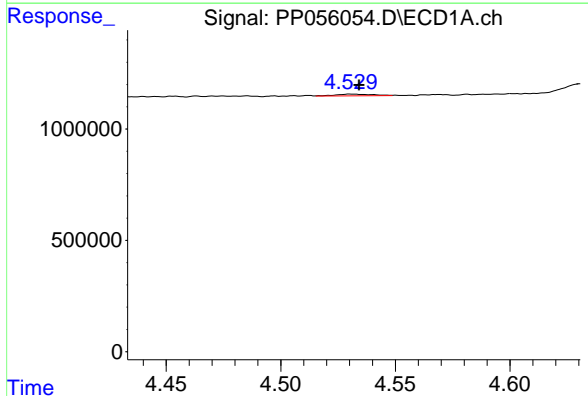
R.T.: 5.973 min
 Delta R.T.: -0.003 min
 Response: 16563
 Conc: 0.34 ng/ml

Instrument :
 ECD_P
 ClientSampleId :



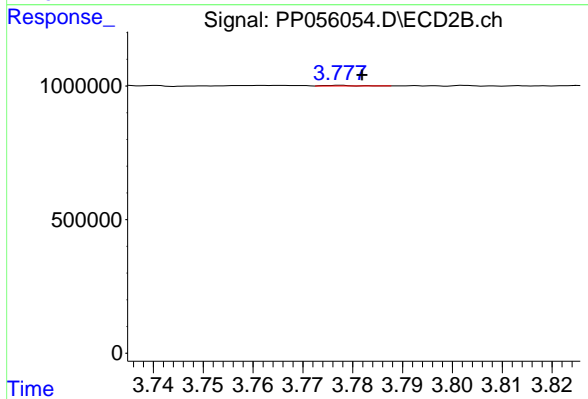
#7 AR-1016-5

R.T.: 5.117 min
 Delta R.T.: 0.015 min
 Response: 61223
 Conc: 1.55 ng/ml



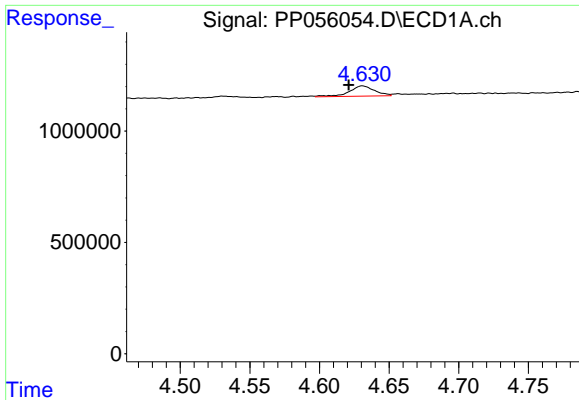
#8 AR-1221-1

R.T.: 4.530 min
 Delta R.T.: -0.004 min
 Response: 86973
 Conc: 4.18 ng/ml



#8 AR-1221-1

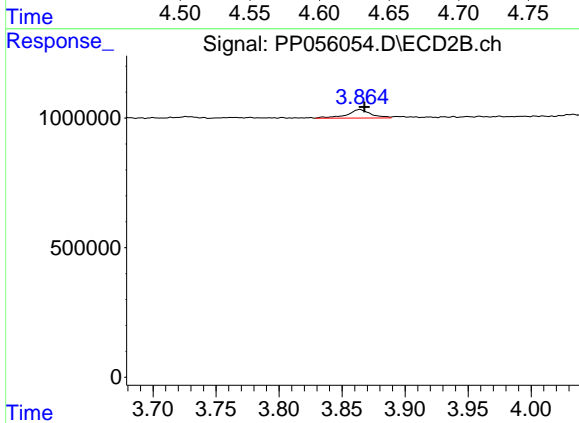
R.T.: 3.777 min
 Delta R.T.: -0.005 min
 Response: 9934
 Conc: 0.55 ng/ml



#9 AR-1221-2

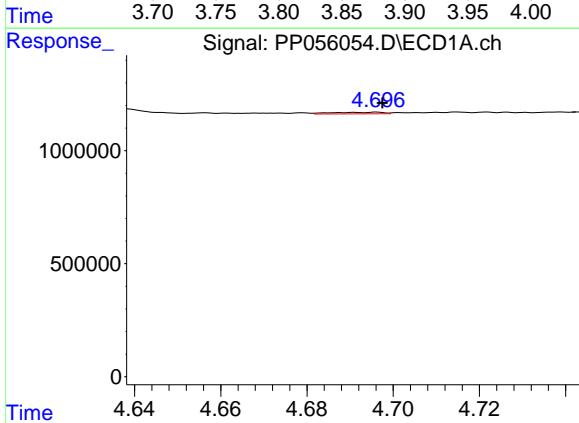
R.T.: 4.631 min
 Delta R.T.: 0.010 min
 Response: 584570
 Conc: 36.75 ng/ml

Instrument :
 ECD_P
 ClientSampleId :



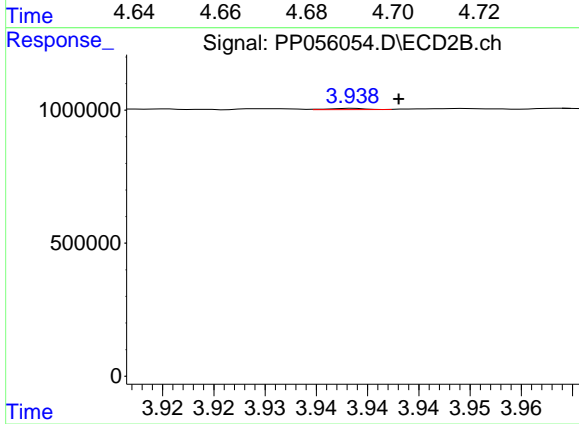
#9 AR-1221-2

R.T.: 3.864 min
 Delta R.T.: -0.004 min
 Response: 430137
 Conc: 32.75 ng/ml



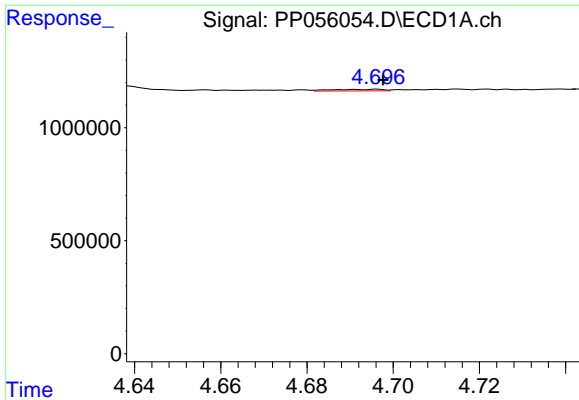
#10 AR-1221-3

R.T.: 4.696 min
 Delta R.T.: -0.001 min
 Response: 60370
 Conc: 1.24 ng/ml



#10 AR-1221-3

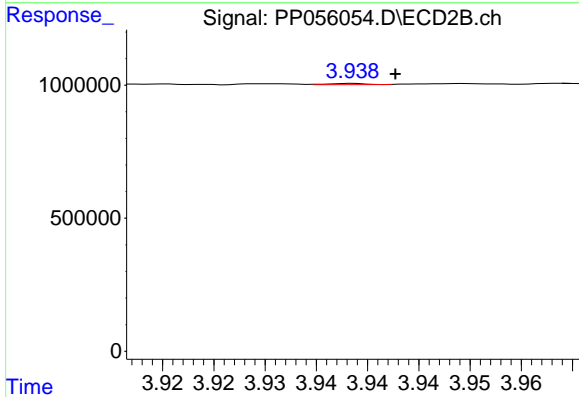
R.T.: 3.938 min
 Delta R.T.: -0.005 min
 Response: 11243
 Conc: 0.27 ng/ml



#11 AR-1232-1

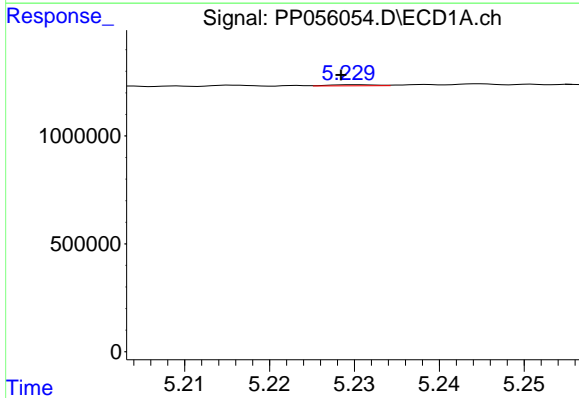
R.T.: 4.696 min
 Delta R.T.: -0.001 min
 Response: 60370
 Conc: 1.52 ng/ml

Instrument :
 ECD_P
 ClientSampleId :



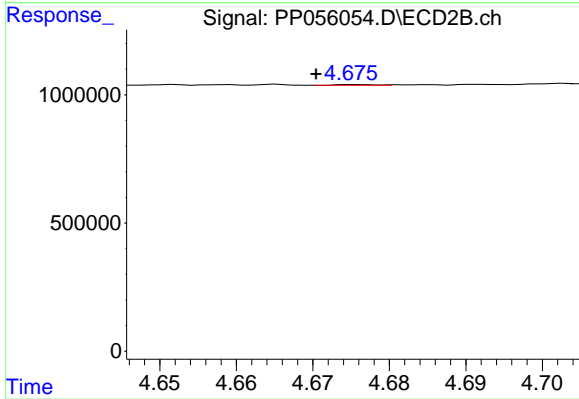
#11 AR-1232-1

R.T.: 3.938 min
 Delta R.T.: -0.004 min
 Response: 11243
 Conc: 0.33 ng/ml



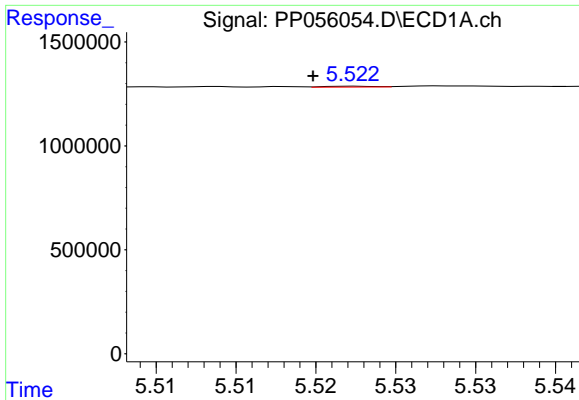
#12 AR-1232-2

R.T.: 5.230 min
 Delta R.T.: 0.002 min
 Response: 21408
 Conc: 1.03 ng/ml



#12 AR-1232-2

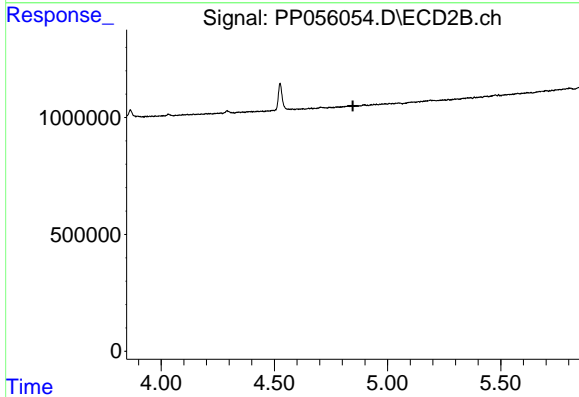
R.T.: 4.676 min
 Delta R.T.: 0.005 min
 Response: 11085
 Conc: 0.38 ng/ml



#13 AR-1232-3

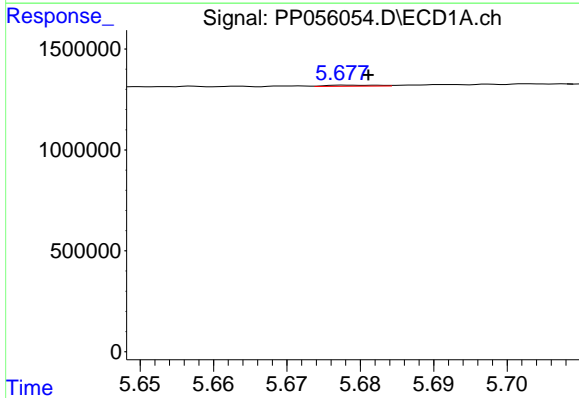
R.T.: 5.523 min
 Delta R.T.: 0.003 min
 Response: 8785
 Conc: 0.22 ng/ml

Instrument :
 ECD_P
 ClientSampleId :



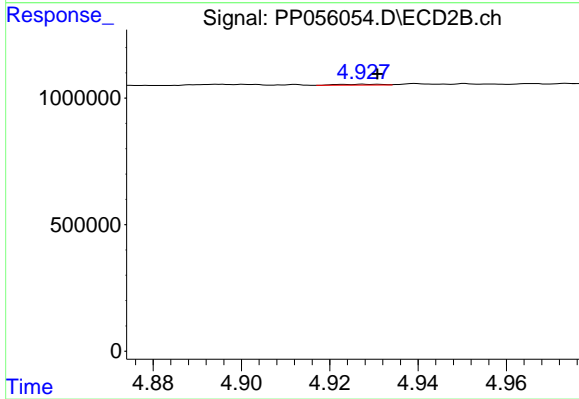
#13 AR-1232-3

R.T.: 0.000 min
 Exp R.T. : 4.847 min
 Response: 0
 Conc: N.D.



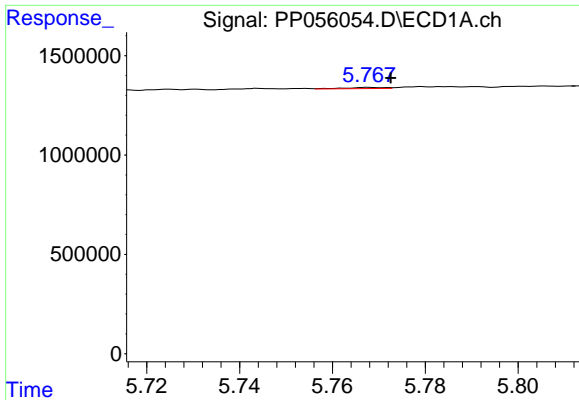
#14 AR-1232-4

R.T.: 5.678 min
 Delta R.T.: -0.003 min
 Response: 27715
 Conc: 1.41 ng/ml



#14 AR-1232-4

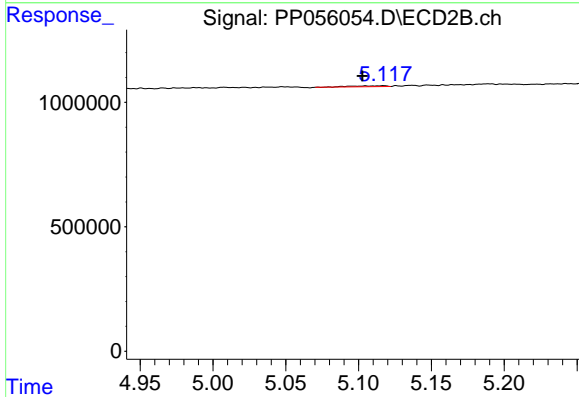
R.T.: 4.929 min
 Delta R.T.: -0.002 min
 Response: 23648
 Conc: 1.56 ng/ml



#15 AR-1232-5

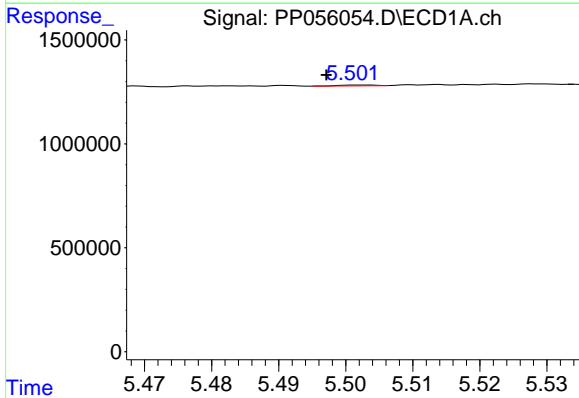
R.T.: 5.768 min
 Delta R.T.: -0.005 min
 Response: 35150
 Conc: 2.20 ng/ml

Instrument :
 ECD_P
 ClientSampleId :



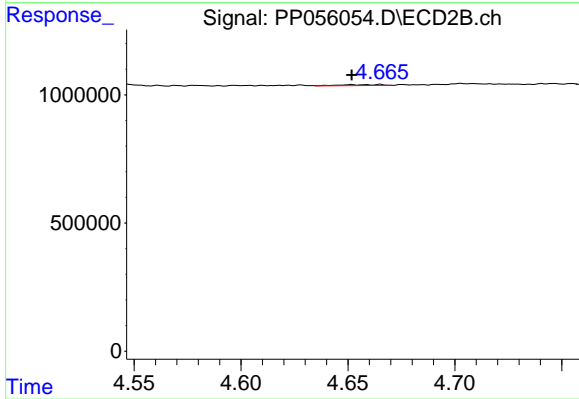
#15 AR-1232-5

R.T.: 5.117 min
 Delta R.T.: 0.015 min
 Response: 61223
 Conc: 3.74 ng/ml



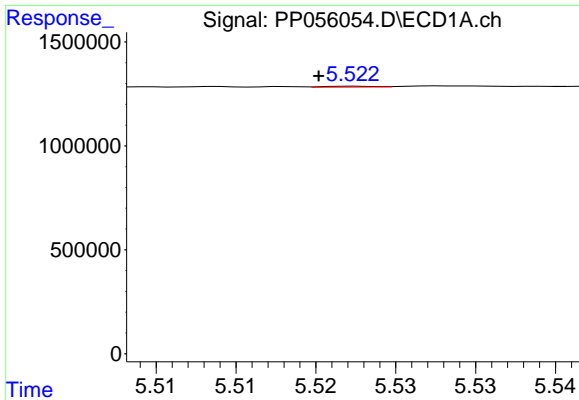
#16 AR-1242-1

R.T.: 5.502 min
 Delta R.T.: 0.005 min
 Response: 17489
 Conc: 0.36 ng/ml



#16 AR-1242-1

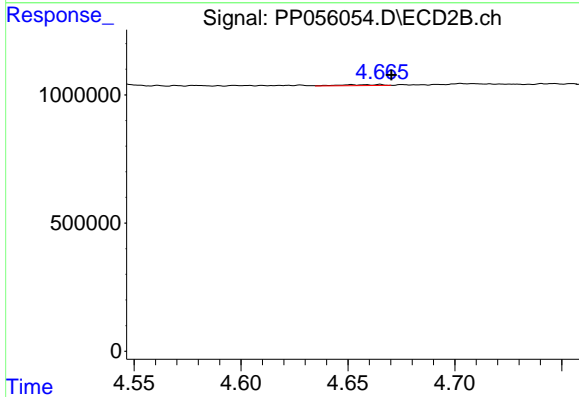
R.T.: 4.665 min
 Delta R.T.: 0.013 min
 Response: 49438
 Conc: 1.34 ng/ml



#17 AR-1242-2

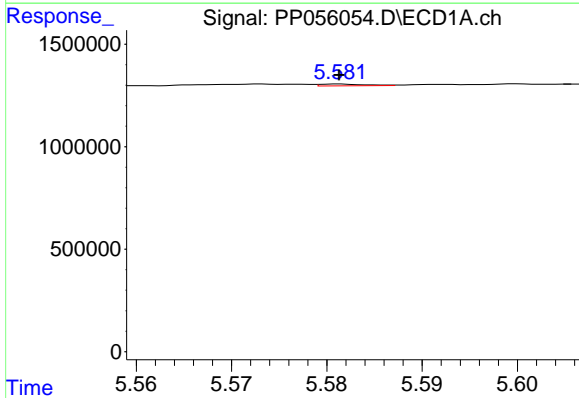
R.T.: 5.523 min
 Delta R.T.: 0.002 min
 Response: 8785
 Conc: 0.12 ng/ml

Instrument :
 ECD_P
 ClientSampleId :



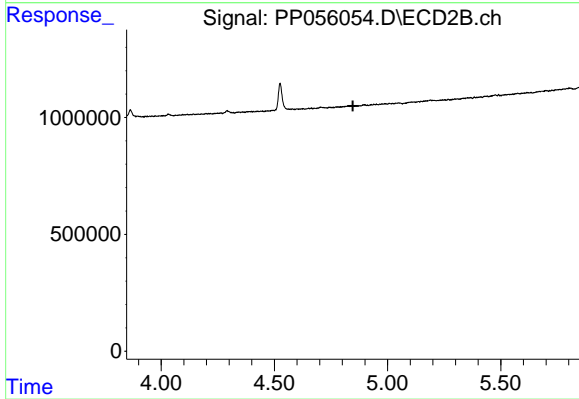
#17 AR-1242-2

R.T.: 4.665 min
 Delta R.T.: -0.005 min
 Response: 49438
 Conc: 0.94 ng/ml



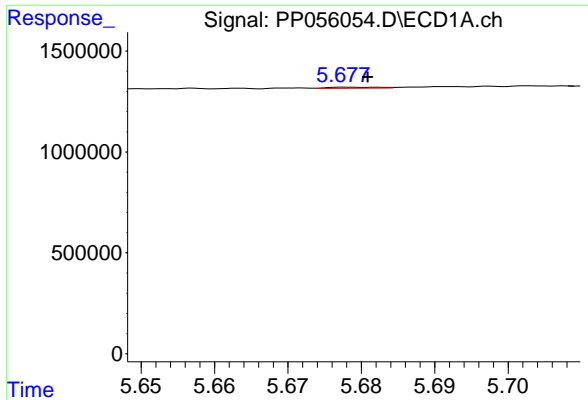
#18 AR-1242-3

R.T.: 5.581 min
 Delta R.T.: 0.000 min
 Response: 28474
 Conc: 0.64 ng/ml



#18 AR-1242-3

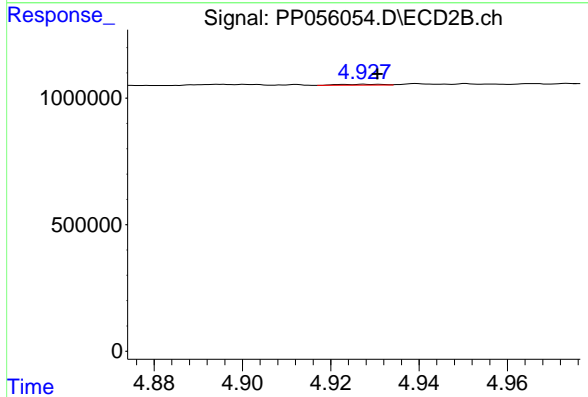
R.T.: 0.000 min
 Exp R.T. : 4.847 min
 Response: 0
 Conc: N.D.



#19 AR-1242-4

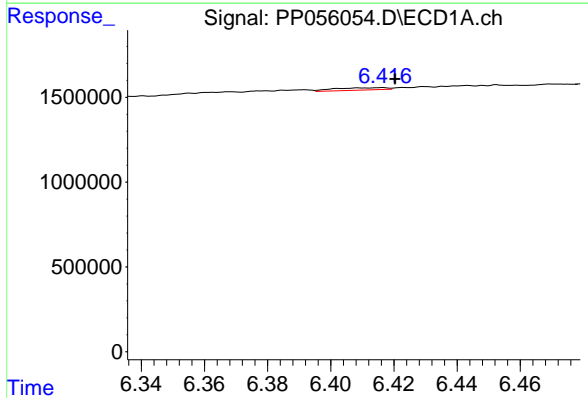
R.T.: 5.678 min
 Delta R.T.: -0.003 min
 Response: 27715
 Conc: 0.77 ng/ml

Instrument :
 ECD_P
 ClientSampleId :



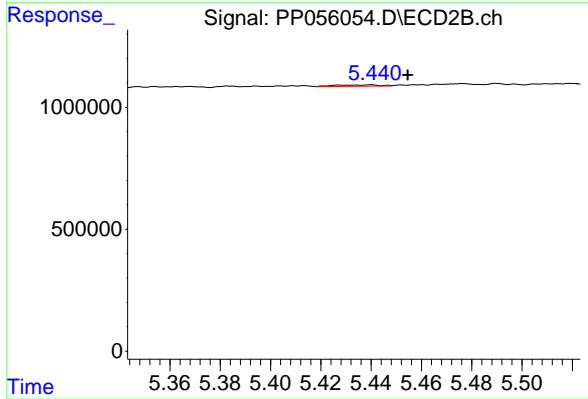
#19 AR-1242-4

R.T.: 4.929 min
 Delta R.T.: -0.002 min
 Response: 23648
 Conc: 0.77 ng/ml



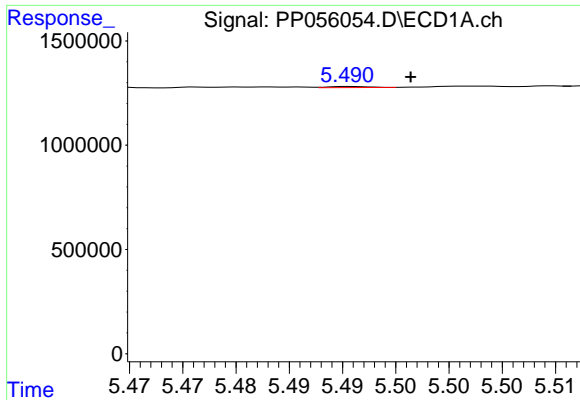
#20 AR-1242-5

R.T.: 6.416 min
 Delta R.T.: -0.004 min
 Response: 158267
 Conc: 3.78 ng/ml



#20 AR-1242-5

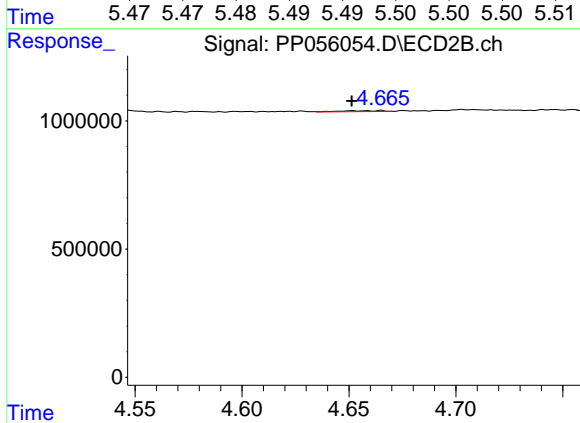
R.T.: 5.440 min
 Delta R.T.: -0.015 min
 Response: 66719
 Conc: 2.00 ng/ml



#21 AR-1248-1

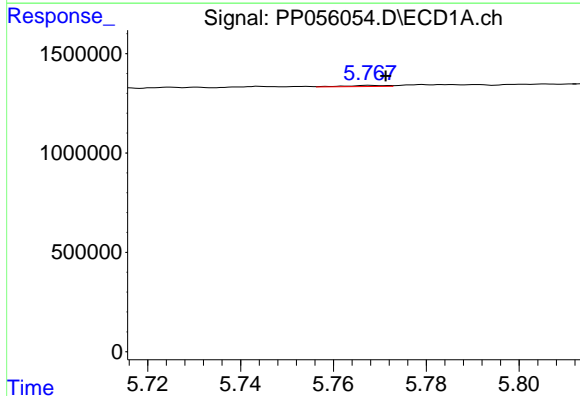
R.T.: 5.491 min
 Delta R.T.: -0.006 min
 Response: 12106
 Conc: 0.33 ng/ml

Instrument :
 ECD_P
 ClientSampleId :



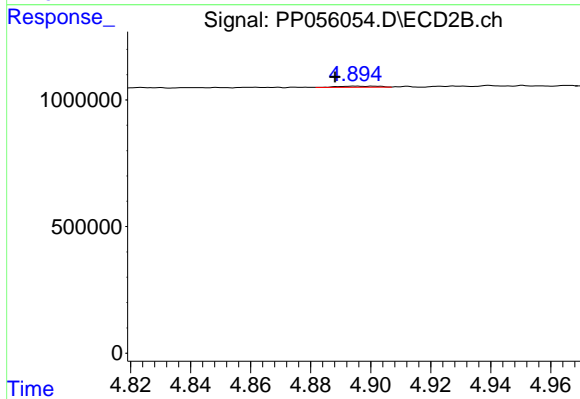
#21 AR-1248-1

R.T.: 4.665 min
 Delta R.T.: 0.014 min
 Response: 49438
 Conc: 1.77 ng/ml



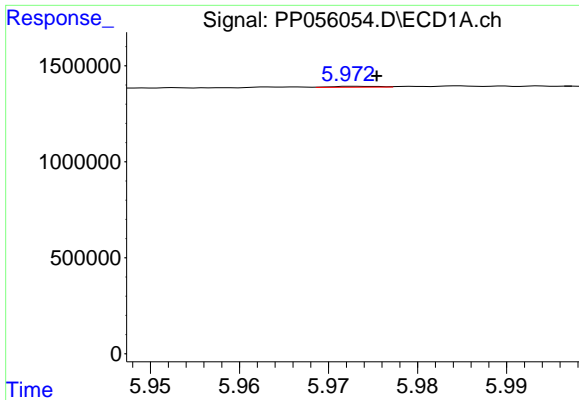
#22 AR-1248-2

R.T.: 5.768 min
 Delta R.T.: -0.003 min
 Response: 35150
 Conc: 0.61 ng/ml



#22 AR-1248-2

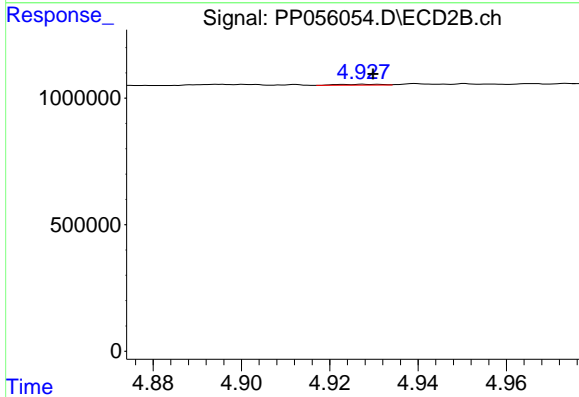
R.T.: 4.895 min
 Delta R.T.: 0.007 min
 Response: 45583
 Conc: 1.07 ng/ml



#23 AR-1248-3

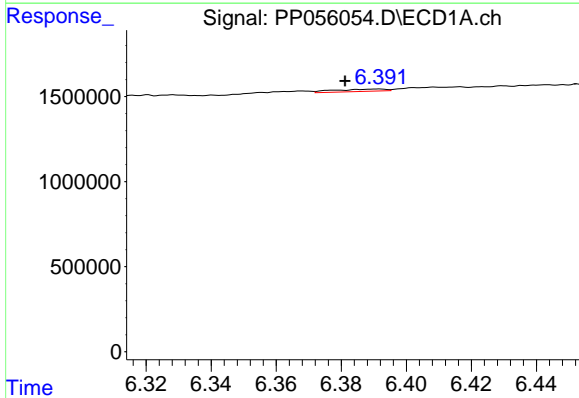
R.T.: 5.973 min
 Delta R.T.: -0.002 min
 Response: 16563
 Conc: 0.25 ng/ml

Instrument :
 ECD_P
 ClientSampleId :



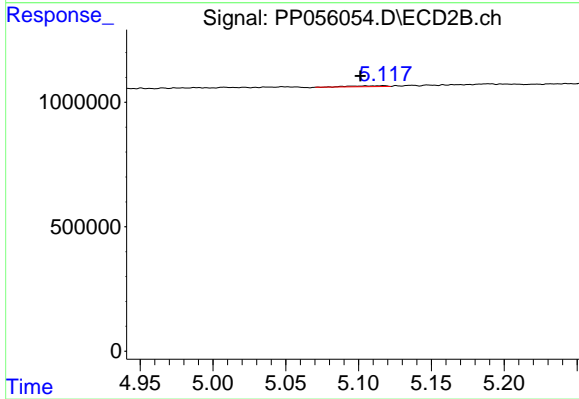
#23 AR-1248-3

R.T.: 4.929 min
 Delta R.T.: -0.001 min
 Response: 23648
 Conc: 0.53 ng/ml



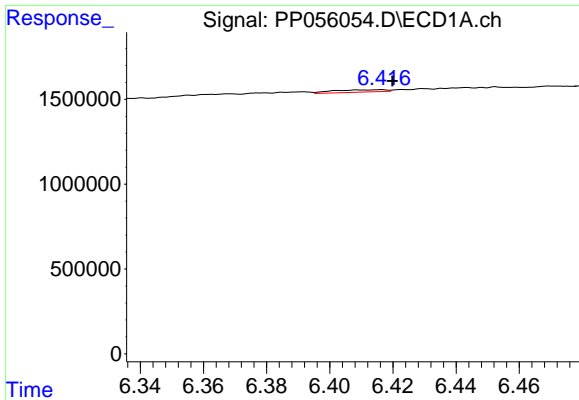
#24 AR-1248-4

R.T.: 6.392 min
 Delta R.T.: 0.010 min
 Response: 150400
 Conc: 2.07 ng/ml



#24 AR-1248-4

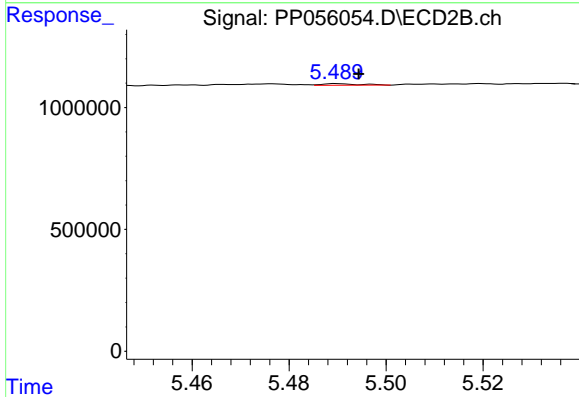
R.T.: 5.117 min
 Delta R.T.: 0.016 min
 Response: 61223
 Conc: 1.20 ng/ml



#25 AR-1248-5

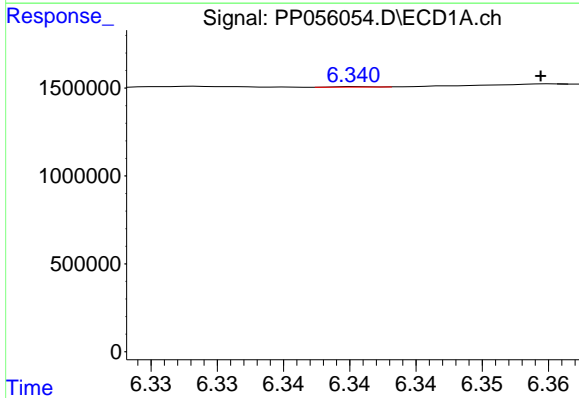
R.T.: 6.416 min
 Delta R.T.: -0.003 min
 Response: 158267
 Conc: 2.23 ng/ml

Instrument :
 ECD_P
 ClientSampleId :



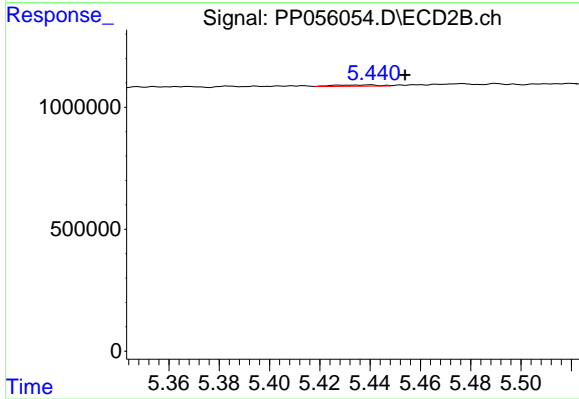
#25 AR-1248-5

R.T.: 5.490 min
 Delta R.T.: -0.004 min
 Response: 34486
 Conc: 0.78 ng/ml



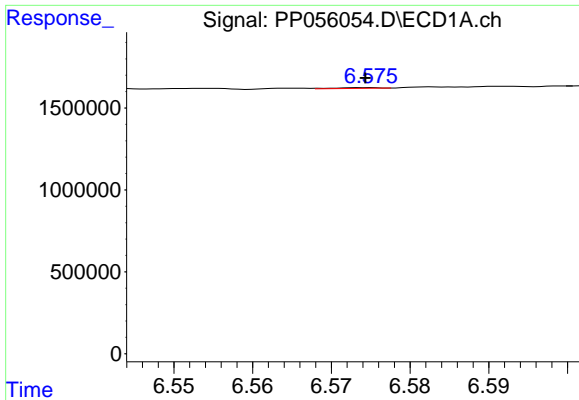
#26 AR-1254-1

R.T.: 6.341 min
 Delta R.T.: -0.014 min
 Response: 4318
 Conc: 0.06 ng/ml



#26 AR-1254-1

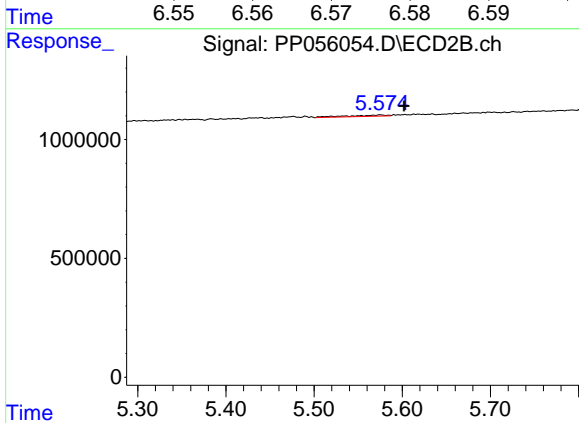
R.T.: 5.440 min
 Delta R.T.: -0.014 min
 Response: 66719
 Conc: 0.91 ng/ml



#27 AR-1254-2

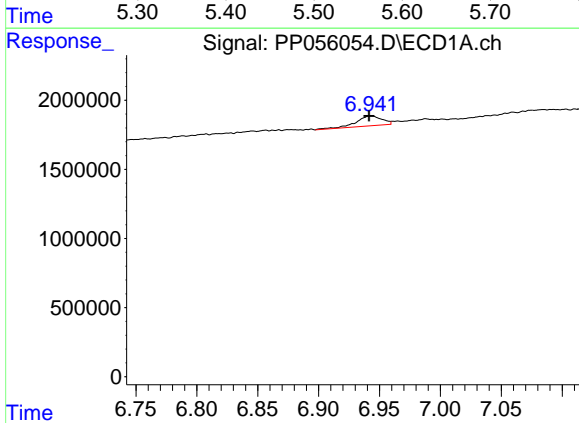
R.T.: 6.575 min
 Delta R.T.: 0.000 min
 Response: 16514
 Conc: 0.14 ng/ml

Instrument :
 ECD_P
 ClientSampleId :



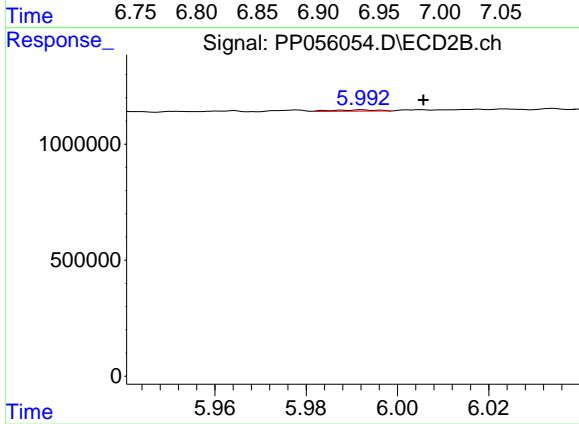
#27 AR-1254-2

R.T.: 5.575 min
 Delta R.T.: -0.027 min
 Response: 161992
 Conc: 2.57 ng/ml



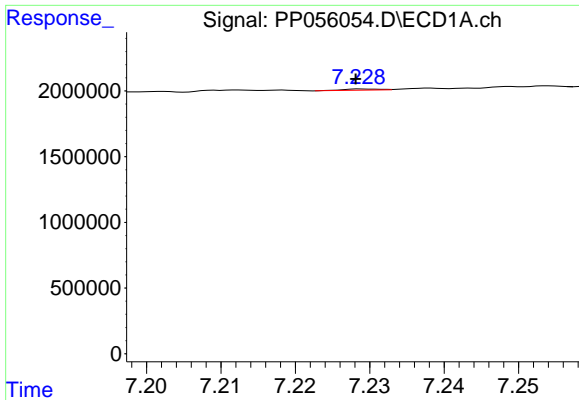
#28 AR-1254-3

R.T.: 6.942 min
 Delta R.T.: 0.000 min
 Response: 1063320
 Conc: 8.64 ng/ml



#28 AR-1254-3

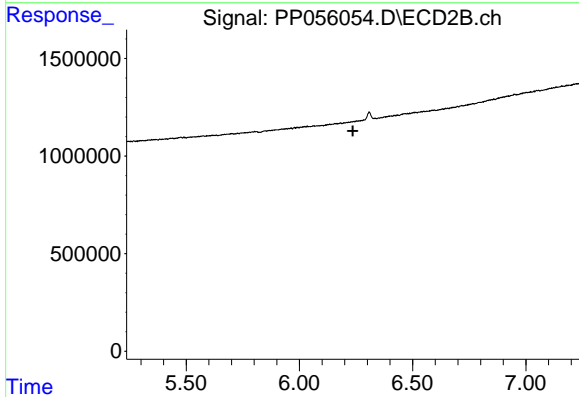
R.T.: 5.992 min
 Delta R.T.: -0.013 min
 Response: 37147
 Conc: 0.38 ng/ml



#29 AR-1254-4

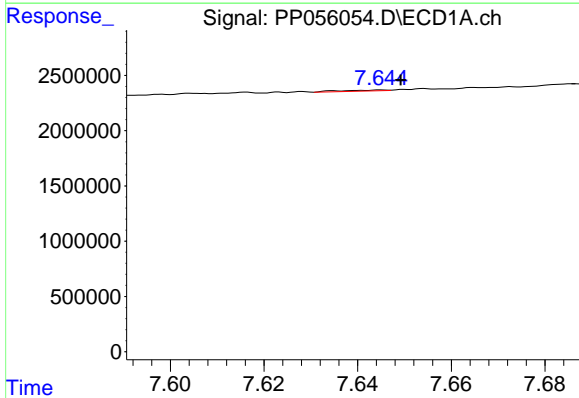
R.T.: 7.229 min
 Delta R.T.: 0.000 min
 Response: 30510
 Conc: 0.33 ng/ml

Instrument :
 ECD_P
 ClientSampleId :



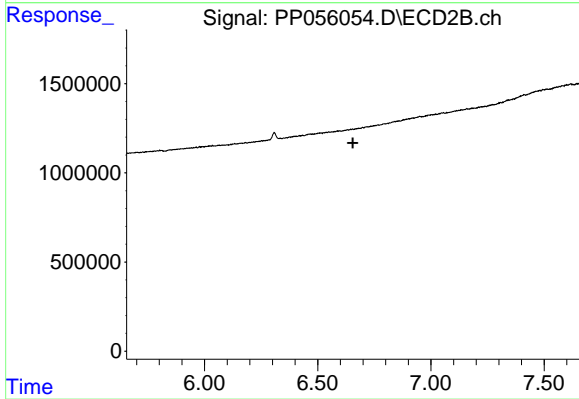
#29 AR-1254-4

R.T.: 0.000 min
 Exp R.T. : 6.236 min
 Response: 0
 Conc: N.D.



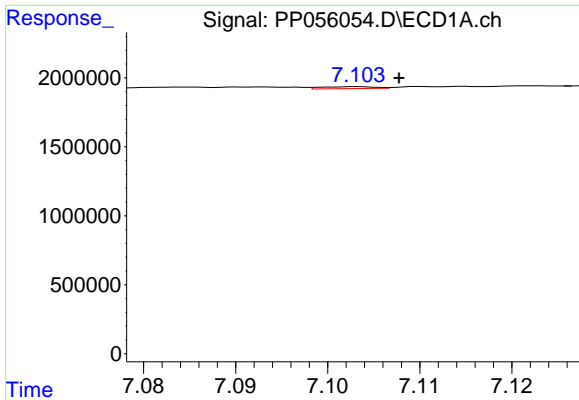
#30 AR-1254-5

R.T.: 7.645 min
 Delta R.T.: -0.004 min
 Response: 56325
 Conc: 0.54 ng/ml



#30 AR-1254-5

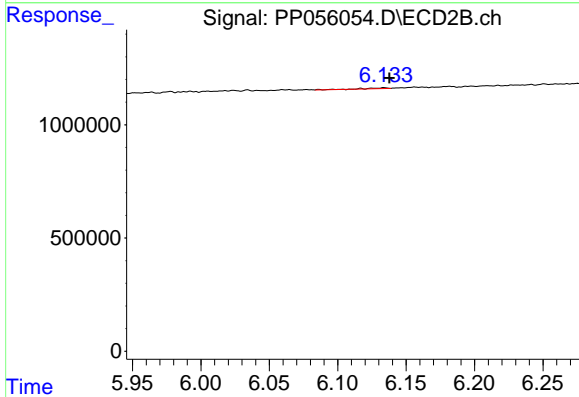
R.T.: 0.000 min
 Exp R.T. : 6.655 min
 Response: 0
 Conc: N.D.



#31 AR-1260-1

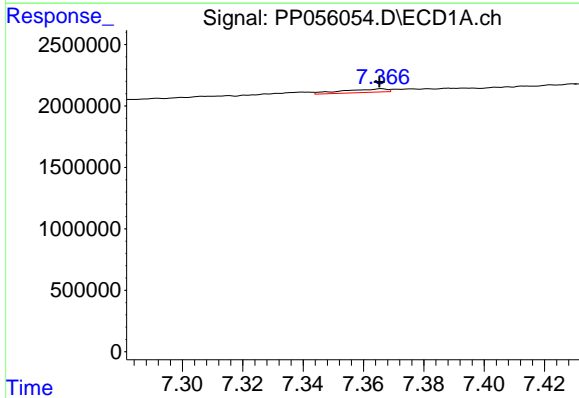
R.T.: 7.103 min
 Delta R.T.: -0.004 min
 Response: 59638
 Conc: 0.58 ng/ml

Instrument :
 ECD_P
 ClientSampleId :



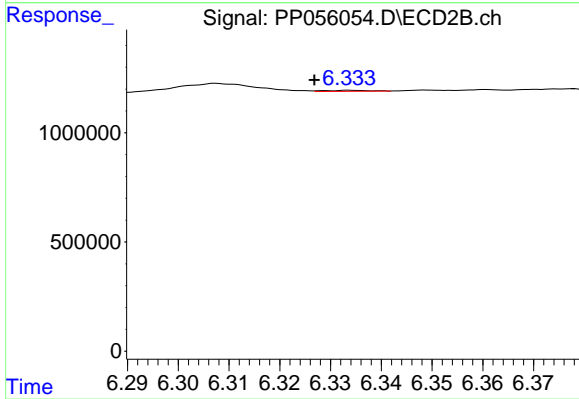
#31 AR-1260-1

R.T.: 6.134 min
 Delta R.T.: -0.004 min
 Response: 46164
 Conc: 0.63 ng/ml



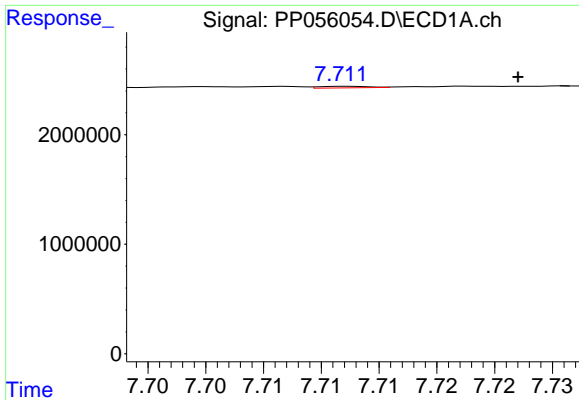
#32 AR-1260-2

R.T.: 7.366 min
 Delta R.T.: 0.000 min
 Response: 283562
 Conc: 2.25 ng/ml



#32 AR-1260-2

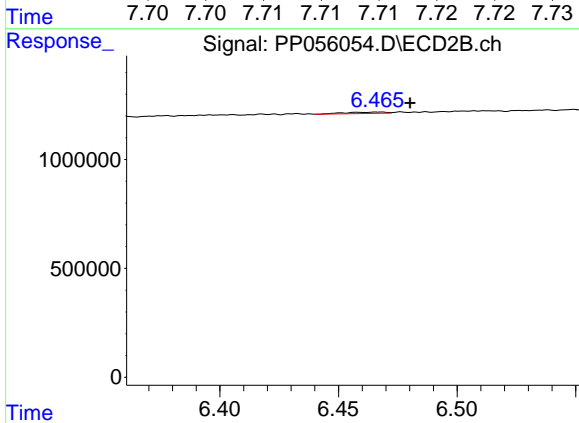
R.T.: 6.334 min
 Delta R.T.: 0.007 min
 Response: 25974
 Conc: 0.32 ng/ml



#33 AR-1260-3

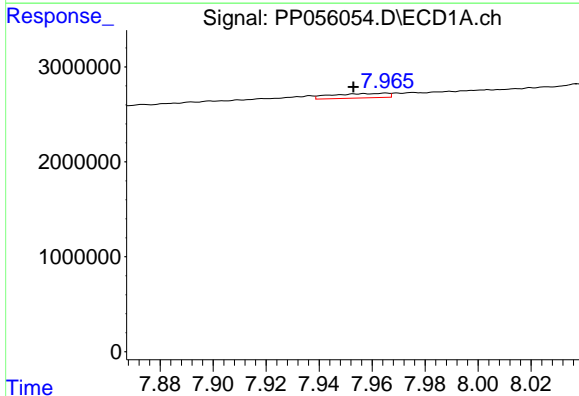
R.T.: 7.712 min
 Delta R.T.: -0.015 min
 Response: 44672
 Conc: 0.51 ng/ml

Instrument :
 ECD_P
 ClientSampleId :



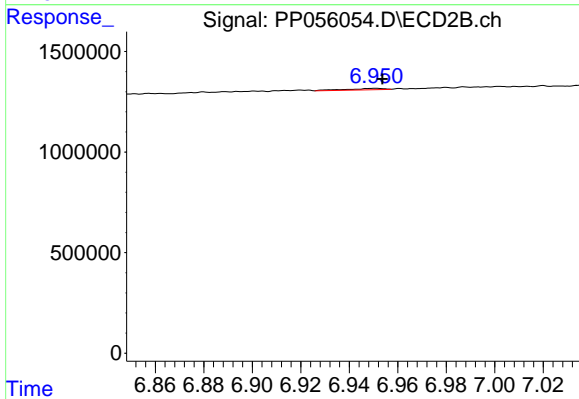
#33 AR-1260-3

R.T.: 6.467 min
 Delta R.T.: -0.013 min
 Response: 73213
 Conc: 0.87 ng/ml



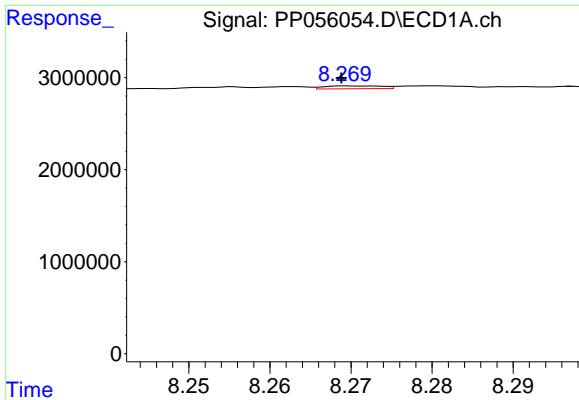
#34 AR-1260-4

R.T.: 7.965 min
 Delta R.T.: 0.012 min
 Response: 687481
 Conc: 6.40 ng/ml



#34 AR-1260-4

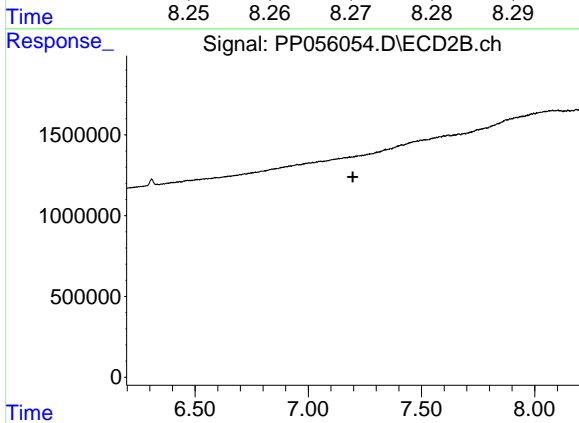
R.T.: 6.951 min
 Delta R.T.: -0.003 min
 Response: 75252
 Conc: 1.18 ng/ml



#35 AR-1260-5

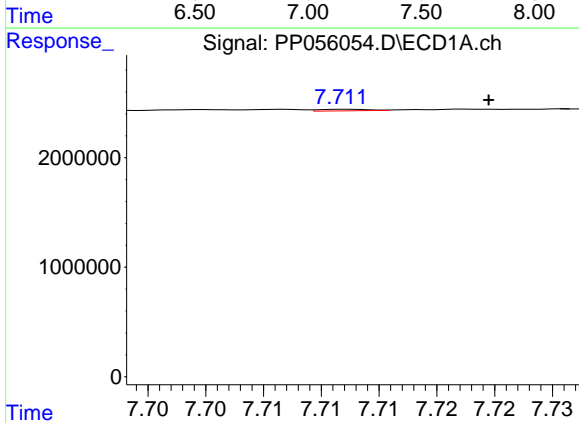
R.T.: 8.269 min
 Delta R.T.: 0.000 min
 Response: 152290
 Conc: 0.74 ng/ml

Instrument :
 ECD_P
 ClientSampleId :



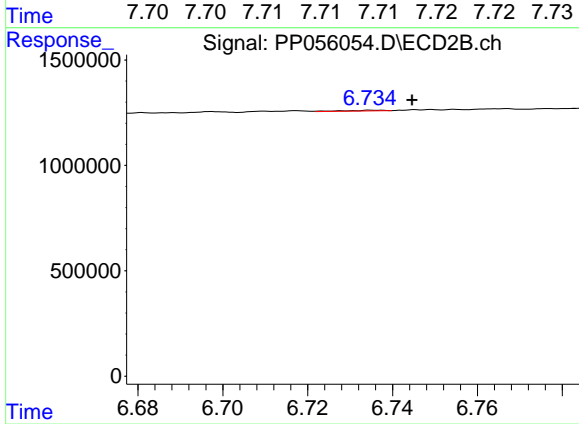
#35 AR-1260-5

R.T.: 0.000 min
 Exp R.T. : 7.197 min
 Response: 0
 Conc: N.D.



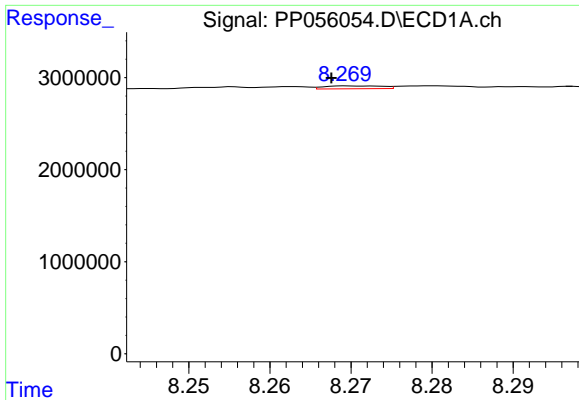
#36 AR-1262-1

R.T.: 7.712 min
 Delta R.T.: -0.012 min
 Response: 44672
 Conc: 0.38 ng/ml



#36 AR-1262-1

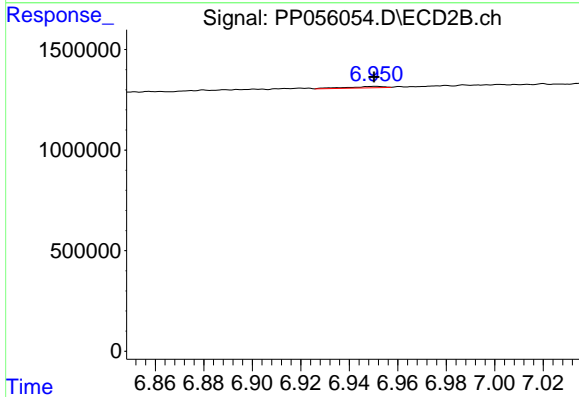
R.T.: 6.736 min
 Delta R.T.: -0.009 min
 Response: 23564
 Conc: 0.67 ng/ml



#37 AR-1262-2

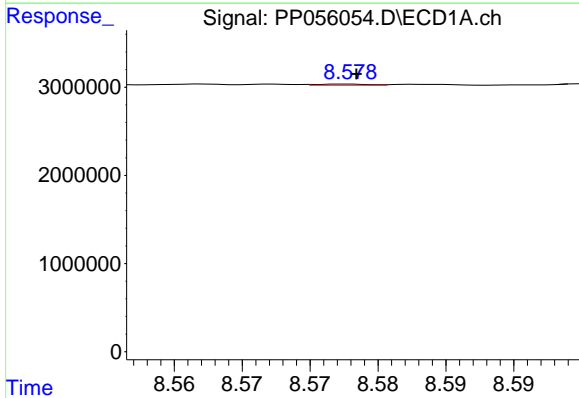
R.T.: 8.269 min
 Delta R.T.: 0.002 min
 Response: 152290
 Conc: 0.69 ng/ml

Instrument :
 ECD_P
 ClientSampleId :



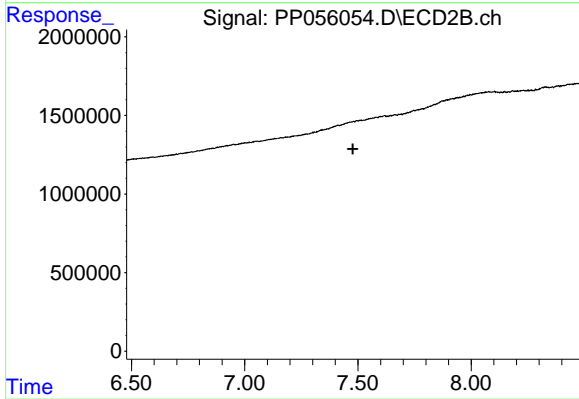
#37 AR-1262-2

R.T.: 6.951 min
 Delta R.T.: 0.000 min
 Response: 75252
 Conc: 1.01 ng/ml



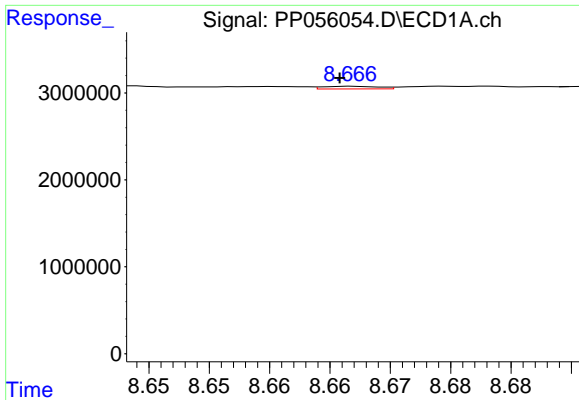
#38 AR-1262-3

R.T.: 8.578 min
 Delta R.T.: 0.000 min
 Response: 34543
 Conc: 0.23 ng/ml



#38 AR-1262-3

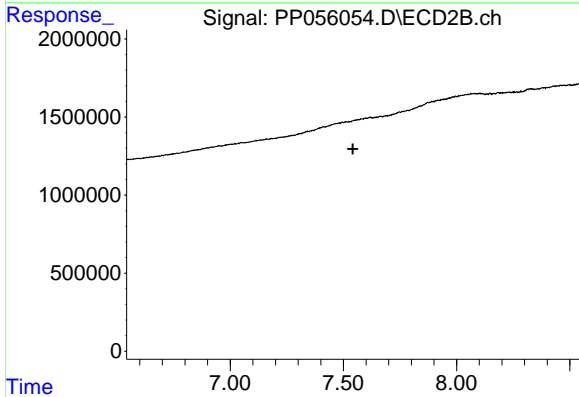
R.T.: 0.000 min
 Exp R.T. : 7.478 min
 Response: 0
 Conc: N.D.



#39 AR-1262-4

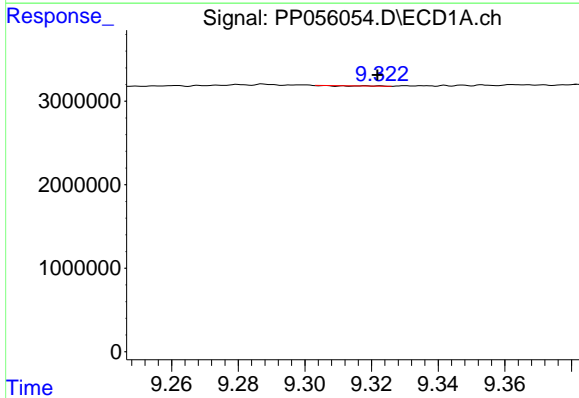
R.T.: 8.667 min
 Delta R.T.: 0.001 min
 Response: 99917
 Conc: 1.33 ng/ml

Instrument :
 ECD_P
 ClientSampleId :



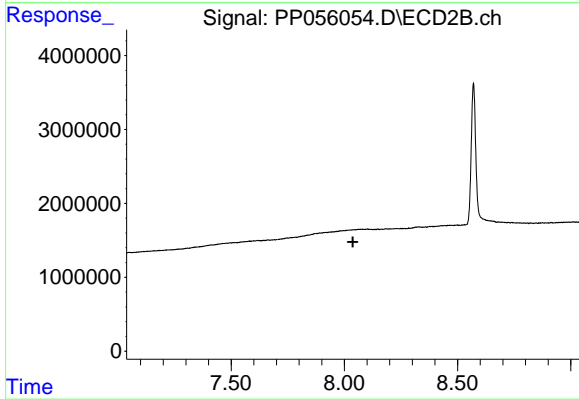
#39 AR-1262-4

R.T.: 0.000 min
 Exp R.T. : 7.542 min
 Response: 0
 Conc: N.D.



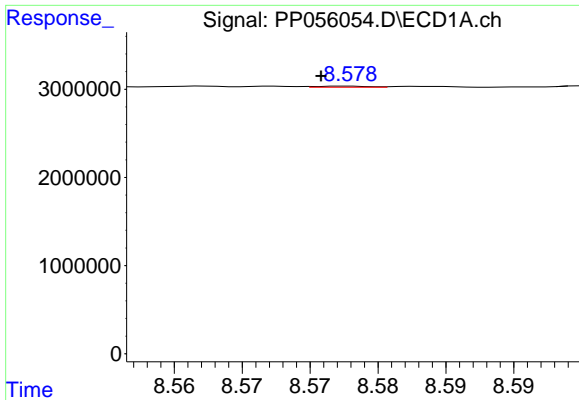
#40 AR-1262-5

R.T.: 9.318 min
 Delta R.T.: -0.004 min
 Response: 2701
 Conc: 0.03 ng/ml



#40 AR-1262-5

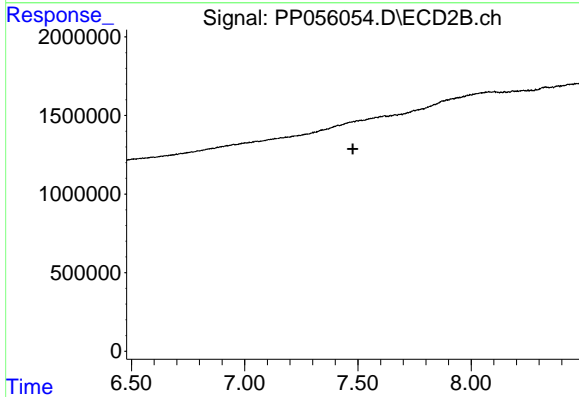
R.T.: 0.000 min
 Exp R.T. : 8.038 min
 Response: 0
 Conc: N.D.



#41 AR-1268-1

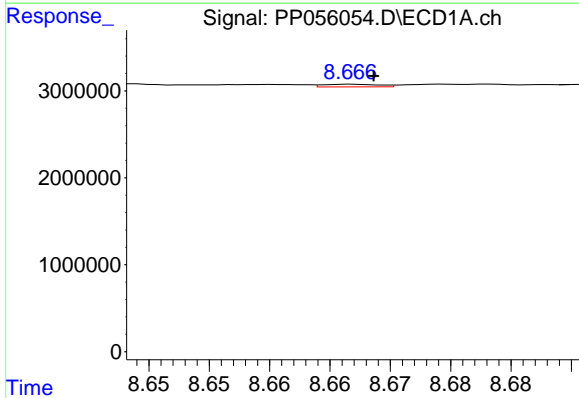
R.T.: 8.578 min
 Delta R.T.: 0.002 min
 Response: 34543
 Conc: 0.12 ng/ml

Instrument :
 ECD_P
 ClientSampleId :



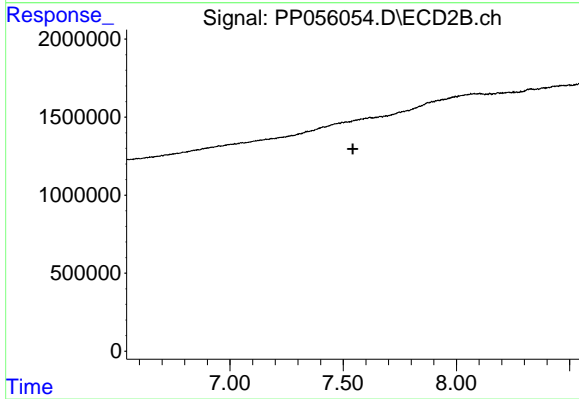
#41 AR-1268-1

R.T.: 0.000 min
 Exp R.T. : 7.478 min
 Response: 0
 Conc: N.D.



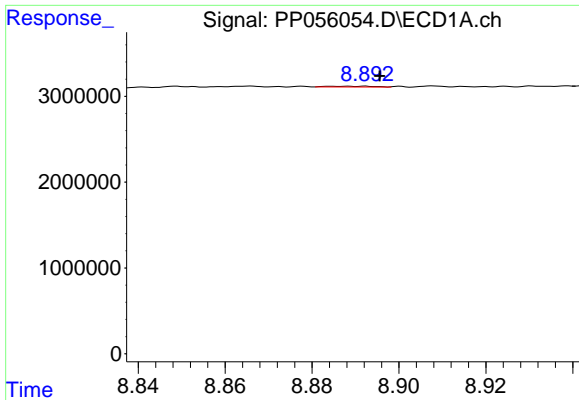
#42 AR-1268-2

R.T.: 8.667 min
 Delta R.T.: -0.002 min
 Response: 99917
 Conc: 0.37 ng/ml



#42 AR-1268-2

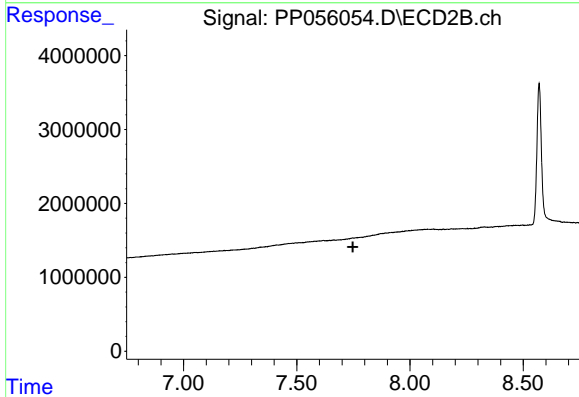
R.T.: 0.000 min
 Exp R.T. : 7.543 min
 Response: 0
 Conc: N.D.



#43 AR-1268-3

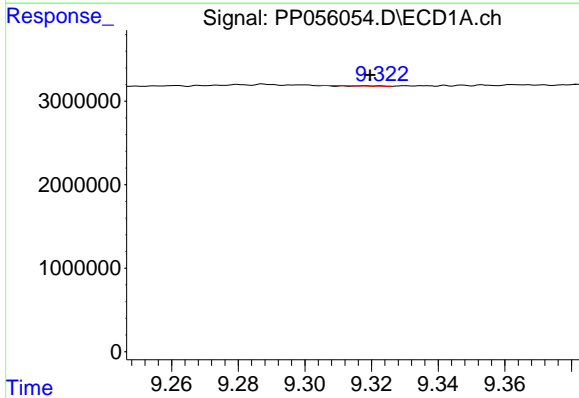
R.T.: 8.892 min
 Delta R.T.: -0.003 min
 Response: 75287
 Conc: 0.32 ng/ml

Instrument :
 ECD_P
 ClientSampleId :



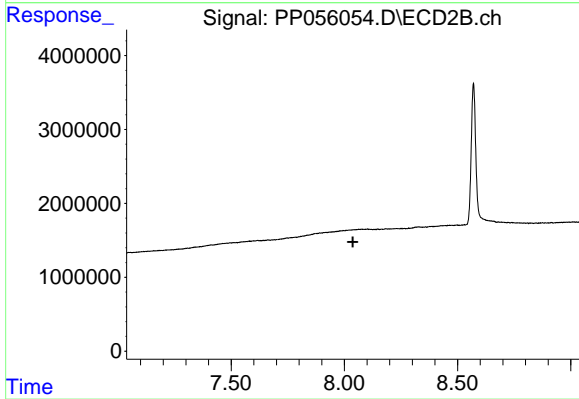
#43 AR-1268-3

R.T.: 0.000 min
 Exp R.T. : 7.748 min
 Response: 0
 Conc: N.D.



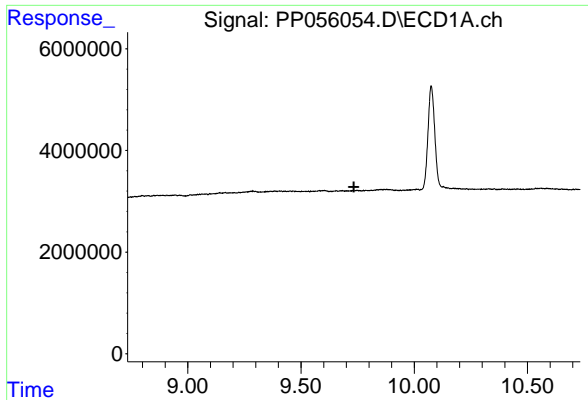
#44 AR-1268-4

R.T.: 9.318 min
 Delta R.T.: -0.001 min
 Response: 2701
 Conc: 0.03 ng/ml



#44 AR-1268-4

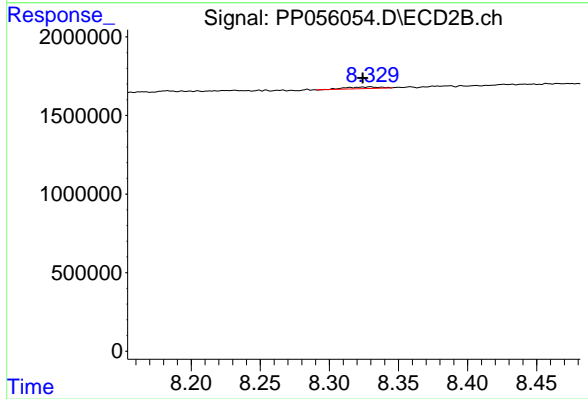
R.T.: 0.000 min
 Exp R.T. : 8.037 min
 Response: 0
 Conc: N.D.



#45 AR-1268-5

R.T.: 9.731 min
Delta R.T.: -0.003 min
Response: -32839
Conc: N.D.

Instrument :
ECD_P
ClientSampleId :



#45 AR-1268-5

R.T.: 8.329 min
Delta R.T.: 0.005 min
Response: 168643
Conc: 0.42 ng/ml