

Data Path : Z:\pestpcbsrv\HPCHEM1\ECD_P\Data\PP022825\
 Data File : PP070147.D
 Signal(s) : Signal #1: ECD1A.ch Signal #2: ECD2B.ch
 Acq On : 28 Feb 2025 18:57
 Operator : YP\AJ
 Sample : Q1465-01
 Misc :
 ALS Vial : 19 Sample Multiplier: 1

Instrument :
 ECD_P
 ClientSampleId :
 ST-OILY-DEBRIS

Integration File signal 1: autoint1.e
 Integration File signal 2: autoint2.e
 Quant Time: Mar 01 00:27:21 2025
 Quant Method : Z:\pestpcbsrv\HPCHEM1\ECD_P\methods\PP022425.M
 Quant Title : GC EXTRACTABLES
 QLast Update : Tue Feb 25 05:10:19 2025
 Response via : Initial Calibration
 Integrator: ChemStation

Volume Inj. : 2 µl
 Signal #1 Phase : ZB-MR1 Signal #2 Phase: ZB-MR2
 Signal #1 Info : 30Mx0.32mmx 0.50µ Signal #2 Info : 30M x 0.32mm x 0.25µm

Compound	RT#1	RT#2	Resp#1	Resp#2	ng/ml	ng/ml
System Monitoring Compounds						
1) SA Tetrachlo...	4.533	3.841	20880970	16766580	14.228	17.538
2) SA Decachlor...	10.256	8.886	19078055	16994263	16.749	15.676
Target Compounds						
3) L1 AR-1016-1	5.720f	4.897	3954192	1936004	79.360	57.967 #
4) L1 AR-1016-2	5.720	4.973	3954192	3862773	55.868	82.902 #
5) L1 AR-1016-3	5.775	5.138	7832583	1408543	178.328	56.269 #
6) L1 AR-1016-4	5.900f	5.174	19151004	1488248	528.138	74.150 #
7) L1 AR-1016-5	6.130	5.359	3569018	4687809	106.415	180.672 #
8) L2 AR-1221-1	4.704	4.037	1375013	614306	72.691	45.771 #
9) L2 AR-1221-2	4.833	4.128	3705556	4641810	253.951	456.594 #
10) L2 AR-1221-3	4.899	4.212	226804	1021147	5.255	33.635 #
11) L3 AR-1232-1	4.899	4.212	226804	1021147	6.897	44.901 #
12) L3 AR-1232-2	5.402	4.973	6245780	3862773	384.114	169.173 #
13) L3 AR-1232-3	5.720	5.138	3954192	1408543	113.407	117.145
14) L3 AR-1232-4	5.900f	5.198	19151004	4429249	1075.932	407.650 #
15) L3 AR-1232-5	5.967	5.359	9279780	4687809	736.071	414.652 #
16) L4 AR-1242-1	5.720	4.973	3954192	3862773	93.138	144.849 #
17) L4 AR-1242-2	5.720	4.973	3954192	3862773	68.718	103.835 #
18) L4 AR-1242-3	5.775	5.138	7832583	1408543	206.526	71.551 #
19) L4 AR-1242-4	5.900f	5.198	19151004	4429249	642.333	225.351 #
20) L4 AR-1242-5	6.590	5.741	8171334	6040362	231.908	242.862
21) L5 AR-1248-1	5.720f	4.973	3954192	3862773	120.886	182.467 #
22) L5 AR-1248-2	5.967	5.174	9279780	1488248	220.149	52.677 #
23) L5 AR-1248-3	6.130	5.198	3569018	4429249	79.009	148.854 #
24) L5 AR-1248-4	6.557	5.359	18106650	4687809	307.083	133.383 #
25) L5 AR-1248-5	6.590	5.775	8171334	3124990	142.890	86.402 #
26) L6 AR-1254-1	6.557	5.741	18106650	6040362	319.339	110.691 #
27) L6 AR-1254-2	6.750	5.864	10685495	3685121	121.862	75.599 #
28) L6 AR-1254-3	7.124	6.296	9484702	5846401	106.419	77.112 #
29) L6 AR-1254-4	7.383	6.527	9484711	3367678	127.293	65.443 #
30) L6 AR-1254-5	7.812	6.929	16942267	5237067	252.259	77.507 #
31) L7 AR-1260-1	7.280	6.417	29851097	3681377	511.499	74.312 #
32) L7 AR-1260-2	7.534	6.605	17406141	7406549	212.984	113.215 #
33) L7 AR-1260-3	7.890	6.757	9550037	4694609	152.165	77.826 #
34) L7 AR-1260-4	8.113	7.227	10405954	5251817	164.129	107.471 #
35) L7 AR-1260-5	8.434	7.469	12932541	17192557	98.583	144.263 #
36) L8 AR-1262-1	8.113	6.967	10405954	6599026	128.900	79.054 #
37) L8 AR-1262-2	8.434	7.227	12932541	5251817	80.283	79.224
38) L8 AR-1262-3	8.771	7.750	29233426	2922063	264.289	48.234 #
39) L8 AR-1262-4	8.836	7.812	3716113	6853184	44.285	64.975 #
40) L8 AR-1262-5	9.492	8.316	3583821	2623615	60.945	50.522
41) L9 AR-1268-1	8.771	7.750	29233426	2922063	152.183	17.629 #

Data Path : Z:\pestpcbsrv\HPCHEM1\ECD_P\Data\PP022825\
 Data File : PP070147.D
 Signal(s) : Signal #1: ECD1A.ch Signal #2: ECD2B.ch
 Acq On : 28 Feb 2025 18:57
 Operator : YP\AJ
 Sample : Q1465-01
 Misc :
 ALS Vial : 19 Sample Multiplier: 1

Instrument :
 ECD_P
 ClientSampleId :
 ST-OILY-DEBRIS

Integration File signal 1: autoint1.e
 Integration File signal 2: autoint2.e
 Quant Time: Mar 01 00:27:21 2025
 Quant Method : Z:\pestpcbsrv\HPCHEM1\ECD_P\methods\PP022425.M
 Quant Title : GC EXTRACTABLES
 QLast Update : Tue Feb 25 05:10:19 2025
 Response via : Initial Calibration
 Integrator: ChemStation

Volume Inj. : 2 µl
 Signal #1 Phase : ZB-MR1 Signal #2 Phase: ZB-MR2
 Signal #1 Info : 30Mx0.32mmx 0.50µ Signal #2 Info : 30M x 0.32mm x 0.25µm

	Compound	RT#1	RT#2	Resp#1	Resp#2	ng/ml	ng/ml
42)	L9 AR-1268-2	8.836	7.812	3716113	6853184	22.442	47.250 #
43)	L9 AR-1268-3	0.000	8.019	0	656796	N.D.	5.363 #
44)	L9 AR-1268-4	9.492	8.316	3583821	2623615	56.842	49.330
45)	L9 AR-1268-5	9.916	8.621	1193368	1011290	2.869	2.847

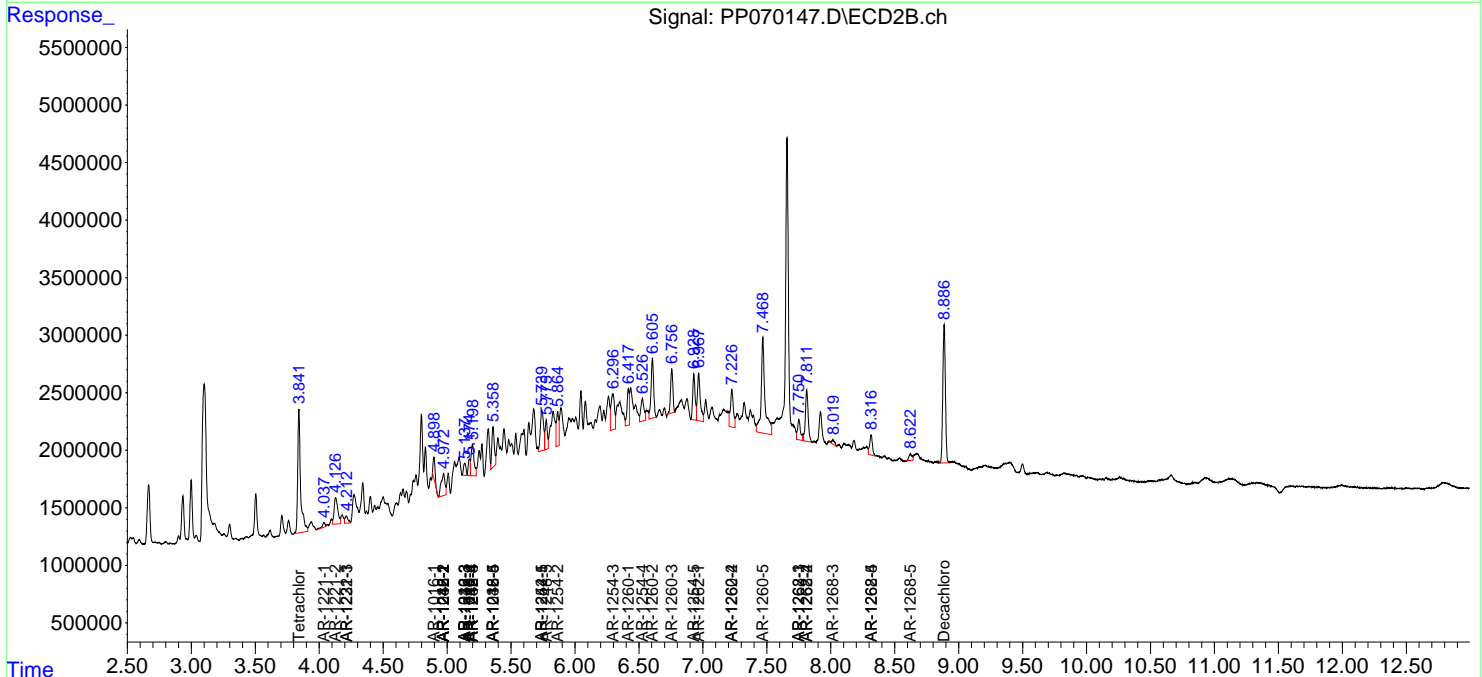
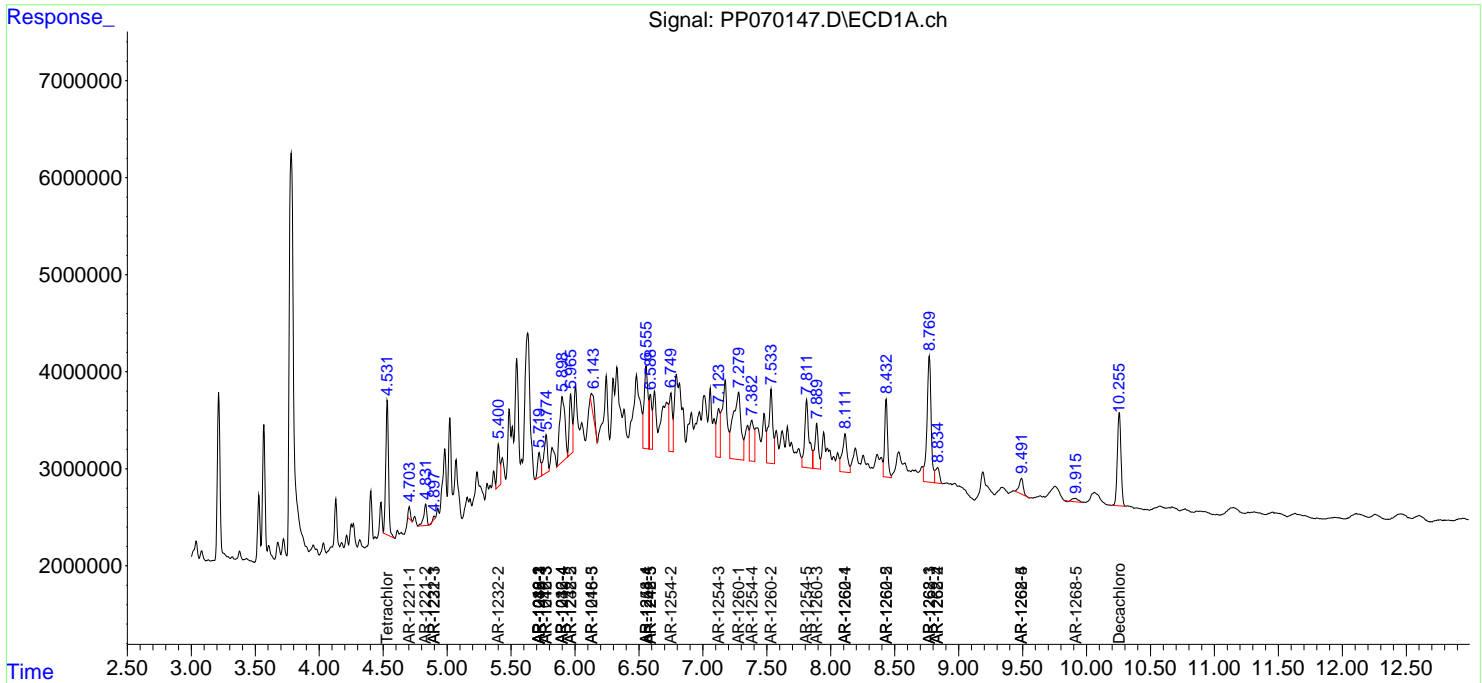
(f)=RT Delta > 1/2 Window (#)=Amounts differ by > 25% (m)=manual int.

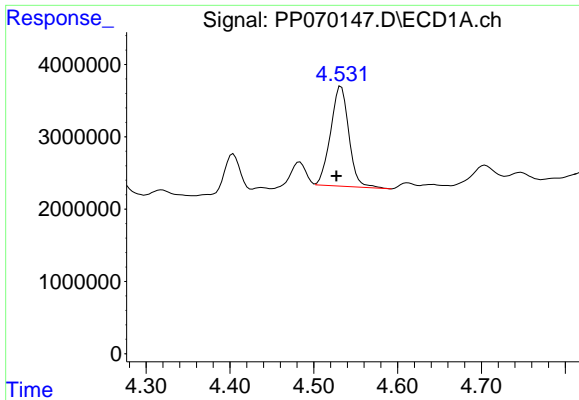
Data Path : Z:\pestpcbsrv\HPCHEM1\ECD_P\Data\PP022825\
 Data File : PP070147.D
 Signal(s) : Signal #1: ECD1A.ch Signal #2: ECD2B.ch
 Acq On : 28 Feb 2025 18:57
 Operator : YP\AJ
 Sample : Q1465-01
 Misc :
 ALS Vial : 19 Sample Multiplier: 1

Instrument :
 ECD_P
 ClientSampleId :
 ST-OILY-DEBRIS

Integration File signal 1: autoint1.e
 Integration File signal 2: autoint2.e
 Quant Time: Mar 01 00:27:21 2025
 Quant Method : Z:\pestpcbsrv\HPCHEM1\ECD_P\methods\PP022425.M
 Quant Title : GC EXTRACTABLES
 QLast Update : Tue Feb 25 05:10:19 2025
 Response via : Initial Calibration
 Integrator: ChemStation

Volume Inj. : 2 µl
 Signal #1 Phase : ZB-MR1 Signal #2 Phase: ZB-MR2
 Signal #1 Info : 30Mx0.32mmx 0.50µ Signal #2 Info : 30M x 0.32mm x 0.25µm

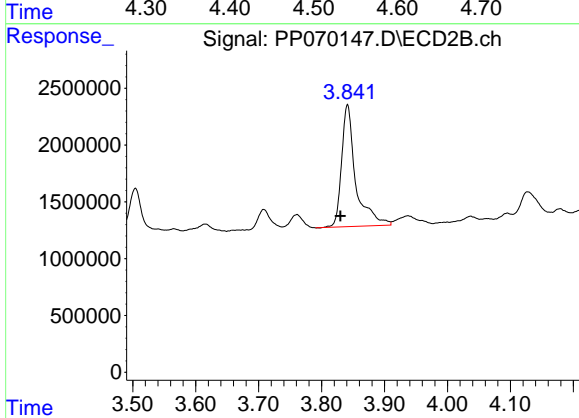




#1 Tetrachloro-m-xylene

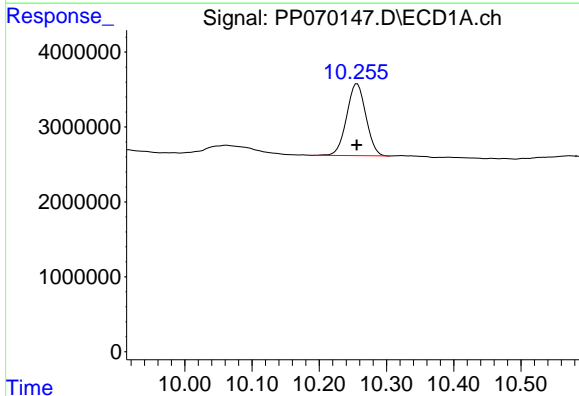
R.T.: 4.533 min
 Delta R.T.: 0.006 min
 Response: 20880970
 Conc: 14.23 ng/ml

Instrument :
 ECD_P
 ClientSampleId :
 ST-OILY-DEBRIS



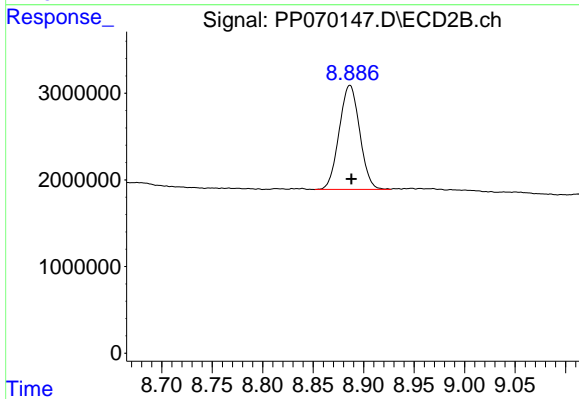
#1 Tetrachloro-m-xylene

R.T.: 3.841 min
 Delta R.T.: 0.011 min
 Response: 16766580
 Conc: 17.54 ng/ml



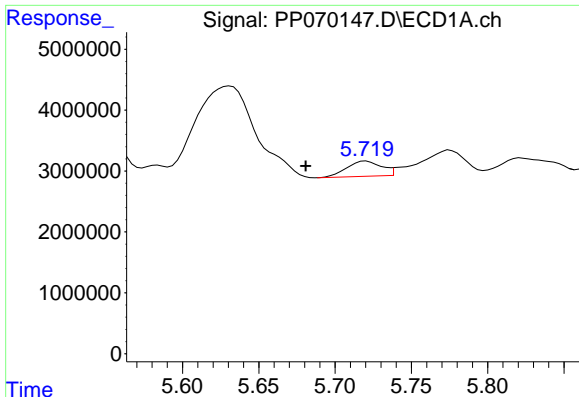
#2 Decachlorobiphenyl

R.T.: 10.256 min
 Delta R.T.: 0.000 min
 Response: 19078055
 Conc: 16.75 ng/ml



#2 Decachlorobiphenyl

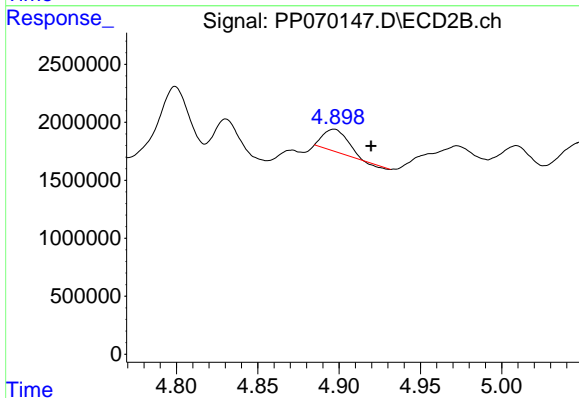
R.T.: 8.886 min
 Delta R.T.: -0.002 min
 Response: 16994263
 Conc: 15.68 ng/ml



#3 AR-1016-1

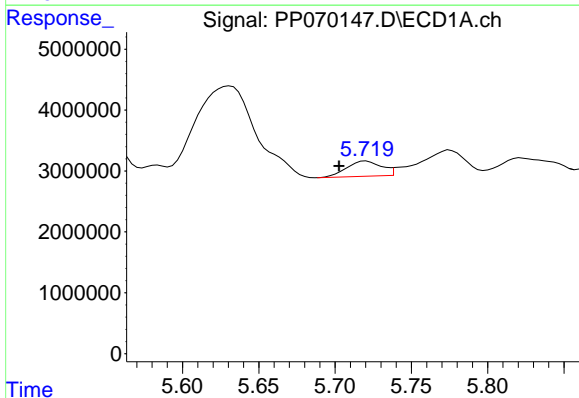
R.T.: 5.720 min
 Delta R.T.: 0.040 min
 Response: 3954192
 Conc: 79.36 ng/ml

Instrument :
 ECD_P
 ClientSampleId :
 ST-OILY-DEBRIS



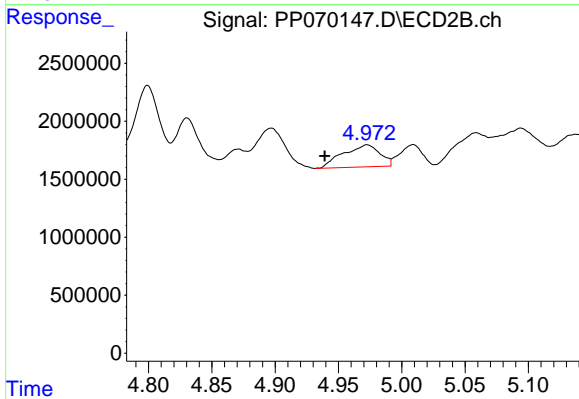
#3 AR-1016-1

R.T.: 4.897 min
 Delta R.T.: -0.023 min
 Response: 1936004
 Conc: 57.97 ng/ml



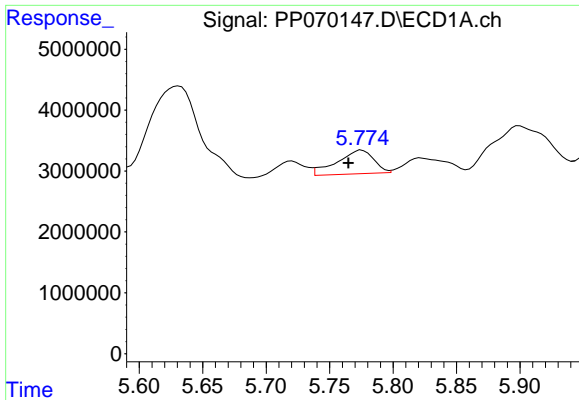
#4 AR-1016-2

R.T.: 5.720 min
 Delta R.T.: 0.018 min
 Response: 3954192
 Conc: 55.87 ng/ml



#4 AR-1016-2

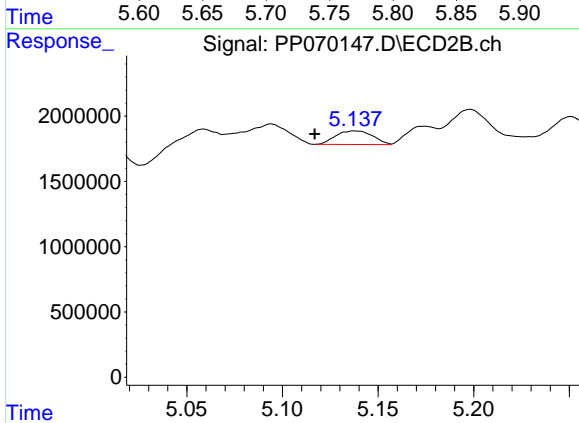
R.T.: 4.973 min
 Delta R.T.: 0.034 min
 Response: 3862773
 Conc: 82.90 ng/ml



#5 AR-1016-3

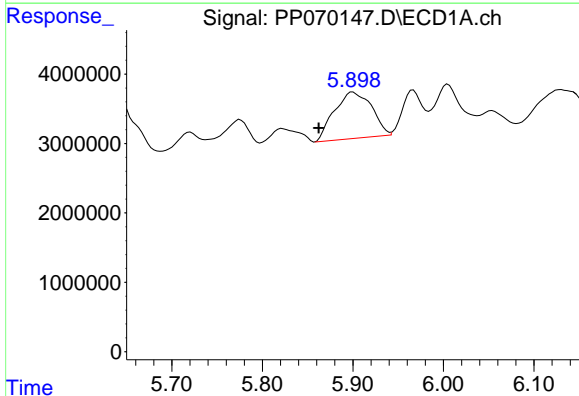
R.T.: 5.775 min
 Delta R.T.: 0.011 min
 Response: 7832583
 Conc: 178.33 ng/ml

Instrument :
 ECD_P
 ClientSampleId :
 ST-OILY-DEBRIS



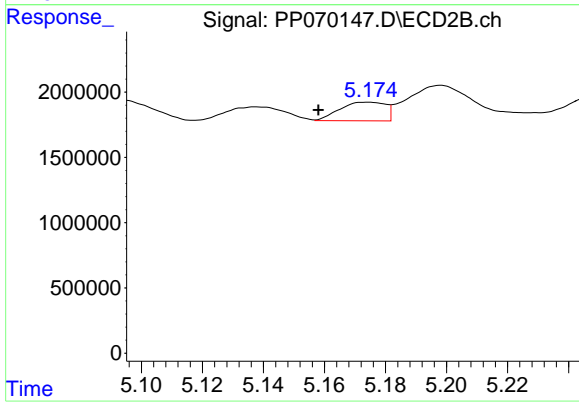
#5 AR-1016-3

R.T.: 5.138 min
 Delta R.T.: 0.021 min
 Response: 1408543
 Conc: 56.27 ng/ml



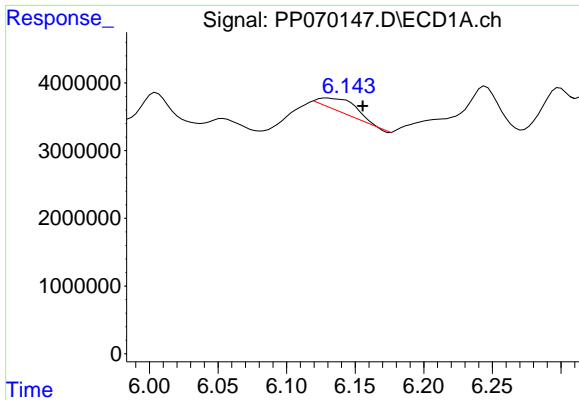
#6 AR-1016-4

R.T.: 5.900 min
 Delta R.T.: 0.037 min
 Response: 19151004
 Conc: 528.14 ng/ml



#6 AR-1016-4

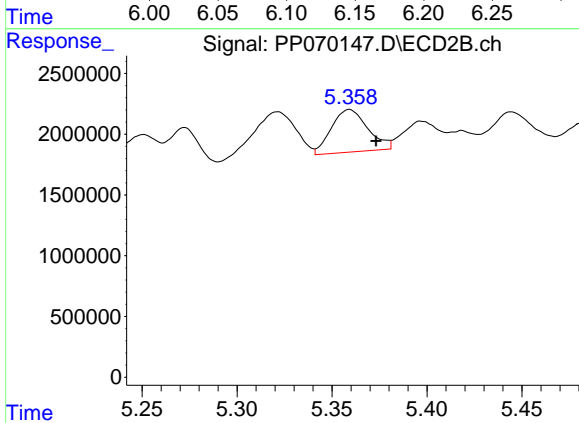
R.T.: 5.174 min
 Delta R.T.: 0.016 min
 Response: 1488248
 Conc: 74.15 ng/ml



#7 AR-1016-5

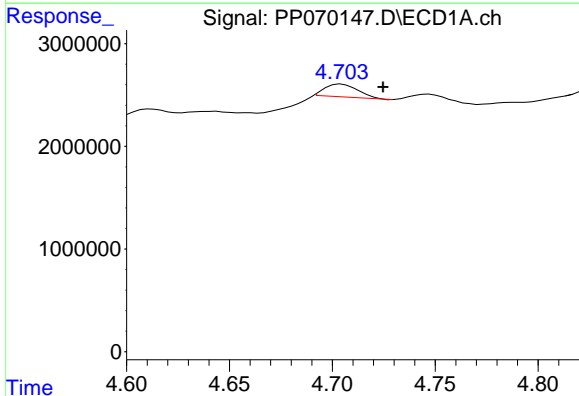
R.T.: 6.130 min
 Delta R.T.: -0.026 min
 Response: 3569018
 Conc: 106.42 ng/ml

Instrument :
 ECD_P
 ClientSampleId :
 ST-OILY-DEBRIS



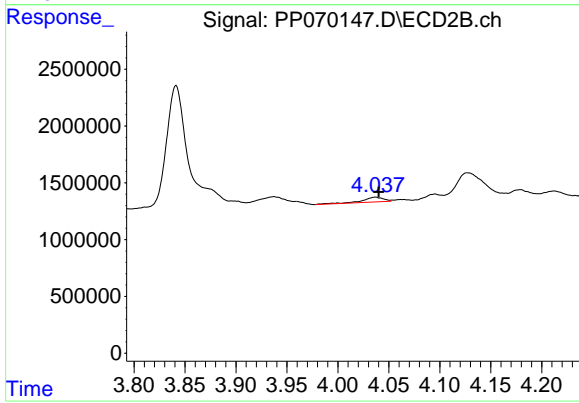
#7 AR-1016-5

R.T.: 5.359 min
 Delta R.T.: -0.014 min
 Response: 4687809
 Conc: 180.67 ng/ml



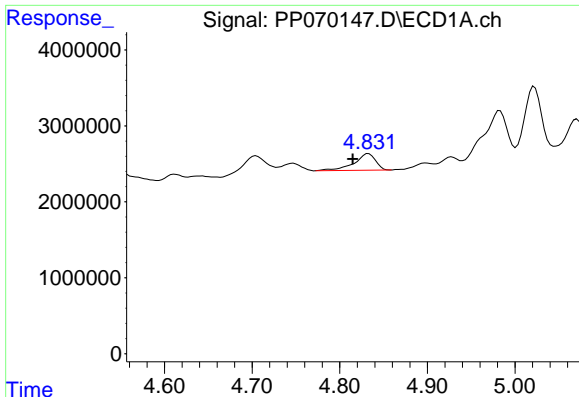
#8 AR-1221-1

R.T.: 4.704 min
 Delta R.T.: -0.020 min
 Response: 1375013
 Conc: 72.69 ng/ml



#8 AR-1221-1

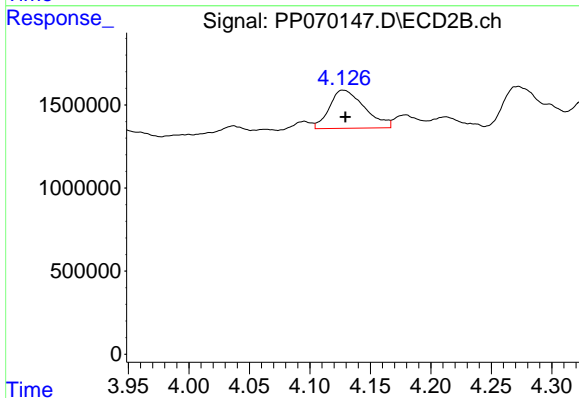
R.T.: 4.037 min
 Delta R.T.: -0.003 min
 Response: 614306
 Conc: 45.77 ng/ml



#9 AR-1221-2

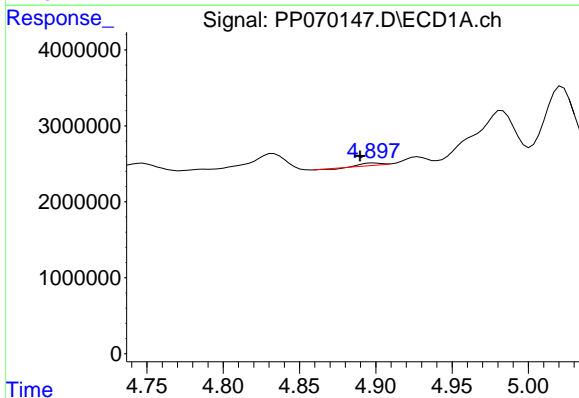
R.T.: 4.833 min
 Delta R.T.: 0.018 min
 Response: 3705556
 Conc: 253.95 ng/ml

Instrument :
 ECD_P
 ClientSampleId :
 ST-OILY-DEBRIS



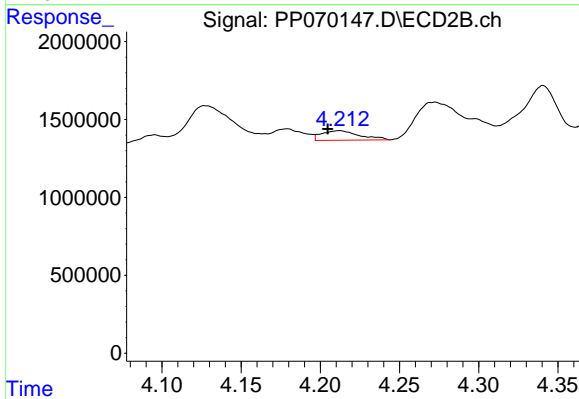
#9 AR-1221-2

R.T.: 4.128 min
 Delta R.T.: -0.002 min
 Response: 4641810
 Conc: 456.59 ng/ml



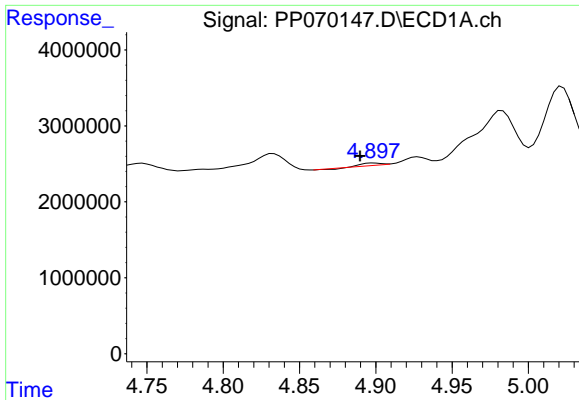
#10 AR-1221-3

R.T.: 4.899 min
 Delta R.T.: 0.009 min
 Response: 226804
 Conc: 5.26 ng/ml



#10 AR-1221-3

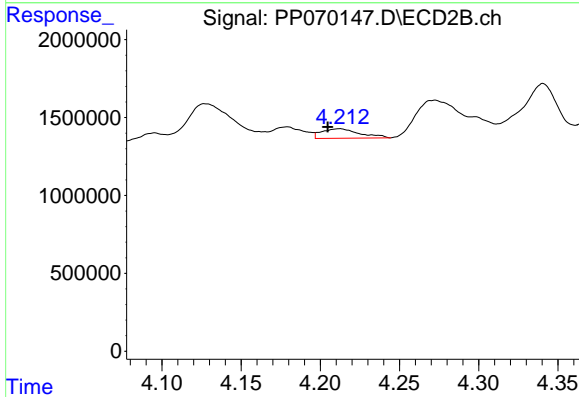
R.T.: 4.212 min
 Delta R.T.: 0.008 min
 Response: 1021147
 Conc: 33.64 ng/ml



#11 AR-1232-1

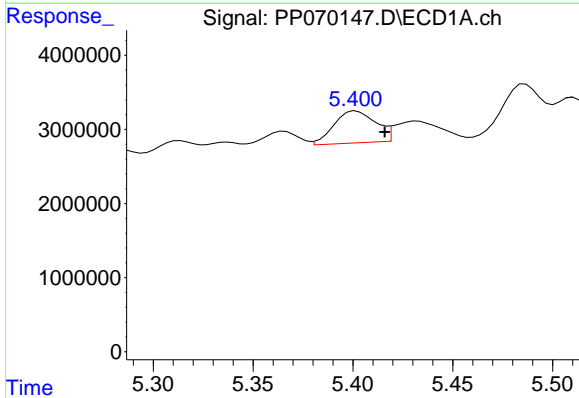
R.T.: 4.899 min
 Delta R.T.: 0.009 min
 Response: 226804
 Conc: 6.90 ng/ml

Instrument :
 ECD_P
 ClientSampleId :
 ST-OILY-DEBRIS



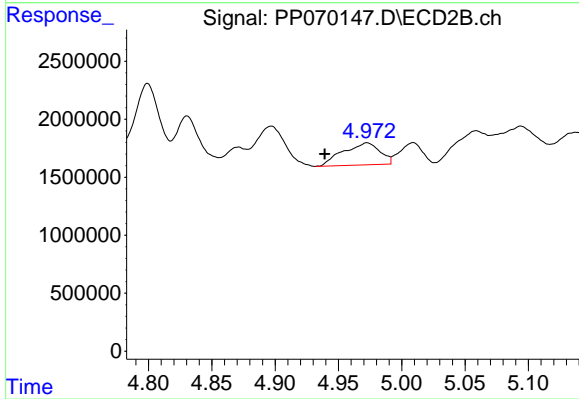
#11 AR-1232-1

R.T.: 4.212 min
 Delta R.T.: 0.008 min
 Response: 1021147
 Conc: 44.90 ng/ml



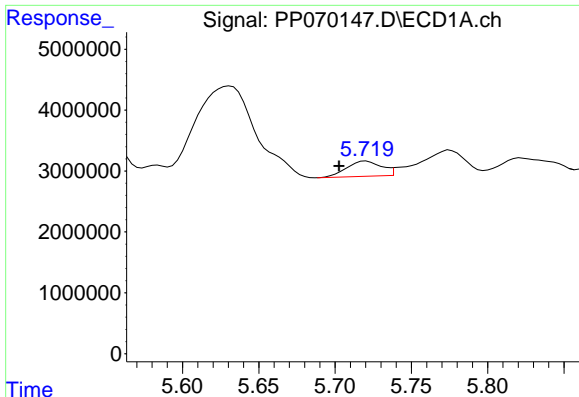
#12 AR-1232-2

R.T.: 5.402 min
 Delta R.T.: -0.014 min
 Response: 6245780
 Conc: 384.11 ng/ml



#12 AR-1232-2

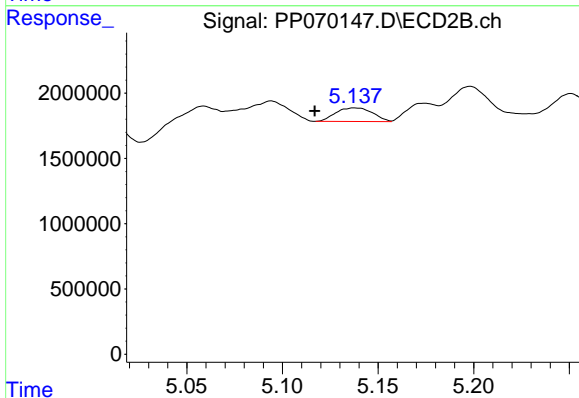
R.T.: 4.973 min
 Delta R.T.: 0.034 min
 Response: 3862773
 Conc: 169.17 ng/ml



#13 AR-1232-3

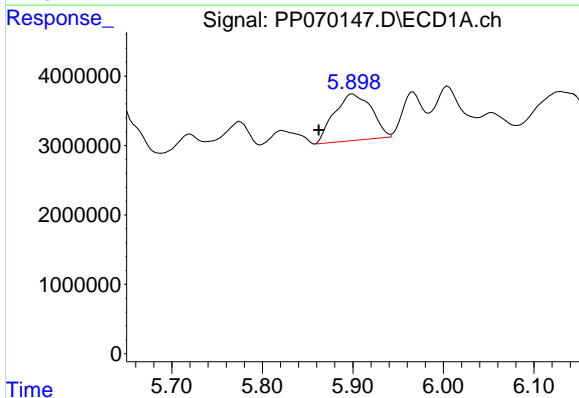
R.T.: 5.720 min
 Delta R.T.: 0.018 min
 Response: 3954192
 Conc: 113.41 ng/ml

Instrument :
 ECD_P
 ClientSampleId :
 ST-OILY-DEBRIS



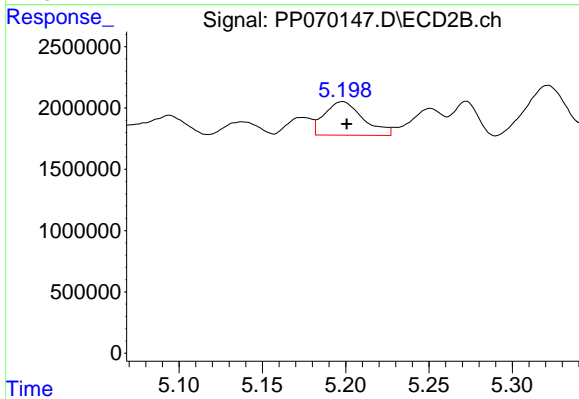
#13 AR-1232-3

R.T.: 5.138 min
 Delta R.T.: 0.021 min
 Response: 1408543
 Conc: 117.14 ng/ml



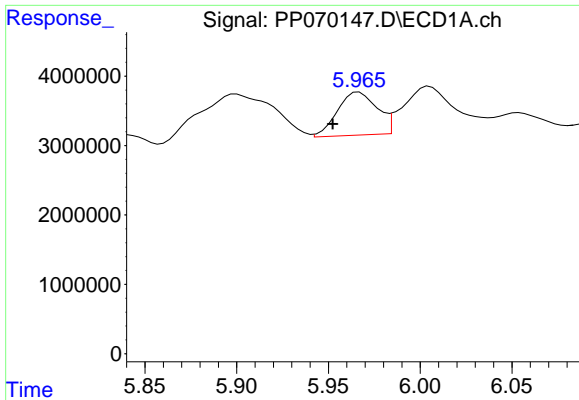
#14 AR-1232-4

R.T.: 5.900 min
 Delta R.T.: 0.037 min
 Response: 19151004
 Conc: 1075.93 ng/ml



#14 AR-1232-4

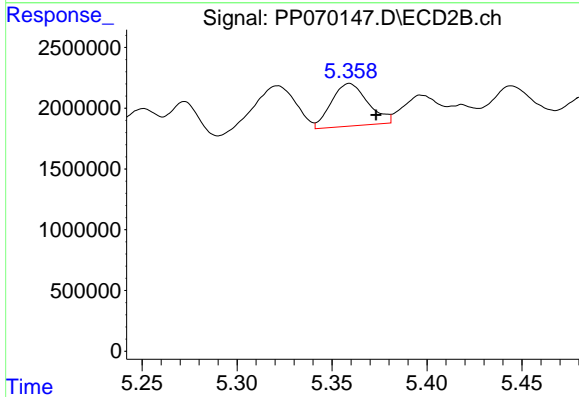
R.T.: 5.198 min
 Delta R.T.: -0.003 min
 Response: 4429249
 Conc: 407.65 ng/ml



#15 AR-1232-5

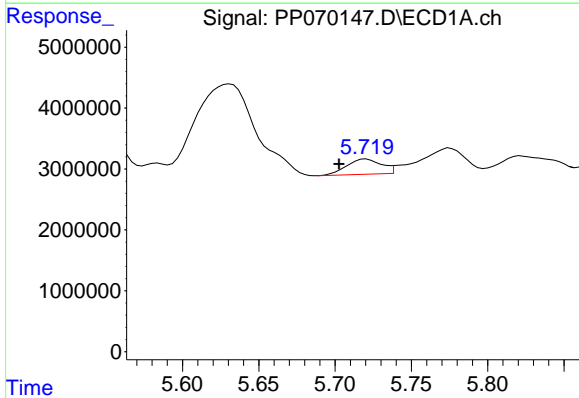
R.T.: 5.967 min
 Delta R.T.: 0.014 min
 Response: 9279780
 Conc: 736.07 ng/ml

Instrument :
 ECD_P
 ClientSampleId :
 ST-OILY-DEBRIS



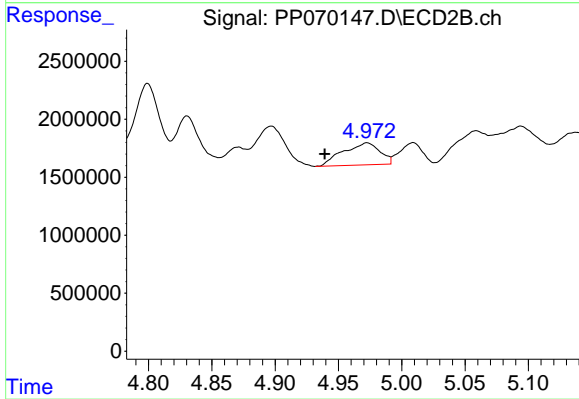
#15 AR-1232-5

R.T.: 5.359 min
 Delta R.T.: -0.014 min
 Response: 4687809
 Conc: 414.65 ng/ml



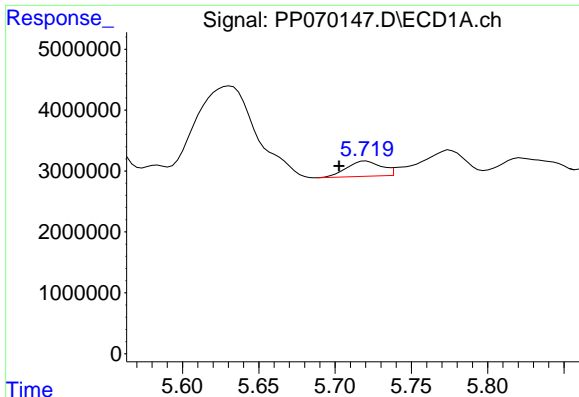
#16 AR-1242-1

R.T.: 5.720 min
 Delta R.T.: 0.018 min
 Response: 3954192
 Conc: 93.14 ng/ml



#16 AR-1242-1

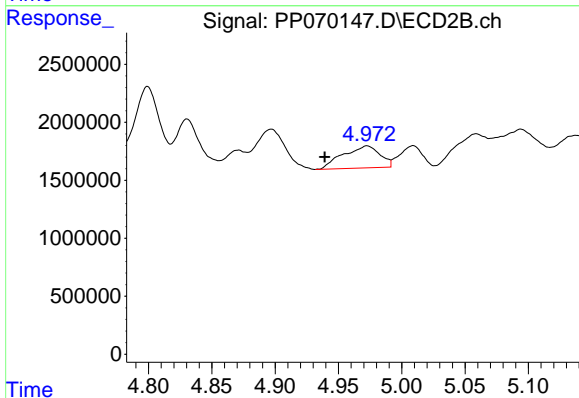
R.T.: 4.973 min
 Delta R.T.: 0.034 min
 Response: 3862773
 Conc: 144.85 ng/ml



#17 AR-1242-2

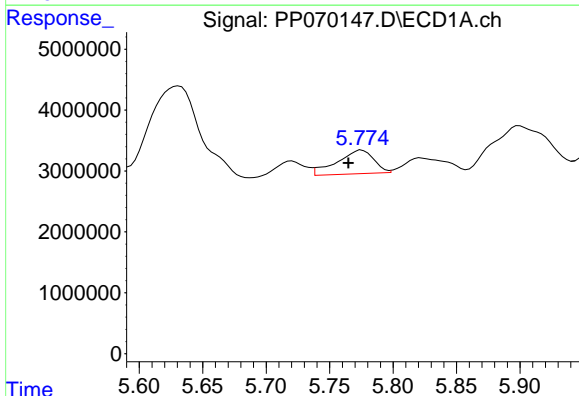
R.T.: 5.720 min
 Delta R.T.: 0.018 min
 Response: 3954192
 Conc: 68.72 ng/ml

Instrument :
 ECD_P
 ClientSampleId :
 ST-OILY-DEBRIS



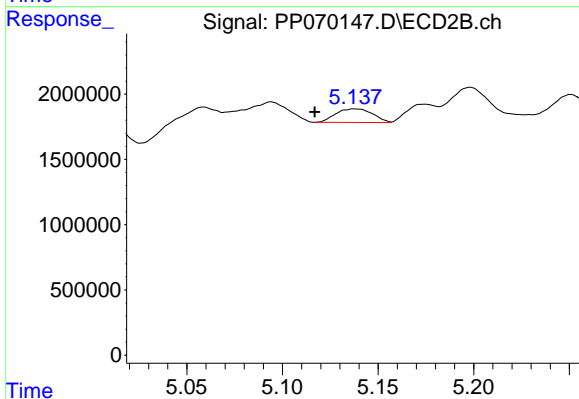
#17 AR-1242-2

R.T.: 4.973 min
 Delta R.T.: 0.034 min
 Response: 3862773
 Conc: 103.83 ng/ml



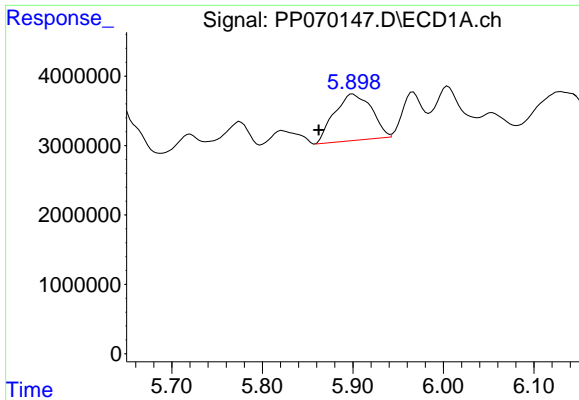
#18 AR-1242-3

R.T.: 5.775 min
 Delta R.T.: 0.011 min
 Response: 7832583
 Conc: 206.53 ng/ml



#18 AR-1242-3

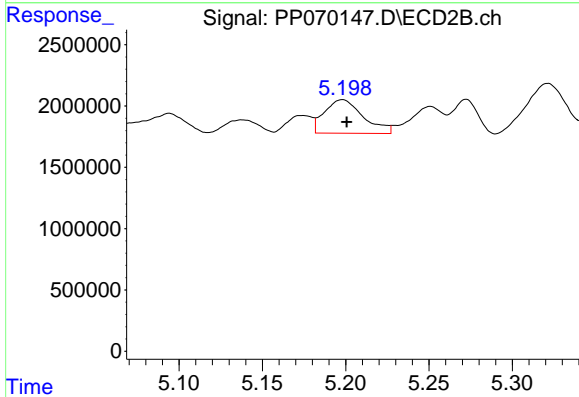
R.T.: 5.138 min
 Delta R.T.: 0.021 min
 Response: 1408543
 Conc: 71.55 ng/ml



#19 AR-1242-4

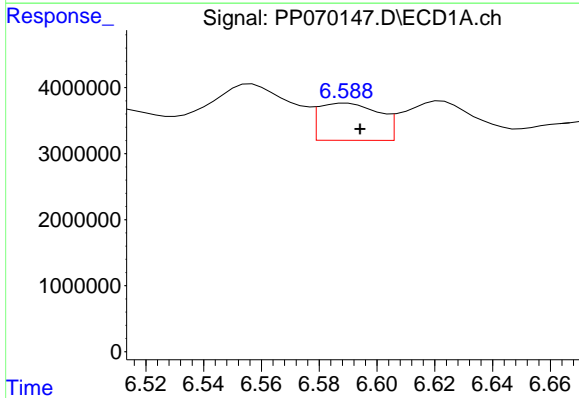
R.T.: 5.900 min
 Delta R.T.: 0.037 min
 Response: 19151004
 Conc: 642.33 ng/ml

Instrument :
 ECD_P
 ClientSampleId :
 ST-OILY-DEBRIS



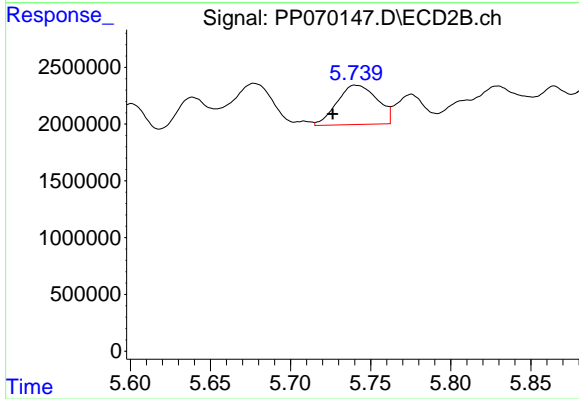
#19 AR-1242-4

R.T.: 5.198 min
 Delta R.T.: -0.003 min
 Response: 4429249
 Conc: 225.35 ng/ml



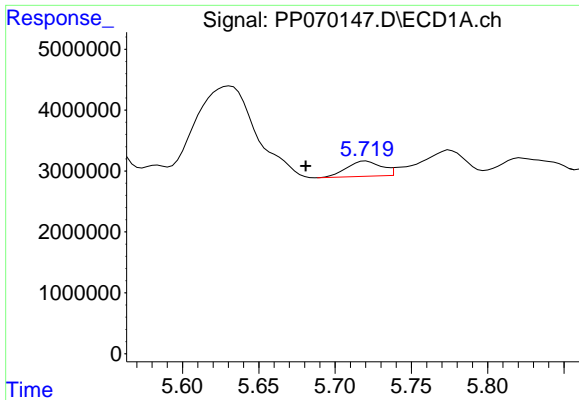
#20 AR-1242-5

R.T.: 6.590 min
 Delta R.T.: -0.004 min
 Response: 8171334
 Conc: 231.91 ng/ml



#20 AR-1242-5

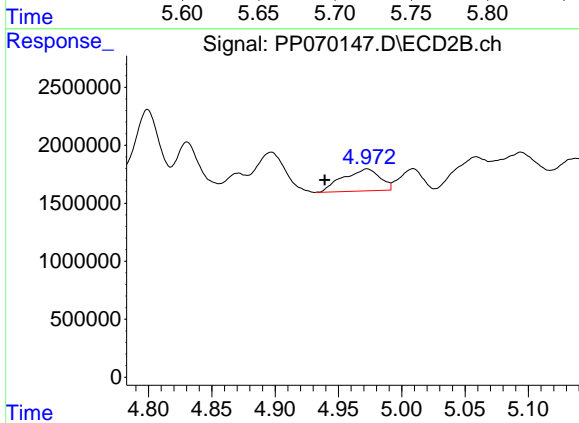
R.T.: 5.741 min
 Delta R.T.: 0.014 min
 Response: 6040362
 Conc: 242.86 ng/ml



#21 AR-1248-1

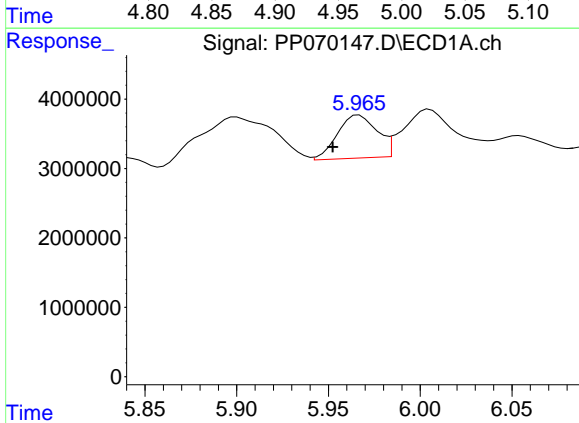
R.T.: 5.720 min
 Delta R.T.: 0.040 min
 Response: 3954192
 Conc: 120.89 ng/ml

Instrument :
 ECD_P
 ClientSampleId :
 ST-OILY-DEBRIS



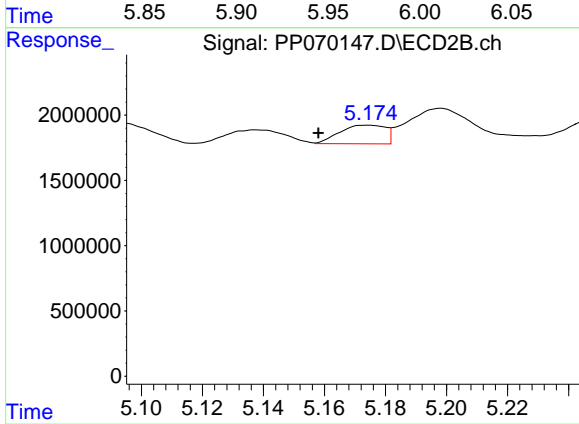
#21 AR-1248-1

R.T.: 4.973 min
 Delta R.T.: 0.034 min
 Response: 3862773
 Conc: 182.47 ng/ml



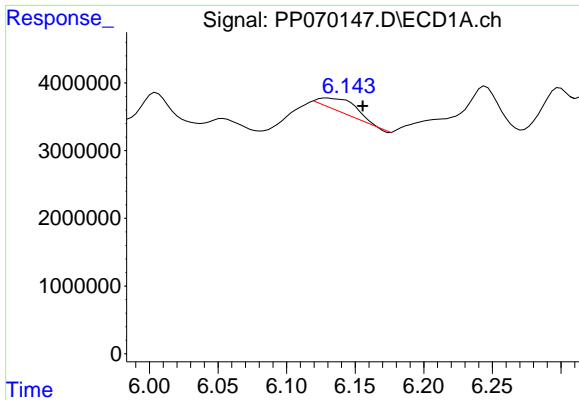
#22 AR-1248-2

R.T.: 5.967 min
 Delta R.T.: 0.014 min
 Response: 9279780
 Conc: 220.15 ng/ml



#22 AR-1248-2

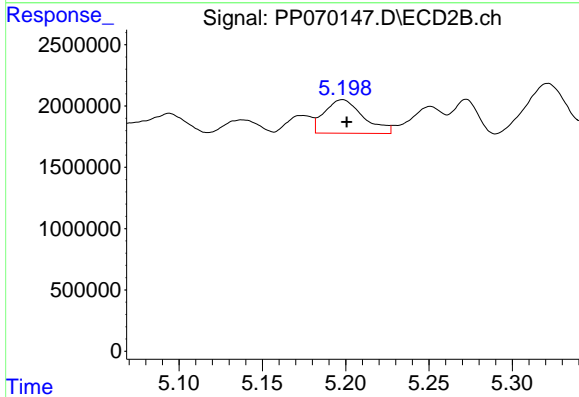
R.T.: 5.174 min
 Delta R.T.: 0.016 min
 Response: 1488248
 Conc: 52.68 ng/ml



#23 AR-1248-3

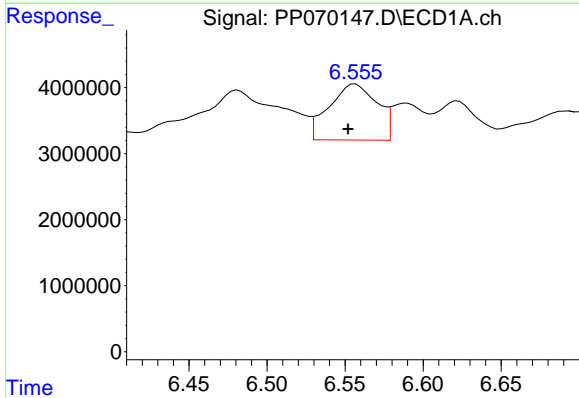
R.T.: 6.130 min
 Delta R.T.: -0.026 min
 Response: 3569018
 Conc: 79.01 ng/ml

Instrument :
 ECD_P
 ClientSampleId :
 ST-OILY-DEBRIS



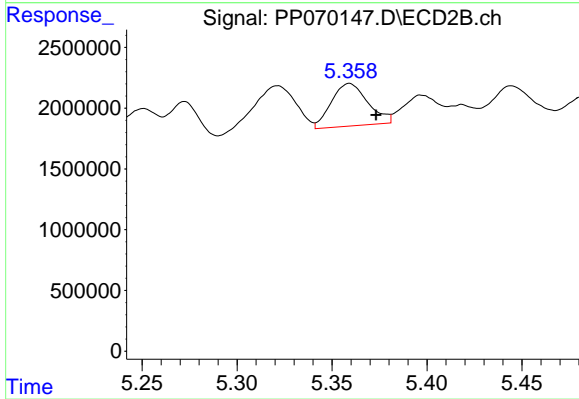
#23 AR-1248-3

R.T.: 5.198 min
 Delta R.T.: -0.003 min
 Response: 4429249
 Conc: 148.85 ng/ml



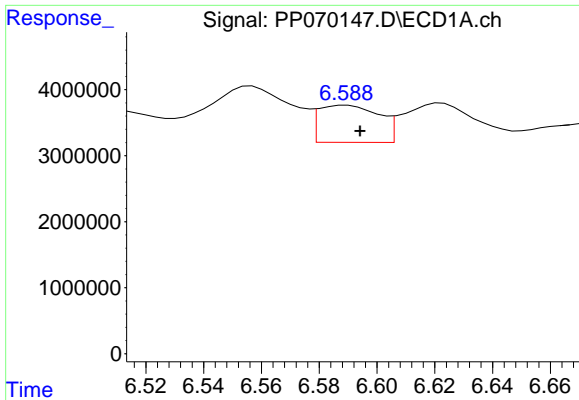
#24 AR-1248-4

R.T.: 6.557 min
 Delta R.T.: 0.005 min
 Response: 18106650
 Conc: 307.08 ng/ml



#24 AR-1248-4

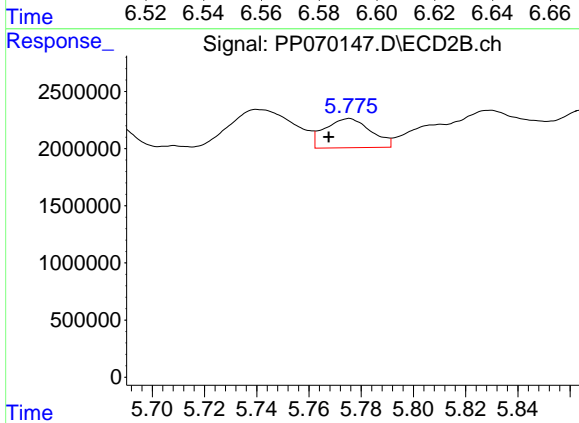
R.T.: 5.359 min
 Delta R.T.: -0.014 min
 Response: 4687809
 Conc: 133.38 ng/ml



#25 AR-1248-5

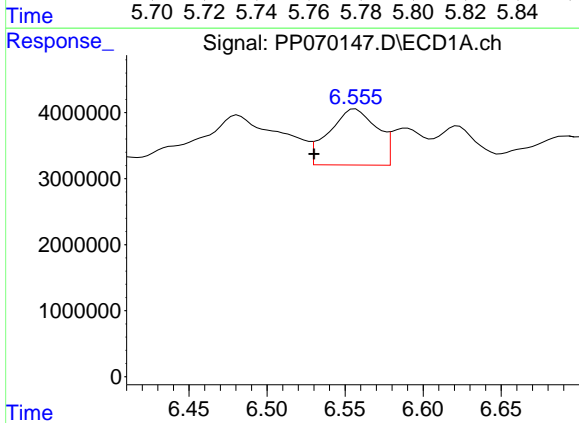
R.T.: 6.590 min
 Delta R.T.: -0.004 min
 Response: 8171334
 Conc: 142.89 ng/ml

Instrument :
 ECD_P
 ClientSampleId :
 ST-OILY-DEBRIS



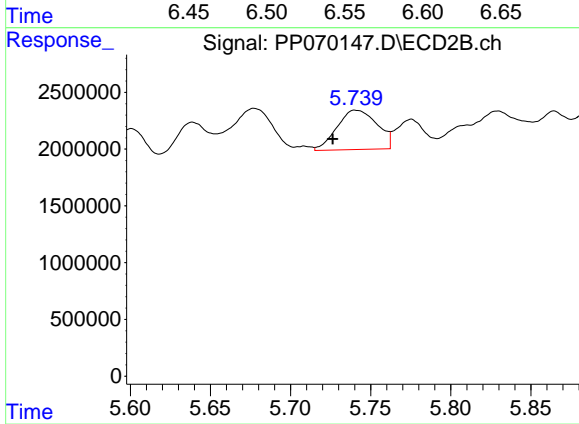
#25 AR-1248-5

R.T.: 5.775 min
 Delta R.T.: 0.008 min
 Response: 3124990
 Conc: 86.40 ng/ml



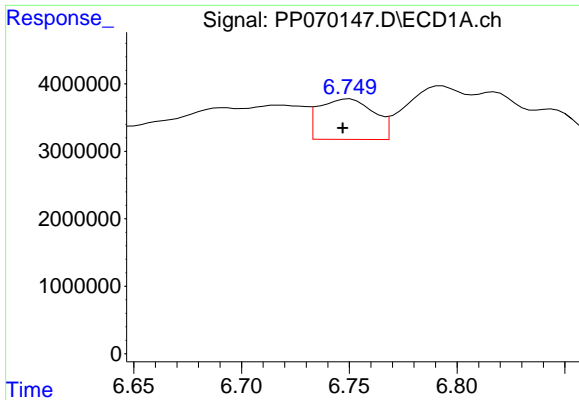
#26 AR-1254-1

R.T.: 6.557 min
 Delta R.T.: 0.026 min
 Response: 18106650
 Conc: 319.34 ng/ml



#26 AR-1254-1

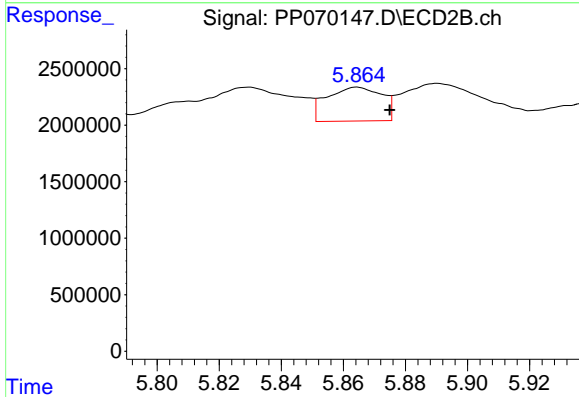
R.T.: 5.741 min
 Delta R.T.: 0.014 min
 Response: 6040362
 Conc: 110.69 ng/ml



#27 AR-1254-2

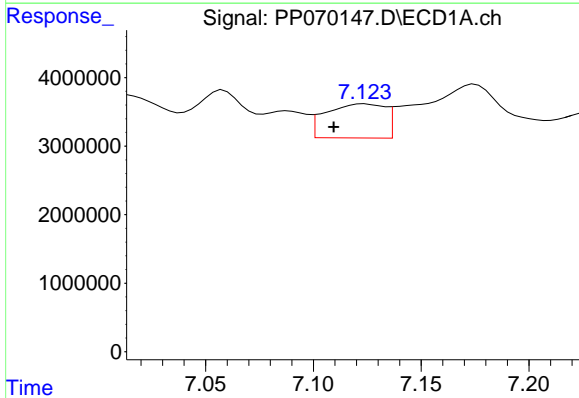
R.T.: 6.750 min
 Delta R.T.: 0.004 min
 Response: 10685495
 Conc: 121.86 ng/ml

Instrument :
 ECD_P
 ClientSampleId :
 ST-OILY-DEBRIS



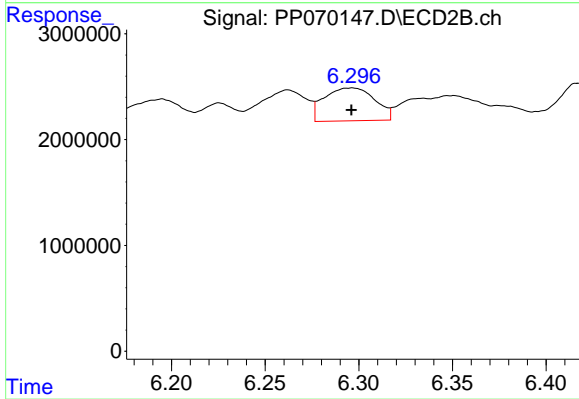
#27 AR-1254-2

R.T.: 5.864 min
 Delta R.T.: -0.010 min
 Response: 3685121
 Conc: 75.60 ng/ml



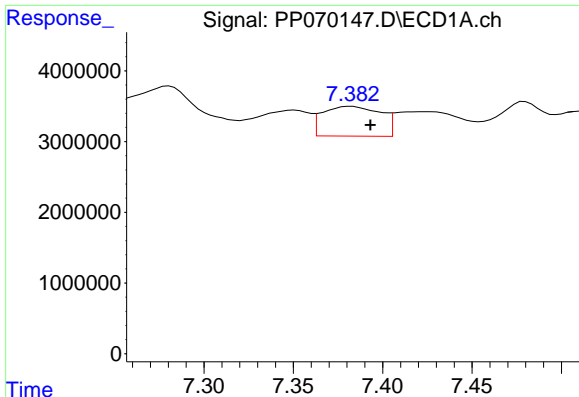
#28 AR-1254-3

R.T.: 7.124 min
 Delta R.T.: 0.015 min
 Response: 9484702
 Conc: 106.42 ng/ml



#28 AR-1254-3

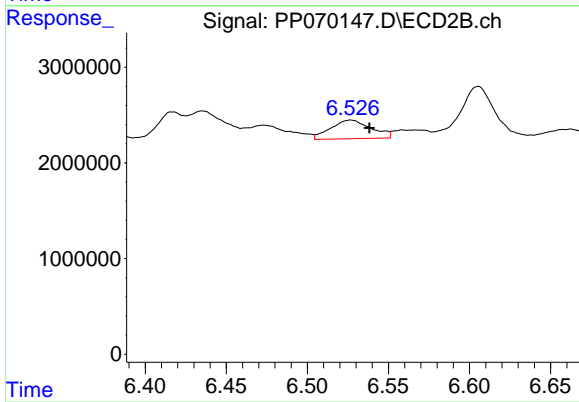
R.T.: 6.296 min
 Delta R.T.: 0.000 min
 Response: 5846401
 Conc: 77.11 ng/ml



#29 AR-1254-4

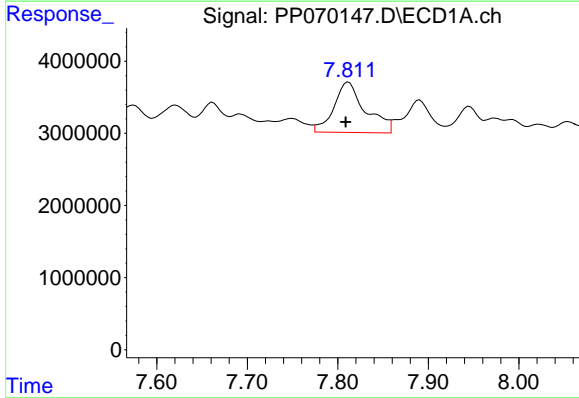
R.T.: 7.383 min
 Delta R.T.: -0.010 min
 Response: 9484711
 Conc: 127.29 ng/ml

Instrument :
 ECD_P
 ClientSampleId :
 ST-OILY-DEBRIS



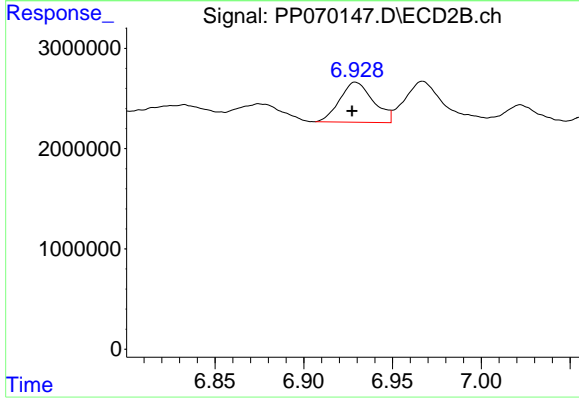
#29 AR-1254-4

R.T.: 6.527 min
 Delta R.T.: -0.012 min
 Response: 3367678
 Conc: 65.44 ng/ml



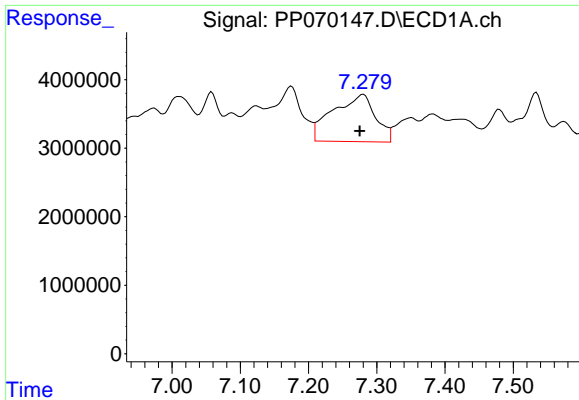
#30 AR-1254-5

R.T.: 7.812 min
 Delta R.T.: 0.003 min
 Response: 16942267
 Conc: 252.26 ng/ml



#30 AR-1254-5

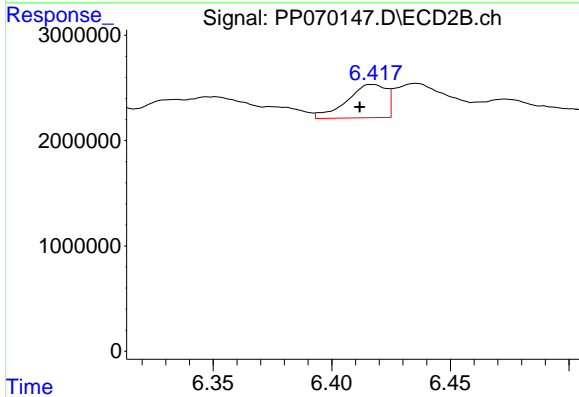
R.T.: 6.929 min
 Delta R.T.: 0.002 min
 Response: 5237067
 Conc: 77.51 ng/ml



#31 AR-1260-1

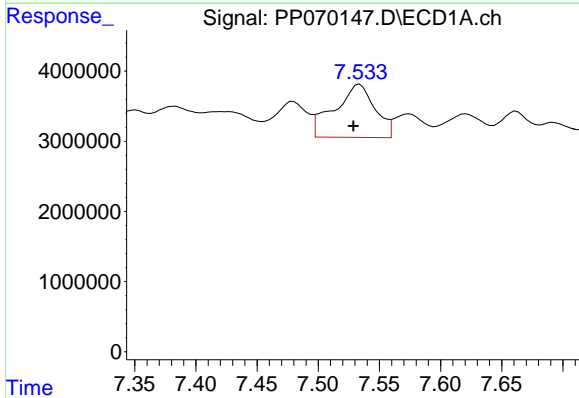
R.T.: 7.280 min
 Delta R.T.: 0.005 min
 Response: 29851097
 Conc: 511.50 ng/ml

Instrument :
 ECD_P
 ClientSampleId :
 ST-OILY-DEBRIS



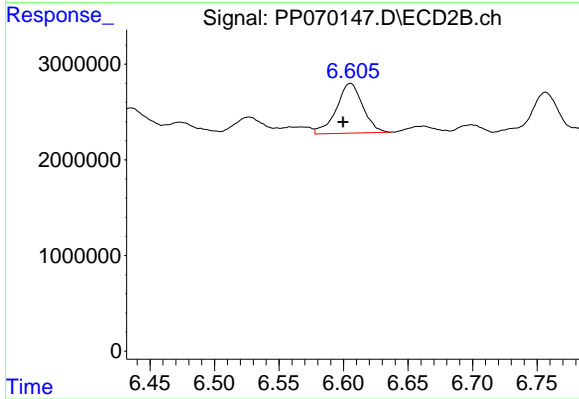
#31 AR-1260-1

R.T.: 6.417 min
 Delta R.T.: 0.005 min
 Response: 3681377
 Conc: 74.31 ng/ml



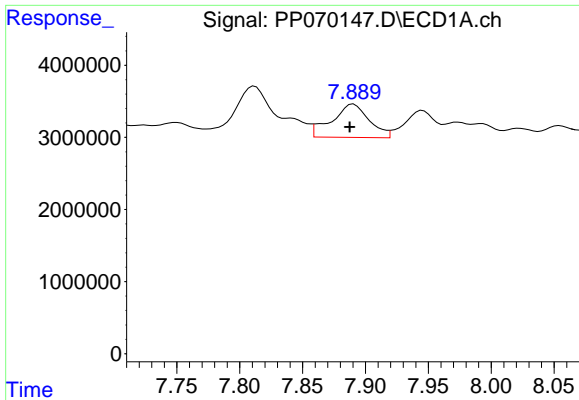
#32 AR-1260-2

R.T.: 7.534 min
 Delta R.T.: 0.005 min
 Response: 17406141
 Conc: 212.98 ng/ml



#32 AR-1260-2

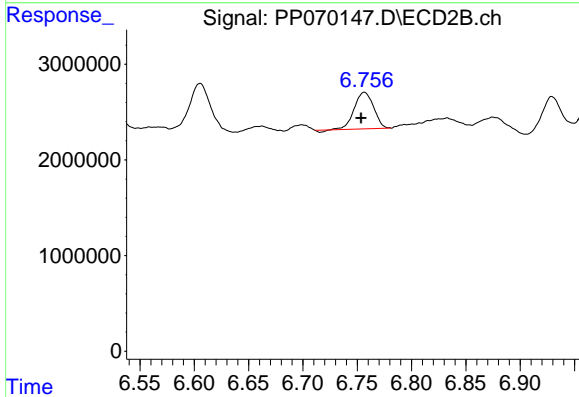
R.T.: 6.605 min
 Delta R.T.: 0.006 min
 Response: 7406549
 Conc: 113.22 ng/ml



#33 AR-1260-3

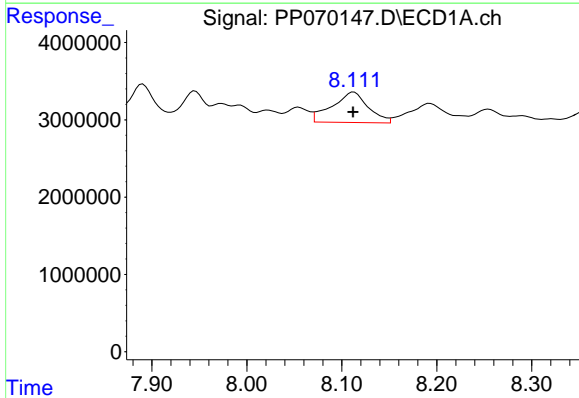
R.T.: 7.890 min
 Delta R.T.: 0.003 min
 Response: 9550037
 Conc: 152.17 ng/ml

Instrument :
 ECD_P
 ClientSampleId :
 ST-OILY-DEBRIS



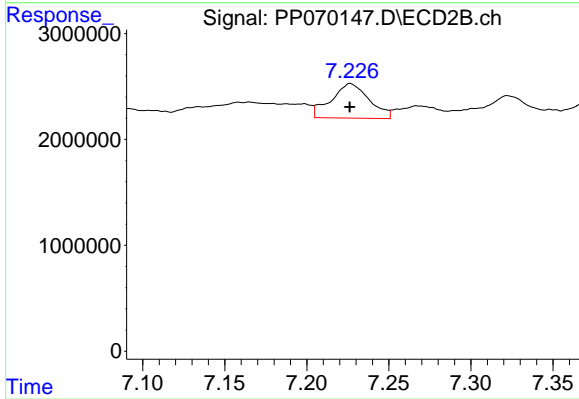
#33 AR-1260-3

R.T.: 6.757 min
 Delta R.T.: 0.003 min
 Response: 4694609
 Conc: 77.83 ng/ml



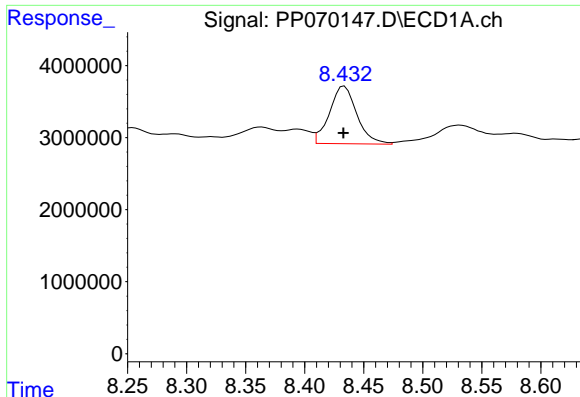
#34 AR-1260-4

R.T.: 8.113 min
 Delta R.T.: 0.000 min
 Response: 10405954
 Conc: 164.13 ng/ml



#34 AR-1260-4

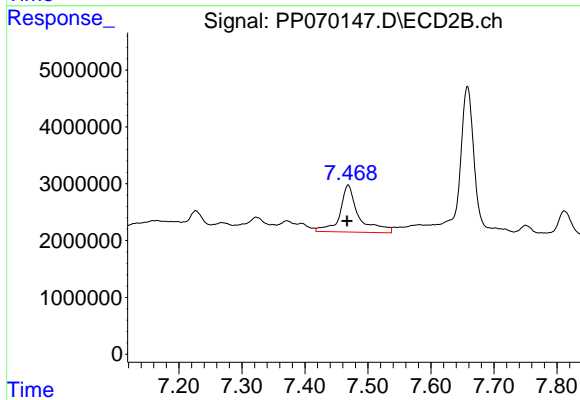
R.T.: 7.227 min
 Delta R.T.: 0.000 min
 Response: 5251817
 Conc: 107.47 ng/ml



#35 AR-1260-5

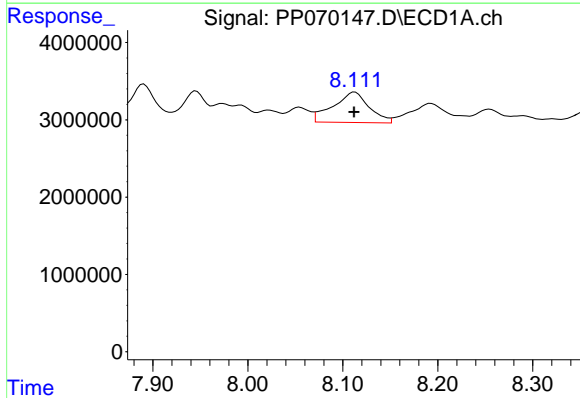
R.T.: 8.434 min
 Delta R.T.: 0.000 min
 Response: 12932541
 Conc: 98.58 ng/ml

Instrument :
 ECD_P
 ClientSampleId :
 ST-OILY-DEBRIS



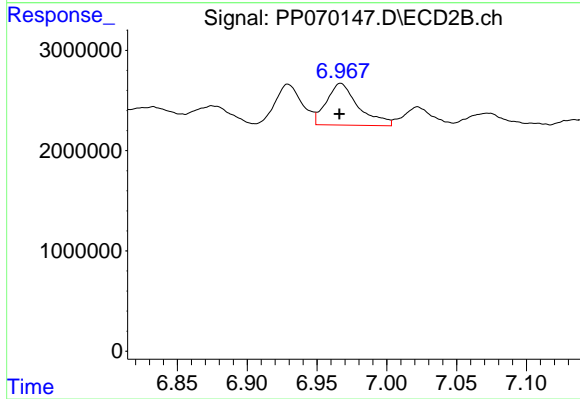
#35 AR-1260-5

R.T.: 7.469 min
 Delta R.T.: 0.002 min
 Response: 17192557
 Conc: 144.26 ng/ml



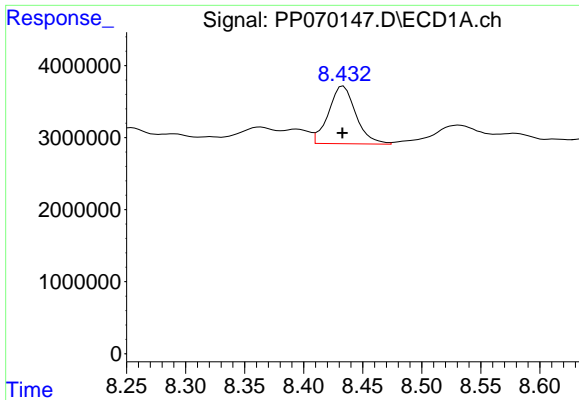
#36 AR-1262-1

R.T.: 8.113 min
 Delta R.T.: 0.000 min
 Response: 10405954
 Conc: 128.90 ng/ml



#36 AR-1262-1

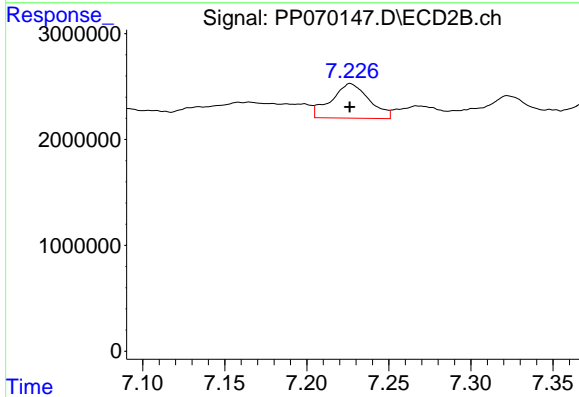
R.T.: 6.967 min
 Delta R.T.: 0.000 min
 Response: 6599026
 Conc: 79.05 ng/ml



#37 AR-1262-2

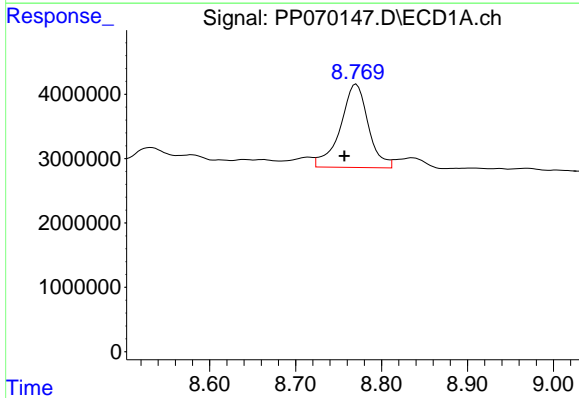
R.T.: 8.434 min
 Delta R.T.: 0.000 min
 Response: 12932541
 Conc: 80.28 ng/ml

Instrument :
 ECD_P
 ClientSampleId :
 ST-OILY-DEBRIS



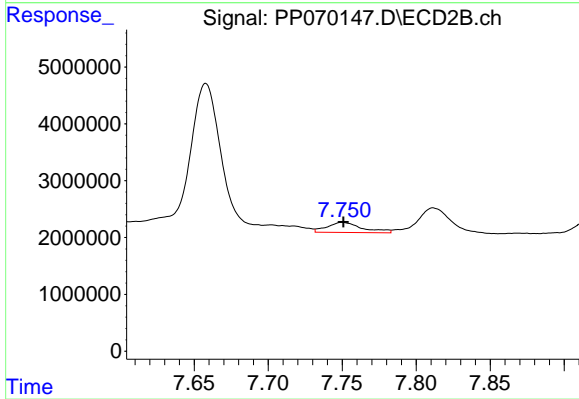
#37 AR-1262-2

R.T.: 7.227 min
 Delta R.T.: 0.000 min
 Response: 5251817
 Conc: 79.22 ng/ml



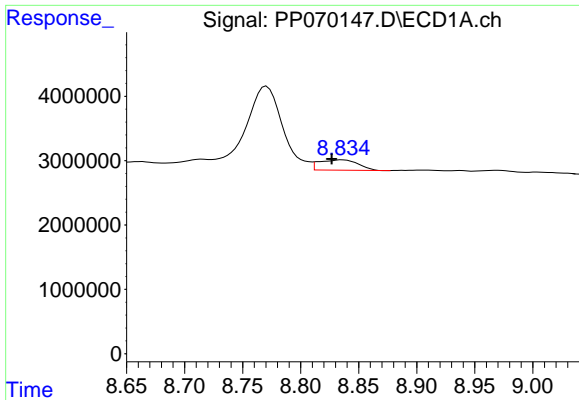
#38 AR-1262-3

R.T.: 8.771 min
 Delta R.T.: 0.014 min
 Response: 29233426
 Conc: 264.29 ng/ml



#38 AR-1262-3

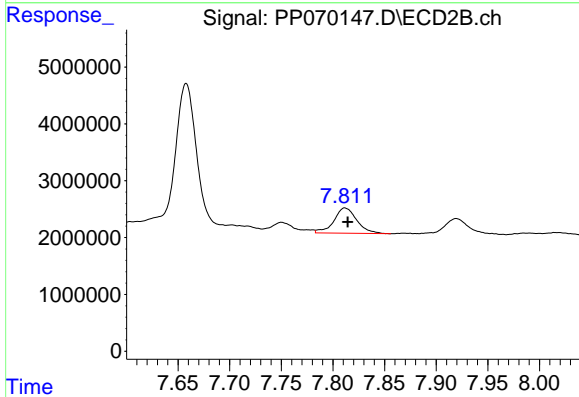
R.T.: 7.750 min
 Delta R.T.: 0.000 min
 Response: 2922063
 Conc: 48.23 ng/ml



#39 AR-1262-4

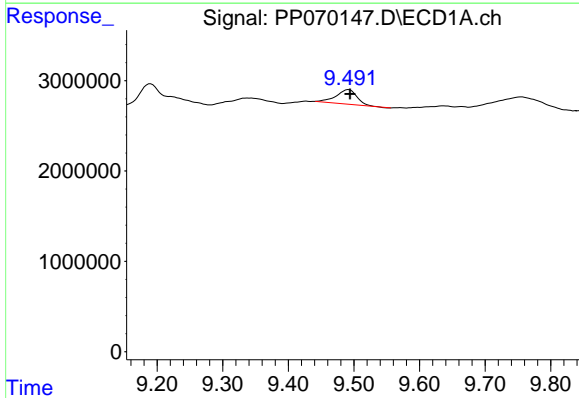
R.T.: 8.836 min
 Delta R.T.: 0.009 min
 Response: 3716113
 Conc: 44.28 ng/ml

Instrument :
 ECD_P
 ClientSampleId :
 ST-OILY-DEBRIS



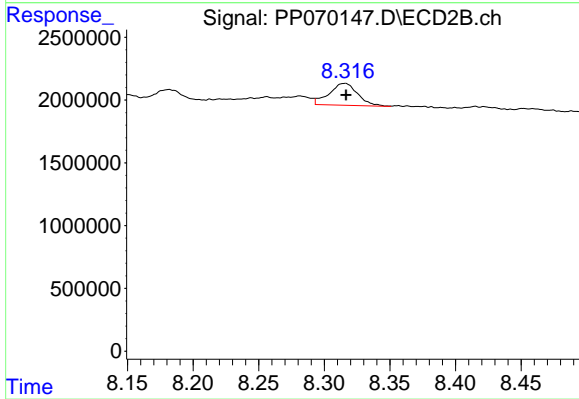
#39 AR-1262-4

R.T.: 7.812 min
 Delta R.T.: -0.002 min
 Response: 6853184
 Conc: 64.98 ng/ml



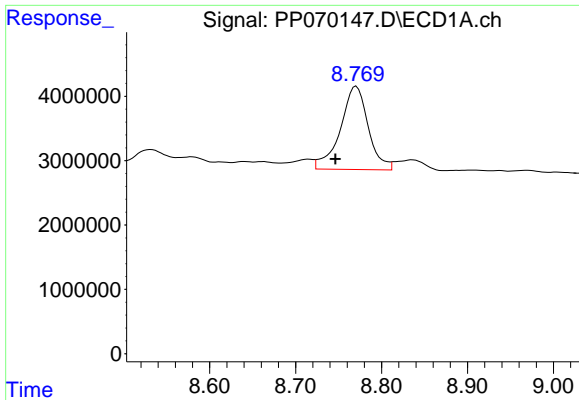
#40 AR-1262-5

R.T.: 9.492 min
 Delta R.T.: -0.002 min
 Response: 3583821
 Conc: 60.94 ng/ml



#40 AR-1262-5

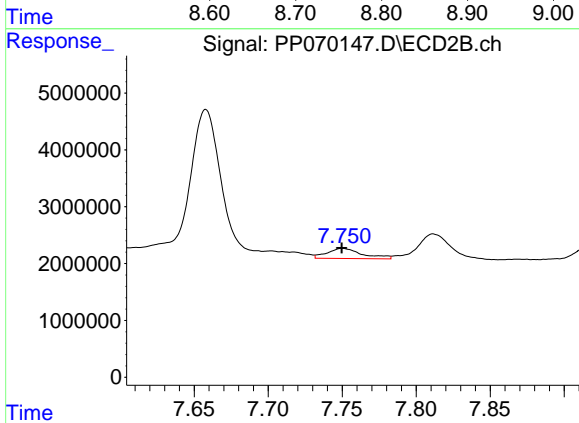
R.T.: 8.316 min
 Delta R.T.: -0.001 min
 Response: 2623615
 Conc: 50.52 ng/ml



#41 AR-1268-1

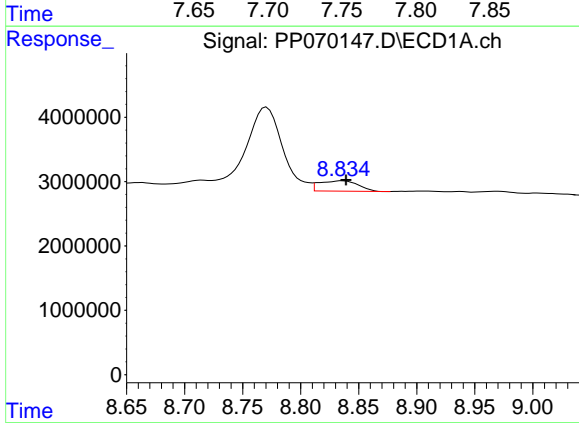
R.T.: 8.771 min
 Delta R.T.: 0.025 min
 Response: 29233426
 Conc: 152.18 ng/ml

Instrument :
 ECD_P
 ClientSampleId :
 ST-OILY-DEBRIS



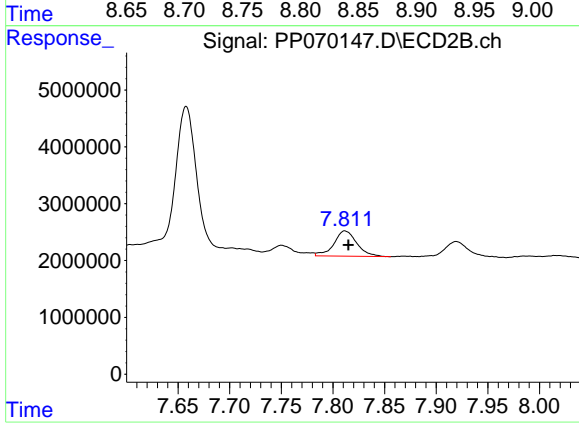
#41 AR-1268-1

R.T.: 7.750 min
 Delta R.T.: 0.000 min
 Response: 2922063
 Conc: 17.63 ng/ml



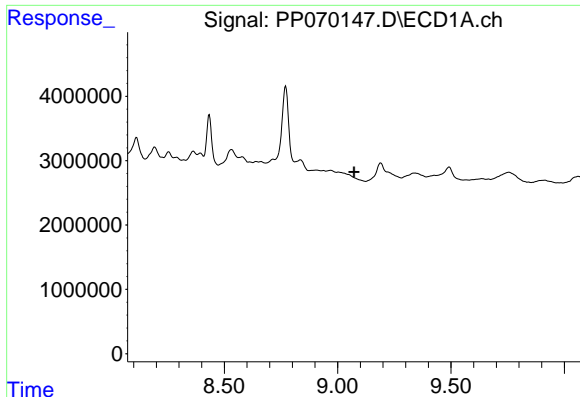
#42 AR-1268-2

R.T.: 8.836 min
 Delta R.T.: -0.003 min
 Response: 3716113
 Conc: 22.44 ng/ml



#42 AR-1268-2

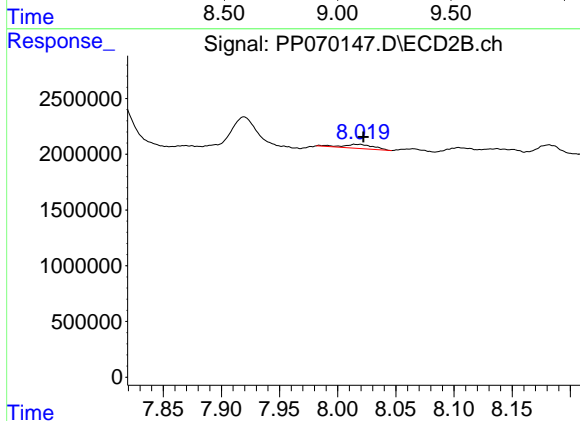
R.T.: 7.812 min
 Delta R.T.: -0.003 min
 Response: 6853184
 Conc: 47.25 ng/ml



#43 AR-1268-3

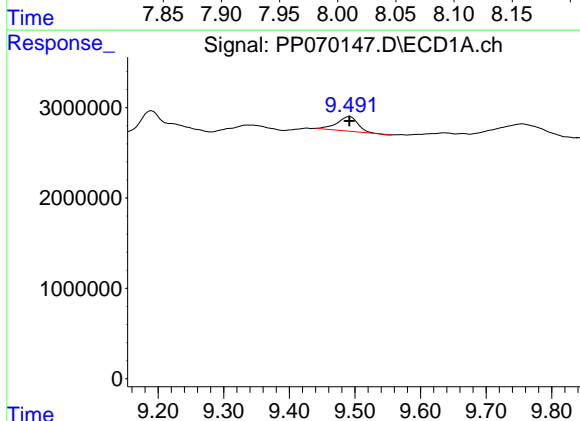
R.T.: 0.000 min
 Exp R.T.: 9.073 min
 Response: 0
 Conc: N.D.

Instrument :
 ECD_P
 ClientSampleId :
 ST-OILY-DEBRIS



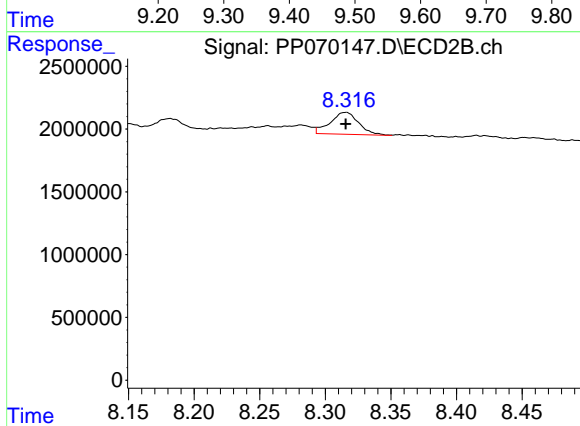
#43 AR-1268-3

R.T.: 8.019 min
 Delta R.T.: -0.003 min
 Response: 656796
 Conc: 5.36 ng/ml



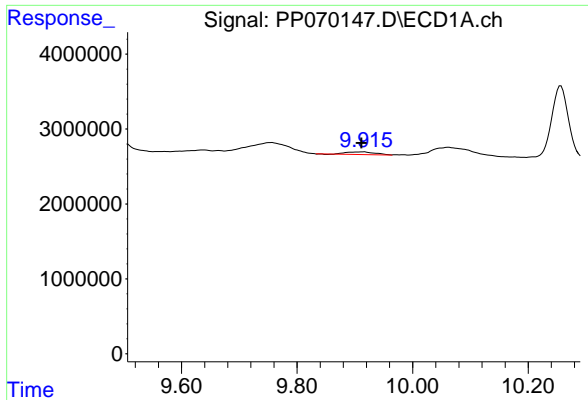
#44 AR-1268-4

R.T.: 9.492 min
 Delta R.T.: 0.000 min
 Response: 3583821
 Conc: 56.84 ng/ml



#44 AR-1268-4

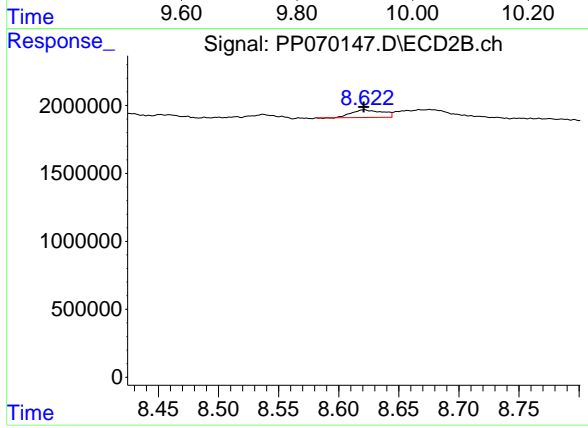
R.T.: 8.316 min
 Delta R.T.: 0.000 min
 Response: 2623615
 Conc: 49.33 ng/ml



#45 AR-1268-5

R.T.: 9.916 min
 Delta R.T.: 0.004 min
 Response: 1193368
 Conc: 2.87 ng/ml

Instrument :
 ECD_P
 ClientSampleId :
 ST-OILY-DEBRIS



#45 AR-1268-5

R.T.: 8.621 min
 Delta R.T.: 0.000 min
 Response: 1011290
 Conc: 2.85 ng/ml