

Data Path : Z:\pestpcbsrv\HPCHEM1\ECD_P\Data\PP030121\
 Data File : PP033618.D
 Signal(s) : Signal #1: ECD1A.CH Signal #2: ECD2B.CH
 Acq On : 01 Mar 2021 13:13
 Operator : DD\AJ
 Sample : M1486-07
 Misc :
 ALS Vial : 12 Sample Multiplier: 1

Instrument :
 ECD_P
 ClientSampled :

Integration File signal 1: autoint1.e
 Integration File signal 2: autoint2.e
 Quant Time: Mar 01 14:47:08 2021
 Quant Method : Z:\pestpcbsrv\HPCHEM1\ECD_P\methods\PP022121.M
 Quant Title : GC EXTRACTABLES
 QLast Update : Mon Feb 22 12:13:48 2021
 Response via : Initial Calibration
 Integrator: ChemStation 6890 Scale Mode: Small noise peaks clipped

Volume Inj. : 2 µl
 Signal #1 Phase : ZB-MR1 Signal #2 Phase: ZB-MR2
 Signal #1 Info : 30Mx0.32mmx 0.50µ Signal #2 Info : 30M x 0.32mm x 0.25µm

Compound	RT#1	RT#2	Resp#1	Resp#2	ng/ml	ng/ml

System Monitoring Compounds						
1) SA Tetrachlo...	4.722	3.992	1069403	617894	14.530	14.031
2) SA Decachlor...	10.536	9.248	492086	283014	10.580	8.957
Target Compounds						
3) L1 AR-1016-1	5.996f	5.236	128402	24334	67.086	20.717 #
4) L1 AR-1016-2	6.050	5.253	125809	25951	42.866	14.542 #
5) L1 AR-1016-3	6.110	5.445	33363	18661	19.062	19.377
6) L1 AR-1016-4	6.203	5.508	399047	184543	267.811	246.757
7) L1 AR-1016-5	6.523	0.000	27985	0	20.069	N.D. #
8) L2 AR-1221-1	4.971	0.000	349234	0	518.177	N.D. #
9) L2 AR-1221-2	5.081f	0.000	360264	0	708.219	N.D. #
10) L2 AR-1221-3	5.169f	4.430	565476	90984	361.408	92.460 #
11) L3 AR-1232-1	5.169f	4.430	565476	90984	425.755	111.556 #
12) L3 AR-1232-2	5.725	5.253	577600	25951	895.421	33.990 #
13) L3 AR-1232-3	6.050	5.445	125809	18661	103.137	46.194 #
14) L3 AR-1232-4	6.203	0.000	399047	0	648.348	N.D. #
15) L3 AR-1232-5	6.312	0.000	104887	0	267.153	N.D. #
16) L4 AR-1242-1	5.996f	5.236	128402	24334	87.886	26.757 #
17) L4 AR-1242-2	6.050	5.253	125809	25951	56.443	19.296 #
18) L4 AR-1242-3	6.110	5.445	33363	18661	24.146	25.378
19) L4 AR-1242-4	6.203	0.000	399047	0	343.986	N.D. #
20) L4 AR-1242-5	6.990	6.120f	385136	46887	343.674	61.867 #
21) L5 AR-1248-1	5.996f	5.236	128402	24334	116.196	35.367 #
22) L5 AR-1248-2	6.312	5.508	104887	184543	68.702	186.340 #
23) L5 AR-1248-3	6.523	0.000	27985	0	15.505	N.D. #
25) L5 AR-1248-5	6.990	6.120f	385136	46887	208.917	41.672 #
26) L6 AR-1254-1	0.000	6.120f	0	46887	N.D.	25.752 #
27) L6 AR-1254-2	7.160	0.000	213644	0	69.037	N.D. #
28) L6 AR-1254-3	7.534	6.650f	45645	370720	14.958	149.848 #
29) L6 AR-1254-4	7.819	6.911	217405	140862	97.080	110.973
30) L6 AR-1254-5	8.268f	7.340	1054218	93528	449.559	44.904 #
31) L7 AR-1260-1	7.688	0.000	42788	0	18.677	N.D. #
32) L7 AR-1260-2	7.959	7.036f	202424	112474	63.584	57.166
34) L7 AR-1260-4	0.000	7.615f	0	109712	N.D.	67.724 #
35) L7 AR-1260-5	0.000	7.881	0	157530	N.D.	43.745 #
36) L8 AR-1262-1	0.000	7.340	0	93528	N.D.	83.893 #
37) L8 AR-1262-2	0.000	7.881	0	157530	N.D.	42.466 #
38) L8 AR-1262-3	9.180f	8.175	256630	63602	60.969	37.139 #
39) L8 AR-1262-4	0.000	8.244	0	64897	N.D.	22.548 #
40) L8 AR-1262-5	0.000	8.719f	0	316530	N.D.	264.250 #
41) L9 AR-1268-1	9.180f	8.175	256630	63602	32.410	13.463 #
42) L9 AR-1268-2	0.000	8.244	0	64897	N.D.	14.490 #
43) L9 AR-1268-3	9.466	0.000	666329	0	102.501	N.D. #

Data Path : Z:\pestpcbsrv\HPCHEM1\ECD_P\Data\PP030121\
 Data File : PP033618.D
 Signal(s) : Signal #1: ECD1A.CH Signal #2: ECD2B.CH
 Acq On : 01 Mar 2021 13:13
 Operator : DD\AJ
 Sample : M1486-07
 Misc :
 ALS Vial : 12 Sample Multiplier: 1

Instrument :
 ECD_P
 ClientSampleId :

Integration File signal 1: autoint1.e
 Integration File signal 2: autoint2.e
 Quant Time: Mar 01 14:47:08 2021
 Quant Method : Z:\pestpcbsrv\HPCHEM1\ECD_P\methods\PP022121.M
 Quant Title : GC EXTRACTABLES
 QLast Update : Mon Feb 22 12:13:48 2021
 Response via : Initial Calibration
 Integrator: ChemStation 6890 Scale Mode: Small noise peaks clipped

Volume Inj. : 2 µl
 Signal #1 Phase : ZB-MR1 Signal #2 Phase: ZB-MR2
 Signal #1 Info : 30Mx0.32mmx 0.50µ Signal #2 Info : 30M x 0.32mm x 0.25µm

	Compound	RT#1	RT#2	Resp#1	Resp#2	ng/ml	ng/ml
44)	L9 AR-1268-4	0.000	8.719f	0	316530	N.D.	229.457 #

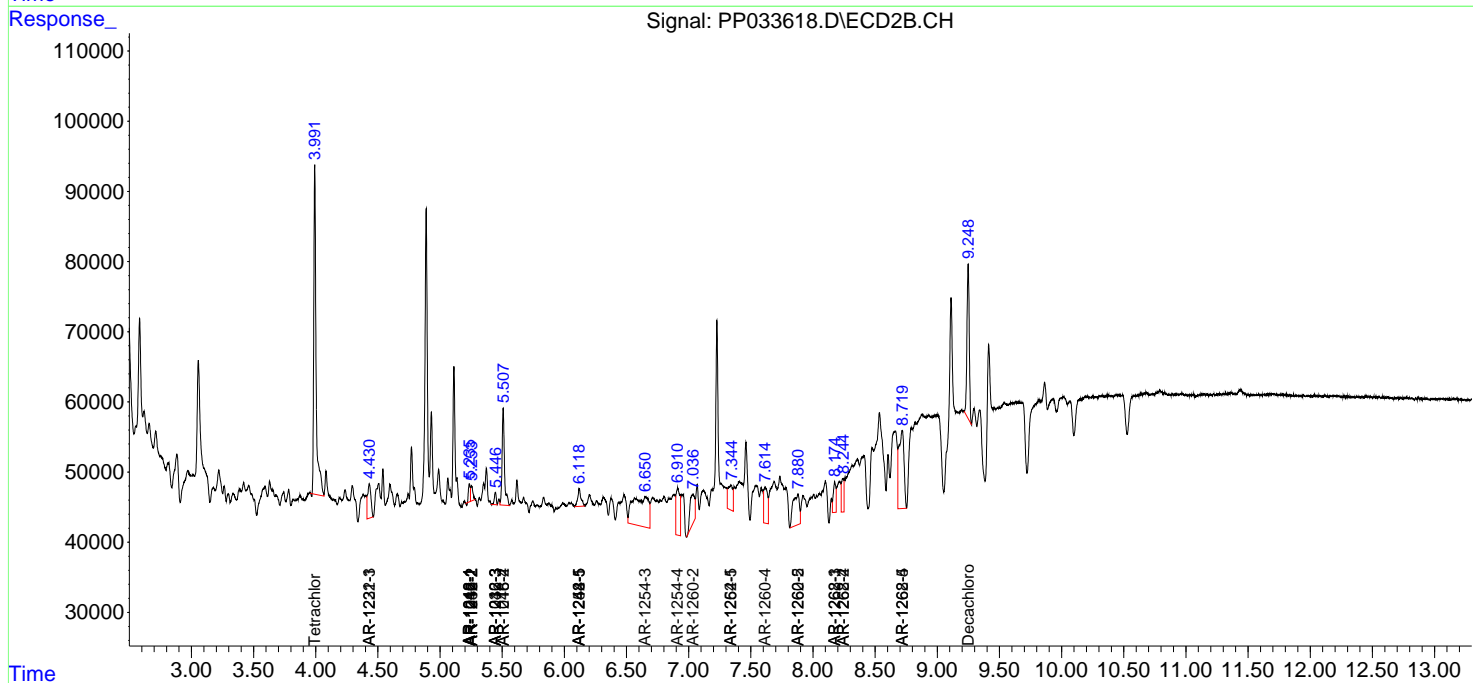
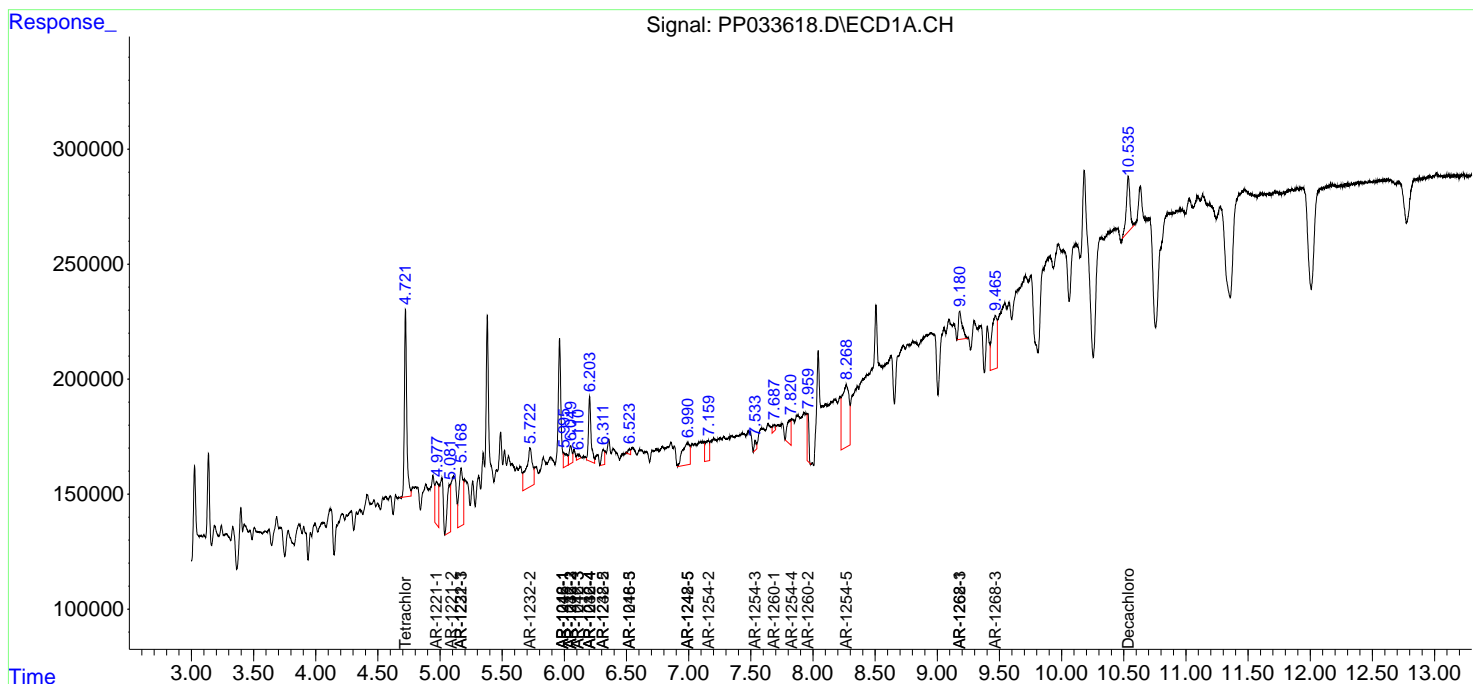
(f)=RT Delta > 1/2 Window (#)=Amounts differ by > 25% (m)=manual int.

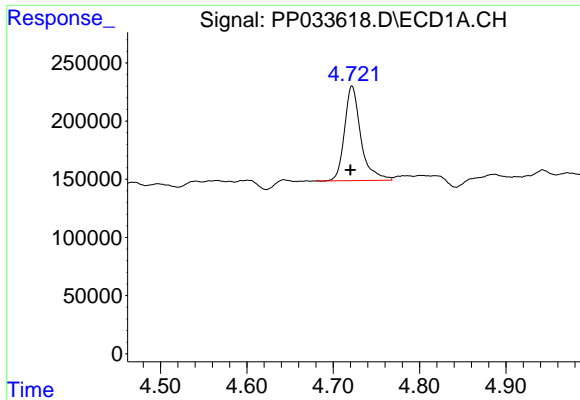
Data Path : Z:\pestpcbsrv\HPCHEM1\ECD_P\Data\PP030121\
 Data File : PP033618.D
 Signal(s) : Signal #1: ECD1A.CH Signal #2: ECD2B.CH
 Acq On : 01 Mar 2021 13:13
 Operator : DD\AJ
 Sample : M1486-07
 Misc :
 ALS Vial : 12 Sample Multiplier: 1

Instrument :
 ECD_P
 ClientSampled :

Integration File signal 1: autoint1.e
 Integration File signal 2: autoint2.e
 Quant Time: Mar 01 14:47:08 2021
 Quant Method : Z:\pestpcbsrv\HPCHEM1\ECD_P\methods\PP022121.M
 Quant Title : GC EXTRACTABLES
 QLast Update : Mon Feb 22 12:13:48 2021
 Response via : Initial Calibration
 Integrator: ChemStation 6890 Scale Mode: Small noise peaks clipped

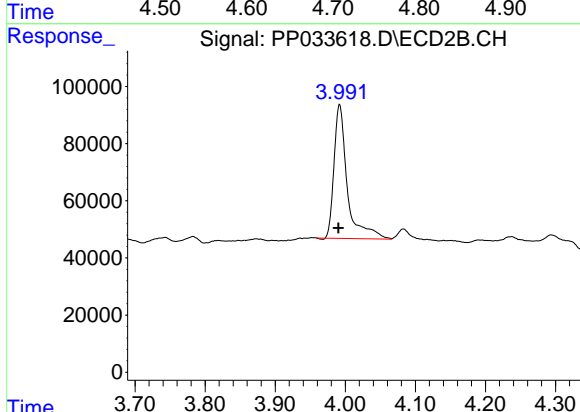
Volume Inj. : 2 µl
 Signal #1 Phase : ZB-MR1 Signal #2 Phase: ZB-MR2
 Signal #1 Info : 30Mx0.32mmx 0.50µ Signal #2 Info : 30M x 0.32mm x 0.25µm



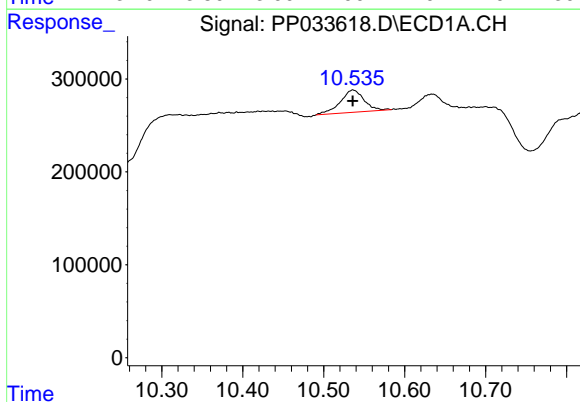


#1 Tetrachloro-m-xylene
 R.T.: 4.722 min
 Delta R.T.: 0.002 min
 Response: 1069403
 Conc: 14.53 ng/ml

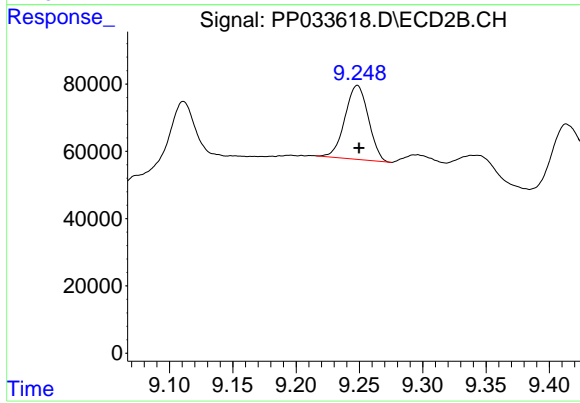
Instrument :
 ECD_P
 ClientSampled :



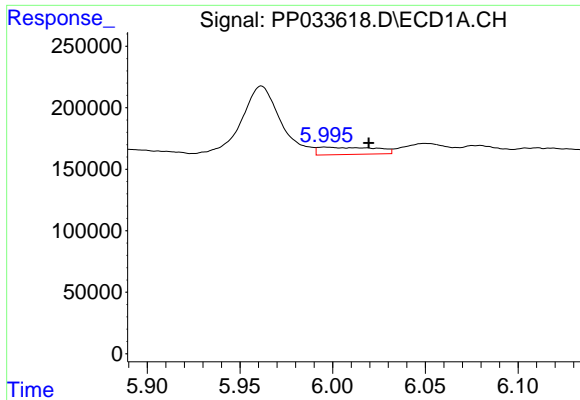
#1 Tetrachloro-m-xylene
 R.T.: 3.992 min
 Delta R.T.: 0.002 min
 Response: 617894
 Conc: 14.03 ng/ml



#2 Decachlorobiphenyl
 R.T.: 10.536 min
 Delta R.T.: 0.000 min
 Response: 492086
 Conc: 10.58 ng/ml

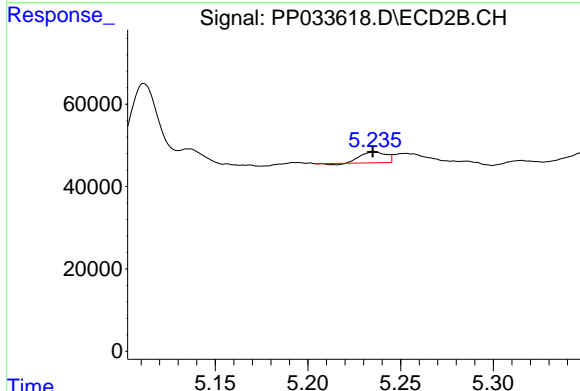


#2 Decachlorobiphenyl
 R.T.: 9.248 min
 Delta R.T.: -0.001 min
 Response: 283014
 Conc: 8.96 ng/ml

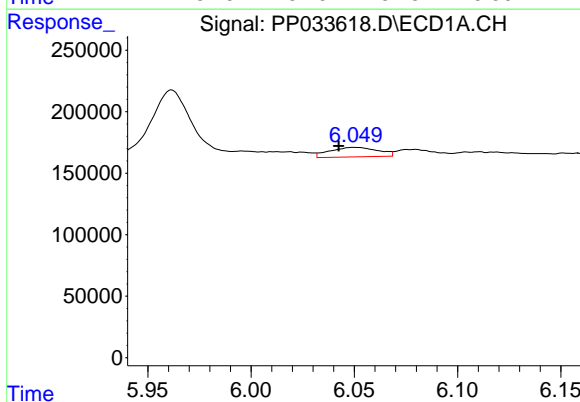


#3 AR-1016-1
 R.T.: 5.996 min
 Delta R.T.: -0.024 min
 Response: 128402
 Conc: 67.09 ng/ml

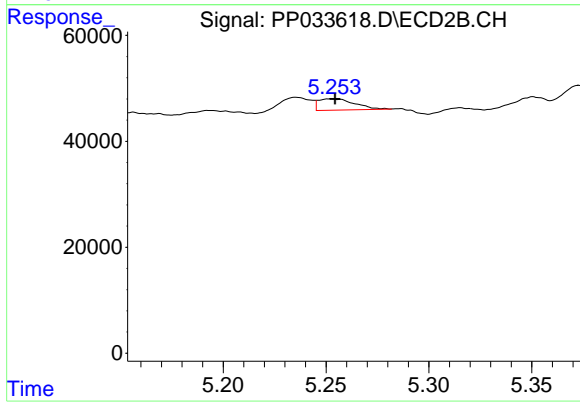
Instrument :
 ECD_P
 ClientSampled :



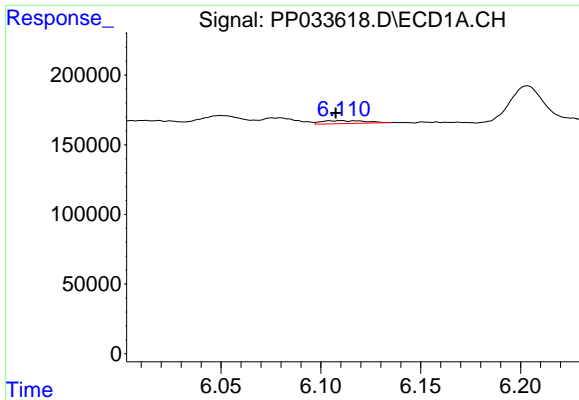
#3 AR-1016-1
 R.T.: 5.236 min
 Delta R.T.: 0.000 min
 Response: 24334
 Conc: 20.72 ng/ml



#4 AR-1016-2
 R.T.: 6.050 min
 Delta R.T.: 0.008 min
 Response: 125809
 Conc: 42.87 ng/ml

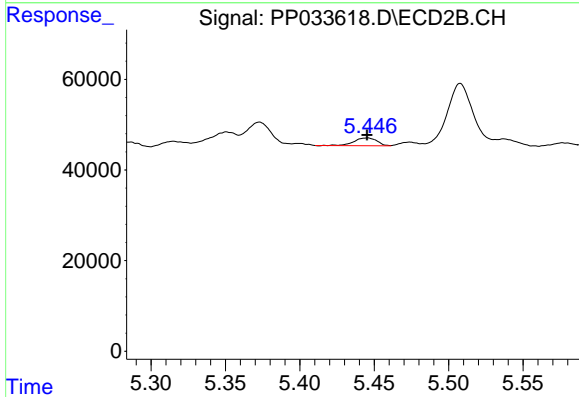


#4 AR-1016-2
 R.T.: 5.253 min
 Delta R.T.: -0.002 min
 Response: 25951
 Conc: 14.54 ng/ml

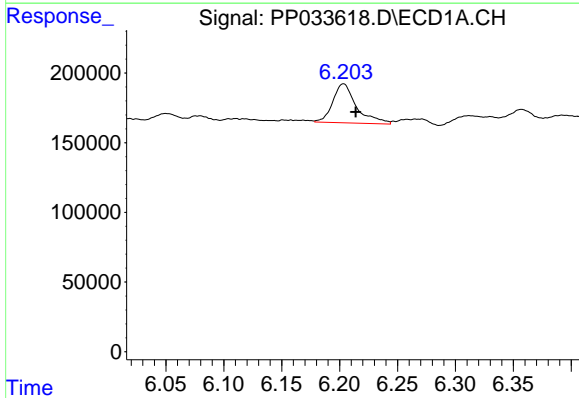


#5 AR-1016-3
 R.T.: 6.110 min
 Delta R.T.: 0.003 min
 Response: 33363
 Conc: 19.06 ng/ml

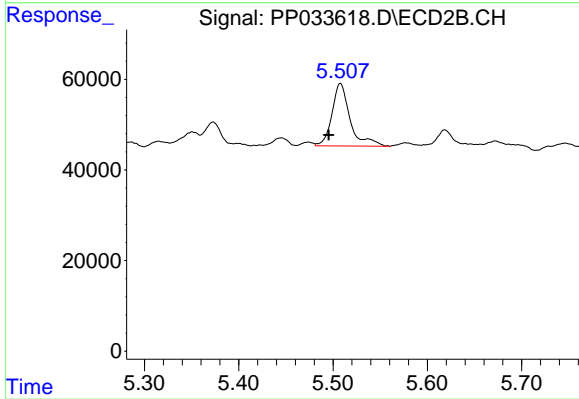
Instrument :
 ECD_P
 ClientSampleId :



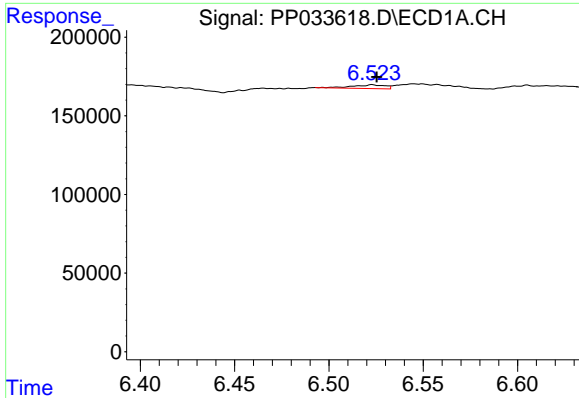
#5 AR-1016-3
 R.T.: 5.445 min
 Delta R.T.: 0.000 min
 Response: 18661
 Conc: 19.38 ng/ml



#6 AR-1016-4
 R.T.: 6.203 min
 Delta R.T.: -0.011 min
 Response: 399047
 Conc: 267.81 ng/ml

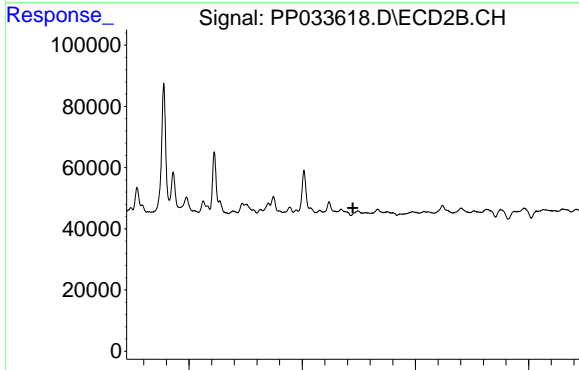


#6 AR-1016-4
 R.T.: 5.508 min
 Delta R.T.: 0.012 min
 Response: 184543
 Conc: 246.76 ng/ml

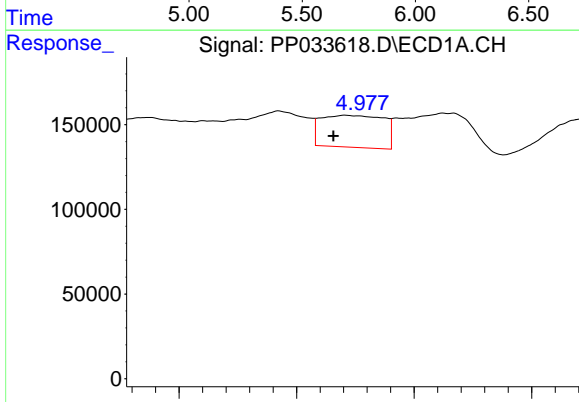


#7 AR-1016-5
 R.T.: 6.523 min
 Delta R.T.: -0.002 min
 Response: 27985
 Conc: 20.07 ng/ml

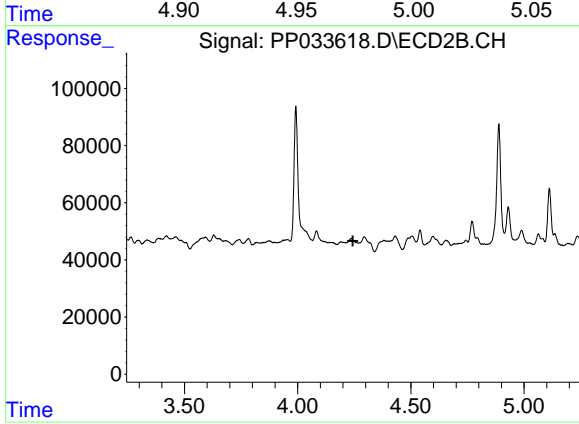
Instrument :
 ECD_P
 ClientSampleId :



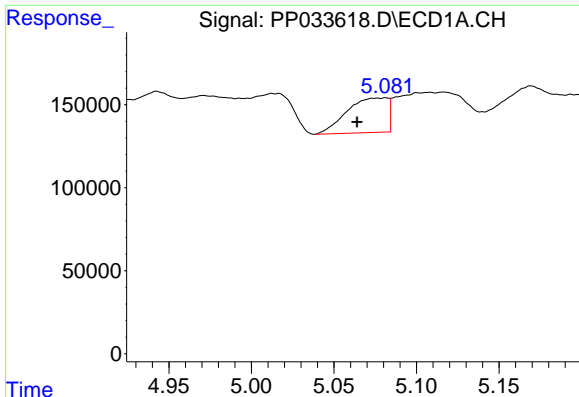
#7 AR-1016-5
 R.T.: 0.000 min
 Exp R.T. : 5.724 min
 Response: 0
 Conc: N.D.



#8 AR-1221-1
 R.T.: 4.971 min
 Delta R.T.: 0.005 min
 Response: 349234
 Conc: 518.18 ng/ml



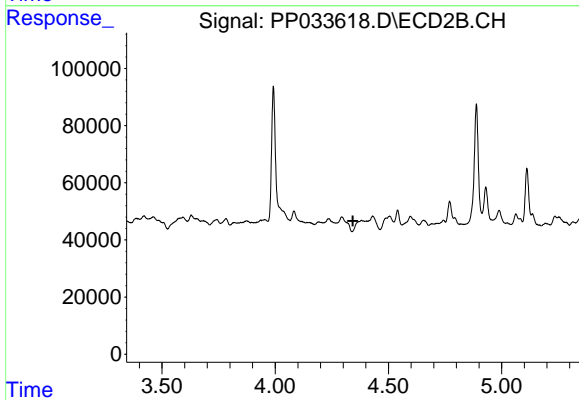
#8 AR-1221-1
 R.T.: 0.000 min
 Exp R.T. : 4.244 min
 Response: 0
 Conc: N.D.



#9 AR-1221-2

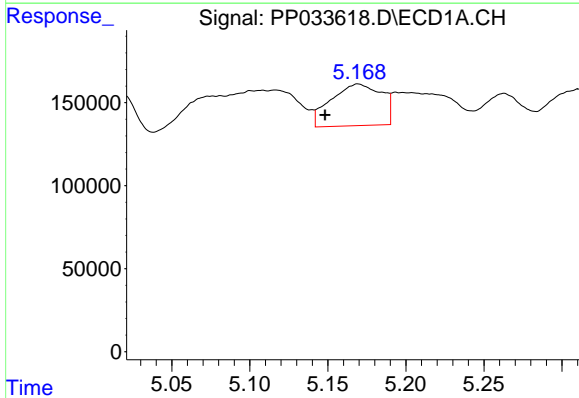
R.T.: 5.081 min
 Delta R.T.: 0.017 min
 Response: 360264
 Conc: 708.22 ng/ml

Instrument :
 ECD_P
 ClientSampleId :



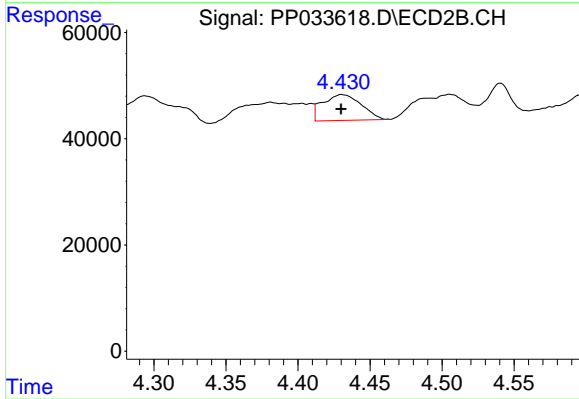
#9 AR-1221-2

R.T.: 0.000 min
 Exp R.T. : 4.343 min
 Response: 0
 Conc: N.D.



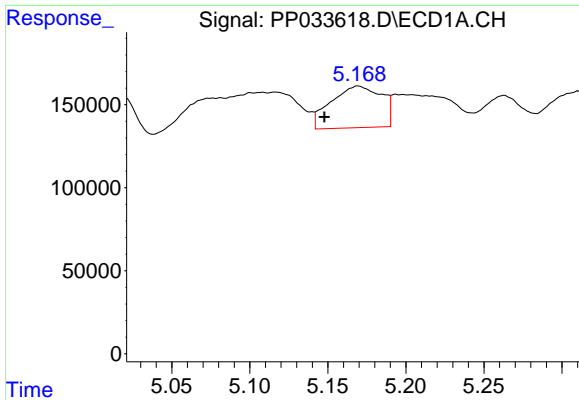
#10 AR-1221-3

R.T.: 5.169 min
 Delta R.T.: 0.021 min
 Response: 565476
 Conc: 361.41 ng/ml



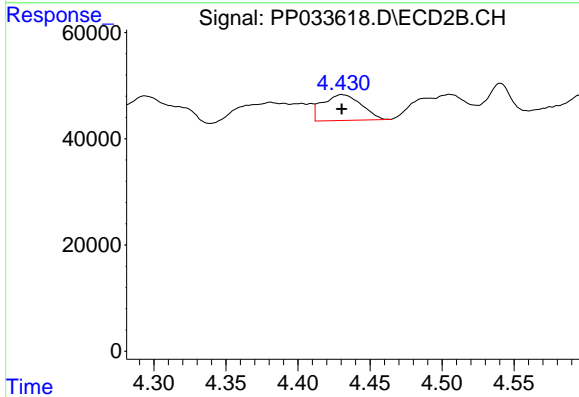
#10 AR-1221-3

R.T.: 4.430 min
 Delta R.T.: 0.000 min
 Response: 90984
 Conc: 92.46 ng/ml

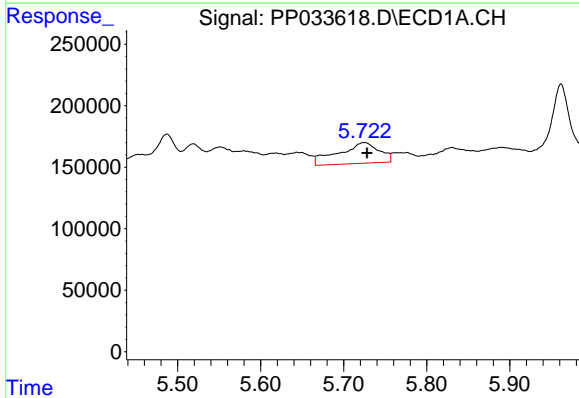


#11 AR-1232-1
 R.T.: 5.169 min
 Delta R.T.: 0.021 min
 Response: 565476
 Conc: 425.76 ng/ml

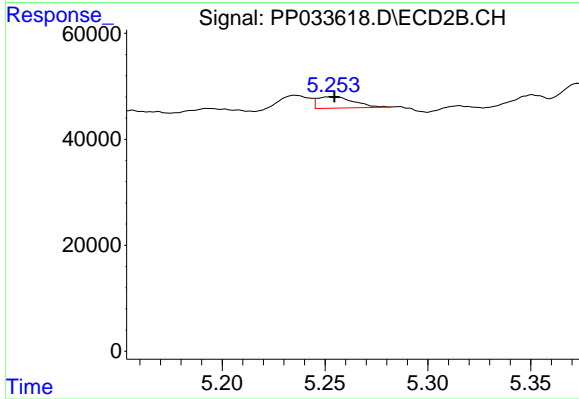
Instrument :
 ECD_P
 ClientSampleId :



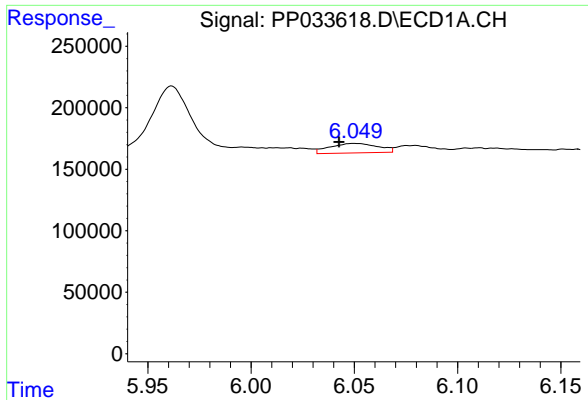
#11 AR-1232-1
 R.T.: 4.430 min
 Delta R.T.: 0.000 min
 Response: 90984
 Conc: 111.56 ng/ml



#12 AR-1232-2
 R.T.: 5.725 min
 Delta R.T.: -0.004 min
 Response: 577600
 Conc: 895.42 ng/ml

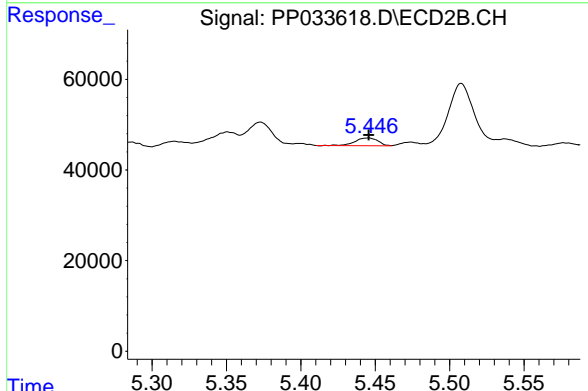


#12 AR-1232-2
 R.T.: 5.253 min
 Delta R.T.: -0.002 min
 Response: 25951
 Conc: 33.99 ng/ml

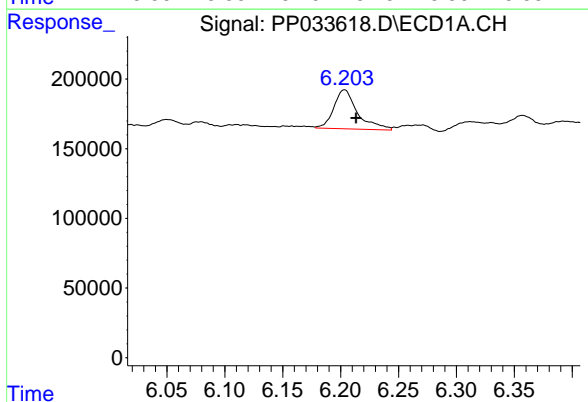


#13 AR-1232-3
 R.T.: 6.050 min
 Delta R.T.: 0.008 min
 Response: 125809
 Conc: 103.14 ng/ml

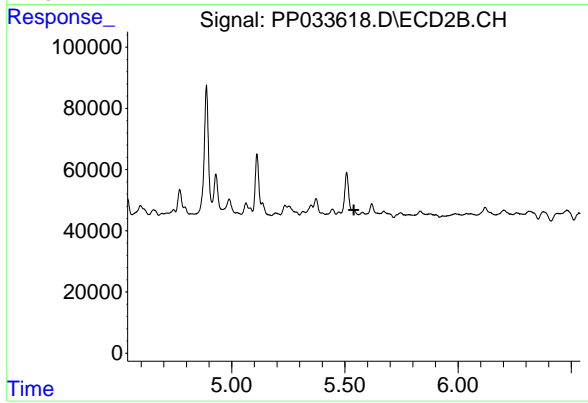
Instrument :
 ECD_P
 ClientSampleId :



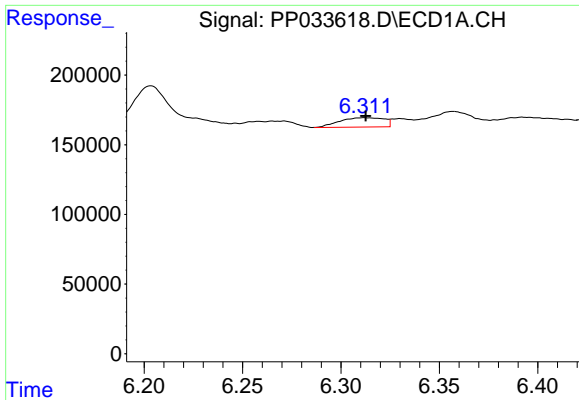
#13 AR-1232-3
 R.T.: 5.445 min
 Delta R.T.: 0.000 min
 Response: 18661
 Conc: 46.19 ng/ml



#14 AR-1232-4
 R.T.: 6.203 min
 Delta R.T.: -0.010 min
 Response: 399047
 Conc: 648.35 ng/ml

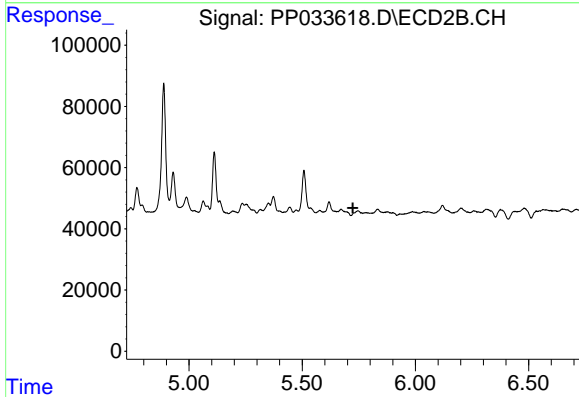


#14 AR-1232-4
 R.T.: 0.000 min
 Exp R.T. : 5.540 min
 Response: 0
 Conc: N.D.

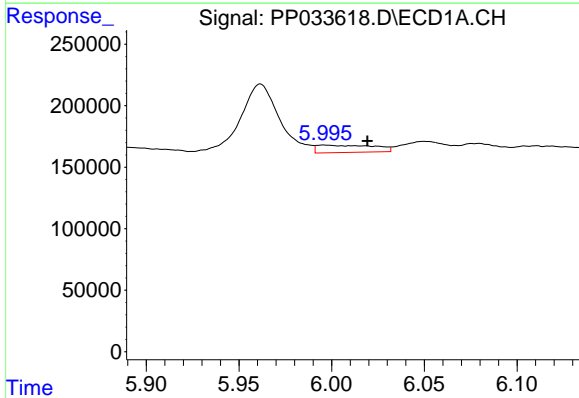


#15 AR-1232-5
 R.T.: 6.312 min
 Delta R.T.: 0.000 min
 Response: 104887
 Conc: 267.15 ng/ml

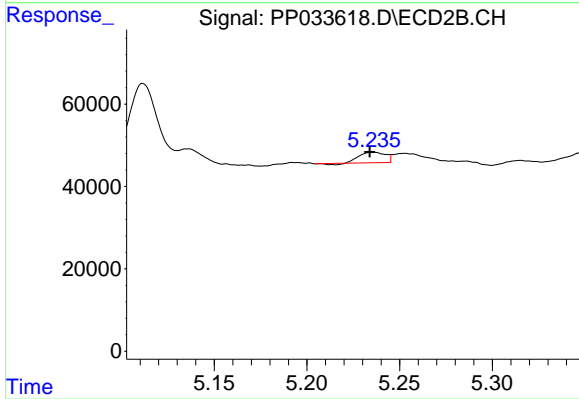
Instrument :
 ECD_P
 ClientSampled :



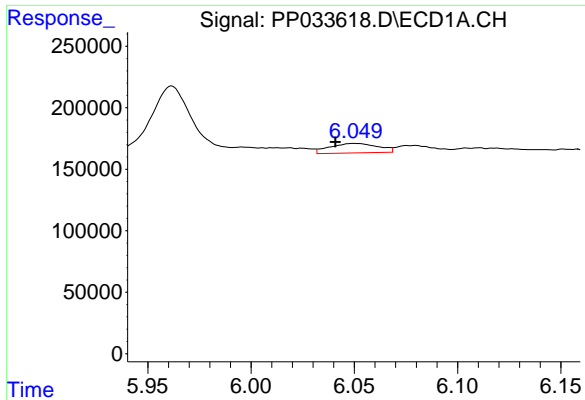
#15 AR-1232-5
 R.T.: 0.000 min
 Exp R.T. : 5.724 min
 Response: 0
 Conc: N.D.



#16 AR-1242-1
 R.T.: 5.996 min
 Delta R.T.: -0.023 min
 Response: 128402
 Conc: 87.89 ng/ml



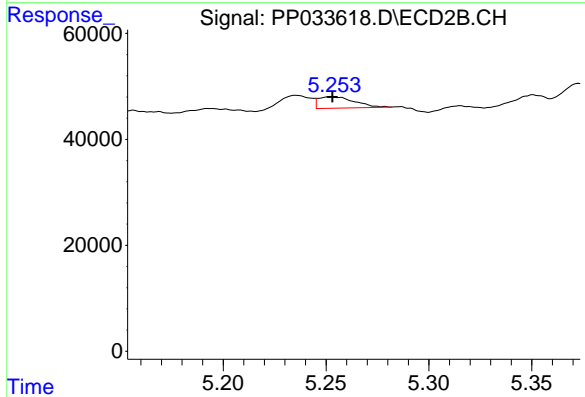
#16 AR-1242-1
 R.T.: 5.236 min
 Delta R.T.: 0.002 min
 Response: 24334
 Conc: 26.76 ng/ml



#17 AR-1242-2

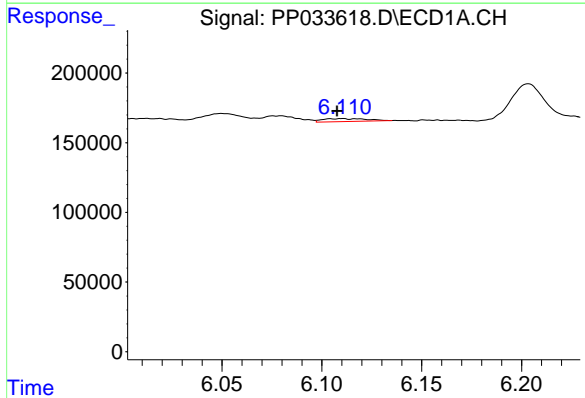
R.T.: 6.050 min
 Delta R.T.: 0.010 min
 Response: 125809
 Conc: 56.44 ng/ml

Instrument :
 ECD_P
 ClientSampled :



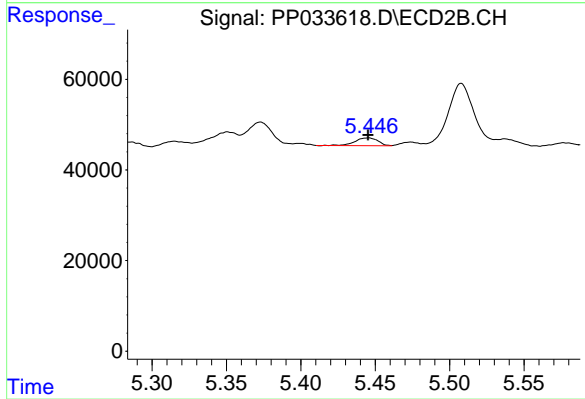
#17 AR-1242-2

R.T.: 5.253 min
 Delta R.T.: 0.000 min
 Response: 25951
 Conc: 19.30 ng/ml



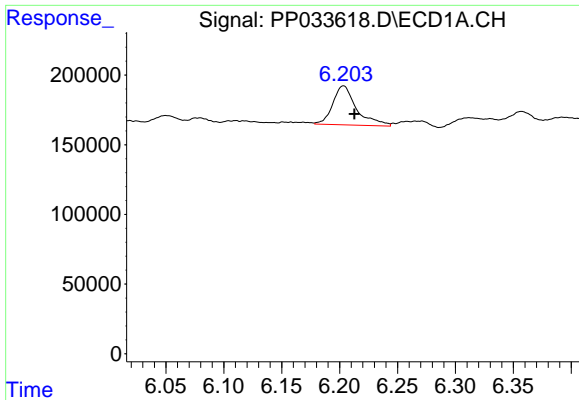
#18 AR-1242-3

R.T.: 6.110 min
 Delta R.T.: 0.003 min
 Response: 33363
 Conc: 24.15 ng/ml



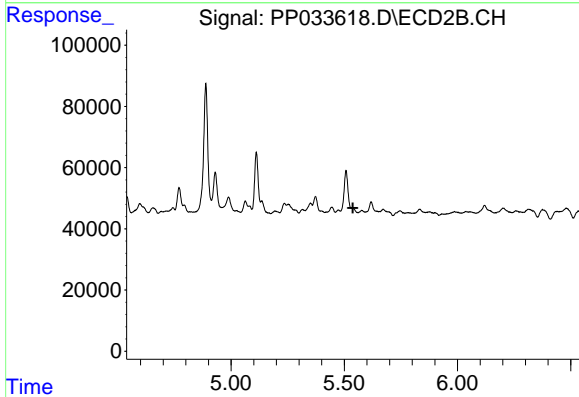
#18 AR-1242-3

R.T.: 5.445 min
 Delta R.T.: 0.000 min
 Response: 18661
 Conc: 25.38 ng/ml

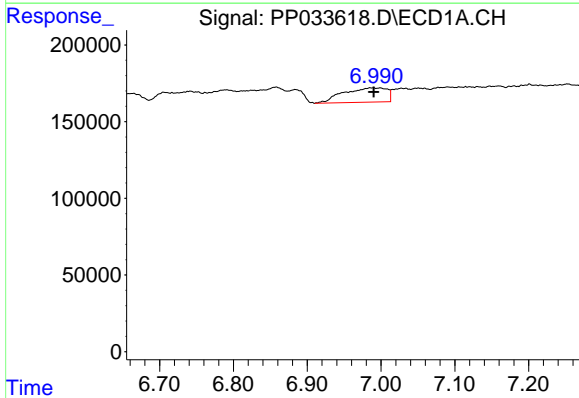


#19 AR-1242-4
 R.T.: 6.203 min
 Delta R.T.: -0.009 min
 Response: 399047
 Conc: 343.99 ng/ml

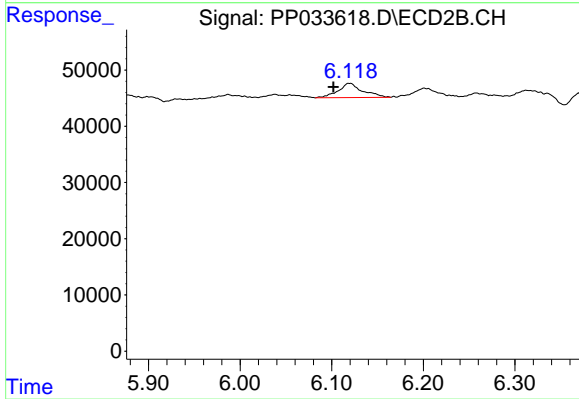
Instrument :
 ECD_P
 ClientSampleId :



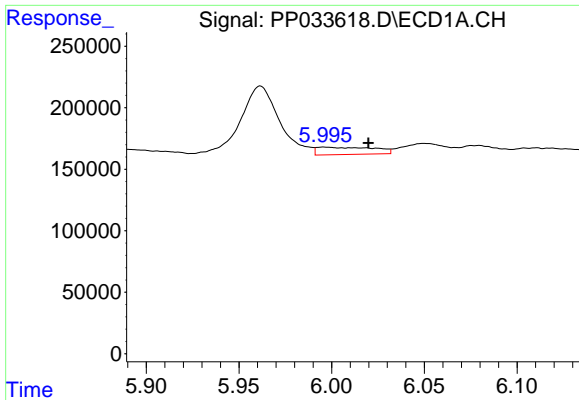
#19 AR-1242-4
 R.T.: 0.000 min
 Exp R.T. : 5.538 min
 Response: 0
 Conc: N.D.



#20 AR-1242-5
 R.T.: 6.990 min
 Delta R.T.: 0.000 min
 Response: 385136
 Conc: 343.67 ng/ml

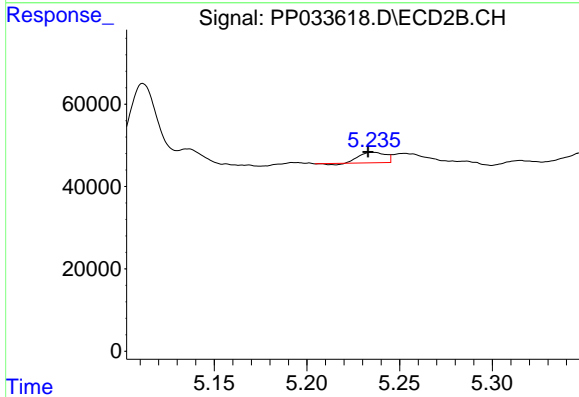


#20 AR-1242-5
 R.T.: 6.120 min
 Delta R.T.: 0.018 min
 Response: 46887
 Conc: 61.87 ng/ml

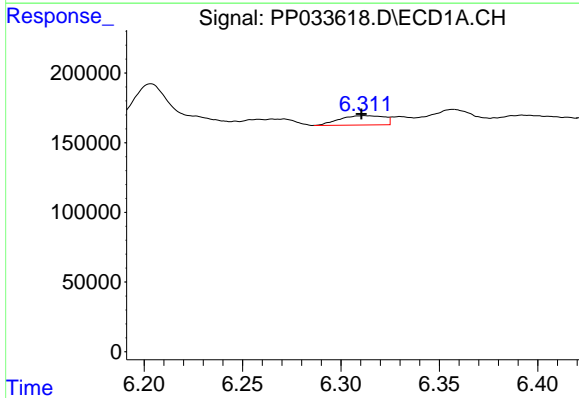


#21 AR-1248-1
 R.T.: 5.996 min
 Delta R.T.: -0.024 min
 Response: 128402
 Conc: 116.20 ng/ml

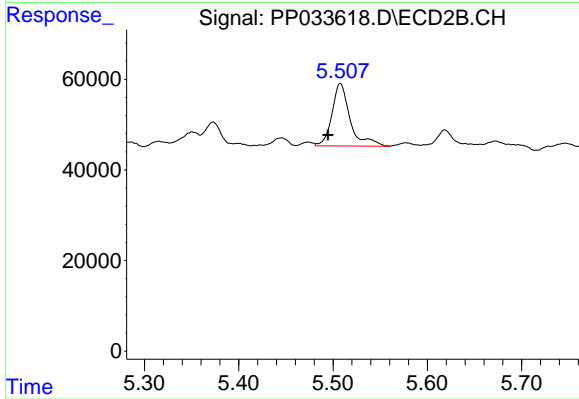
Instrument :
 ECD_P
 ClientSampled :



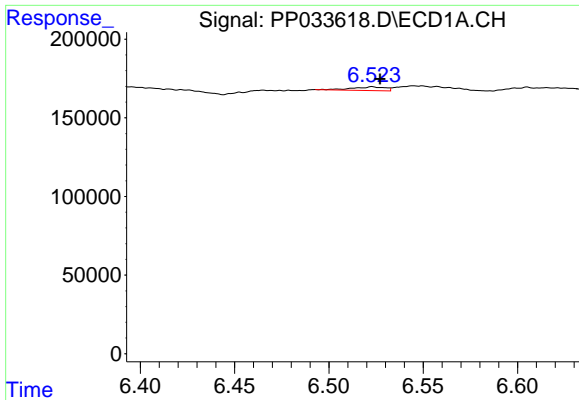
#21 AR-1248-1
 R.T.: 5.236 min
 Delta R.T.: 0.003 min
 Response: 24334
 Conc: 35.37 ng/ml



#22 AR-1248-2
 R.T.: 6.312 min
 Delta R.T.: 0.002 min
 Response: 104887
 Conc: 68.70 ng/ml



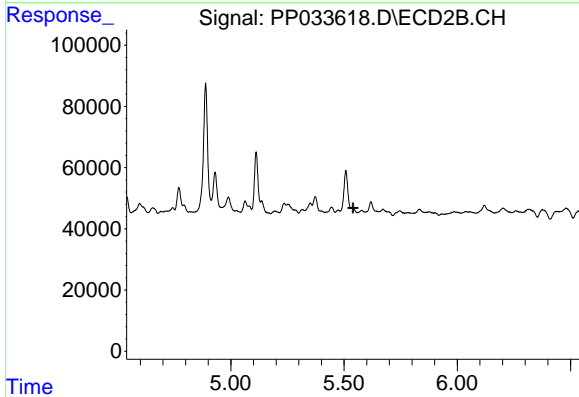
#22 AR-1248-2
 R.T.: 5.508 min
 Delta R.T.: 0.013 min
 Response: 184543
 Conc: 186.34 ng/ml



#23 AR-1248-3

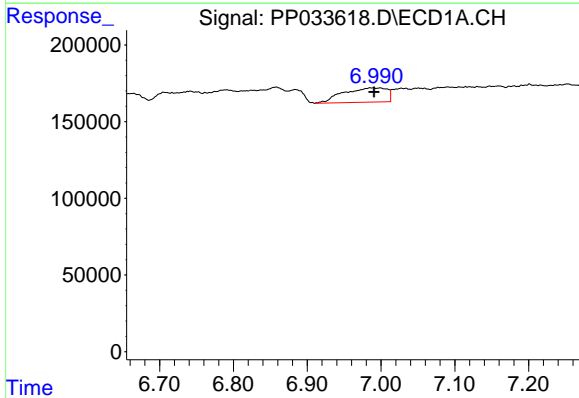
R.T.: 6.523 min
 Delta R.T.: -0.004 min
 Response: 27985
 Conc: 15.51 ng/ml

Instrument :
 ECD_P
 ClientSampleId :



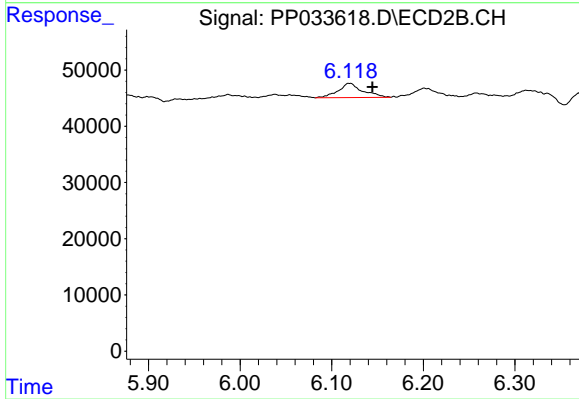
#23 AR-1248-3

R.T.: 0.000 min
 Exp R.T. : 5.539 min
 Response: 0
 Conc: N.D.



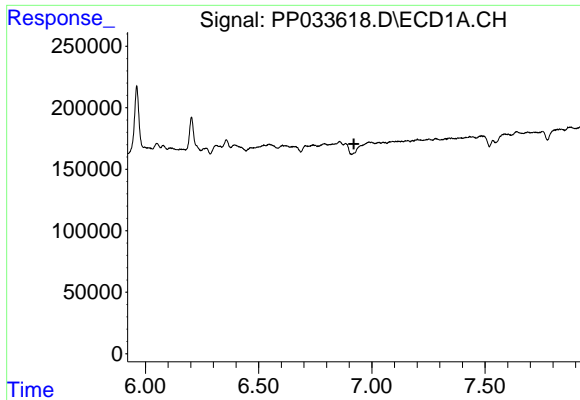
#25 AR-1248-5

R.T.: 6.990 min
 Delta R.T.: -0.001 min
 Response: 385136
 Conc: 208.92 ng/ml



#25 AR-1248-5

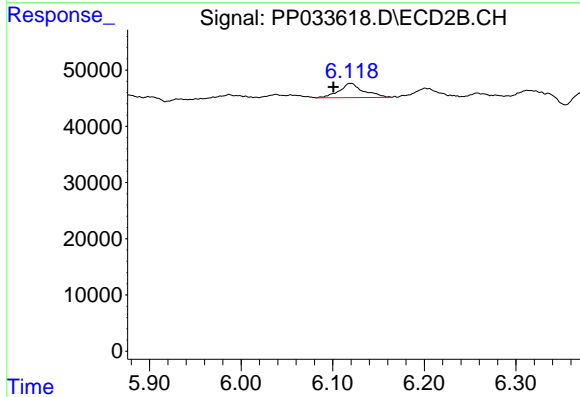
R.T.: 6.120 min
 Delta R.T.: -0.025 min
 Response: 46887
 Conc: 41.67 ng/ml



#26 AR-1254-1

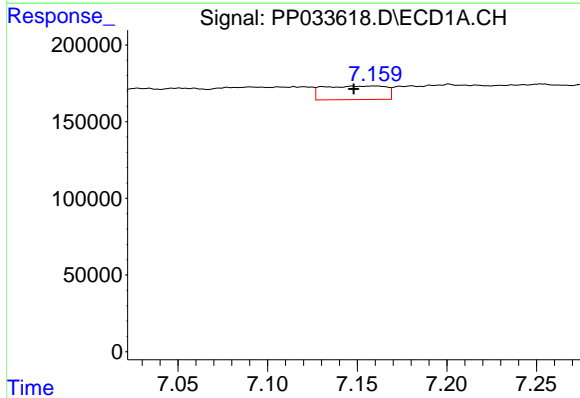
R.T.: 0.000 min
 Exp R.T.: 6.921 min
 Response: 0
 Conc: N.D.

Instrument :
 ECD_P
 ClientSampleId :



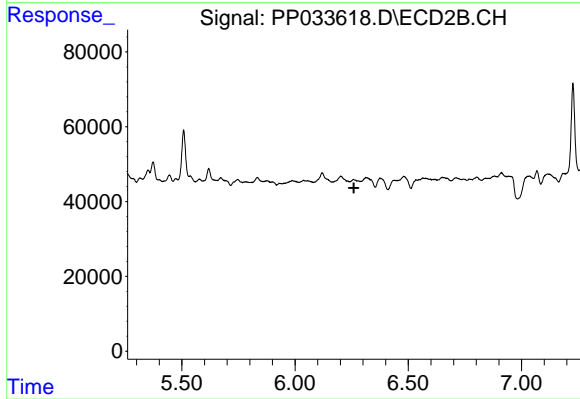
#26 AR-1254-1

R.T.: 6.120 min
 Delta R.T.: 0.019 min
 Response: 46887
 Conc: 25.75 ng/ml



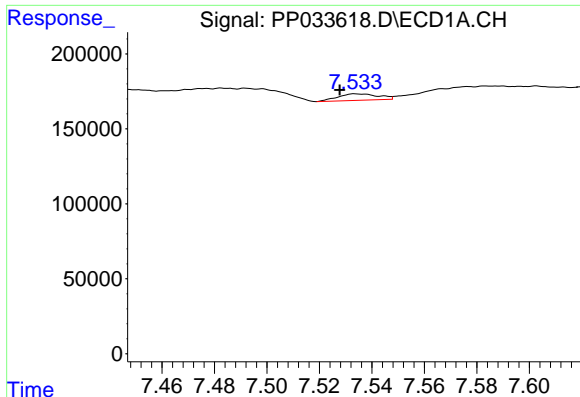
#27 AR-1254-2

R.T.: 7.160 min
 Delta R.T.: 0.011 min
 Response: 213644
 Conc: 69.04 ng/ml



#27 AR-1254-2

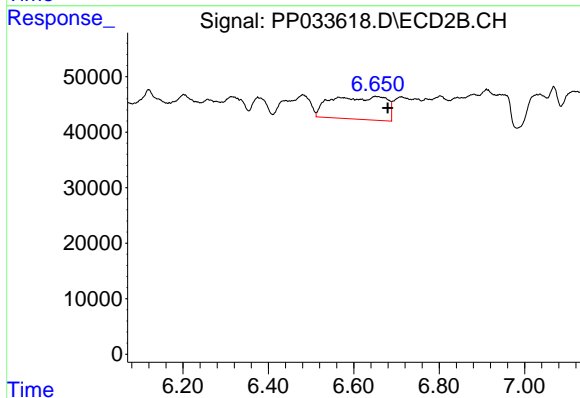
R.T.: 0.000 min
 Exp R.T.: 6.260 min
 Response: 0
 Conc: N.D.



#28 AR-1254-3

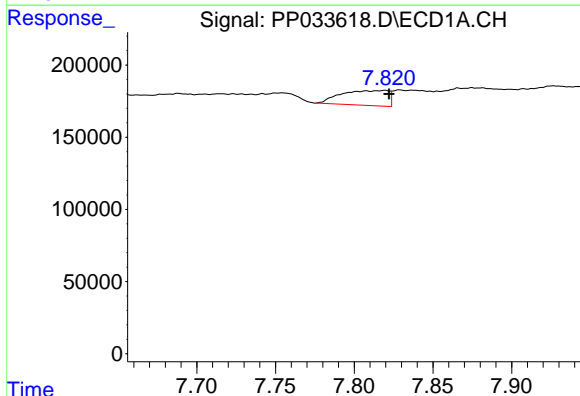
R.T.: 7.534 min
 Delta R.T.: 0.006 min
 Response: 45645
 Conc: 14.96 ng/ml

Instrument :
 ECD_P
 ClientSampleId :



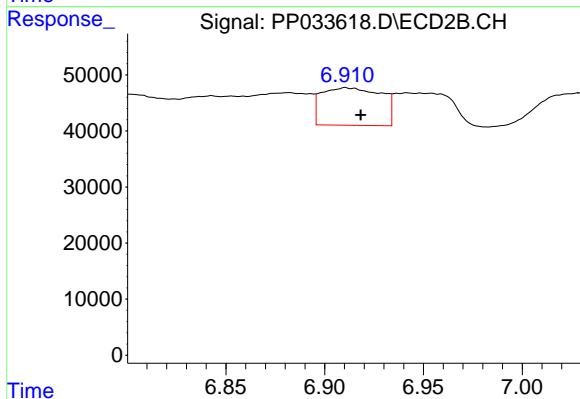
#28 AR-1254-3

R.T.: 6.650 min
 Delta R.T.: -0.029 min
 Response: 370720
 Conc: 149.85 ng/ml



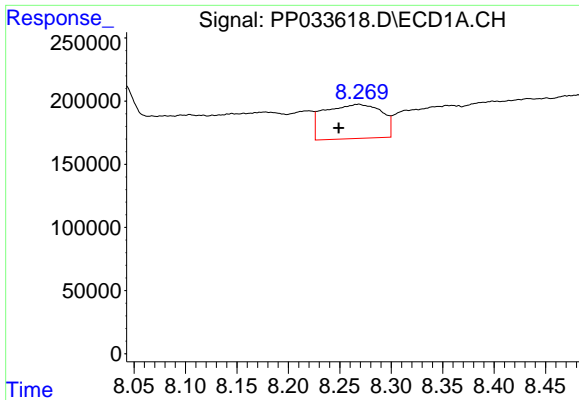
#29 AR-1254-4

R.T.: 7.819 min
 Delta R.T.: -0.003 min
 Response: 217405
 Conc: 97.08 ng/ml



#29 AR-1254-4

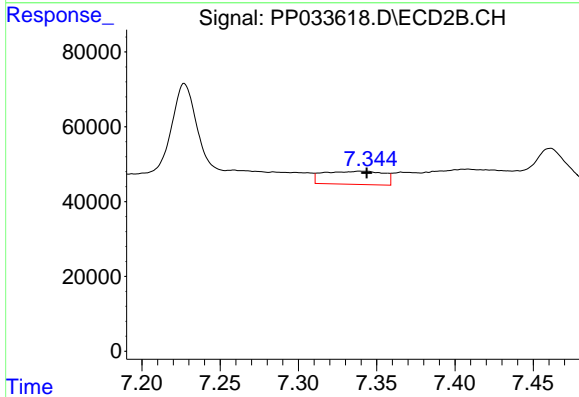
R.T.: 6.911 min
 Delta R.T.: -0.008 min
 Response: 140862
 Conc: 110.97 ng/ml



#30 AR-1254-5

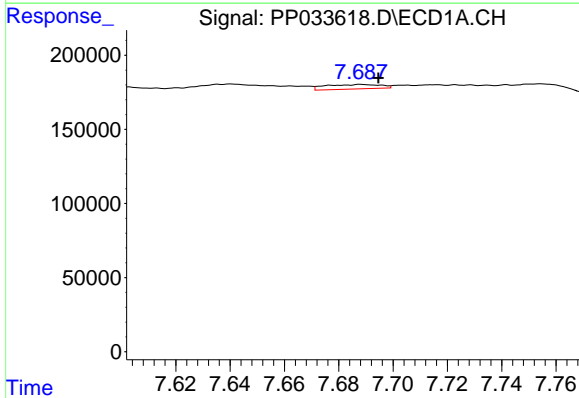
R.T.: 8.268 min
 Delta R.T.: 0.019 min
 Response: 1054218
 Conc: 449.56 ng/ml

Instrument :
 ECD_P
 ClientSampleId :



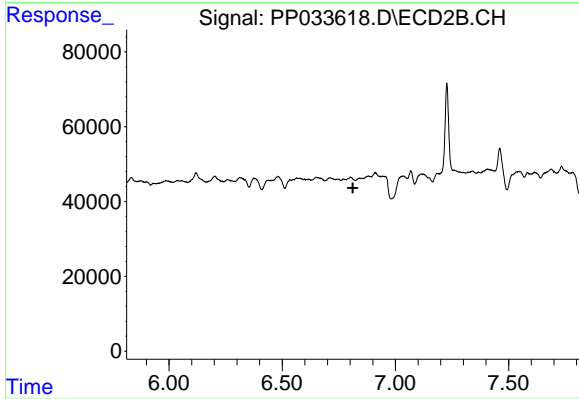
#30 AR-1254-5

R.T.: 7.340 min
 Delta R.T.: -0.004 min
 Response: 93528
 Conc: 44.90 ng/ml



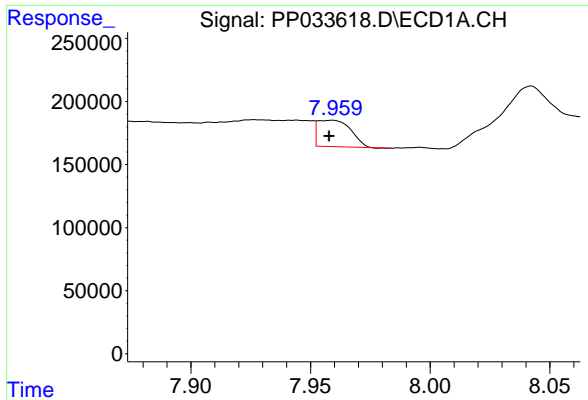
#31 AR-1260-1

R.T.: 7.688 min
 Delta R.T.: -0.006 min
 Response: 42788
 Conc: 18.68 ng/ml



#31 AR-1260-1

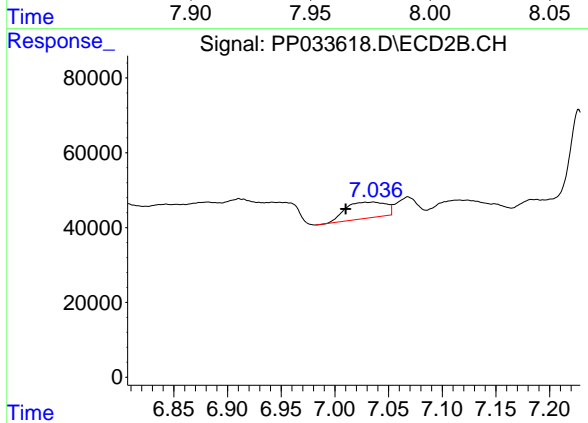
R.T.: 0.000 min
 Exp R.T. : 6.812 min
 Response: 0
 Conc: N.D.



#32 AR-1260-2

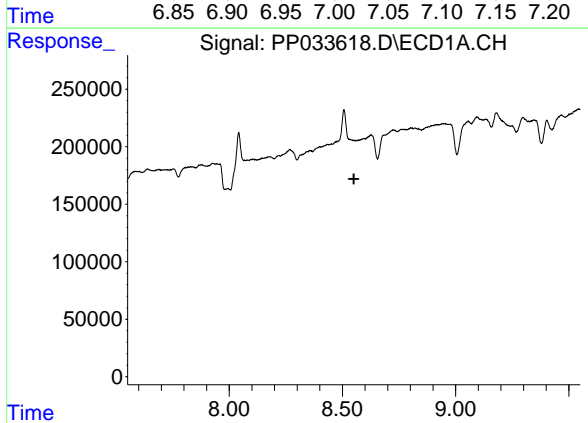
R.T.: 7.959 min
 Delta R.T.: 0.000 min
 Response: 202424
 Conc: 63.58 ng/ml

Instrument :
 ECD_P
 ClientSampled :



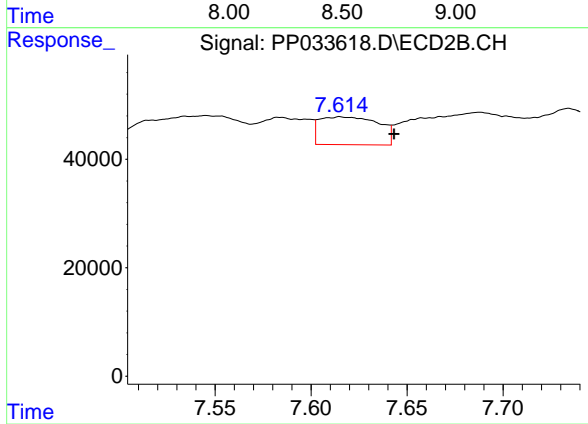
#32 AR-1260-2

R.T.: 7.036 min
 Delta R.T.: 0.026 min
 Response: 112474
 Conc: 57.17 ng/ml



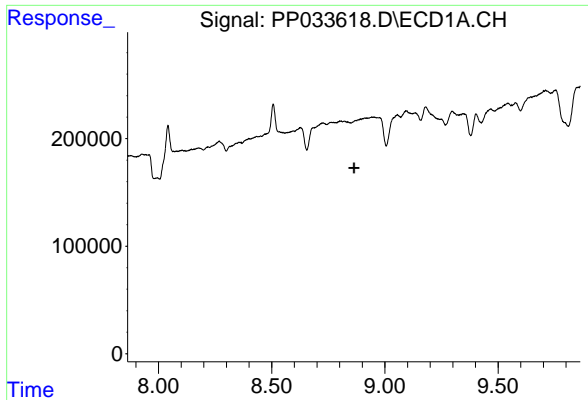
#34 AR-1260-4

R.T.: 0.000 min
 Exp R.T. : 8.550 min
 Response: 0
 Conc: N.D.



#34 AR-1260-4

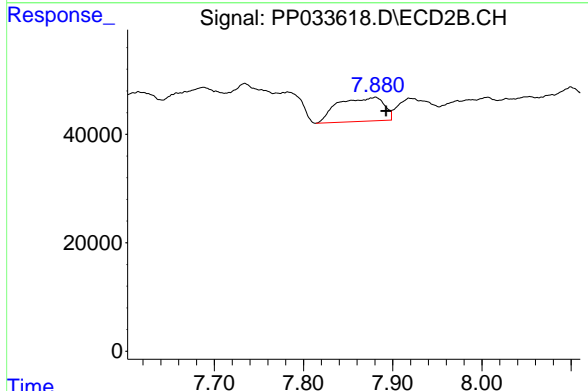
R.T.: 7.615 min
 Delta R.T.: -0.028 min
 Response: 109712
 Conc: 67.72 ng/ml



#35 AR-1260-5

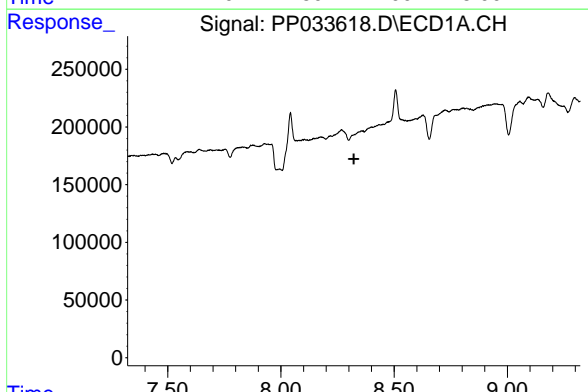
R.T.: 0.000 min
 Exp R.T. : 8.863 min
 Response: 0
 Conc: N.D.

Instrument :
 ECD_P
 ClientSampleId :



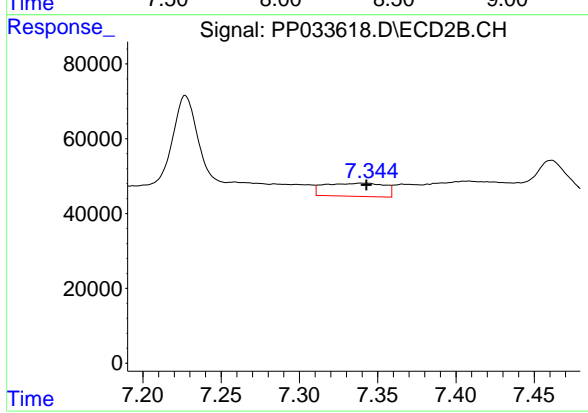
#35 AR-1260-5

R.T.: 7.881 min
 Delta R.T.: -0.012 min
 Response: 157530
 Conc: 43.75 ng/ml



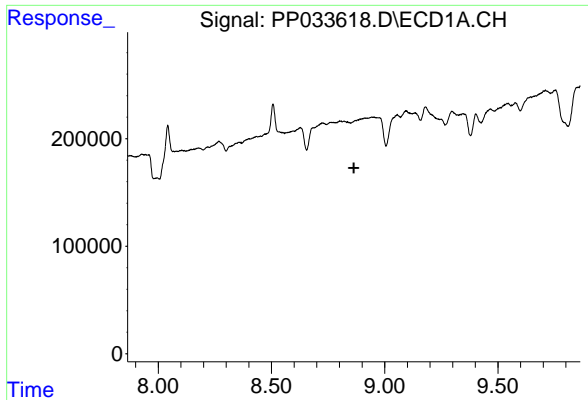
#36 AR-1262-1

R.T.: 0.000 min
 Exp R.T. : 8.322 min
 Response: 0
 Conc: N.D.



#36 AR-1262-1

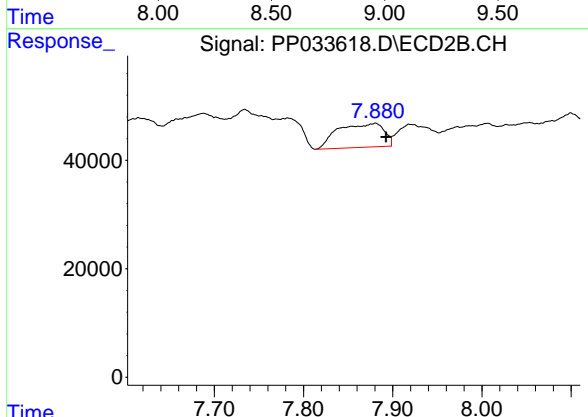
R.T.: 7.340 min
 Delta R.T.: -0.003 min
 Response: 93528
 Conc: 83.89 ng/ml



#37 AR-1262-2

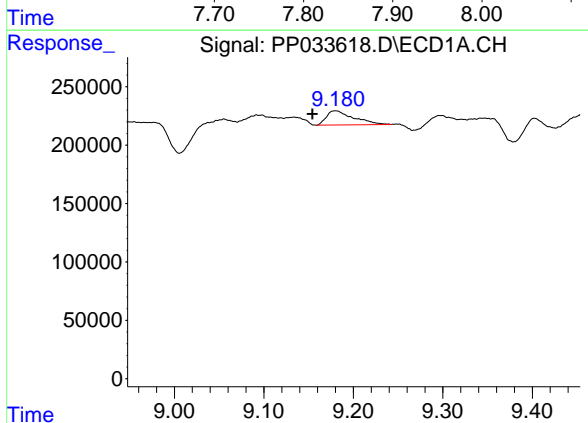
R.T.: 0.000 min
 Exp R.T.: 8.864 min
 Response: 0
 Conc: N.D.

Instrument :
 ECD_P
 ClientSampleId :



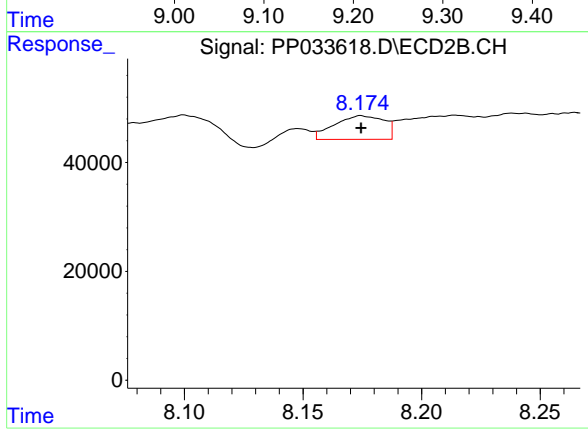
#37 AR-1262-2

R.T.: 7.881 min
 Delta R.T.: -0.012 min
 Response: 157530
 Conc: 42.47 ng/ml



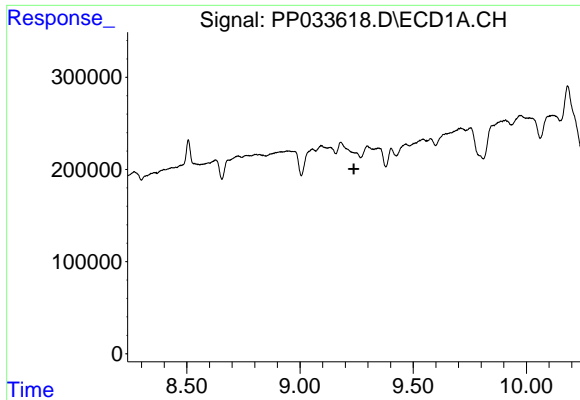
#38 AR-1262-3

R.T.: 9.180 min
 Delta R.T.: 0.026 min
 Response: 256630
 Conc: 60.97 ng/ml



#38 AR-1262-3

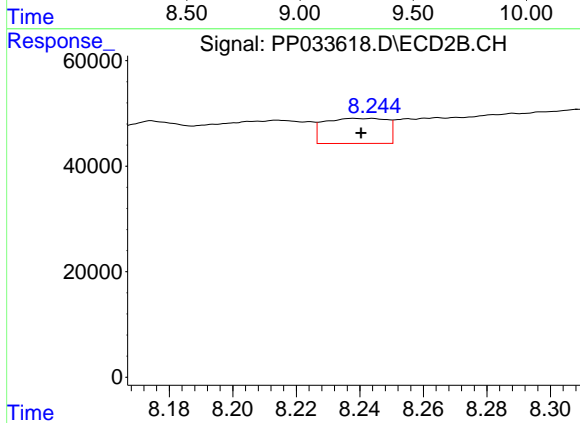
R.T.: 8.175 min
 Delta R.T.: 0.000 min
 Response: 63602
 Conc: 37.14 ng/ml



#39 AR-1262-4

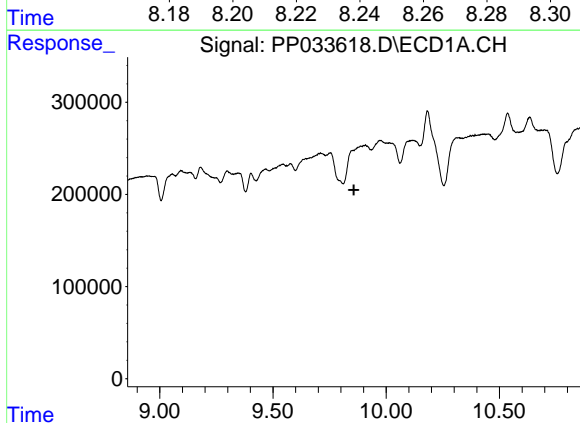
R.T.: 0.000 min
 Exp R.T. : 9.238 min
 Response: 0
 Conc: N.D.

Instrument :
 ECD_P
 ClientSampled :



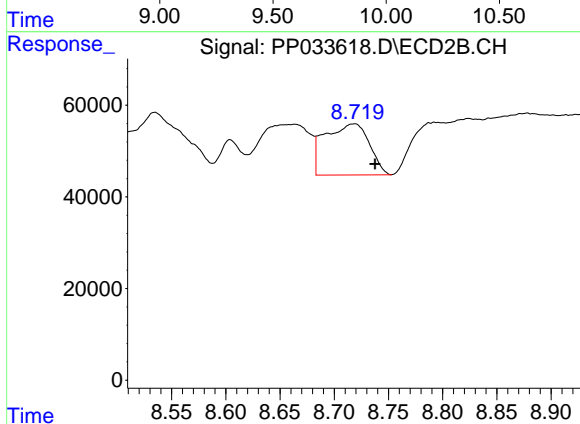
#39 AR-1262-4

R.T.: 8.244 min
 Delta R.T.: 0.003 min
 Response: 64897
 Conc: 22.55 ng/ml



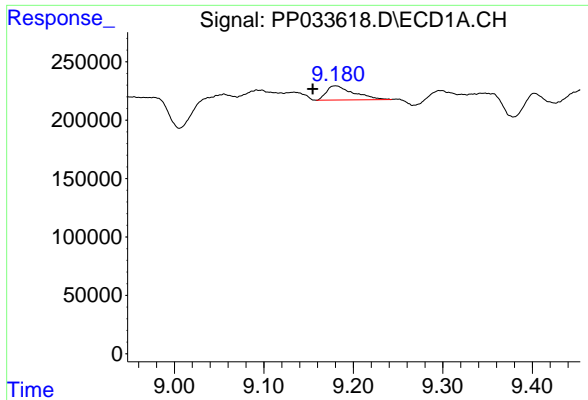
#40 AR-1262-5

R.T.: 0.000 min
 Exp R.T. : 9.857 min
 Response: 0
 Conc: N.D.



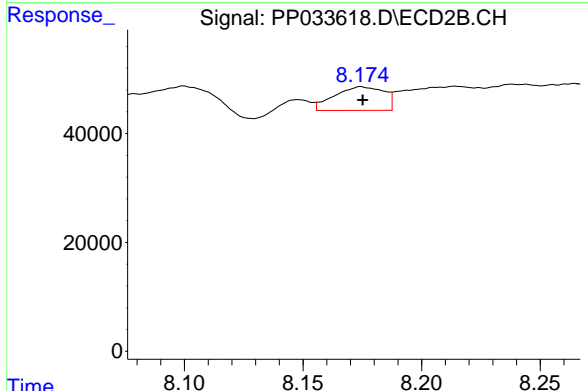
#40 AR-1262-5

R.T.: 8.719 min
 Delta R.T.: -0.019 min
 Response: 316530
 Conc: 264.25 ng/ml

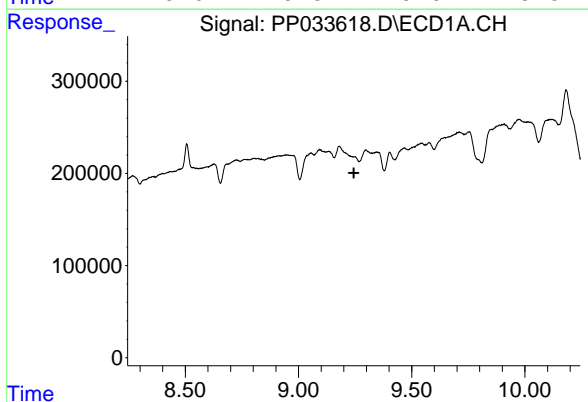


#41 AR-1268-1
 R.T.: 9.180 min
 Delta R.T.: 0.026 min
 Response: 256630
 Conc: 32.41 ng/ml

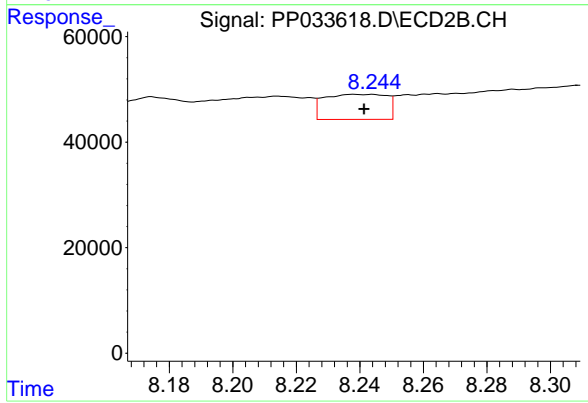
Instrument :
 ECD_P
 ClientSampled :



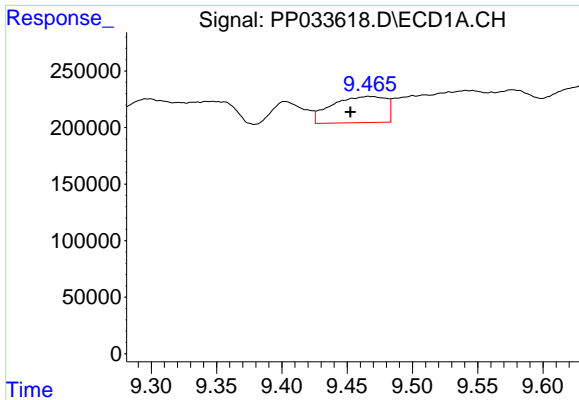
#41 AR-1268-1
 R.T.: 8.175 min
 Delta R.T.: 0.000 min
 Response: 63602
 Conc: 13.46 ng/ml



#42 AR-1268-2
 R.T.: 0.000 min
 Exp R.T. : 9.245 min
 Response: 0
 Conc: N.D.



#42 AR-1268-2
 R.T.: 8.244 min
 Delta R.T.: 0.002 min
 Response: 64897
 Conc: 14.49 ng/ml

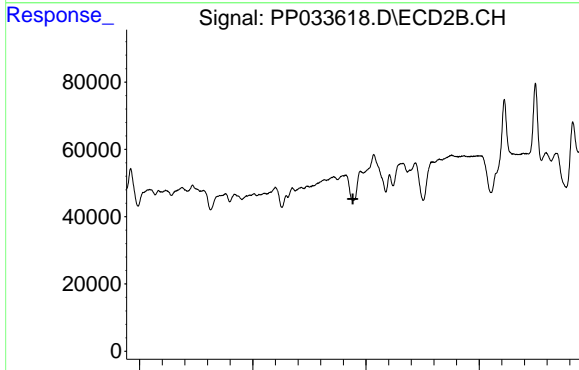


#43 AR-1268-3

R.T.: 9.466 min
 Delta R.T.: 0.014 min
 Response: 666329
 Conc: 102.50 ng/ml

Instrument :
 ECD_P
 ClientSampleId :

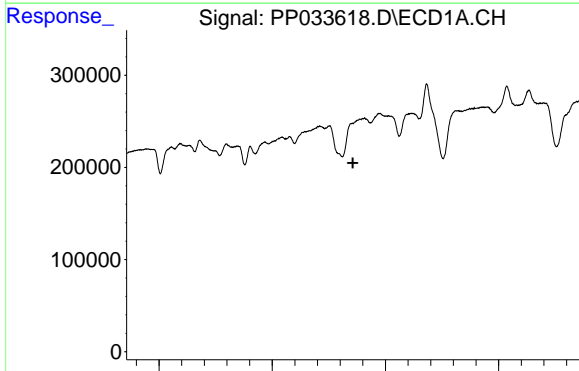
Time 9.30 9.35 9.40 9.45 9.50 9.55 9.60



#43 AR-1268-3

R.T.: 0.000 min
 Exp R.T. : 8.443 min
 Response: 0
 Conc: N.D.

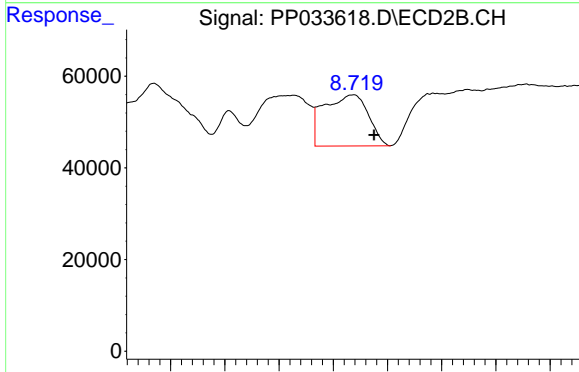
Time 7.50 8.00 8.50 9.00



#44 AR-1268-4

R.T.: 0.000 min
 Exp R.T. : 9.856 min
 Response: 0
 Conc: N.D.

Time 9.00 9.50 10.00 10.50



#44 AR-1268-4

R.T.: 8.719 min
 Delta R.T.: -0.019 min
 Response: 316530
 Conc: 229.46 ng/ml

Time 8.55 8.60 8.65 8.70 8.75 8.80 8.85 8.90