

Data Path : Z:\pestpcbsrv\HPCHEM1\ECD_P\Data\PP030122\
 Data File : PP044120.D
 Signal(s) : Signal #1: ECD1A.ch Signal #2: ECD2B.ch
 Acq On : 01 Mar 2022 13:18
 Operator : YP\AJ
 Sample : N1704-01
 Misc :
 ALS Vial : 12 Sample Multiplier: 1

Instrument :
 ECD_P
 ClientSampleId :

Integration File signal 1: autoint1.e
 Integration File signal 2: autoint2.e
 Quant Time: Mar 02 00:11:09 2022
 Quant Method : Z:\pestpcbsrv\HPCHEM1\ECD_P\methods\PP021022.M
 Quant Title : GC EXTRACTABLES
 QLast Update : Fri Feb 11 04:48:05 2022
 Response via : Initial Calibration
 Integrator: ChemStation

Volume Inj. : 2 µl
 Signal #1 Phase : ZB-MR1 Signal #2 Phase: ZB-MR2
 Signal #1 Info : 30Mx0.32mmx 0.50µ Signal #2 Info : 30M x 0.32mm x 0.25µm

Compound	RT#1	RT#2	Resp#1	Resp#2	ng/ml	ng/ml
----------	------	------	--------	--------	-------	-------

System Monitoring Compounds

1) SA Tetrachlo...	3.913	3.170	42707843	33847748	19.316	18.021
2) SA Decachlor...	10.054	8.541	28711364	30298398	24.170	18.675

Target Compounds

3) L1 AR-1016-1	5.165	4.314	3927918	887669	54.132	14.488 #
4) L1 AR-1016-2	5.191	4.334	6127689	1999009	58.099	23.660 #
5) L1 AR-1016-3	5.260	4.531	3912092	7461804	59.414	159.724 #
6) L1 AR-1016-4	5.359	4.568	4192256	23108675	77.305	618.359 #
7) L1 AR-1016-5	5.679	4.792	15083823	13905369	287.158	304.391
8) L2 AR-1221-1	4.132f	3.392	4668268	1563232	183.362	65.535 #
9) L2 AR-1221-2	4.246	3.502	13958847	1347469	727.086	74.610 #
10) L2 AR-1221-3	4.309	3.562	4840134	1013943	84.256	19.655 #
11) L3 AR-1232-1	4.309	3.562	4840134	1013943	99.731	23.566 #
12) L3 AR-1232-2	4.861f	4.334	13241635	1999009	558.786	55.998 #
13) L3 AR-1232-3	5.191	4.531	6127689	7461804	142.327	381.597 #
14) L3 AR-1232-4	5.359	4.610	4192256	7892435	192.056	456.412 #
15) L3 AR-1232-5	5.463	4.792	25417622	13905369	1575.875	740.271 #
16) L4 AR-1242-1	5.165	4.314	3927918	887669	69.902	18.209 #
17) L4 AR-1242-2	5.191	4.334	6127689	1999009	74.065	29.688 #
18) L4 AR-1242-3	5.260	4.531	3912092	7461804	75.581	198.777 #
19) L4 AR-1242-4	5.359	4.610	4192256	7892435	98.151	218.570 #
20) L4 AR-1242-5	6.169	5.169	29003138	238.8E6	671.650	5547.152 #
21) L5 AR-1248-1	5.165	4.314	3927918	887669	95.808	23.830 #
22) L5 AR-1248-2	5.463	4.568	25417622	23108675	447.392	472.364
23) L5 AR-1248-3	5.679	4.610	15083823	7892435	226.089	153.803 #
24) L5 AR-1248-4	0.000	4.792	0	13905369	N.D.	237.188 #
25) L5 AR-1248-5	6.169	5.213	29003138	9340919	419.539	163.025 #
26) L6 AR-1254-1	6.093	5.169	283.6E6	238.8E6	3753.608	2734.300 #
27) L6 AR-1254-2	6.331	5.330	372.8E6	280.6E6	3323.969	3678.402
28) L6 AR-1254-3	6.732	5.779	380.7E6	834.8E6	3289.840	6811.271 #
29) L6 AR-1254-4	7.044	6.011	186.7E6	83531494	2339.173	1058.366 #
30) L6 AR-1254-5	7.505	6.463	2202.7E6	1986.3E6	25683.767	17176.089 #
31) L7 AR-1260-1	6.913	5.903	1423.8E6	1192.9E6	17002.249	14916.864
32) L7 AR-1260-2	7.196	6.110	1681.6E6	1545.9E6	18577.153	15831.040
33) L7 AR-1260-3	7.591	6.272	1101.6E6	1397.0E6	15196.429	15303.143
34) L7 AR-1260-4	7.838	6.786	1476.2E6	1130.9E6	17193.994	13977.788
35) L7 AR-1260-5	8.182	7.053	2871.1E6	2868.7E6	18522.424	15517.700
36) L8 AR-1262-1	7.591	6.505	1101.6E6	1117.8E6	11156.300	10167.773
37) L8 AR-1262-2	8.182	6.786	2871.1E6	1130.9E6	17784.216	11087.252 #
38) L8 AR-1262-3	8.525	7.360	1801.8E6	496.9E6	16469.516	5830.153 #
39) L8 AR-1262-4	0.000	7.429	0	2144.7E6	N.D.	13808.627 #
40) L8 AR-1262-5	9.288	7.973	608.8E6	673.0E6	10932.144	8650.445
41) L9 AR-1268-1	8.525	7.360	1801.8E6	496.9E6	9242.849	1961.124 #

Data Path : Z:\pestpcbsrv\HPCHEM1\ECD_P\Data\PP030122\
 Data File : PP044120.D
 Signal(s) : Signal #1: ECD1A.ch Signal #2: ECD2B.ch
 Acq On : 01 Mar 2022 13:18
 Operator : YP\AJ
 Sample : N1704-01
 Misc :
 ALS Vial : 12 Sample Multiplier: 1

Instrument :
 ECD_P
 ClientSampleId :

Integration File signal 1: autoint1.e
 Integration File signal 2: autoint2.e
 Quant Time: Mar 02 00:11:09 2022
 Quant Method : Z:\pestpcbsrv\HPCHEM1\ECD_P\methods\PP021022.M
 Quant Title : GC EXTRACTABLES
 QLast Update : Fri Feb 11 04:48:05 2022
 Response via : Initial Calibration
 Integrator: ChemStation

Volume Inj. : 2 µl
 Signal #1 Phase : ZB-MR1 Signal #2 Phase: ZB-MR2
 Signal #1 Info : 30Mx0.32mmx 0.50µ Signal #2 Info : 30M x 0.32mm x 0.25µm

	Compound	RT#1	RT#2	Resp#1	Resp#2	ng/ml	ng/ml
42)	L9 AR-1268-2	0.000	7.429	0	2144.7E6	N.D.	9491.286 #
43)	L9 AR-1268-3	8.844	7.649f	8062161	46509760	52.225	238.843 #
44)	L9 AR-1268-4	9.288	7.973	608.8E6	673.0E6	9729.836	7483.382
45)	L9 AR-1268-5	9.712f	8.278	111.7E6	127.4E6	245.744	211.983

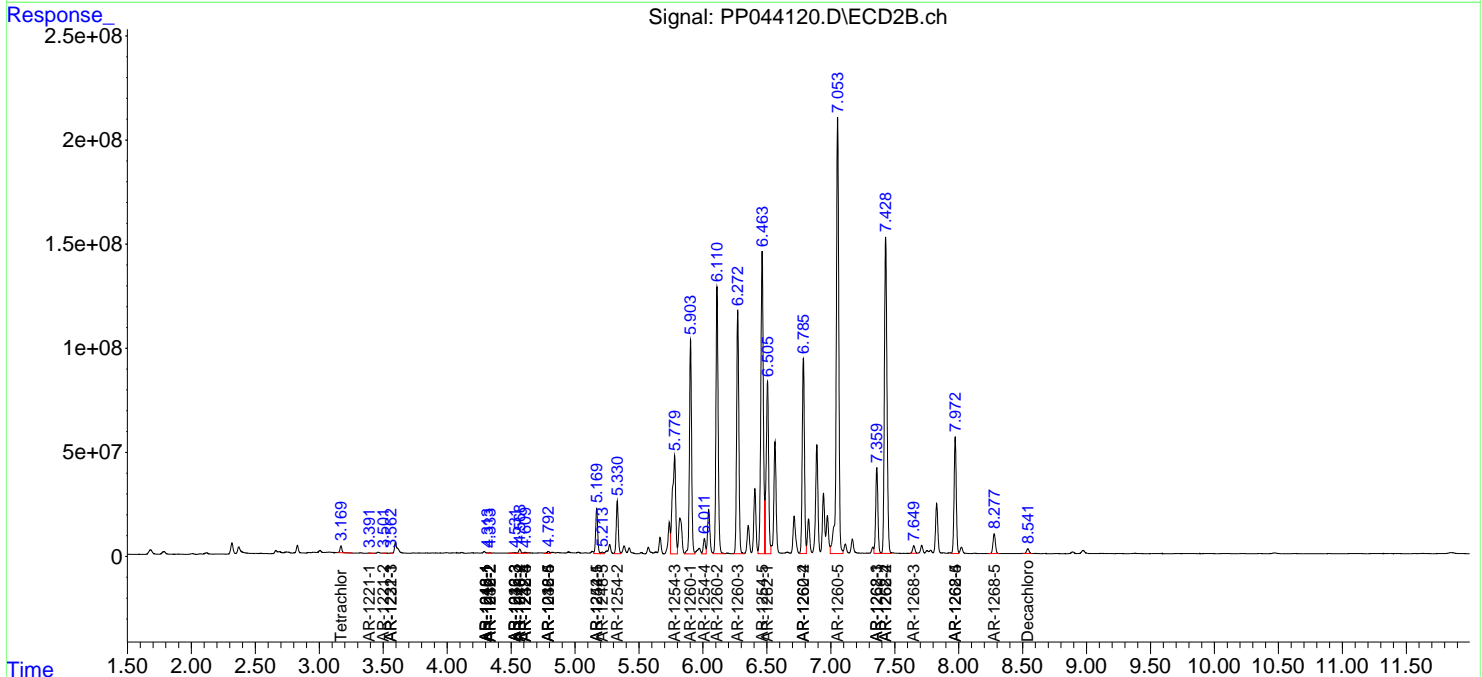
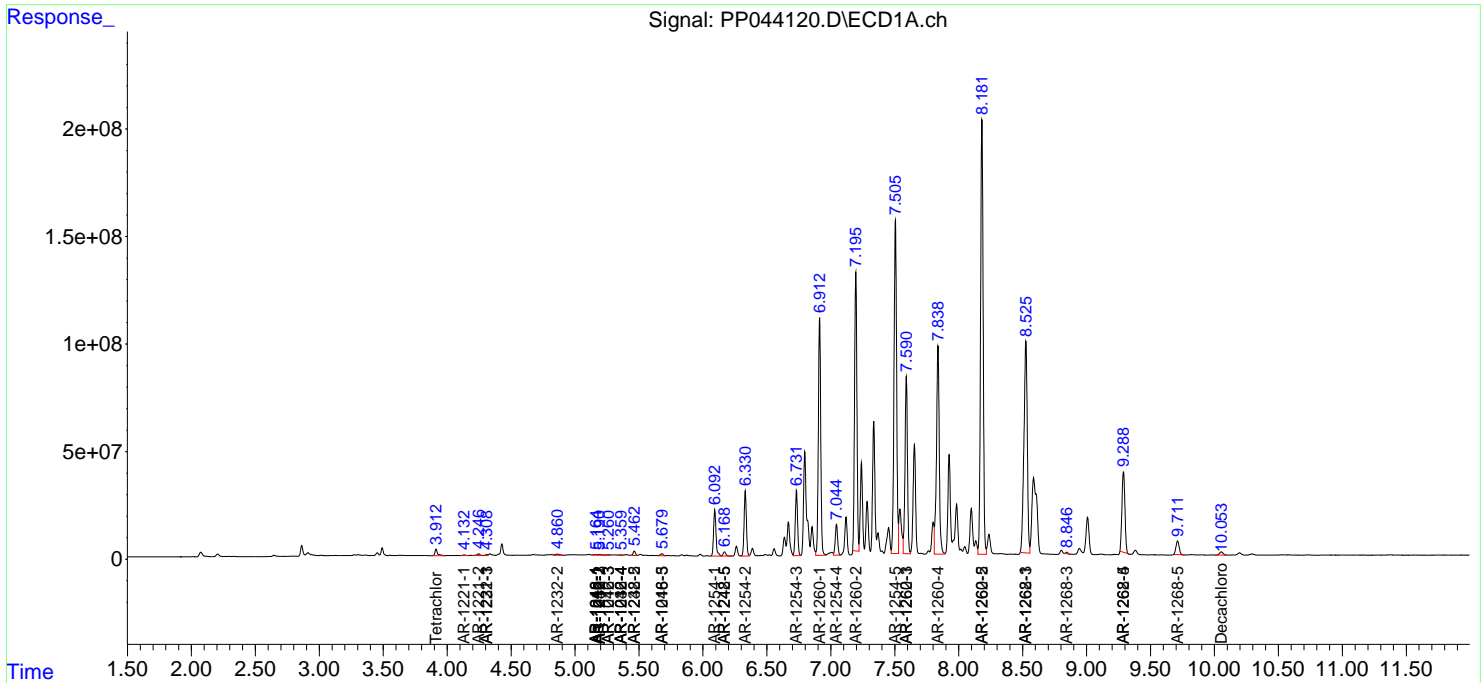
(f)=RT Delta > 1/2 Window (#)=Amounts differ by > 25% (m)=manual int.

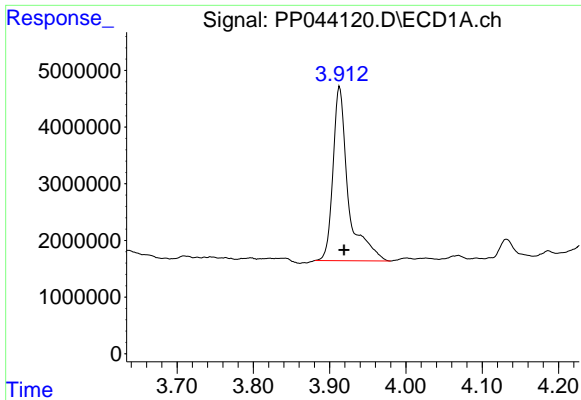
Data Path : Z:\pestpcbsrv\HPCHEM1\ECD_P\Data\PP030122\
 Data File : PP044120.D
 Signal(s) : Signal #1: ECD1A.ch Signal #2: ECD2B.ch
 Acq On : 01 Mar 2022 13:18
 Operator : YP\AJ
 Sample : N1704-01
 Misc :
 ALS Vial : 12 Sample Multiplier: 1

Instrument :
 ECD_P
 ClientSampleId :

Integration File signal 1: autoint1.e
 Integration File signal 2: autoint2.e
 Quant Time: Mar 02 00:11:09 2022
 Quant Method : Z:\pestpcbsrv\HPCHEM1\ECD_P\methods\PP021022.M
 Quant Title : GC EXTRACTABLES
 QLast Update : Fri Feb 11 04:48:05 2022
 Response via : Initial Calibration
 Integrator: ChemStation

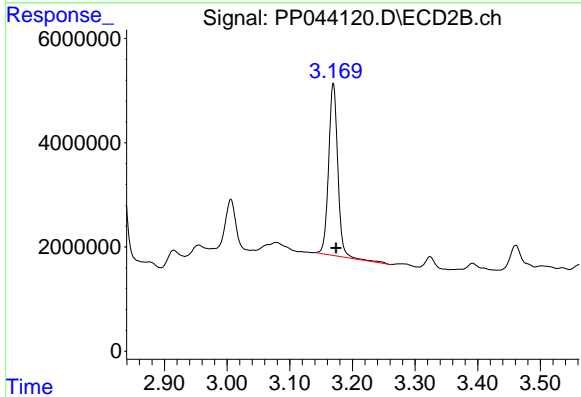
Volume Inj. : 2 µl
 Signal #1 Phase : ZB-MR1 Signal #2 Phase: ZB-MR2
 Signal #1 Info : 30Mx0.32mmx 0.50µ Signal #2 Info : 30M x 0.32mm x 0.25µm



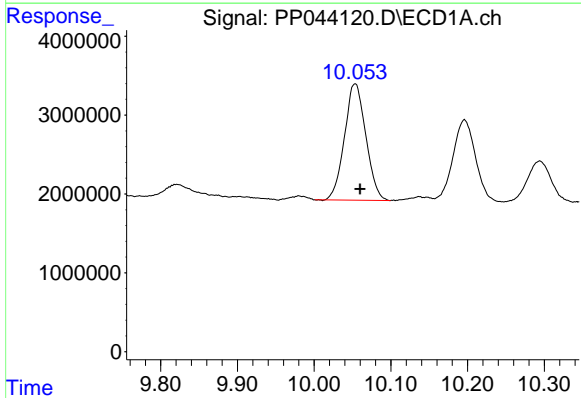


#1 Tetrachloro-m-xylene
 R.T.: 3.913 min
 Delta R.T.: -0.006 min
 Response: 42707843
 Conc: 19.32 ng/ml

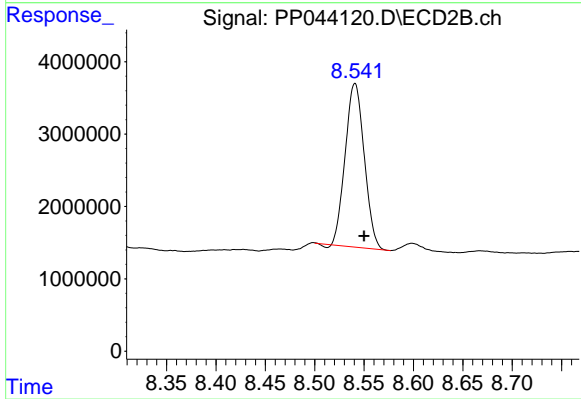
Instrument :
 ECD_P
 ClientSampleId :



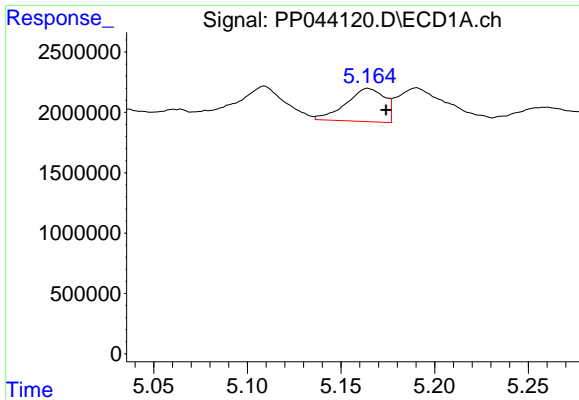
#1 Tetrachloro-m-xylene
 R.T.: 3.170 min
 Delta R.T.: -0.005 min
 Response: 33847748
 Conc: 18.02 ng/ml



#2 Decachlorobiphenyl
 R.T.: 10.054 min
 Delta R.T.: -0.006 min
 Response: 28711364
 Conc: 24.17 ng/ml



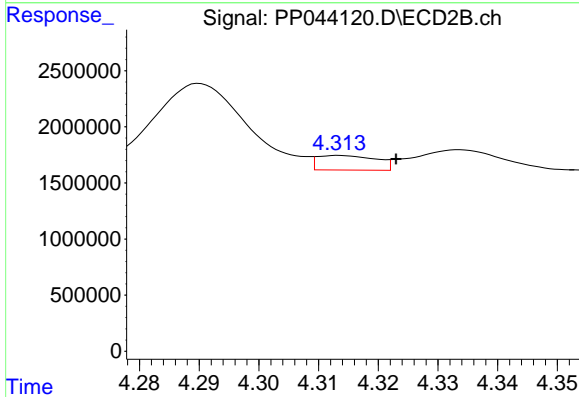
#2 Decachlorobiphenyl
 R.T.: 8.541 min
 Delta R.T.: -0.009 min
 Response: 30298398
 Conc: 18.68 ng/ml



#3 AR-1016-1

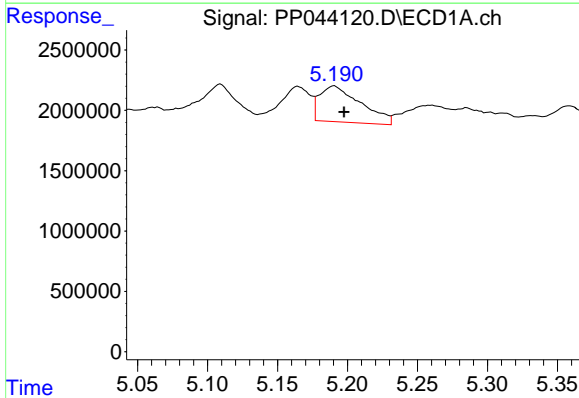
R.T.: 5.165 min
 Delta R.T.: -0.009 min
 Response: 3927918
 Conc: 54.13 ng/ml

Instrument :
 ECD_P
 ClientSampleId :



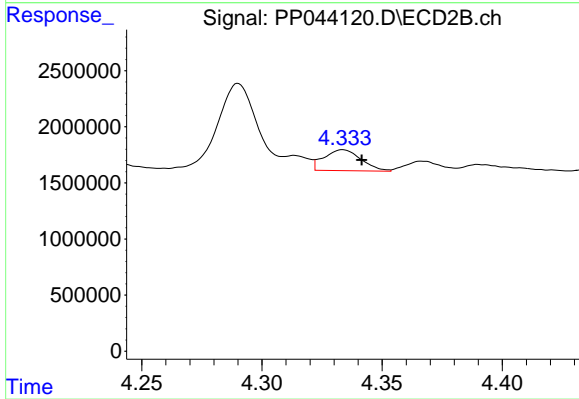
#3 AR-1016-1

R.T.: 4.314 min
 Delta R.T.: -0.009 min
 Response: 887669
 Conc: 14.49 ng/ml



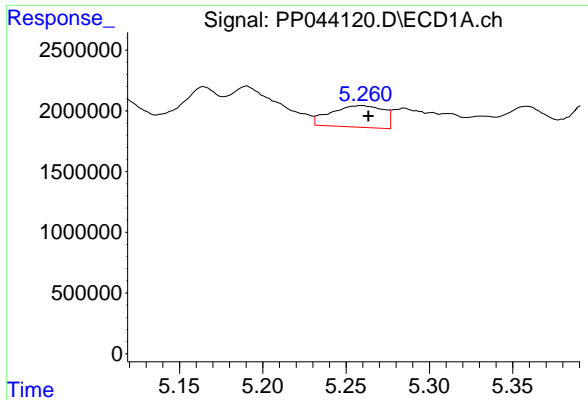
#4 AR-1016-2

R.T.: 5.191 min
 Delta R.T.: -0.007 min
 Response: 6127689
 Conc: 58.10 ng/ml



#4 AR-1016-2

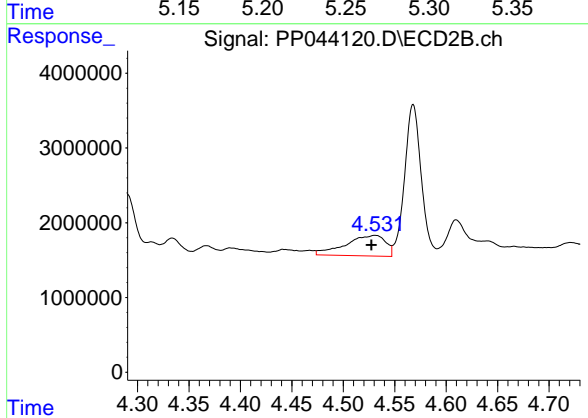
R.T.: 4.334 min
 Delta R.T.: -0.008 min
 Response: 1999009
 Conc: 23.66 ng/ml



#5 AR-1016-3

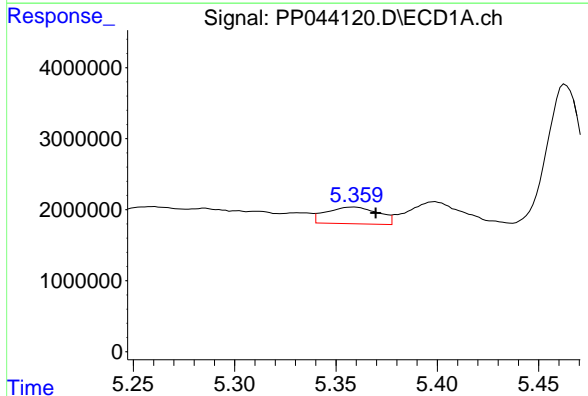
R.T.: 5.260 min
 Delta R.T.: -0.004 min
 Response: 3912092
 Conc: 59.41 ng/ml

Instrument :
 ECD_P
 ClientSampleId :



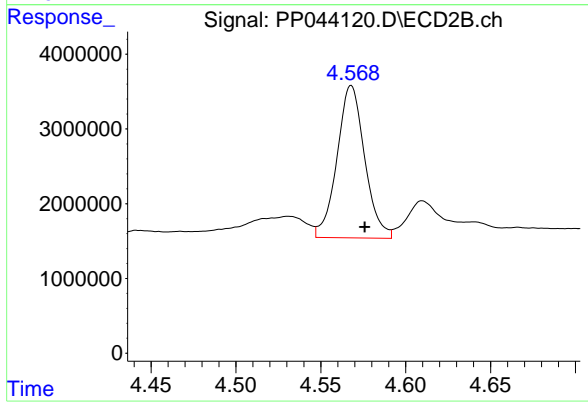
#5 AR-1016-3

R.T.: 4.531 min
 Delta R.T.: 0.004 min
 Response: 7461804
 Conc: 159.72 ng/ml



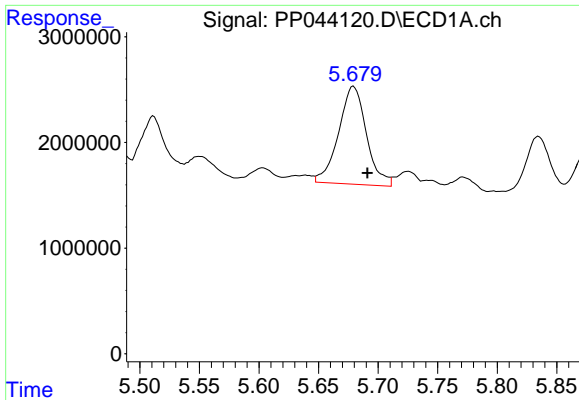
#6 AR-1016-4

R.T.: 5.359 min
 Delta R.T.: -0.011 min
 Response: 4192256
 Conc: 77.30 ng/ml



#6 AR-1016-4

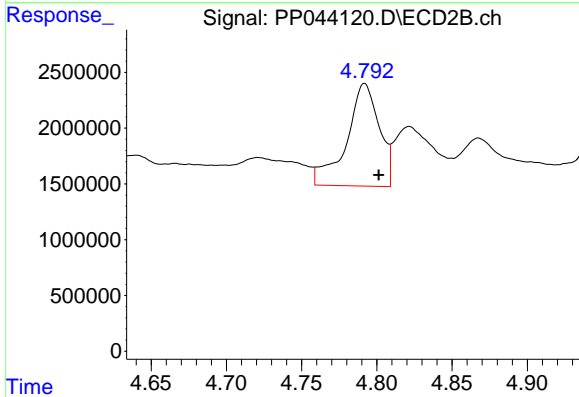
R.T.: 4.568 min
 Delta R.T.: -0.008 min
 Response: 23108675
 Conc: 618.36 ng/ml



#7 AR-1016-5

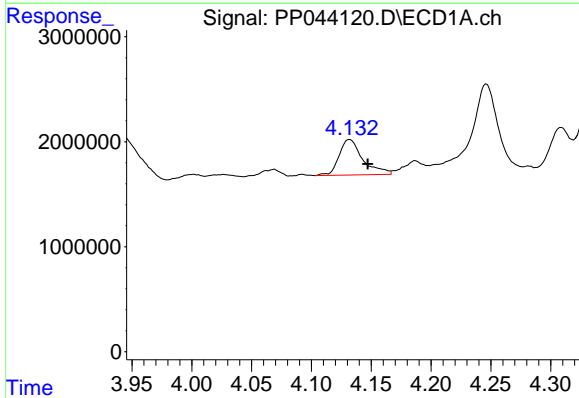
R.T.: 5.679 min
 Delta R.T.: -0.012 min
 Response: 15083823
 Conc: 287.16 ng/ml

Instrument :
 ECD_P
 ClientSampleId :



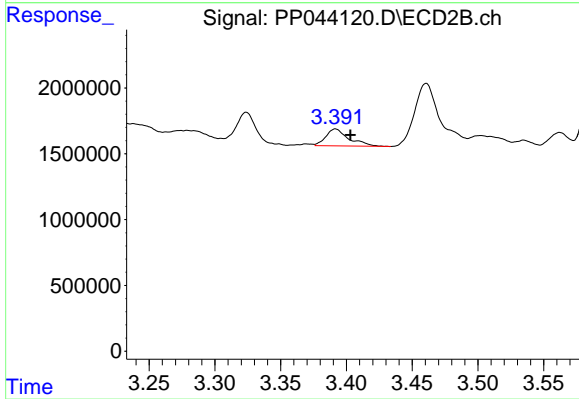
#7 AR-1016-5

R.T.: 4.792 min
 Delta R.T.: -0.009 min
 Response: 13905369
 Conc: 304.39 ng/ml



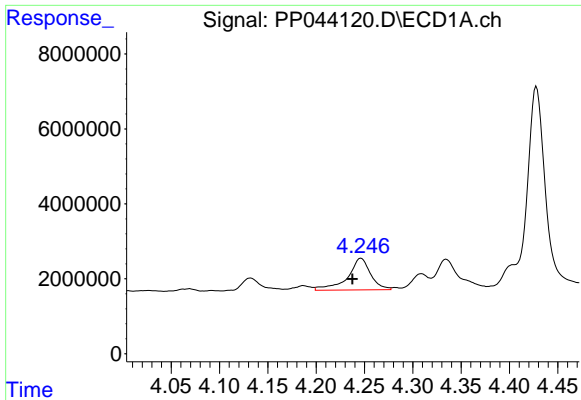
#8 AR-1221-1

R.T.: 4.132 min
 Delta R.T.: -0.015 min
 Response: 4668268
 Conc: 183.36 ng/ml



#8 AR-1221-1

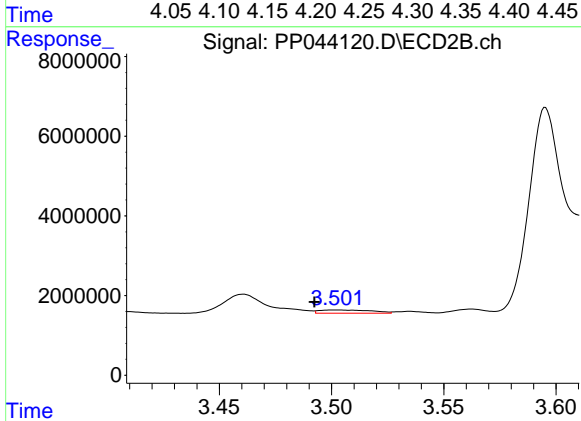
R.T.: 3.392 min
 Delta R.T.: -0.011 min
 Response: 1563232
 Conc: 65.53 ng/ml



#9 AR-1221-2

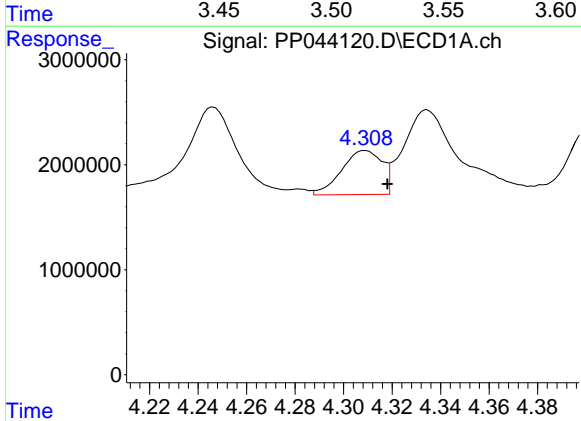
R.T.: 4.246 min
 Delta R.T.: 0.009 min
 Response: 13958847
 Conc: 727.09 ng/ml

Instrument :
 ECD_P
 ClientSampleId :



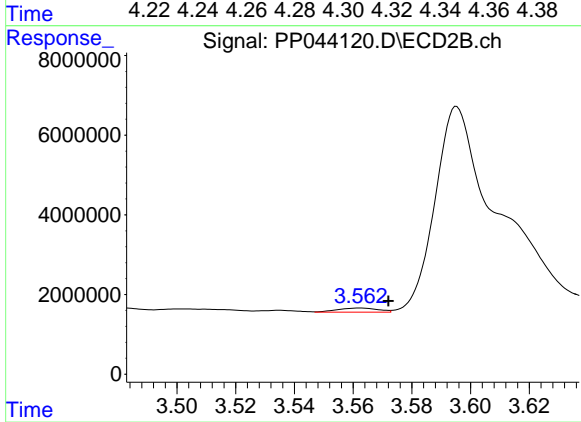
#9 AR-1221-2

R.T.: 3.502 min
 Delta R.T.: 0.010 min
 Response: 1347469
 Conc: 74.61 ng/ml



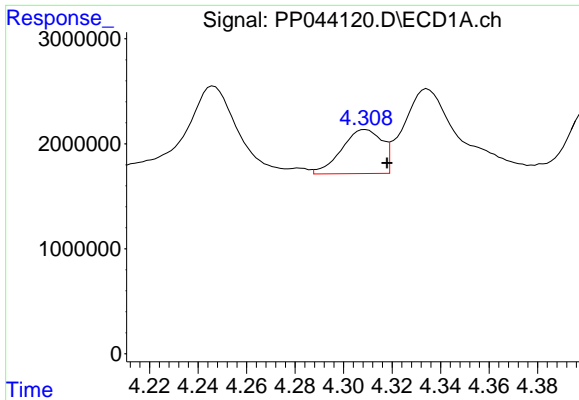
#10 AR-1221-3

R.T.: 4.309 min
 Delta R.T.: -0.009 min
 Response: 4840134
 Conc: 84.26 ng/ml



#10 AR-1221-3

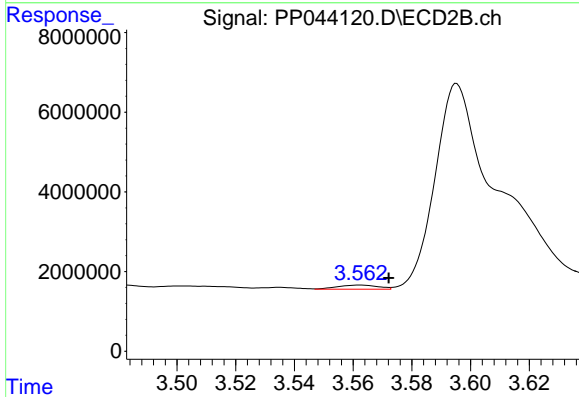
R.T.: 3.562 min
 Delta R.T.: -0.010 min
 Response: 1013943
 Conc: 19.65 ng/ml



#11 AR-1232-1

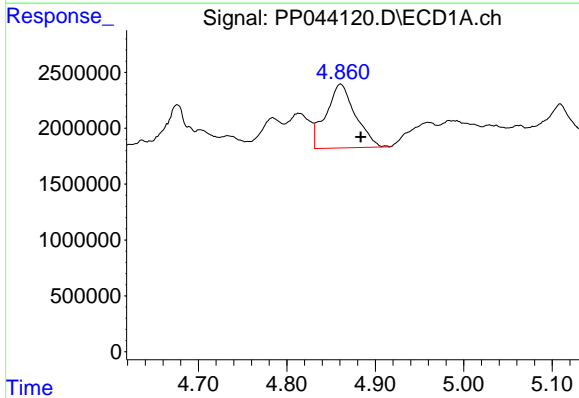
R.T.: 4.309 min
 Delta R.T.: -0.009 min
 Response: 4840134
 Conc: 99.73 ng/ml

Instrument :
 ECD_P
 ClientSampleId :



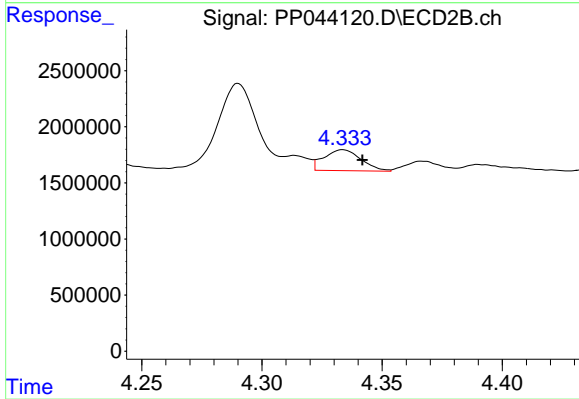
#11 AR-1232-1

R.T.: 3.562 min
 Delta R.T.: -0.010 min
 Response: 1013943
 Conc: 23.57 ng/ml



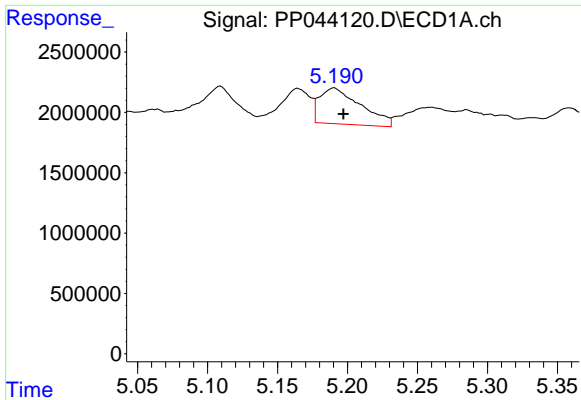
#12 AR-1232-2

R.T.: 4.861 min
 Delta R.T.: -0.023 min
 Response: 13241635
 Conc: 558.79 ng/ml



#12 AR-1232-2

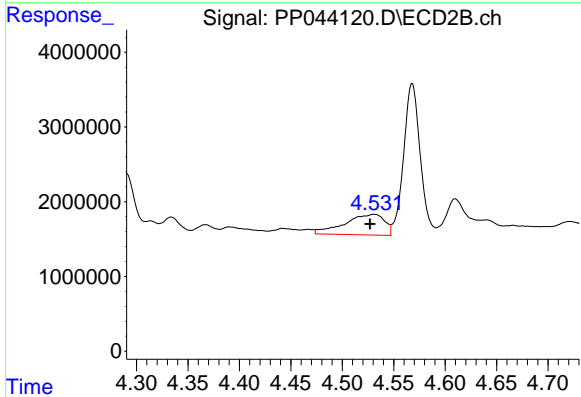
R.T.: 4.334 min
 Delta R.T.: -0.008 min
 Response: 1999009
 Conc: 56.00 ng/ml



#13 AR-1232-3

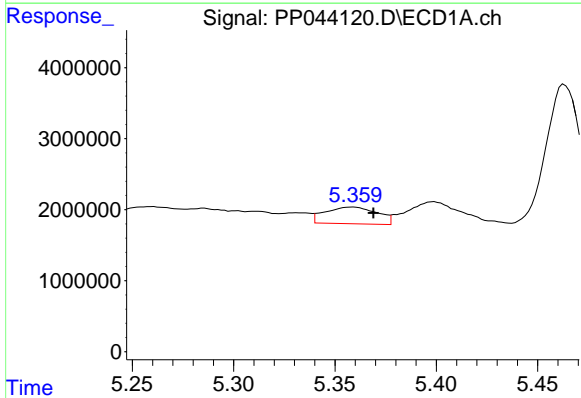
R.T.: 5.191 min
 Delta R.T.: -0.007 min
 Response: 6127689
 Conc: 142.33 ng/ml

Instrument :
 ECD_P
 ClientSampleId :



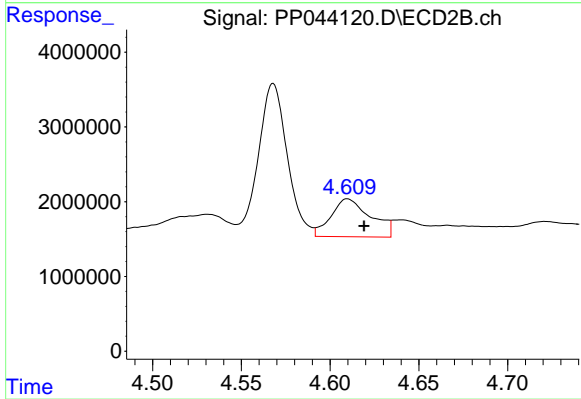
#13 AR-1232-3

R.T.: 4.531 min
 Delta R.T.: 0.004 min
 Response: 7461804
 Conc: 381.60 ng/ml



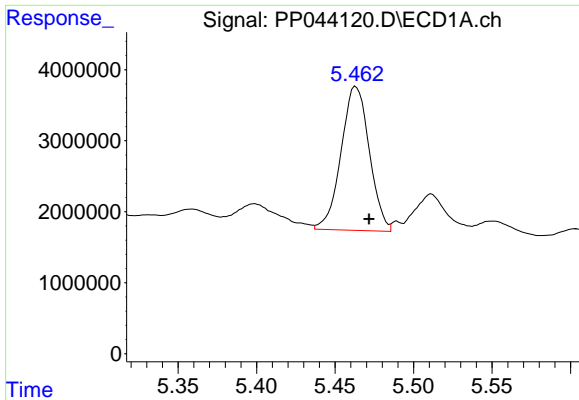
#14 AR-1232-4

R.T.: 5.359 min
 Delta R.T.: -0.010 min
 Response: 4192256
 Conc: 192.06 ng/ml



#14 AR-1232-4

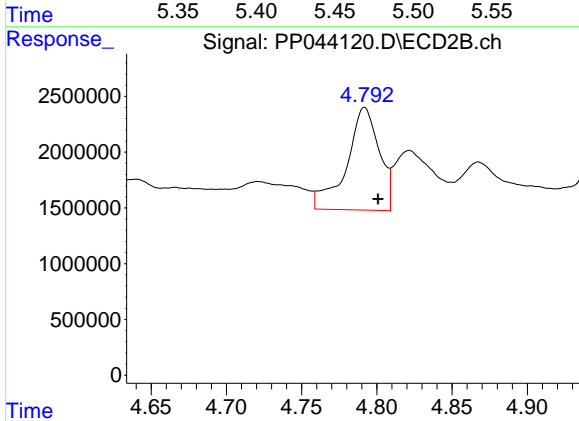
R.T.: 4.610 min
 Delta R.T.: -0.009 min
 Response: 7892435
 Conc: 456.41 ng/ml



#15 AR-1232-5

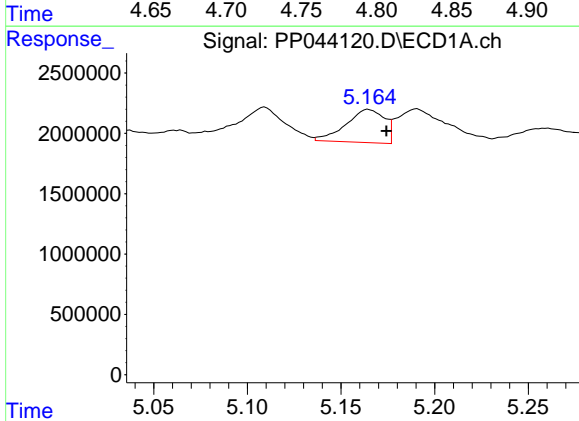
R.T.: 5.463 min
 Delta R.T.: -0.008 min
 Response: 25417622
 Conc: 1575.88 ng/ml

Instrument :
 ECD_P
 ClientSampleId :



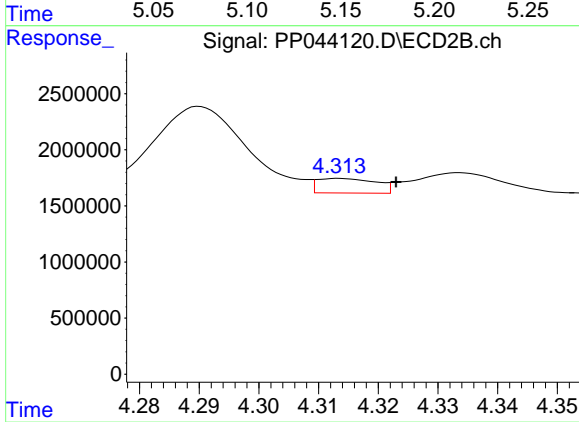
#15 AR-1232-5

R.T.: 4.792 min
 Delta R.T.: -0.009 min
 Response: 13905369
 Conc: 740.27 ng/ml



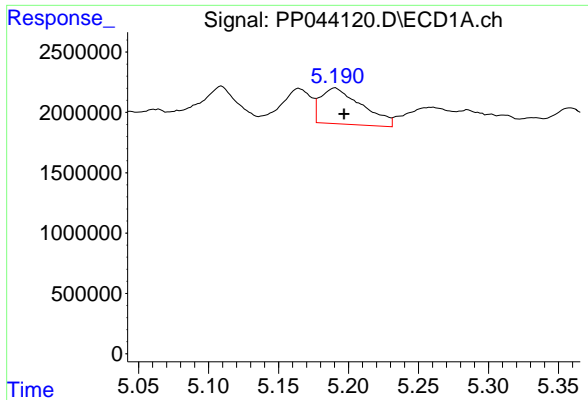
#16 AR-1242-1

R.T.: 5.165 min
 Delta R.T.: -0.009 min
 Response: 3927918
 Conc: 69.90 ng/ml



#16 AR-1242-1

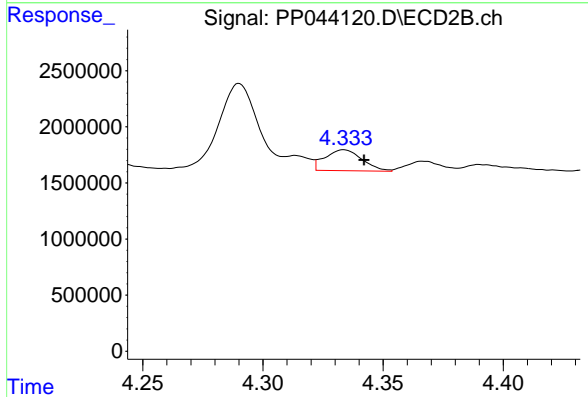
R.T.: 4.314 min
 Delta R.T.: -0.010 min
 Response: 887669
 Conc: 18.21 ng/ml



#17 AR-1242-2

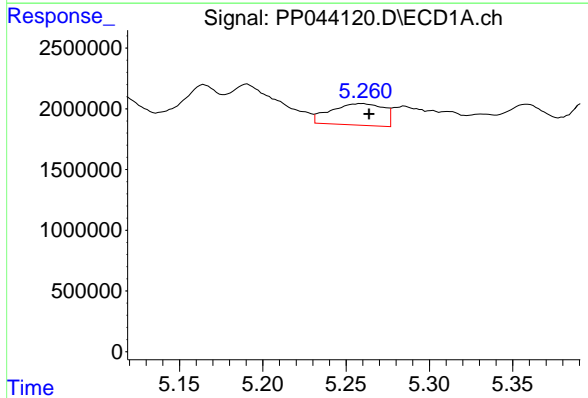
R.T.: 5.191 min
 Delta R.T.: -0.006 min
 Response: 6127689
 Conc: 74.06 ng/ml

Instrument :
 ECD_P
 ClientSampleId :



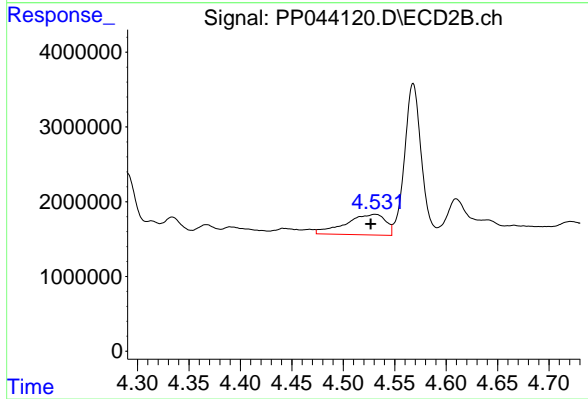
#17 AR-1242-2

R.T.: 4.334 min
 Delta R.T.: -0.008 min
 Response: 1999009
 Conc: 29.69 ng/ml



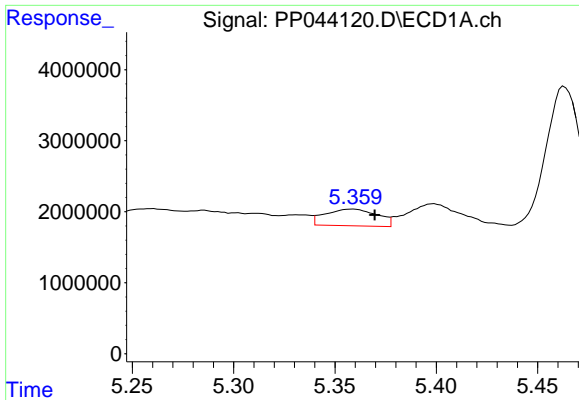
#18 AR-1242-3

R.T.: 5.260 min
 Delta R.T.: -0.004 min
 Response: 3912092
 Conc: 75.58 ng/ml



#18 AR-1242-3

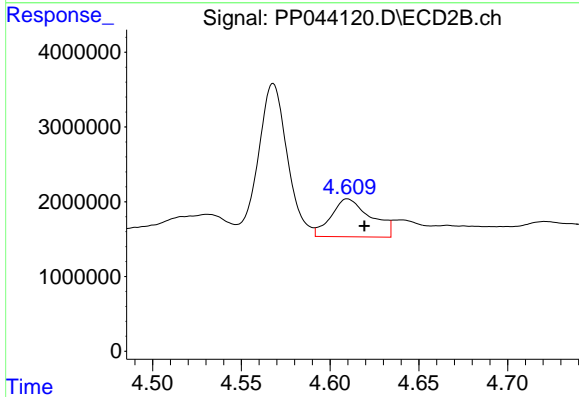
R.T.: 4.531 min
 Delta R.T.: 0.004 min
 Response: 7461804
 Conc: 198.78 ng/ml



#19 AR-1242-4

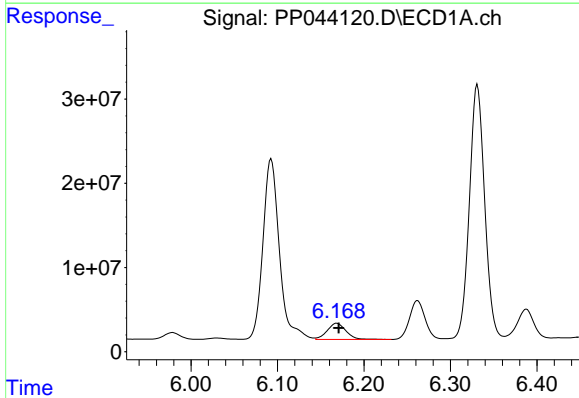
R.T.: 5.359 min
 Delta R.T.: -0.011 min
 Response: 4192256
 Conc: 98.15 ng/ml

Instrument :
 ECD_P
 ClientSampleId :



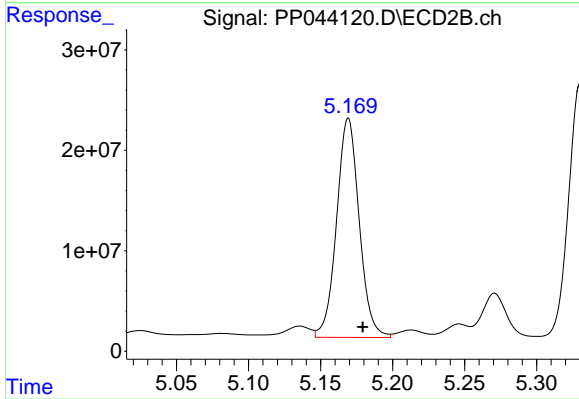
#19 AR-1242-4

R.T.: 4.610 min
 Delta R.T.: -0.009 min
 Response: 7892435
 Conc: 218.57 ng/ml



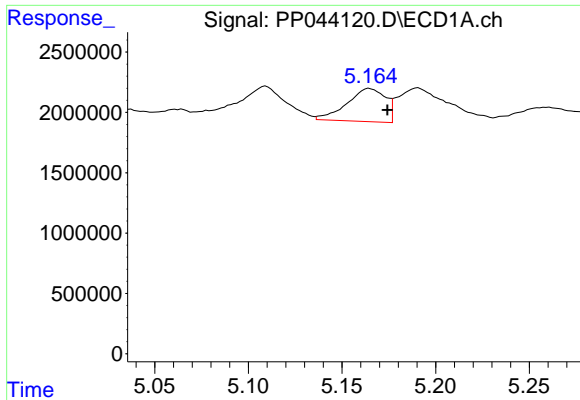
#20 AR-1242-5

R.T.: 6.169 min
 Delta R.T.: -0.002 min
 Response: 29003138
 Conc: 671.65 ng/ml



#20 AR-1242-5

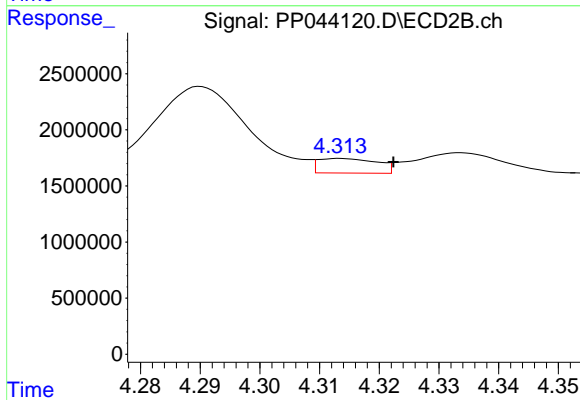
R.T.: 5.169 min
 Delta R.T.: -0.010 min
 Response: 238793481
 Conc: 5547.15 ng/ml



#21 AR-1248-1

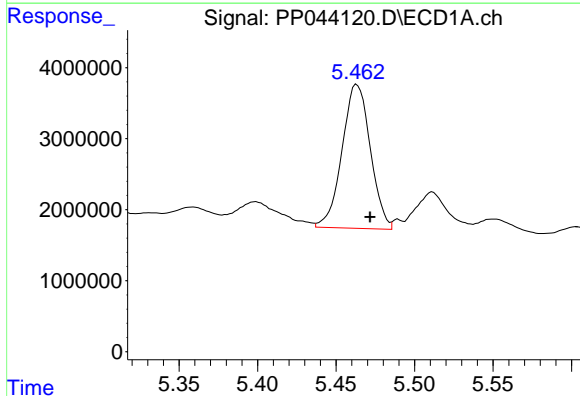
R.T.: 5.165 min
 Delta R.T.: -0.010 min
 Response: 3927918
 Conc: 95.81 ng/ml

Instrument :
 ECD_P
 ClientSampleId :



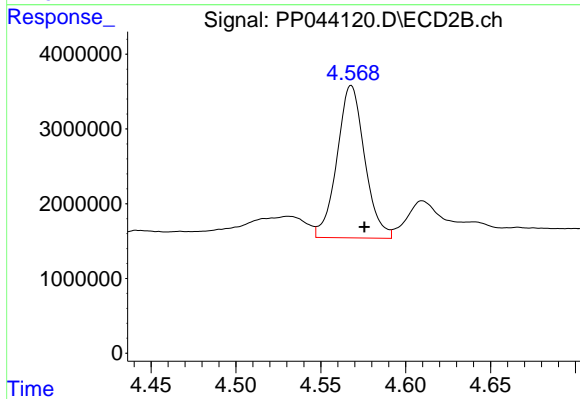
#21 AR-1248-1

R.T.: 4.314 min
 Delta R.T.: -0.009 min
 Response: 887669
 Conc: 23.83 ng/ml



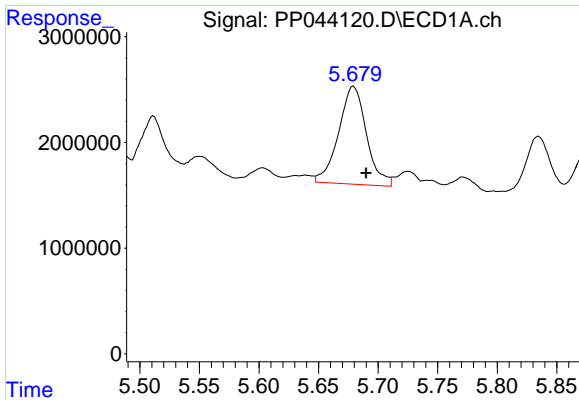
#22 AR-1248-2

R.T.: 5.463 min
 Delta R.T.: -0.008 min
 Response: 25417622
 Conc: 447.39 ng/ml



#22 AR-1248-2

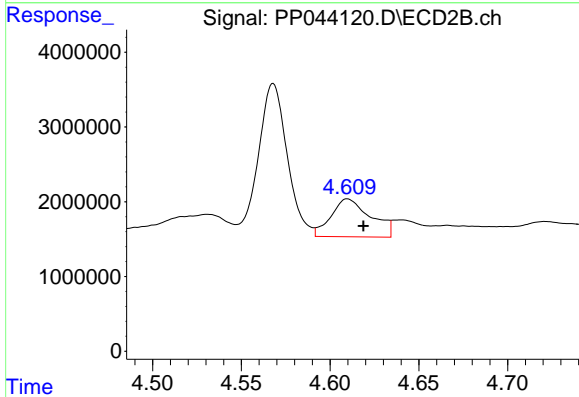
R.T.: 4.568 min
 Delta R.T.: -0.008 min
 Response: 23108675
 Conc: 472.36 ng/ml



#23 AR-1248-3

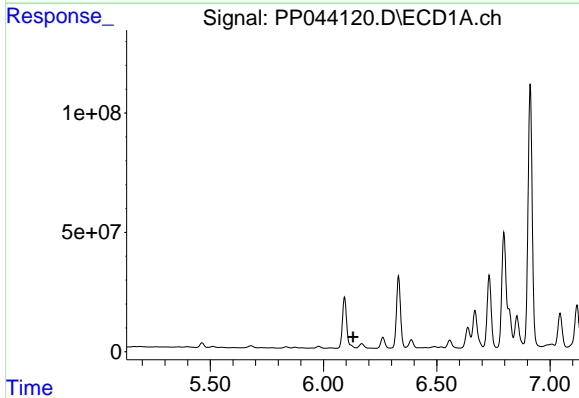
R.T.: 5.679 min
 Delta R.T.: -0.011 min
 Response: 15083823
 Conc: 226.09 ng/ml

Instrument :
 ECD_P
 ClientSampleId :



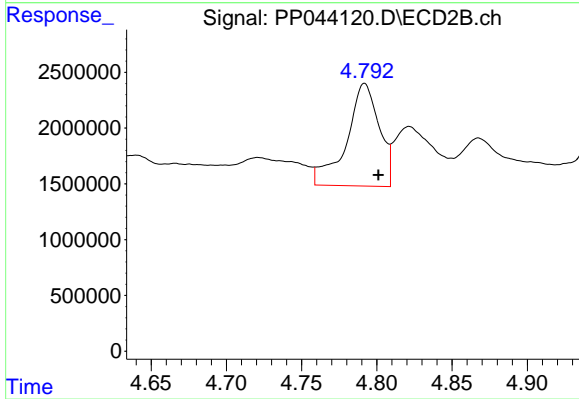
#23 AR-1248-3

R.T.: 4.610 min
 Delta R.T.: -0.009 min
 Response: 7892435
 Conc: 153.80 ng/ml



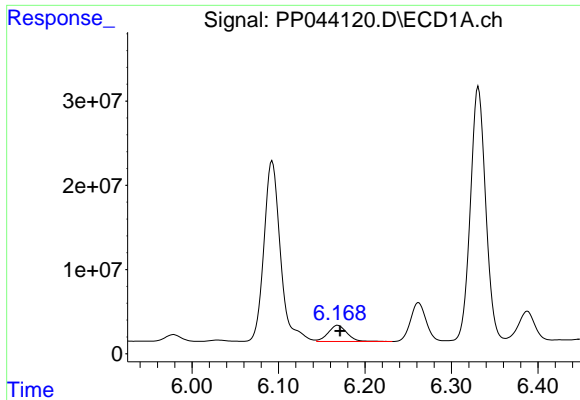
#24 AR-1248-4

R.T.: 0.000 min
 Exp R.T. : 6.130 min
 Response: 0
 Conc: N.D.



#24 AR-1248-4

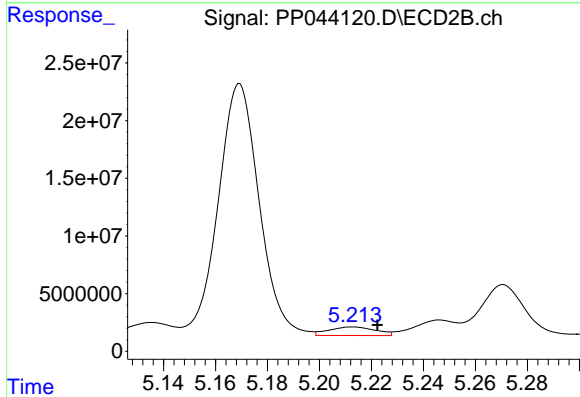
R.T.: 4.792 min
 Delta R.T.: -0.009 min
 Response: 13905369
 Conc: 237.19 ng/ml



#25 AR-1248-5

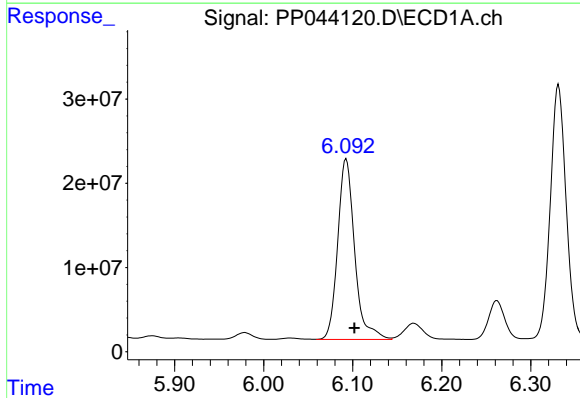
R.T.: 6.169 min
 Delta R.T.: -0.003 min
 Response: 29003138
 Conc: 419.54 ng/ml

Instrument :
 ECD_P
 ClientSampleId :



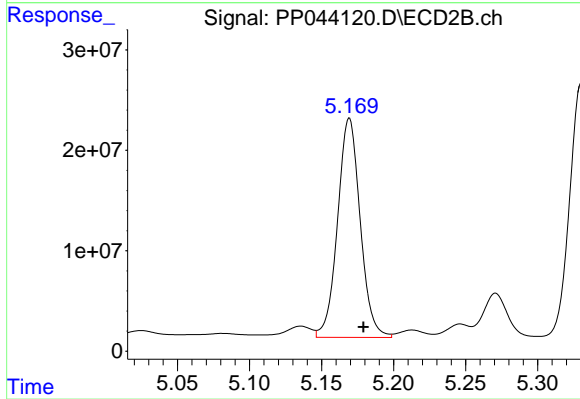
#25 AR-1248-5

R.T.: 5.213 min
 Delta R.T.: -0.009 min
 Response: 9340919
 Conc: 163.02 ng/ml



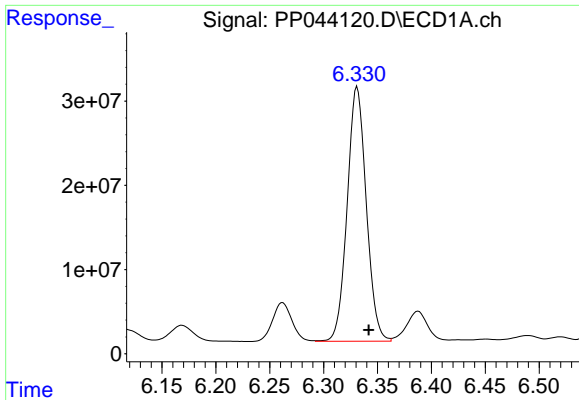
#26 AR-1254-1

R.T.: 6.093 min
 Delta R.T.: -0.009 min
 Response: 283609473
 Conc: 3753.61 ng/ml



#26 AR-1254-1

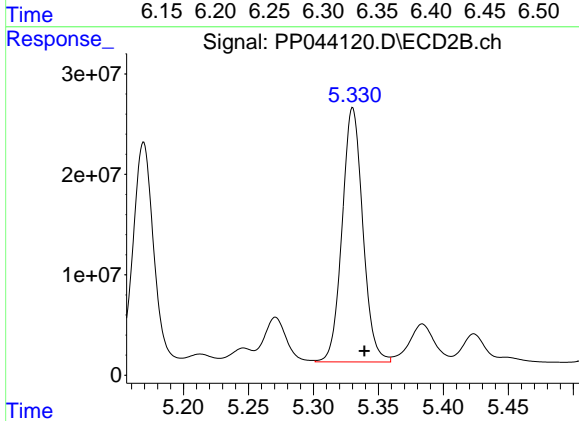
R.T.: 5.169 min
 Delta R.T.: -0.010 min
 Response: 238793481
 Conc: 2734.30 ng/ml



#27 AR-1254-2

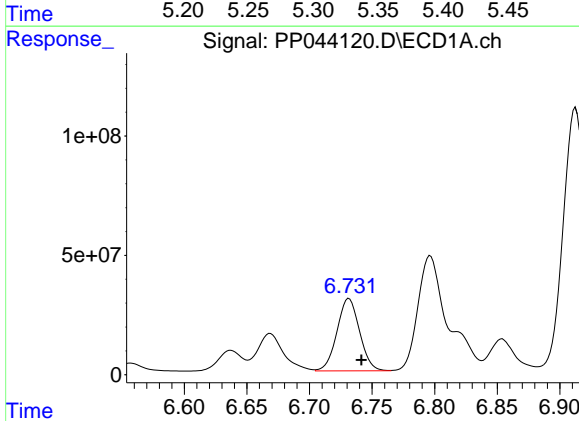
R.T.: 6.331 min
 Delta R.T.: -0.011 min
 Response: 372844858
 Conc: 3323.97 ng/ml

Instrument :
 ECD_P
 ClientSampleId :



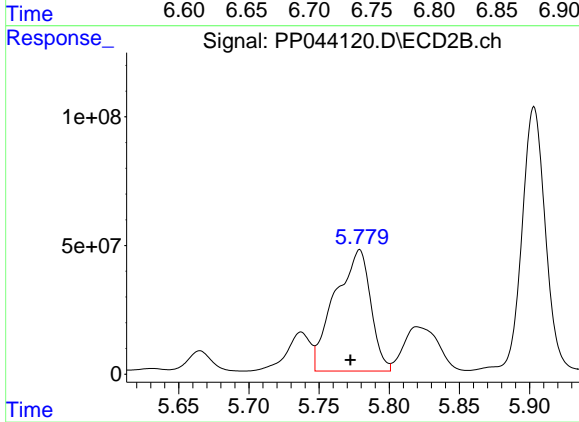
#27 AR-1254-2

R.T.: 5.330 min
 Delta R.T.: -0.009 min
 Response: 280578375
 Conc: 3678.40 ng/ml



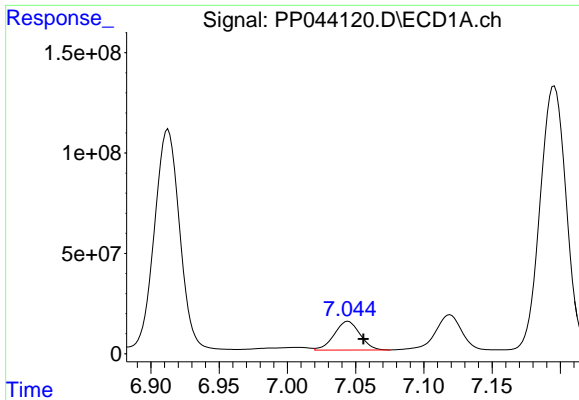
#28 AR-1254-3

R.T.: 6.732 min
 Delta R.T.: -0.010 min
 Response: 380675906
 Conc: 3289.84 ng/ml



#28 AR-1254-3

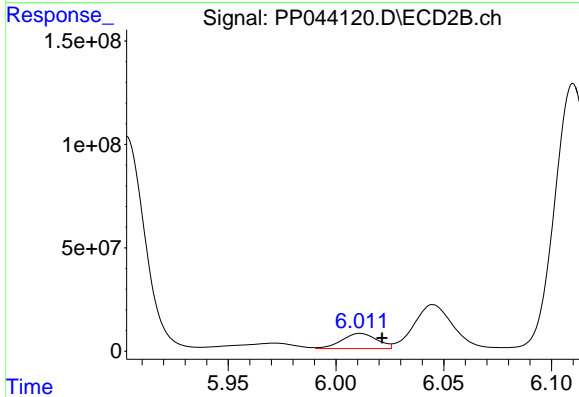
R.T.: 5.779 min
 Delta R.T.: 0.006 min
 Response: 834777385
 Conc: 6811.27 ng/ml



#29 AR-1254-4

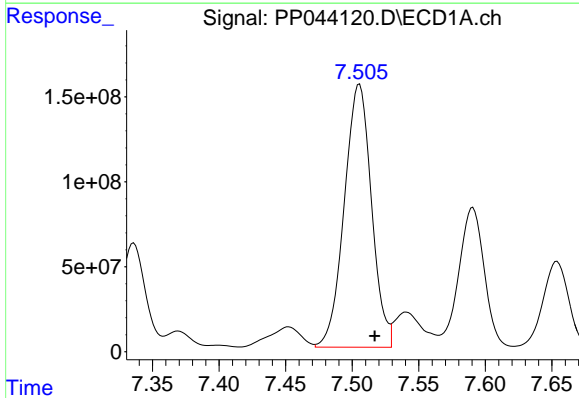
R.T.: 7.044 min
 Delta R.T.: -0.011 min
 Response: 186744464
 Conc: 2339.17 ng/ml

Instrument :
 ECD_P
 ClientSampleId :



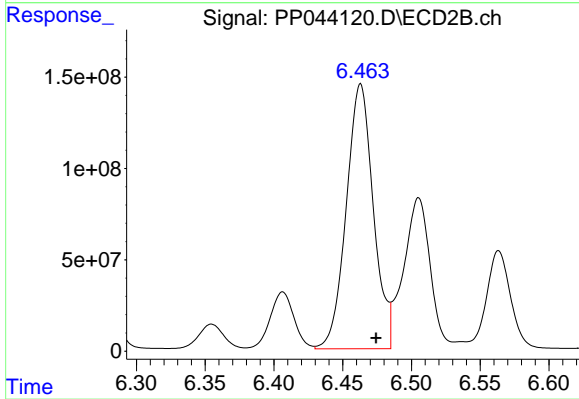
#29 AR-1254-4

R.T.: 6.011 min
 Delta R.T.: -0.010 min
 Response: 83531494
 Conc: 1058.37 ng/ml



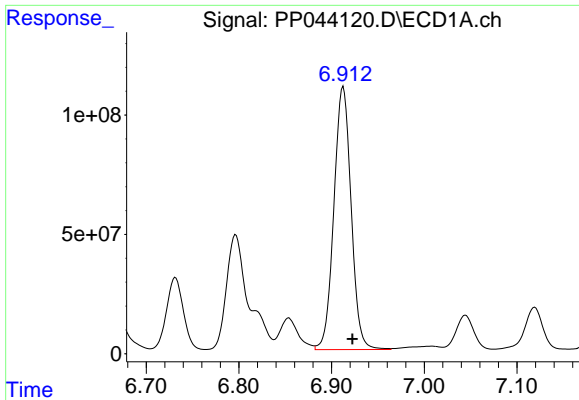
#30 AR-1254-5

R.T.: 7.505 min
 Delta R.T.: -0.011 min
 Response: 2202718327
 Conc: 25683.77 ng/ml



#30 AR-1254-5

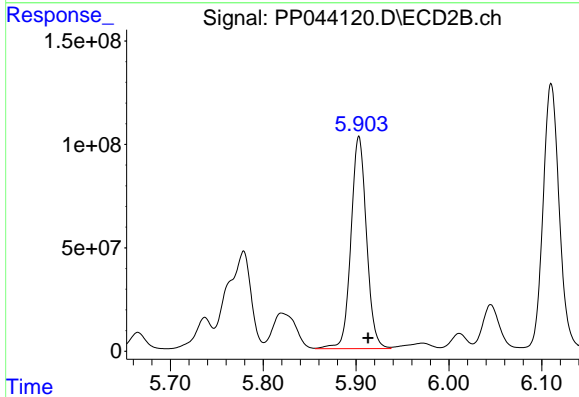
R.T.: 6.463 min
 Delta R.T.: -0.011 min
 Response: 1986320778
 Conc: 17176.09 ng/ml



#31 AR-1260-1

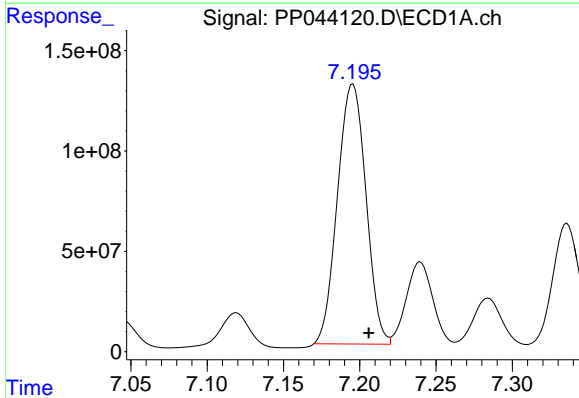
R.T.: 6.913 min
 Delta R.T.: -0.010 min
 Response: 1423805334
 Conc: 17002.25 ng/ml

Instrument :
 ECD_P
 ClientSampleId :



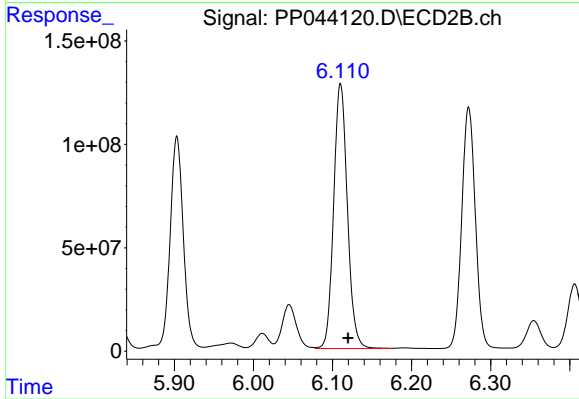
#31 AR-1260-1

R.T.: 5.903 min
 Delta R.T.: -0.010 min
 Response: 1192900603
 Conc: 14916.86 ng/ml



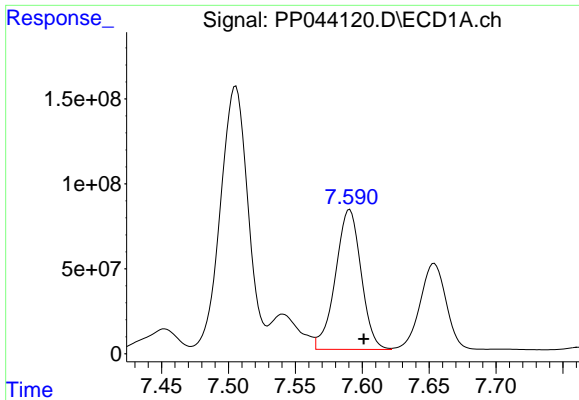
#32 AR-1260-2

R.T.: 7.196 min
 Delta R.T.: -0.010 min
 Response: 1681617129
 Conc: 18577.15 ng/ml



#32 AR-1260-2

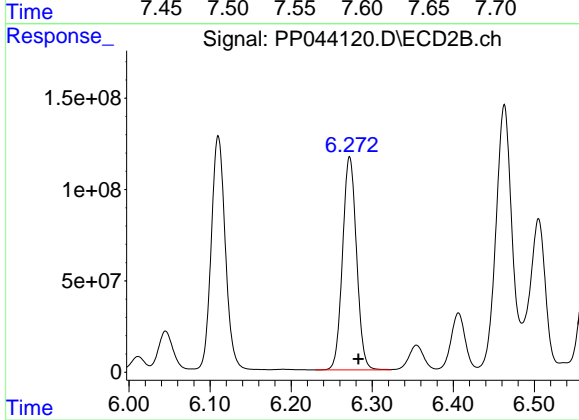
R.T.: 6.110 min
 Delta R.T.: -0.010 min
 Response: 1545947658
 Conc: 15831.04 ng/ml



#33 AR-1260-3

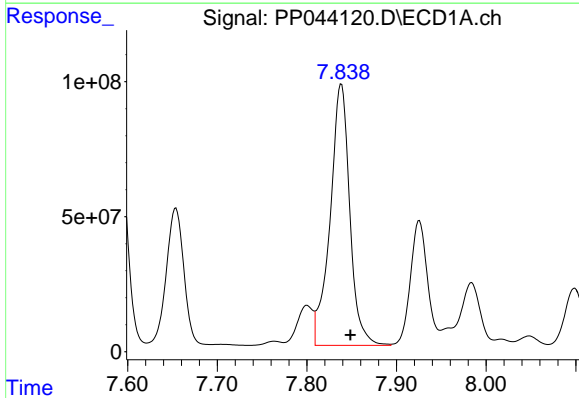
R.T.: 7.591 min
Delta R.T.: -0.010 min
Response: 1101566996
Conc: 15196.43 ng/ml

Instrument :
ECD_P
ClientSampleId :



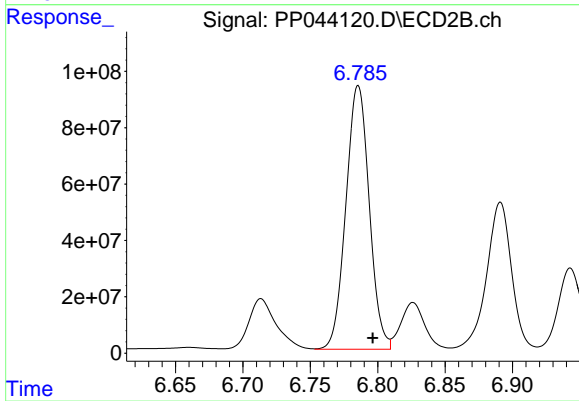
#33 AR-1260-3

R.T.: 6.272 min
Delta R.T.: -0.011 min
Response: 1397044169
Conc: 15303.14 ng/ml



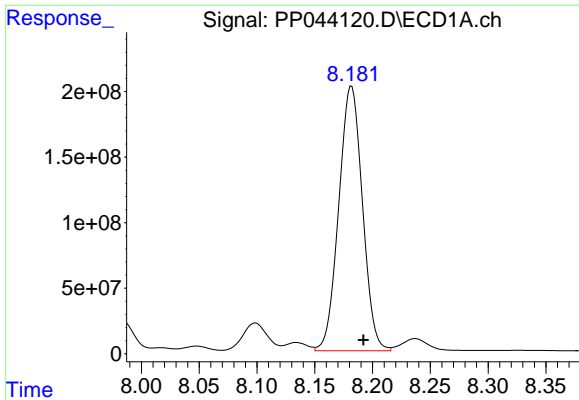
#34 AR-1260-4

R.T.: 7.838 min
Delta R.T.: -0.010 min
Response: 1476213161
Conc: 17193.99 ng/ml



#34 AR-1260-4

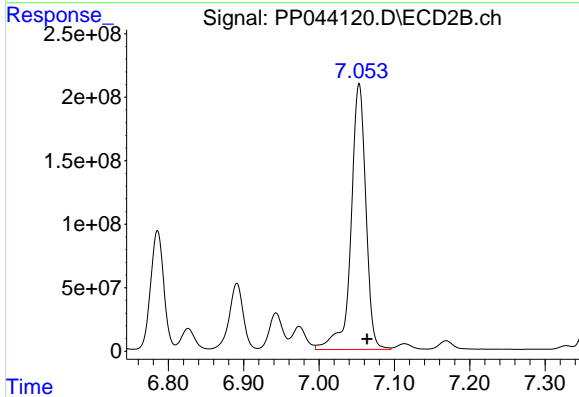
R.T.: 6.786 min
Delta R.T.: -0.011 min
Response: 1130944421
Conc: 13977.79 ng/ml



#35 AR-1260-5

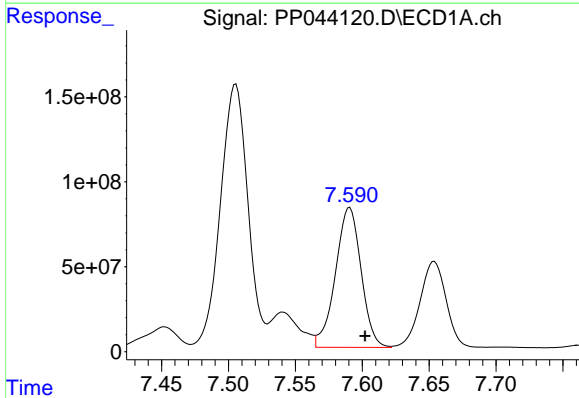
R.T.: 8.182 min
 Delta R.T.: -0.010 min
 Response: 2871110545
 Conc: 18522.42 ng/ml

Instrument :
 ECD_P
 ClientSampleId :



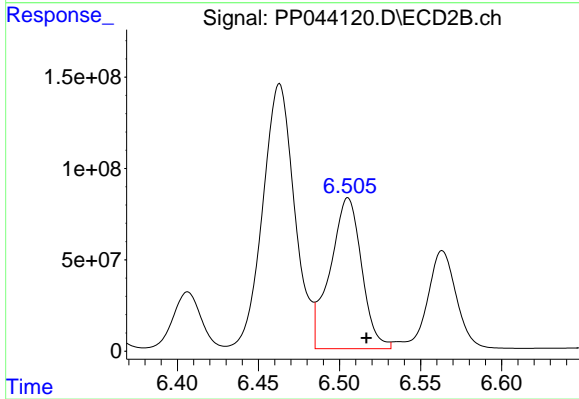
#35 AR-1260-5

R.T.: 7.053 min
 Delta R.T.: -0.011 min
 Response: 2868680755
 Conc: 15517.70 ng/ml



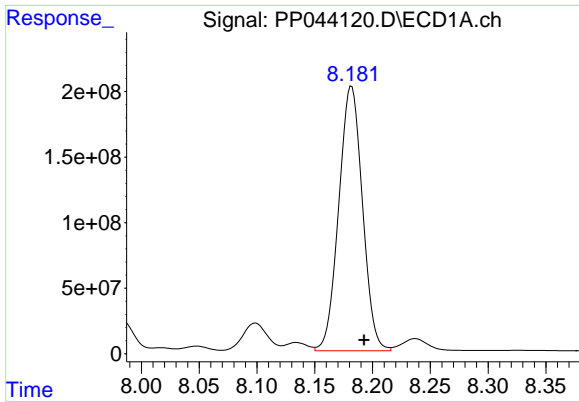
#36 AR-1262-1

R.T.: 7.591 min
 Delta R.T.: -0.011 min
 Response: 1101566996
 Conc: 11156.30 ng/ml



#36 AR-1262-1

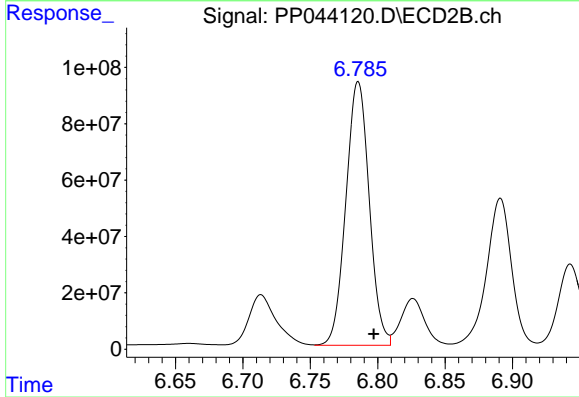
R.T.: 6.505 min
 Delta R.T.: -0.011 min
 Response: 1117772739
 Conc: 10167.77 ng/ml



#37 AR-1262-2

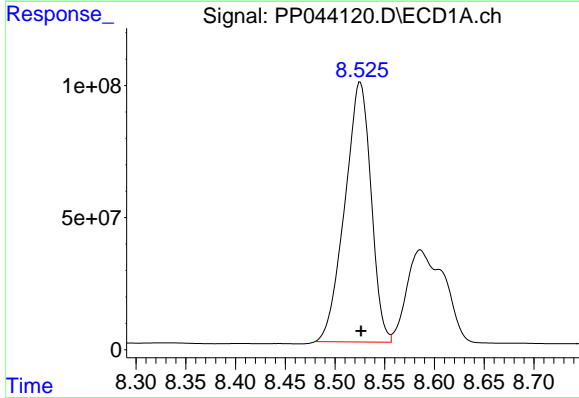
R.T.: 8.182 min
 Delta R.T.: -0.011 min
 Response: 2871110545
 Conc: 17784.22 ng/ml

Instrument :
 ECD_P
 ClientSampleId :



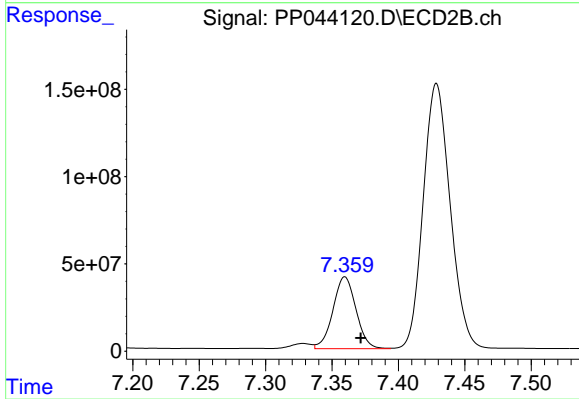
#37 AR-1262-2

R.T.: 6.786 min
 Delta R.T.: -0.012 min
 Response: 1130944421
 Conc: 11087.25 ng/ml



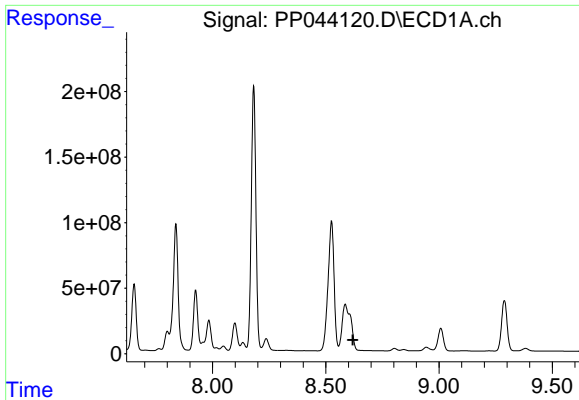
#38 AR-1262-3

R.T.: 8.525 min
 Delta R.T.: 0.000 min
 Response: 1801750382
 Conc: 16469.52 ng/ml



#38 AR-1262-3

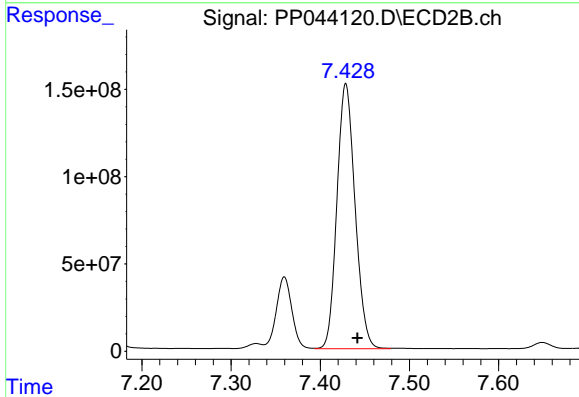
R.T.: 7.360 min
 Delta R.T.: -0.012 min
 Response: 496871726
 Conc: 5830.15 ng/ml



#39 AR-1262-4

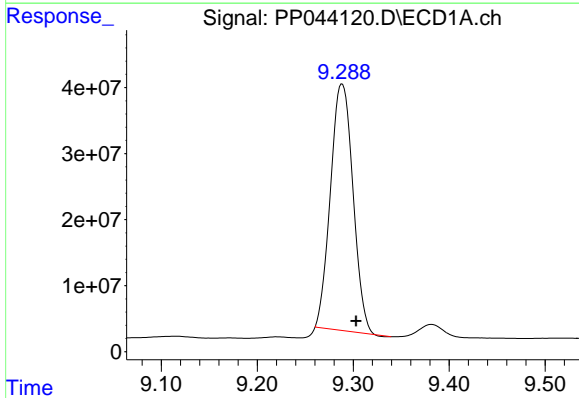
R.T.: 0.000 min
 Exp R.T.: 8.619 min
 Response: 0
 Conc: N.D.

Instrument :
 ECD_P
 ClientSampleId :



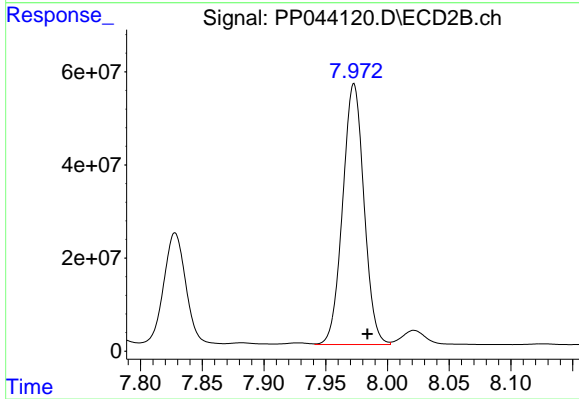
#39 AR-1262-4

R.T.: 7.429 min
 Delta R.T.: -0.013 min
 Response: 2144674241
 Conc: 13808.63 ng/ml



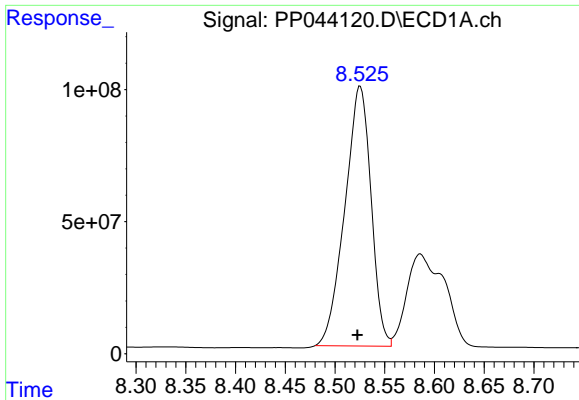
#40 AR-1262-5

R.T.: 9.288 min
 Delta R.T.: -0.015 min
 Response: 608796917
 Conc: 10932.14 ng/ml



#40 AR-1262-5

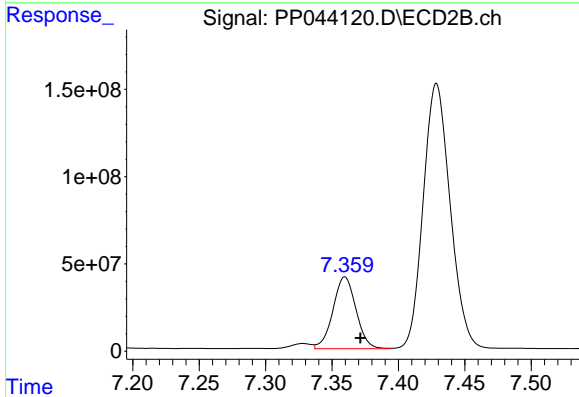
R.T.: 7.973 min
 Delta R.T.: -0.011 min
 Response: 672953373
 Conc: 8650.45 ng/ml



#41 AR-1268-1

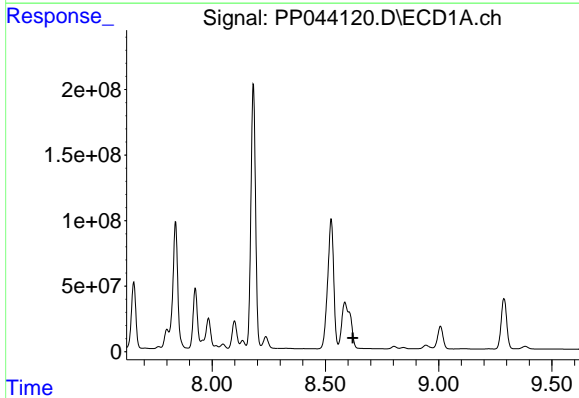
R.T.: 8.525 min
 Delta R.T.: 0.003 min
 Response: 1801750382
 Conc: 9242.85 ng/ml

Instrument :
 ECD_P
 ClientSampleId :



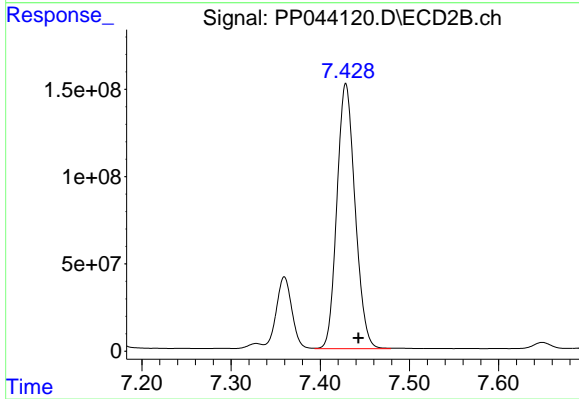
#41 AR-1268-1

R.T.: 7.360 min
 Delta R.T.: -0.012 min
 Response: 496871726
 Conc: 1961.12 ng/ml



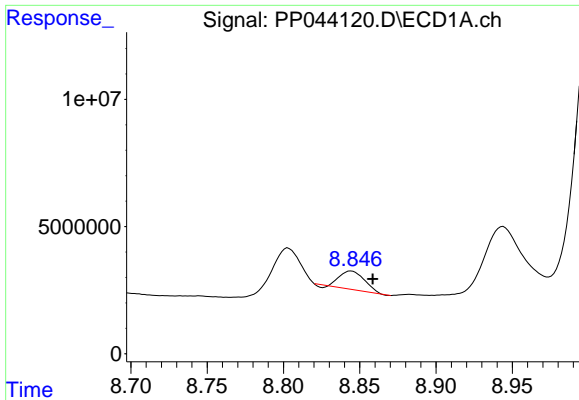
#42 AR-1268-2

R.T.: 0.000 min
 Exp R.T. : 8.621 min
 Response: 0
 Conc: N.D.



#42 AR-1268-2

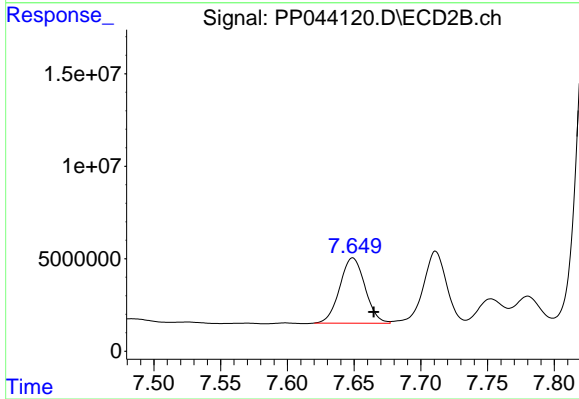
R.T.: 7.429 min
 Delta R.T.: -0.014 min
 Response: 2144674241
 Conc: 9491.29 ng/ml



#43 AR-1268-3

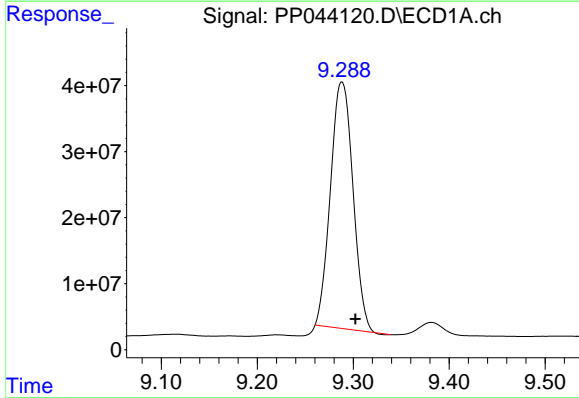
R.T.: 8.844 min
 Delta R.T.: -0.014 min
 Response: 8062161
 Conc: 52.23 ng/ml

Instrument :
 ECD_P
 ClientSampleId :



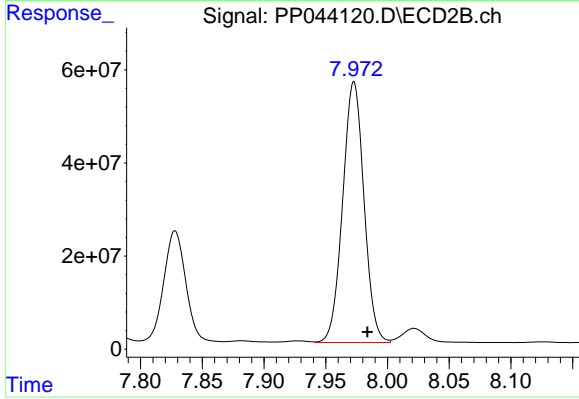
#43 AR-1268-3

R.T.: 7.649 min
 Delta R.T.: -0.016 min
 Response: 46509760
 Conc: 238.84 ng/ml



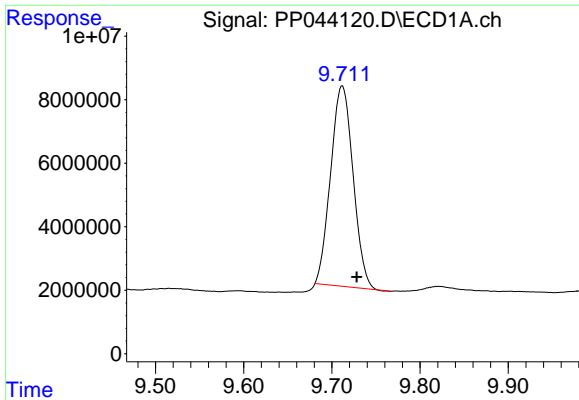
#44 AR-1268-4

R.T.: 9.288 min
 Delta R.T.: -0.014 min
 Response: 608796917
 Conc: 9729.84 ng/ml



#44 AR-1268-4

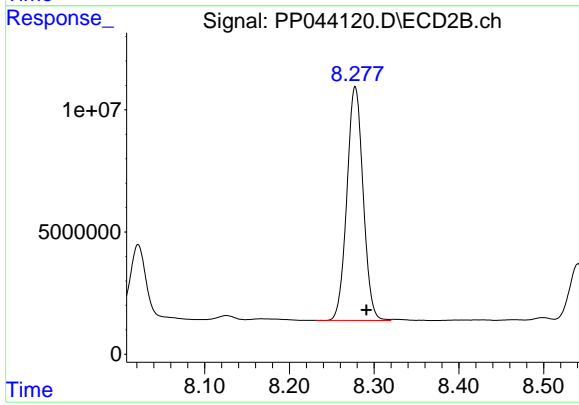
R.T.: 7.973 min
 Delta R.T.: -0.011 min
 Response: 672953373
 Conc: 7483.38 ng/ml



#45 AR-1268-5

R.T.: 9.712 min
Delta R.T.: -0.016 min
Response: 111675449
Conc: 245.74 ng/ml

Instrument :
ECD_P
ClientSampleId :



#45 AR-1268-5

R.T.: 8.278 min
Delta R.T.: -0.013 min
Response: 127376075
Conc: 211.98 ng/ml