

Data Path : Z:\pestpcbsrv\HPCHEM1\ECD_P\Data\PP030122\
 Data File : PP044146.D
 Signal(s) : Signal #1: ECD1A.ch Signal #2: ECD2B.ch
 Acq On : 01 Mar 2022 21:58
 Operator : YP\AJ
 Sample : N1715-18 10X
 Misc :
 ALS Vial : 32 Sample Multiplier: 1

Instrument :
 ECD_P
 ClientSampleId :

Integration File signal 1: autoint1.e
 Integration File signal 2: autoint2.e
 Quant Time: Mar 02 00:32:00 2022
 Quant Method : Z:\pestpcbsrv\HPCHEM1\ECD_P\methods\PP021022.M
 Quant Title : GC EXTRACTABLES
 QLast Update : Fri Feb 11 04:48:05 2022
 Response via : Initial Calibration
 Integrator: ChemStation

Volume Inj. : 2 µl
 Signal #1 Phase : ZB-MR1 Signal #2 Phase: ZB-MR2
 Signal #1 Info : 30Mx0.32mmx 0.50µ Signal #2 Info : 30M x 0.32mm x 0.25µm

Compound	RT#1	RT#2	Resp#1	Resp#2	ng/ml	ng/ml
System Monitoring Compounds						
1) SA Tetrachlo...	3.913	3.170	3279707	3844250	1.483	2.047 #
2) SA Decachlor...	10.052	8.541	2452161	2903220	2.064	1.789
Target Compounds						
3) L1 AR-1016-1	5.176	4.315	68063	161352	0.938	2.633 #
4) L1 AR-1016-2	5.188	4.332	233234	190117	2.211	2.250
5) L1 AR-1016-3	5.255	4.536	104660	23861	1.589	0.511 #
6) L1 AR-1016-4	5.368	4.567	31790	2154899	0.586	57.662 #
7) L1 AR-1016-5	5.681	4.791	961110	1193545	18.297	26.127 #
8) L2 AR-1221-1	4.134	3.400	192734	62794	7.570	2.632 #
9) L2 AR-1221-2	4.231	3.483	220612	167575	11.491	9.279
10) L2 AR-1221-3	4.327	3.576	201681	30202	3.511	0.585 #
11) L3 AR-1232-1	4.327	3.576	201681	30202	4.156	0.702 #
12) L3 AR-1232-2	4.894	4.332	39225	190117	1.655	5.326 #
13) L3 AR-1232-3	5.188	4.536	233234	23861	5.417	1.220 #
14) L3 AR-1232-4	5.368	4.609	31790	715927	1.456	41.401 #
15) L3 AR-1232-5	5.463	4.791	1770468	1193545	109.768	63.540 #
16) L4 AR-1242-1	5.176	4.315	68063	161352	1.211	3.310 #
17) L4 AR-1242-2	5.188	4.332	233234	190117	2.819	2.823
18) L4 AR-1242-3	5.255	4.536	104660	23861	2.022	0.636 #
19) L4 AR-1242-4	5.368	4.609	31790	715927	0.744	19.827 #
20) L4 AR-1242-5	6.165	5.168	1098278	4822548	25.434	112.027 #
21) L5 AR-1248-1	5.176	4.315	68063	161352	1.660	4.332 #
22) L5 AR-1248-2	5.463	4.567	1770468	2154899	31.163	44.048 #
23) L5 AR-1248-3	5.681	4.609	961110	715927	14.406	13.952
24) L5 AR-1248-4	6.121	4.791	1575692	1193545	22.553	20.359
25) L5 AR-1248-5	6.165	5.210	1098278	544782	15.887	9.508 #
26) L6 AR-1254-1	6.092	5.168	3439810	4822548	45.526	55.220
27) L6 AR-1254-2	6.331	5.329	5161241	4581755	46.013	60.067 #
28) L6 AR-1254-3	6.731	5.761	5109047	6629898	44.153	54.096
29) L6 AR-1254-4	7.046	6.010	3988162	4927872	49.956	62.437
30) L6 AR-1254-5	7.507	6.463	4870702	7317151	56.793	63.273
31) L7 AR-1260-1	6.911	5.902	2279775	3851201	27.224	48.158 #
32) L7 AR-1260-2	7.197	6.108	2322847	3673370	25.661	37.617 #
33) L7 AR-1260-3	7.608	6.269	27434	3194416	0.378	34.991 #
34) L7 AR-1260-4	7.823f	6.784	2138715	386230	24.910	4.774 #
35) L7 AR-1260-5	8.182	7.051	941838	1041341	6.076	5.633
36) L8 AR-1262-1	7.608	6.536f	27434	587274	0.278	5.342 #
37) L8 AR-1262-2	8.203	6.784	57907	386230	0.359	3.786 #
38) L8 AR-1262-3	8.527	7.357f	715769	130536	6.543	1.532 #
39) L8 AR-1262-4	8.603f	7.427f	303428	1125042	6.327	7.244
40) L8 AR-1262-5	9.290	7.986	31353	60320	0.563	0.775 #
41) L9 AR-1268-1	8.527	7.357	715769	130536	3.672	0.515 #

Data Path : Z:\pestpcbsrv\HPCHEM1\ECD_P\Data\PP030122\
 Data File : PP044146.D
 Signal(s) : Signal #1: ECD1A.ch Signal #2: ECD2B.ch
 Acq On : 01 Mar 2022 21:58
 Operator : YP\AJ
 Sample : N1715-18 10X
 Misc :
 ALS Vial : 32 Sample Multiplier: 1

Instrument :
 ECD_P
 ClientSampleId :

Integration File signal 1: autoint1.e
 Integration File signal 2: autoint2.e
 Quant Time: Mar 02 00:32:00 2022
 Quant Method : Z:\pestpcbsrv\HPCHEM1\ECD_P\methods\PP021022.M
 Quant Title : GC EXTRACTABLES
 QLast Update : Fri Feb 11 04:48:05 2022
 Response via : Initial Calibration
 Integrator: ChemStation

Volume Inj. : 2 µl
 Signal #1 Phase : ZB-MR1 Signal #2 Phase: ZB-MR2
 Signal #1 Info : 30Mx0.32mmx 0.50µ Signal #2 Info : 30M x 0.32mm x 0.25µm

	Compound	RT#1	RT#2	Resp#1	Resp#2	ng/ml	ng/ml
42)	L9 AR-1268-2	8.603f	7.427f	303428	1125042	1.733	4.979 #
43)	L9 AR-1268-3	8.845	7.667	39989	71238	0.259	0.366 #
44)	L9 AR-1268-4	9.290	7.986	31353	60320	0.501	0.671 #
45)	L9 AR-1268-5	9.730	8.291	35430	20504	0.078	0.034 #

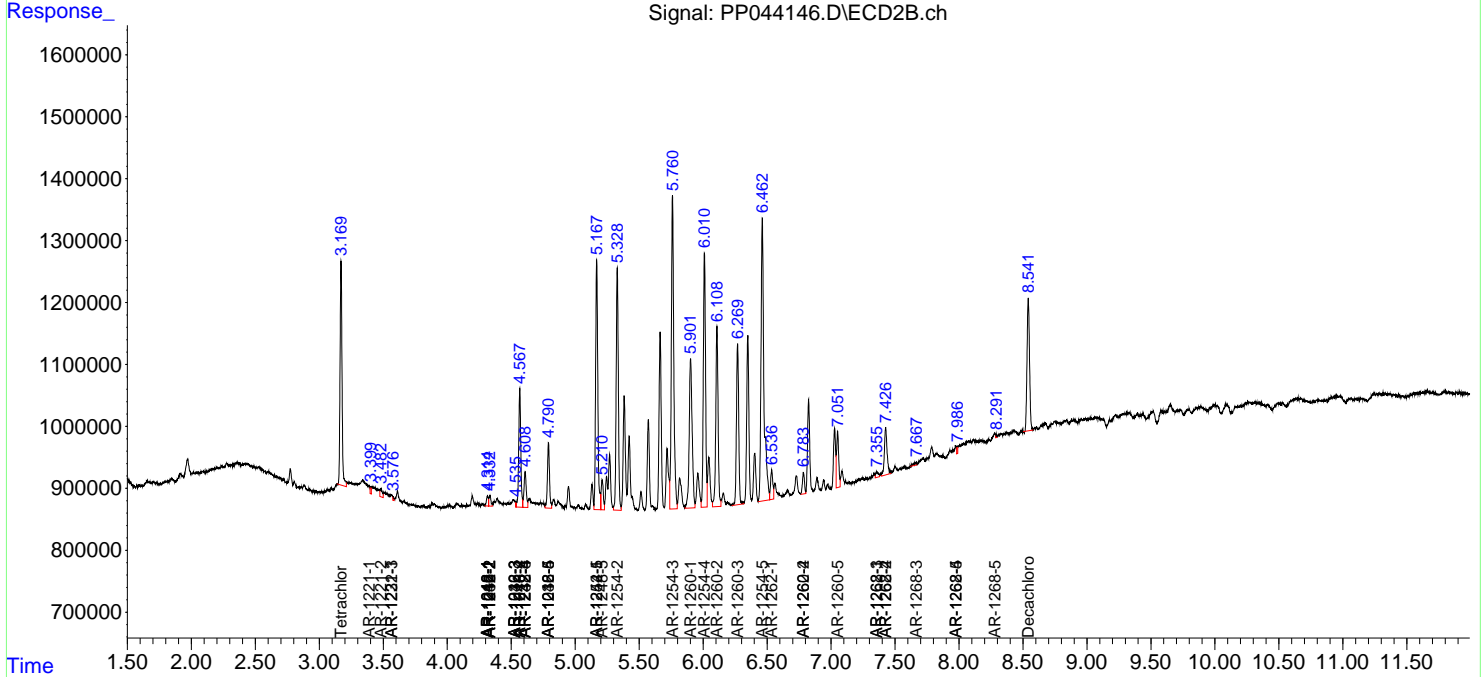
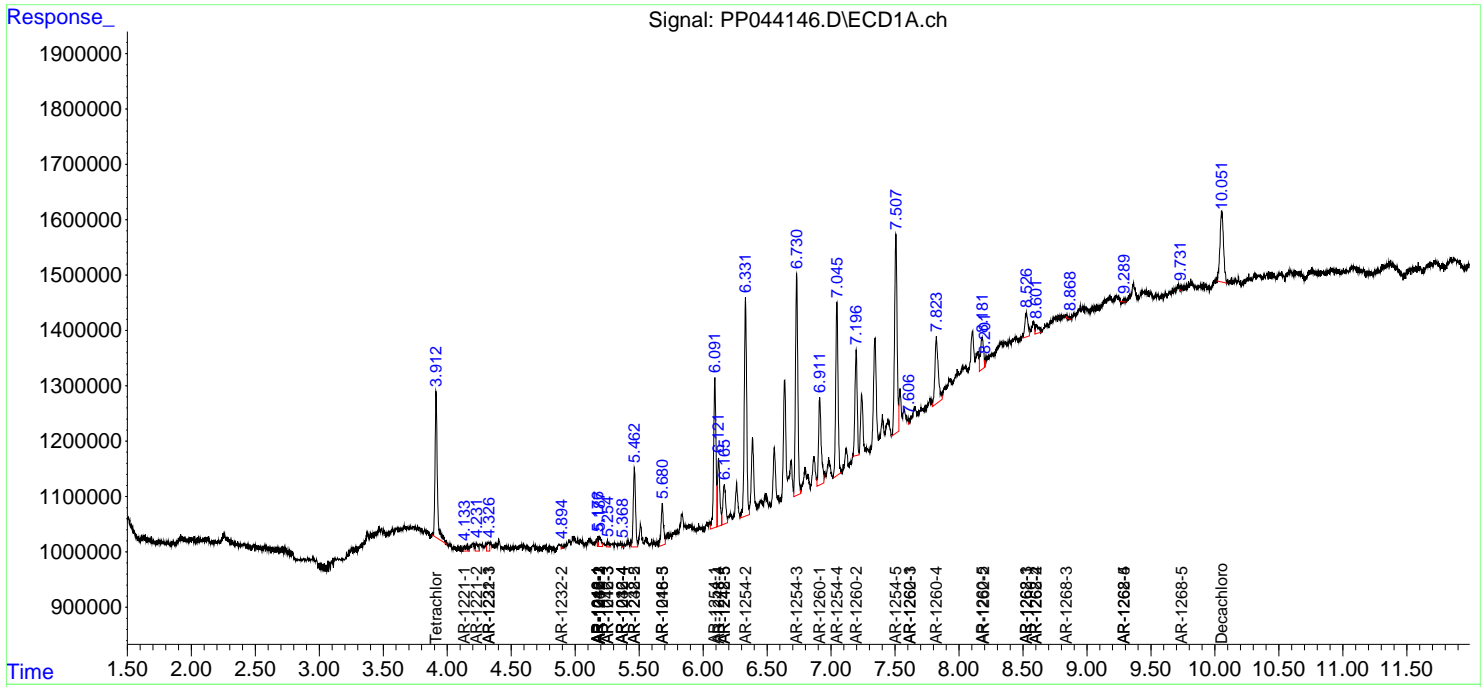
(f)=RT Delta > 1/2 Window (#)=Amounts differ by > 25% (m)=manual int.

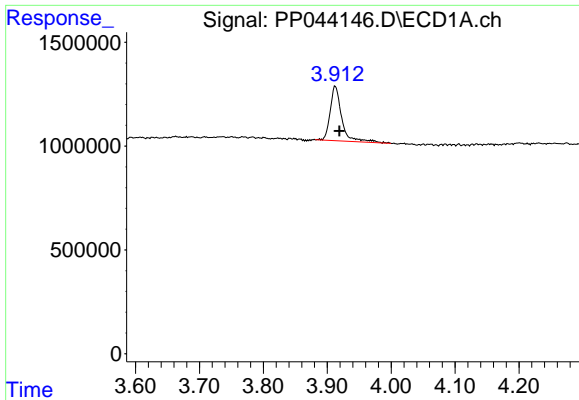
Data Path : Z:\pestpcbsrv\HPCHEM1\ECD_P\Data\PP030122\
 Data File : PP044146.D
 Signal(s) : Signal #1: ECD1A.ch Signal #2: ECD2B.ch
 Acq On : 01 Mar 2022 21:58
 Operator : YP\AJ
 Sample : N1715-18 10X
 Misc :
 ALS Vial : 32 Sample Multiplier: 1

Instrument :
 ECD_P
 ClientSampleId :

Integration File signal 1: autoint1.e
 Integration File signal 2: autoint2.e
 Quant Time: Mar 02 00:32:00 2022
 Quant Method : Z:\pestpcbsrv\HPCHEM1\ECD_P\methods\PP021022.M
 Quant Title : GC EXTRACTABLES
 QLast Update : Fri Feb 11 04:48:05 2022
 Response via : Initial Calibration
 Integrator: ChemStation

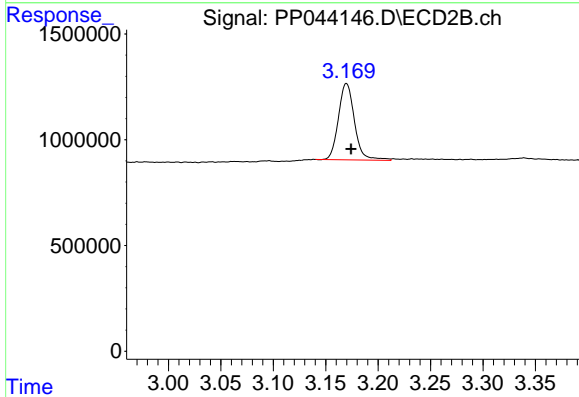
Volume Inj. : 2 µl
 Signal #1 Phase : ZB-MR1 Signal #2 Phase: ZB-MR2
 Signal #1 Info : 30Mx0.32mmx 0.50µ Signal #2 Info : 30M x 0.32mm x 0.25µm



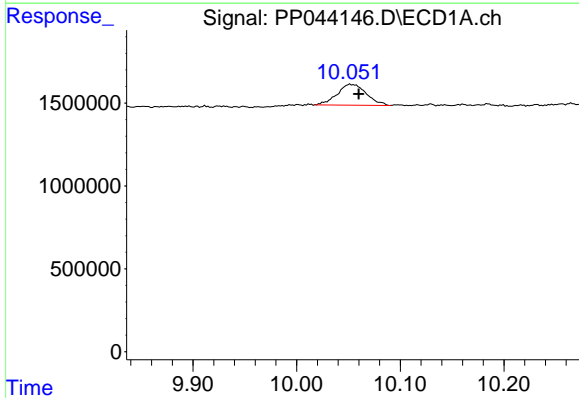


#1 Tetrachloro-m-xylene
 R.T.: 3.913 min
 Delta R.T.: -0.006 min
 Response: 3279707
 Conc: 1.48 ng/ml

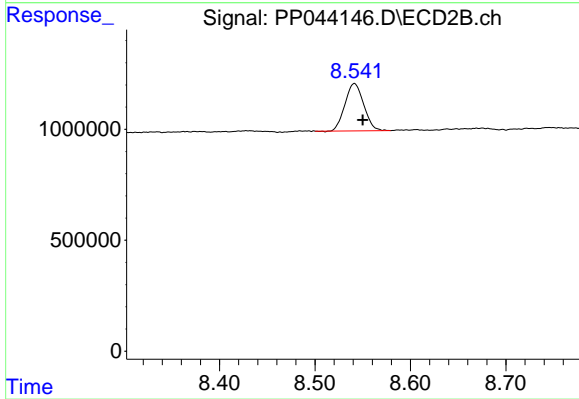
Instrument :
 ECD_P
 ClientSampleId :



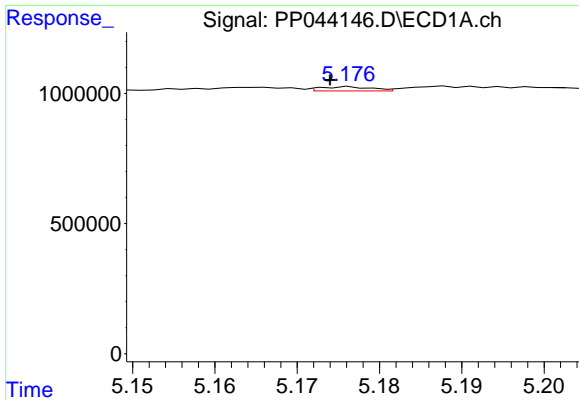
#1 Tetrachloro-m-xylene
 R.T.: 3.170 min
 Delta R.T.: -0.004 min
 Response: 3844250
 Conc: 2.05 ng/ml



#2 Decachlorobiphenyl
 R.T.: 10.052 min
 Delta R.T.: -0.008 min
 Response: 2452161
 Conc: 2.06 ng/ml



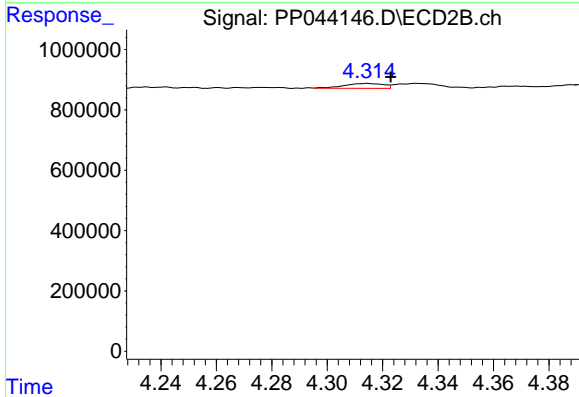
#2 Decachlorobiphenyl
 R.T.: 8.541 min
 Delta R.T.: -0.009 min
 Response: 2903220
 Conc: 1.79 ng/ml



#3 AR-1016-1

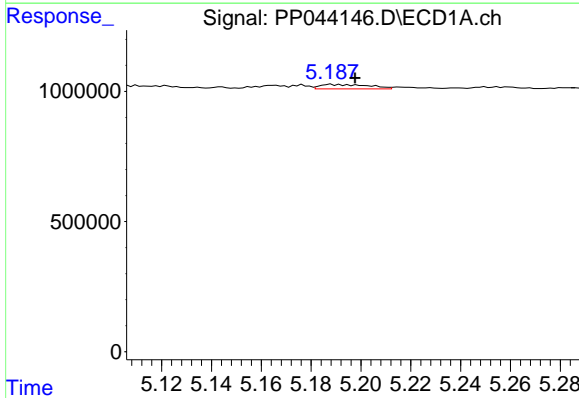
R.T.: 5.176 min
 Delta R.T.: 0.002 min
 Response: 68063
 Conc: 0.94 ng/ml

Instrument :
 ECD_P
 ClientSampleId :



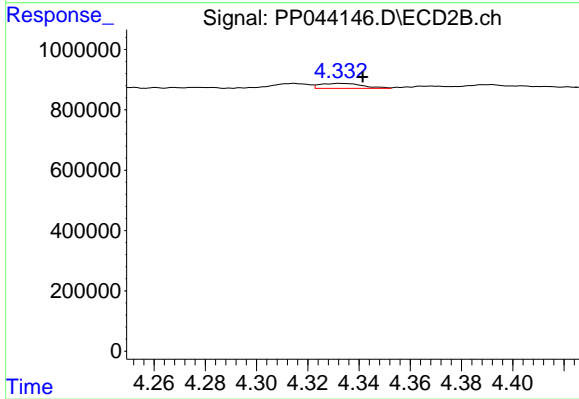
#3 AR-1016-1

R.T.: 4.315 min
 Delta R.T.: -0.008 min
 Response: 161352
 Conc: 2.63 ng/ml



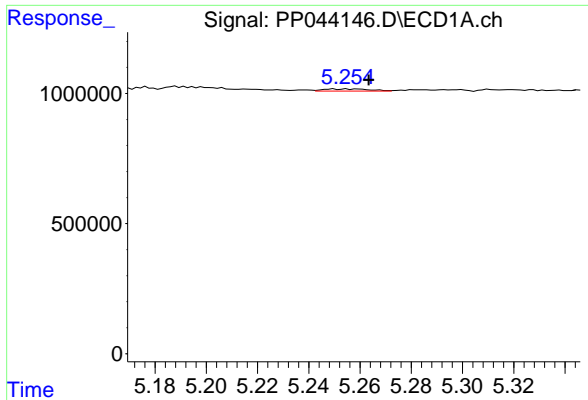
#4 AR-1016-2

R.T.: 5.188 min
 Delta R.T.: -0.010 min
 Response: 233234
 Conc: 2.21 ng/ml



#4 AR-1016-2

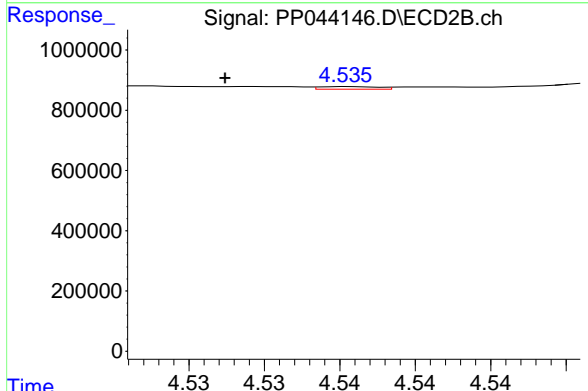
R.T.: 4.332 min
 Delta R.T.: -0.009 min
 Response: 190117
 Conc: 2.25 ng/ml



#5 AR-1016-3

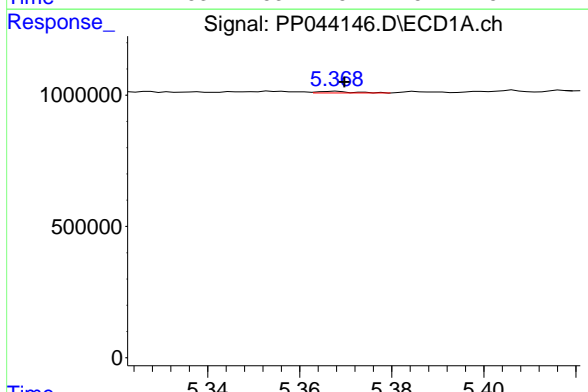
R.T.: 5.255 min
 Delta R.T.: -0.008 min
 Response: 104660
 Conc: 1.59 ng/ml

Instrument :
 ECD_P
 ClientSampleId :



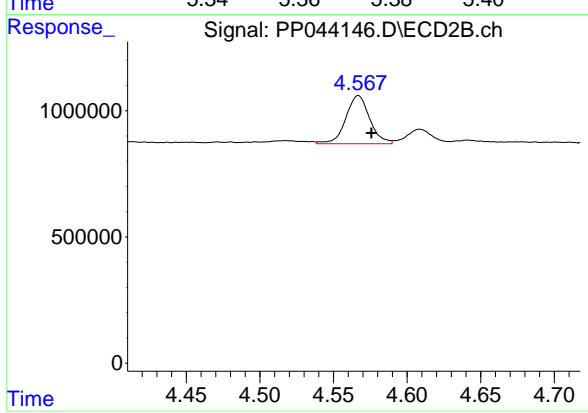
#5 AR-1016-3

R.T.: 4.536 min
 Delta R.T.: 0.008 min
 Response: 23861
 Conc: 0.51 ng/ml



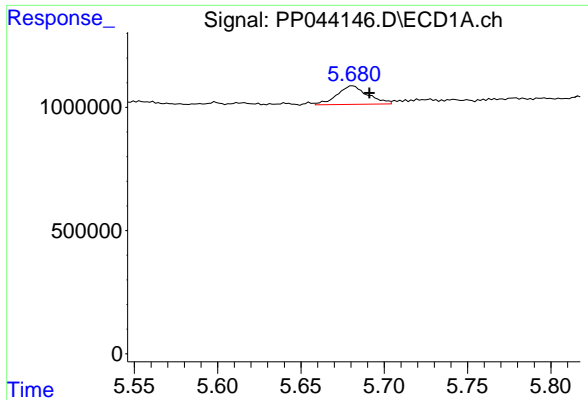
#6 AR-1016-4

R.T.: 5.368 min
 Delta R.T.: -0.002 min
 Response: 31790
 Conc: 0.59 ng/ml



#6 AR-1016-4

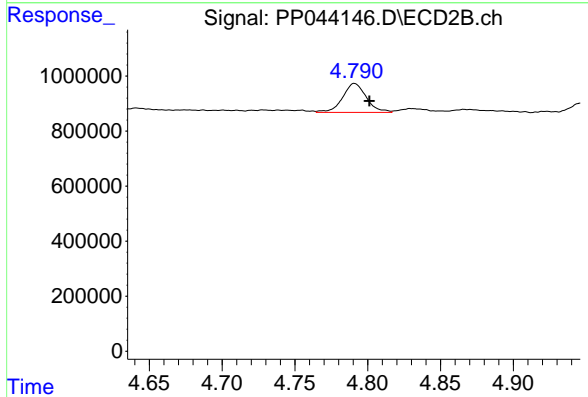
R.T.: 4.567 min
 Delta R.T.: -0.009 min
 Response: 2154899
 Conc: 57.66 ng/ml



#7 AR-1016-5

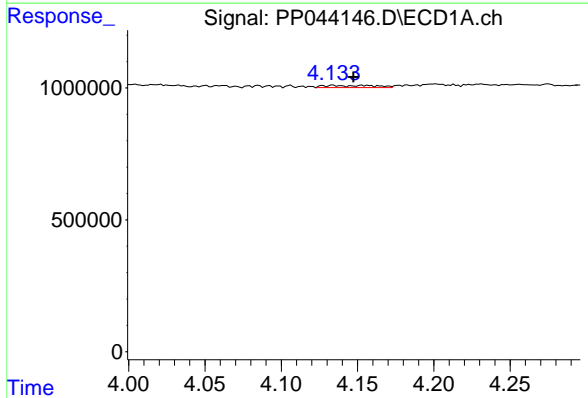
R.T.: 5.681 min
 Delta R.T.: -0.010 min
 Response: 961110
 Conc: 18.30 ng/ml

Instrument :
 ECD_P
 ClientSampleId :



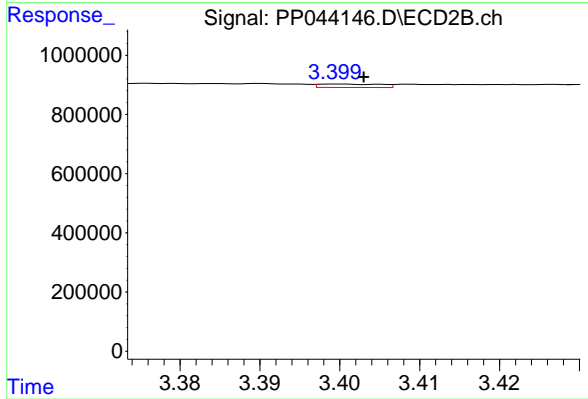
#7 AR-1016-5

R.T.: 4.791 min
 Delta R.T.: -0.010 min
 Response: 1193545
 Conc: 26.13 ng/ml



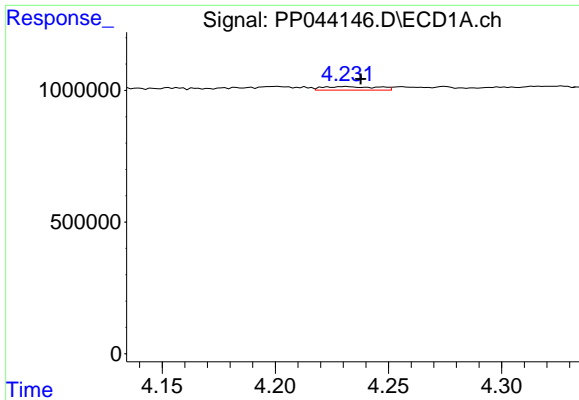
#8 AR-1221-1

R.T.: 4.134 min
 Delta R.T.: -0.013 min
 Response: 192734
 Conc: 7.57 ng/ml



#8 AR-1221-1

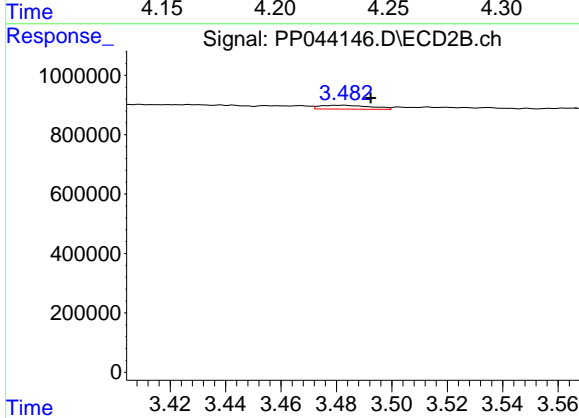
R.T.: 3.400 min
 Delta R.T.: -0.003 min
 Response: 62794
 Conc: 2.63 ng/ml



#9 AR-1221-2

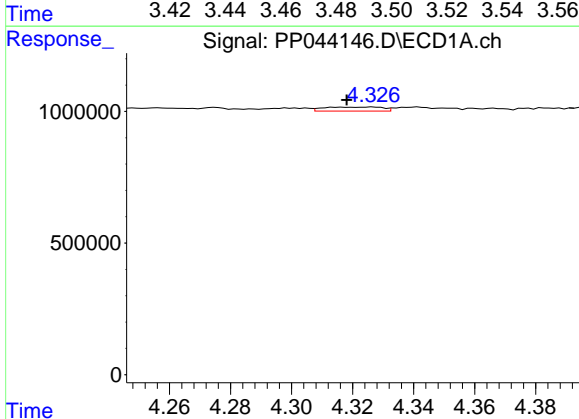
R.T.: 4.231 min
 Delta R.T.: -0.007 min
 Response: 220612
 Conc: 11.49 ng/ml

Instrument :
 ECD_P
 ClientSampleId :



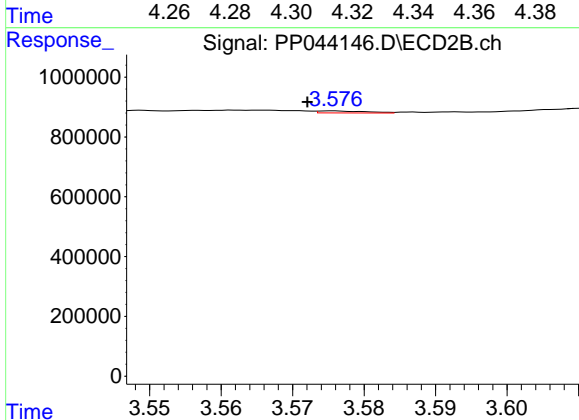
#9 AR-1221-2

R.T.: 3.483 min
 Delta R.T.: -0.010 min
 Response: 167575
 Conc: 9.28 ng/ml



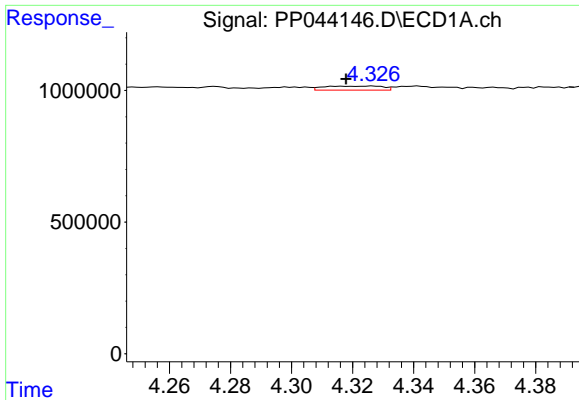
#10 AR-1221-3

R.T.: 4.327 min
 Delta R.T.: 0.009 min
 Response: 201681
 Conc: 3.51 ng/ml



#10 AR-1221-3

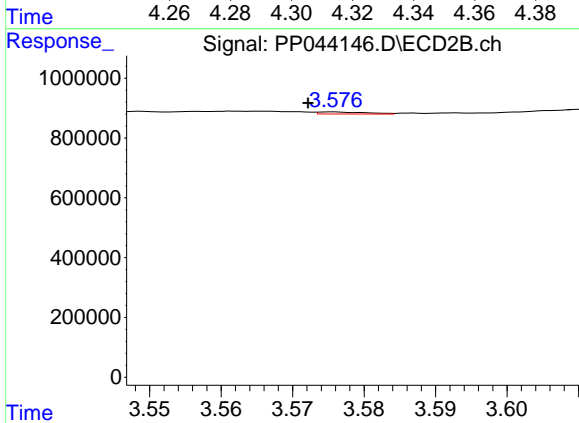
R.T.: 3.576 min
 Delta R.T.: 0.004 min
 Response: 30202
 Conc: 0.59 ng/ml



#11 AR-1232-1

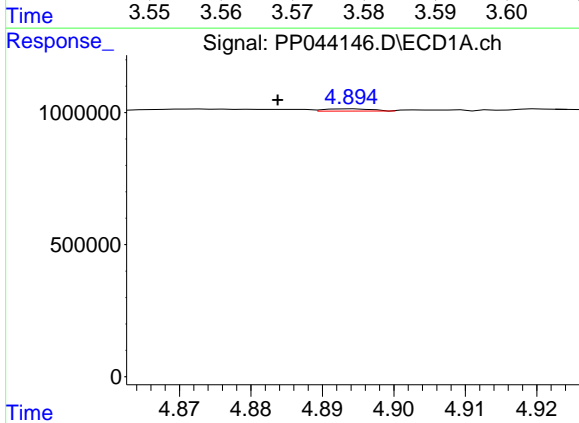
R.T.: 4.327 min
 Delta R.T.: 0.009 min
 Response: 201681
 Conc: 4.16 ng/ml

Instrument :
 ECD_P
 ClientSampleId :



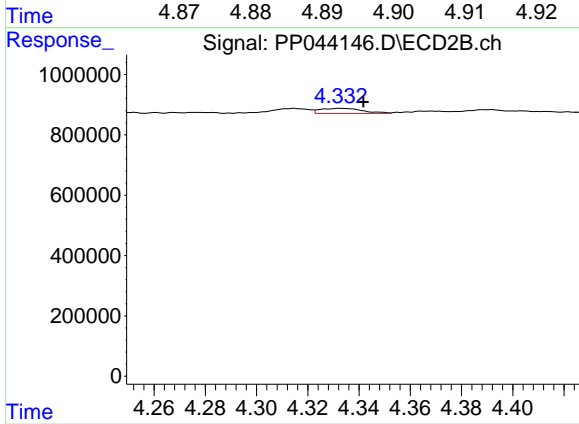
#11 AR-1232-1

R.T.: 3.576 min
 Delta R.T.: 0.003 min
 Response: 30202
 Conc: 0.70 ng/ml



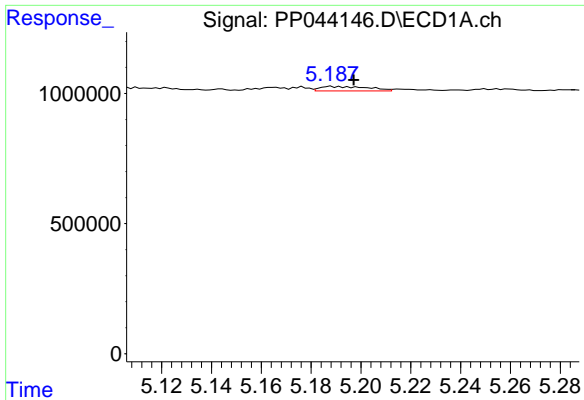
#12 AR-1232-2

R.T.: 4.894 min
 Delta R.T.: 0.010 min
 Response: 39225
 Conc: 1.66 ng/ml



#12 AR-1232-2

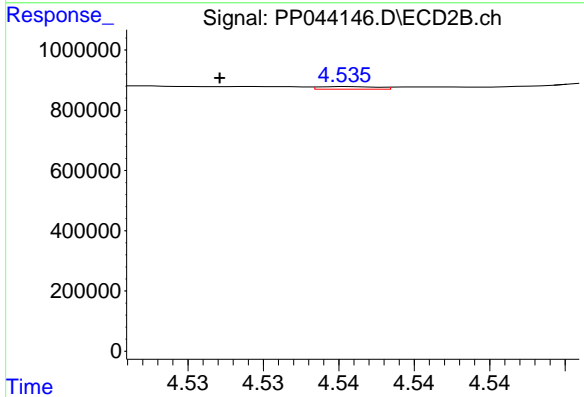
R.T.: 4.332 min
 Delta R.T.: -0.009 min
 Response: 190117
 Conc: 5.33 ng/ml



#13 AR-1232-3

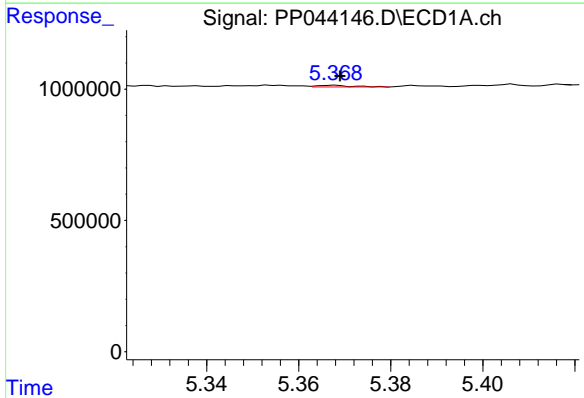
R.T.: 5.188 min
 Delta R.T.: -0.009 min
 Response: 233234
 Conc: 5.42 ng/ml

Instrument :
 ECD_P
 ClientSampleId :



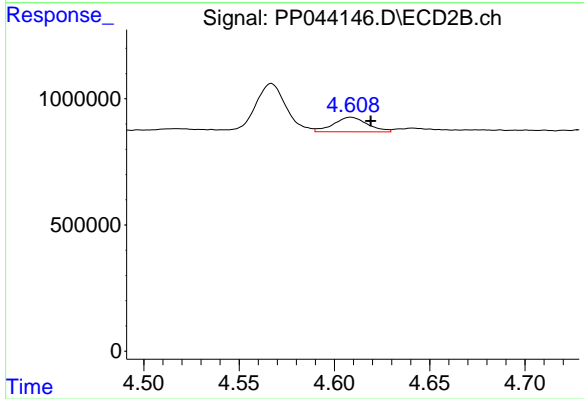
#13 AR-1232-3

R.T.: 4.536 min
 Delta R.T.: 0.008 min
 Response: 23861
 Conc: 1.22 ng/ml



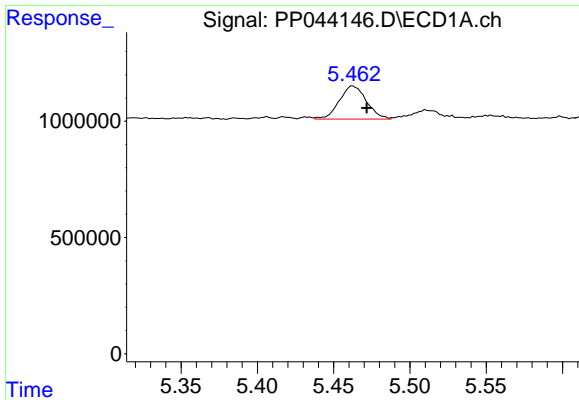
#14 AR-1232-4

R.T.: 5.368 min
 Delta R.T.: -0.001 min
 Response: 31790
 Conc: 1.46 ng/ml



#14 AR-1232-4

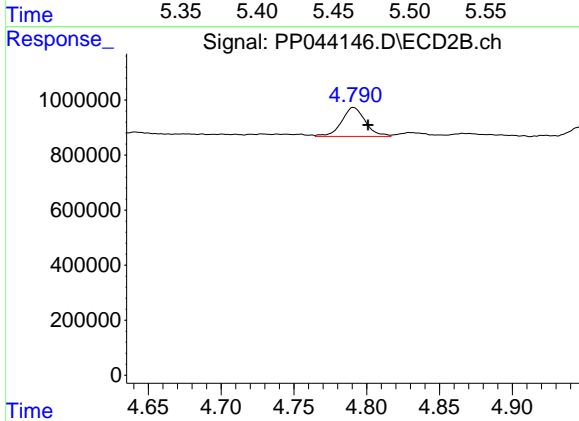
R.T.: 4.609 min
 Delta R.T.: -0.010 min
 Response: 715927
 Conc: 41.40 ng/ml



#15 AR-1232-5

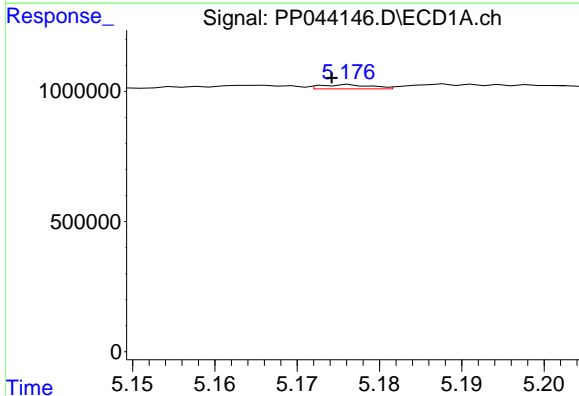
R.T.: 5.463 min
 Delta R.T.: -0.009 min
 Response: 1770468
 Conc: 109.77 ng/ml

Instrument :
 ECD_P
 ClientSampleId :



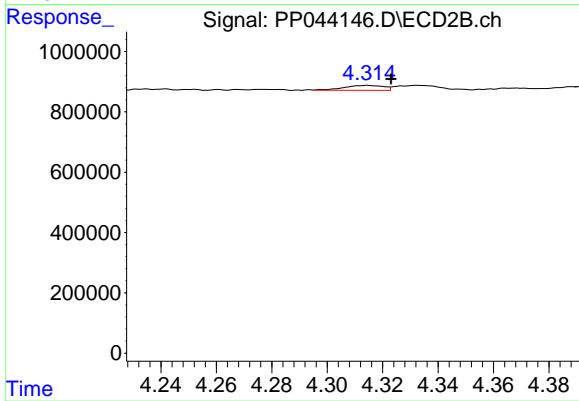
#15 AR-1232-5

R.T.: 4.791 min
 Delta R.T.: -0.010 min
 Response: 1193545
 Conc: 63.54 ng/ml



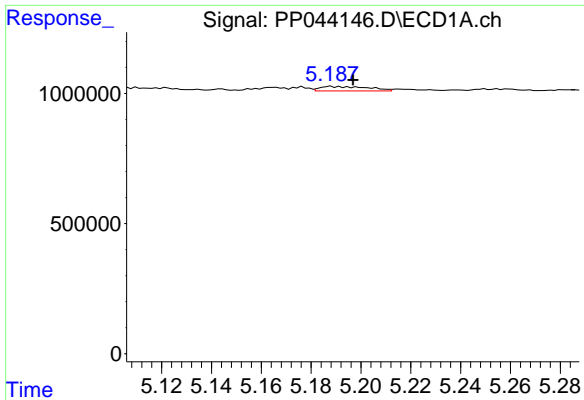
#16 AR-1242-1

R.T.: 5.176 min
 Delta R.T.: 0.002 min
 Response: 68063
 Conc: 1.21 ng/ml



#16 AR-1242-1

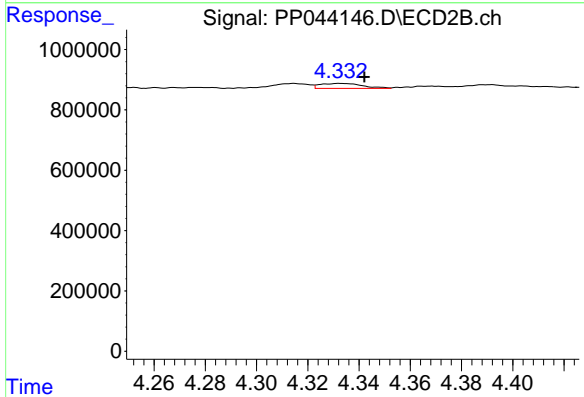
R.T.: 4.315 min
 Delta R.T.: -0.008 min
 Response: 161352
 Conc: 3.31 ng/ml



#17 AR-1242-2

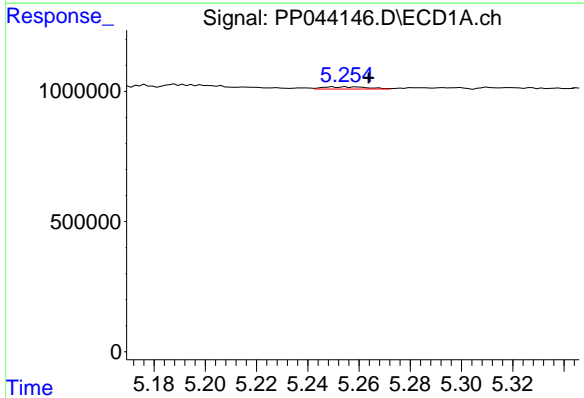
R.T.: 5.188 min
 Delta R.T.: -0.009 min
 Response: 233234
 Conc: 2.82 ng/ml

Instrument :
 ECD_P
 ClientSampleId :



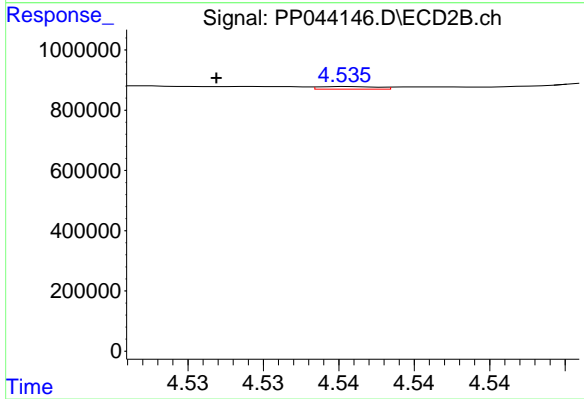
#17 AR-1242-2

R.T.: 4.332 min
 Delta R.T.: -0.010 min
 Response: 190117
 Conc: 2.82 ng/ml



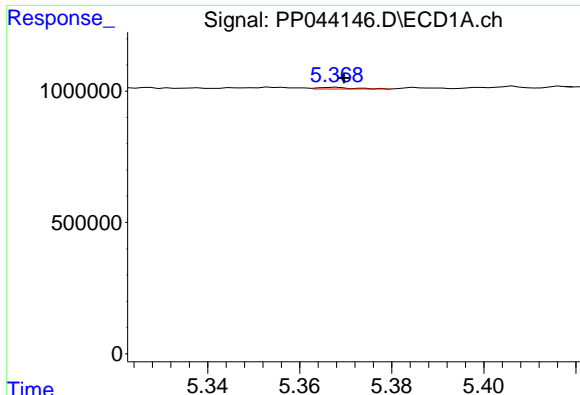
#18 AR-1242-3

R.T.: 5.255 min
 Delta R.T.: -0.009 min
 Response: 104660
 Conc: 2.02 ng/ml



#18 AR-1242-3

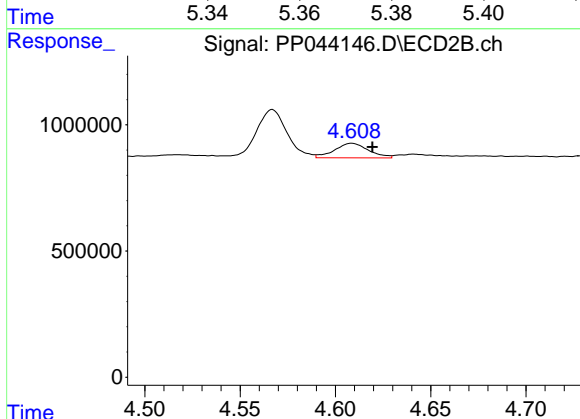
R.T.: 4.536 min
 Delta R.T.: 0.009 min
 Response: 23861
 Conc: 0.64 ng/ml



#19 AR-1242-4

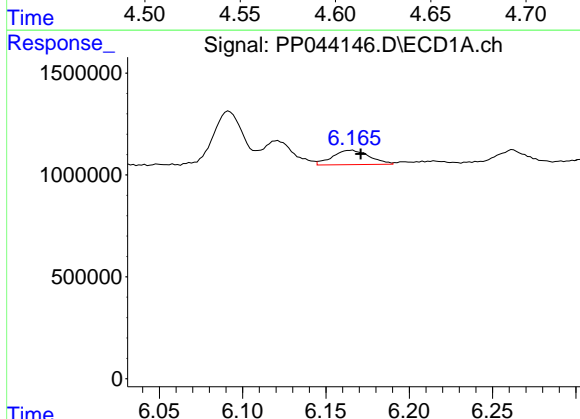
R.T.: 5.368 min
 Delta R.T.: -0.002 min
 Response: 31790
 Conc: 0.74 ng/ml

Instrument :
 ECD_P
 ClientSampleId :



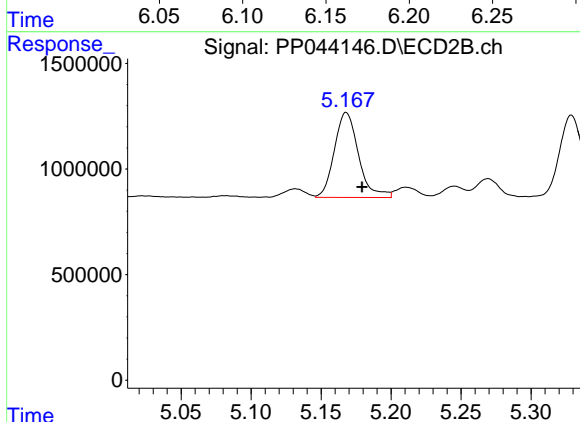
#19 AR-1242-4

R.T.: 4.609 min
 Delta R.T.: -0.011 min
 Response: 715927
 Conc: 19.83 ng/ml



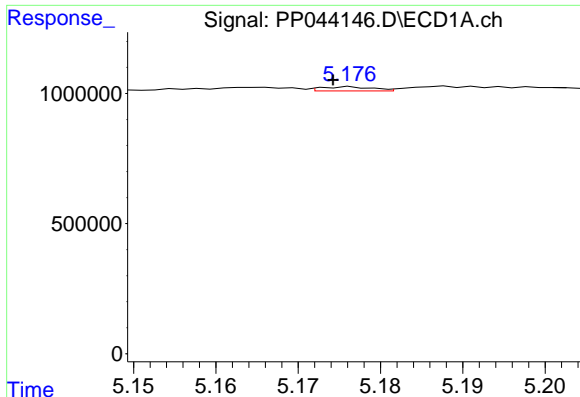
#20 AR-1242-5

R.T.: 6.165 min
 Delta R.T.: -0.006 min
 Response: 1098278
 Conc: 25.43 ng/ml



#20 AR-1242-5

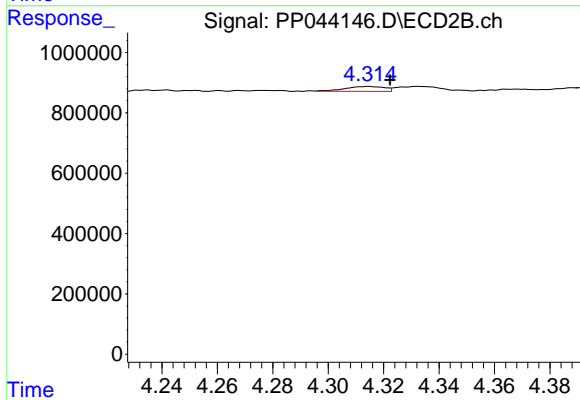
R.T.: 5.168 min
 Delta R.T.: -0.011 min
 Response: 4822548
 Conc: 112.03 ng/ml



#21 AR-1248-1

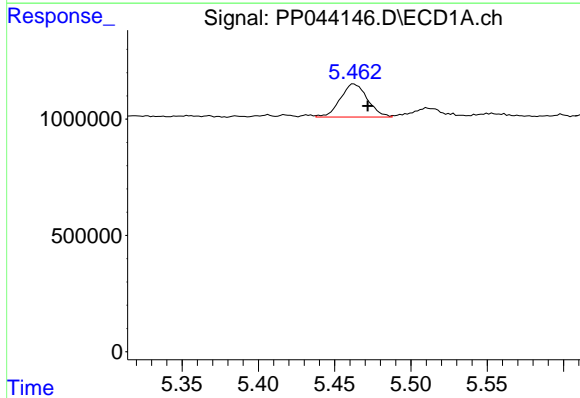
R.T.: 5.176 min
 Delta R.T.: 0.002 min
 Response: 68063
 Conc: 1.66 ng/ml

Instrument :
 ECD_P
 ClientSampleId :



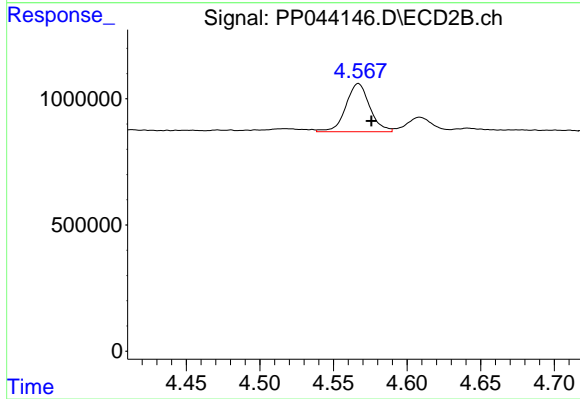
#21 AR-1248-1

R.T.: 4.315 min
 Delta R.T.: -0.008 min
 Response: 161352
 Conc: 4.33 ng/ml



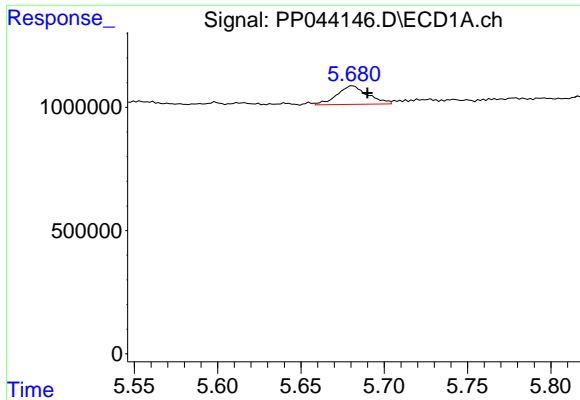
#22 AR-1248-2

R.T.: 5.463 min
 Delta R.T.: -0.009 min
 Response: 1770468
 Conc: 31.16 ng/ml



#22 AR-1248-2

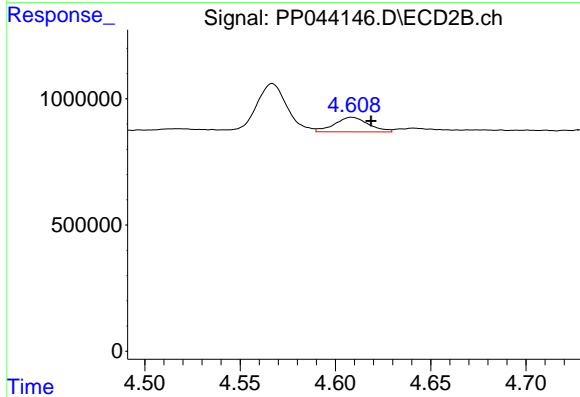
R.T.: 4.567 min
 Delta R.T.: -0.009 min
 Response: 2154899
 Conc: 44.05 ng/ml



#23 AR-1248-3

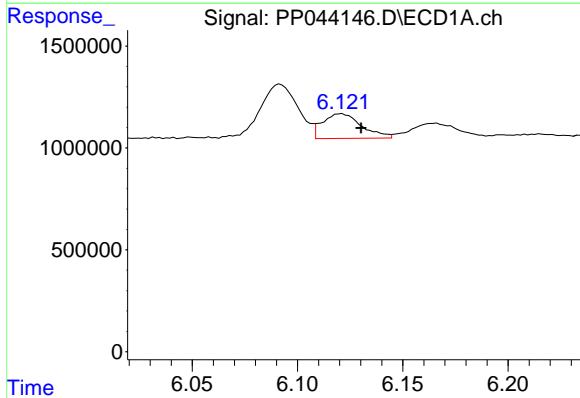
R.T.: 5.681 min
 Delta R.T.: -0.009 min
 Response: 961110
 Conc: 14.41 ng/ml

Instrument :
 ECD_P
 ClientSampleId :



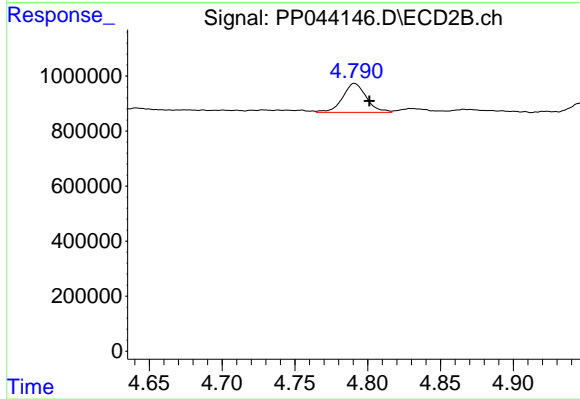
#23 AR-1248-3

R.T.: 4.609 min
 Delta R.T.: -0.010 min
 Response: 715927
 Conc: 13.95 ng/ml



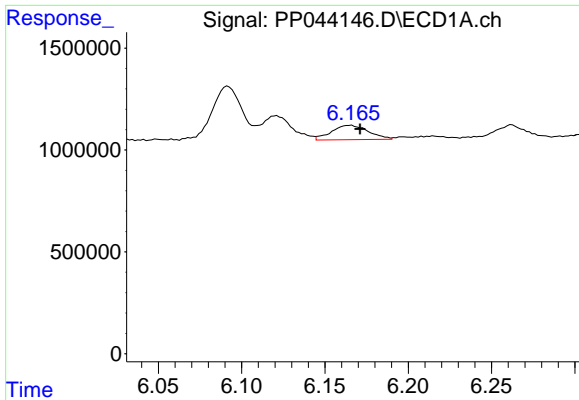
#24 AR-1248-4

R.T.: 6.121 min
 Delta R.T.: -0.010 min
 Response: 1575692
 Conc: 22.55 ng/ml



#24 AR-1248-4

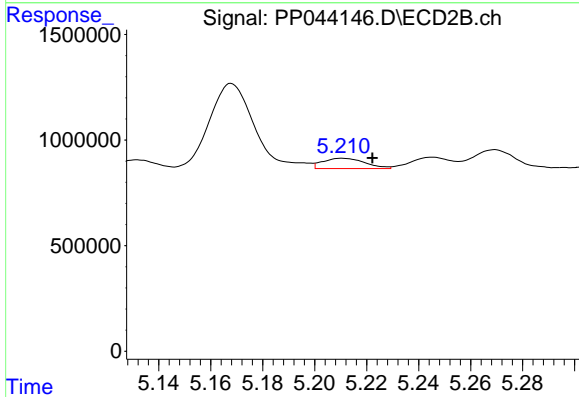
R.T.: 4.791 min
 Delta R.T.: -0.010 min
 Response: 1193545
 Conc: 20.36 ng/ml



#25 AR-1248-5

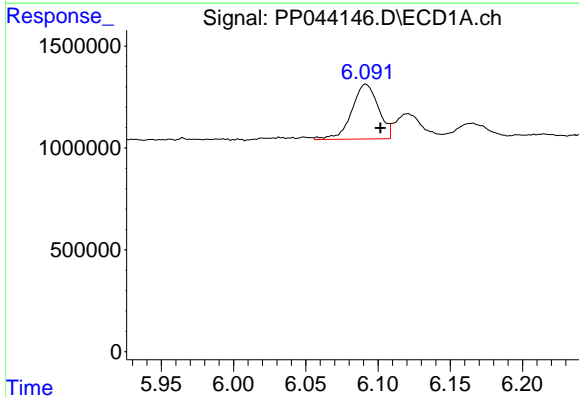
R.T.: 6.165 min
 Delta R.T.: -0.006 min
 Response: 1098278
 Conc: 15.89 ng/ml

Instrument :
 ECD_P
 ClientSampleId :



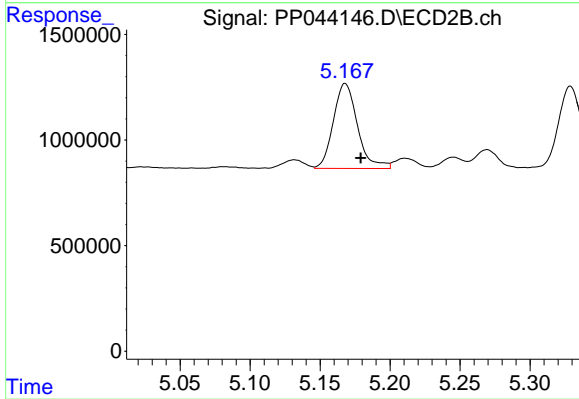
#25 AR-1248-5

R.T.: 5.210 min
 Delta R.T.: -0.012 min
 Response: 544782
 Conc: 9.51 ng/ml



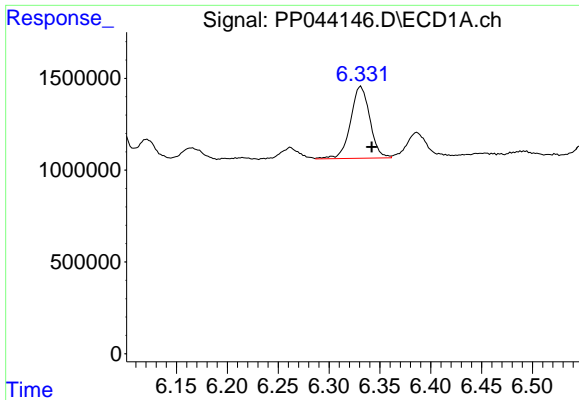
#26 AR-1254-1

R.T.: 6.092 min
 Delta R.T.: -0.010 min
 Response: 3439810
 Conc: 45.53 ng/ml



#26 AR-1254-1

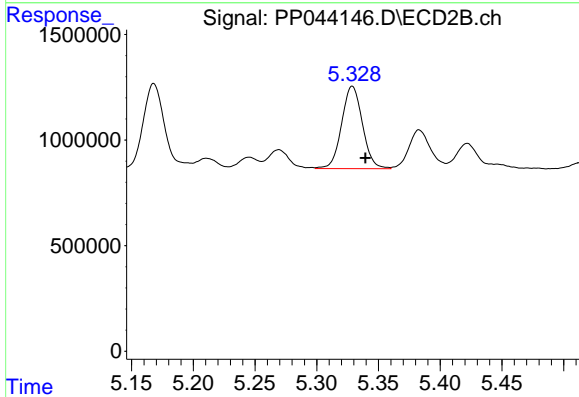
R.T.: 5.168 min
 Delta R.T.: -0.011 min
 Response: 4822548
 Conc: 55.22 ng/ml



#27 AR-1254-2

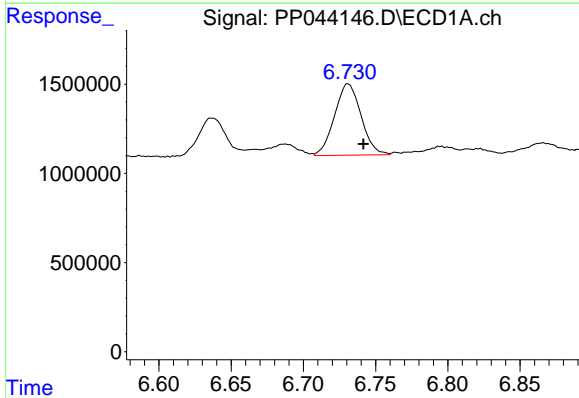
R.T.: 6.331 min
 Delta R.T.: -0.011 min
 Response: 5161241
 Conc: 46.01 ng/ml

Instrument :
 ECD_P
 ClientSampleId :



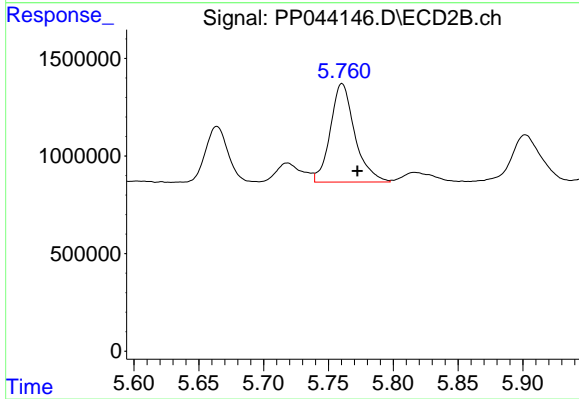
#27 AR-1254-2

R.T.: 5.329 min
 Delta R.T.: -0.011 min
 Response: 4581755
 Conc: 60.07 ng/ml



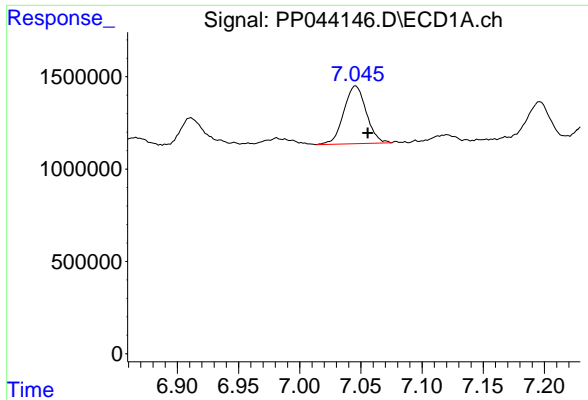
#28 AR-1254-3

R.T.: 6.731 min
 Delta R.T.: -0.010 min
 Response: 5109047
 Conc: 44.15 ng/ml



#28 AR-1254-3

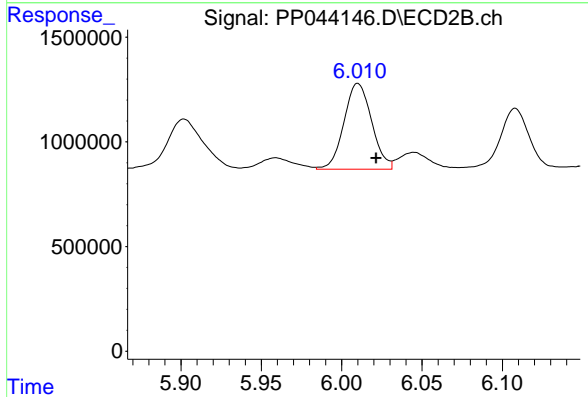
R.T.: 5.761 min
 Delta R.T.: -0.012 min
 Response: 6629898
 Conc: 54.10 ng/ml



#29 AR-1254-4

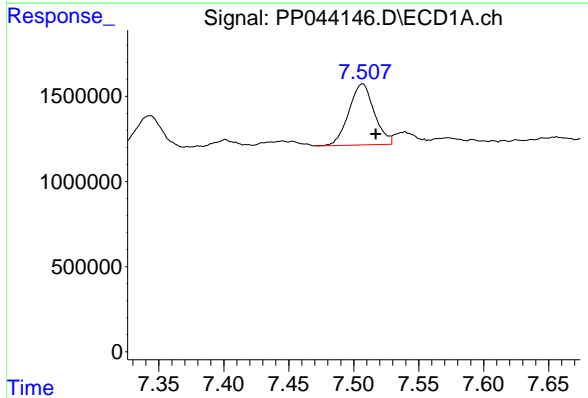
R.T.: 7.046 min
 Delta R.T.: -0.010 min
 Response: 3988162
 Conc: 49.96 ng/ml

Instrument :
 ECD_P
 ClientSampleId :



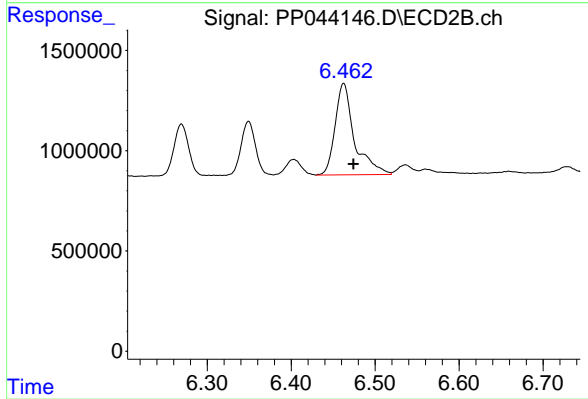
#29 AR-1254-4

R.T.: 6.010 min
 Delta R.T.: -0.011 min
 Response: 4927872
 Conc: 62.44 ng/ml



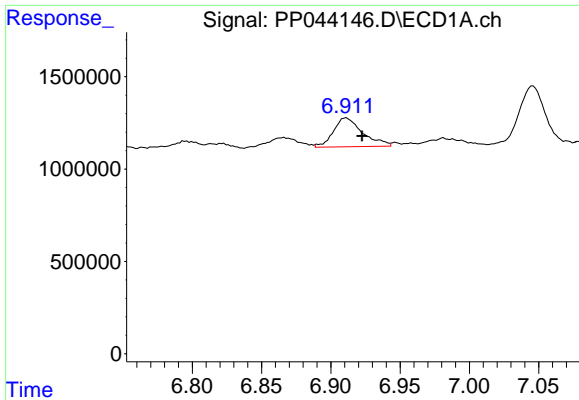
#30 AR-1254-5

R.T.: 7.507 min
 Delta R.T.: -0.010 min
 Response: 4870702
 Conc: 56.79 ng/ml



#30 AR-1254-5

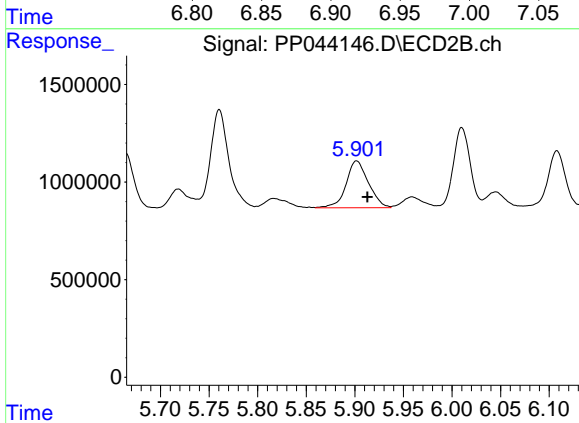
R.T.: 6.463 min
 Delta R.T.: -0.012 min
 Response: 7317151
 Conc: 63.27 ng/ml



#31 AR-1260-1

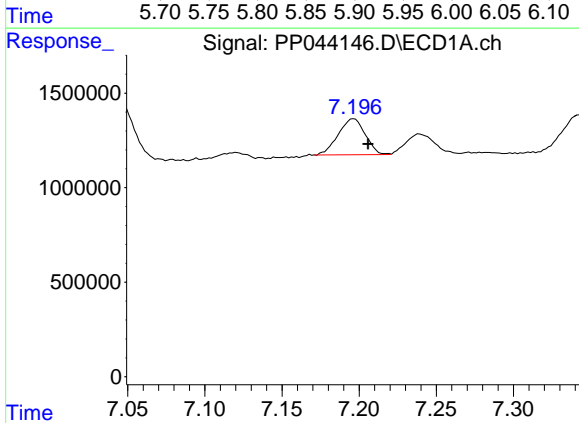
R.T.: 6.911 min
 Delta R.T.: -0.012 min
 Response: 2279775
 Conc: 27.22 ng/ml

Instrument :
 ECD_P
 ClientSampleId :



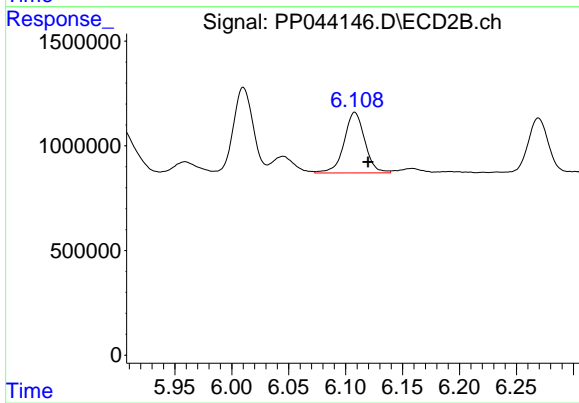
#31 AR-1260-1

R.T.: 5.902 min
 Delta R.T.: -0.011 min
 Response: 3851201
 Conc: 48.16 ng/ml



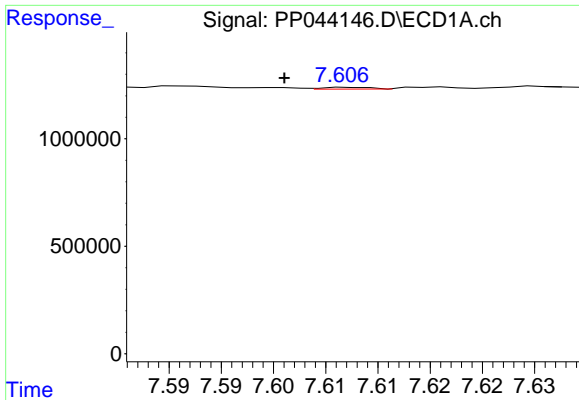
#32 AR-1260-2

R.T.: 7.197 min
 Delta R.T.: -0.009 min
 Response: 2322847
 Conc: 25.66 ng/ml



#32 AR-1260-2

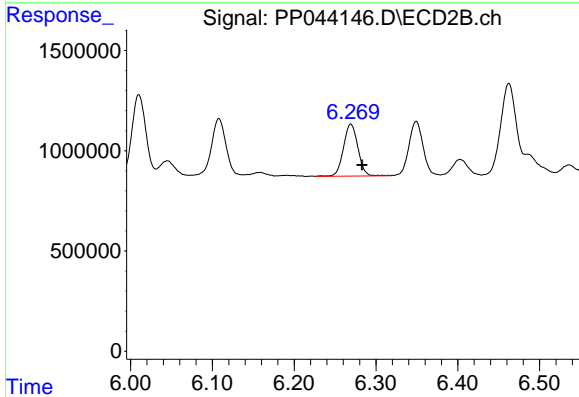
R.T.: 6.108 min
 Delta R.T.: -0.012 min
 Response: 3673370
 Conc: 37.62 ng/ml



#33 AR-1260-3

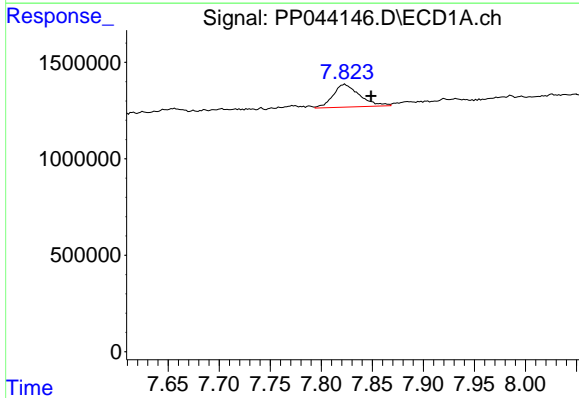
R.T.: 7.608 min
 Delta R.T.: 0.007 min
 Response: 27434
 Conc: 0.38 ng/ml

Instrument :
 ECD_P
 ClientSampleId :



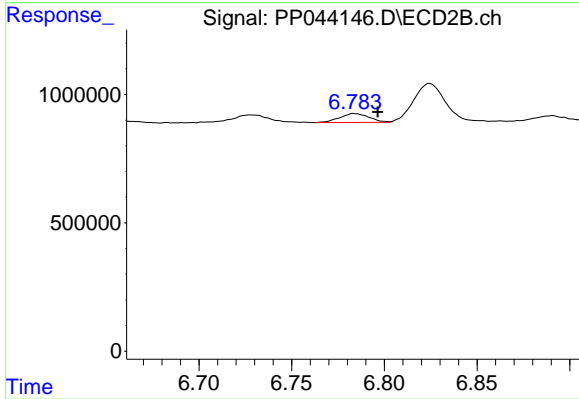
#33 AR-1260-3

R.T.: 6.269 min
 Delta R.T.: -0.014 min
 Response: 3194416
 Conc: 34.99 ng/ml



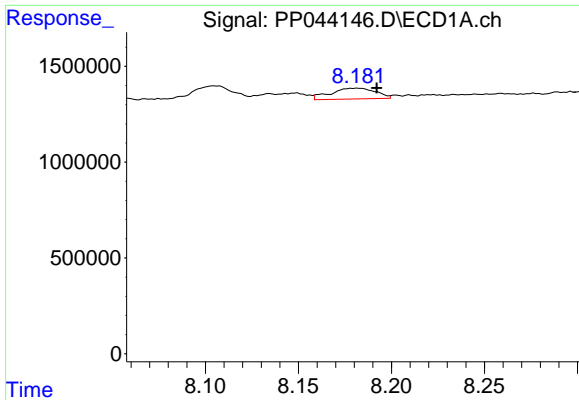
#34 AR-1260-4

R.T.: 7.823 min
 Delta R.T.: -0.026 min
 Response: 2138715
 Conc: 24.91 ng/ml



#34 AR-1260-4

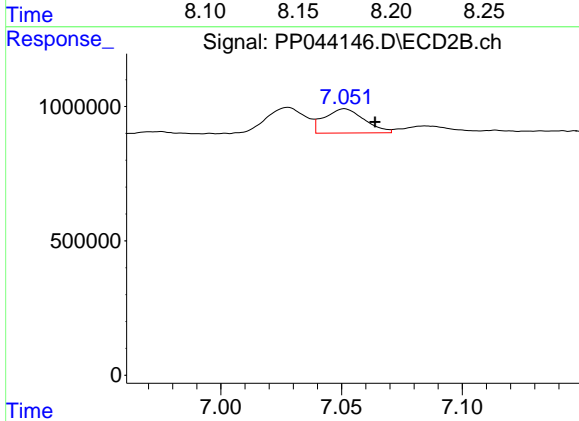
R.T.: 6.784 min
 Delta R.T.: -0.013 min
 Response: 386230
 Conc: 4.77 ng/ml



#35 AR-1260-5

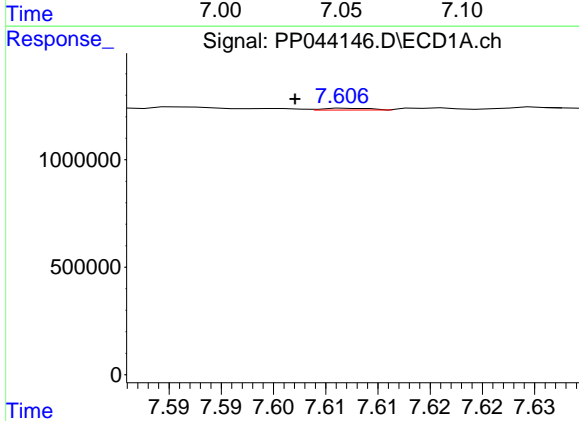
R.T.: 8.182 min
 Delta R.T.: -0.010 min
 Response: 941838
 Conc: 6.08 ng/ml

Instrument :
 ECD_P
 ClientSampleId :



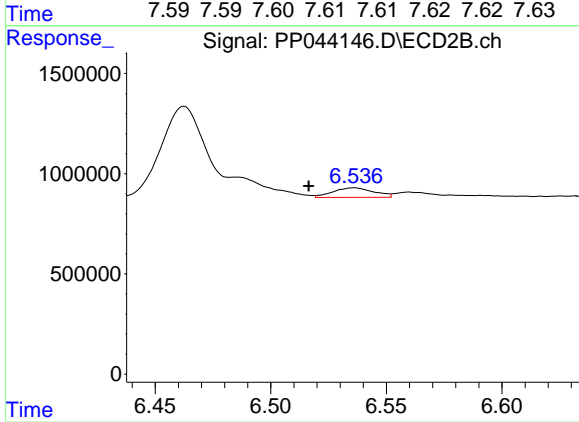
#35 AR-1260-5

R.T.: 7.051 min
 Delta R.T.: -0.013 min
 Response: 1041341
 Conc: 5.63 ng/ml



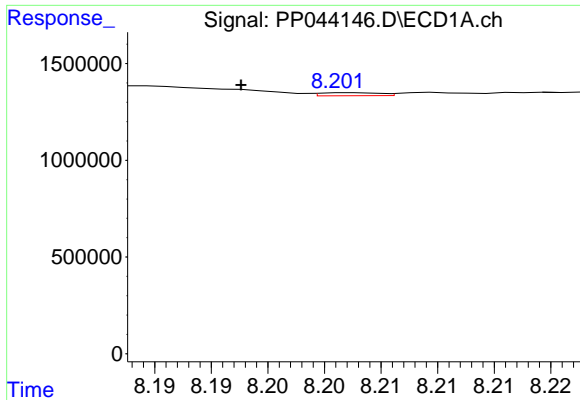
#36 AR-1262-1

R.T.: 7.608 min
 Delta R.T.: 0.006 min
 Response: 27434
 Conc: 0.28 ng/ml



#36 AR-1262-1

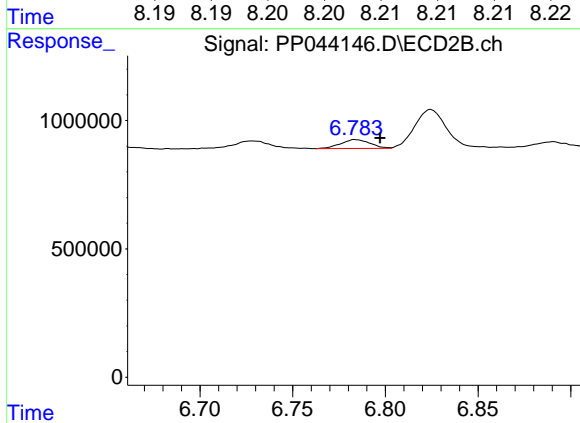
R.T.: 6.536 min
 Delta R.T.: 0.020 min
 Response: 587274
 Conc: 5.34 ng/ml



#37 AR-1262-2

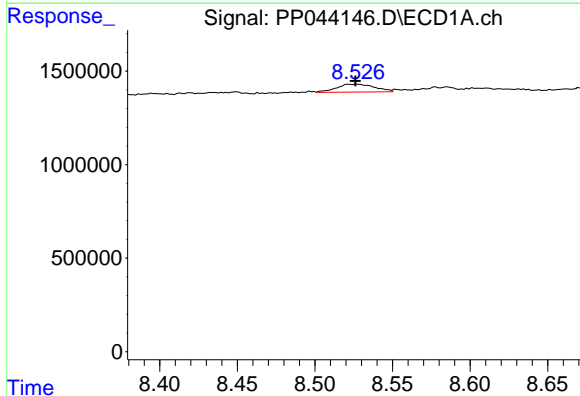
R.T.: 8.203 min
 Delta R.T.: 0.010 min
 Response: 57907
 Conc: 0.36 ng/ml

Instrument :
 ECD_P
 ClientSampleId :



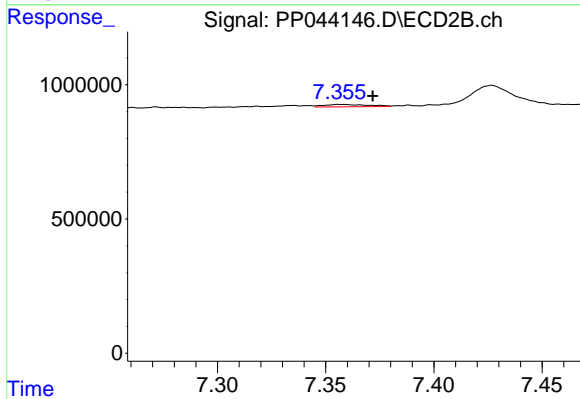
#37 AR-1262-2

R.T.: 6.784 min
 Delta R.T.: -0.013 min
 Response: 386230
 Conc: 3.79 ng/ml



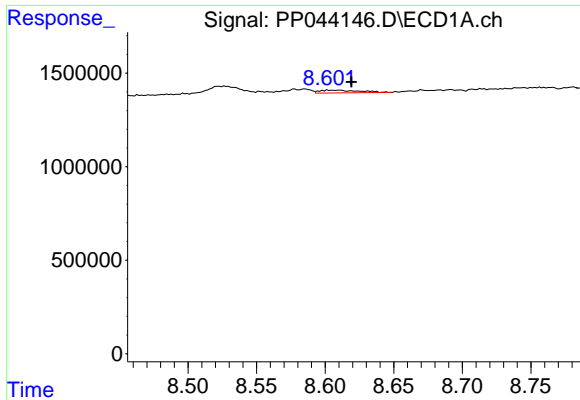
#38 AR-1262-3

R.T.: 8.527 min
 Delta R.T.: 0.001 min
 Response: 715769
 Conc: 6.54 ng/ml



#38 AR-1262-3

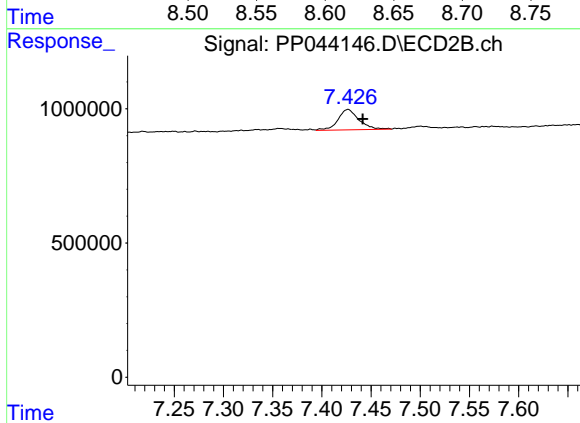
R.T.: 7.357 min
 Delta R.T.: -0.015 min
 Response: 130536
 Conc: 1.53 ng/ml



#39 AR-1262-4

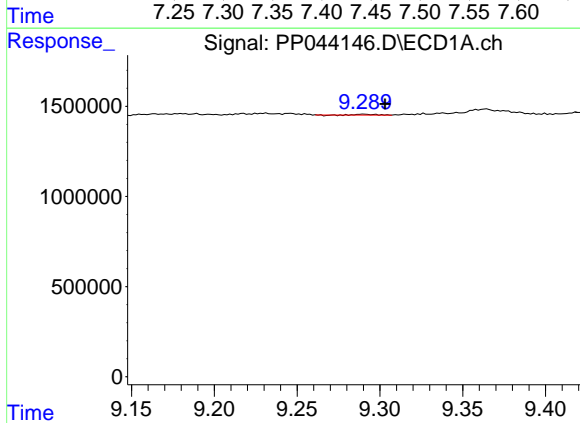
R.T.: 8.603 min
 Delta R.T.: -0.016 min
 Response: 303428
 Conc: 6.33 ng/ml

Instrument :
 ECD_P
 ClientSampleId :



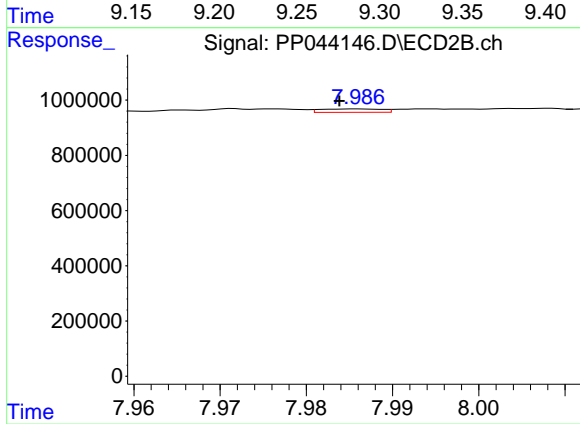
#39 AR-1262-4

R.T.: 7.427 min
 Delta R.T.: -0.015 min
 Response: 1125042
 Conc: 7.24 ng/ml



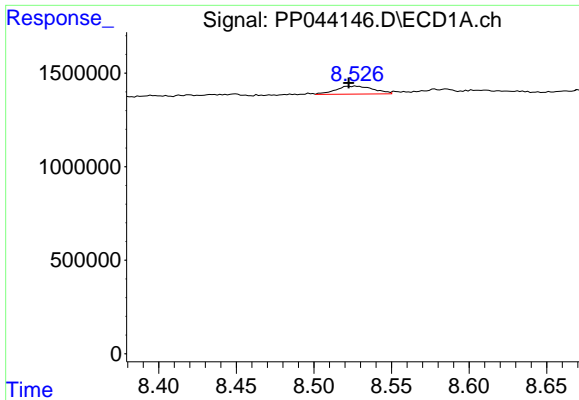
#40 AR-1262-5

R.T.: 9.290 min
 Delta R.T.: -0.013 min
 Response: 31353
 Conc: 0.56 ng/ml



#40 AR-1262-5

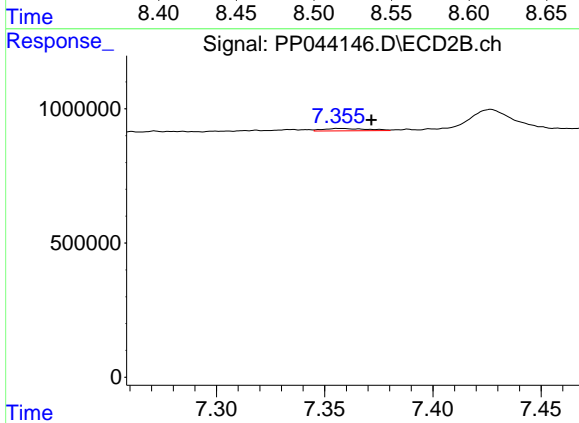
R.T.: 7.986 min
 Delta R.T.: 0.002 min
 Response: 60320
 Conc: 0.78 ng/ml



#41 AR-1268-1

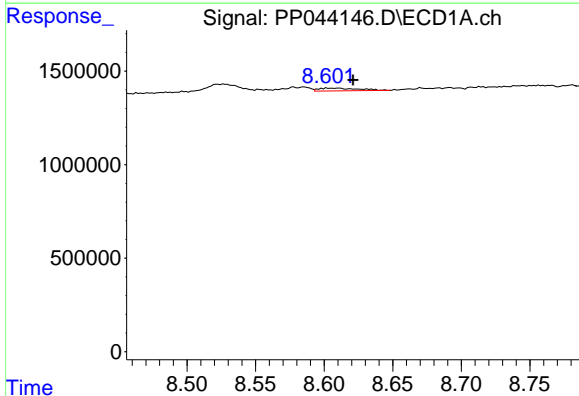
R.T.: 8.527 min
 Delta R.T.: 0.005 min
 Response: 715769
 Conc: 3.67 ng/ml

Instrument :
 ECD_P
 ClientSampleId :



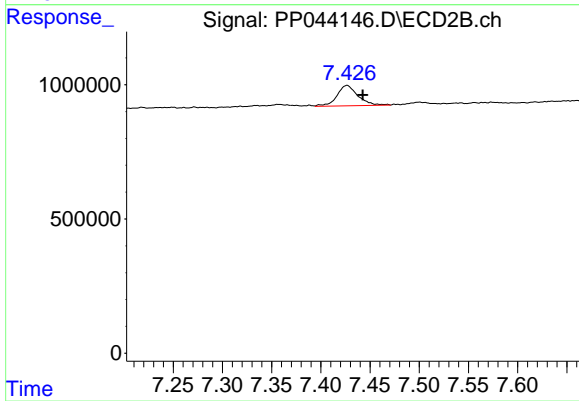
#41 AR-1268-1

R.T.: 7.357 min
 Delta R.T.: -0.015 min
 Response: 130536
 Conc: 0.52 ng/ml



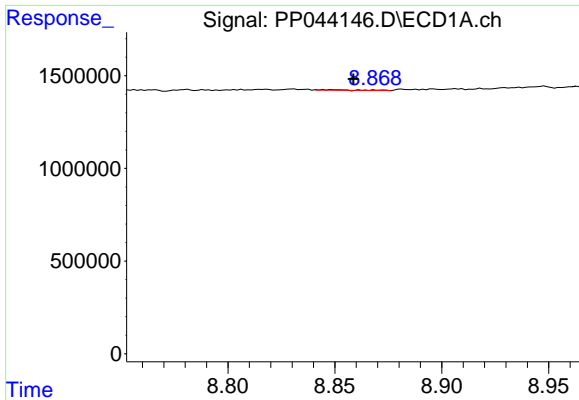
#42 AR-1268-2

R.T.: 8.603 min
 Delta R.T.: -0.019 min
 Response: 303428
 Conc: 1.73 ng/ml



#42 AR-1268-2

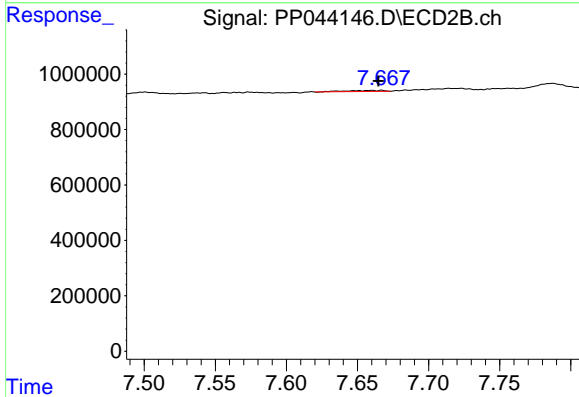
R.T.: 7.427 min
 Delta R.T.: -0.016 min
 Response: 1125042
 Conc: 4.98 ng/ml



#43 AR-1268-3

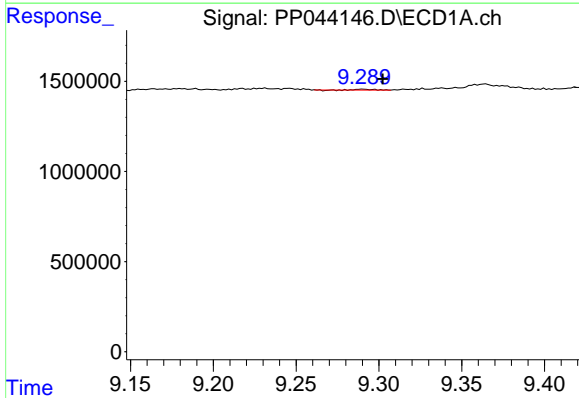
R.T.: 8.845 min
 Delta R.T.: -0.014 min
 Response: 39989
 Conc: 0.26 ng/ml

Instrument :
 ECD_P
 ClientSampleId :



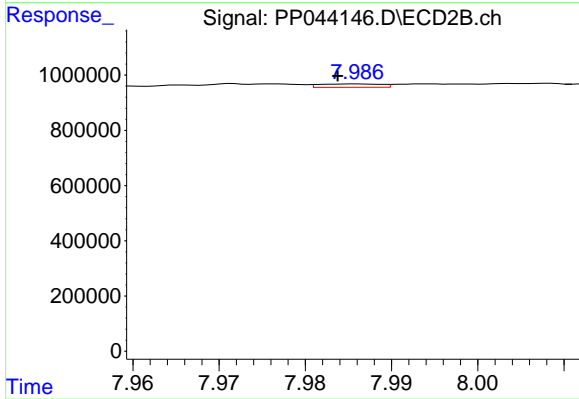
#43 AR-1268-3

R.T.: 7.667 min
 Delta R.T.: 0.003 min
 Response: 71238
 Conc: 0.37 ng/ml



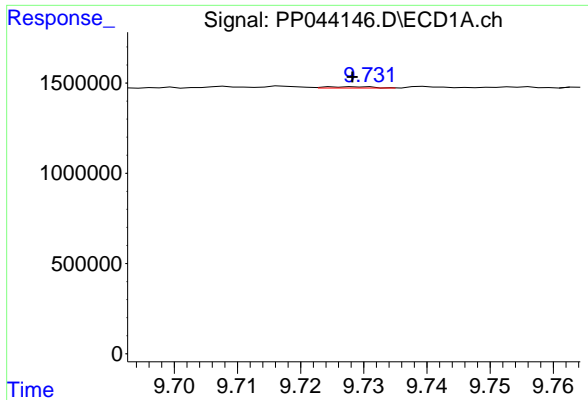
#44 AR-1268-4

R.T.: 9.290 min
 Delta R.T.: -0.012 min
 Response: 31353
 Conc: 0.50 ng/ml



#44 AR-1268-4

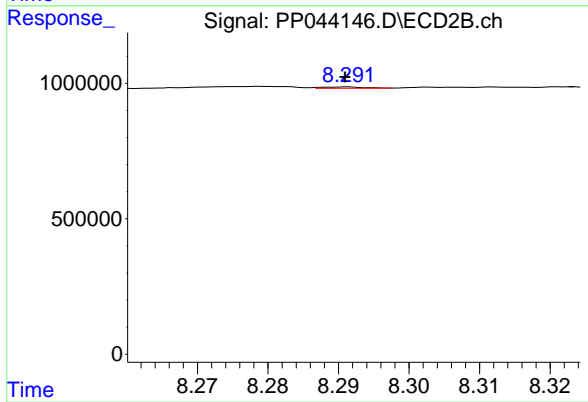
R.T.: 7.986 min
 Delta R.T.: 0.002 min
 Response: 60320
 Conc: 0.67 ng/ml



#45 AR-1268-5

R.T.: 9.730 min
Delta R.T.: 0.001 min
Response: 35430
Conc: 0.08 ng/ml

Instrument :
ECD_P
ClientSampleId :



#45 AR-1268-5

R.T.: 8.291 min
Delta R.T.: 0.000 min
Response: 20504
Conc: 0.03 ng/ml