

Data Path : Z:\pestpcbsrv\HPCHEM1\ECD_P\Data\PP030122\
 Data File : PP044156.D
 Signal(s) : Signal #1: ECD1A.ch Signal #2: ECD2B.ch
 Acq On : 02 Mar 2022 01:27
 Operator : YP\AJ
 Sample : N1715-21 10X
 Misc :
 ALS Vial : 39 Sample Multiplier: 1

Instrument :
 ECD_P
 ClientSampleId :

Integration File signal 1: autoint1.e
 Integration File signal 2: autoint2.e
 Quant Time: Mar 02 02:12:03 2022
 Quant Method : Z:\pestpcbsrv\HPCHEM1\ECD_P\methods\PP021022.M
 Quant Title : GC EXTRACTABLES
 QLast Update : Fri Feb 11 04:48:05 2022
 Response via : Initial Calibration
 Integrator: ChemStation

Volume Inj. : 2 µl
 Signal #1 Phase : ZB-MR1 Signal #2 Phase: ZB-MR2
 Signal #1 Info : 30Mx0.32mmx 0.50µ Signal #2 Info : 30M x 0.32mm x 0.25µm

Compound	RT#1	RT#2	Resp#1	Resp#2	ng/ml	ng/ml
System Monitoring Compounds						
1) SA Tetrachlo...	3.915	3.172	3204973	3684986	1.450	1.962 #
2) SA Decachlor...	10.059	8.544	2734818	2688036	2.302	1.657 #
Target Compounds						
3) L1 AR-1016-1	5.168	4.316	310205	210588	4.275	3.437
4) L1 AR-1016-2	5.192	4.335	226298	183867	2.146	2.176
5) L1 AR-1016-3	5.263	4.516	15323	119532	0.233	2.559 #
6) L1 AR-1016-4	5.365	4.569	90309	3797120	1.665	101.606 #
7) L1 AR-1016-5	5.683	4.792	1869251	1988275	35.586	43.524
8) L2 AR-1221-1	4.154	3.400	21837	44254	0.858	1.855 #
9) L2 AR-1221-2	4.239	3.484	139211	53174	7.251	2.944 #
10) L2 AR-1221-3	4.317	3.566	96254	179851	1.676	3.486 #
11) L3 AR-1232-1	4.317	3.566	96254	179851	1.983	4.180 #
12) L3 AR-1232-2	4.882	4.335	113166	183867	4.776	5.151
13) L3 AR-1232-3	5.192	4.516	226298	119532	5.256	6.113
14) L3 AR-1232-4	5.365	4.610	90309	1149212	4.137	66.458 #
15) L3 AR-1232-5	5.465	4.792	3402044	1988275	210.924	105.848 #
16) L4 AR-1242-1	5.168	4.316	310205	210588	5.520	4.320
17) L4 AR-1242-2	5.192	4.335	226298	183867	2.735	2.731
18) L4 AR-1242-3	5.263	4.516	15323	119532	0.296	3.184 #
19) L4 AR-1242-4	5.365	4.610	90309	1149212	2.114	31.826 #
20) L4 AR-1242-5	6.168	5.170	1573764	7382698	36.445	171.499 #
21) L5 AR-1248-1	5.168	4.316	310205	210588	7.566	5.653 #
22) L5 AR-1248-2	5.465	4.569	3402044	3797120	59.882	77.617 #
23) L5 AR-1248-3	5.683	4.610	1869251	1149212	28.018	22.395
24) L5 AR-1248-4	6.123	4.792	2197168	1988275	31.448	33.915
25) L5 AR-1248-5	6.168	5.213	1573764	809025	22.765	14.120 #
26) L6 AR-1254-1	6.094	5.170	5529379	7382698	73.182	84.535
27) L6 AR-1254-2	6.333	5.331	7395621	6321102	65.933	82.870 #
28) L6 AR-1254-3	6.733	5.762	5942188	7836260	51.353	63.939
29) L6 AR-1254-4	7.047	6.012	3899777	4524377	48.849	57.325
30) L6 AR-1254-5	7.508	6.464	4529950	6325977	52.819	54.702
31) L7 AR-1260-1	6.913	5.903	2575710	4376692	30.758	54.729 #
32) L7 AR-1260-2	7.197	6.110	2189845	3635700	24.192	37.231 #
33) L7 AR-1260-3	7.593	6.270	293114	3209224	4.044	35.154 #
34) L7 AR-1260-4	7.867f	6.785	91022	464281	1.060	5.738 #
35) L7 AR-1260-5	8.182	7.053	1321070	937988	8.523	5.074 #
36) L8 AR-1262-1	7.593	6.537f	293114	470401	2.969	4.279 #
37) L8 AR-1262-2	8.182	6.785	1321070	464281	8.183	4.552 #
38) L8 AR-1262-3	8.529	7.361	590518	267715	5.398	3.141 #
39) L8 AR-1262-4	8.610	7.428	117765	911267	2.456	5.867 #
40) L8 AR-1262-5	9.315	7.976	28924	235434	0.519	3.026 #
41) L9 AR-1268-1	8.529	7.361	590518	267715	3.029	1.057 #

Data Path : Z:\pestpcbsrv\HPCHEM1\ECD_P\Data\PP030122\
 Data File : PP044156.D
 Signal(s) : Signal #1: ECD1A.ch Signal #2: ECD2B.ch
 Acq On : 02 Mar 2022 01:27
 Operator : YP\AJ
 Sample : N1715-21 10X
 Misc :
 ALS Vial : 39 Sample Multiplier: 1

Instrument :
 ECD_P
 ClientSampleId :

Integration File signal 1: autoint1.e
 Integration File signal 2: autoint2.e
 Quant Time: Mar 02 02:12:03 2022
 Quant Method : Z:\pestpcbsrv\HPCHEM1\ECD_P\methods\PP021022.M
 Quant Title : GC EXTRACTABLES
 QLast Update : Fri Feb 11 04:48:05 2022
 Response via : Initial Calibration
 Integrator: ChemStation

Volume Inj. : 2 µl
 Signal #1 Phase : ZB-MR1 Signal #2 Phase: ZB-MR2
 Signal #1 Info : 30Mx0.32mmx 0.50µ Signal #2 Info : 30M x 0.32mm x 0.25µm

	Compound	RT#1	RT#2	Resp#1	Resp#2	ng/ml	ng/ml
42)	L9 AR-1268-2	8.610	7.428	117765	911267	0.673	4.033 #
43)	L9 AR-1268-3	8.862	7.662	22868	43020	0.148	0.221 #
44)	L9 AR-1268-4	9.315	7.976	28924	235434	0.462	2.618 #
45)	L9 AR-1268-5	9.738	8.280	54216	137048	0.119	0.228 #

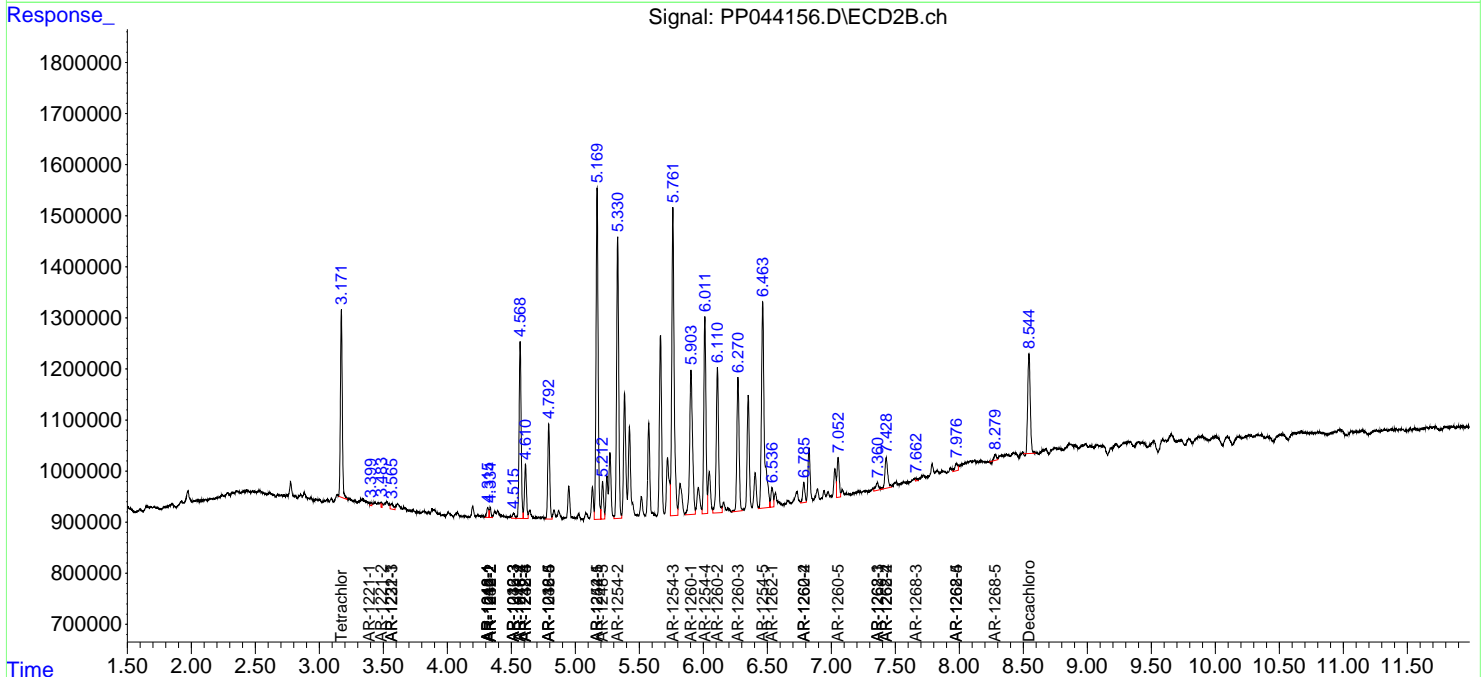
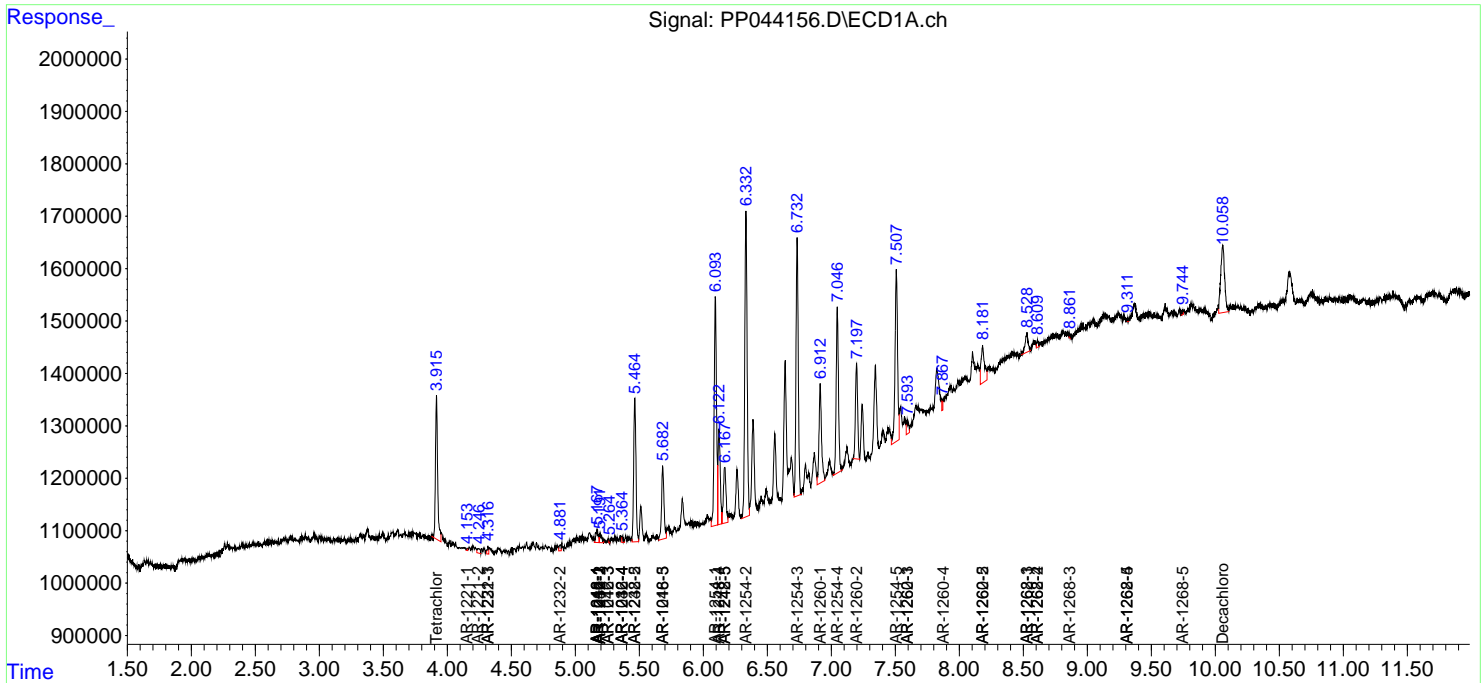
(f)=RT Delta > 1/2 Window (#)=Amounts differ by > 25% (m)=manual int.

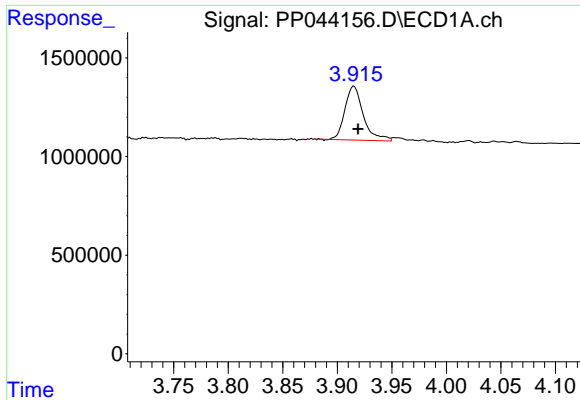
Data Path : Z:\pestpcbsrv\HPCHEM1\ECD_P\Data\PP030122\
 Data File : PP044156.D
 Signal(s) : Signal #1: ECD1A.ch Signal #2: ECD2B.ch
 Acq On : 02 Mar 2022 01:27
 Operator : YP\AJ
 Sample : N1715-21 10X
 Misc :
 ALS Vial : 39 Sample Multiplier: 1

Instrument :
 ECD_P
 ClientSampleId :

Integration File signal 1: autoint1.e
 Integration File signal 2: autoint2.e
 Quant Time: Mar 02 02:12:03 2022
 Quant Method : Z:\pestpcbsrv\HPCHEM1\ECD_P\methods\PP021022.M
 Quant Title : GC EXTRACTABLES
 QLast Update : Fri Feb 11 04:48:05 2022
 Response via : Initial Calibration
 Integrator: ChemStation

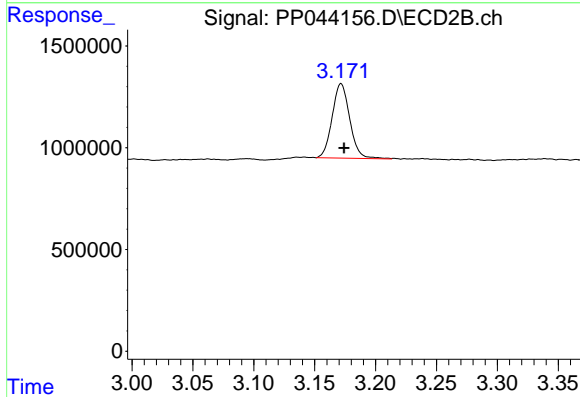
Volume Inj. : 2 µl
 Signal #1 Phase : ZB-MR1 Signal #2 Phase: ZB-MR2
 Signal #1 Info : 30Mx0.32mmx 0.50µ Signal #2 Info : 30M x 0.32mm x 0.25µm



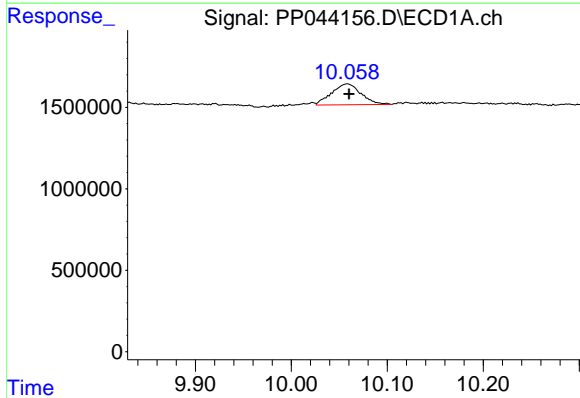


#1 Tetrachloro-m-xylene
 R.T.: 3.915 min
 Delta R.T.: -0.004 min
 Response: 3204973
 Conc: 1.45 ng/ml

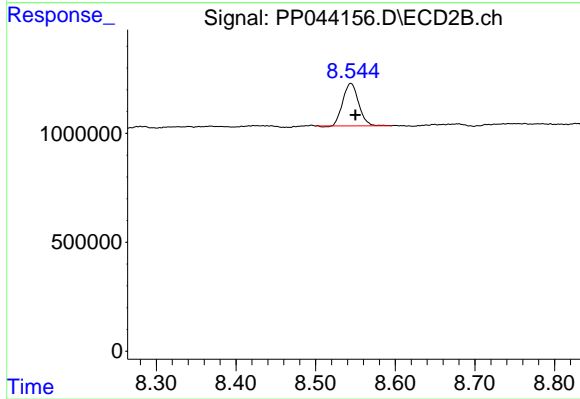
Instrument :
 ECD_P
 ClientSampleId :



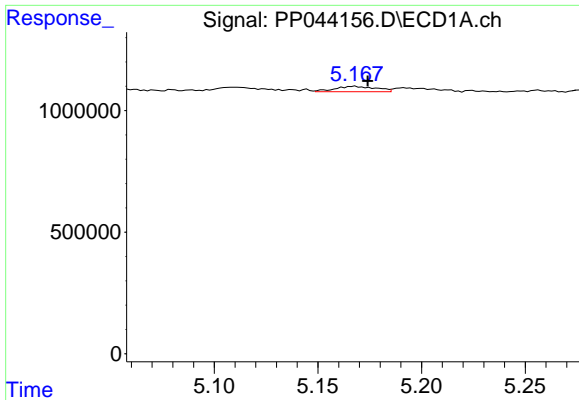
#1 Tetrachloro-m-xylene
 R.T.: 3.172 min
 Delta R.T.: -0.003 min
 Response: 3684986
 Conc: 1.96 ng/ml



#2 Decachlorobiphenyl
 R.T.: 10.059 min
 Delta R.T.: -0.001 min
 Response: 2734818
 Conc: 2.30 ng/ml



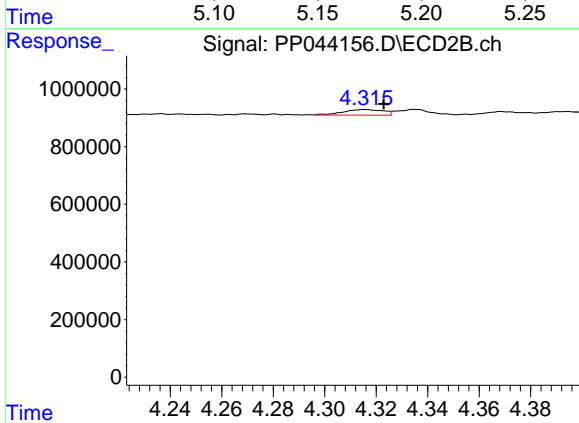
#2 Decachlorobiphenyl
 R.T.: 8.544 min
 Delta R.T.: -0.006 min
 Response: 2688036
 Conc: 1.66 ng/ml



#3 AR-1016-1

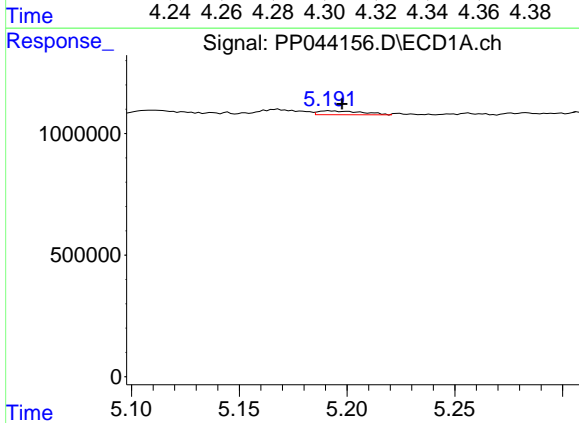
R.T.: 5.168 min
 Delta R.T.: -0.006 min
 Response: 310205
 Conc: 4.28 ng/ml

Instrument :
 ECD_P
 ClientSampleId :



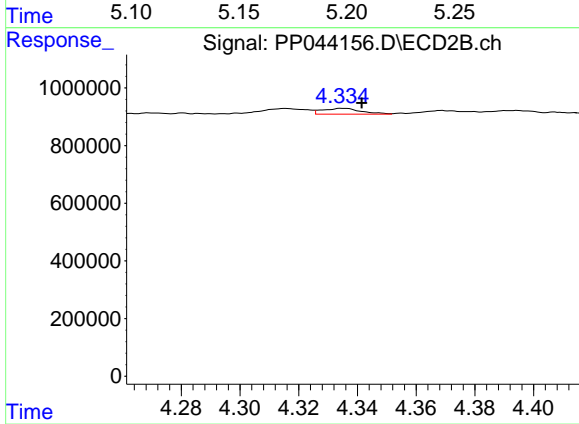
#3 AR-1016-1

R.T.: 4.316 min
 Delta R.T.: -0.007 min
 Response: 210588
 Conc: 3.44 ng/ml



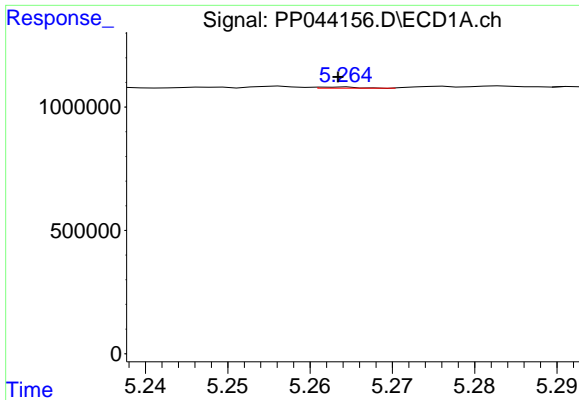
#4 AR-1016-2

R.T.: 5.192 min
 Delta R.T.: -0.006 min
 Response: 226298
 Conc: 2.15 ng/ml



#4 AR-1016-2

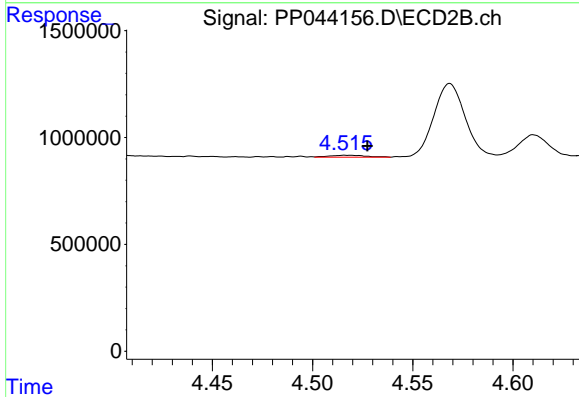
R.T.: 4.335 min
 Delta R.T.: -0.007 min
 Response: 183867
 Conc: 2.18 ng/ml



#5 AR-1016-3

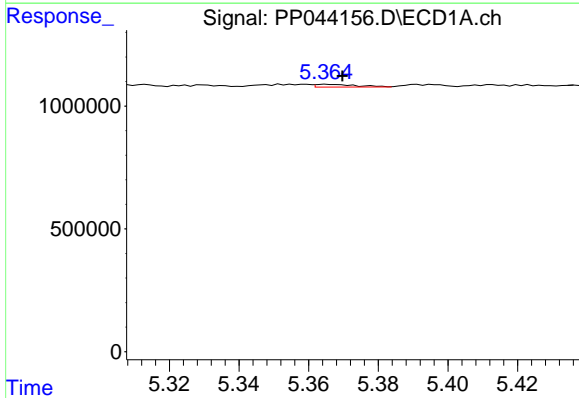
R.T.: 5.263 min
 Delta R.T.: 0.000 min
 Response: 15323
 Conc: 0.23 ng/ml

Instrument :
 ECD_P
 ClientSampleId :



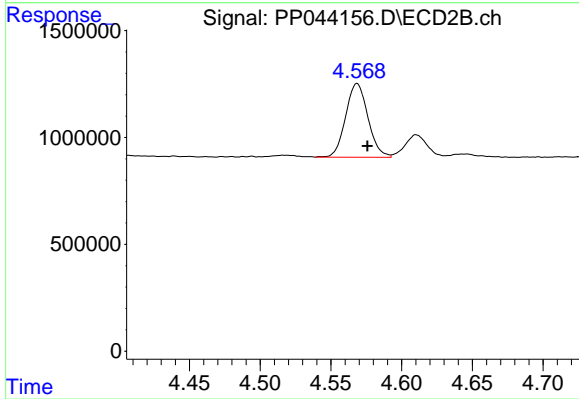
#5 AR-1016-3

R.T.: 4.516 min
 Delta R.T.: -0.012 min
 Response: 119532
 Conc: 2.56 ng/ml



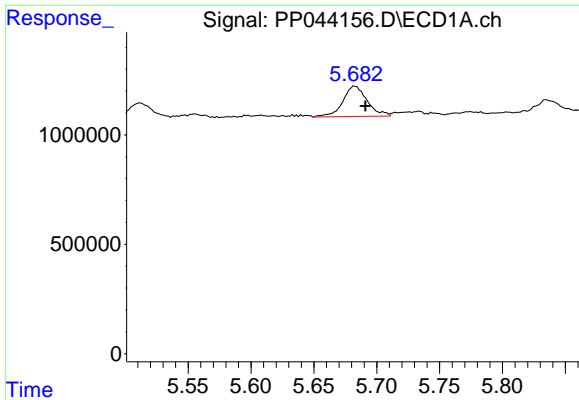
#6 AR-1016-4

R.T.: 5.365 min
 Delta R.T.: -0.005 min
 Response: 90309
 Conc: 1.67 ng/ml



#6 AR-1016-4

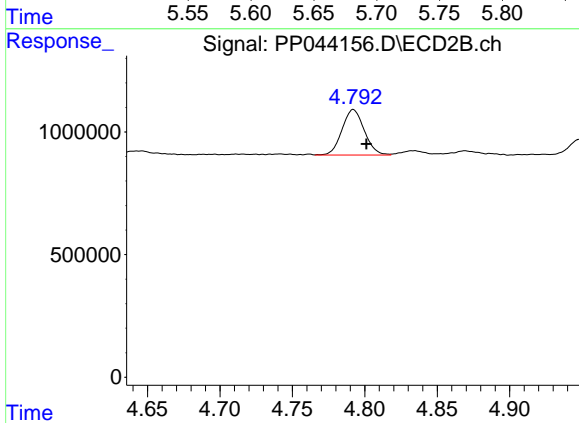
R.T.: 4.569 min
 Delta R.T.: -0.007 min
 Response: 3797120
 Conc: 101.61 ng/ml



#7 AR-1016-5

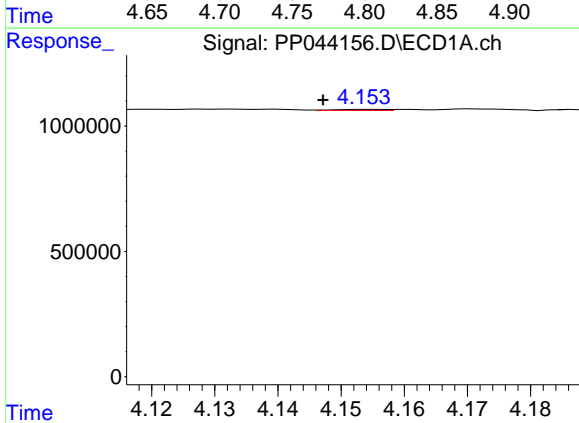
R.T.: 5.683 min
 Delta R.T.: -0.008 min
 Response: 1869251
 Conc: 35.59 ng/ml

Instrument :
 ECD_P
 ClientSampleId :



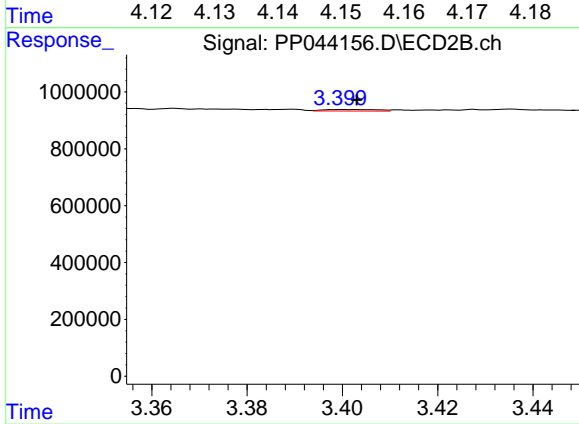
#7 AR-1016-5

R.T.: 4.792 min
 Delta R.T.: -0.009 min
 Response: 1988275
 Conc: 43.52 ng/ml



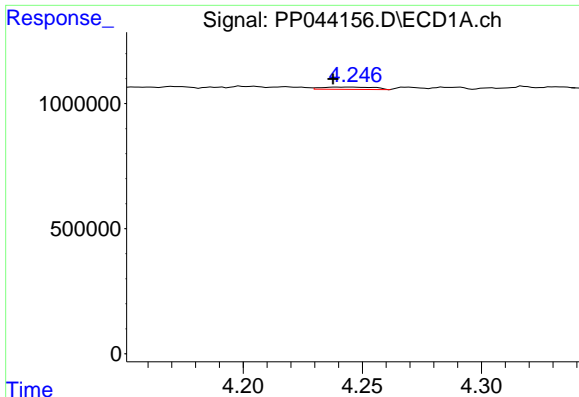
#8 AR-1221-1

R.T.: 4.154 min
 Delta R.T.: 0.007 min
 Response: 21837
 Conc: 0.86 ng/ml



#8 AR-1221-1

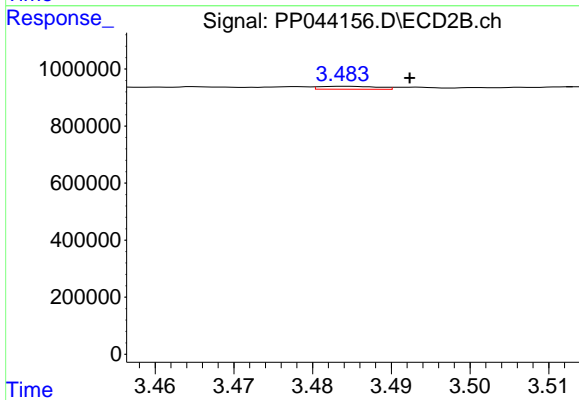
R.T.: 3.400 min
 Delta R.T.: -0.003 min
 Response: 44254
 Conc: 1.86 ng/ml



#9 AR-1221-2

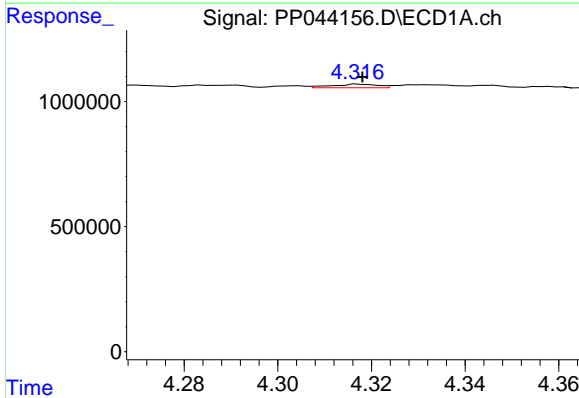
R.T.: 4.239 min
 Delta R.T.: 0.002 min
 Response: 139211
 Conc: 7.25 ng/ml

Instrument :
 ECD_P
 ClientSampleId :



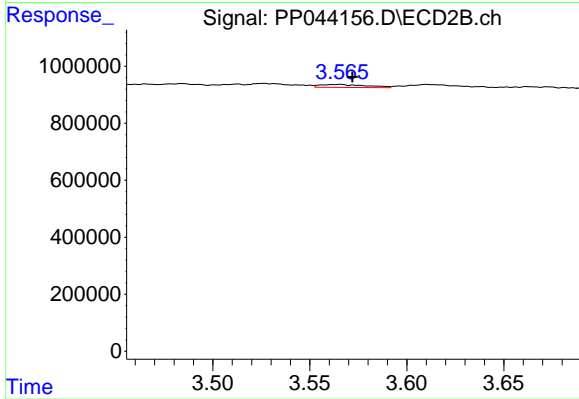
#9 AR-1221-2

R.T.: 3.484 min
 Delta R.T.: -0.008 min
 Response: 53174
 Conc: 2.94 ng/ml



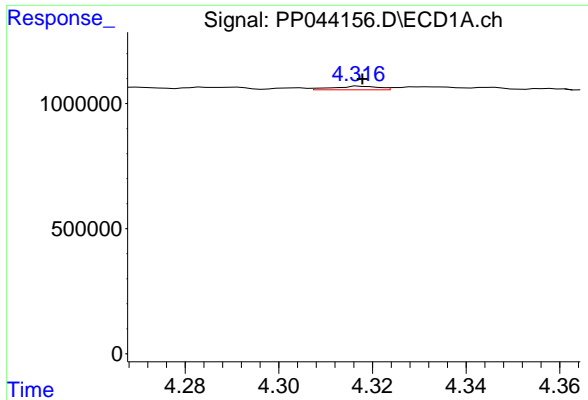
#10 AR-1221-3

R.T.: 4.317 min
 Delta R.T.: 0.000 min
 Response: 96254
 Conc: 1.68 ng/ml



#10 AR-1221-3

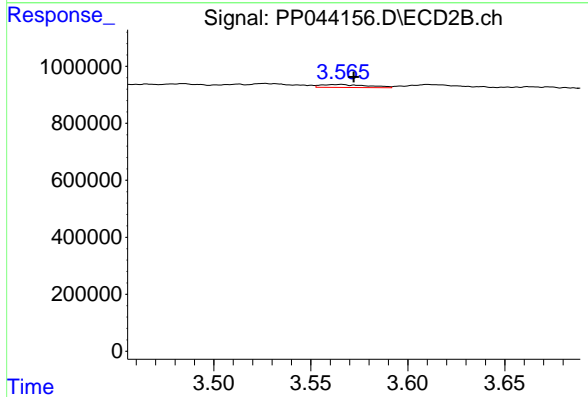
R.T.: 3.566 min
 Delta R.T.: -0.006 min
 Response: 179851
 Conc: 3.49 ng/ml



#11 AR-1232-1

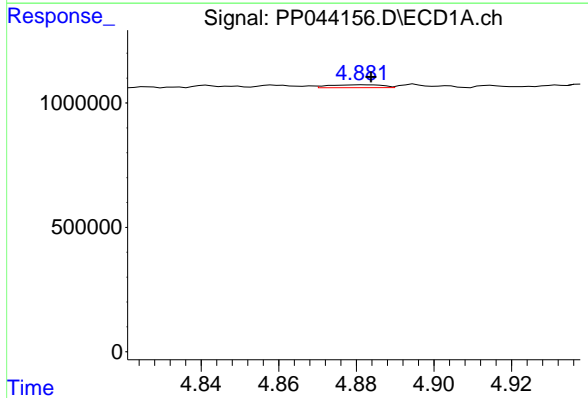
R.T.: 4.317 min
 Delta R.T.: 0.000 min
 Response: 96254
 Conc: 1.98 ng/ml

Instrument :
 ECD_P
 ClientSampleId :



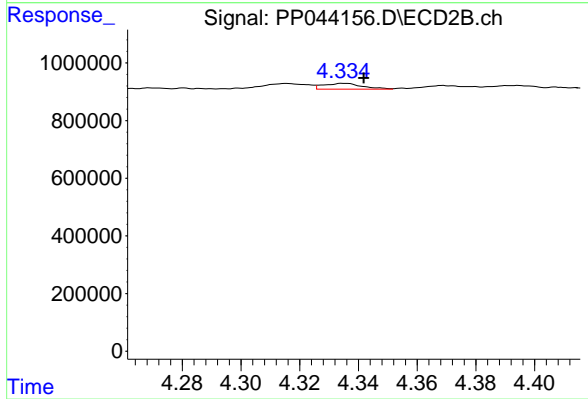
#11 AR-1232-1

R.T.: 3.566 min
 Delta R.T.: -0.006 min
 Response: 179851
 Conc: 4.18 ng/ml



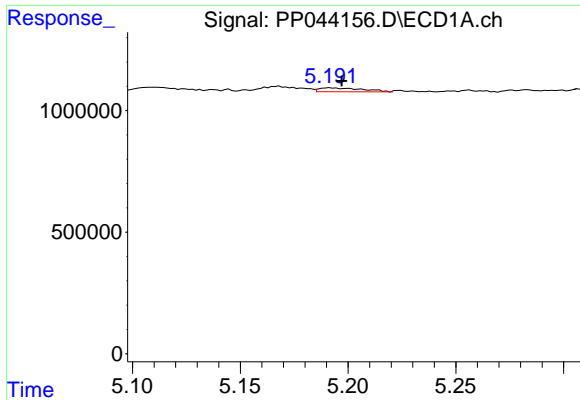
#12 AR-1232-2

R.T.: 4.882 min
 Delta R.T.: -0.002 min
 Response: 113166
 Conc: 4.78 ng/ml



#12 AR-1232-2

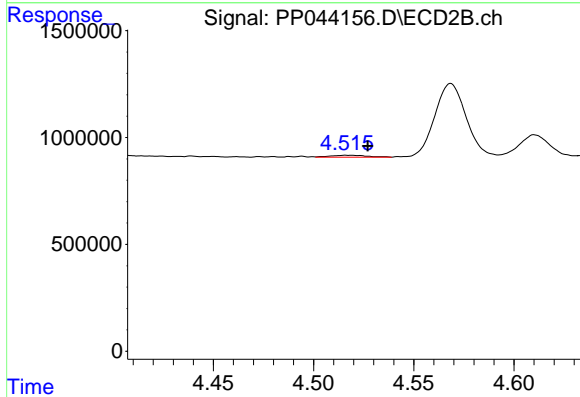
R.T.: 4.335 min
 Delta R.T.: -0.007 min
 Response: 183867
 Conc: 5.15 ng/ml



#13 AR-1232-3

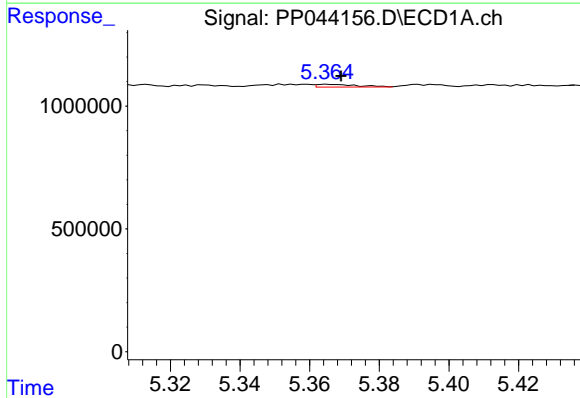
R.T.: 5.192 min
 Delta R.T.: -0.006 min
 Response: 226298
 Conc: 5.26 ng/ml

Instrument :
 ECD_P
 ClientSampleId :



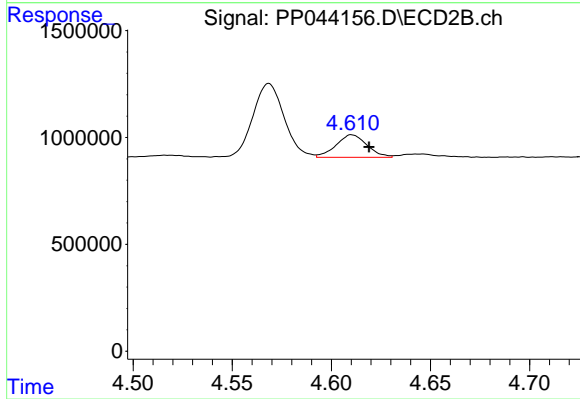
#13 AR-1232-3

R.T.: 4.516 min
 Delta R.T.: -0.011 min
 Response: 119532
 Conc: 6.11 ng/ml



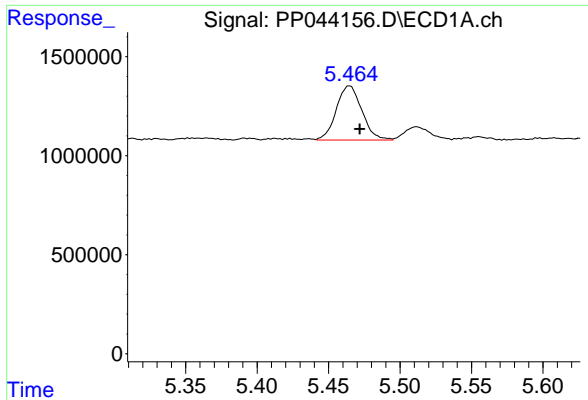
#14 AR-1232-4

R.T.: 5.365 min
 Delta R.T.: -0.004 min
 Response: 90309
 Conc: 4.14 ng/ml



#14 AR-1232-4

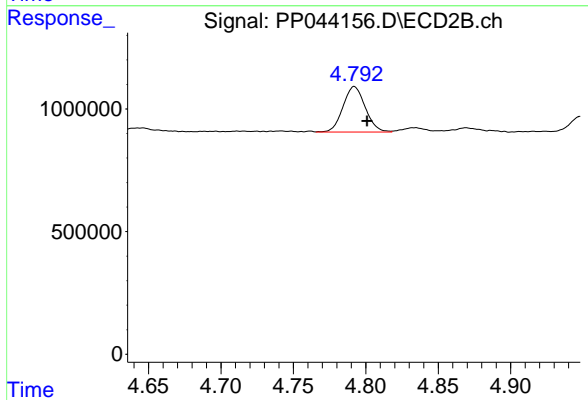
R.T.: 4.610 min
 Delta R.T.: -0.009 min
 Response: 1149212
 Conc: 66.46 ng/ml



#15 AR-1232-5

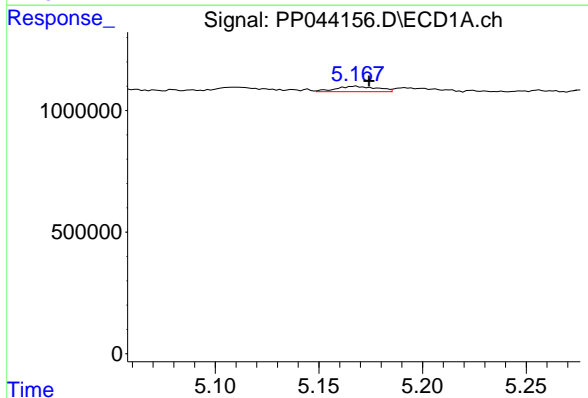
R.T.: 5.465 min
 Delta R.T.: -0.007 min
 Response: 3402044
 Conc: 210.92 ng/ml

Instrument :
 ECD_P
 ClientSampleId :



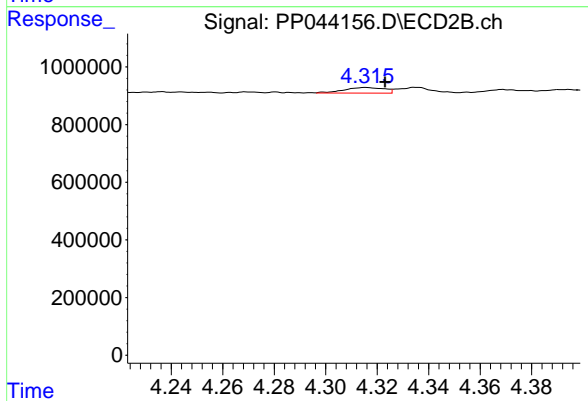
#15 AR-1232-5

R.T.: 4.792 min
 Delta R.T.: -0.009 min
 Response: 1988275
 Conc: 105.85 ng/ml



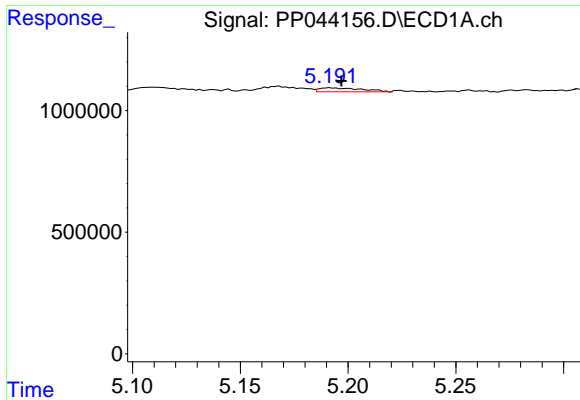
#16 AR-1242-1

R.T.: 5.168 min
 Delta R.T.: -0.007 min
 Response: 310205
 Conc: 5.52 ng/ml



#16 AR-1242-1

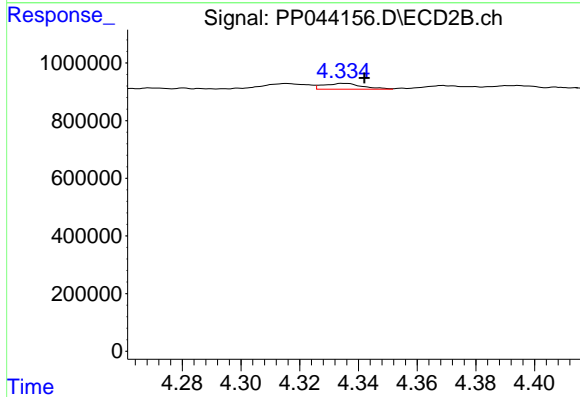
R.T.: 4.316 min
 Delta R.T.: -0.007 min
 Response: 210588
 Conc: 4.32 ng/ml



#17 AR-1242-2

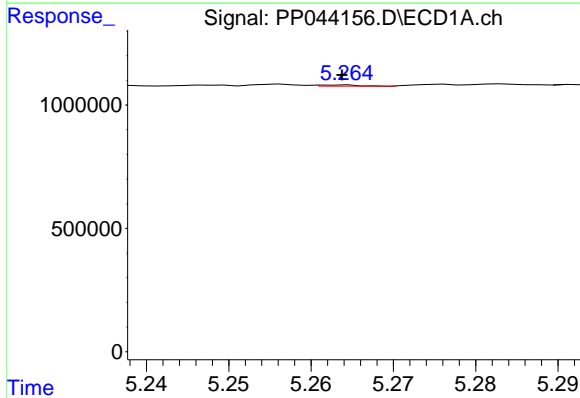
R.T.: 5.192 min
 Delta R.T.: -0.005 min
 Response: 226298
 Conc: 2.74 ng/ml

Instrument :
 ECD_P
 ClientSampleId :



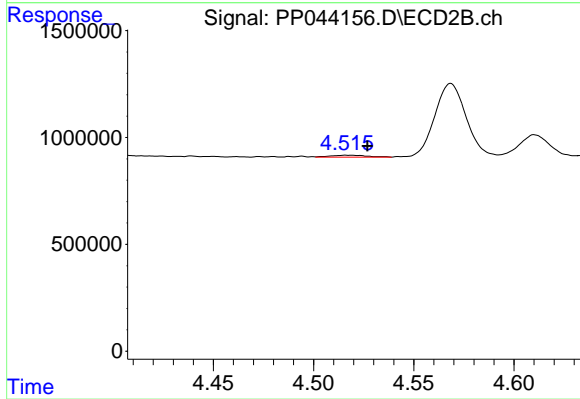
#17 AR-1242-2

R.T.: 4.335 min
 Delta R.T.: -0.007 min
 Response: 183867
 Conc: 2.73 ng/ml



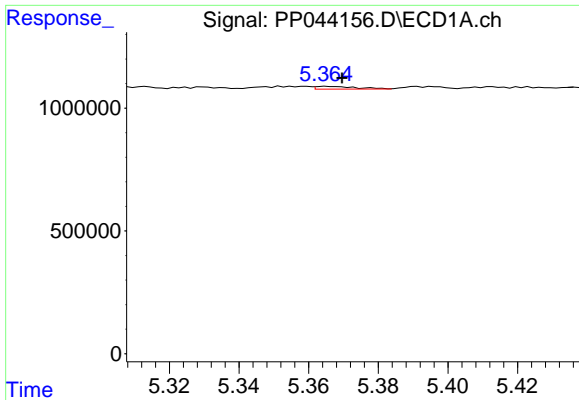
#18 AR-1242-3

R.T.: 5.263 min
 Delta R.T.: 0.000 min
 Response: 15323
 Conc: 0.30 ng/ml



#18 AR-1242-3

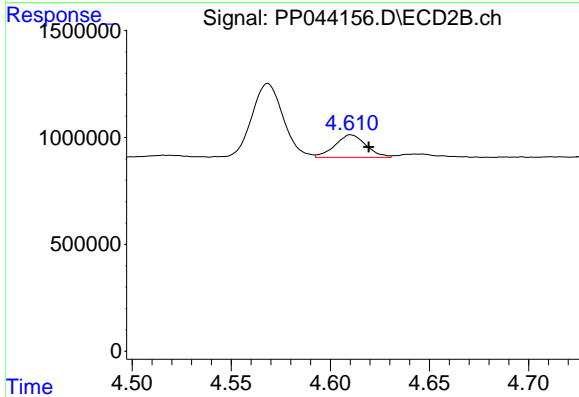
R.T.: 4.516 min
 Delta R.T.: -0.011 min
 Response: 119532
 Conc: 3.18 ng/ml



#19 AR-1242-4

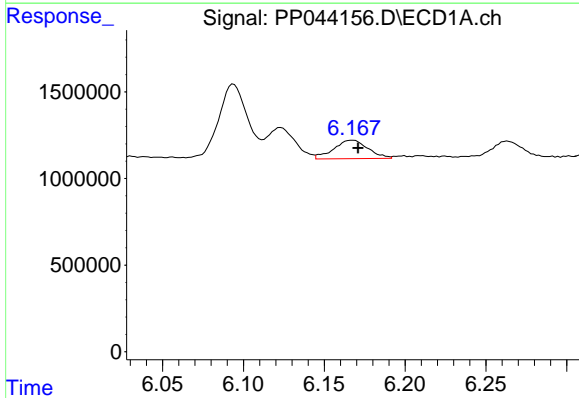
R.T.: 5.365 min
 Delta R.T.: -0.005 min
 Response: 90309
 Conc: 2.11 ng/ml

Instrument :
 ECD_P
 ClientSampleId :



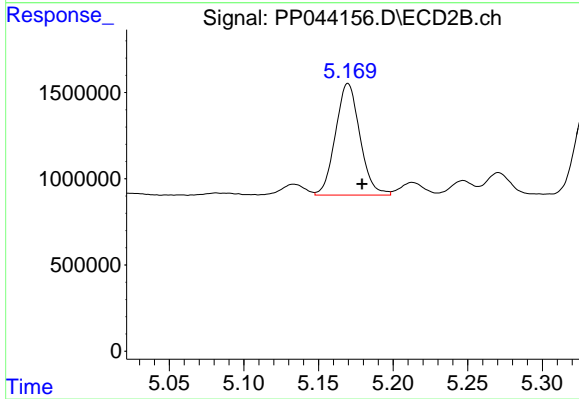
#19 AR-1242-4

R.T.: 4.610 min
 Delta R.T.: -0.009 min
 Response: 1149212
 Conc: 31.83 ng/ml



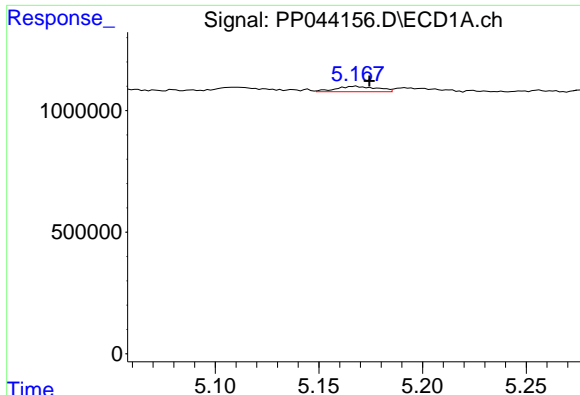
#20 AR-1242-5

R.T.: 6.168 min
 Delta R.T.: -0.003 min
 Response: 1573764
 Conc: 36.44 ng/ml



#20 AR-1242-5

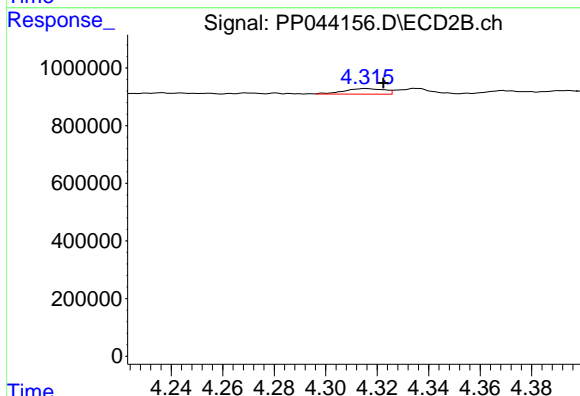
R.T.: 5.170 min
 Delta R.T.: -0.009 min
 Response: 7382698
 Conc: 171.50 ng/ml



#21 AR-1248-1

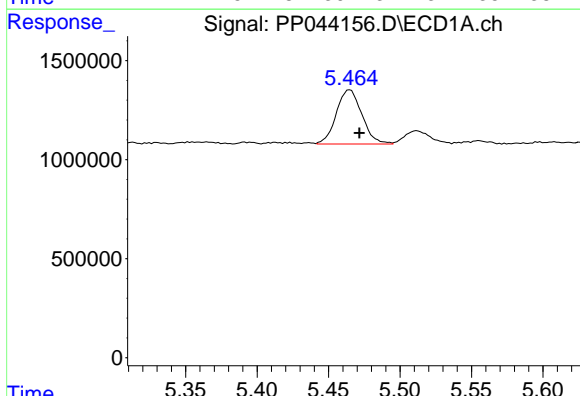
R.T.: 5.168 min
 Delta R.T.: -0.007 min
 Response: 310205
 Conc: 7.57 ng/ml

Instrument :
 ECD_P
 ClientSampleId :



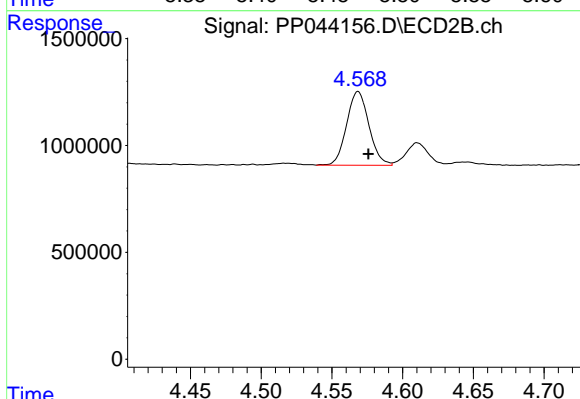
#21 AR-1248-1

R.T.: 4.316 min
 Delta R.T.: -0.007 min
 Response: 210588
 Conc: 5.65 ng/ml



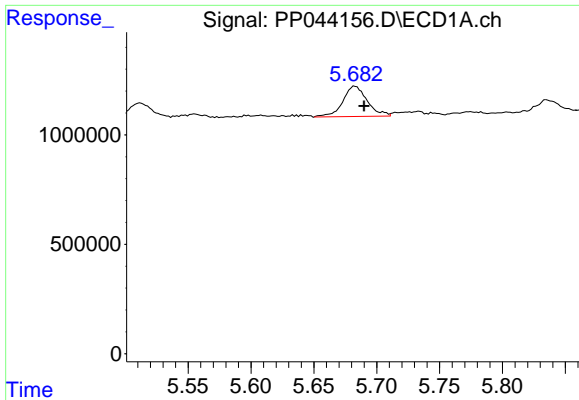
#22 AR-1248-2

R.T.: 5.465 min
 Delta R.T.: -0.007 min
 Response: 3402044
 Conc: 59.88 ng/ml



#22 AR-1248-2

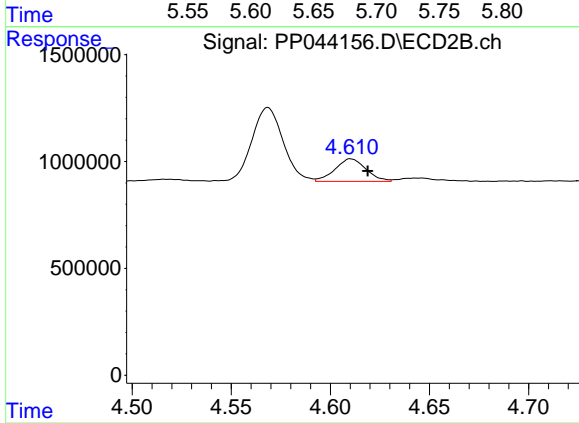
R.T.: 4.569 min
 Delta R.T.: -0.007 min
 Response: 3797120
 Conc: 77.62 ng/ml



#23 AR-1248-3

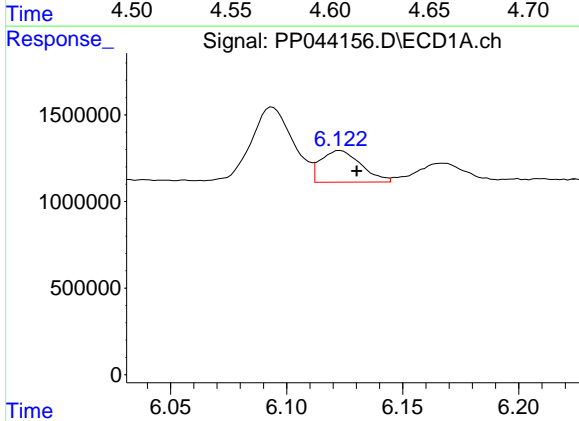
R.T.: 5.683 min
 Delta R.T.: -0.007 min
 Response: 1869251
 Conc: 28.02 ng/ml

Instrument :
 ECD_P
 ClientSampleId :



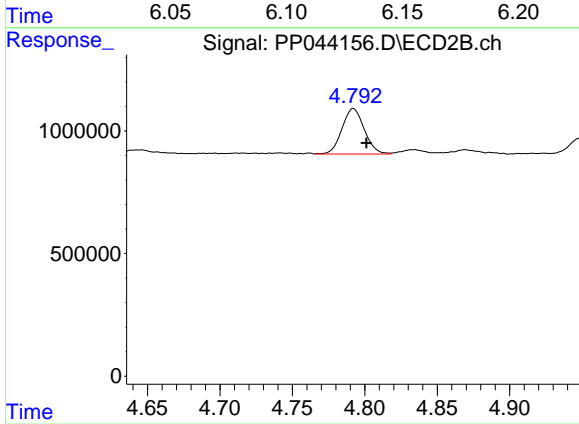
#23 AR-1248-3

R.T.: 4.610 min
 Delta R.T.: -0.009 min
 Response: 1149212
 Conc: 22.40 ng/ml



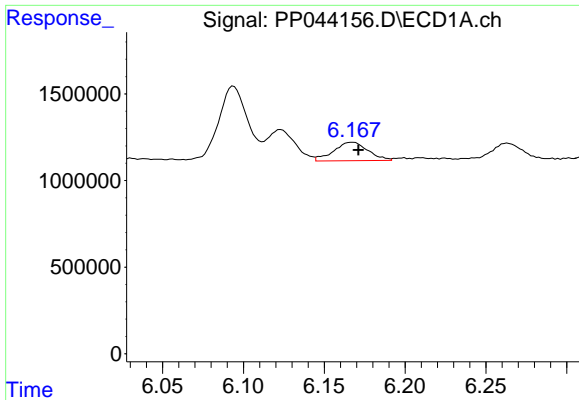
#24 AR-1248-4

R.T.: 6.123 min
 Delta R.T.: -0.007 min
 Response: 2197168
 Conc: 31.45 ng/ml



#24 AR-1248-4

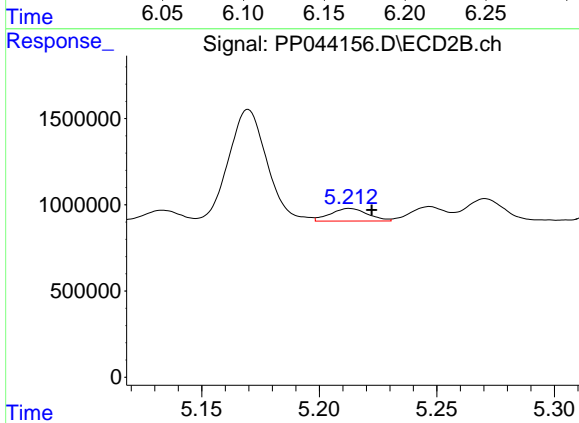
R.T.: 4.792 min
 Delta R.T.: -0.009 min
 Response: 1988275
 Conc: 33.91 ng/ml



#25 AR-1248-5

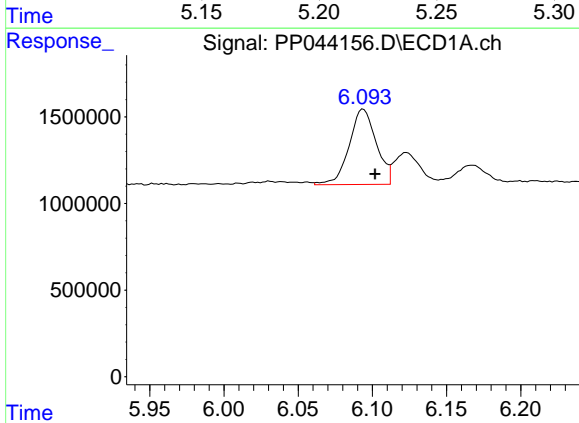
R.T.: 6.168 min
 Delta R.T.: -0.004 min
 Response: 1573764
 Conc: 22.76 ng/ml

Instrument :
 ECD_P
 ClientSampleId :



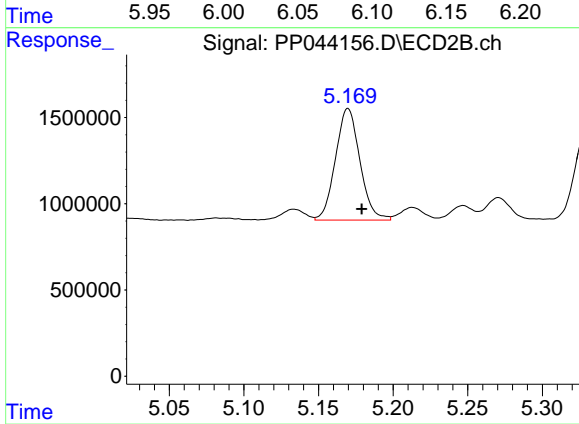
#25 AR-1248-5

R.T.: 5.213 min
 Delta R.T.: -0.009 min
 Response: 809025
 Conc: 14.12 ng/ml



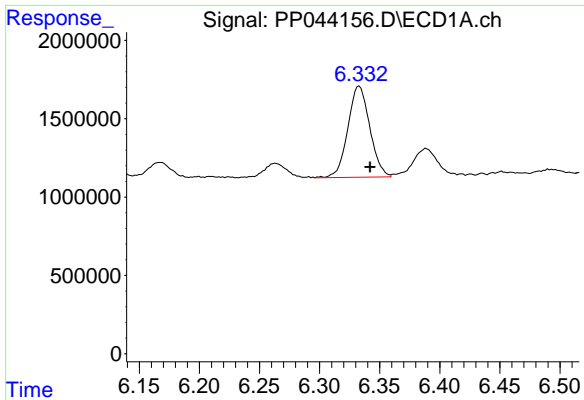
#26 AR-1254-1

R.T.: 6.094 min
 Delta R.T.: -0.008 min
 Response: 5529379
 Conc: 73.18 ng/ml



#26 AR-1254-1

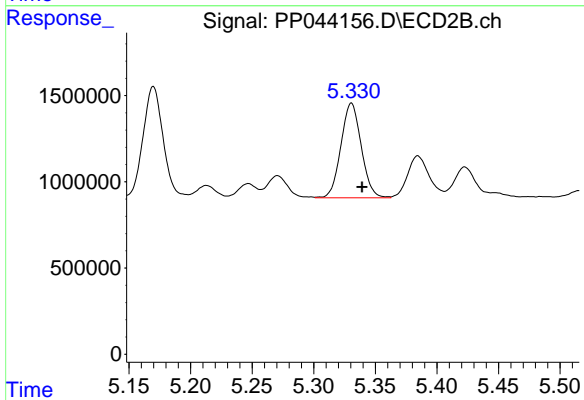
R.T.: 5.170 min
 Delta R.T.: -0.009 min
 Response: 7382698
 Conc: 84.54 ng/ml



#27 AR-1254-2

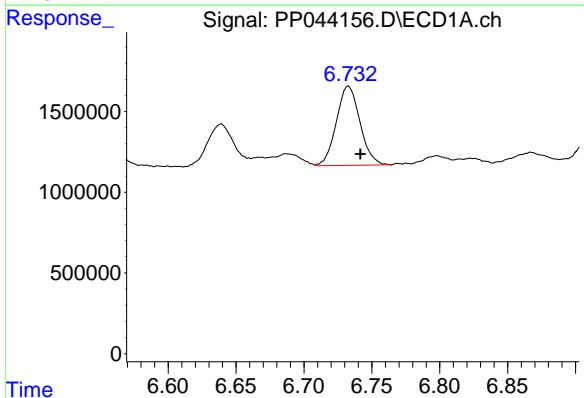
R.T.: 6.333 min
 Delta R.T.: -0.009 min
 Response: 7395621
 Conc: 65.93 ng/ml

Instrument :
 ECD_P
 ClientSampleId :



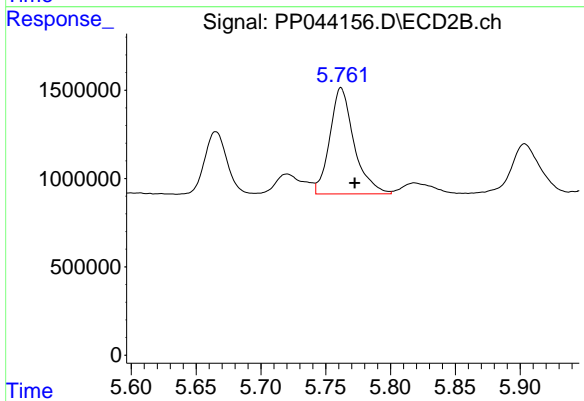
#27 AR-1254-2

R.T.: 5.331 min
 Delta R.T.: -0.009 min
 Response: 6321102
 Conc: 82.87 ng/ml



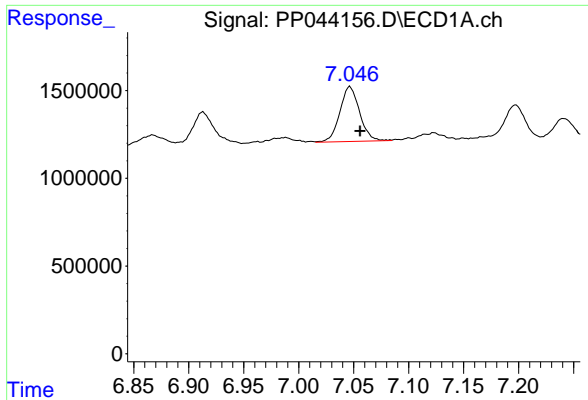
#28 AR-1254-3

R.T.: 6.733 min
 Delta R.T.: -0.009 min
 Response: 5942188
 Conc: 51.35 ng/ml



#28 AR-1254-3

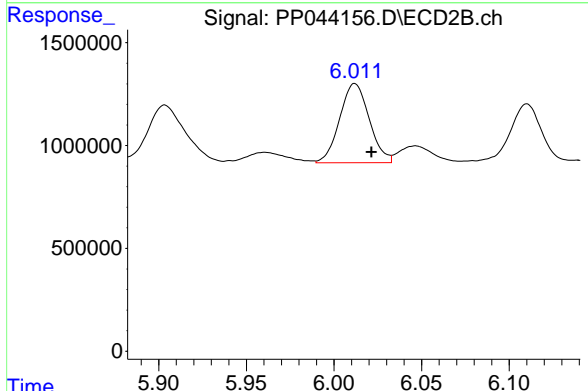
R.T.: 5.762 min
 Delta R.T.: -0.011 min
 Response: 7836260
 Conc: 63.94 ng/ml



#29 AR-1254-4

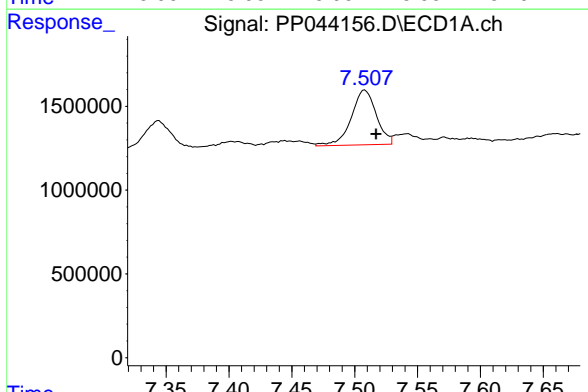
R.T.: 7.047 min
 Delta R.T.: -0.009 min
 Response: 3899777
 Conc: 48.85 ng/ml

Instrument :
 ECD_P
 ClientSampleId :



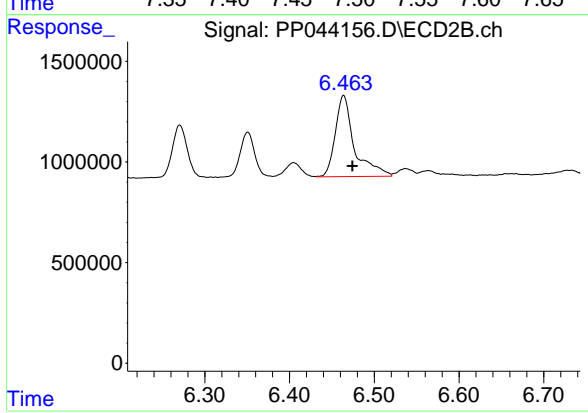
#29 AR-1254-4

R.T.: 6.012 min
 Delta R.T.: -0.009 min
 Response: 4524377
 Conc: 57.33 ng/ml



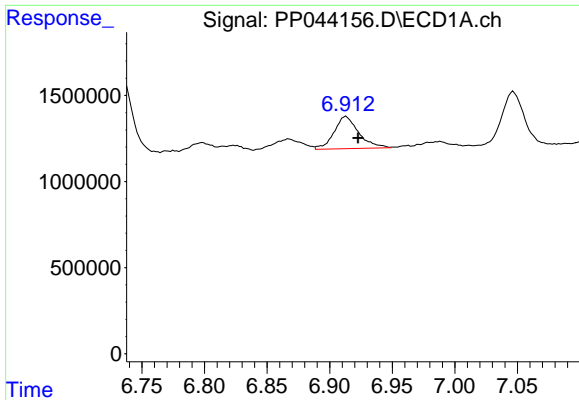
#30 AR-1254-5

R.T.: 7.508 min
 Delta R.T.: -0.009 min
 Response: 4529950
 Conc: 52.82 ng/ml



#30 AR-1254-5

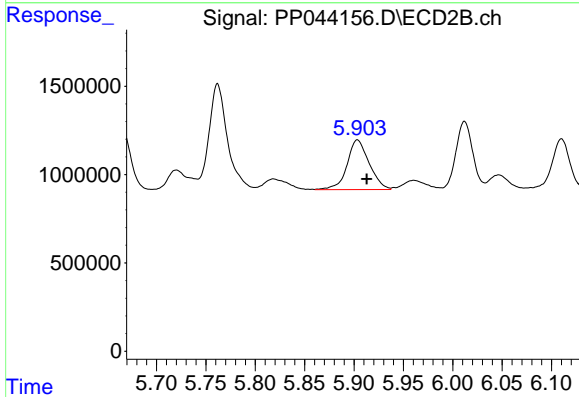
R.T.: 6.464 min
 Delta R.T.: -0.010 min
 Response: 6325977
 Conc: 54.70 ng/ml



#31 AR-1260-1

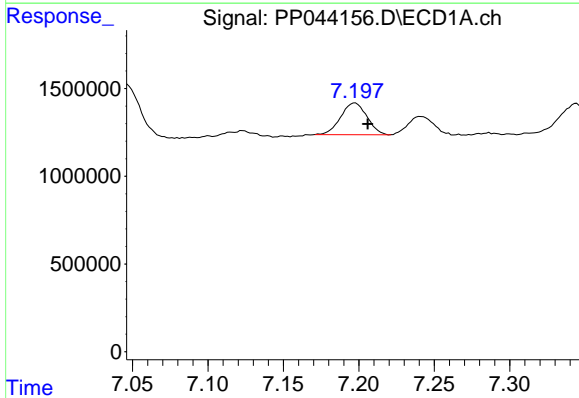
R.T.: 6.913 min
 Delta R.T.: -0.010 min
 Response: 2575710
 Conc: 30.76 ng/ml

Instrument :
 ECD_P
 ClientSampleId :



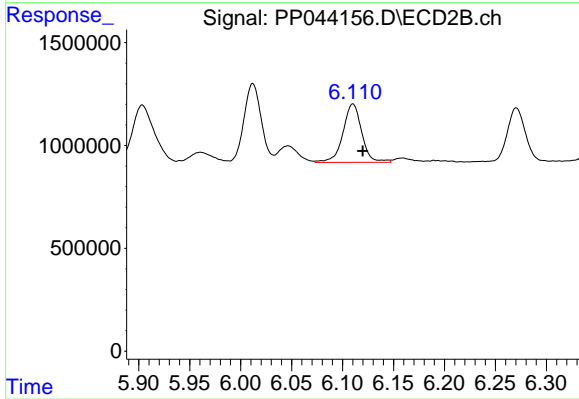
#31 AR-1260-1

R.T.: 5.903 min
 Delta R.T.: -0.010 min
 Response: 4376692
 Conc: 54.73 ng/ml



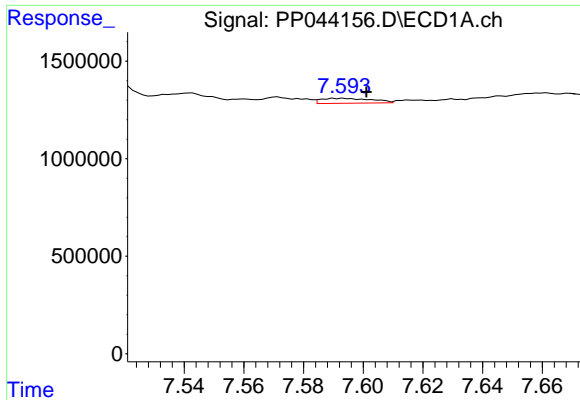
#32 AR-1260-2

R.T.: 7.197 min
 Delta R.T.: -0.008 min
 Response: 2189845
 Conc: 24.19 ng/ml



#32 AR-1260-2

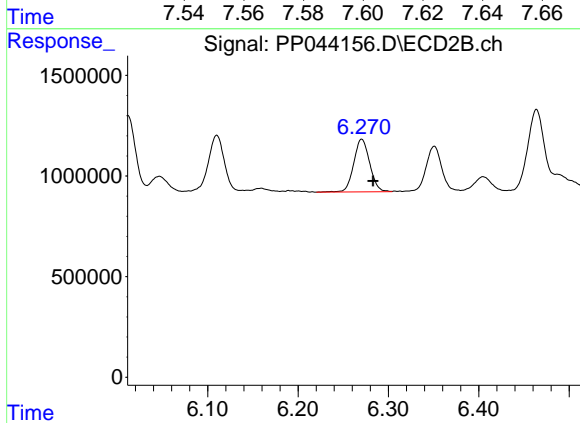
R.T.: 6.110 min
 Delta R.T.: -0.010 min
 Response: 3635700
 Conc: 37.23 ng/ml



#33 AR-1260-3

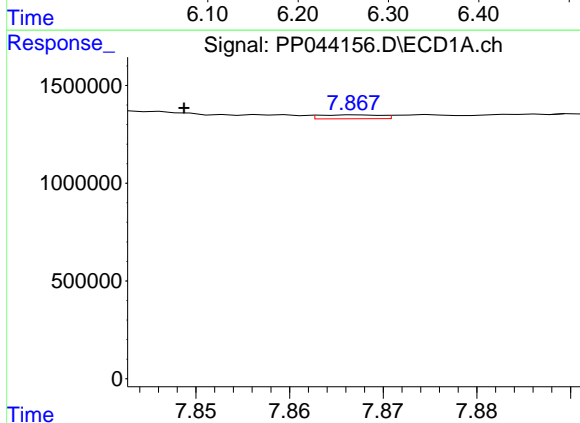
R.T.: 7.593 min
 Delta R.T.: -0.008 min
 Response: 293114
 Conc: 4.04 ng/ml

Instrument :
 ECD_P
 ClientSampleId :



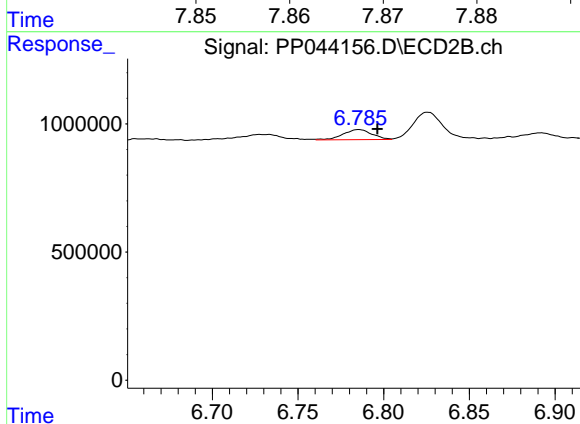
#33 AR-1260-3

R.T.: 6.270 min
 Delta R.T.: -0.013 min
 Response: 3209224
 Conc: 35.15 ng/ml



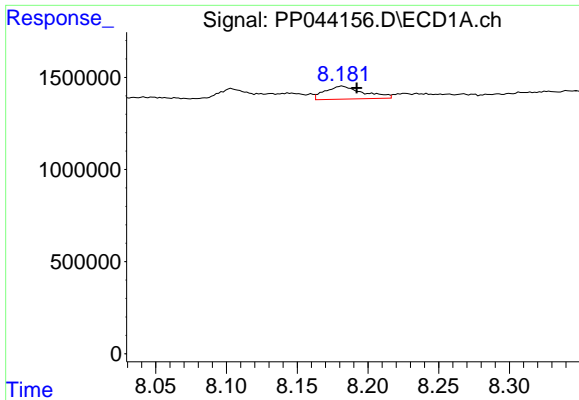
#34 AR-1260-4

R.T.: 7.867 min
 Delta R.T.: 0.018 min
 Response: 91022
 Conc: 1.06 ng/ml



#34 AR-1260-4

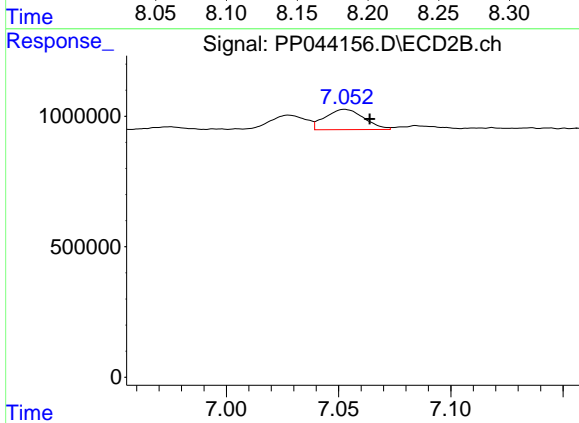
R.T.: 6.785 min
 Delta R.T.: -0.011 min
 Response: 464281
 Conc: 5.74 ng/ml



#35 AR-1260-5

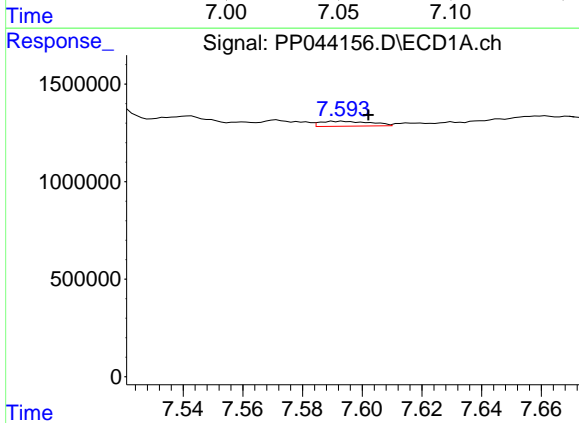
R.T.: 8.182 min
 Delta R.T.: -0.010 min
 Response: 1321070
 Conc: 8.52 ng/ml

Instrument :
 ECD_P
 ClientSampleId :



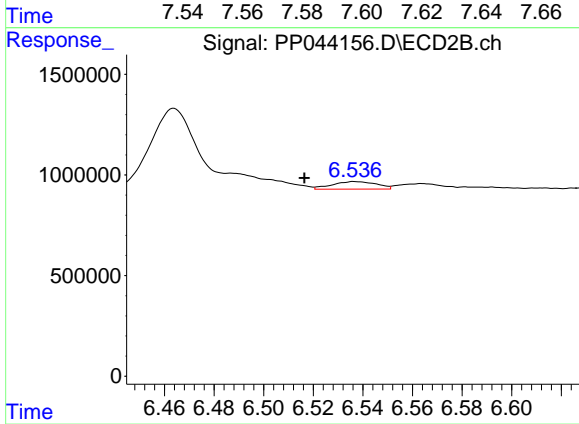
#35 AR-1260-5

R.T.: 7.053 min
 Delta R.T.: -0.011 min
 Response: 937988
 Conc: 5.07 ng/ml



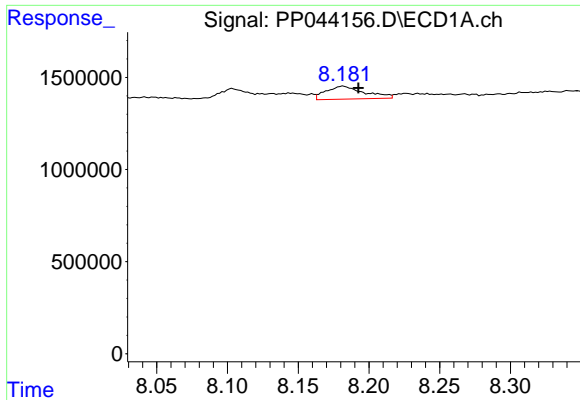
#36 AR-1262-1

R.T.: 7.593 min
 Delta R.T.: -0.009 min
 Response: 293114
 Conc: 2.97 ng/ml



#36 AR-1262-1

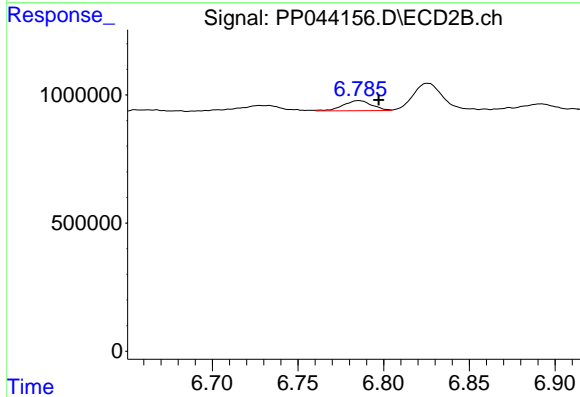
R.T.: 6.537 min
 Delta R.T.: 0.020 min
 Response: 470401
 Conc: 4.28 ng/ml



#37 AR-1262-2

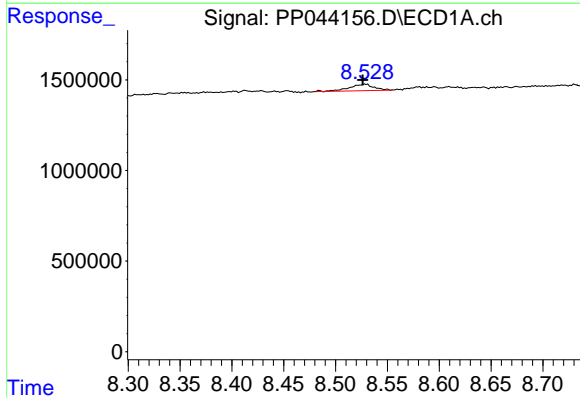
R.T.: 8.182 min
 Delta R.T.: -0.011 min
 Response: 1321070
 Conc: 8.18 ng/ml

Instrument :
 ECD_P
 ClientSampleId :



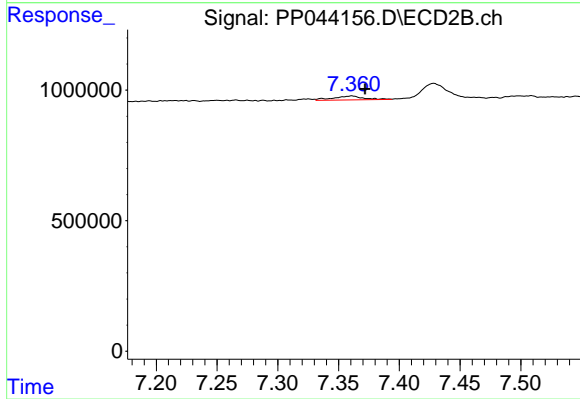
#37 AR-1262-2

R.T.: 6.785 min
 Delta R.T.: -0.012 min
 Response: 464281
 Conc: 4.55 ng/ml



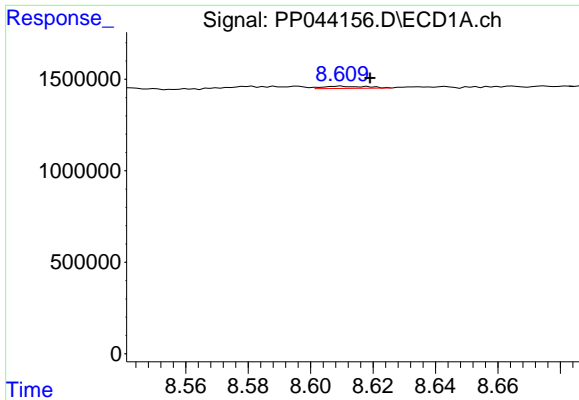
#38 AR-1262-3

R.T.: 8.529 min
 Delta R.T.: 0.003 min
 Response: 590518
 Conc: 5.40 ng/ml



#38 AR-1262-3

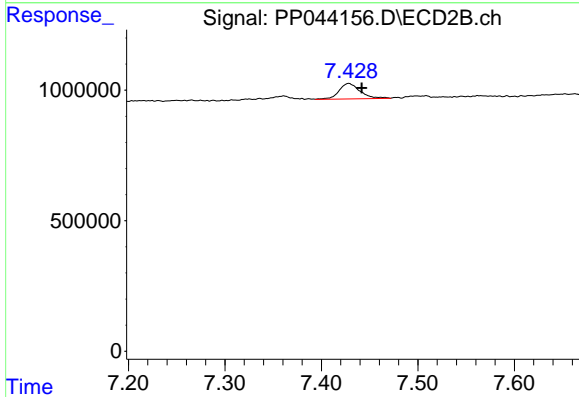
R.T.: 7.361 min
 Delta R.T.: -0.011 min
 Response: 267715
 Conc: 3.14 ng/ml



#39 AR-1262-4

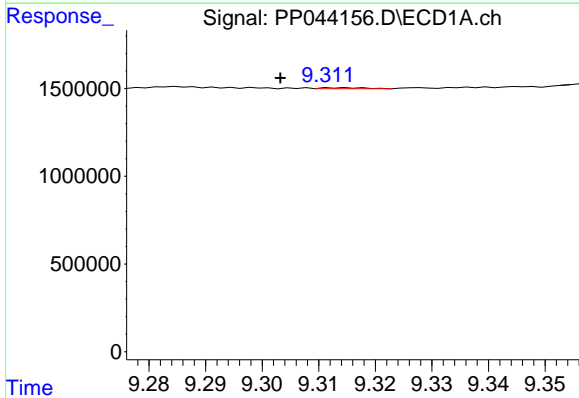
R.T.: 8.610 min
 Delta R.T.: -0.009 min
 Response: 117765
 Conc: 2.46 ng/ml

Instrument :
 ECD_P
 ClientSampleId :



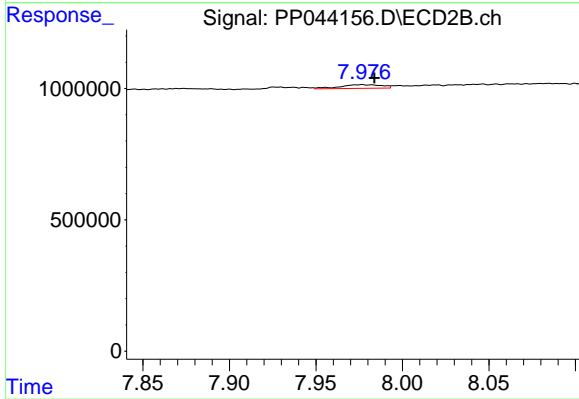
#39 AR-1262-4

R.T.: 7.428 min
 Delta R.T.: -0.013 min
 Response: 911267
 Conc: 5.87 ng/ml



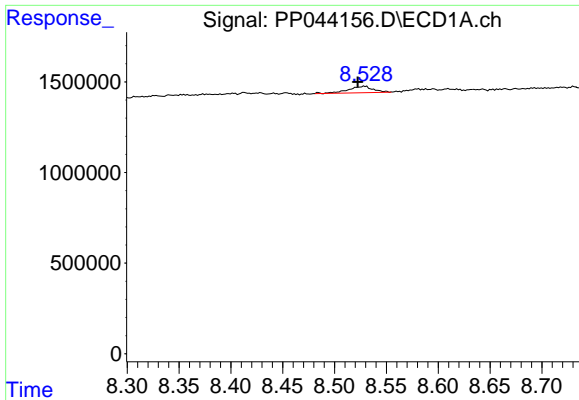
#40 AR-1262-5

R.T.: 9.315 min
 Delta R.T.: 0.012 min
 Response: 28924
 Conc: 0.52 ng/ml



#40 AR-1262-5

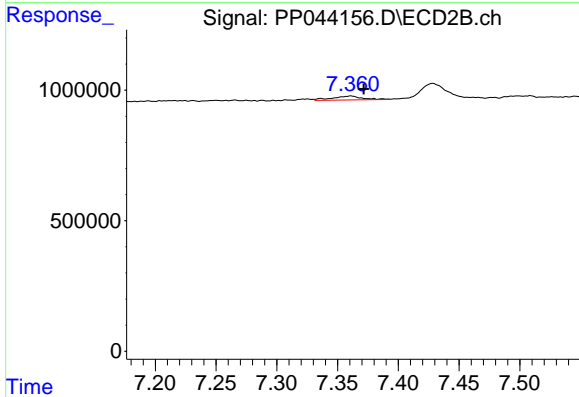
R.T.: 7.976 min
 Delta R.T.: -0.007 min
 Response: 235434
 Conc: 3.03 ng/ml



#41 AR-1268-1

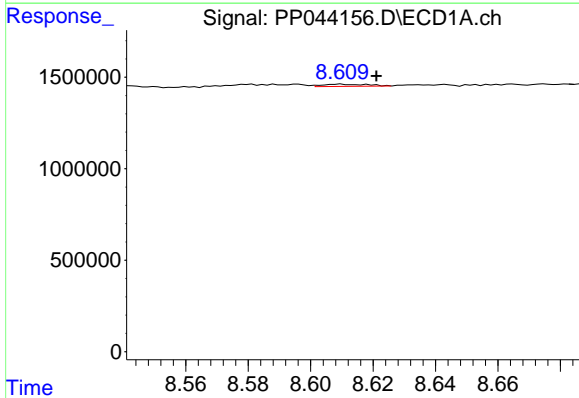
R.T.: 8.529 min
 Delta R.T.: 0.007 min
 Response: 590518
 Conc: 3.03 ng/ml

Instrument :
 ECD_P
 ClientSampleId :



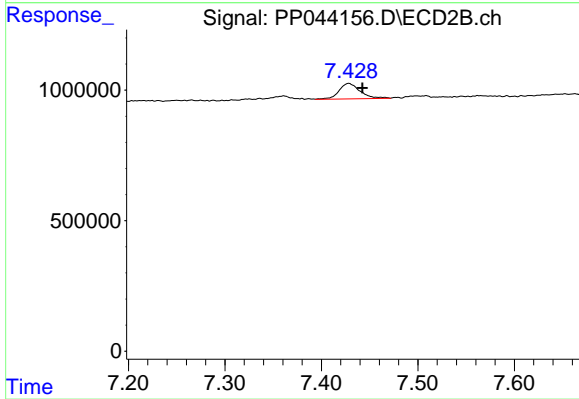
#41 AR-1268-1

R.T.: 7.361 min
 Delta R.T.: -0.011 min
 Response: 267715
 Conc: 1.06 ng/ml



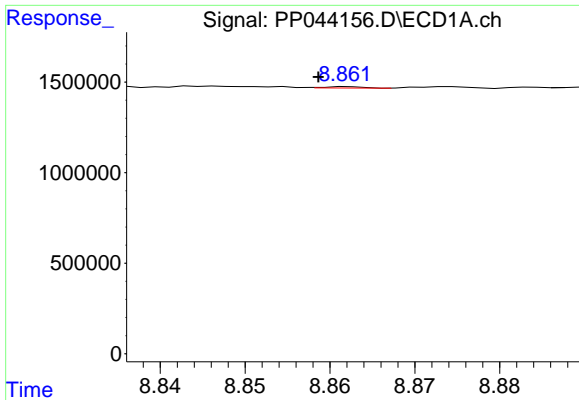
#42 AR-1268-2

R.T.: 8.610 min
 Delta R.T.: -0.011 min
 Response: 117765
 Conc: 0.67 ng/ml



#42 AR-1268-2

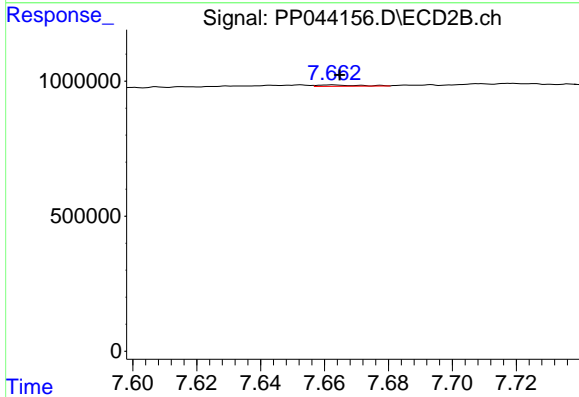
R.T.: 7.428 min
 Delta R.T.: -0.014 min
 Response: 911267
 Conc: 4.03 ng/ml



#43 AR-1268-3

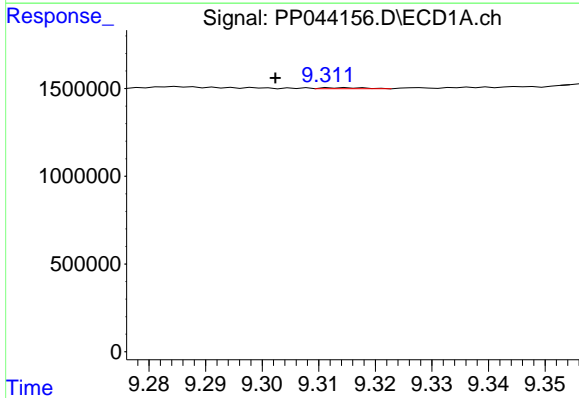
R.T.: 8.862 min
 Delta R.T.: 0.004 min
 Response: 22868
 Conc: 0.15 ng/ml

Instrument :
 ECD_P
 ClientSampleId :



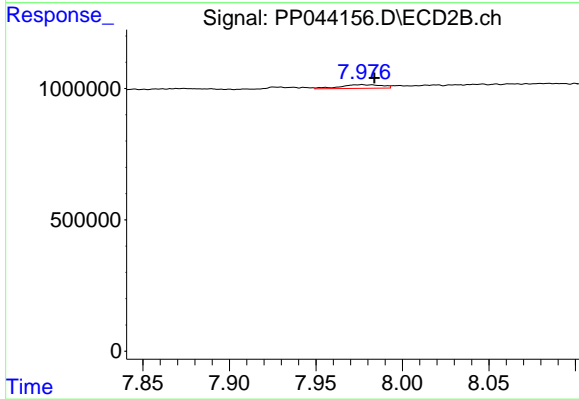
#43 AR-1268-3

R.T.: 7.662 min
 Delta R.T.: -0.002 min
 Response: 43020
 Conc: 0.22 ng/ml



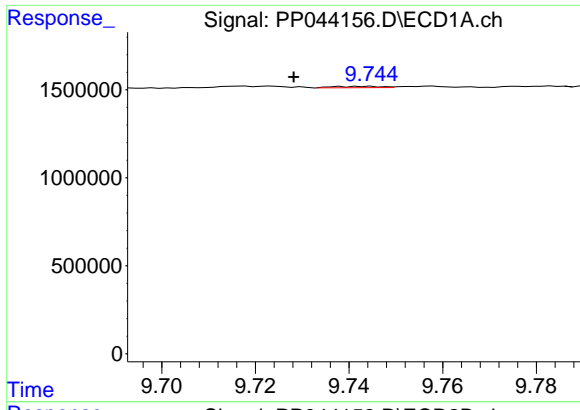
#44 AR-1268-4

R.T.: 9.315 min
 Delta R.T.: 0.013 min
 Response: 28924
 Conc: 0.46 ng/ml



#44 AR-1268-4

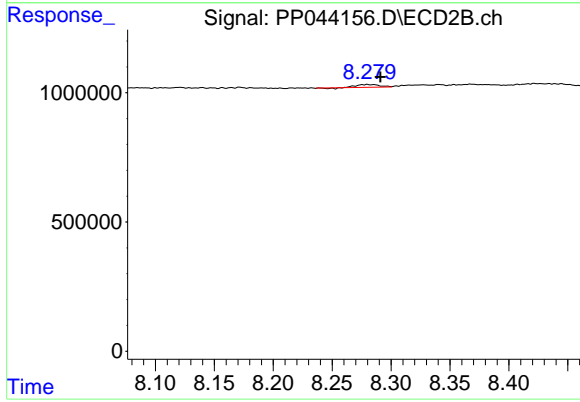
R.T.: 7.976 min
 Delta R.T.: -0.007 min
 Response: 235434
 Conc: 2.62 ng/ml



#45 AR-1268-5

R.T.: 9.738 min
 Delta R.T.: 0.010 min
 Response: 54216
 Conc: 0.12 ng/ml

Instrument :
 ECD_P
 ClientSampleId :



#45 AR-1268-5

R.T.: 8.280 min
 Delta R.T.: -0.011 min
 Response: 137048
 Conc: 0.23 ng/ml