

Data Path : Z:\pestpcbsrv\HPCHEM1\ECD_P\Data\PP030222\
 Data File : PP044171.D
 Signal(s) : Signal #1: ECD1A.ch Signal #2: ECD2B.ch
 Acq On : 02 Mar 2022 13:54
 Operator : YP\AJ
 Sample : AR1660ICC050
 Misc :
 ALS Vial : 7 Sample Multiplier: 1

Instrument :
 ECD_P
ClientSampleId :
 AR1660ICC050

Integration File signal 1: autoint1.e
 Integration File signal 2: autoint2.e
 Quant Time: Mar 02 14:31:12 2022
 Quant Method : Z:\pestpcbsrv\HPCHEM1\ECD_P\methods\PP030222.M
 Quant Title : GC EXTRACTABLES
 QLast Update : Wed Mar 02 14:27:58 2022
 Response via : Initial Calibration
 Integrator: ChemStation

Volume Inj. : 2 µl
 Signal #1 Phase : ZB-MR1 Signal #2 Phase: ZB-MR2
 Signal #1 Info : 30Mx0.32mmx 0.50µ Signal #2 Info : 30M x 0.32mm x 0.25µm

Compound	RT#1	RT#2	Resp#1	Resp#2	ng/ml	ng/ml

System Monitoring Compounds						
1) SA Tetrachlo...	3.911	3.166	10577814	9809846	5.008	5.746
2) SA Decachlor...	10.053	8.537	7408291	9036453	5.102	5.814
Target Compounds						
3) L1 AR-1016-1	5.165	4.312	3644633	3316680	52.749	60.596
4) L1 AR-1016-2	5.187	4.331	5492222	4536631	53.069	59.066
5) L1 AR-1016-3	5.255	4.515	3452985	2522474	54.727	59.218
6) L1 AR-1016-4	5.360	4.565	2820095	2032525	53.770	61.305
7) L1 AR-1016-5	5.681	4.789	2677176	2400671	52.814	57.969
31) L7 AR-1260-1	6.911	5.900	5210997	4923212	60.806	63.180
32) L7 AR-1260-2	7.194	6.107	5302751	6137735	54.469	64.079
33) L7 AR-1260-3	7.590	6.269	3522814	5642261	53.015	62.421
34) L7 AR-1260-4	7.838	6.782	5150693	4153585	65.130	59.013
35) L7 AR-1260-5	8.181	7.050	8436985	9414706	58.556	56.717

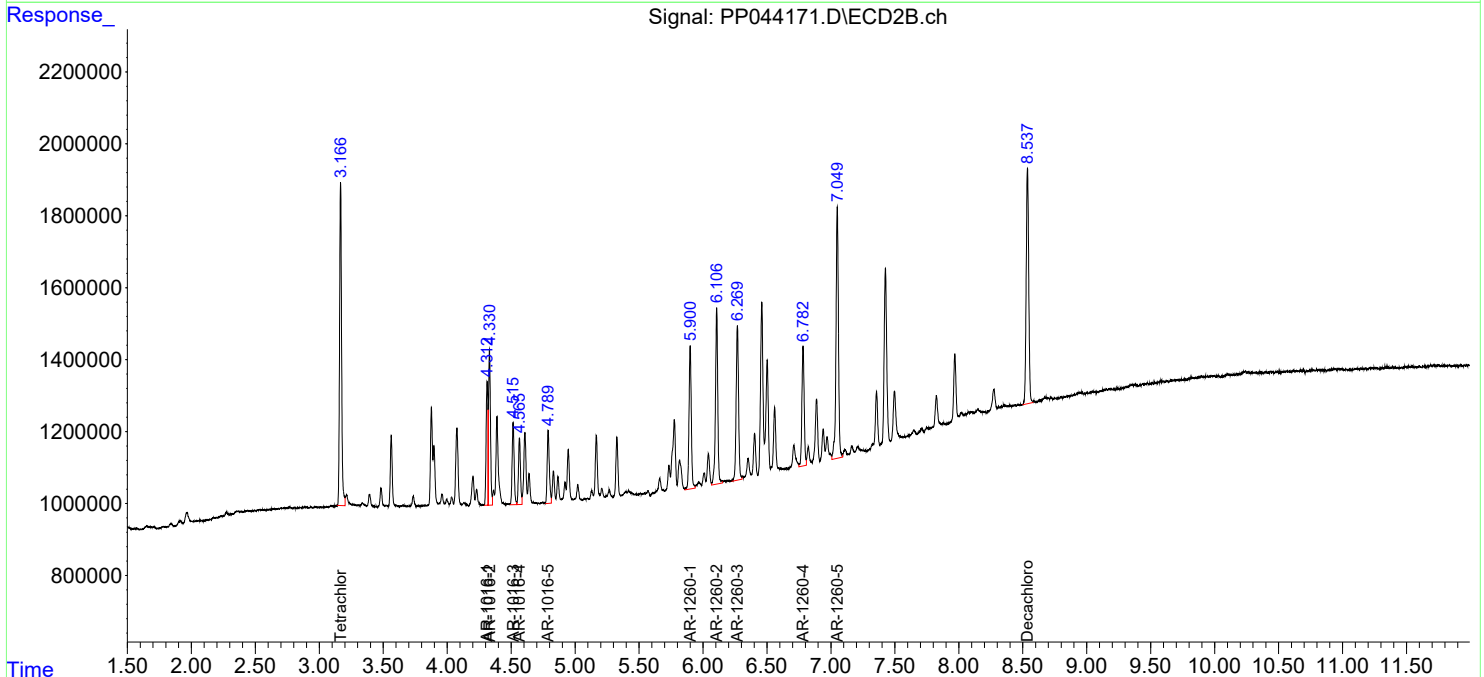
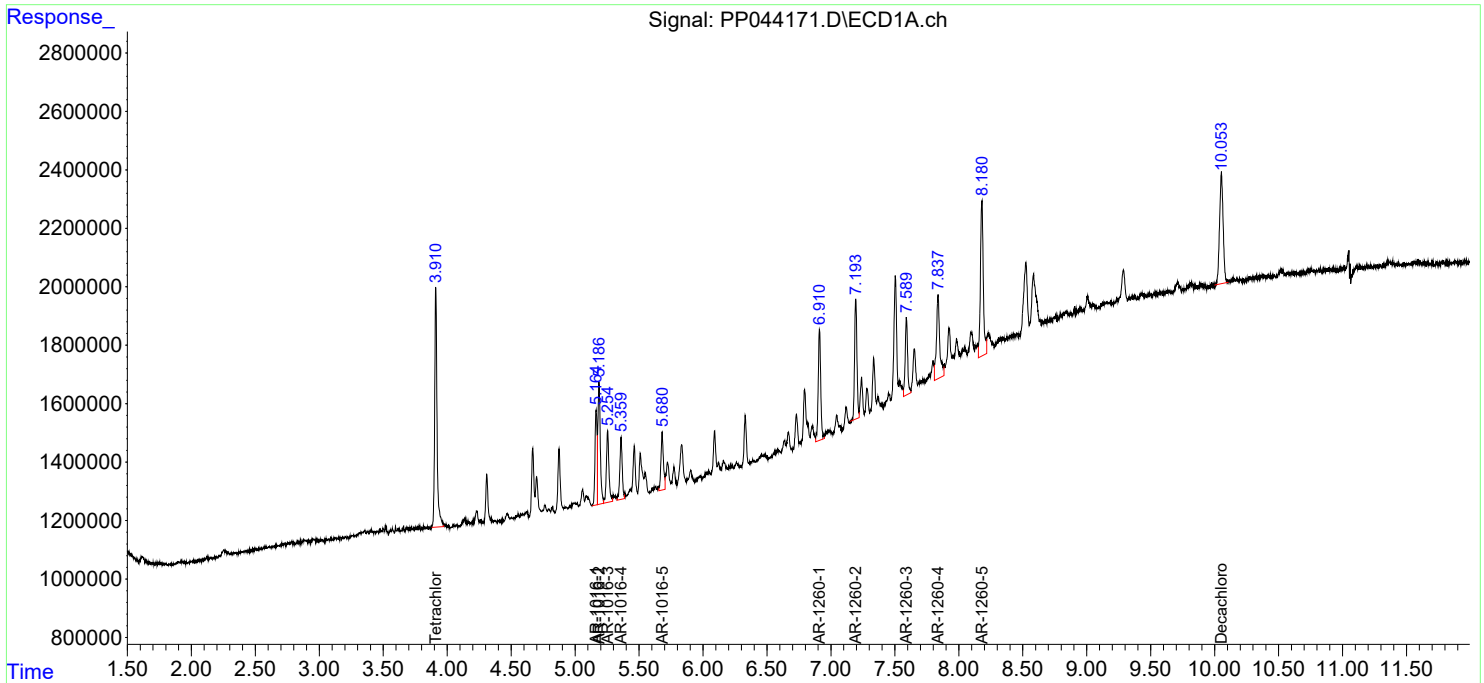
(f)=RT Delta > 1/2 Window (#)=Amounts differ by > 25% (m)=manual int.

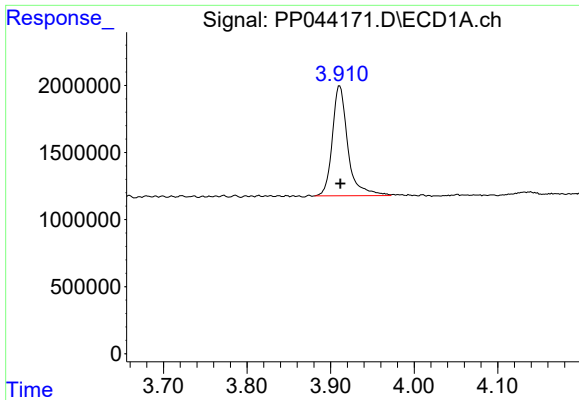
Data Path : Z:\pestpcbsrv\HPCHEM1\ECD_P\Data\PP030222\
 Data File : PP044171.D
 Signal(s) : Signal #1: ECD1A.ch Signal #2: ECD2B.ch
 Acq On : 02 Mar 2022 13:54
 Operator : YP\AJ
 Sample : AR1660ICC050
 Misc :
 ALS Vial : 7 Sample Multiplier: 1

Instrument :
 ECD_P
 ClientSampleId :
 AR1660ICC050

Integration File signal 1: autoint1.e
 Integration File signal 2: autoint2.e
 Quant Time: Mar 02 14:31:12 2022
 Quant Method : Z:\pestpcbsrv\HPCHEM1\ECD_P\methods\PP030222.M
 Quant Title : GC EXTRACTABLES
 QLast Update : Wed Mar 02 14:27:58 2022
 Response via : Initial Calibration
 Integrator: ChemStation

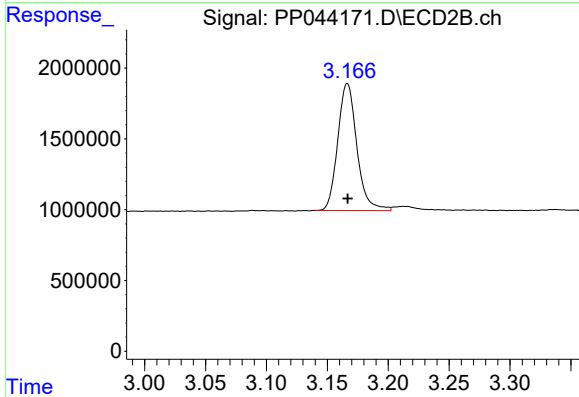
Volume Inj. : 2 µl
 Signal #1 Phase : ZB-MR1 Signal #2 Phase: ZB-MR2
 Signal #1 Info : 30Mx0.32mmx 0.50µ Signal #2 Info : 30M x 0.32mm x 0.25µm



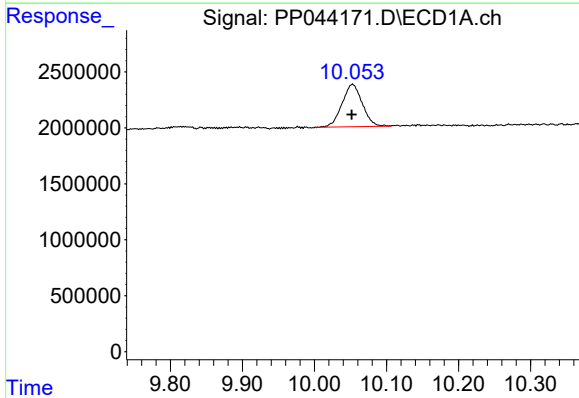


#1 Tetrachloro-m-xylene
 R.T.: 3.911 min
 Delta R.T.: -0.001 min
 Response: 10577814
 Conc: 5.01 ng/ml

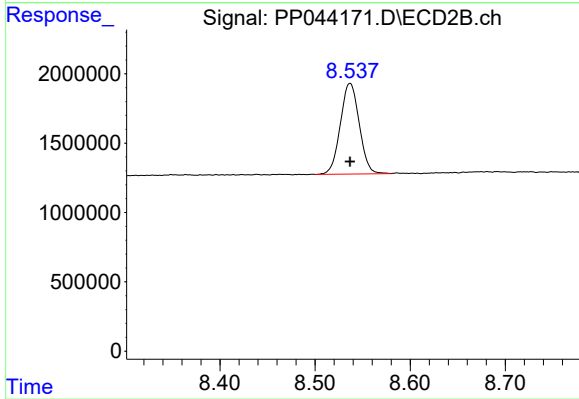
Instrument :
 ECD_P
 ClientSampleId :
 AR1660ICC050



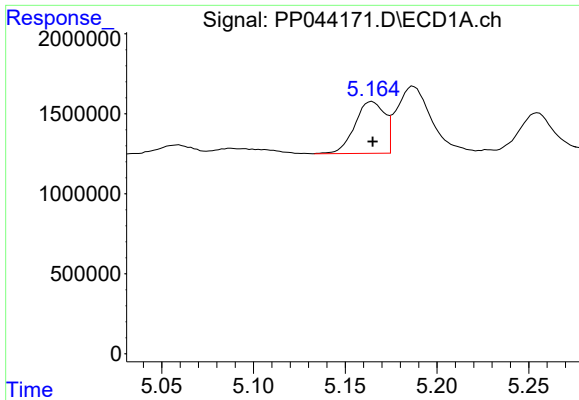
#1 Tetrachloro-m-xylene
 R.T.: 3.166 min
 Delta R.T.: 0.000 min
 Response: 9809846
 Conc: 5.75 ng/ml



#2 Decachlorobiphenyl
 R.T.: 10.053 min
 Delta R.T.: 0.002 min
 Response: 7408291
 Conc: 5.10 ng/ml



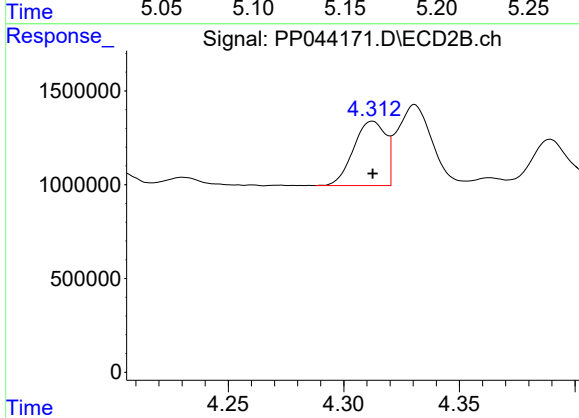
#2 Decachlorobiphenyl
 R.T.: 8.537 min
 Delta R.T.: 0.000 min
 Response: 9036453
 Conc: 5.81 ng/ml



#3 AR-1016-1

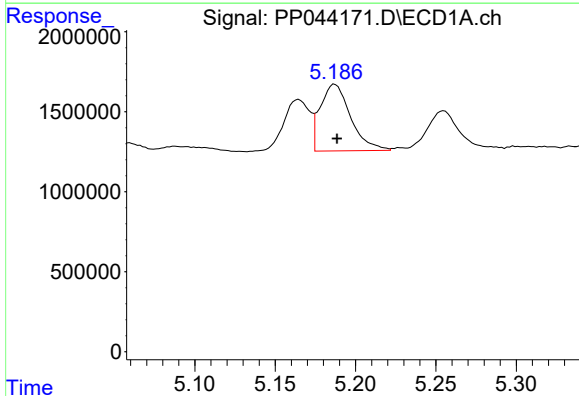
R.T.: 5.165 min
 Delta R.T.: 0.000 min
 Response: 3644633
 Conc: 52.75 ng/ml

Instrument :
 ECD_P
 ClientSampleId :
 AR1660ICC050



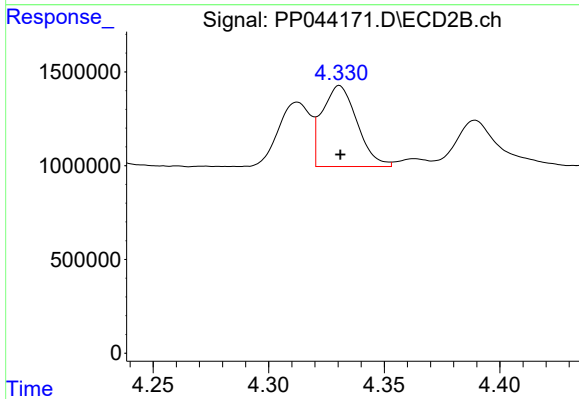
#3 AR-1016-1

R.T.: 4.312 min
 Delta R.T.: 0.000 min
 Response: 3316680
 Conc: 60.60 ng/ml



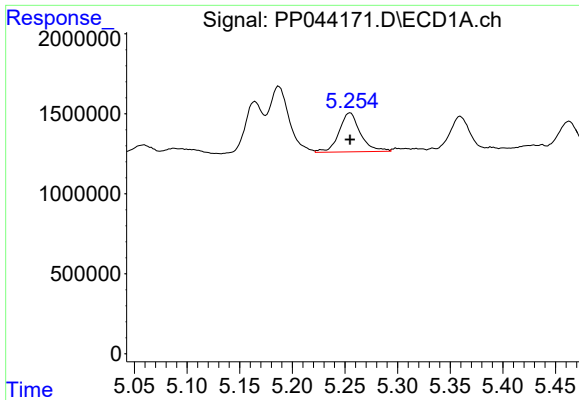
#4 AR-1016-2

R.T.: 5.187 min
 Delta R.T.: -0.001 min
 Response: 5492222
 Conc: 53.07 ng/ml



#4 AR-1016-2

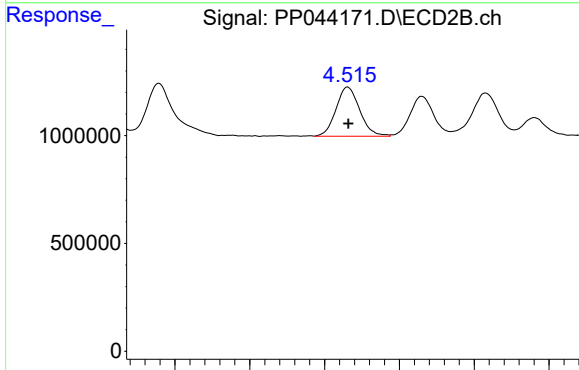
R.T.: 4.331 min
 Delta R.T.: 0.000 min
 Response: 4536631
 Conc: 59.07 ng/ml



#5 AR-1016-3

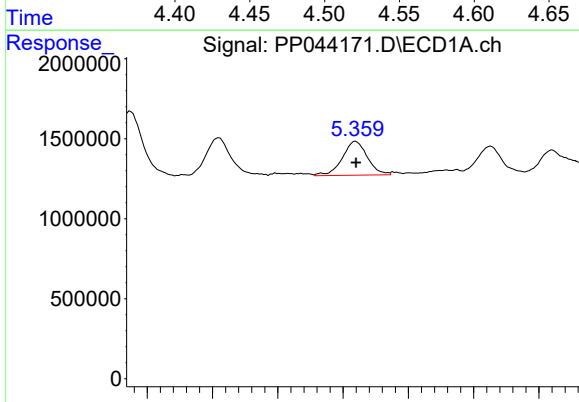
R.T.: 5.255 min
 Delta R.T.: 0.000 min
 Response: 3452985
 Conc: 54.73 ng/ml

Instrument :
 ECD_P
 ClientSampleId :
 AR1660ICC050



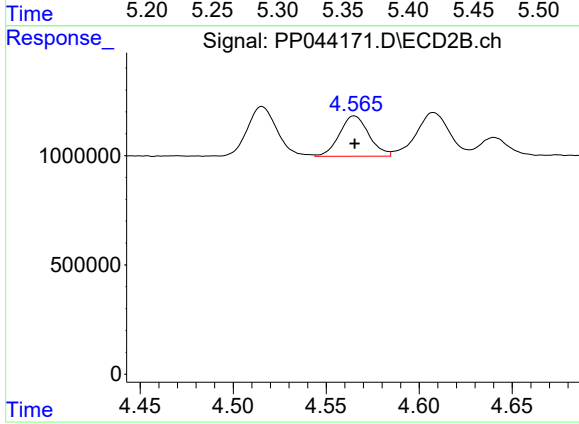
#5 AR-1016-3

R.T.: 4.515 min
 Delta R.T.: 0.000 min
 Response: 2522474
 Conc: 59.22 ng/ml



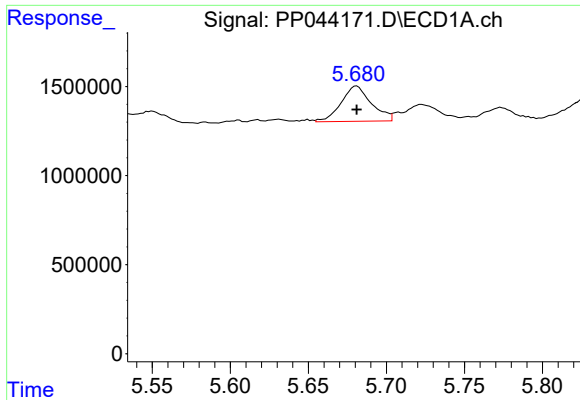
#6 AR-1016-4

R.T.: 5.360 min
 Delta R.T.: 0.000 min
 Response: 2820095
 Conc: 53.77 ng/ml



#6 AR-1016-4

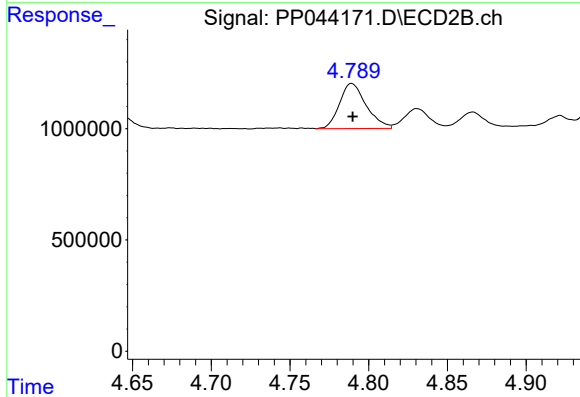
R.T.: 4.565 min
 Delta R.T.: 0.000 min
 Response: 2032525
 Conc: 61.31 ng/ml



#7 AR-1016-5

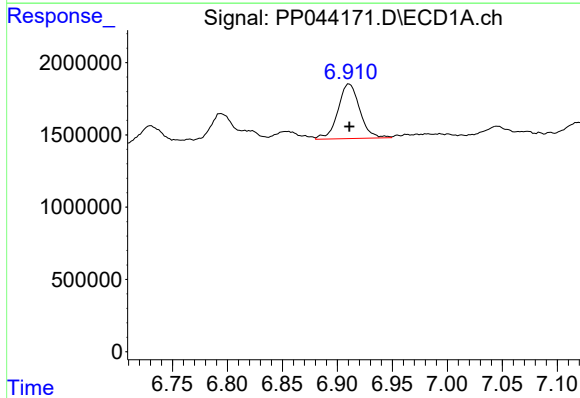
R.T.: 5.681 min
 Delta R.T.: 0.000 min
 Response: 2677176
 Conc: 52.81 ng/ml

Instrument :
 ECD_P
 ClientSampleId :
 AR1660ICC050



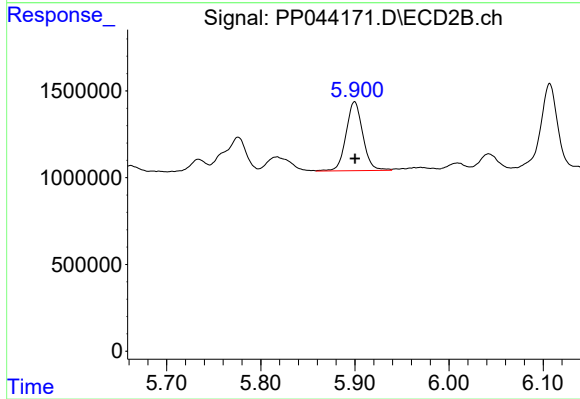
#7 AR-1016-5

R.T.: 4.789 min
 Delta R.T.: 0.000 min
 Response: 2400671
 Conc: 57.97 ng/ml



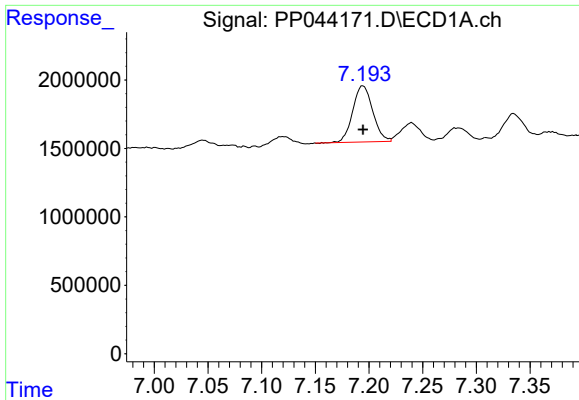
#31 AR-1260-1

R.T.: 6.911 min
 Delta R.T.: 0.000 min
 Response: 5210997
 Conc: 60.81 ng/ml



#31 AR-1260-1

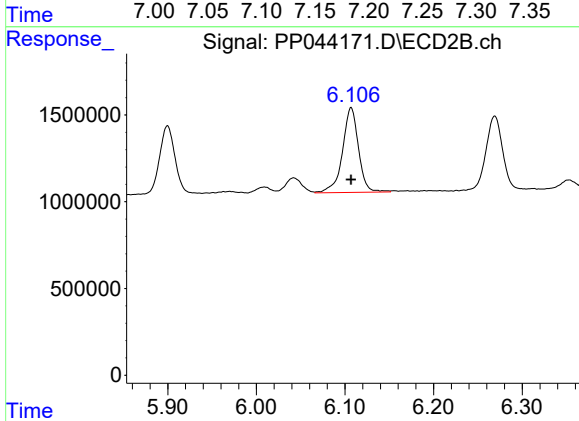
R.T.: 5.900 min
 Delta R.T.: 0.000 min
 Response: 4923212
 Conc: 63.18 ng/ml



#32 AR-1260-2

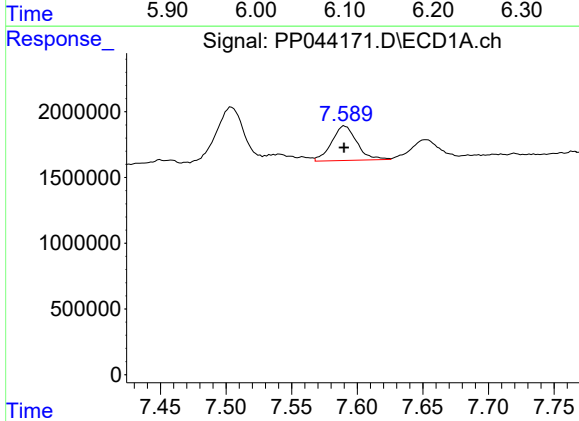
R.T.: 7.194 min
 Delta R.T.: 0.000 min
 Response: 5302751
 Conc: 54.47 ng/ml

Instrument :
 ECD_P
 ClientSampleId :
 AR1660ICC050



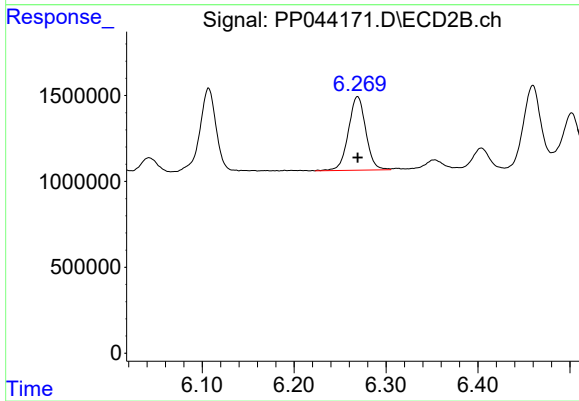
#32 AR-1260-2

R.T.: 6.107 min
 Delta R.T.: 0.000 min
 Response: 6137735
 Conc: 64.08 ng/ml



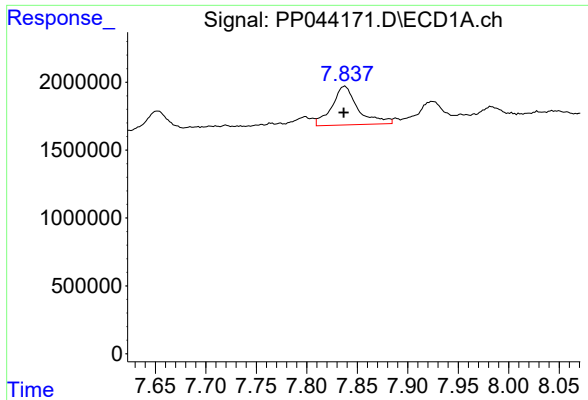
#33 AR-1260-3

R.T.: 7.590 min
 Delta R.T.: 0.000 min
 Response: 3522814
 Conc: 53.01 ng/ml



#33 AR-1260-3

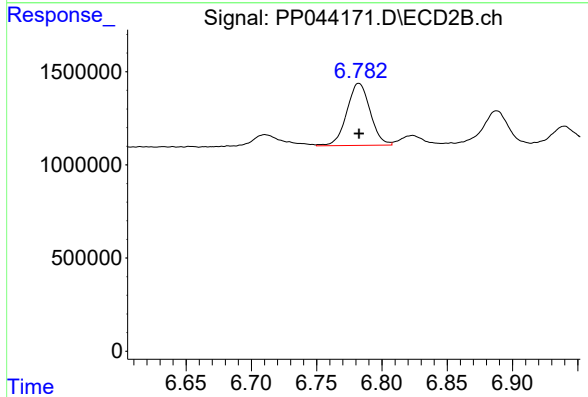
R.T.: 6.269 min
 Delta R.T.: 0.000 min
 Response: 5642261
 Conc: 62.42 ng/ml



#34 AR-1260-4

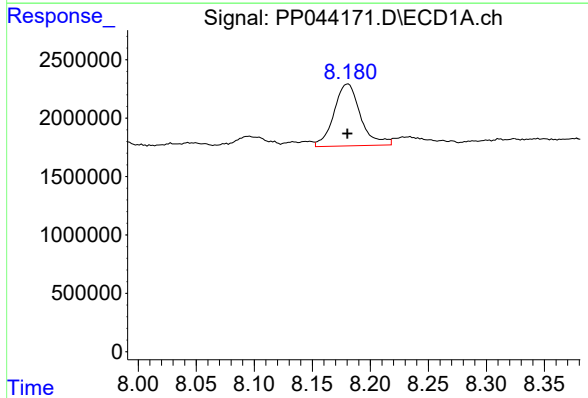
R.T.: 7.838 min
 Delta R.T.: 0.001 min
 Response: 5150693
 Conc: 65.13 ng/ml

Instrument :
 ECD_P
 ClientSampleId :
 AR1660ICC050



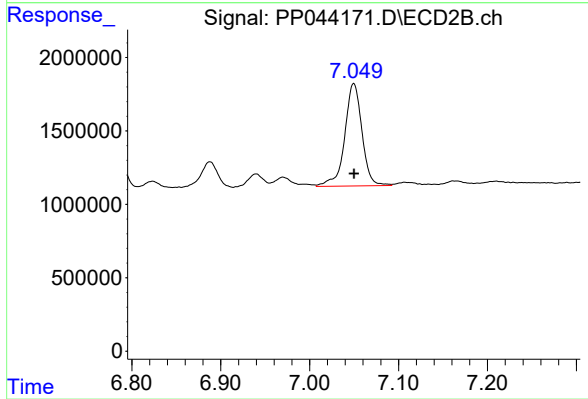
#34 AR-1260-4

R.T.: 6.782 min
 Delta R.T.: 0.000 min
 Response: 4153585
 Conc: 59.01 ng/ml



#35 AR-1260-5

R.T.: 8.181 min
 Delta R.T.: 0.000 min
 Response: 8436985
 Conc: 58.56 ng/ml



#35 AR-1260-5

R.T.: 7.050 min
 Delta R.T.: 0.000 min
 Response: 9414706
 Conc: 56.72 ng/ml