

Data Path : Z:\pestpcbsrv\HPCHEM1\ECD_P\Data\PP030222\
 Data File : PP044192.D
 Signal(s) : Signal #1: ECD1A.ch Signal #2: ECD2B.ch
 Acq On : 02 Mar 2022 19:14
 Operator : YP\AJ
 Sample : AR1268ICC500
 Misc :
 ALS Vial : 28 Sample Multiplier: 1

Instrument :
 ECD_P
ClientSampleId :
 AR1268ICC500

Integration File signal 1: autoint1.e
 Integration File signal 2: autoint2.e
 Quant Time: Mar 03 01:45:46 2022
 Quant Method : Z:\pestpcbsrv\HPCHEM1\ECD_P\methods\PP030222.M
 Quant Title : GC EXTRACTABLES
 QLast Update : Thu Mar 03 01:45:24 2022
 Response via : Initial Calibration
 Integrator: ChemStation

Volume Inj. : 2 µl
 Signal #1 Phase : ZB-MR1 Signal #2 Phase: ZB-MR2
 Signal #1 Info : 30Mx0.32mmx 0.50µ Signal #2 Info : 30M x 0.32mm x 0.25µm

Compound	RT#1	RT#2	Resp#1	Resp#2	ng/ml	ng/ml

System Monitoring Compounds						
1) SA Tetrachlo...	3.912	3.166	104.0E6	88998315	50.000	50.000
2) SA Decachlor...	10.052	8.536	113.9E6	127.0E6	50.000	50.000
Target Compounds						
41) L9 AR-1268-1	8.509	7.356	98706307	111.9E6	500.000	500.000
42) L9 AR-1268-2	8.607	7.427	90850797	101.4E6	500.000	500.000
43) L9 AR-1268-3	8.844	7.649	78398416	86577700	500.000	500.000
44) L9 AR-1268-4	9.285	7.968	32307195	40282052	500.000	500.000
45) L9 AR-1268-5	9.709	8.274	238.3E6	270.1E6	500.000	500.000

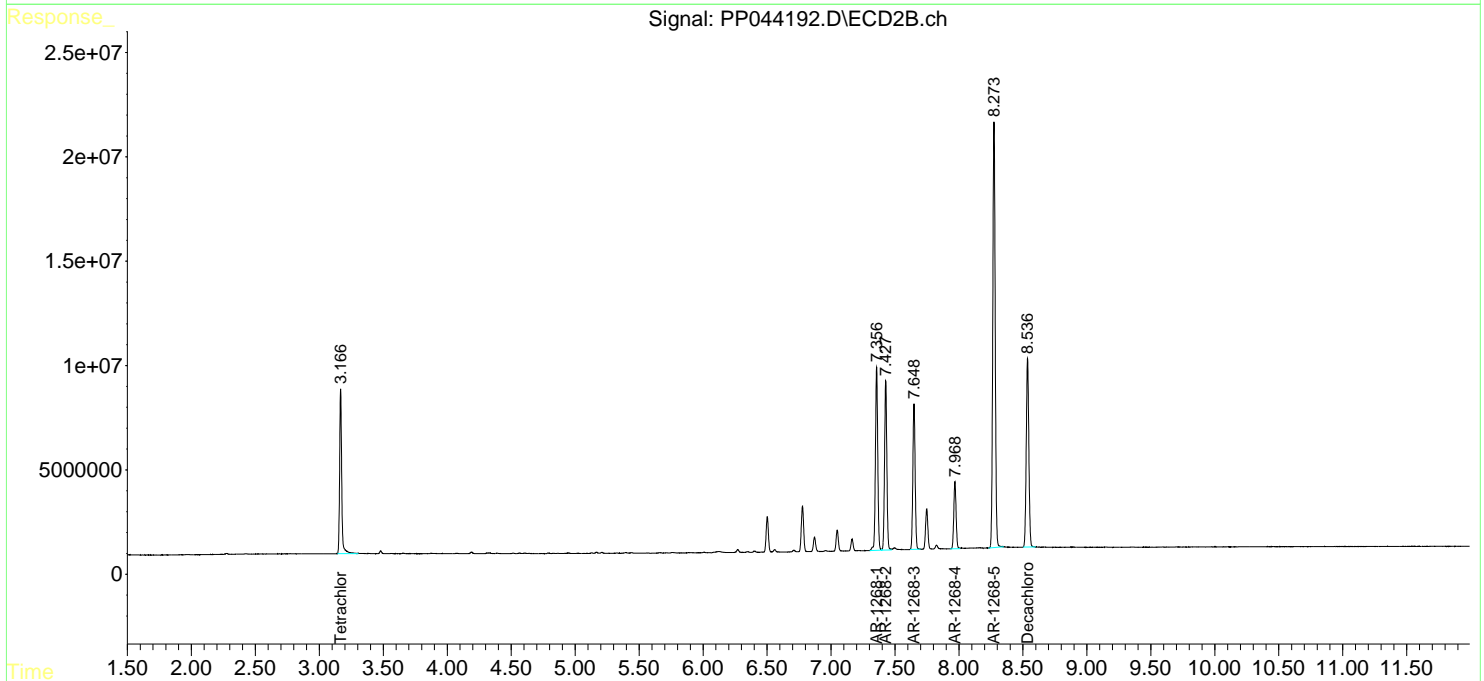
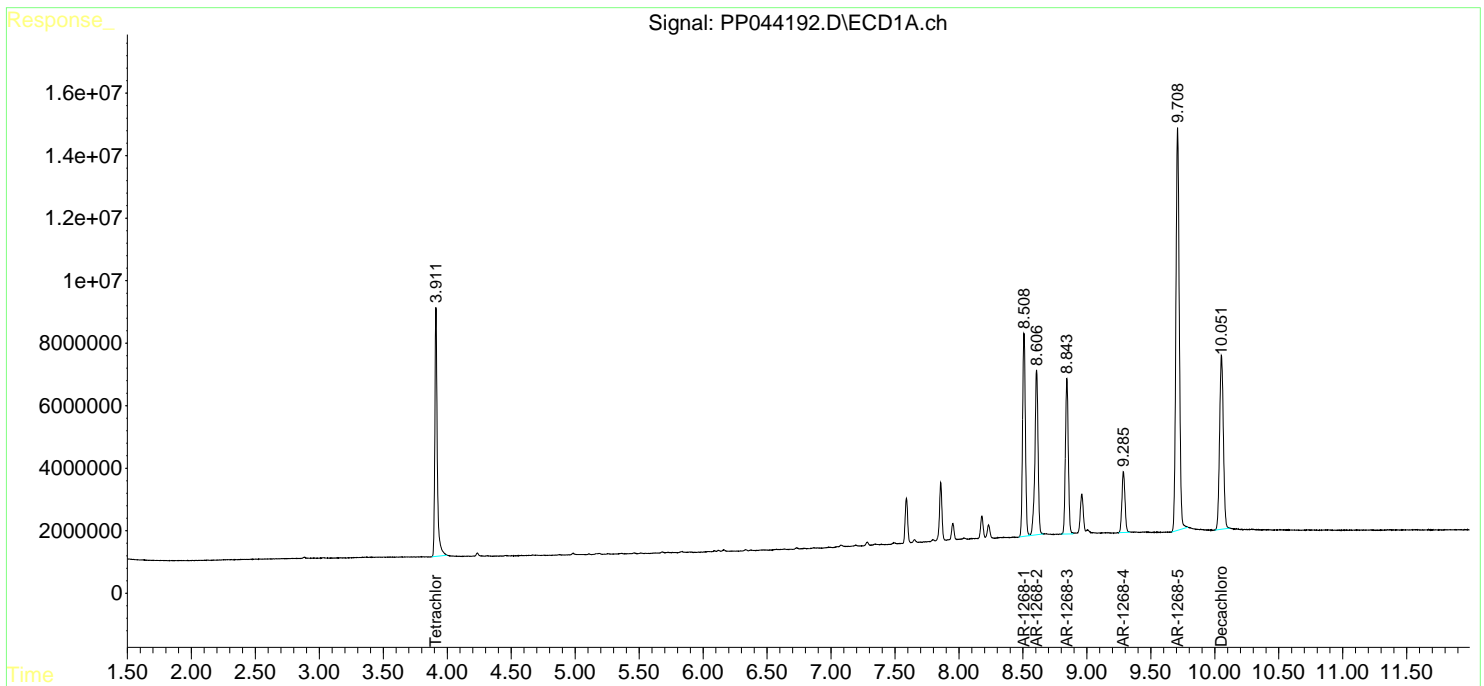
(f)=RT Delta > 1/2 Window (#)=Amounts differ by > 25% (m)=manual int.

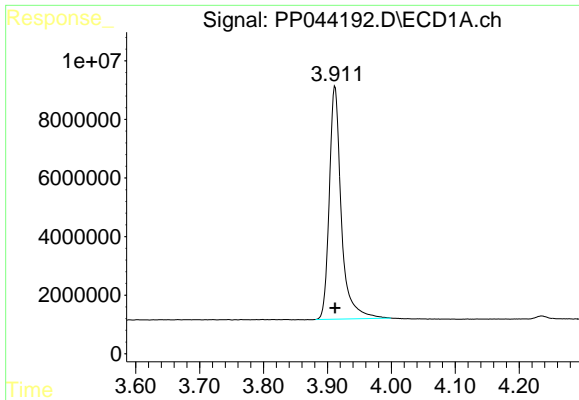
Data Path : Z:\pestpcbsrv\HPCHEM1\ECD_P\Data\PP030222\
 Data File : PP044192.D
 Signal(s) : Signal #1: ECD1A.ch Signal #2: ECD2B.ch
 Acq On : 02 Mar 2022 19:14
 Operator : YP\AJ
 Sample : AR1268ICC500
 Misc :
 ALS Vial : 28 Sample Multiplier: 1

Instrument :
 ECD_P
 ClientSampleId :
 AR1268ICC500

Integration File signal 1: autoint1.e
 Integration File signal 2: autoint2.e
 Quant Time: Mar 03 01:45:46 2022
 Quant Method : Z:\pestpcbsrv\HPCHEM1\ECD_P\methods\PP030222.M
 Quant Title : GC EXTRACTABLES
 QLast Update : Thu Mar 03 01:45:24 2022
 Response via : Initial Calibration
 Integrator: ChemStation

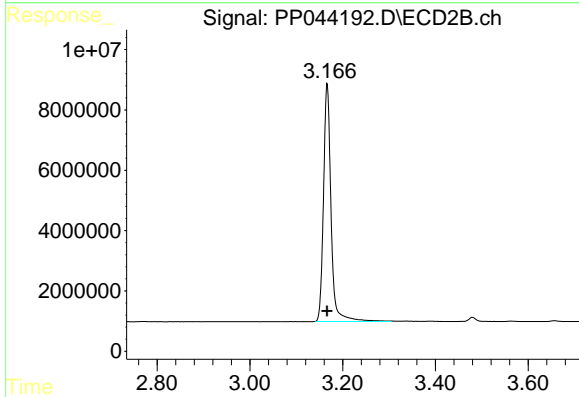
Volume Inj. : 2 µl
 Signal #1 Phase : ZB-MR1 Signal #2 Phase: ZB-MR2
 Signal #1 Info : 30Mx0.32mmx 0.50µ Signal #2 Info : 30M x 0.32mm x 0.25µm



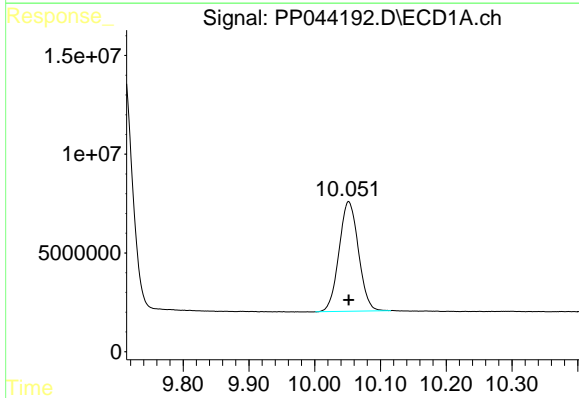


#1 Tetrachloro-m-xylene
 R.T.: 3.912 min
 Delta R.T.: 0.000 min
 Response: 103999130
 Conc: 50.00 ng/ml

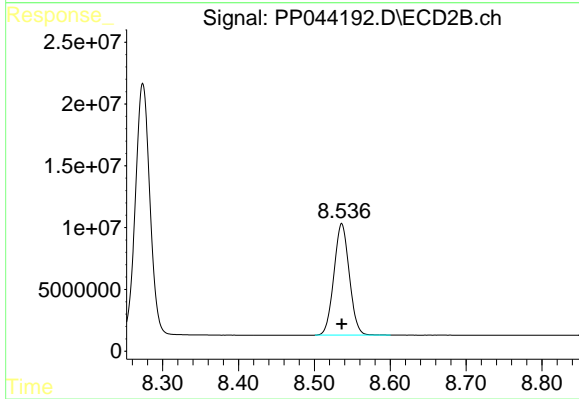
Instrument :
 ECD_P
 ClientSampleId :
 AR1268ICC500



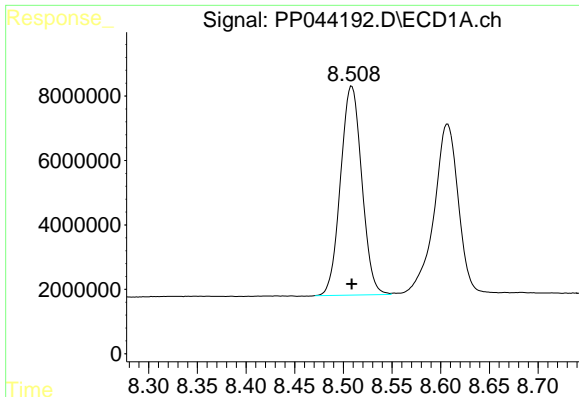
#1 Tetrachloro-m-xylene
 R.T.: 3.166 min
 Delta R.T.: 0.000 min
 Response: 88998315
 Conc: 50.00 ng/ml



#2 Decachlorobiphenyl
 R.T.: 10.052 min
 Delta R.T.: 0.000 min
 Response: 113883756
 Conc: 50.00 ng/ml



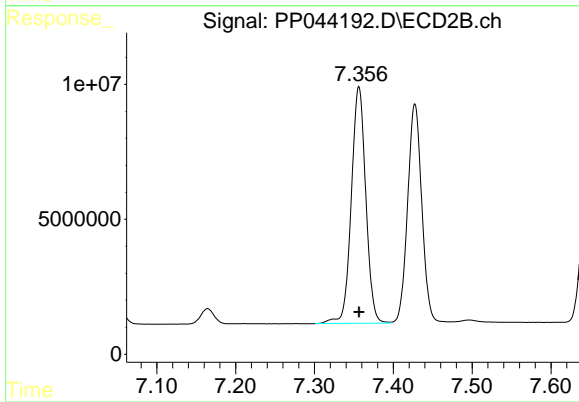
#2 Decachlorobiphenyl
 R.T.: 8.536 min
 Delta R.T.: 0.000 min
 Response: 126950528
 Conc: 50.00 ng/ml



#41 AR-1268-1

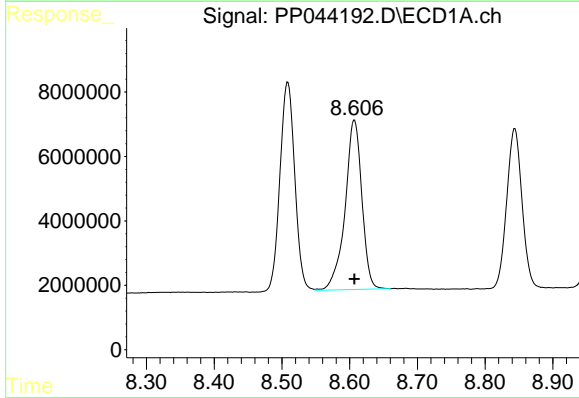
R.T.: 8.509 min
 Delta R.T.: 0.000 min
 Response: 98706307
 Conc: 500.00 ng/ml

Instrument :
 ECD_P
 ClientSampleId :
 AR1268ICC500



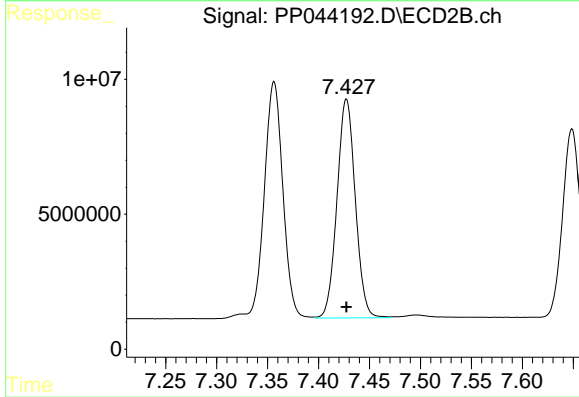
#41 AR-1268-1

R.T.: 7.356 min
 Delta R.T.: 0.000 min
 Response: 111887555
 Conc: 500.00 ng/ml



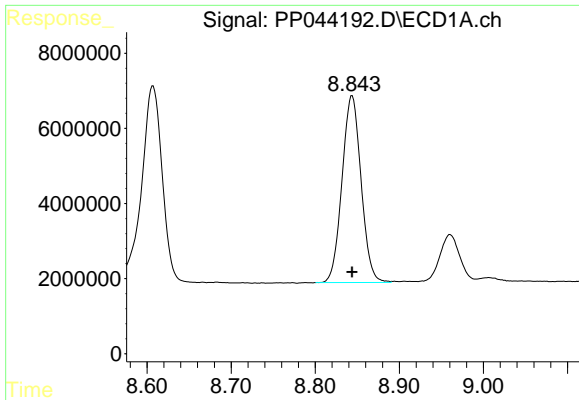
#42 AR-1268-2

R.T.: 8.607 min
 Delta R.T.: 0.000 min
 Response: 90850797
 Conc: 500.00 ng/ml



#42 AR-1268-2

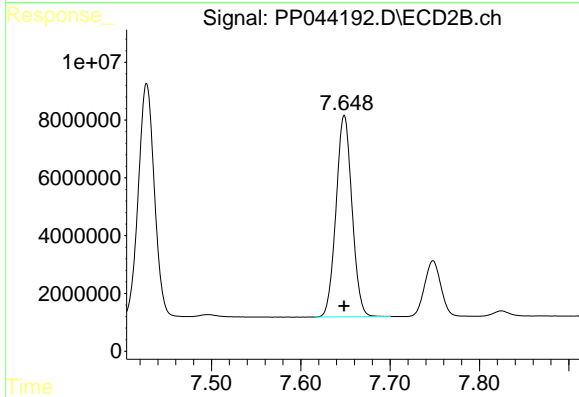
R.T.: 7.427 min
 Delta R.T.: 0.000 min
 Response: 101446239
 Conc: 500.00 ng/ml



#43 AR-1268-3

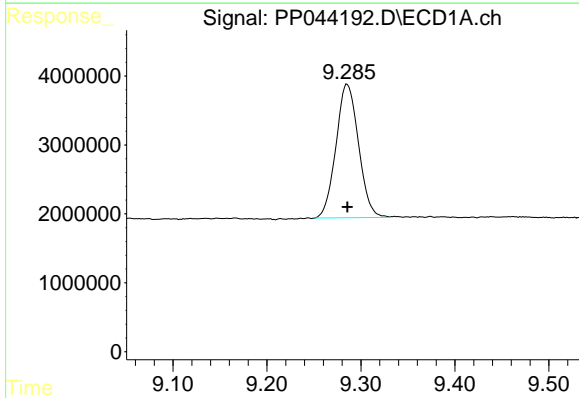
R.T.: 8.844 min
 Delta R.T.: 0.000 min
 Response: 78398416
 Conc: 500.00 ng/ml

Instrument :
 ECD_P
 ClientSampleId :
 AR1268ICC500



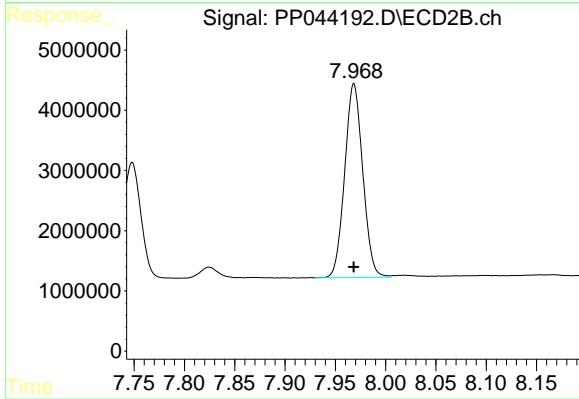
#43 AR-1268-3

R.T.: 7.649 min
 Delta R.T.: 0.000 min
 Response: 86577700
 Conc: 500.00 ng/ml



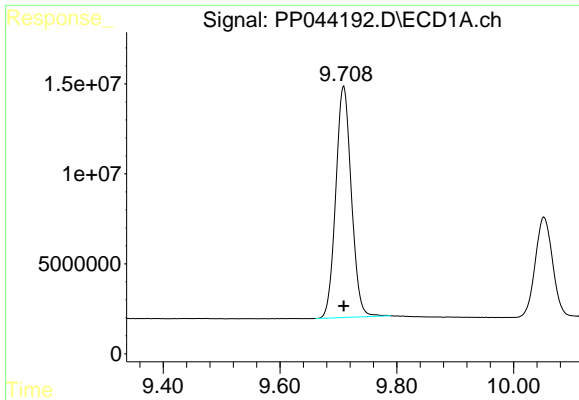
#44 AR-1268-4

R.T.: 9.285 min
 Delta R.T.: 0.000 min
 Response: 32307195
 Conc: 500.00 ng/ml



#44 AR-1268-4

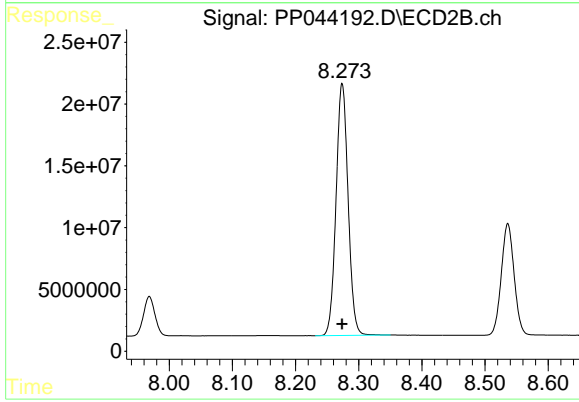
R.T.: 7.968 min
 Delta R.T.: 0.000 min
 Response: 40282052
 Conc: 500.00 ng/ml



#45 AR-1268-5

R.T.: 9.709 min
Delta R.T.: 0.000 min
Response: 238293511
Conc: 500.00 ng/ml

Instrument :
ECD_P
ClientSampleId :
AR1268ICC500



#45 AR-1268-5

R.T.: 8.274 min
Delta R.T.: 0.000 min
Response: 270119455
Conc: 500.00 ng/ml