

Data Path : Z:\pestpcbsrv\HPCHEM1\ECD_P\Data\PP030322\
 Data File : PP044212.D
 Signal(s) : Signal #1: ECD1A.ch Signal #2: ECD2B.ch
 Acq On : 03 Mar 2022 15:06
 Operator : YP\AJ
 Sample : N1731-02
 Misc :
 ALS Vial : 13 Sample Multiplier: 1

Instrument :
 ECD_P
 ClientSampleId :

Integration File signal 1: autoint1.e
 Integration File signal 2: autoint2.e
 Quant Time: Mar 04 01:00:57 2022
 Quant Method : Z:\pestpcbsrv\HPCHEM1\ECD_P\methods\PP030222.M
 Quant Title : GC EXTRACTABLES
 QLast Update : Thu Mar 03 02:21:53 2022
 Response via : Initial Calibration
 Integrator: ChemStation

Volume Inj. : 2 µl
 Signal #1 Phase : ZB-MR1 Signal #2 Phase: ZB-MR2
 Signal #1 Info : 30Mx0.32mmx 0.50µ Signal #2 Info : 30M x 0.32mm x 0.25µm

Compound	RT#1	RT#2	Resp#1	Resp#2	ng/ml	ng/ml
System Monitoring Compounds						
1) SA Tetrachlo...	3.911	3.166	33334248	33080034	16.088	18.909
2) SA Decachlor...	10.050	8.535	15509280	17632849	11.268	11.495
Target Compounds						
3) L1 AR-1016-1	5.184f	4.315	886870	470925	13.060	8.470 #
4) L1 AR-1016-2	5.184	4.332	886870	1306869	8.757	16.866 #
5) L1 AR-1016-3	5.270f	4.515	894639	1936071	14.263	45.133 #
6) L1 AR-1016-4	5.333f	4.575	4640171	144281	89.382	4.281 #
7) L1 AR-1016-5	5.677	4.793	3284905	727779	65.221	17.497 #
8) L2 AR-1221-1	4.130	3.406	6434445	7677066	260.402	334.418 #
9) L2 AR-1221-2	4.233	3.476	1455327	9619871	77.567	556.959 #
10) L2 AR-1221-3	4.326f	3.560	2357043	624469	42.124	12.558 #
11) L3 AR-1232-1	4.326	3.560	2357043	624469	51.363	15.027 #
12) L3 AR-1232-2	0.000	4.332	0	1306869	N.D.	37.840 #
13) L3 AR-1232-3	5.184	4.515	886870	1936071	20.496	103.772 #
14) L3 AR-1232-4	5.333f	4.622	4640171	3632048	231.107	220.271
15) L3 AR-1232-5	5.456	4.793	1736335	727779	114.446	40.203 #
16) L4 AR-1242-1	5.184f	4.315	886870	470925	16.293	10.269 #
17) L4 AR-1242-2	5.184	4.332	886870	1306869	11.137	20.680 #
18) L4 AR-1242-3	5.270	4.515	894639	1936071	18.945	54.204 #
19) L4 AR-1242-4	5.333f	4.622	4640171	3632048	119.889	104.985
20) L4 AR-1242-5	6.163	5.170	2581085	3202926	60.539	75.831 #
21) L5 AR-1248-1	5.184f	4.315	886870	470925	21.453	13.277 #
22) L5 AR-1248-2	5.456	4.575	1736335	144281	30.952	3.066 #
23) L5 AR-1248-3	5.677	4.622	3284905	3632048	48.096	73.697 #
24) L5 AR-1248-4	6.097f	4.793	8021517	727779	109.998	12.877 #
25) L5 AR-1248-5	6.163	5.197	2581085	2464463	35.142	43.937 #
26) L6 AR-1254-1	6.097	5.170	8021517	3202926	106.956	38.742 #
27) L6 AR-1254-2	6.333	5.323	4208127	2244704	37.451	31.203
28) L6 AR-1254-3	6.731	5.757	4264710	1701159	36.445	14.765 #
29) L6 AR-1254-4	7.043	6.008	1932738	1904276	24.039	25.295
30) L6 AR-1254-5	7.529f	6.458	7021139	8000980	80.661	73.417
31) L7 AR-1260-1	6.906	5.900	1068698	3477470	12.161	43.351 #
32) L7 AR-1260-2	7.184	6.104	6724182	2880921	70.000	29.247 #
33) L7 AR-1260-3	7.593	6.267	496320	2899918	7.650	31.266 #
34) L7 AR-1260-4	7.832	6.780	2252056	2092741	28.874	29.350
35) L7 AR-1260-5	8.182	7.048	1360342	5218618	9.706	31.605 #
36) L8 AR-1262-1	7.593	6.500	496320	2838709	4.911	27.354 #
37) L8 AR-1262-2	8.182	6.780	1360342	2092741	8.193	21.865 #
38) L8 AR-1262-3	0.000	7.358	0	1618191	N.D.	20.512 #
39) L8 AR-1262-4	8.612	7.423	648024	1375012	13.054	9.521 #
40) L8 AR-1262-5	0.000	7.968	0	821823	N.D.	11.479 #
41) L9 AR-1268-1	0.000	7.358	0	1618191	N.D.	7.115 #

Data Path : Z:\pestpcbsrv\HPCHEM1\ECD_P\Data\PP030322\
 Data File : PP044212.D
 Signal(s) : Signal #1: ECD1A.ch Signal #2: ECD2B.ch
 Acq On : 03 Mar 2022 15:06
 Operator : YP\AJ
 Sample : N1731-02
 Misc :
 ALS Vial : 13 Sample Multiplier: 1

Instrument :
 ECD_P
 ClientSampleId :

Integration File signal 1: autoint1.e
 Integration File signal 2: autoint2.e
 Quant Time: Mar 04 01:00:57 2022
 Quant Method : Z:\pestpcbsrv\HPCHEM1\ECD_P\methods\PP030222.M
 Quant Title : GC EXTRACTABLES
 QLast Update : Thu Mar 03 02:21:53 2022
 Response via : Initial Calibration
 Integrator: ChemStation

Volume Inj. : 2 µl
 Signal #1 Phase : ZB-MR1 Signal #2 Phase: ZB-MR2
 Signal #1 Info : 30Mx0.32mmx 0.50µ Signal #2 Info : 30M x 0.32mm x 0.25µm

	Compound	RT#1	RT#2	Resp#1	Resp#2	ng/ml	ng/ml
42)	L9 AR-1268-2	8.612	7.423	648024	1375012	3.558	6.712 #
43)	L9 AR-1268-3	8.820f	7.645	1212966	689834	7.859	3.947 #
44)	L9 AR-1268-4	0.000	7.968	0	821823	N.D.	10.127 #
45)	L9 AR-1268-5	9.706	8.272	484653	886186	1.032	1.644 #

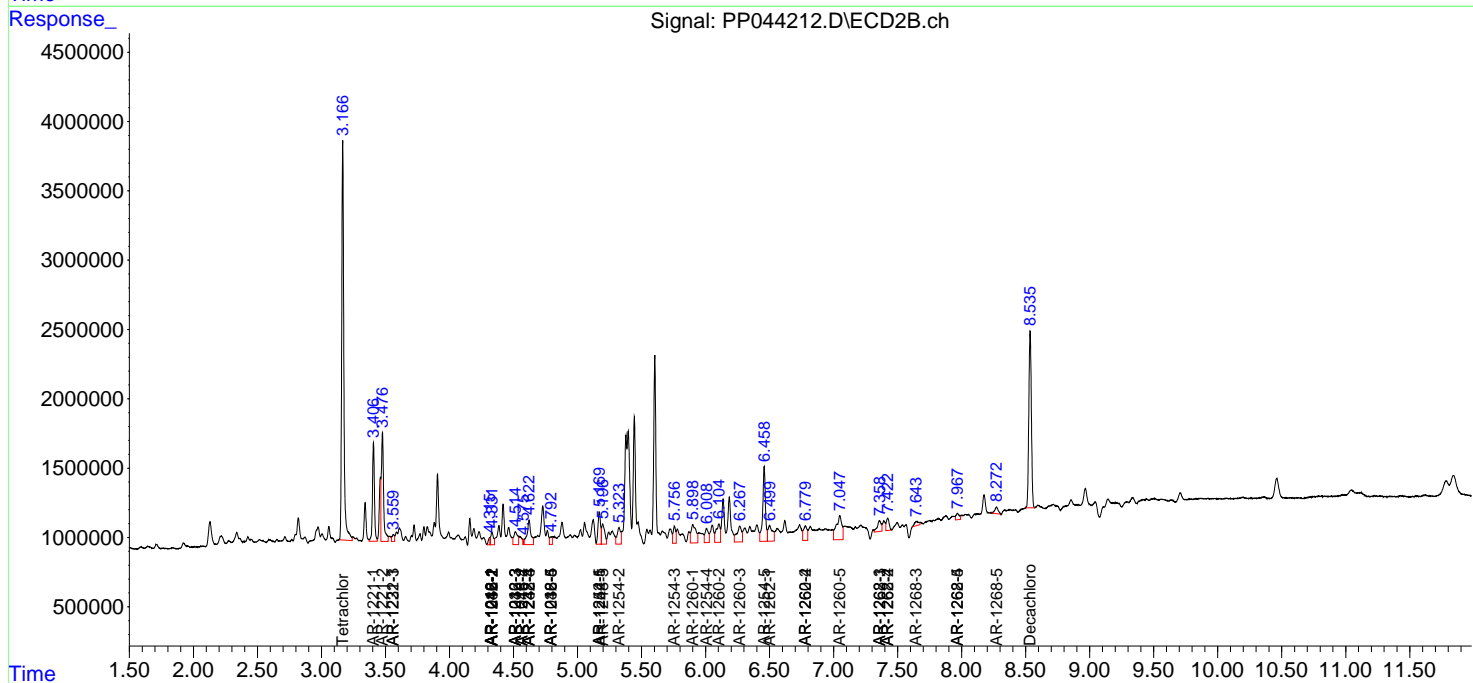
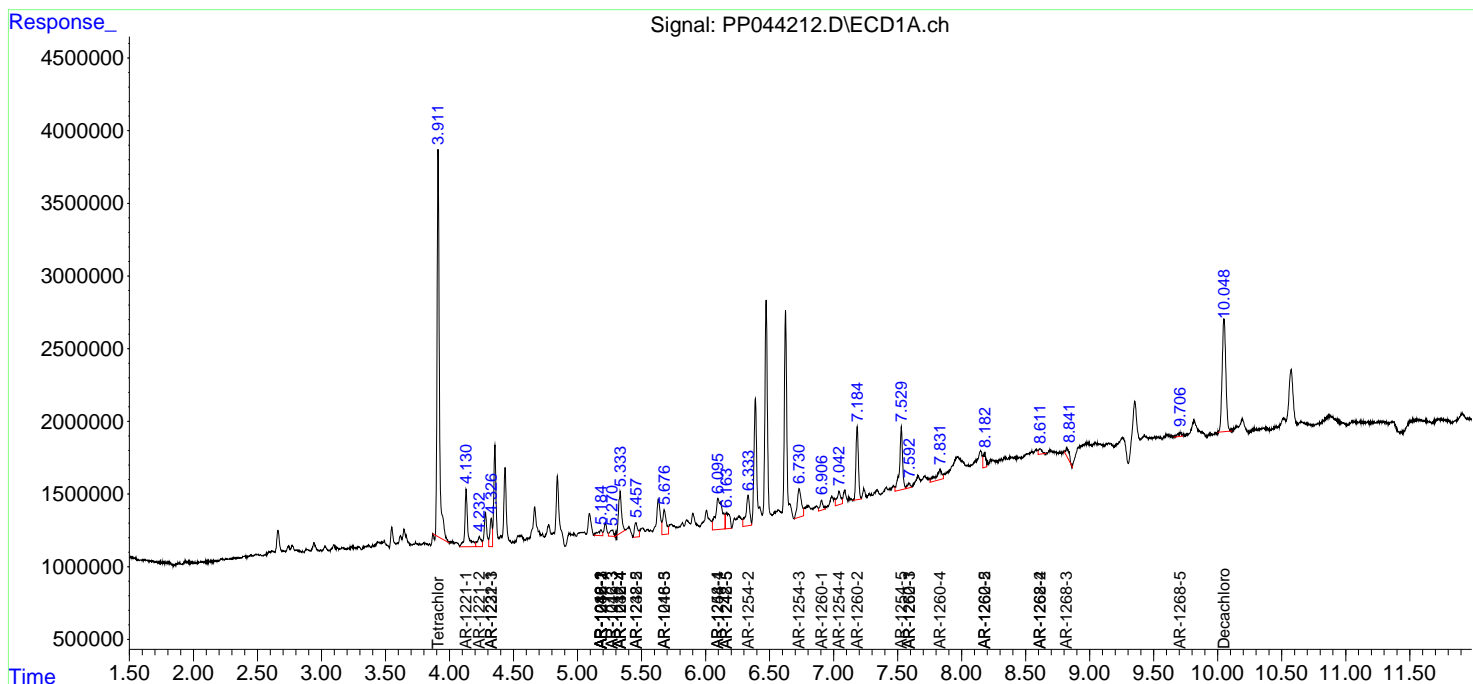
(f)=RT Delta > 1/2 Window (#)=Amounts differ by > 25% (m)=manual int.

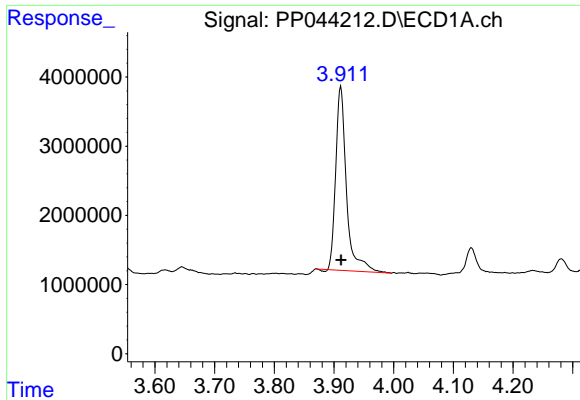
Data Path : Z:\pestpcbsrv\HPCHEM1\ECD_P\Data\PP030322\
 Data File : PP044212.D
 Signal(s) : Signal #1: ECD1A.ch Signal #2: ECD2B.ch
 Acq On : 03 Mar 2022 15:06
 Operator : YP\AJ
 Sample : N1731-02
 Misc :
 ALS Vial : 13 Sample Multiplier: 1

Instrument :
 ECD_P
 ClientSampleId :

Integration File signal 1: autoint1.e
 Integration File signal 2: autoint2.e
 Quant Time: Mar 04 01:00:57 2022
 Quant Method : Z:\pestpcbsrv\HPCHEM1\ECD_P\methods\PP030222.M
 Quant Title : GC EXTRACTABLES
 QLast Update : Thu Mar 03 02:21:53 2022
 Response via : Initial Calibration
 Integrator: ChemStation

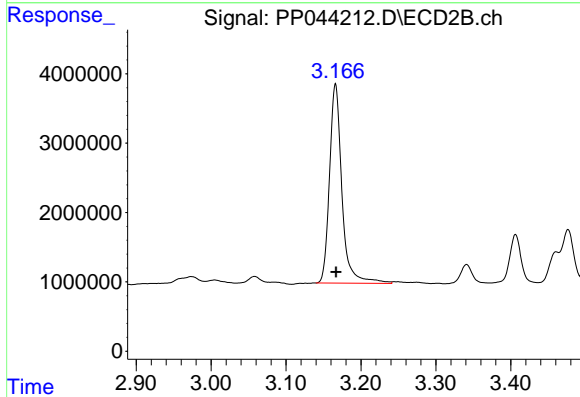
Volume Inj. : 2 µl
 Signal #1 Phase : ZB-MR1 Signal #2 Phase: ZB-MR2
 Signal #1 Info : 30Mx0.32mmx 0.50µ Signal #2 Info : 30M x 0.32mm x 0.25µm



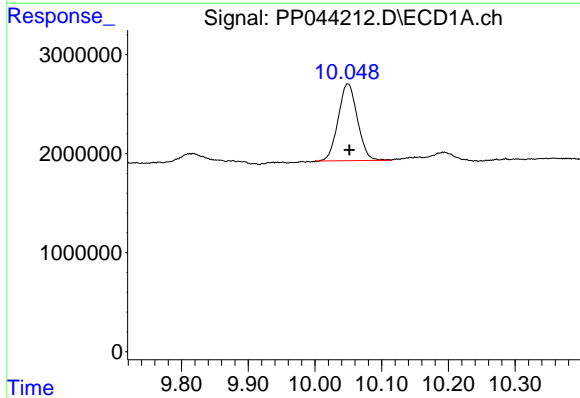


#1 Tetrachloro-m-xylene
 R.T.: 3.911 min
 Delta R.T.: 0.000 min
 Response: 33334248
 Conc: 16.09 ng/ml

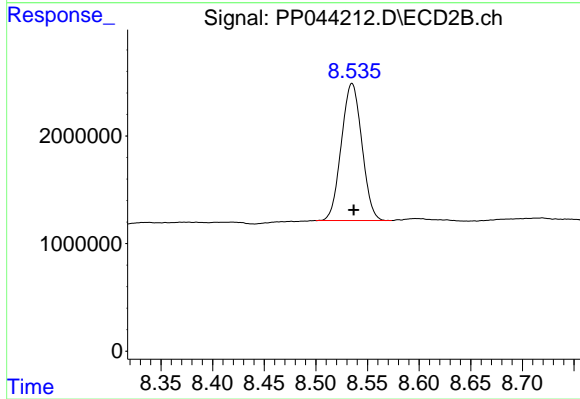
Instrument :
 ECD_P
 ClientSampleId :



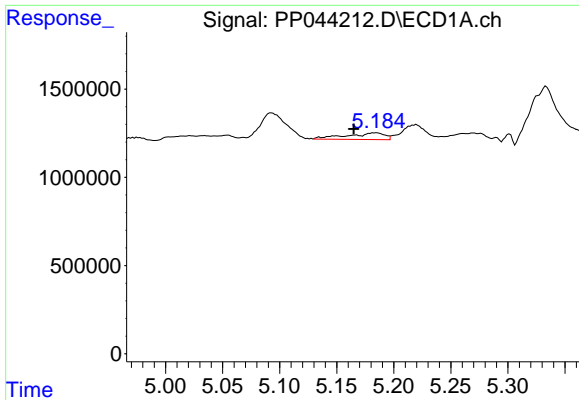
#1 Tetrachloro-m-xylene
 R.T.: 3.166 min
 Delta R.T.: 0.000 min
 Response: 33080034
 Conc: 18.91 ng/ml



#2 Decachlorobiphenyl
 R.T.: 10.050 min
 Delta R.T.: -0.002 min
 Response: 15509280
 Conc: 11.27 ng/ml



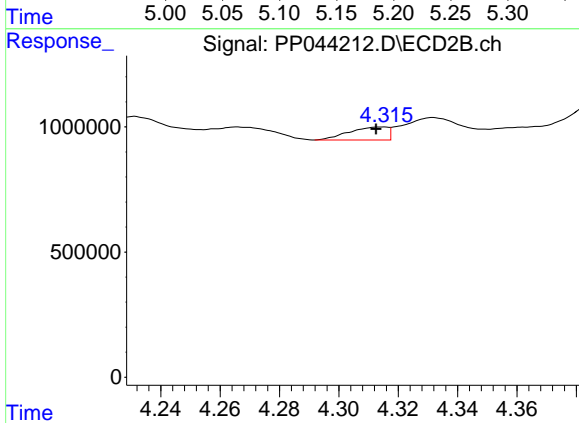
#2 Decachlorobiphenyl
 R.T.: 8.535 min
 Delta R.T.: -0.002 min
 Response: 17632849
 Conc: 11.49 ng/ml



#3 AR-1016-1

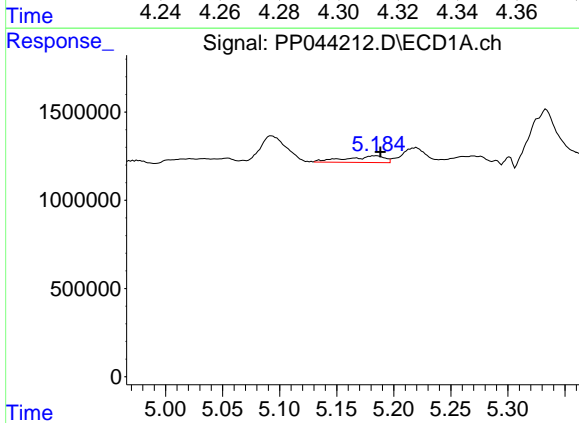
R.T.: 5.184 min
 Delta R.T.: 0.019 min
 Response: 886870
 Conc: 13.06 ng/ml

Instrument :
 ECD_P
 ClientSampleId :



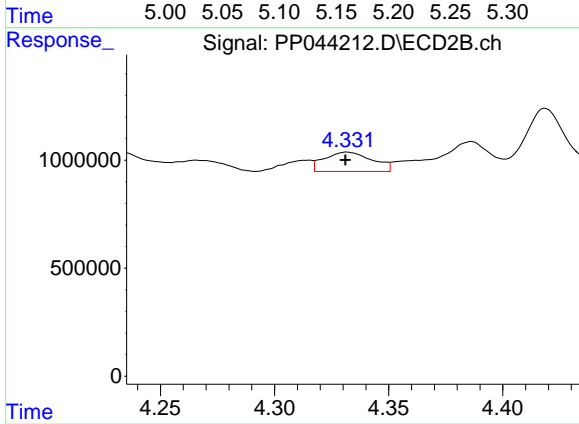
#3 AR-1016-1

R.T.: 4.315 min
 Delta R.T.: 0.003 min
 Response: 470925
 Conc: 8.47 ng/ml



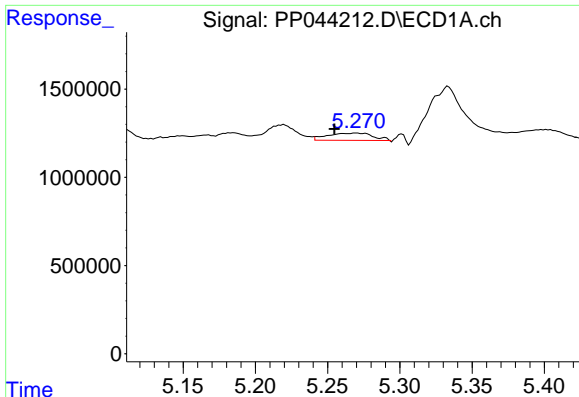
#4 AR-1016-2

R.T.: 5.184 min
 Delta R.T.: -0.004 min
 Response: 886870
 Conc: 8.76 ng/ml



#4 AR-1016-2

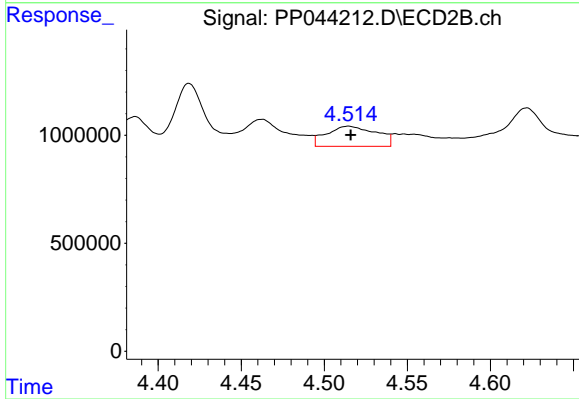
R.T.: 4.332 min
 Delta R.T.: 0.000 min
 Response: 1306869
 Conc: 16.87 ng/ml



#5 AR-1016-3

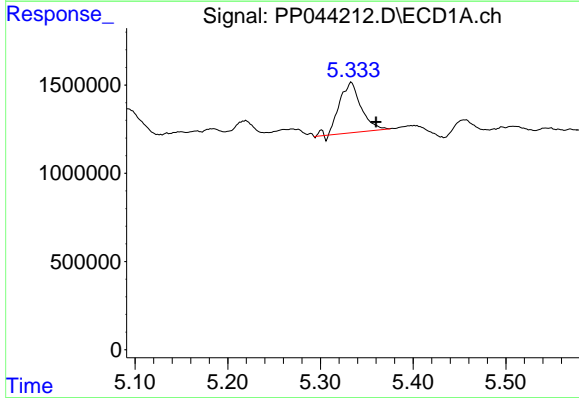
R.T.: 5.270 min
 Delta R.T.: 0.015 min
 Response: 894639
 Conc: 14.26 ng/ml

Instrument :
 ECD_P
 ClientSampleId :



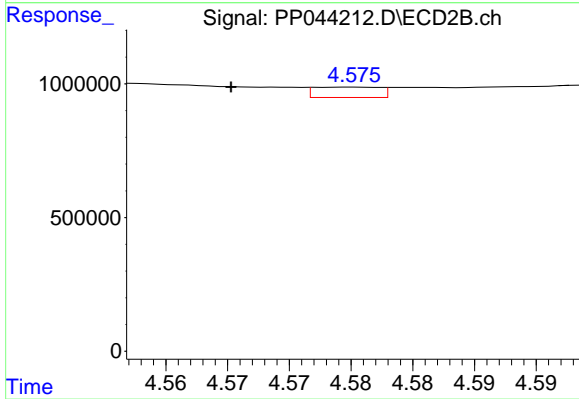
#5 AR-1016-3

R.T.: 4.515 min
 Delta R.T.: -0.001 min
 Response: 1936071
 Conc: 45.13 ng/ml



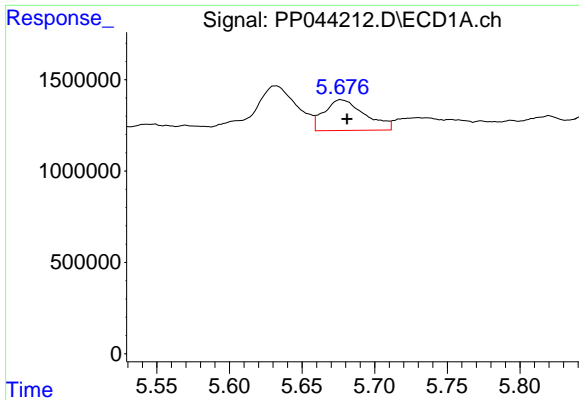
#6 AR-1016-4

R.T.: 5.333 min
 Delta R.T.: -0.027 min
 Response: 4640171
 Conc: 89.38 ng/ml



#6 AR-1016-4

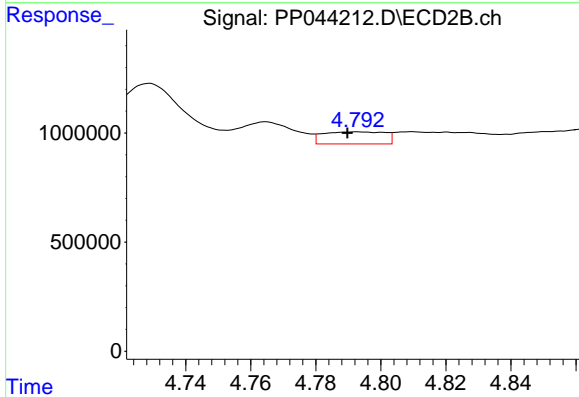
R.T.: 4.575 min
 Delta R.T.: 0.010 min
 Response: 144281
 Conc: 4.28 ng/ml



#7 AR-1016-5

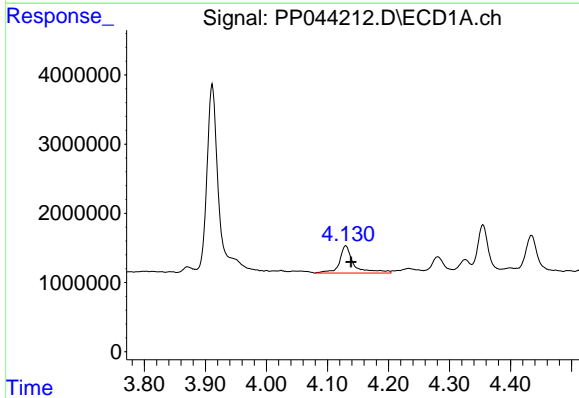
R.T.: 5.677 min
 Delta R.T.: -0.004 min
 Response: 3284905
 Conc: 65.22 ng/ml

Instrument :
 ECD_P
 ClientSampleId :



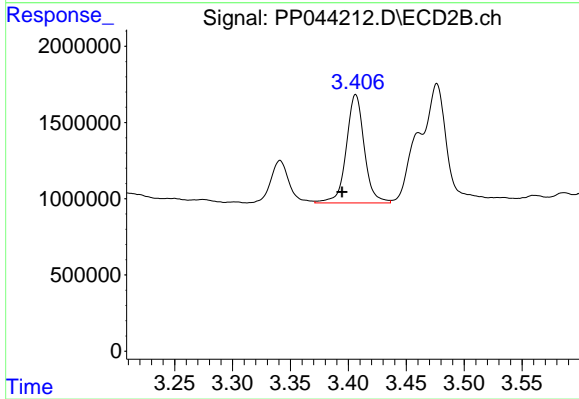
#7 AR-1016-5

R.T.: 4.793 min
 Delta R.T.: 0.003 min
 Response: 727779
 Conc: 17.50 ng/ml



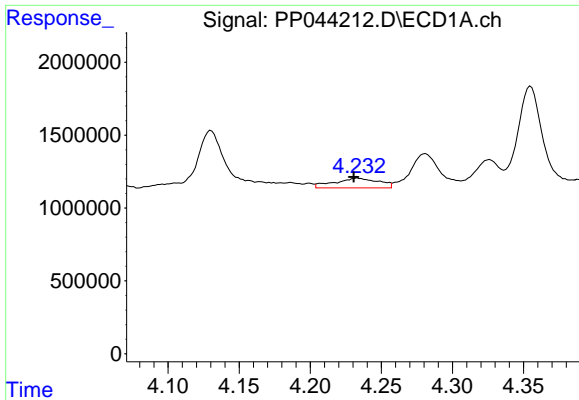
#8 AR-1221-1

R.T.: 4.130 min
 Delta R.T.: -0.008 min
 Response: 6434445
 Conc: 260.40 ng/ml



#8 AR-1221-1

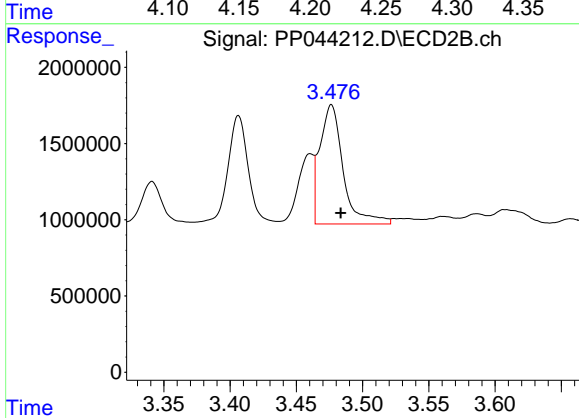
R.T.: 3.406 min
 Delta R.T.: 0.012 min
 Response: 7677066
 Conc: 334.42 ng/ml



#9 AR-1221-2

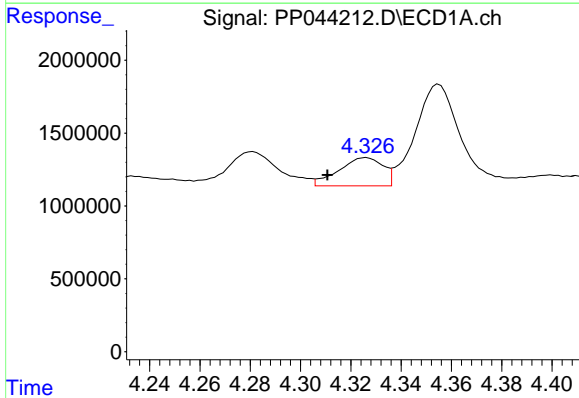
R.T.: 4.233 min
 Delta R.T.: 0.003 min
 Response: 1455327
 Conc: 77.57 ng/ml

Instrument :
 ECD_P
 ClientSampleId :



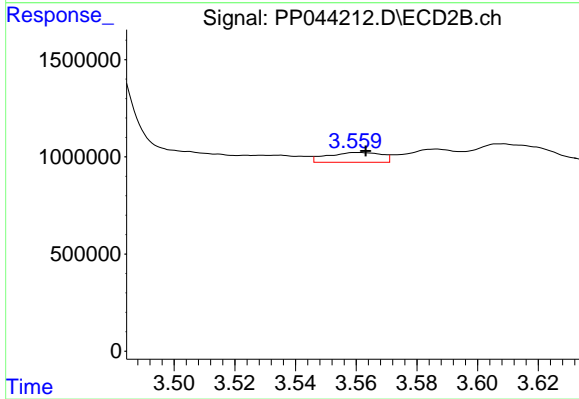
#9 AR-1221-2

R.T.: 3.476 min
 Delta R.T.: -0.007 min
 Response: 9619871
 Conc: 556.96 ng/ml



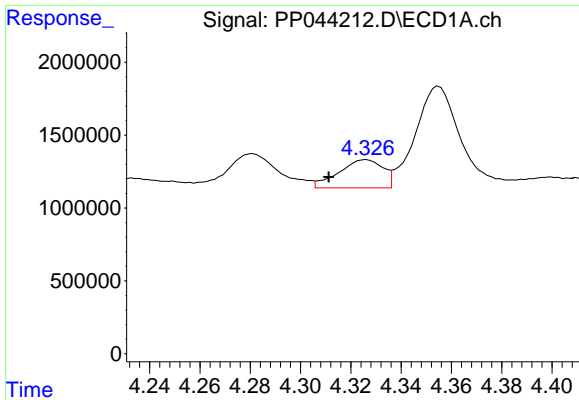
#10 AR-1221-3

R.T.: 4.326 min
 Delta R.T.: 0.015 min
 Response: 2357043
 Conc: 42.12 ng/ml



#10 AR-1221-3

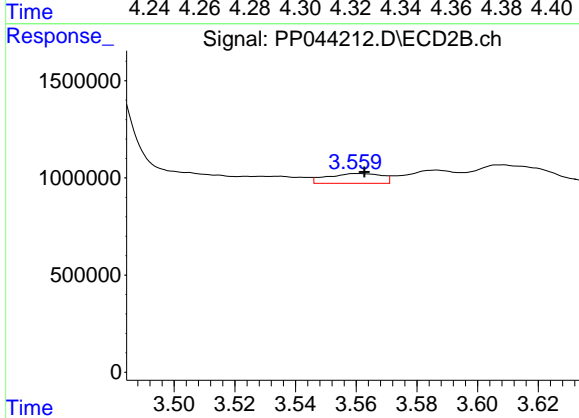
R.T.: 3.560 min
 Delta R.T.: -0.003 min
 Response: 624469
 Conc: 12.56 ng/ml



#11 AR-1232-1

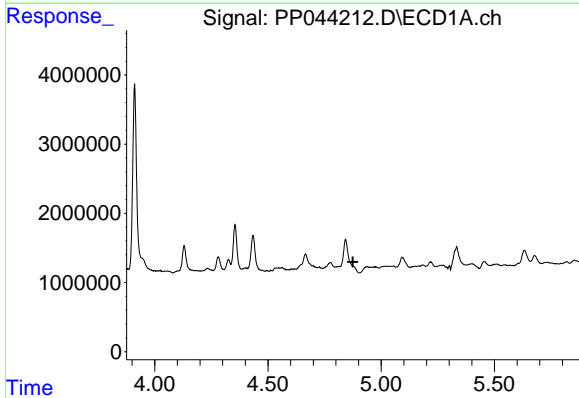
R.T.: 4.326 min
 Delta R.T.: 0.015 min
 Response: 2357043
 Conc: 51.36 ng/ml

Instrument :
 ECD_P
 ClientSampleId :



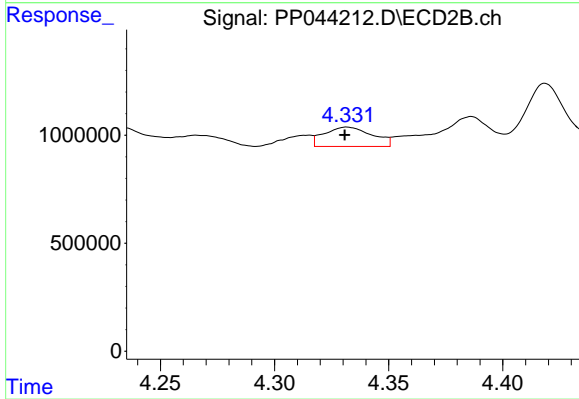
#11 AR-1232-1

R.T.: 3.560 min
 Delta R.T.: -0.002 min
 Response: 624469
 Conc: 15.03 ng/ml



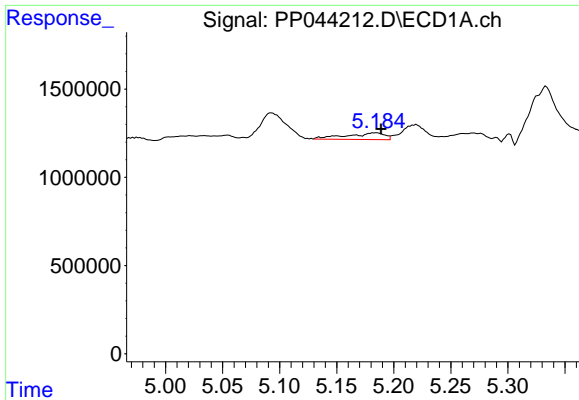
#12 AR-1232-2

R.T.: 0.000 min
 Exp R.T. : 4.875 min
 Response: 0
 Conc: N.D.



#12 AR-1232-2

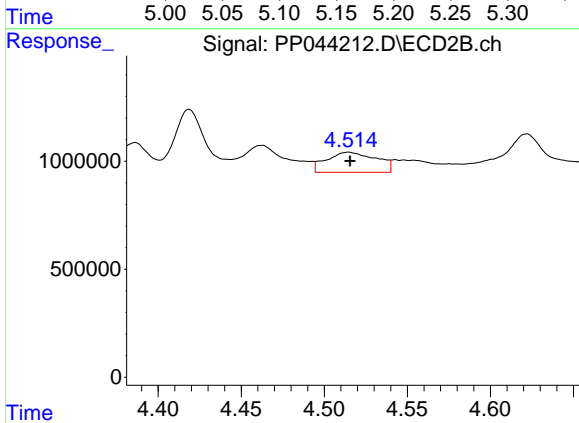
R.T.: 4.332 min
 Delta R.T.: 0.000 min
 Response: 1306869
 Conc: 37.84 ng/ml



#13 AR-1232-3

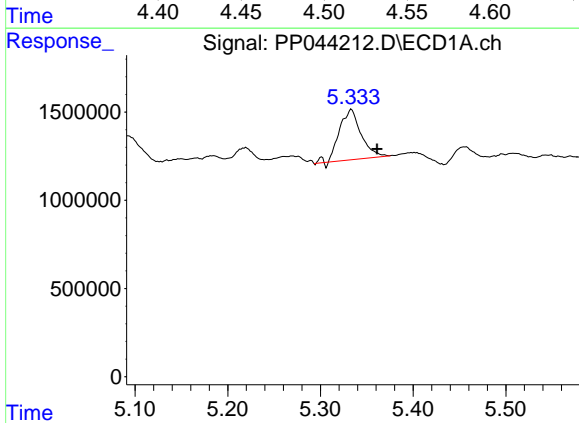
R.T.: 5.184 min
 Delta R.T.: -0.005 min
 Response: 886870
 Conc: 20.50 ng/ml

Instrument :
 ECD_P
 ClientSampleId :



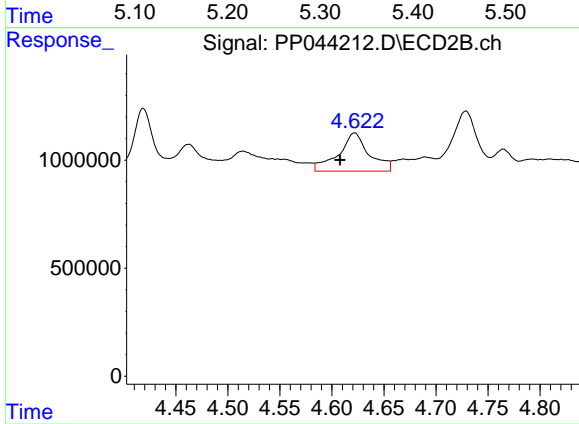
#13 AR-1232-3

R.T.: 4.515 min
 Delta R.T.: 0.000 min
 Response: 1936071
 Conc: 103.77 ng/ml



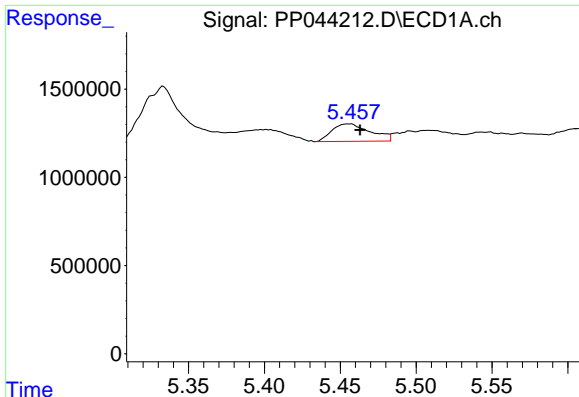
#14 AR-1232-4

R.T.: 5.333 min
 Delta R.T.: -0.028 min
 Response: 4640171
 Conc: 231.11 ng/ml



#14 AR-1232-4

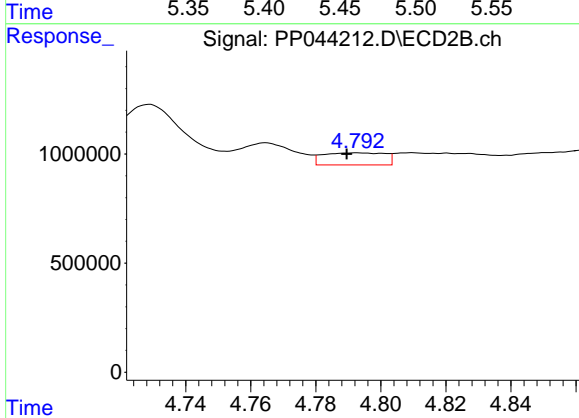
R.T.: 4.622 min
 Delta R.T.: 0.014 min
 Response: 3632048
 Conc: 220.27 ng/ml



#15 AR-1232-5

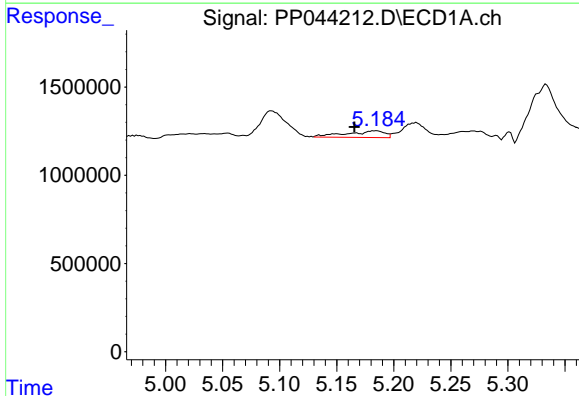
R.T.: 5.456 min
 Delta R.T.: -0.008 min
 Response: 1736335
 Conc: 114.45 ng/ml

Instrument :
 ECD_P
 ClientSampleId :



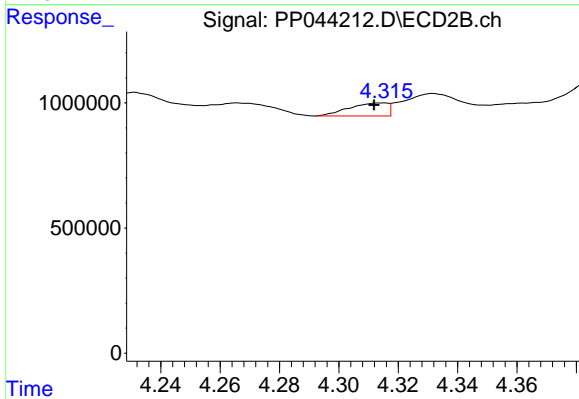
#15 AR-1232-5

R.T.: 4.793 min
 Delta R.T.: 0.003 min
 Response: 727779
 Conc: 40.20 ng/ml



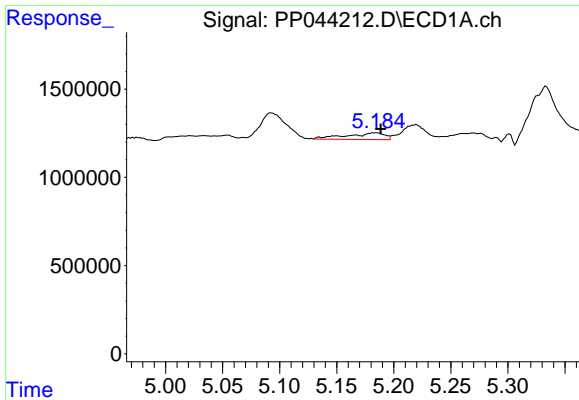
#16 AR-1242-1

R.T.: 5.184 min
 Delta R.T.: 0.018 min
 Response: 886870
 Conc: 16.29 ng/ml



#16 AR-1242-1

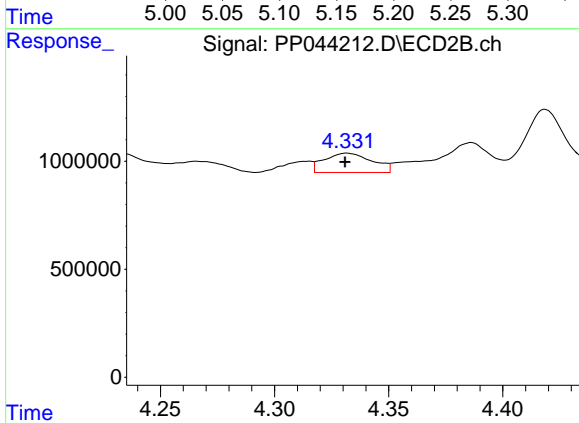
R.T.: 4.315 min
 Delta R.T.: 0.003 min
 Response: 470925
 Conc: 10.27 ng/ml



#17 AR-1242-2

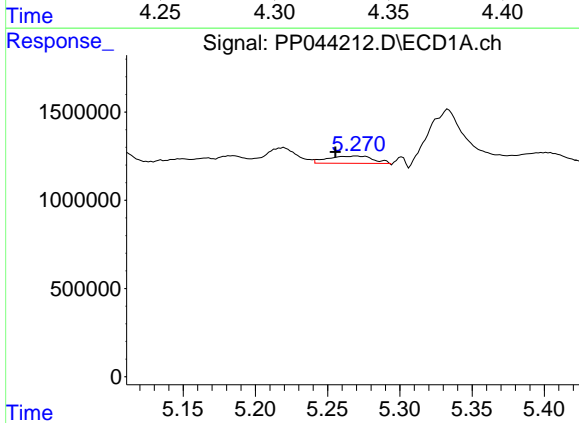
R.T.: 5.184 min
 Delta R.T.: -0.005 min
 Response: 886870
 Conc: 11.14 ng/ml

Instrument :
 ECD_P
 ClientSampleId :



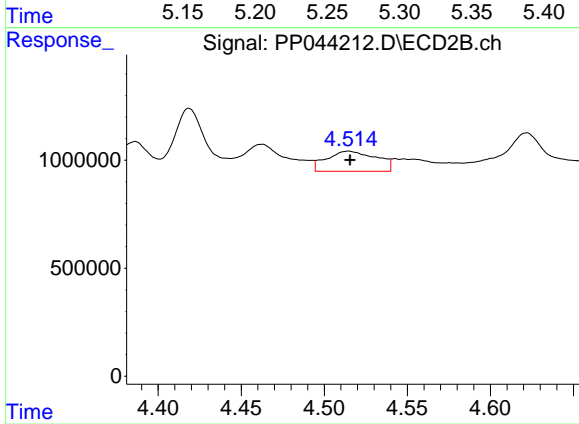
#17 AR-1242-2

R.T.: 4.332 min
 Delta R.T.: 0.000 min
 Response: 1306869
 Conc: 20.68 ng/ml



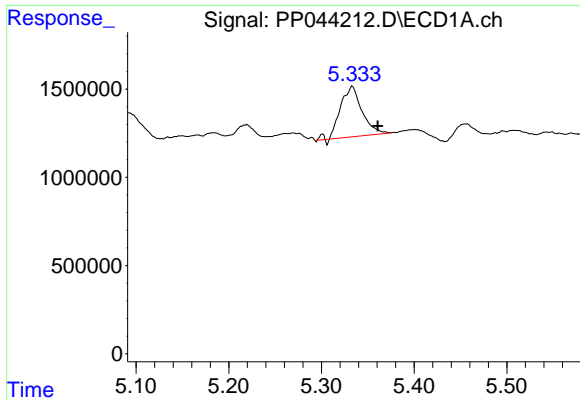
#18 AR-1242-3

R.T.: 5.270 min
 Delta R.T.: 0.015 min
 Response: 894639
 Conc: 18.94 ng/ml



#18 AR-1242-3

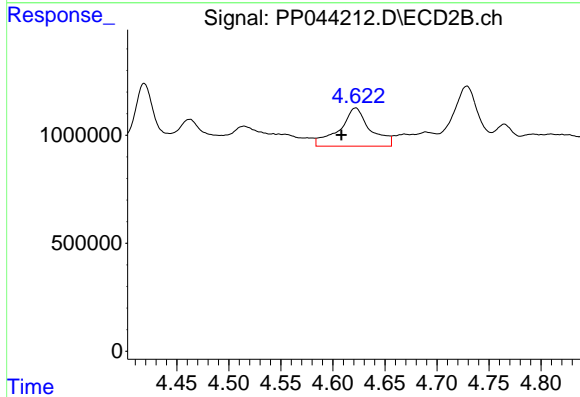
R.T.: 4.515 min
 Delta R.T.: 0.000 min
 Response: 1936071
 Conc: 54.20 ng/ml



#19 AR-1242-4

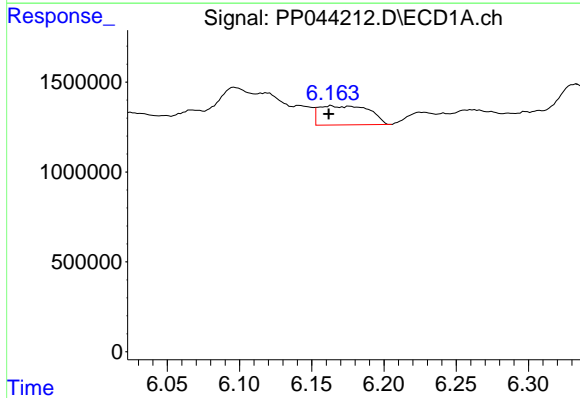
R.T.: 5.333 min
 Delta R.T.: -0.027 min
 Response: 4640171
 Conc: 119.89 ng/ml

Instrument :
 ECD_P
 ClientSampleId :



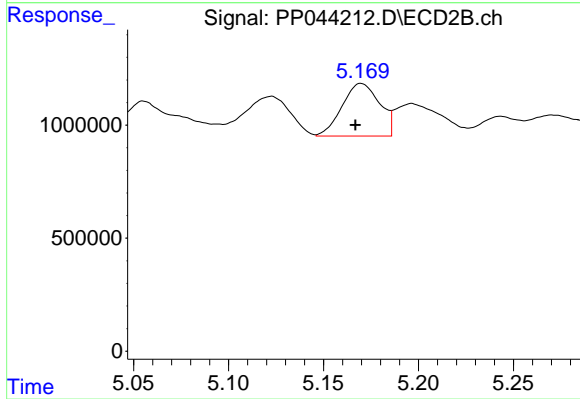
#19 AR-1242-4

R.T.: 4.622 min
 Delta R.T.: 0.014 min
 Response: 3632048
 Conc: 104.98 ng/ml



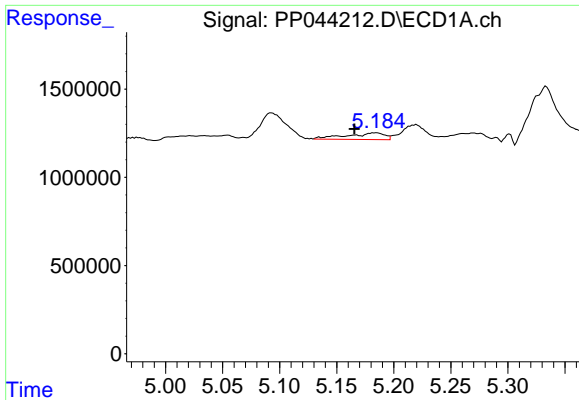
#20 AR-1242-5

R.T.: 6.163 min
 Delta R.T.: 0.002 min
 Response: 2581085
 Conc: 60.54 ng/ml



#20 AR-1242-5

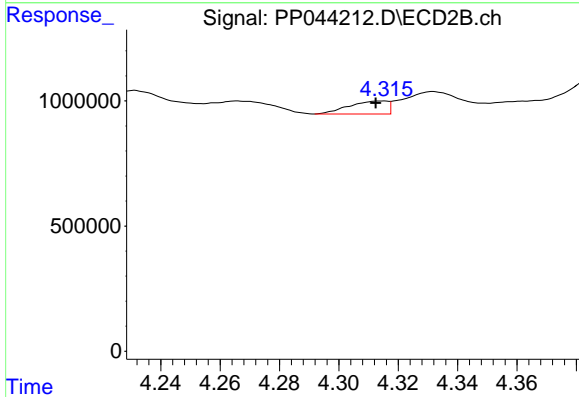
R.T.: 5.170 min
 Delta R.T.: 0.003 min
 Response: 3202926
 Conc: 75.83 ng/ml



#21 AR-1248-1

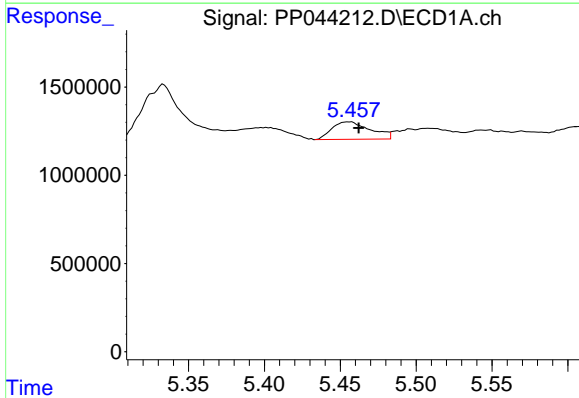
R.T.: 5.184 min
 Delta R.T.: 0.019 min
 Response: 886870
 Conc: 21.45 ng/ml

Instrument :
 ECD_P
 ClientSampleId :



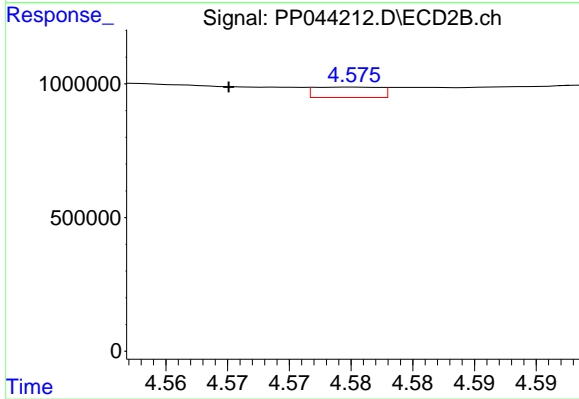
#21 AR-1248-1

R.T.: 4.315 min
 Delta R.T.: 0.003 min
 Response: 470925
 Conc: 13.28 ng/ml



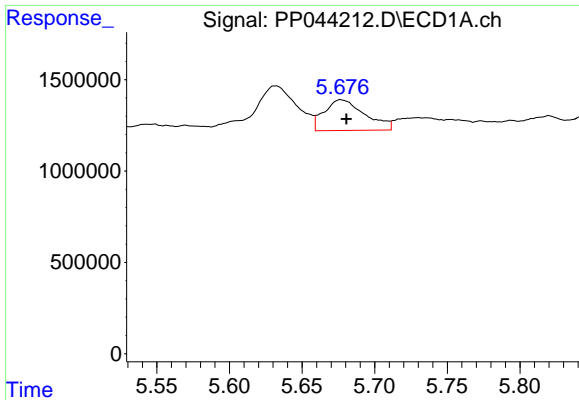
#22 AR-1248-2

R.T.: 5.456 min
 Delta R.T.: -0.007 min
 Response: 1736335
 Conc: 30.95 ng/ml



#22 AR-1248-2

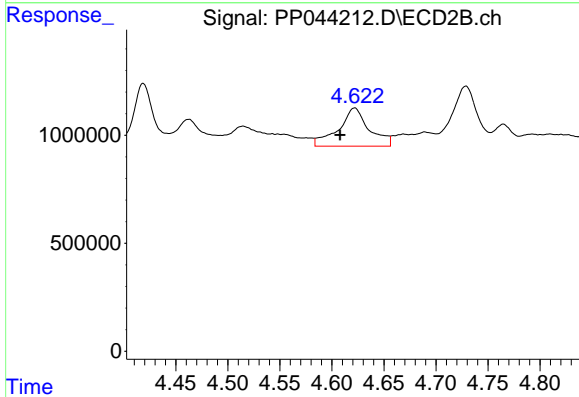
R.T.: 4.575 min
 Delta R.T.: 0.010 min
 Response: 144281
 Conc: 3.07 ng/ml



#23 AR-1248-3

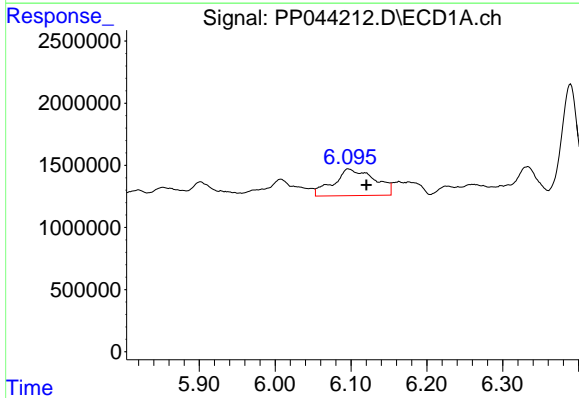
R.T.: 5.677 min
 Delta R.T.: -0.003 min
 Response: 3284905
 Conc: 48.10 ng/ml

Instrument :
 ECD_P
 ClientSampleId :



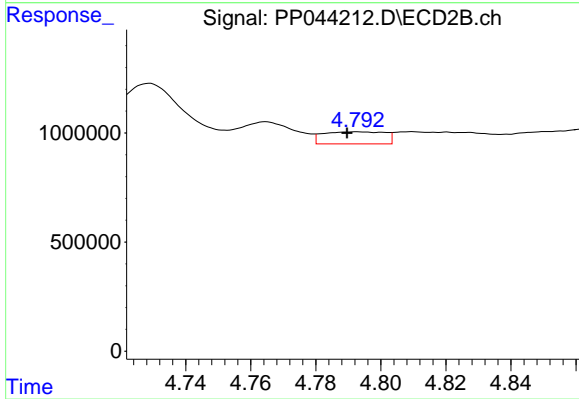
#23 AR-1248-3

R.T.: 4.622 min
 Delta R.T.: 0.014 min
 Response: 3632048
 Conc: 73.70 ng/ml



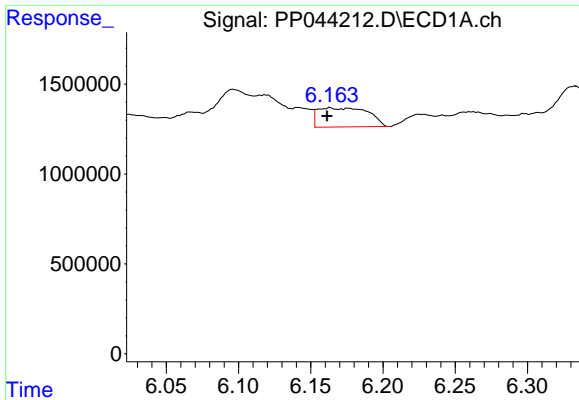
#24 AR-1248-4

R.T.: 6.097 min
 Delta R.T.: -0.023 min
 Response: 8021517
 Conc: 110.00 ng/ml



#24 AR-1248-4

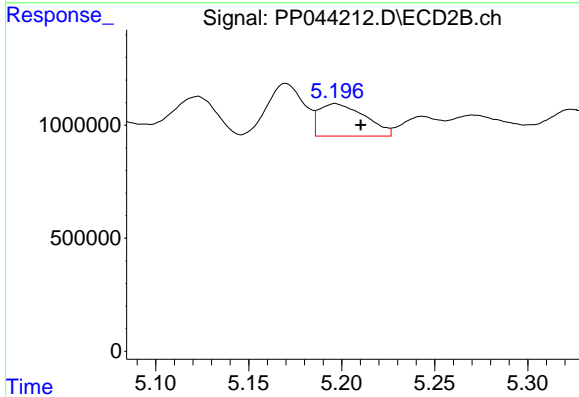
R.T.: 4.793 min
 Delta R.T.: 0.003 min
 Response: 727779
 Conc: 12.88 ng/ml



#25 AR-1248-5

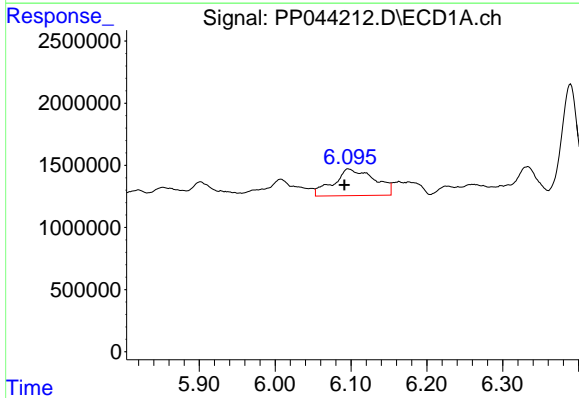
R.T.: 6.163 min
 Delta R.T.: 0.002 min
 Response: 2581085
 Conc: 35.14 ng/ml

Instrument :
 ECD_P
 ClientSampleId :



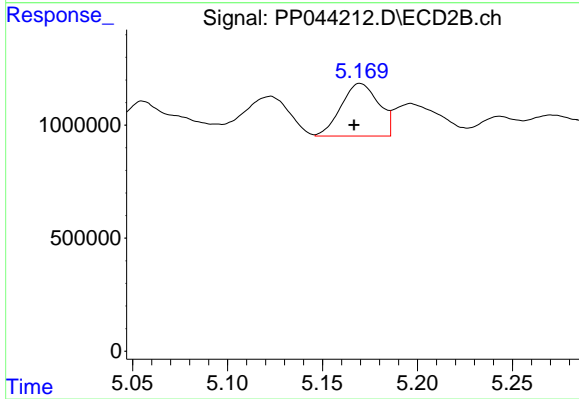
#25 AR-1248-5

R.T.: 5.197 min
 Delta R.T.: -0.014 min
 Response: 2464463
 Conc: 43.94 ng/ml



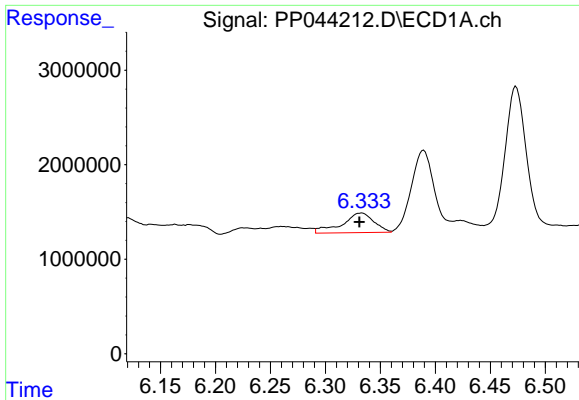
#26 AR-1254-1

R.T.: 6.097 min
 Delta R.T.: 0.006 min
 Response: 8021517
 Conc: 106.96 ng/ml



#26 AR-1254-1

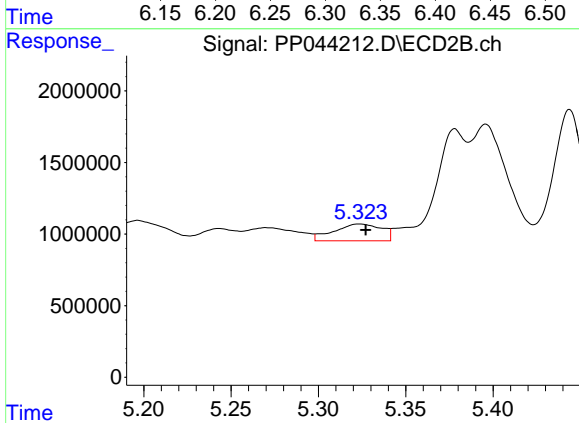
R.T.: 5.170 min
 Delta R.T.: 0.003 min
 Response: 3202926
 Conc: 38.74 ng/ml



#27 AR-1254-2

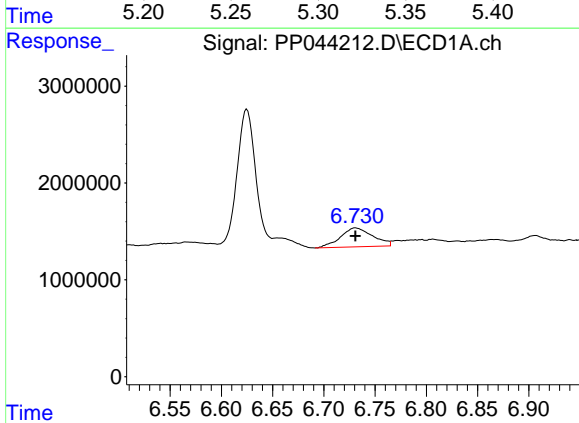
R.T.: 6.333 min
 Delta R.T.: 0.002 min
 Response: 4208127
 Conc: 37.45 ng/ml

Instrument :
 ECD_P
 ClientSampleId :



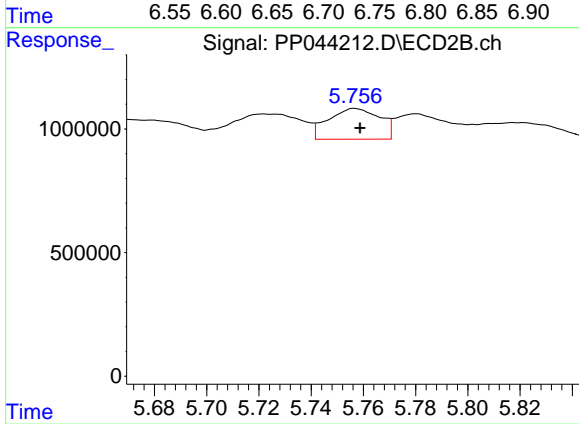
#27 AR-1254-2

R.T.: 5.323 min
 Delta R.T.: -0.004 min
 Response: 2244704
 Conc: 31.20 ng/ml



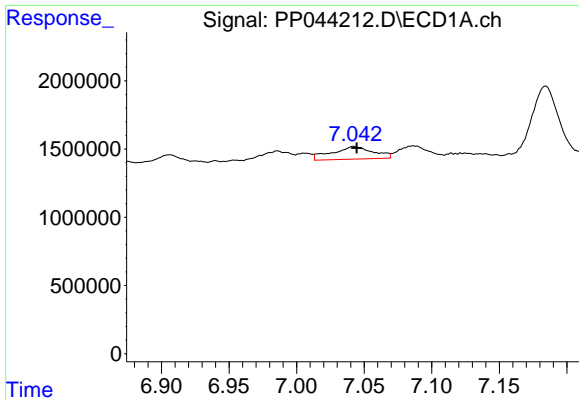
#28 AR-1254-3

R.T.: 6.731 min
 Delta R.T.: 0.000 min
 Response: 4264710
 Conc: 36.45 ng/ml



#28 AR-1254-3

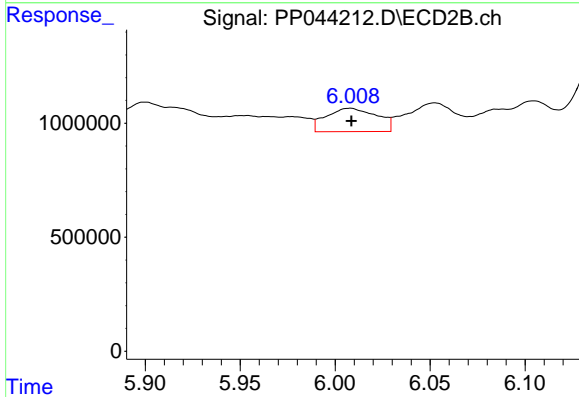
R.T.: 5.757 min
 Delta R.T.: -0.002 min
 Response: 1701159
 Conc: 14.77 ng/ml



#29 AR-1254-4

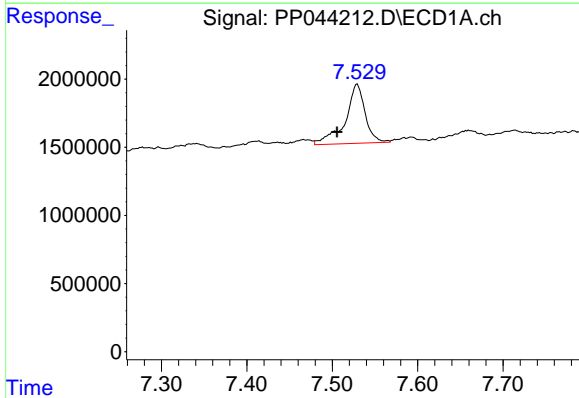
R.T.: 7.043 min
 Delta R.T.: -0.002 min
 Response: 1932738
 Conc: 24.04 ng/ml

Instrument :
 ECD_P
 ClientSampleId :



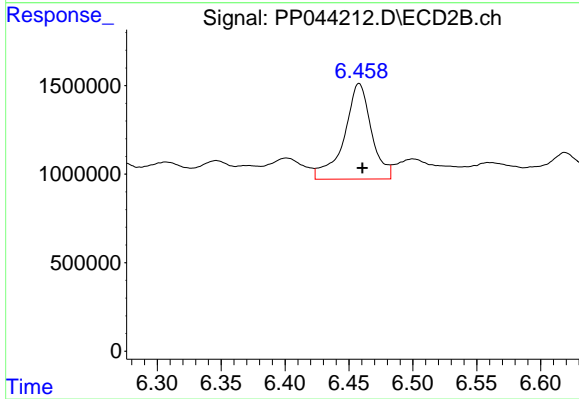
#29 AR-1254-4

R.T.: 6.008 min
 Delta R.T.: 0.000 min
 Response: 1904276
 Conc: 25.29 ng/ml



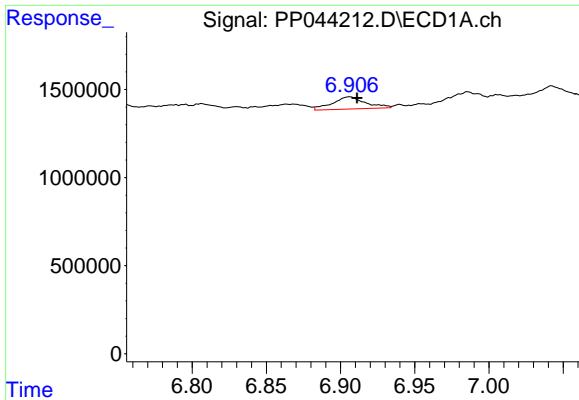
#30 AR-1254-5

R.T.: 7.529 min
 Delta R.T.: 0.023 min
 Response: 7021139
 Conc: 80.66 ng/ml



#30 AR-1254-5

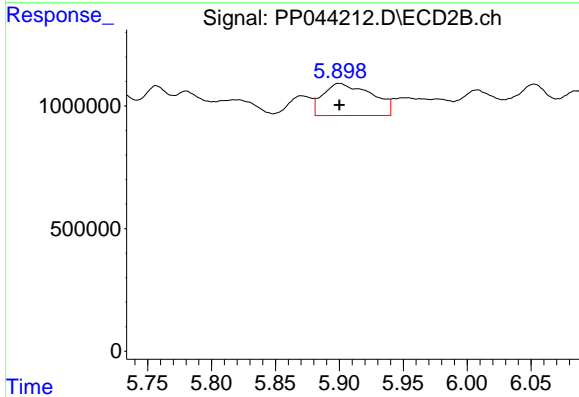
R.T.: 6.458 min
 Delta R.T.: -0.003 min
 Response: 8000980
 Conc: 73.42 ng/ml



#31 AR-1260-1

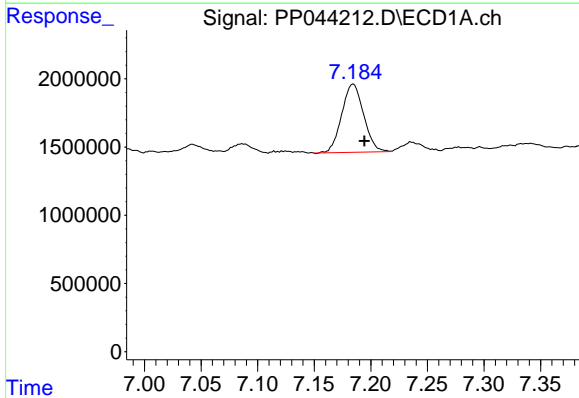
R.T.: 6.906 min
 Delta R.T.: -0.005 min
 Response: 1068698
 Conc: 12.16 ng/ml

Instrument :
 ECD_P
 ClientSampleId :



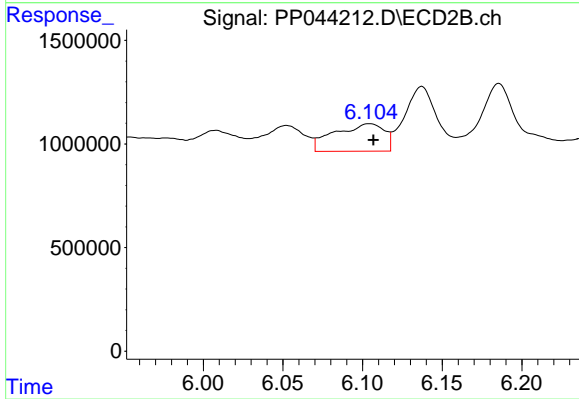
#31 AR-1260-1

R.T.: 5.900 min
 Delta R.T.: 0.000 min
 Response: 3477470
 Conc: 43.35 ng/ml



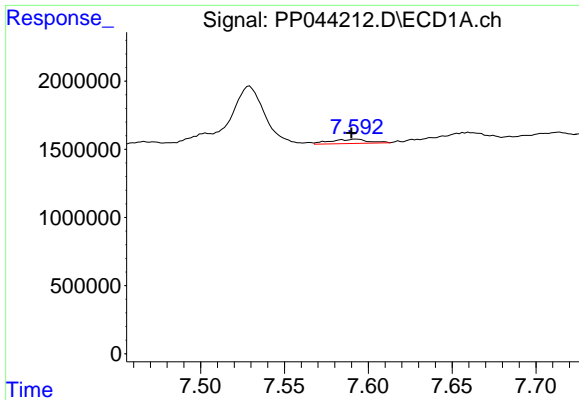
#32 AR-1260-2

R.T.: 7.184 min
 Delta R.T.: -0.010 min
 Response: 6724182
 Conc: 70.00 ng/ml



#32 AR-1260-2

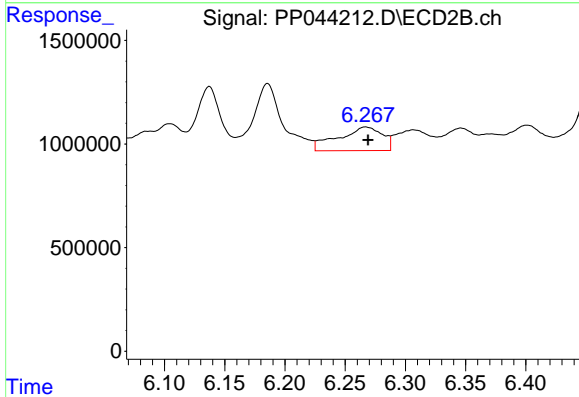
R.T.: 6.104 min
 Delta R.T.: -0.002 min
 Response: 2880921
 Conc: 29.25 ng/ml



#33 AR-1260-3

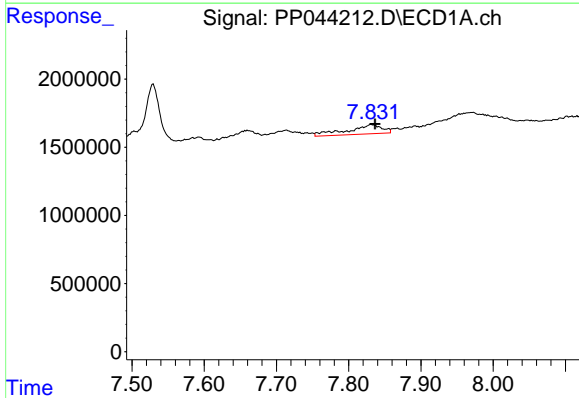
R.T.: 7.593 min
 Delta R.T.: 0.003 min
 Response: 496320
 Conc: 7.65 ng/ml

Instrument :
 ECD_P
 ClientSampleId :



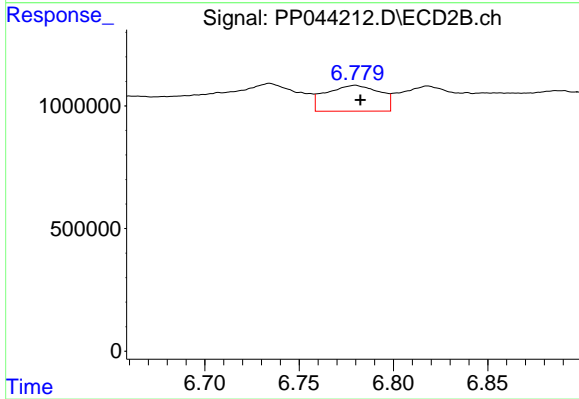
#33 AR-1260-3

R.T.: 6.267 min
 Delta R.T.: -0.002 min
 Response: 2899918
 Conc: 31.27 ng/ml



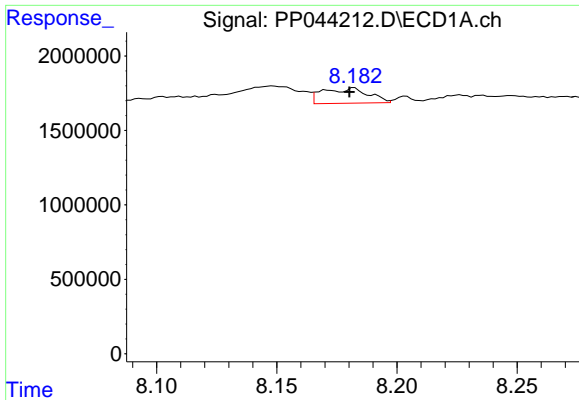
#34 AR-1260-4

R.T.: 7.832 min
 Delta R.T.: -0.005 min
 Response: 2252056
 Conc: 28.87 ng/ml



#34 AR-1260-4

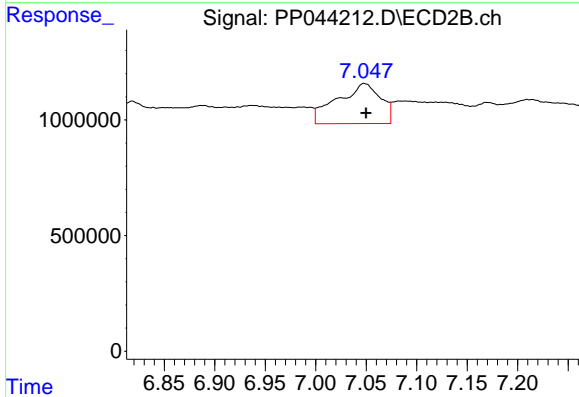
R.T.: 6.780 min
 Delta R.T.: -0.003 min
 Response: 2092741
 Conc: 29.35 ng/ml



#35 AR-1260-5

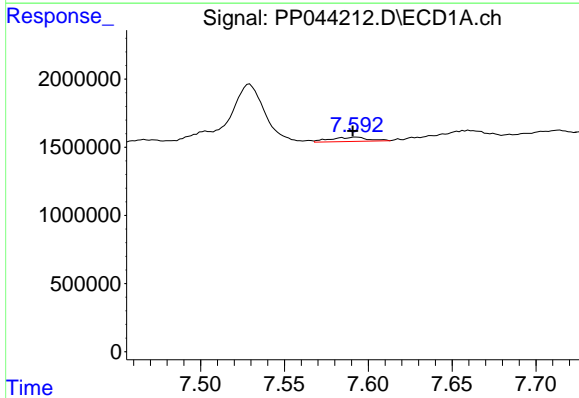
R.T.: 8.182 min
 Delta R.T.: 0.002 min
 Response: 1360342
 Conc: 9.71 ng/ml

Instrument :
 ECD_P
 ClientSampleId :



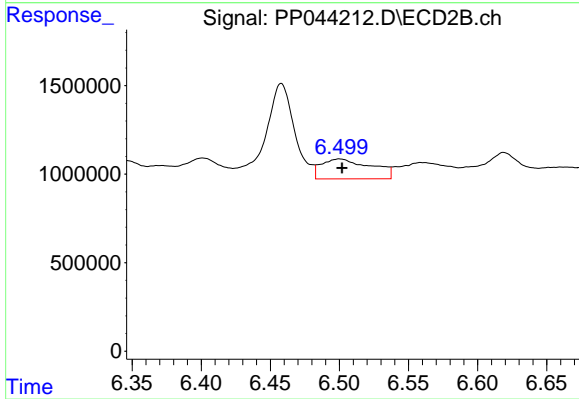
#35 AR-1260-5

R.T.: 7.048 min
 Delta R.T.: -0.002 min
 Response: 5218618
 Conc: 31.61 ng/ml



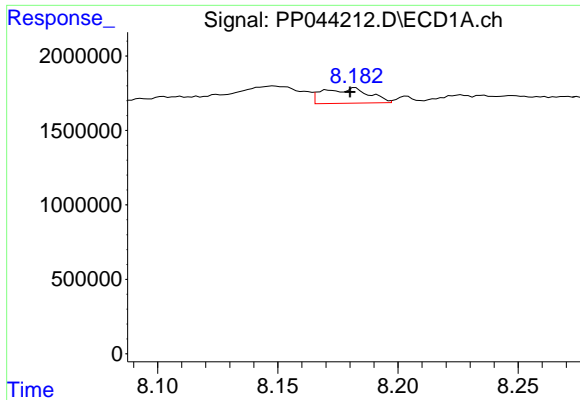
#36 AR-1262-1

R.T.: 7.593 min
 Delta R.T.: 0.002 min
 Response: 496320
 Conc: 4.91 ng/ml



#36 AR-1262-1

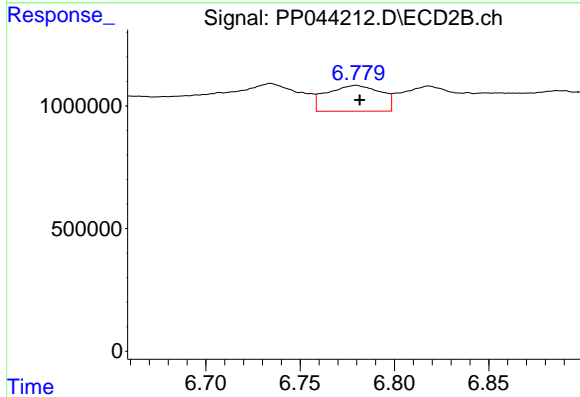
R.T.: 6.500 min
 Delta R.T.: -0.002 min
 Response: 2838709
 Conc: 27.35 ng/ml



#37 AR-1262-2

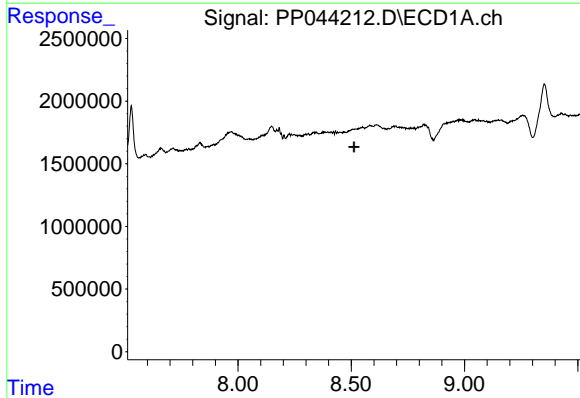
R.T.: 8.182 min
 Delta R.T.: 0.002 min
 Response: 1360342
 Conc: 8.19 ng/ml

Instrument :
 ECD_P
 ClientSampleId :



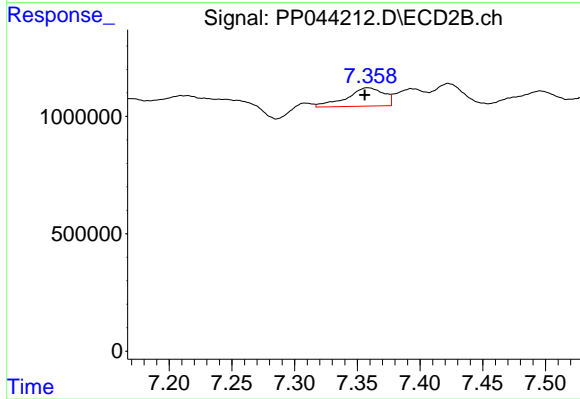
#37 AR-1262-2

R.T.: 6.780 min
 Delta R.T.: -0.002 min
 Response: 2092741
 Conc: 21.86 ng/ml



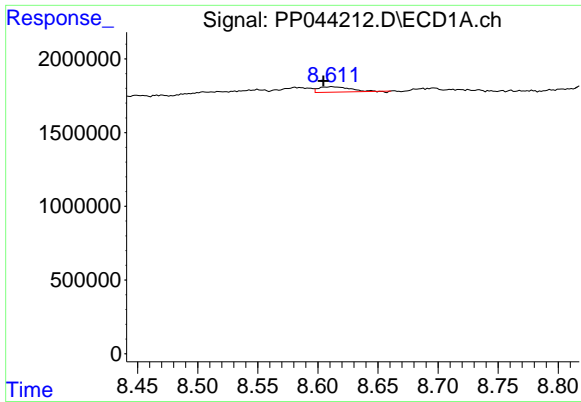
#38 AR-1262-3

R.T.: 0.000 min
 Exp R.T. : 8.512 min
 Response: 0
 Conc: N.D.



#38 AR-1262-3

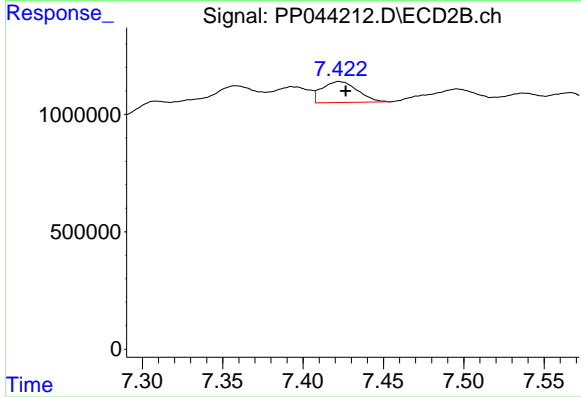
R.T.: 7.358 min
 Delta R.T.: 0.002 min
 Response: 1618191
 Conc: 20.51 ng/ml



#39 AR-1262-4

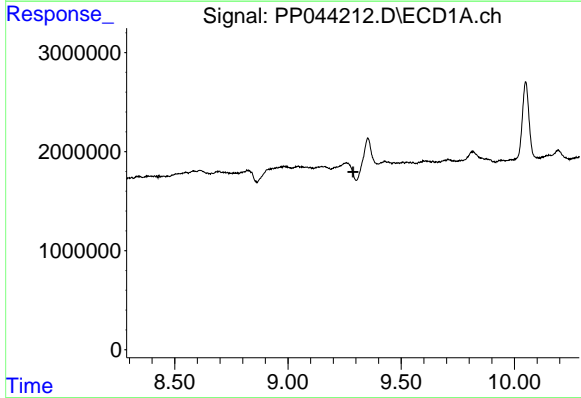
R.T.: 8.612 min
 Delta R.T.: 0.007 min
 Response: 648024
 Conc: 13.05 ng/ml

Instrument :
 ECD_P
 ClientSampleId :



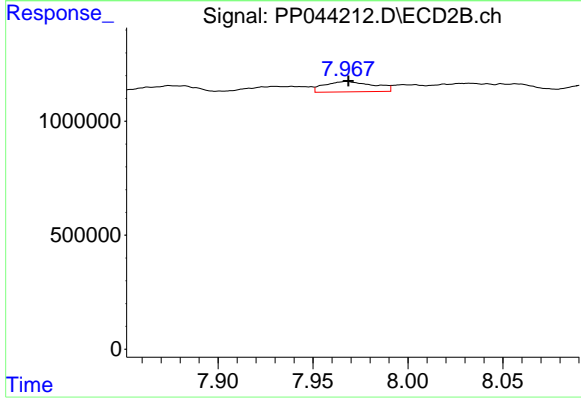
#39 AR-1262-4

R.T.: 7.423 min
 Delta R.T.: -0.004 min
 Response: 1375012
 Conc: 9.52 ng/ml



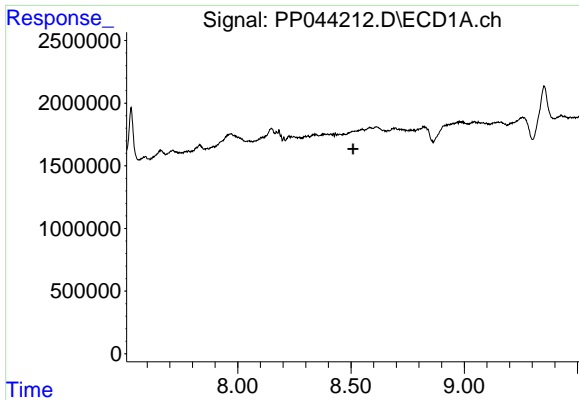
#40 AR-1262-5

R.T.: 0.000 min
 Exp R.T. : 9.287 min
 Response: 0
 Conc: N.D.



#40 AR-1262-5

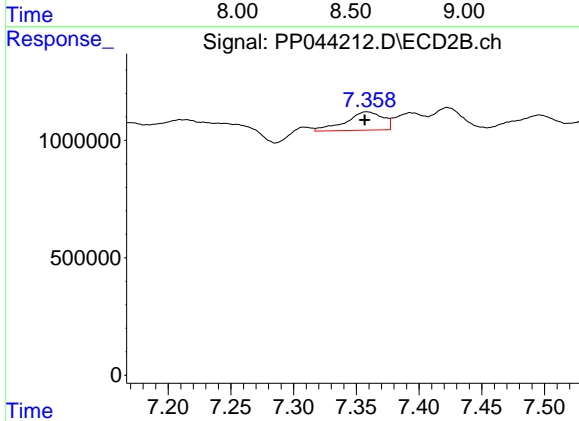
R.T.: 7.968 min
 Delta R.T.: 0.000 min
 Response: 821823
 Conc: 11.48 ng/ml



#41 AR-1268-1

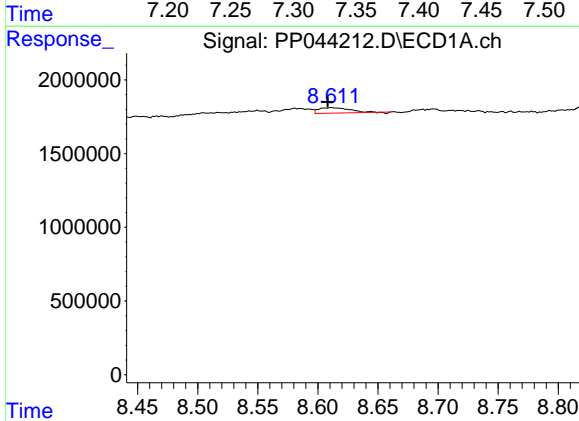
R.T.: 0.000 min
 Exp R.T.: 8.509 min
 Response: 0
 Conc: N.D.

Instrument :
 ECD_P
 ClientSampleId :



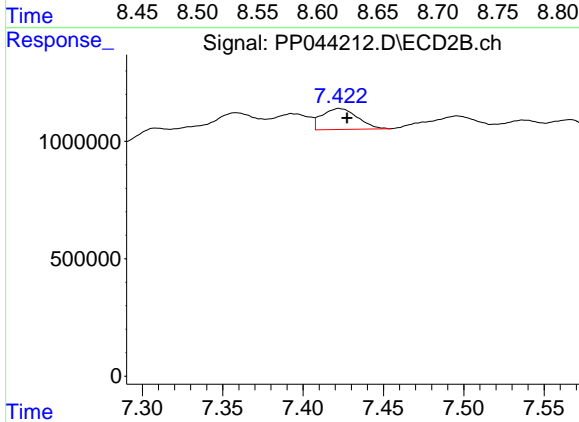
#41 AR-1268-1

R.T.: 7.358 min
 Delta R.T.: 0.002 min
 Response: 1618191
 Conc: 7.12 ng/ml



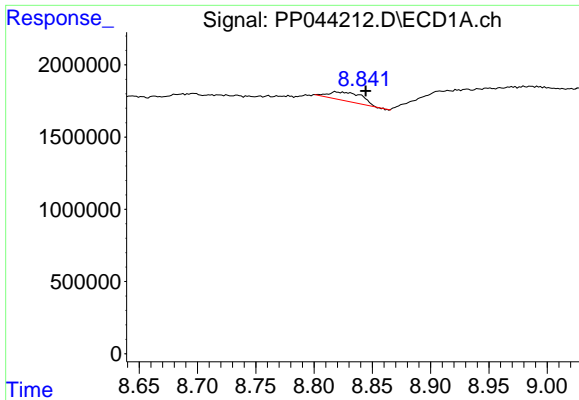
#42 AR-1268-2

R.T.: 8.612 min
 Delta R.T.: 0.004 min
 Response: 648024
 Conc: 3.56 ng/ml



#42 AR-1268-2

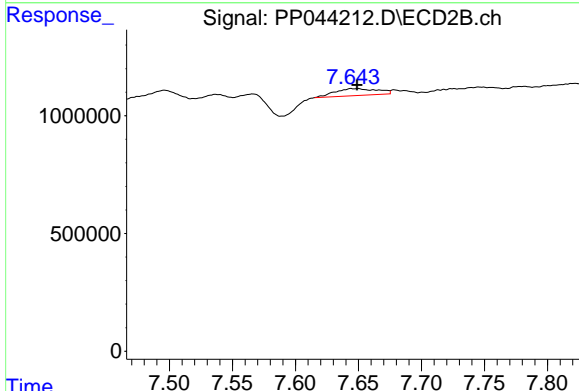
R.T.: 7.423 min
 Delta R.T.: -0.005 min
 Response: 1375012
 Conc: 6.71 ng/ml



#43 AR-1268-3

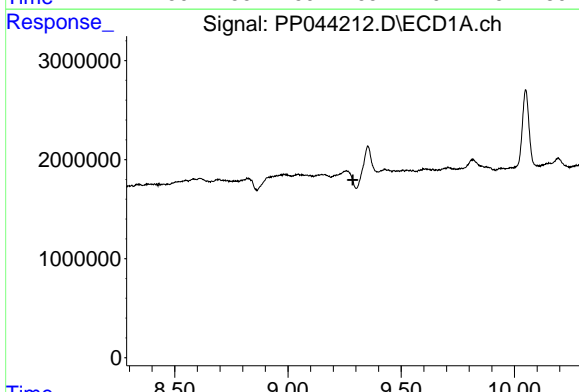
R.T.: 8.820 min
 Delta R.T.: -0.025 min
 Response: 1212966
 Conc: 7.86 ng/ml

Instrument :
 ECD_P
 ClientSampleId :



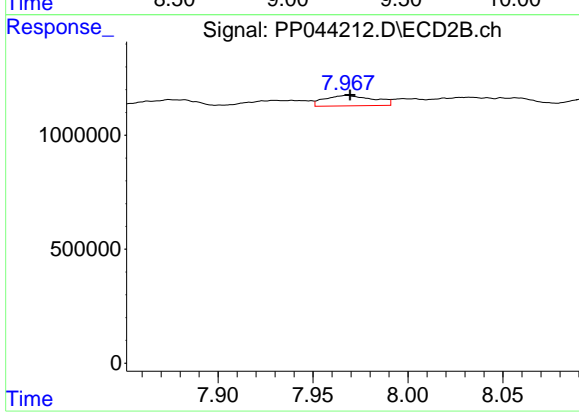
#43 AR-1268-3

R.T.: 7.645 min
 Delta R.T.: -0.004 min
 Response: 689834
 Conc: 3.95 ng/ml



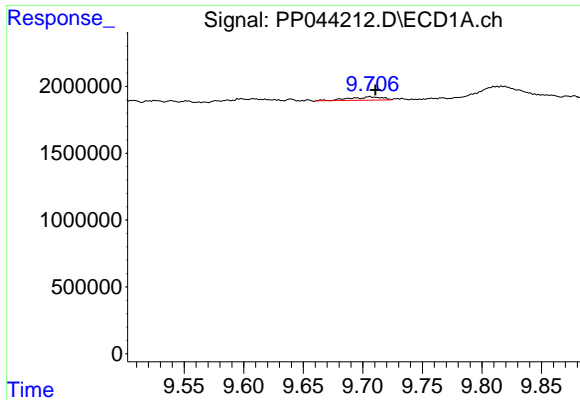
#44 AR-1268-4

R.T.: 0.000 min
 Exp R.T. : 9.287 min
 Response: 0
 Conc: N.D.



#44 AR-1268-4

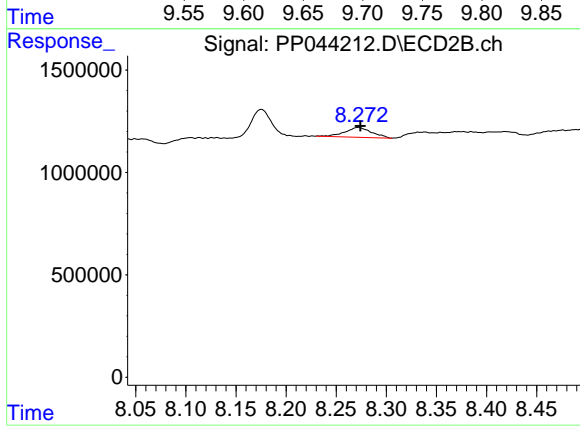
R.T.: 7.968 min
 Delta R.T.: -0.002 min
 Response: 821823
 Conc: 10.13 ng/ml



#45 AR-1268-5

R.T.: 9.706 min
 Delta R.T.: -0.004 min
 Response: 484653
 Conc: 1.03 ng/ml

Instrument :
 ECD_P
 ClientSampleId :



#45 AR-1268-5

R.T.: 8.272 min
 Delta R.T.: -0.002 min
 Response: 886186
 Conc: 1.64 ng/ml