

Data Path : Z:\pestpcbsrv\HPCHEM1\ECD_P\Data\PP030322\
 Data File : PP044221.D
 Signal(s) : Signal #1: ECD1A.ch Signal #2: ECD2B.ch
 Acq On : 03 Mar 2022 17:39
 Operator : YP\AJ
 Sample : N1751-07MS
 Misc :
 ALS Vial : 17 Sample Multiplier: 1

Instrument :
 ECD_P
ClientSampleId :
 DUM-14MS

Manual Integrations
APPROVED

Reviewed By :Yogesh Patel 03/04/2022
 Supervised By :Ankita Jodhani 03/04/2022

Integration File signal 1: autoint1.e
 Integration File signal 2: autoint2.e
 Quant Time: Mar 04 04:48:47 2022
 Quant Method : Z:\pestpcbsrv\HPCHEM1\ECD_P\methods\PP030222.M
 Quant Title : GC EXTRACTABLES
 QLast Update : Thu Mar 03 02:21:53 2022
 Response via : Initial Calibration
 Integrator: ChemStation

Volume Inj. : 2 µl
 Signal #1 Phase : ZB-MR1 Signal #2 Phase: ZB-MR2
 Signal #1 Info : 30Mx0.32mmx 0.50µ Signal #2 Info : 30M x 0.32mm x 0.25µm

Compound	RT#1	RT#2	Resp#1	Resp#2	ng/ml	ng/ml

System Monitoring Compounds						
1) SA Tetrachlo...	3.912	3.167	44627683	36286045	21.539	20.741
2) SA Decachlor...	10.050	8.536	23023875	27372023	16.728	17.844
Target Compounds						
3) L1 AR-1016-1	5.165	4.312	32076042	26412128	472.364	475.031
4) L1 AR-1016-2	5.188	4.330	48120299	36990883	475.166	477.404
5) L1 AR-1016-3	5.254	4.515	28471742	20575512	453.925	479.654
6) L1 AR-1016-4	5.359	4.564	24556682	16037464	473.028	475.809
7) L1 AR-1016-5	5.681	4.789	25411641	21207636	504.543	509.852
26) L6 AR-1254-1	6.091	5.166	17983577	18503130	239.788	223.809
27) L6 AR-1254-2	6.330	5.326	24161046	16732761	215.025	232.598
28) L6 AR-1254-3	6.733	5.763	16434926	8017640	140.450	69.590m#
29) L6 AR-1254-4	7.042	6.008	6283286	3487668	78.149	46.327 #
30) L6 AR-1254-5	7.503	6.459	54988037	55190154	631.716m	506.422
31) L7 AR-1260-1	6.910	5.899	39925429	44466965	454.317	554.331
32) L7 AR-1260-2	7.191	6.106	62810154	43216843	653.866	438.730 #
33) L7 AR-1260-3	7.588	6.268	28562963	42465914	440.243	457.859
34) L7 AR-1260-4	7.835	6.781	36324737	32654161	465.725	457.959
35) L7 AR-1260-5	8.179	7.048	63624004	73440498	453.952	444.773

(f)=RT Delta > 1/2 Window (#)=Amounts differ by > 25% (m)=manual int.

Data Path : Z:\pestpcbsrv\HPCHEM1\ECD_P\Data\PP030322\
 Data File : PP044221.D
 Signal(s) : Signal #1: ECD1A.ch Signal #2: ECD2B.ch
 Acq On : 03 Mar 2022 17:39
 Operator : YP\AJ
 Sample : N1751-07MS
 Misc :
 ALS Vial : 17 Sample Multiplier: 1

Instrument :

ECD_P

ClientSampleId :

DUM-14MS

Manual Integrations

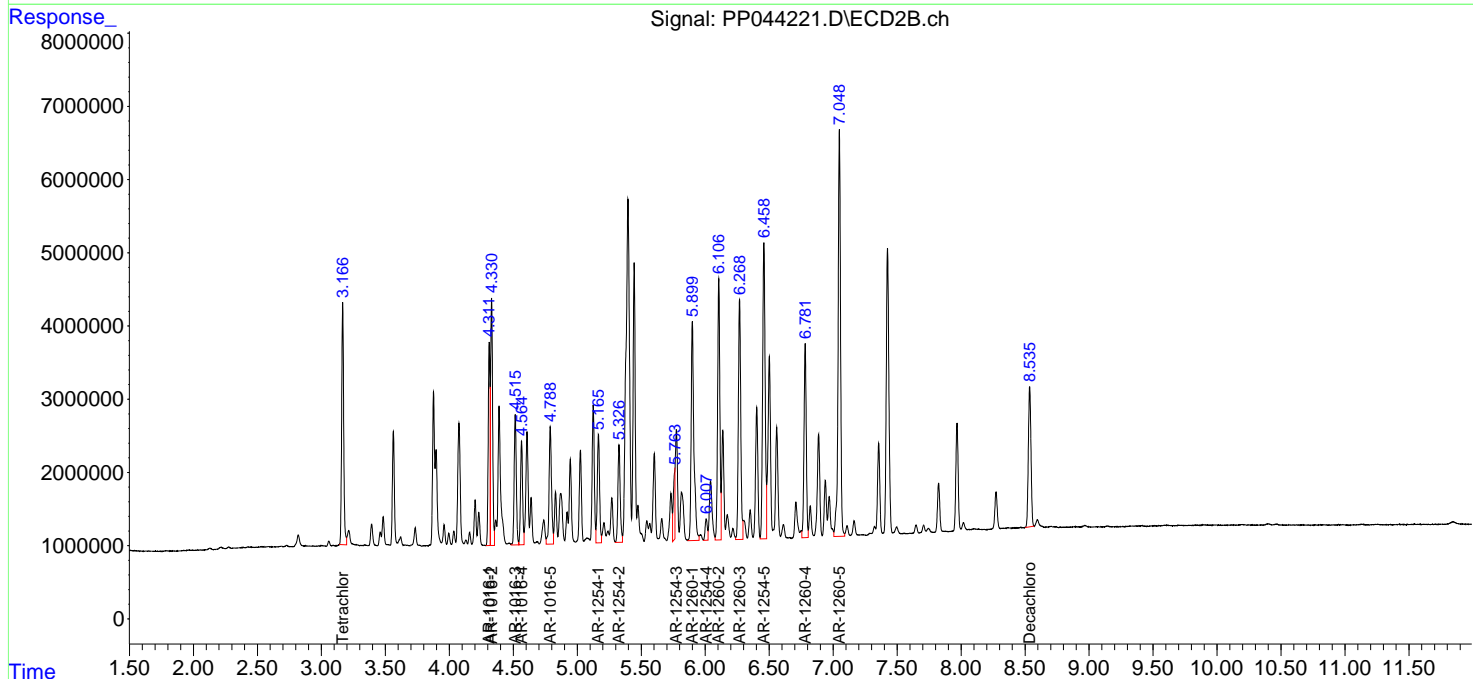
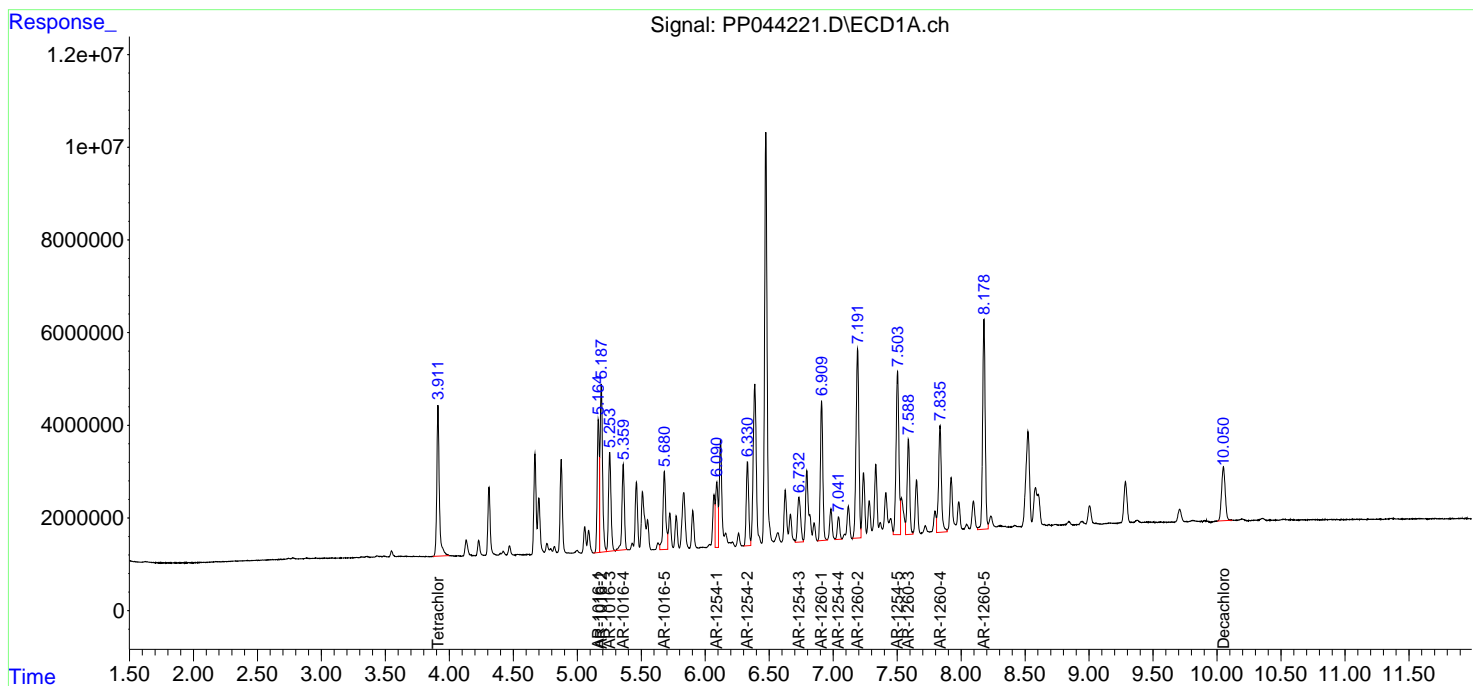
APPROVED

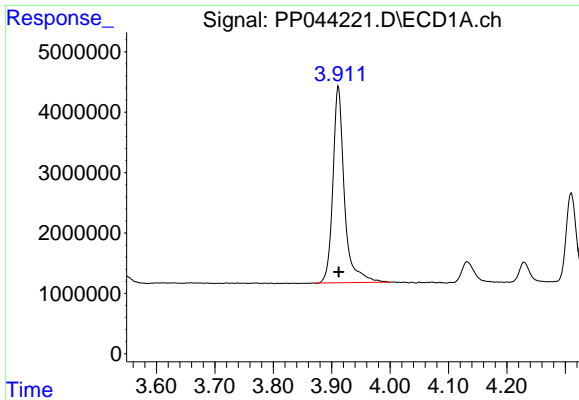
Reviewed By :Yogesh Patel 03/04/2022

Supervised By :Ankita Jodhani 03/04/2022

Integration File signal 1: autoint1.e
 Integration File signal 2: autoint2.e
 Quant Time: Mar 04 04:48:47 2022
 Quant Method : Z:\pestpcbsrv\HPCHEM1\ECD_P\methods\PP030222.M
 Quant Title : GC EXTRACTABLES
 QLast Update : Thu Mar 03 02:21:53 2022
 Response via : Initial Calibration
 Integrator: ChemStation

Volume Inj. : 2 µl
 Signal #1 Phase : ZB-MR1 Signal #2 Phase: ZB-MR2
 Signal #1 Info : 30Mx0.32mmx 0.50µ Signal #2 Info : 30M x 0.32mm x 0.25µm

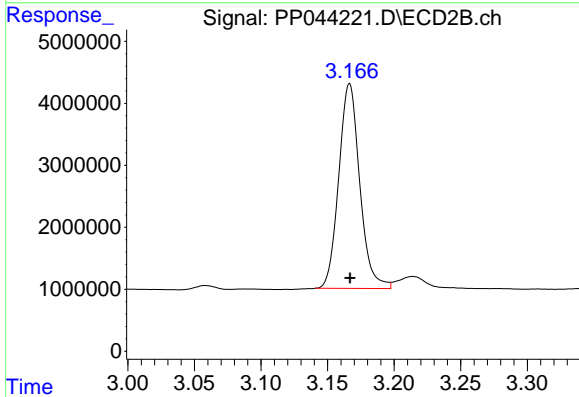




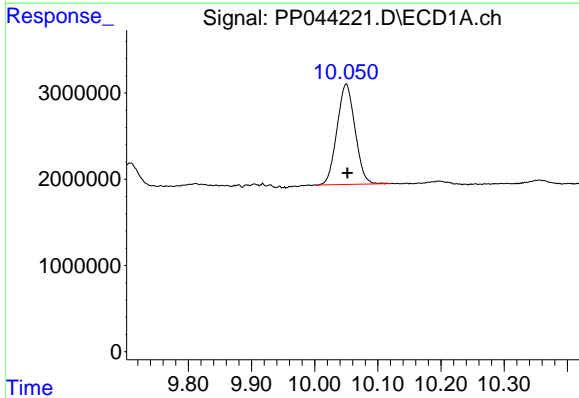
#1 Tetrachloro-m-xylene
 R.T.: 3.912 min
 Delta R.T.: 0.000 min
 Response: 44627683
 Conc: 21.54 ng/ml

Instrument : ECD_P
 Client Sample Id : DUM-14MS

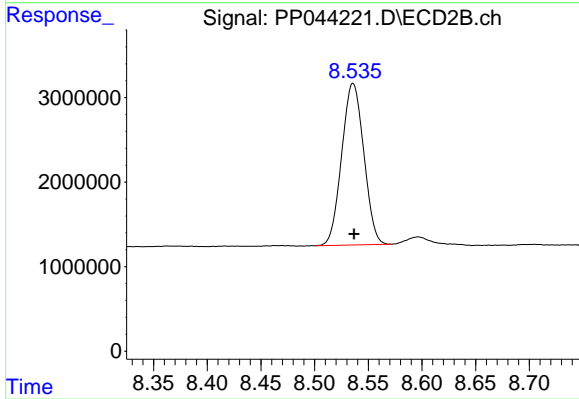
Manual Integrations
APPROVED
 Reviewed By :Yogesh Patel 03/04/2022
 Supervised By :Ankita Jodhani 03/04/2022



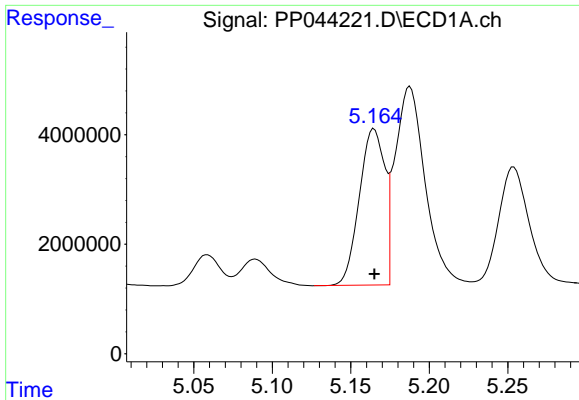
#1 Tetrachloro-m-xylene
 R.T.: 3.167 min
 Delta R.T.: 0.000 min
 Response: 36286045
 Conc: 20.74 ng/ml



#2 Decachlorobiphenyl
 R.T.: 10.050 min
 Delta R.T.: -0.001 min
 Response: 23023875
 Conc: 16.73 ng/ml



#2 Decachlorobiphenyl
 R.T.: 8.536 min
 Delta R.T.: 0.000 min
 Response: 27372023
 Conc: 17.84 ng/ml



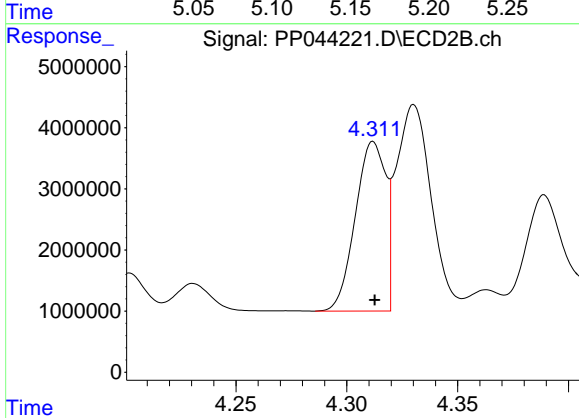
#3 AR-1016-1

R.T.: 5.165 min
 Delta R.T.: 0.000 min
 Response: 32076042
 Conc: 472.36 ng/ml

Instrument :
 ECD_P
 ClientSampleId :
 DUM-14MS

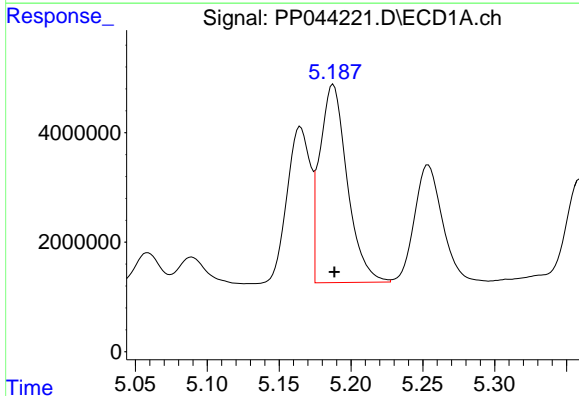
Manual Integrations
 APPROVED

Reviewed By :Yogesh Patel 03/04/2022
 Supervised By :Ankita Jodhani 03/04/2022



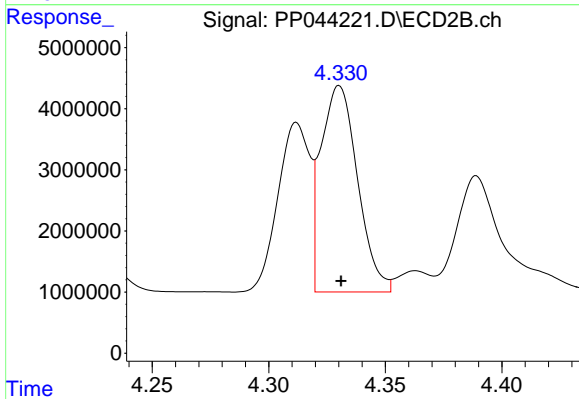
#3 AR-1016-1

R.T.: 4.312 min
 Delta R.T.: 0.000 min
 Response: 26412128
 Conc: 475.03 ng/ml



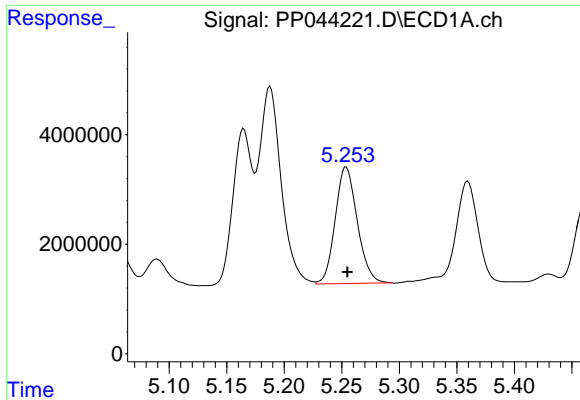
#4 AR-1016-2

R.T.: 5.188 min
 Delta R.T.: 0.000 min
 Response: 48120299
 Conc: 475.17 ng/ml



#4 AR-1016-2

R.T.: 4.330 min
 Delta R.T.: 0.000 min
 Response: 36990883
 Conc: 477.40 ng/ml



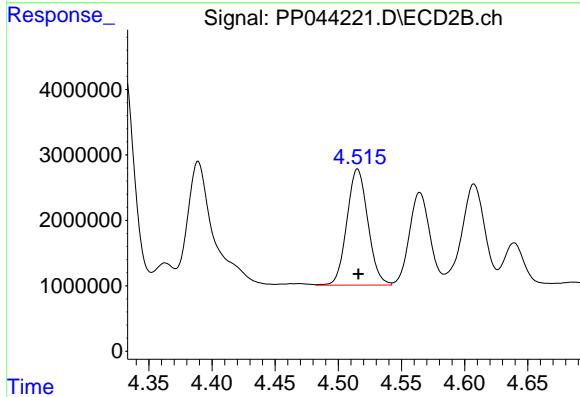
#5 AR-1016-3

R.T.: 5.254 min
 Delta R.T.: 0.000 min
 Response: 28471742
 Conc: 453.92 ng/ml

Instrument : ECD_P
 ClientSampleId : DUM-14MS

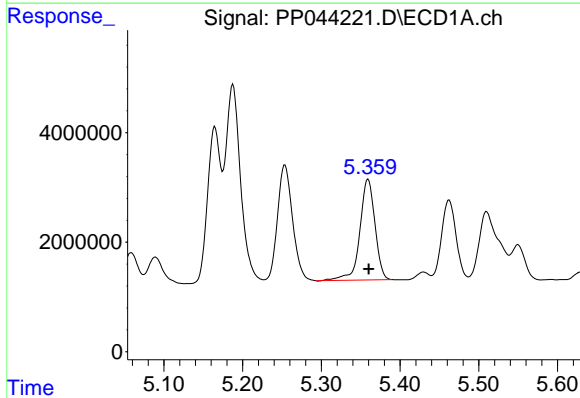
Manual Integrations
 APPROVED

Reviewed By :Yogesh Patel 03/04/2022
 Supervised By :Ankita Jodhani 03/04/2022



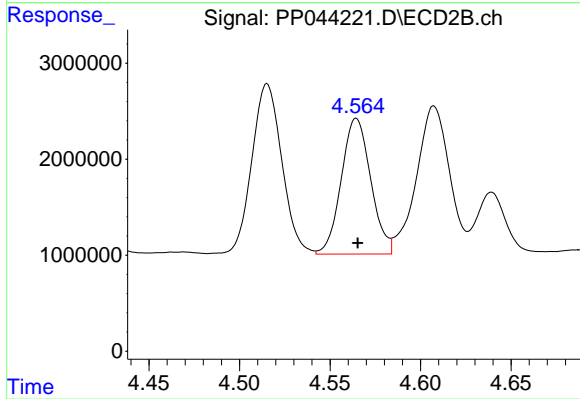
#5 AR-1016-3

R.T.: 4.515 min
 Delta R.T.: 0.000 min
 Response: 20575512
 Conc: 479.65 ng/ml



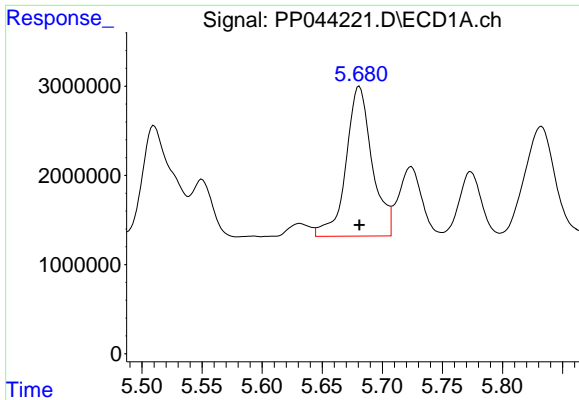
#6 AR-1016-4

R.T.: 5.359 min
 Delta R.T.: 0.000 min
 Response: 24556682
 Conc: 473.03 ng/ml



#6 AR-1016-4

R.T.: 4.564 min
 Delta R.T.: 0.000 min
 Response: 16037464
 Conc: 475.81 ng/ml



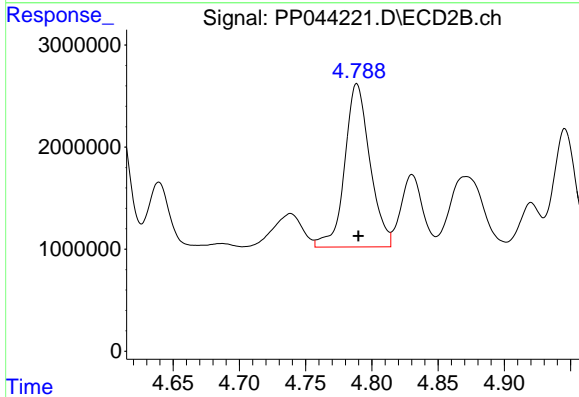
#7 AR-1016-5

R.T.: 5.681 min
 Delta R.T.: 0.000 min
 Response: 25411641
 Conc: 504.54 ng/ml

Instrument :
 ECD_P
 ClientSampleId :
 DUM-14MS

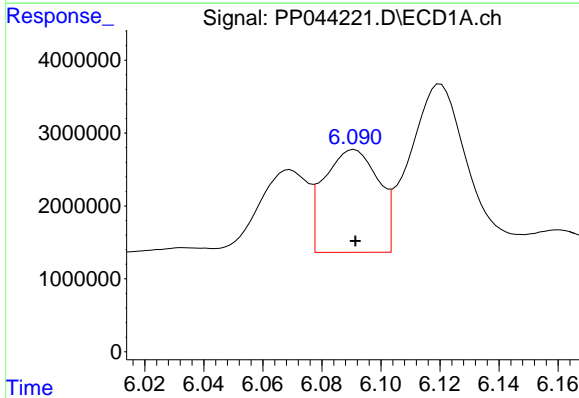
Manual Integrations
 APPROVED

Reviewed By :Yogesh Patel 03/04/2022
 Supervised By :Ankita Jodhani 03/04/2022



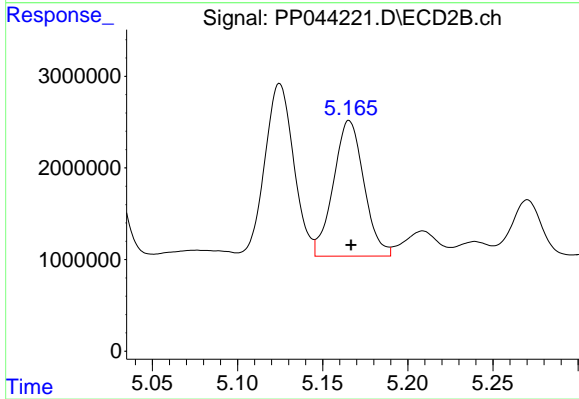
#7 AR-1016-5

R.T.: 4.789 min
 Delta R.T.: -0.001 min
 Response: 21207636
 Conc: 509.85 ng/ml



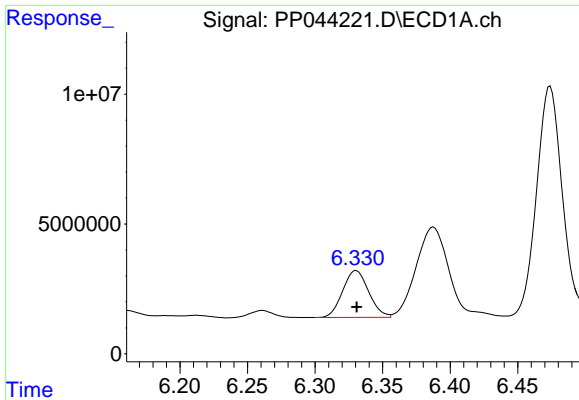
#26 AR-1254-1

R.T.: 6.091 min
 Delta R.T.: 0.000 min
 Response: 17983577
 Conc: 239.79 ng/ml



#26 AR-1254-1

R.T.: 5.166 min
 Delta R.T.: -0.001 min
 Response: 18503130
 Conc: 223.81 ng/ml

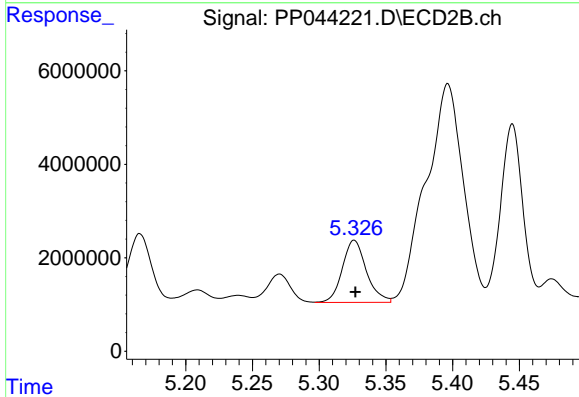


#27 AR-1254-2

R.T.: 6.330 min
 Delta R.T.: 0.000 min
 Response: 24161046
 Conc: 215.03 ng/ml

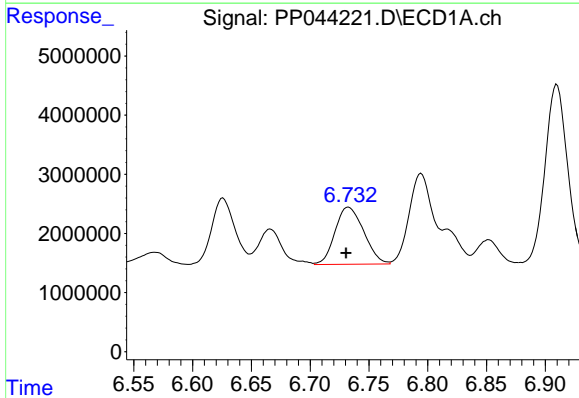
Instrument : ECD_P
 ClientSampleId : DUM-14MS

Manual Integrations
APPROVED
 Reviewed By :Yogesh Patel 03/04/2022
 Supervised By :Ankita Jodhani 03/04/2022



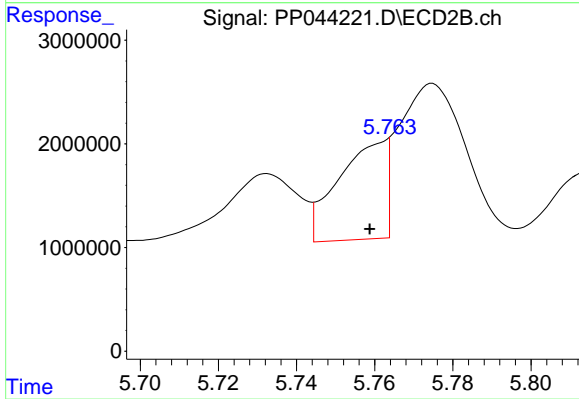
#27 AR-1254-2

R.T.: 5.326 min
 Delta R.T.: 0.000 min
 Response: 16732761
 Conc: 232.60 ng/ml



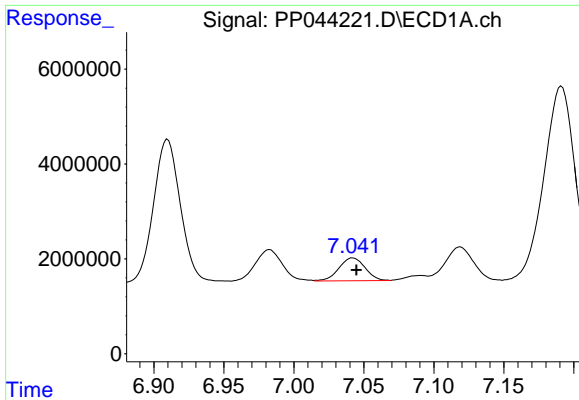
#28 AR-1254-3

R.T.: 6.733 min
 Delta R.T.: 0.002 min
 Response: 16434926
 Conc: 140.45 ng/ml



#28 AR-1254-3

R.T.: 5.763 min
 Delta R.T.: 0.004 min
 Response: 8017640
 Conc: 69.59 ng/ml m



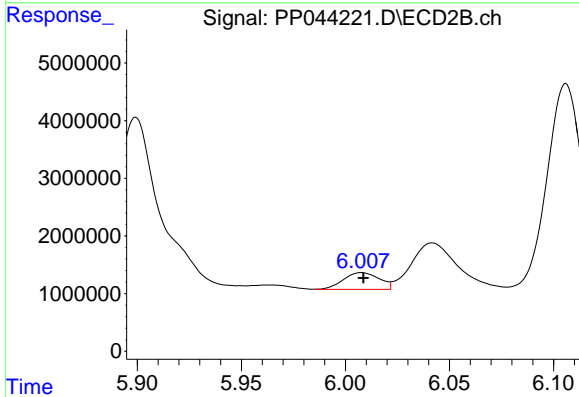
#29 AR-1254-4

R.T.: 7.042 min
 Delta R.T.: -0.002 min
 Response: 6283286
 Conc: 78.15 ng/ml

Instrument :
 ECD_P
 ClientSampleId :
 DUM-14MS

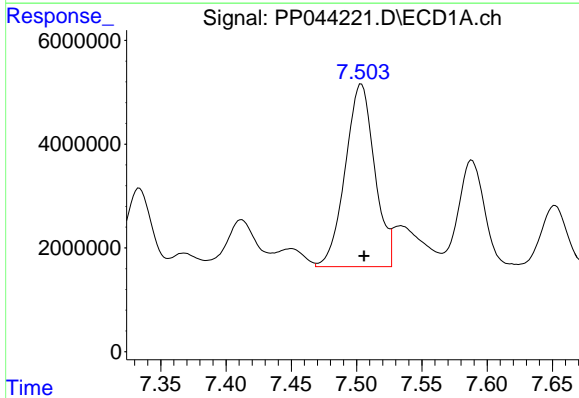
Manual Integrations
 APPROVED

Reviewed By :Yogesh Patel 03/04/2022
 Supervised By :Ankita Jodhani 03/04/2022



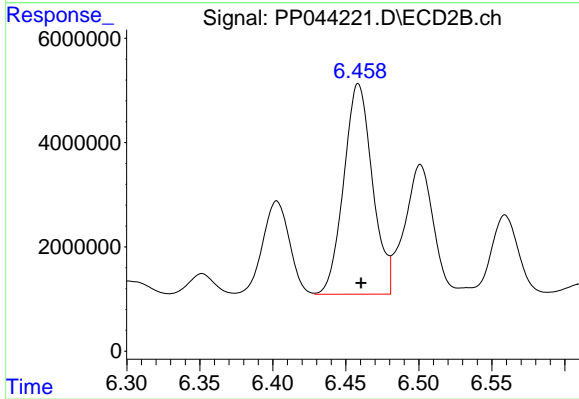
#29 AR-1254-4

R.T.: 6.008 min
 Delta R.T.: 0.000 min
 Response: 3487668
 Conc: 46.33 ng/ml



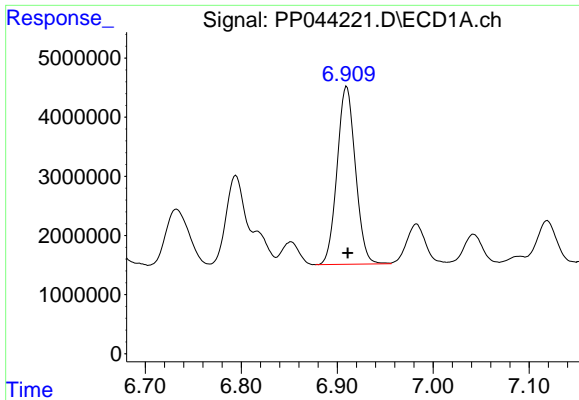
#30 AR-1254-5

R.T.: 7.503 min
 Delta R.T.: -0.003 min
 Response: 54988037
 Conc: 631.72 ng/ml m



#30 AR-1254-5

R.T.: 6.459 min
 Delta R.T.: -0.002 min
 Response: 55190154
 Conc: 506.42 ng/ml



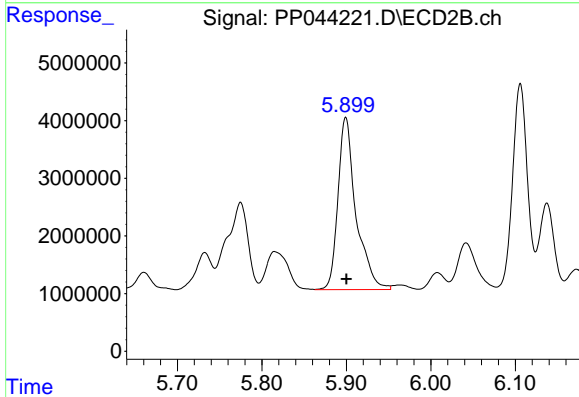
#31 AR-1260-1

R.T.: 6.910 min
 Delta R.T.: -0.001 min
 Response: 39925429
 Conc: 454.32 ng/ml

Instrument :
 ECD_P
 ClientSampleId :
 DUM-14MS

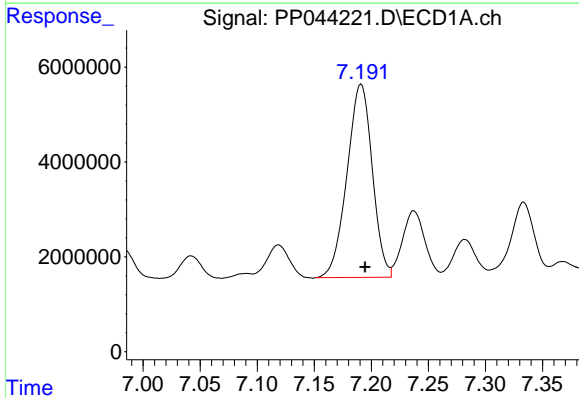
Manual Integrations
 APPROVED

Reviewed By :Yogesh Patel 03/04/2022
 Supervised By :Ankita Jodhani 03/04/2022



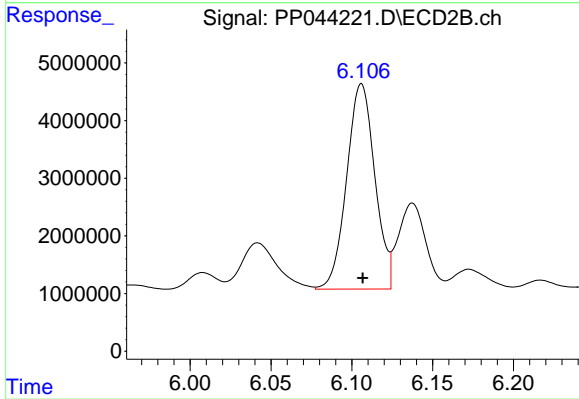
#31 AR-1260-1

R.T.: 5.899 min
 Delta R.T.: 0.000 min
 Response: 44466965
 Conc: 554.33 ng/ml



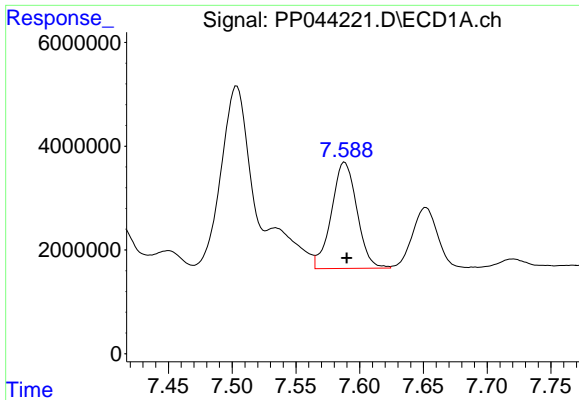
#32 AR-1260-2

R.T.: 7.191 min
 Delta R.T.: -0.003 min
 Response: 62810154
 Conc: 653.87 ng/ml



#32 AR-1260-2

R.T.: 6.106 min
 Delta R.T.: 0.000 min
 Response: 43216843
 Conc: 438.73 ng/ml



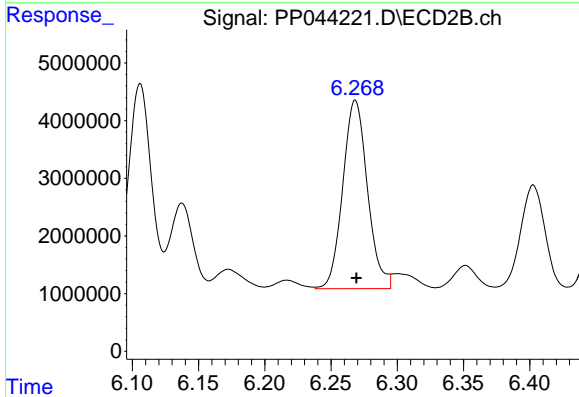
#33 AR-1260-3

R.T.: 7.588 min
 Delta R.T.: -0.001 min
 Response: 28562963
 Conc: 440.24 ng/ml

Instrument : ECD_P
 ClientSampleId : DUM-14MS

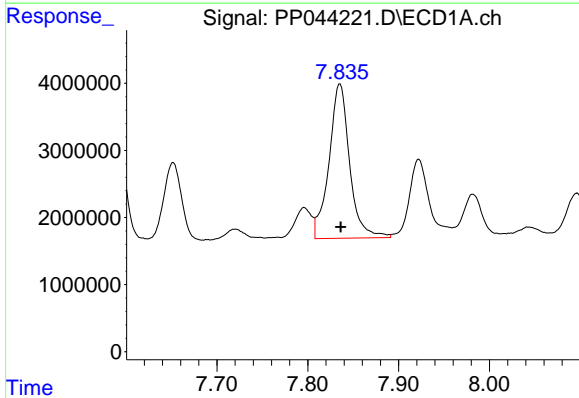
Manual Integrations
 APPROVED

Reviewed By :Yogesh Patel 03/04/2022
 Supervised By :Ankita Jodhani 03/04/2022



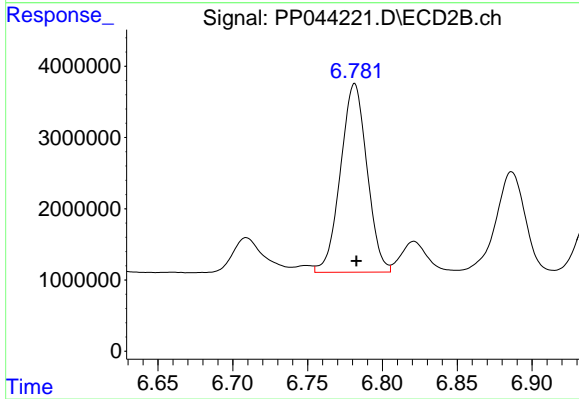
#33 AR-1260-3

R.T.: 6.268 min
 Delta R.T.: 0.000 min
 Response: 42465914
 Conc: 457.86 ng/ml



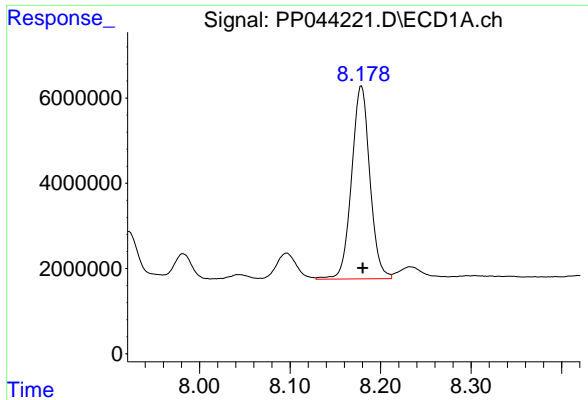
#34 AR-1260-4

R.T.: 7.835 min
 Delta R.T.: -0.001 min
 Response: 36324737
 Conc: 465.72 ng/ml



#34 AR-1260-4

R.T.: 6.781 min
 Delta R.T.: -0.001 min
 Response: 32654161
 Conc: 457.96 ng/ml



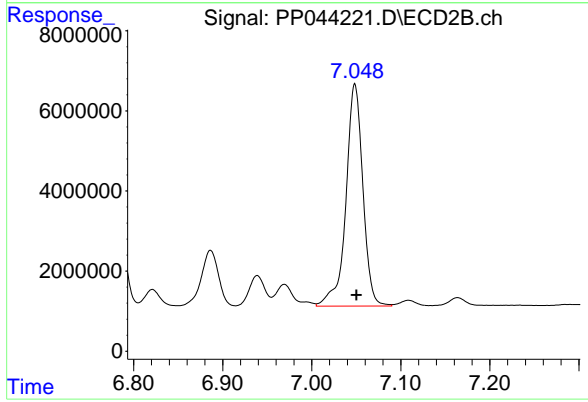
#35 AR-1260-5

R.T.: 8.179 min
 Delta R.T.: -0.001 min
 Response: 63624004
 Conc: 453.95 ng/ml

Instrument :
 ECD_P
 ClientSampleId :
 DUM-14MS

Manual Integrations
 APPROVED

Reviewed By :Yogesh Patel 03/04/2022
 Supervised By :Ankita Jodhani 03/04/2022



#35 AR-1260-5

R.T.: 7.048 min
 Delta R.T.: -0.002 min
 Response: 73440498
 Conc: 444.77 ng/ml