

Data Path : Z:\pestpcbsrv\HPCHEM1\ECD_P\Data\PP030322\
 Data File : PP044226.D
 Signal(s) : Signal #1: ECD1A.ch Signal #2: ECD2B.ch
 Acq On : 03 Mar 2022 18:55
 Operator : YP\AJ
 Sample : N1751-11
 Misc :
 ALS Vial : 22 Sample Multiplier: 1

Instrument :
 ECD_P
 ClientSampleId :
 DUM-16

Integration File signal 1: autoint1.e
 Integration File signal 2: autoint2.e
 Quant Time: Mar 04 01:07:14 2022
 Quant Method : Z:\pestpcbsrv\HPCHEM1\ECD_P\methods\PP030222.M
 Quant Title : GC EXTRACTABLES
 QLast Update : Thu Mar 03 02:21:53 2022
 Response via : Initial Calibration
 Integrator: ChemStation

Volume Inj. : 2 µl
 Signal #1 Phase : ZB-MR1 Signal #2 Phase: ZB-MR2
 Signal #1 Info : 30Mx0.32mmx 0.50µ Signal #2 Info : 30M x 0.32mm x 0.25µm

Compound	RT#1	RT#2	Resp#1	Resp#2	ng/ml	ng/ml

System Monitoring Compounds						
1) SA Tetrachlo...	3.912	3.168	45462604	40587856	21.942	23.200
2) SA Decachlor...	10.051	8.535	27018964	30430179	19.631	19.837

Target Compounds

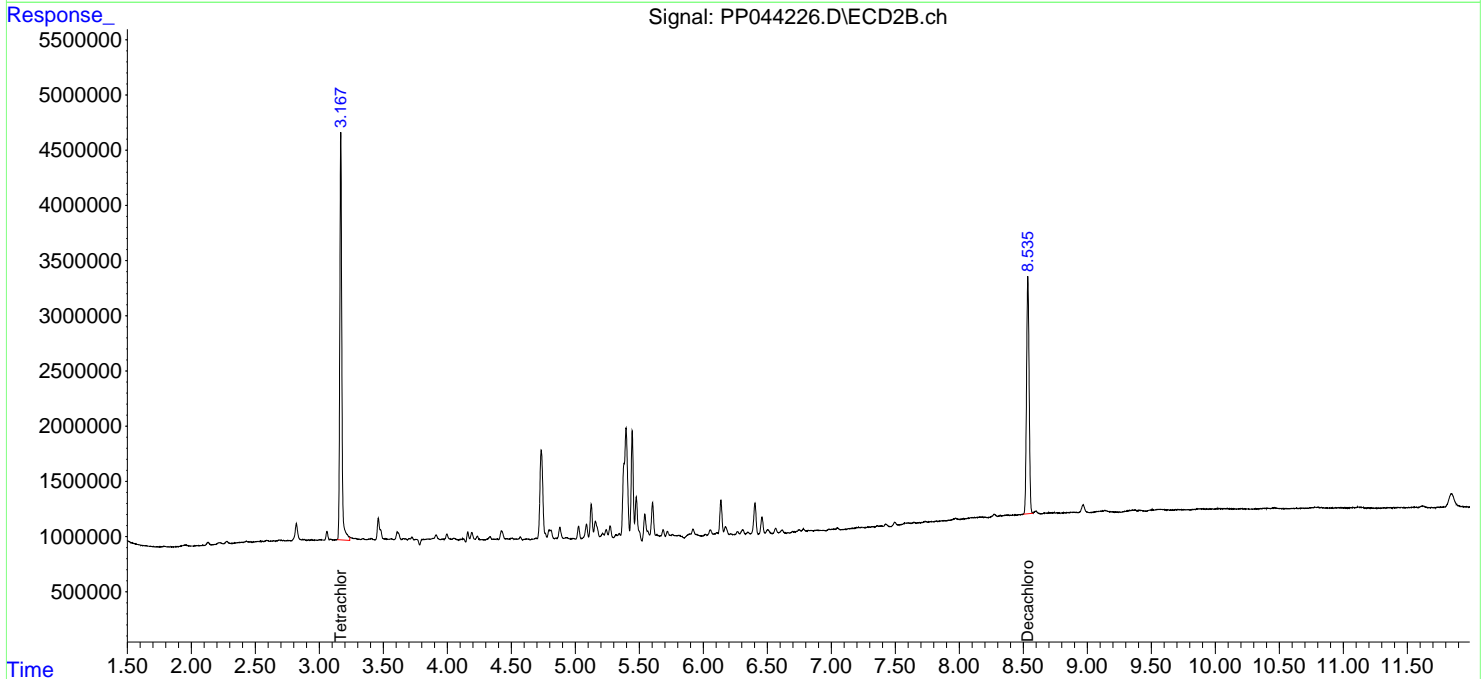
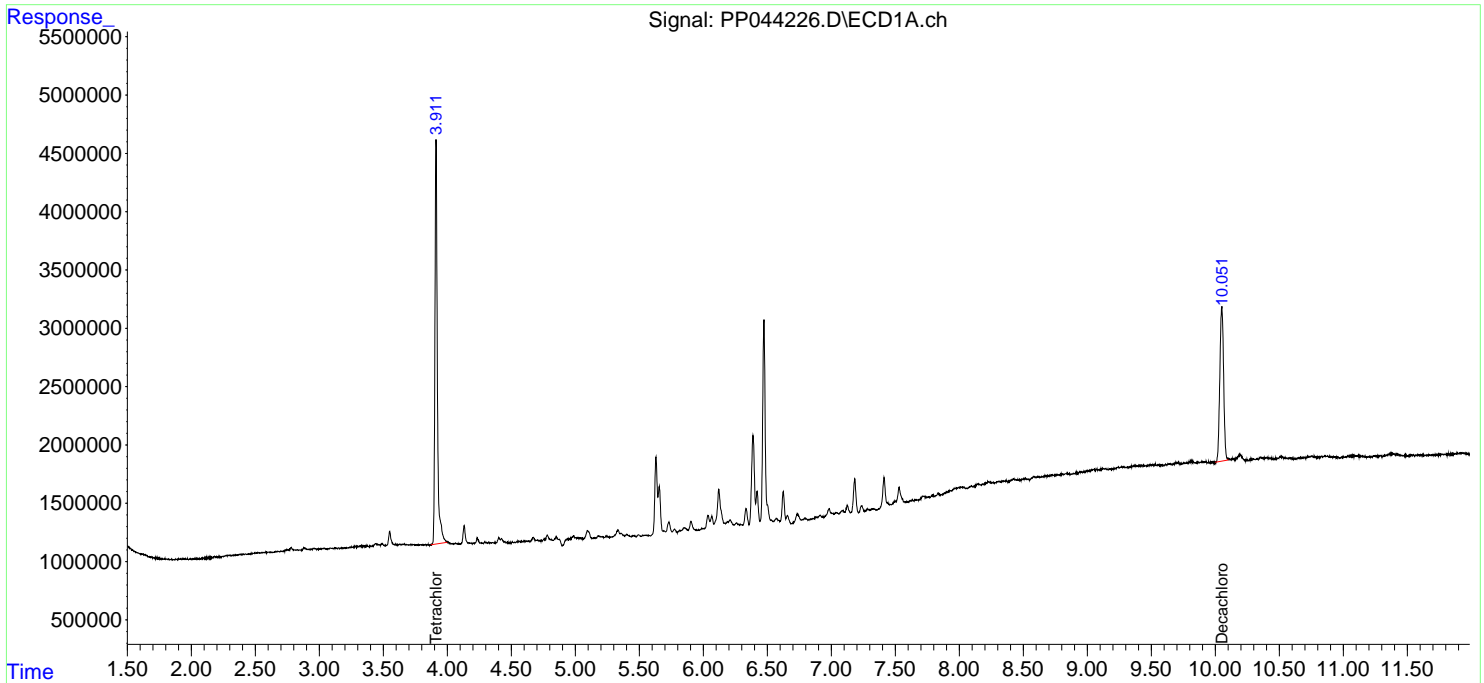
(f)=RT Delta > 1/2 Window (#)=Amounts differ by > 25% (m)=manual int.

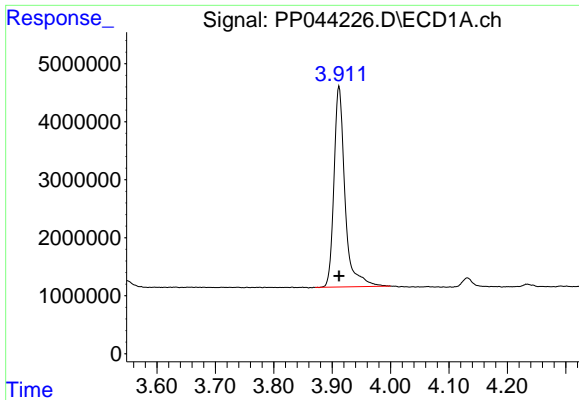
Data Path : Z:\pestpcbsrv\HPCHEM1\ECD_P\Data\PP030322\
 Data File : PP044226.D
 Signal(s) : Signal #1: ECD1A.ch Signal #2: ECD2B.ch
 Acq On : 03 Mar 2022 18:55
 Operator : YP\AJ
 Sample : N1751-11
 Misc :
 ALS Vial : 22 Sample Multiplier: 1

Instrument :
 ECD_P
 ClientSampleId :
 DUM-16

Integration File signal 1: autoint1.e
 Integration File signal 2: autoint2.e
 Quant Time: Mar 04 01:07:14 2022
 Quant Method : Z:\pestpcbsrv\HPCHEM1\ECD_P\methods\PP030222.M
 Quant Title : GC EXTRACTABLES
 QLast Update : Thu Mar 03 02:21:53 2022
 Response via : Initial Calibration
 Integrator: ChemStation

Volume Inj. : 2 µl
 Signal #1 Phase : ZB-MR1 Signal #2 Phase: ZB-MR2
 Signal #1 Info : 30Mx0.32mmx 0.50µ Signal #2 Info : 30M x 0.32mm x 0.25µm

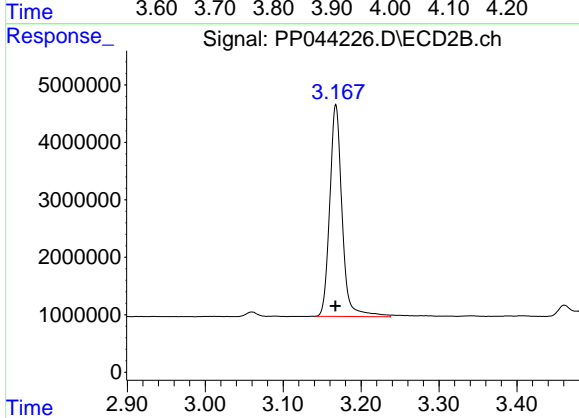




#1 Tetrachloro-m-xylene

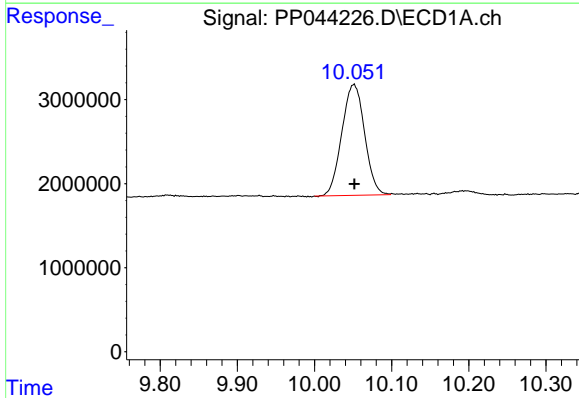
R.T.: 3.912 min
 Delta R.T.: 0.000 min
 Response: 45462604
 Conc: 21.94 ng/ml

Instrument :
 ECD_P
 ClientSampleId :
 DUM-16



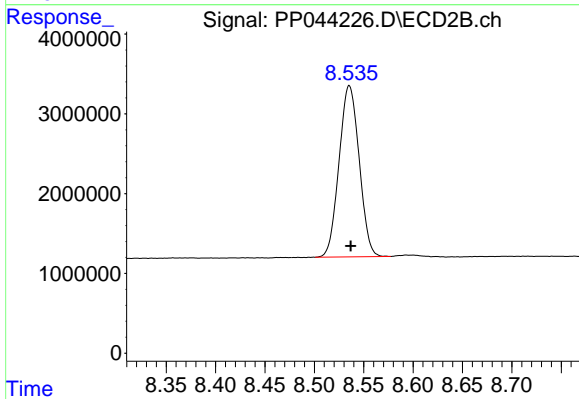
#1 Tetrachloro-m-xylene

R.T.: 3.168 min
 Delta R.T.: 0.000 min
 Response: 40587856
 Conc: 23.20 ng/ml



#2 Decachlorobiphenyl

R.T.: 10.051 min
 Delta R.T.: 0.000 min
 Response: 27018964
 Conc: 19.63 ng/ml



#2 Decachlorobiphenyl

R.T.: 8.535 min
 Delta R.T.: -0.001 min
 Response: 30430179
 Conc: 19.84 ng/ml