

Data Path : Z:\pestpcbsrv\HPCHEM1\ECD\_P\Data\PP030325\  
 Data File : PP070184.D  
 Signal(s) : Signal #1: ECD1A.ch Signal #2: ECD2B.ch  
 Acq On : 03 Mar 2025 15:22  
 Operator : YP\AJ  
 Sample : PB166954BL  
 Misc :  
 ALS Vial : 10 Sample Multiplier: 1

Instrument :  
 ECD\_P  
 ClientSampleId :  
 PB166954BL

Integration File signal 1: autoint1.e  
 Integration File signal 2: autoint2.e  
 Quant Time: Mar 03 15:37:42 2025  
 Quant Method : Z:\pestpcbsrv\HPCHEM1\ECD\_P\methods\PP022425.M  
 Quant Title : GC EXTRACTABLES  
 QLast Update : Tue Feb 25 05:10:19 2025  
 Response via : Initial Calibration  
 Integrator: ChemStation

Volume Inj. : 2 µl  
 Signal #1 Phase : ZB-MR1 Signal #2 Phase: ZB-MR2  
 Signal #1 Info : 30Mx0.32mmx 0.50µ Signal #2 Info : 30M x 0.32mm x 0.25µm

Compound	RT#1	RT#2	Resp#1	Resp#2	ng/ml	ng/ml
-----						
System Monitoring Compounds						
1) SA Tetrachlo...	4.525	3.828	32249856	20315270	21.974	21.250
2) SA Decachlor...	10.250	8.881	23379879	22150554	20.526	20.432

Target Compounds

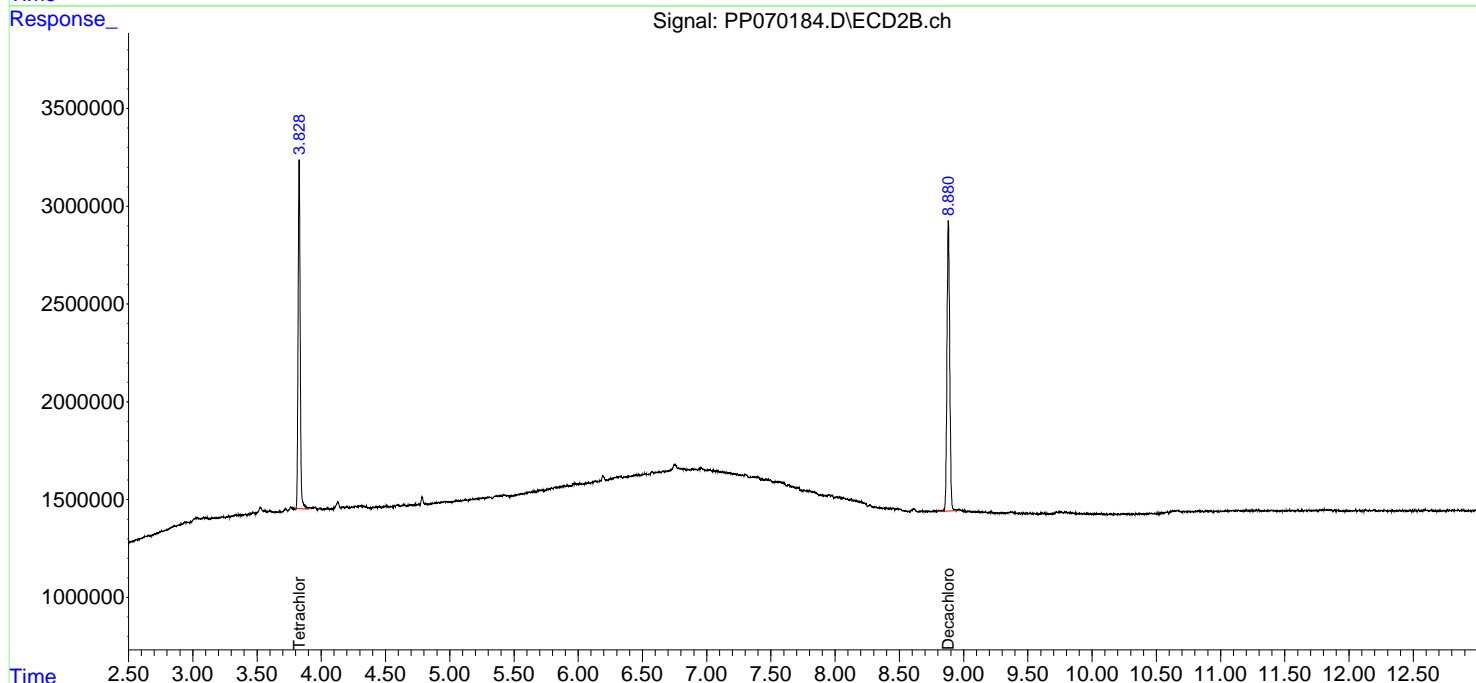
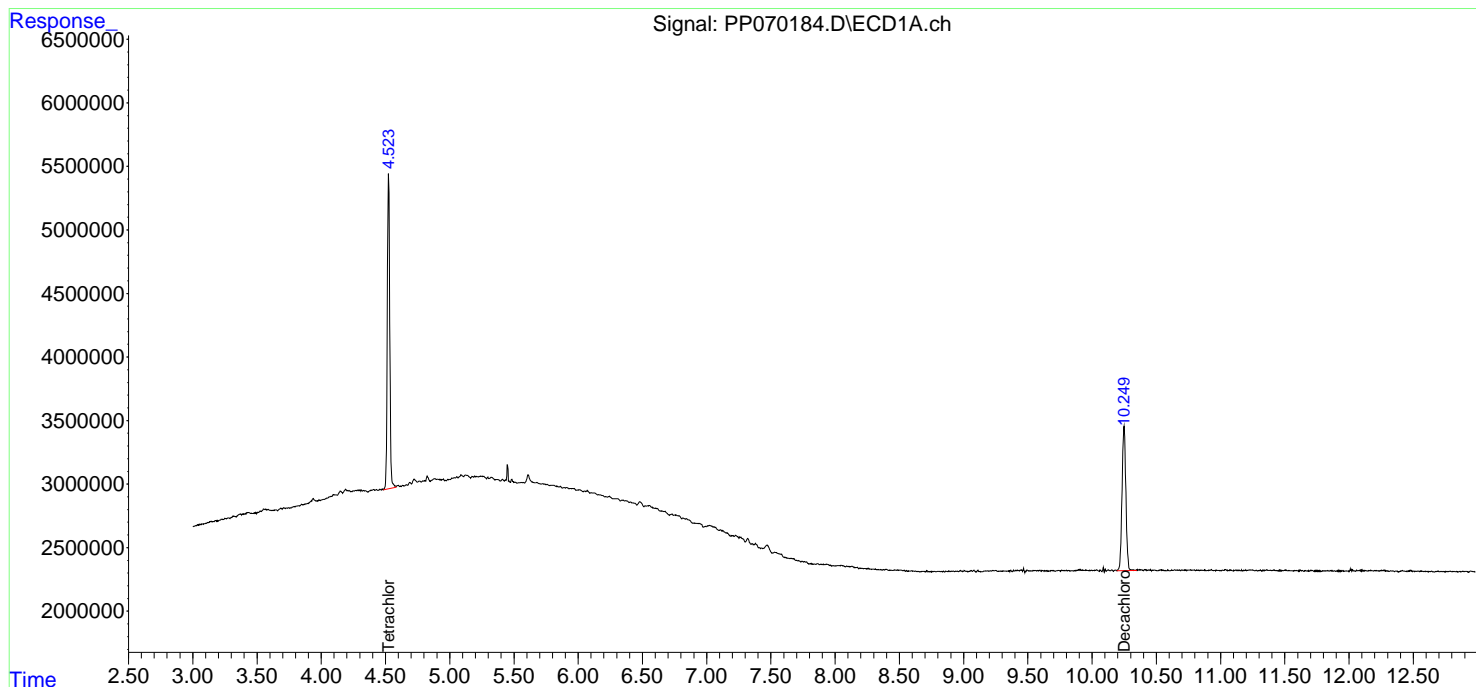
(f)=RT Delta > 1/2 Window (#)=Amounts differ by > 25% (m)=manual int.

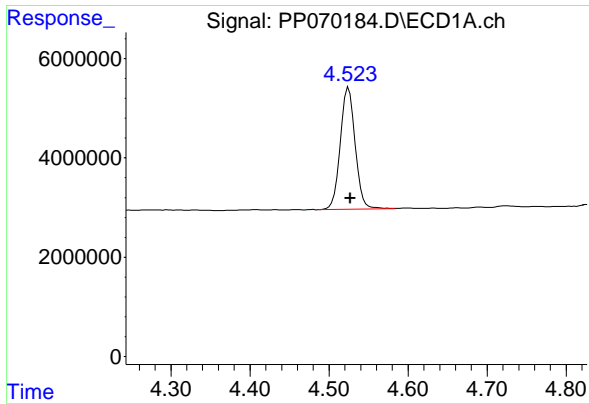
Data Path : Z:\pestpcbsrv\HPCHEM1\ECD\_P\Data\PP030325\  
 Data File : PP070184.D  
 Signal(s) : Signal #1: ECD1A.ch Signal #2: ECD2B.ch  
 Acq On : 03 Mar 2025 15:22  
 Operator : YP\AJ  
 Sample : PB166954BL  
 Misc :  
 ALS Vial : 10 Sample Multiplier: 1

Instrument :  
 ECD\_P  
 ClientSampleId :  
 PB166954BL

Integration File signal 1: autoint1.e  
 Integration File signal 2: autoint2.e  
 Quant Time: Mar 03 15:37:42 2025  
 Quant Method : Z:\pestpcbsrv\HPCHEM1\ECD\_P\methods\PP022425.M  
 Quant Title : GC EXTRACTABLES  
 QLast Update : Tue Feb 25 05:10:19 2025  
 Response via : Initial Calibration  
 Integrator: ChemStation

Volume Inj. : 2 µl  
 Signal #1 Phase : ZB-MR1 Signal #2 Phase: ZB-MR2  
 Signal #1 Info : 30Mx0.32mmx 0.50µm Signal #2 Info : 30M x 0.32mm x 0.25µm

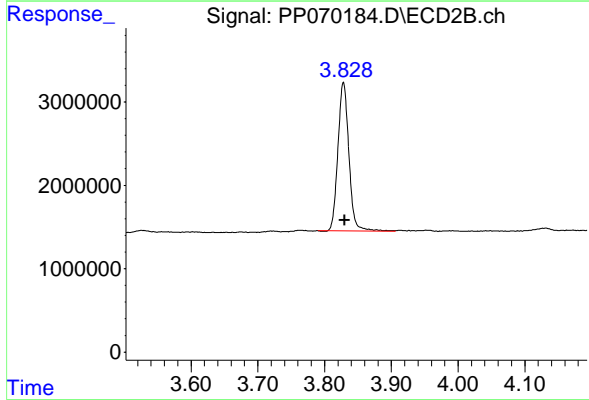




#1 Tetrachloro-m-xylene

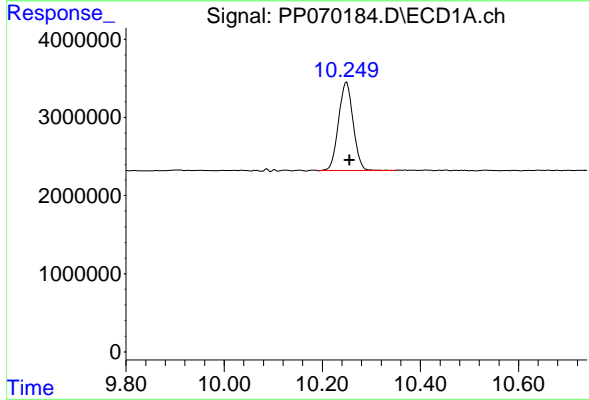
R.T.: 4.525 min  
 Delta R.T.: -0.002 min  
 Response: 32249856  
 Conc: 21.97 ng/ml

Instrument :  
 ECD\_P  
 ClientSampleId :  
 PB166954BL



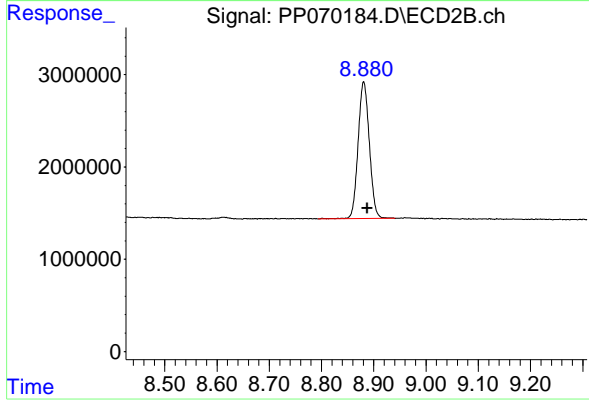
#1 Tetrachloro-m-xylene

R.T.: 3.828 min  
 Delta R.T.: -0.002 min  
 Response: 20315270  
 Conc: 21.25 ng/ml



#2 Decachlorobiphenyl

R.T.: 10.250 min  
 Delta R.T.: -0.006 min  
 Response: 23379879  
 Conc: 20.53 ng/ml



#2 Decachlorobiphenyl

R.T.: 8.881 min  
 Delta R.T.: -0.007 min  
 Response: 22150554  
 Conc: 20.43 ng/ml