

Data Path : Z:\pestpcbsrv\HPCHEM1\ECD\_P\Data\PP030525\  
 Data File : PP070274.D  
 Signal(s) : Signal #1: ECD1A.ch Signal #2: ECD2B.ch  
 Acq On : 05 Mar 2025 18:13  
 Operator : YP\AJ  
 Sample : AR1660CCC500  
 Misc :  
 ALS Vial : 3 Sample Multiplier: 1

Instrument :  
 ECD\_P  
 ClientSampleId :  
 AR1660CCC500

Integration File signal 1: autoint1.e  
 Integration File signal 2: autoint2.e  
 Quant Time: Mar 06 00:25:55 2025  
 Quant Method : Z:\pestpcbsrv\HPCHEM1\ECD\_P\methods\PP022425.M  
 Quant Title : GC EXTRACTABLES  
 QLast Update : Tue Feb 25 05:10:19 2025  
 Response via : Initial Calibration  
 Integrator: ChemStation

Volume Inj. : 2 µl  
 Signal #1 Phase : ZB-MR1 Signal #2 Phase: ZB-MR2  
 Signal #1 Info : 30Mx0.32mmx 0.50µ Signal #2 Info : 30M x 0.32mm x 0.25µm

Compound	RT#1	RT#2	Resp#1	Resp#2	ng/ml	ng/ml
System Monitoring Compounds						
1) SA Tetrachlo...	4.526	3.828	81609451	50410799	55.607	52.729
2) SA Decachlor...	10.252	8.883	57370683	55115234	50.368	50.839
Target Compounds						
3) L1 AR-1016-1	5.679	4.917	25894897	17637162	519.705	528.081
4) L1 AR-1016-2	5.701	4.936	38156560	24452415	539.102	524.795
5) L1 AR-1016-3	5.763	5.113	23649141	13433405	538.430	536.640
6) L1 AR-1016-4	5.860	5.155	19874013	10717747	548.077	534.000
7) L1 AR-1016-5	6.154	5.370	17422510	14360561	519.477	553.467
8) L2 AR-1221-1	4.724	4.038	2416186	2035818	127.733	151.687
9) L2 AR-1221-2	4.813	4.127	4009534	3153371	274.783	310.183
10) L2 AR-1221-3	4.889	4.202	13892063	10013508	321.887	329.830
11) L3 AR-1232-1	4.889	4.202	13892063	10013508	422.458	440.308
12) L3 AR-1232-2	5.414	4.936	17734748	24452415	1090.684	1070.912
13) L3 AR-1232-3	5.701	5.113	38156560	13433405	1094.341	1117.218
14) L3 AR-1232-4	5.860	5.198	19874013	12850648	1116.552	1182.721
15) L3 AR-1232-5	5.951	5.370	16515215	14360561	1309.984	1270.238
16) L4 AR-1242-1	5.701	4.936	38156560	24452415	898.749	916.935
17) L4 AR-1242-2	5.701	4.936	38156560	24452415	663.102	657.301
18) L4 AR-1242-3	5.763	5.113	23649141	13433405	623.571	682.393
19) L4 AR-1242-4	5.860	5.198	19874013	12850648	666.583	653.814
20) L4 AR-1242-5	6.592	5.724	6621791	13839178	187.931	556.426 #
21) L5 AR-1248-1	5.679	4.936	25894897	24452415	791.647	1155.067 #
22) L5 AR-1248-2	5.951	5.155	16515215	10717747	391.799	379.357
23) L5 AR-1248-3	6.154	5.198	17422510	12850648	385.691	431.873
24) L5 AR-1248-4	6.552	5.370	6051905	14360561	102.638	408.604 #
25) L5 AR-1248-5	6.592	5.764	6621791	3527883	115.794	97.541
26) L6 AR-1254-1	6.529	5.724	17623805	13839178	310.824	253.607
27) L6 AR-1254-2	6.745	5.872	14974402	9983669	170.774	204.812
28) L6 AR-1254-3	7.109	6.293	7987341	23817540	89.618	314.147 #
29) L6 AR-1254-4	7.392	6.536	5862527	6221320	78.680	120.896 #
30) L6 AR-1254-5	7.806	6.925	43090299	34510946	641.585	510.749
31) L7 AR-1260-1	7.274	6.408	30020545	25277974	514.403	510.261
32) L7 AR-1260-2	7.527	6.596	40825247	33658104	499.542	514.492
33) L7 AR-1260-3	7.886	6.750	33224750	29291596	529.385	485.587
34) L7 AR-1260-4	8.110	7.223	32050442	26472099	505.520	541.713
35) L7 AR-1260-5	8.431	7.464	68941760	67274035	525.532	564.499
36) L8 AR-1262-1	8.110	6.962	32050442	31330798	397.012	375.330
37) L8 AR-1262-2	8.431	7.223	68941760	26472099	427.977	399.331
38) L8 AR-1262-3	8.755	7.747	42891196	16363448	387.763	270.111 #
39) L8 AR-1262-4	8.820	7.810	27182428	45666696	323.932	432.967 #
40) L8 AR-1262-5	9.491	8.313	19731140	18011368	335.537	346.839
41) L9 AR-1268-1	8.755	7.747	42891196	16363448	223.283	98.724 #

Data Path : Z:\pestpcbsrv\HPCHEM1\ECD\_P\Data\PP030525\  
 Data File : PP070274.D  
 Signal(s) : Signal #1: ECD1A.ch Signal #2: ECD2B.ch  
 Acq On : 05 Mar 2025 18:13  
 Operator : YP\AJ  
 Sample : AR1660CCC500  
 Misc :  
 ALS Vial : 3 Sample Multiplier: 1

Instrument :  
 ECD\_P  
 ClientSampleId :  
 AR1660CCC500

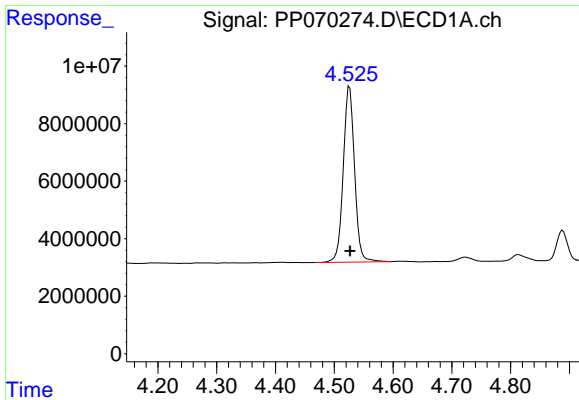
Integration File signal 1: autoint1.e  
 Integration File signal 2: autoint2.e  
 Quant Time: Mar 06 00:25:55 2025  
 Quant Method : Z:\pestpcbsrv\HPCHEM1\ECD\_P\methods\PP022425.M  
 Quant Title : GC EXTRACTABLES  
 QLast Update : Tue Feb 25 05:10:19 2025  
 Response via : Initial Calibration  
 Integrator: ChemStation

Volume Inj. : 2 µl  
 Signal #1 Phase : ZB-MR1 Signal #2 Phase: ZB-MR2  
 Signal #1 Info : 30Mx0.32mmx 0.50µ Signal #2 Info : 30M x 0.32mm x 0.25µm

	Compound	RT#1	RT#2	Resp#1	Resp#2	ng/ml	ng/ml
42)	L9 AR-1268-2	8.820	7.810	27182428	45666696	164.160	314.852 #
43)	L9 AR-1268-3	9.072	8.018	891749	802190	6.214	6.550
44)	L9 AR-1268-4	9.491	8.313	19731140	18011368	312.948	338.655
45)	L9 AR-1268-5	9.911	8.617	5014722	5065230	12.057	14.259

(f)=RT Delta > 1/2 Window (#)=Amounts differ by > 25% (m)=manual int.

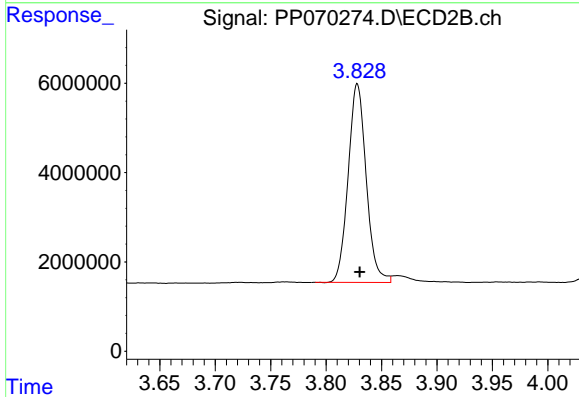




#1 Tetrachloro-m-xylene

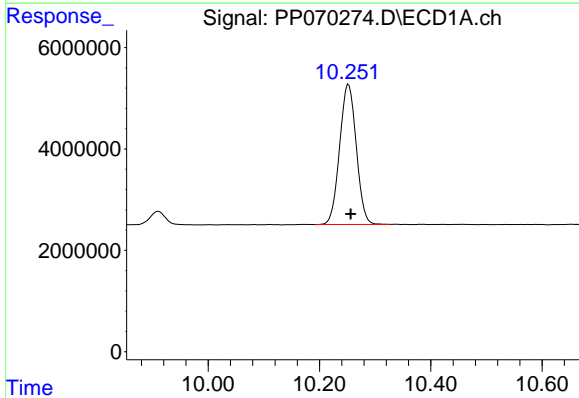
R.T.: 4.526 min  
 Delta R.T.: 0.000 min  
 Response: 81609451  
 Conc: 55.61 ng/ml

Instrument :  
 ECD\_P  
 ClientSampleId :  
 AR1660CCC500



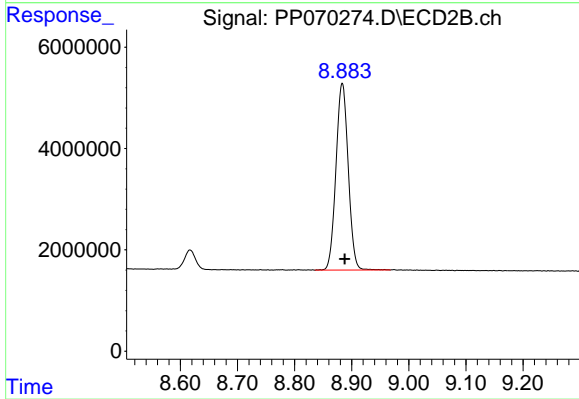
#1 Tetrachloro-m-xylene

R.T.: 3.828 min  
 Delta R.T.: -0.002 min  
 Response: 50410799  
 Conc: 52.73 ng/ml



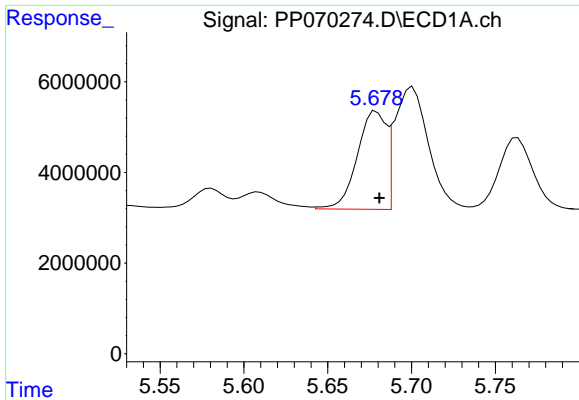
#2 Decachlorobiphenyl

R.T.: 10.252 min  
 Delta R.T.: -0.004 min  
 Response: 57370683  
 Conc: 50.37 ng/ml



#2 Decachlorobiphenyl

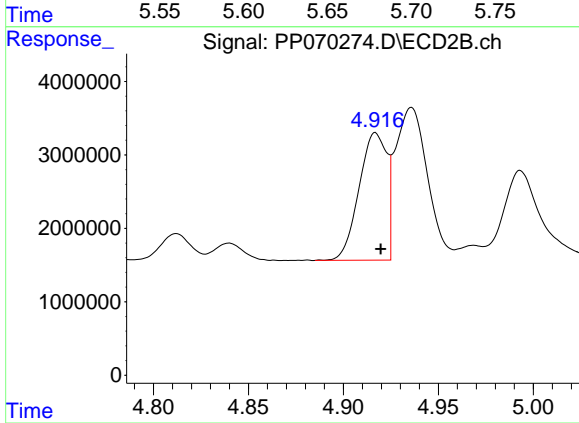
R.T.: 8.883 min  
 Delta R.T.: -0.004 min  
 Response: 55115234  
 Conc: 50.84 ng/ml



#3 AR-1016-1

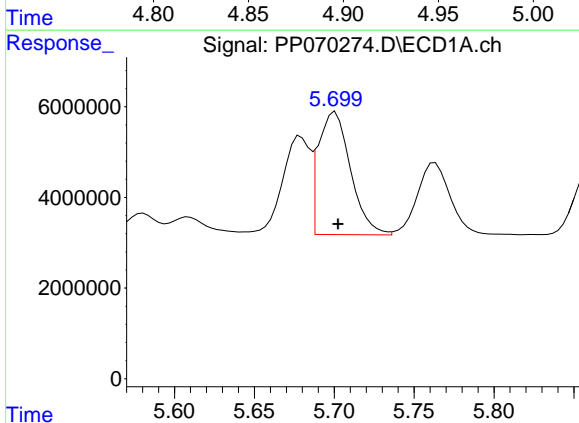
R.T.: 5.679 min  
 Delta R.T.: -0.002 min  
 Response: 25894897  
 Conc: 519.70 ng/ml

Instrument :  
 ECD\_P  
 ClientSampleId :  
 AR1660CCC500



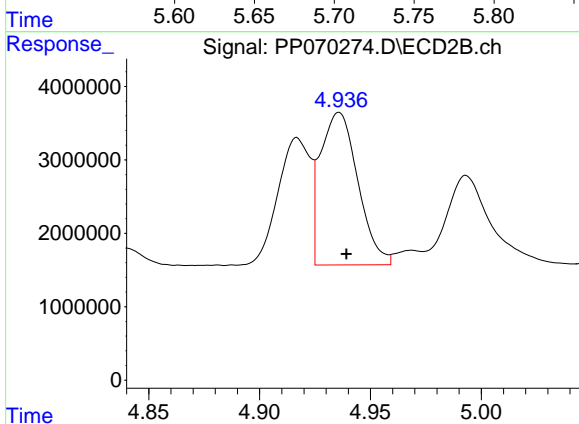
#3 AR-1016-1

R.T.: 4.917 min  
 Delta R.T.: -0.003 min  
 Response: 17637162  
 Conc: 528.08 ng/ml



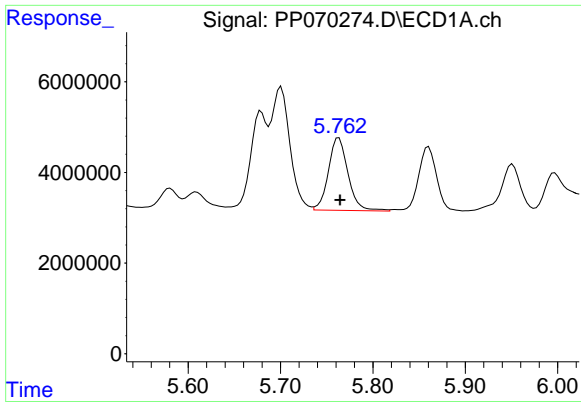
#4 AR-1016-2

R.T.: 5.701 min  
 Delta R.T.: -0.002 min  
 Response: 38156560  
 Conc: 539.10 ng/ml



#4 AR-1016-2

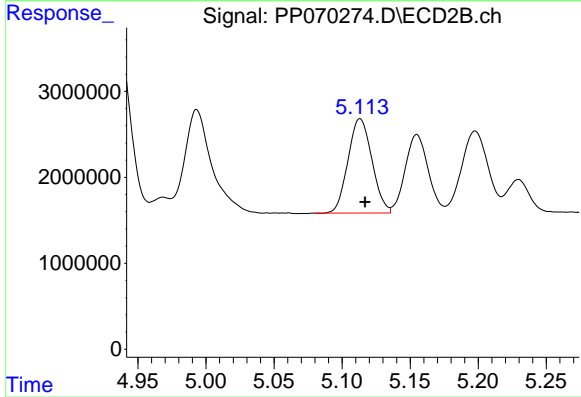
R.T.: 4.936 min  
 Delta R.T.: -0.003 min  
 Response: 24452415  
 Conc: 524.79 ng/ml



#5 AR-1016-3

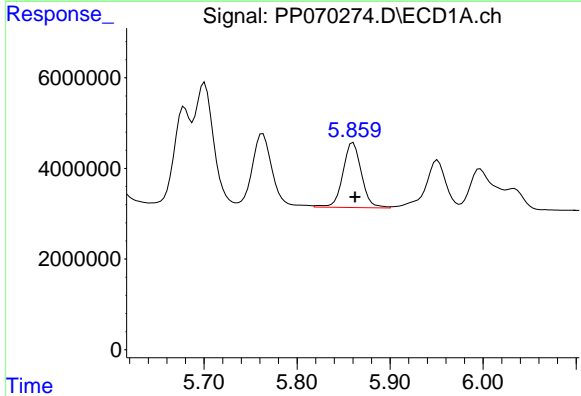
R.T.: 5.763 min  
 Delta R.T.: -0.001 min  
 Response: 23649141  
 Conc: 538.43 ng/ml

Instrument :  
 ECD\_P  
 ClientSampleId :  
 AR1660CCC500



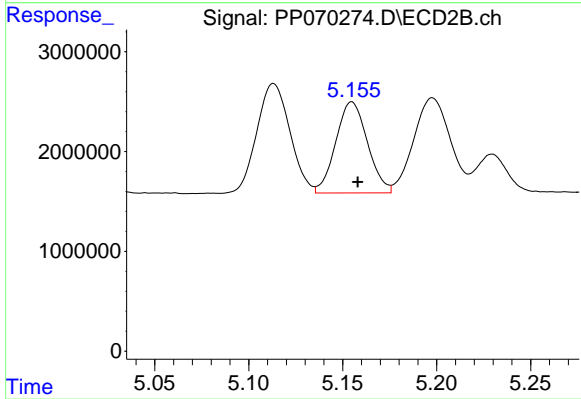
#5 AR-1016-3

R.T.: 5.113 min  
 Delta R.T.: -0.004 min  
 Response: 13433405  
 Conc: 536.64 ng/ml



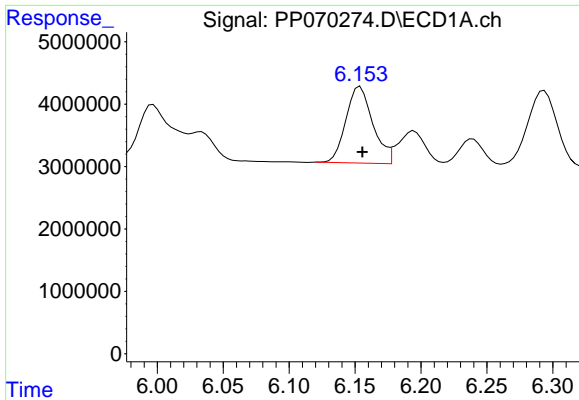
#6 AR-1016-4

R.T.: 5.860 min  
 Delta R.T.: -0.002 min  
 Response: 19874013  
 Conc: 548.08 ng/ml



#6 AR-1016-4

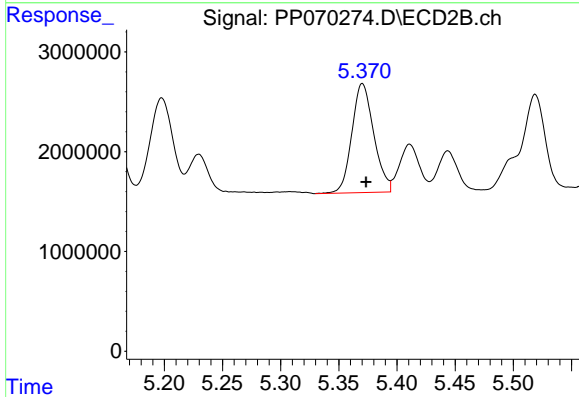
R.T.: 5.155 min  
 Delta R.T.: -0.003 min  
 Response: 10717747  
 Conc: 534.00 ng/ml



#7 AR-1016-5

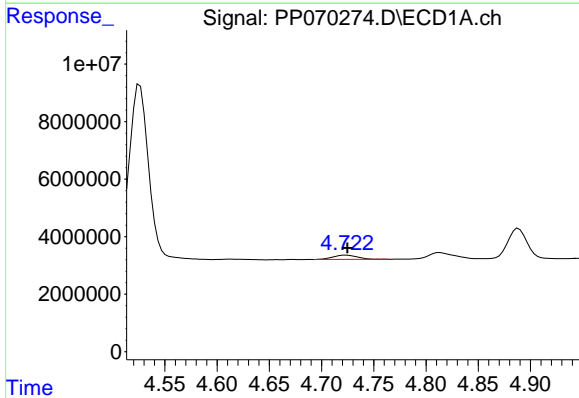
R.T.: 6.154 min  
 Delta R.T.: -0.002 min  
 Response: 17422510  
 Conc: 519.48 ng/ml

Instrument :  
 ECD\_P  
 ClientSampleId :  
 AR1660CCC500



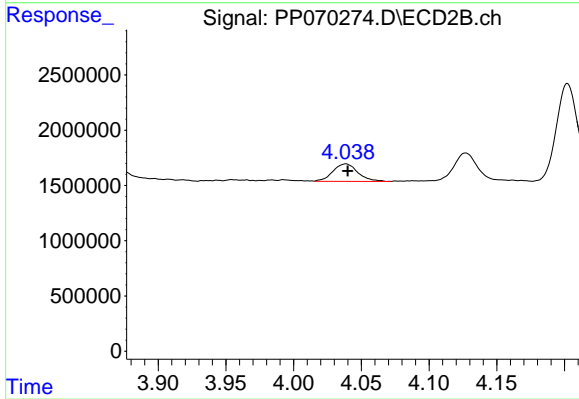
#7 AR-1016-5

R.T.: 5.370 min  
 Delta R.T.: -0.003 min  
 Response: 14360561  
 Conc: 553.47 ng/ml



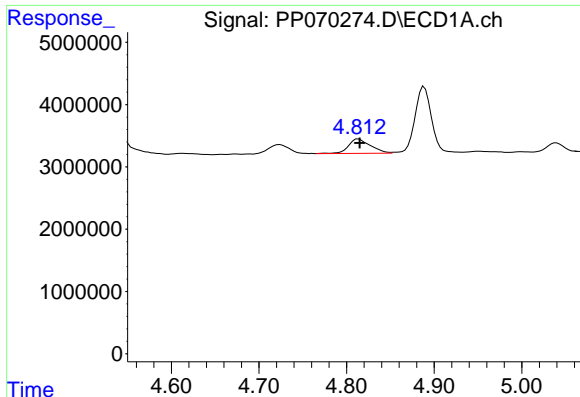
#8 AR-1221-1

R.T.: 4.724 min  
 Delta R.T.: -0.001 min  
 Response: 2416186  
 Conc: 127.73 ng/ml



#8 AR-1221-1

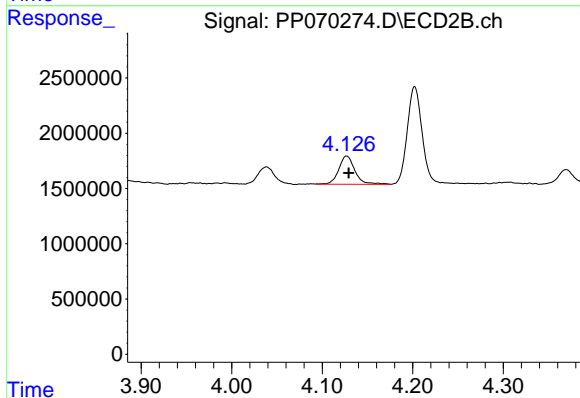
R.T.: 4.038 min  
 Delta R.T.: -0.002 min  
 Response: 2035818  
 Conc: 151.69 ng/ml



#9 AR-1221-2

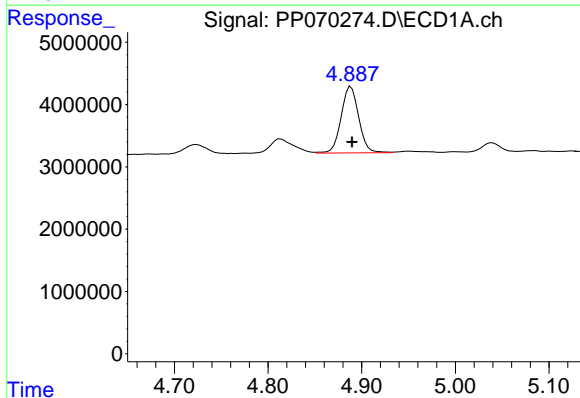
R.T.: 4.813 min  
 Delta R.T.: -0.002 min  
 Response: 4009534  
 Conc: 274.78 ng/ml

Instrument :  
 ECD\_P  
 ClientSampleId :  
 AR1660CCC500



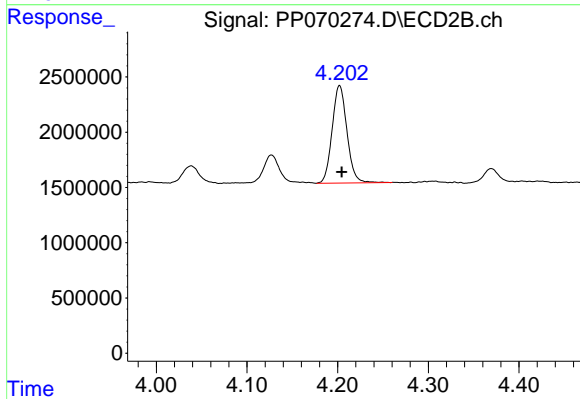
#9 AR-1221-2

R.T.: 4.127 min  
 Delta R.T.: -0.002 min  
 Response: 3153371  
 Conc: 310.18 ng/ml



#10 AR-1221-3

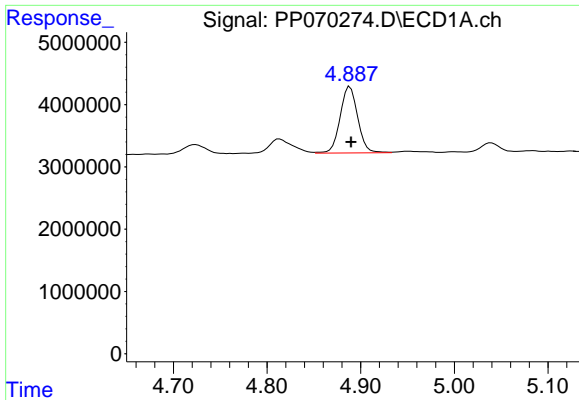
R.T.: 4.889 min  
 Delta R.T.: -0.001 min  
 Response: 13892063  
 Conc: 321.89 ng/ml



#10 AR-1221-3

R.T.: 4.202 min  
 Delta R.T.: -0.003 min  
 Response: 10013508  
 Conc: 329.83 ng/ml

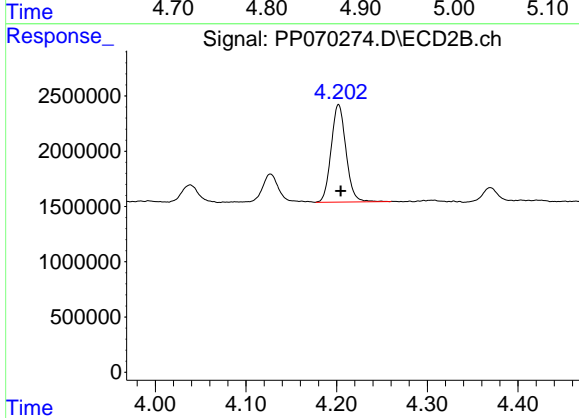




#11 AR-1232-1

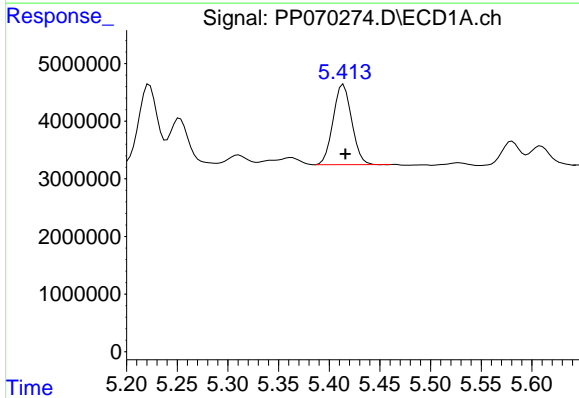
R.T.: 4.889 min  
 Delta R.T.: -0.001 min  
 Response: 13892063  
 Conc: 422.46 ng/ml

Instrument :  
 ECD\_P  
 ClientSampleId :  
 AR1660CCC500



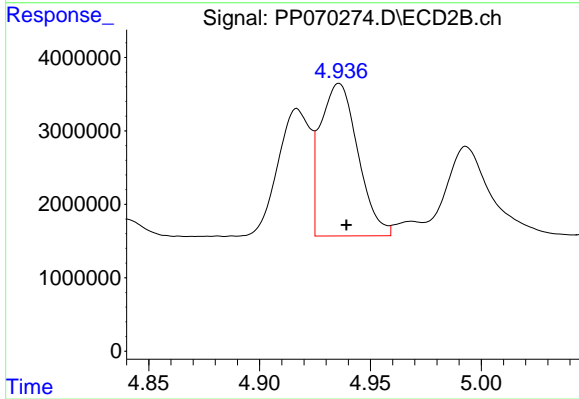
#11 AR-1232-1

R.T.: 4.202 min  
 Delta R.T.: -0.003 min  
 Response: 10013508  
 Conc: 440.31 ng/ml



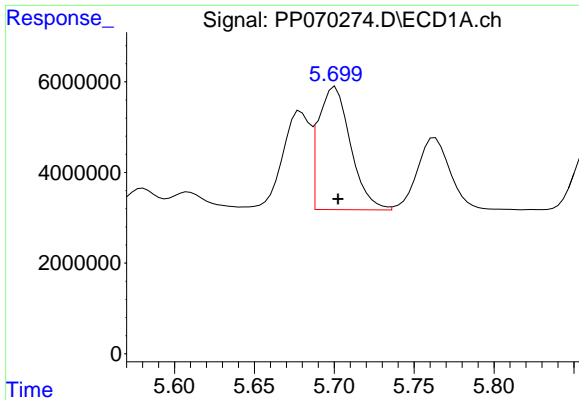
#12 AR-1232-2

R.T.: 5.414 min  
 Delta R.T.: -0.002 min  
 Response: 17734748  
 Conc: 1090.68 ng/ml



#12 AR-1232-2

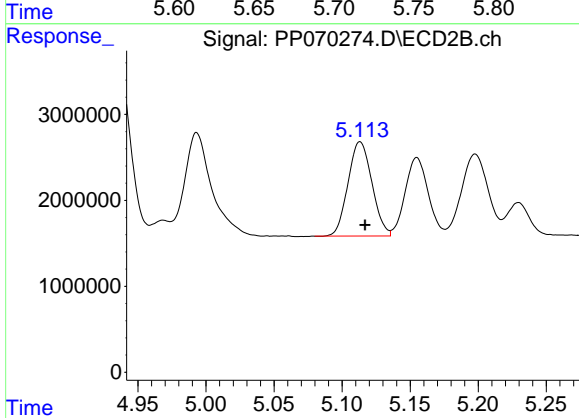
R.T.: 4.936 min  
 Delta R.T.: -0.003 min  
 Response: 24452415  
 Conc: 1070.91 ng/ml



#13 AR-1232-3

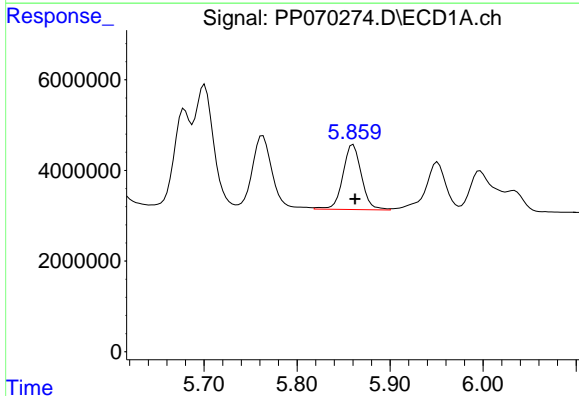
R.T.: 5.701 min  
 Delta R.T.: -0.002 min  
 Response: 38156560  
 Conc: 1094.34 ng/ml

Instrument :  
 ECD\_P  
 ClientSampleId :  
 AR1660CCC500



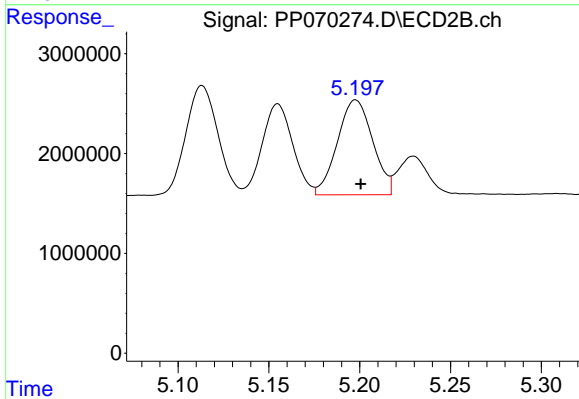
#13 AR-1232-3

R.T.: 5.113 min  
 Delta R.T.: -0.004 min  
 Response: 13433405  
 Conc: 1117.22 ng/ml



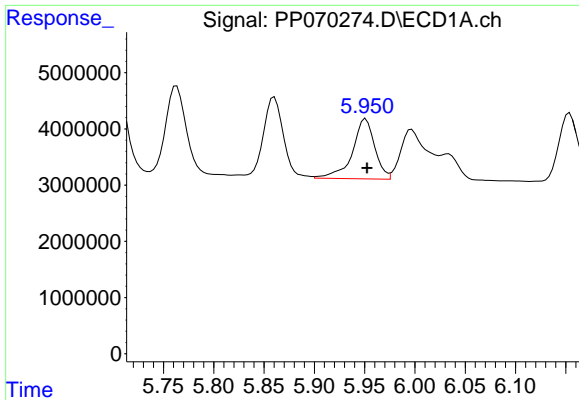
#14 AR-1232-4

R.T.: 5.860 min  
 Delta R.T.: -0.002 min  
 Response: 19874013  
 Conc: 1116.55 ng/ml



#14 AR-1232-4

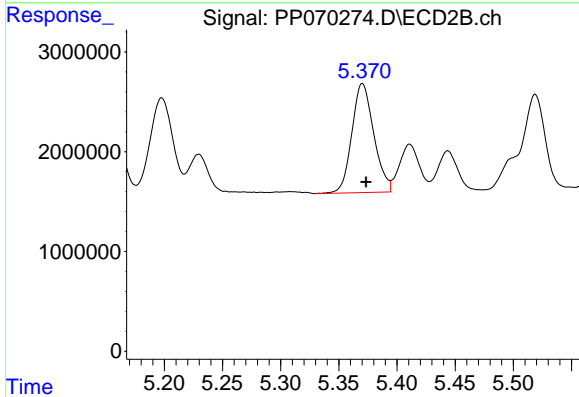
R.T.: 5.198 min  
 Delta R.T.: -0.003 min  
 Response: 12850648  
 Conc: 1182.72 ng/ml



#15 AR-1232-5

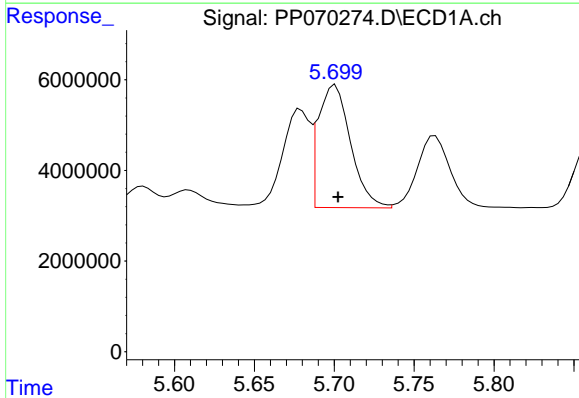
R.T.: 5.951 min  
 Delta R.T.: -0.001 min  
 Response: 16515215  
 Conc: 1309.98 ng/ml

Instrument :  
 ECD\_P  
 ClientSampleId :  
 AR1660CCC500



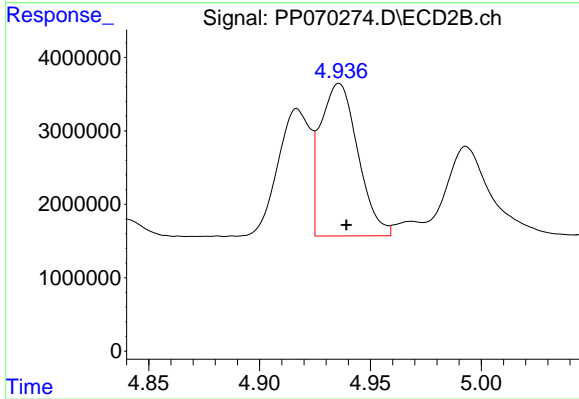
#15 AR-1232-5

R.T.: 5.370 min  
 Delta R.T.: -0.003 min  
 Response: 14360561  
 Conc: 1270.24 ng/ml



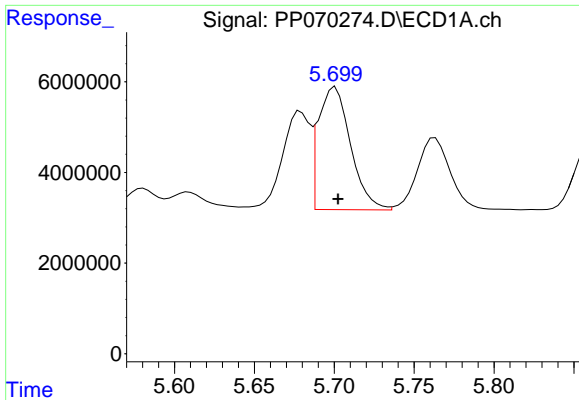
#16 AR-1242-1

R.T.: 5.701 min  
 Delta R.T.: -0.002 min  
 Response: 38156560  
 Conc: 898.75 ng/ml



#16 AR-1242-1

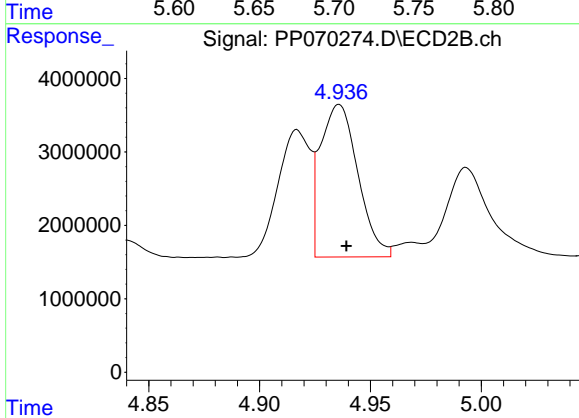
R.T.: 4.936 min  
 Delta R.T.: -0.003 min  
 Response: 24452415  
 Conc: 916.94 ng/ml



#17 AR-1242-2

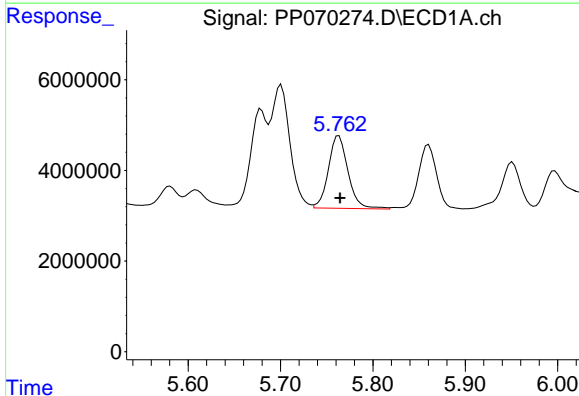
R.T.: 5.701 min  
 Delta R.T.: -0.002 min  
 Response: 38156560  
 Conc: 663.10 ng/ml

Instrument :  
 ECD\_P  
 ClientSampleId :  
 AR1660CCC500



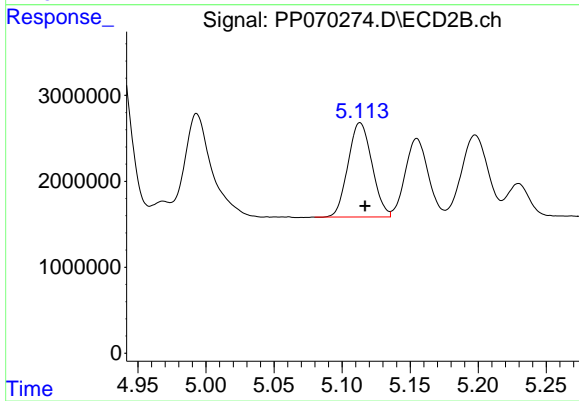
#17 AR-1242-2

R.T.: 4.936 min  
 Delta R.T.: -0.003 min  
 Response: 24452415  
 Conc: 657.30 ng/ml



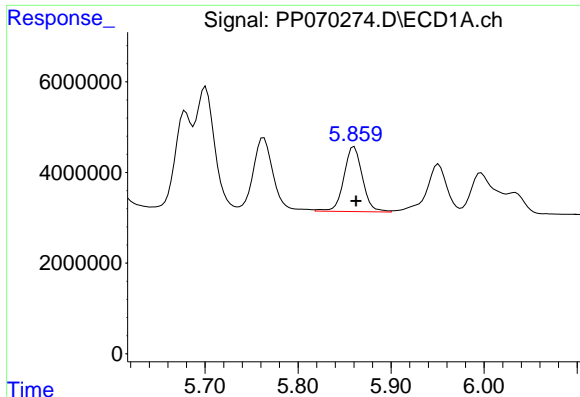
#18 AR-1242-3

R.T.: 5.763 min  
 Delta R.T.: -0.001 min  
 Response: 23649141  
 Conc: 623.57 ng/ml



#18 AR-1242-3

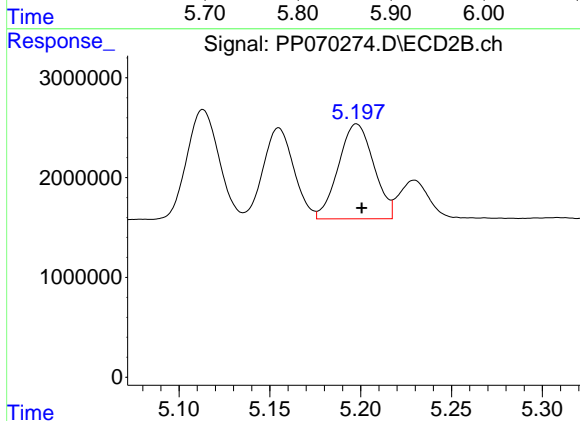
R.T.: 5.113 min  
 Delta R.T.: -0.004 min  
 Response: 13433405  
 Conc: 682.39 ng/ml



#19 AR-1242-4

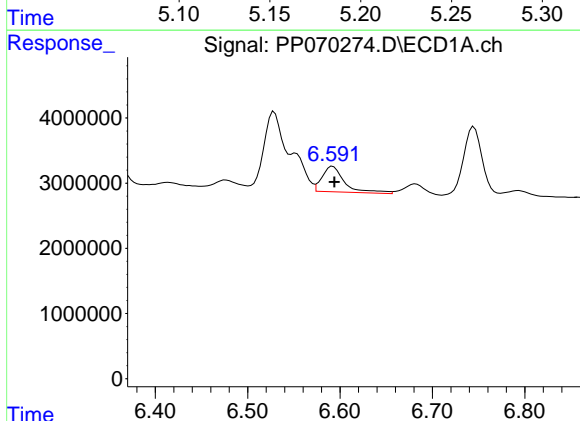
R.T.: 5.860 min  
Delta R.T.: -0.002 min  
Response: 19874013  
Conc: 666.58 ng/ml

Instrument :  
ECD\_P  
ClientSampleId :  
AR1660CCC500



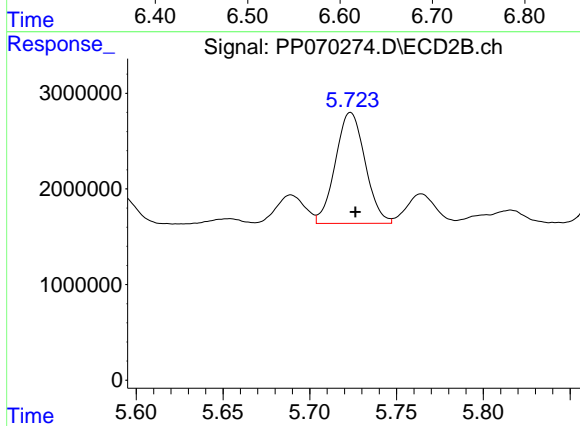
#19 AR-1242-4

R.T.: 5.198 min  
Delta R.T.: -0.003 min  
Response: 12850648  
Conc: 653.81 ng/ml



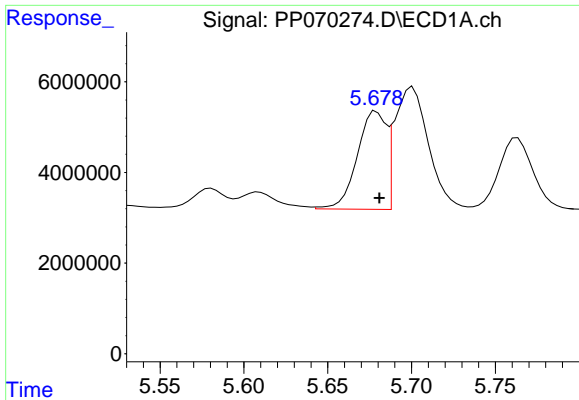
#20 AR-1242-5

R.T.: 6.592 min  
Delta R.T.: -0.002 min  
Response: 6621791  
Conc: 187.93 ng/ml



#20 AR-1242-5

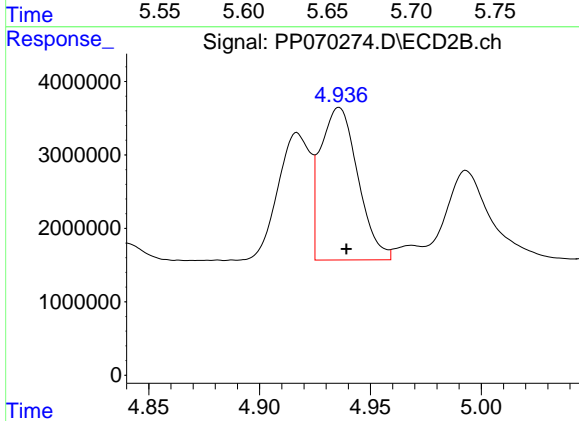
R.T.: 5.724 min  
Delta R.T.: -0.003 min  
Response: 13839178  
Conc: 556.43 ng/ml



#21 AR-1248-1

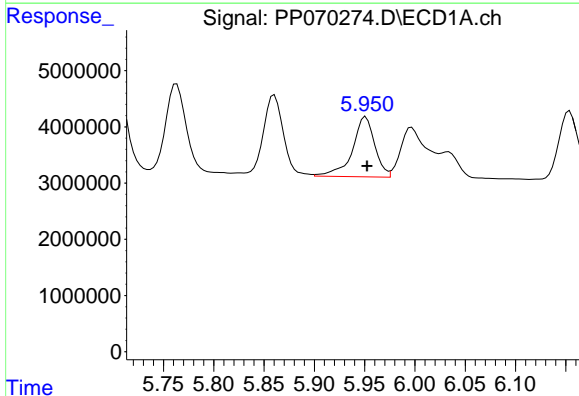
R.T.: 5.679 min  
 Delta R.T.: -0.002 min  
 Response: 25894897  
 Conc: 791.65 ng/ml

Instrument :  
 ECD\_P  
 ClientSampleId :  
 AR1660CCC500



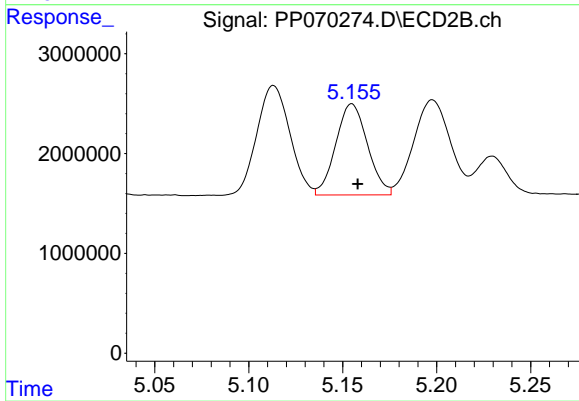
#21 AR-1248-1

R.T.: 4.936 min  
 Delta R.T.: -0.003 min  
 Response: 24452415  
 Conc: 1155.07 ng/ml



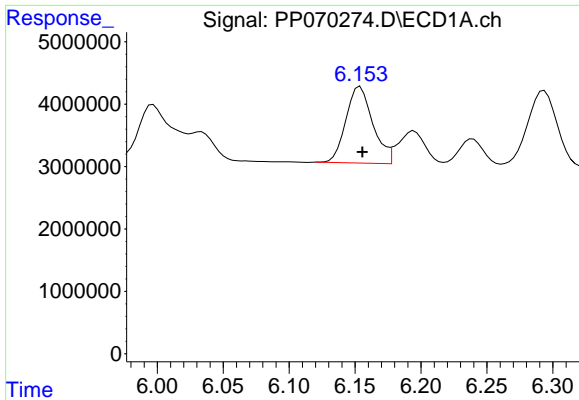
#22 AR-1248-2

R.T.: 5.951 min  
 Delta R.T.: -0.001 min  
 Response: 16515215  
 Conc: 391.80 ng/ml



#22 AR-1248-2

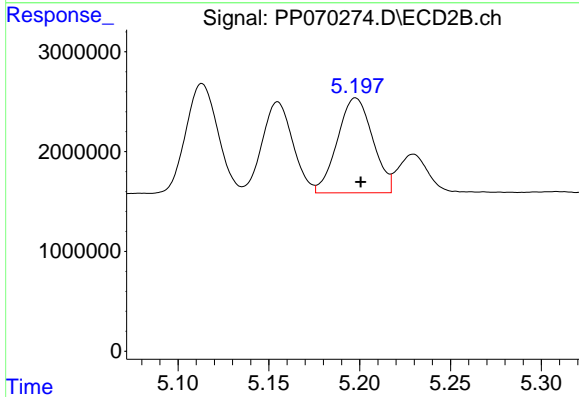
R.T.: 5.155 min  
 Delta R.T.: -0.003 min  
 Response: 10717747  
 Conc: 379.36 ng/ml



#23 AR-1248-3

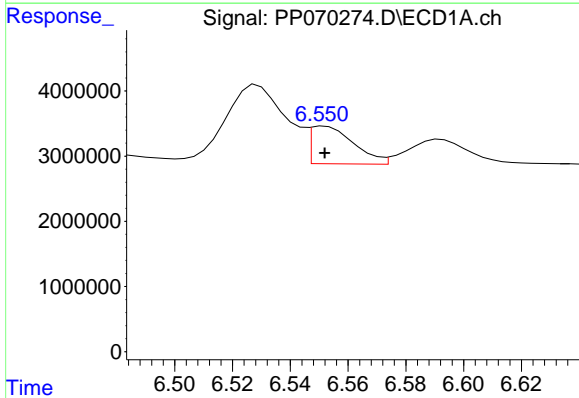
R.T.: 6.154 min  
 Delta R.T.: -0.002 min  
 Response: 17422510  
 Conc: 385.69 ng/ml

Instrument :  
 ECD\_P  
 ClientSampleId :  
 AR1660CCC500



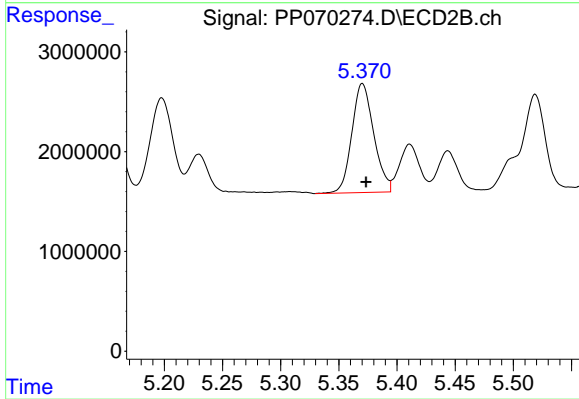
#23 AR-1248-3

R.T.: 5.198 min  
 Delta R.T.: -0.003 min  
 Response: 12850648  
 Conc: 431.87 ng/ml



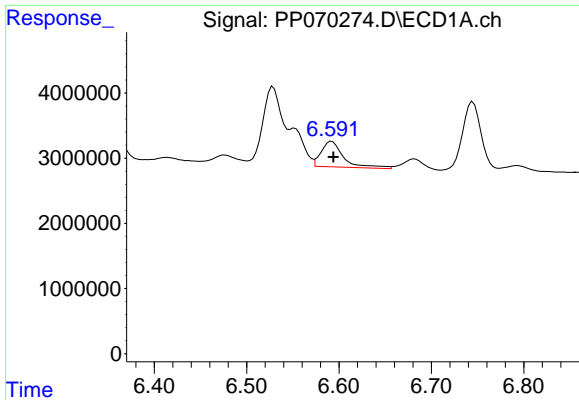
#24 AR-1248-4

R.T.: 6.552 min  
 Delta R.T.: 0.000 min  
 Response: 6051905  
 Conc: 102.64 ng/ml



#24 AR-1248-4

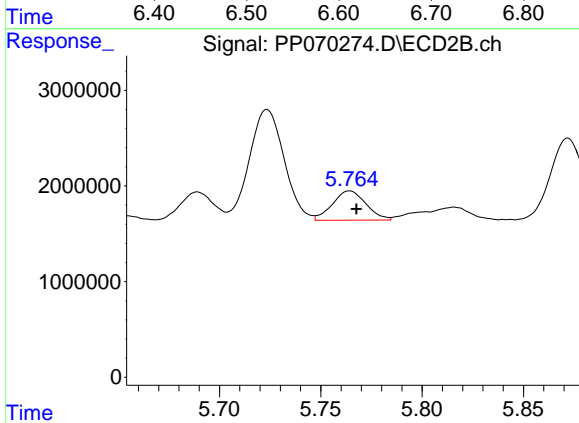
R.T.: 5.370 min  
 Delta R.T.: -0.003 min  
 Response: 14360561  
 Conc: 408.60 ng/ml



#25 AR-1248-5

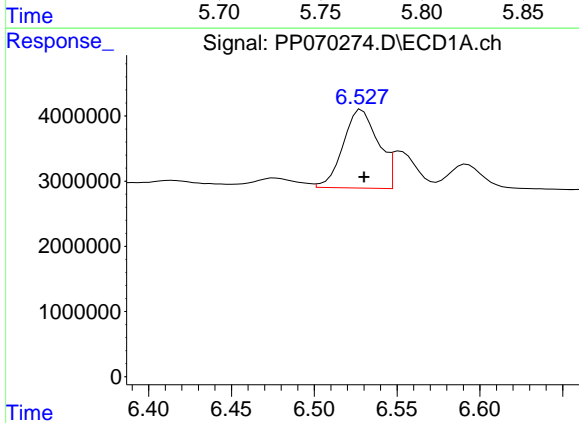
R.T.: 6.592 min  
 Delta R.T.: -0.002 min  
 Response: 6621791  
 Conc: 115.79 ng/ml

Instrument :  
 ECD\_P  
 ClientSampleId :  
 AR1660CCC500



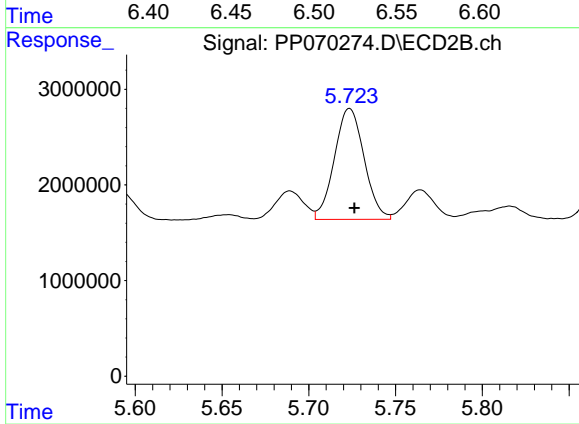
#25 AR-1248-5

R.T.: 5.764 min  
 Delta R.T.: -0.003 min  
 Response: 3527883  
 Conc: 97.54 ng/ml



#26 AR-1254-1

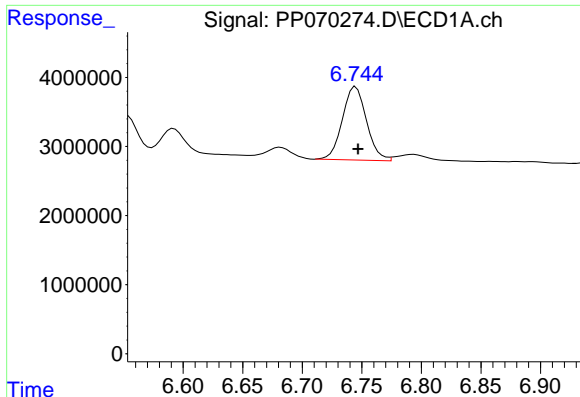
R.T.: 6.529 min  
 Delta R.T.: -0.001 min  
 Response: 17623805  
 Conc: 310.82 ng/ml



#26 AR-1254-1

R.T.: 5.724 min  
 Delta R.T.: -0.003 min  
 Response: 13839178  
 Conc: 253.61 ng/ml

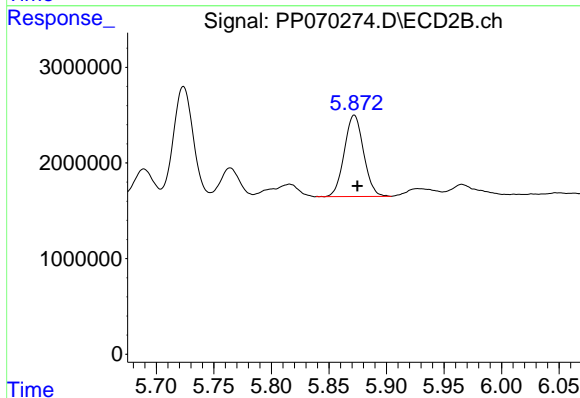




#27 AR-1254-2

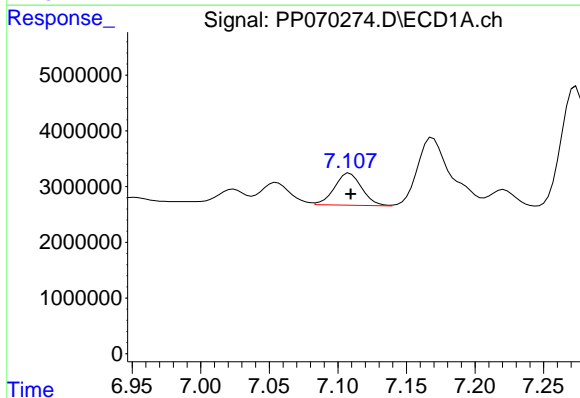
R.T.: 6.745 min  
 Delta R.T.: -0.002 min  
 Response: 14974402  
 Conc: 170.77 ng/ml

Instrument :  
 ECD\_P  
 ClientSampleId :  
 AR1660CCC500



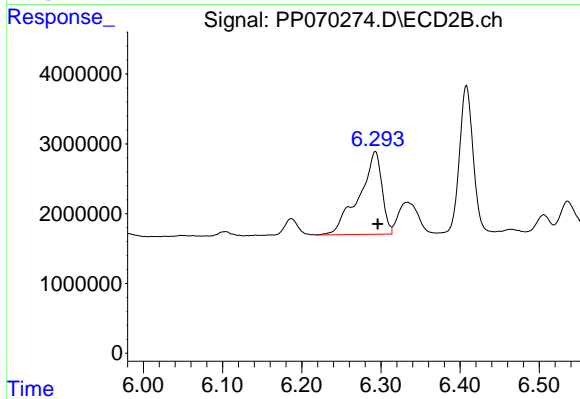
#27 AR-1254-2

R.T.: 5.872 min  
 Delta R.T.: -0.003 min  
 Response: 9983669  
 Conc: 204.81 ng/ml



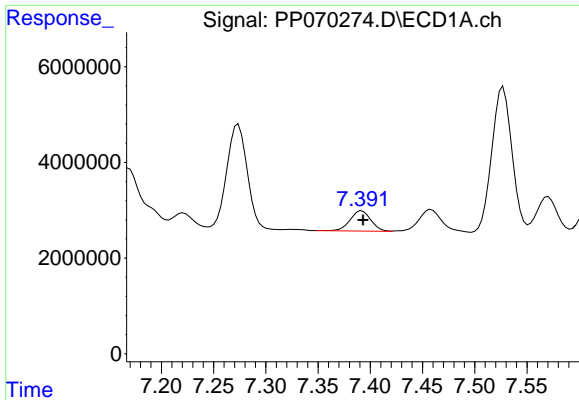
#28 AR-1254-3

R.T.: 7.109 min  
 Delta R.T.: 0.000 min  
 Response: 7987341  
 Conc: 89.62 ng/ml



#28 AR-1254-3

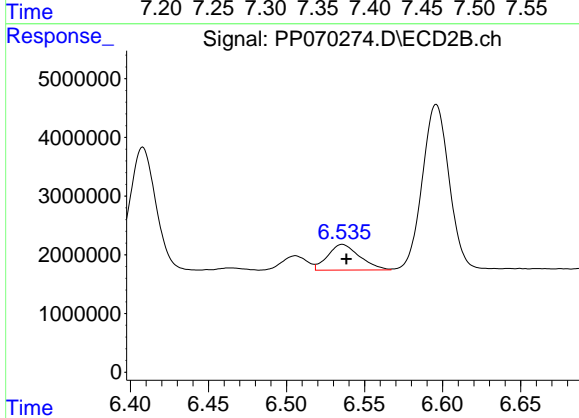
R.T.: 6.293 min  
 Delta R.T.: -0.003 min  
 Response: 23817540  
 Conc: 314.15 ng/ml



#29 AR-1254-4

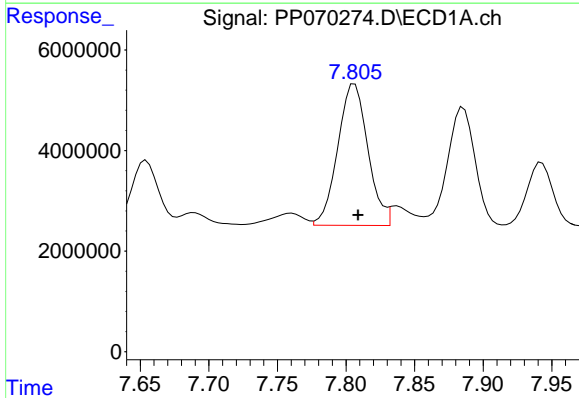
R.T.: 7.392 min  
 Delta R.T.: -0.001 min  
 Response: 5862527  
 Conc: 78.68 ng/ml

Instrument :  
 ECD\_P  
 ClientSampleId :  
 AR1660CCC500



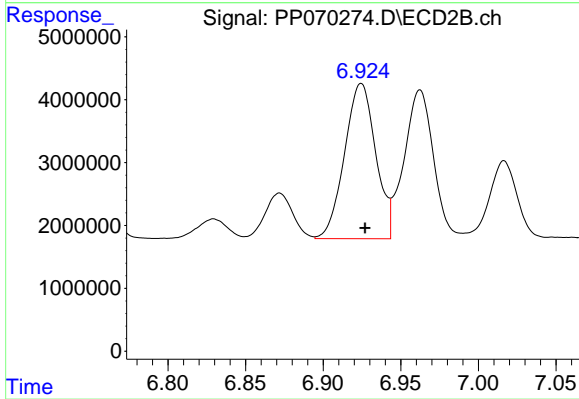
#29 AR-1254-4

R.T.: 6.536 min  
 Delta R.T.: -0.003 min  
 Response: 6221320  
 Conc: 120.90 ng/ml



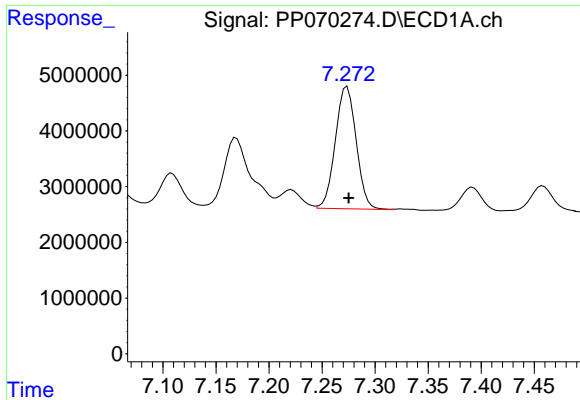
#30 AR-1254-5

R.T.: 7.806 min  
 Delta R.T.: -0.003 min  
 Response: 43090299  
 Conc: 641.58 ng/ml



#30 AR-1254-5

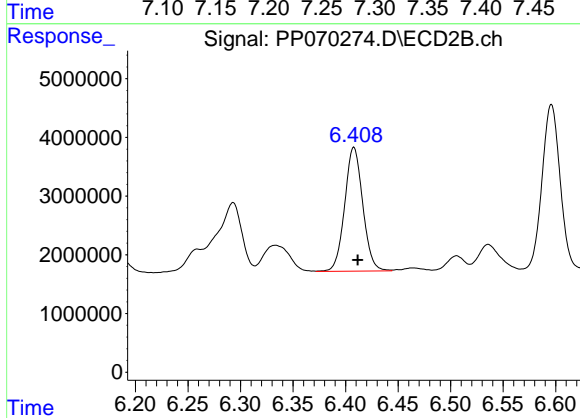
R.T.: 6.925 min  
 Delta R.T.: -0.003 min  
 Response: 34510946  
 Conc: 510.75 ng/ml



#31 AR-1260-1

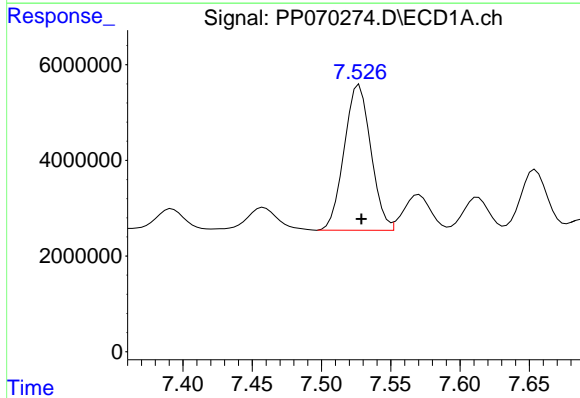
R.T.: 7.274 min  
 Delta R.T.: -0.001 min  
 Response: 30020545  
 Conc: 514.40 ng/ml

Instrument :  
 ECD\_P  
 ClientSampleId :  
 AR1660CCC500



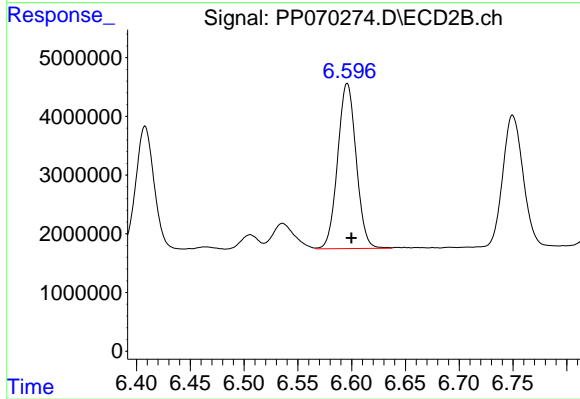
#31 AR-1260-1

R.T.: 6.408 min  
 Delta R.T.: -0.004 min  
 Response: 25277974  
 Conc: 510.26 ng/ml



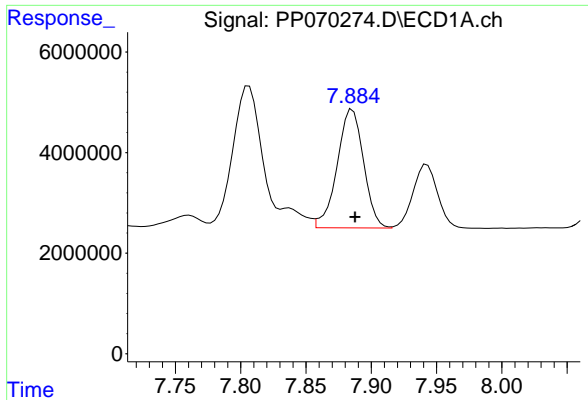
#32 AR-1260-2

R.T.: 7.527 min  
 Delta R.T.: -0.001 min  
 Response: 40825247  
 Conc: 499.54 ng/ml



#32 AR-1260-2

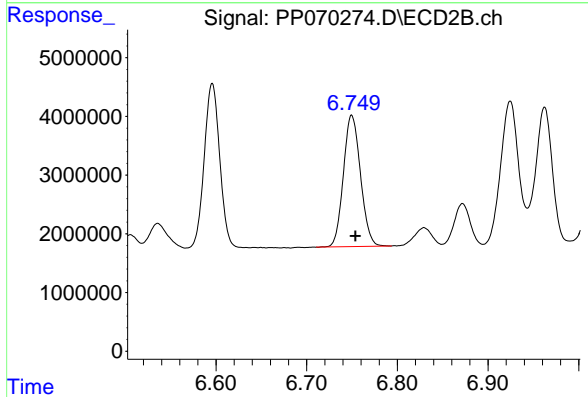
R.T.: 6.596 min  
 Delta R.T.: -0.004 min  
 Response: 33658104  
 Conc: 514.49 ng/ml



#33 AR-1260-3

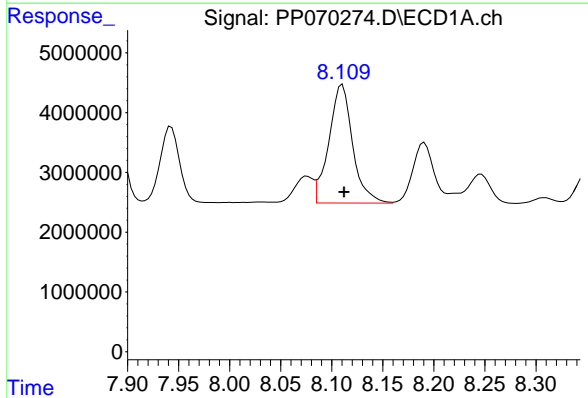
R.T.: 7.886 min  
 Delta R.T.: -0.002 min  
 Response: 33224750  
 Conc: 529.38 ng/ml

Instrument :  
 ECD\_P  
 ClientSampleId :  
 AR1660CCC500



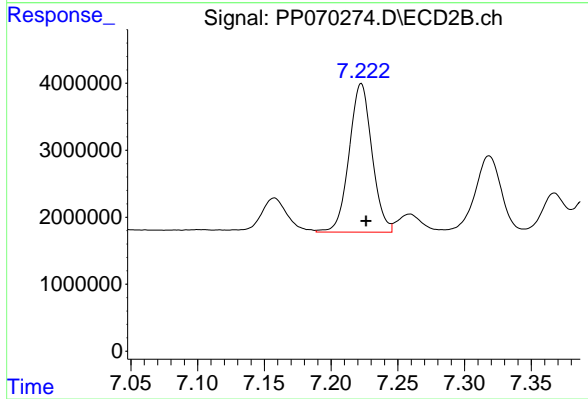
#33 AR-1260-3

R.T.: 6.750 min  
 Delta R.T.: -0.004 min  
 Response: 29291596  
 Conc: 485.59 ng/ml



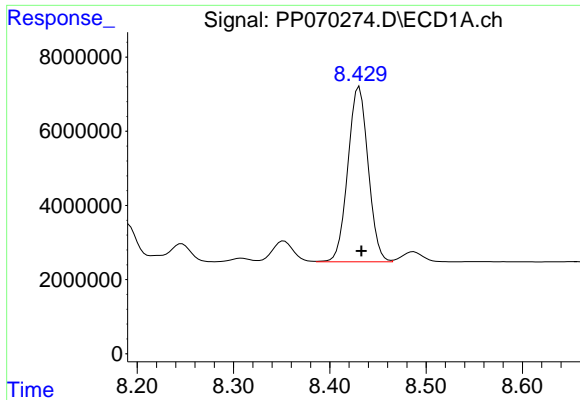
#34 AR-1260-4

R.T.: 8.110 min  
 Delta R.T.: -0.002 min  
 Response: 32050442  
 Conc: 505.52 ng/ml



#34 AR-1260-4

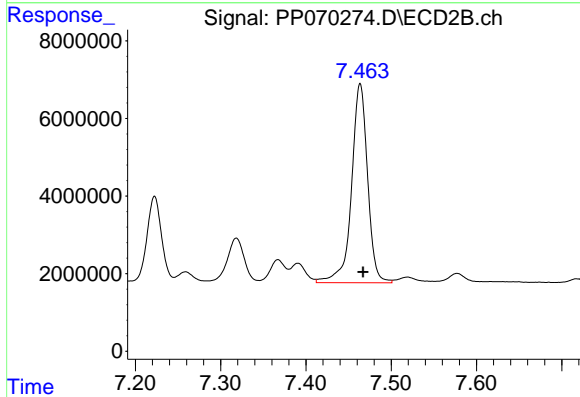
R.T.: 7.223 min  
 Delta R.T.: -0.004 min  
 Response: 26472099  
 Conc: 541.71 ng/ml



#35 AR-1260-5

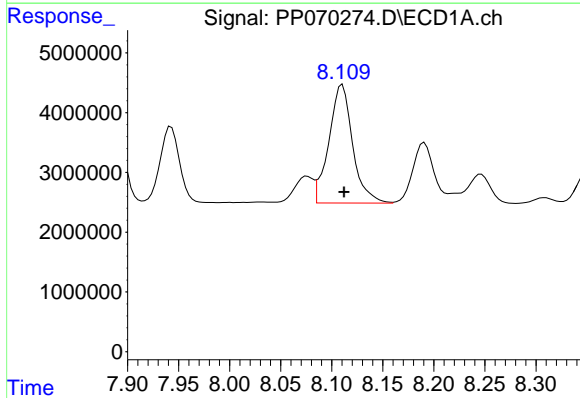
R.T.: 8.431 min  
 Delta R.T.: -0.002 min  
 Response: 68941760  
 Conc: 525.53 ng/ml

Instrument :  
 ECD\_P  
 ClientSampleId :  
 AR1660CCC500



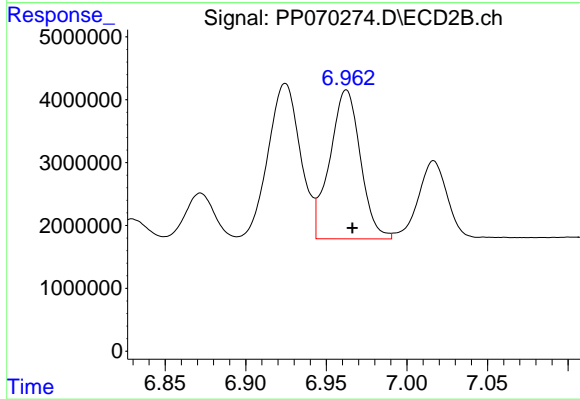
#35 AR-1260-5

R.T.: 7.464 min  
 Delta R.T.: -0.003 min  
 Response: 67274035  
 Conc: 564.50 ng/ml



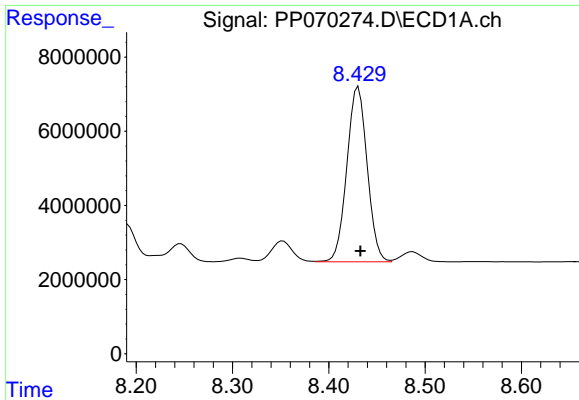
#36 AR-1262-1

R.T.: 8.110 min  
 Delta R.T.: -0.002 min  
 Response: 32050442  
 Conc: 397.01 ng/ml



#36 AR-1262-1

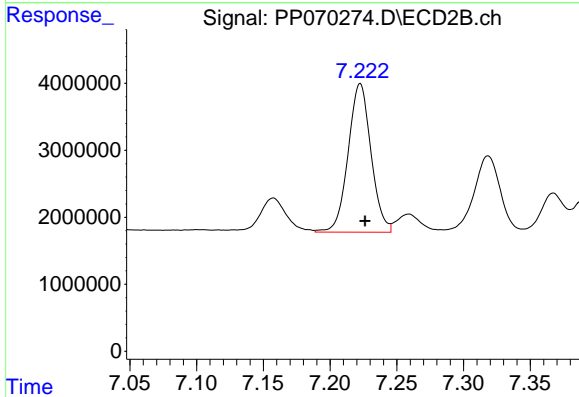
R.T.: 6.962 min  
 Delta R.T.: -0.004 min  
 Response: 31330798  
 Conc: 375.33 ng/ml



#37 AR-1262-2

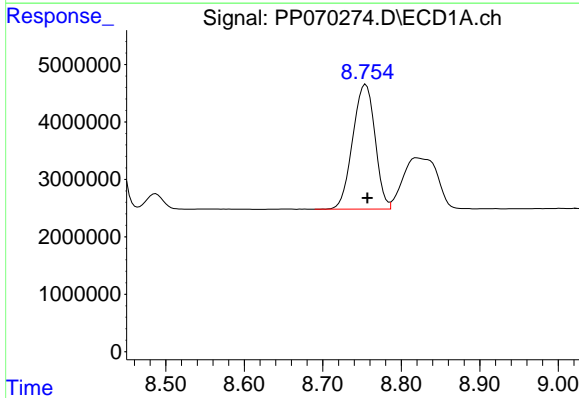
R.T.: 8.431 min  
 Delta R.T.: -0.002 min  
 Response: 68941760  
 Conc: 427.98 ng/ml

Instrument :  
 ECD\_P  
 ClientSampleId :  
 AR1660CCC500



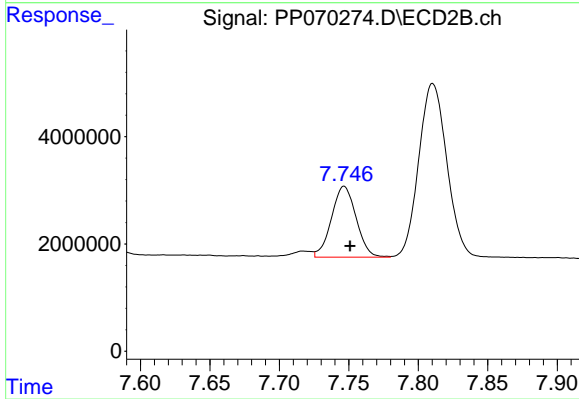
#37 AR-1262-2

R.T.: 7.223 min  
 Delta R.T.: -0.004 min  
 Response: 26472099  
 Conc: 399.33 ng/ml



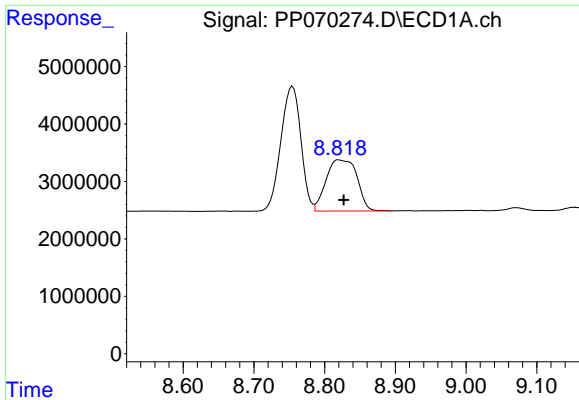
#38 AR-1262-3

R.T.: 8.755 min  
 Delta R.T.: -0.002 min  
 Response: 42891196  
 Conc: 387.76 ng/ml



#38 AR-1262-3

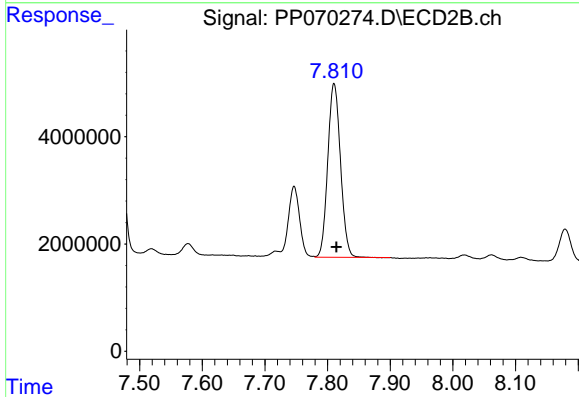
R.T.: 7.747 min  
 Delta R.T.: -0.004 min  
 Response: 16363448  
 Conc: 270.11 ng/ml



#39 AR-1262-4

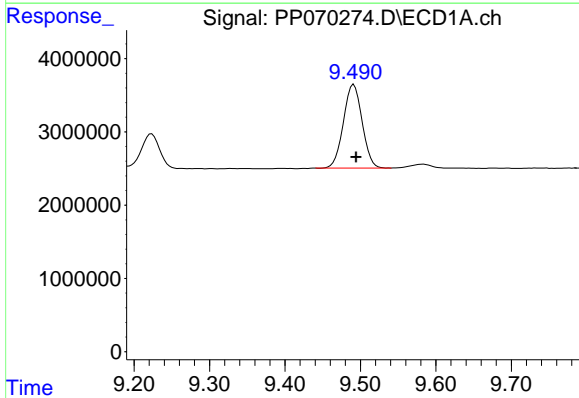
R.T.: 8.820 min  
 Delta R.T.: -0.007 min  
 Response: 27182428  
 Conc: 323.93 ng/ml

Instrument :  
 ECD\_P  
 ClientSampleId :  
 AR1660CCC500



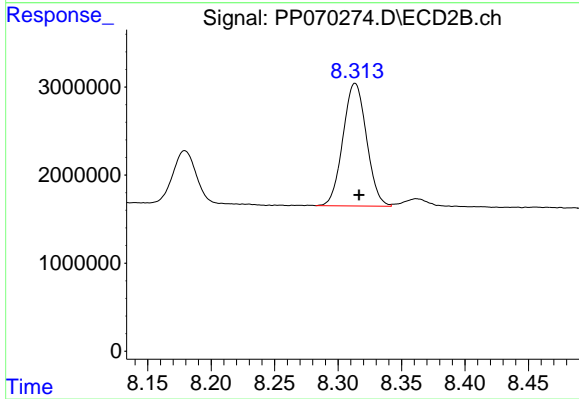
#39 AR-1262-4

R.T.: 7.810 min  
 Delta R.T.: -0.004 min  
 Response: 45666696  
 Conc: 432.97 ng/ml



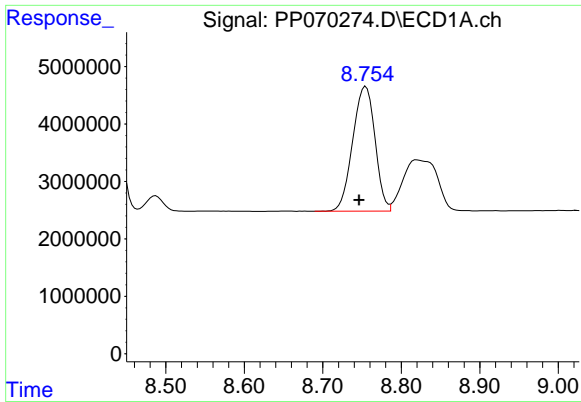
#40 AR-1262-5

R.T.: 9.491 min  
 Delta R.T.: -0.003 min  
 Response: 19731140  
 Conc: 335.54 ng/ml



#40 AR-1262-5

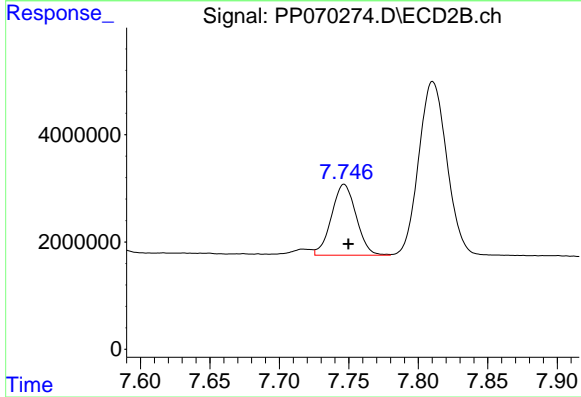
R.T.: 8.313 min  
 Delta R.T.: -0.003 min  
 Response: 18011368  
 Conc: 346.84 ng/ml



#41 AR-1268-1

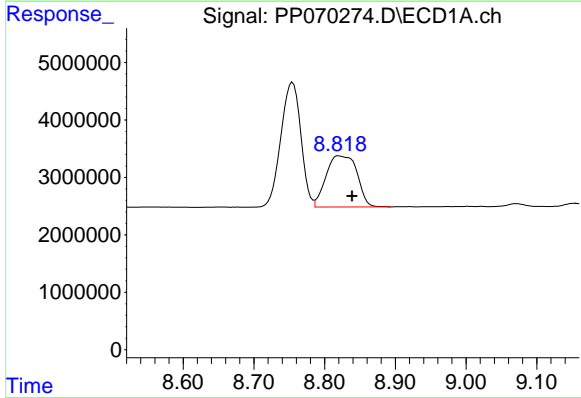
R.T.: 8.755 min  
 Delta R.T.: 0.009 min  
 Response: 42891196  
 Conc: 223.28 ng/ml

Instrument :  
 ECD\_P  
 ClientSampleId :  
 AR1660CCC500



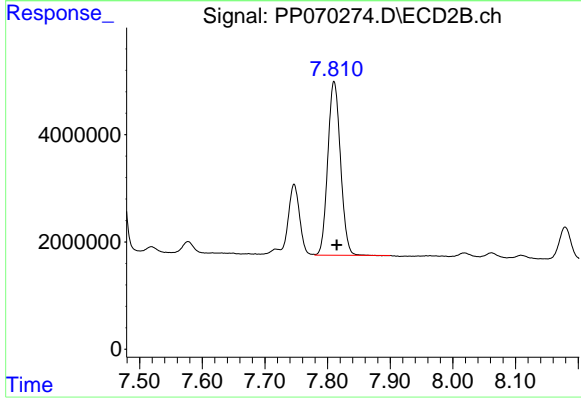
#41 AR-1268-1

R.T.: 7.747 min  
 Delta R.T.: -0.003 min  
 Response: 16363448  
 Conc: 98.72 ng/ml



#42 AR-1268-2

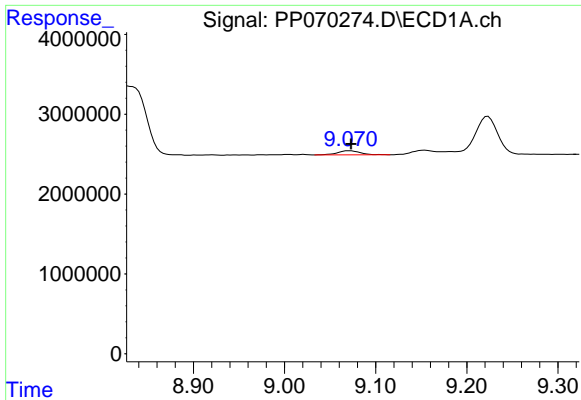
R.T.: 8.820 min  
 Delta R.T.: -0.019 min  
 Response: 27182428  
 Conc: 164.16 ng/ml



#42 AR-1268-2

R.T.: 7.810 min  
 Delta R.T.: -0.005 min  
 Response: 45666696  
 Conc: 314.85 ng/ml

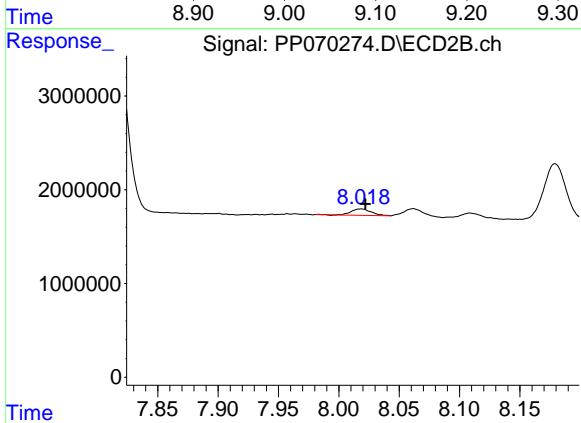




#43 AR-1268-3

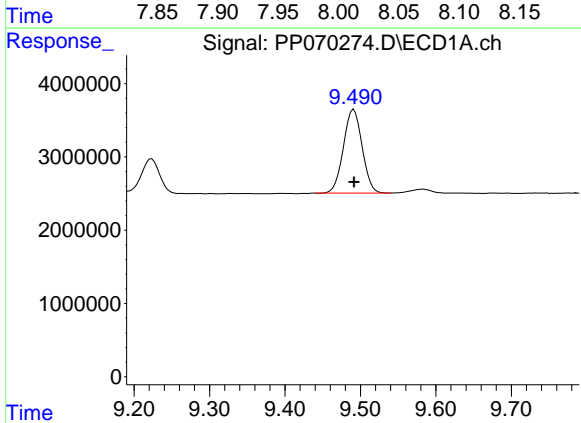
R.T.: 9.072 min  
 Delta R.T.: -0.001 min  
 Response: 891749  
 Conc: 6.21 ng/ml

Instrument :  
 ECD\_P  
 ClientSampleId :  
 AR1660CCC500



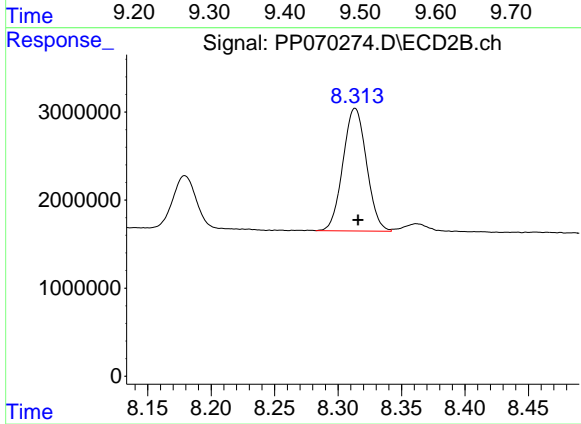
#43 AR-1268-3

R.T.: 8.018 min  
 Delta R.T.: -0.004 min  
 Response: 802190  
 Conc: 6.55 ng/ml



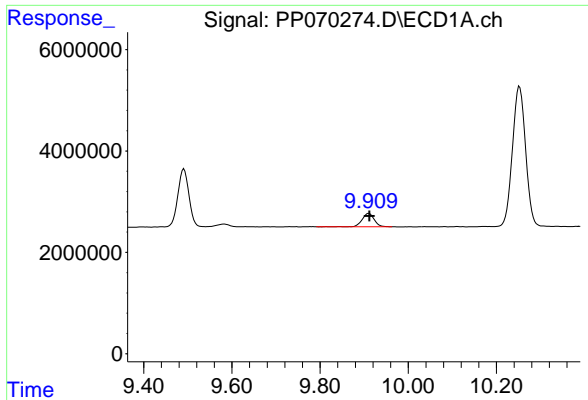
#44 AR-1268-4

R.T.: 9.491 min  
 Delta R.T.: 0.000 min  
 Response: 19731140  
 Conc: 312.95 ng/ml



#44 AR-1268-4

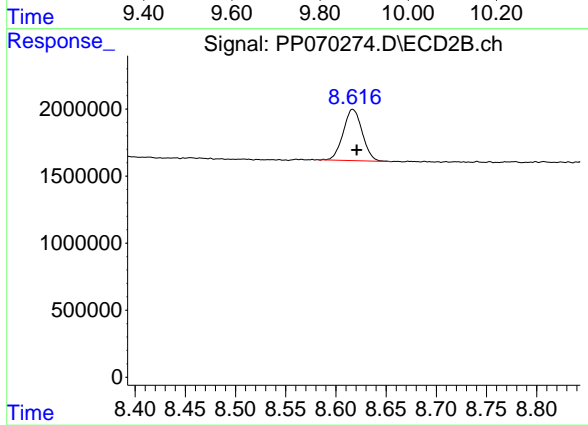
R.T.: 8.313 min  
 Delta R.T.: -0.002 min  
 Response: 18011368  
 Conc: 338.65 ng/ml



#45 AR-1268-5

R.T.: 9.911 min  
 Delta R.T.: 0.000 min  
 Response: 5014722  
 Conc: 12.06 ng/ml

Instrument :  
 ECD\_P  
 ClientSampleId :  
 AR1660CCC500



#45 AR-1268-5

R.T.: 8.617 min  
 Delta R.T.: -0.004 min  
 Response: 5065230  
 Conc: 14.26 ng/ml