

Data Path : Z:\pestpcbsrv\HPCHEM1\ECD_P\Data\PP030921\
 Data File : PP033789.D
 Signal(s) : Signal #1: ECD1A.CH Signal #2: ECD2B.CH
 Acq On : 10 Mar 2021 4:05
 Operator : DD\AJ
 Sample : M1458-07
 Misc : AR1232 LOD 40 PPB
 ALS Vial : 45 Sample Multiplier: 1

Instrument :
 ECD_P
 ClientSampled :

Integration File signal 1: autoint1.e
 Integration File signal 2: autoint2.e
 Quant Time: Mar 10 06:01:01 2021
 Quant Method : Z:\pestpcbsrv\HPCHEM1\ECD_P\methods\PP030921.M
 Quant Title : GC EXTRACTABLES
 QLast Update : Wed Mar 10 03:01:34 2021
 Response via : Initial Calibration
 Integrator: ChemStation 6890 Scale Mode: Small noise peaks clipped

Volume Inj. : 2 µl
 Signal #1 Phase : ZB-MR1 Signal #2 Phase: ZB-MR2
 Signal #1 Info : 30Mx0.32mmx 0.50µ Signal #2 Info : 30M x 0.32mm x 0.25µm

Compound	RT#1	RT#2	Resp#1	Resp#2	ng/ml	ng/ml
System Monitoring Compounds						
1) SA Tetrachlo...	4.857	4.270	1721751	819555	19.899	20.173
2) SA Decachlor...	10.782	9.599	1709848	573282	20.246	21.483
Target Compounds						
3) L1 AR-1016-1	6.169	5.528	46595	18944	17.490	16.645
4) L1 AR-1016-2	6.193	5.549	69401	28411	17.171	17.187
5) L1 AR-1016-3	6.258	5.741	52988	15695	21.413	17.128
6) L1 AR-1016-4	6.365	5.791	35389	10240	17.361	14.181
7) L1 AR-1016-5	6.677	6.021	26158	10926	12.905	11.817
8) L2 AR-1221-1	5.109	0.000	45784	0	49.615	N.D. #
9) L2 AR-1221-2	5.204	4.627	38199	18691	54.362	57.765
10) L2 AR-1221-3	5.290	4.716	74678	32194	35.480	32.844
11) L3 AR-1232-1	5.290	4.716	74678	32194	43.164	39.628
12) L3 AR-1232-2	5.876	5.549	38727	28411	42.285	39.205
13) L3 AR-1232-3	6.193	5.741	69401	15695	41.060	40.812
14) L3 AR-1232-4	6.365	5.836	35389	10806	41.427	32.399
15) L3 AR-1232-5	6.464	6.021	27674	10926	46.649	30.148 #
16) L4 AR-1242-1	6.169	5.528	46595	18944	22.964	21.454
17) L4 AR-1242-2	6.193	5.549	69401	28411	22.857	22.653
18) L4 AR-1242-3	6.258	5.741	52988	15695	27.733	22.226
19) L4 AR-1242-4	6.365	5.836	35389	10806	22.753	15.783 #
20) L4 AR-1242-5	7.143	6.399	31699	14307	19.747	17.897
21) L5 AR-1248-1	6.169	5.528	46595	18944	29.869	27.830
22) L5 AR-1248-2	6.464	5.791	27674	10240	13.001	10.914
23) L5 AR-1248-3	6.677	5.836	26158	10806	10.148	10.732
24) L5 AR-1248-4	7.106	6.021	29249	10926	10.572	9.332
25) L5 AR-1248-5	7.143	6.442	31699	11926	11.623	11.072
26) L6 AR-1254-1	7.076	6.399	18276	14307	6.410	8.696 #
27) L6 AR-1254-2	7.309	0.000	35629	0	8.116	N.D. #
28) L6 AR-1254-3	7.699	0.000	36660	0	7.726	N.D. #
34) L7 AR-1260-4	0.000	7.928f	0	21173	N.D.	14.397 #
35) L7 AR-1260-5	9.036	0.000	51187	0	6.617	N.D. #
37) L8 AR-1262-2	9.036	0.000	51187	0	5.922	N.D. #
40) L8 AR-1262-5	10.050f	0.000	535356	0	162.656	N.D. #
44) L9 AR-1268-4	10.050f	0.000	535356	0	153.726	N.D. #
45) L9 AR-1268-5	0.000	9.335	0	49457	N.D.	5.409 #

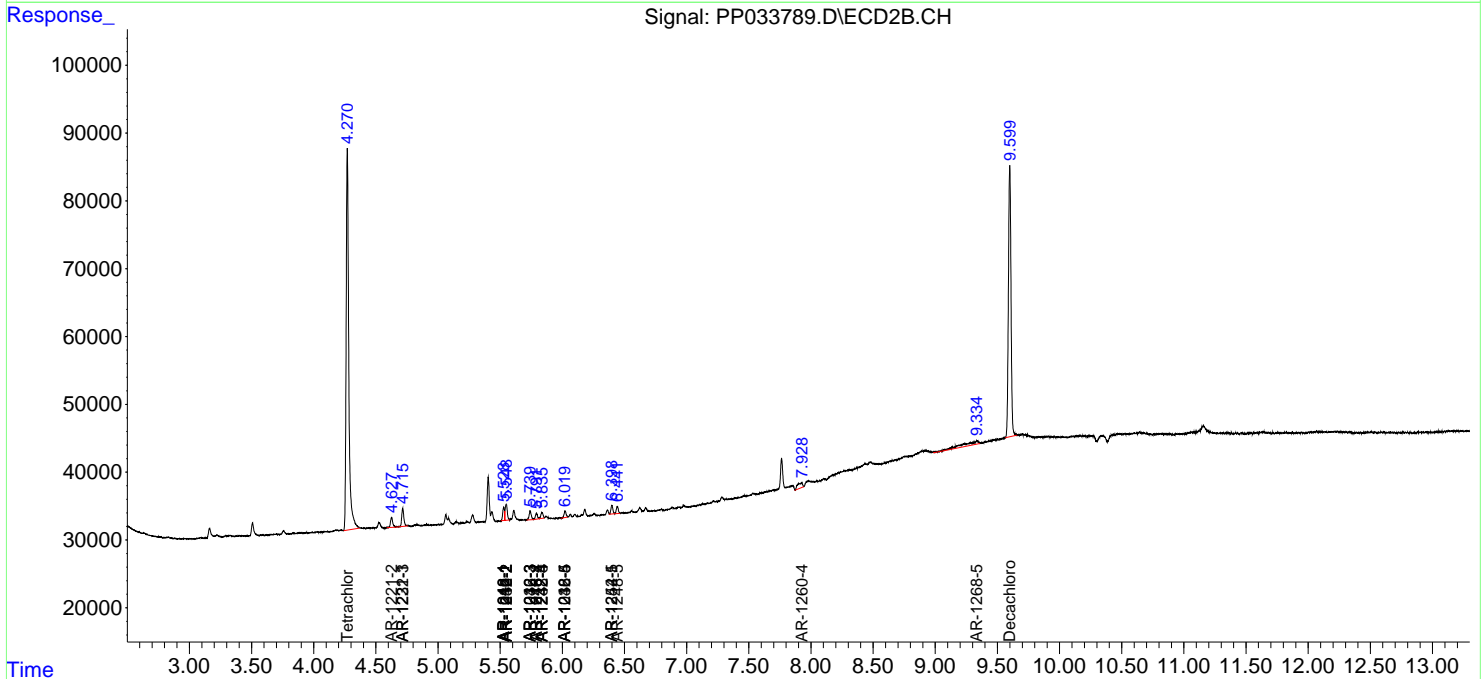
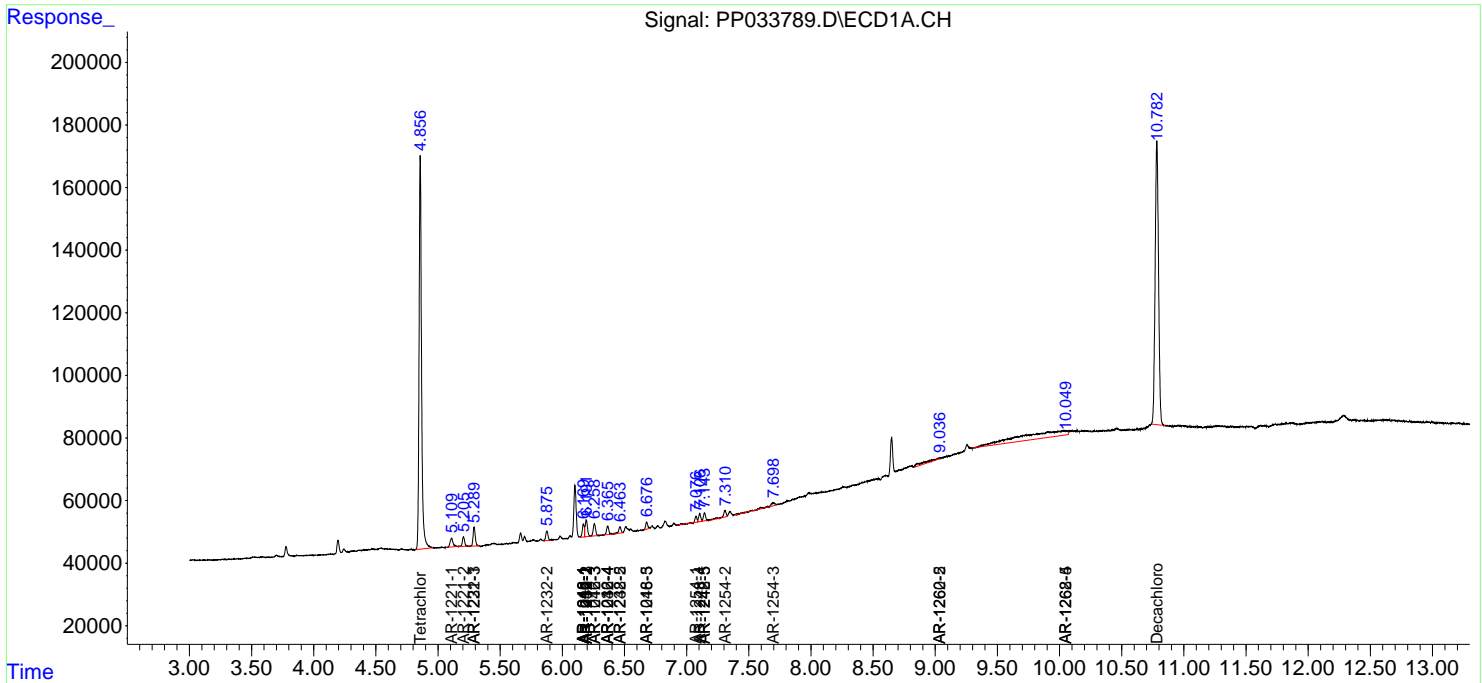
(f)=RT Delta > 1/2 Window (#)=Amounts differ by > 25% (m)=manual int.

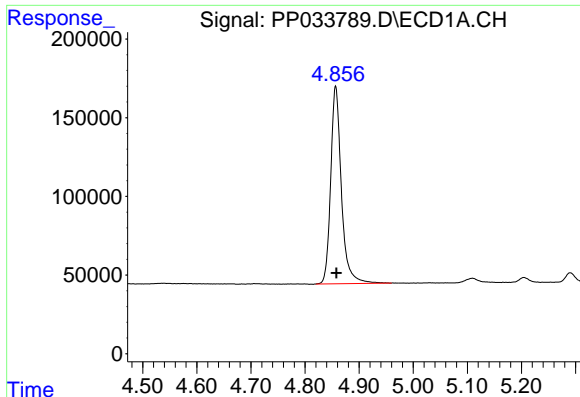
Data Path : Z:\pestpcbsrv\HPCHEM1\ECD_P\Data\PP030921\
 Data File : PP033789.D
 Signal(s) : Signal #1: ECD1A.CH Signal #2: ECD2B.CH
 Acq On : 10 Mar 2021 4:05
 Operator : DD\AJ
 Sample : M1458-07
 Misc : AR1232 LOD 40 PPB
 ALS Vial : 45 Sample Multiplier: 1

Instrument :
 ECD_P
 ClientSampled :

Integration File signal 1: autoint1.e
 Integration File signal 2: autoint2.e
 Quant Time: Mar 10 06:01:01 2021
 Quant Method : Z:\pestpcbsrv\HPCHEM1\ECD_P\methods\PP030921.M
 Quant Title : GC EXTRACTABLES
 QLast Update : Wed Mar 10 03:01:34 2021
 Response via : Initial Calibration
 Integrator: ChemStation 6890 Scale Mode: Small noise peaks clipped

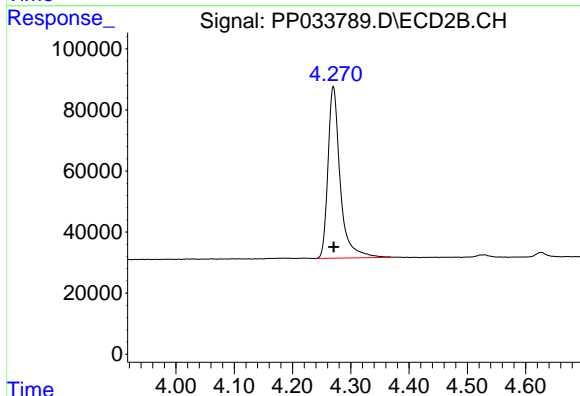
Volume Inj. : 2 µl
 Signal #1 Phase : ZB-MR1 Signal #2 Phase: ZB-MR2
 Signal #1 Info : 30Mx0.32mmx 0.50µ Signal #2 Info : 30M x 0.32mm x 0.25µm



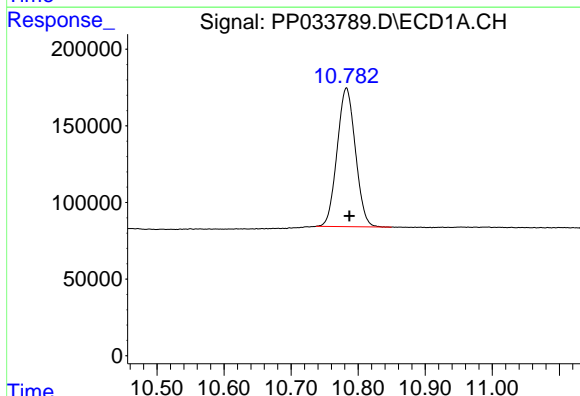


#1 Tetrachloro-m-xylene
 R.T.: 4.857 min
 Delta R.T.: -0.001 min
 Response: 1721751
 Conc: 19.90 ng/ml

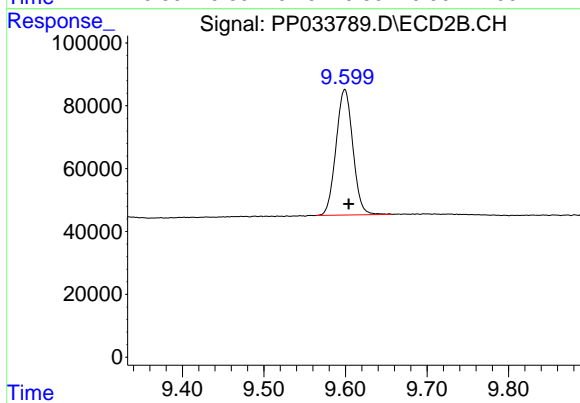
Instrument :
 ECD_P
 ClientSampleId :



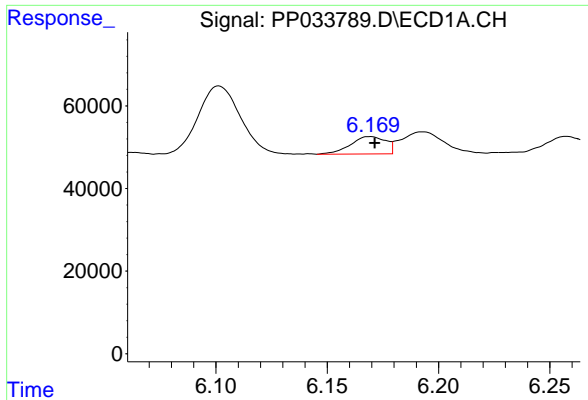
#1 Tetrachloro-m-xylene
 R.T.: 4.270 min
 Delta R.T.: -0.001 min
 Response: 81955
 Conc: 20.17 ng/ml



#2 Decachlorobiphenyl
 R.T.: 10.782 min
 Delta R.T.: -0.005 min
 Response: 1709848
 Conc: 20.25 ng/ml



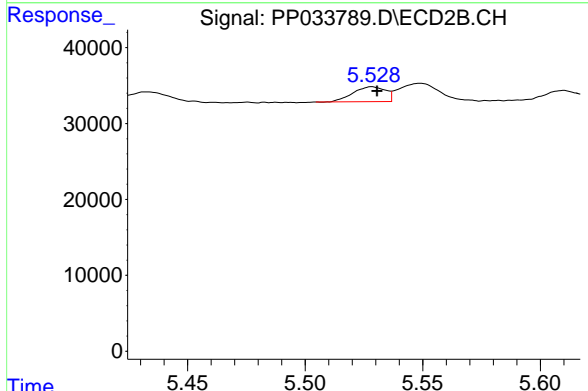
#2 Decachlorobiphenyl
 R.T.: 9.599 min
 Delta R.T.: -0.005 min
 Response: 573282
 Conc: 21.48 ng/ml



#3 AR-1016-1

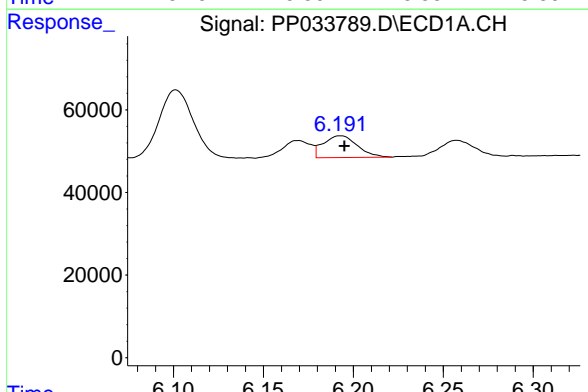
R.T.: 6.169 min
 Delta R.T.: -0.002 min
 Response: 46595
 Conc: 17.49 ng/ml

Instrument :
 ECD_P
 ClientSampled :



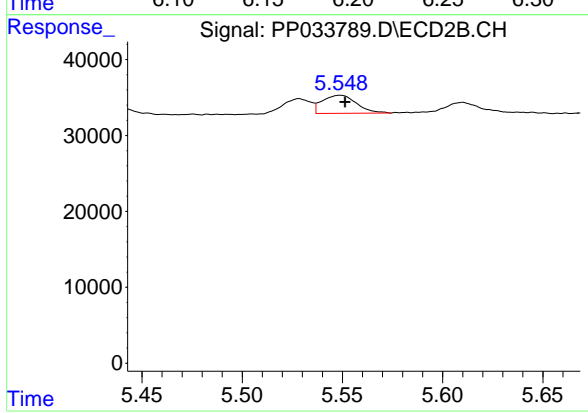
#3 AR-1016-1

R.T.: 5.528 min
 Delta R.T.: -0.002 min
 Response: 18944
 Conc: 16.64 ng/ml



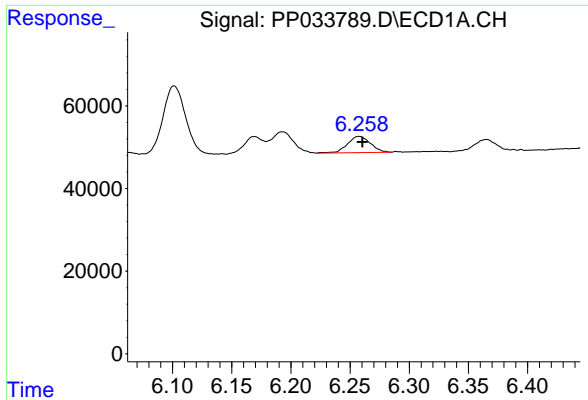
#4 AR-1016-2

R.T.: 6.193 min
 Delta R.T.: -0.002 min
 Response: 69401
 Conc: 17.17 ng/ml



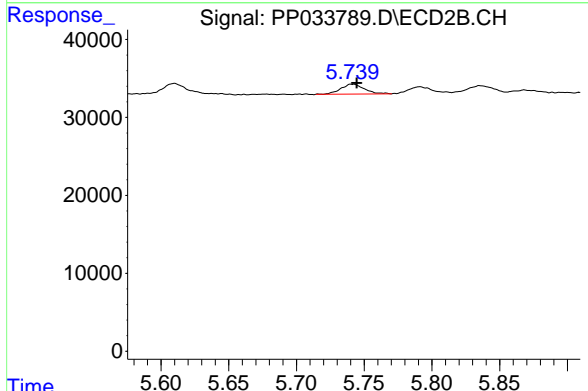
#4 AR-1016-2

R.T.: 5.549 min
 Delta R.T.: -0.002 min
 Response: 28411
 Conc: 17.19 ng/ml

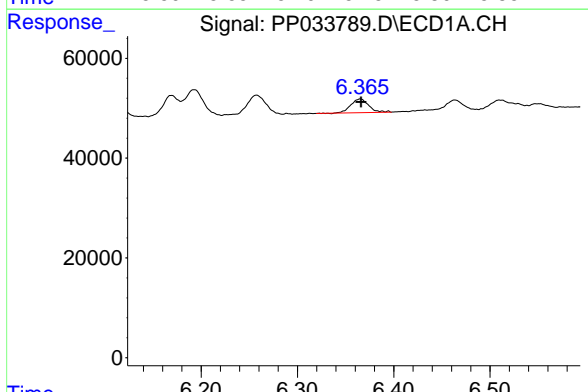


#5 AR-1016-3
 R.T.: 6.258 min
 Delta R.T.: -0.003 min
 Response: 52988
 Conc: 21.41 ng/ml

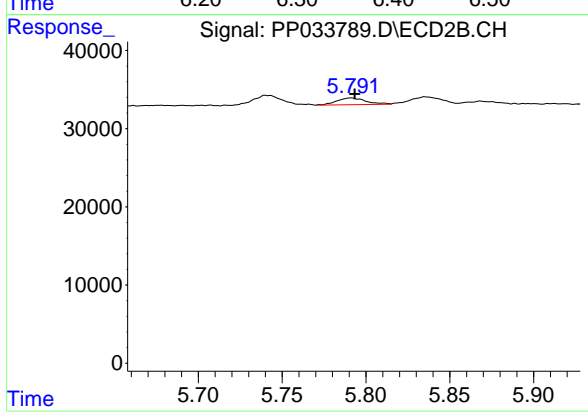
Instrument :
 ECD_P
 ClientSampled :



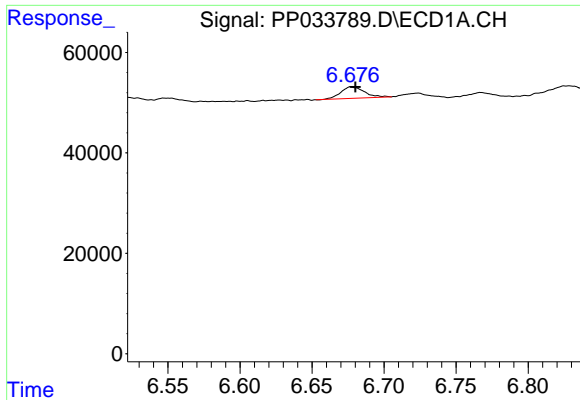
#5 AR-1016-3
 R.T.: 5.741 min
 Delta R.T.: -0.003 min
 Response: 15695
 Conc: 17.13 ng/ml



#6 AR-1016-4
 R.T.: 6.365 min
 Delta R.T.: 0.000 min
 Response: 35389
 Conc: 17.36 ng/ml

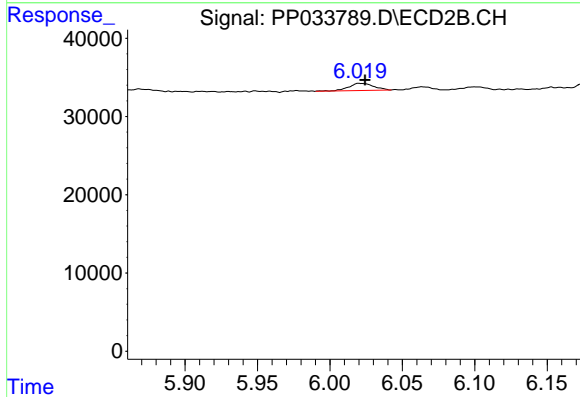


#6 AR-1016-4
 R.T.: 5.791 min
 Delta R.T.: -0.002 min
 Response: 10240
 Conc: 14.18 ng/ml

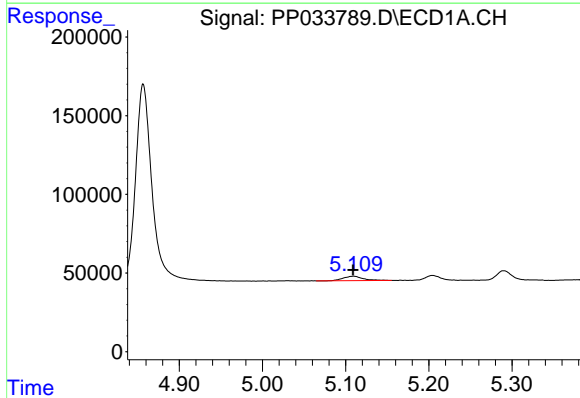


#7 AR-1016-5
 R.T.: 6.677 min
 Delta R.T.: -0.003 min
 Response: 26158
 Conc: 12.90 ng/ml

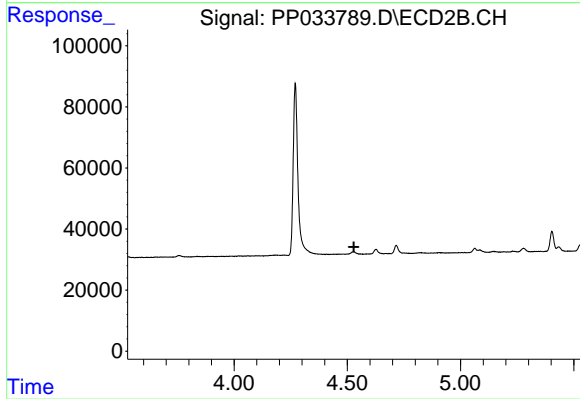
Instrument :
 ECD_P
 ClientSampleId :



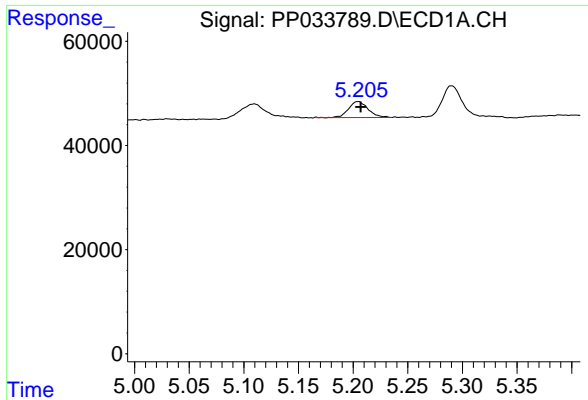
#7 AR-1016-5
 R.T.: 6.021 min
 Delta R.T.: -0.003 min
 Response: 10926
 Conc: 11.82 ng/ml



#8 AR-1221-1
 R.T.: 5.109 min
 Delta R.T.: 0.000 min
 Response: 45784
 Conc: 49.61 ng/ml

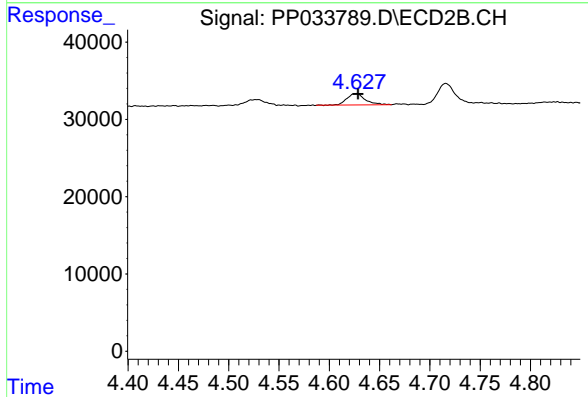


#8 AR-1221-1
 R.T.: 0.000 min
 Exp R.T. : 4.529 min
 Response: 0
 Conc: N.D.

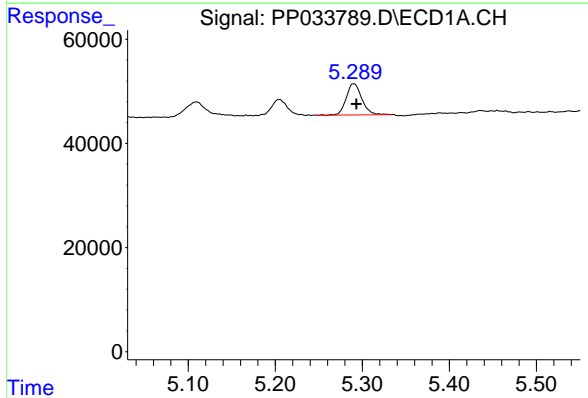


#9 AR-1221-2
 R.T.: 5.204 min
 Delta R.T.: -0.002 min
 Response: 38199
 Conc: 54.36 ng/ml

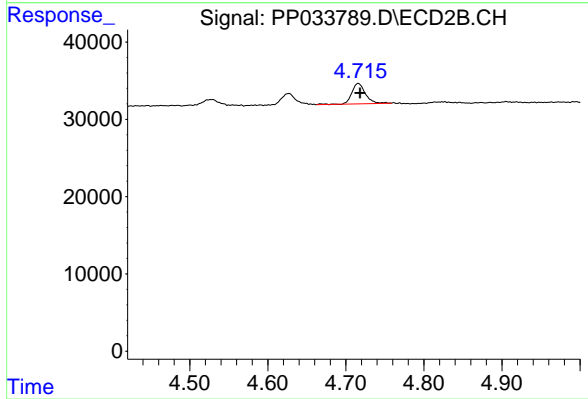
Instrument :
 ECD_P
 ClientSampleId :



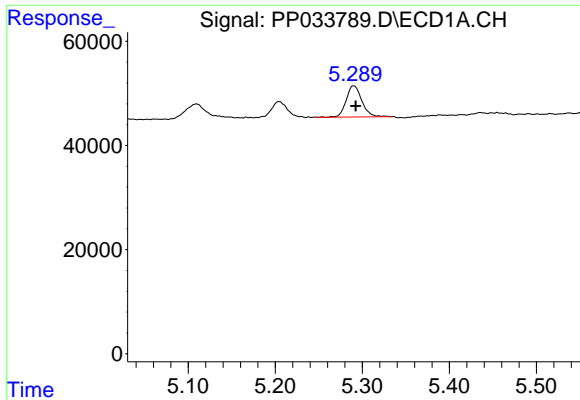
#9 AR-1221-2
 R.T.: 4.627 min
 Delta R.T.: -0.002 min
 Response: 18691
 Conc: 57.76 ng/ml



#10 AR-1221-3
 R.T.: 5.290 min
 Delta R.T.: -0.003 min
 Response: 74678
 Conc: 35.48 ng/ml

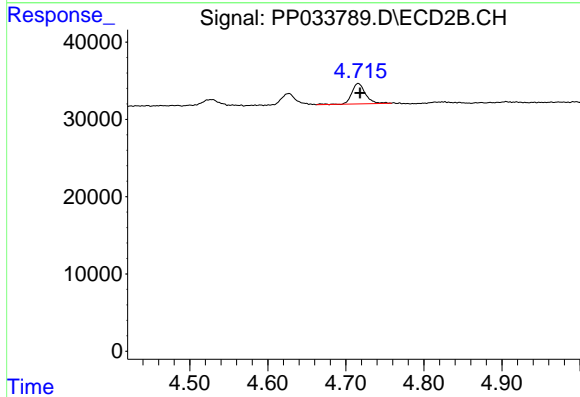


#10 AR-1221-3
 R.T.: 4.716 min
 Delta R.T.: -0.002 min
 Response: 32194
 Conc: 32.84 ng/ml

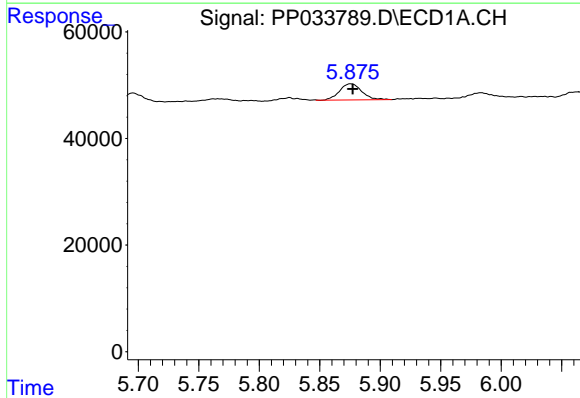


#11 AR-1232-1
 R.T.: 5.290 min
 Delta R.T.: -0.002 min
 Response: 74678
 Conc: 43.16 ng/ml

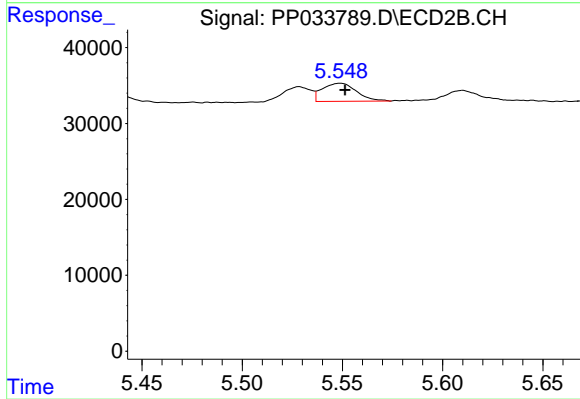
Instrument :
 ECD_P
 ClientSampleId :



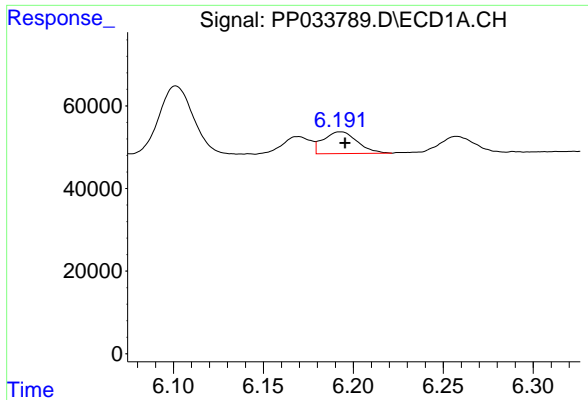
#11 AR-1232-1
 R.T.: 4.716 min
 Delta R.T.: -0.002 min
 Response: 32194
 Conc: 39.63 ng/ml



#12 AR-1232-2
 R.T.: 5.876 min
 Delta R.T.: -0.002 min
 Response: 38727
 Conc: 42.29 ng/ml



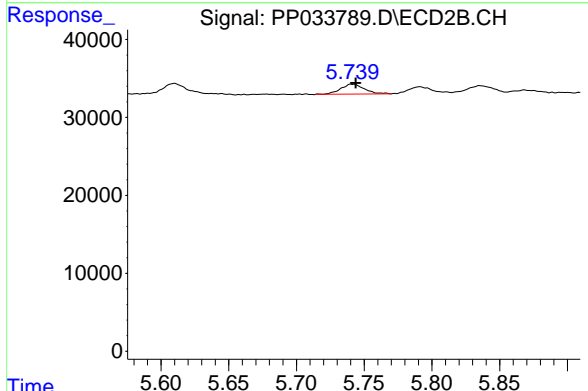
#12 AR-1232-2
 R.T.: 5.549 min
 Delta R.T.: -0.002 min
 Response: 28411
 Conc: 39.20 ng/ml



#13 AR-1232-3

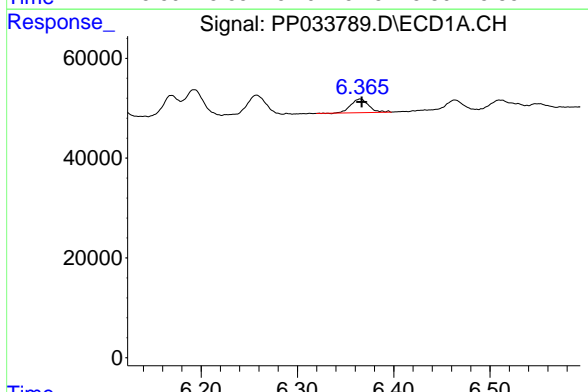
R.T.: 6.193 min
 Delta R.T.: -0.002 min
 Response: 69401
 Conc: 41.06 ng/ml

Instrument :
 ECD_P
 ClientSampleId :



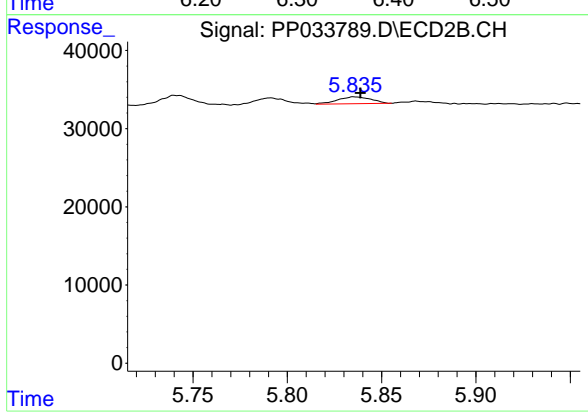
#13 AR-1232-3

R.T.: 5.741 min
 Delta R.T.: -0.003 min
 Response: 15695
 Conc: 40.81 ng/ml



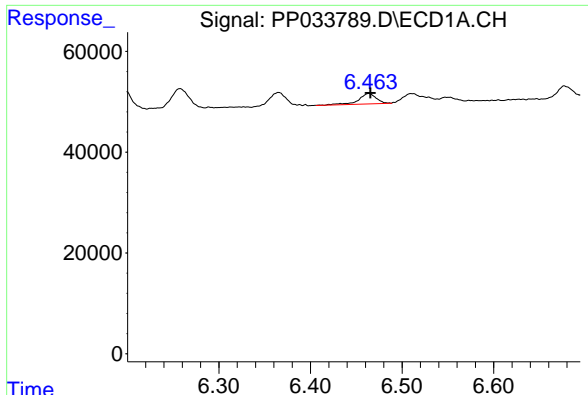
#14 AR-1232-4

R.T.: 6.365 min
 Delta R.T.: -0.001 min
 Response: 35389
 Conc: 41.43 ng/ml



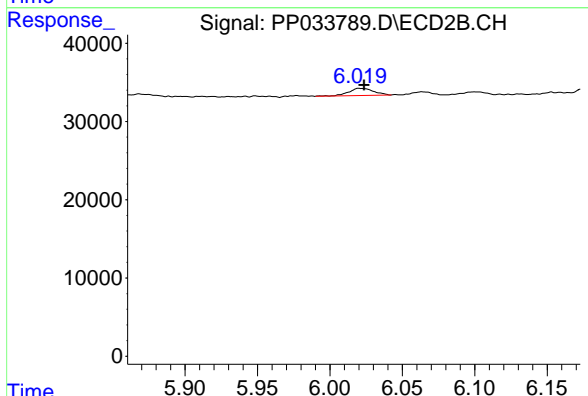
#14 AR-1232-4

R.T.: 5.836 min
 Delta R.T.: -0.003 min
 Response: 10806
 Conc: 32.40 ng/ml

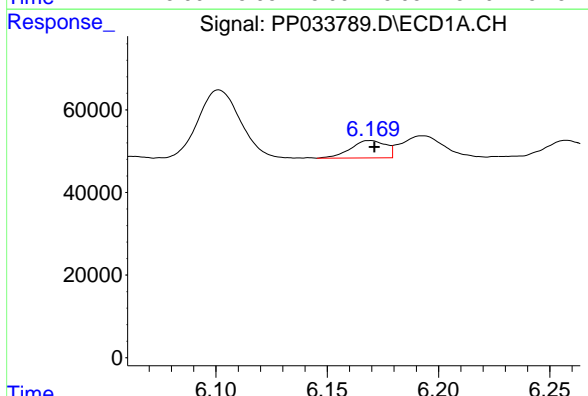


#15 AR-1232-5
 R.T.: 6.464 min
 Delta R.T.: -0.002 min
 Response: 27674
 Conc: 46.65 ng/ml

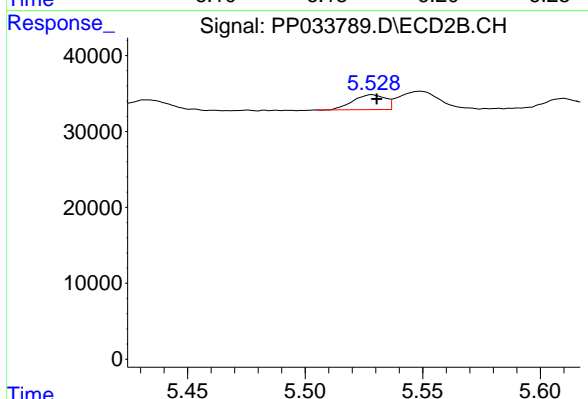
Instrument :
 ECD_P
 ClientSampleId :



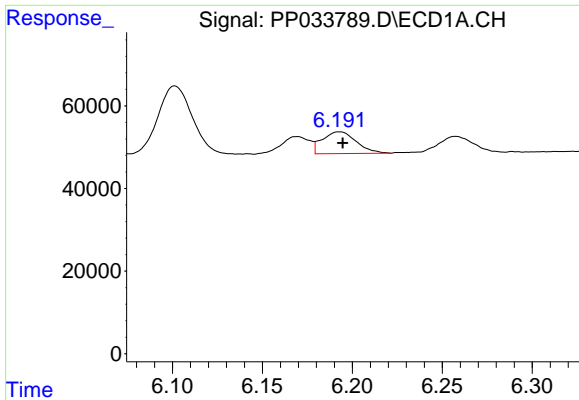
#15 AR-1232-5
 R.T.: 6.021 min
 Delta R.T.: -0.003 min
 Response: 10926
 Conc: 30.15 ng/ml



#16 AR-1242-1
 R.T.: 6.169 min
 Delta R.T.: -0.002 min
 Response: 46595
 Conc: 22.96 ng/ml



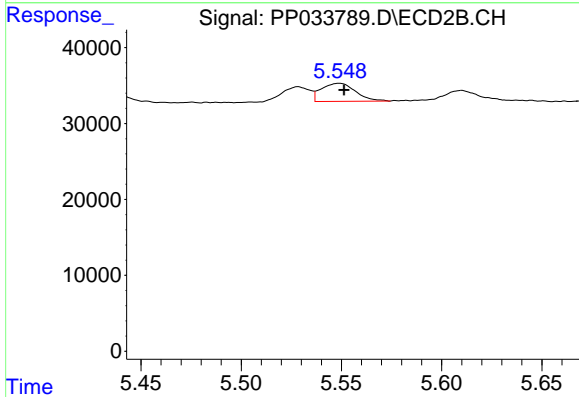
#16 AR-1242-1
 R.T.: 5.528 min
 Delta R.T.: -0.002 min
 Response: 18944
 Conc: 21.45 ng/ml



#17 AR-1242-2

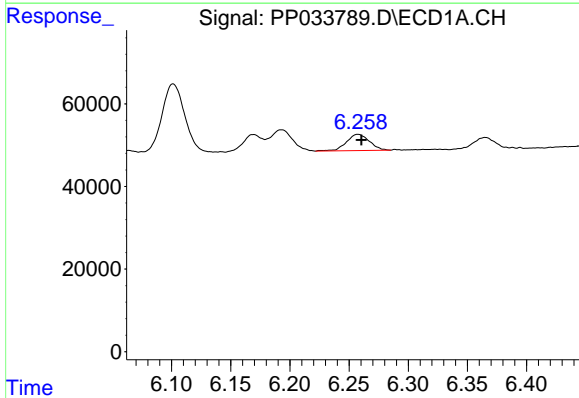
R.T.: 6.193 min
 Delta R.T.: -0.002 min
 Response: 69401
 Conc: 22.86 ng/ml

Instrument :
 ECD_P
 ClientSampleId :



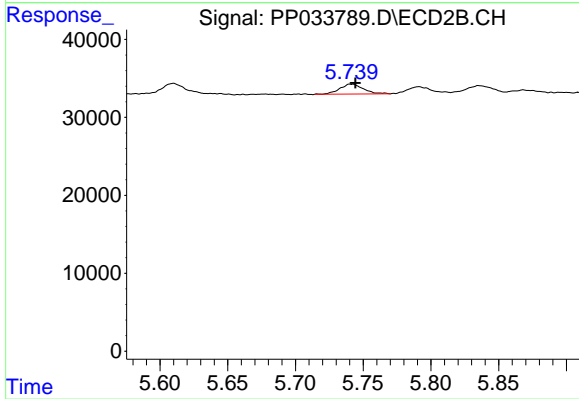
#17 AR-1242-2

R.T.: 5.549 min
 Delta R.T.: -0.002 min
 Response: 28411
 Conc: 22.65 ng/ml



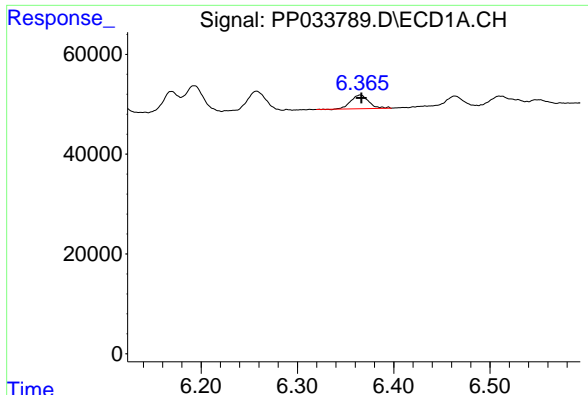
#18 AR-1242-3

R.T.: 6.258 min
 Delta R.T.: -0.003 min
 Response: 52988
 Conc: 27.73 ng/ml



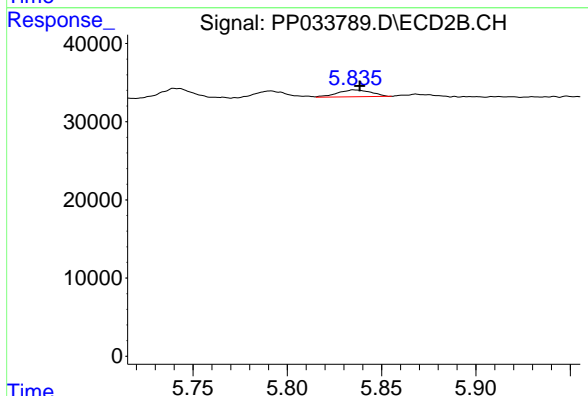
#18 AR-1242-3

R.T.: 5.741 min
 Delta R.T.: -0.003 min
 Response: 15695
 Conc: 22.23 ng/ml

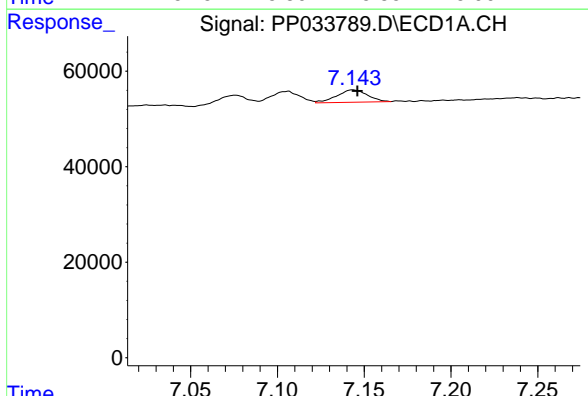


#19 AR-1242-4
 R.T.: 6.365 min
 Delta R.T.: -0.001 min
 Response: 35389
 Conc: 22.75 ng/ml

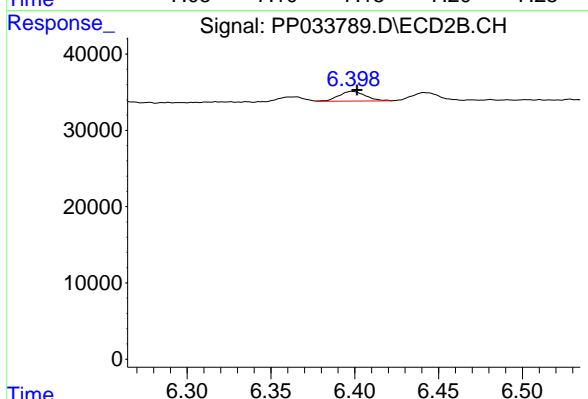
Instrument :
 ECD_P
 ClientSampled :



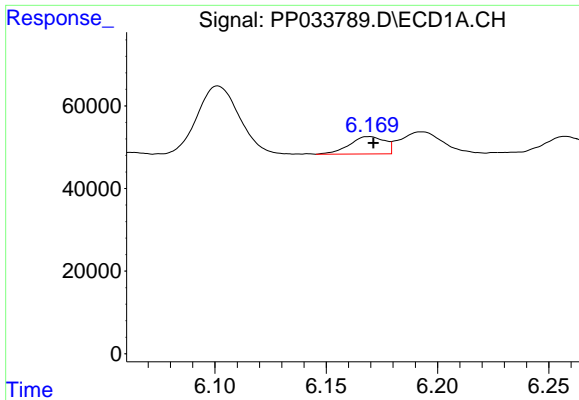
#19 AR-1242-4
 R.T.: 5.836 min
 Delta R.T.: -0.003 min
 Response: 10806
 Conc: 15.78 ng/ml



#20 AR-1242-5
 R.T.: 7.143 min
 Delta R.T.: -0.003 min
 Response: 31699
 Conc: 19.75 ng/ml



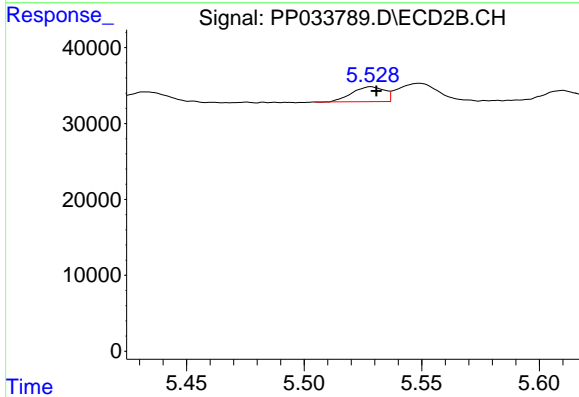
#20 AR-1242-5
 R.T.: 6.399 min
 Delta R.T.: -0.003 min
 Response: 14307
 Conc: 17.90 ng/ml



#21 AR-1248-1

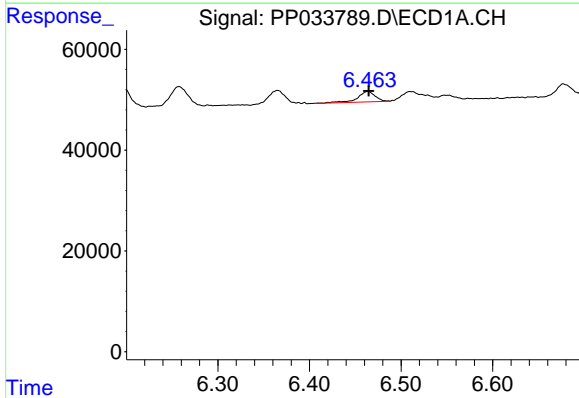
R.T.: 6.169 min
 Delta R.T.: -0.002 min
 Response: 46595
 Conc: 29.87 ng/ml

Instrument :
 ECD_P
 ClientSampled :



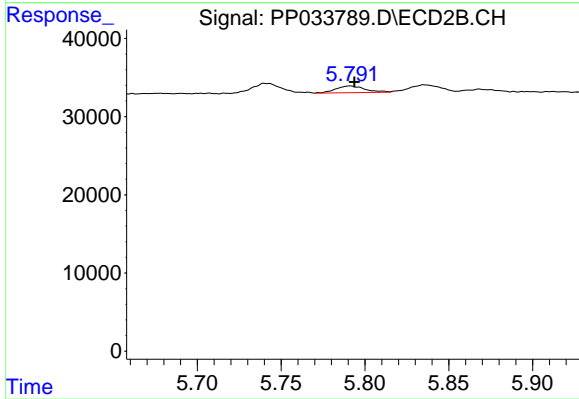
#21 AR-1248-1

R.T.: 5.528 min
 Delta R.T.: -0.002 min
 Response: 18944
 Conc: 27.83 ng/ml



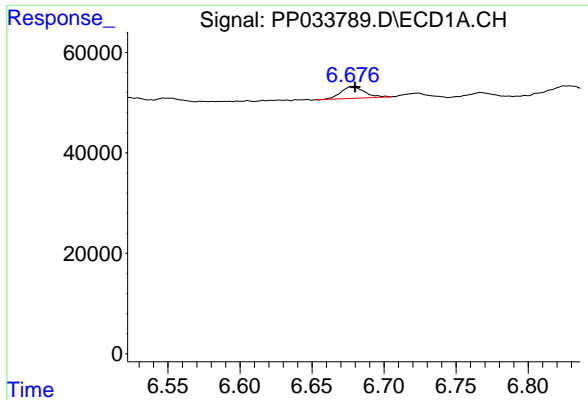
#22 AR-1248-2

R.T.: 6.464 min
 Delta R.T.: -0.001 min
 Response: 27674
 Conc: 13.00 ng/ml



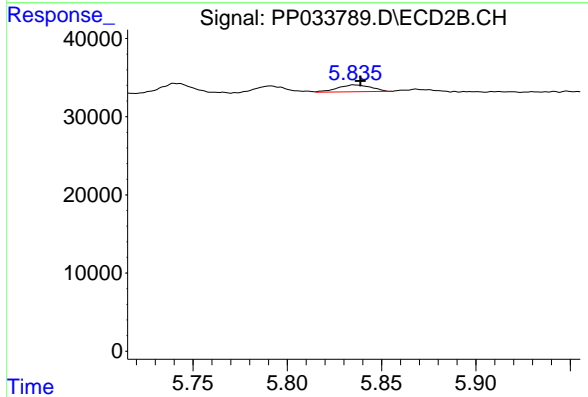
#22 AR-1248-2

R.T.: 5.791 min
 Delta R.T.: -0.003 min
 Response: 10240
 Conc: 10.91 ng/ml

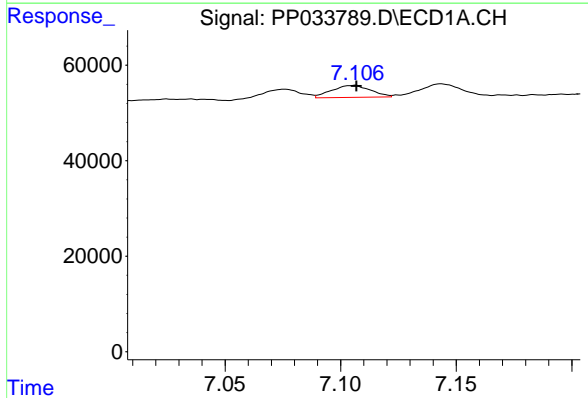


#23 AR-1248-3
 R.T.: 6.677 min
 Delta R.T.: -0.003 min
 Response: 26158
 Conc: 10.15 ng/ml

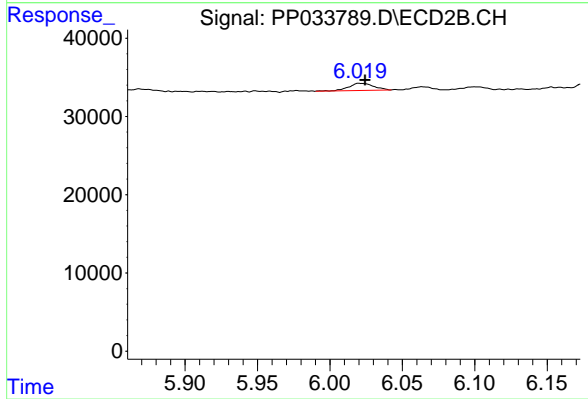
Instrument :
 ECD_P
 ClientSampleId :



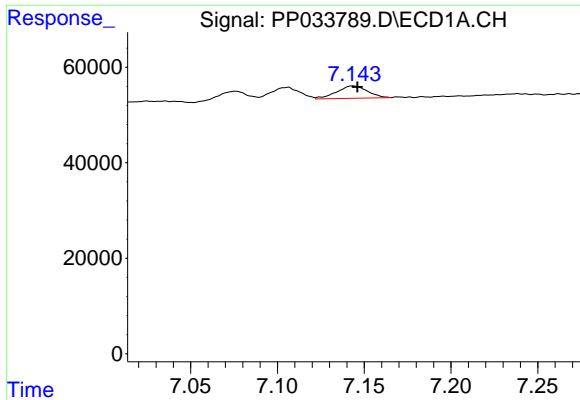
#23 AR-1248-3
 R.T.: 5.836 min
 Delta R.T.: -0.003 min
 Response: 10806
 Conc: 10.73 ng/ml



#24 AR-1248-4
 R.T.: 7.106 min
 Delta R.T.: -0.001 min
 Response: 29249
 Conc: 10.57 ng/ml



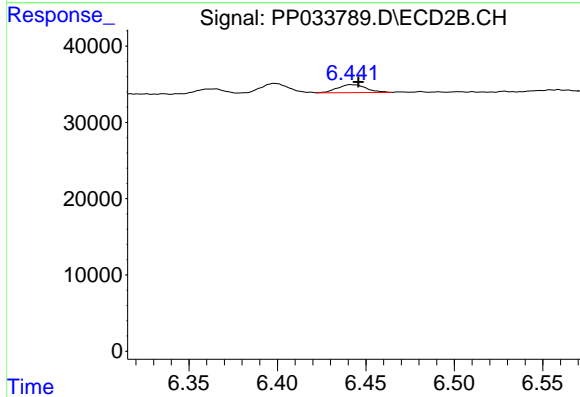
#24 AR-1248-4
 R.T.: 6.021 min
 Delta R.T.: -0.003 min
 Response: 10926
 Conc: 9.33 ng/ml



#25 AR-1248-5

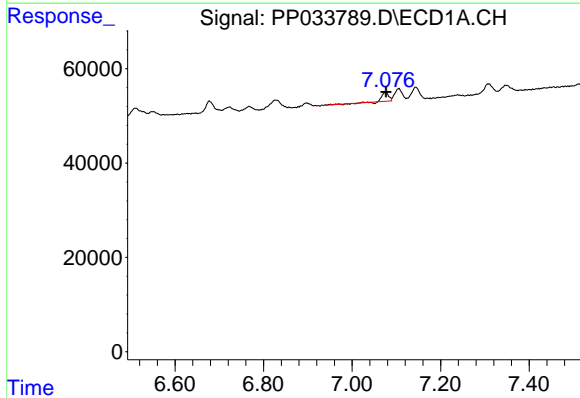
R.T.: 7.143 min
 Delta R.T.: -0.003 min
 Response: 31699
 Conc: 11.62 ng/ml

Instrument :
 ECD_P
 ClientSampleId :



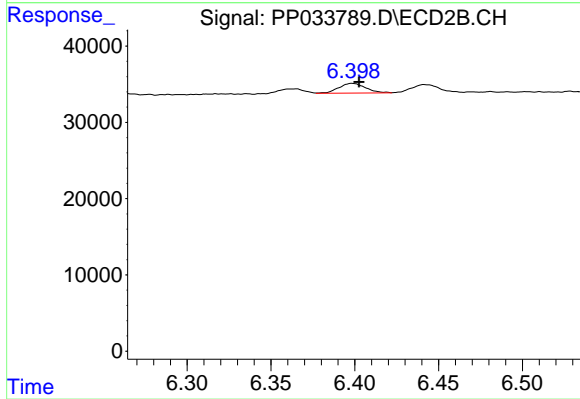
#25 AR-1248-5

R.T.: 6.442 min
 Delta R.T.: -0.004 min
 Response: 11926
 Conc: 11.07 ng/ml



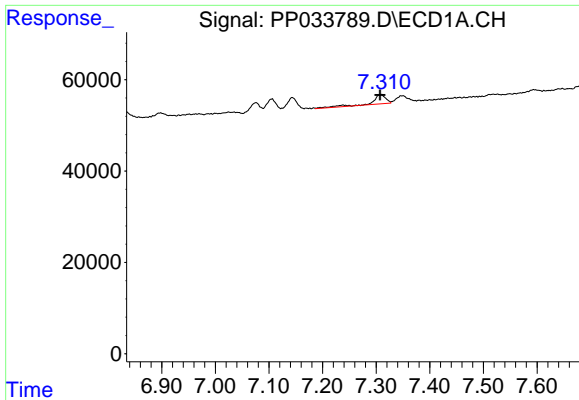
#26 AR-1254-1

R.T.: 7.076 min
 Delta R.T.: -0.001 min
 Response: 18276
 Conc: 6.41 ng/ml



#26 AR-1254-1

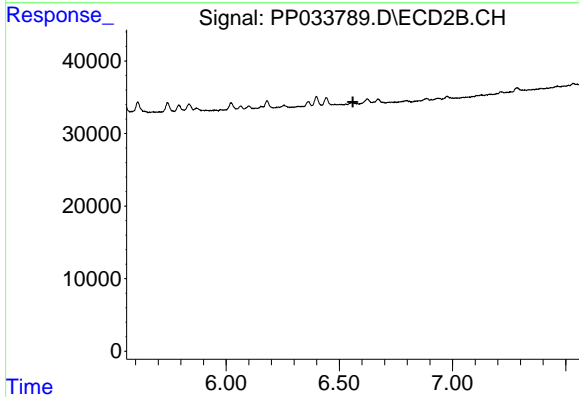
R.T.: 6.399 min
 Delta R.T.: -0.004 min
 Response: 14307
 Conc: 8.70 ng/ml



#27 AR-1254-2

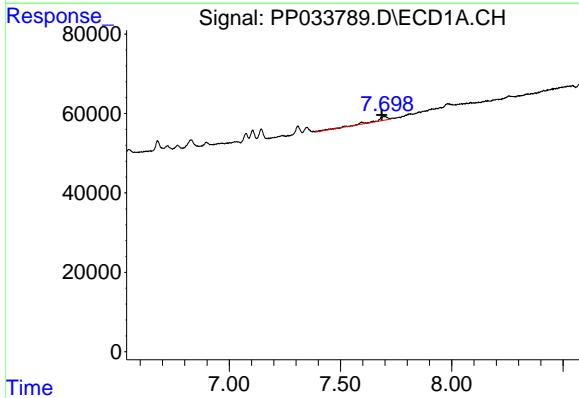
R.T.: 7.309 min
 Delta R.T.: 0.002 min
 Response: 35629
 Conc: 8.12 ng/ml

Instrument :
 ECD_P
 ClientSampled :



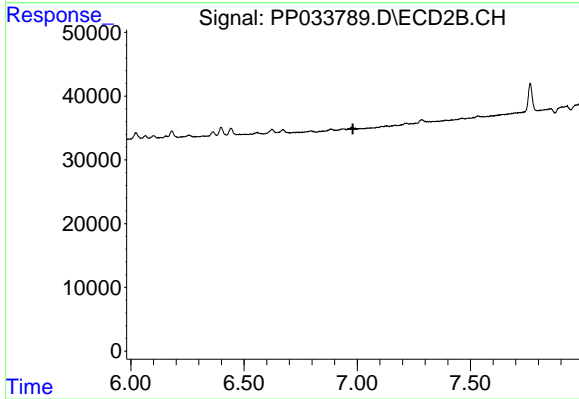
#27 AR-1254-2

R.T.: 0.000 min
 Exp R.T. : 6.560 min
 Response: 0
 Conc: N.D.



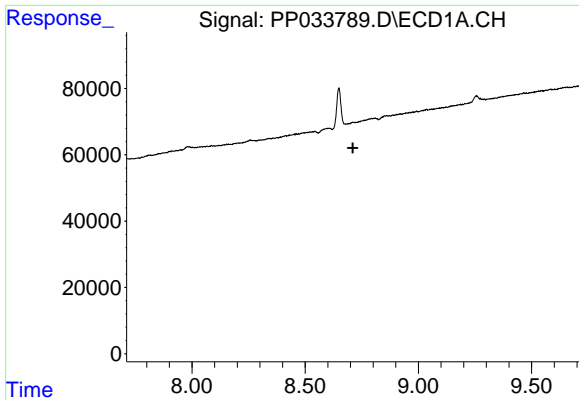
#28 AR-1254-3

R.T.: 7.699 min
 Delta R.T.: 0.013 min
 Response: 36660
 Conc: 7.73 ng/ml



#28 AR-1254-3

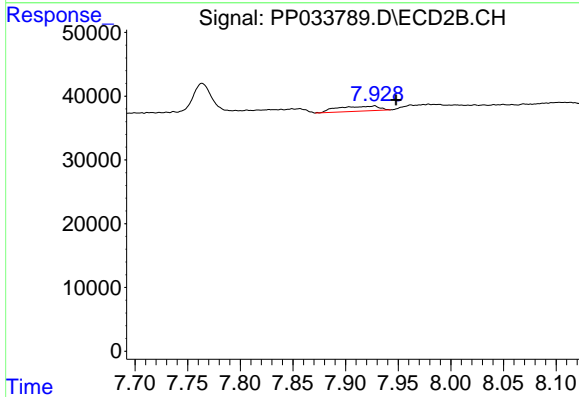
R.T.: 0.000 min
 Exp R.T. : 6.981 min
 Response: 0
 Conc: N.D.



#34 AR-1260-4

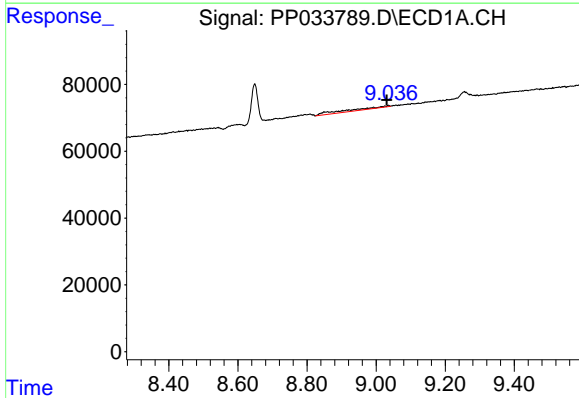
R.T.: 0.000 min
 Exp R.T.: 8.711 min
 Response: 0
 Conc: N.D.

Instrument :
 ECD_P
 ClientSampled :



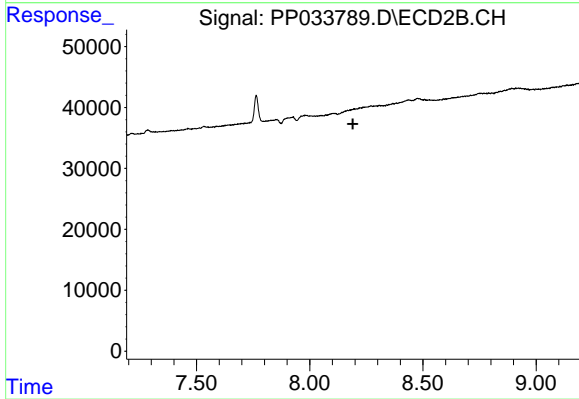
#34 AR-1260-4

R.T.: 7.928 min
 Delta R.T.: -0.020 min
 Response: 21173
 Conc: 14.40 ng/ml



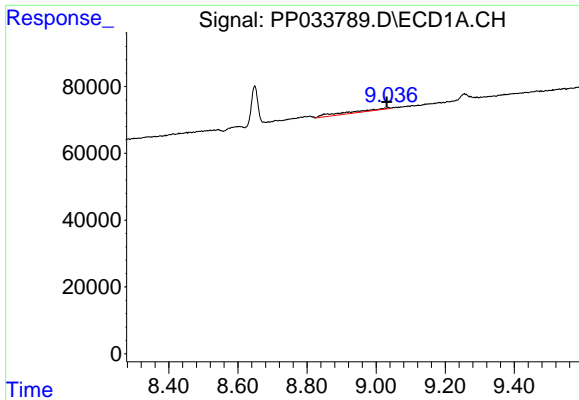
#35 AR-1260-5

R.T.: 9.036 min
 Delta R.T.: 0.005 min
 Response: 51187
 Conc: 6.62 ng/ml



#35 AR-1260-5

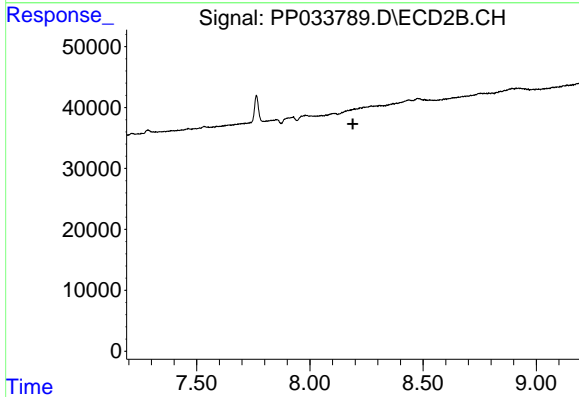
R.T.: 0.000 min
 Exp R.T.: 8.191 min
 Response: 0
 Conc: N.D.



#37 AR-1262-2

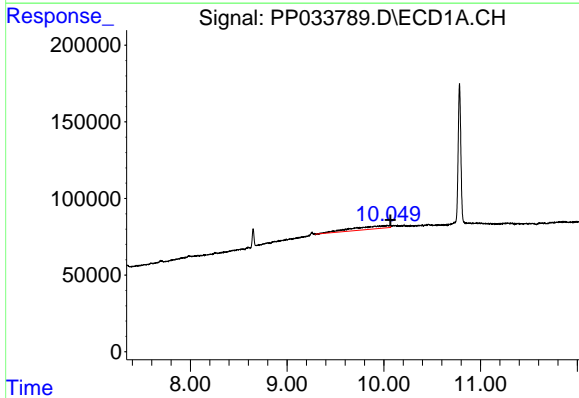
R.T.: 9.036 min
 Delta R.T.: 0.005 min
 Response: 51187
 Conc: 5.92 ng/ml

Instrument :
 ECD_P
 ClientSampleId :



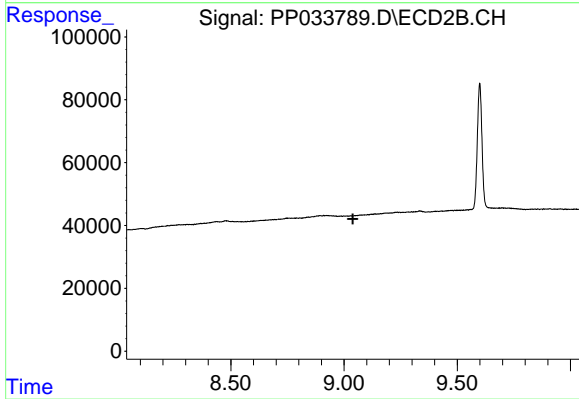
#37 AR-1262-2

R.T.: 0.000 min
 Exp R.T. : 8.190 min
 Response: 0
 Conc: N.D.



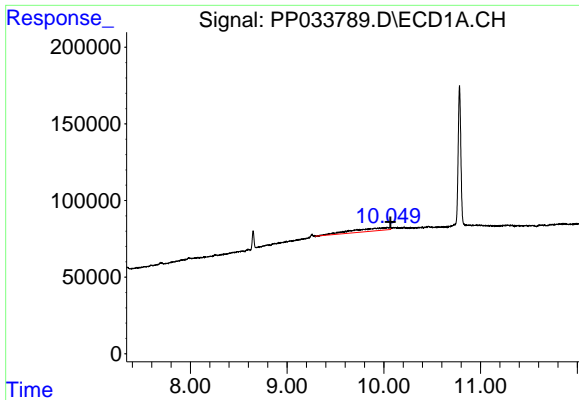
#40 AR-1262-5

R.T.: 10.050 min
 Delta R.T.: -0.018 min
 Response: 535356
 Conc: 162.66 ng/ml



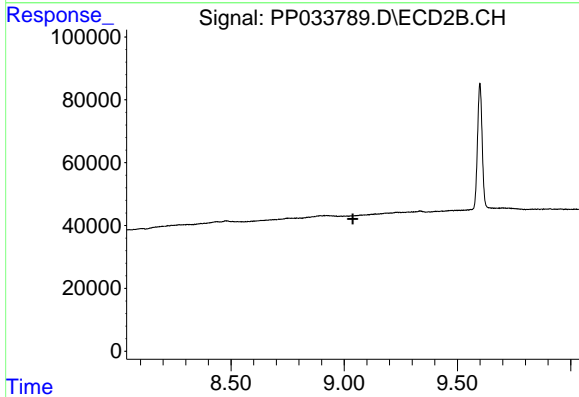
#40 AR-1262-5

R.T.: 0.000 min
 Exp R.T. : 9.039 min
 Response: 0
 Conc: N.D.

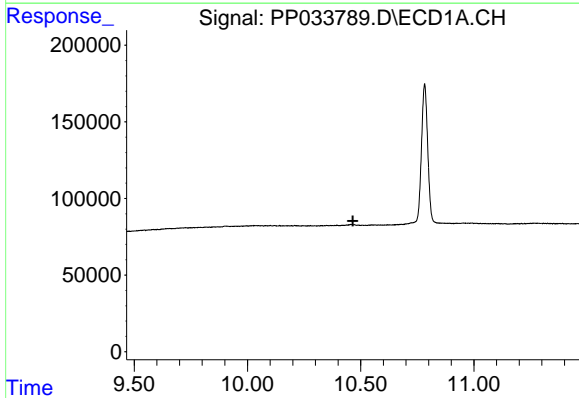


#44 AR-1268-4
 R.T.: 10.050 min
 Delta R.T.: -0.019 min
 Response: 535356
 Conc: 153.73 ng/ml

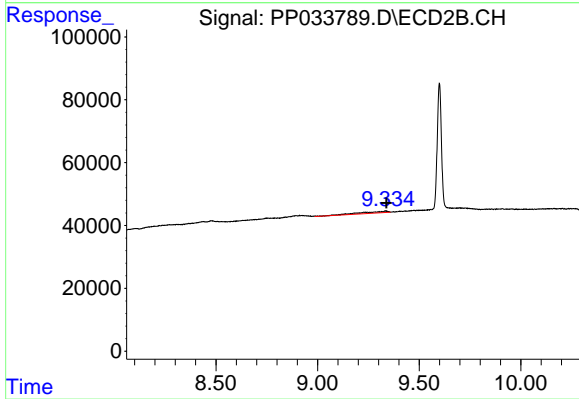
Instrument :
 ECD_P
 ClientSampleId :



#44 AR-1268-4
 R.T.: 0.000 min
 Exp R.T. : 9.038 min
 Response: 0
 Conc: N.D.



#45 AR-1268-5
 R.T.: 0.000 min
 Exp R.T. : 10.466 min
 Response: 0
 Conc: N.D.



#45 AR-1268-5
 R.T.: 9.335 min
 Delta R.T.: -0.004 min
 Response: 49457
 Conc: 5.41 ng/ml