

Data Path : Z:\pestpcbsrv\HPCHEM1\ECD_P\Data\PP030922\
 Data File : PP044427.D
 Signal(s) : Signal #1: ECD1A.ch Signal #2: ECD2B.ch
 Acq On : 09 Mar 2022 22:01
 Operator : YP\AJ
 Sample : N1645-07
 Misc : AR1254 LOD 25 PPB
 ALS Vial : 31 Sample Multiplier: 1

Instrument :
 ECD_P
ClientSampleId :
 LOD-MDL-WATER-01-QT1-2022

Integration File signal 1: autoint1.e
 Integration File signal 2: autoint2.e
 Quant Time: Mar 10 01:19:29 2022
 Quant Method : Z:\pestpcbsrv\HPCHEM1\ECD_P\methods\PP030222.M
 Quant Title : GC EXTRACTABLES
 QLast Update : Thu Mar 03 02:21:53 2022
 Response via : Initial Calibration
 Integrator: ChemStation

Volume Inj. : 2 µl
 Signal #1 Phase : ZB-MR2 Signal #2 Phase: ZB-MR2
 Signal #1 Info : 30Mx0.32mmx 0.50µ Signal #2 Info : 30M x 0.32mm x 0.25µm

Compound	RT#1	RT#2	Resp#1	Resp#2	ng/ml	ng/ml

System Monitoring Compounds						
1) SA Tetrachlo...	3.909	3.165	36550277	32197037	17.640	18.404
2) SA Decachlor...	10.044	8.530	24633767	28872256	17.898	18.822
Target Compounds						
26) L6 AR-1254-1	6.087	5.162	1576177	2137347	21.016	25.853
27) L6 AR-1254-2	6.327	5.322	2301459	1922038	20.482	26.718 #
28) L6 AR-1254-3	6.726	5.754	2682095	2912436	22.921	25.279
29) L6 AR-1254-4	7.040	6.003	1806665	1853009	22.471	24.614
30) L6 AR-1254-5	7.500	6.455	2119479	2196014	24.349	20.151

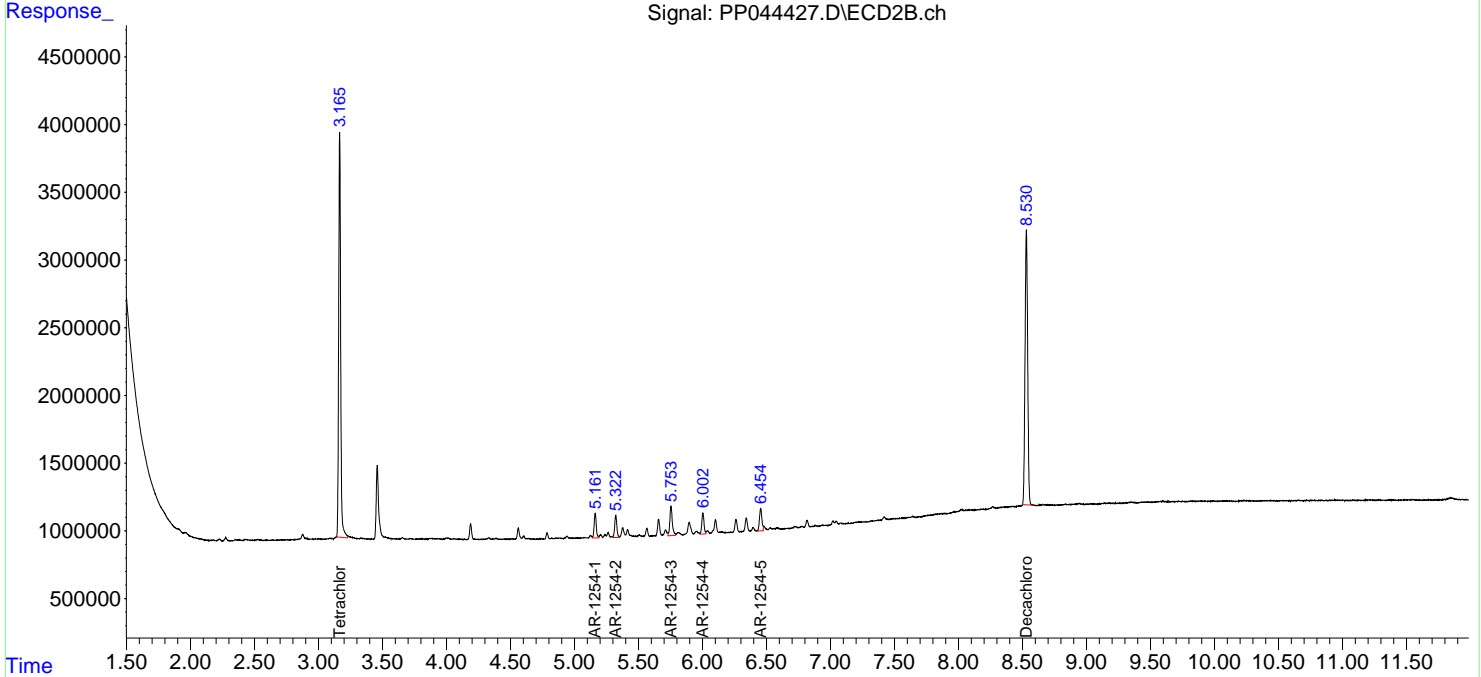
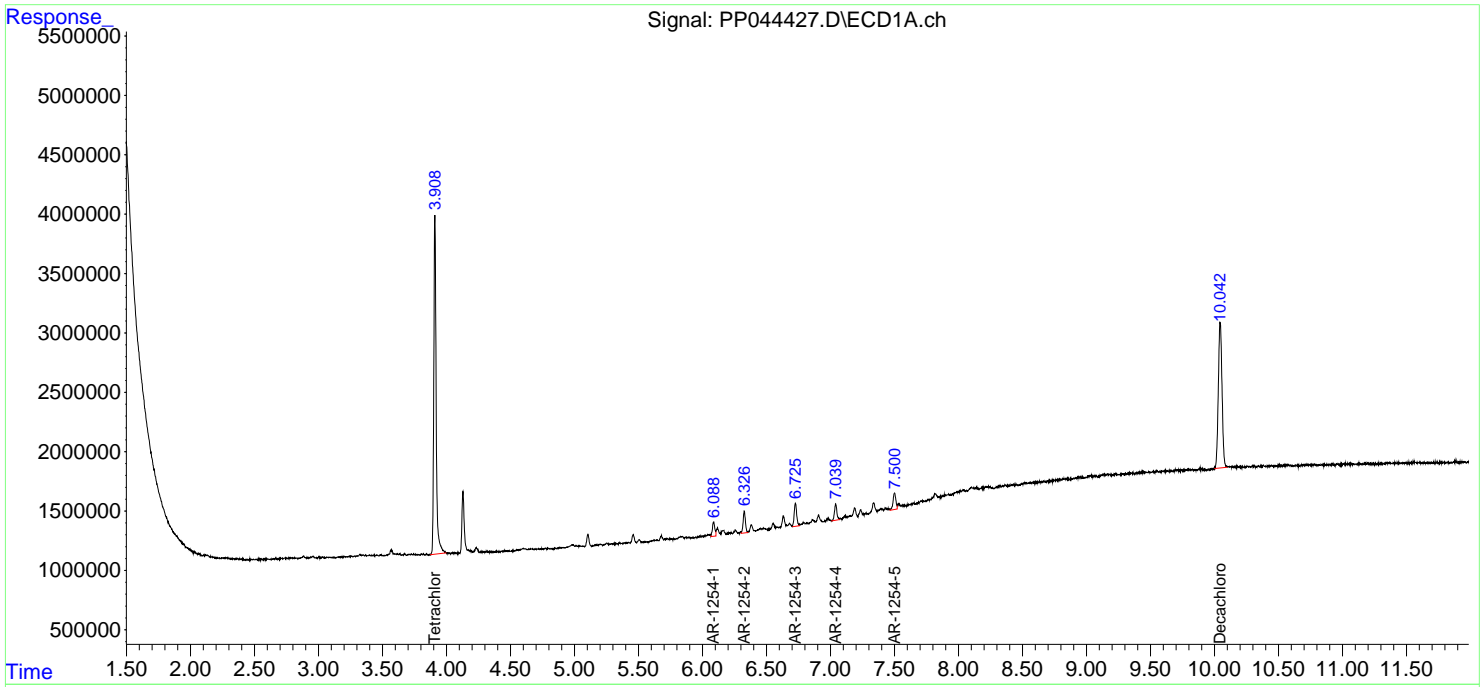
(f)=RT Delta > 1/2 Window (#)=Amounts differ by > 25% (m)=manual int.

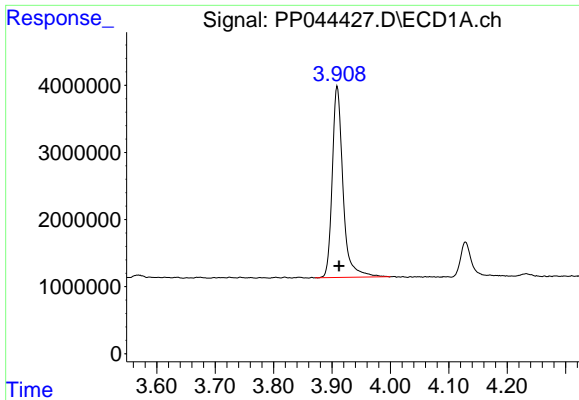
Data Path : Z:\pestpcbsrv\HPCHEM1\ECD_P\Data\PP030922\
 Data File : PP044427.D
 Signal(s) : Signal #1: ECD1A.ch Signal #2: ECD2B.ch
 Acq On : 09 Mar 2022 22:01
 Operator : YP\AJ
 Sample : N1645-07
 Misc : AR1254 LOD 25 PPB
 ALS Vial : 31 Sample Multiplier: 1

Instrument :
 ECD_P
ClientSampleId :
 LOD-MDL-WATER-01-QT1-2022

Integration File signal 1: autoint1.e
 Integration File signal 2: autoint2.e
 Quant Time: Mar 10 01:19:29 2022
 Quant Method : Z:\pestpcbsrv\HPCHEM1\ECD_P\methods\PP030222.M
 Quant Title : GC EXTRACTABLES
 QLast Update : Thu Mar 03 02:21:53 2022
 Response via : Initial Calibration
 Integrator: ChemStation

Volume Inj. : 2 µl
 Signal #1 Phase : ZB-MR1 Signal #2 Phase: ZB-MR2
 Signal #1 Info : 30Mx0.32mmx 0.50µ Signal #2 Info : 30M x 0.32mm x 0.25µm

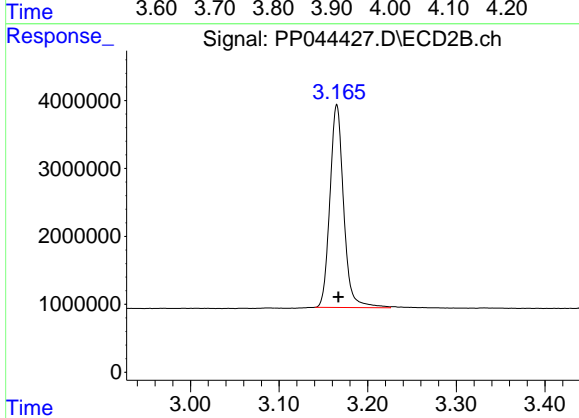




#1 Tetrachloro-m-xylene

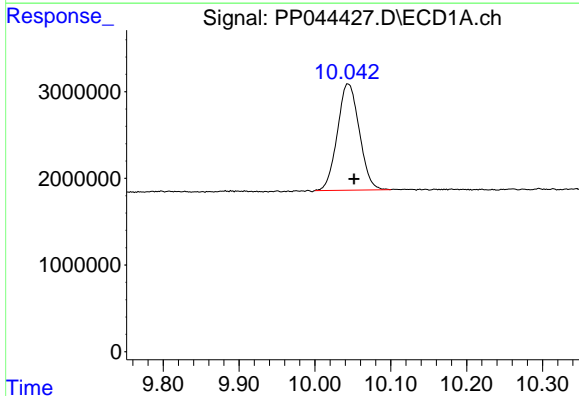
R.T.: 3.909 min
 Delta R.T.: -0.003 min
 Response: 36550277
 Conc: 17.64 ng/ml

Instrument :
 ECD_P
 ClientSampleId :
 LOD-MDL-WATER-01-QT1-2022



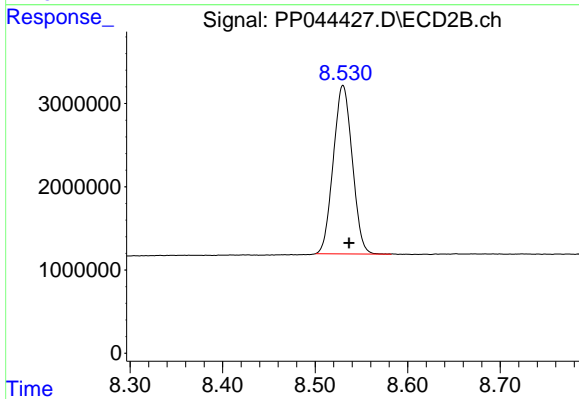
#1 Tetrachloro-m-xylene

R.T.: 3.165 min
 Delta R.T.: -0.002 min
 Response: 32197037
 Conc: 18.40 ng/ml



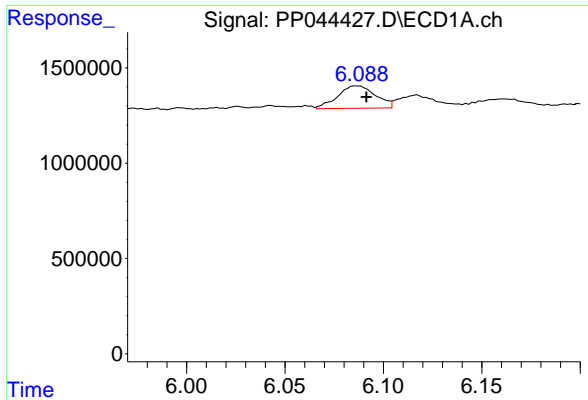
#2 Decachlorobiphenyl

R.T.: 10.044 min
 Delta R.T.: -0.008 min
 Response: 24633767
 Conc: 17.90 ng/ml



#2 Decachlorobiphenyl

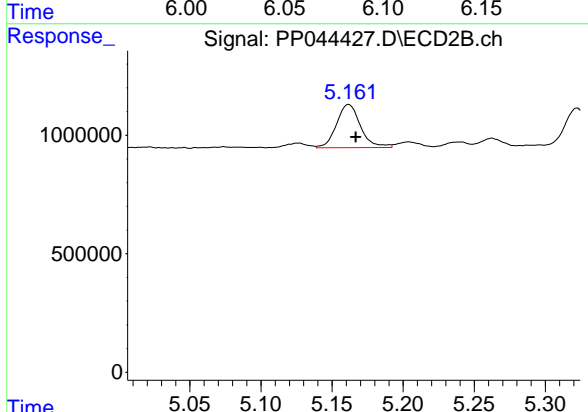
R.T.: 8.530 min
 Delta R.T.: -0.007 min
 Response: 28872256
 Conc: 18.82 ng/ml



#26 AR-1254-1

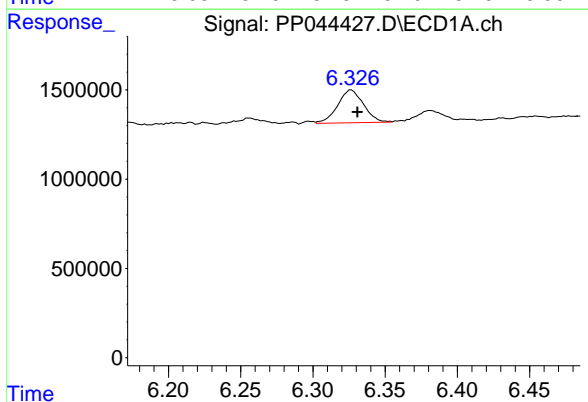
R.T.: 6.087 min
 Delta R.T.: -0.005 min
 Response: 1576177
 Conc: 21.02 ng/ml

Instrument : ECD_P
 ClientSampleId : LOD-MDL-WATER-01-QT1-2022



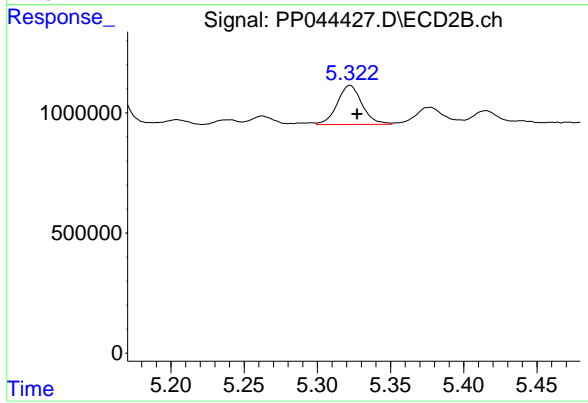
#26 AR-1254-1

R.T.: 5.162 min
 Delta R.T.: -0.005 min
 Response: 2137347
 Conc: 25.85 ng/ml



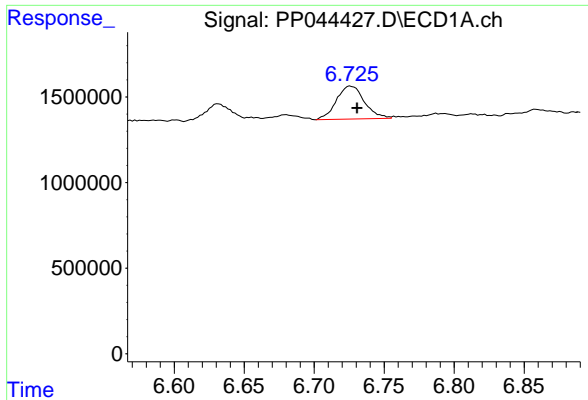
#27 AR-1254-2

R.T.: 6.327 min
 Delta R.T.: -0.004 min
 Response: 2301459
 Conc: 20.48 ng/ml



#27 AR-1254-2

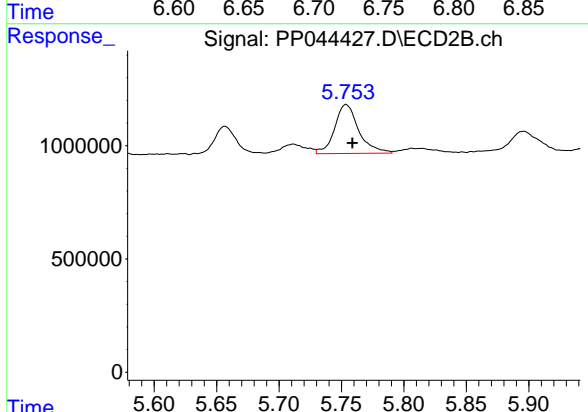
R.T.: 5.322 min
 Delta R.T.: -0.005 min
 Response: 1922038
 Conc: 26.72 ng/ml



#28 AR-1254-3

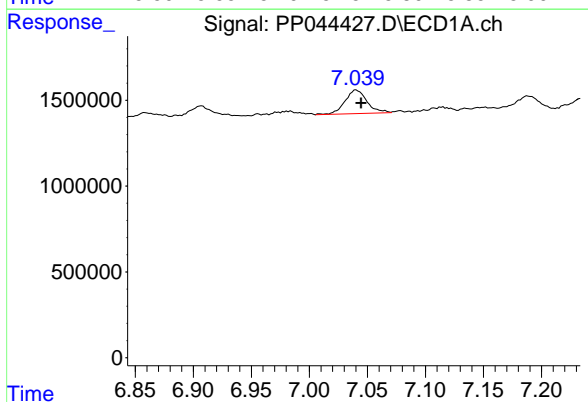
R.T.: 6.726 min
 Delta R.T.: -0.005 min
 Response: 2682095
 Conc: 22.92 ng/ml

Instrument : ECD_P
 ClientSampleId : LOD-MDL-WATER-01-QT1-2022



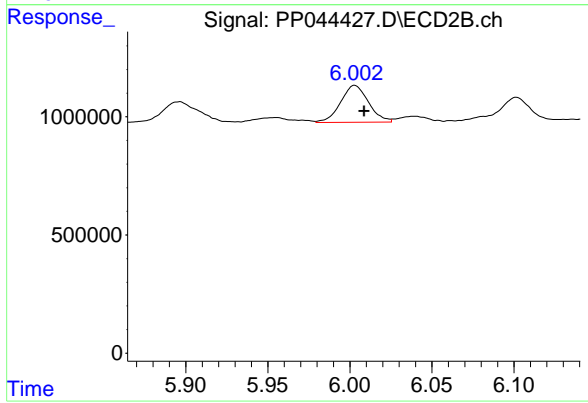
#28 AR-1254-3

R.T.: 5.754 min
 Delta R.T.: -0.005 min
 Response: 2912436
 Conc: 25.28 ng/ml



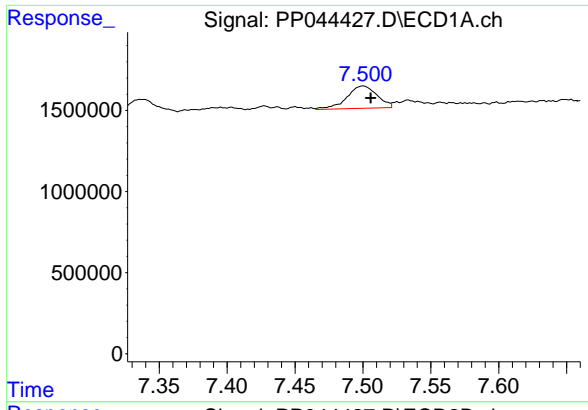
#29 AR-1254-4

R.T.: 7.040 min
 Delta R.T.: -0.004 min
 Response: 1806665
 Conc: 22.47 ng/ml



#29 AR-1254-4

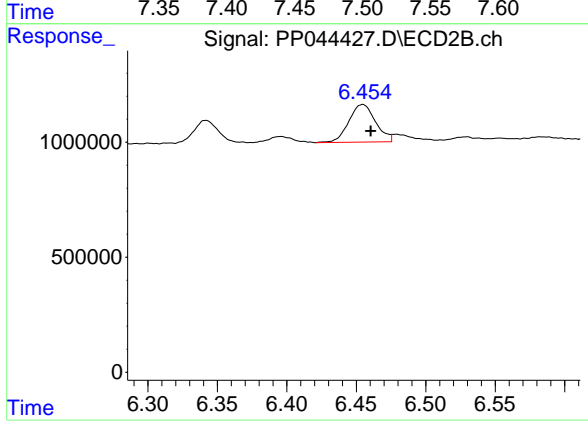
R.T.: 6.003 min
 Delta R.T.: -0.006 min
 Response: 1853009
 Conc: 24.61 ng/ml



#30 AR-1254-5

R.T.: 7.500 min
 Delta R.T.: -0.005 min
 Response: 2119479
 Conc: 24.35 ng/ml

Instrument :
 ECD_P
 ClientSampleId :
 LOD-MDL-WATER-01-QT1-2022



#30 AR-1254-5

R.T.: 6.455 min
 Delta R.T.: -0.006 min
 Response: 2196014
 Conc: 20.15 ng/ml