

Data Path : Z:\pestpcbsrv\HPCHEM1\ECD\_P\Data\PP031021\  
 Data File : PP033797.D  
 Signal(s) : Signal #1: ECD1A.CH Signal #2: ECD2B.CH  
 Acq On : 10 Mar 2021 8:57  
 Operator : DD\AJ  
 Sample : HEXANE  
 Misc :  
 ALS Vial : 1 Sample Multiplier: 1

Instrument :  
 ECD\_P  
 ClientSampleId :  
 HEXANE

Integration File signal 1: autoint1.e  
 Integration File signal 2: autoint2.e  
 Quant Time: Mar 11 01:10:31 2021  
 Quant Method : Z:\pestpcbsrv\HPCHEM1\ECD\_P\methods\PP030921.M  
 Quant Title : GC EXTRACTABLES  
 QLast Update : Wed Mar 10 03:01:34 2021  
 Response via : Initial Calibration  
 Integrator: ChemStation 6890 Scale Mode: Small noise peaks clipped

Volume Inj. : 2 µl  
 Signal #1 Phase : ZB-MR1 Signal #2 Phase: ZB-MR2  
 Signal #1 Info : 30Mx0.32mmx 0.50µ Signal #2 Info : 30M x 0.32mm x 0.25µm

Compound	RT#1	RT#2	Resp#1	Resp#2	ng/ml	ng/ml
----------	------	------	--------	--------	-------	-------

-----  
 System Monitoring Compounds

Target Compounds  
 -----

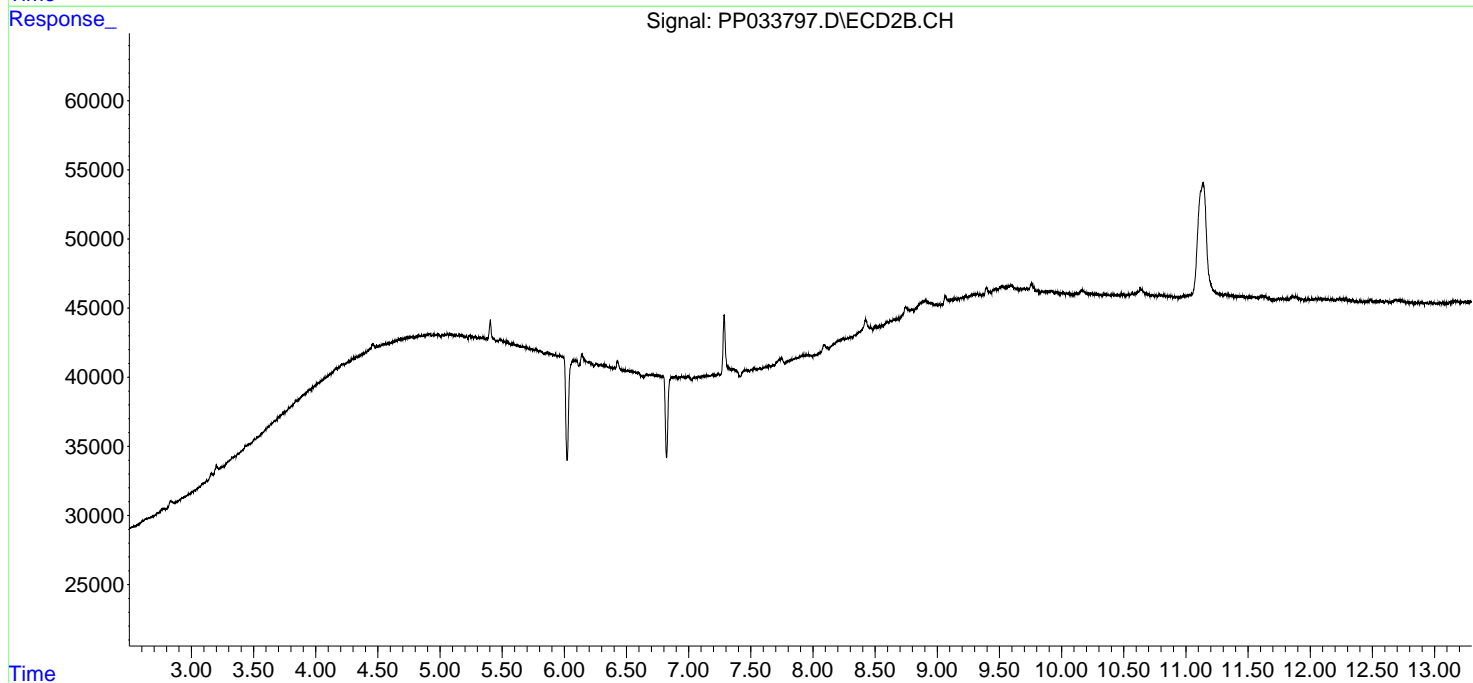
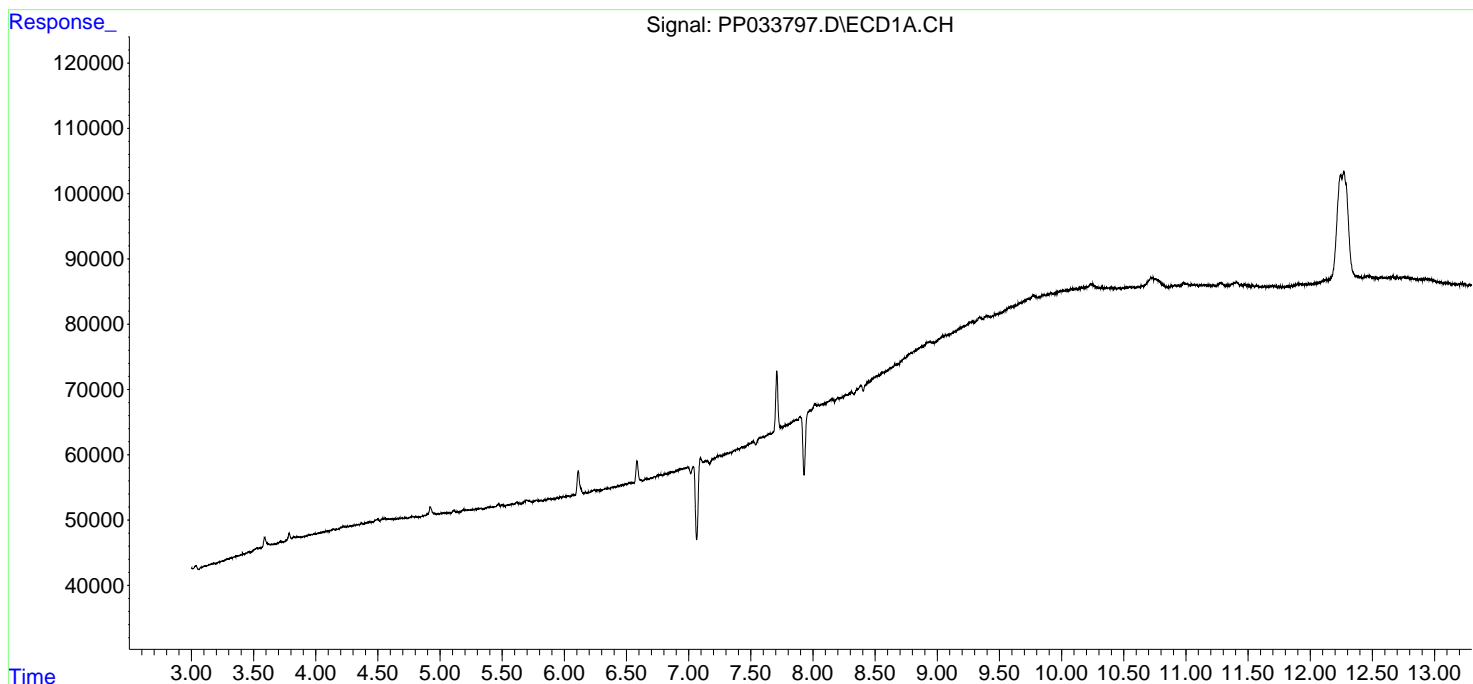
(f)=RT Delta > 1/2 Window (#)=Amounts differ by > 25% (m)=manual int.

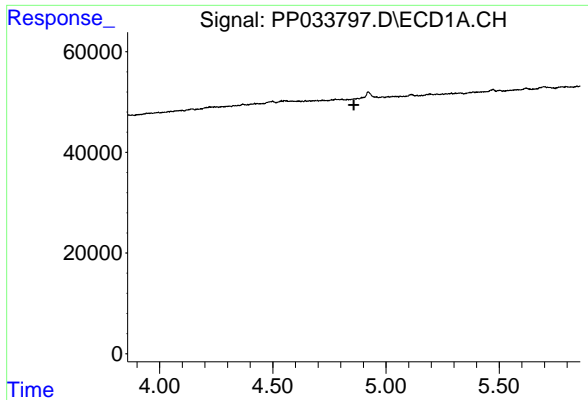
Data Path : Z:\pestpcbsrv\HPCHEM1\ECD\_P\Data\PP031021\  
 Data File : PP033797.D  
 Signal(s) : Signal #1: ECD1A.CH Signal #2: ECD2B.CH  
 Acq On : 10 Mar 2021 8:57  
 Operator : DD\AJ  
 Sample : HEXANE  
 Misc :  
 ALS Vial : 1 Sample Multiplier: 1

Instrument :  
 ECD\_P  
 ClientSampleId :  
 HEXANE

Integration File signal 1: autoint1.e  
 Integration File signal 2: autoint2.e  
 Quant Time: Mar 11 01:10:31 2021  
 Quant Method : Z:\pestpcbsrv\HPCHEM1\ECD\_P\methods\PP030921.M  
 Quant Title : GC EXTRACTABLES  
 QLast Update : Wed Mar 10 03:01:34 2021  
 Response via : Initial Calibration  
 Integrator: ChemStation 6890 Scale Mode: Small noise peaks clipped

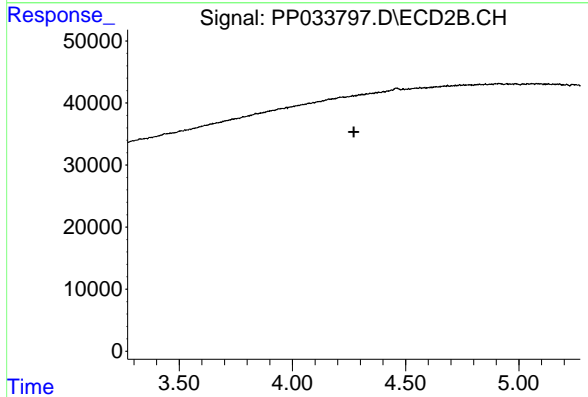
Volume Inj. : 2 µl  
 Signal #1 Phase : ZB-MR1 Signal #2 Phase: ZB-MR2  
 Signal #1 Info : 30Mx0.32mmx 0.50µ Signal #2 Info : 30M x 0.32mm x 0.25µm



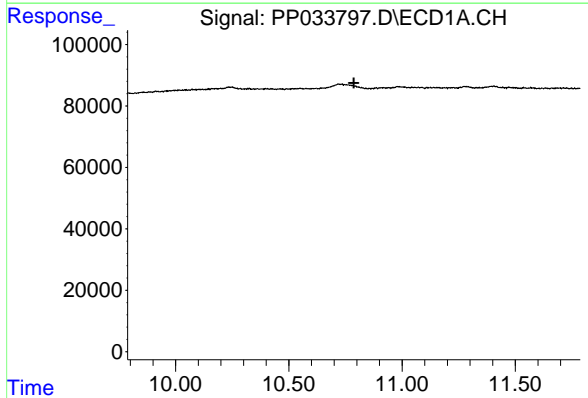


#1 Tetrachloro-m-xylene  
 R.T.: 0.000 min  
 Exp R.T. : 4.858 min  
 Response: 0  
 Conc: N.D.

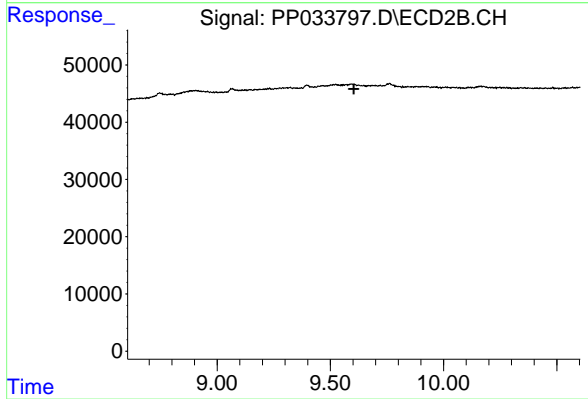
Instrument :  
 ECD\_P  
 ClientSampleId :  
 HEXANE



#1 Tetrachloro-m-xylene  
 R.T.: 0.000 min  
 Exp R.T. : 4.271 min  
 Response: 0  
 Conc: N.D.



#2 Decachlorobiphenyl  
 R.T.: 0.000 min  
 Exp R.T. : 10.787 min  
 Response: 0  
 Conc: N.D.



#2 Decachlorobiphenyl  
 R.T.: 0.000 min  
 Exp R.T. : 9.604 min  
 Response: 0  
 Conc: N.D.