

Data Path : Z:\pestpcbsrv\HPCHEM1\ECD\_P\Data\PP031021\  
 Data File : PP033802.D  
 Signal(s) : Signal #1: ECD1A.CH Signal #2: ECD2B.CH  
 Acq On : 10 Mar 2021 10:22  
 Operator : DD\AJ  
 Sample : M1458-01  
 Misc : AR1221 LOD 25 PPB  
 ALS Vial : 6 Sample Multiplier: 1

**Instrument :**  
 ECD\_P  
**Client Sampled :**  
 LOD-MDL-SOIL-01-QT1-2021

**Manual Integrations**  
**APPROVED**  
 Ankita  
 3/11/2021 3:47:16 PM

Integration File signal 1: autoint1.e  
 Integration File signal 2: autoint2.e  
 Quant Time: Mar 11 01:12:22 2021  
 Quant Method : Z:\pestpcbsrv\HPCHEM1\ECD\_P\methods\PP030921.M  
 Quant Title : GC EXTRACTABLES  
 QLast Update : Wed Mar 10 03:01:34 2021  
 Response via : Initial Calibration  
 Integrator: ChemStation 6890 Scale Mode: Small noise peaks clipped

Volume Inj. : 2 µl  
 Signal #1 Phase : ZB-MR1 Signal #2 Phase: ZB-MR2  
 Signal #1 Info : 30Mx0.32mmx 0.50µ Signal #2 Info : 30M x 0.32mm x 0.25µm

| Compound                    | RT#1   | RT#2  | Resp#1  | Resp#2 | ng/ml   | ng/ml    |
|-----------------------------|--------|-------|---------|--------|---------|----------|
| -----                       |        |       |         |        |         |          |
| System Monitoring Compounds |        |       |         |        |         |          |
| 1) SA Tetrachlo...          | 4.856  | 4.269 | 1588700 | 728827 | 18.361  | 17.940   |
| 2) SA Decachlor...          | 10.782 | 9.596 | 1674502 | 520548 | 19.827  | 19.507   |
| Target Compounds            |        |       |         |        |         |          |
| 8) L2 AR-1221-1             | 5.105  | 4.526 | 20584   | 11876  | 22.306  | 27.891m# |
| 9) L2 AR-1221-2             | 5.203  | 4.625 | 38296   | 15286  | 54.501  | 47.241   |
| 10) L2 AR-1221-3            | 5.288  | 4.715 | 55256   | 22747  | 26.252m | 23.206   |
| -----                       |        |       |         |        |         |          |

(f)=RT Delta > 1/2 Window (#)=Amounts differ by > 25% (m)=manual int.

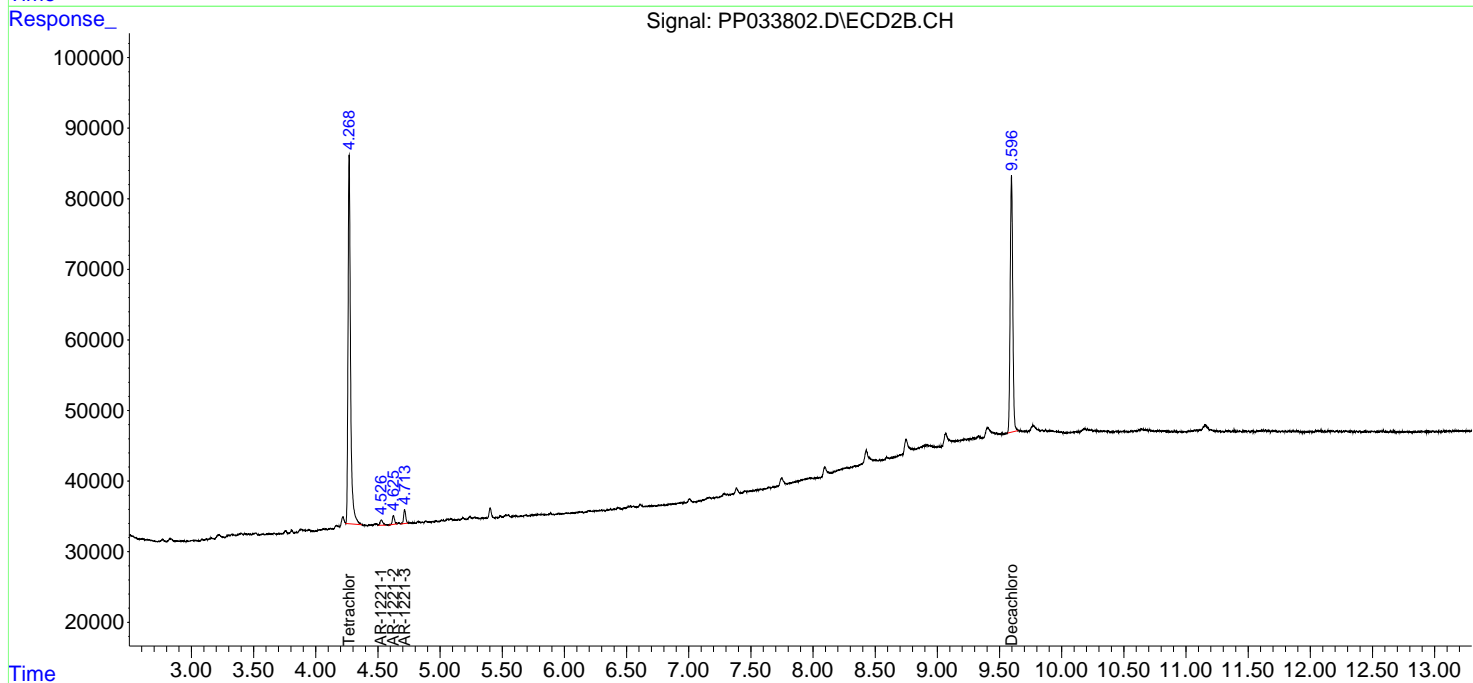
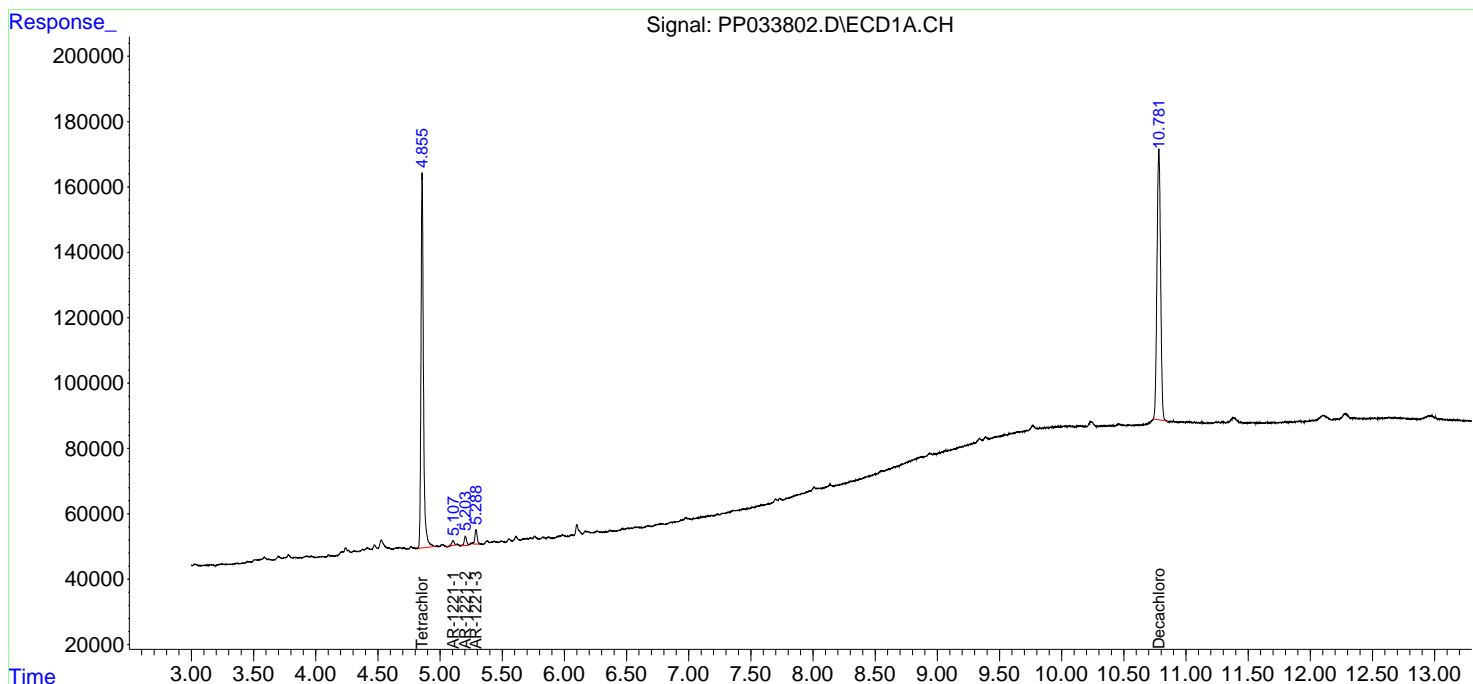
Data Path : Z:\pestpcbsrv\HPCHEM1\ECD\_P\Data\PP031021\  
 Data File : PP033802.D  
 Signal(s) : Signal #1: ECD1A.CH Signal #2: ECD2B.CH  
 Acq On : 10 Mar 2021 10:22  
 Operator : DD\AJ  
 Sample : M1458-01  
 Misc : AR1221 LOD 25 PPB  
 ALS Vial : 6 Sample Multiplier: 1

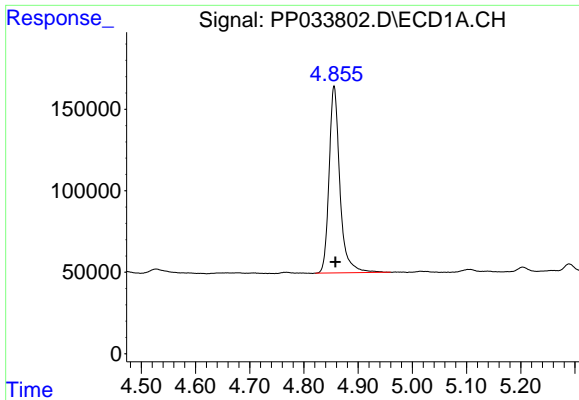
**Instrument :**  
 ECD\_P  
**Client Sampled :**  
 LOD-MDL-SOIL-01-QT1-2021

**Manual Integrations**  
**APPROVED**  
 Ankita  
 3/11/2021 3:47:16 PM

Integration File signal 1: autoint1.e  
 Integration File signal 2: autoint2.e  
 Quant Time: Mar 11 01:12:22 2021  
 Quant Method : Z:\pestpcbsrv\HPCHEM1\ECD\_P\methods\PP030921.M  
 Quant Title : GC EXTRACTABLES  
 QLast Update : Wed Mar 10 03:01:34 2021  
 Response via : Initial Calibration  
 Integrator: ChemStation 6890 Scale Mode: Small noise peaks clipped

Volume Inj. : 2 µl  
 Signal #1 Phase : ZB-MR1 Signal #2 Phase: ZB-MR2  
 Signal #1 Info : 30Mx0.32mmx 0.50µ Signal #2 Info : 30M x 0.32mm x 0.25µm

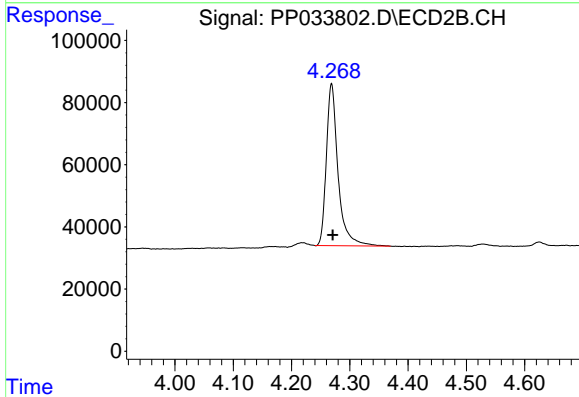




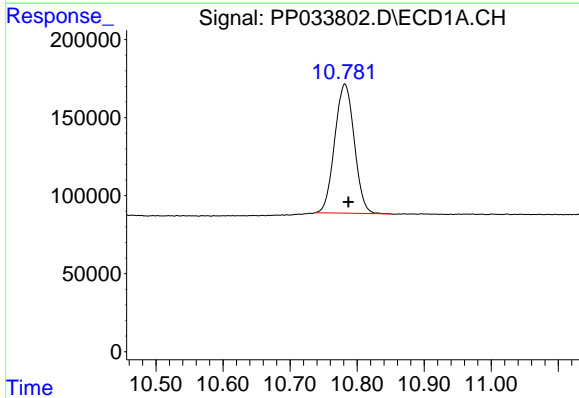
#1 Tetrachloro-m-xylene  
 R.T.: 4.856 min  
 Delta R.T.: -0.002 min  
 Response: 1588700  
 Conc: 18.36 ng/ml

Instrument :  
 ECD\_P  
 ClientSampleId :  
 LOD-MDL-SOIL-01-QT1-2021

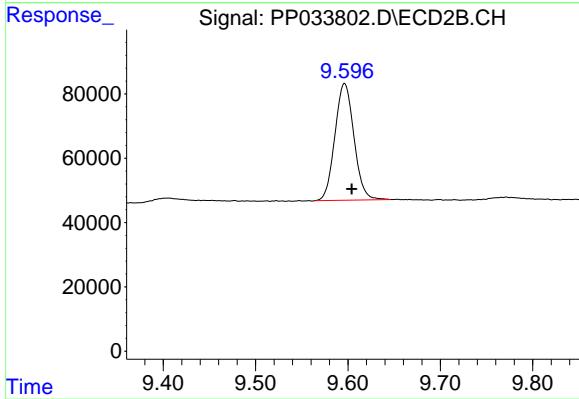
Manual Integrations  
 APPROVED  
 Ankita  
 3/11/2021 3:47:16 PM



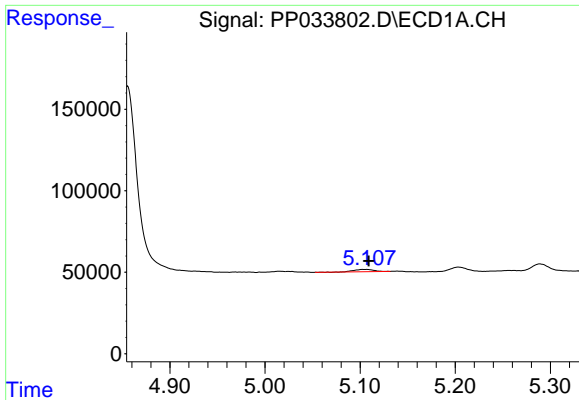
#1 Tetrachloro-m-xylene  
 R.T.: 4.269 min  
 Delta R.T.: -0.002 min  
 Response: 728827  
 Conc: 17.94 ng/ml



#2 Decachlorobiphenyl  
 R.T.: 10.782 min  
 Delta R.T.: -0.005 min  
 Response: 1674502  
 Conc: 19.83 ng/ml



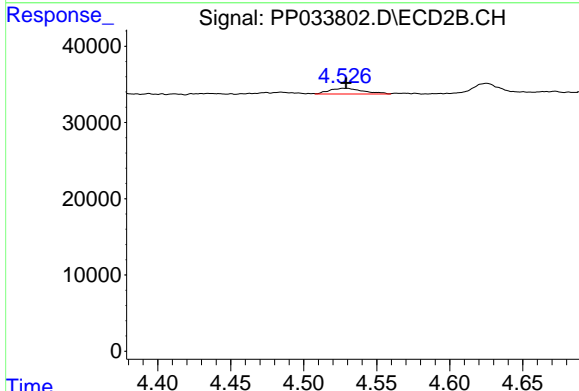
#2 Decachlorobiphenyl  
 R.T.: 9.596 min  
 Delta R.T.: -0.008 min  
 Response: 520548  
 Conc: 19.51 ng/ml



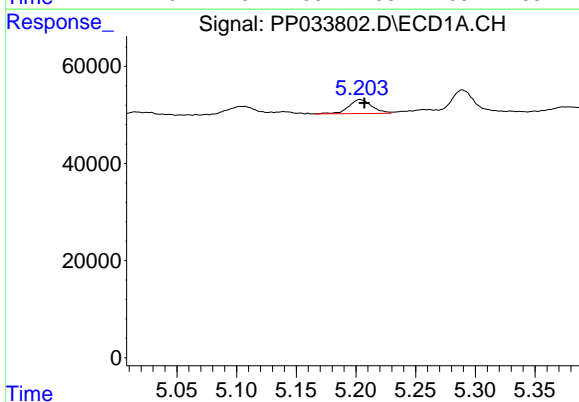
#8 AR-1221-1  
 R.T.: 5.105 min  
 Delta R.T.: -0.004 min  
 Response: 20584  
 Conc: 22.31 ng/ml

**Instrument :**  
 ECD\_P  
**ClientSampleId :**  
 LOD-MDL-SOIL-01-QT1-2021

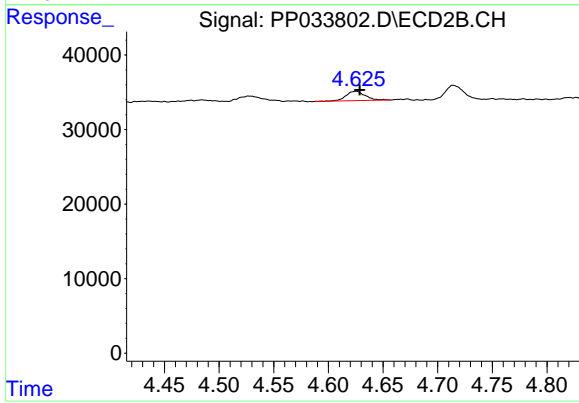
**Manual Integrations**  
**APPROVED**  
 Ankita  
 3/11/2021 3:47:16 PM



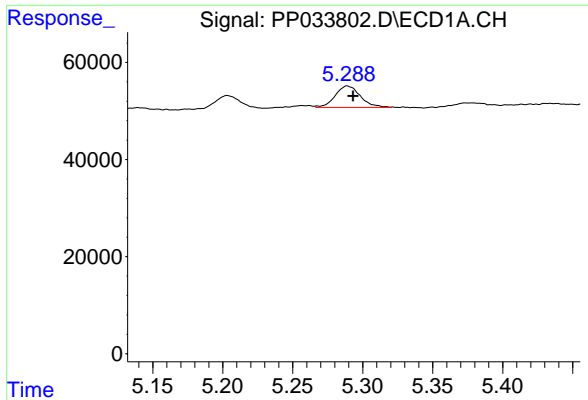
#8 AR-1221-1  
 R.T.: 4.526 min  
 Delta R.T.: -0.003 min  
 Response: 11876  
 Conc: 27.89 ng/ml m



#9 AR-1221-2  
 R.T.: 5.203 min  
 Delta R.T.: -0.003 min  
 Response: 38296  
 Conc: 54.50 ng/ml



#9 AR-1221-2  
 R.T.: 4.625 min  
 Delta R.T.: -0.004 min  
 Response: 15286  
 Conc: 47.24 ng/ml



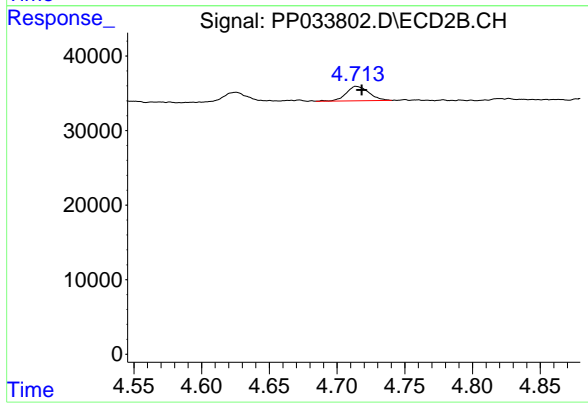
#10 AR-1221-3

R.T.: 5.288 min  
Delta R.T.: -0.005 min  
Response: 55256  
Conc: 26.25 ng/ml m

Instrument :  
ECD\_P  
ClientSampleId :  
LOD-MDL-SOIL-01-QT1-2021

Manual Integrations  
APPROVED

Ankita  
3/11/2021 3:47:16 PM



#10 AR-1221-3

R.T.: 4.715 min  
Delta R.T.: -0.004 min  
Response: 22747  
Conc: 23.21 ng/ml