

Data Path : Z:\pestpcbsrv\HPCHEM1\ECD_P\Data\PP031021\
 Data File : PP033835.D
 Signal(s) : Signal #1: ECD1A.CH Signal #2: ECD2B.CH
 Acq On : 10 Mar 2021 20:14
 Operator : DD\AJ
 Sample : M1458-02
 Misc : AR1232 LOQ 50 PPB
 ALS Vial : 15 Sample Multiplier: 1

Instrument :
 ECD_P
ClientSampleId :
 LOQ-SOIL-02-QT1-2021

Integration File signal 1: autoint1.e
 Integration File signal 2: autoint2.e
 Quant Time: Mar 11 01:21:14 2021
 Quant Method : Z:\pestpcbsrv\HPCHEM1\ECD_P\methods\PP030921.M
 Quant Title : GC EXTRACTABLES
 QLast Update : Wed Mar 10 03:01:34 2021
 Response via : Initial Calibration
 Integrator: ChemStation 6890 Scale Mode: Small noise peaks clipped

Volume Inj. : 2 µl
 Signal #1 Phase : ZB-MR2 Signal #2 Phase: ZB-MR2
 Signal #1 Info : 30Mx0.32mmx 0.50µ Signal #2 Info : 30M x 0.32mm x 0.25µm

Compound	RT#1	RT#2	Resp#1	Resp#2	ng/ml	ng/ml

System Monitoring Compounds						
1) SA Tetrachlo...	4.856	4.268	1803041	849073	20.838	20.900
2) SA Decachlor...	10.782	9.595	1759003	576404	20.828	21.600
Target Compounds						
11) L3 AR-1232-1	5.290	4.714	95753	39223	55.345	48.280
12) L3 AR-1232-2	5.875	5.546	48144	33878	52.568	46.749
13) L3 AR-1232-3	6.192	5.740	88863	18424	52.574	47.909
14) L3 AR-1232-4	6.364	5.833	45498	13580	53.261	40.717
15) L3 AR-1232-5	6.463	6.020	32540	13825	54.852	38.147 #

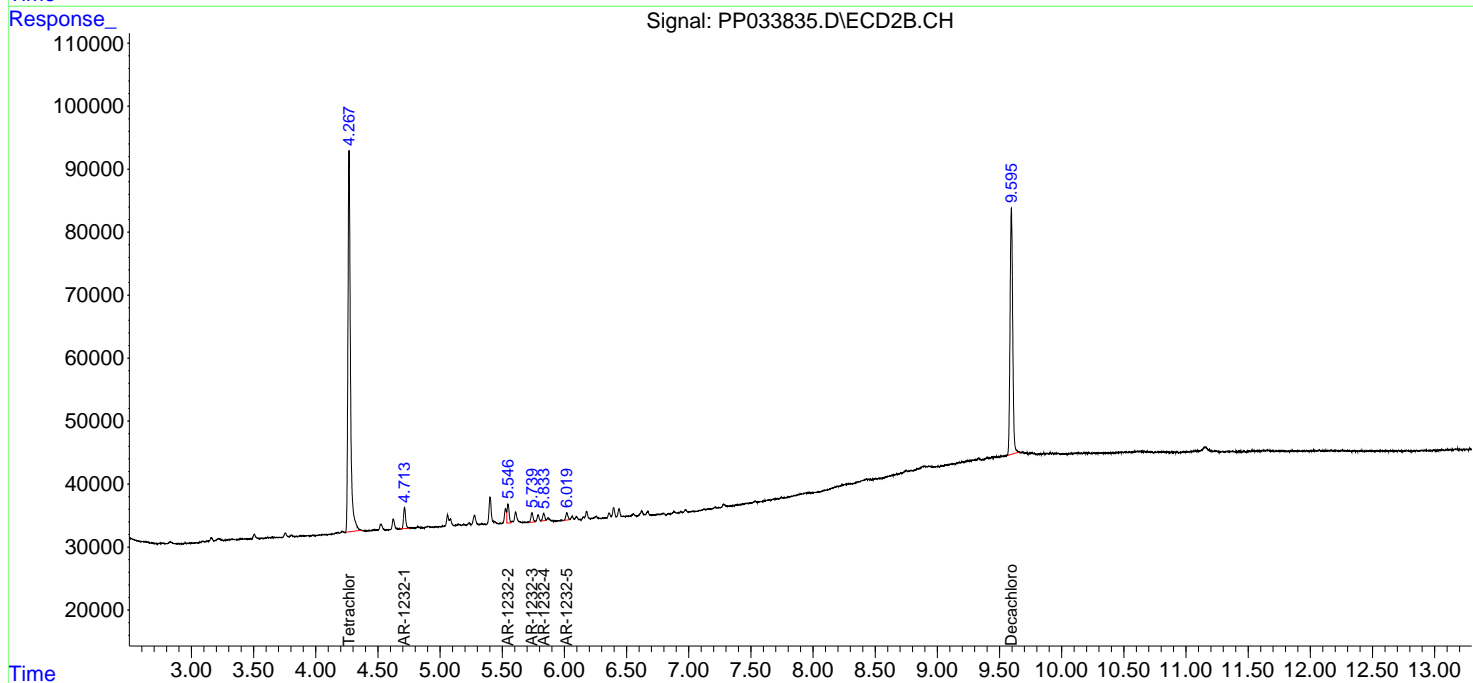
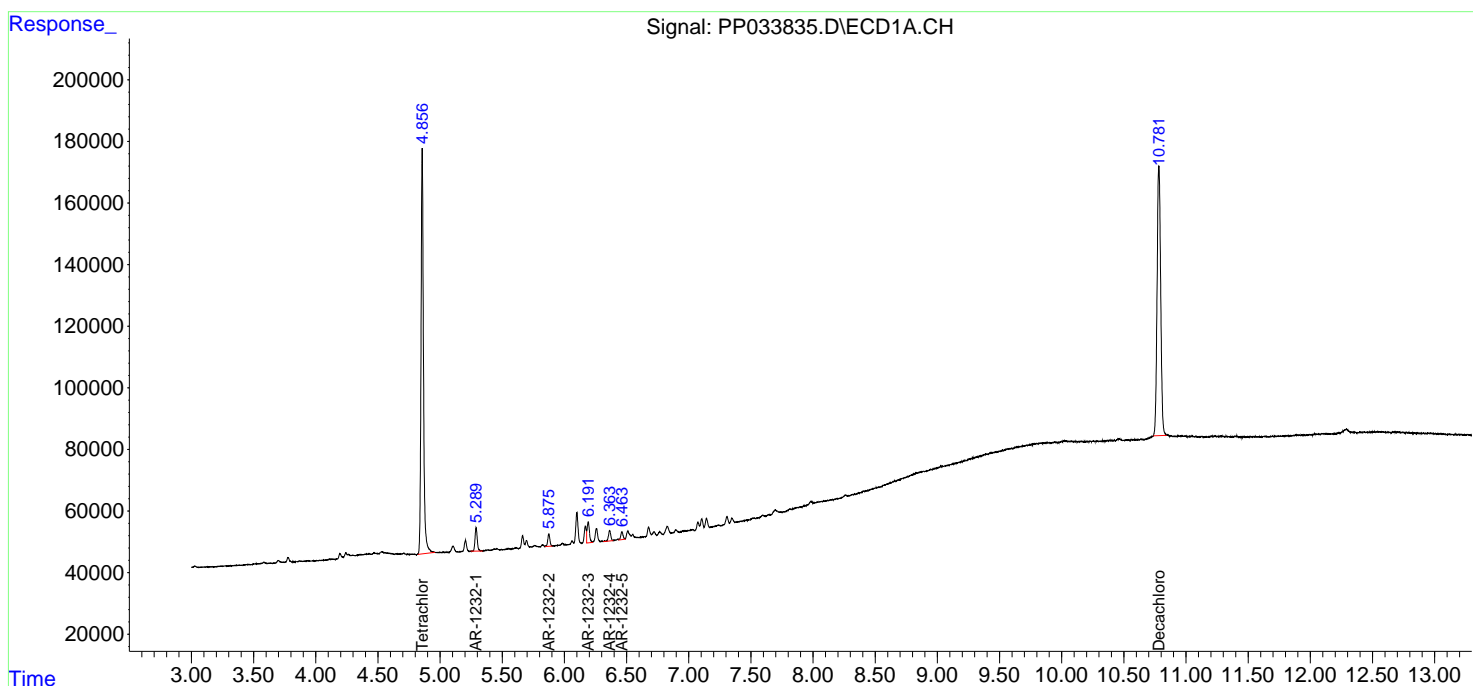
(f)=RT Delta > 1/2 Window (#)=Amounts differ by > 25% (m)=manual int.

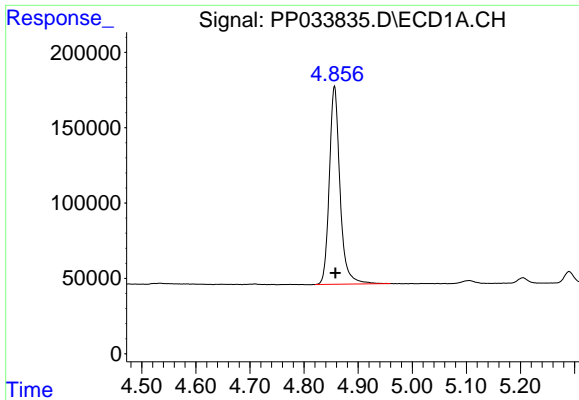
Data Path : Z:\pestpcbsrv\HPCHEM1\ECD_P\Data\PP031021\
 Data File : PP033835.D
 Signal(s) : Signal #1: ECD1A.CH Signal #2: ECD2B.CH
 Acq On : 10 Mar 2021 20:14
 Operator : DD\AJ
 Sample : M1458-02
 Misc : AR1232 LOQ 50 PPB
 ALS Vial : 15 Sample Multiplier: 1

Instrument :
 ECD_P
ClientSampled :
 LOQ-SOIL-02-QT1-2021

Integration File signal 1: autoint1.e
 Integration File signal 2: autoint2.e
 Quant Time: Mar 11 01:21:14 2021
 Quant Method : Z:\pestpcbsrv\HPCHEM1\ECD_P\methods\PP030921.M
 Quant Title : GC EXTRACTABLES
 QLast Update : Wed Mar 10 03:01:34 2021
 Response via : Initial Calibration
 Integrator: ChemStation 6890 Scale Mode: Small noise peaks clipped

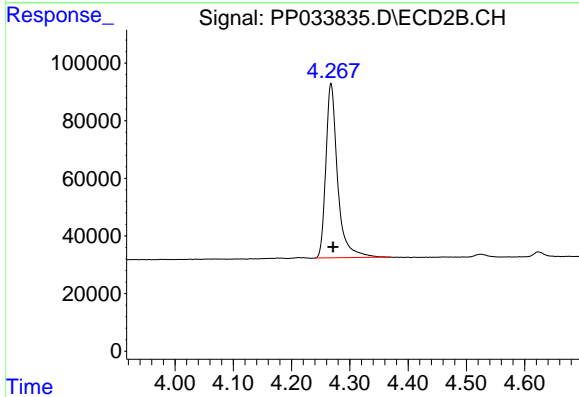
Volume Inj. : 2 µl
 Signal #1 Phase : ZB-MR1 Signal #2 Phase: ZB-MR2
 Signal #1 Info : 30Mx0.32mmx 0.50µ Signal #2 Info : 30M x 0.32mm x 0.25µm



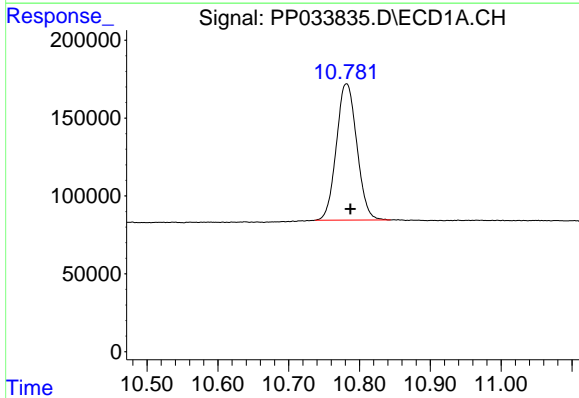


#1 Tetrachloro-m-xylene
 R.T.: 4.856 min
 Delta R.T.: -0.002 min
 Response: 1803041
 Conc: 20.84 ng/ml

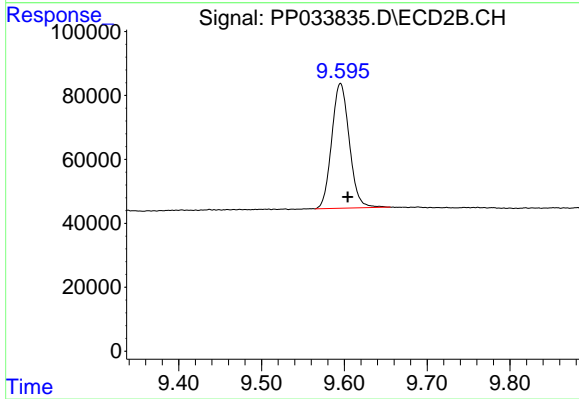
Instrument :
 ECD_P
 ClientSampleId :
 LOQ-SOIL-02-QT1-2021



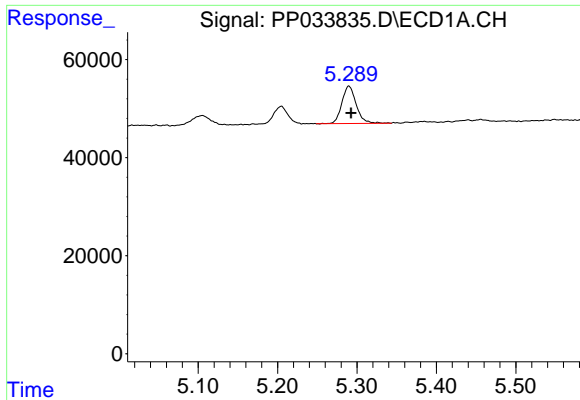
#1 Tetrachloro-m-xylene
 R.T.: 4.268 min
 Delta R.T.: -0.003 min
 Response: 849073
 Conc: 20.90 ng/ml



#2 Decachlorobiphenyl
 R.T.: 10.782 min
 Delta R.T.: -0.005 min
 Response: 1759003
 Conc: 20.83 ng/ml



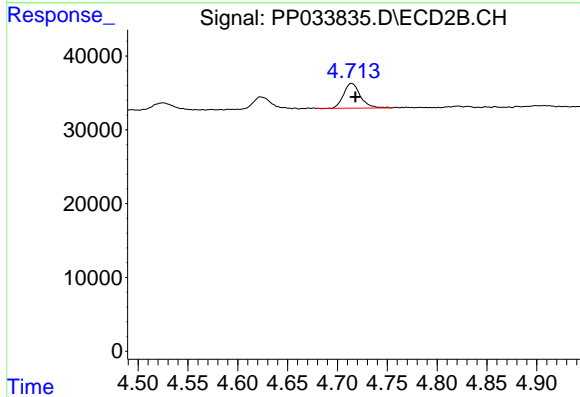
#2 Decachlorobiphenyl
 R.T.: 9.595 min
 Delta R.T.: -0.009 min
 Response: 576404
 Conc: 21.60 ng/ml



#11 AR-1232-1

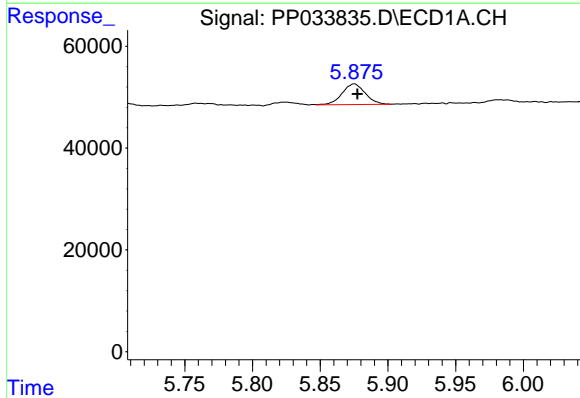
R.T.: 5.290 min
 Delta R.T.: -0.003 min
 Response: 95753
 Conc: 55.35 ng/ml

Instrument :
 ECD_P
 ClientSampleId :
 LOQ-SOIL-02-QT1-2021



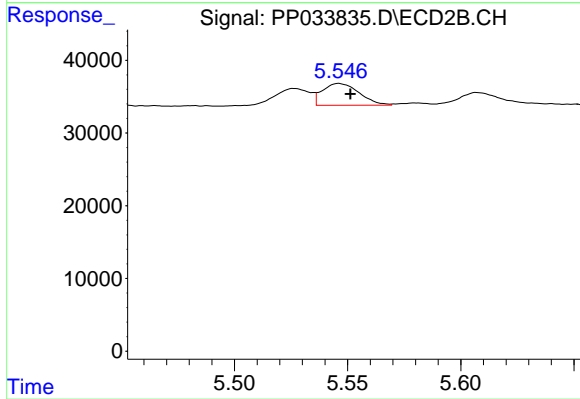
#11 AR-1232-1

R.T.: 4.714 min
 Delta R.T.: -0.004 min
 Response: 39223
 Conc: 48.28 ng/ml



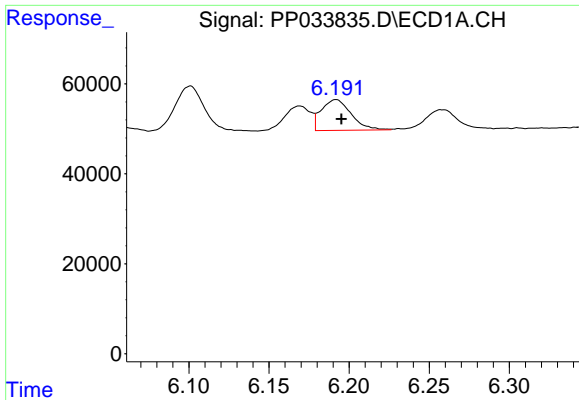
#12 AR-1232-2

R.T.: 5.875 min
 Delta R.T.: -0.002 min
 Response: 48144
 Conc: 52.57 ng/ml



#12 AR-1232-2

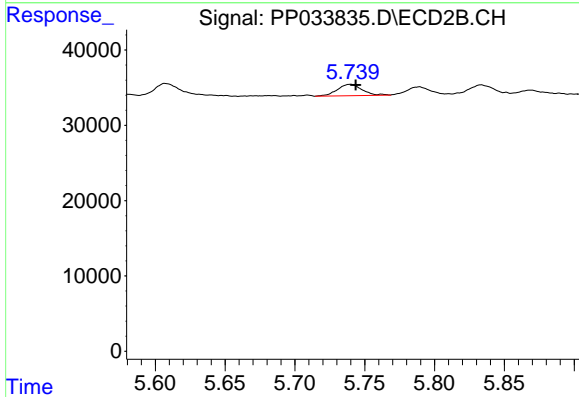
R.T.: 5.546 min
 Delta R.T.: -0.005 min
 Response: 33878
 Conc: 46.75 ng/ml



#13 AR-1232-3

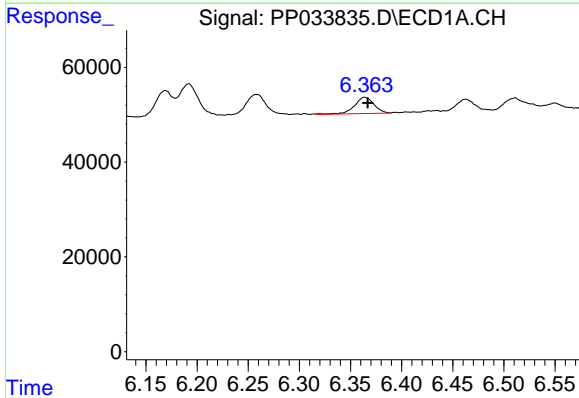
R.T.: 6.192 min
 Delta R.T.: -0.003 min
 Response: 88863
 Conc: 52.57 ng/ml

Instrument :
 ECD_P
ClientSampleId :
 LOQ-SOIL-02-QT1-2021



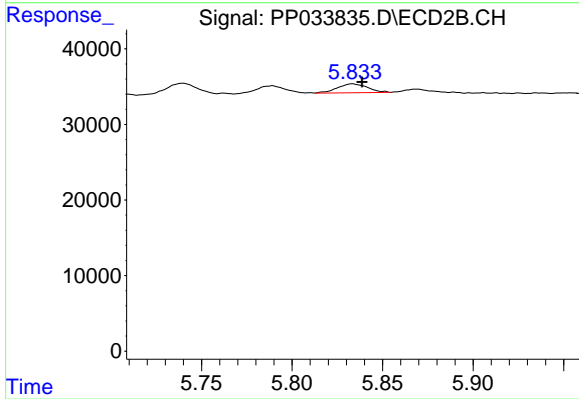
#13 AR-1232-3

R.T.: 5.740 min
 Delta R.T.: -0.004 min
 Response: 18424
 Conc: 47.91 ng/ml



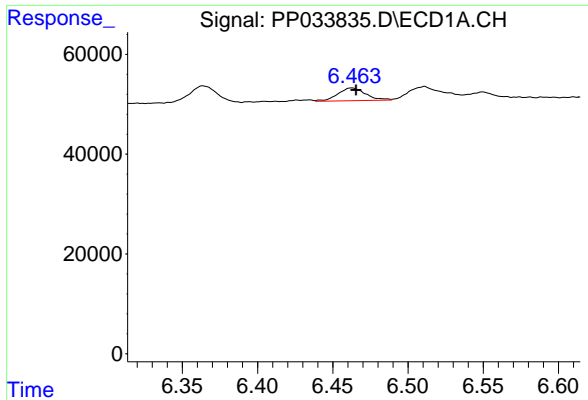
#14 AR-1232-4

R.T.: 6.364 min
 Delta R.T.: -0.003 min
 Response: 45498
 Conc: 53.26 ng/ml



#14 AR-1232-4

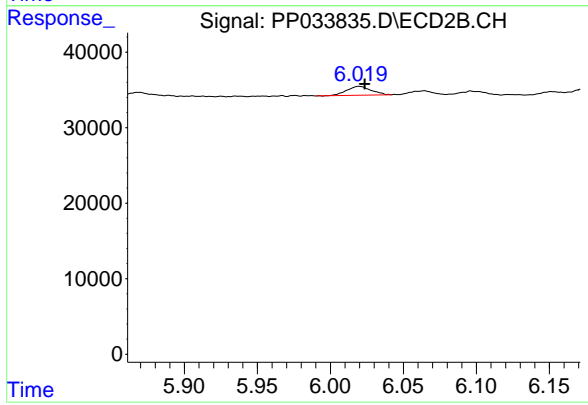
R.T.: 5.833 min
 Delta R.T.: -0.005 min
 Response: 13580
 Conc: 40.72 ng/ml



#15 AR-1232-5

R.T.: 6.463 min
Delta R.T.: -0.003 min
Response: 32540
Conc: 54.85 ng/ml

Instrument :
ECD_P
ClientSampleId :
LOQ-SOIL-02-QT1-2021



#15 AR-1232-5

R.T.: 6.020 min
Delta R.T.: -0.004 min
Response: 13825
Conc: 38.15 ng/ml