

Data Path : Z:\pestpcbsrv\HPCHEM1\ECD\_P\Data\PP031021\  
 Data File : PP033839.D  
 Signal(s) : Signal #1: ECD1A.CH Signal #2: ECD2B.CH  
 Acq On : 10 Mar 2021 21:22  
 Operator : DD\AJ  
 Sample : M1458-02  
 Misc : AR1262 LOQ 50 PPB  
 ALS Vial : 19 Sample Multiplier: 1

**Instrument :**  
 ECD\_P  
**ClientSampleId :**  
 LOQ-SOIL-02-QT1-2021

**Manual Integrations**  
**APPROVED**  
 Ankita  
 3/11/2021 3:47:58 PM

Integration File signal 1: autoint1.e  
 Integration File signal 2: autoint2.e  
 Quant Time: Mar 11 01:22:18 2021  
 Quant Method : Z:\pestpcbsrv\HPCHEM1\ECD\_P\methods\PP030921.M  
 Quant Title : GC EXTRACTABLES  
 QLast Update : Wed Mar 10 03:01:34 2021  
 Response via : Initial Calibration  
 Integrator: ChemStation 6890 Scale Mode: Small noise peaks clipped

Volume Inj. : 2 µl  
 Signal #1 Phase : ZB-MR1 Signal #2 Phase: ZB-MR2  
 Signal #1 Info : 30Mx0.32mmx 0.50µ Signal #2 Info : 30M x 0.32mm x 0.25µm

Compound	RT#1	RT#2	Resp#1	Resp#2	ng/ml	ng/ml
-----						
System Monitoring Compounds						
1) SA Tetrachlo...	4.857	4.269	1609859	769194	18.606	18.934
2) SA Decachlor...	10.783	9.595	1639772	531749	19.416	19.927
Target Compounds						
36) L8 AR-1262-1	8.479	7.638	280464	62180	58.944	58.494
37) L8 AR-1262-2	9.026	8.184	483688	197463	55.960	59.259
38) L8 AR-1262-3	9.328	8.470	335950	84466	55.356	59.145
39) L8 AR-1262-4	9.420	8.534	296324	150586	59.782	59.728
40) L8 AR-1262-5	10.063	9.031	176601	73982	53.656m	64.903
-----						

(f)=RT Delta > 1/2 Window (#)=Amounts differ by > 25% (m)=manual int.

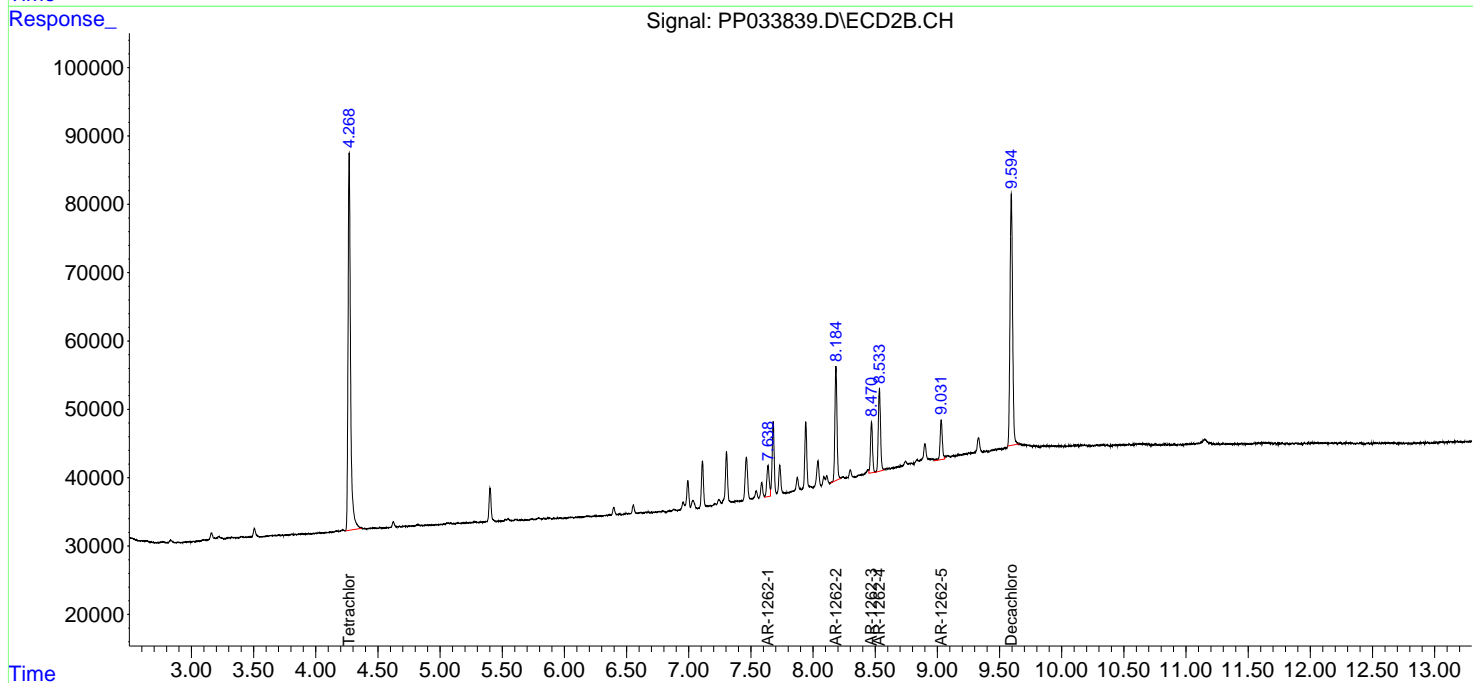
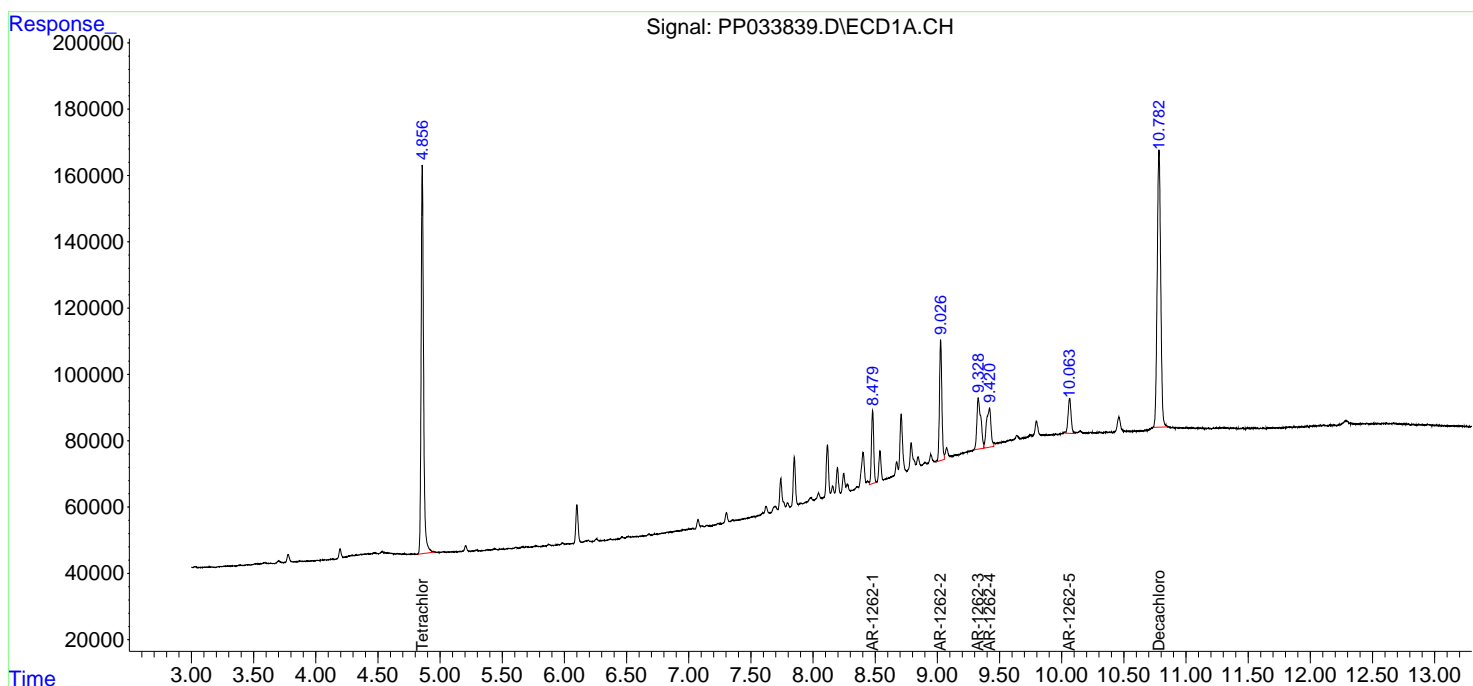
Data Path : Z:\pestpcbsrv\HPCHEM1\ECD\_P\Data\PP031021\  
 Data File : PP033839.D  
 Signal(s) : Signal #1: ECD1A.CH Signal #2: ECD2B.CH  
 Acq On : 10 Mar 2021 21:22  
 Operator : DD\AJ  
 Sample : M1458-02  
 Misc : AR1262 LOQ 50 PPB  
 ALS Vial : 19 Sample Multiplier: 1

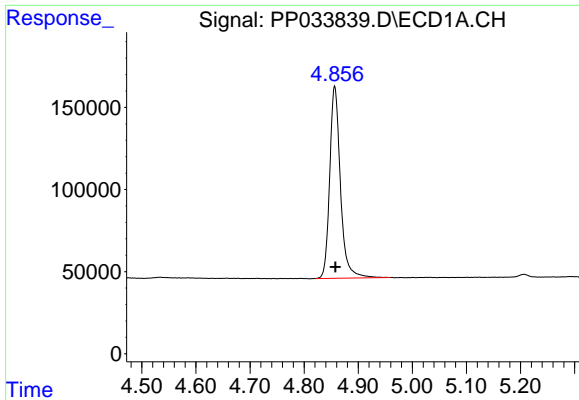
**Instrument :**  
 ECD\_P  
**Client Sampled :**  
 LOQ-SOIL-02-QT1-2021

**Manual Integrations**  
**APPROVED**  
 Ankita  
 3/11/2021 3:47:58 PM

Integration File signal 1: autoint1.e  
 Integration File signal 2: autoint2.e  
 Quant Time: Mar 11 01:22:18 2021  
 Quant Method : Z:\pestpcbsrv\HPCHEM1\ECD\_P\methods\PP030921.M  
 Quant Title : GC EXTRACTABLES  
 QLast Update : Wed Mar 10 03:01:34 2021  
 Response via : Initial Calibration  
 Integrator: ChemStation 6890 Scale Mode: Small noise peaks clipped

Volume Inj. : 2 µl  
 Signal #1 Phase : ZB-MR1 Signal #2 Phase: ZB-MR2  
 Signal #1 Info : 30Mx0.32mmx 0.50µ Signal #2 Info : 30M x 0.32mm x 0.25µm

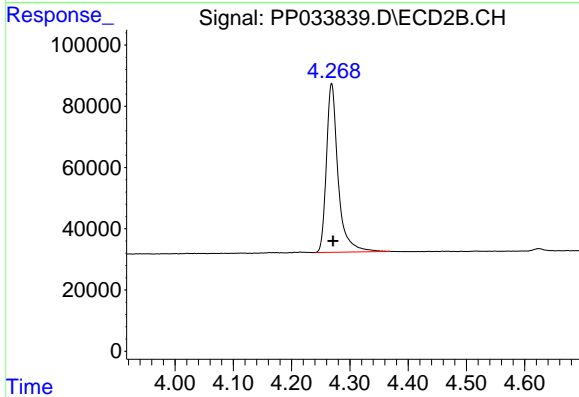




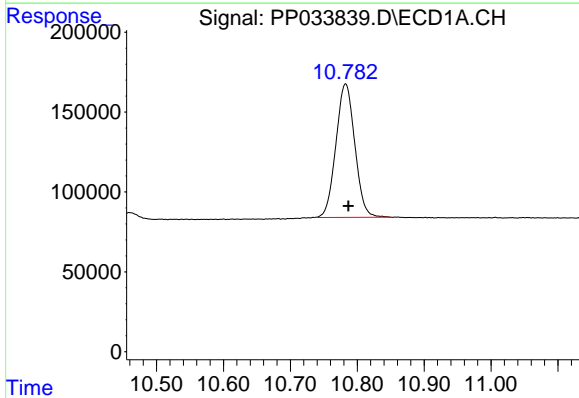
#1 Tetrachloro-m-xylene  
 R.T.: 4.857 min  
 Delta R.T.: -0.001 min  
 Response: 1609859  
 Conc: 18.61 ng/ml

Instrument :  
 ECD\_P  
 ClientSampleId :  
 LOQ-SOIL-02-QT1-2021

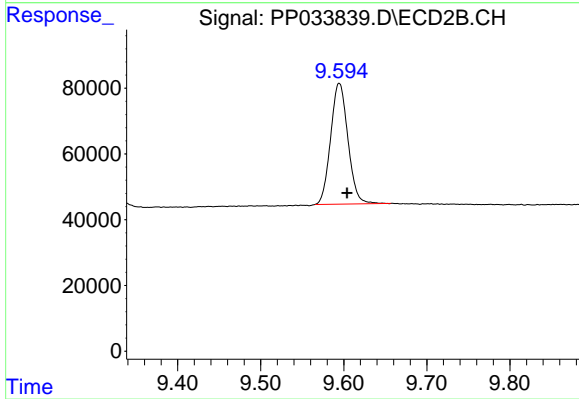
Manual Integrations  
 APPROVED  
 Ankita  
 3/11/2021 3:47:58 PM



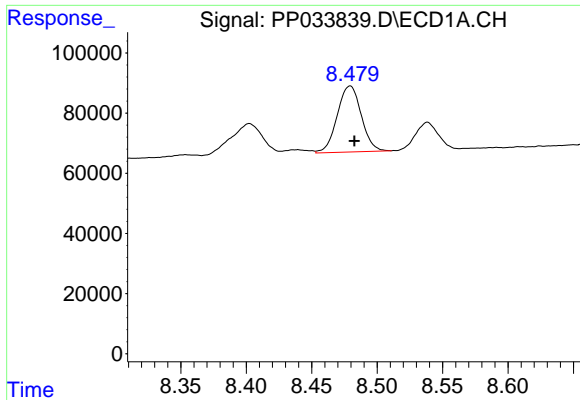
#1 Tetrachloro-m-xylene  
 R.T.: 4.269 min  
 Delta R.T.: -0.002 min  
 Response: 769194  
 Conc: 18.93 ng/ml



#2 Decachlorobiphenyl  
 R.T.: 10.783 min  
 Delta R.T.: -0.004 min  
 Response: 1639772  
 Conc: 19.42 ng/ml



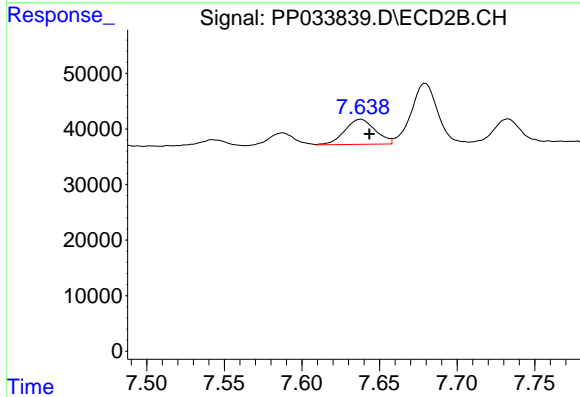
#2 Decachlorobiphenyl  
 R.T.: 9.595 min  
 Delta R.T.: -0.009 min  
 Response: 531749  
 Conc: 19.93 ng/ml



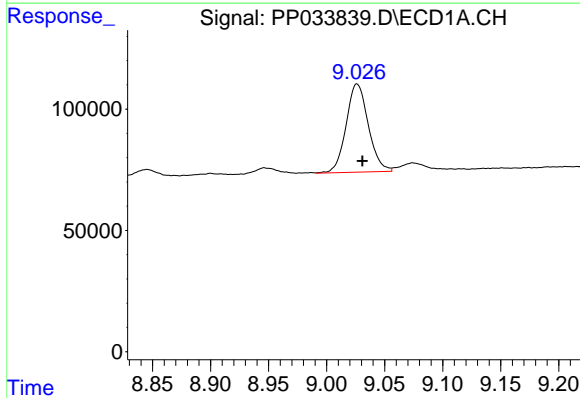
#36 AR-1262-1  
 R.T.: 8.479 min  
 Delta R.T.: -0.003 min  
 Response: 280464  
 Conc: 58.94 ng/ml

**Instrument :**  
 ECD\_P  
**ClientSampled :**  
 LOQ-SOIL-02-QT1-2021

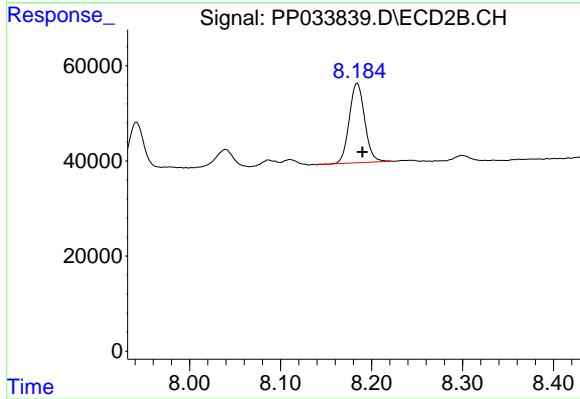
**Manual Integrations**  
**APPROVED**  
 Ankita  
 3/11/2021 3:47:58 PM



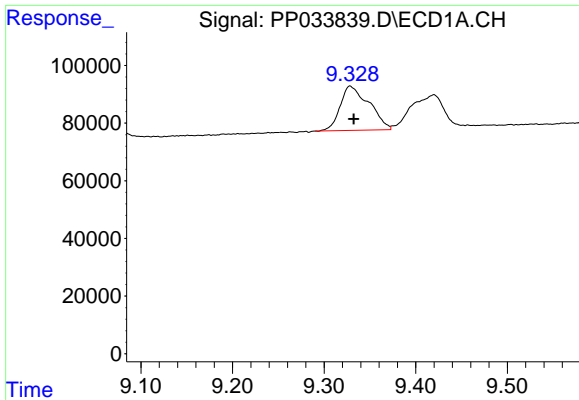
#36 AR-1262-1  
 R.T.: 7.638 min  
 Delta R.T.: -0.006 min  
 Response: 62180  
 Conc: 58.49 ng/ml



#37 AR-1262-2  
 R.T.: 9.026 min  
 Delta R.T.: -0.005 min  
 Response: 483688  
 Conc: 55.96 ng/ml



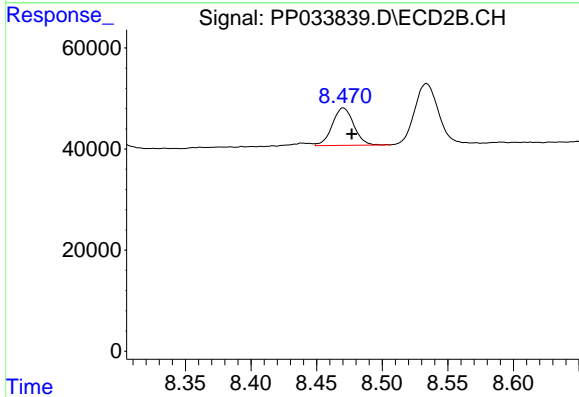
#37 AR-1262-2  
 R.T.: 8.184 min  
 Delta R.T.: -0.006 min  
 Response: 197463  
 Conc: 59.26 ng/ml



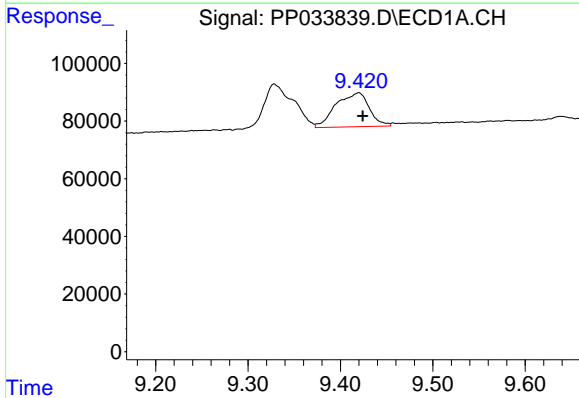
#38 AR-1262-3  
 R.T.: 9.328 min  
 Delta R.T.: -0.004 min  
 Response: 335950  
 Conc: 55.36 ng/ml

**Instrument :**  
 ECD\_P  
**ClientSampleId :**  
 LOQ-SOIL-02-QT1-2021

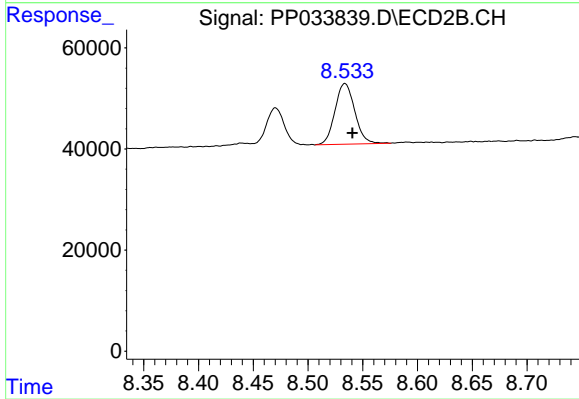
**Manual Integrations**  
**APPROVED**  
 Ankita  
 3/11/2021 3:47:58 PM



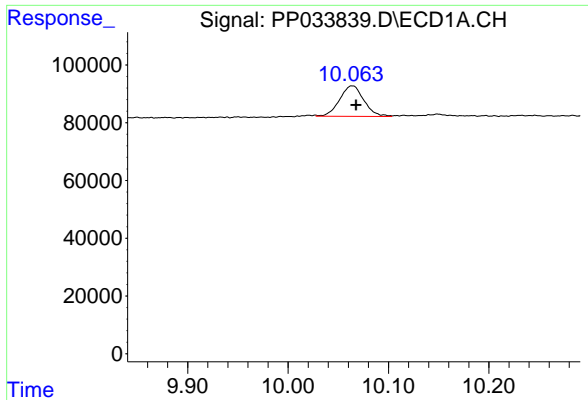
#38 AR-1262-3  
 R.T.: 8.470 min  
 Delta R.T.: -0.006 min  
 Response: 84466  
 Conc: 59.15 ng/ml



#39 AR-1262-4  
 R.T.: 9.420 min  
 Delta R.T.: -0.004 min  
 Response: 296324  
 Conc: 59.78 ng/ml



#39 AR-1262-4  
 R.T.: 8.534 min  
 Delta R.T.: -0.007 min  
 Response: 150586  
 Conc: 59.73 ng/ml



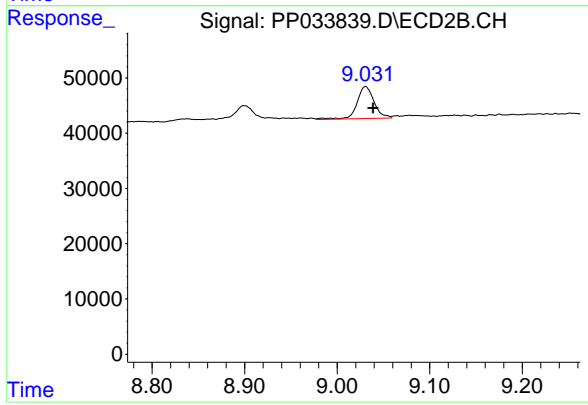
#40 AR-1262-5

R.T.: 10.063 min  
 Delta R.T.: -0.005 min  
 Response: 176601  
 Conc: 53.66 ng/ml m

**Instrument :**  
 ECD\_P  
**ClientSampleId :**  
 LOQ-SOIL-02-QT1-2021

**Manual Integrations**  
**APPROVED**

Ankita  
 3/11/2021 3:47:58 PM



#40 AR-1262-5

R.T.: 9.031 min  
 Delta R.T.: -0.008 min  
 Response: 73982  
 Conc: 64.90 ng/ml