

Data Path : Z:\pestpcbsrv\HPCHEM1\ECD_P\Data\PP031021\
 Data File : PP033869.D
 Signal(s) : Signal #1: ECD1A.CH Signal #2: ECD2B.CH
 Acq On : 11 Mar 2021 7:11
 Operator : DD\AJ
 Sample : M1458-09
 Misc : AR1242 MDL 25 PPB
 ALS Vial : 43 Sample Multiplier: 1

Instrument :
 ECD_P
ClientSampleId :
 MDL-WATER-03-QT1-2021

Integration File signal 1: autoint1.e
 Integration File signal 2: autoint2.e
 Quant Time: Mar 11 07:32:45 2021
 Quant Method : Z:\pestpcbsrv\HPCHEM1\ECD_P\methods\PP030921.M
 Quant Title : GC EXTRACTABLES
 QLast Update : Wed Mar 10 03:01:34 2021
 Response via : Initial Calibration
 Integrator: ChemStation 6890 Scale Mode: Small noise peaks clipped

Volume Inj. : 2 µl
 Signal #1 Phase : ZB-MR2 Signal #2 Phase: ZB-MR2
 Signal #1 Info : 30Mx0.32mmx 0.50µ Signal #2 Info : 30M x 0.32mm x 0.25µm

Compound	RT#1	RT#2	Resp#1	Resp#2	ng/ml	ng/ml

System Monitoring Compounds						
1) SA Tetrachlo...	4.856	4.268	1039069	504348	12.009	12.414
2) SA Decachlor...	10.784	9.594	1027161	342998	12.162	12.853
Target Compounds						
16) L4 AR-1242-1	6.169	5.525	59939	24022	29.540	27.205
17) L4 AR-1242-2	6.193	5.545	86692	34157	28.552	27.233
18) L4 AR-1242-3	6.258	5.737	57197	19181	29.936	27.163
19) L4 AR-1242-4	6.364	5.834	46718	15762	30.037	23.021
20) L4 AR-1242-5	7.143	6.396	51260	22046	31.933	27.578

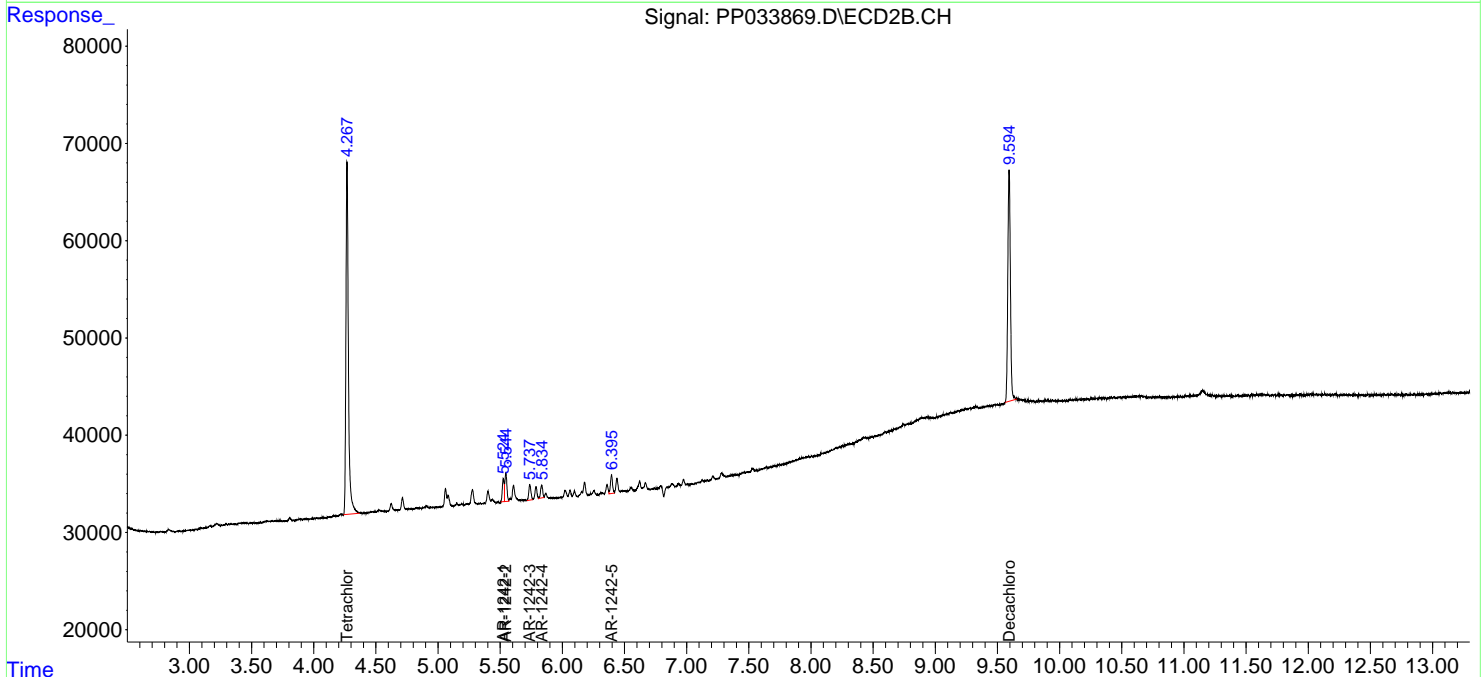
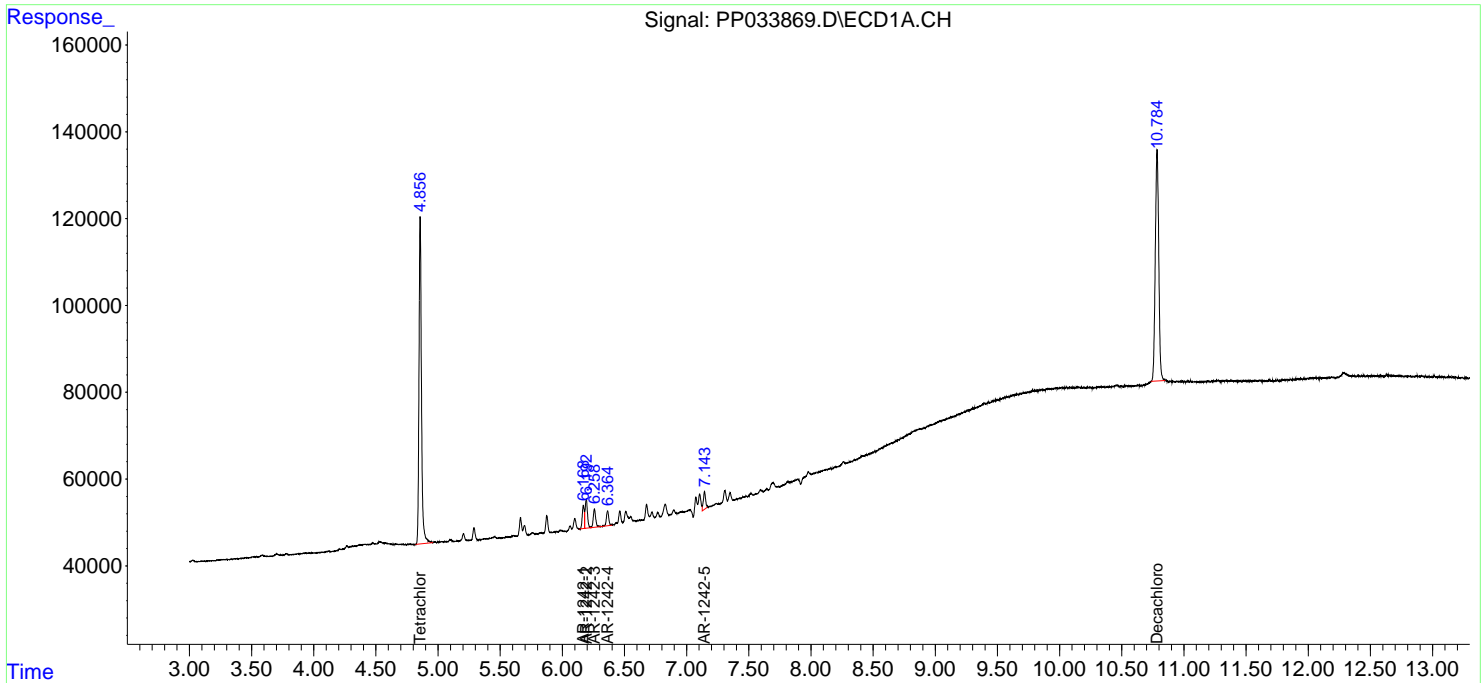
(f)=RT Delta > 1/2 Window (#)=Amounts differ by > 25% (m)=manual int.

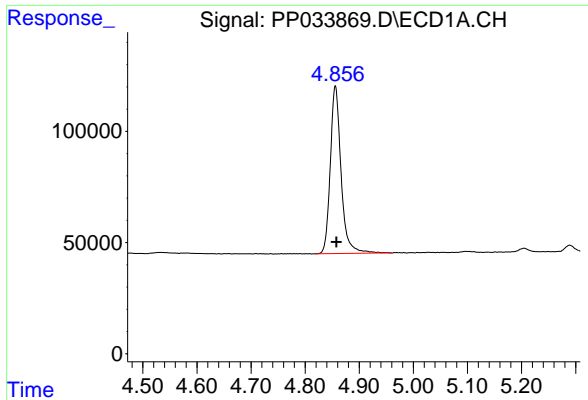
Data Path : Z:\pestpcbsrv\HPCHEM1\ECD_P\Data\PP031021\
 Data File : PP033869.D
 Signal(s) : Signal #1: ECD1A.CH Signal #2: ECD2B.CH
 Acq On : 11 Mar 2021 7:11
 Operator : DD\AJ
 Sample : M1458-09
 Misc : AR1242 MDL 25 PPB
 ALS Vial : 43 Sample Multiplier: 1

Instrument :
 ECD_P
ClientSampleId :
 MDL-WATER-03-QT1-2021

Integration File signal 1: autoint1.e
 Integration File signal 2: autoint2.e
 Quant Time: Mar 11 07:32:45 2021
 Quant Method : Z:\pestpcbsrv\HPCHEM1\ECD_P\methods\PP030921.M
 Quant Title : GC EXTRACTABLES
 QLast Update : Wed Mar 10 03:01:34 2021
 Response via : Initial Calibration
 Integrator: ChemStation 6890 Scale Mode: Small noise peaks clipped

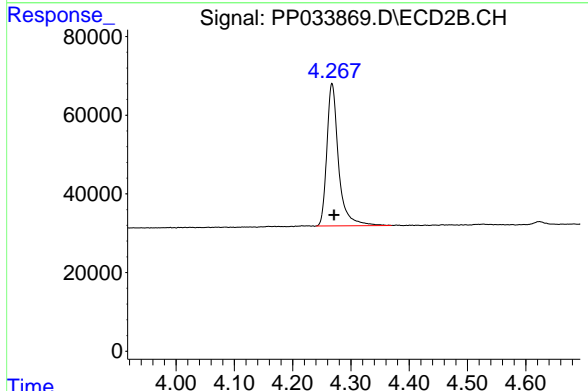
Volume Inj. : 2 µl
 Signal #1 Phase : ZB-MR1 Signal #2 Phase: ZB-MR2
 Signal #1 Info : 30Mx0.32mmx 0.50µ Signal #2 Info : 30M x 0.32mm x 0.25µm



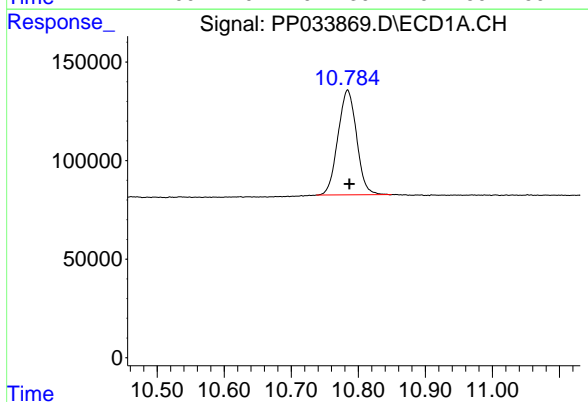


#1 Tetrachloro-m-xylene
 R.T.: 4.856 min
 Delta R.T.: -0.002 min
 Response: 1039069
 Conc: 12.01 ng/ml

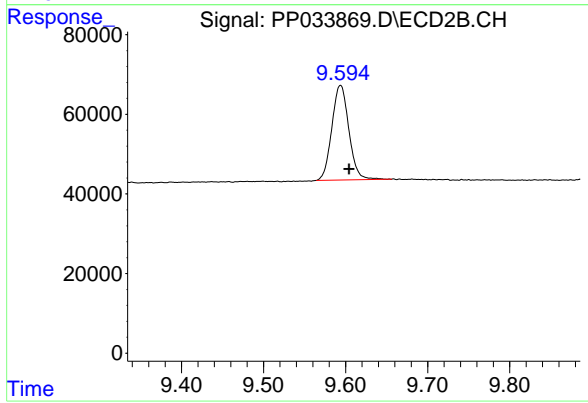
Instrument :
 ECD_P
ClientSampleId :
 MDL-WATER-03-QT1-2021



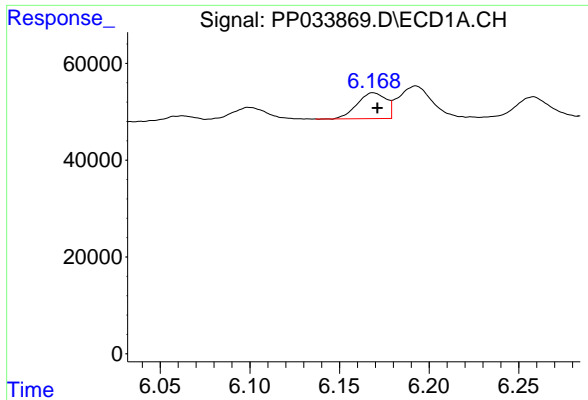
#1 Tetrachloro-m-xylene
 R.T.: 4.268 min
 Delta R.T.: -0.003 min
 Response: 504348
 Conc: 12.41 ng/ml



#2 Decachlorobiphenyl
 R.T.: 10.784 min
 Delta R.T.: -0.003 min
 Response: 1027161
 Conc: 12.16 ng/ml



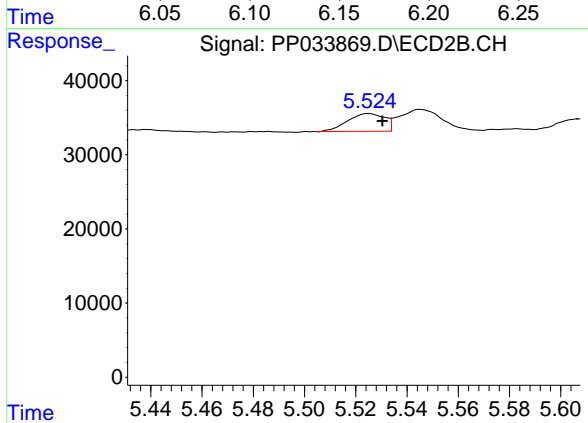
#2 Decachlorobiphenyl
 R.T.: 9.594 min
 Delta R.T.: -0.010 min
 Response: 342998
 Conc: 12.85 ng/ml



#16 AR-1242-1

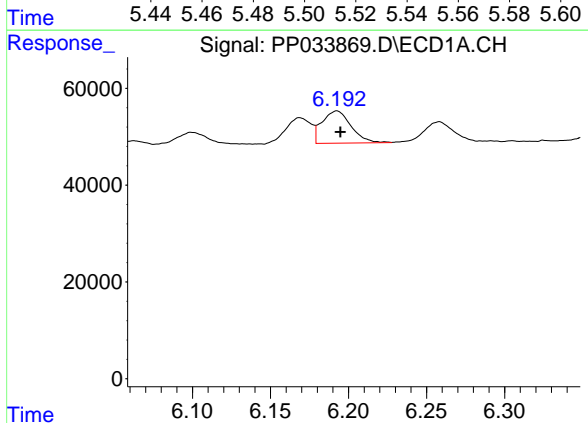
R.T.: 6.169 min
 Delta R.T.: -0.002 min
 Response: 59939
 Conc: 29.54 ng/ml

Instrument :
 ECD_P
 ClientSampleId :
 MDL-WATER-03-QT1-2021



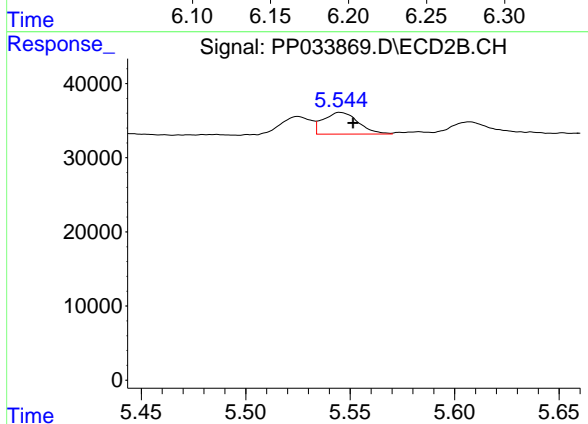
#16 AR-1242-1

R.T.: 5.525 min
 Delta R.T.: -0.005 min
 Response: 24022
 Conc: 27.20 ng/ml



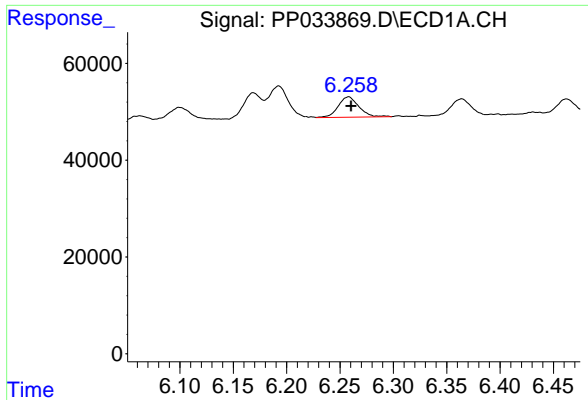
#17 AR-1242-2

R.T.: 6.193 min
 Delta R.T.: -0.002 min
 Response: 86692
 Conc: 28.55 ng/ml



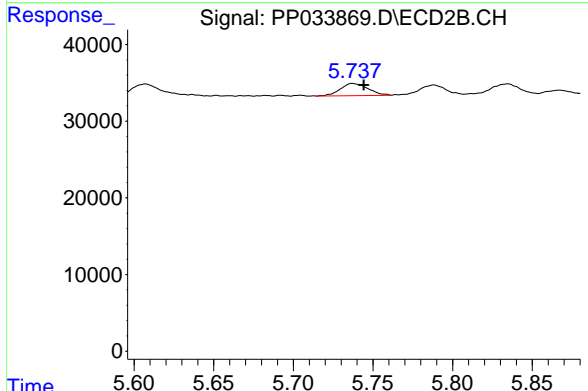
#17 AR-1242-2

R.T.: 5.545 min
 Delta R.T.: -0.006 min
 Response: 34157
 Conc: 27.23 ng/ml

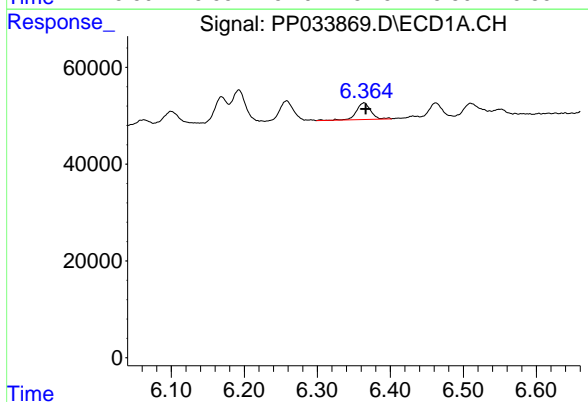


#18 AR-1242-3
 R.T.: 6.258 min
 Delta R.T.: -0.002 min
 Response: 57197
 Conc: 29.94 ng/ml

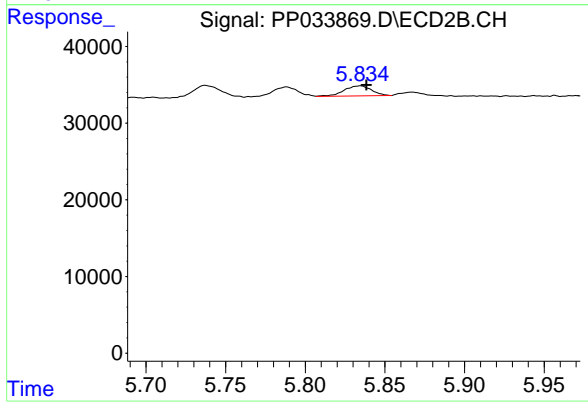
Instrument :
 ECD_P
ClientSampleId :
 MDL-WATER-03-QT1-2021



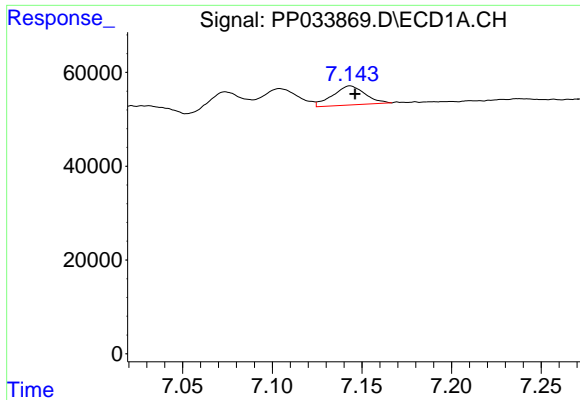
#18 AR-1242-3
 R.T.: 5.737 min
 Delta R.T.: -0.007 min
 Response: 19181
 Conc: 27.16 ng/ml



#19 AR-1242-4
 R.T.: 6.364 min
 Delta R.T.: -0.002 min
 Response: 46718
 Conc: 30.04 ng/ml



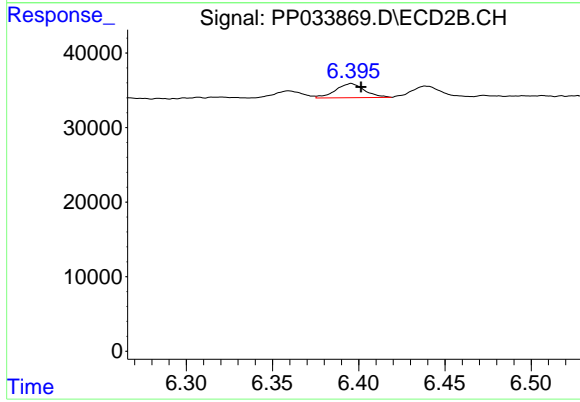
#19 AR-1242-4
 R.T.: 5.834 min
 Delta R.T.: -0.004 min
 Response: 15762
 Conc: 23.02 ng/ml



#20 AR-1242-5

R.T.: 7.143 min
 Delta R.T.: -0.003 min
 Response: 51260
 Conc: 31.93 ng/ml

Instrument :
 ECD_P
 ClientSampleId :
 MDL-WATER-03-QT1-2021



#20 AR-1242-5

R.T.: 6.396 min
 Delta R.T.: -0.006 min
 Response: 22046
 Conc: 27.58 ng/ml