

Data Path : Z:\pestpcbsrv\HPCHEM1\ECD_P\Data\PP031022\
 Data File : PP044538.D
 Signal(s) : Signal #1: ECD1A.ch Signal #2: ECD2B.ch
 Acq On : 11 Mar 2022 07:27
 Operator : YP\AJ
 Sample : N1866-02 10X
 Misc :
 ALS Vial : 70 Sample Multiplier: 1

Instrument :
 ECD_P
ClientSampleId :
 BC245039-1-2

Integration File signal 1: autoint1.e
 Integration File signal 2: autoint2.e
 Quant Time: Mar 11 09:01:34 2022
 Quant Method : Z:\pestpcbsrv\HPCHEM1\ECD_P\methods\PP030222.M
 Quant Title : GC EXTRACTABLES
 QLast Update : Thu Mar 03 02:21:53 2022
 Response via : Initial Calibration
 Integrator: ChemStation

Volume Inj. : 2 µl
 Signal #1 Phase : ZB-MR1 Signal #2 Phase: ZB-MR2
 Signal #1 Info : 30Mx0.32mmx 0.50µ Signal #2 Info : 30M x 0.32mm x 0.25µm

Compound	RT#1	RT#2	Resp#1	Resp#2	ng/ml	ng/ml

System Monitoring Compounds						
1) SA Tetrachlo...	3.910	3.165	2967510	3349954	1.432	1.915 #
2) SA Decachlor...	10.047	8.528	2763164	3232742	2.008	2.107

Target Compounds

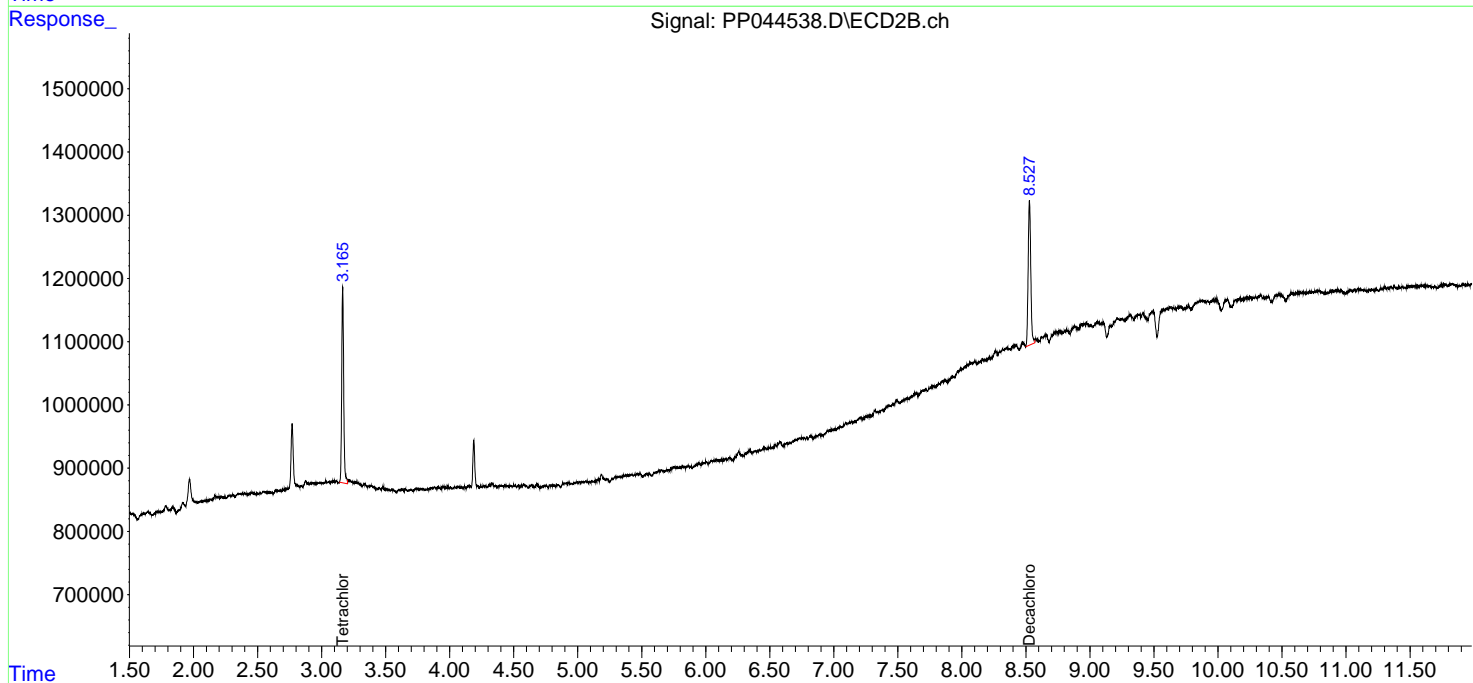
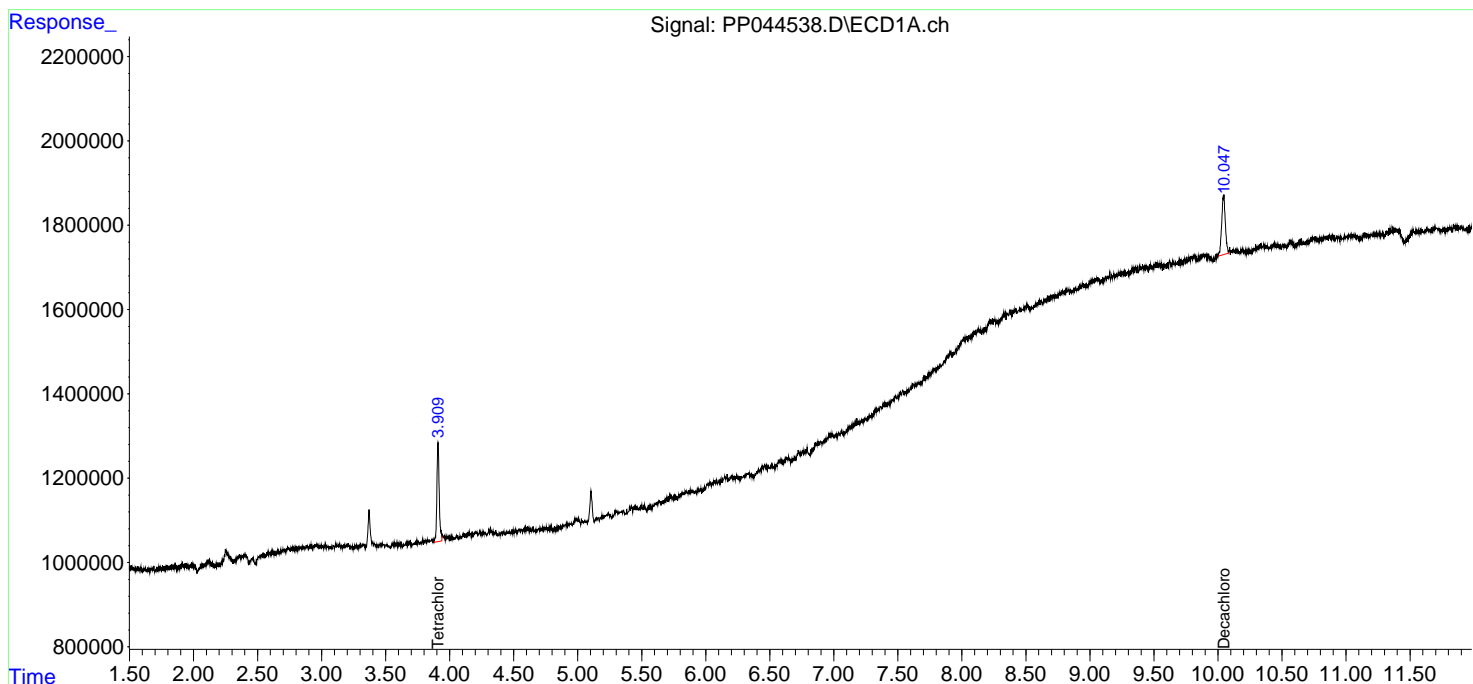
(f)=RT Delta > 1/2 Window (#)=Amounts differ by > 25% (m)=manual int.

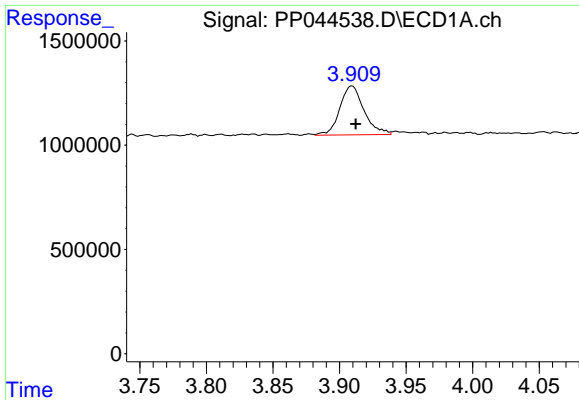
Data Path : Z:\pestpcbsrv\HPCHEM1\ECD_P\Data\PP031022\
 Data File : PP044538.D
 Signal(s) : Signal #1: ECD1A.ch Signal #2: ECD2B.ch
 Acq On : 11 Mar 2022 07:27
 Operator : YP\AJ
 Sample : N1866-02 10X
 Misc :
 ALS Vial : 70 Sample Multiplier: 1

Instrument :
 ECD_P
ClientSampleId :
 BC245039-1-2

Integration File signal 1: autoint1.e
 Integration File signal 2: autoint2.e
 Quant Time: Mar 11 09:01:34 2022
 Quant Method : Z:\pestpcbsrv\HPCHEM1\ECD_P\methods\PP030222.M
 Quant Title : GC EXTRACTABLES
 QLast Update : Thu Mar 03 02:21:53 2022
 Response via : Initial Calibration
 Integrator: ChemStation

Volume Inj. : 2 µl
 Signal #1 Phase : ZB-MR1 Signal #2 Phase: ZB-MR2
 Signal #1 Info : 30Mx0.32mmx 0.50µ Signal #2 Info : 30M x 0.32mm x 0.25µm

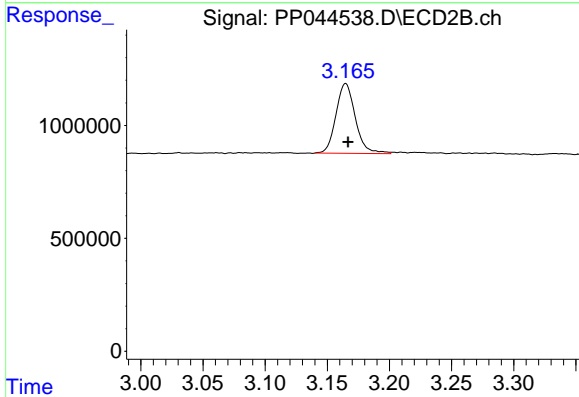




#1 Tetrachloro-m-xylene

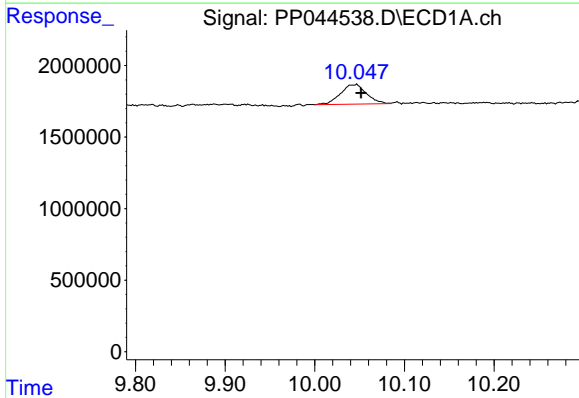
R.T.: 3.910 min
 Delta R.T.: -0.002 min
 Response: 2967510
 Conc: 1.43 ng/ml

Instrument :
 ECD_P
 ClientSampleId :
 BC245039-1-2



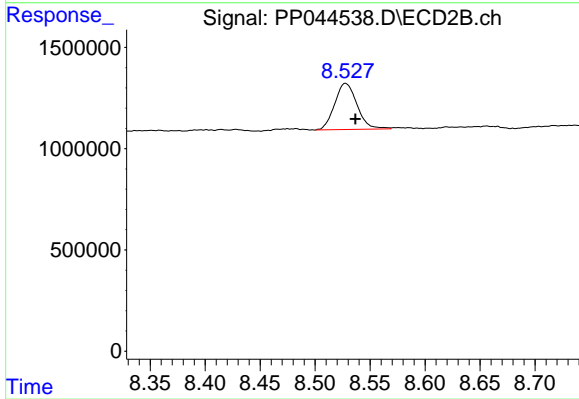
#1 Tetrachloro-m-xylene

R.T.: 3.165 min
 Delta R.T.: -0.002 min
 Response: 3349954
 Conc: 1.91 ng/ml



#2 Decachlorobiphenyl

R.T.: 10.047 min
 Delta R.T.: -0.005 min
 Response: 2763164
 Conc: 2.01 ng/ml



#2 Decachlorobiphenyl

R.T.: 8.528 min
 Delta R.T.: -0.009 min
 Response: 3232742
 Conc: 2.11 ng/ml