

Data Path : Z:\pestpcbsrv\HPCHEM1\ECD\_P\Data\PP031121\  
 Data File : PP033902.D  
 Signal(s) : Signal #1: ECD1A.CH Signal #2: ECD2B.CH  
 Acq On : 11 Mar 2021 18:30  
 Operator : DD\AJ  
 Sample : M1624-05  
 Misc :  
 ALS Vial : 24 Sample Multiplier: 1

Instrument :  
 ECD\_P  
 ClientSampleId :  
 WALLS-3

Manual Integrations  
 APPROVED

Ankita  
 3/12/2021 11:38:33 AM

Integration File signal 1: autoint1.e  
 Integration File signal 2: autoint2.e  
 Quant Time: Mar 12 00:48:51 2021  
 Quant Method : Z:\pestpcbsrv\HPCHEM1\ECD\_P\methods\PP030921.M  
 Quant Title : GC EXTRACTABLES  
 QLast Update : Wed Mar 10 03:01:34 2021  
 Response via : Initial Calibration  
 Integrator: ChemStation 6890 Scale Mode: Small noise peaks clipped

Volume Inj. : 2 µl  
 Signal #1 Phase : ZB-MR1 Signal #2 Phase: ZB-MR2  
 Signal #1 Info : 30Mx0.32mmx 0.50µ Signal #2 Info : 30M x 0.32mm x 0.25µm

	Compound	RT#1	RT#2	Resp#1	Resp#2	ng/ml	ng/ml
-----							
System Monitoring Compounds							
1)	SA Tetrachlo...	4.857	4.269	1268380	661872	14.659	16.292
2)	SA Decachlor...	10.788	9.595	2651022	897864	31.390	33.646
Target Compounds							
3)	L1 AR-1016-1	6.170	5.526	64956	28798	24.382	25.302
4)	L1 AR-1016-2	6.194	5.548	99401	56159	24.593	33.973 #
5)	L1 AR-1016-3	6.259	5.740	56656	26966	22.895	29.429 #
6)	L1 AR-1016-4	6.366	5.788	43141	37479	21.163	51.901 #
7)	L1 AR-1016-5	6.678	6.019	77202	30913	38.087	33.434
26)	L6 AR-1254-1	7.076	6.397	182350	133313	63.953	81.034 #
27)	L6 AR-1254-2	7.306	6.554	320844	96458	73.090	67.322
28)	L6 AR-1254-3	7.686	6.975	407458	252661	85.869	109.452 #
29)	L6 AR-1254-4	7.981	7.211	302110	117377	89.524	90.749
30)	L6 AR-1254-5	8.409	7.639	666465	310739	177.896	159.994
31)	L7 AR-1260-1	7.850	7.110	212264	142235	61.811	93.069 #
32)	L7 AR-1260-2	8.116	7.306	352747	171947	85.676m	95.064
33)	L7 AR-1260-3	8.482	7.461	233366	112673	72.098	66.529
34)	L7 AR-1260-4	8.709	7.941	197220	108099	53.243m	73.502 #
35)	L7 AR-1260-5	9.030	8.182	287201	317217	37.124	97.566 #
-----							

(f)=RT Delta > 1/2 Window (#)=Amounts differ by > 25% (m)=manual int.

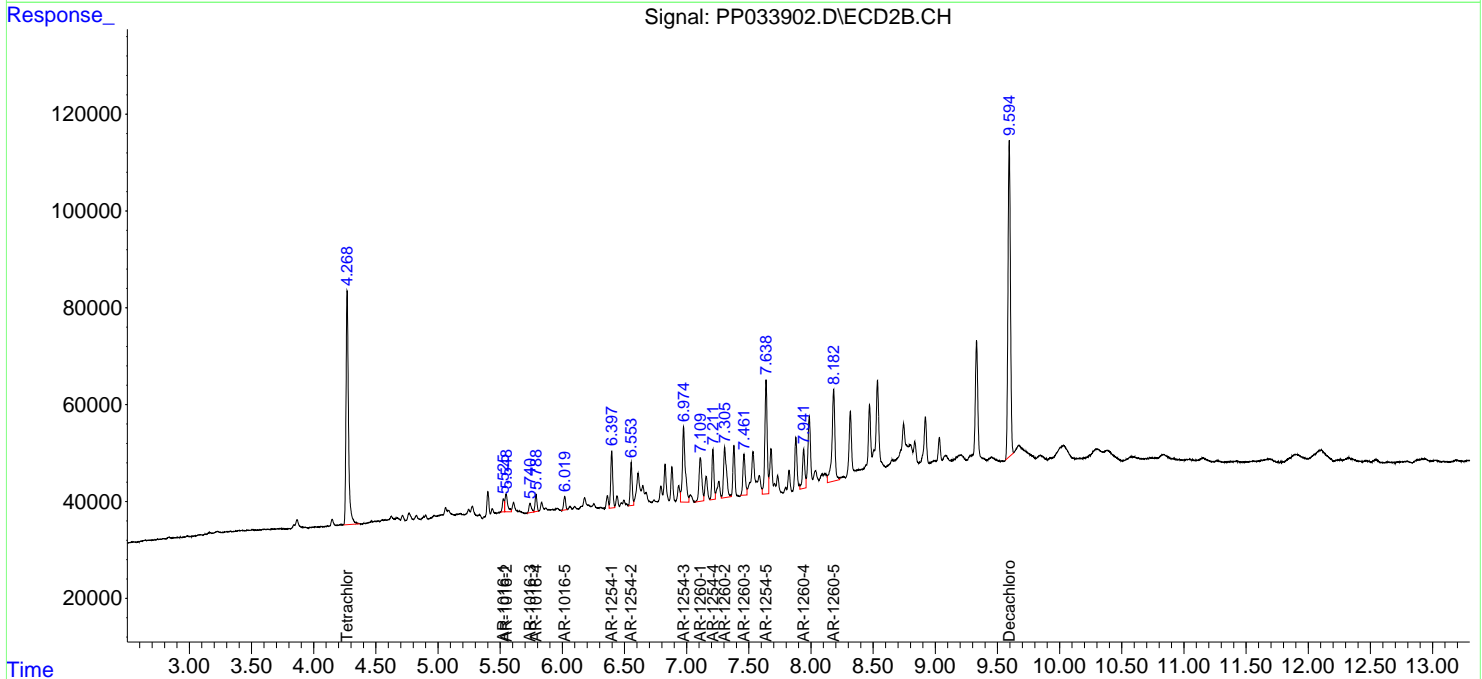
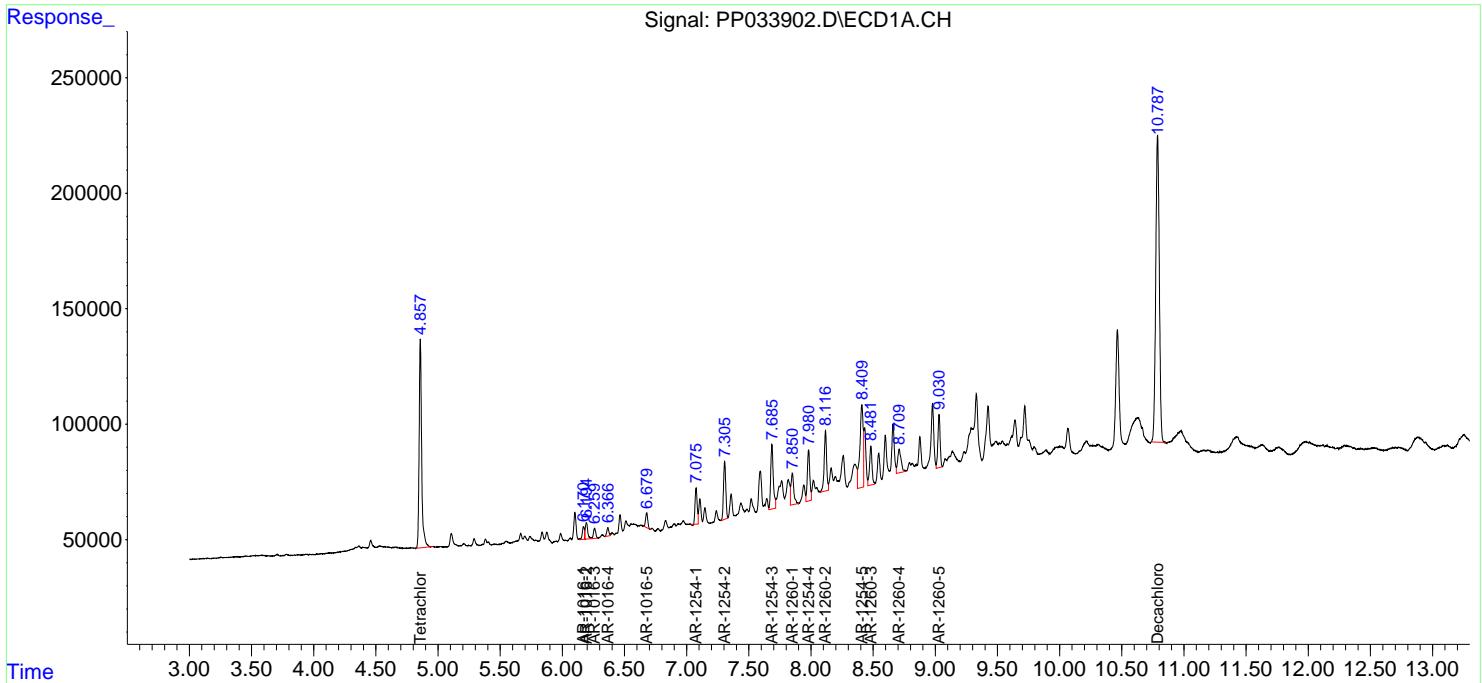
Data Path : Z:\pestpcbsrv\HPCHEM1\ECD\_P\Data\PP031121\  
 Data File : PP033902.D  
 Signal(s) : Signal #1: ECD1A.CH Signal #2: ECD2B.CH  
 Acq On : 11 Mar 2021 18:30  
 Operator : DD\AJ  
 Sample : M1624-05  
 Misc :  
 ALS Vial : 24 Sample Multiplier: 1

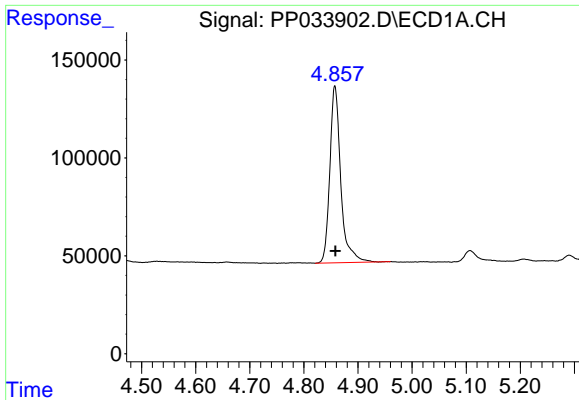
**Instrument :**  
 ECD\_P  
**Client Sampled :**  
 WALLS-3

**Manual Integrations**  
**APPROVED**  
 Ankita  
 3/12/2021 11:38:33 AM

Integration File signal 1: autoint1.e  
 Integration File signal 2: autoint2.e  
 Quant Time: Mar 12 00:48:51 2021  
 Quant Method : Z:\pestpcbsrv\HPCHEM1\ECD\_P\methods\PP030921.M  
 Quant Title : GC EXTRACTABLES  
 QLast Update : Wed Mar 10 03:01:34 2021  
 Response via : Initial Calibration  
 Integrator: ChemStation 6890 Scale Mode: Small noise peaks clipped

Volume Inj. : 2 µl  
 Signal #1 Phase : ZB-MR1 Signal #2 Phase: ZB-MR2  
 Signal #1 Info : 30Mx0.32mmx 0.50µ Signal #2 Info : 30M x 0.32mm x 0.25µm

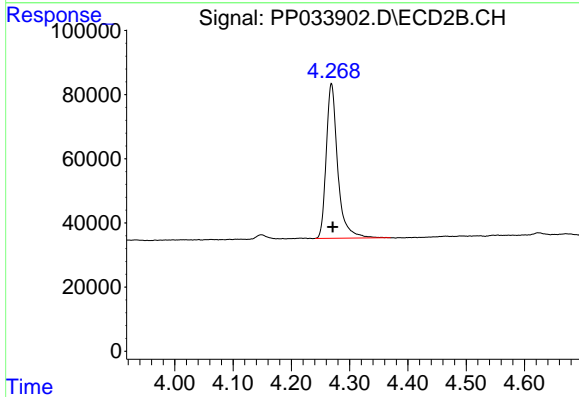




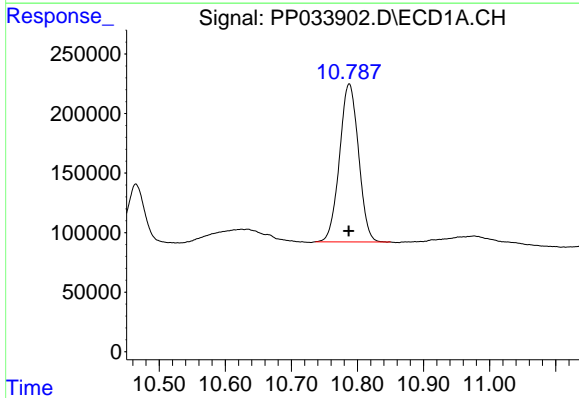
#1 Tetrachloro-m-xylene  
 R.T.: 4.857 min  
 Delta R.T.: 0.000 min  
 Response: 1268380  
 Conc: 14.66 ng/ml

Instrument :  
 ECD\_P  
 ClientSampled :  
 WALLS-3

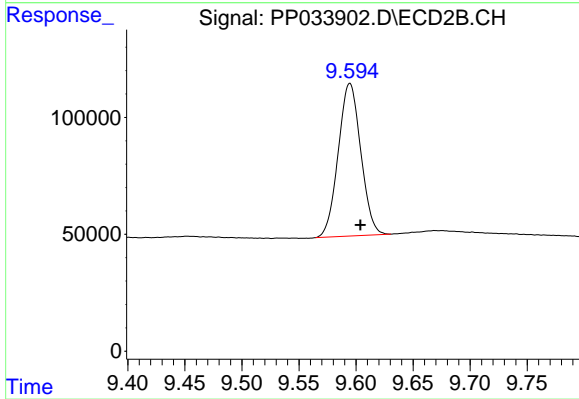
Manual Integrations  
 APPROVED  
 Ankita  
 3/12/2021 11:38:33 AM



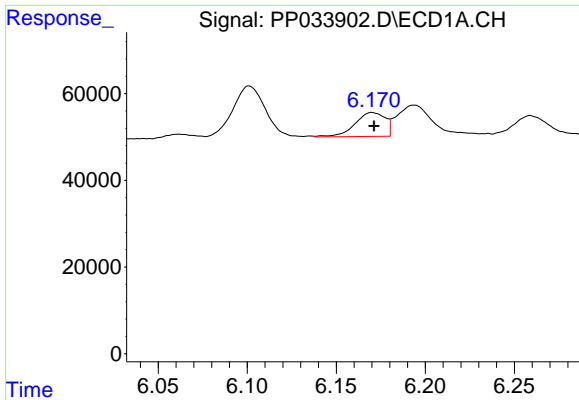
#1 Tetrachloro-m-xylene  
 R.T.: 4.269 min  
 Delta R.T.: -0.002 min  
 Response: 661872  
 Conc: 16.29 ng/ml



#2 Decachlorobiphenyl  
 R.T.: 10.788 min  
 Delta R.T.: 0.000 min  
 Response: 2651022  
 Conc: 31.39 ng/ml



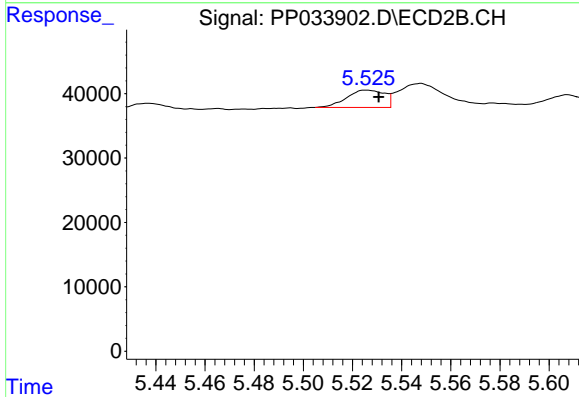
#2 Decachlorobiphenyl  
 R.T.: 9.595 min  
 Delta R.T.: -0.009 min  
 Response: 897864  
 Conc: 33.65 ng/ml



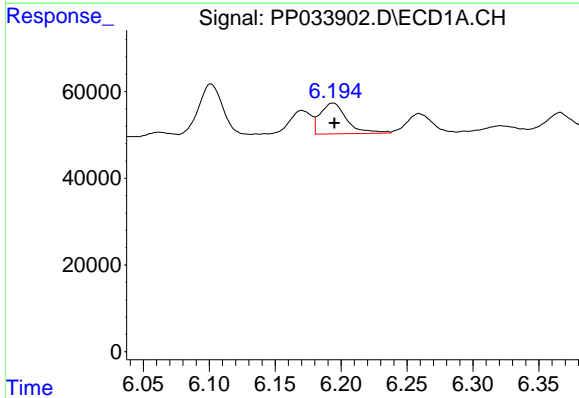
#3 AR-1016-1  
 R.T.: 6.170 min  
 Delta R.T.: -0.001 min  
 Response: 64956  
 Conc: 24.38 ng/ml

Instrument :  
 ECD\_P  
 ClientSampled :  
 WALLS-3

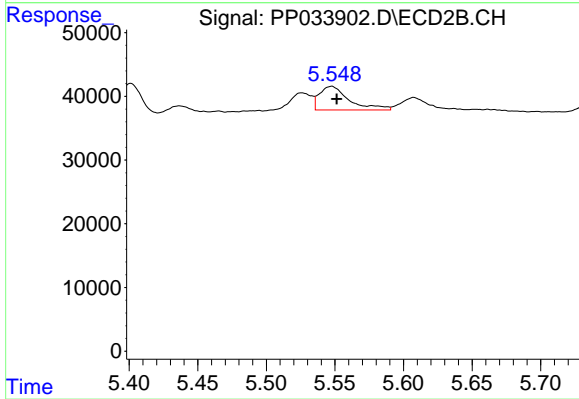
Manual Integrations  
 APPROVED  
 Ankita  
 3/12/2021 11:38:33 AM



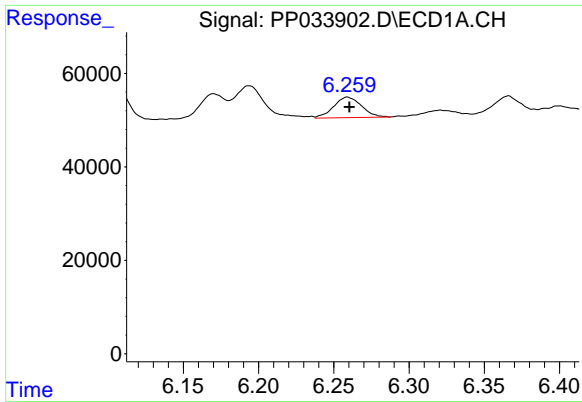
#3 AR-1016-1  
 R.T.: 5.526 min  
 Delta R.T.: -0.005 min  
 Response: 28798  
 Conc: 25.30 ng/ml



#4 AR-1016-2  
 R.T.: 6.194 min  
 Delta R.T.: -0.001 min  
 Response: 99401  
 Conc: 24.59 ng/ml



#4 AR-1016-2  
 R.T.: 5.548 min  
 Delta R.T.: -0.004 min  
 Response: 56159  
 Conc: 33.97 ng/ml

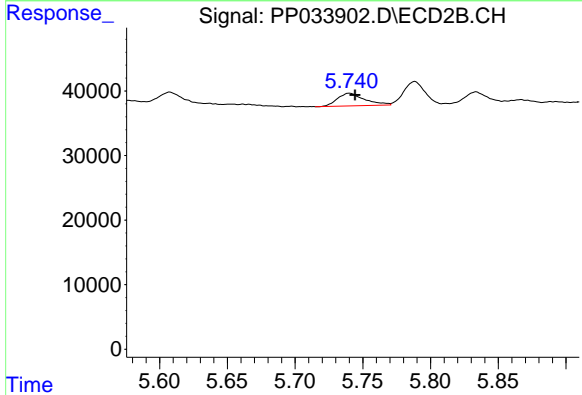


#5 AR-1016-3

R.T.: 6.259 min  
 Delta R.T.: -0.001 min  
 Response: 56656  
 Conc: 22.90 ng/ml

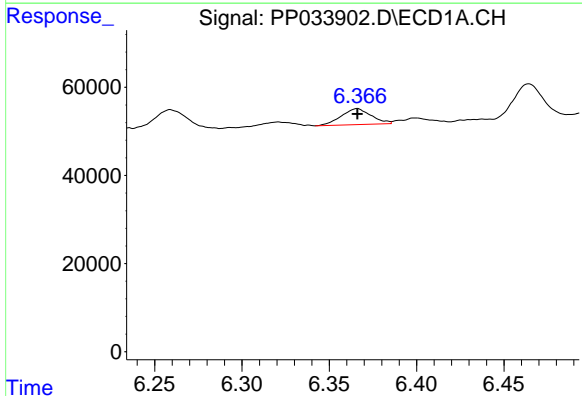
Instrument :  
 ECD\_P  
 ClientSampled :  
 WALLS-3

Manual Integrations  
 APPROVED  
 Ankita  
 3/12/2021 11:38:33 AM



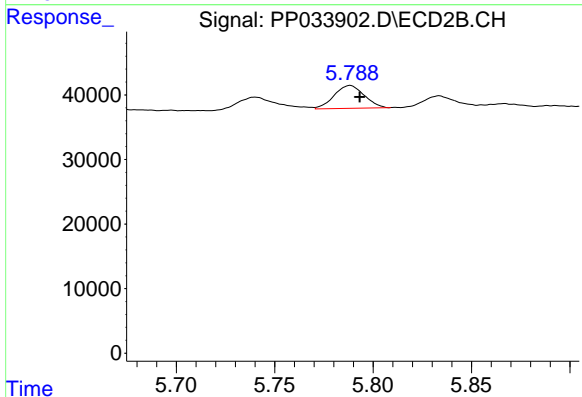
#5 AR-1016-3

R.T.: 5.740 min  
 Delta R.T.: -0.004 min  
 Response: 26966  
 Conc: 29.43 ng/ml



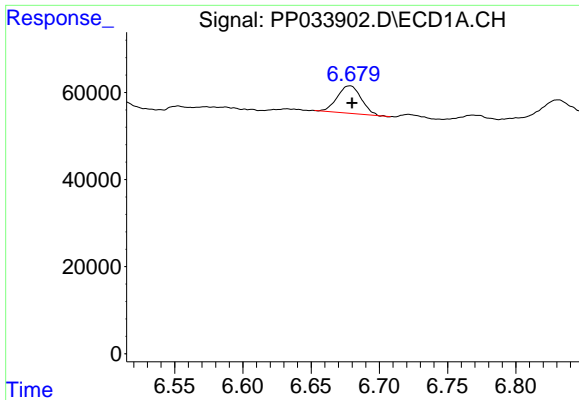
#6 AR-1016-4

R.T.: 6.366 min  
 Delta R.T.: 0.000 min  
 Response: 43141  
 Conc: 21.16 ng/ml



#6 AR-1016-4

R.T.: 5.788 min  
 Delta R.T.: -0.005 min  
 Response: 37479  
 Conc: 51.90 ng/ml

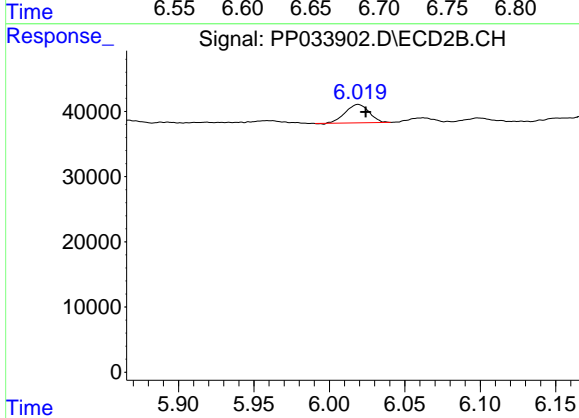


#7 AR-1016-5

R.T.: 6.678 min  
 Delta R.T.: -0.002 min  
 Response: 77202  
 Conc: 38.09 ng/ml

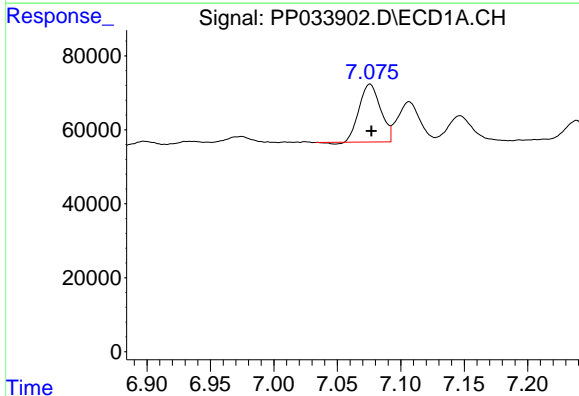
**Instrument :**  
 ECD\_P  
**ClientSampled :**  
 WALLS-3

**Manual Integrations**  
**APPROVED**  
 Ankita  
 3/12/2021 11:38:33 AM



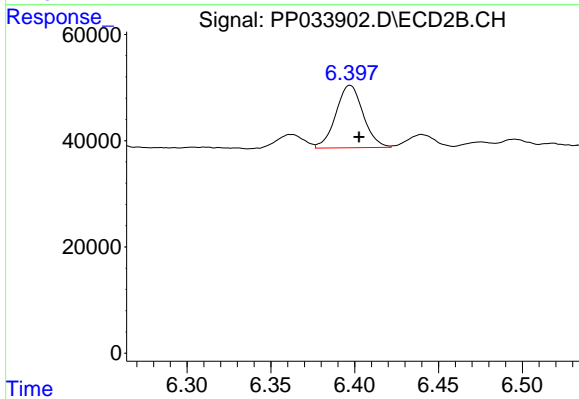
#7 AR-1016-5

R.T.: 6.019 min  
 Delta R.T.: -0.005 min  
 Response: 30913  
 Conc: 33.43 ng/ml



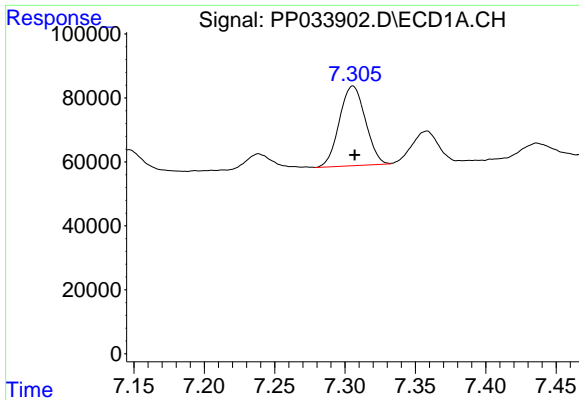
#26 AR-1254-1

R.T.: 7.076 min  
 Delta R.T.: -0.001 min  
 Response: 182350  
 Conc: 63.95 ng/ml



#26 AR-1254-1

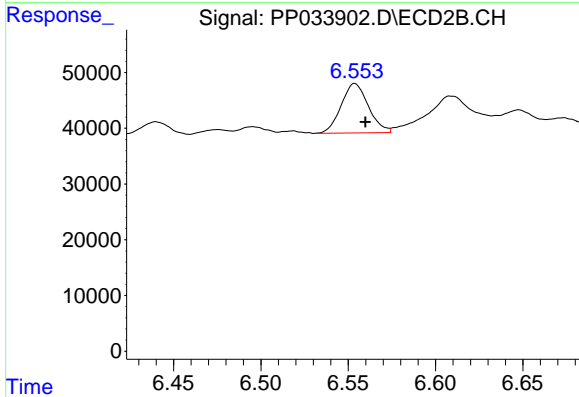
R.T.: 6.397 min  
 Delta R.T.: -0.005 min  
 Response: 133313  
 Conc: 81.03 ng/ml



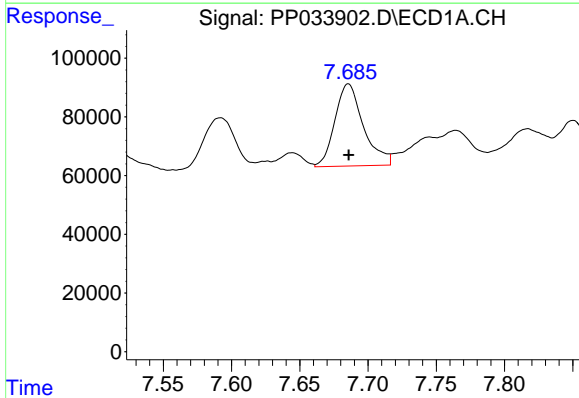
#27 AR-1254-2  
 R.T.: 7.306 min  
 Delta R.T.: -0.001 min  
 Response: 320844  
 Conc: 73.09 ng/ml

**Instrument :**  
 ECD\_P  
**ClientSampled :**  
 WALLS-3

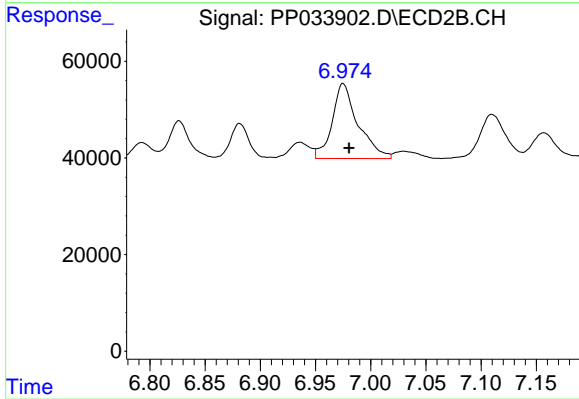
**Manual Integrations**  
**APPROVED**  
 Ankita  
 3/12/2021 11:38:33 AM



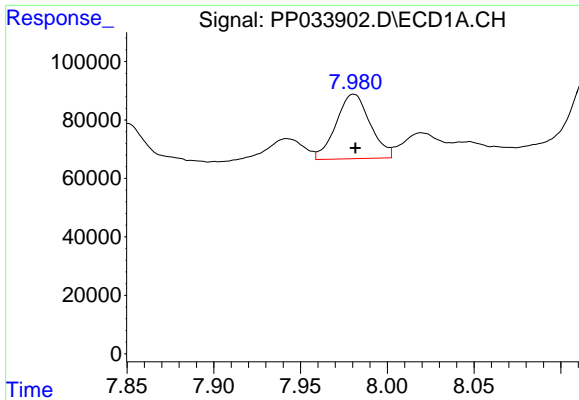
#27 AR-1254-2  
 R.T.: 6.554 min  
 Delta R.T.: -0.006 min  
 Response: 96458  
 Conc: 67.32 ng/ml



#28 AR-1254-3  
 R.T.: 7.686 min  
 Delta R.T.: 0.000 min  
 Response: 407458  
 Conc: 85.87 ng/ml



#28 AR-1254-3  
 R.T.: 6.975 min  
 Delta R.T.: -0.006 min  
 Response: 252661  
 Conc: 109.45 ng/ml

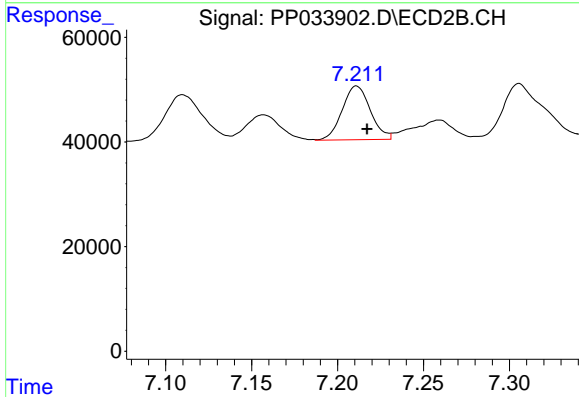


#29 AR-1254-4

R.T.: 7.981 min  
 Delta R.T.: 0.000 min  
 Response: 302110  
 Conc: 89.52 ng/ml

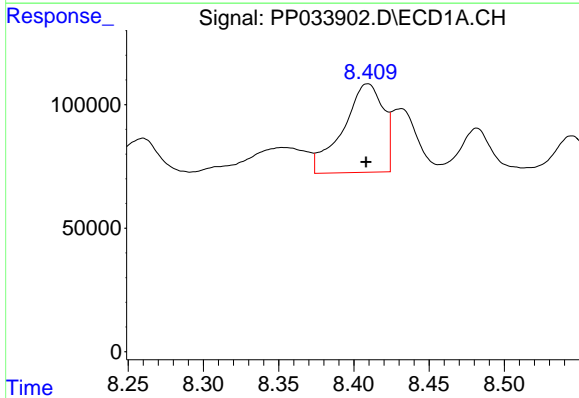
**Instrument :**  
 ECD\_P  
**ClientSampled :**  
 WALLS-3

**Manual Integrations**  
**APPROVED**  
 Ankita  
 3/12/2021 11:38:33 AM



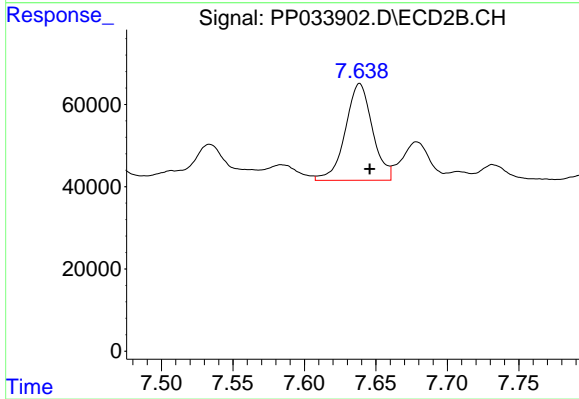
#29 AR-1254-4

R.T.: 7.211 min  
 Delta R.T.: -0.006 min  
 Response: 117377  
 Conc: 90.75 ng/ml



#30 AR-1254-5

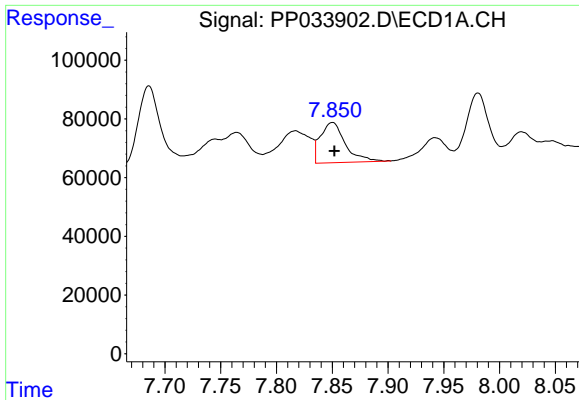
R.T.: 8.409 min  
 Delta R.T.: 0.001 min  
 Response: 666465  
 Conc: 177.90 ng/ml



#30 AR-1254-5

R.T.: 7.639 min  
 Delta R.T.: -0.007 min  
 Response: 310739  
 Conc: 159.99 ng/ml

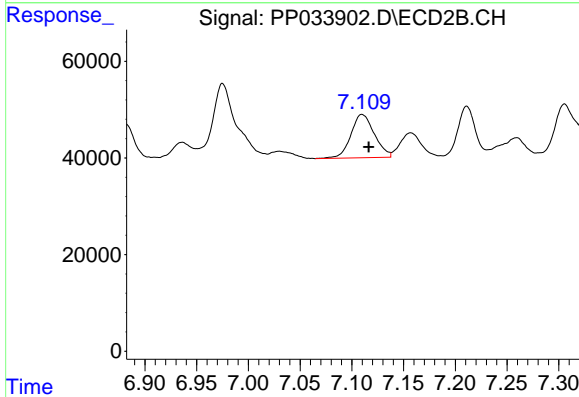




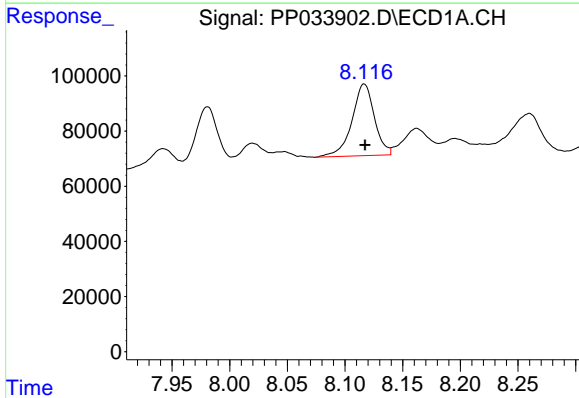
#31 AR-1260-1  
 R.T.: 7.850 min  
 Delta R.T.: -0.002 min  
 Response: 212264  
 Conc: 61.81 ng/ml

**Instrument :**  
 ECD\_P  
**ClientSampled :**  
 WALLS-3

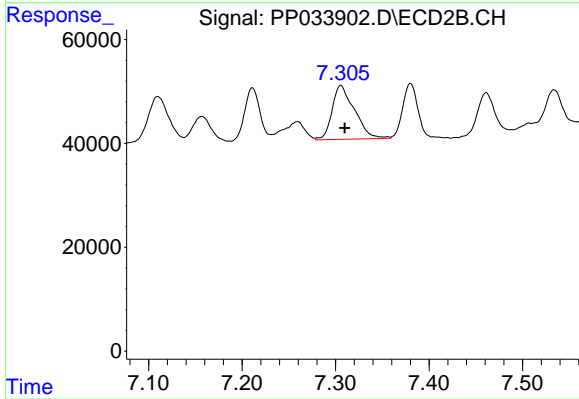
**Manual Integrations**  
**APPROVED**  
 Ankita  
 3/12/2021 11:38:33 AM



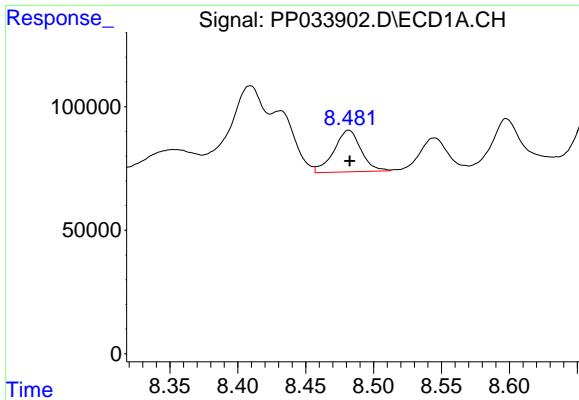
#31 AR-1260-1  
 R.T.: 7.110 min  
 Delta R.T.: -0.006 min  
 Response: 142235  
 Conc: 93.07 ng/ml



#32 AR-1260-2  
 R.T.: 8.116 min  
 Delta R.T.: -0.002 min  
 Response: 352747  
 Conc: 85.68 ng/ml m



#32 AR-1260-2  
 R.T.: 7.306 min  
 Delta R.T.: -0.004 min  
 Response: 171947  
 Conc: 95.06 ng/ml

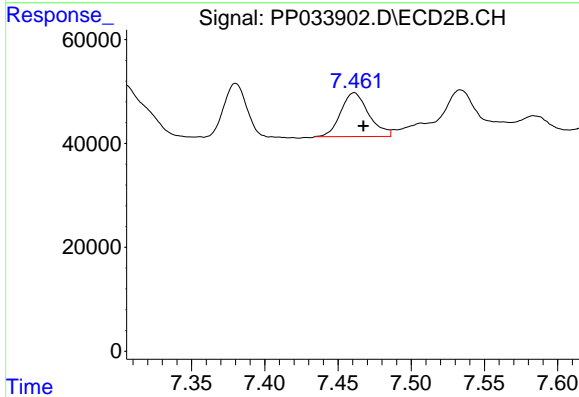


#33 AR-1260-3

R.T.: 8.482 min  
 Delta R.T.: 0.000 min  
 Response: 233366  
 Conc: 72.10 ng/ml

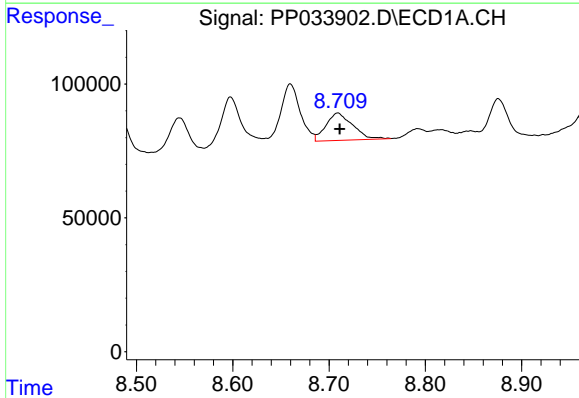
**Instrument :**  
 ECD\_P  
**ClientSampled :**  
 WALLS-3

**Manual Integrations**  
**APPROVED**  
 Ankita  
 3/12/2021 11:38:33 AM



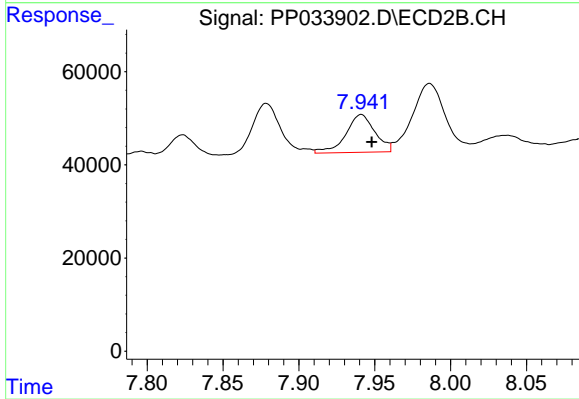
#33 AR-1260-3

R.T.: 7.461 min  
 Delta R.T.: -0.006 min  
 Response: 112673  
 Conc: 66.53 ng/ml



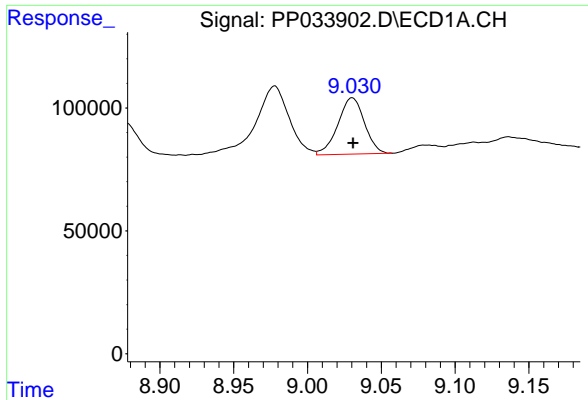
#34 AR-1260-4

R.T.: 8.709 min  
 Delta R.T.: -0.002 min  
 Response: 197220  
 Conc: 53.24 ng/ml m



#34 AR-1260-4

R.T.: 7.941 min  
 Delta R.T.: -0.007 min  
 Response: 108099  
 Conc: 73.50 ng/ml



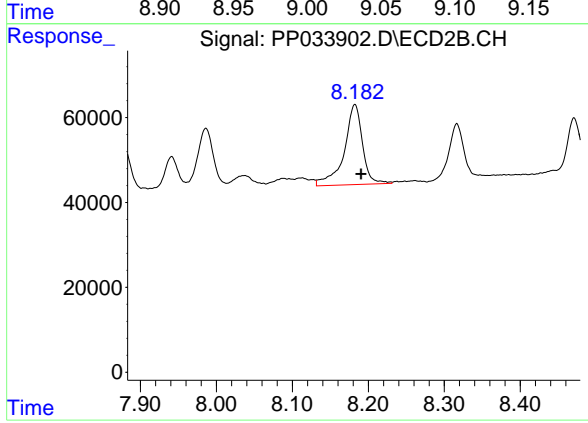
#35 AR-1260-5

R.T.: 9.030 min  
Delta R.T.: 0.000 min  
Response: 287201  
Conc: 37.12 ng/ml

Instrument :  
ECD\_P  
ClientSampled :  
WALLS-3

Manual Integrations  
APPROVED

Ankita  
3/12/2021 11:38:33 AM



#35 AR-1260-5

R.T.: 8.182 min  
Delta R.T.: -0.008 min  
Response: 317217  
Conc: 97.57 ng/ml