

Data Path : Z:\pestpcbsrv\HPCHEM1\ECD\_P\Data\PP031123\  
 Data File : PP056420.D  
 Signal(s) : Signal #1: ECD1A.ch Signal #2: ECD2B.ch  
 Acq On : 11 Mar 2023 00:52  
 Operator : YP\AJ  
 Sample : AR1242CCC500  
 Misc :  
 ALS Vial : 4 Sample Multiplier: 1

**Instrument :**  
 ECD\_P  
**ClientSampleId :**  
 AR1242CCC500

Integration File signal 1: autoint1.e  
 Integration File signal 2: autoint2.e  
 Quant Time: Mar 11 05:08:15 2023  
 Quant Method : Z:\pestpcbsrv\HPCHEM1\ECD\_P\methods\PP030823.M  
 Quant Title : GC EXTRACTABLES  
 QLast Update : Wed Mar 08 02:03:40 2023  
 Response via : Initial Calibration  
 Integrator: ChemStation

Volume Inj. : 2 µl  
 Signal #1 Phase : ZB-MR1 Signal #2 Phase: ZB-MR2  
 Signal #1 Info : 30Mx0.32mmx 0.50µ Signal #2 Info : 30M x 0.32mm x 0.25µm

Compound	RT#1	RT#2	Resp#1	Resp#2	ng/ml	ng/ml
-----						
System Monitoring Compounds						
1) SA Tetrachlo...	4.319	3.560	88665574	71915941	57.103	50.965
2) SA Decachlor...	10.065	8.559	96387591	56278701	48.525	50.345
Target Compounds						
16) L4 AR-1242-1	5.489	4.641	25336180	17494107	519.886	494.700
17) L4 AR-1242-2	5.513	4.659	36513893	24622855	511.767	484.621
18) L4 AR-1242-3	5.574	4.835	23057413	13504056	506.487	500.434
19) L4 AR-1242-4	5.673	4.919	19012775	14892584	531.939	508.289
20) L4 AR-1242-5	6.414	5.442	21110982	17938225	493.822	555.988
-----						

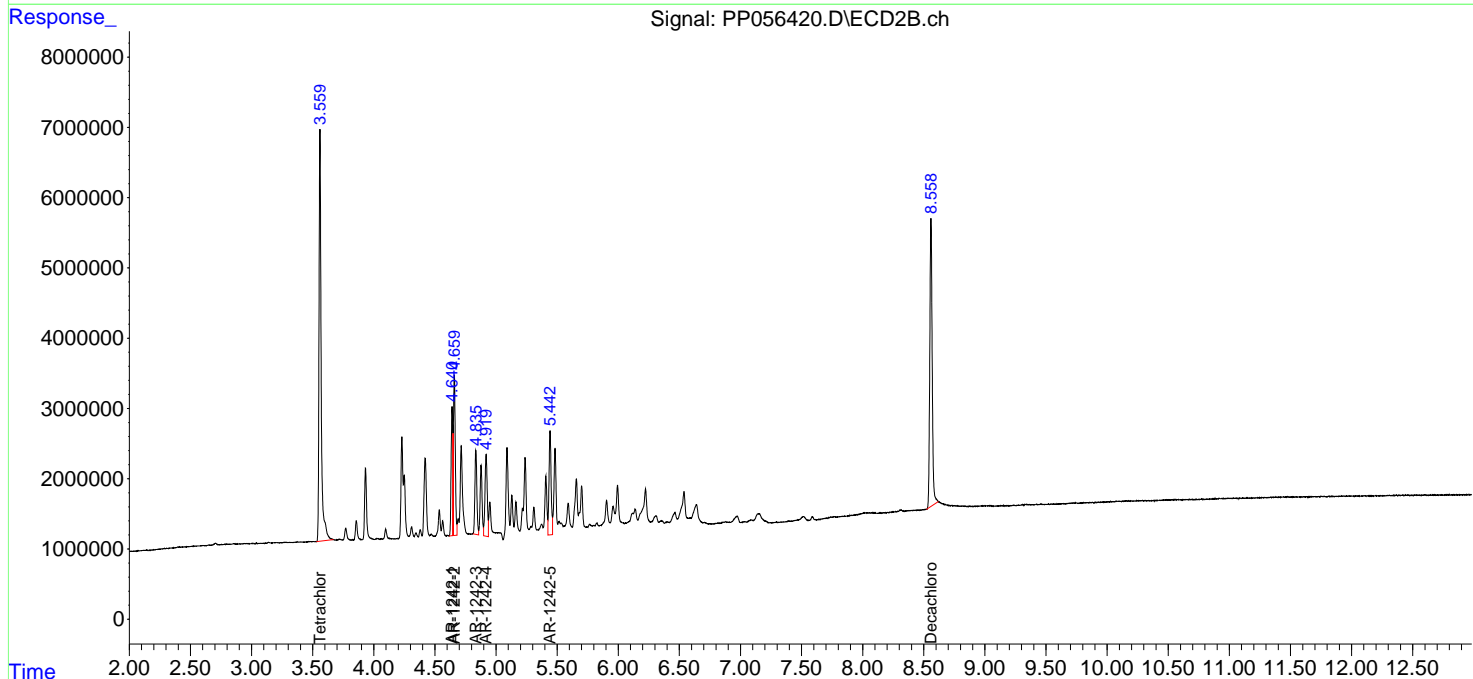
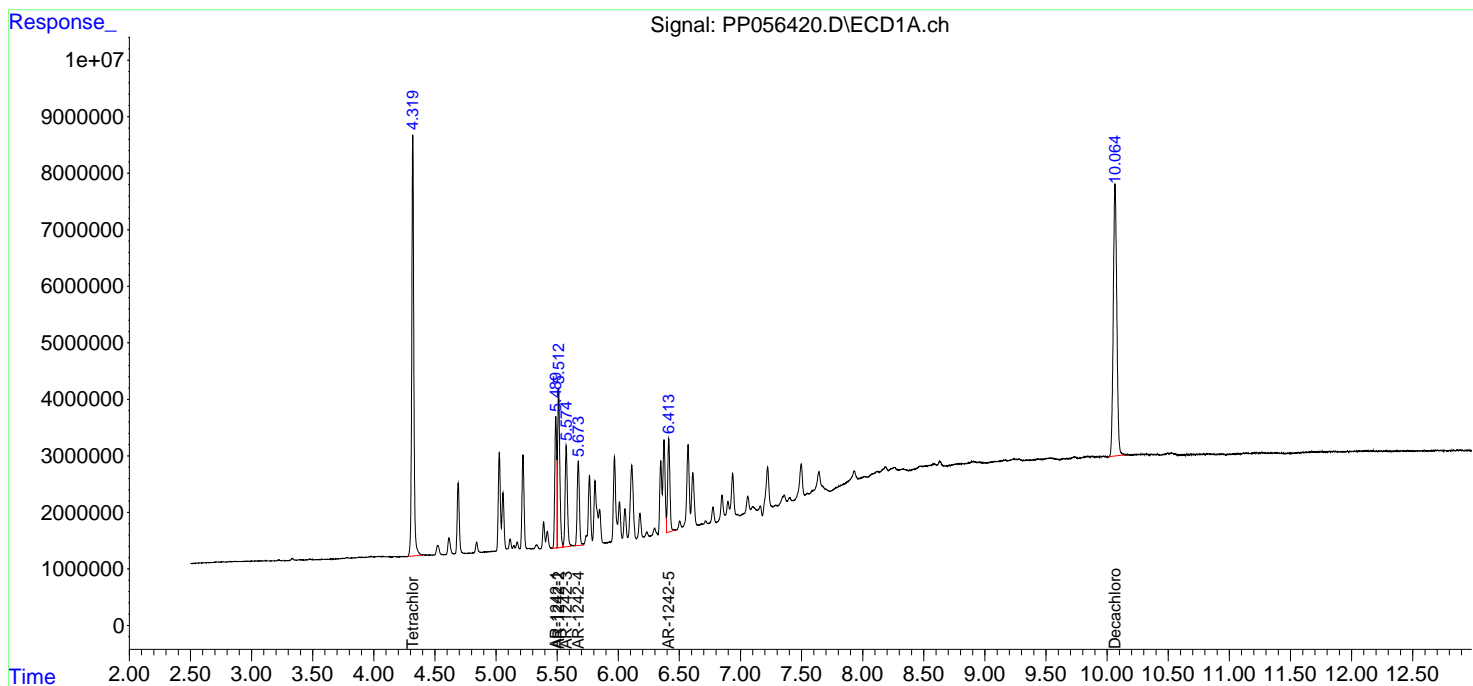
(f)=RT Delta > 1/2 Window (#)=Amounts differ by > 25% (m)=manual int.

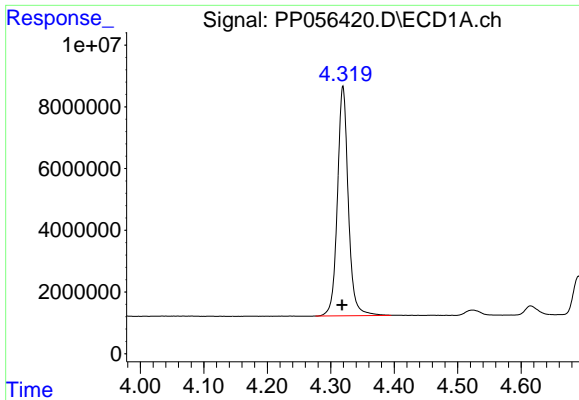
Data Path : Z:\pestpcbsrv\HPCHEM1\ECD\_P\Data\PP031123\  
 Data File : PP056420.D  
 Signal(s) : Signal #1: ECD1A.ch Signal #2: ECD2B.ch  
 Acq On : 11 Mar 2023 00:52  
 Operator : YP\AJ  
 Sample : AR1242CCC500  
 Misc :  
 ALS Vial : 4 Sample Multiplier: 1

Instrument :  
 ECD\_P  
 ClientSampleId :  
 AR1242CCC500

Integration File signal 1: autoint1.e  
 Integration File signal 2: autoint2.e  
 Quant Time: Mar 11 05:08:15 2023  
 Quant Method : Z:\pestpcbsrv\HPCHEM1\ECD\_P\methods\PP030823.M  
 Quant Title : GC EXTRACTABLES  
 QLast Update : Wed Mar 08 02:03:40 2023  
 Response via : Initial Calibration  
 Integrator: ChemStation

Volume Inj. : 2 µl  
 Signal #1 Phase : ZB-MR1 Signal #2 Phase: ZB-MR2  
 Signal #1 Info : 30Mx0.32mmx 0.50µ Signal #2 Info : 30M x 0.32mm x 0.25µm

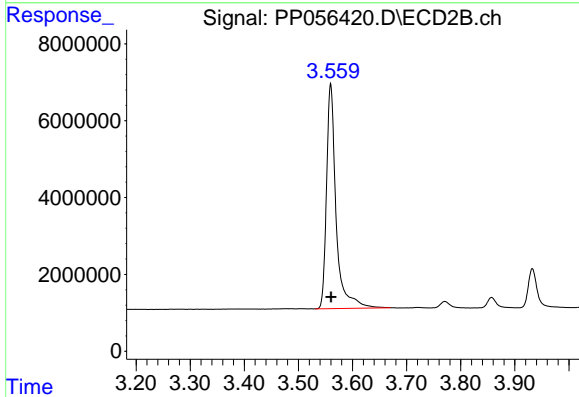




#1 Tetrachloro-m-xylene

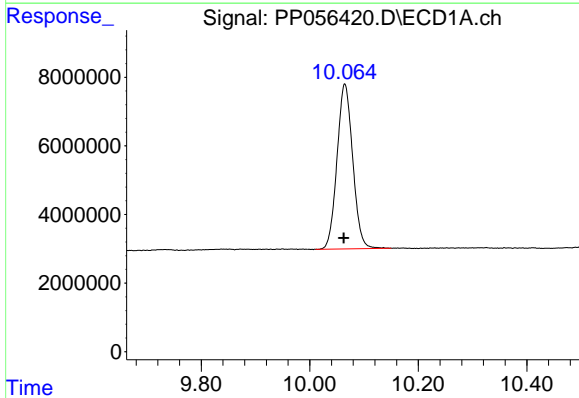
R.T.: 4.319 min  
 Delta R.T.: 0.001 min  
 Response: 88665574  
 Conc: 57.10 ng/ml

Instrument :  
 ECD\_P  
 ClientSampleId :  
 AR1242CCC500



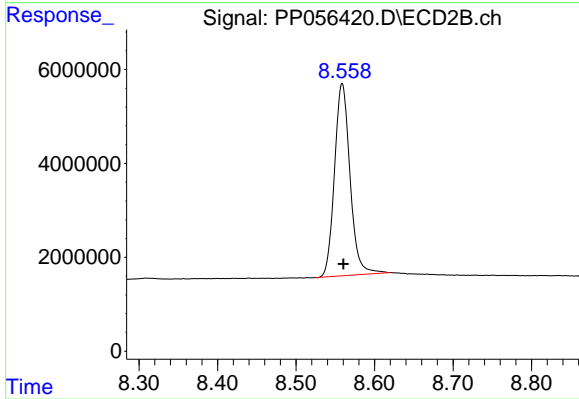
#1 Tetrachloro-m-xylene

R.T.: 3.560 min  
 Delta R.T.: 0.000 min  
 Response: 71915941  
 Conc: 50.97 ng/ml



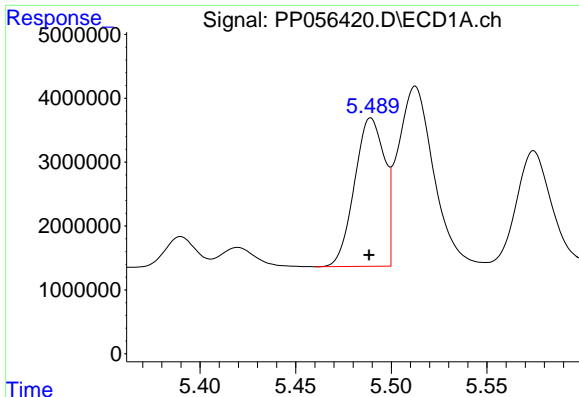
#2 Decachlorobiphenyl

R.T.: 10.065 min  
 Delta R.T.: 0.002 min  
 Response: 96387591  
 Conc: 48.52 ng/ml



#2 Decachlorobiphenyl

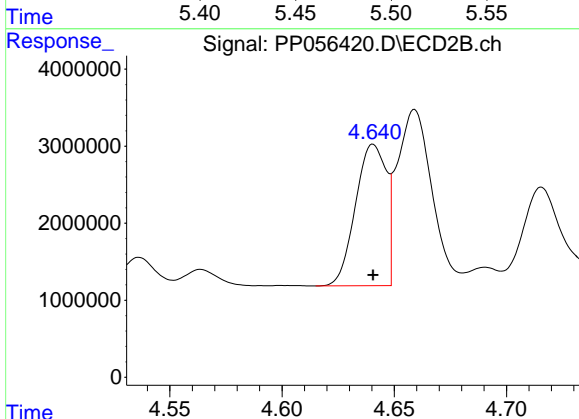
R.T.: 8.559 min  
 Delta R.T.: -0.002 min  
 Response: 56278701  
 Conc: 50.35 ng/ml



#16 AR-1242-1

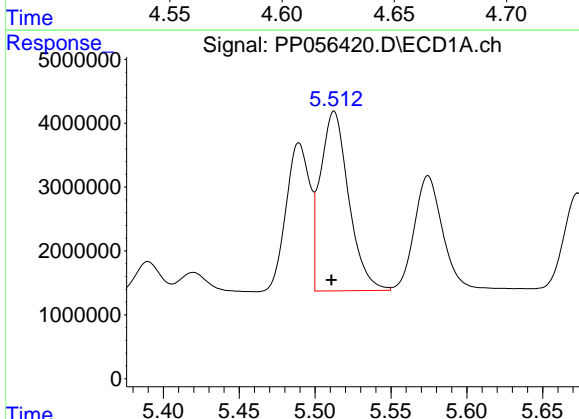
R.T.: 5.489 min  
 Delta R.T.: 0.000 min  
 Response: 25336180  
 Conc: 519.89 ng/ml

Instrument :  
 ECD\_P  
 ClientSampleId :  
 AR1242CCC500



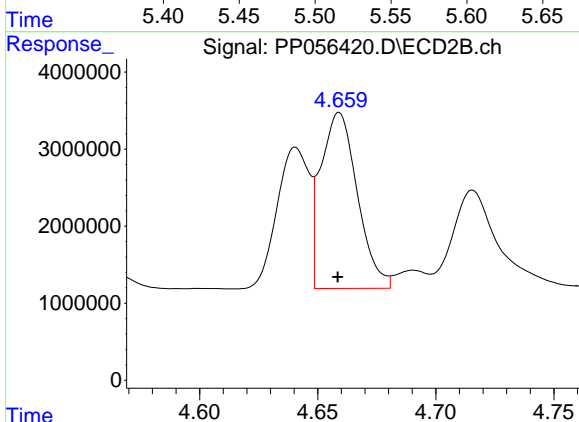
#16 AR-1242-1

R.T.: 4.641 min  
 Delta R.T.: 0.000 min  
 Response: 17494107  
 Conc: 494.70 ng/ml



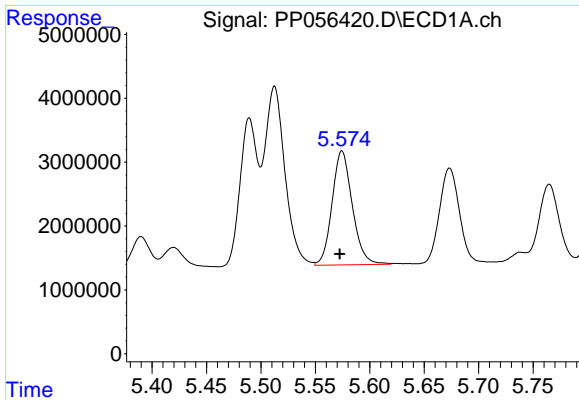
#17 AR-1242-2

R.T.: 5.513 min  
 Delta R.T.: 0.002 min  
 Response: 36513893  
 Conc: 511.77 ng/ml



#17 AR-1242-2

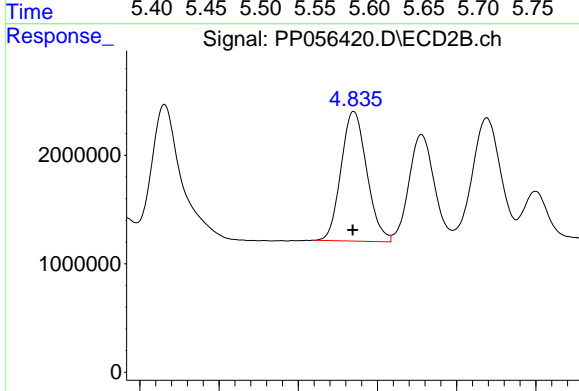
R.T.: 4.659 min  
 Delta R.T.: 0.000 min  
 Response: 24622855  
 Conc: 484.62 ng/ml



#18 AR-1242-3

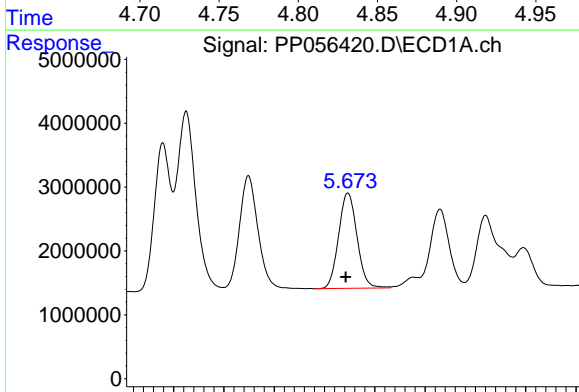
R.T.: 5.574 min  
 Delta R.T.: 0.002 min  
 Response: 23057413  
 Conc: 506.49 ng/ml

Instrument :  
 ECD\_P  
 ClientSampleId :  
 AR1242CCC500



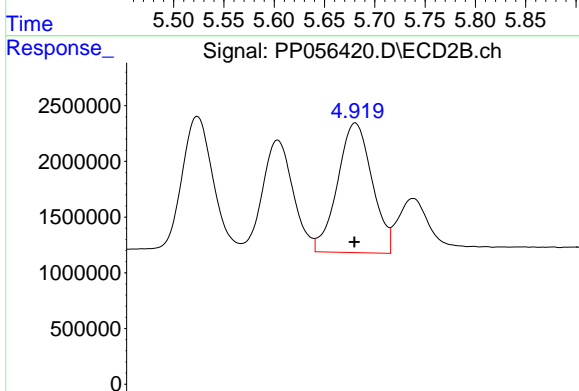
#18 AR-1242-3

R.T.: 4.835 min  
 Delta R.T.: 0.000 min  
 Response: 13504056  
 Conc: 500.43 ng/ml



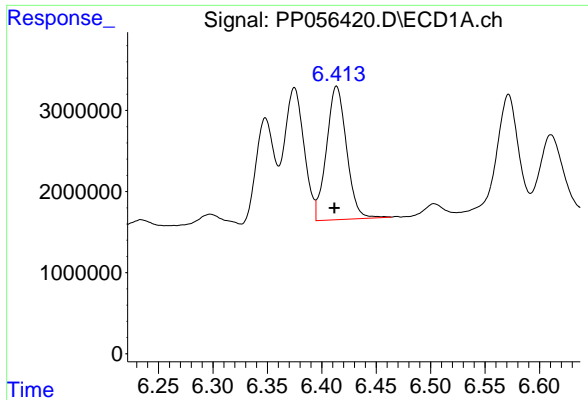
#19 AR-1242-4

R.T.: 5.673 min  
 Delta R.T.: 0.002 min  
 Response: 19012775  
 Conc: 531.94 ng/ml



#19 AR-1242-4

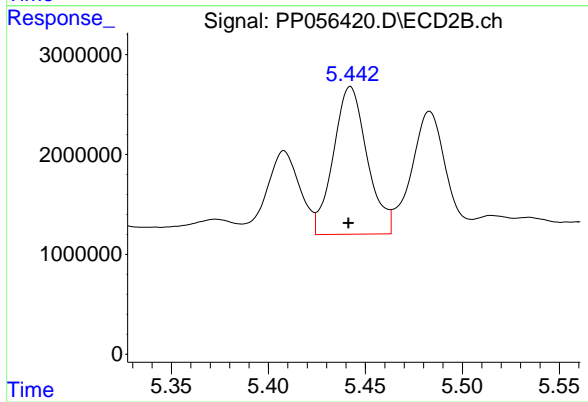
R.T.: 4.919 min  
 Delta R.T.: 0.000 min  
 Response: 14892584  
 Conc: 508.29 ng/ml



#20 AR-1242-5

R.T.: 6.414 min  
Delta R.T.: 0.002 min  
Response: 21110982  
Conc: 493.82 ng/ml

Instrument :  
ECD\_P  
ClientSampleId :  
AR1242CCC500



#20 AR-1242-5

R.T.: 5.442 min  
Delta R.T.: 0.001 min  
Response: 17938225  
Conc: 555.99 ng/ml