

Data Path : Z:\pestpcbsrv\HPCHEM1\ECD_P\Data\PP031125\
 Data File : PP070444.D
 Signal(s) : Signal #1: ECD1A.ch Signal #2: ECD2B.ch
 Acq On : 11 Mar 2025 22:00
 Operator : YP\AJ
 Sample : AR1254ICC050
 Misc :
 ALS Vial : 28 Sample Multiplier: 1

Instrument :
 ECD_P
ClientSampleId :
 AR1254ICC050

Integration File signal 1: autoint1.e
 Integration File signal 2: autoint2.e
 Quant Time: Mar 11 22:43:23 2025
 Quant Method : Z:\pestpcbsrv\HPCHEM1\ECD_P\methods\PP031125.M
 Quant Title : GC EXTRACTABLES
 QLast Update : Tue Mar 11 22:41:00 2025
 Response via : Initial Calibration
 Integrator: ChemStation

Volume Inj. : 2 µl
 Signal #1 Phase : ZB-MR1 Signal #2 Phase: ZB-MR2
 Signal #1 Info : 30Mx0.32mmx 0.50µ Signal #2 Info : 30M x 0.32mm x 0.25µm

Compound	RT#1	RT#2	Resp#1	Resp#2	ng/ml	ng/ml

System Monitoring Compounds						
1) SA Tetrachlo...	4.525	3.828	8190039	4946549	5.129	4.850
2) SA Decachlor...	10.249	8.879	5357119	5757506	4.733	5.297
Target Compounds						
26) L6 AR-1254-1	6.527	5.722	2919684	3096335	49.987	54.784
27) L6 AR-1254-2	6.743	5.870	3852617	2719612	46.003	56.045
28) L6 AR-1254-3	7.107	6.275	4209211	3937712	48.750	51.995
29) L6 AR-1254-4	7.388	6.503	3479126	2689850	48.568	50.355
30) L6 AR-1254-5	7.806	6.922	3508468	3731398	49.381	54.147

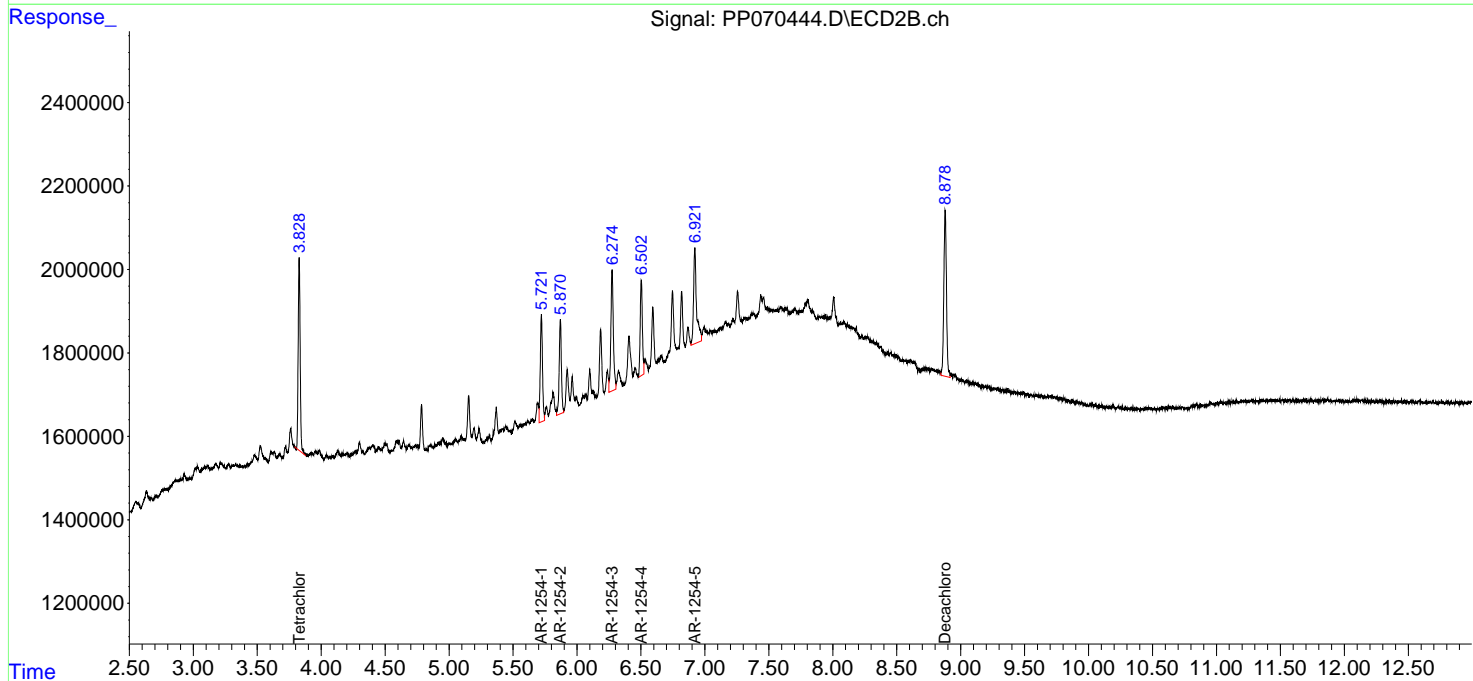
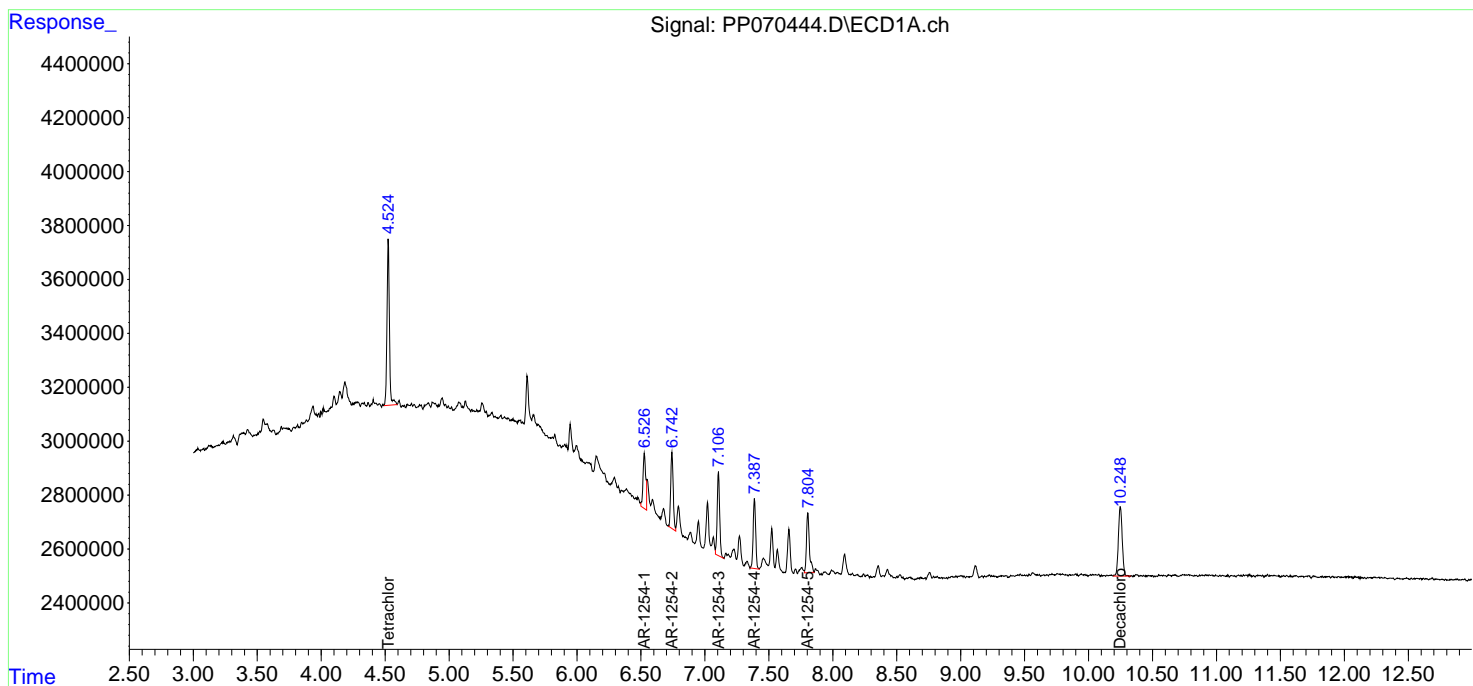
(f)=RT Delta > 1/2 Window (#)=Amounts differ by > 25% (m)=manual int.

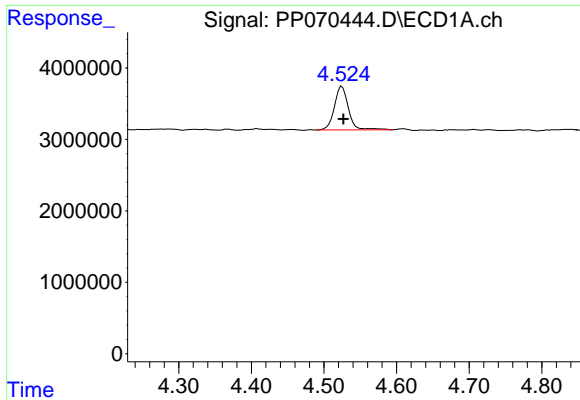
Data Path : Z:\pestpcbsrv\HPCHEM1\ECD_P\Data\PP031125\
 Data File : PP070444.D
 Signal(s) : Signal #1: ECD1A.ch Signal #2: ECD2B.ch
 Acq On : 11 Mar 2025 22:00
 Operator : YP\AJ
 Sample : AR1254IC050
 Misc :
 ALS Vial : 28 Sample Multiplier: 1

Instrument :
 ECD_P
 ClientSampleId :
 AR1254IC050

Integration File signal 1: autoint1.e
 Integration File signal 2: autoint2.e
 Quant Time: Mar 11 22:43:23 2025
 Quant Method : Z:\pestpcbsrv\HPCHEM1\ECD_P\methods\PP031125.M
 Quant Title : GC EXTRACTABLES
 QLast Update : Tue Mar 11 22:41:00 2025
 Response via : Initial Calibration
 Integrator: ChemStation

Volume Inj. : 2 µl
 Signal #1 Phase : ZB-MR1 Signal #2 Phase: ZB-MR2
 Signal #1 Info : 30Mx0.32mmx 0.50µ Signal #2 Info : 30M x 0.32mm x 0.25µm

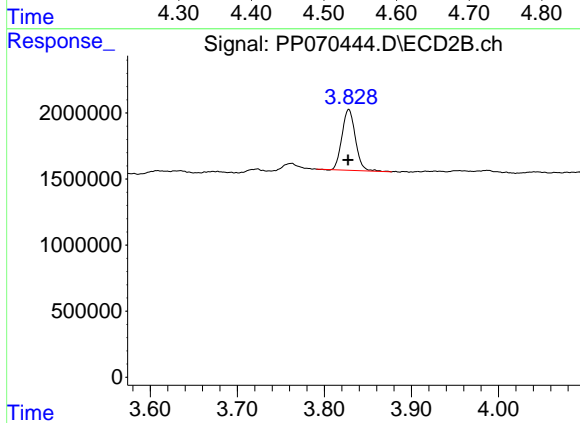




#1 Tetrachloro-m-xylene

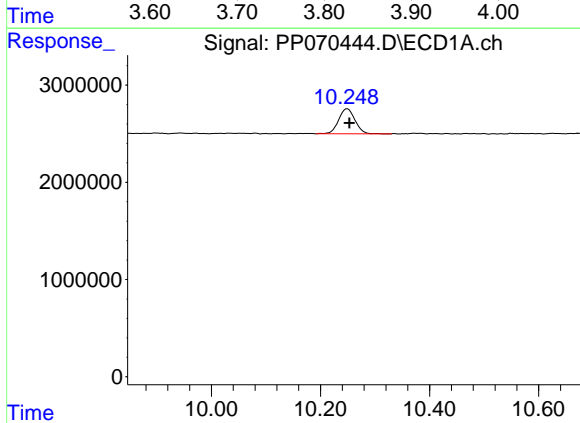
R.T.: 4.525 min
 Delta R.T.: -0.002 min
 Response: 8190039
 Conc: 5.13 ng/ml

Instrument :
 ECD_P
 ClientSampleId :
 AR1254ICC050



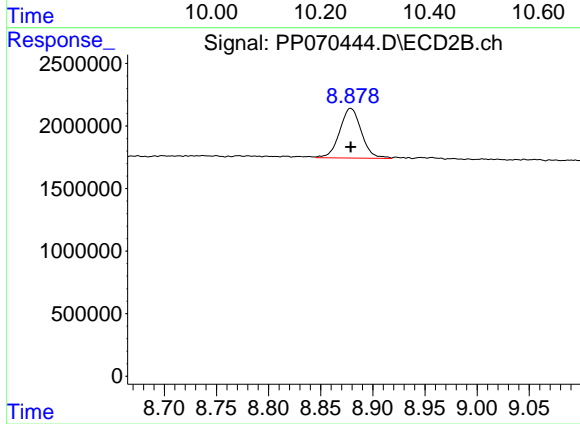
#1 Tetrachloro-m-xylene

R.T.: 3.828 min
 Delta R.T.: 0.001 min
 Response: 4946549
 Conc: 4.85 ng/ml



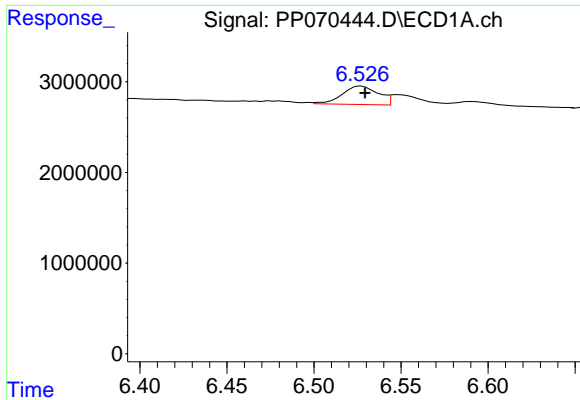
#2 Decachlorobiphenyl

R.T.: 10.249 min
 Delta R.T.: -0.004 min
 Response: 5357119
 Conc: 4.73 ng/ml



#2 Decachlorobiphenyl

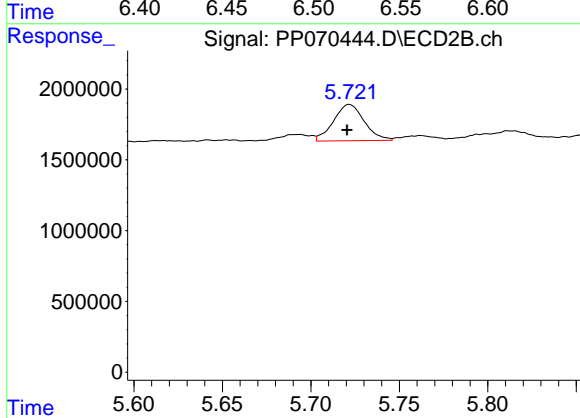
R.T.: 8.879 min
 Delta R.T.: 0.000 min
 Response: 5757506
 Conc: 5.30 ng/ml



#26 AR-1254-1

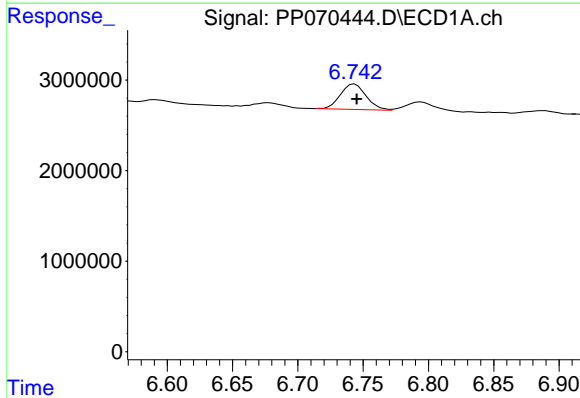
R.T.: 6.527 min
 Delta R.T.: -0.002 min
 Response: 2919684
 Conc: 49.99 ng/ml

Instrument :
 ECD_P
 ClientSampleId :
 AR1254ICC050



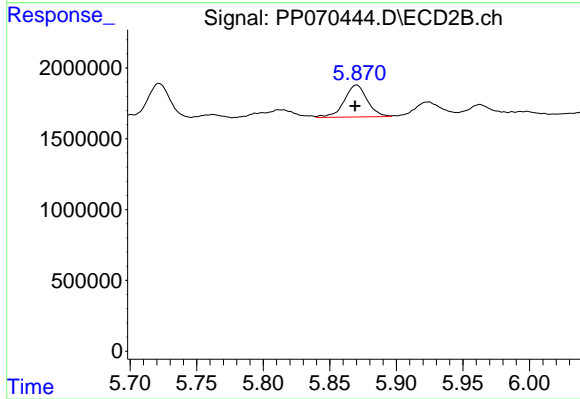
#26 AR-1254-1

R.T.: 5.722 min
 Delta R.T.: 0.001 min
 Response: 3096335
 Conc: 54.78 ng/ml



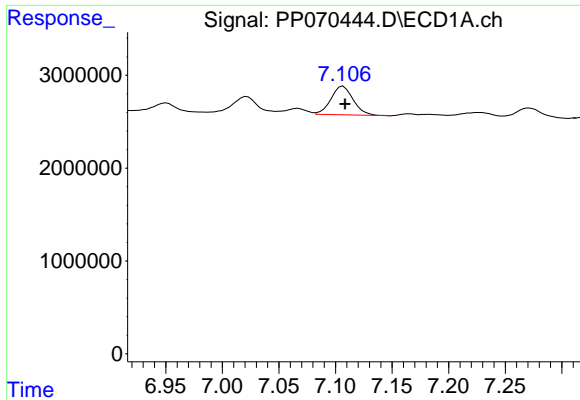
#27 AR-1254-2

R.T.: 6.743 min
 Delta R.T.: -0.002 min
 Response: 3852617
 Conc: 46.00 ng/ml



#27 AR-1254-2

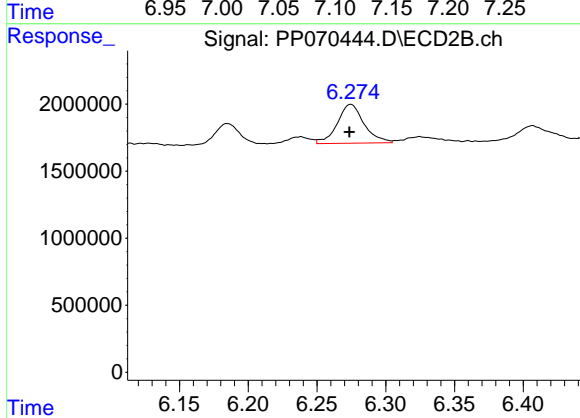
R.T.: 5.870 min
 Delta R.T.: 0.001 min
 Response: 2719612
 Conc: 56.05 ng/ml



#28 AR-1254-3

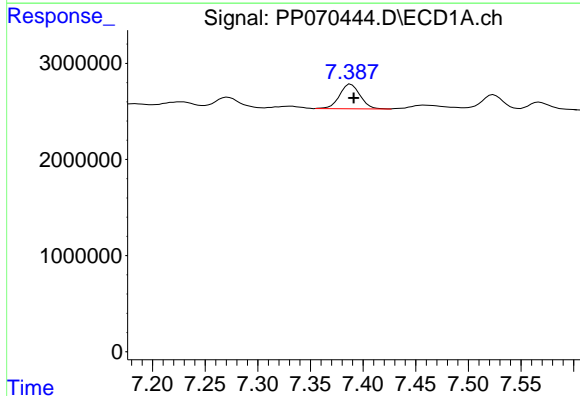
R.T.: 7.107 min
 Delta R.T.: -0.001 min
 Response: 4209211
 Conc: 48.75 ng/ml

Instrument :
 ECD_P
 ClientSampleId :
 AR1254ICC050



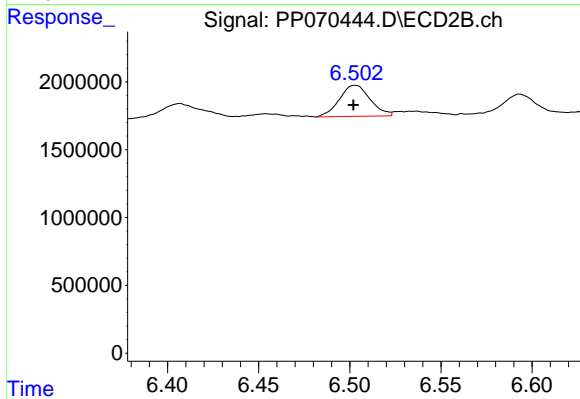
#28 AR-1254-3

R.T.: 6.275 min
 Delta R.T.: 0.000 min
 Response: 3937712
 Conc: 52.00 ng/ml



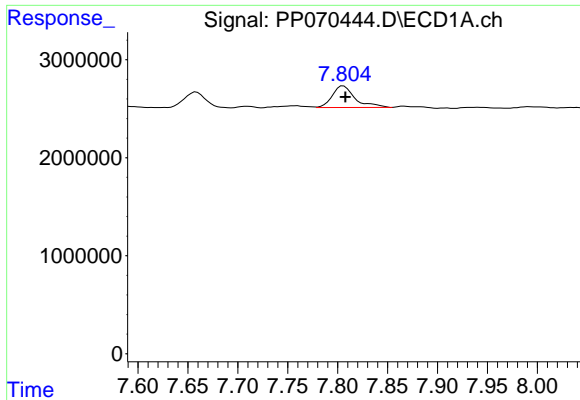
#29 AR-1254-4

R.T.: 7.388 min
 Delta R.T.: -0.003 min
 Response: 3479126
 Conc: 48.57 ng/ml



#29 AR-1254-4

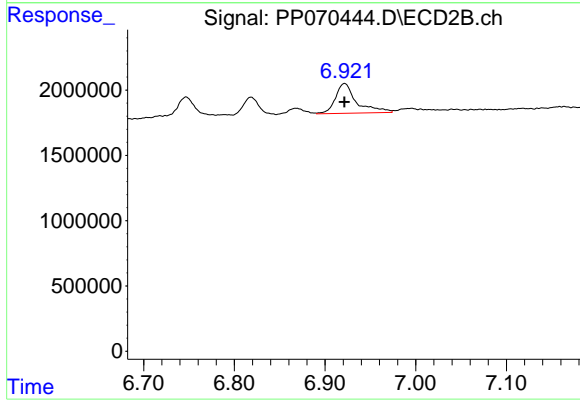
R.T.: 6.503 min
 Delta R.T.: 0.000 min
 Response: 2689850
 Conc: 50.36 ng/ml



#30 AR-1254-5

R.T.: 7.806 min
Delta R.T.: -0.002 min
Response: 3508468
Conc: 49.38 ng/ml

Instrument :
ECD_P
ClientSampleId :
AR1254IC050



#30 AR-1254-5

R.T.: 6.922 min
Delta R.T.: 0.000 min
Response: 3731398
Conc: 54.15 ng/ml