

Data Path : Z:\pestpcbsrv\HPCHEM1\ECD_P\Data\PP031125\
 Data File : PP070429.D
 Signal(s) : Signal #1: ECD1A.ch Signal #2: ECD2B.ch
 Acq On : 11 Mar 2025 17:56
 Operator : YP\AJ
 Sample : AR1232ICC050
 Misc :
 ALS Vial : 13 Sample Multiplier: 1

Instrument :
 ECD_P
ClientSampleId :
 AR1232ICC050

Manual Integrations
APPROVED
 Reviewed By :Yogesh Patel 03/19/2025
 Supervised By :mohammad ahmed 03/19/2025

Integration File signal 1: autoint1.e
 Integration File signal 2: autoint2.e
 Quant Time: Mar 11 22:00:28 2025
 Quant Method : Z:\pestpcbsrv\HPCHEM1\ECD_P\methods\PP031125.M
 Quant Title : GC EXTRACTABLES
 QLast Update : Tue Mar 11 21:58:44 2025
 Response via : Initial Calibration
 Integrator: ChemStation

Volume Inj. : 2 µl
 Signal #1 Phase : ZB-MR1 Signal #2 Phase: ZB-MR2
 Signal #1 Info : 30Mx0.32mmx 0.50µ Signal #2 Info : 30M x 0.32mm x 0.25µm

Compound	RT#1	RT#2	Resp#1	Resp#2	ng/ml	ng/ml

System Monitoring Compounds						
1) SA Tetrachlo...	4.526	3.828	7821901	5940731	4.803	5.784
2) SA Decachlor...	10.255	8.881	5277277	5419163	4.754	5.615
Target Compounds						
11) L3 AR-1232-1	4.889	4.201	1983848	1421614	56.981	54.939m
12) L3 AR-1232-2	5.414	4.934	781907	1431721	44.152m	56.863m#
13) L3 AR-1232-3	5.701	5.112	1856332	799405	49.304m	58.125
14) L3 AR-1232-4	5.859	5.196	1009484	627440	53.465m	53.731
15) L3 AR-1232-5	5.943	5.367	707014	698174	51.998m	53.493m

(f)=RT Delta > 1/2 Window (#)=Amounts differ by > 25% (m)=manual int.

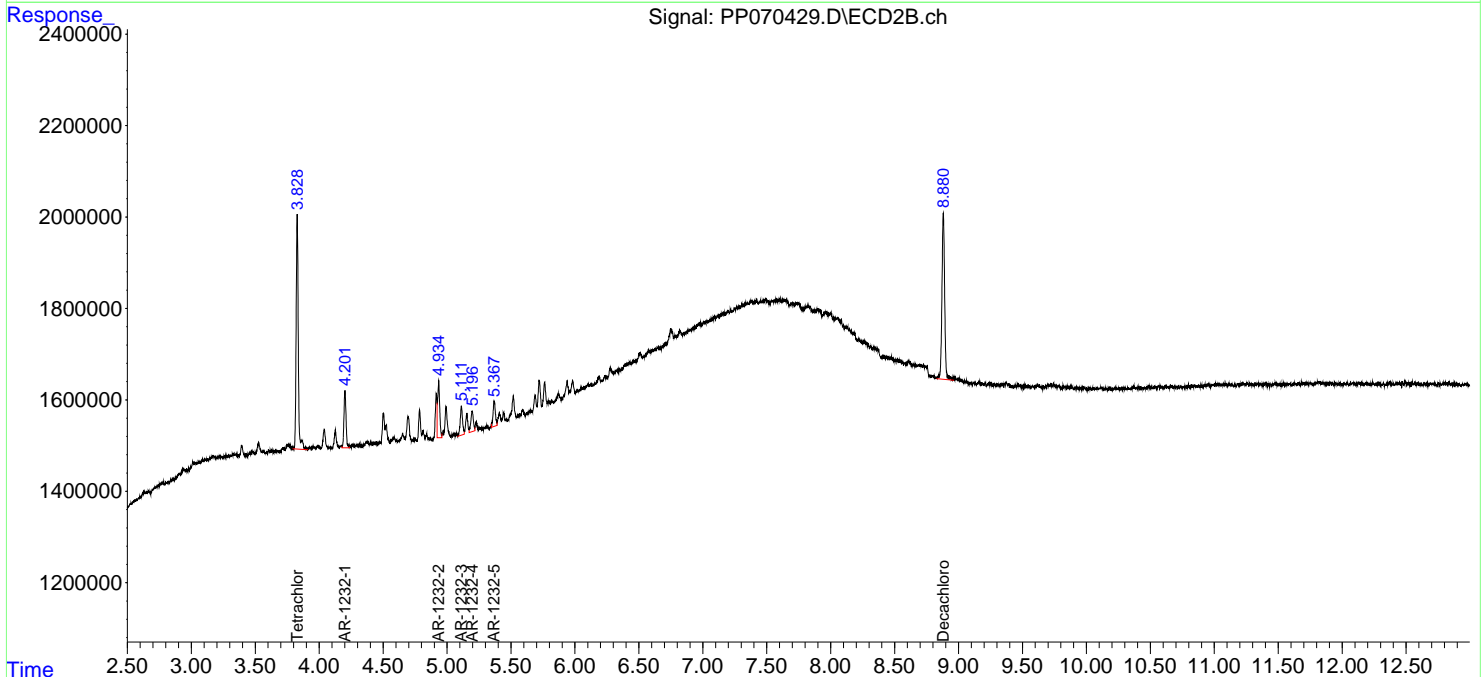
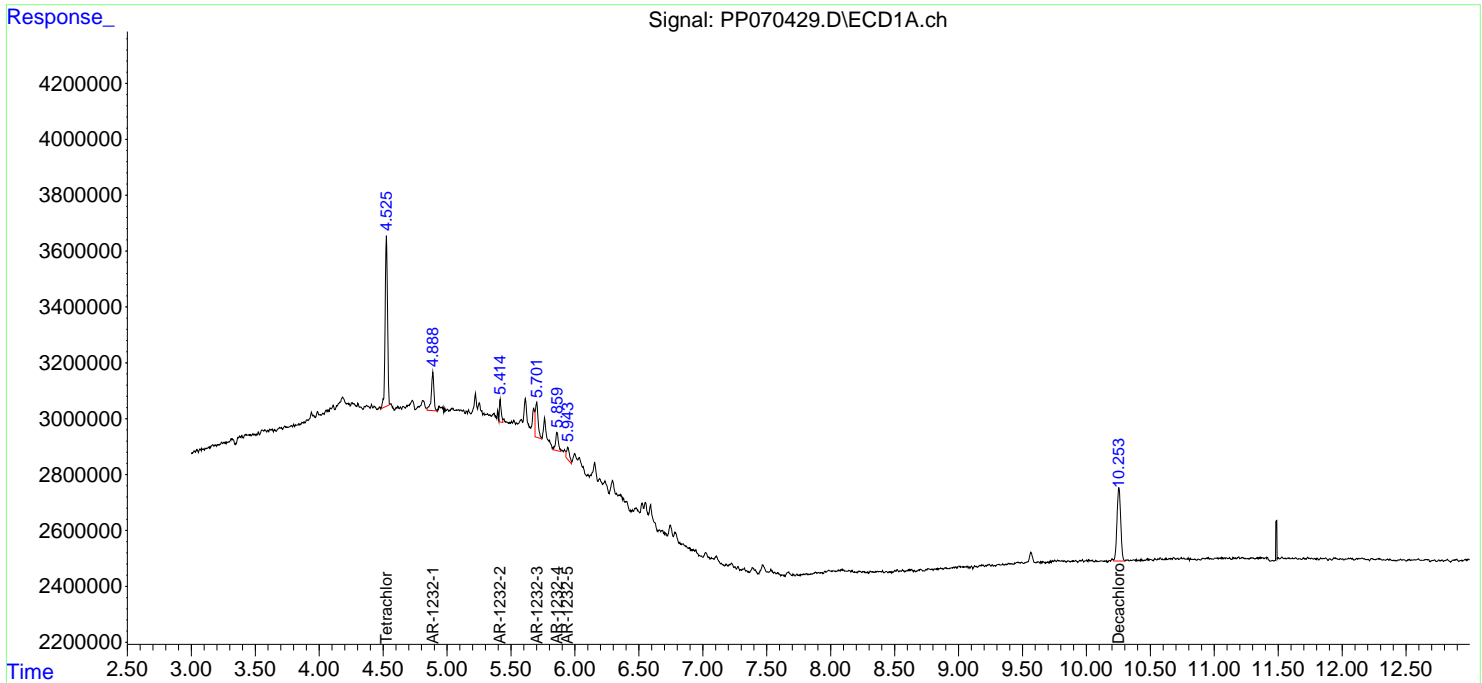
Data Path : Z:\pestpcbsrv\HPCHEM1\ECD_P\Data\PP031125\
 Data File : PP070429.D
 Signal(s) : Signal #1: ECD1A.ch Signal #2: ECD2B.ch
 Acq On : 11 Mar 2025 17:56
 Operator : YP\AJ
 Sample : AR1232IC050
 Misc :
 ALS Vial : 13 Sample Multiplier: 1

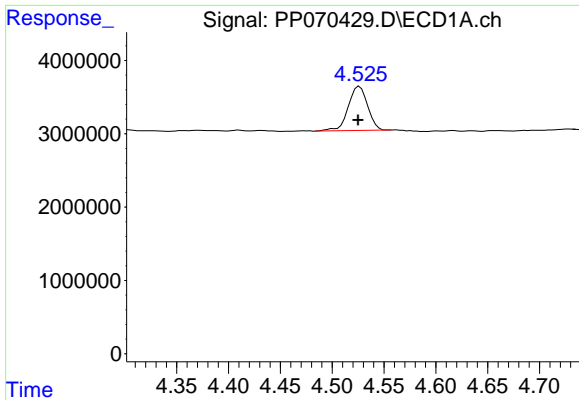
Instrument :
 ECD_P
ClientSampleId :
 AR1232IC050

Manual Integrations
APPROVED
 Reviewed By :Yogesh Patel 03/19/2025
 Supervised By :mohammad ahmed 03/19/2025

Integration File signal 1: autoint1.e
 Integration File signal 2: autoint2.e
 Quant Time: Mar 11 22:00:28 2025
 Quant Method : Z:\pestpcbsrv\HPCHEM1\ECD_P\methods\PP031125.M
 Quant Title : GC EXTRACTABLES
 QLast Update : Tue Mar 11 21:58:44 2025
 Response via : Initial Calibration
 Integrator: ChemStation

Volume Inj. : 2 µl
 Signal #1 Phase : ZB-MR1 Signal #2 Phase: ZB-MR2
 Signal #1 Info : 30Mx0.32mmx 0.50µ Signal #2 Info : 30M x 0.32mm x 0.25µm



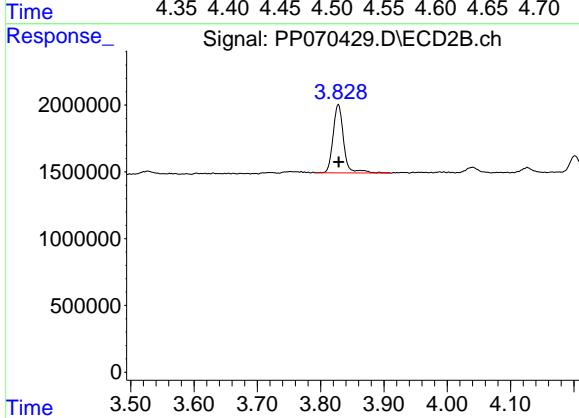


#1 Tetrachloro-m-xylene
 R.T.: 4.526 min
 Delta R.T.: 0.001 min
 Response: 7821901
 Conc: 4.80 ng/ml

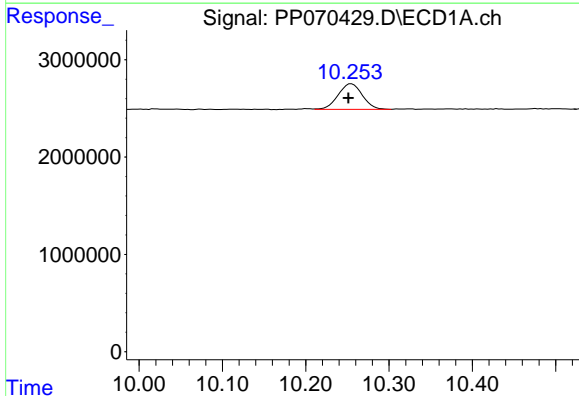
Instrument :
 ECD_P
 ClientSampleId :
 AR1232ICC050

Manual Integrations
APPROVED

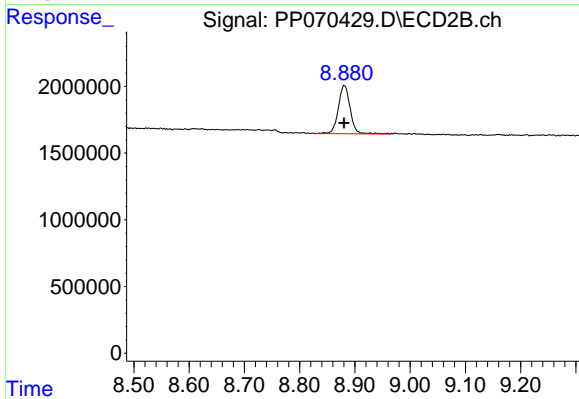
Reviewed By :Yogesh Patel 03/19/2025
 Supervised By :mohammad ahmed 03/19/2025



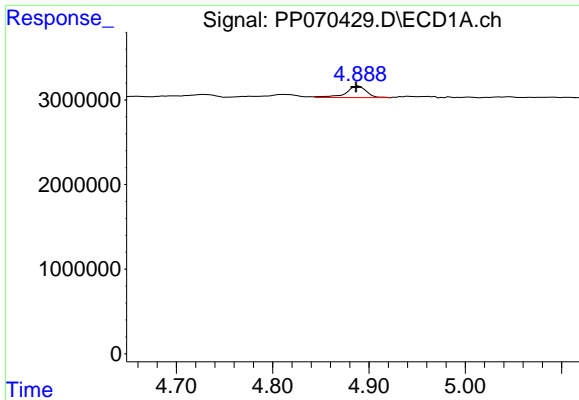
#1 Tetrachloro-m-xylene
 R.T.: 3.828 min
 Delta R.T.: 0.000 min
 Response: 5940731
 Conc: 5.78 ng/ml



#2 Decachlorobiphenyl
 R.T.: 10.255 min
 Delta R.T.: 0.003 min
 Response: 5277277
 Conc: 4.75 ng/ml



#2 Decachlorobiphenyl
 R.T.: 8.881 min
 Delta R.T.: 0.000 min
 Response: 5419163
 Conc: 5.62 ng/ml



#11 AR-1232-1

R.T.: 4.889 min
 Delta R.T.: 0.003 min
 Response: 1983848
 Conc: 56.98 ng/ml

Instrument :

ECD_P

ClientSampleId :

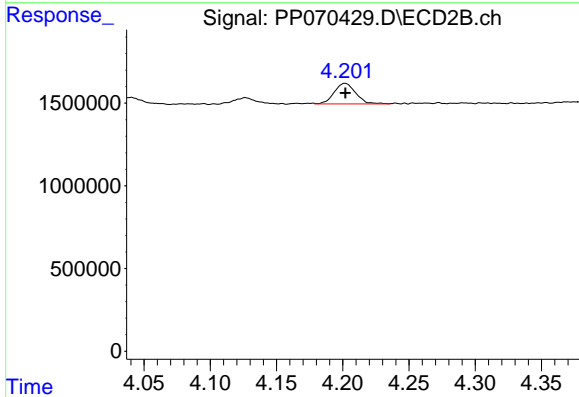
AR1232ICC050

Manual Integrations

APPROVED

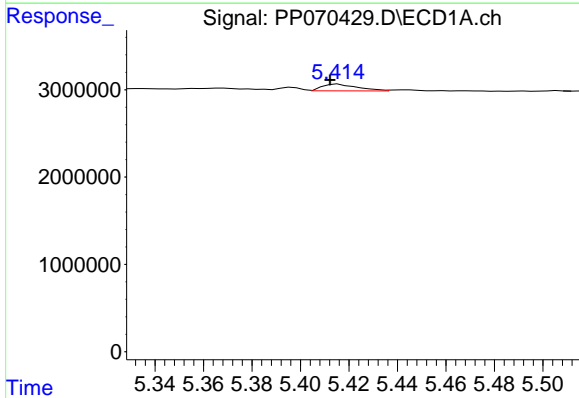
Reviewed By :Yogesh Patel 03/19/2025

Supervised By :mohammad ahmed 03/19/2025



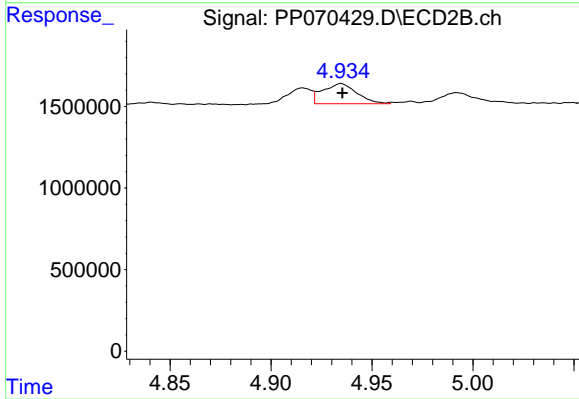
#11 AR-1232-1

R.T.: 4.201 min
 Delta R.T.: 0.000 min
 Response: 1421614
 Conc: 54.94 ng/ml m



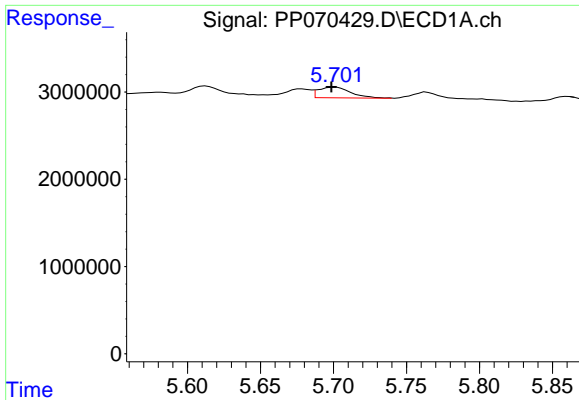
#12 AR-1232-2

R.T.: 5.414 min
 Delta R.T.: 0.002 min
 Response: 781907
 Conc: 44.15 ng/ml m



#12 AR-1232-2

R.T.: 4.934 min
 Delta R.T.: -0.001 min
 Response: 1431721
 Conc: 56.86 ng/ml m



#13 AR-1232-3

R.T.: 5.701 min
 Delta R.T.: 0.002 min
 Response: 1856332
 Conc: 49.30 ng/ml

Instrument :

ECD_P

ClientSampleId :

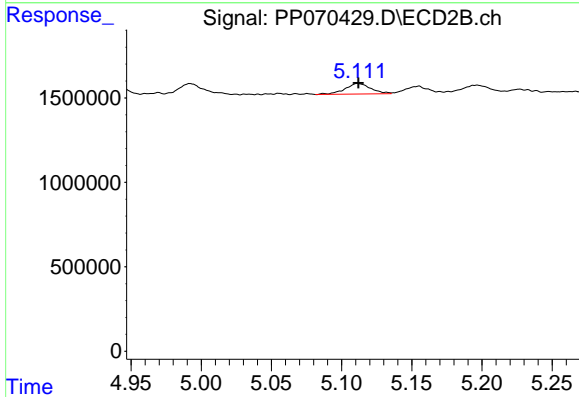
AR1232ICC050

Manual Integrations

APPROVED

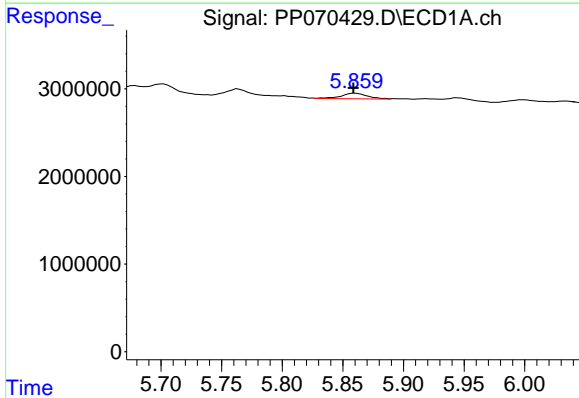
Reviewed By :Yogesh Patel 03/19/2025

Supervised By :mohammad ahmed 03/19/2025



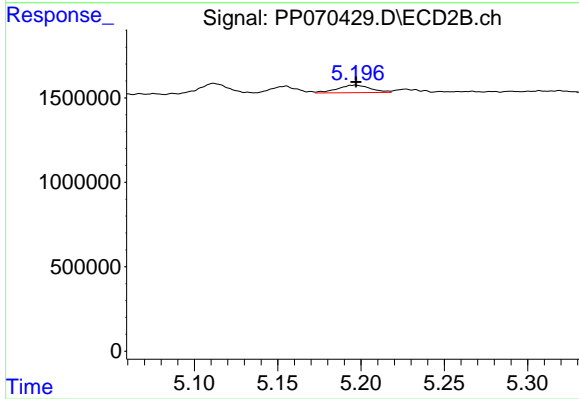
#13 AR-1232-3

R.T.: 5.112 min
 Delta R.T.: 0.000 min
 Response: 799405
 Conc: 58.13 ng/ml



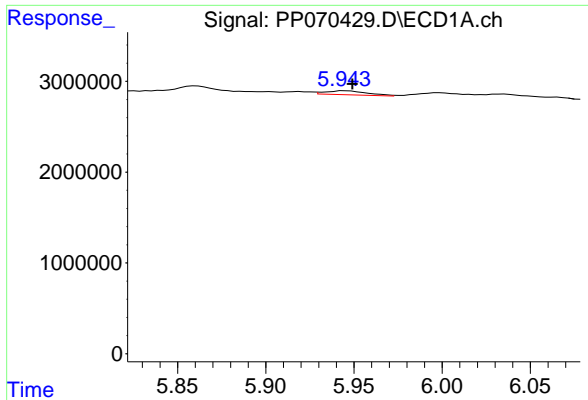
#14 AR-1232-4

R.T.: 5.859 min
 Delta R.T.: 0.000 min
 Response: 1009484
 Conc: 53.46 ng/ml m



#14 AR-1232-4

R.T.: 5.196 min
 Delta R.T.: 0.000 min
 Response: 627440
 Conc: 53.73 ng/ml



#15 AR-1232-5

R.T.: 5.943 min
 Delta R.T.: -0.006 min
 Response: 707014
 Conc: 52.00 ng/ml

Instrument :

ECD_P

ClientSampleId :

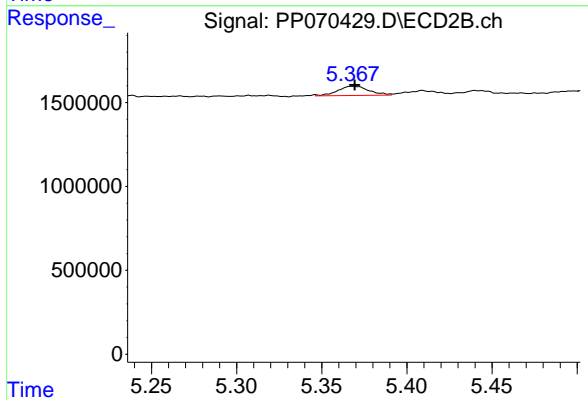
AR1232ICC050

Manual Integrations

APPROVED

Reviewed By :Yogesh Patel 03/19/2025

Supervised By :mohammad ahmed 03/19/2025



#15 AR-1232-5

R.T.: 5.367 min
 Delta R.T.: -0.003 min
 Response: 698174
 Conc: 53.49 ng/ml m