

Data Path : Z:\pestpcbsrv\HPCHEM1\ECD\_P\Data\PP031125\  
 Data File : PP070455.D  
 Signal(s) : Signal #1: ECD1A.ch Signal #2: ECD2B.ch  
 Acq On : 12 Mar 2025 00:59  
 Operator : YP\AJ  
 Sample : AR1254ICV500  
 Misc :  
 ALS Vial : 39 Sample Multiplier: 1

**Instrument :**  
 ECD\_P  
**ClientSampleId :**  
 ICVPP031125AR1254

Integration File signal 1: autoint1.e  
 Integration File signal 2: autoint2.e  
 Quant Time: Mar 12 01:56:03 2025  
 Quant Method : Z:\pestpcbsrv\HPCHEM1\ECD\_P\methods\PP031125.M  
 Quant Title : GC EXTRACTABLES  
 QLast Update : Wed Mar 12 01:49:19 2025  
 Response via : Initial Calibration  
 Integrator: ChemStation

Volume Inj. : 2 µl  
 Signal #1 Phase : ZB-MR1 Signal #2 Phase: ZB-MR2  
 Signal #1 Info : 30Mx0.32mmx 0.50µ Signal #2 Info : 30M x 0.32mm x 0.25µm

Compound	RT#1	RT#2	Resp#1	Resp#2	ng/ml	ng/ml
-----						
System Monitoring Compounds						
1) SA Tetrachlo...	4.525	3.827	82035673	53945391	51.568	53.445
2) SA Decachlor...	10.250	8.878	58425643	54856879	52.829	51.364
Target Compounds						
26) L6 AR-1254-1	6.527	5.721	29456235	28994348	514.431	514.789
27) L6 AR-1254-2	6.743	5.869	42978463	24997724	530.257	511.133
28) L6 AR-1254-3	7.106	6.274	43763209	38958184	519.927	516.564
29) L6 AR-1254-4	7.389	6.502	36692419	27576382	523.152	522.756
30) L6 AR-1254-5	7.805	6.921	36360967	35678139	520.504	516.666
-----						

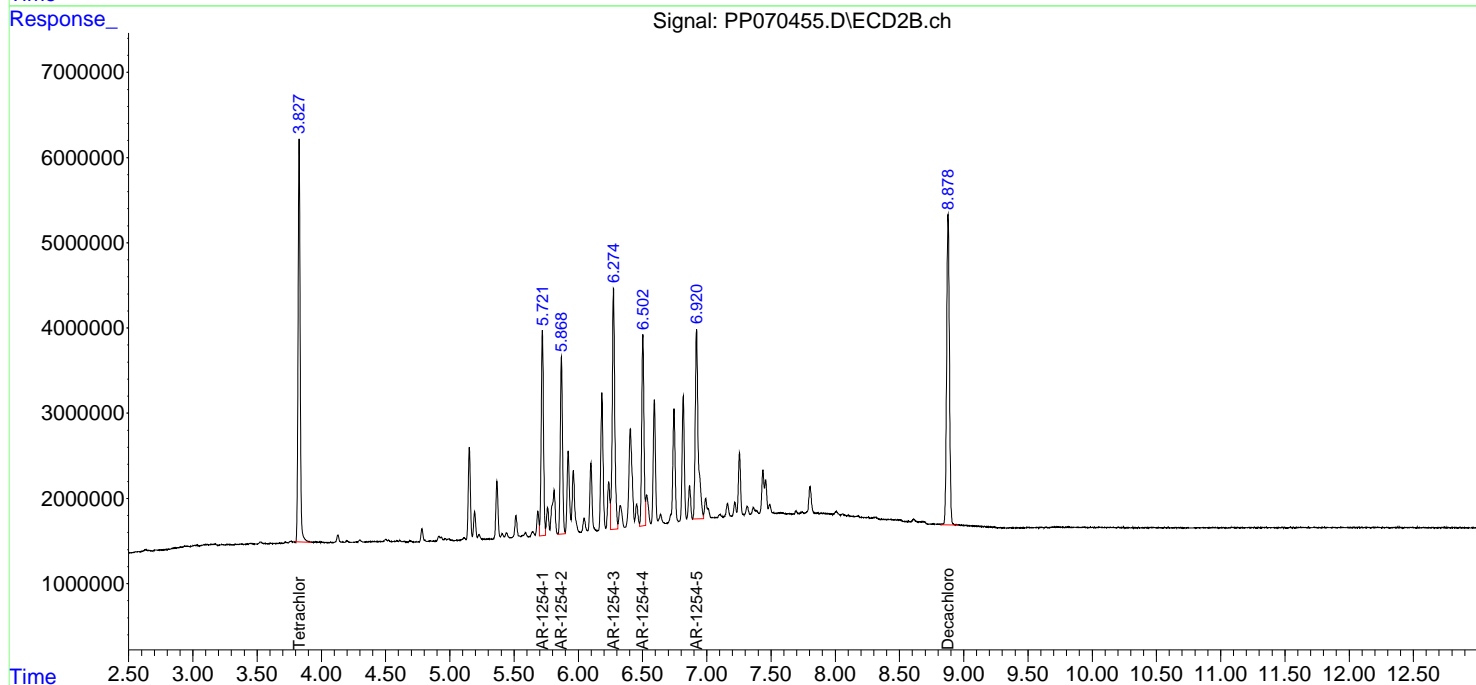
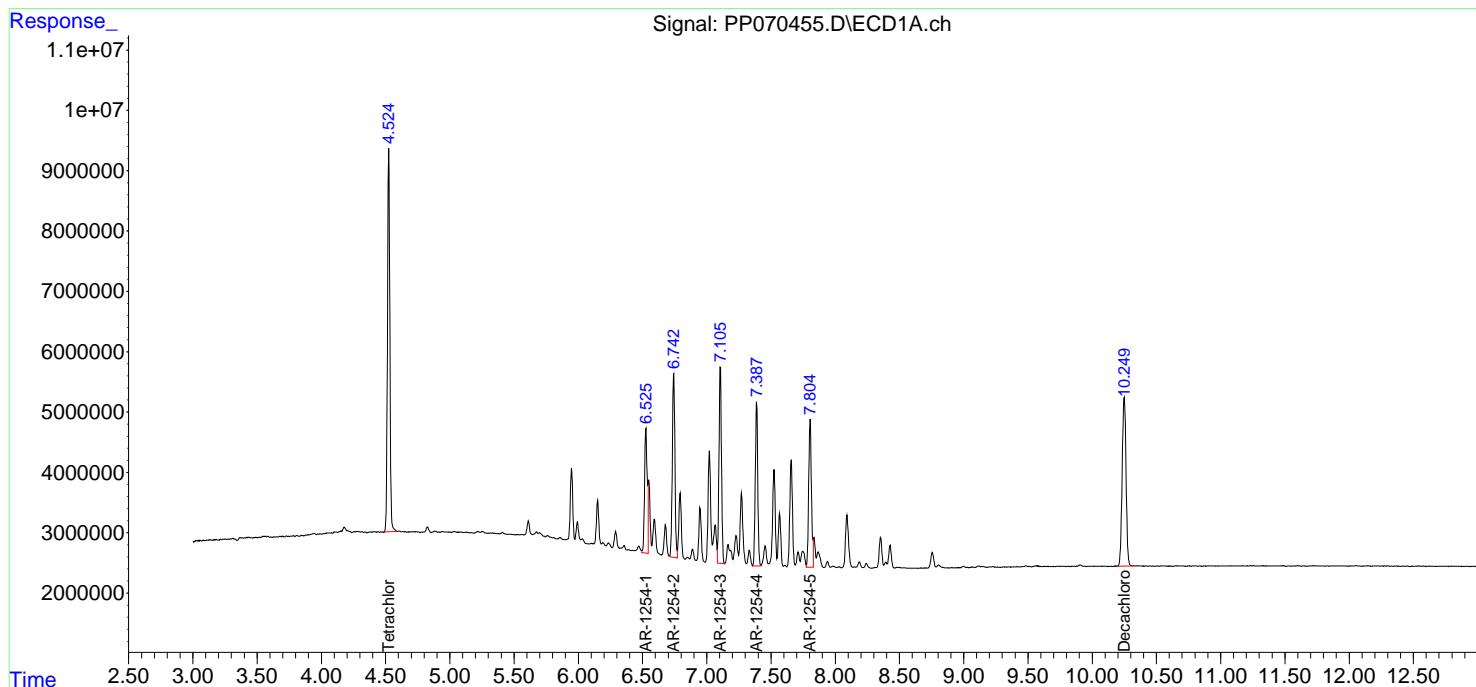
(f)=RT Delta > 1/2 Window (#)=Amounts differ by > 25% (m)=manual int.

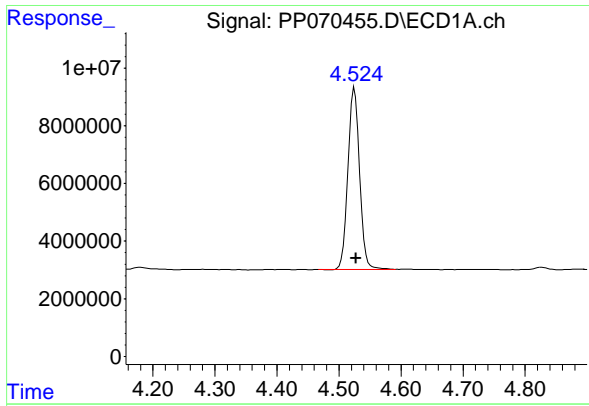
Data Path : Z:\pestpcbsrv\HPCHEM1\ECD\_P\Data\PP031125\  
 Data File : PP070455.D  
 Signal(s) : Signal #1: ECD1A.ch Signal #2: ECD2B.ch  
 Acq On : 12 Mar 2025 00:59  
 Operator : YP\AJ  
 Sample : AR1254ICV500  
 Misc :  
 ALS Vial : 39 Sample Multiplier: 1

Instrument :  
 ECD\_P  
 ClientSampleId :  
 ICVPP031125AR1254

Integration File signal 1: autoint1.e  
 Integration File signal 2: autoint2.e  
 Quant Time: Mar 12 01:56:03 2025  
 Quant Method : Z:\pestpcbsrv\HPCHEM1\ECD\_P\methods\PP031125.M  
 Quant Title : GC EXTRACTABLES  
 QLast Update : Wed Mar 12 01:49:19 2025  
 Response via : Initial Calibration  
 Integrator: ChemStation

Volume Inj. : 2 µl  
 Signal #1 Phase : ZB-MR1 Signal #2 Phase: ZB-MR2  
 Signal #1 Info : 30Mx0.32mmx 0.50µ Signal #2 Info : 30M x 0.32mm x 0.25µm

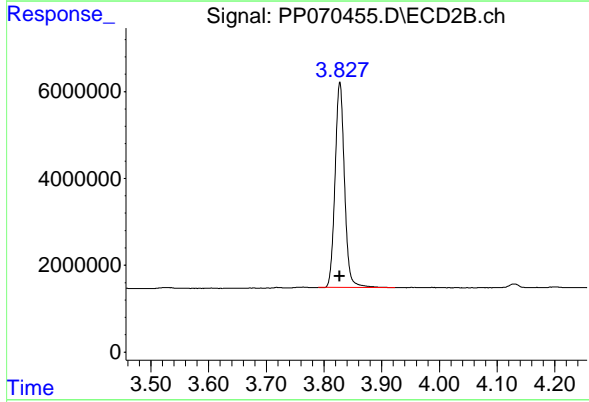




#1 Tetrachloro-m-xylene

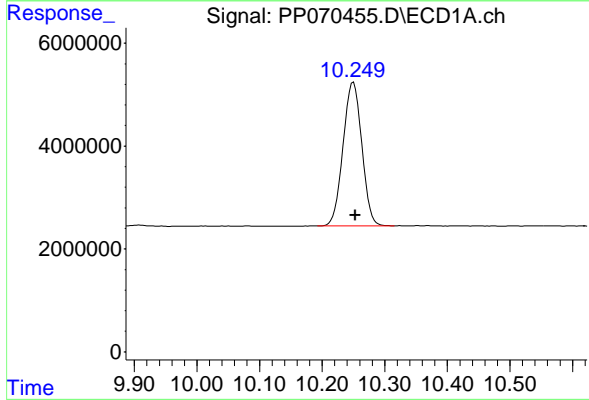
R.T.: 4.525 min  
 Delta R.T.: -0.002 min  
 Response: 82035673  
 Conc: 51.57 ng/ml

Instrument : ECD\_P  
 ClientSampleId : ICVPP031125AR1254



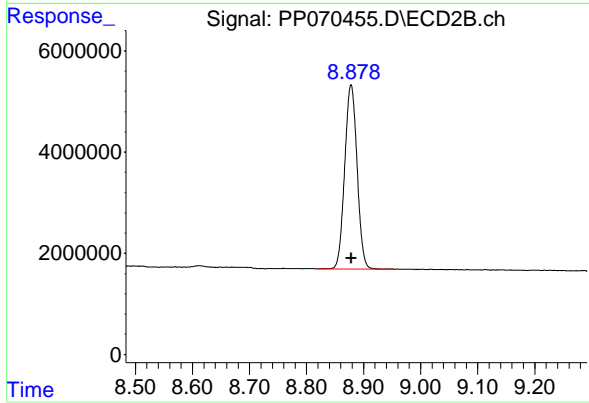
#1 Tetrachloro-m-xylene

R.T.: 3.827 min  
 Delta R.T.: 0.000 min  
 Response: 53945391  
 Conc: 53.45 ng/ml



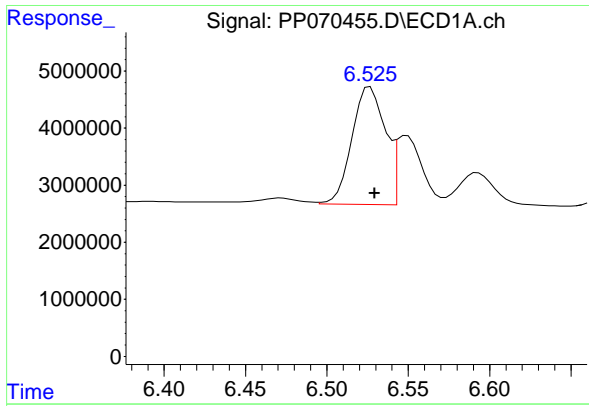
#2 Decachlorobiphenyl

R.T.: 10.250 min  
 Delta R.T.: -0.003 min  
 Response: 58425643  
 Conc: 52.83 ng/ml



#2 Decachlorobiphenyl

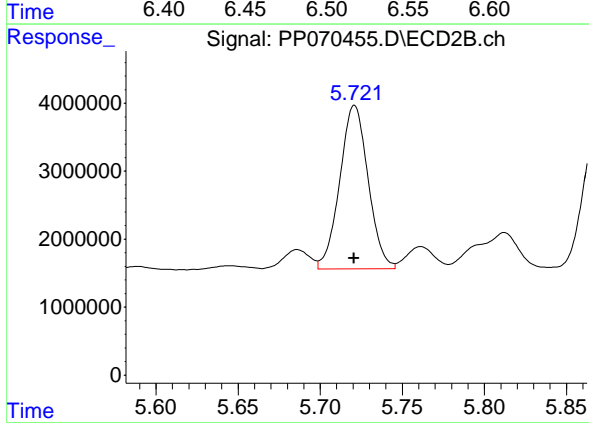
R.T.: 8.878 min  
 Delta R.T.: 0.000 min  
 Response: 54856879  
 Conc: 51.36 ng/ml



#26 AR-1254-1

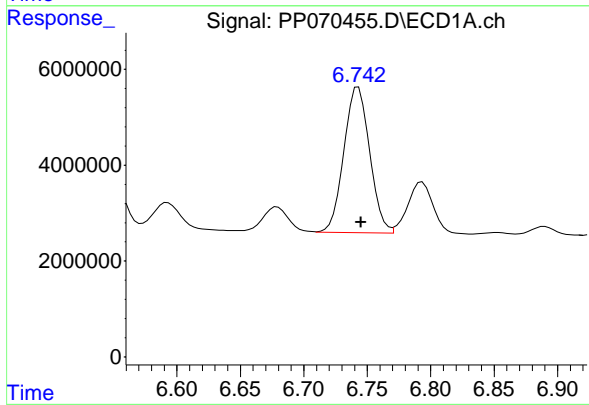
R.T.: 6.527 min  
 Delta R.T.: -0.003 min  
 Response: 29456235  
 Conc: 514.43 ng/ml

Instrument :  
 ECD\_P  
 ClientSampleId :  
 ICVPP031125AR1254



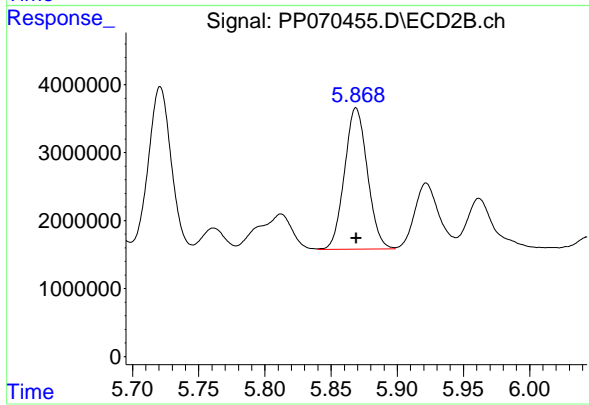
#26 AR-1254-1

R.T.: 5.721 min  
 Delta R.T.: 0.000 min  
 Response: 28994348  
 Conc: 514.79 ng/ml



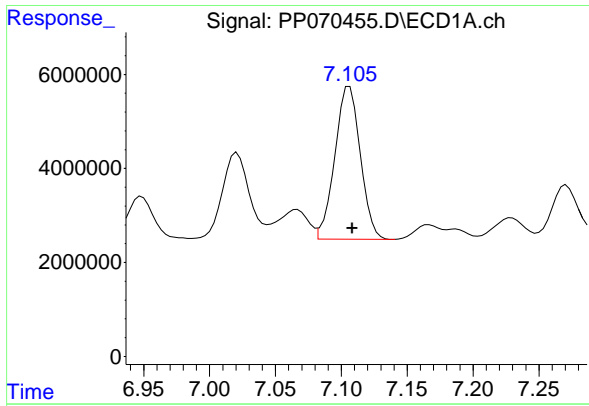
#27 AR-1254-2

R.T.: 6.743 min  
 Delta R.T.: -0.002 min  
 Response: 42978463  
 Conc: 530.26 ng/ml



#27 AR-1254-2

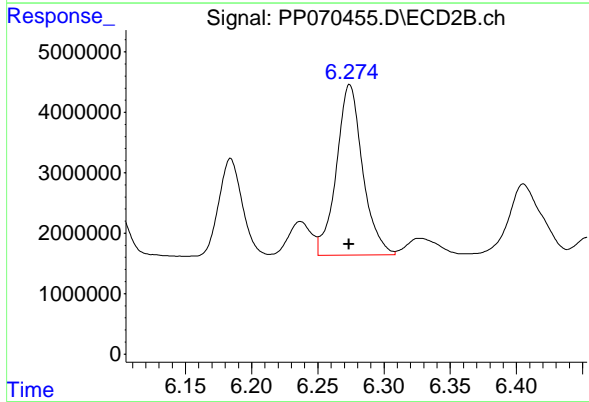
R.T.: 5.869 min  
 Delta R.T.: 0.000 min  
 Response: 24997724  
 Conc: 511.13 ng/ml



#28 AR-1254-3

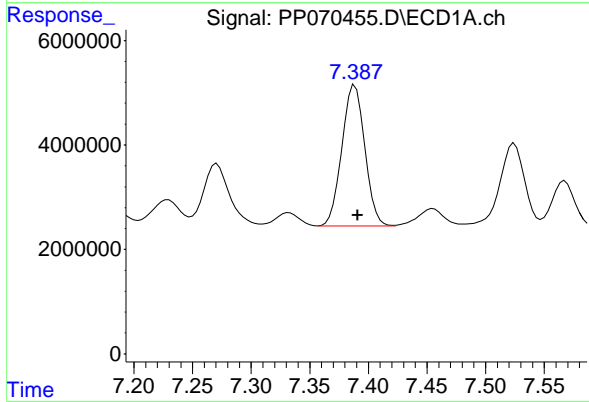
R.T.: 7.106 min  
 Delta R.T.: -0.002 min  
 Response: 43763209  
 Conc: 519.93 ng/ml

Instrument :  
 ECD\_P  
 ClientSampleId :  
 ICVPP031125AR1254



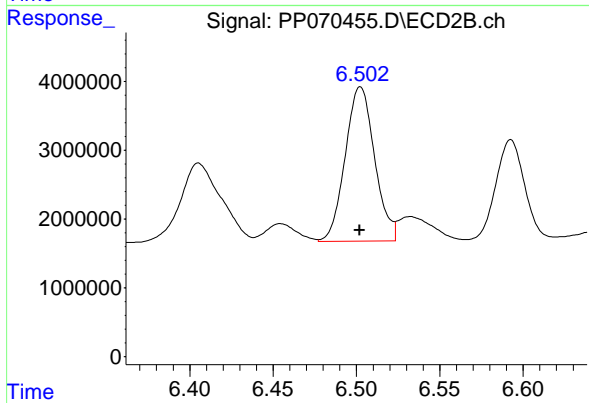
#28 AR-1254-3

R.T.: 6.274 min  
 Delta R.T.: 0.000 min  
 Response: 38958184  
 Conc: 516.56 ng/ml



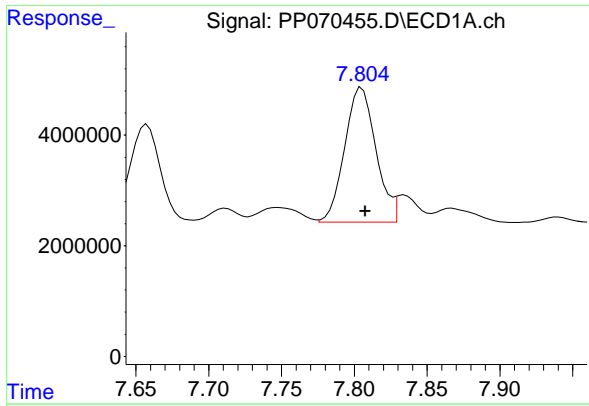
#29 AR-1254-4

R.T.: 7.389 min  
 Delta R.T.: -0.002 min  
 Response: 36692419  
 Conc: 523.15 ng/ml



#29 AR-1254-4

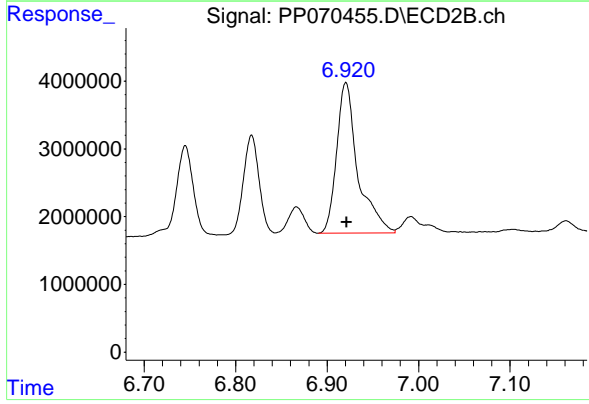
R.T.: 6.502 min  
 Delta R.T.: 0.000 min  
 Response: 27576382  
 Conc: 522.76 ng/ml



#30 AR-1254-5

R.T.: 7.805 min  
Delta R.T.: -0.003 min  
Response: 36360967  
Conc: 520.50 ng/ml

Instrument :  
ECD\_P  
ClientSampleId :  
ICVPP031125AR1254



#30 AR-1254-5

R.T.: 6.921 min  
Delta R.T.: 0.000 min  
Response: 35678139  
Conc: 516.67 ng/ml