

Data Path : Z:\pestpcbsrv\HPCHEM1\ECD_P\Data\PP031221\
 Data File : PP033936.D
 Signal(s) : Signal #1: ECD1A.CH Signal #2: ECD2B.CH
 Acq On : 12 Mar 2021 19:20
 Operator : DD\AJ
 Sample : M1647-19
 Misc :
 ALS Vial : 17 Sample Multiplier: 1

Instrument :
 ECD_P
 ClientSampled :

Integration File signal 1: autoint1.e
 Integration File signal 2: autoint2.e
 Quant Time: Mar 13 02:54:32 2021
 Quant Method : Z:\pestpcbsrv\HPCHEM1\ECD_P\methods\PP030921.M
 Quant Title : GC EXTRACTABLES
 QLast Update : Fri Mar 12 12:21:17 2021
 Response via : Initial Calibration
 Integrator: ChemStation 6890 Scale Mode: Small noise peaks clipped

Volume Inj. : 2 µl
 Signal #1 Phase : ZB-MR1 Signal #2 Phase: ZB-MR2
 Signal #1 Info : 30Mx0.32mmx 0.50µ Signal #2 Info : 30M x 0.32mm x 0.25µm

Compound	RT#1	RT#2	Resp#1	Resp#2	ng/ml	ng/ml
System Monitoring Compounds						
1) SA Tetrachlo...	4.858	4.270	1814671	888273	20.973	21.865
2) SA Decachlor...	10.789	9.594	1448658	447242	17.153	16.760
Target Compounds						
3) L1 AR-1016-1	6.143f	0.000	354669	0	133.127	N.D. #
5) L1 AR-1016-3	6.257	5.732	41135	22601	16.623	24.666 #
6) L1 AR-1016-4	6.375	0.000	50065	0	24.560	N.D. #
8) L2 AR-1221-1	5.110	0.000	141440	0	153.273	N.D. #
9) L2 AR-1221-2	5.187f	4.618	757724	25297	1078.337	78.179 #
10) L2 AR-1221-3	5.303	0.000	71094	0	33.777	N.D. #
11) L3 AR-1232-1	5.303	0.000	71094	0	41.092	N.D. #
12) L3 AR-1232-2	5.850f	0.000	202356	0	220.951	N.D. #
13) L3 AR-1232-3	0.000	5.732	0	22601	N.D.	58.772 #
14) L3 AR-1232-4	6.375	5.842	50065	31479	58.607	94.383 #
15) L3 AR-1232-5	6.444f	0.000	58479	0	98.576	N.D. #
16) L4 AR-1242-1	6.143f	0.000	354669	0	174.795	N.D. #
18) L4 AR-1242-3	6.257	5.732	41135	22601	21.530	32.007 #
19) L4 AR-1242-4	6.375	5.842	50065	31479	32.189	45.977 #
20) L4 AR-1242-5	7.144	6.374f	108774	32437	67.762	40.577 #
21) L5 AR-1248-1	6.143f	0.000	354669	0	227.358	N.D. #
22) L5 AR-1248-2	6.444f	0.000	58479	0	27.472	N.D. #
23) L5 AR-1248-3	0.000	5.842	0	31479	N.D.	31.263 #
25) L5 AR-1248-5	7.144	6.432	108774	41971	39.883	38.966
26) L6 AR-1254-1	0.000	6.374f	0	32437	N.D.	19.896 #
30) L6 AR-1254-5	8.415	0.000	82550	0	20.972	N.D. #
32) L7 AR-1260-2	8.141f	0.000	82877	0	20.129	N.D. #
33) L7 AR-1260-3	0.000	7.447f	0	30621	N.D.	18.080 #

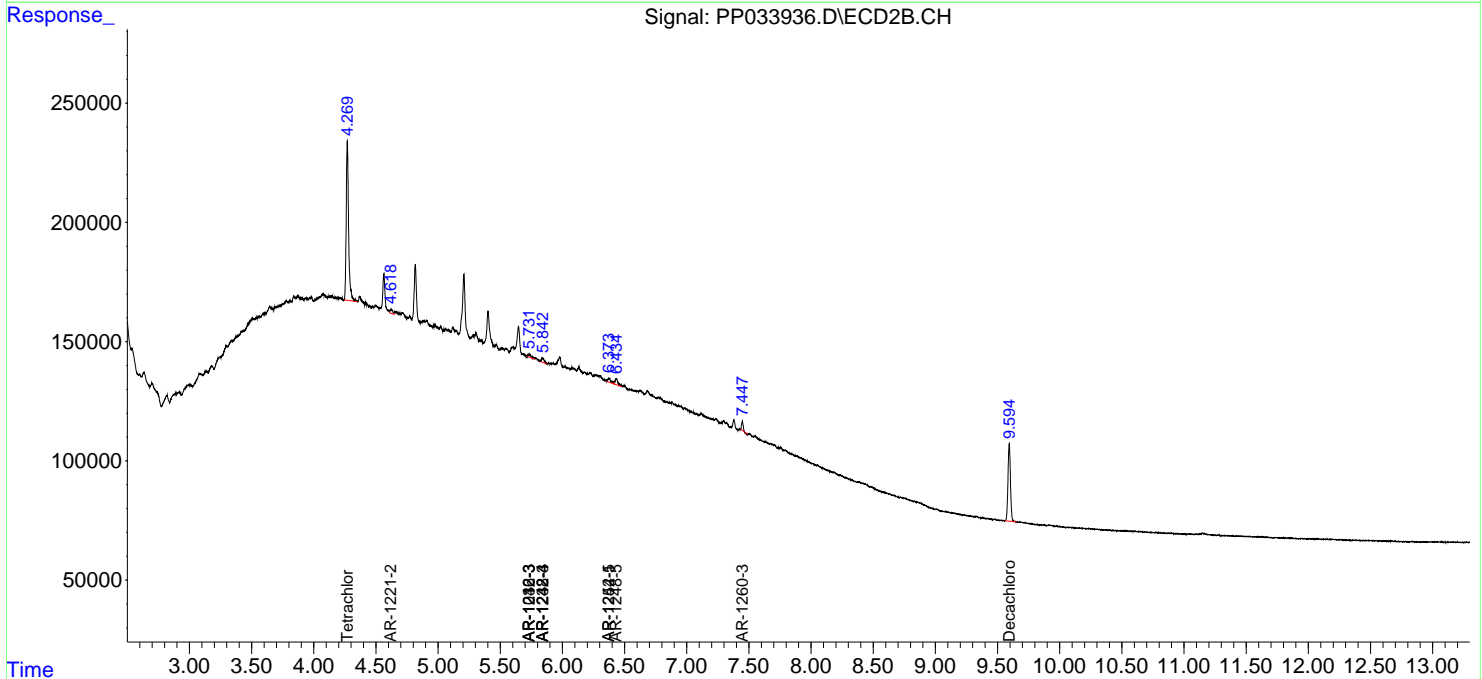
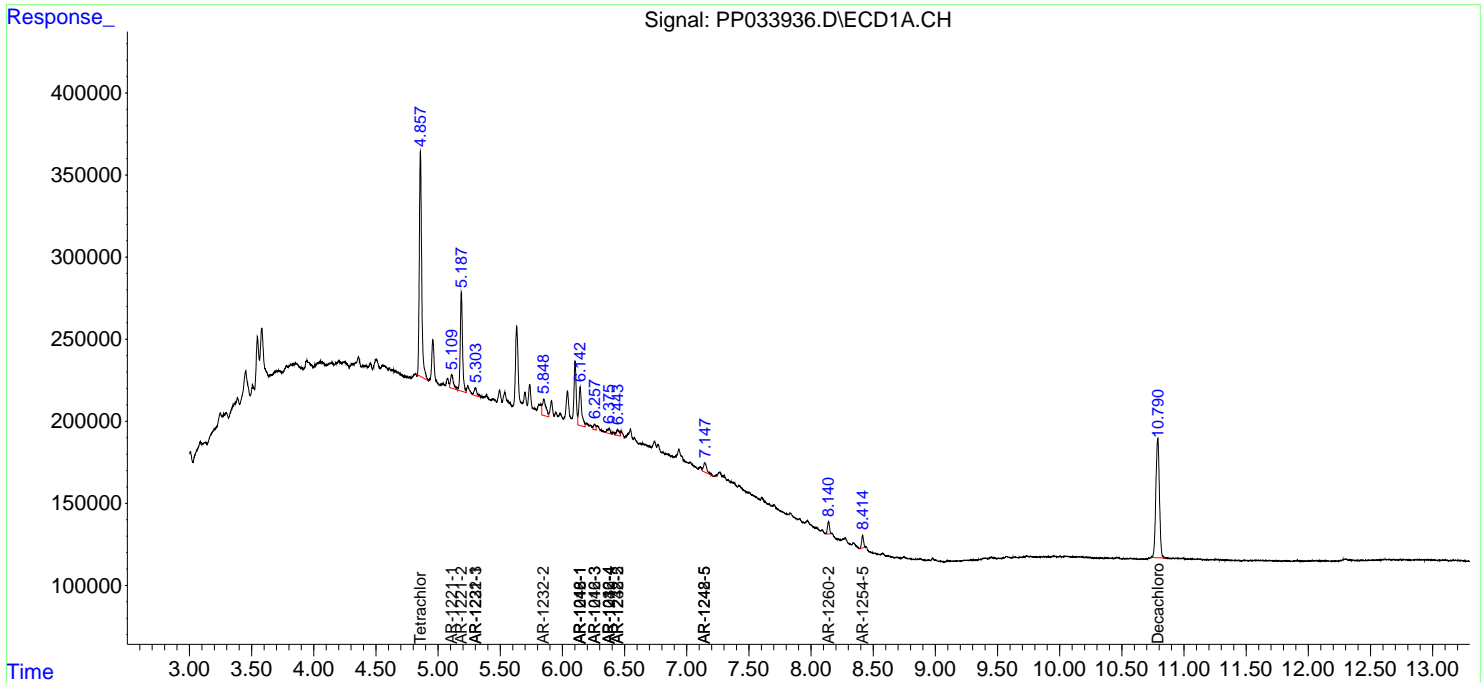
(f)=RT Delta > 1/2 Window (#)=Amounts differ by > 25% (m)=manual int.

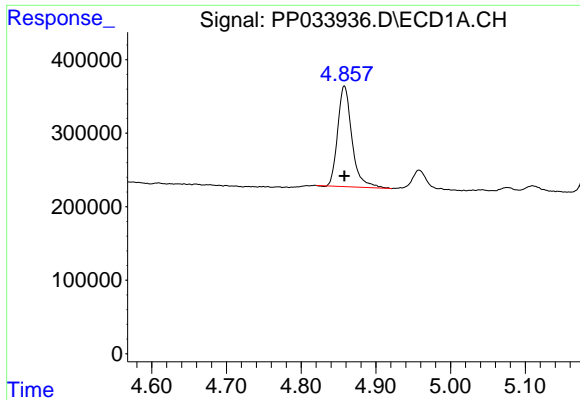
Data Path : Z:\pestpcbsrv\HPCHEM1\ECD_P\Data\PP031221\
 Data File : PP033936.D
 Signal(s) : Signal #1: ECD1A.CH Signal #2: ECD2B.CH
 Acq On : 12 Mar 2021 19:20
 Operator : DD\AJ
 Sample : M1647-19
 Misc :
 ALS Vial : 17 Sample Multiplier: 1

Instrument :
 ECD_P
 ClientSampled :

Integration File signal 1: autoint1.e
 Integration File signal 2: autoint2.e
 Quant Time: Mar 13 02:54:32 2021
 Quant Method : Z:\pestpcbsrv\HPCHEM1\ECD_P\methods\PP030921.M
 Quant Title : GC EXTRACTABLES
 QLast Update : Fri Mar 12 12:21:17 2021
 Response via : Initial Calibration
 Integrator: ChemStation 6890 Scale Mode: Small noise peaks clipped

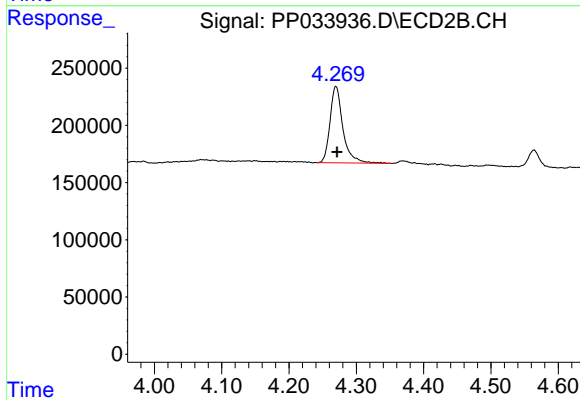
Volume Inj. : 2 µl
 Signal #1 Phase : ZB-MR1 Signal #2 Phase: ZB-MR2
 Signal #1 Info : 30Mx0.32mmx 0.50µ Signal #2 Info : 30M x 0.32mm x 0.25µm



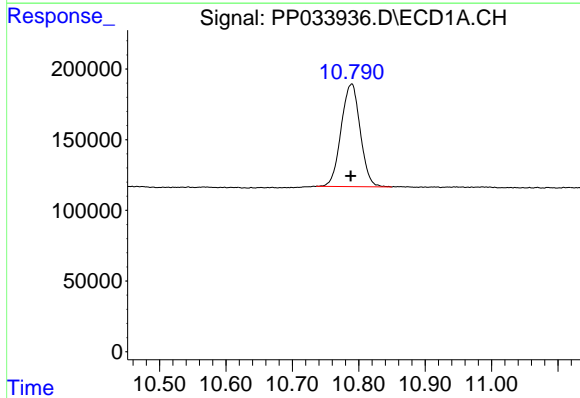


#1 Tetrachloro-m-xylene
 R.T.: 4.858 min
 Delta R.T.: 0.000 min
 Response: 1814671
 Conc: 20.97 ng/ml

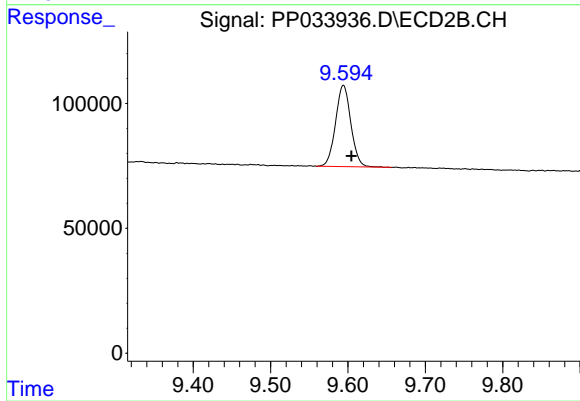
Instrument :
 ECD_P
 ClientSampleId :



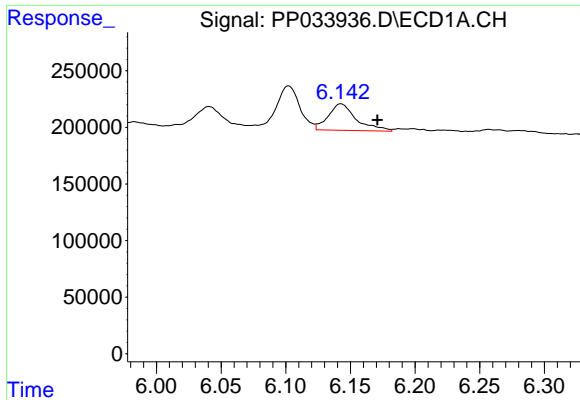
#1 Tetrachloro-m-xylene
 R.T.: 4.270 min
 Delta R.T.: -0.001 min
 Response: 888273
 Conc: 21.86 ng/ml



#2 Decachlorobiphenyl
 R.T.: 10.789 min
 Delta R.T.: 0.002 min
 Response: 1448658
 Conc: 17.15 ng/ml

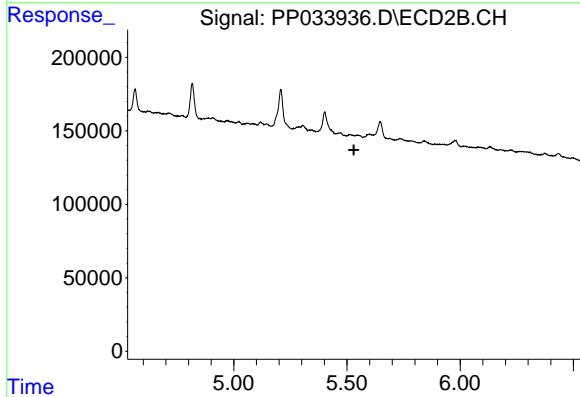


#2 Decachlorobiphenyl
 R.T.: 9.594 min
 Delta R.T.: -0.010 min
 Response: 447242
 Conc: 16.76 ng/ml

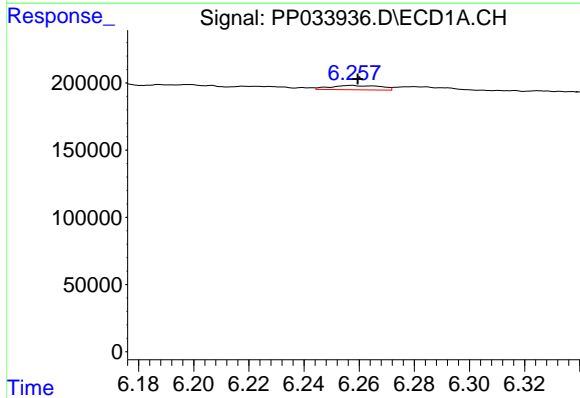


#3 AR-1016-1
 R.T.: 6.143 min
 Delta R.T.: -0.028 min
 Response: 354669
 Conc: 133.13 ng/ml

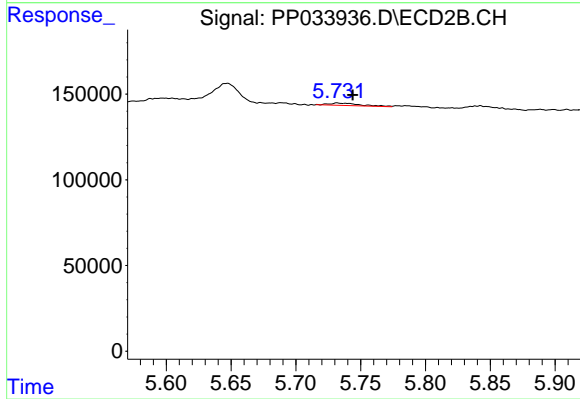
Instrument :
 ECD_P
 ClientSampled :



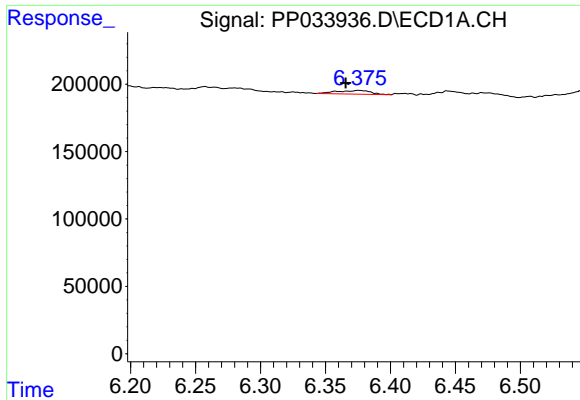
#3 AR-1016-1
 R.T.: 0.000 min
 Exp R.T. : 5.530 min
 Response: 0
 Conc: N.D.



#5 AR-1016-3
 R.T.: 6.257 min
 Delta R.T.: -0.002 min
 Response: 41135
 Conc: 16.62 ng/ml



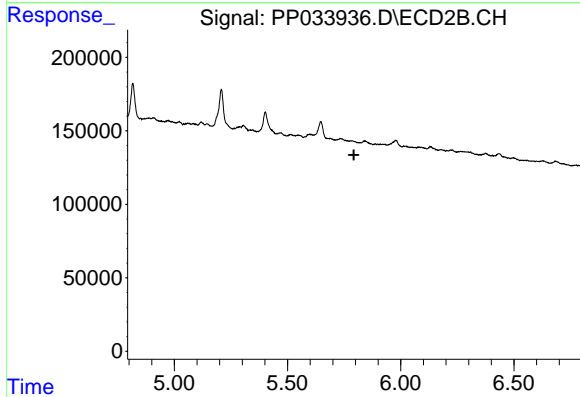
#5 AR-1016-3
 R.T.: 5.732 min
 Delta R.T.: -0.012 min
 Response: 22601
 Conc: 24.67 ng/ml



#6 AR-1016-4

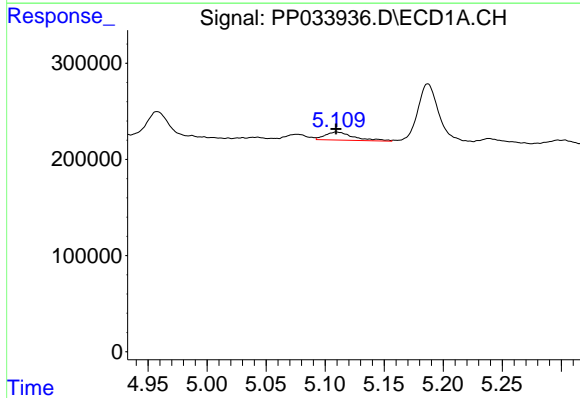
R.T.: 6.375 min
 Delta R.T.: 0.010 min
 Response: 50065
 Conc: 24.56 ng/ml

Instrument :
 ECD_P
 ClientSampled :



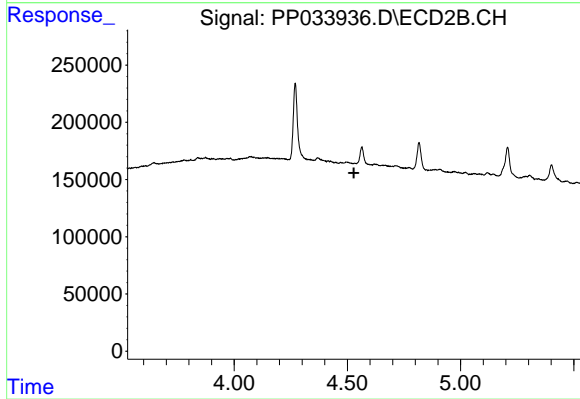
#6 AR-1016-4

R.T.: 0.000 min
 Exp R.T. : 5.793 min
 Response: 0
 Conc: N.D.



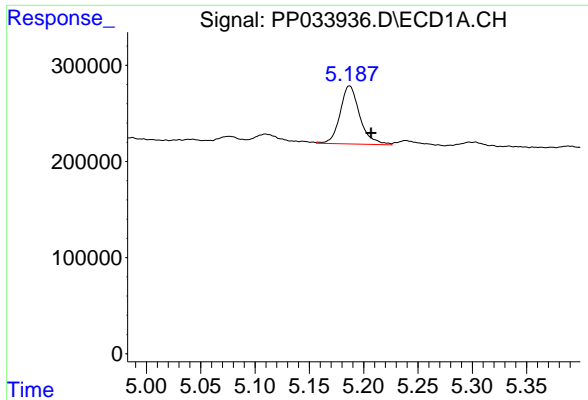
#8 AR-1221-1

R.T.: 5.110 min
 Delta R.T.: 0.000 min
 Response: 141440
 Conc: 153.27 ng/ml



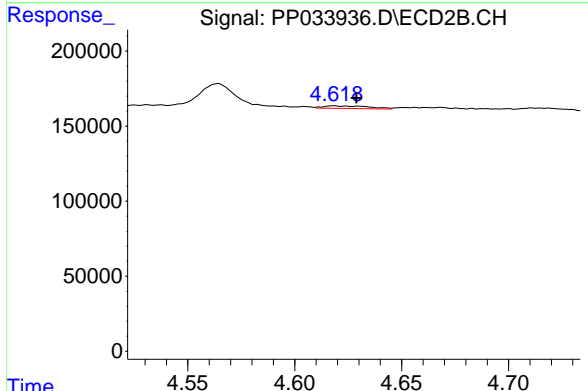
#8 AR-1221-1

R.T.: 0.000 min
 Exp R.T. : 4.529 min
 Response: 0
 Conc: N.D.

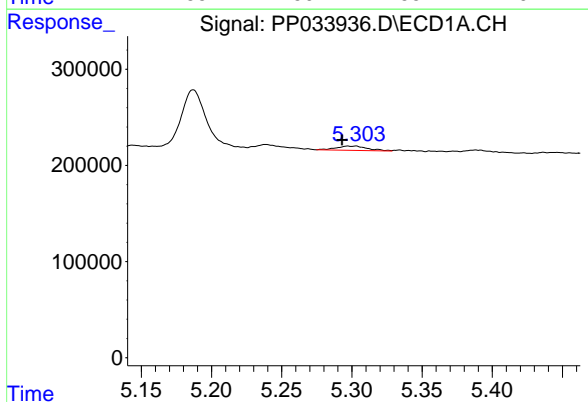


#9 AR-1221-2
 R.T.: 5.187 min
 Delta R.T.: -0.020 min
 Response: 757724
 Conc: 1078.34 ng/ml

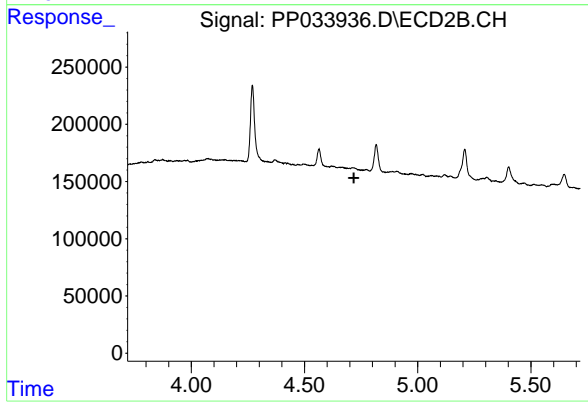
Instrument :
 ECD_P
 ClientSampleId :



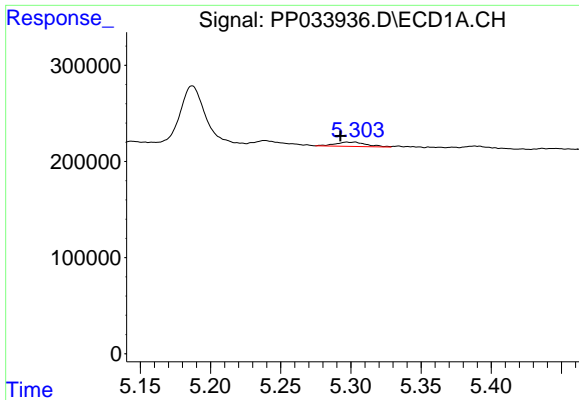
#9 AR-1221-2
 R.T.: 4.618 min
 Delta R.T.: -0.010 min
 Response: 25297
 Conc: 78.18 ng/ml



#10 AR-1221-3
 R.T.: 5.303 min
 Delta R.T.: 0.009 min
 Response: 71094
 Conc: 33.78 ng/ml

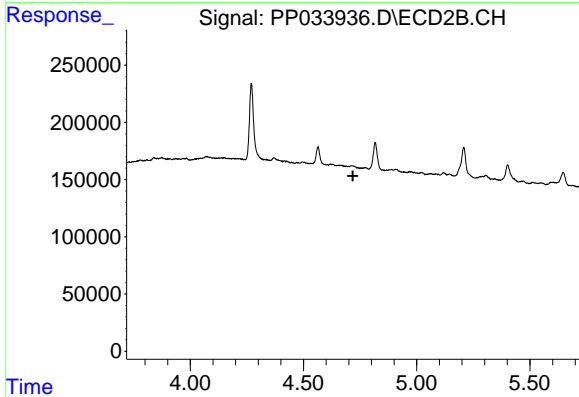


#10 AR-1221-3
 R.T.: 0.000 min
 Exp R.T. : 4.718 min
 Response: 0
 Conc: N.D.

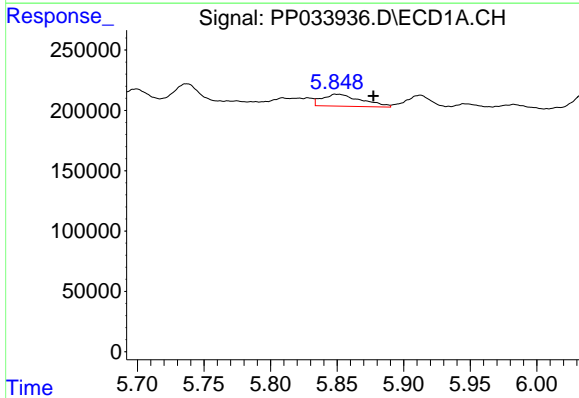


#11 AR-1232-1
 R.T.: 5.303 min
 Delta R.T.: 0.010 min
 Response: 71094
 Conc: 41.09 ng/ml

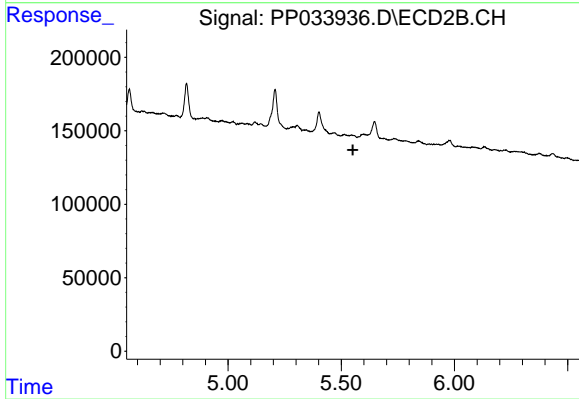
Instrument :
 ECD_P
 ClientSampleId :



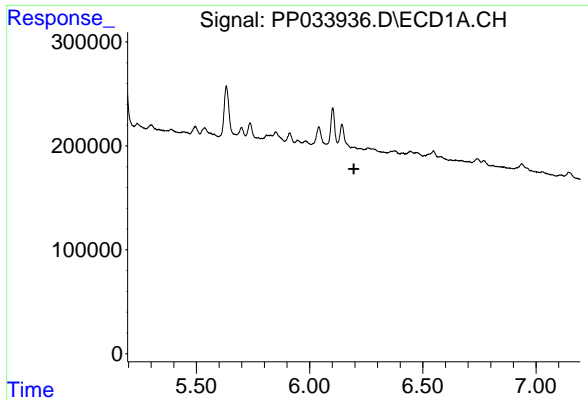
#11 AR-1232-1
 R.T.: 0.000 min
 Exp R.T. : 4.718 min
 Response: 0
 Conc: N.D.



#12 AR-1232-2
 R.T.: 5.850 min
 Delta R.T.: -0.028 min
 Response: 202356
 Conc: 220.95 ng/ml



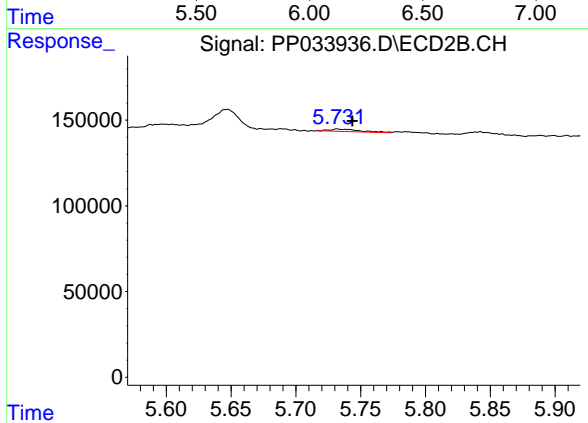
#12 AR-1232-2
 R.T.: 0.000 min
 Exp R.T. : 5.551 min
 Response: 0
 Conc: N.D.



#13 AR-1232-3

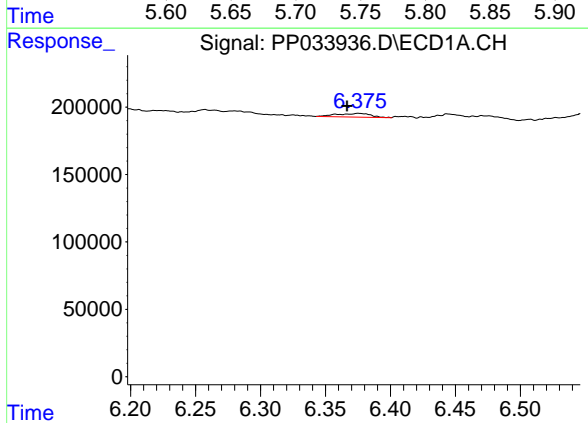
R.T.: 0.000 min
 Exp R.T.: 6.195 min
 Response: 0
 Conc: N.D.

Instrument :
 ECD_P
 ClientSampled :



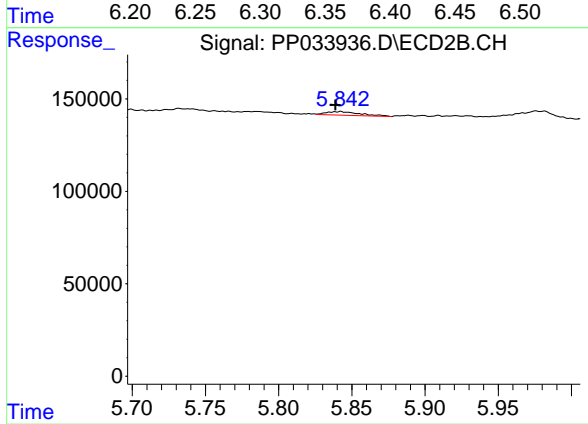
#13 AR-1232-3

R.T.: 5.732 min
 Delta R.T.: -0.012 min
 Response: 22601
 Conc: 58.77 ng/ml



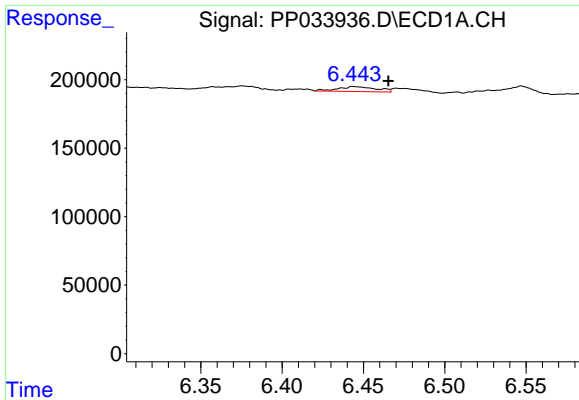
#14 AR-1232-4

R.T.: 6.375 min
 Delta R.T.: 0.009 min
 Response: 50065
 Conc: 58.61 ng/ml



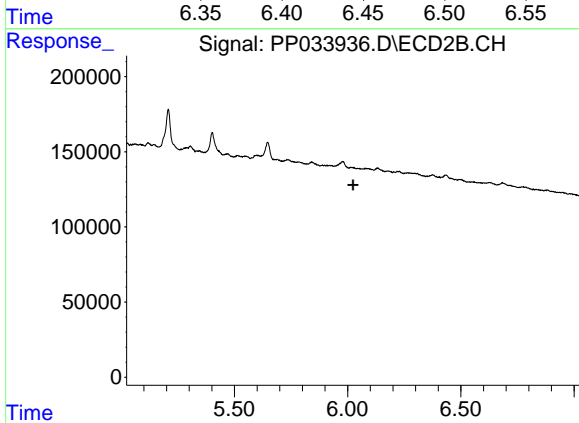
#14 AR-1232-4

R.T.: 5.842 min
 Delta R.T.: 0.003 min
 Response: 31479
 Conc: 94.38 ng/ml

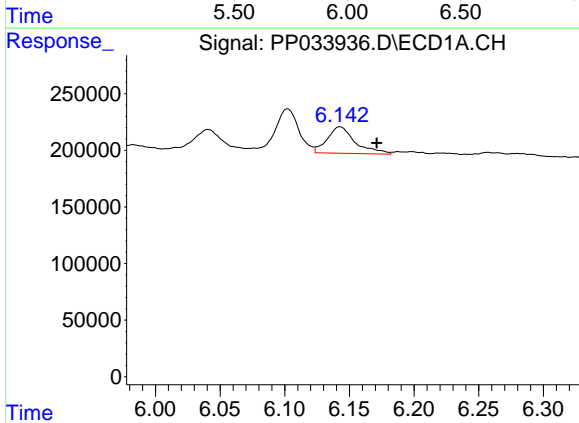


#15 AR-1232-5
 R.T.: 6.444 min
 Delta R.T.: -0.021 min
 Response: 58479
 Conc: 98.58 ng/ml

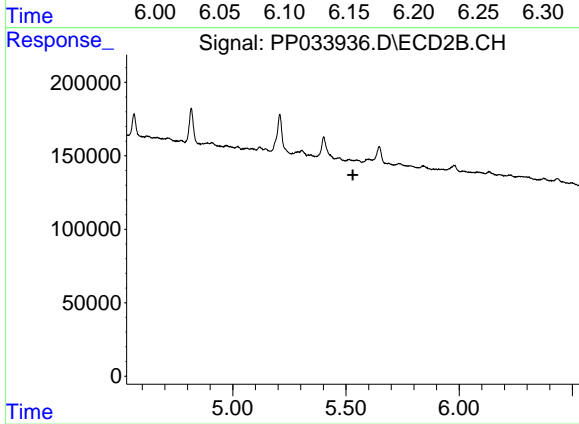
Instrument :
 ECD_P
 ClientSampleId :



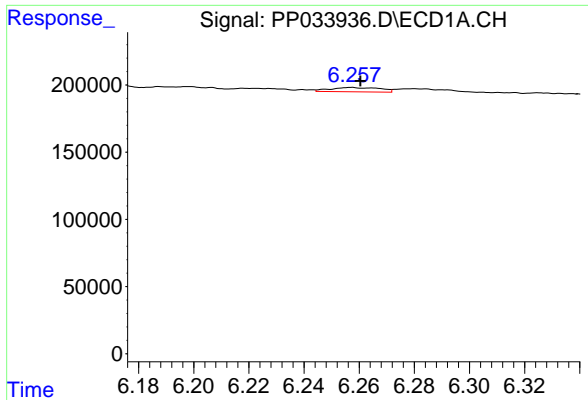
#15 AR-1232-5
 R.T.: 0.000 min
 Exp R.T. : 6.023 min
 Response: 0
 Conc: N.D.



#16 AR-1242-1
 R.T.: 6.143 min
 Delta R.T.: -0.028 min
 Response: 354669
 Conc: 174.80 ng/ml



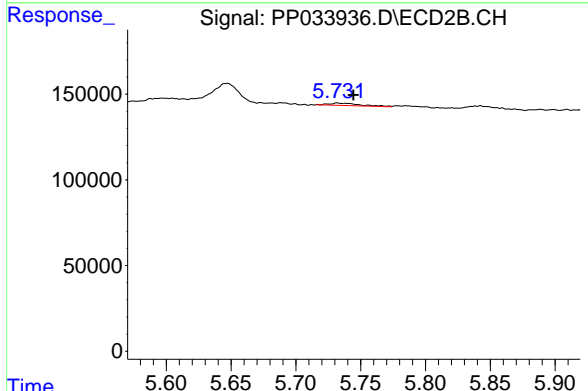
#16 AR-1242-1
 R.T.: 0.000 min
 Exp R.T. : 5.530 min
 Response: 0
 Conc: N.D.



#18 AR-1242-3

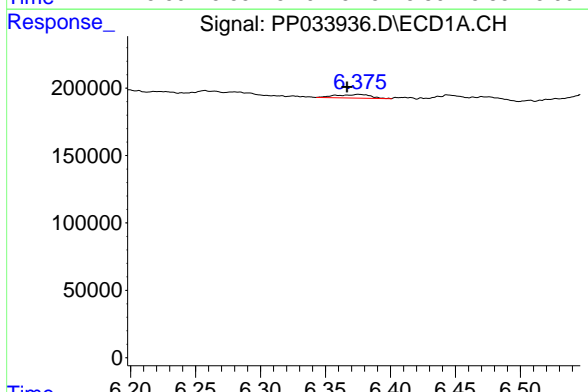
R.T.: 6.257 min
 Delta R.T.: -0.003 min
 Response: 41135
 Conc: 21.53 ng/ml

Instrument :
 ECD_P
 ClientSampleId :



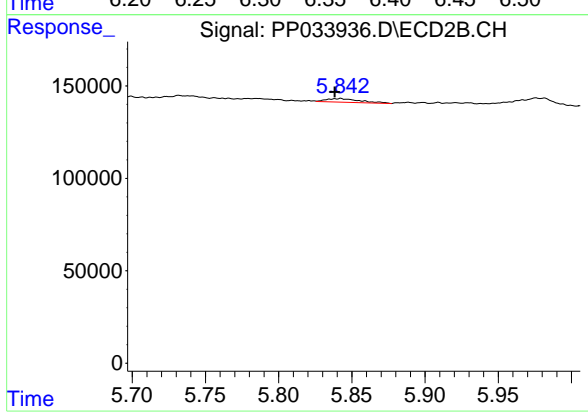
#18 AR-1242-3

R.T.: 5.732 min
 Delta R.T.: -0.012 min
 Response: 22601
 Conc: 32.01 ng/ml



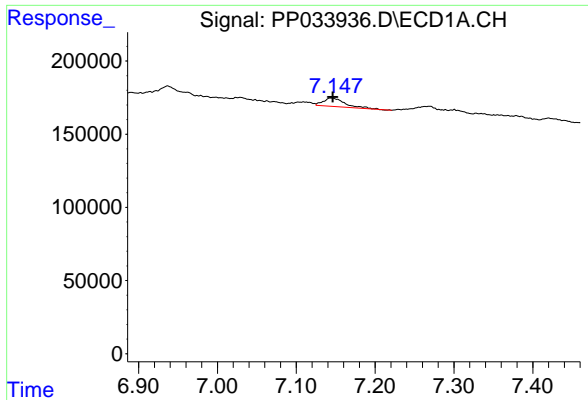
#19 AR-1242-4

R.T.: 6.375 min
 Delta R.T.: 0.009 min
 Response: 50065
 Conc: 32.19 ng/ml



#19 AR-1242-4

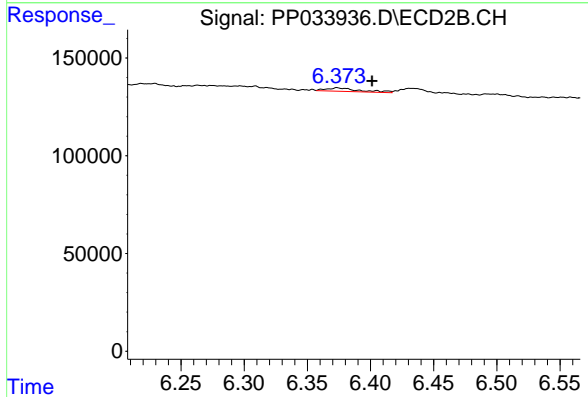
R.T.: 5.842 min
 Delta R.T.: 0.004 min
 Response: 31479
 Conc: 45.98 ng/ml



#20 AR-1242-5

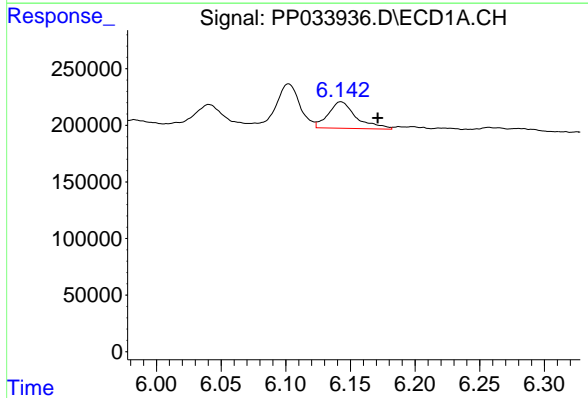
R.T.: 7.144 min
 Delta R.T.: -0.002 min
 Response: 108774
 Conc: 67.76 ng/ml

Instrument :
 ECD_P
 ClientSampled :



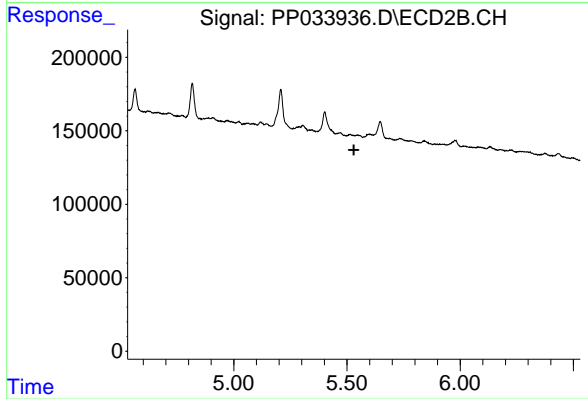
#20 AR-1242-5

R.T.: 6.374 min
 Delta R.T.: -0.028 min
 Response: 32437
 Conc: 40.58 ng/ml



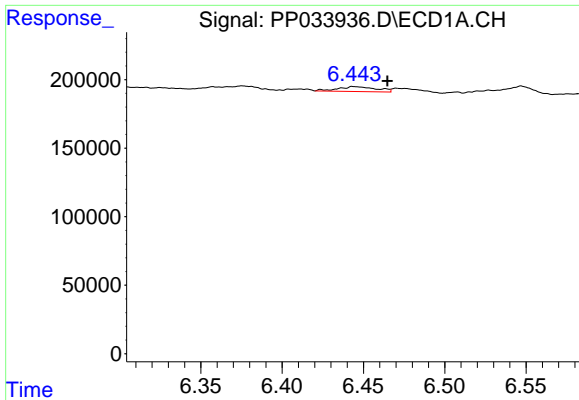
#21 AR-1248-1

R.T.: 6.143 min
 Delta R.T.: -0.028 min
 Response: 354669
 Conc: 227.36 ng/ml



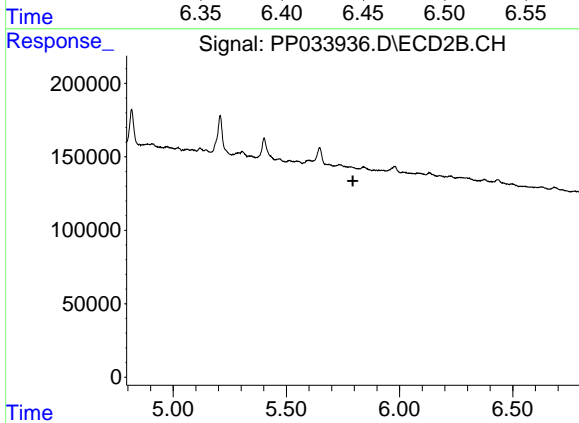
#21 AR-1248-1

R.T.: 0.000 min
 Exp R.T. : 5.531 min
 Response: 0
 Conc: N.D.

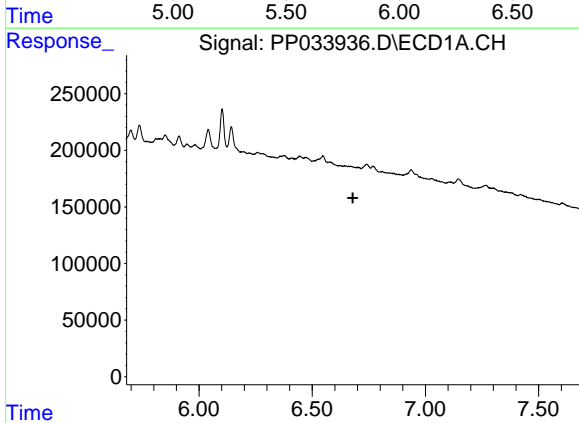


#22 AR-1248-2
 R.T.: 6.444 min
 Delta R.T.: -0.021 min
 Response: 58479
 Conc: 27.47 ng/ml

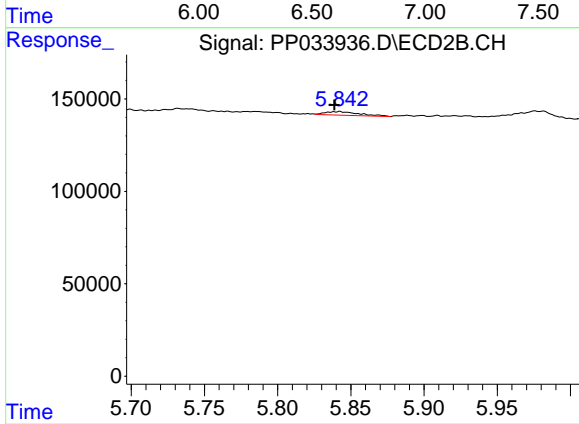
Instrument :
 ECD_P
 ClientSampled :



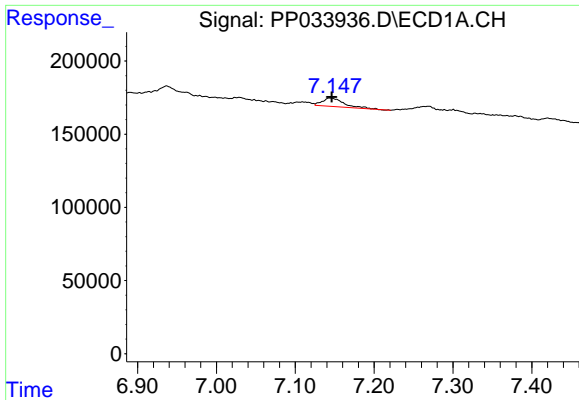
#22 AR-1248-2
 R.T.: 0.000 min
 Exp R.T. : 5.794 min
 Response: 0
 Conc: N.D.



#23 AR-1248-3
 R.T.: 0.000 min
 Exp R.T. : 6.680 min
 Response: 0
 Conc: N.D.



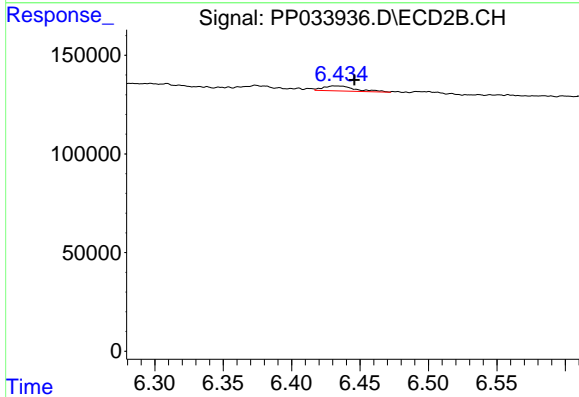
#23 AR-1248-3
 R.T.: 5.842 min
 Delta R.T.: 0.003 min
 Response: 31479
 Conc: 31.26 ng/ml



#25 AR-1248-5

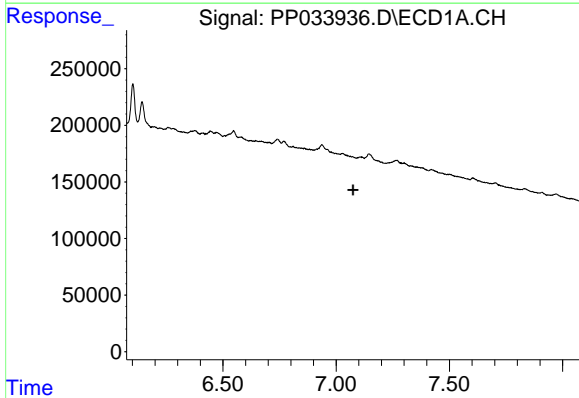
R.T.: 7.144 min
 Delta R.T.: -0.002 min
 Response: 108774
 Conc: 39.88 ng/ml

Instrument :
 ECD_P
 ClientSampleId :



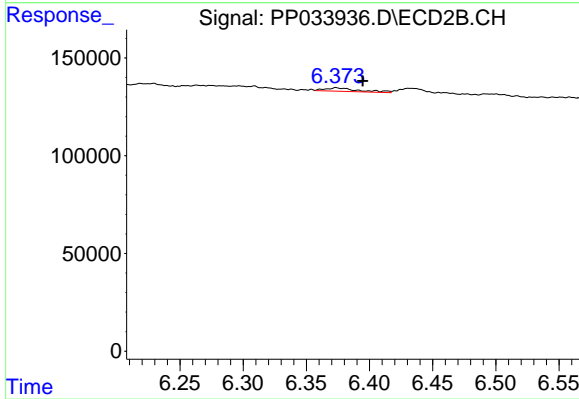
#25 AR-1248-5

R.T.: 6.432 min
 Delta R.T.: -0.014 min
 Response: 41971
 Conc: 38.97 ng/ml



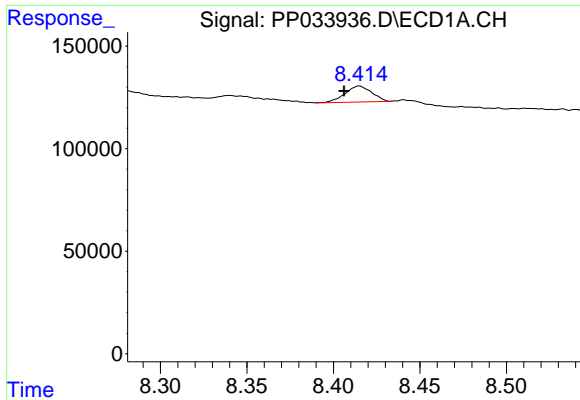
#26 AR-1254-1

R.T.: 0.000 min
 Exp R.T. : 7.074 min
 Response: 0
 Conc: N.D.



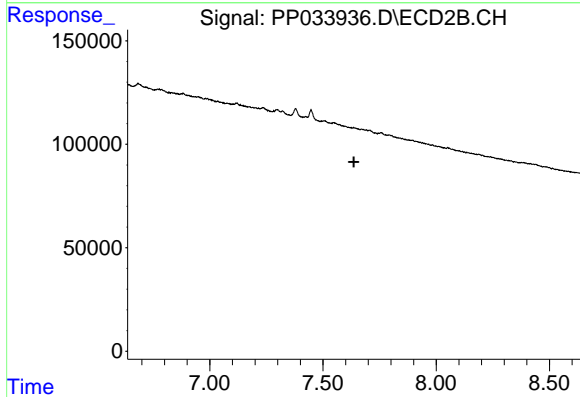
#26 AR-1254-1

R.T.: 6.374 min
 Delta R.T.: -0.021 min
 Response: 32437
 Conc: 19.90 ng/ml

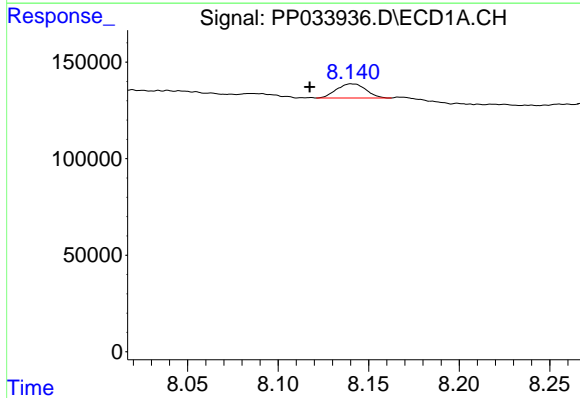


#30 AR-1254-5
 R.T.: 8.415 min
 Delta R.T.: 0.009 min
 Response: 82550
 Conc: 20.97 ng/ml

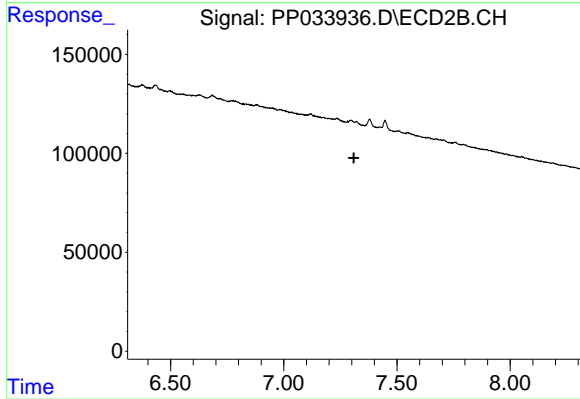
Instrument :
 ECD_P
 ClientSampled :



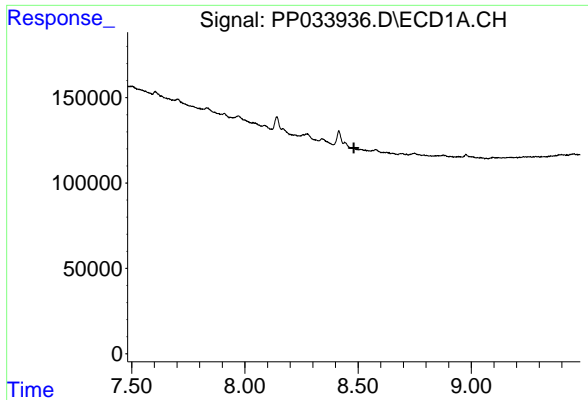
#30 AR-1254-5
 R.T.: 0.000 min
 Exp R.T. : 7.636 min
 Response: 0
 Conc: N.D.



#32 AR-1260-2
 R.T.: 8.141 min
 Delta R.T.: 0.023 min
 Response: 82877
 Conc: 20.13 ng/ml



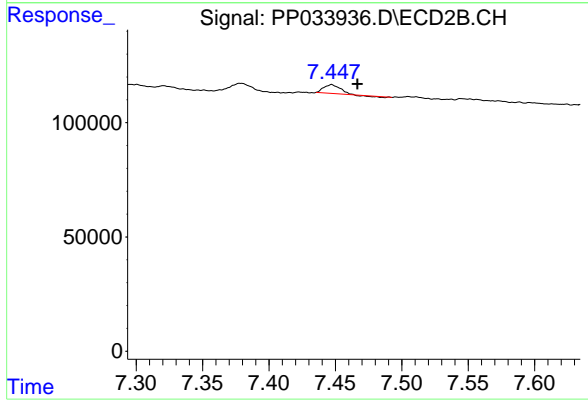
#32 AR-1260-2
 R.T.: 0.000 min
 Exp R.T. : 7.310 min
 Response: 0
 Conc: N.D.



#33 AR-1260-3

R.T.: 0.000 min
 Exp R.T. : 8.482 min
 Response: 0
 Conc: N.D.

Instrument :
 ECD_P
 ClientSampleId :



#33 AR-1260-3

R.T.: 7.447 min
 Delta R.T.: -0.019 min
 Response: 30621
 Conc: 18.08 ng/ml