

Data Path : Z:\pestpcbsrv\HPCHEM1\ECD\_P\Data\PP031221\  
 Data File : PP033956.D  
 Signal(s) : Signal #1: ECD1A.CH Signal #2: ECD2B.CH  
 Acq On : 13 Mar 2021 1:49  
 Operator : DD\AJ  
 Sample : M1649-02  
 Misc :  
 ALS Vial : 31 Sample Multiplier: 1

Instrument :  
 ECD\_P  
 ClientSampleId :

Integration File signal 1: autoint1.e  
 Integration File signal 2: autoint2.e  
 Quant Time: Mar 13 03:05:38 2021  
 Quant Method : Z:\pestpcbsrv\HPCHEM1\ECD\_P\methods\PP030921.M  
 Quant Title : GC EXTRACTABLES  
 QLast Update : Fri Mar 12 12:21:17 2021  
 Response via : Initial Calibration  
 Integrator: ChemStation 6890 Scale Mode: Small noise peaks clipped

Volume Inj. : 2 µl  
 Signal #1 Phase : ZB-MR2 Signal #2 Phase: ZB-MR2  
 Signal #1 Info : 30Mx0.32mmx 0.50µ Signal #2 Info : 30M x 0.32mm x 0.25µm

Compound	RT#1	RT#2	Resp#1	Resp#2	ng/ml	ng/ml
-----						
System Monitoring Compounds						
1) SA Tetrachlo...	4.855	4.266	2072277	1048048	23.950	25.798
2) SA Decachlor...	10.785	9.592	1932775	628356	22.886	23.547
Target Compounds						
6) L1 AR-1016-4	6.382f	5.804	99807	12545	48.962	17.373 #
8) L2 AR-1221-1	5.106	4.509f	195097	8769	211.420	20.594 #
9) L2 AR-1221-2	5.204	4.610f	239429	37785	340.738	116.773 #
14) L3 AR-1232-4	6.382f	0.000	99807	0	116.836	N.D. #
19) L4 AR-1242-4	6.382f	0.000	99807	0	64.170	N.D. #
20) L4 AR-1242-5	0.000	6.393	0	16146	N.D.	20.198 #
22) L5 AR-1248-2	0.000	5.804	0	12545	N.D.	13.371 #
26) L6 AR-1254-1	0.000	6.393	0	16146	N.D.	9.904 #
30) L6 AR-1254-5	8.413	0.000	82390	0	20.932	N.D. #
34) L7 AR-1260-4	8.686f	0.000	37753	0	10.192	N.D. #
39) L8 AR-1262-4	9.412	0.000	38909	0	7.850	N.D. #
42) L9 AR-1268-2	9.412	0.000	38909	0	3.850	N.D. #
-----						

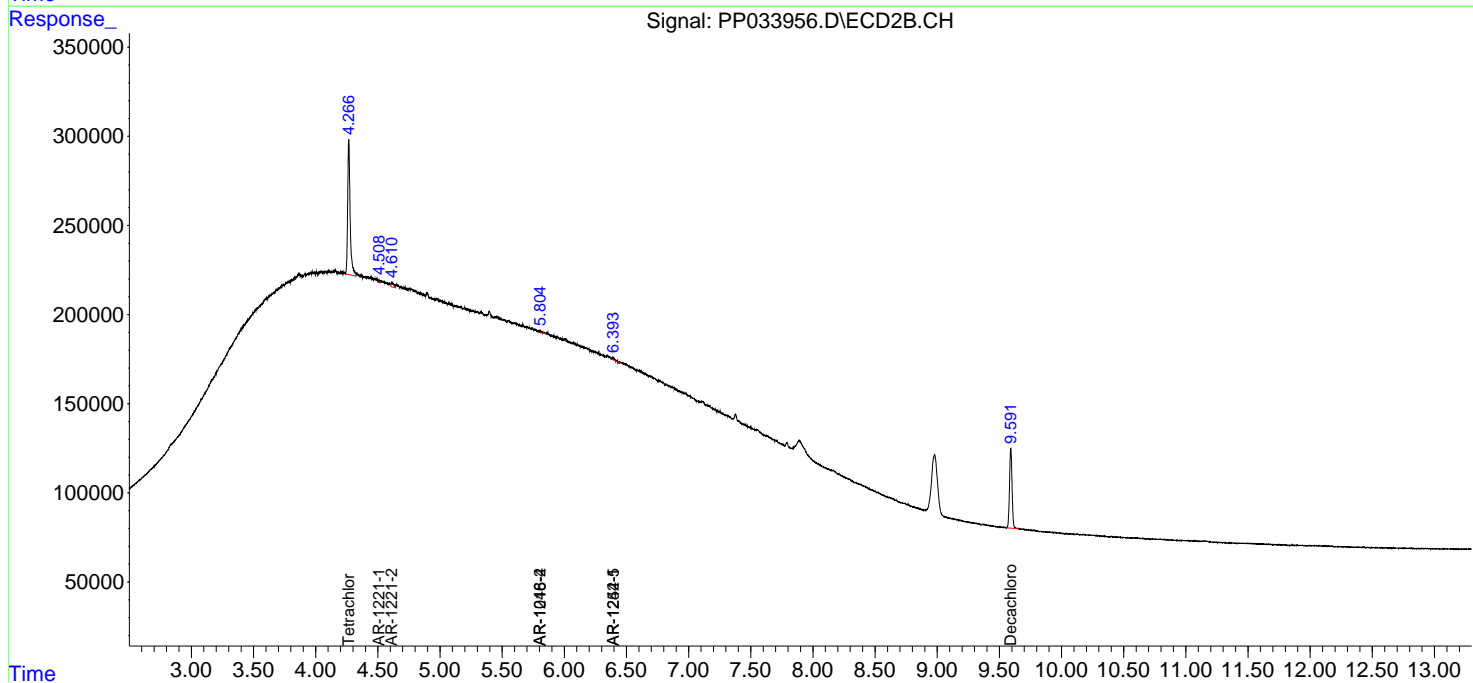
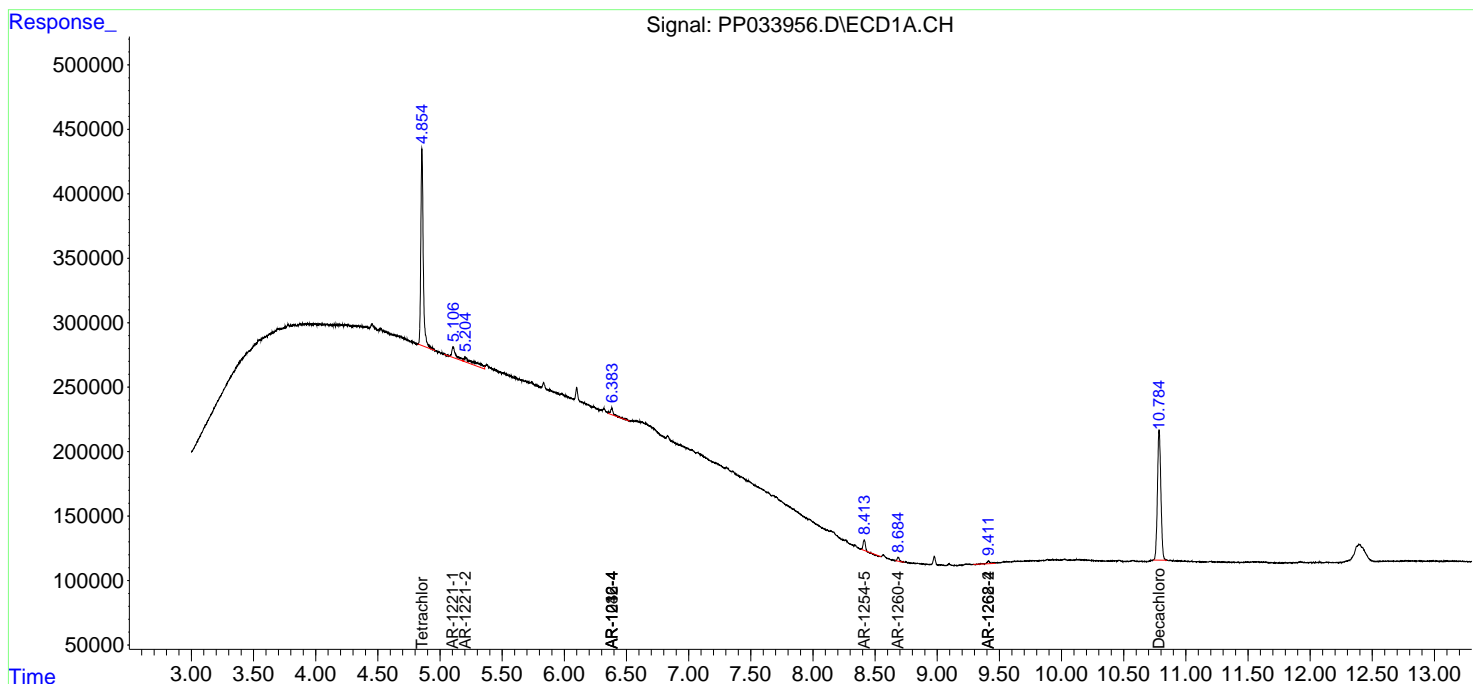
(f)=RT Delta > 1/2 Window (#)=Amounts differ by > 25% (m)=manual int.

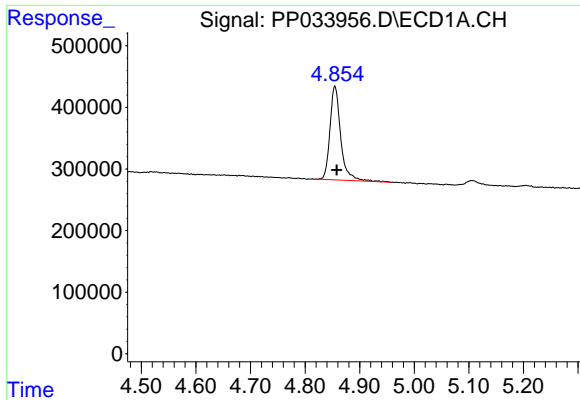
Data Path : Z:\pestpcbsrv\HPCHEM1\ECD\_P\Data\PP031221\  
 Data File : PP033956.D  
 Signal(s) : Signal #1: ECD1A.CH Signal #2: ECD2B.CH  
 Acq On : 13 Mar 2021 1:49  
 Operator : DD\AJ  
 Sample : M1649-02  
 Misc :  
 ALS Vial : 31 Sample Multiplier: 1

Instrument :  
 ECD\_P  
 ClientSampled :

Integration File signal 1: autoint1.e  
 Integration File signal 2: autoint2.e  
 Quant Time: Mar 13 03:05:38 2021  
 Quant Method : Z:\pestpcbsrv\HPCHEM1\ECD\_P\methods\PP030921.M  
 Quant Title : GC EXTRACTABLES  
 QLast Update : Fri Mar 12 12:21:17 2021  
 Response via : Initial Calibration  
 Integrator: ChemStation 6890 Scale Mode: Small noise peaks clipped

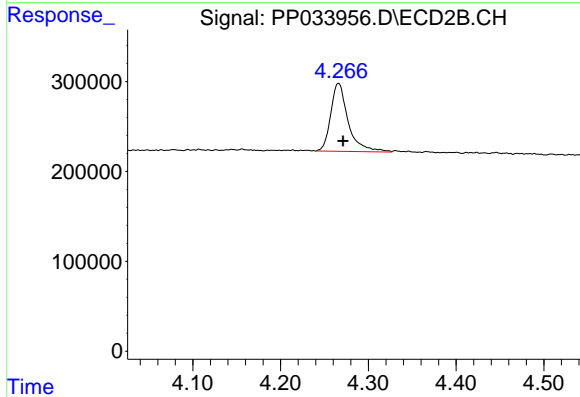
Volume Inj. : 2 µl  
 Signal #1 Phase : ZB-MR1 Signal #2 Phase: ZB-MR2  
 Signal #1 Info : 30Mx0.32mmx 0.50µ Signal #2 Info : 30M x 0.32mm x 0.25µm



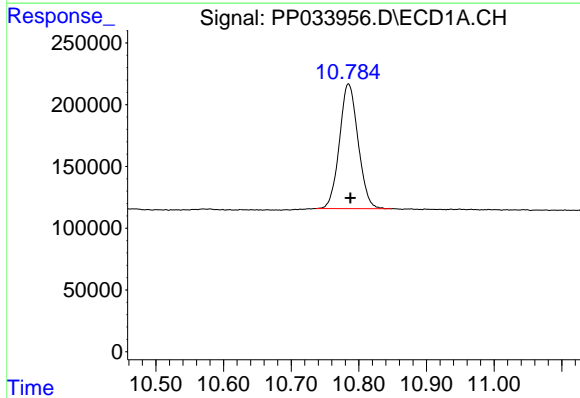


#1 Tetrachloro-m-xylene  
 R.T.: 4.855 min  
 Delta R.T.: -0.003 min  
 Response: 2072277  
 Conc: 23.95 ng/ml

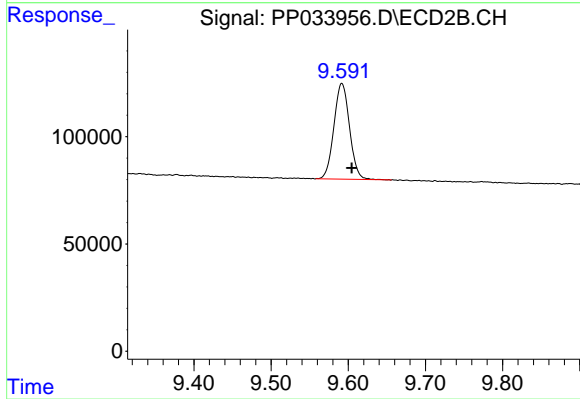
Instrument :  
 ECD\_P  
 ClientSampleId :



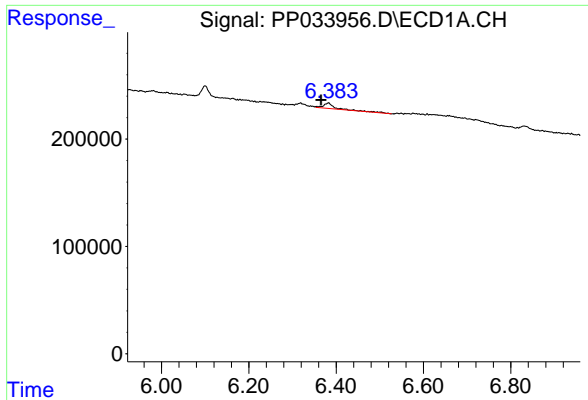
#1 Tetrachloro-m-xylene  
 R.T.: 4.266 min  
 Delta R.T.: -0.005 min  
 Response: 1048048  
 Conc: 25.80 ng/ml



#2 Decachlorobiphenyl  
 R.T.: 10.785 min  
 Delta R.T.: -0.003 min  
 Response: 1932775  
 Conc: 22.89 ng/ml



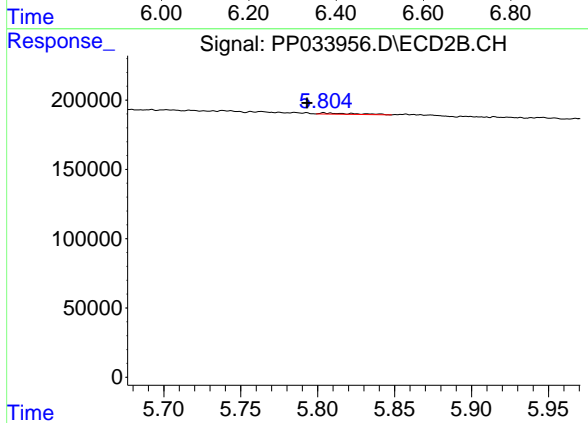
#2 Decachlorobiphenyl  
 R.T.: 9.592 min  
 Delta R.T.: -0.013 min  
 Response: 628356  
 Conc: 23.55 ng/ml



#6 AR-1016-4

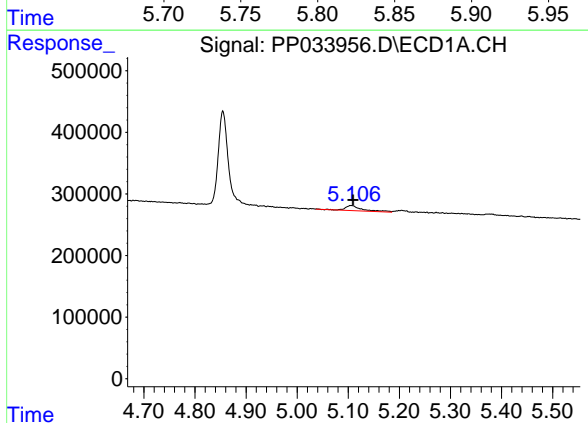
R.T.: 6.382 min  
 Delta R.T.: 0.016 min  
 Response: 99807  
 Conc: 48.96 ng/ml

Instrument :  
 ECD\_P  
 ClientSampleId :



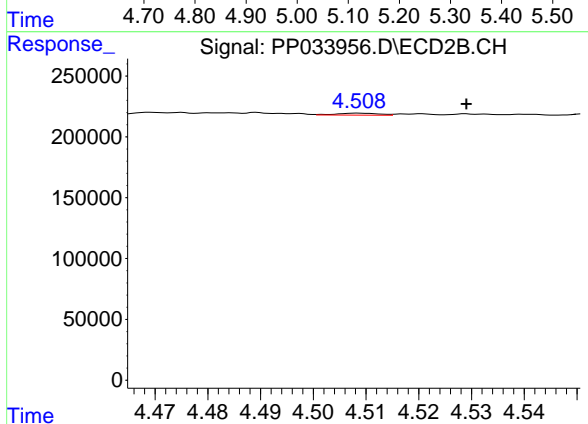
#6 AR-1016-4

R.T.: 5.804 min  
 Delta R.T.: 0.011 min  
 Response: 12545  
 Conc: 17.37 ng/ml



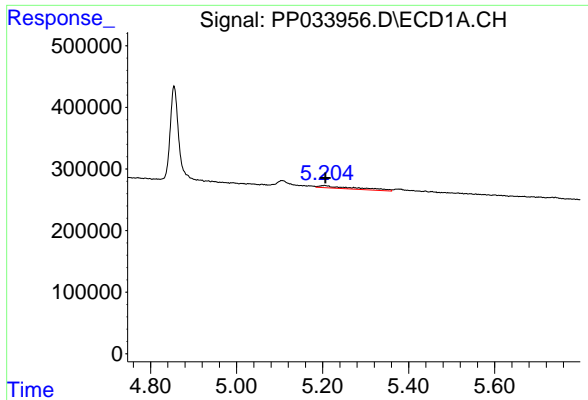
#8 AR-1221-1

R.T.: 5.106 min  
 Delta R.T.: -0.003 min  
 Response: 195097  
 Conc: 211.42 ng/ml



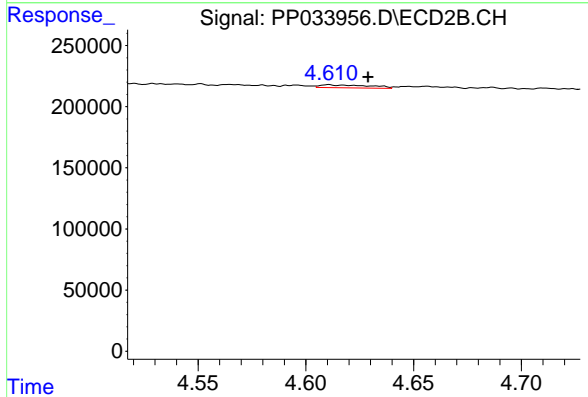
#8 AR-1221-1

R.T.: 4.509 min  
 Delta R.T.: -0.020 min  
 Response: 8769  
 Conc: 20.59 ng/ml

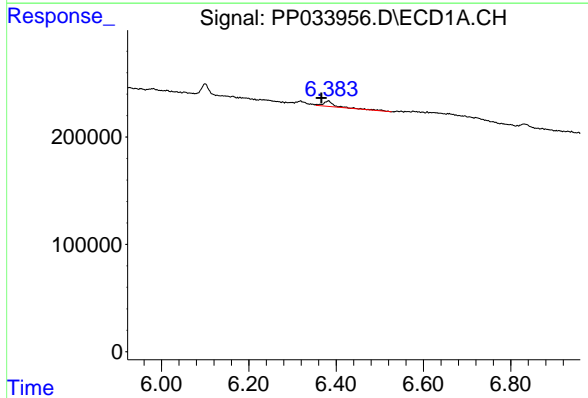


#9 AR-1221-2  
 R.T.: 5.204 min  
 Delta R.T.: -0.003 min  
 Response: 239429  
 Conc: 340.74 ng/ml

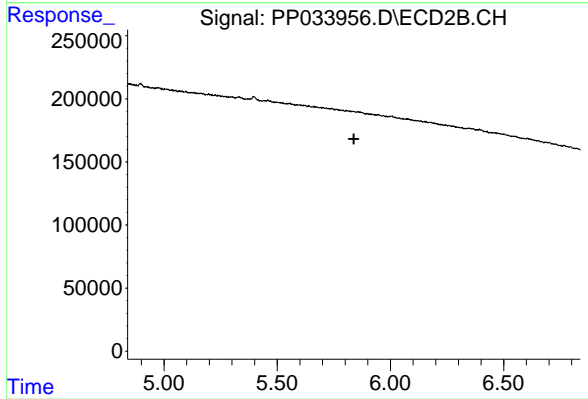
Instrument :  
 ECD\_P  
 ClientSampleId :



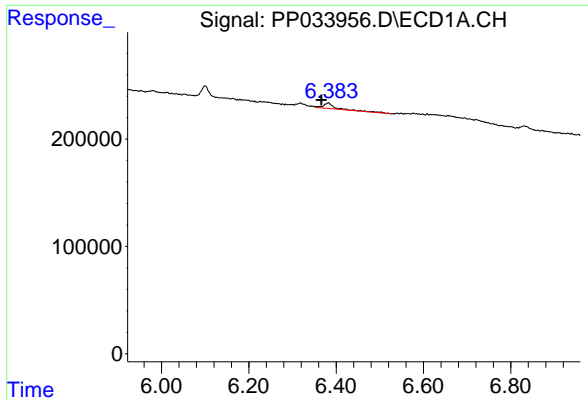
#9 AR-1221-2  
 R.T.: 4.610 min  
 Delta R.T.: -0.018 min  
 Response: 37785  
 Conc: 116.77 ng/ml



#14 AR-1232-4  
 R.T.: 6.382 min  
 Delta R.T.: 0.015 min  
 Response: 99807  
 Conc: 116.84 ng/ml

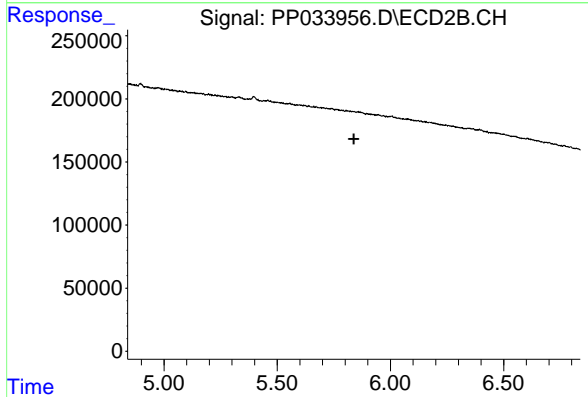


#14 AR-1232-4  
 R.T.: 0.000 min  
 Exp R.T. : 5.839 min  
 Response: 0  
 Conc: N.D.

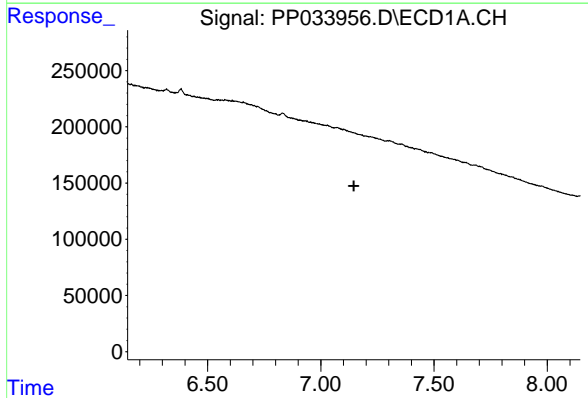


#19 AR-1242-4  
 R.T.: 6.382 min  
 Delta R.T.: 0.015 min  
 Response: 99807  
 Conc: 64.17 ng/ml

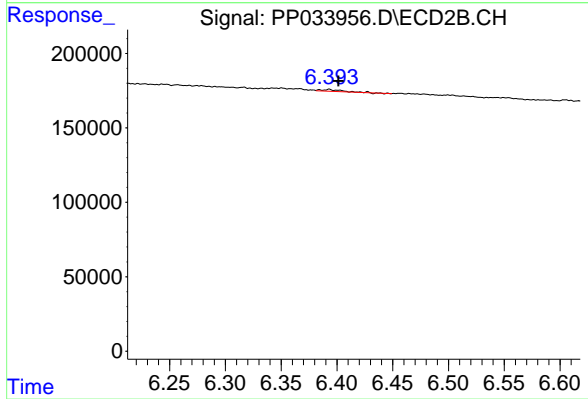
Instrument :  
 ECD\_P  
 ClientSampled :



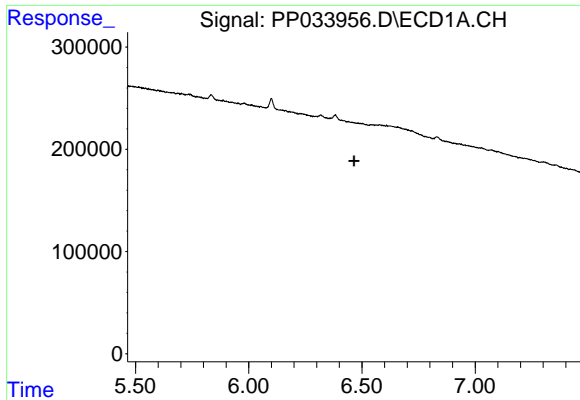
#19 AR-1242-4  
 R.T.: 0.000 min  
 Exp R.T. : 5.838 min  
 Response: 0  
 Conc: N.D.



#20 AR-1242-5  
 R.T.: 0.000 min  
 Exp R.T. : 7.146 min  
 Response: 0  
 Conc: N.D.



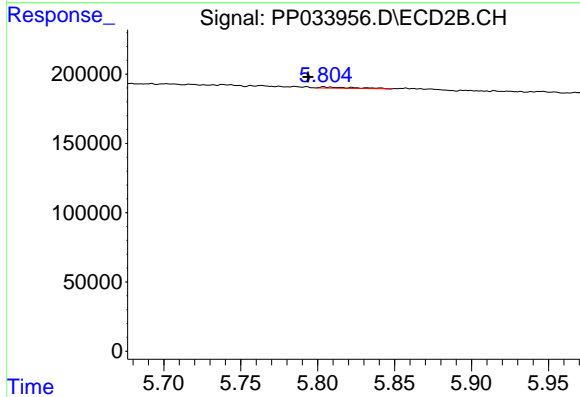
#20 AR-1242-5  
 R.T.: 6.393 min  
 Delta R.T.: -0.008 min  
 Response: 16146  
 Conc: 20.20 ng/ml



#22 AR-1248-2

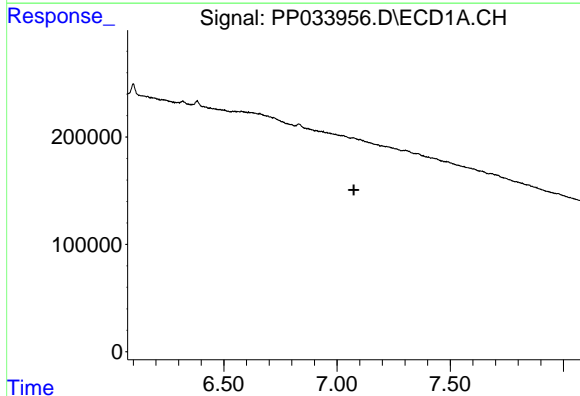
R.T.: 0.000 min  
 Exp R.T. : 6.465 min  
 Response: 0  
 Conc: N.D.

Instrument :  
 ECD\_P  
 ClientSampled :



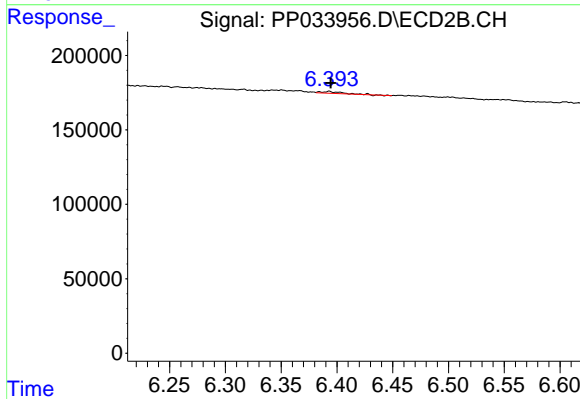
#22 AR-1248-2

R.T.: 5.804 min  
 Delta R.T.: 0.010 min  
 Response: 12545  
 Conc: 13.37 ng/ml



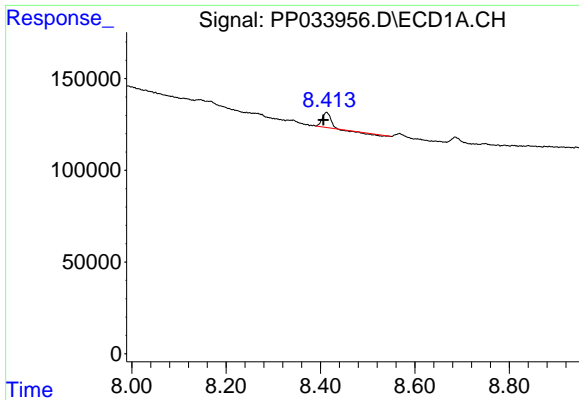
#26 AR-1254-1

R.T.: 0.000 min  
 Exp R.T. : 7.074 min  
 Response: 0  
 Conc: N.D.



#26 AR-1254-1

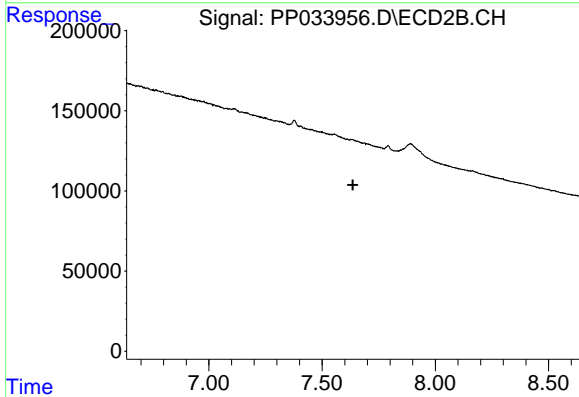
R.T.: 6.393 min  
 Delta R.T.: -0.001 min  
 Response: 16146  
 Conc: 9.90 ng/ml



#30 AR-1254-5

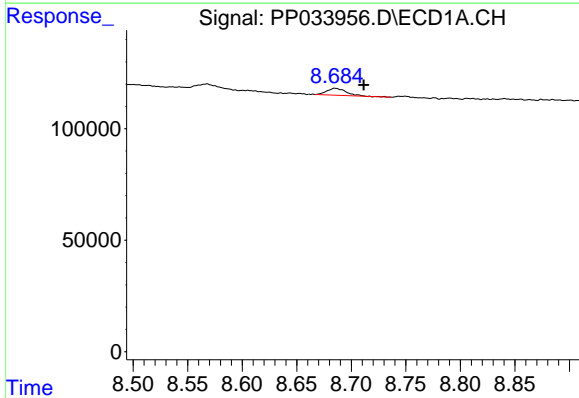
R.T.: 8.413 min  
 Delta R.T.: 0.007 min  
 Response: 82390  
 Conc: 20.93 ng/ml

Instrument :  
 ECD\_P  
 ClientSampled :



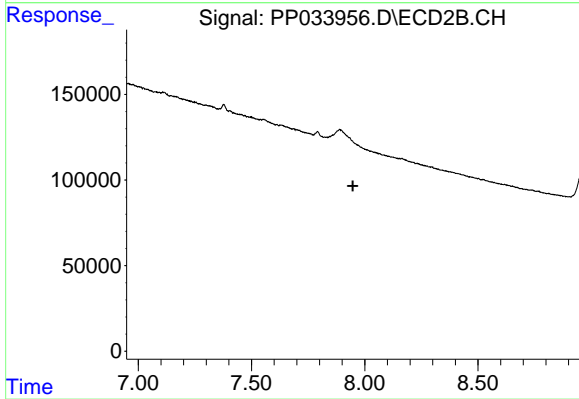
#30 AR-1254-5

R.T.: 0.000 min  
 Exp R.T. : 7.636 min  
 Response: 0  
 Conc: N.D.



#34 AR-1260-4

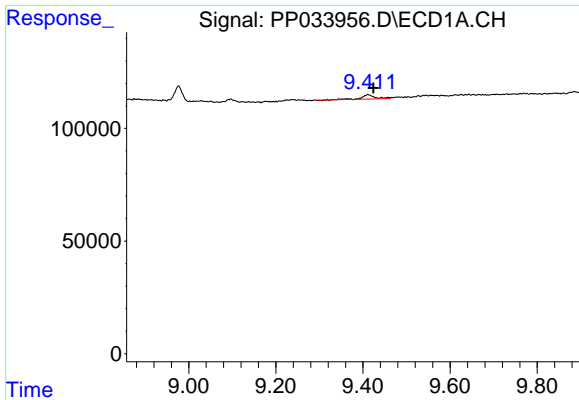
R.T.: 8.686 min  
 Delta R.T.: -0.026 min  
 Response: 37753  
 Conc: 10.19 ng/ml



#34 AR-1260-4

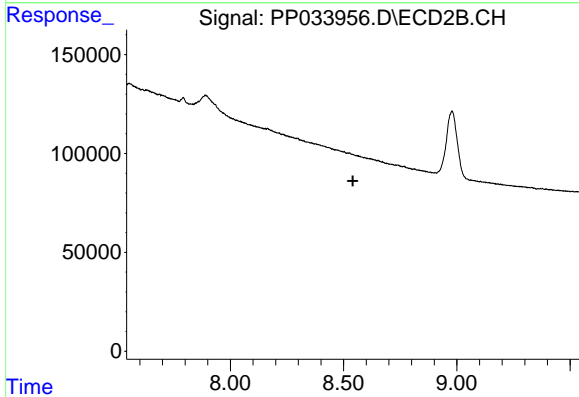
R.T.: 0.000 min  
 Exp R.T. : 7.948 min  
 Response: 0  
 Conc: N.D.



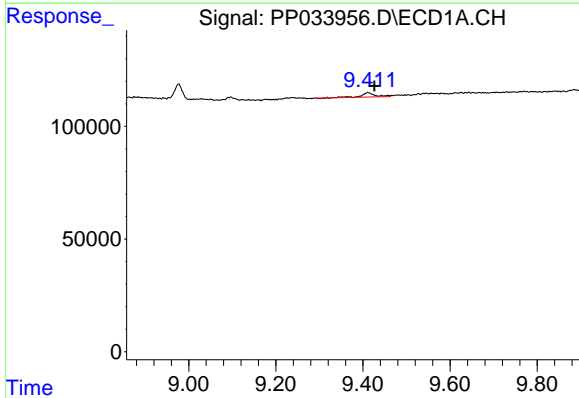


#39 AR-1262-4  
 R.T.: 9.412 min  
 Delta R.T.: -0.012 min  
 Response: 38909  
 Conc: 7.85 ng/ml

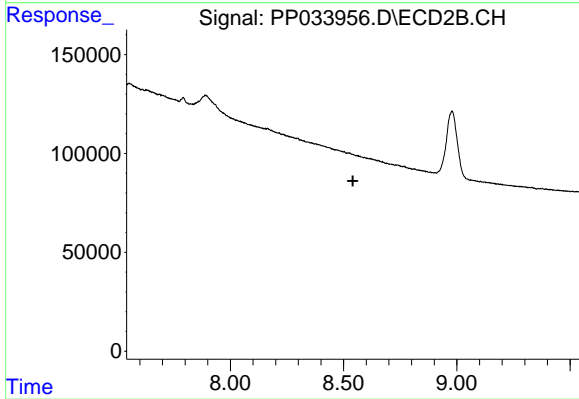
Instrument :  
 ECD\_P  
 ClientSampleId :



#39 AR-1262-4  
 R.T.: 0.000 min  
 Exp R.T. : 8.541 min  
 Response: 0  
 Conc: N.D.



#42 AR-1268-2  
 R.T.: 9.412 min  
 Delta R.T.: -0.014 min  
 Response: 38909  
 Conc: 3.85 ng/ml



#42 AR-1268-2  
 R.T.: 0.000 min  
 Exp R.T. : 8.541 min  
 Response: 0  
 Conc: N.D.