

Data Path : Z:\pestpcbsrv\HPCHEM1\ECD_P\Data\PP031221\
 Data File : PP033984.D
 Signal(s) : Signal #1: ECD1A.CH Signal #2: ECD2B.CH
 Acq On : 13 Mar 2021 11:21
 Operator : DD\AJ
 Sample : AR1254CCC500
 Misc :
 ALS Vial : 4 Sample Multiplier: 1

Instrument :
 ECD_P
ClientSampleId :
 AR1254CCC500

Manual Integrations
APPROVED

Ankita
 3/15/2021 1:05:42 PM

Integration File signal 1: autoint1.e
 Integration File signal 2: autoint2.e
 Quant Time: Mar 15 07:43:20 2021
 Quant Method : Z:\pestpcbsrv\HPCHEM1\ECD_P\methods\PP030921.M
 Quant Title : GC EXTRACTABLES
 QLast Update : Fri Mar 12 12:21:17 2021
 Response via : Initial Calibration
 Integrator: ChemStation 6890 Scale Mode: Small noise peaks clipped

Volume Inj. : 2 µl
 Signal #1 Phase : ZB-MR1 Signal #2 Phase: ZB-MR2
 Signal #1 Info : 30Mx0.32mmx 0.50µ Signal #2 Info : 30M x 0.32mm x 0.25µm

Compound	RT#1	RT#2	Resp#1	Resp#2	ng/ml	ng/ml

System Monitoring Compounds						
1) SA Tetrachlo...	4.853	4.265	4792900	2379133	55.393	58.562
2) SA Decachlor...	10.781	9.588	4595652	1483975	54.416	55.610
Target Compounds						
26) L6 AR-1254-1	7.073	6.392	1697716	967279	581.152	593.306m
27) L6 AR-1254-2	7.301	6.549	2439242	836666	536.438m	585.814m
28) L6 AR-1254-3	7.681	6.970	2727228	1341929	551.597m	586.300m
29) L6 AR-1254-4	7.977	7.206	1923164	722139	560.683	568.155m
30) L6 AR-1254-5	8.404	7.634	2068622	1112203	525.544	590.492

(f)=RT Delta > 1/2 Window (#)=Amounts differ by > 25% (m)=manual int.

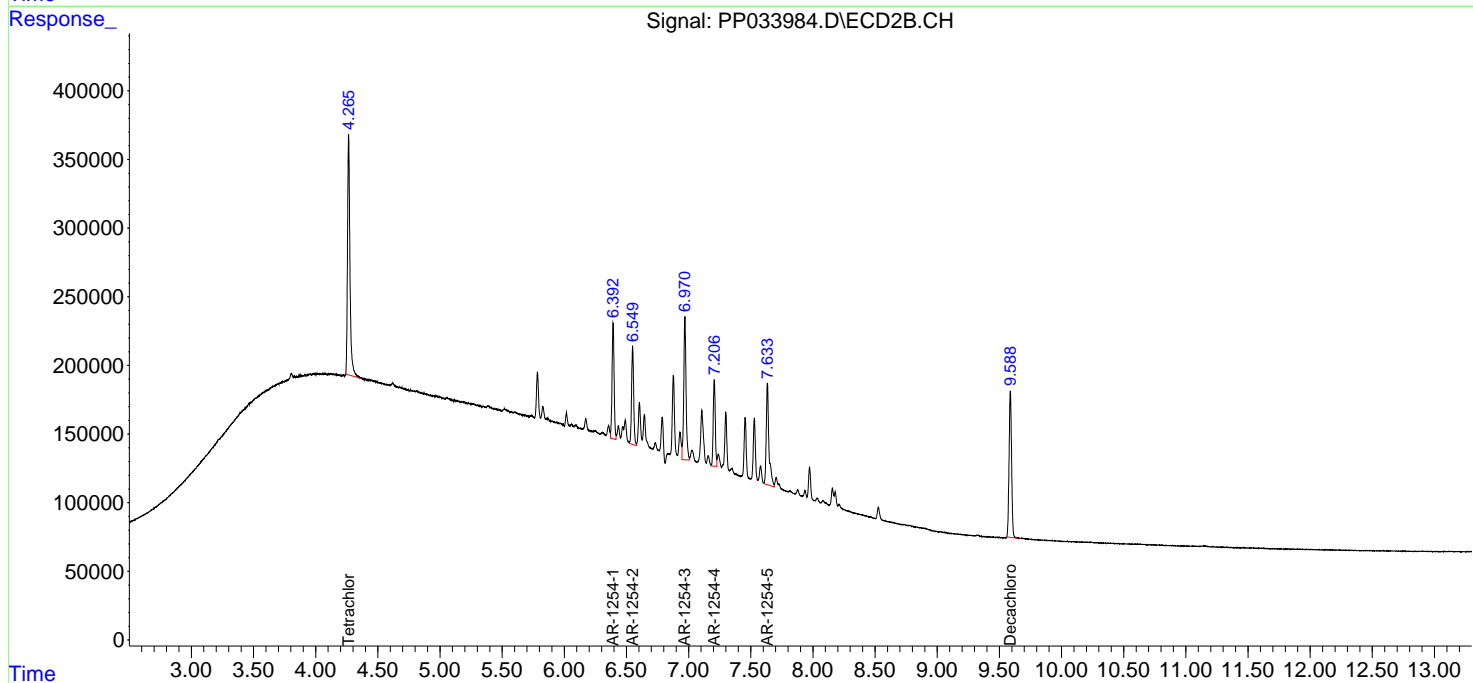
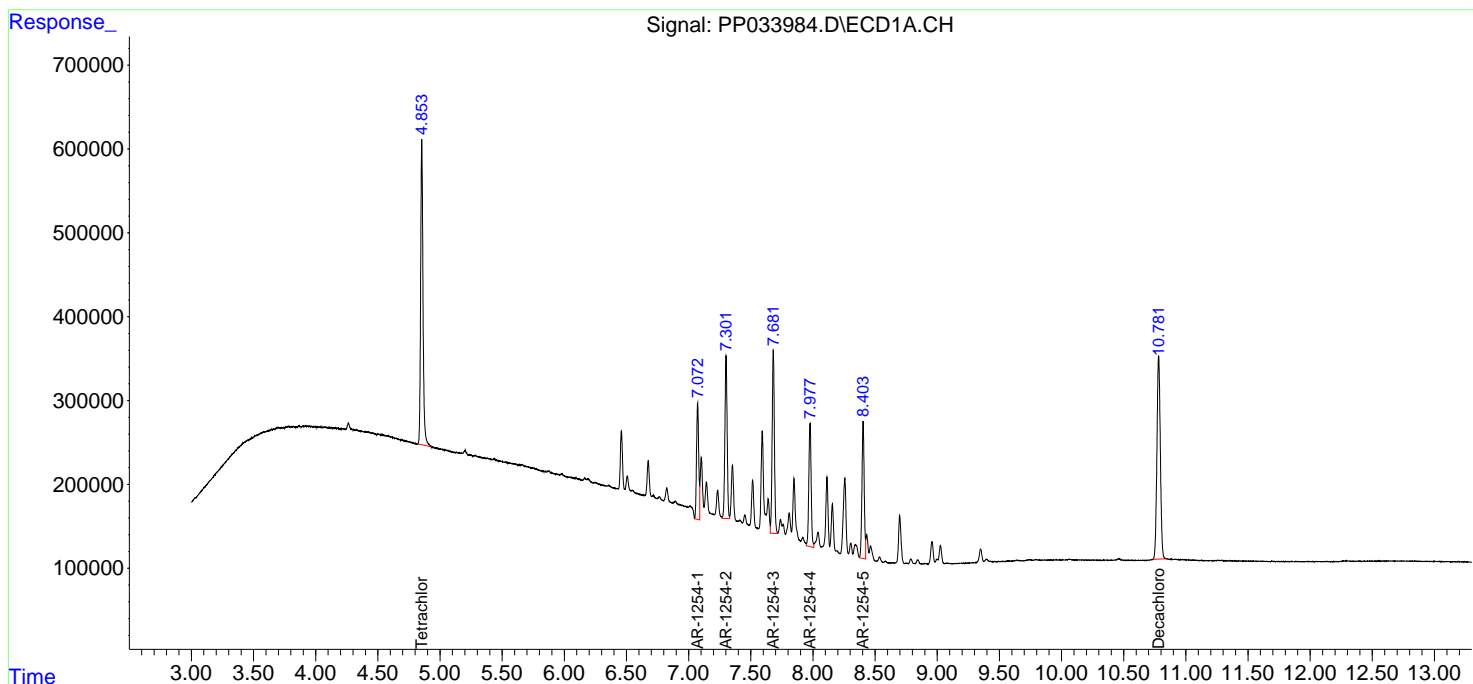
Data Path : Z:\pestpcbsrv\HPCHEM1\ECD_P\Data\PP031221\
 Data File : PP033984.D
 Signal(s) : Signal #1: ECD1A.CH Signal #2: ECD2B.CH
 Acq On : 13 Mar 2021 11:21
 Operator : DD\AJ
 Sample : AR1254CCC500
 Misc :
 ALS Vial : 4 Sample Multiplier: 1

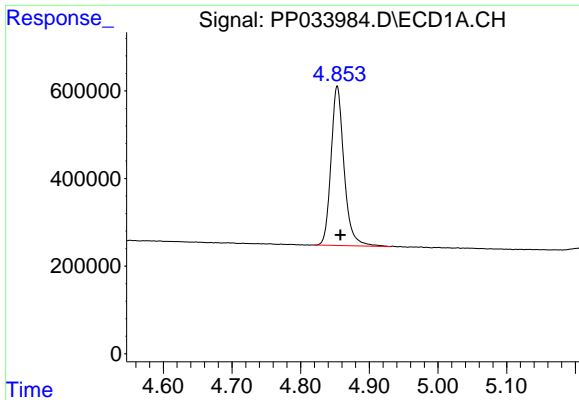
Instrument :
 ECD_P
Client Sampled :
 AR1254CCC500

Manual Integrations
APPROVED
 Ankita
 3/15/2021 1:05:42 PM

Integration File signal 1: autoint1.e
 Integration File signal 2: autoint2.e
 Quant Time: Mar 15 07:43:20 2021
 Quant Method : Z:\pestpcbsrv\HPCHEM1\ECD_P\methods\PP030921.M
 Quant Title : GC EXTRACTABLES
 QLast Update : Fri Mar 12 12:21:17 2021
 Response via : Initial Calibration
 Integrator: ChemStation 6890 Scale Mode: Small noise peaks clipped

Volume Inj. : 2 µl
 Signal #1 Phase : ZB-MR1 Signal #2 Phase: ZB-MR2
 Signal #1 Info : 30Mx0.32mmx 0.50µ Signal #2 Info : 30M x 0.32mm x 0.25µm



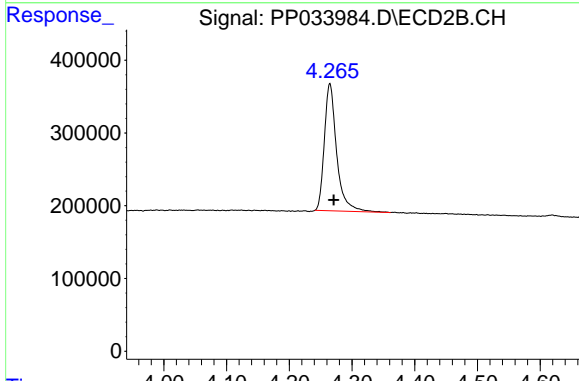


#1 Tetrachloro-m-xylene

R.T.: 4.853 min
 Delta R.T.: -0.005 min
 Response: 4792900
 Conc: 55.39 ng/ml

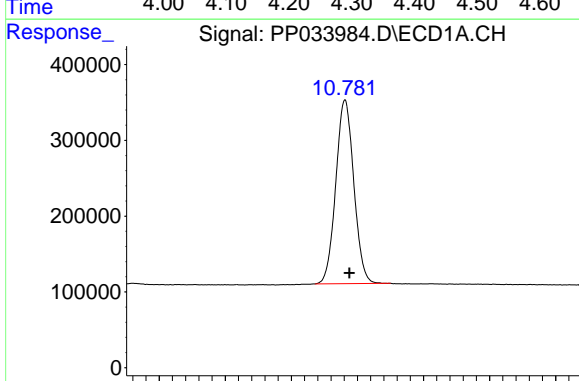
Instrument :
 ECD_P
 ClientSampleId :
 AR1254CCC500

Manual Integrations
 APPROVED
 Ankita
 3/15/2021 1:05:42 PM



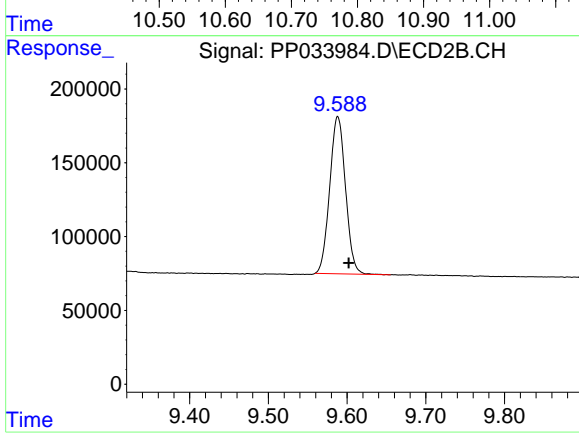
#1 Tetrachloro-m-xylene

R.T.: 4.265 min
 Delta R.T.: -0.006 min
 Response: 2379133
 Conc: 58.56 ng/ml



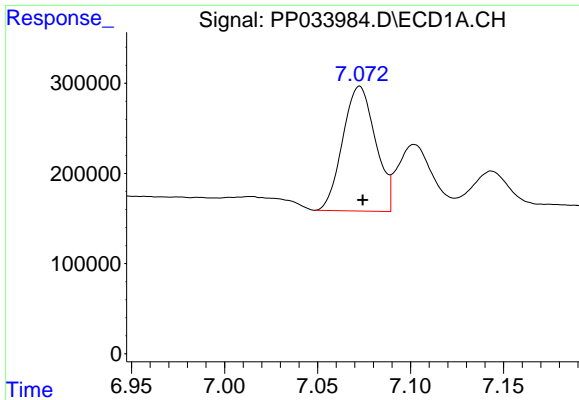
#2 Decachlorobiphenyl

R.T.: 10.781 min
 Delta R.T.: -0.007 min
 Response: 4595652
 Conc: 54.42 ng/ml



#2 Decachlorobiphenyl

R.T.: 9.588 min
 Delta R.T.: -0.014 min
 Response: 1483975
 Conc: 55.61 ng/ml

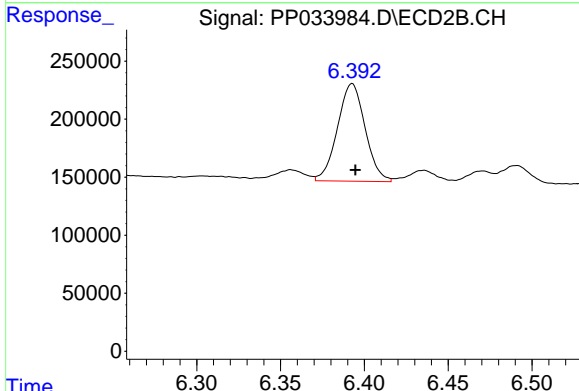


#26 AR-1254-1

R.T.: 7.073 min
 Delta R.T.: -0.002 min
 Response: 1697716
 Conc: 581.15 ng/ml

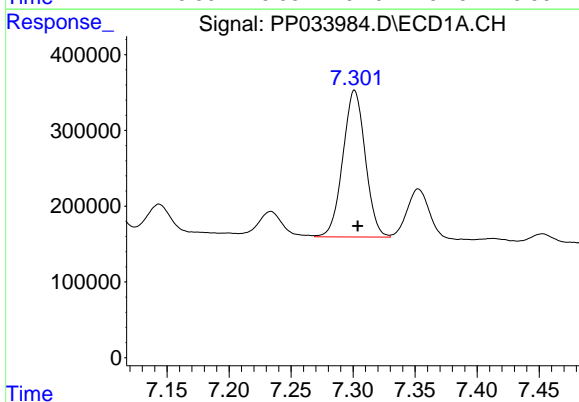
Instrument :
 ECD_P
ClientSampleId :
 AR1254CCC500

Manual Integrations
APPROVED
 Ankita
 3/15/2021 1:05:42 PM



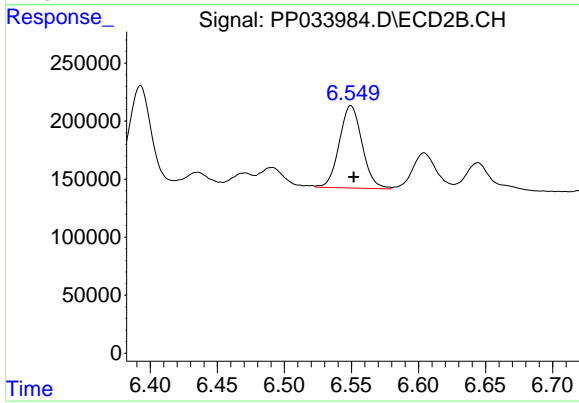
#26 AR-1254-1

R.T.: 6.392 min
 Delta R.T.: -0.002 min
 Response: 967279
 Conc: 593.31 ng/ml m



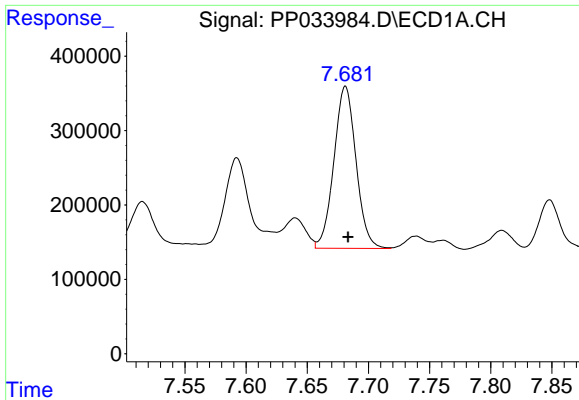
#27 AR-1254-2

R.T.: 7.301 min
 Delta R.T.: -0.003 min
 Response: 2439242
 Conc: 536.44 ng/ml m



#27 AR-1254-2

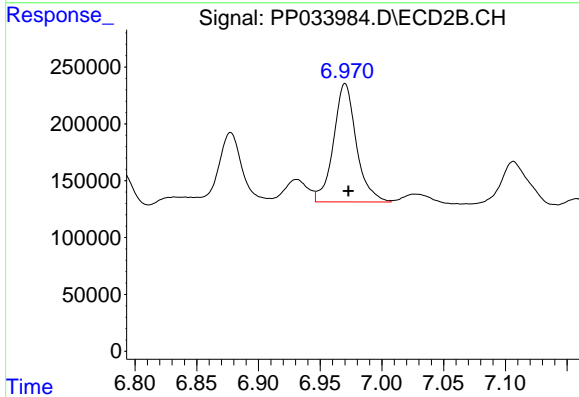
R.T.: 6.549 min
 Delta R.T.: -0.002 min
 Response: 836666
 Conc: 585.81 ng/ml m



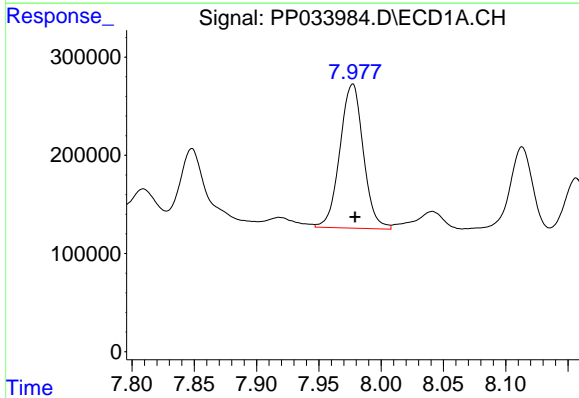
#28 AR-1254-3
 R.T.: 7.681 min
 Delta R.T.: -0.003 min
 Response: 2727228
 Conc: 551.60 ng/ml m

Instrument :
 ECD_P
ClientSampled :
 AR1254CCC500

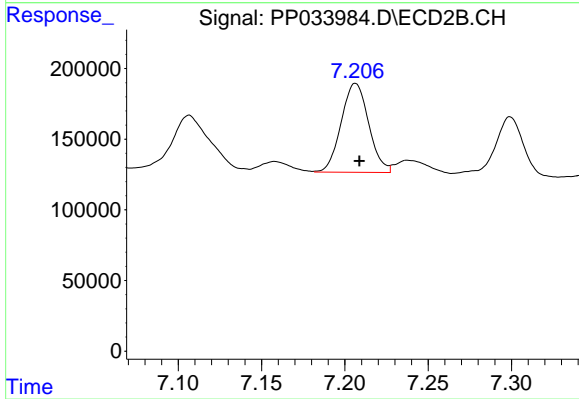
Manual Integrations
APPROVED
 Ankita
 3/15/2021 1:05:42 PM



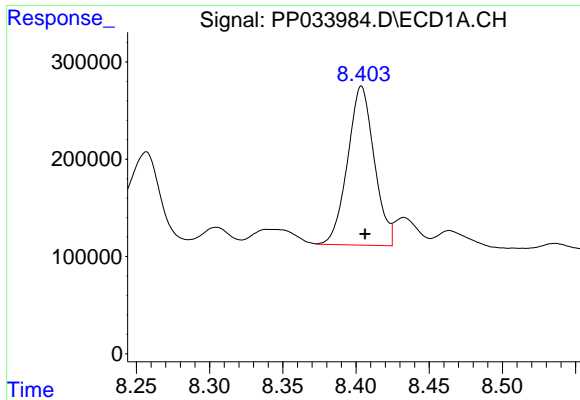
#28 AR-1254-3
 R.T.: 6.970 min
 Delta R.T.: -0.003 min
 Response: 1341929
 Conc: 586.30 ng/ml m



#29 AR-1254-4
 R.T.: 7.977 min
 Delta R.T.: -0.002 min
 Response: 1923164
 Conc: 560.68 ng/ml



#29 AR-1254-4
 R.T.: 7.206 min
 Delta R.T.: -0.003 min
 Response: 722139
 Conc: 568.15 ng/ml m



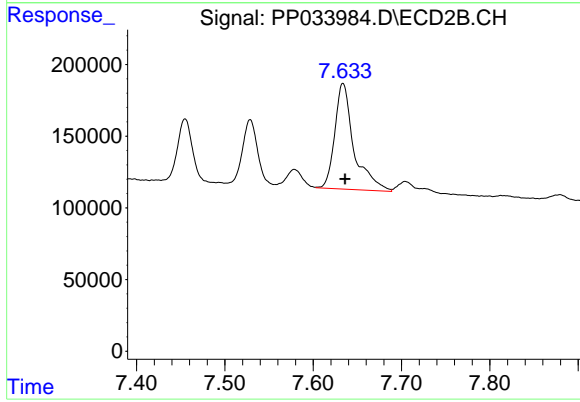
#30 AR-1254-5

R.T.: 8.404 min
Delta R.T.: -0.002 min
Response: 2068622
Conc: 525.54 ng/ml

Instrument :
ECD_P
ClientSampleId :
AR1254CCC500

Manual Integrations
APPROVED

Ankita
3/15/2021 1:05:42 PM



#30 AR-1254-5

R.T.: 7.634 min
Delta R.T.: -0.003 min
Response: 1112203
Conc: 590.49 ng/ml