

Data Path : Z:\pestpcbsrv\HPCHEM1\ECD_P\Data\PP031325\
 Data File : PP070481.D
 Signal(s) : Signal #1: ECD1A.ch Signal #2: ECD2B.ch
 Acq On : 13 Mar 2025 11:33
 Operator : YP\AJ
 Sample : Q1554-07 10X
 Misc :
 ALS Vial : 15 Sample Multiplier: 1

Instrument :
 ECD_P
ClientSampleId :
 BC226505LOZ-2-1

Manual Integrations
APPROVED
 Reviewed By :Yogesh Patel 03/14/2025
 Supervised By :Ankita Jodhani 03/14/2025

Integration File signal 1: autoint1.e
 Integration File signal 2: autoint2.e
 Quant Time: Mar 13 12:14:54 2025
 Quant Method : Z:\pestpcbsrv\HPCHEM1\ECD_P\methods\PP031125.M
 Quant Title : GC EXTRACTABLES
 QLast Update : Wed Mar 12 02:42:43 2025
 Response via : Initial Calibration
 Integrator: ChemStation

Volume Inj. : 2 µl
 Signal #1 Phase : ZB-MR1 Signal #2 Phase: ZB-MR2
 Signal #1 Info : 30Mx0.32mmx 0.50µ Signal #2 Info : 30M x 0.32mm x 0.25µm

Compound	RT#1	RT#2	Resp#1	Resp#2	ng/ml	ng/ml

System Monitoring Compounds						
1) SA Tetrachlo...	4.520	3.825	1817862	1585129	1.169m	1.582m#
2) SA Decachlor...	10.242	8.873	2163664	2172636	2.037	2.221

Target Compounds

(f)=RT Delta > 1/2 Window (#)=Amounts differ by > 25% (m)=manual int.

Data Path : Z:\pestpcbsrv\HPCHEM1\ECD_P\Data\PP031325\
Data File : PP070481.D
Signal(s) : Signal #1: ECD1A.ch Signal #2: ECD2B.ch
Acq On : 13 Mar 2025 11:33
Operator : YP\AJ
Sample : Q1554-07 10X
Misc :
ALS Vial : 15 Sample Multiplier: 1

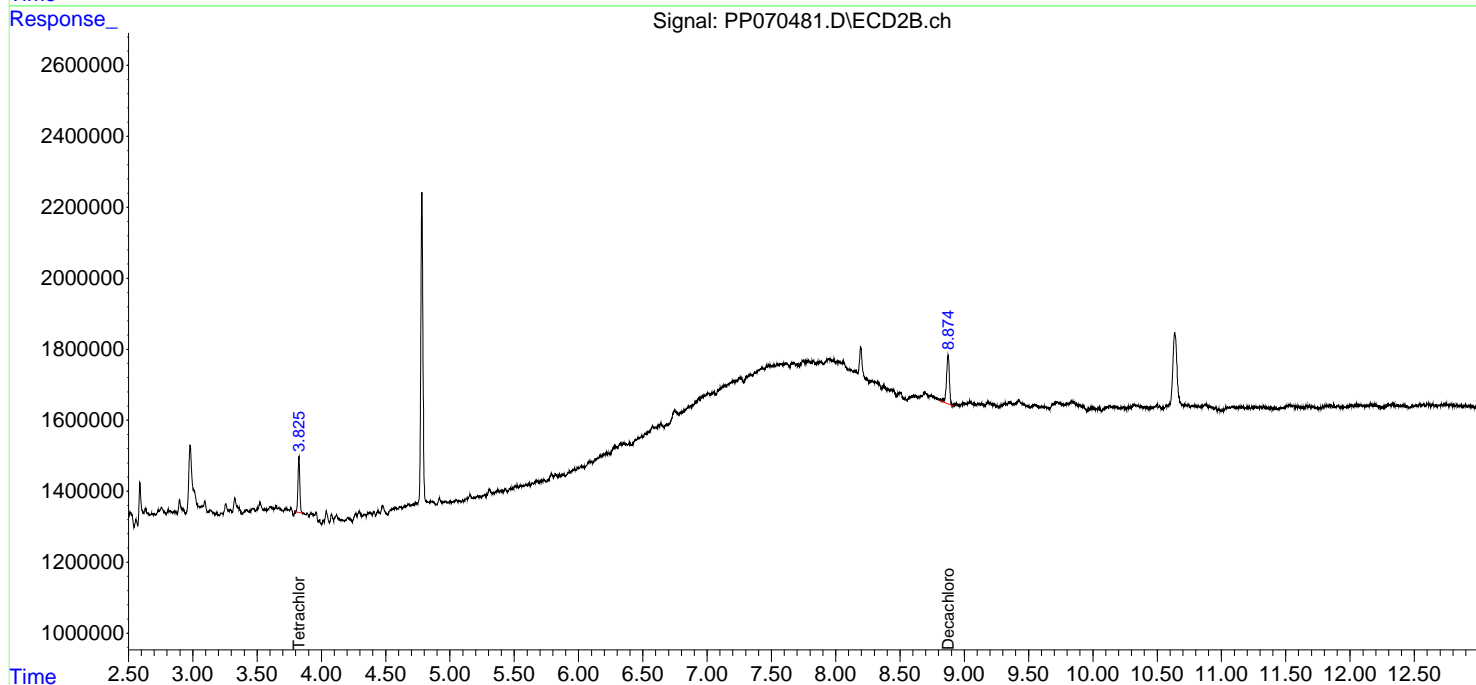
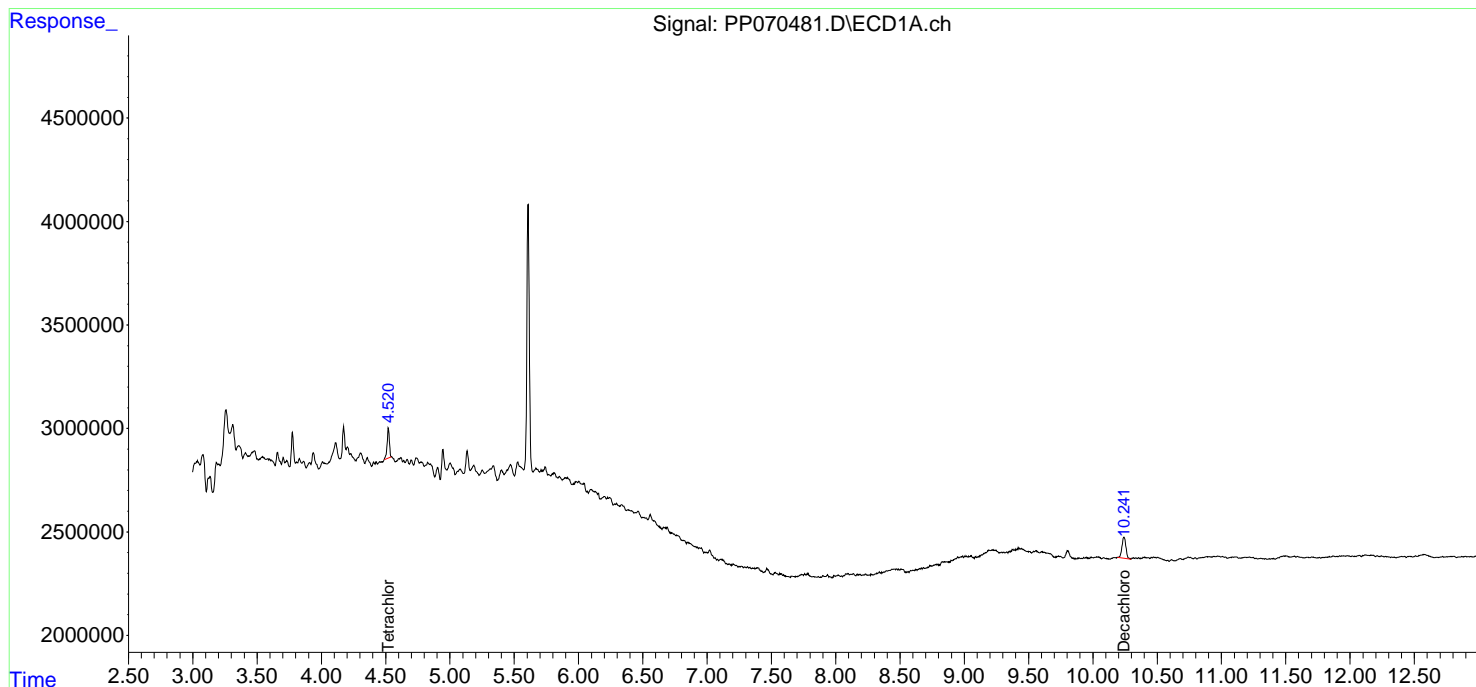
Instrument :
ECD_P
ClientSampleId :
BC226505LOZ-2-1

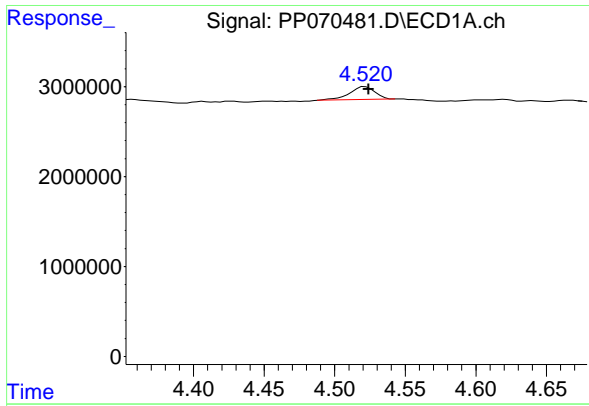
Manual Integrations
APPROVED

Reviewed By :Yogesh Patel 03/14/2025
Supervised By :Ankita Jodhani 03/14/2025

Integration File signal 1: autoint1.e
Integration File signal 2: autoint2.e
Quant Time: Mar 13 12:14:54 2025
Quant Method : Z:\pestpcbsrv\HPCHEM1\ECD_P\methods\PP031125.M
Quant Title : GC EXTRACTABLES
QLast Update : Wed Mar 12 02:42:43 2025
Response via : Initial Calibration
Integrator: ChemStation

Volume Inj. : 2 µl
Signal #1 Phase : ZB-MR1 Signal #2 Phase: ZB-MR2
Signal #1 Info : 30Mx0.32mmx 0.50µm Signal #2 Info : 30M x 0.32mm x 0.25µm





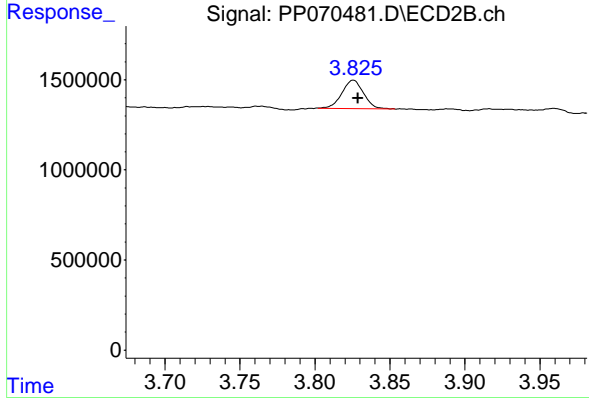
#1 Tetrachloro-m-xylene

R.T.: 4.520 min
 Delta R.T.: -0.004 min
 Response: 1817862
 Conc: 1.17 ng/ml

Instrument : ECD_P
 Client Sample Id : BC226505LOZ-2-1

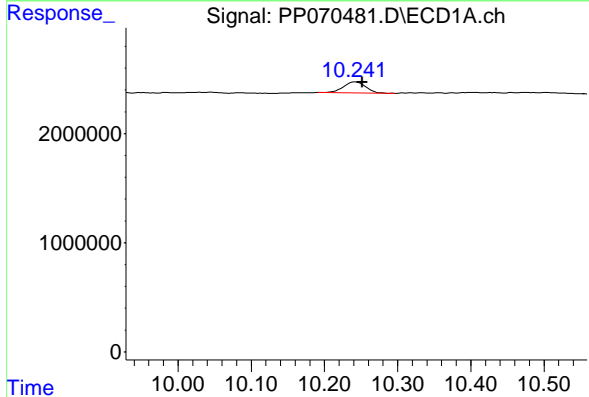
Manual Integrations
 APPROVED

Reviewed By :Yogesh Patel 03/14/2025
 Supervised By :Ankita Jodhani 03/14/2025



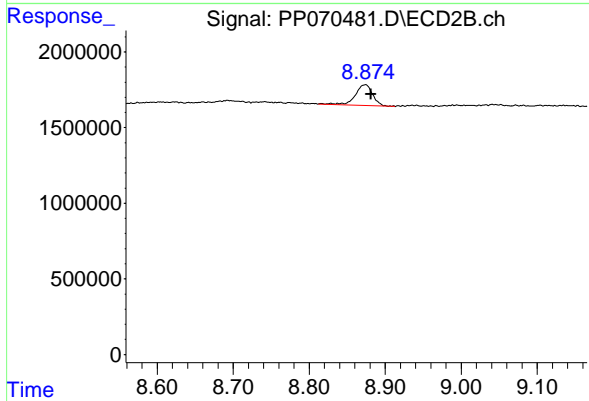
#1 Tetrachloro-m-xylene

R.T.: 3.825 min
 Delta R.T.: -0.003 min
 Response: 1585129
 Conc: 1.58 ng/ml m



#2 Decachlorobiphenyl

R.T.: 10.242 min
 Delta R.T.: -0.009 min
 Response: 2163664
 Conc: 2.04 ng/ml



#2 Decachlorobiphenyl

R.T.: 8.873 min
 Delta R.T.: -0.008 min
 Response: 2172636
 Conc: 2.22 ng/ml