

Data Path : Z:\pestpcbsrv\HPCHEM1\ECD\_P\Data\PP031423\  
 Data File : PP056491.D  
 Signal(s) : Signal #1: ECD1A.ch Signal #2: ECD2B.ch  
 Acq On : 14 Mar 2023 10:30  
 Operator : YP\AJ  
 Sample : AR1242CCC500  
 Misc :  
 ALS Vial : 4 Sample Multiplier: 1

**Instrument :**  
 ECD\_P  
**ClientSampleId :**  
 AR1242CCC500

Integration File signal 1: autoint1.e  
 Integration File signal 2: autoint2.e  
 Quant Time: Mar 14 12:02:24 2023  
 Quant Method : Z:\pestpcbsrv\HPCHEM1\ECD\_P\methods\PP030823.M  
 Quant Title : GC EXTRACTABLES  
 QLast Update : Wed Mar 08 02:03:40 2023  
 Response via : Initial Calibration  
 Integrator: ChemStation

Volume Inj. : 2 µl  
 Signal #1 Phase : ZB-MR1 Signal #2 Phase: ZB-MR2  
 Signal #1 Info : 30Mx0.32mmx 0.50µ Signal #2 Info : 30M x 0.32mm x 0.25µm

Compound	RT#1	RT#2	Resp#1	Resp#2	ng/ml	ng/ml
-----						
System Monitoring Compounds						
1) SA Tetrachlo...	4.317	3.557	83965285	68455868	54.076	48.513
2) SA Decachlor...	10.063	8.556	92516339	54725505	46.576	48.956
Target Compounds						
16) L4 AR-1242-1	5.488	4.638	24943856	16930204	511.835	478.754
17) L4 AR-1242-2	5.510	4.656	36573838	23791268	512.607	468.254
18) L4 AR-1242-3	5.572	4.832	23322675	12896915	512.313	477.935
19) L4 AR-1242-4	5.671	4.916	18909530	13685637	529.050	467.096
20) L4 AR-1242-5	6.411	5.440	20213406	15126332	472.826	468.834
-----						

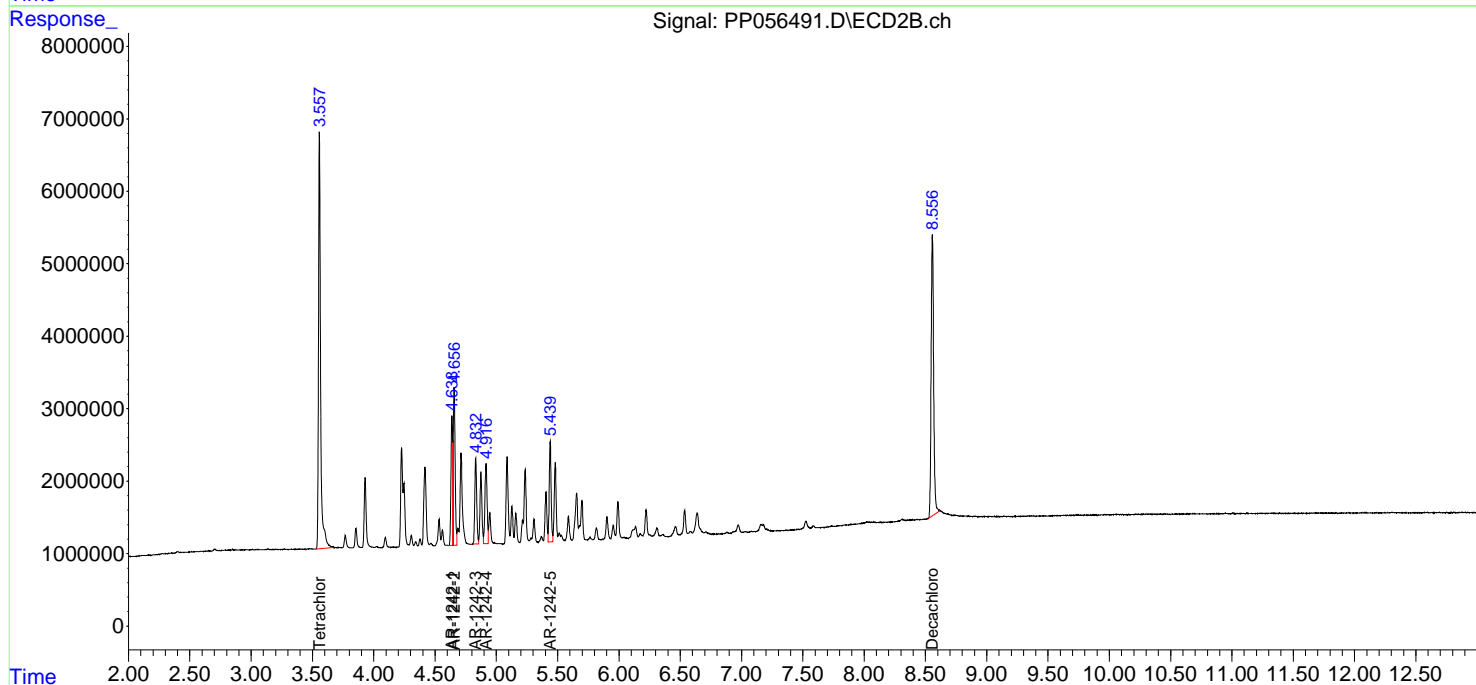
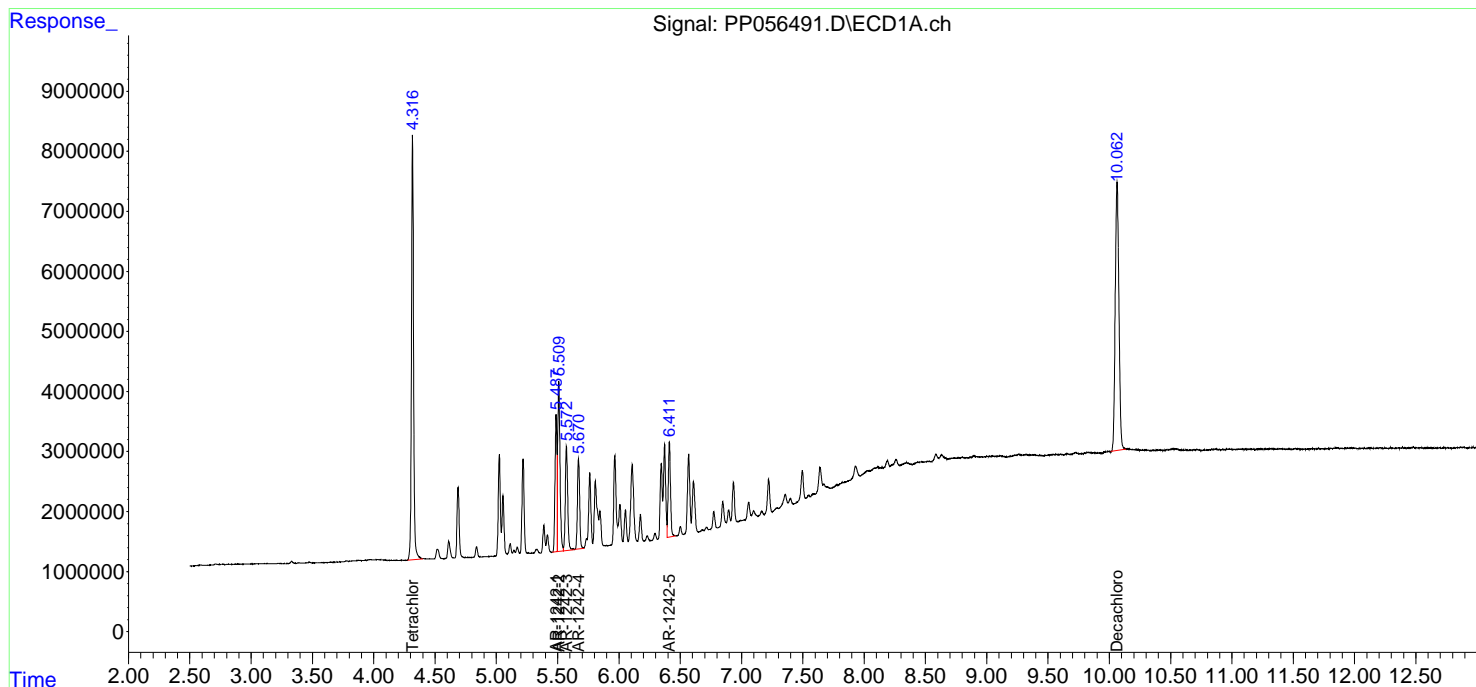
(f)=RT Delta > 1/2 Window (#)=Amounts differ by > 25% (m)=manual int.

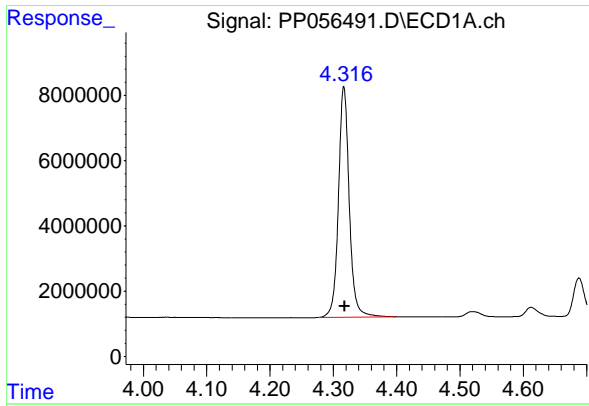
Data Path : Z:\pestpcbsrv\HPCHEM1\ECD\_P\Data\PP031423\  
 Data File : PP056491.D  
 Signal(s) : Signal #1: ECD1A.ch Signal #2: ECD2B.ch  
 Acq On : 14 Mar 2023 10:30  
 Operator : YP\AJ  
 Sample : AR1242CCC500  
 Misc :  
 ALS Vial : 4 Sample Multiplier: 1

Instrument :  
 ECD\_P  
 ClientSampleId :  
 AR1242CCC500

Integration File signal 1: autoint1.e  
 Integration File signal 2: autoint2.e  
 Quant Time: Mar 14 12:02:24 2023  
 Quant Method : Z:\pestpcbsrv\HPCHEM1\ECD\_P\methods\PP030823.M  
 Quant Title : GC EXTRACTABLES  
 QLast Update : Wed Mar 08 02:03:40 2023  
 Response via : Initial Calibration  
 Integrator: ChemStation

Volume Inj. : 2 µl  
 Signal #1 Phase : ZB-MR1 Signal #2 Phase: ZB-MR2  
 Signal #1 Info : 30Mx0.32mmx 0.50µ Signal #2 Info : 30M x 0.32mm x 0.25µm

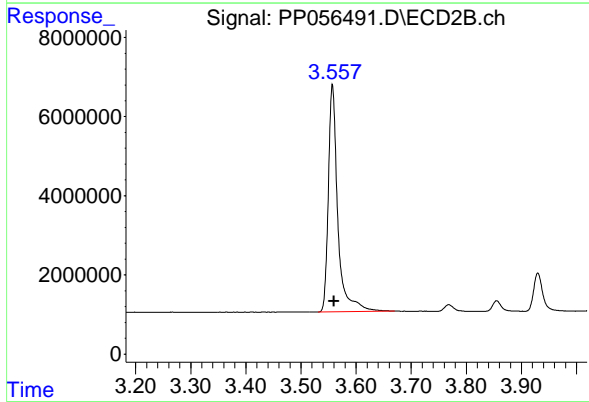




#1 Tetrachloro-m-xylene

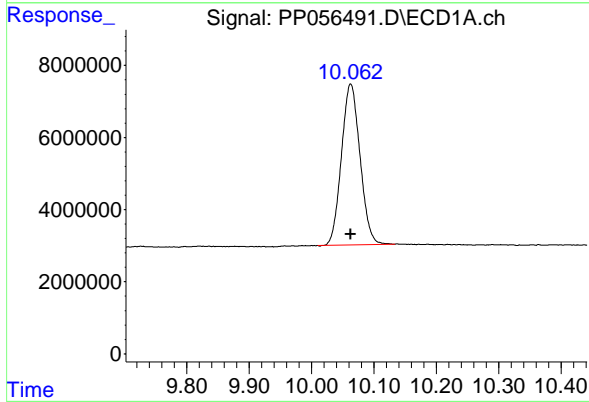
R.T.: 4.317 min  
 Delta R.T.: -0.001 min  
 Response: 83965285  
 Conc: 54.08 ng/ml

Instrument :  
 ECD\_P  
 ClientSampleId :  
 AR1242CCC500



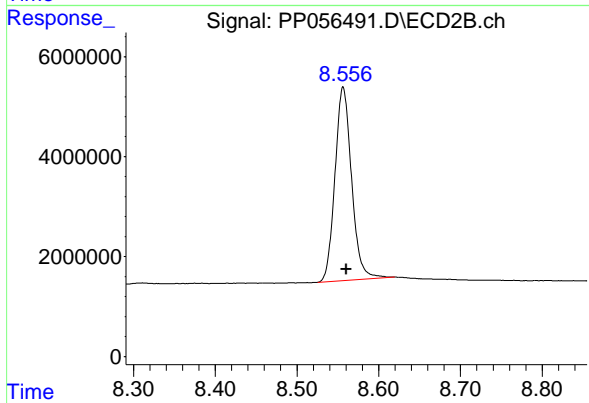
#1 Tetrachloro-m-xylene

R.T.: 3.557 min  
 Delta R.T.: -0.003 min  
 Response: 68455868  
 Conc: 48.51 ng/ml



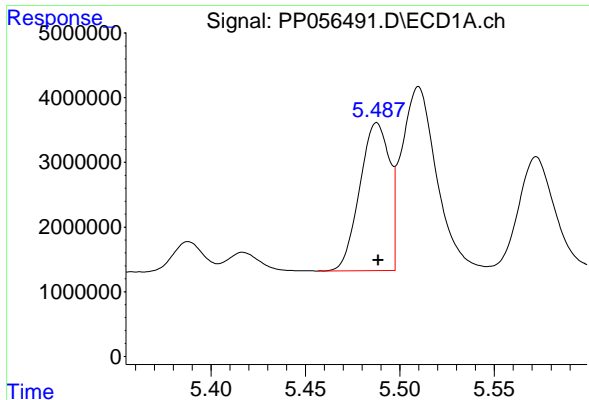
#2 Decachlorobiphenyl

R.T.: 10.063 min  
 Delta R.T.: 0.000 min  
 Response: 92516339  
 Conc: 46.58 ng/ml



#2 Decachlorobiphenyl

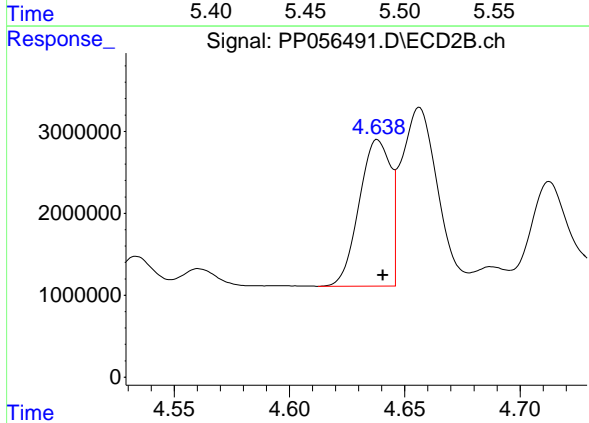
R.T.: 8.556 min  
 Delta R.T.: -0.004 min  
 Response: 54725505  
 Conc: 48.96 ng/ml



#16 AR-1242-1

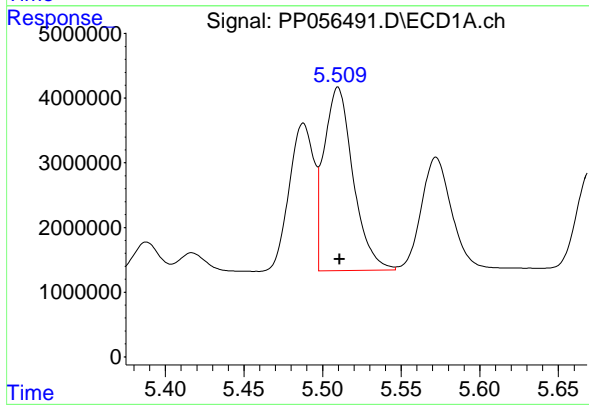
R.T.: 5.488 min  
 Delta R.T.: 0.000 min  
 Response: 24943856  
 Conc: 511.84 ng/ml

Instrument :  
 ECD\_P  
 ClientSampleId :  
 AR1242CCC500



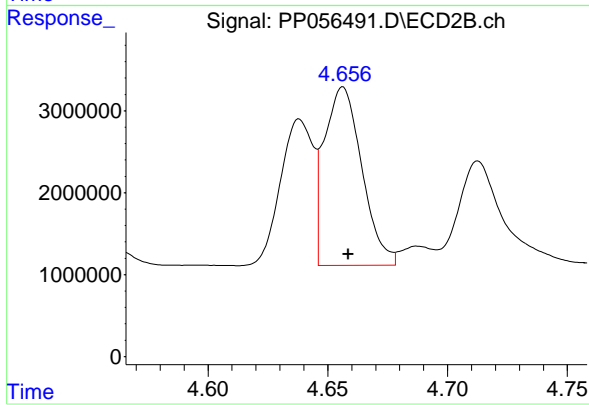
#16 AR-1242-1

R.T.: 4.638 min  
 Delta R.T.: -0.002 min  
 Response: 16930204  
 Conc: 478.75 ng/ml



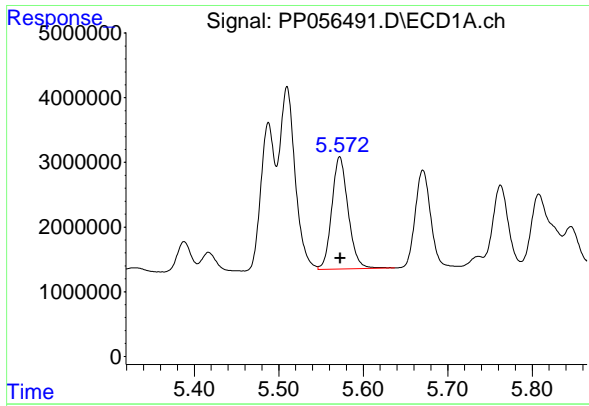
#17 AR-1242-2

R.T.: 5.510 min  
 Delta R.T.: 0.000 min  
 Response: 36573838  
 Conc: 512.61 ng/ml



#17 AR-1242-2

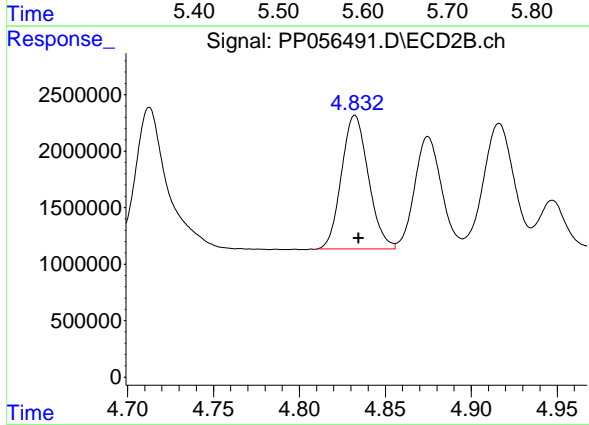
R.T.: 4.656 min  
 Delta R.T.: -0.002 min  
 Response: 23791268  
 Conc: 468.25 ng/ml



#18 AR-1242-3

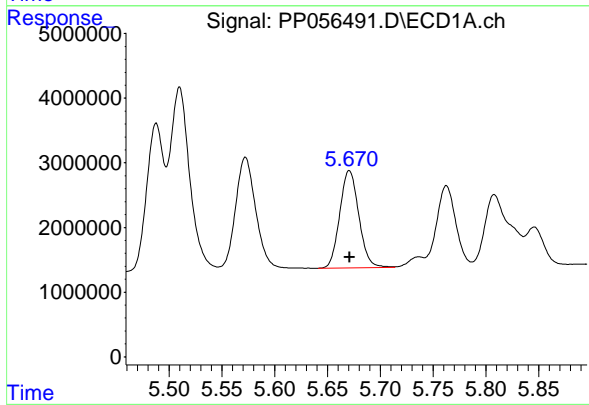
R.T.: 5.572 min  
 Delta R.T.: 0.000 min  
 Response: 23322675  
 Conc: 512.31 ng/ml

Instrument :  
 ECD\_P  
 ClientSampleId :  
 AR1242CCC500



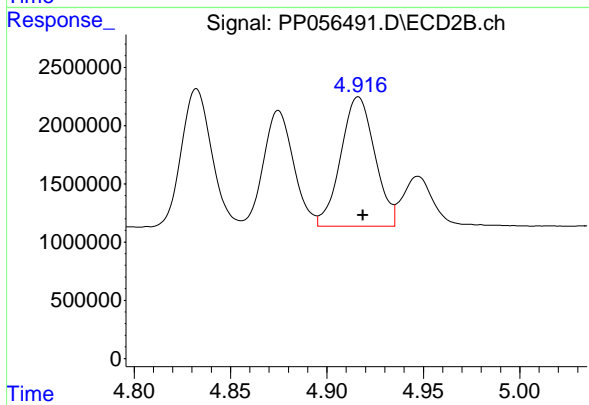
#18 AR-1242-3

R.T.: 4.832 min  
 Delta R.T.: -0.002 min  
 Response: 12896915  
 Conc: 477.93 ng/ml



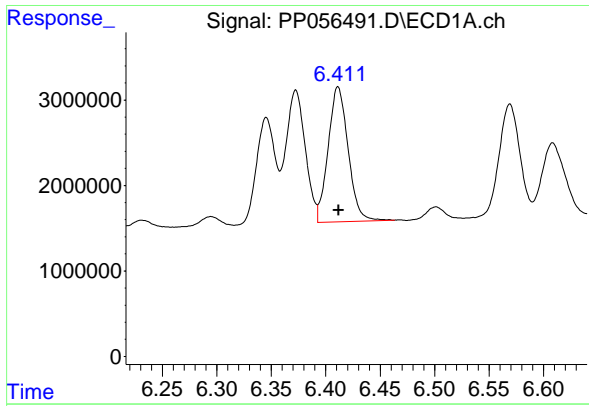
#19 AR-1242-4

R.T.: 5.671 min  
 Delta R.T.: 0.000 min  
 Response: 18909530  
 Conc: 529.05 ng/ml



#19 AR-1242-4

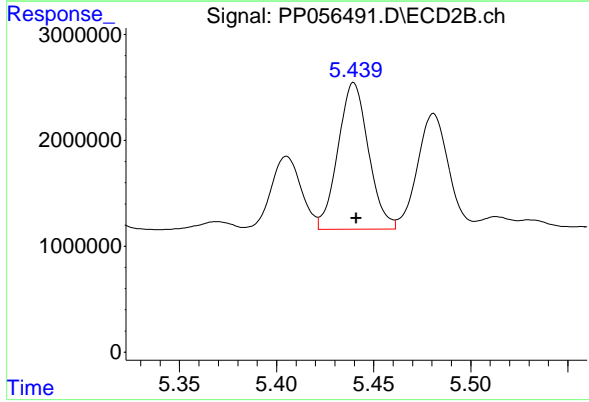
R.T.: 4.916 min  
 Delta R.T.: -0.002 min  
 Response: 13685637  
 Conc: 467.10 ng/ml



#20 AR-1242-5

R.T.: 6.411 min  
 Delta R.T.: 0.000 min  
 Response: 20213406  
 Conc: 472.83 ng/ml

Instrument :  
 ECD\_P  
 ClientSampleId :  
 AR1242CCC500



#20 AR-1242-5

R.T.: 5.440 min  
 Delta R.T.: -0.001 min  
 Response: 15126332  
 Conc: 468.83 ng/ml