

Data Path : Z:\pestpcbsrv\HPCHEM1\ECD_P\Data\PP031423\
 Data File : PP056493.D
 Signal(s) : Signal #1: ECD1A.ch Signal #2: ECD2B.ch
 Acq On : 14 Mar 2023 11:03
 Operator : YP\AJ
 Sample : I.BLK
 Misc :
 ALS Vial : 2 Sample Multiplier: 1

Instrument :
 ECD_P
 ClientSampleId :
 I.BLK

Integration File signal 1: autoint1.e
 Integration File signal 2: autoint2.e
 Quant Time: Mar 14 12:02:56 2023
 Quant Method : Z:\pestpcbsrv\HPCHEM1\ECD_P\methods\PP030823.M
 Quant Title : GC EXTRACTABLES
 QLast Update : Wed Mar 08 02:03:40 2023
 Response via : Initial Calibration
 Integrator: ChemStation

Volume Inj. : 2 µl
 Signal #1 Phase : ZB-MR1 Signal #2 Phase: ZB-MR2
 Signal #1 Info : 30Mx0.32mmx 0.50µ Signal #2 Info : 30M x 0.32mm x 0.25µm

Compound	RT#1	RT#2	Resp#1	Resp#2	ng/ml	ng/ml

System Monitoring Compounds						
1) SA Tetrachlo...	4.316	3.557	36873428	29139521	23.747	20.651
2) SA Decachlor...	10.063	8.556	44624477	27505631	22.465	24.606

Target Compounds

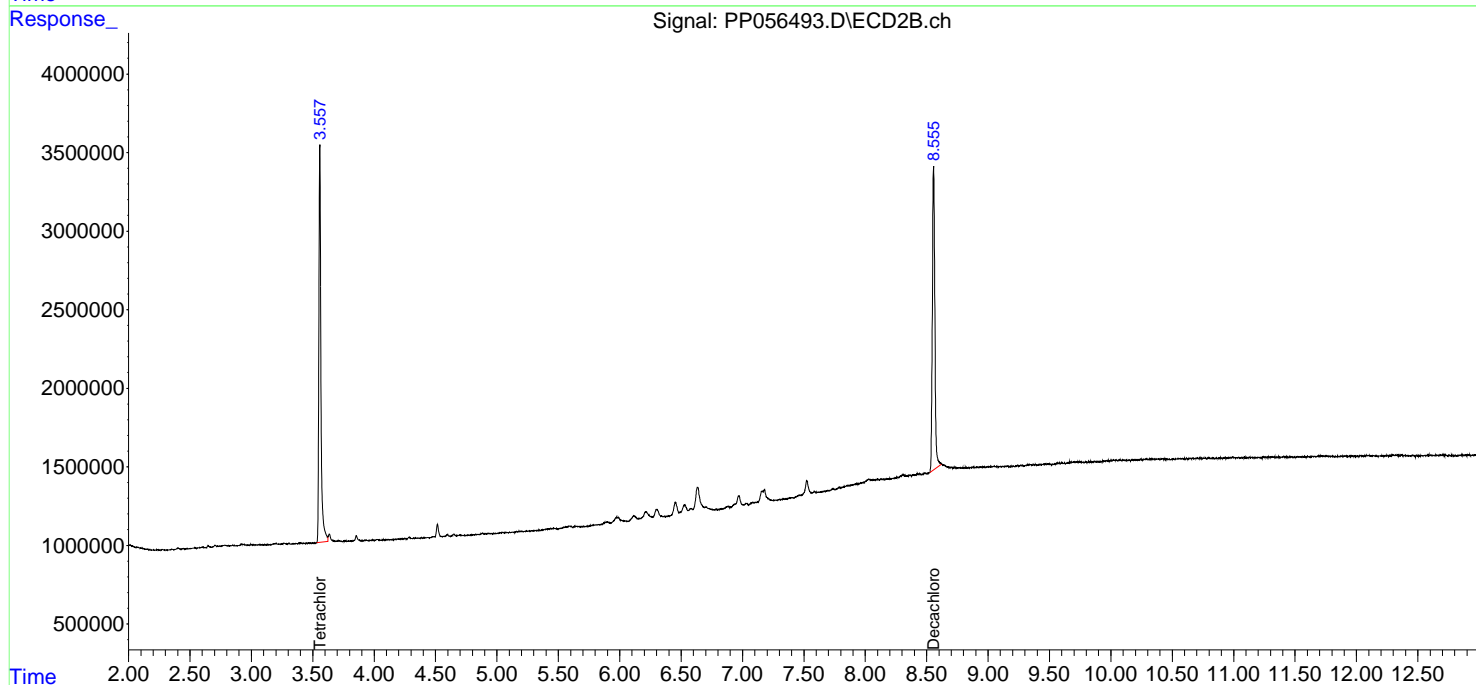
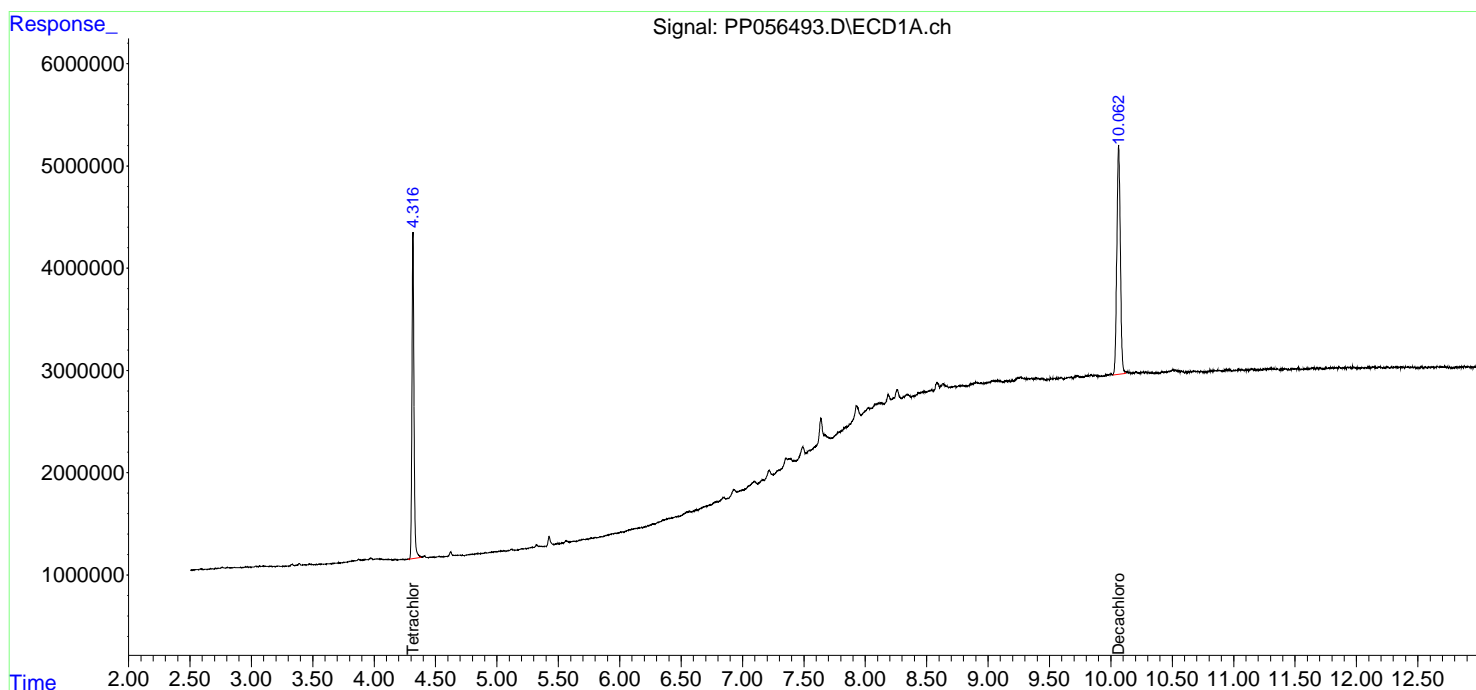
(f)=RT Delta > 1/2 Window (#)=Amounts differ by > 25% (m)=manual int.

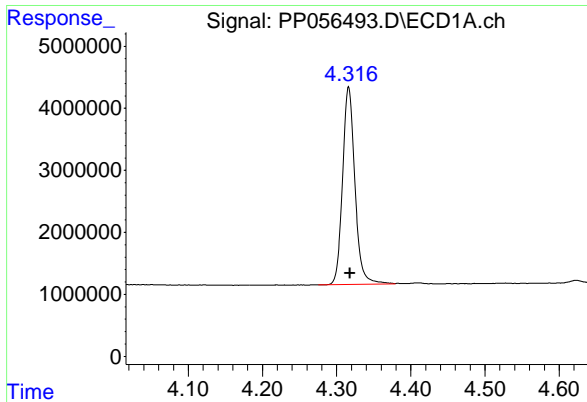
Data Path : Z:\pestpcbsrv\HPCHEM1\ECD_P\Data\PP031423\
 Data File : PP056493.D
 Signal(s) : Signal #1: ECD1A.ch Signal #2: ECD2B.ch
 Acq On : 14 Mar 2023 11:03
 Operator : YP\AJ
 Sample : I.BLK
 Misc :
 ALS Vial : 2 Sample Multiplier: 1

Instrument :
 ECD_P
 ClientSampleId :
 I.BLK

Integration File signal 1: autoint1.e
 Integration File signal 2: autoint2.e
 Quant Time: Mar 14 12:02:56 2023
 Quant Method : Z:\pestpcbsrv\HPCHEM1\ECD_P\methods\PP030823.M
 Quant Title : GC EXTRACTABLES
 QLast Update : Wed Mar 08 02:03:40 2023
 Response via : Initial Calibration
 Integrator: ChemStation

Volume Inj. : 2 µl
 Signal #1 Phase : ZB-MR1 Signal #2 Phase: ZB-MR2
 Signal #1 Info : 30Mx0.32mmx 0.50µm Signal #2 Info : 30M x 0.32mm x 0.25µm

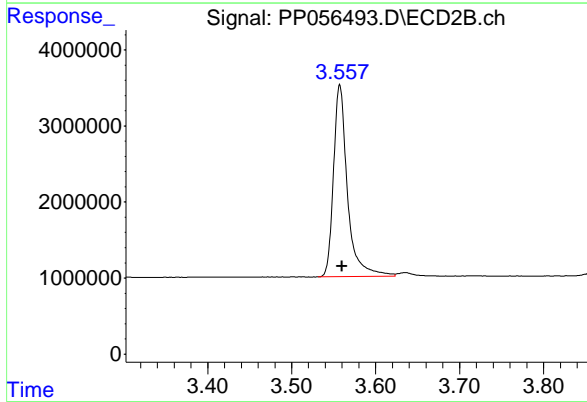




#1 Tetrachloro-m-xylene

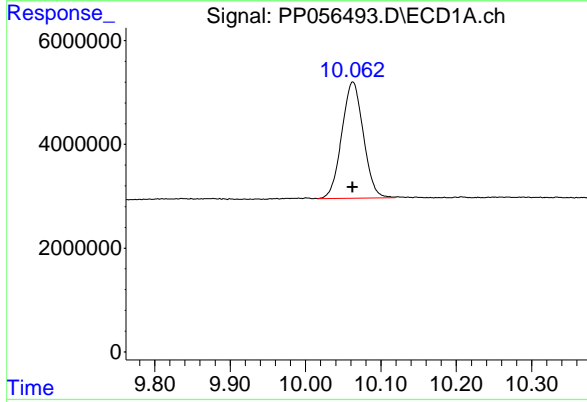
R.T.: 4.316 min
 Delta R.T.: -0.002 min
 Response: 36873428
 Conc: 23.75 ng/ml

Instrument :
 ECD_P
 ClientSampleId :
 I.BLK



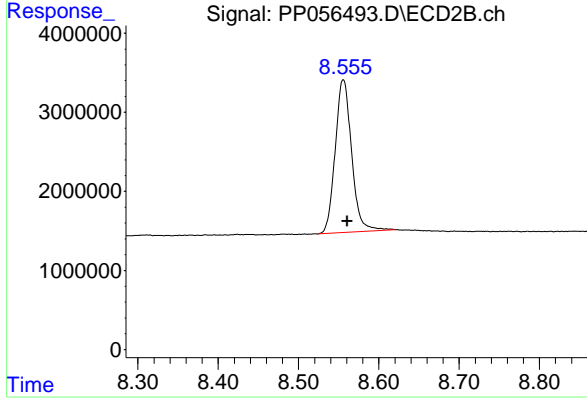
#1 Tetrachloro-m-xylene

R.T.: 3.557 min
 Delta R.T.: -0.003 min
 Response: 29139521
 Conc: 20.65 ng/ml



#2 Decachlorobiphenyl

R.T.: 10.063 min
 Delta R.T.: 0.000 min
 Response: 44624477
 Conc: 22.47 ng/ml



#2 Decachlorobiphenyl

R.T.: 8.556 min
 Delta R.T.: -0.005 min
 Response: 27505631
 Conc: 24.61 ng/ml