

Data Path : Z:\pestpcbsrv\HPCHEM1\ECD\_P\Data\PP031521\  
 Data File : PP033999.D  
 Signal(s) : Signal #1: ECD1A.CH Signal #2: ECD2B.CH  
 Acq On : 15 Mar 2021 12:59  
 Operator : DD\AJ  
 Sample : AR1660CCC500  
 Misc :  
 ALS Vial : 3 Sample Multiplier: 1

Instrument :  
 ECD\_P  
 ClientSampled :

Integration File signal 1: autoint1.e  
 Integration File signal 2: autoint2.e  
 Quant Time: Mar 15 16:08:38 2021  
 Quant Method : Z:\pestpcbsrv\HPCHEM1\ECD\_P\methods\PP030921.M  
 Quant Title : GC EXTRACTABLES  
 QLast Update : Fri Mar 12 12:21:17 2021  
 Response via : Initial Calibration  
 Integrator: ChemStation 6890 Scale Mode: Small noise peaks clipped

Volume Inj. : 2 µl  
 Signal #1 Phase : ZB-MR1 Signal #2 Phase: ZB-MR2  
 Signal #1 Info : 30Mx0.32mmx 0.50µ Signal #2 Info : 30M x 0.32mm x 0.25µm

Compound	RT#1	RT#2	Resp#1	Resp#2	ng/ml	ng/ml
System Monitoring Compounds						
1) SA Tetrachlo...	4.853	4.265	4361789	2105964	50.411	51.838
2) SA Decachlor...	10.779	9.588	4338932	1350322	51.376	50.602
Target Compounds						
3) L1 AR-1016-1	6.166	5.522	1335932	550853	501.450	483.989
4) L1 AR-1016-2	6.189	5.542	1928345	782956	477.096	473.646
5) L1 AR-1016-3	6.255	5.735	1205119	406319	486.999	443.429
6) L1 AR-1016-4	6.361	5.784	991337	316821	486.316	438.743
7) L1 AR-1016-5	6.675	6.014	954536	431745	470.906	466.956
8) L2 AR-1221-1	5.097	4.520	121920	60258	132.120	141.511
9) L2 AR-1221-2	5.200	4.620	185740	87726	264.332	271.112
10) L2 AR-1221-3	5.286	4.710	676770	318266	321.534	324.691
11) L3 AR-1232-1	5.286	4.710	676770	318266	391.173	391.756
12) L3 AR-1232-2	5.872	5.542	1030126	782956	1124.789	1080.400
13) L3 AR-1232-3	6.189	5.735	1928345	406319	1140.858	1056.584
14) L3 AR-1232-4	6.361	5.829	991337	395879	1160.478	1186.942
15) L3 AR-1232-5	6.459	6.014	775693	431745	1307.567	1191.351
16) L4 AR-1242-1	6.166	5.522	1335932	550853	658.401	623.835
17) L4 AR-1242-2	6.189	5.542	1928345	782956	635.091	624.252
18) L4 AR-1242-3	6.255	5.735	1205119	406319	630.745	575.415
19) L4 AR-1242-4	6.361	5.829	991337	395879	637.374	578.198
20) L4 AR-1242-5	7.141	6.392	137198	306992	85.469	384.034 #
21) L5 AR-1248-1	6.166	5.522	1335932	550853	856.388	809.238
22) L5 AR-1248-2	6.459	5.784	775693	316821	364.405	337.665
23) L5 AR-1248-3	6.675	5.829	954536	395879	370.321	393.151
24) L5 AR-1248-4	7.101	6.014	167892	431745	60.686	368.759 #
25) L5 AR-1248-5	7.141	6.435	137198	46700	50.305	43.357
26) L6 AR-1254-1	7.070	6.392	648093	306992	221.851	188.302
27) L6 AR-1254-2	7.300	6.549	720313	279703	158.411	195.841
28) L6 AR-1254-3	7.680	6.987	426290	553925	86.220	242.014 #
29) L6 AR-1254-4	7.974	7.206	273928	72559	79.862	57.087 #
30) L6 AR-1254-5	8.402	7.633	2458131	938532	624.500	498.286
31) L7 AR-1260-1	7.847	7.105	1729817	734557	503.720	480.645
32) L7 AR-1260-2	8.113	7.299	2251541	867090	546.857	479.385
33) L7 AR-1260-3	8.477	7.456	1669743	778887	515.867	459.904
34) L7 AR-1260-4	8.706	7.936	1909248	686636	515.432	466.877
35) L7 AR-1260-5	9.025	8.179	3912591	1590379	505.750	489.151
36) L8 AR-1262-1	8.477	7.633	1669743	938532	350.925	882.900 #
37) L8 AR-1262-2	9.025	8.179	3912591	1590379	452.667	477.278
38) L8 AR-1262-3	9.347f	8.465	2530328	378327	416.937	264.915 #
39) L8 AR-1262-4	9.417	8.528	772598	1163400	155.869	461.450 #
40) L8 AR-1262-5	10.061	9.027	1287513	436846	391.182	383.240
41) L9 AR-1268-1	9.347f	8.465	2530328	378327	243.013	98.912 #

Data Path : Z:\pestpcbsrv\HPCHEM1\ECD\_P\Data\PP031521\  
 Data File : PP033999.D  
 Signal(s) : Signal #1: ECD1A.CH Signal #2: ECD2B.CH  
 Acq On : 15 Mar 2021 12:59  
 Operator : DD\AJ  
 Sample : AR1660CCC500  
 Misc :  
 ALS Vial : 3 Sample Multiplier: 1

Instrument :  
 ECD\_P  
 ClientSampleId :

Integration File signal 1: autoint1.e  
 Integration File signal 2: autoint2.e  
 Quant Time: Mar 15 16:08:38 2021  
 Quant Method : Z:\pestpcbsrv\HPCHEM1\ECD\_P\methods\PP030921.M  
 Quant Title : GC EXTRACTABLES  
 QLast Update : Fri Mar 12 12:21:17 2021  
 Response via : Initial Calibration  
 Integrator: ChemStation 6890 Scale Mode: Small noise peaks clipped

Volume Inj. : 2 µl  
 Signal #1 Phase : ZB-MR1 Signal #2 Phase: ZB-MR2  
 Signal #1 Info : 30Mx0.32mmx 0.50µ Signal #2 Info : 30M x 0.32mm x 0.25µm

	Compound	RT#1	RT#2	Resp#1	Resp#2	ng/ml	ng/ml
42)	L9 AR-1268-2	9.417	8.528	772598	1163400	76.444	325.615 #
43)	L9 AR-1268-3	9.638	8.736	67312	26537	7.580	8.542
44)	L9 AR-1268-4	10.061	9.027	1287513	436846	369.706	359.930
45)	L9 AR-1268-5	10.458	9.325	404358	127985	13.676	13.999

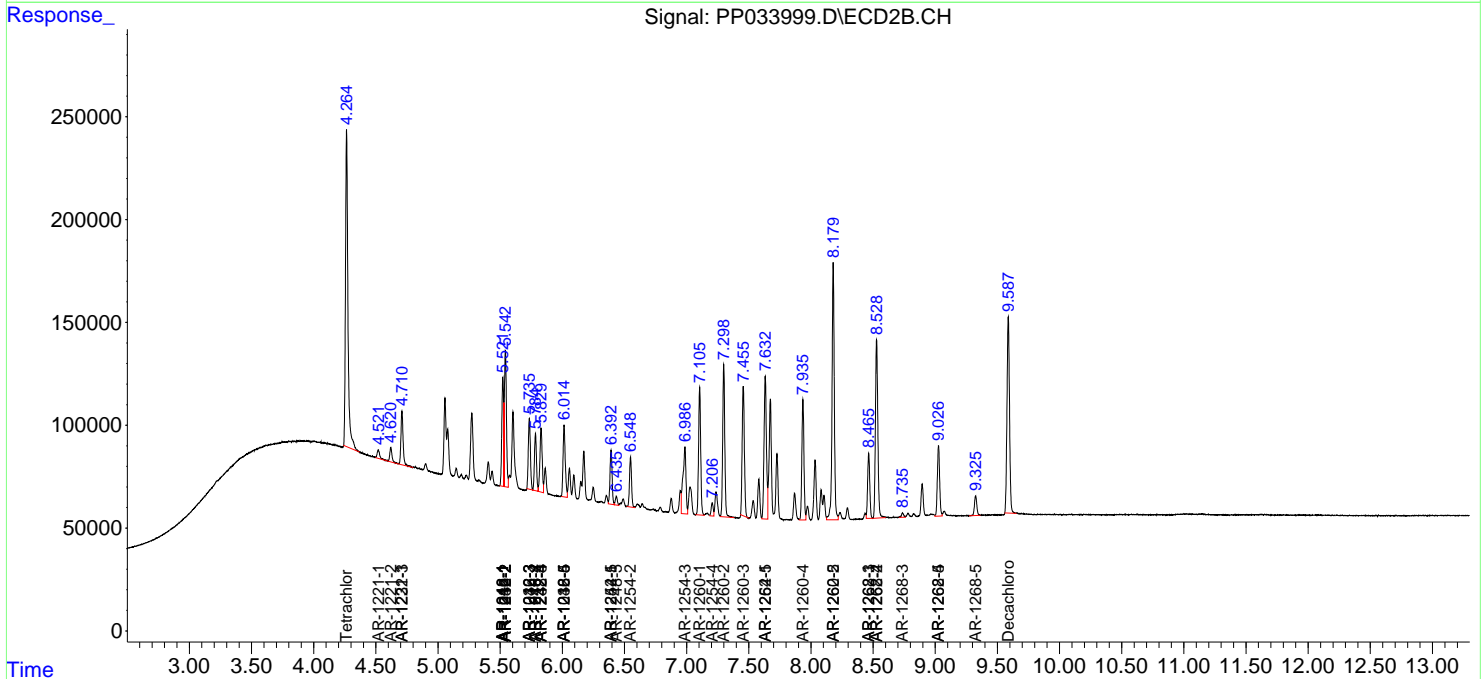
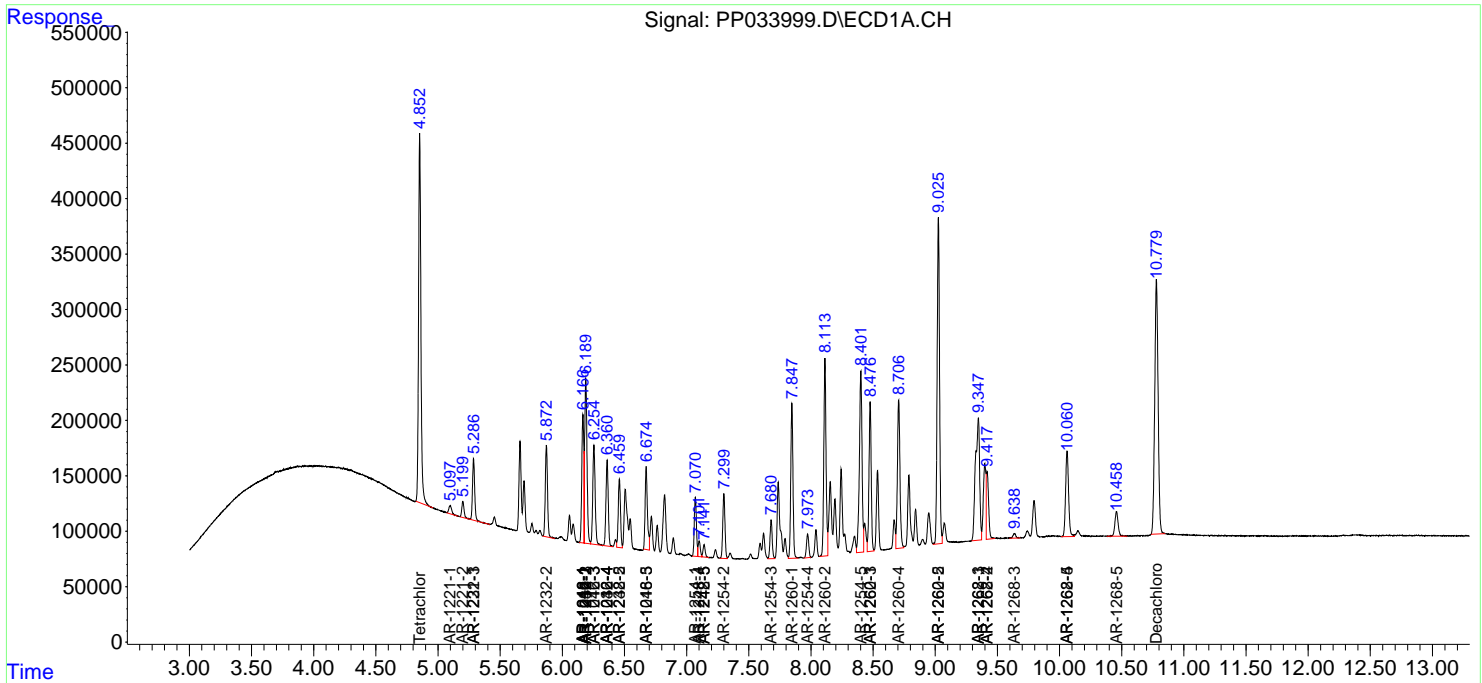
(f)=RT Delta > 1/2 Window (#)=Amounts differ by > 25% (m)=manual int.

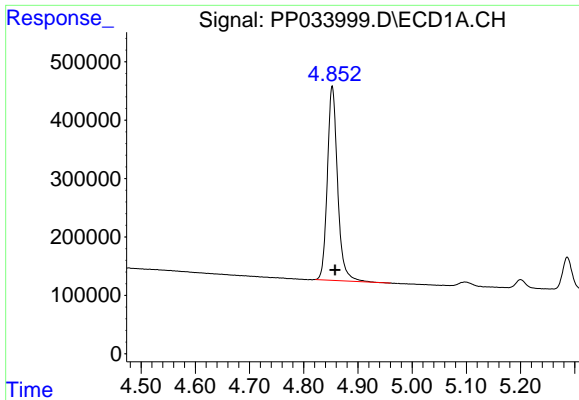
Data Path : Z:\pestpcbsrv\HPCHEM1\ECD\_P\Data\PP031521\  
 Data File : PP033999.D  
 Signal(s) : Signal #1: ECD1A.CH Signal #2: ECD2B.CH  
 Acq On : 15 Mar 2021 12:59  
 Operator : DD\AJ  
 Sample : AR1660CCC500  
 Misc :  
 ALS Vial : 3 Sample Multiplier: 1

Instrument :  
 ECD\_P  
 ClientSampled :

Integration File signal 1: autoint1.e  
 Integration File signal 2: autoint2.e  
 Quant Time: Mar 15 16:08:38 2021  
 Quant Method : Z:\pestpcbsrv\HPCHEM1\ECD\_P\methods\PP030921.M  
 Quant Title : GC EXTRACTABLES  
 QLast Update : Fri Mar 12 12:21:17 2021  
 Response via : Initial Calibration  
 Integrator: ChemStation 6890 Scale Mode: Small noise peaks clipped

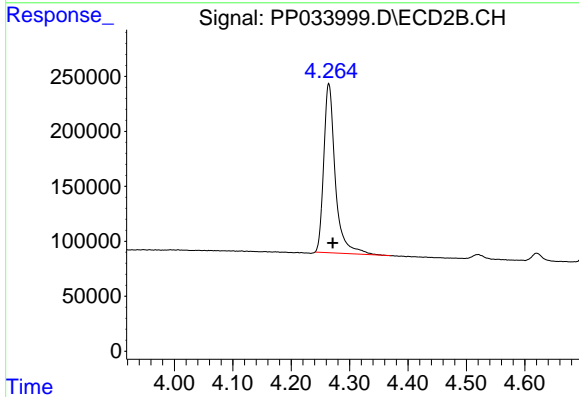
Volume Inj. : 2 µl  
 Signal #1 Phase : ZB-MR1 Signal #2 Phase: ZB-MR2  
 Signal #1 Info : 30Mx0.32mmx 0.50µ Signal #2 Info : 30M x 0.32mm x 0.25µm



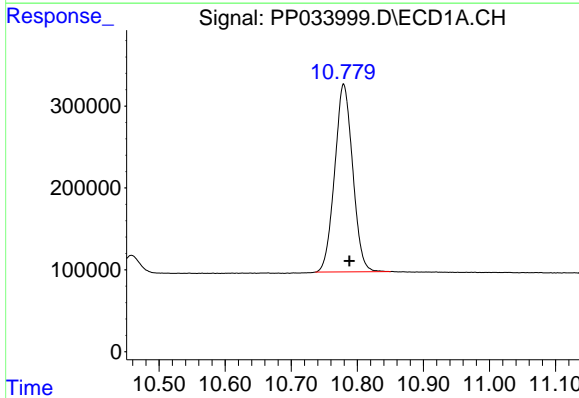


#1 Tetrachloro-m-xylene  
 R.T.: 4.853 min  
 Delta R.T.: -0.005 min  
 Response: 4361789  
 Conc: 50.41 ng/ml

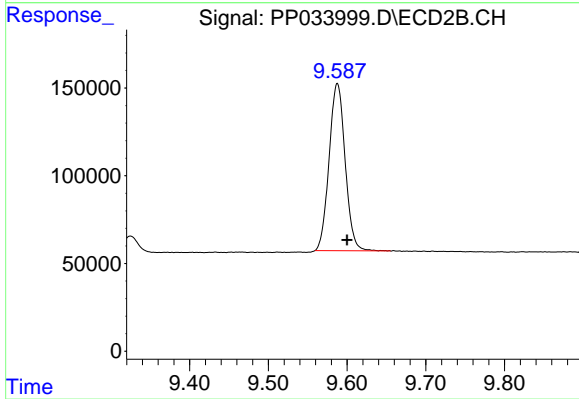
Instrument :  
 ECD\_P  
 ClientSampled :



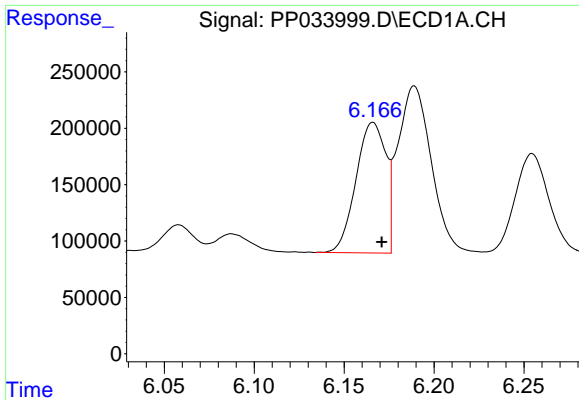
#1 Tetrachloro-m-xylene  
 R.T.: 4.265 min  
 Delta R.T.: -0.007 min  
 Response: 2105964  
 Conc: 51.84 ng/ml



#2 Decachlorobiphenyl  
 R.T.: 10.779 min  
 Delta R.T.: -0.009 min  
 Response: 4338932  
 Conc: 51.38 ng/ml



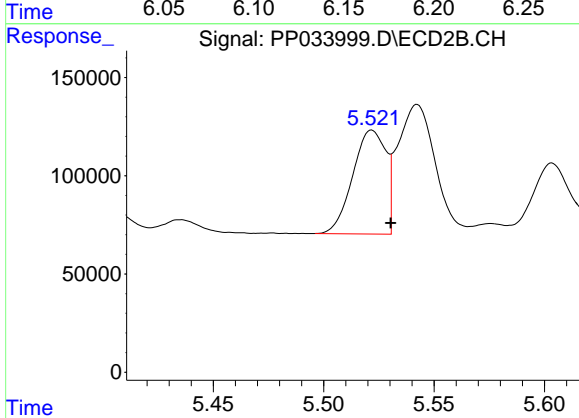
#2 Decachlorobiphenyl  
 R.T.: 9.588 min  
 Delta R.T.: -0.012 min  
 Response: 1350322  
 Conc: 50.60 ng/ml



#3 AR-1016-1

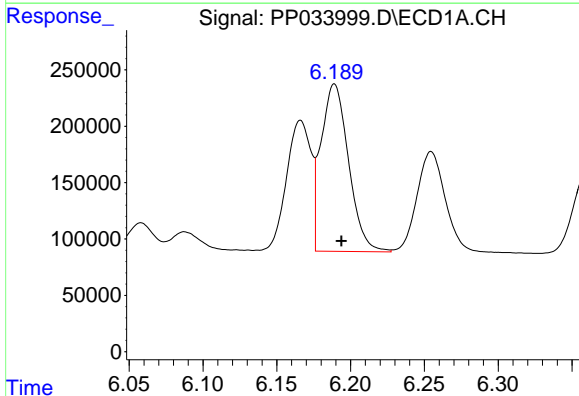
R.T.: 6.166 min  
 Delta R.T.: -0.005 min  
 Response: 1335932  
 Conc: 501.45 ng/ml

Instrument :  
 ECD\_P  
 ClientSampleId :



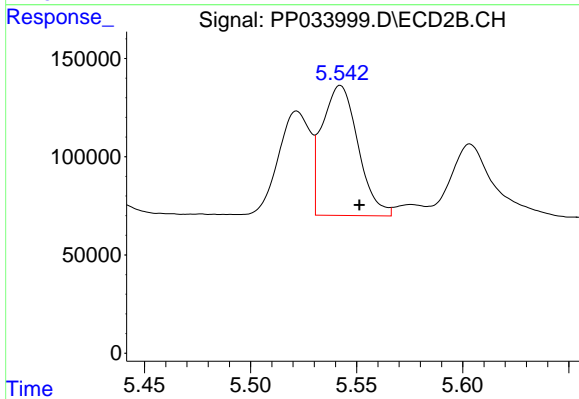
#3 AR-1016-1

R.T.: 5.522 min  
 Delta R.T.: -0.009 min  
 Response: 550853  
 Conc: 483.99 ng/ml



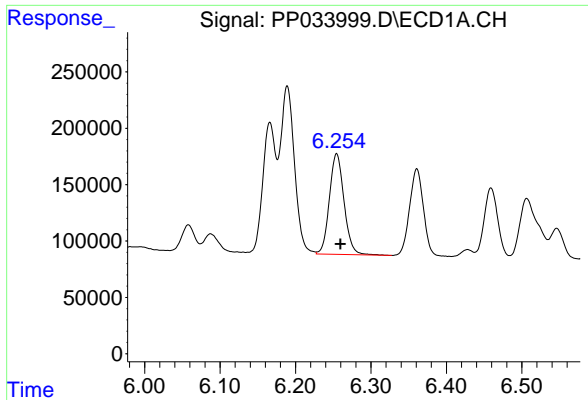
#4 AR-1016-2

R.T.: 6.189 min  
 Delta R.T.: -0.005 min  
 Response: 1928345  
 Conc: 477.10 ng/ml



#4 AR-1016-2

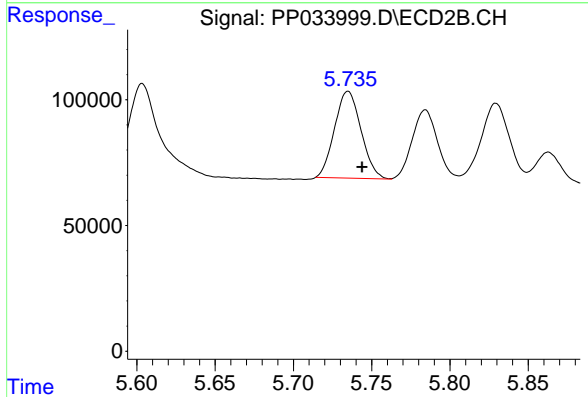
R.T.: 5.542 min  
 Delta R.T.: -0.009 min  
 Response: 782956  
 Conc: 473.65 ng/ml



#5 AR-1016-3

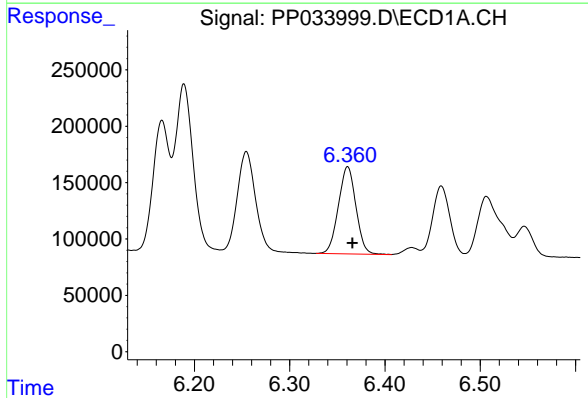
R.T.: 6.255 min  
 Delta R.T.: -0.005 min  
 Response: 1205119  
 Conc: 487.00 ng/ml

Instrument :  
 ECD\_P  
 ClientSampleId :



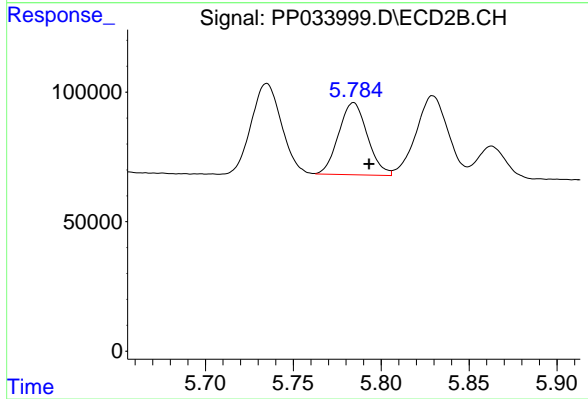
#5 AR-1016-3

R.T.: 5.735 min  
 Delta R.T.: -0.009 min  
 Response: 406319  
 Conc: 443.43 ng/ml



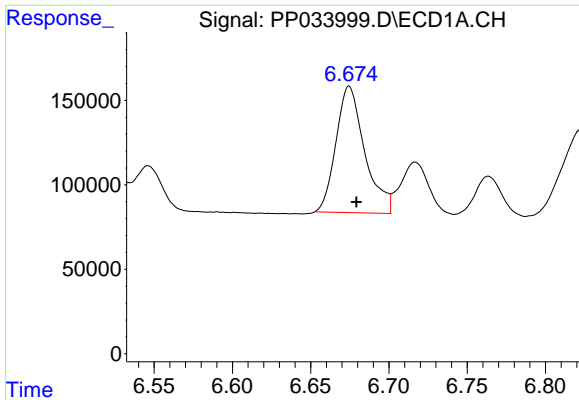
#6 AR-1016-4

R.T.: 6.361 min  
 Delta R.T.: -0.005 min  
 Response: 991337  
 Conc: 486.32 ng/ml



#6 AR-1016-4

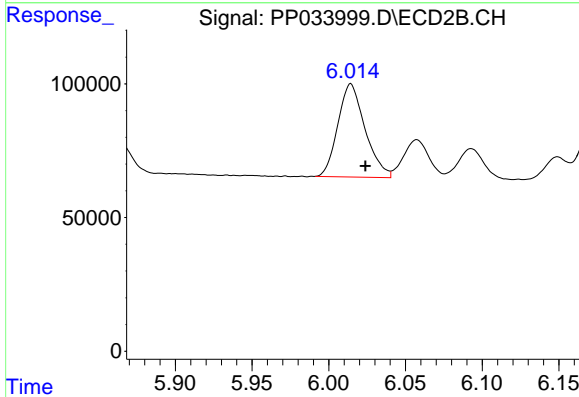
R.T.: 5.784 min  
 Delta R.T.: -0.009 min  
 Response: 316821  
 Conc: 438.74 ng/ml



#7 AR-1016-5

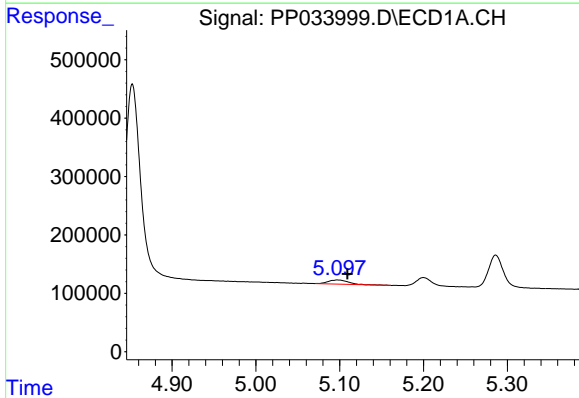
R.T.: 6.675 min  
 Delta R.T.: -0.005 min  
 Response: 954536  
 Conc: 470.91 ng/ml

Instrument :  
 ECD\_P  
 ClientSampleId :



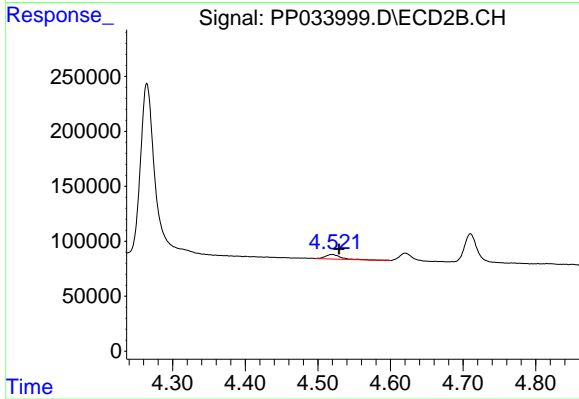
#7 AR-1016-5

R.T.: 6.014 min  
 Delta R.T.: -0.010 min  
 Response: 431745  
 Conc: 466.96 ng/ml



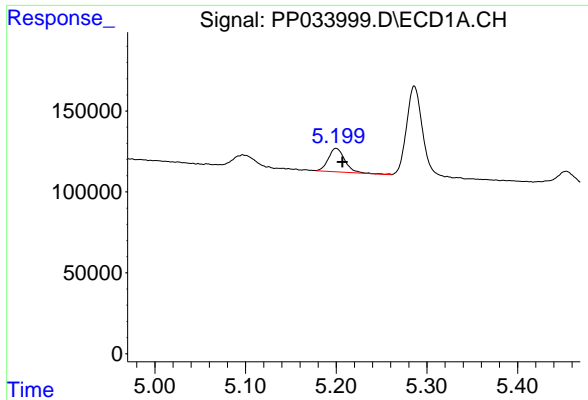
#8 AR-1221-1

R.T.: 5.097 min  
 Delta R.T.: -0.012 min  
 Response: 121920  
 Conc: 132.12 ng/ml



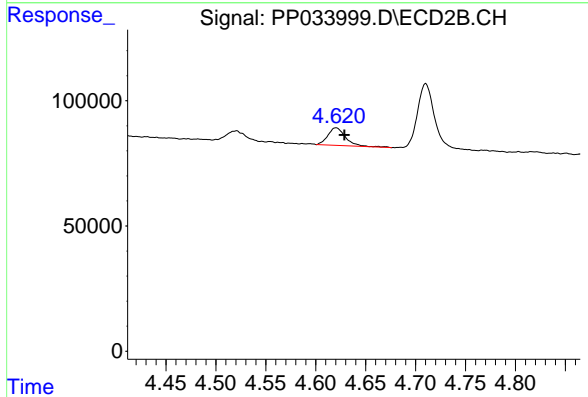
#8 AR-1221-1

R.T.: 4.520 min  
 Delta R.T.: -0.009 min  
 Response: 60258  
 Conc: 141.51 ng/ml

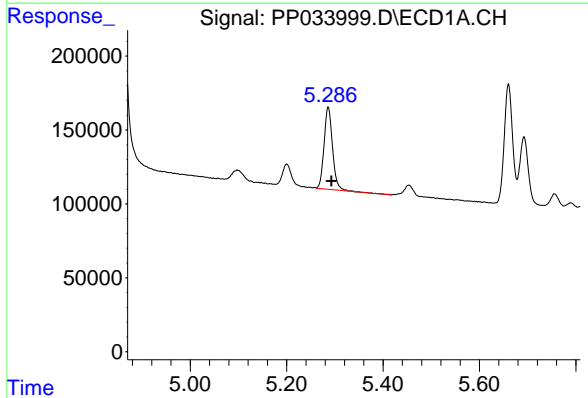


#9 AR-1221-2  
 R.T.: 5.200 min  
 Delta R.T.: -0.007 min  
 Response: 185740  
 Conc: 264.33 ng/ml

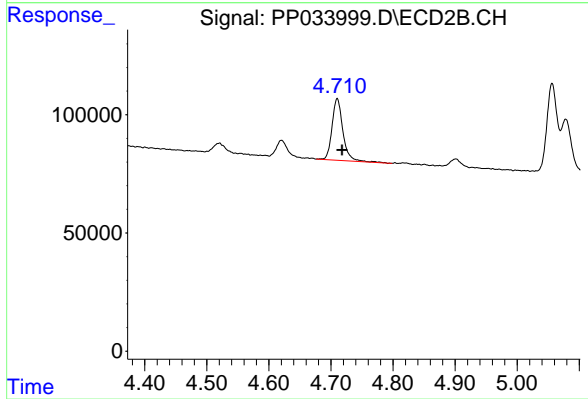
Instrument :  
 ECD\_P  
 ClientSampleId :



#9 AR-1221-2  
 R.T.: 4.620 min  
 Delta R.T.: -0.009 min  
 Response: 87726  
 Conc: 271.11 ng/ml

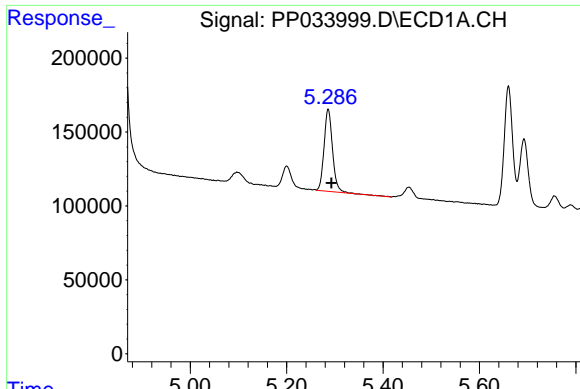


#10 AR-1221-3  
 R.T.: 5.286 min  
 Delta R.T.: -0.007 min  
 Response: 676770  
 Conc: 321.53 ng/ml



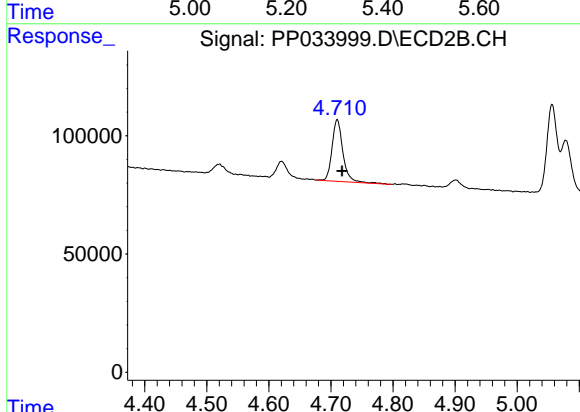
#10 AR-1221-3  
 R.T.: 4.710 min  
 Delta R.T.: -0.008 min  
 Response: 318266  
 Conc: 324.69 ng/ml



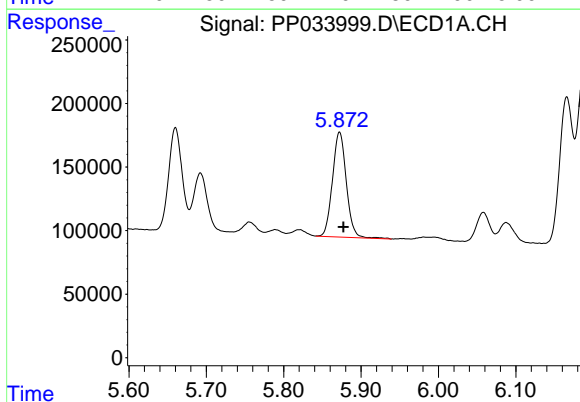


#11 AR-1232-1  
 R.T.: 5.286 min  
 Delta R.T.: -0.006 min  
 Response: 676770  
 Conc: 391.17 ng/ml

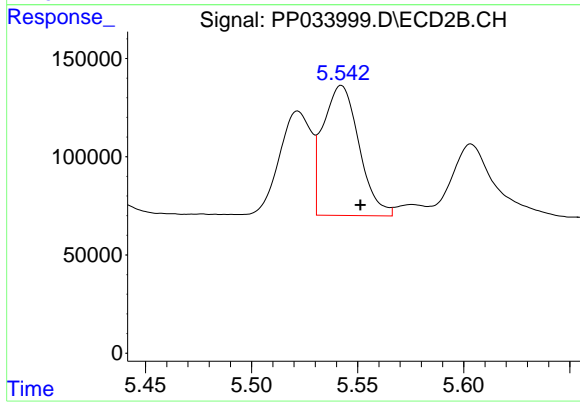
Instrument :  
 ECD\_P  
 ClientSampleId :



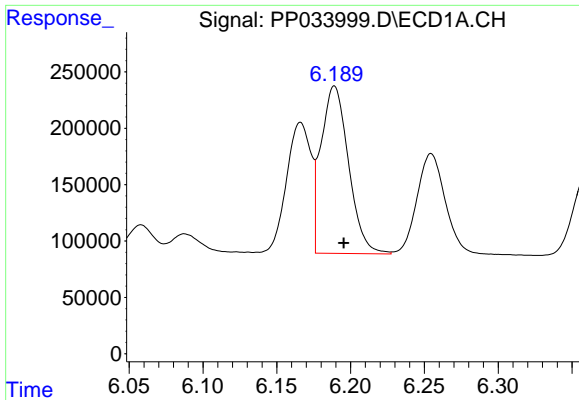
#11 AR-1232-1  
 R.T.: 4.710 min  
 Delta R.T.: -0.008 min  
 Response: 318266  
 Conc: 391.76 ng/ml



#12 AR-1232-2  
 R.T.: 5.872 min  
 Delta R.T.: -0.005 min  
 Response: 1030126  
 Conc: 1124.79 ng/ml

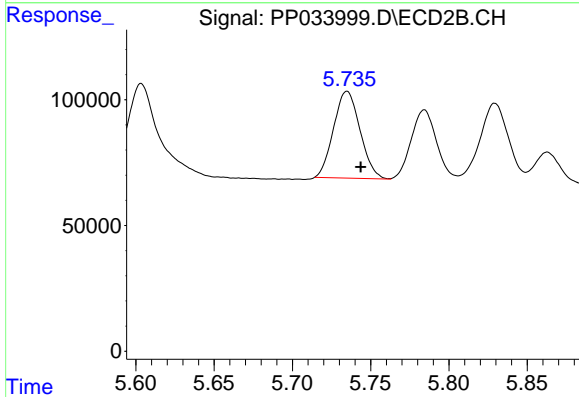


#12 AR-1232-2  
 R.T.: 5.542 min  
 Delta R.T.: -0.009 min  
 Response: 782956  
 Conc: 1080.40 ng/ml

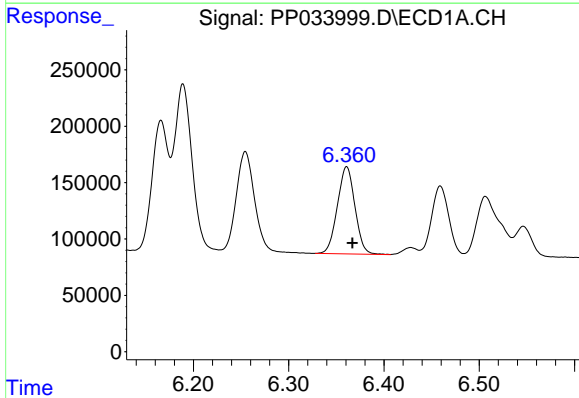


#13 AR-1232-3  
 R.T.: 6.189 min  
 Delta R.T.: -0.006 min  
 Response: 1928345  
 Conc: 1140.86 ng/ml

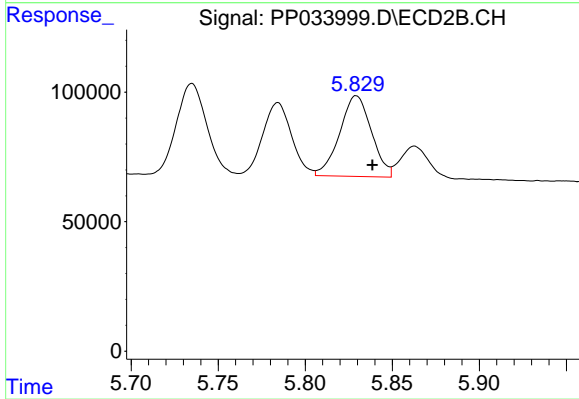
Instrument :  
 ECD\_P  
 ClientSampleId :



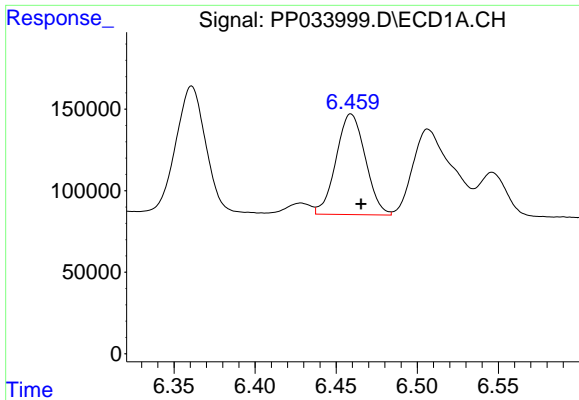
#13 AR-1232-3  
 R.T.: 5.735 min  
 Delta R.T.: -0.009 min  
 Response: 406319  
 Conc: 1056.58 ng/ml



#14 AR-1232-4  
 R.T.: 6.361 min  
 Delta R.T.: -0.006 min  
 Response: 991337  
 Conc: 1160.48 ng/ml



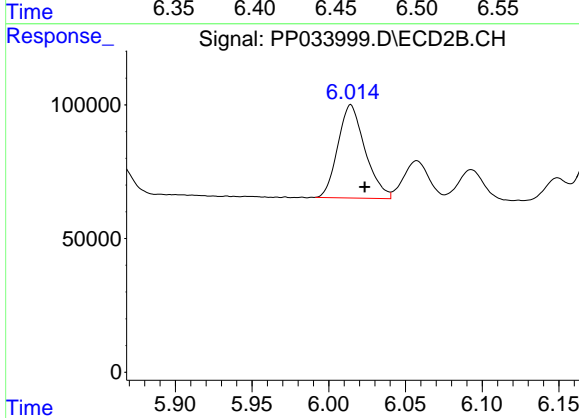
#14 AR-1232-4  
 R.T.: 5.829 min  
 Delta R.T.: -0.009 min  
 Response: 395879  
 Conc: 1186.94 ng/ml



#15 AR-1232-5

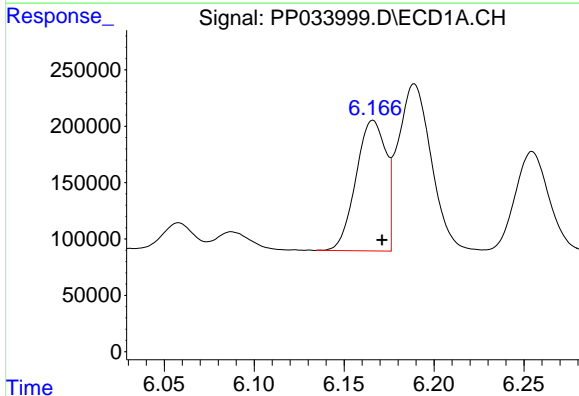
R.T.: 6.459 min  
 Delta R.T.: -0.006 min  
 Response: 775693  
 Conc: 1307.57 ng/ml

Instrument :  
 ECD\_P  
 ClientSampleId :



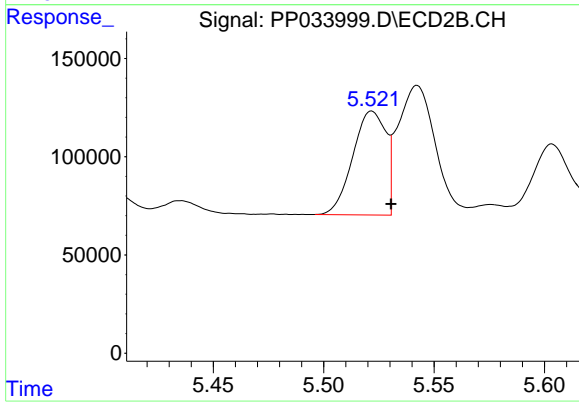
#15 AR-1232-5

R.T.: 6.014 min  
 Delta R.T.: -0.009 min  
 Response: 431745  
 Conc: 1191.35 ng/ml



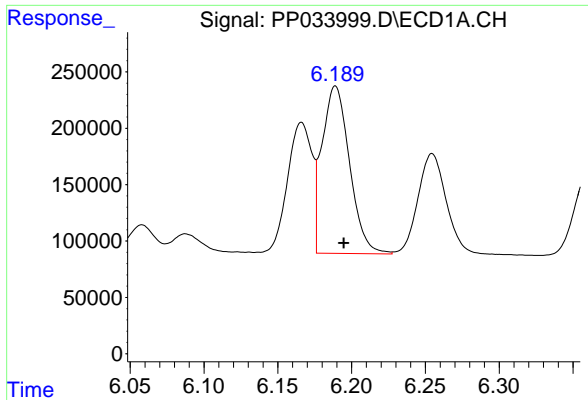
#16 AR-1242-1

R.T.: 6.166 min  
 Delta R.T.: -0.005 min  
 Response: 1335932  
 Conc: 658.40 ng/ml



#16 AR-1242-1

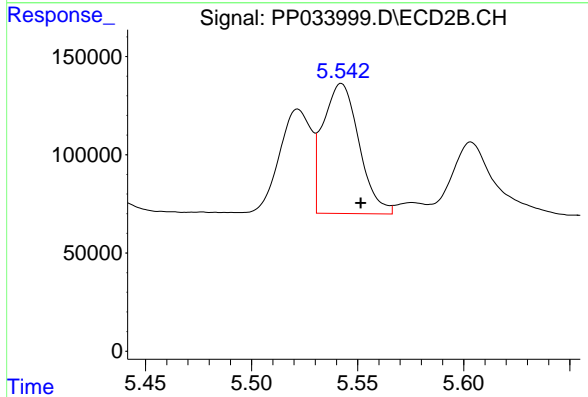
R.T.: 5.522 min  
 Delta R.T.: -0.009 min  
 Response: 550853  
 Conc: 623.83 ng/ml



#17 AR-1242-2

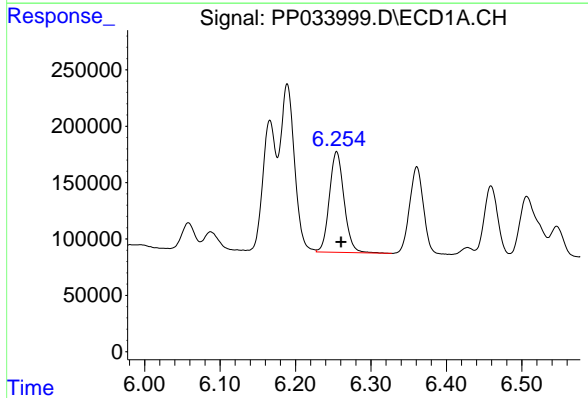
R.T.: 6.189 min  
 Delta R.T.: -0.006 min  
 Response: 1928345  
 Conc: 635.09 ng/ml

Instrument :  
 ECD\_P  
 ClientSampleId :



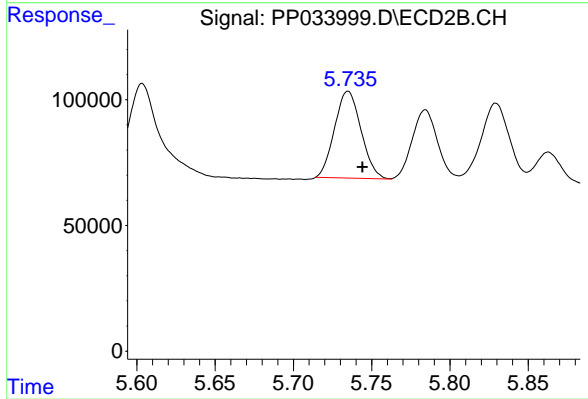
#17 AR-1242-2

R.T.: 5.542 min  
 Delta R.T.: -0.009 min  
 Response: 782956  
 Conc: 624.25 ng/ml



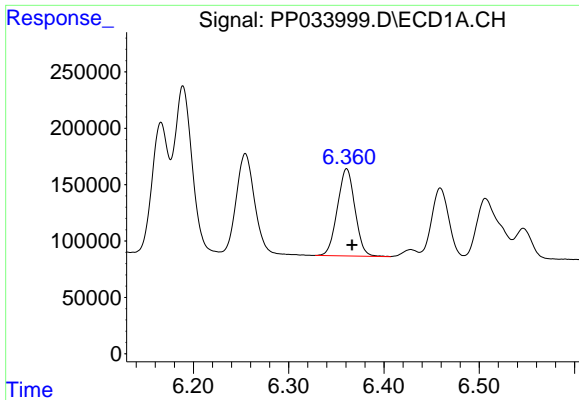
#18 AR-1242-3

R.T.: 6.255 min  
 Delta R.T.: -0.006 min  
 Response: 1205119  
 Conc: 630.74 ng/ml



#18 AR-1242-3

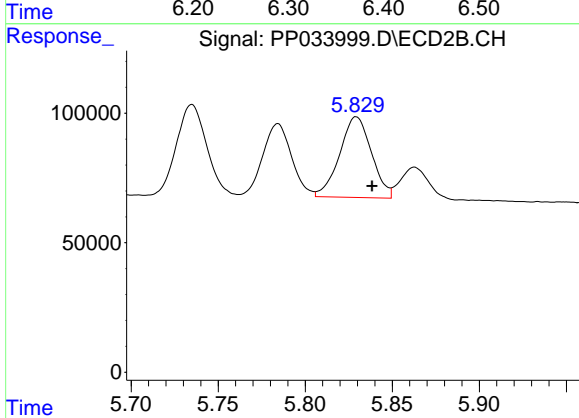
R.T.: 5.735 min  
 Delta R.T.: -0.009 min  
 Response: 406319  
 Conc: 575.42 ng/ml



#19 AR-1242-4

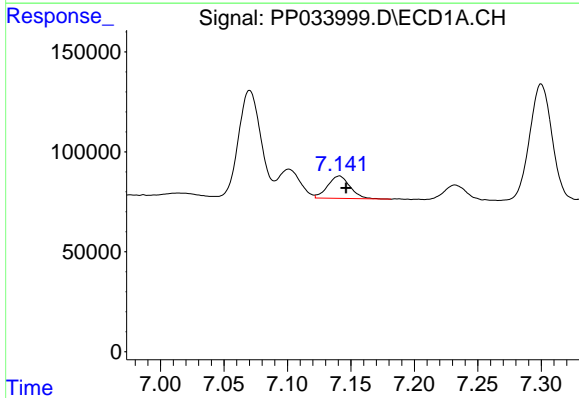
R.T.: 6.361 min  
 Delta R.T.: -0.006 min  
 Response: 991337  
 Conc: 637.37 ng/ml

Instrument :  
 ECD\_P  
 ClientSampleId :



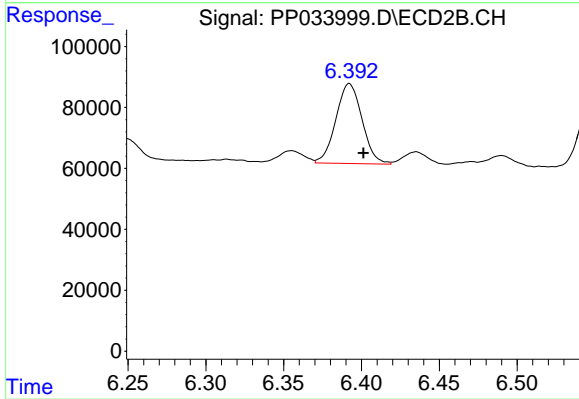
#19 AR-1242-4

R.T.: 5.829 min  
 Delta R.T.: -0.009 min  
 Response: 395879  
 Conc: 578.20 ng/ml



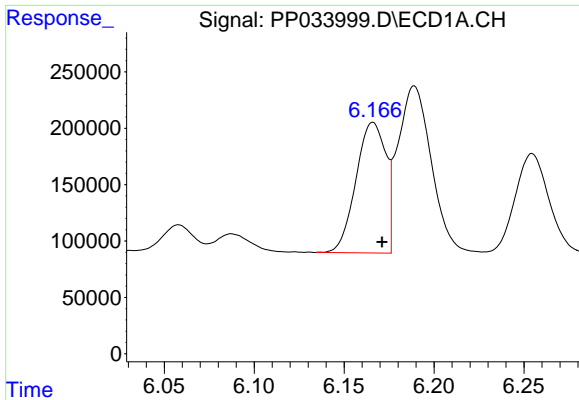
#20 AR-1242-5

R.T.: 7.141 min  
 Delta R.T.: -0.005 min  
 Response: 137198  
 Conc: 85.47 ng/ml



#20 AR-1242-5

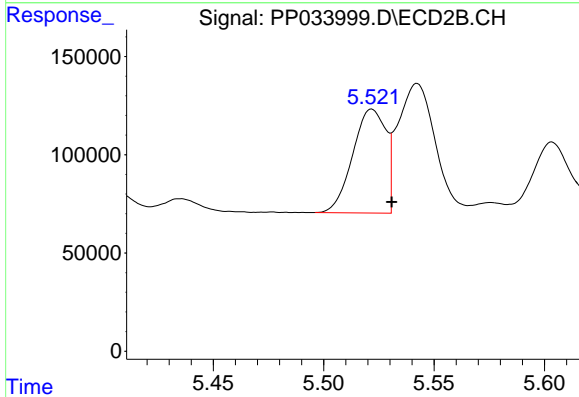
R.T.: 6.392 min  
 Delta R.T.: -0.009 min  
 Response: 306992  
 Conc: 384.03 ng/ml



#21 AR-1248-1

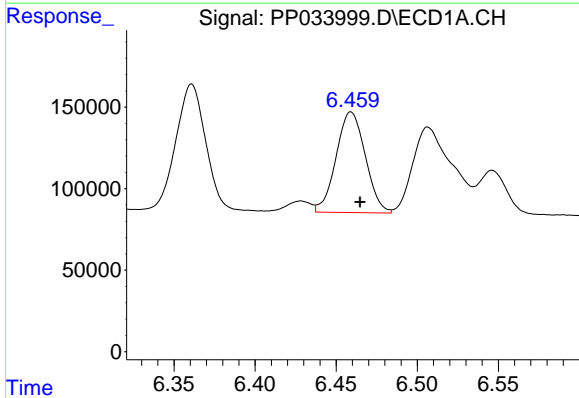
R.T.: 6.166 min  
 Delta R.T.: -0.005 min  
 Response: 1335932  
 Conc: 856.39 ng/ml

Instrument :  
 ECD\_P  
 ClientSampleId :



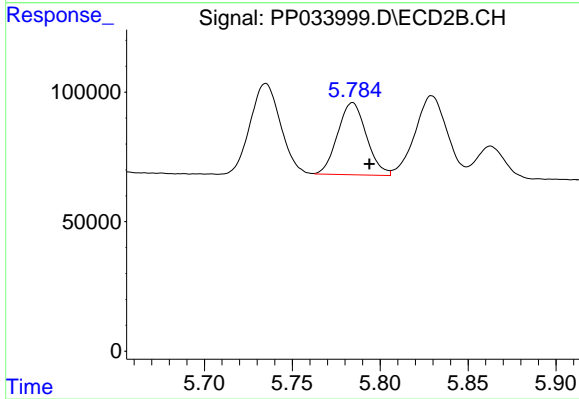
#21 AR-1248-1

R.T.: 5.522 min  
 Delta R.T.: -0.009 min  
 Response: 550853  
 Conc: 809.24 ng/ml



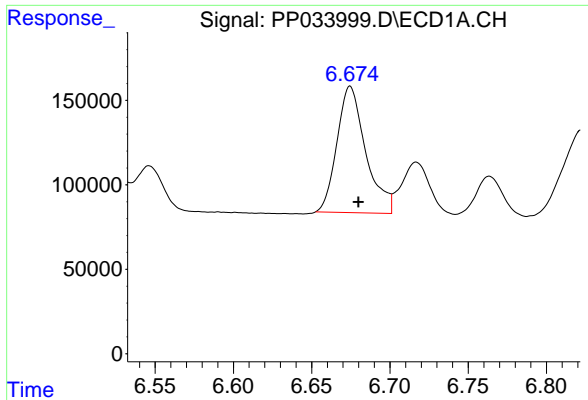
#22 AR-1248-2

R.T.: 6.459 min  
 Delta R.T.: -0.006 min  
 Response: 775693  
 Conc: 364.40 ng/ml



#22 AR-1248-2

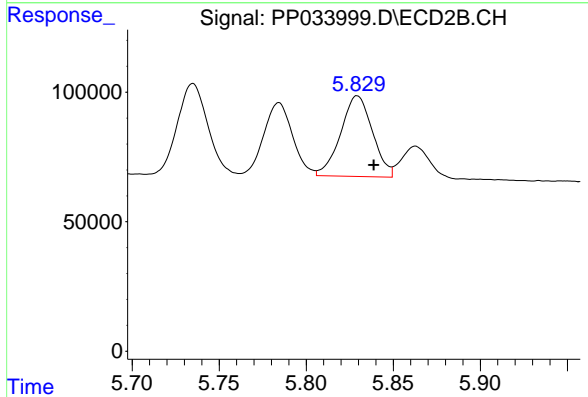
R.T.: 5.784 min  
 Delta R.T.: -0.010 min  
 Response: 316821  
 Conc: 337.66 ng/ml



#23 AR-1248-3

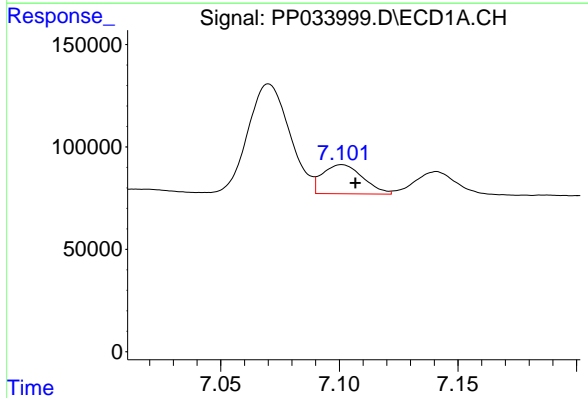
R.T.: 6.675 min  
 Delta R.T.: -0.005 min  
 Response: 954536  
 Conc: 370.32 ng/ml

Instrument :  
 ECD\_P  
 ClientSampleId :



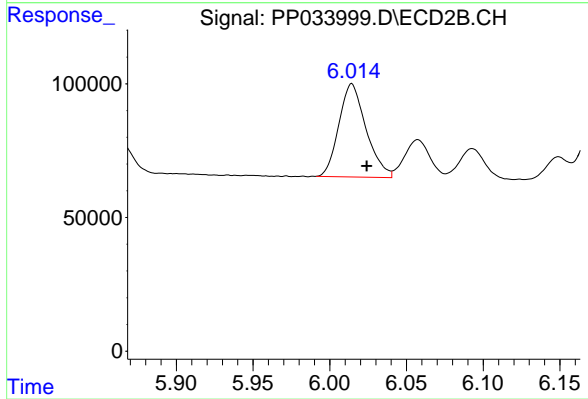
#23 AR-1248-3

R.T.: 5.829 min  
 Delta R.T.: -0.009 min  
 Response: 395879  
 Conc: 393.15 ng/ml



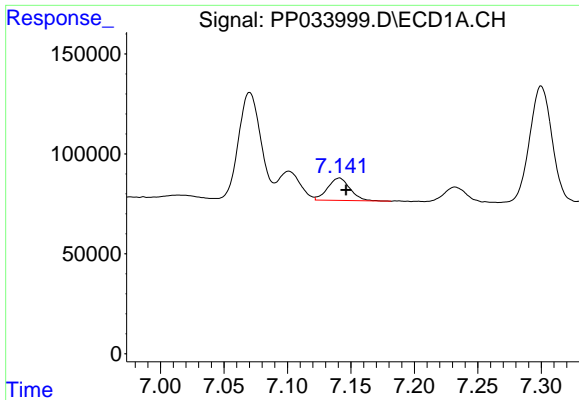
#24 AR-1248-4

R.T.: 7.101 min  
 Delta R.T.: -0.006 min  
 Response: 167892  
 Conc: 60.69 ng/ml



#24 AR-1248-4

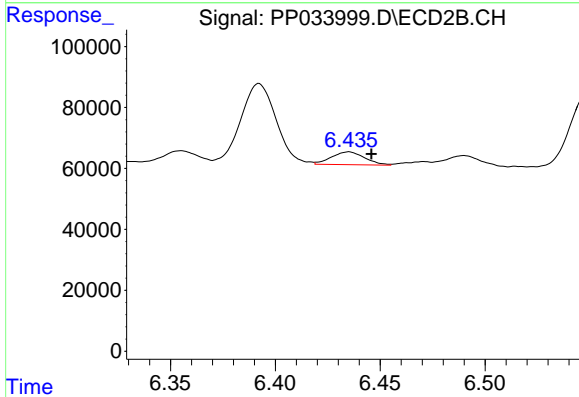
R.T.: 6.014 min  
 Delta R.T.: -0.010 min  
 Response: 431745  
 Conc: 368.76 ng/ml



#25 AR-1248-5

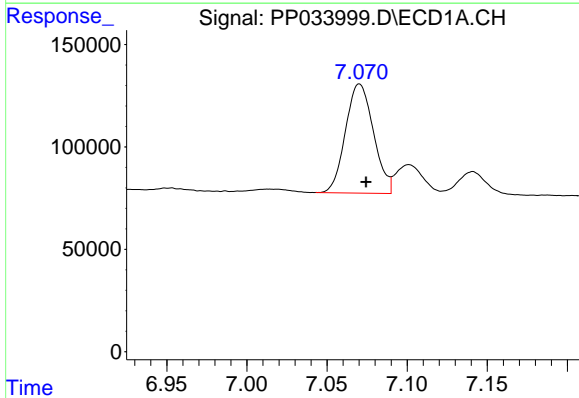
R.T.: 7.141 min  
 Delta R.T.: -0.005 min  
 Response: 137198  
 Conc: 50.30 ng/ml

Instrument :  
 ECD\_P  
 ClientSampleId :



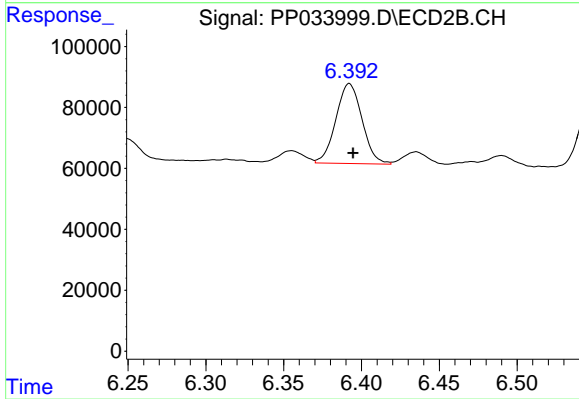
#25 AR-1248-5

R.T.: 6.435 min  
 Delta R.T.: -0.011 min  
 Response: 46700  
 Conc: 43.36 ng/ml



#26 AR-1254-1

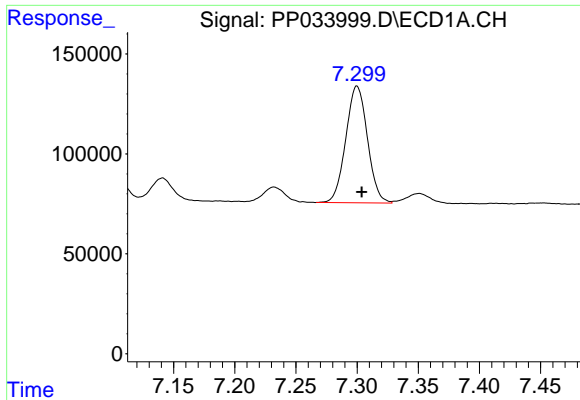
R.T.: 7.070 min  
 Delta R.T.: -0.004 min  
 Response: 648093  
 Conc: 221.85 ng/ml



#26 AR-1254-1

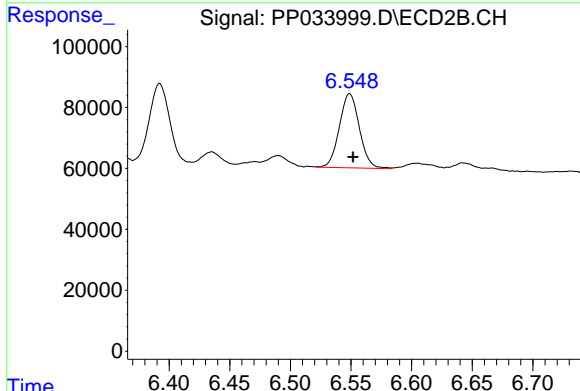
R.T.: 6.392 min  
 Delta R.T.: -0.002 min  
 Response: 306992  
 Conc: 188.30 ng/ml



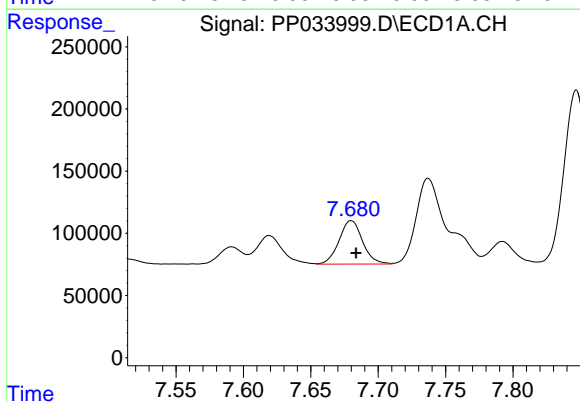


#27 AR-1254-2  
 R.T.: 7.300 min  
 Delta R.T.: -0.004 min  
 Response: 720313  
 Conc: 158.41 ng/ml

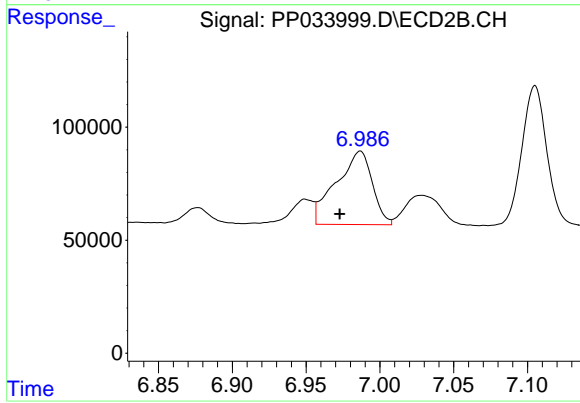
Instrument :  
 ECD\_P  
 ClientSampleId :



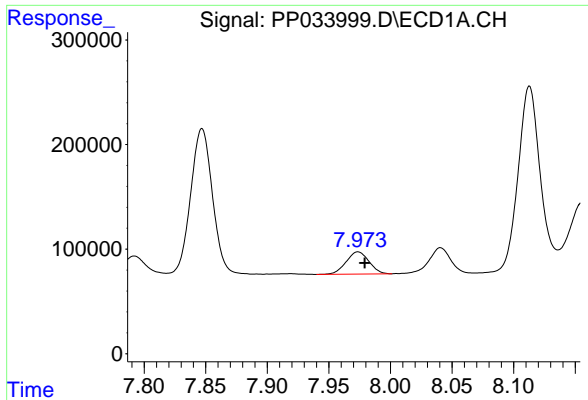
#27 AR-1254-2  
 R.T.: 6.549 min  
 Delta R.T.: -0.003 min  
 Response: 279703  
 Conc: 195.84 ng/ml



#28 AR-1254-3  
 R.T.: 7.680 min  
 Delta R.T.: -0.003 min  
 Response: 426290  
 Conc: 86.22 ng/ml

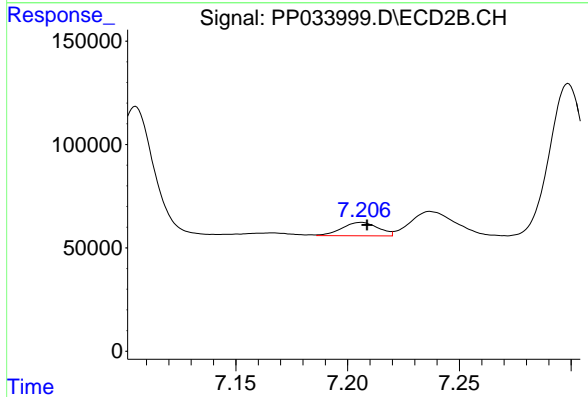


#28 AR-1254-3  
 R.T.: 6.987 min  
 Delta R.T.: 0.014 min  
 Response: 553925  
 Conc: 242.01 ng/ml

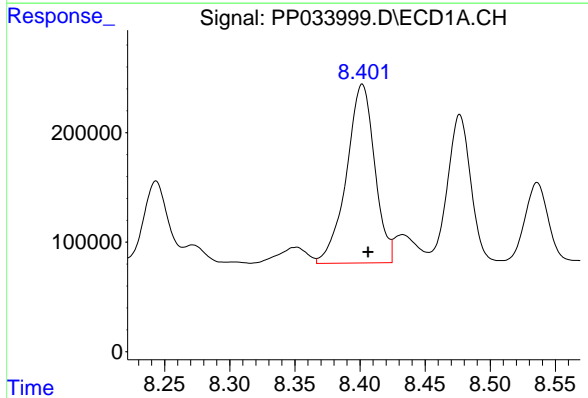


#29 AR-1254-4  
 R.T.: 7.974 min  
 Delta R.T.: -0.005 min  
 Response: 273928  
 Conc: 79.86 ng/ml

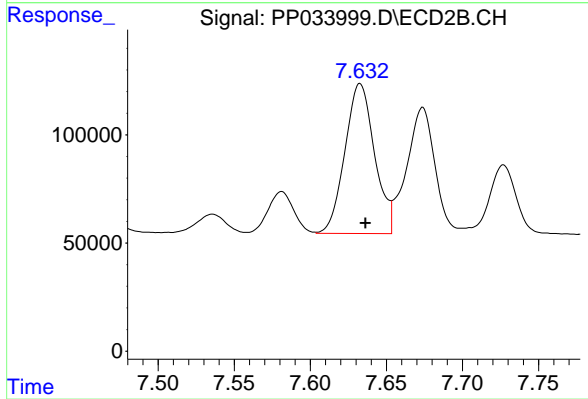
Instrument :  
 ECD\_P  
 ClientSampled :



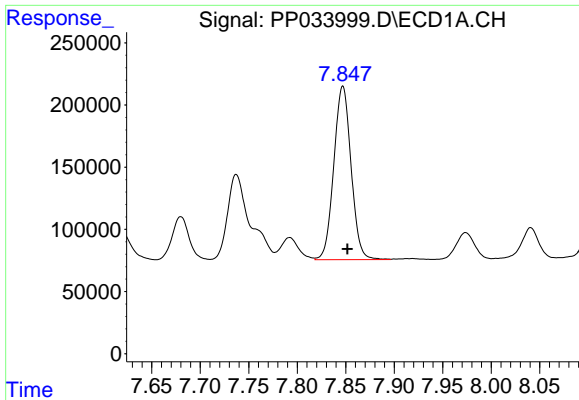
#29 AR-1254-4  
 R.T.: 7.206 min  
 Delta R.T.: -0.003 min  
 Response: 72559  
 Conc: 57.09 ng/ml



#30 AR-1254-5  
 R.T.: 8.402 min  
 Delta R.T.: -0.004 min  
 Response: 2458131  
 Conc: 624.50 ng/ml

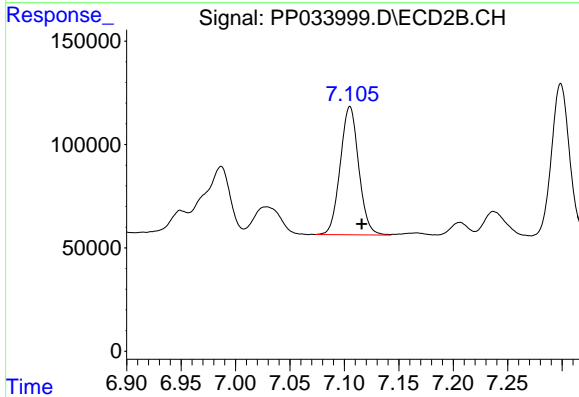


#30 AR-1254-5  
 R.T.: 7.633 min  
 Delta R.T.: -0.004 min  
 Response: 938532  
 Conc: 498.29 ng/ml

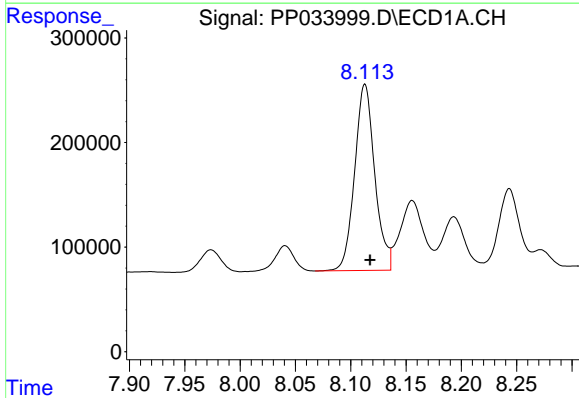


#31 AR-1260-1  
 R.T.: 7.847 min  
 Delta R.T.: -0.005 min  
 Response: 1729817  
 Conc: 503.72 ng/ml

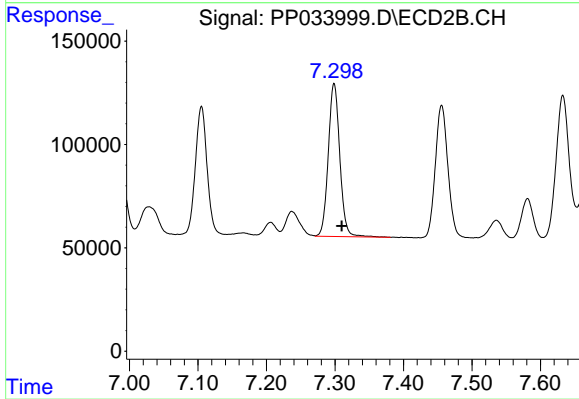
Instrument :  
 ECD\_P  
 ClientSampled :



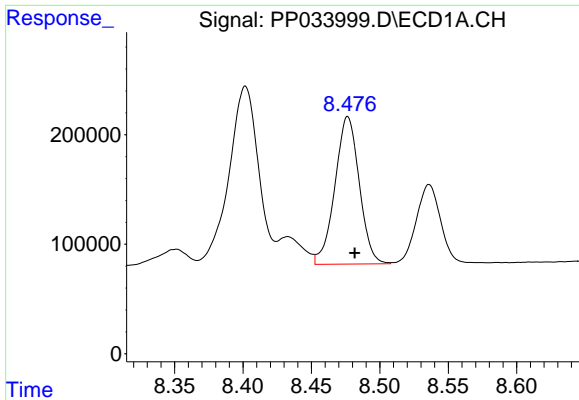
#31 AR-1260-1  
 R.T.: 7.105 min  
 Delta R.T.: -0.011 min  
 Response: 734557  
 Conc: 480.65 ng/ml



#32 AR-1260-2  
 R.T.: 8.113 min  
 Delta R.T.: -0.005 min  
 Response: 2251541  
 Conc: 546.86 ng/ml



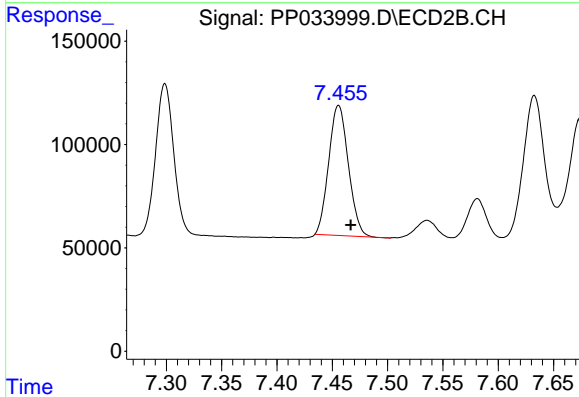
#32 AR-1260-2  
 R.T.: 7.299 min  
 Delta R.T.: -0.011 min  
 Response: 867090  
 Conc: 479.39 ng/ml



#33 AR-1260-3

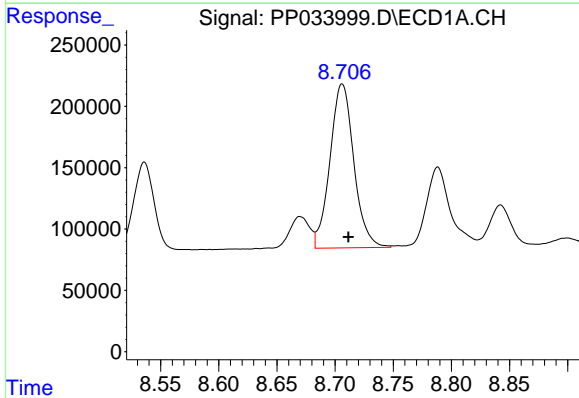
R.T.: 8.477 min  
 Delta R.T.: -0.005 min  
 Response: 1669743  
 Conc: 515.87 ng/ml

Instrument :  
 ECD\_P  
 ClientSampled :



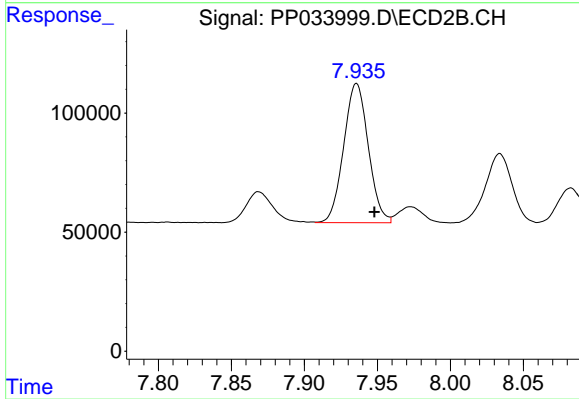
#33 AR-1260-3

R.T.: 7.456 min  
 Delta R.T.: -0.011 min  
 Response: 778887  
 Conc: 459.90 ng/ml



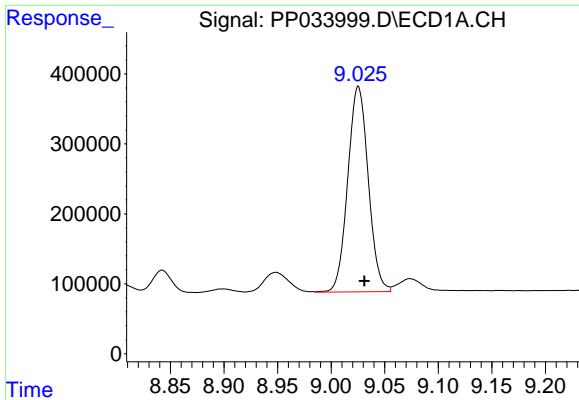
#34 AR-1260-4

R.T.: 8.706 min  
 Delta R.T.: -0.005 min  
 Response: 1909248  
 Conc: 515.43 ng/ml



#34 AR-1260-4

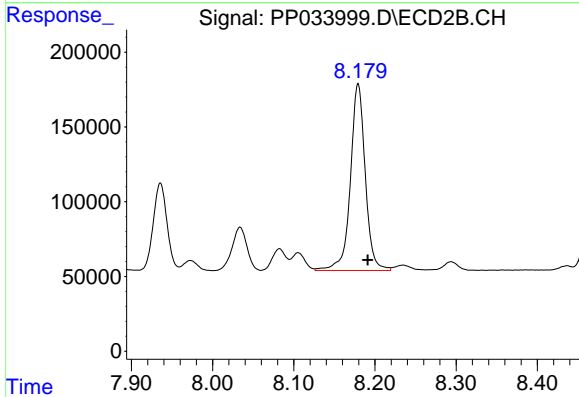
R.T.: 7.936 min  
 Delta R.T.: -0.012 min  
 Response: 686636  
 Conc: 466.88 ng/ml



#35 AR-1260-5

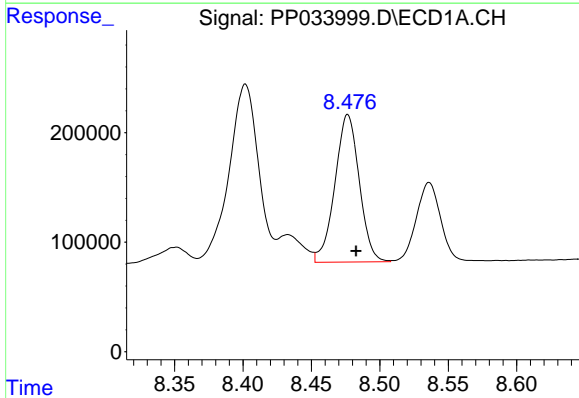
R.T.: 9.025 min  
 Delta R.T.: -0.005 min  
 Response: 3912591  
 Conc: 505.75 ng/ml

Instrument :  
 ECD\_P  
 ClientSampled :



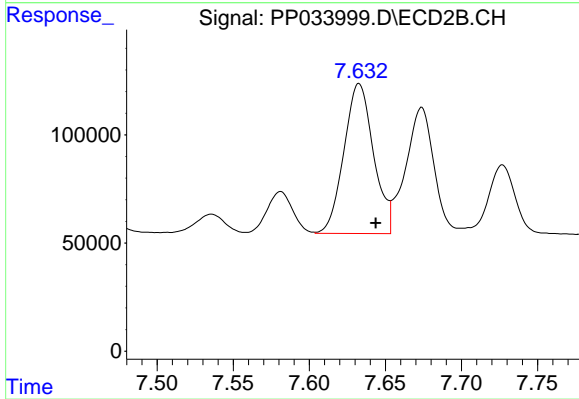
#35 AR-1260-5

R.T.: 8.179 min  
 Delta R.T.: -0.012 min  
 Response: 1590379  
 Conc: 489.15 ng/ml



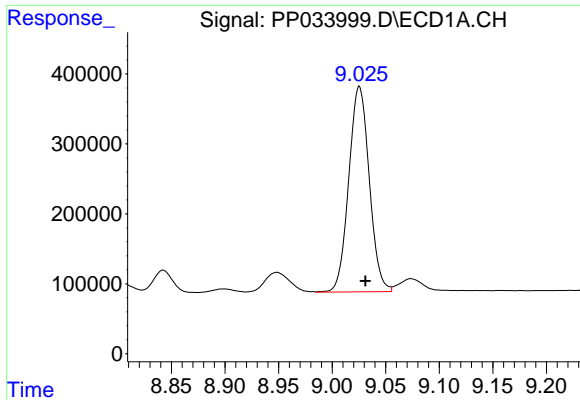
#36 AR-1262-1

R.T.: 8.477 min  
 Delta R.T.: -0.006 min  
 Response: 1669743  
 Conc: 350.92 ng/ml



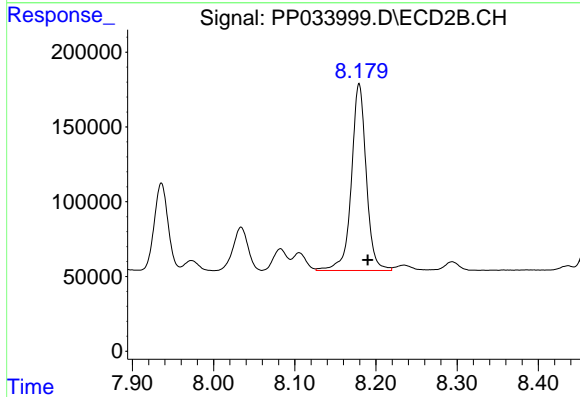
#36 AR-1262-1

R.T.: 7.633 min  
 Delta R.T.: -0.011 min  
 Response: 938532  
 Conc: 882.90 ng/ml

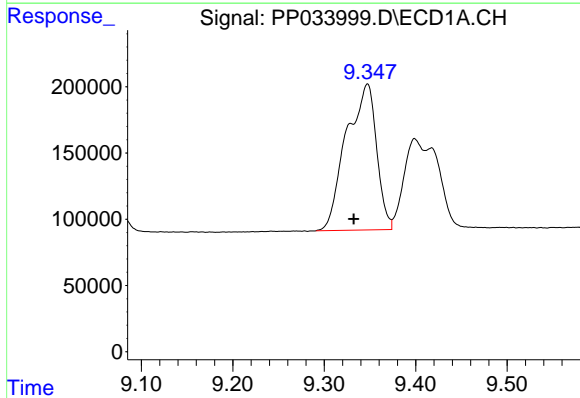


#37 AR-1262-2  
 R.T.: 9.025 min  
 Delta R.T.: -0.006 min  
 Response: 3912591  
 Conc: 452.67 ng/ml

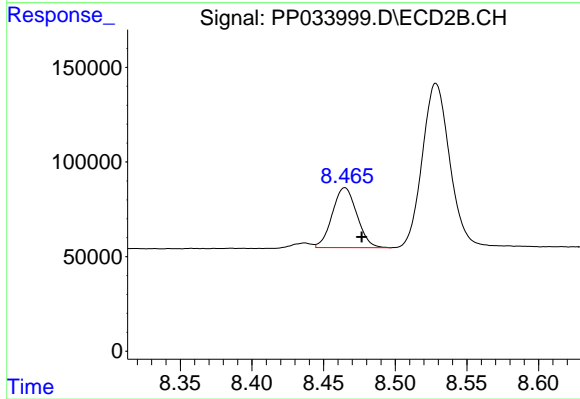
Instrument :  
 ECD\_P  
 ClientSampleId :



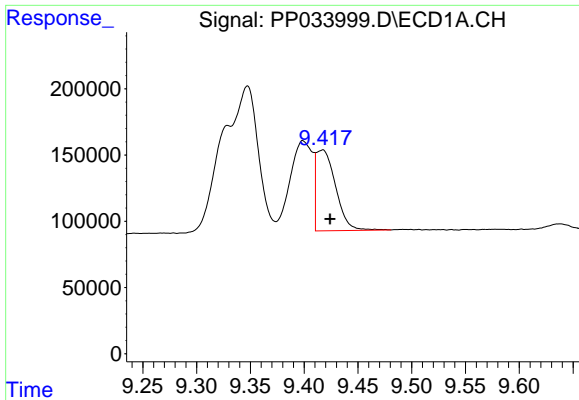
#37 AR-1262-2  
 R.T.: 8.179 min  
 Delta R.T.: -0.011 min  
 Response: 1590379  
 Conc: 477.28 ng/ml



#38 AR-1262-3  
 R.T.: 9.347 min  
 Delta R.T.: 0.015 min  
 Response: 2530328  
 Conc: 416.94 ng/ml



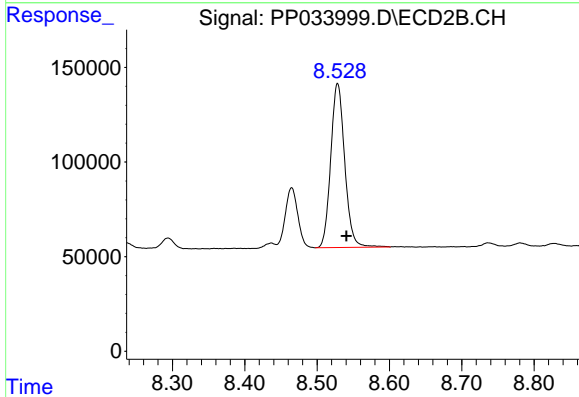
#38 AR-1262-3  
 R.T.: 8.465 min  
 Delta R.T.: -0.012 min  
 Response: 378327  
 Conc: 264.92 ng/ml



#39 AR-1262-4

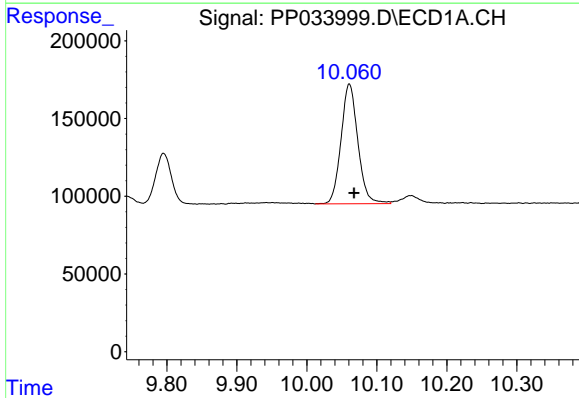
R.T.: 9.417 min  
 Delta R.T.: -0.007 min  
 Response: 772598  
 Conc: 155.87 ng/ml

Instrument :  
 ECD\_P  
 ClientSampleId :



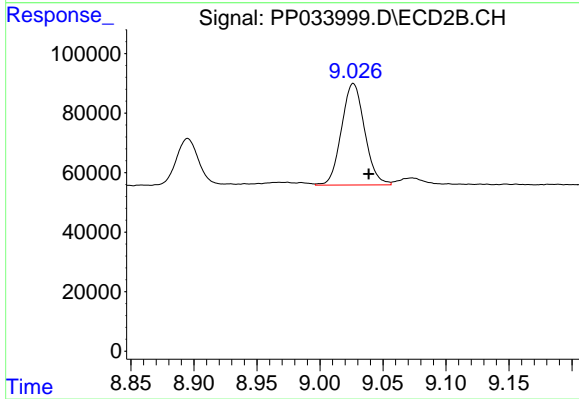
#39 AR-1262-4

R.T.: 8.528 min  
 Delta R.T.: -0.012 min  
 Response: 1163400  
 Conc: 461.45 ng/ml



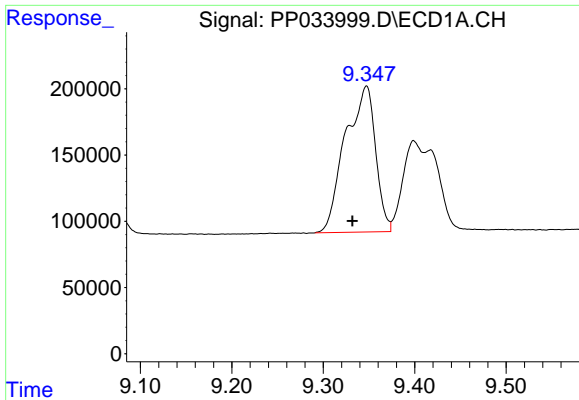
#40 AR-1262-5

R.T.: 10.061 min  
 Delta R.T.: -0.007 min  
 Response: 1287513  
 Conc: 391.18 ng/ml



#40 AR-1262-5

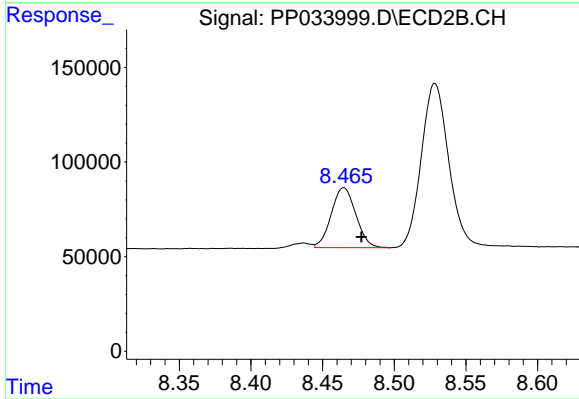
R.T.: 9.027 min  
 Delta R.T.: -0.012 min  
 Response: 436846  
 Conc: 383.24 ng/ml



#41 AR-1268-1

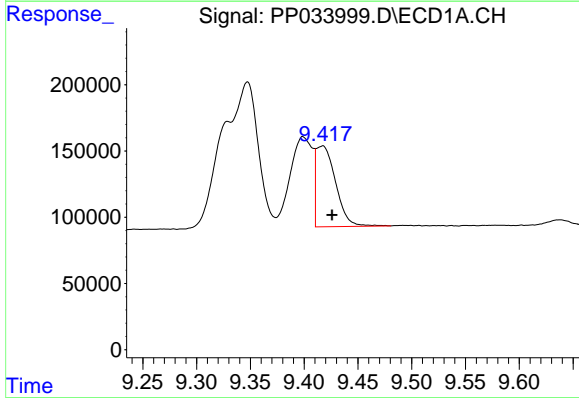
R.T.: 9.347 min  
 Delta R.T.: 0.016 min  
 Response: 2530328  
 Conc: 243.01 ng/ml

Instrument :  
 ECD\_P  
 ClientSampleId :



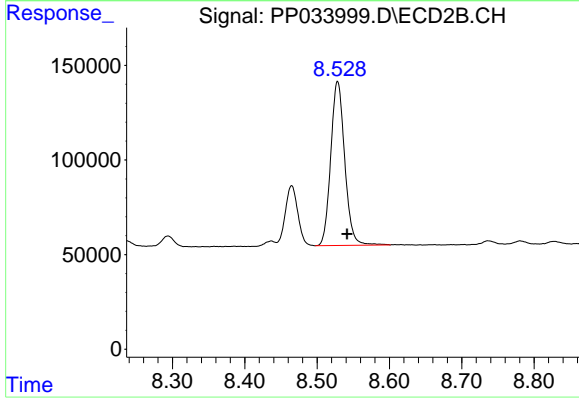
#41 AR-1268-1

R.T.: 8.465 min  
 Delta R.T.: -0.012 min  
 Response: 378327  
 Conc: 98.91 ng/ml



#42 AR-1268-2

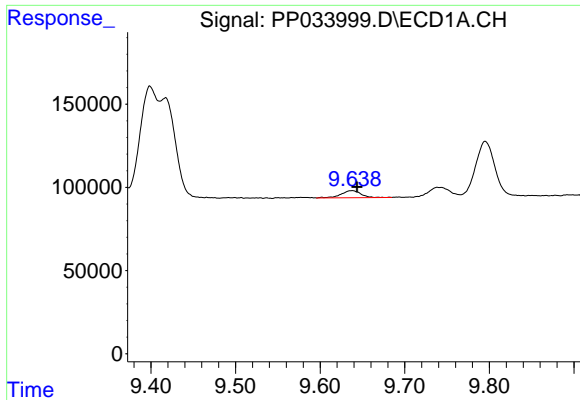
R.T.: 9.417 min  
 Delta R.T.: -0.009 min  
 Response: 772598  
 Conc: 76.44 ng/ml



#42 AR-1268-2

R.T.: 8.528 min  
 Delta R.T.: -0.013 min  
 Response: 1163400  
 Conc: 325.61 ng/ml

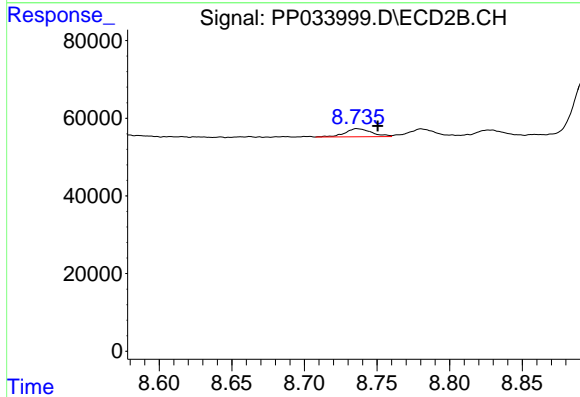




#43 AR-1268-3

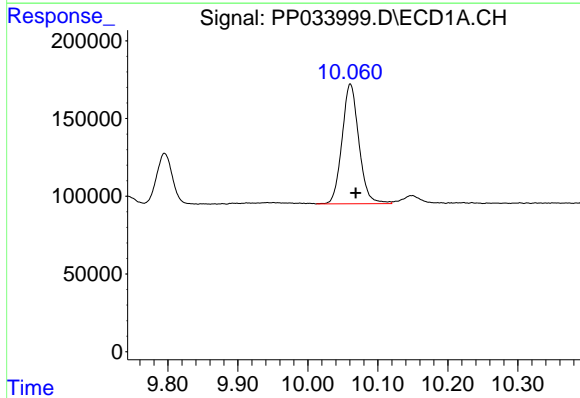
R.T.: 9.638 min  
 Delta R.T.: -0.006 min  
 Response: 67312  
 Conc: 7.58 ng/ml

Instrument :  
 ECD\_P  
 ClientSampleId :



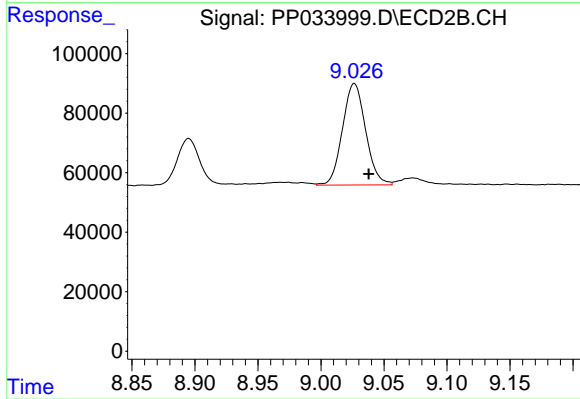
#43 AR-1268-3

R.T.: 8.736 min  
 Delta R.T.: -0.014 min  
 Response: 26537  
 Conc: 8.54 ng/ml



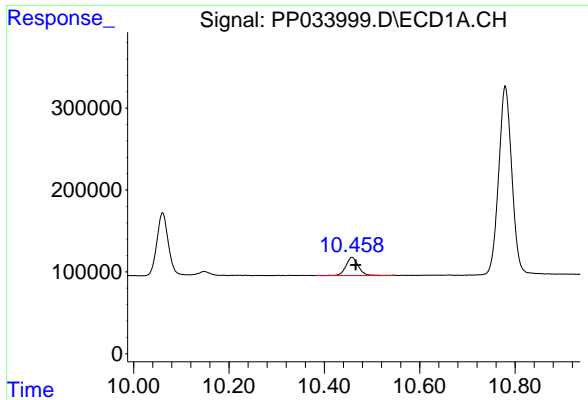
#44 AR-1268-4

R.T.: 10.061 min  
 Delta R.T.: -0.008 min  
 Response: 1287513  
 Conc: 369.71 ng/ml



#44 AR-1268-4

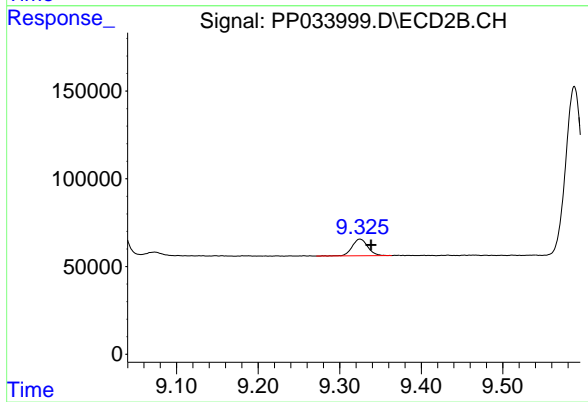
R.T.: 9.027 min  
 Delta R.T.: -0.011 min  
 Response: 436846  
 Conc: 359.93 ng/ml



#45 AR-1268-5

R.T.: 10.458 min  
Delta R.T.: -0.008 min  
Response: 404358  
Conc: 13.68 ng/ml

Instrument :  
ECD\_P  
ClientSampleId :



#45 AR-1268-5

R.T.: 9.325 min  
Delta R.T.: -0.014 min  
Response: 127985  
Conc: 14.00 ng/ml