

Data Path : Z:\pestpcbsrv\HPCHEM1\ECD_P\Data\PP031521\
 Data File : PP034005.D
 Signal(s) : Signal #1: ECD1A.CH Signal #2: ECD2B.CH
 Acq On : 15 Mar 2021 14:40
 Operator : DD\AJ
 Sample : M1661-04 5X
 Misc :
 ALS Vial : 17 Sample Multiplier: 1

Instrument :
 ECD_P
 ClientSampled :

Integration File signal 1: autoint1.e
 Integration File signal 2: autoint2.e
 Quant Time: Mar 15 16:10:57 2021
 Quant Method : Z:\pestpcbsrv\HPCHEM1\ECD_P\methods\PP030921.M
 Quant Title : GC EXTRACTABLES
 QLast Update : Fri Mar 12 12:21:17 2021
 Response via : Initial Calibration
 Integrator: ChemStation 6890 Scale Mode: Small noise peaks clipped

Volume Inj. : 2 µl
 Signal #1 Phase : ZB-MR1 Signal #2 Phase: ZB-MR2
 Signal #1 Info : 30Mx0.32mmx 0.50µ Signal #2 Info : 30M x 0.32mm x 0.25µm

Compound	RT#1	RT#2	Resp#1	Resp#2	ng/ml	ng/ml
System Monitoring Compounds						
1) SA Tetrachlo...	4.853	4.265	451240	206675	5.215	5.087
2) SA Decachlor...	10.781	9.587	364685	123514	4.318	4.629
Target Compounds						
6) L1 AR-1016-4	0.000	5.784	0	86824	N.D.	120.237 #
7) L1 AR-1016-5	6.675	6.014	101139	41571	49.895	44.961
12) L3 AR-1232-2	5.860f	0.000	52761	0	57.609	N.D. #
14) L3 AR-1232-4	0.000	5.828	0	52422	N.D.	157.173 #
15) L3 AR-1232-5	6.460	6.014	177922	41571	299.919	114.710 #
19) L4 AR-1242-4	0.000	5.828	0	52422	N.D.	76.564 #
20) L4 AR-1242-5	7.144	6.392	409673	612849	255.209	766.647 #
22) L5 AR-1248-2	6.460	5.784	177922	86824	83.584	92.537
23) L5 AR-1248-3	6.675	5.828	101139	52422	39.238	52.060 #
24) L5 AR-1248-4	7.102	6.014	421844	41571	152.478	35.506 #
25) L5 AR-1248-5	7.144	6.434	409673	100006	150.210	92.848 #
26) L6 AR-1254-1	7.072	6.392	1120890	612849	383.697	375.907
27) L6 AR-1254-2	7.301	6.549	3193631	1134288	702.344	794.202
28) L6 AR-1254-3	7.681	6.970	5005618	2431201	1012.414	1062.212
29) L6 AR-1254-4	7.977	7.206	4760399	1706448	1387.857	1342.576
30) L6 AR-1254-5	8.404	7.634	11280324	5761060	2865.822	3058.666
31) L7 AR-1260-1	7.848	7.105	3403935	1616887	991.220	1057.984
32) L7 AR-1260-2	8.113	7.299	5726022	2082983	1390.743	1151.612
33) L7 AR-1260-3	8.464f	7.455	1743523	1608781	538.661	949.926 #
34) L7 AR-1260-4	8.699	7.936	4570647	443892	1233.918	301.823 #
35) L7 AR-1260-5	9.026	8.179	2541331	1002257	328.498	308.263
36) L8 AR-1262-1	8.464f	7.634	1743523	5761060	366.431	5419.572 #
37) L8 AR-1262-2	9.026	8.179	2541331	1002257	294.019	300.781
38) L8 AR-1262-3	9.349f	8.466	1880246	29814	309.819	20.876 #
39) L8 AR-1262-4	9.397f	8.526	548649	936422	110.688	371.422 #
40) L8 AR-1262-5	10.063	9.026	210716	82406	64.021	72.294
41) L9 AR-1268-1	9.349f	8.466	1880246	29814	180.579	7.795 #
42) L9 AR-1268-2	9.397f	8.526f	548649	936422	54.285	262.088 #
43) L9 AR-1268-3	9.623f	0.000	51103	0	5.754	N.D. #
44) L9 AR-1268-4	10.063	9.026	210716	82406	60.507	67.897
45) L9 AR-1268-5	10.461	9.325	78971	28433	2.671	3.110

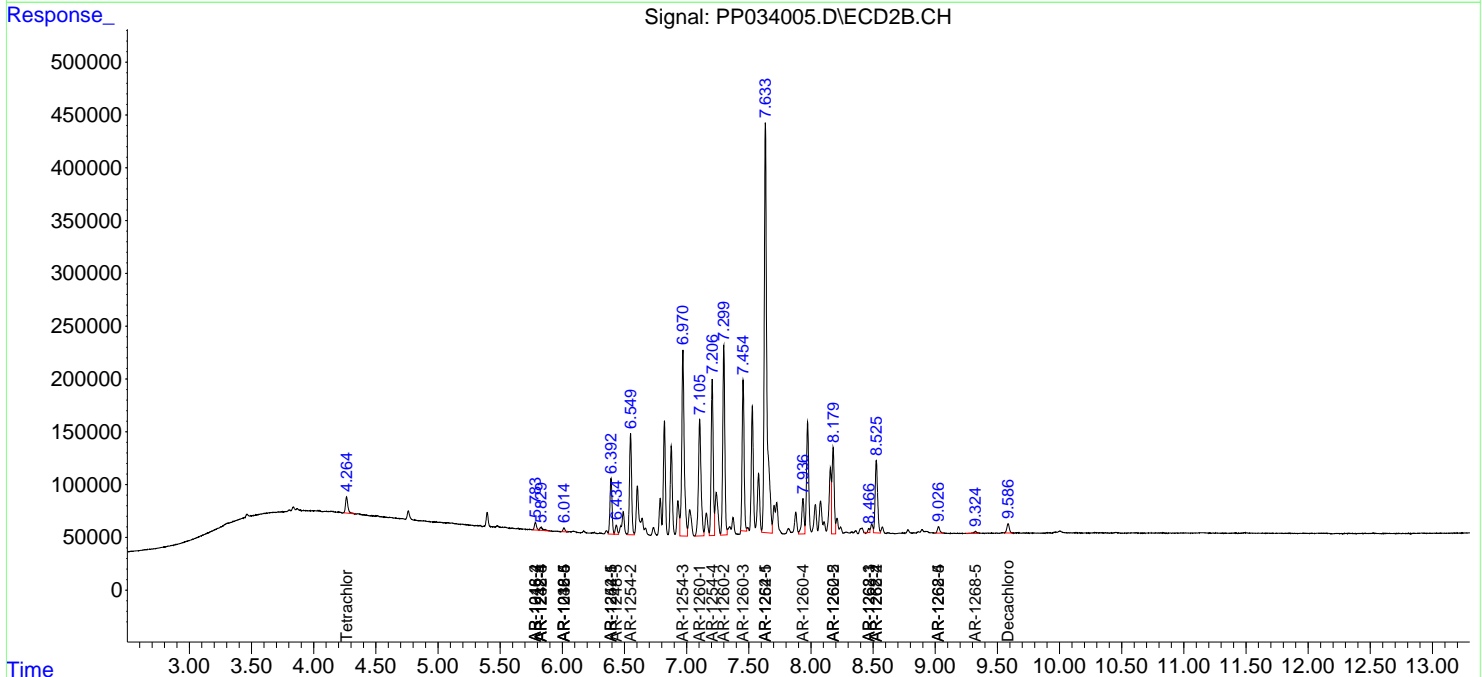
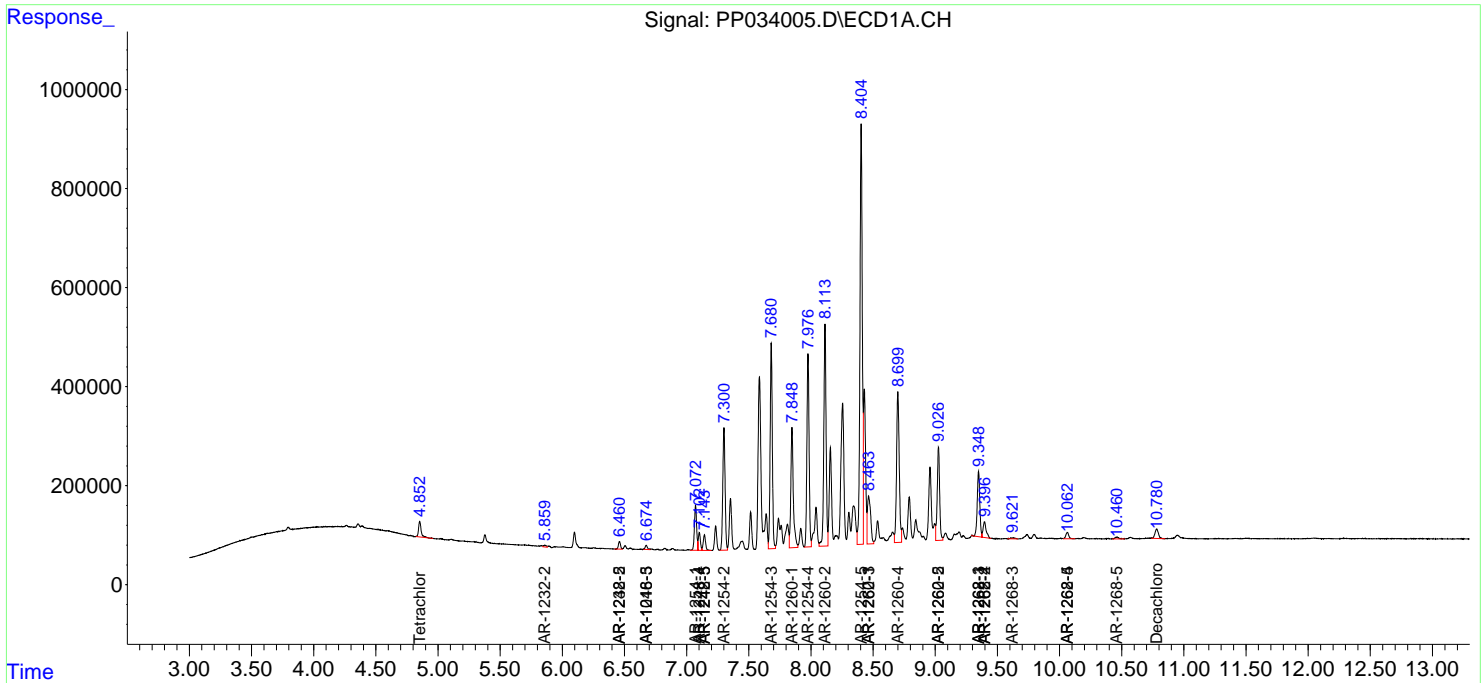
(f)=RT Delta > 1/2 Window (#)=Amounts differ by > 25% (m)=manual int.

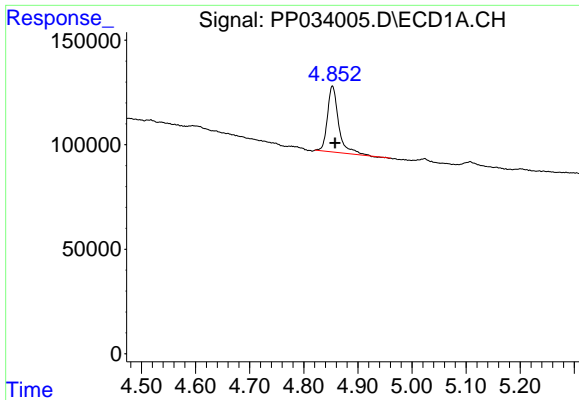
Data Path : Z:\pestpcbsrv\HPCHEM1\ECD_P\Data\PP031521\
 Data File : PP034005.D
 Signal(s) : Signal #1: ECD1A.CH Signal #2: ECD2B.CH
 Acq On : 15 Mar 2021 14:40
 Operator : DD\AJ
 Sample : M1661-04 5X
 Misc :
 ALS Vial : 17 Sample Multiplier: 1

Instrument :
 ECD_P
 ClientSampled :

Integration File signal 1: autoint1.e
 Integration File signal 2: autoint2.e
 Quant Time: Mar 15 16:10:57 2021
 Quant Method : Z:\pestpcbsrv\HPCHEM1\ECD_P\methods\PP030921.M
 Quant Title : GC EXTRACTABLES
 QLast Update : Fri Mar 12 12:21:17 2021
 Response via : Initial Calibration
 Integrator: ChemStation 6890 Scale Mode: Small noise peaks clipped

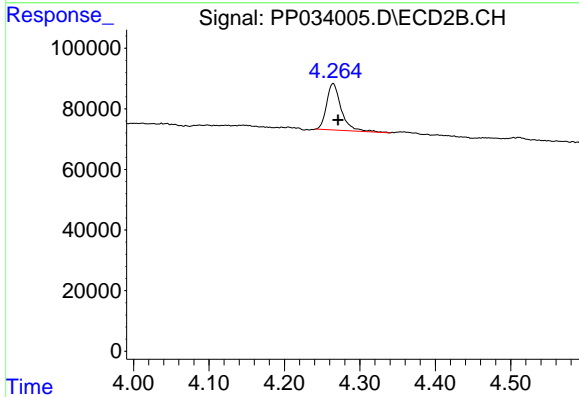
Volume Inj. : 2 µl
 Signal #1 Phase : ZB-MR1 Signal #2 Phase: ZB-MR2
 Signal #1 Info : 30Mx0.32mmx 0.50µ Signal #2 Info : 30M x 0.32mm x 0.25µm



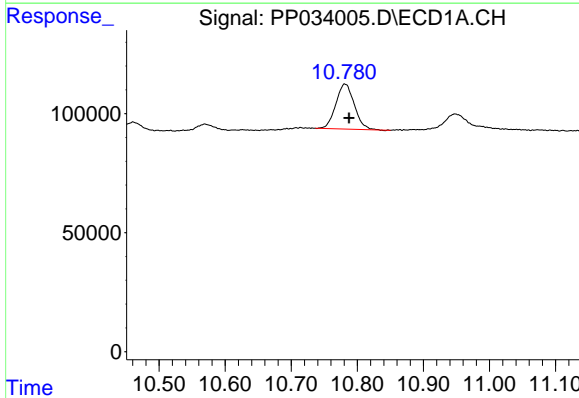


#1 Tetrachloro-m-xylene
 R.T.: 4.853 min
 Delta R.T.: -0.005 min
 Response: 451240
 Conc: 5.22 ng/ml

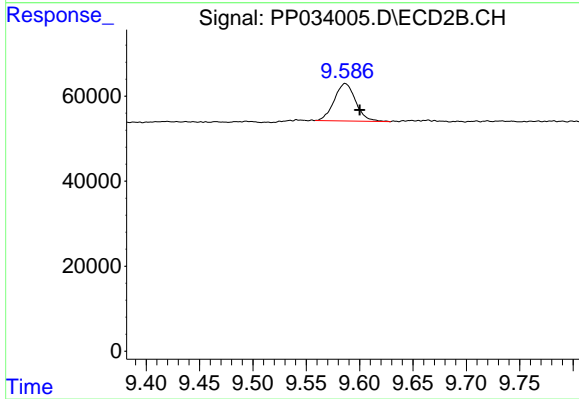
Instrument :
 ECD_P
 ClientSampleId :



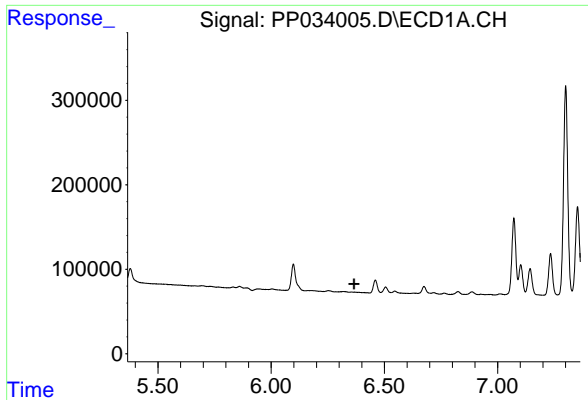
#1 Tetrachloro-m-xylene
 R.T.: 4.265 min
 Delta R.T.: -0.007 min
 Response: 206675
 Conc: 5.09 ng/ml



#2 Decachlorobiphenyl
 R.T.: 10.781 min
 Delta R.T.: -0.007 min
 Response: 364685
 Conc: 4.32 ng/ml



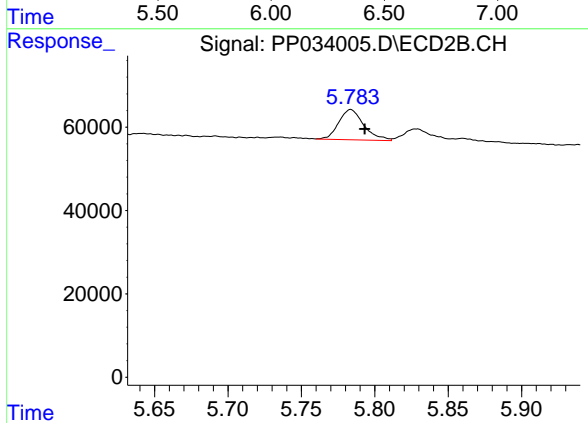
#2 Decachlorobiphenyl
 R.T.: 9.587 min
 Delta R.T.: -0.013 min
 Response: 123514
 Conc: 4.63 ng/ml



#6 AR-1016-4

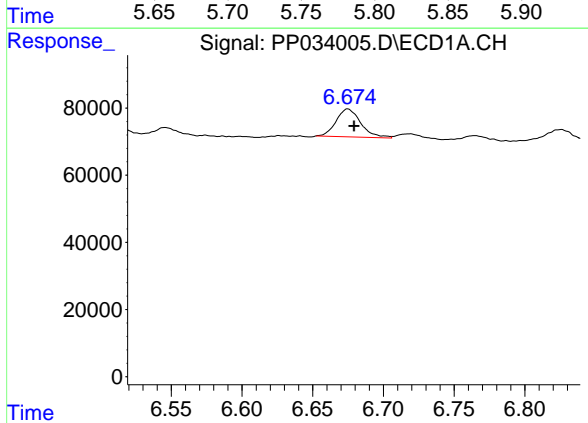
R.T.: 0.000 min
 Exp R.T.: 6.366 min
 Response: 0
 Conc: N.D.

Instrument :
 ECD_P
 ClientSampled :



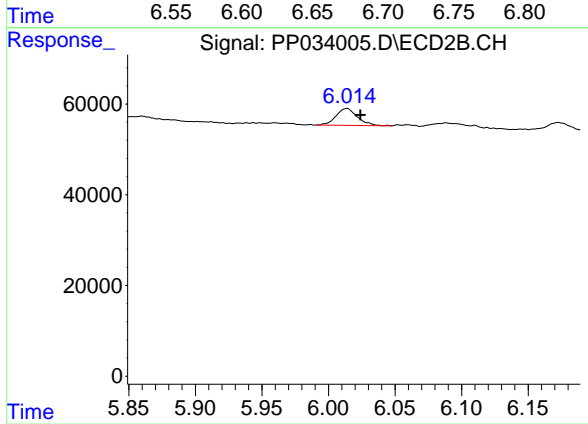
#6 AR-1016-4

R.T.: 5.784 min
 Delta R.T.: -0.009 min
 Response: 86824
 Conc: 120.24 ng/ml



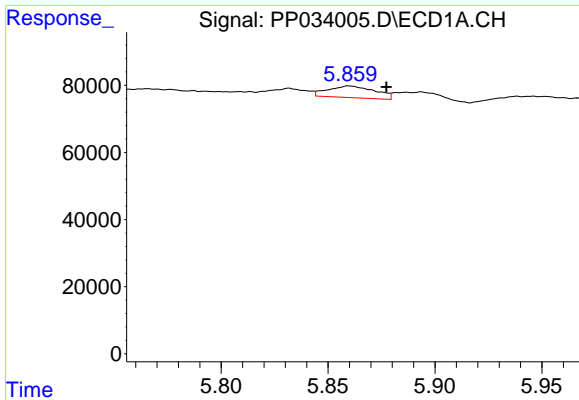
#7 AR-1016-5

R.T.: 6.675 min
 Delta R.T.: -0.004 min
 Response: 101139
 Conc: 49.90 ng/ml



#7 AR-1016-5

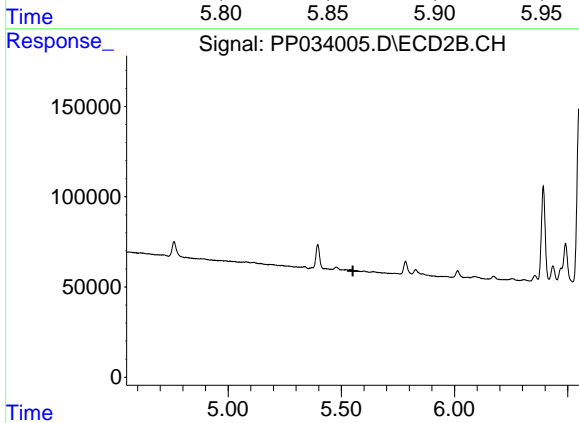
R.T.: 6.014 min
 Delta R.T.: -0.010 min
 Response: 41571
 Conc: 44.96 ng/ml



#12 AR-1232-2

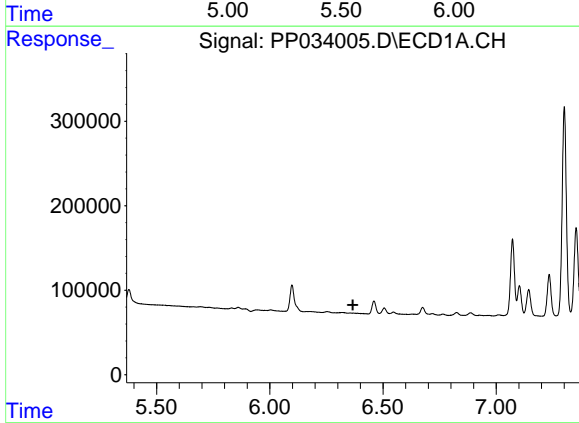
R.T.: 5.860 min
 Delta R.T.: -0.017 min
 Response: 52761
 Conc: 57.61 ng/ml

Instrument :
 ECD_P
 ClientSampled :



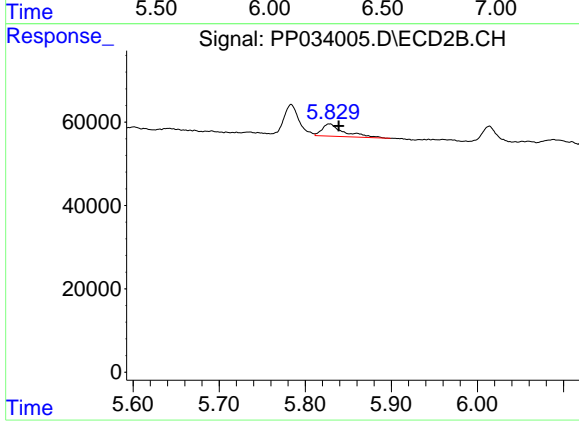
#12 AR-1232-2

R.T.: 0.000 min
 Exp R.T. : 5.551 min
 Response: 0
 Conc: N.D.



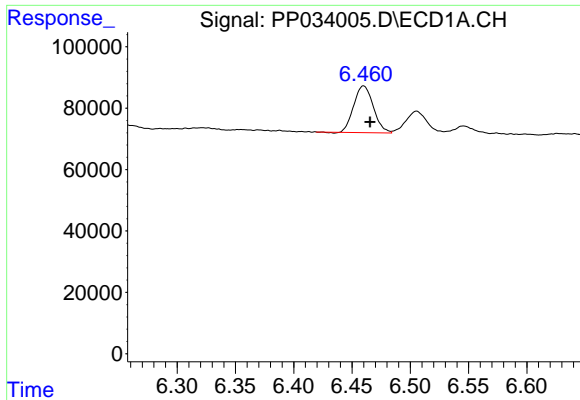
#14 AR-1232-4

R.T.: 0.000 min
 Exp R.T. : 6.367 min
 Response: 0
 Conc: N.D.



#14 AR-1232-4

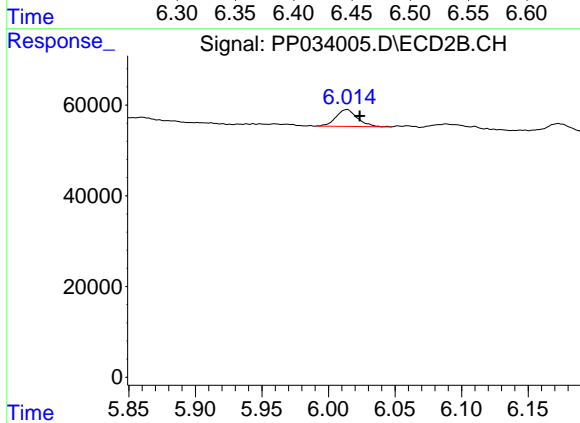
R.T.: 5.828 min
 Delta R.T.: -0.010 min
 Response: 52422
 Conc: 157.17 ng/ml



#15 AR-1232-5

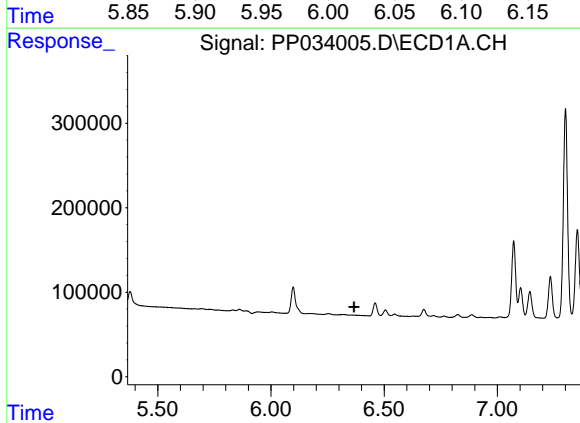
R.T.: 6.460 min
 Delta R.T.: -0.005 min
 Response: 177922
 Conc: 299.92 ng/ml

Instrument :
 ECD_P
 ClientSampled :



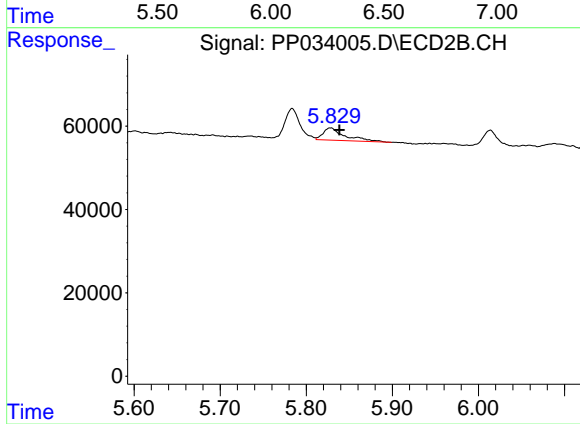
#15 AR-1232-5

R.T.: 6.014 min
 Delta R.T.: -0.010 min
 Response: 41571
 Conc: 114.71 ng/ml



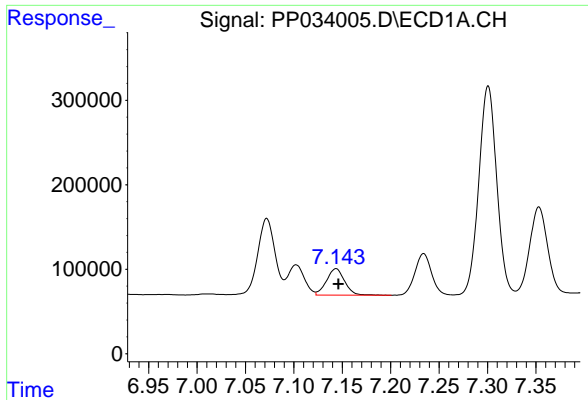
#19 AR-1242-4

R.T.: 0.000 min
 Exp R.T. : 6.367 min
 Response: 0
 Conc: N.D.



#19 AR-1242-4

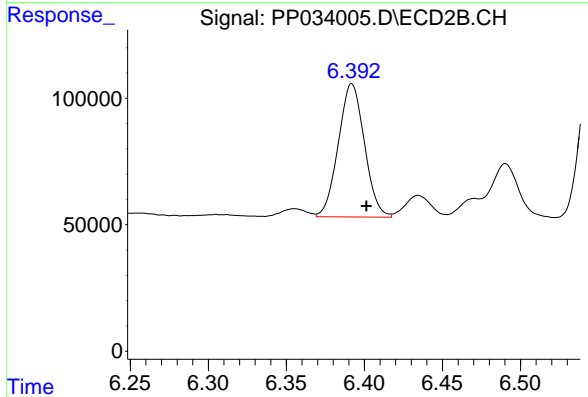
R.T.: 5.828 min
 Delta R.T.: -0.010 min
 Response: 52422
 Conc: 76.56 ng/ml



#20 AR-1242-5

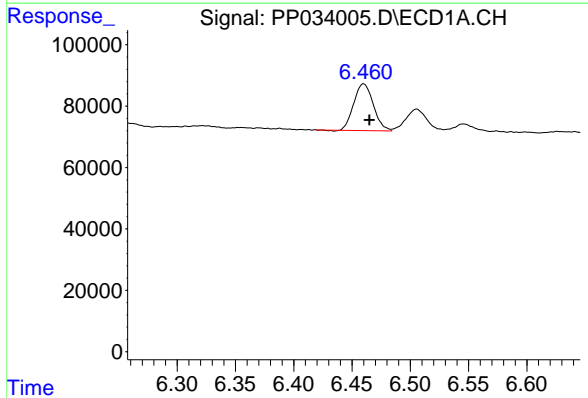
R.T.: 7.144 min
 Delta R.T.: -0.002 min
 Response: 409673
 Conc: 255.21 ng/ml

Instrument :
 ECD_P
 ClientSampled :



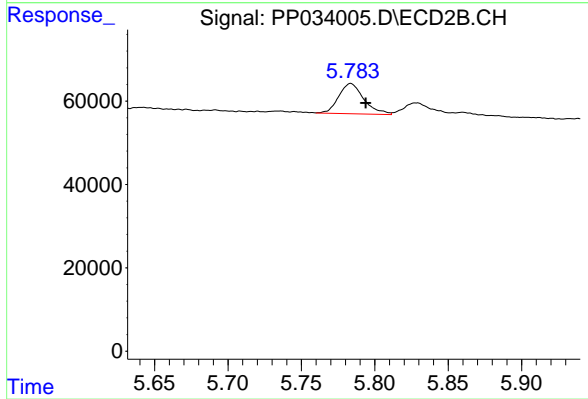
#20 AR-1242-5

R.T.: 6.392 min
 Delta R.T.: -0.009 min
 Response: 612849
 Conc: 766.65 ng/ml



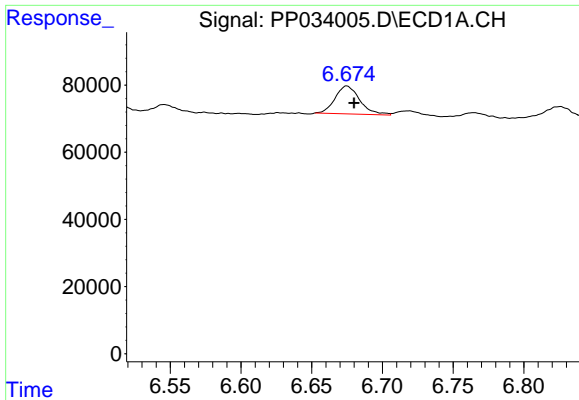
#22 AR-1248-2

R.T.: 6.460 min
 Delta R.T.: -0.005 min
 Response: 177922
 Conc: 83.58 ng/ml



#22 AR-1248-2

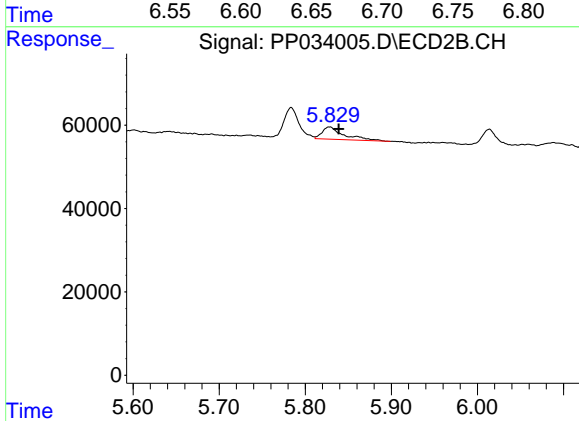
R.T.: 5.784 min
 Delta R.T.: -0.010 min
 Response: 86824
 Conc: 92.54 ng/ml



#23 AR-1248-3

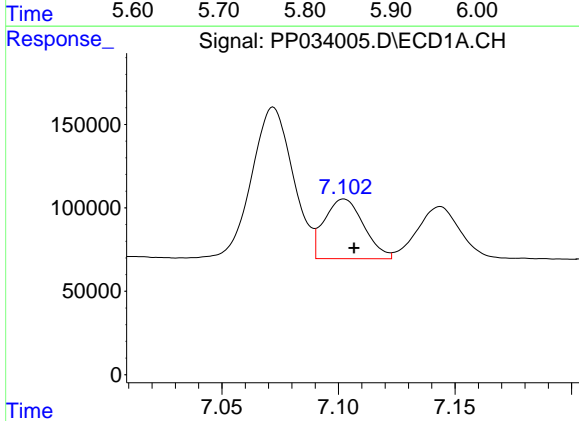
R.T.: 6.675 min
 Delta R.T.: -0.005 min
 Response: 101139
 Conc: 39.24 ng/ml

Instrument :
 ECD_P
 ClientSampleId :



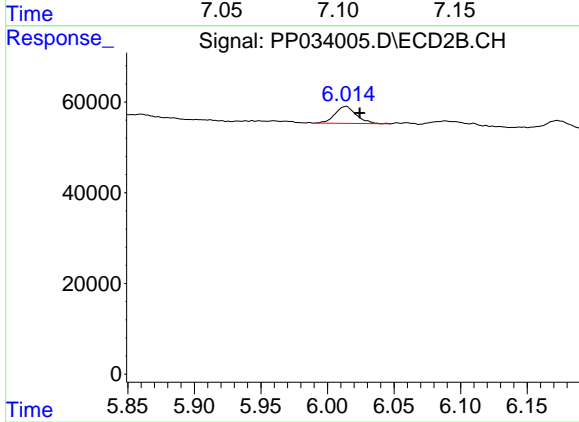
#23 AR-1248-3

R.T.: 5.828 min
 Delta R.T.: -0.010 min
 Response: 52422
 Conc: 52.06 ng/ml



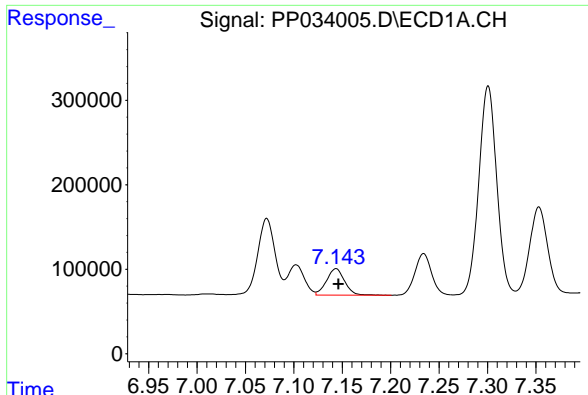
#24 AR-1248-4

R.T.: 7.102 min
 Delta R.T.: -0.004 min
 Response: 421844
 Conc: 152.48 ng/ml



#24 AR-1248-4

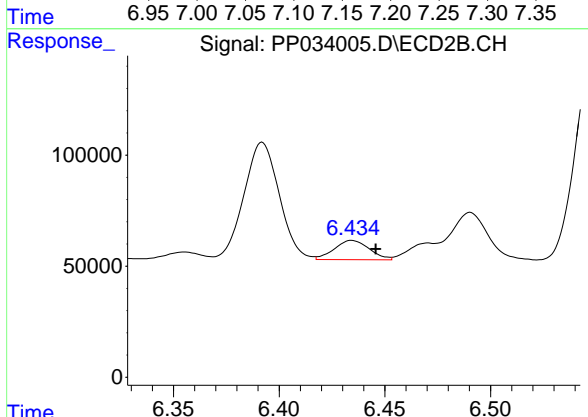
R.T.: 6.014 min
 Delta R.T.: -0.010 min
 Response: 41571
 Conc: 35.51 ng/ml



#25 AR-1248-5

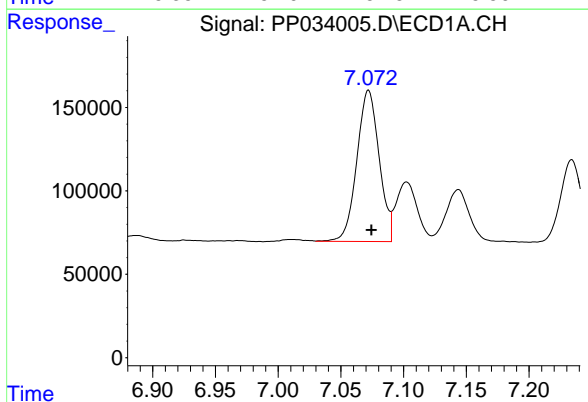
R.T.: 7.144 min
 Delta R.T.: -0.002 min
 Response: 409673
 Conc: 150.21 ng/ml

Instrument :
 ECD_P
 ClientSampleId :



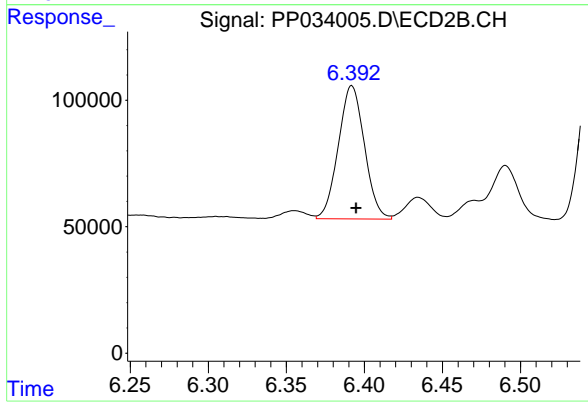
#25 AR-1248-5

R.T.: 6.434 min
 Delta R.T.: -0.011 min
 Response: 100006
 Conc: 92.85 ng/ml



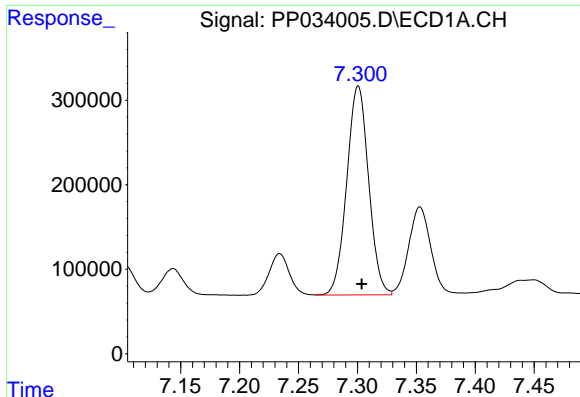
#26 AR-1254-1

R.T.: 7.072 min
 Delta R.T.: -0.002 min
 Response: 1120890
 Conc: 383.70 ng/ml



#26 AR-1254-1

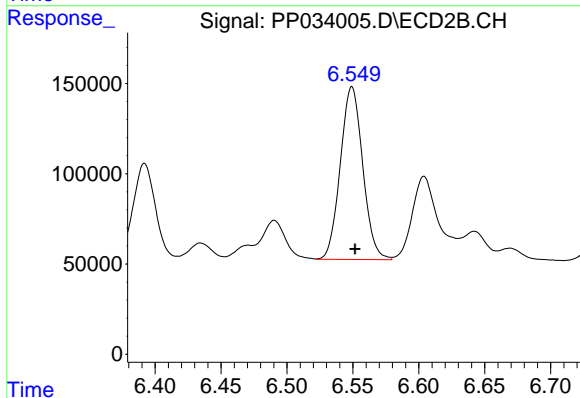
R.T.: 6.392 min
 Delta R.T.: -0.003 min
 Response: 612849
 Conc: 375.91 ng/ml



#27 AR-1254-2

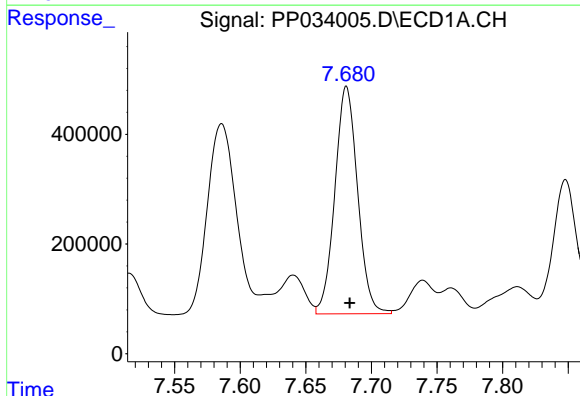
R.T.: 7.301 min
 Delta R.T.: -0.003 min
 Response: 3193631
 Conc: 702.34 ng/ml

Instrument :
 ECD_P
 ClientSampled :



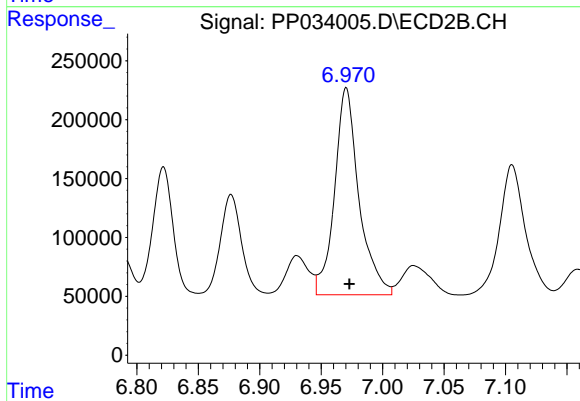
#27 AR-1254-2

R.T.: 6.549 min
 Delta R.T.: -0.002 min
 Response: 1134288
 Conc: 794.20 ng/ml



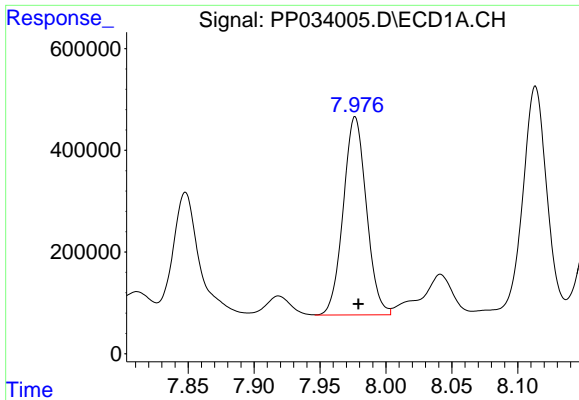
#28 AR-1254-3

R.T.: 7.681 min
 Delta R.T.: -0.003 min
 Response: 5005618
 Conc: 1012.41 ng/ml



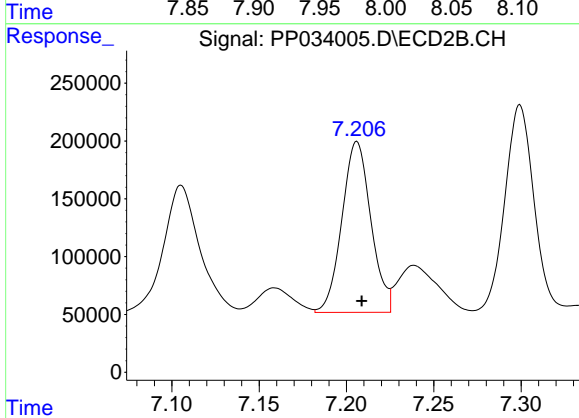
#28 AR-1254-3

R.T.: 6.970 min
 Delta R.T.: -0.003 min
 Response: 2431201
 Conc: 1062.21 ng/ml

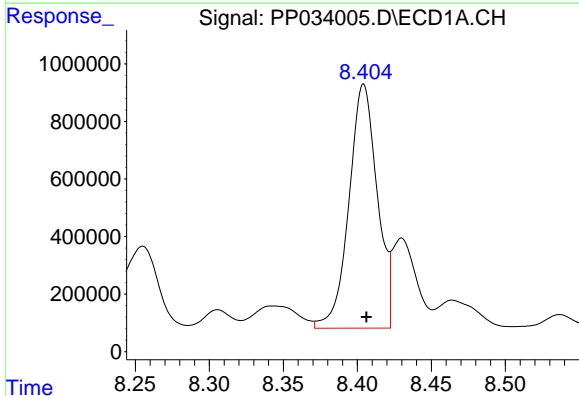


#29 AR-1254-4
 R.T.: 7.977 min
 Delta R.T.: -0.002 min
 Response: 4760399
 Conc: 1387.86 ng/ml

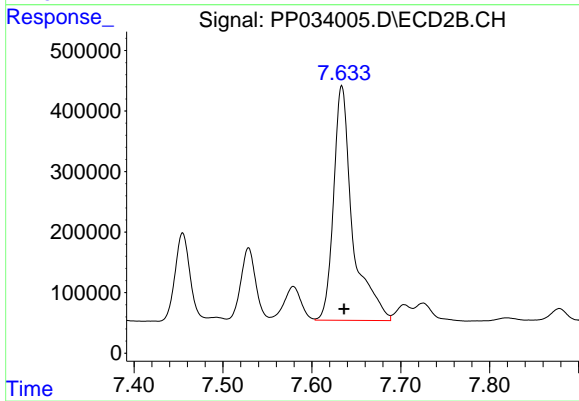
Instrument :
 ECD_P
 ClientSampleId :



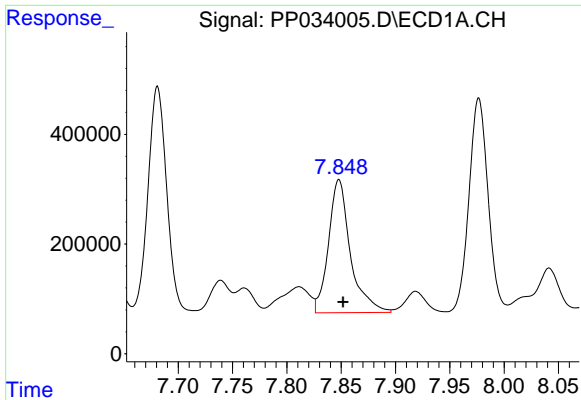
#29 AR-1254-4
 R.T.: 7.206 min
 Delta R.T.: -0.003 min
 Response: 1706448
 Conc: 1342.58 ng/ml



#30 AR-1254-5
 R.T.: 8.404 min
 Delta R.T.: -0.002 min
 Response: 11280324
 Conc: 2865.82 ng/ml



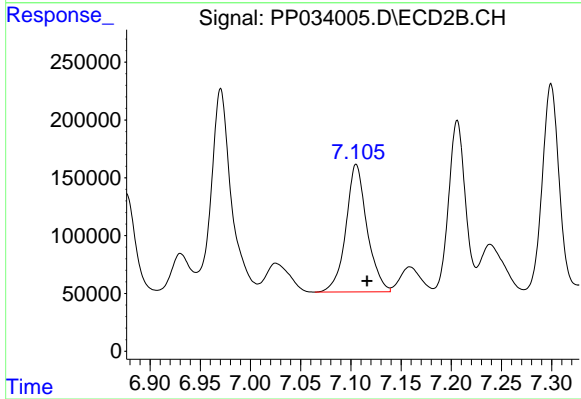
#30 AR-1254-5
 R.T.: 7.634 min
 Delta R.T.: -0.003 min
 Response: 5761060
 Conc: 3058.67 ng/ml



#31 AR-1260-1

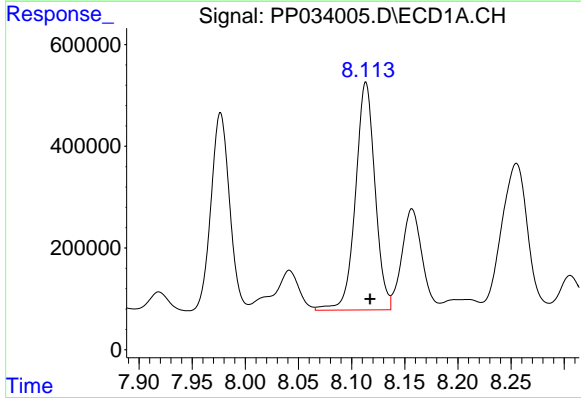
R.T.: 7.848 min
 Delta R.T.: -0.004 min
 Response: 3403935
 Conc: 991.22 ng/ml

Instrument :
 ECD_P
 ClientSampled :



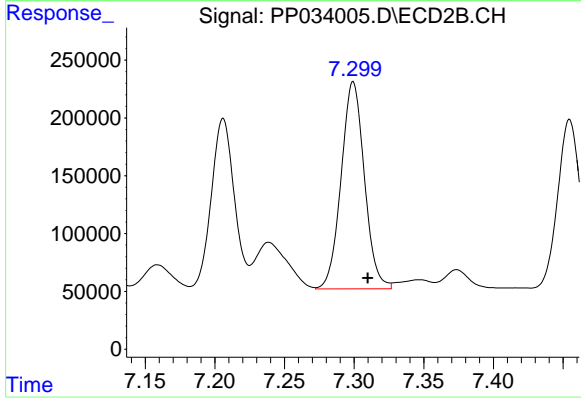
#31 AR-1260-1

R.T.: 7.105 min
 Delta R.T.: -0.011 min
 Response: 1616887
 Conc: 1057.98 ng/ml



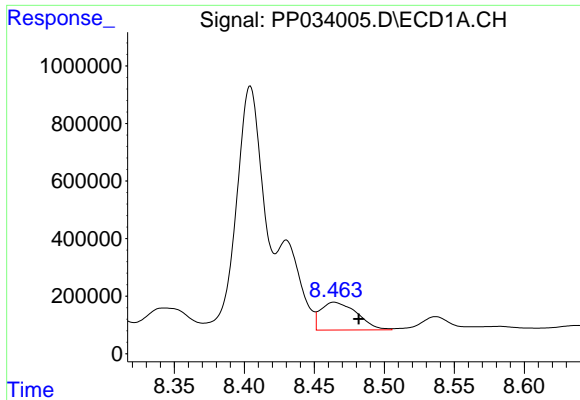
#32 AR-1260-2

R.T.: 8.113 min
 Delta R.T.: -0.004 min
 Response: 5726022
 Conc: 1390.74 ng/ml



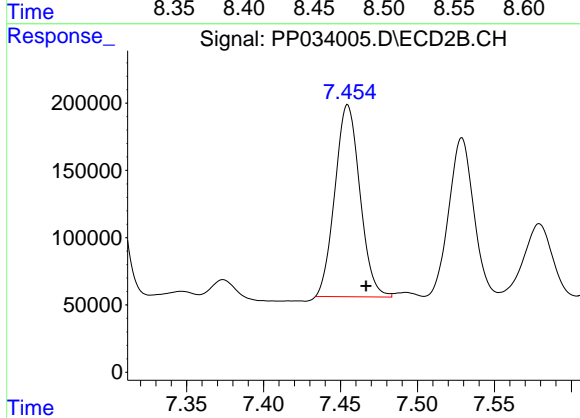
#32 AR-1260-2

R.T.: 7.299 min
 Delta R.T.: -0.010 min
 Response: 2082983
 Conc: 1151.61 ng/ml

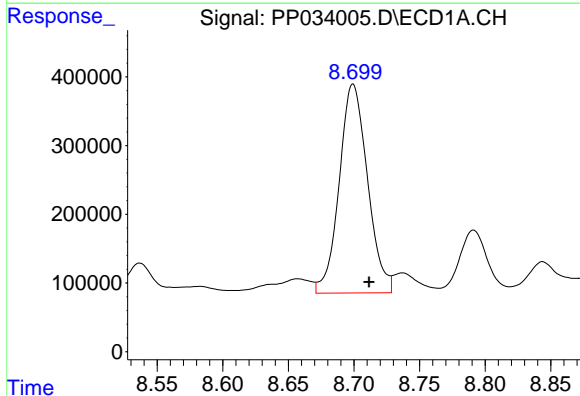


#33 AR-1260-3
 R.T.: 8.464 min
 Delta R.T.: -0.018 min
 Response: 1743523
 Conc: 538.66 ng/ml

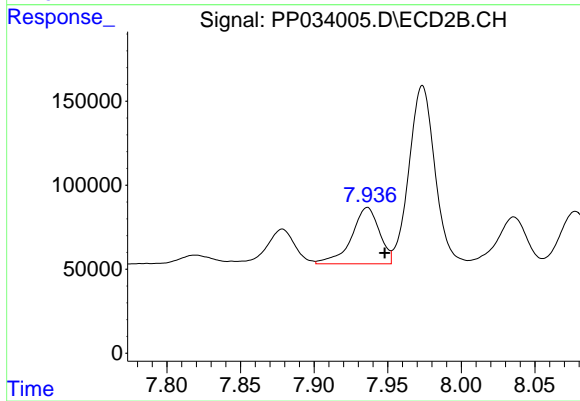
Instrument :
 ECD_P
 ClientSampleId :



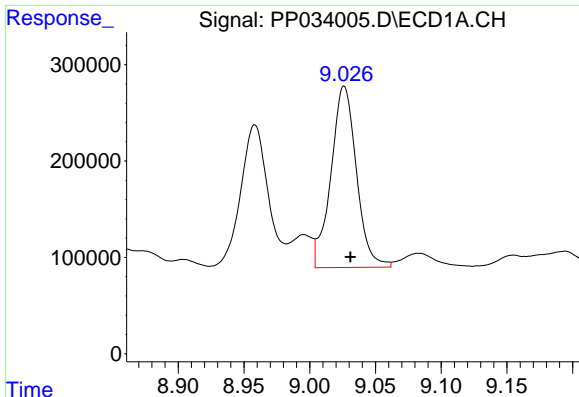
#33 AR-1260-3
 R.T.: 7.455 min
 Delta R.T.: -0.012 min
 Response: 1608781
 Conc: 949.93 ng/ml



#34 AR-1260-4
 R.T.: 8.699 min
 Delta R.T.: -0.012 min
 Response: 4570647
 Conc: 1233.92 ng/ml



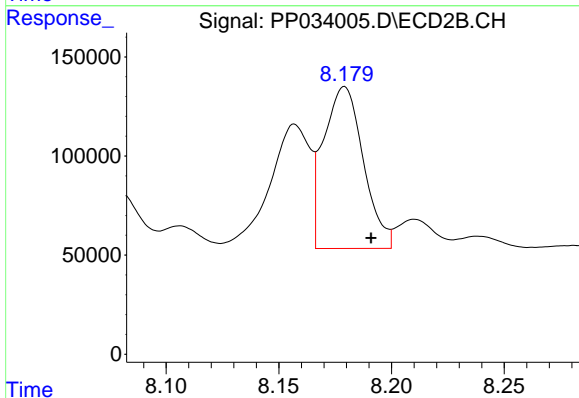
#34 AR-1260-4
 R.T.: 7.936 min
 Delta R.T.: -0.012 min
 Response: 443892
 Conc: 301.82 ng/ml



#35 AR-1260-5

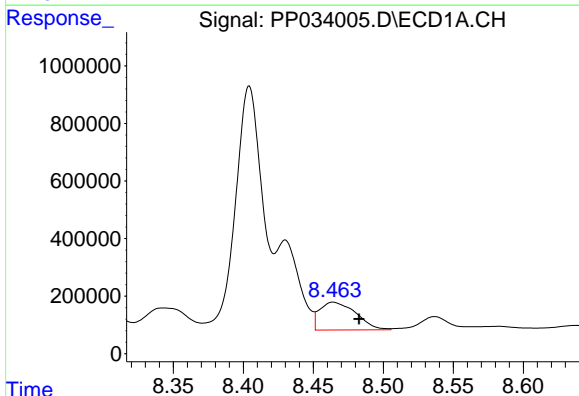
R.T.: 9.026 min
 Delta R.T.: -0.005 min
 Response: 2541331
 Conc: 328.50 ng/ml

Instrument :
 ECD_P
 ClientSampleId :



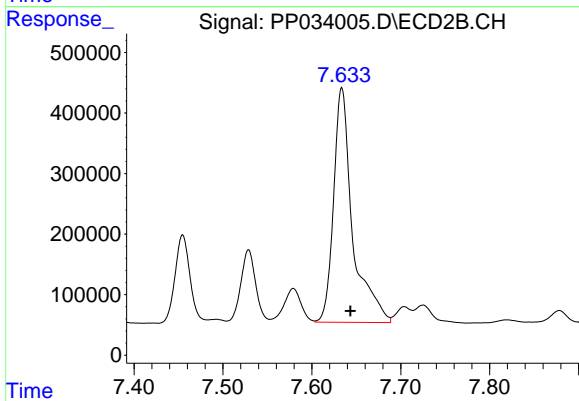
#35 AR-1260-5

R.T.: 8.179 min
 Delta R.T.: -0.012 min
 Response: 1002257
 Conc: 308.26 ng/ml



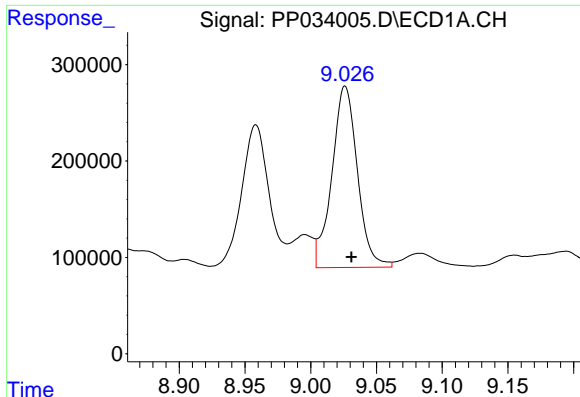
#36 AR-1262-1

R.T.: 8.464 min
 Delta R.T.: -0.018 min
 Response: 1743523
 Conc: 366.43 ng/ml



#36 AR-1262-1

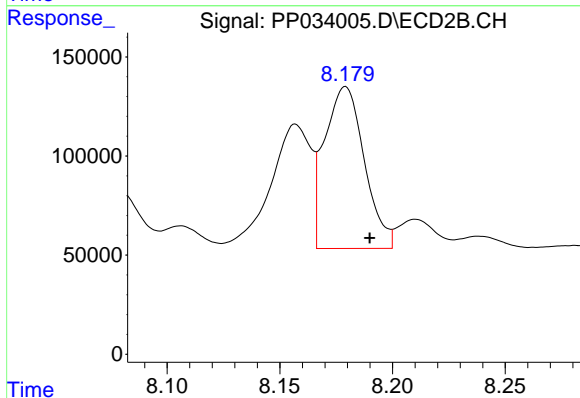
R.T.: 7.634 min
 Delta R.T.: -0.010 min
 Response: 5761060
 Conc: 5419.57 ng/ml



#37 AR-1262-2

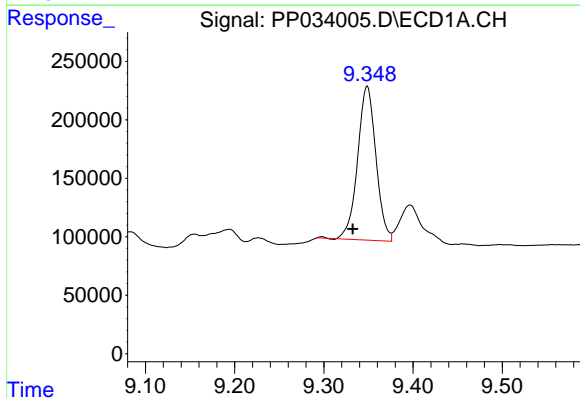
R.T.: 9.026 min
 Delta R.T.: -0.005 min
 Response: 2541331
 Conc: 294.02 ng/ml

Instrument :
 ECD_P
 ClientSampleId :



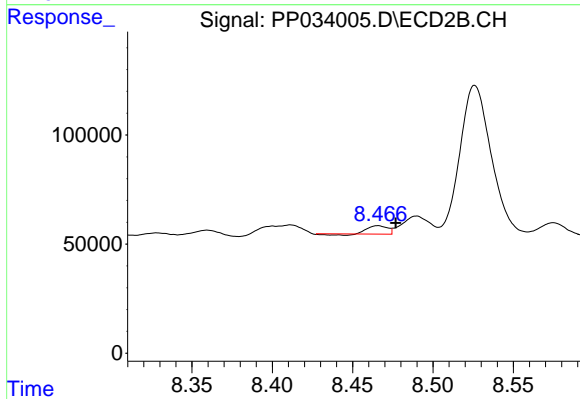
#37 AR-1262-2

R.T.: 8.179 min
 Delta R.T.: -0.011 min
 Response: 1002257
 Conc: 300.78 ng/ml



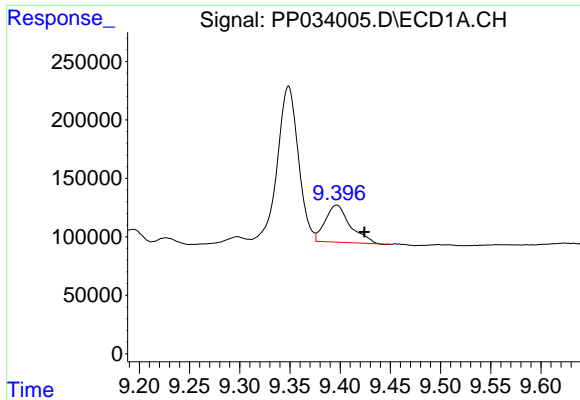
#38 AR-1262-3

R.T.: 9.349 min
 Delta R.T.: 0.016 min
 Response: 1880246
 Conc: 309.82 ng/ml



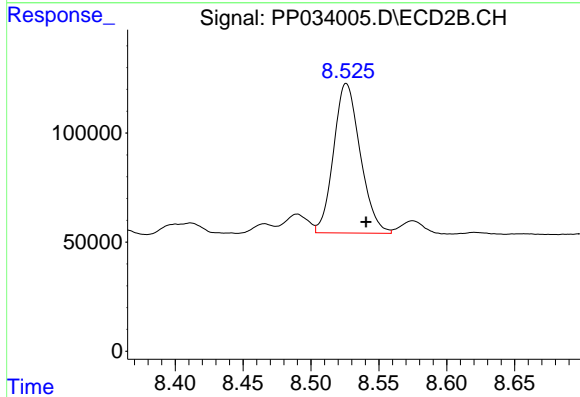
#38 AR-1262-3

R.T.: 8.466 min
 Delta R.T.: -0.011 min
 Response: 29814
 Conc: 20.88 ng/ml

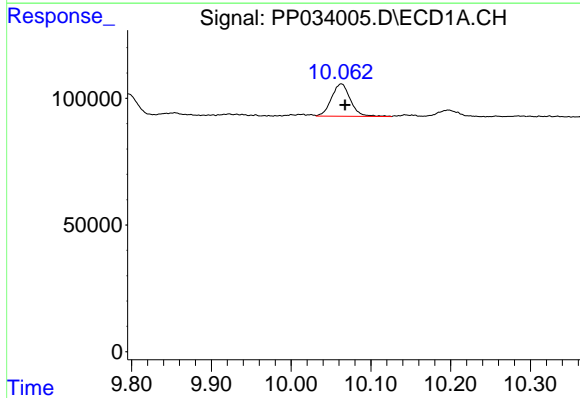


#39 AR-1262-4
 R.T.: 9.397 min
 Delta R.T.: -0.027 min
 Response: 548649
 Conc: 110.69 ng/ml

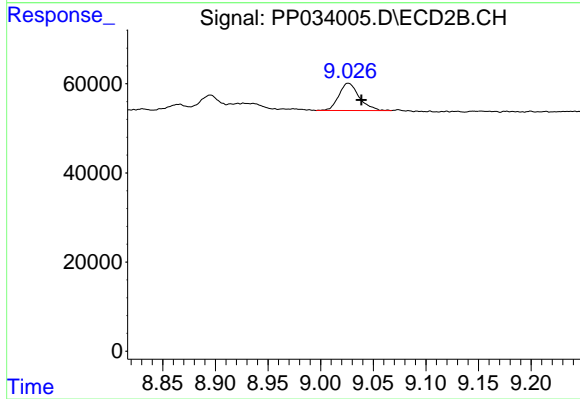
Instrument :
 ECD_P
 ClientSampled :



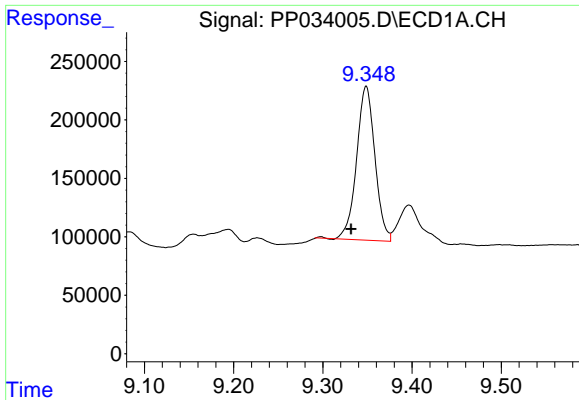
#39 AR-1262-4
 R.T.: 8.526 min
 Delta R.T.: -0.015 min
 Response: 936422
 Conc: 371.42 ng/ml



#40 AR-1262-5
 R.T.: 10.063 min
 Delta R.T.: -0.005 min
 Response: 210716
 Conc: 64.02 ng/ml



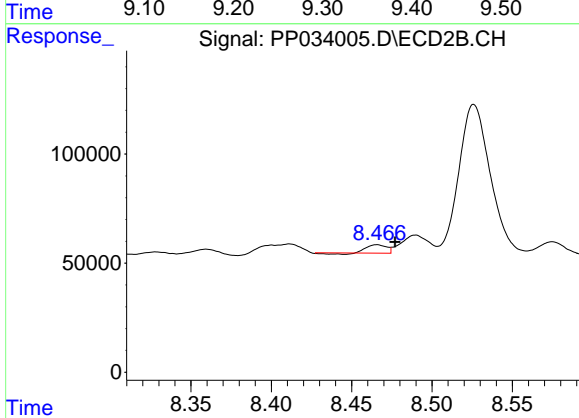
#40 AR-1262-5
 R.T.: 9.026 min
 Delta R.T.: -0.012 min
 Response: 82406
 Conc: 72.29 ng/ml



#41 AR-1268-1

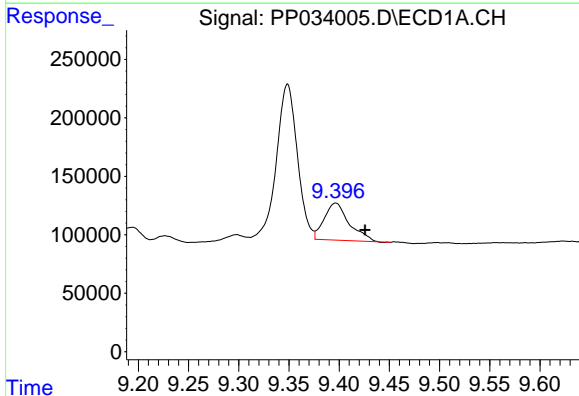
R.T.: 9.349 min
 Delta R.T.: 0.017 min
 Response: 1880246
 Conc: 180.58 ng/ml

Instrument :
 ECD_P
 ClientSampled :



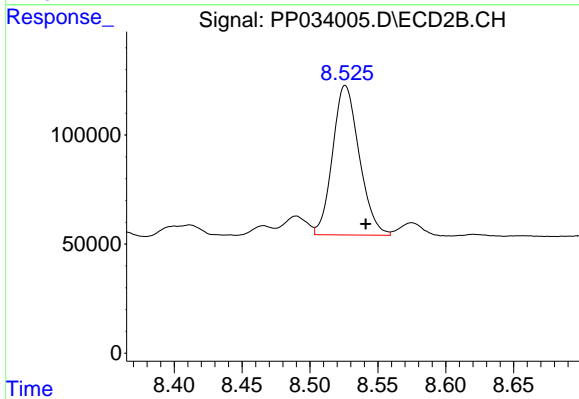
#41 AR-1268-1

R.T.: 8.466 min
 Delta R.T.: -0.011 min
 Response: 29814
 Conc: 7.79 ng/ml



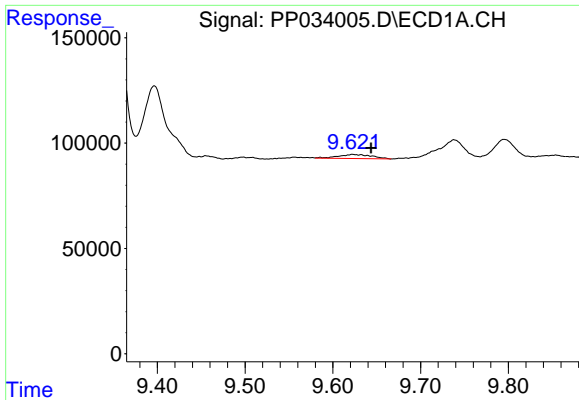
#42 AR-1268-2

R.T.: 9.397 min
 Delta R.T.: -0.029 min
 Response: 548649
 Conc: 54.29 ng/ml



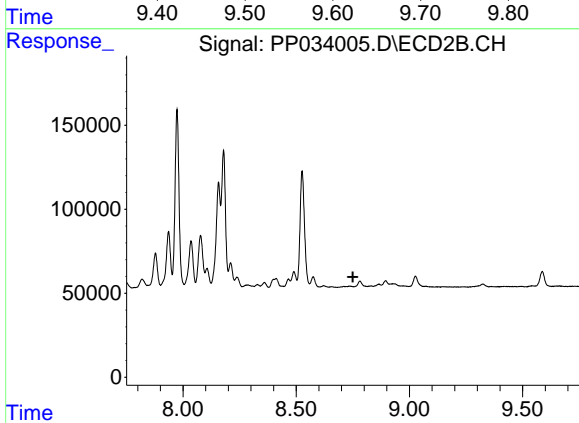
#42 AR-1268-2

R.T.: 8.526 min
 Delta R.T.: -0.015 min
 Response: 936422
 Conc: 262.09 ng/ml

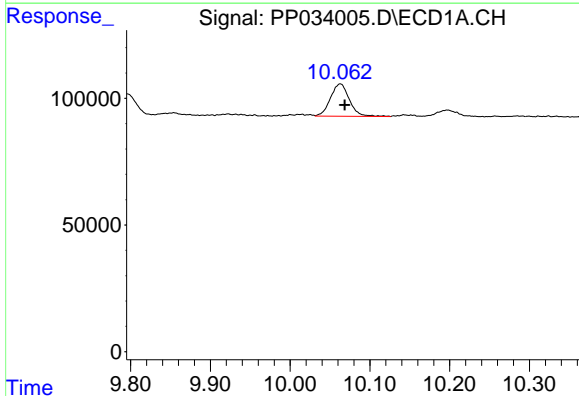


#43 AR-1268-3
 R.T.: 9.623 min
 Delta R.T.: -0.021 min
 Response: 51103
 Conc: 5.75 ng/ml

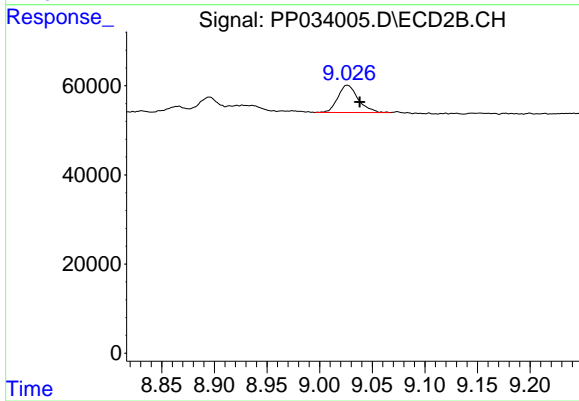
Instrument :
 ECD_P
 ClientSampled :



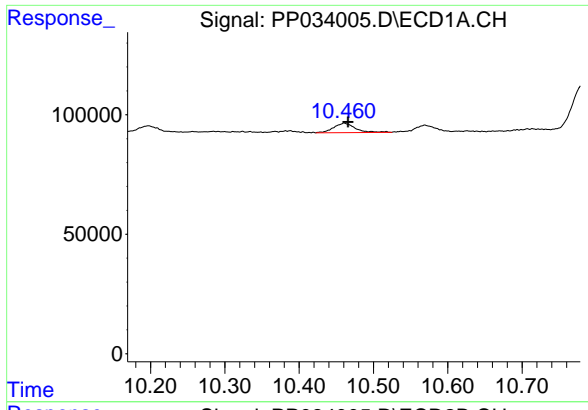
#43 AR-1268-3
 R.T.: 0.000 min
 Exp R.T. : 8.751 min
 Response: 0
 Conc: N.D.



#44 AR-1268-4
 R.T.: 10.063 min
 Delta R.T.: -0.005 min
 Response: 210716
 Conc: 60.51 ng/ml



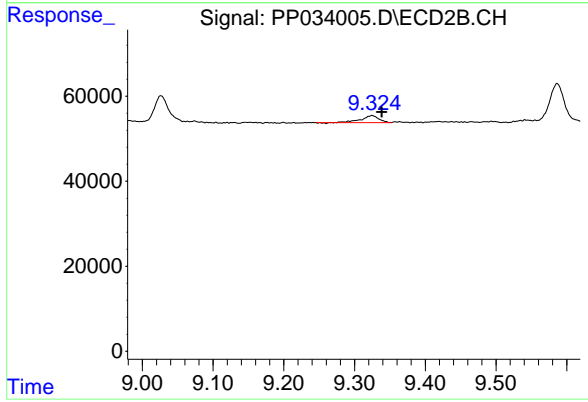
#44 AR-1268-4
 R.T.: 9.026 min
 Delta R.T.: -0.012 min
 Response: 82406
 Conc: 67.90 ng/ml



#45 AR-1268-5

R.T.: 10.461 min
Delta R.T.: -0.005 min
Response: 78971
Conc: 2.67 ng/ml

Instrument :
ECD_P
ClientSampleId :



#45 AR-1268-5

R.T.: 9.325 min
Delta R.T.: -0.014 min
Response: 28433
Conc: 3.11 ng/ml